

## Regional Courses

We have had some very successful one and two-day courses this autumn and there are a few places left on the spring courses which start in February.

These superb courses are excellent value for money, especially if you can acquire Golden Key Company. Recent feedback from delegates include: Great venue, excellent courses. "Brilliant! Solely the best reason for joining BIGGA. Enjoyed the two days fully. Look forward to the next course.

Unfortunately, due to an administrative error all the dates for the March 2003 courses were listed as March 4 & 5 in the December edition of this magazine. Apologies for any confusion. The dates of the March Courses are:

Further Computer Skills	Berkhamsted Golf Club	4 and 5 March
Project Management	Ross on Wye Golf Club	5 and 6 March
Coaching Skills	Potters Bar Golf Club	6 and 7 March
Management Skills for Head Greenkeepers	De Vere Carden Park	18 and 19 March
Basic Computer Skills	Southerndown Golf Club	18 and 19 March
Presenting a Professional Image	De Vere Carden Park	20 March
Budgets and Finance	De Vere Carden Park	16 and 17 April



You have a few more days to book your place on Continue to Learn, which runs from 20 to 23 January 2003. Places at the National Education Conference and on Workshops must be pre booked. However, you can book places on Seminars 'on the day', by calling at the BIGGA Education and Training Stand in Hall M. Remember, the National Education Conference and Workshop Programme is supported by the John Deere International Challenge.

## Careers Fair

Remember to visit the BIGGA Careers Fair, in Hall Q at the Harrogate International Centre on 21, 22 and 23 January 2003. Supported by the TORO Company, the Fair includes information on careers in Greenkeeping and Golf Course Management, Golf Club Management, Agronomy, Machinery Sales and support, the Chemical and Fertiliser Industry, the Land Based Industries and Playing Golf.



## The Allen Hover Mowers Powered by Honda Engines

Three models are in the range each benefiting from the easy starting smooth and quiet running of the Honda power packs, which can go anywhere a 2-stroke can.

The usual features of Allen hovers are retained, strong duty handlebar fixing to the deck, engine mounting frame giving less vibration and less damage to engine/deck in heavy duty conditions.

Tapered cone fixing of impeller to crankshaft means this item can be removed easily and without the use of pullers with resulting damage.

Ergonomically designed handlebars give more comfortable and hence less tiring grip, and are easier for side to side mowing.



440  
Hovertrim



446  
Hovertrim



450  
Hover  
Professional

Clean cut, quick  
change, safety blades

- Safer than a bar blade
- Clean cut - minimises bruising
- Safe for use with a rope
- Quick & easy to change



POWERED by  
Honda  
Engines



**allen**  
Powerful solutions for your growing needs

FOR A FREE BROCHURE AND DEALER LIST CALL

**0845 60 10 815**

Allen Power Equipment Limited, The Broadway, Didcot, Oxon, OX11 8ES  
Telephone: 01235 515400 Facsimile: 01235 515401 E-mail: sales@allenpower.com

Rachael and Gemma from the membership Department would like to wish every member a very happy New Year and welcome 44 new members to the Association.

How well do you know the people who work for the Association?

In this new series we give you a chance to learn a little more about a member of BIGGA's Headquarters staff

## A Warm Welcome Awaits

BTME and ClubHouse 2003 will be a first for both Gemma and I. We are both looking forward to meeting as many members as possible and hope to see you there. We will be on hand on the BIGGA Stand in Hall Q Stand Q69 to deal with all your membership queries.

Rachael and Gemma will be available on the BIGGA Stand to:

- Collect membership renewal forms
- Hand out replacement renewal forms
- Change Personal and Golf Club details
- Collect new membership application forms
- Hand out membership information
- Hand out field guides on production of your membership card
- Answer questions on your membership package
- Hand out details of the direct debit scheme and tax relief forms

Why not come along and find out more about the new SilverKnight benefits introduced this year and what else is new to your membership package.

As ever copies of the BIGGA produced education and training videos will be available for purchase as well as three of the most popular books borrowed from our library, Practical Greenkeeping by Jim Arthur, Golf Course Presentation by John Hacker and George Shiels and A Practical Guide to Ecological Management of the Golf Course by Bob Taylor.



Rachael Palmer



Gemma Lee



### Ken Richardson

**Position:**  
Education and Training Manager

**What does your role involve?**  
A wide range of tasks including: Arranging training courses for members and staff. Arranging Education Conference, Workshops and Seminars at BTME. Liaison with GTC. Controlling Education and Development Fund. Administering Student of the Year Competition. Administering Environment Competition. Administering Library. Introducing Field Guides. Producing and distributing Careers Information. Managing investors in People. Administering Master Greenkeeper Scheme. Selling and supporting OnCourse software. Running IT Training Courses

**How long have you worked for the Association?**  
8 1/2 years

**Where were you born and brought up?**  
Bradford, West Yorkshire

**Where did you work before you joined BIGGA?**  
Royal Air Force

**What are your hobbies?**  
Gardening, Walking, Reading

**What is your favourite food?**  
Steak

**What is your favourite film?**  
Joint: Great Escape/Battle of Britain

**What was the last book you read?**  
Apart from Jim Arthur's Practical Greenkeeping, Dad's Army

**Who is your all time hero?**  
Leo Lennon (My lecturer at college)

**What was the best event you've ever attended?**  
My wedding to Sandra

**What is your claim to fame? (None not acceptable)**  
Playing football at Valley Parade. Eating lunch with Princess Margaret. Introducing Sentry E3- D AWACS to service in 1991 (No, I've got no idea either - Editor)

## Keep your feet dry without wellies!



Have you ever wished you could banish your wellingtons and keep your feet not only dry but warm in more comfortable shoes or boots. Well Sealskinz have come up with the answer, WATERPROOF SOCKS. Yes they do really work. My husband, Stuart, is a keen cyclist and he absolutely swears by them. The socks are 100% waterproof and breathable and they can go in the washing machine on a 40 degree wash. They are absolutely ideal for any activity where you are out in the rain, be it at work, playing golf or indeed on your bicycle.



Sealskinz also produce waterproof gloves which are designed to offer excellent grip and dexterity in wet conditions and again they are machine washable.

BIGGA have teamed up with Sealskinz to offer members an exclusive deal on these unique products

**The socks usually retail at £20 per pair but we are offering them at £16.00 plus £1 p+p**  
**The gloves usually retail at £22.50 but we are offering these at £16.00 plus £1 p+p**  
**BUY ANY COMBINATION OF TWO FOR ONLY £29.50 plus £1.50 p+p**  
Available from BIGGA House and the BIGGA Stand at BTME and ClubHouse 2003. For more details please contact Rachael Foster on 01347 833800.

### JANUARY'S MEMBERSHIP DRAW WINNER

Just introduce one or more new greenkeeping members to BIGGA and your name will be placed into a draw to win a fantastic BIGGA Clock/calculator/calendar and alarm. Our congratulations go to January's winner, Steven Curtis, of Richmond Park Golf Club.

## Message of the Month Winner



Each month the person who has written the best message on the BIGGA Bulletin Board, which is found on the BIGGA website [www.bigga.org.uk](http://www.bigga.org.uk), receives one of these FM desktop scan radios.

Our congratulations go to January's winner Robert Holland, from Birchwood Park Golf Centre, whose message was posted on the 22nd November under the Education and Training for Greenkeepers section.

### BIGGA welcomes...

#### Scottish Region

Allan Bange, North

#### Northern Region

Benjamin Besau, Northern  
John Bond, North West  
David Gardiner, Northern  
Christopher Harding, North West  
Tim Randall, North West  
David Reed, North East  
Scott Robinson, North West

#### Midland Region

Paul Bowen, Midland  
John Crowe, BB&O  
James Nicholls, Midland

#### South East Region

Philip Collier, Surrey  
Nigel Downs, Essex  
Gregory Knight, Essex  
Peter Marney, Surrey  
Stuart Toop, London

#### S West/S Wales Region

Justin Austin, South West  
Richard Barter, Devon & Cornwall  
Jeffrey Diment, South Coast  
Kevin Noyce, Devon & Cornwall  
Dylan Rennick, South Coast  
Ben Scully, South West

#### International

Koen Verhelst, Netherlands  
Paul Kaufman, USA

#### Student Members

Eoghan Buckley, Rep of Ireland  
Craig Cameron, Central Scotland  
Neils Dokkuma, Netherlands  
Michael Ellis, Central Scotland  
Robert Tosh, Ayrshire

#### Associate Members

Timothy Cannon, East of England  
Wesley Emerson, N Ireland  
John Graham, N Ireland  
Tom Jones, South West

#### Corporate Members

Mark Booker, Rep of Ireland  
Gerry Coffey, Rep of Ireland  
Chris Faulkner, BB&O  
Dick Holgate, BB&O  
Jason Scott, BB&O  
Rod Townsend, South West

#### Golden Key Member

Gary Smith, West Scotland

# NEW MERCHANDISE RANGE

A new range of waterproofs and other merchandise is going to be available at BTME and ClubHouse this year. We are introducing a new mix and match waterproof range to suit your individual and Club needs. You also have the option of up to three lines of stitching on the garments which could include your Club logo and job title for example.



Samples of two new waterproof suits will be available at the show. The "Greenkeeper" suit is the more expensive of the two at £70 featuring a heavy duty Teflon coated microfibre outer shell and a high performance waterproof, breathable lining system. The trousers to the suit are available in differing inside leg measurements which ensure a more comfortable fit and boast extra long zips on the bottoms for 'easy on' over boots. The extra long length jacket has size adjusters. The suit has a two year waterproof guarantee and is available in two colours. The "Highlander" suit is available for £55 and boasts a Teflon coated microfibre shell and waterproof, breathable lining system. It has a 1 year waterproof guarantee and is available in four colours.

If you don't want to purchase a full suit then jacket and trousers can now be purchased separately. The two jackets available are called "International" priced at £48 and "Weatherbeater" priced at £42. Both jackets have a two year waterproof guarantee and whilst the "International" is a traditional front zip style the "Weatherbeater" is designed in a pullover style. They are both available in a multitude of colours. Trousers can be bought separately to complement the jackets in navy only. These are zipped trousers that hold a 2 year guarantee. They are available in 4 lengths and are priced at £40.

If full waterproofs are not what you're after then the 'Windblocker' sweater may be just what you're looking for. It's a Teflon coated wool acrylic sweater with a permlite waterproof lining. It's machine washable and showerproof and is available in three colours and is priced at £42. A cheaper option is the "Windbreaker" which is a shower proof lightweight V neck top that boasts anti wrinkle fabric. The "Windbreaker" is available in 8 colours and is priced at £25.

Further options include a "sleeveless breaker" which is a fully lined V neck garment, great to wear on and off the golf course and is priced at £22. A "half sleeve" breaker is also available at a price of £28.

Samples of these products will be available at BTME and ClubHouse on the BIGGA Stand in Hall Q. They will also be available to order from BIGGA House, phone Rachael Foster on 01347 833800 for details. £5 postage and packing will be charged on orders up to £100.



# A hole lot faster



...15 minutes floor to floor

SHARPER SOLUTIONS...with **BERNHARD**



A sharper cutting cylinder produces healthier, stronger and more attractive grass...

To find out how Express Dual and Anglemaster, the world's fastest mower grinders, dramatically improve your golf course, cut costs and save time...

call **01788 811600** today!



**BERNHARD AND COMPANY LTD**  
Rugby England CV22 7DT email: info@bernhard.co.uk

[www.bernhard.co.uk](http://www.bernhard.co.uk)

# Course Feature

## WHEN IAN MET SALLY

When Ian Needham and his dog, Sally, were issued with the challenge of building a golf course they could not have imagined just how well they would succeed. Scott MacCallum travelled to Beedles Lake to meeting the human half of the partnership.



Together we'll jump aboard a time machine and transport ourselves back 13 years to a land fill site in Leicestershire where we can listen into a conversation between JCB operator, Ian Needham, and his boss.

Boss: Ian, we've had plans drawn up and we want you to build a golf course on this site for us.

Ian (in shock): You're the boss, but I've never even been on a golf course before, never mind know anything about the game.

Boss: We're sure you can do it.

Ian: Well, perhaps the first thing I should do is go to college and learn a little bit about golf and golf course maintenance.

This should be interesting. Let's get back into the time machine and see how it all worked out.

It's now the present day and Ian is sitting in the extensive Beedles Lake Golf Club clubhouse. He's Course Manager of the successful pay and play course which hosts around 35,000 rounds a year and a membership of around 400. On the wall behind the 9 handicap golfer is the board listing the Club Captains which carries the name "Ian Needham 2000", while a few yards away in the Lady Captain Board which lists "Janet Needham 2000".

If you think this is all a little far fetched and more like a Kevin Costner screenplay than an article you normally find in your

monthly greenkeeping magazine hold on to your hats as it gets even more amazing.

To say that Ian built the course single handedly, on behalf of Leicester building company Jelson, wouldn't be strictly correct. No, he built it with the assistance of his Springer Spaniel, Sally, who was with him every step of the way. To complicate matters further the rootzone Ian used was ash, which was imported from another company in the Jelson group and was against all the advice being given at the time.

"A lot of people threw there hands up in horror and told us it wouldn't work. It wouldn't hold the nutrients and it would be very stale. It was pure black ash" recalled Ian.

Ian's boss, Robert Jelley, who must now feel like the man who discovered Wayne Rooney, could not have envisaged that his decision to turn his JCB operator into a Golf Course Constructor, then Grow-in Superintendent then Course Manager could have borne fruit in quite the way it has.

"I've always been a believer that if you are going to do



The Beedles Lake team with new canine recruit, Rizzler

something you do it wholeheartedly and properly and that's why, at the same time as I was building the golf course, I was on a three year Brooksby College course."

The plans for the golf course had been drawn up by David Tucker, the father-in-law of Robert Jelley, who had already designed the back nine at nearby Lingdale Golf Club before tackling an 18 at Beedles Lake.

"We started by building the 9th and 18th greens and we tried two different types of turf to see which was best suited to the ash. Sally and I dug out all the drainage - between 250 and 500 metres of it - and then put eight to ten inches of clean two inch ash on top of the draining layer, then two to three inches of five eighths down to fines to act as the intermediate layer then 12 to 18 inches on top of that."

He also shaped the greenside bunkering at the same time.

"It was a real work of art to shape them. It was fairly fine so the only way I could find to work it was to get on my hands and knees with a six foot piece of board and drag it into the shape I wanted and then we had a light whacker."

Remember all this was being done by someone who until a few months previously had no knowledge of golf whatsoever.

"I knew where the fairways were coming in from but I should imagine when I started there was a large element of luck as to how it turned out," said Ian, with disarming honesty.

Of the two turfs that were selected for the greens, one on either green, it was that supplied by Greenkeeper Turf, Sheford, Notts, which prevailed.

"It had been grown on polythene and so had no soil on it when it came to us and we found that it grew a lot quicker and was more easier to maintain so, having built the 9th and 18th in October and November of 1991, we went full steam ahead in '92," said Ian.

He found as he progressed that his skills developed to the extent that he even tackled a McKenzie, two tier green. This was also aided by regular visits to other golf clubs to see established golf courses and Hoover up information visually and from the Course Managers.

"From digging out a green, installing the land drain and putting in the binding layers and the rootzone would probably take me a week all told while, as I developed, I was putting in more shape to the greens," he explained.

In the main Sally and Ian tended to follow the route of the course doing the tees and greens in order unless adverse weather made that difficult.


The 16 additional greens were all built and turfed in 1992 while the fairways were seeded and then Ian saw his job change from Constructor to Grow-in Superintendent.

"By now I was hooked on the job. I'd built something from scratch and wanted to get to the next stage and produce something for golfers to play on."

At this stage he and Sally were joined by Tim Needham (no relation), who was to become Deputy Course Manager and between them they planted quite a lot of trees on the course and started to shape the fairways.

"Initially it was wide straight fairways cut by gang mowers but

**The professional information platform for the golf sector in Europe**



**27+28/21/2003** Munich


FAIRWAY is the most comprehensive information platform for the golf sector in continental Europe. It gives golf-course designers, operators, managers, initiators and greenkeepers outstanding contact opportunities and access to the latest know-how on ways to make the golfing facilities of the future more appealing, efficient and profitable than ever.

**9th Golf Course Congress with Exhibition**

[www.fairway.de](http://www.fairway.de)

**Venue:**  
M.O.C. München-Freimann  
Lilienthalallee 40  
80939 München, Germany  
Tel. (+49 89) 9 49 1 14 18  
Fax (+49 89) 9 49 1 14 19  
visitor@fairway.de

**Visitor information:**  
Pattern Ltd.  
Tel. (020) 8940 4625  
Fax (020) 8948 1442  
info@pattern.co.uk



Organizer: Messe München GmbH

M.O.C. München-Freimann

# Course Feature

as our knowledge has increased and we have got better quality machinery they have got a lot better."

The course opened on the first of July 1993, just under a year from when the last green was built and with Ian as head man, Tim as his deputy and a part timer in the summer, he had completed the transition from JCB operator to greenkeeper.

"I started to play golf around this time and became a little more knowledgeable about the game and began to look at creating doglegs and putting more shaping into the course."

"We do get quite a few problems from that, occasionally dips appear because of subsoil settlement and, being on a flood plain, it can be very difficult to drain.

And those ash based greens?

Nine years on they are as good as they were when I laid them. They drain beautifully and we stay on them all year round even through frost. I used to top dress with Probase but eventually I thought that somewhere along the line I had to get a little bit of soil into them as none of the organic material was staying in them and nothing was keeping the thatch done. So we started top dressing with a traditional 70-30 mix which has improved them. The ph having gone down from between 8.2 and 8.5 to 5.7 and 6.4.

"They want a lot of water in the summer and we have a Toro system on tees and greens but not much meadow grass has got into them which is surprising for greens which have been down for 10 years."

He admits to some Take-All Patch early on but is confident that it has now run its course while the growth of the trees planted in the early days has seen a little more fusarium creep in.

"We do get quite a bit of trouble in the winter months from crows damaging the greens as they hunt chaffer grubs and leatherjackets but not much other than that," explained Ian, who comes from a farming family.

Looking back on his construction work with the benefit of 10

years greenkeeping experience behind him Ian does feel that mistakes were made.

"If I had my time again I wouldn't have as many greenside bunkers. We put in too many and they were too close to the edge of the greens which has caused maintenance problems with sand on the greens but we have already started on improving this and have filled in some of the bunkers," said Ian, who has also worked on enlarging some of the tees.

The excellent clubhouse was built shortly after the course opened and four years ago it was joined by a driving range which is maintained by the greenkeeping team which now numbers four, and which this year has been augmented on a part-time basis by BIGGA National Chairman, Richard Barker, who has put in the odd shift between Association commitments.

"It has been an honour having Richard here and it's been quite useful to be able to pick his brains occasionally," said Ian.

The club name comes from the 38 acre lake, excavated by barges in the 1950s, which the clubhouse looks over and which boasts some fairly sizeable carp and pike.

"One of Tim's jobs is to look after the anglers and he is here on Saturdays and Sundays collecting money from them, so he works seven days a week."

If there was a defining moment of just how far Ian has come since the day he first drove his JCB out onto the landfill site 13 years ago it would be when he and his wife, Janet, who only started playing four years ago and who already boasts a fine handicap of 19, were elected Captain and Lady Captain respectively for the year 2000.

"We had a fabulous year. It was a real honour to be elected and we thoroughly enjoyed it," said the man whose first handicap was 15 and who touched 8 last year before rising to a steady 9.

He joined BIGGA in '95 and has since become a regular attendee

Ian's digger with Sally posing in front

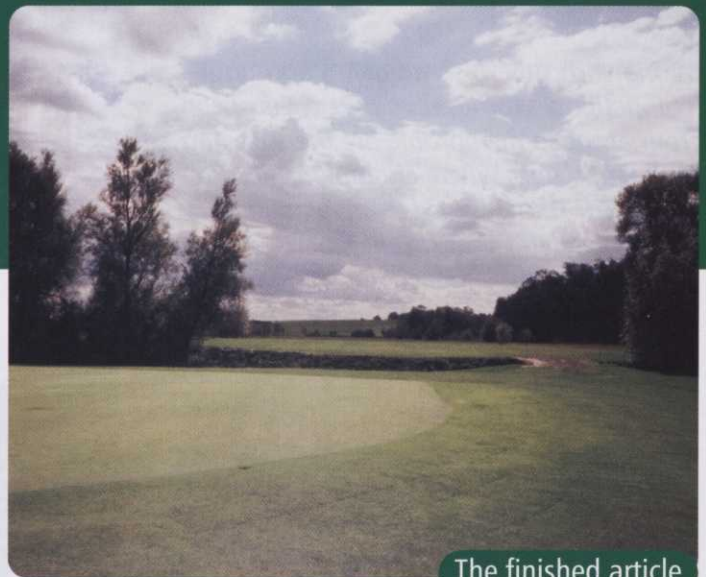


Laying a green





Ash was used as the rootzone



The finished article

of seminars and events at Section - he is Vice Chairman of the East Midland Section -, Region and Nationally where his thirst for knowledge takes him to Harrogate every year while the golf bug has seen him play in every National Championship since '95.

"It is indescribable what you get out of BIGGA. I wouldn't be where I am now without meeting the people I've met and helped me over the last few years."

Life has certainly changed for the unassuming 45 year-old, since he was issued with that job assignment 13 years ago.

"I certainly couldn't have envisaged my life turning out this way. There is something out there that I've built and can't be taken away from me. There is a huge element of pride and satisfaction and it

was quite an honour to have the trust of the Jolly family placed in me as they had invested a lot of money in this project."

He still has ambitions for the golf course with the possibility of a nine hole pitch and putt course whetting his appetite for construction work again.

But sadly, when he does climb back onto his JCB, he will do so without Sally who died last October and who is buried on the 18th fairway.

"Sally supervised me during the original construction. She was the boss," signed Ian.

 **BARENBRUG**

THE BEST FOR FINE TURF, BAR NONE!

## BAR 2

**50% Barcrown** – Slender Creeping Red Fescue

**30% Bargreen** – Chewings Fescue

**10% Bardot** – Browntop Bent

**10% Heriot** – Browntop Bent

This is the most successful mixture used today. Bar 2 includes Europe's No. 1 slender creeping red fescue, making it ideal for density, disease resistance, drought tolerance and close mowing. It's the perfect mix for golf greens, bowling greens or croquet lawns.

For the perfect seed mixtures whatever the sports turf, call **01359 272000** and get on the ball.

**FOR THE BEST MIX, GET ON THE BALL**

Barenbrug UK Ltd., 33 Perkins Road, Rougham Industrial Estate, Bury St. Edmunds, Suffolk IP30 9ND Tel:01359 272000 Fax:01359 272001 Email:info@baruk.co.uk [www.barenbrug.co.uk](http://www.barenbrug.co.uk)

Along with superb shotmaking and tight competition, what makes a PGA European Tour event so memorable are the stunning golf landscapes where championships are contested. The dedicated teams of managers, superintendents and greenkeepers who create these lush, challenging courses count on Toro – and so can you. The same equipment, irrigation systems and support Toro provides to its partners at PGA European Tour sites is available to golf courses everywhere. Whether large or small, new or old, every golf course with the desire to provide memorable golf experiences has a willing partner in this pursuit: Toro. Count on it.



**Peter Nyberg**

General Manager  
Kungsängen Golf Club, Sweden

*"The best part of Toro is they are so up to date with their new technology. If there's anything our greenkeepers are discussing or may need, they know that Toro is always in the front."*

*Toro equipment allows the staff to prepare a course to meet the demanding new standards of the tour. Nowadays you need to have such a wide range of equipment to maintain a course, and you know that Toro has the equipment you need."*



**Steve Taylor**

Course Superintendent  
Druids Glen Golf Club, Ireland

*"We find the machines give a quality cut. This, coupled with an excellent mechanic, means the machines perform at the highest standard."*

*The Toro units offer easy maintenance, and I don't just mean easier to work with, I mean they get less and less complicated, easier to work on, easier to set up and adjust."*



**Eddie Bullock**

Managing Director  
Woburn Golf and Country Club, England

*"Toro has listened and they've become a part of Woburn Golf and Country Club. They're team members."*

*... and when things are not going right, that Toro team member is right there, listening and working with you."*



**Theuns Van Niekerk**

Superintendent  
Houghton Golf Club, South Africa

*"The service that we get from Toro in South Africa is excellent. If we're in trouble, they'll lend us machines and help us out. They fix things at quite a fast speed. The support is very good."*

*There's not one machine in the whole range that I think is inferior to anything else available."*

**TORO**

**Official Supplier of T**  
**They count**  
**So can**



**David Garland**

Director of Tour Operations  
PGA European Tour (pictured above)

*"Not only did Toro have a full and diverse range of equipment that we required, and the majority of the Tour's top venues were already committed Toro users, but the endorsements and plaudits we received from the Course Superintendents, in our opinion the men who really count, were so numerous the decision was easy."*





## Golf Special

The new British Seed Houses Grade A Amenity and Wild Flora Seed Mixtures catalogue is out now.

Pick up your copy from stand A10 at BTME



## Inside...

- WIN a Berghaus Jacket or FREE Golf at Celtic Manor
- Putting Surface Dilemma?
- The Green, Green Grass of Wales
- Providence Plugs
- Golf Boost for the A Team
- FREE Training & Golf Day



- Greenkeepers joining the Grade A Club receive discount off the cost of approved training courses. Call 01522 868714 for details.



JANUARY 2003

# Roots



A SEEDS • SERVICE • SOLUTIONS PUBLICATION



**SO-GREEN** – the unique new ‘stay green’ grass developed by the British Seed Houses turfgrass breeding programme at the Institute of Grassland & Environmental Research (IGER) and launched as seed in 2002 – is also now available as turf, offering a faster route to a year-round greener course.

According to British Seed Houses Amenity seeds manager Jon Chippendale, golf courses now have access to the perfect ryegrass-based tee and fairway seed mixture.

“IGER trials this summer comparing Grade A26 **SO-GREEN** with normal turf have clearly demonstrated that if greenkeepers use **SO-GREEN** – based on the new ‘stay green’ ryegrass AberNile – they can expect reduced turf yellowing and improved summer and winter greenness. And that’s in addition to other key technical benefits such as wearability and high shoot density sought from a normal ryegrass-based turf. What’s more AberNile is also very resistant to crown rust,” he says.

“We are already fielding enquiries from some of the most prestigious tournament golf courses in the country and maybe one day, sun-bleached Open Championship links courses will be a thing of the past.”

Trials at the Sports Turf Research Institute (STRI) have also confirmed that incorporating ‘stay green’ perennial ryegrass within a seed

mixture can increase both the visual and objectively measured greenness of turf.

According to Andy Newell from STRI, the ‘stay green’ phenomenon is certainly a significant turfgrass development: “Our trials have shown that ‘stay green’ grasses differ from traditional grasses in respect of increased greenness and reduced yellowness. There’s no doubt that they can increase the perceived visual quality of grass mixtures,” he says.

It is these trial findings that have resulted in the launch of both **SO-GREEN** seed and turf – exciting new proven turfgrass products that will deliver ‘stay green’ grass to improve the year-round visual appeal of golf courses.

Golf greenkeepers and landscapers can now purchase stocks of the new turf product from key turf producers, with plenty more available from spring 2003.

## See us at BTME 2003

For further details on Grade A26 **SO-GREEN** seed and turf, see us at BTME 2003 (stand A10) or call 01522 868714. Alternatively, you can visit our website at [www.britishseedhouses.co.uk](http://www.britishseedhouses.co.uk)

# Grass Cuttings



Jon Chippendale BSc Hort dist.

As newer, finer, higher shoot density ryegrasses start to find their way onto some UK golf greens because of their exceptional wear tolerance, British Seed Houses amenity seeds manager Jon Chippendale reviews the full range of putting surface grasses now available to the UK greenkeeper.

The putting green is where golf matches are won and lost. And around 40% of all golf shots take place on this vital surface – so it's no surprise that the greens are the most intensively managed areas on a course. The membership wants them perfect!

Greens must be consistently fine and true for putting, yet receptive enough to reward a good approach shot. Oh, and there's the no small matter of being able to sustain the tens of thousands of rounds that take place on UK courses trying to cater for the golfer wanting both summer and winter play.

The grasses that make up golf greens influence significantly the playing quality and wearability of the putting surface. Traditionally, the quest for perfection has been tackled with fescue and browntop bent grass mixtures. Fescues produce hard and fast greens that bounce an approach shot forward, but wear tolerance declines in the winter. Year-round harder-wearing bent grasses produce fast and true putting surfaces that are also receptive to approach shots.

## BEST SHOOT DENSITY

Fescues and the browntop bent species are cost-effective and widely available, but the tenuis bent grasses (eg. Duchess) have the best shoot density and colour.

In the USA, there's no doubt that the widespread use of creeping bentgrass (*Agrostis stolonifera*) varieties on USGA specification greens and others with a high sand content does produce fantastic putting surfaces. But the maintenance requirement is high. Increased cultivation and top dressing are required to counter thatch production, but where budgets allow well-maintained creeping bentgrass greens are hard to beat.

Unfortunately, the latest bentgrass from the States will not necessarily work in the UK. Many bentgrasses developed abroad have not passed UK DUS standards and the UK climate is totally different. So beware the latest fads from overseas.

Velvet bentgrass (*Agrostis canina*) is a much-maligned species because of the poor performance



of old varieties. One variety, Kingstown, gained a bad reputation because it went dormant during the UK winter. But modern varieties such as Avalon are much better and easily surpass the performance of even creeping bents, particularly for UK soil-based greens.

Avalon possesses tremendous shoot density and wear tolerance, and maintains a dark green colour even under low fertiliser and irrigation regimes. Properly managed, the result is a stunning putting surface.

The new idea for UK golf greens – fuelled by the sheer number of rounds being played on our courses in all weathers – is the introduction of perennial ryegrass to the sward to boost wear tolerance.

This would not be possible without the development of newer, higher shoot density ryegrasses such as the IGER-bred AberImp that will tolerate close mowing – traditional ryegrass turf simply is not dense or fine enough.

Time will tell whether this new type perennial ryegrass will take a significant share of the golf greens market in the UK, but we are certainly monitoring closely mown AberImp trial plots. If any ryegrass can, AberImp can and the trial results will certainly help us advise our greenkeeper customers on whether amenity perennial ryegrass really can deliver an effective compromise between wearability and the perfect putting surface.

# The Gr

The Welsh Open at Celtic Manor



BRITISH SEED H



Come the Ryder Cup the Wentwood Hills Celtic Manor in Wales ready. And the use of SO

is part of the preparation

Jim McKenzie – Director of Golf Operations and Management at the New resort – will oversee the fairways on the Wentwood course with SO-GREEN spring. And if all goes biggest team prize in golf contested on grass that st all year round.

"When we built the Wentwood Hills course in 1997 we were from British Seed Houses have continued to use Providence creeping bent

## Golf B

Gary Fitch, John Sturges and Ian Whibberley have joined British Seed Houses as technical advisers. All three will be responsible for providing technical support, as well as the full Grade A amenity turfgrass and seed mixtures.

Myerscough College science graduate Gary Fitch will cover the North of England and North Wales. With a ba

## BTME 2003 GREEN SEED OFFER

Bring your voucher to our stand (A10) at BTME and claim your discount!  
Order your Avalon and Providence at the show and get 15% off – equivalent to £3 off for every kg you buy. Minimum order two bags. Grade A Club members also gain extra TCS points.

# Green, Green Mass of Wales



in 2010, greens and the IGER-bred ryegrass varieties on the tees and fairways. And naturally, as hosts of the

ector of Courses port golf tees and od Hills in the well, the f will be ys green

entwood sed seed ses, and se their t on the

Wales Open in August every year it's great to be able to use top performing sportsgrass varieties that are bred in Wales," he says.

"I've been to IGER and seen the development of SO-GREEN at first hand. Apart from the new 'stay green' benefit, it also offers everything else we want from a ryegrass-based seed mixture for the tees and fairways. With such a prestigious event like the Ryder Cup in 2010 to be prepared for, anything that enhances the visual presentation of the course has got to be worth doing," Jim enthuses.

Preparation for the Ryder Cup also includes building eight new holes; a development that will help boost spectator capacity from the current 35,000 to 50,000, Jim says.

## Providence Plugs

CELTIC MANOR keeps its greens in top condition using Providence creeping bent plugs. Whenever annual meadow grass encroaches, the contaminated turf is replaced with two-inch circumference plugs of Providence taken from the resort's own turf nursery.

"The system is far better than trying to weed out meadow grass by hand," points out Jim McKenzie. "With hand weeding it's difficult to

get all the root out and then you have the hassle and time delay of sanding and re-seeding small areas. Plugs are a great idea because it only takes two or three seconds per plug for an instant result!"

As a further precaution against meadow grass encroachment, Jim also re-turfs a 22-inch collar around each green every year using Providence turf supplied by In Turf.

## Boost for the A Team

ttard and e recently ouses as hree will lf course ll as sales range of wild flora

turfgrass Fitch will land and ckground

in professional golf, Gary brings valuable golf sector experience to the team as well as strong, all round turfgrass technical expertise.

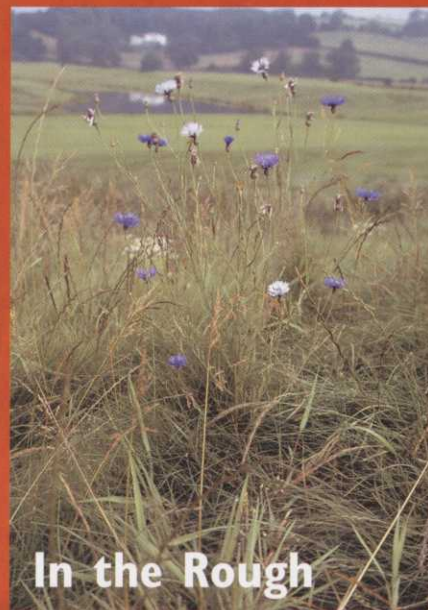
John Stuttard looks after Scotland, Cumbria and the North of England. A qualified greenkeeper, John joins the team after posts at golf courses in the UK and, most recently, in Norway.

Ian Whibberley is the new technical sales adviser for the

South East of England. Joining the Grade A team after 3½ years with Derbyshire County Council, Ian brings a landscape contracting background to his new role. He is a former county cricket head groundsman and has a good all round knowledge of the amenity and private sector within landscape construction and maintenance.

See the back page for their contact details.

## In Brief...



### In the Rough

British Seed Houses recently extended its range of Grade A golf mixtures with a fescue-based product for creating rough that will enhance any course. Grade A 12R helps cultivate the right conditions for wildlife as well as deliver a challenging layout.

The introduction of Grade A 12R means greenkeepers now have a proprietary wildlife-friendly mixture for roughs. What's more, the combination of fescues within the product means management is simple whatever the maintenance programme. Call 01522 868714 for more details.

## New Turfgrass List

The new 2003 buyers guide to quality amenity turfgrasses is due out shortly. The new booklet is produced by The British Society of Plant Breeders in conjunction with the STRI. Pick up your copy from our stand (A10) at BTME.

## New Wild Flora Manual

British Seed Houses is revising its wild flora manual and copies will be available soon. The guide shows you how to develop a low maintenance, wildlife-rich golf course natural environment and highlights the importance of using only UK native wild flowers. Call 01522 868714 to reserve your copy.

## Order On-Line

Don't forget that you can find more information on the full range of Grade A golf course and wild flora mixtures at [www.britishseedhouses.co.uk](http://www.britishseedhouses.co.uk)

# Come to the FREE Grade A Club Training and Golf Day

Here's news of a great way to combine business with pleasure next spring.

Call in at our stand (A10) at BTME 2003 and not only will you be able to take up our great discount offer on Avalon and Providence, you can also register for the Grade A Club training and golf day in late March.

FREE for Club members (£25 for non members), the first Grade A Club Educational Golf Day will be held at Trentham Golf Club, Trentham, near Stoke-on-Trent on March 25th. And what a great training day out we've got planned.

Join us in the morning for a golf

course seeding educational seminar – independent speakers include Trentham course manager and committed Avalon velvet bent user Phil Gates and Ken Richardson from BIGGA. After the seminar enjoy a buffet lunch before taking the option of working out any winter rustiness from your golf swing. We will have courtesy of the course during the afternoon for a Stableford competition, following a shotgun start at 1.00pm. Why not see first hand just how well Avalon velvet bent greens perform!

See us on stand A10 at BTME for more details.



Join the Grade A Club at BTME 2003 and go one up! Grade A Club members gain discount off the cost of training and educational materials based on the volume of Grade A seed mixtures purchased from British Seed Houses. Purchases of Avalon and Providence also qualify for training credit points. Partners in the training scheme include BIGGA, STRI, IOG, LANTRA, TGA and BAGMA.



## Caption Competition

Send us an amusing caption for our photograph and you could win a Berghaus Activity Jacket worth £60, or a FREE round of golf on the fabulous Wentwood Hills course at Celtic Manor – venue for the 2010 Ryder Cup. Entries must be received by 31st January 2003 and the senders of the three best captions as judged by the Roots editorial team will each win a jacket – or the golf, depending on preference.

- If I win, I would prefer a jacket as my prize  
 If I win, I would prefer the golf as my prize

Your Caption No more than 25 words

\_\_\_\_\_  
 \_\_\_\_\_  
 \_\_\_\_\_  
 \_\_\_\_\_

Name \_\_\_\_\_

Business Address \_\_\_\_\_

\_\_\_\_\_  
 \_\_\_\_\_  
 \_\_\_\_\_

Tel. No. \_\_\_\_\_

Please send me more information on Grade A26 SO-GREEN turf and the Grade A range of amenity seed and wild flora mixtures.

I would like to register for the Grade A Club.

I would like more information on the Trentham training and golf day.

Please do not send me any information.

Mark your entry 'ROOTS Competition' and send it to:  
 British Seed Houses, Camp Road, Witham St. Hughs, Lincoln LN6 9QJ



## Up close and personal...

A seed mixture is as good as its blend of proven grass varieties. But we believe in the right blend of expertise and service too.

British Seed Houses is the only amenity grass seed company with regional technical advisers dedicated to supplying specialised seed mixture solutions direct to the end user. Each adviser can draw on a mixture of seed industry and client-side turfgrass management experience.

When choosing a seed company to work with make sure you pick the right mixture.

Call the Lincoln office, or your local British Seed Houses adviser today.



**Simon Taylor**  
 Director and Unit Manager

Tel: 01522 868714  
 Mobile: 0788 7578801



**Jon Chippendale**  
 Amenity Seeds Manager

Tel: 01522 868714  
 Mobile: 0788 7578805



**Gary Fitch**  
 North West England and North Wales

Home: 01524 35443 or  
 Mobile: 0788 7578807



**Ian Whibberley**  
 South East England

Home: 01246 431136 or  
 Mobile: 0788 7578804



**John Stuttard**  
 Scotland, Cumbria and North East England

Mobile: 0788 7578802



LINCOLN  
 Tel: 01522 868714 • Fax: 01522 868382

BRISTOL  
 Tel: 0117 982 3691 • Fax: 0117 982 2198  
 email: seeds@bshlincoln.co.uk  
 www.britishseedhouses.co.uk

The PGA European Tour ...  
Count on us ...  
Count on you.



**Jaime Ortiz Patino**  
President  
Club de Golf Valderrama, Spain

*"Having received recommendations from specialists in the field of golf maintenance of the quality of Toro equipment, I was fortunate since the day I purchased Valderrama in 1985 to go exclusively with Toro.*

*I do not regret this choice, since the use of Toro equipment has always given me optimum results and their technology is always at the forefront. The durability of Toro equipment makes it more economical in the long run."*



**Klaus Peter Sauer**  
Course Manager  
Golf Club St. Leon-Rot, Germany

*"The machines are always good, especially the Greensmaster Flex 21. There's no other possibility on the market at the moment to cut sloped greens down as low. You can get better speeds on the greens, which makes the course much tougher.*

*When they deliver the machinery, they always have the time to demonstrate the equipment to my staff.*

*When they come out from the factory, you see there was a lot of thought put into the machine."*



**Bill Warwick**  
Superintendent  
Saint-Nom-La-Bretèche Golf Club, France

*"Going into the tournament, I don't worry about equipment. I'm worried more about the golf course and the weather. I don't even have to think about the equipment. I know it's going to be reliable. It's one less thing I have to think about. I know it's going to start and work well.*

*All machines break eventually, every superintendent knows that. But the support you get when your machine's down, when you need it most, that's what is great about Toro. That's why we are Toro. That's why we don't have any other colour here."*



[www.toro.com](http://www.toro.com)



**Chris Kennedy**  
Director and Golf Courses Manager  
The Wentworth Club, England (pictured above)

*"We prepare for three televised golf tournaments annually and since coming to Wentworth 13 years ago I've done 32 televised golf tournaments using Toro equipment and irrigation. It is simply the best equipment for the preparation of golf tournaments.*

*Toro is still the only company that has the aeration equipment you can use the day before the tournament. Certainly for tournament presentation, the Toro range of product is second to none."*



**Count on it.**

# Constructive Advice

**Roland Taylor dispenses some fine advice if you are thinking of undertaking any construction work**

However natural a golf course appears it is still man made and is constantly subjected to both geological changes and the vagaries of the prevailing weather of the area in which it is located.



For some readers it is a continual battle against erosion and the forces of nature. Just one example of what can happen is a well known links course where the first tee had been lost to the sea on numerous occasions plus high tides regularly caused flooding. This type of problem is not common place but it does illustrate that when the course was first established (many moons ago) these types of possible problems were not taken into account. Closer to the present is the fact that throughout the 70s and 80s the big hype was that golf was about to take-off. Courses began appearing across the country like mushrooms as many thousands of acres of land, which had once grown cereals or provided fodder for cattle disappeared, to be replaced by fairways, tees and greens. This generated considerable business for the construction industry, but unfortunately like all situations where there is the slightest hint of money to be made it also attracted the cowboys. As a result some courses were not built to the high standards that they should have been. Eventually, sanity prevailed and

organisations sprang up designed to protect the clients/customers from the fly-by-nights. One such body was the British Association of Golf Course Constructors, which was formed at the end of the seventies. Its inception was as a result of increasing concern that people and companies were not maintaining standards regarding various disciplines within the golf course industry. The aim was, and still is to bring together like-minded people from companies who have high standards in all the disciplines relating to the building of courses. It is not one of those organisations where paying your dues automatically makes you a member. From the onset anyone joining had to be invited plus be able to satisfy their peers that their company could meet all the laid down standards. These include experience, professionalism and quality workmanship.

Twenty plus years on the present members of BAGCC are recognised as a formable source of specialist expertise when it comes to all aspects of golf course construction and its related activities. In addition, to the membership there are the