



South West and South Wales
Paula Humphries
Tel: 01288 352194

Devon & Cornwall

Dartmouth Golf & Country Club was the venue for the Rhone Poulenc & Supaturf March meeting held on Wednesday March 24. Unfortunately, on arrival, the rain started to fall which made playing conditions over Dartmouth's excellently prepared course, very difficult. Our non-golfing members departed the clubhouse on the now customary tour of the course, but with the weather closing in, they headed for the greenkeeping compound before returning to the warm dry clubhouse. After a superb lunch Paul Clifton, Rhone Poulenc, and John Mullins, Supaturf, representing our sponsors for the day, both gave a short presentation on their respective companies before presenting the golf prizes.

Supaturf Trophy for Head Greenkeepers and Trade 1. Gordon Tamblin, Mullion, 33 pts on back 9. 2. Tony Ramsden, Budock Vean, 33 pts. 3. Jonathan Bullen, Staddon Heights, 31 pts. Rhone Poulenc Trophy for Assistants. 1. Tony James, Tehidy, 36 pts, 2. Alan Gawman, St Mellion, 35 pts. 3. Terry Pascoe, Budock Vean, 34 pts.

Congratulations to Gordon Tamblin on his successful defence of the Supaturf Trophy after yet another strong challenge from Tony Ramsden who finished second again! Also, congratulations to Tony James on winning the Rhone Poulenc Trophy. It was nice to see so many Cornishmen in the prizes.

Our afternoon educational talk rounded off the day with Billy Spratt, of Phoenix Irrigation Services, presenting his excellent talk on "Starting your Irrigation System for the Season Ahead."

The Section would like to thank Billy for his superb presentation. Also, the Section would like to thank the day's sponsors, Supaturf and Rhone Poulenc for their continued support and to Dartmouth Golf and Country Club for allowing the Section use of their excellent facilities, and to all of Dartmouth's staff who made our day run so smoothly with special thanks to our Chairman, Terry Farkins, and his crew who had the course presented in superb condition.

Your attention is drawn to the pesticide courses the Section will be holding over the forthcoming months as the grandfather's clause for operators being withdrawn in the very near future. For more information please contact me on 01288 353438.

Richard Whyman



National Championship
Qualifiers: Gross score Alan Gawman, St Mellion, Net score Tony James, Tehidy.

South West

The hot and sunny month of May has now arrived and it's time to rummage through the cupboards and wardrobe and grab those essential summer items of the modern greenkeeper. These include an ill-fitting pair of tight shorts and a cheap and dodgy looking pair of black sunglasses picked up on a day trip to Western-super-Mare.

Hopefully by now the post August syndrome will have faded away and most of your members will be appreciating your efforts and hard work over the Winter and Spring months with a big improvement in the condition of the golf course.

The better weather should allow for some excellent golfing days this

Summer. The next tournament is the Greenkeeper/Amateur event which will be held at Tall Pines GC on 18 May. All entries must be received by the 14 May. In June there is a match against the South West Secretaries which will take place on the 16 June at Enmore Park GC.

Congratulations go to Dave Bougen on his appointment as Head Greenkeeper at Cirencester Golf Club. Dave, who has moved from Bath GC, is also Team Captain for the South West Section. Anyone who needs to contact him about team affairs should telephone him on his new number which is 01285 720112.

Now, turning to Education and training. I am still building up a list of names for each course which BIGGA can run. Many of these courses just need a few more places to be filled before the course can actually be arranged and run. In February we ran a Fire Safety for Greenkeepers day at Gloucester Fire Station which was a big success. I am also hoping to run a one day First Aid course in June. If you would like to add your name to this list or to any other course we can run, then please contact me on 01249 783382.

Paul Cunningham

South Wales

Unfortunately there is very little to bring you up to date with this month, which leads me to explain that our fixtures have not yet taken place when these notes go to press. Hopefully you all should have received this year's fixture list, but if not, please contact our Section Secretary, Peter Lacey, who I'm sure will be of assistance in sending you one.

I'm sure everything went well at WESTURF this year but I'll bring you up to date next month with the ins and outs.

You would also have played the Spring tournament at Southern-

down GC, so I'll also bring you up to date with that next month. A date for your diary: BIGGA versus Pencoed College Golf Match on 2 June at the College golf course with a 5.30 pm tee off time. After, weather permitting, we may have a barbecue. Anyone with any information please contact me Tel: 01656 742761

Richard Hatcher

Northern Ireland

North East

On 25 March we had our Section qualifier for the National Championship on 3 to 5 October to be held at Carden Park, Chester. The qualifying was held at Royal Co. Down. We would like to thank all who turned up on what was a very enjoyable day. The course was in excellent condition with very fast greens. Our thanks to all at Royal Co. Down.

Finally, we would like to welcome our newest member Connor McLaughlin from Donegal who is currently working at Stakis Park. Congratulations to Mark Cassidy who is leaving Stakis Park to take up the job of Assistant Head Greenkeeper at Lurgan GC.

We wish you all the best in your new position. Mentioned twice in two months, Mark is this a sign of things to come?... Good Luck.

Eamonn Farrell



The best net was Nick Webber and the best gross was Alison Sloan. First reserve is Pat Devine and second reserve is Mark Farrell.

See you all next month!

Model 425D 96" wide

Manoeuvrability, Safety and Accuracy

The 425D Articulator® features four articulating 25" cutting decks combined with a unique hydrostatic drive unit, and a Kubota 38hp water-cooled diesel engine. The result is a revolutionary, zero-turning radius, wide-area, contouring mower. The 425D has a wider wheel base, and lower centre of gravity to provide greater side-hill stability and safer cutting on severe terrain. A mulching kit can be added to dispose of leaves, and height of cut can be changed in just 5 seconds, giving you the finest finish mower in the world.



Our unique patented belt-driven articulating deck design gives you an unsurpassed quality and accuracy of cut

The Articulator®

"Quality rotary mowers for a world that isn't flat"

FREE DEMONSTRATION

Call for a free demonstration in your area NOW!

- Scotland: Double A Trading: Sandy 01382 330556
- North: Greenlay Ltd: David 01670 822857
- Midlands: MGM: Dean 0116 289 2595
- Wales: Major Owen: Andy 01766 770261
- South West: PJ Flegg: Paul 01404 815666
- South East: Marlwood Ltd: Keith 01622 728718

Marwood Limited

Court Lodge Farm, Forge Lane, East Parflesh, Maidstone, Kent, ME15 8HQ
Tel: 01622 728718 Fax: 01622 728720

Arne van Amerongen, currently working as a Supervisor for Harradine Golf in Dubai, gives some advice on using the local environment to its best advantage

Nature trek



Architects who try to impose their preconceived ideas on the tract of country on which they have been asked to design a new course, not only penalise their clients with exaggerated costs but frequently create huge unexpected problems.

Working with nature gives a natural acclimatised look to the new course.

Trying to reshape the landscape results in an artificial contrived appearance.

This is clearly demonstrated by the construction of a new Golf Course Golf De Lavaux in Switzerland, situated between Lausanne and Montreux. The site was a very rocky hillside at 700 metres above sea level.

Massive rocks weighing 10 tonnes and more had to be ripped out by a D-9 Caterpillar before anything approaching a level fairway could be graded out, let alone green sites.

Burying the rocks was not feasible because of the lack of soil to provide adequate soil cover over the mounts. The problem of disposal of these huge rocks could have been very costly, but they were incorporated into the design both as features and to impart character to the course. One has to consider safety, of course, but when the rough is full of rocks a few massive specimens to penalise

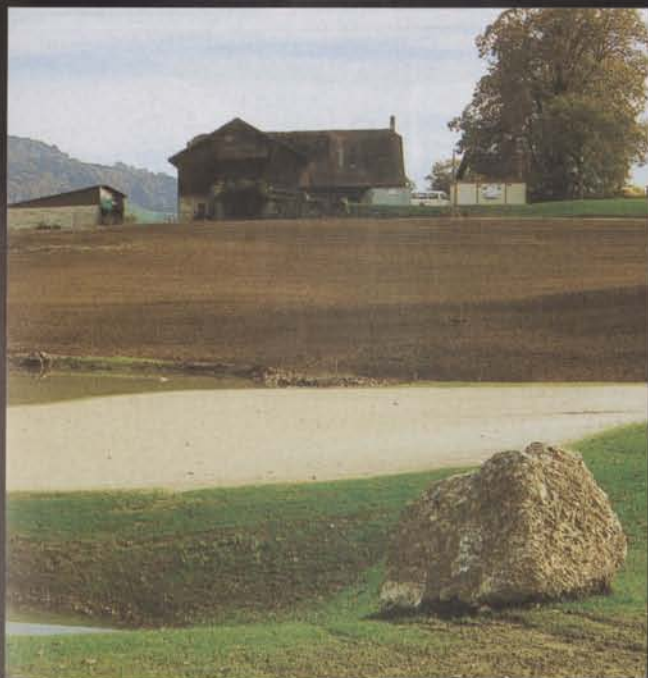


wayward shots cannot be unduly criticised! The rock is behind the green - not in the approach area.

Another sensible use was to spread rocks in the beds of streams to prevent washout and to create attractive torrents as shown in illustration 3. This prevents erosion, creates an attractive feature and finds a

useful home for large numbers of excavated rocks.

Only rarely are courses built in ideal environments. With less than perfect conditions, improvisation and the intelligent use of local materials is far more effective than trying to create an entire new artificial landscape as well as costing much less.




WEED FREE[®]

- Advice • Application •
- Supply • Training

DRIFT FREE Contract Spraying
utilising our purpose built machine

The **SPRAYING MANTIS**

Freephone: 0800 068 08 78

Fax: 07000 481022

Car: 0850 300104

Unit 14, Roundshead Drive, Warfield, Berkshire RG42 3RZ

WEED FREE is a Registered Trade Mark

Ad Ref 504

EVENPRODUCTS LTD, EVESHAM, WORCS, WR11 4TS. TEL: 01386 41212



LEGACY
by Hunter

**IRRIGATION
INNOVATIONS**

SPRING START-UP SPECIAL!

SPRING START-UP SPECIAL!

**AN URGENT MESSAGE TO ALL GOLF CLUBS
WAIT!**

Before you start up your irrigation system this year, please allow the latest Legacy by Hunter sprinklers to demonstrate their potential.

We will convert one of your greens from any other make of sprinkler to Legacy by Hunter sprinklers (max 6) absolutely free of charge.

To take advantage of this very special offer, telephone or fax us now.

Tel:- 01386 41212 Fax:- 01386 423769



Hunter
The Irrigation Innovators

EVENPRODUCTS LTD, EVESHAM, WORCS, WR11 4TS. TEL: 01386 41212

Ad Ref 609

Ad Ref 608

Sandblast Sign Company
Tel - 01357 440441

SIGNAGE SOLUTIONS

from the company dedicated to the Golf Course

- Tee Markers
- Tee Signs
- Yardage Posts
- Entrance Signs
- Traffic signs
- Waymarkers



- Concept Design
- Manufacture
- Installation
- Refurbishment

Look no further, call today for information pack

WHITEMOSS AMENITIES

THE PROFESSIONAL'S CHOICE

FOR

- TOP DRESSINGS • ROOT ZONES •
- BUNKER SANDS • PATHWAY GRAVELS •
- AGGREGATES •
- SCREENED SOIL & PEAT •



AND NOW AVAILABLE
DRIVING RANGE EQUIPMENT

Sales Office Tel: 01270 213456/211149
 Sales Office Fax: 01270 253772
 E-mail: whitemossa@aol.com
 128 Crewe Road, Haslington,
 Crewe, Cheshire CW1 5RQ

Southern Region: Adrian Masters: 07971 229068
 Northern Region: Mike Crabtree: 07970 815146
 Midland Region: Andy Law: 07970 752034

Whitemoss Quarry, Crewe Road, Radway Green,
Alsager, Cheshire CW1 1VJ

Ad Ref 608

Membership regions

BIGGA incorporates five Regions and 28 Sections, ensuring that there is a steady flow of information between grass roots level and the administrative headquarters.

Each Region has its own Board consisting of a representative from each of the Sections and is serviced by a Regional Administrator as follows:-



Peter Boyd -
Regional Administrator
for Scotland.

Covering Ayrshire,
Central, East, North and
West.

Tel. 0141 616 3440



Douglas Bell -
Regional Administrator for
Northern England.
Covering NorthEast, North
West, Northern,
Cleveland, Sheffield and
North Wales.

Tel. 0151 431 0433



Peter Larter -
Regional Administrator for
the Midlands.
Covering East Midland,
Midland, East of England,
Berks, Bucks and Oxon
and Mid Anglia.

Tel. 01480 437507



Derek Farrington -
Regional Administrator for
the South East.

Covering Surrey, Kent,
Sussex, London, East
Anglia and Essex.

Tel. 01903 260956



Paula Humphries -
Regional Administrator for
the S West and S Wales.
Covering South West,
South Coast, Devon and
Cornwall and South
Wales.

Tel. 01288 352194

BIGGA also has two sections in Northern Ireland



For more information on the many other benefits that BIGGA membership can offer you, and for an application form, contact your local Regional Administrator, or Tracey Maddison, Membership Services Officer, at BIGGA HQ on 01347 833800

Ad Ref 777

Chelation

MAKES THE DIFFERENCE



Longest lasting green-up.

AVONCROP AMENITY PRODUCTS

Head Office:
Northfield, Station Road
Sandford, Winscombe
N. Somerset BS25 5NX
Tel: 01934 820868
Fax: 01934 820546



Also at:
Eastern Road
Bracknell
Berkshire RG12 2UP
Tel: 01344 426600
Fax: 01344 428628

EXPERTS RECOMMEND REGULAR LIGHT DRESSINGS
OF GREENS, TEES AND FAIRWAYS

ULTRA PLANT

HAVE THE MACHINES TO DO IT



UB30S
Spinner Top Dresser.
Spreads to 5 metres.
Ideal for regular light
dressings of Greens
and Tees.



HL40
Highlift Trailer.
For loading top dressers,
gravel/sand hoppers,
bunkers, etc.

UB50
Precision Spreader.
Truck mounted or
tractor towed for
greens and tees.



UB60S
Spinner/Loader
Fairway Dresser.
The ultimate dual
purpose machine.
Spreads to 11
metres. For loading
top dressers etc.



FOR FURTHER DETAILS CONTACT:

TEL: 01868 747582

FAX: 01868 746387

ULTRA PLANT

The difference is Flowtronex

Whether you want to keep your green green or your pitch perfect, Flowtronex makes the difference.

Flowtronex variable speed pump sets are the heart of any irrigation system, boosting flow and pressure wherever it is needed to make the most of your landscape.

Integrating the latest in variable speed technology with superior design, engineering and construction, Flowtronex brings you energy savings of up to 50% and reduced maintenance costs.

And when you order a Flowtronex pump set you can have every confidence that it has been designed to meet your specific requirements - from bowling greens to championship courses.

With a pump set from Flowtronex you can see the difference.



FLOWTRONEX

2 Relay Road, Waterlooville, Hampshire PO7 7XA, England

Tel: +44 (0) 1705 268511 Fax: +44 (0) 1705 241263



Bill Oliver gives a helpful look into sprayer safety and new European and HSE standards of compliance with a view to up-dating or buying new sprayers.

it with confidence Spray



Does your sprayer need updating?
Will the one you buy comply with the latest machinery safety regulations?
What are these regulations?

You may find that equipment bought in the last 12 months does not meet required standards. I'm afraid there is a need to constantly reassess and accordingly up-date all machinery, not just sprayers, and to introduce engineering controls that further reduce injury and exposure to operator and the environment.

Employers have a duty to supply equipment that is safe for use. The new provision and use of work equipment regulations came into effect on 1 January 1998 and state that it is the responsibility of the end user, where reasonably practicable, to up-grade existing equipment to conform to the latest standards.

OK - where do we start?

First, for those making the best of what they

have already got. If your sprayer is lying in the yard; is over three years old; is rusty, with cracking pipes and a well-used pump, then it's not so much "What can I do?" but "How can I safely and legally dispose of the contaminated unit?"

If your sprayer is clean and has a good size pump it may be worth bringing it up to the latest standards. However, remember that paying out for the new add-on features for your old sprayer does not alter the fact that there is still the heart of an old unit underneath.

Second, for those looking at a new sprayer. There are lots of factors which you will have to consider in choosing the correct specifications which will work best for you and comply with all the latest recommendations and guidelines. Increased safety doesn't come without a price, but with this price you gain from higher work rates, a wider spray window and automation of essential functions from within the cab.

Contrary to popular belief size does matter. Larger capacities do save time, money and most importantly, reduce the amount of handling of concentrated chemicals.



What is right for you? With a larger tank you can maintain a higher work rate, although if the ground is soft or steep in some areas you don't have to fill the tank right up. Think first and then ask our advice. We at Gambetti make a large range of truck-mounted units of 350/450/600 litres and 650/850 litres for longer wheel bases.

Tractor-mounted sprayers are available from 200 to 1000 litre. Trailed sprayers range from 650 to 1500 litre with special units designed with you, for you.

However, many other factors influence the chemical application and price of sprayer.

Pumps

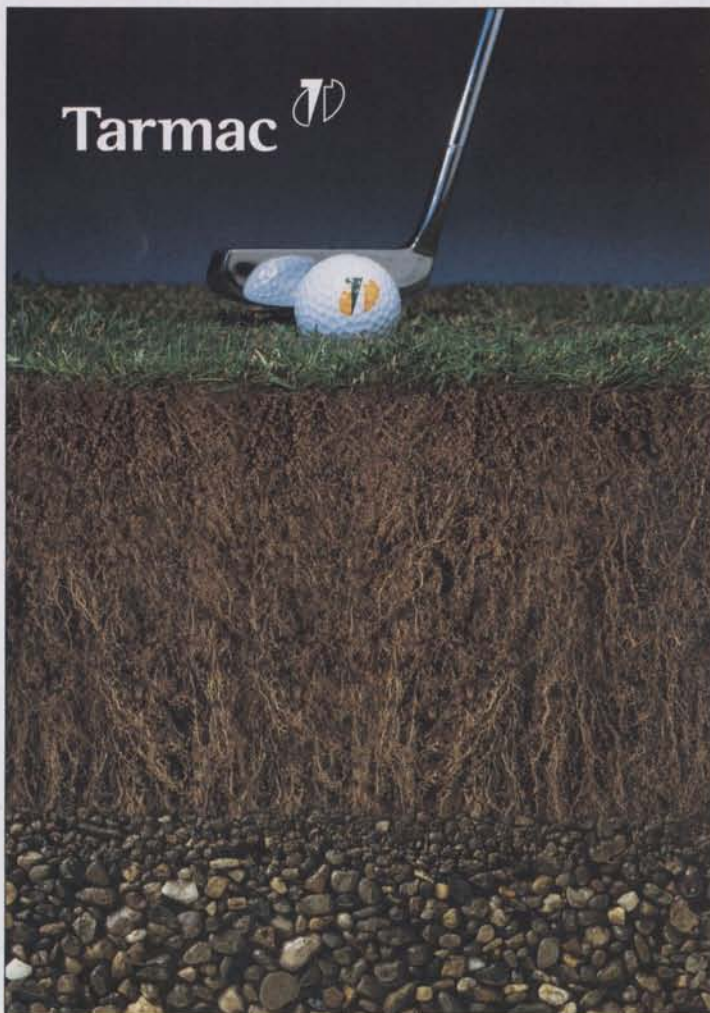
The diaphragm pump is the best for reliability and the ability to handle abrasive substances and suspensions. Beware, there are a lot of sizes. Some manufacturers sell small pumps on small sprayers but

a 3-diaphragm pump as standard gives excellent output without having to run at full throttle, thus relieving wear and tear on the pump and giving a smoother, quieter vehicle.

Controls

Pesticide regulations state that you must have a pressure balance unit such that if you turn off one section the others should not increase in pressure. I have yet to see the same in writing for sprayer legislation. This type of control will also allow for increase/decrease in forward speed as long as you do not change gear. Beware hydrostatics! Hydraulic drive pumps have similar increase/decrease as direct drive units and usually are within plus or minus 2% of sprayer output but please check induction tank/chemical hopper.

Here's where there are big changes under Supply of



Great golf is built on

Topsport

At Tarmac we take sport and leisure extremely seriously.

Created to satisfy the most exacting professional requirements, Topsport is a tried and tested range of specialist products for use in the construction and maintenance of a vast array of sports and leisure surfaces, and has been used by some of the UK's premier sporting venues.

Used extensively by golf courses throughout the UK, including Royal Birkdale, our impressive range of rootzones (up to USGA Standard), topdressings, bunker sands, pathway materials and drainage aggregates ensure maximum performance all year round.

Topsport products can be supplied nationwide and are matched by first-rate technical and sales support from Tarmac Quarry Products, the UK's largest aggregate producer.

Not only determined to meet, but to exceed customer expectations, our aim is to ensure that whatever your particular needs, Topsport has the proven experience, quality and expertise to help you achieve perfect results.

**For further details on any of the
Topsport range of products telephone**

01298 213740

Tarmac Quarry Products Limited, Moorcroft, Lismore Road, Buxton,
Derbyshire SK17 9AP.

Machinery (Safety) Regulations BS EN 907 Agricultural and Forestry Machinery Sprayers and Liquid Fertiliser Distributors.

Chemical Induction Hopper

The BS EN 907 standard states that sprayers shall be equipped with a transfer device and HSE takes this as a device complying with ISO 5681: 1992 and meeting the test standards of BS6356 parts 8 and 9. The EN 907 standard does go on to say that "if this is not possible" the filling hole on the sprayer shall be so positioned that the height from the ground or from a platform is not more than 1500 mm and the horizontal reach between the rim of the hole and the rim of the tank shall not be more than 300mm. The important words are "if not possible."

A manufacturer's technical file must show that it is not possible to fit a transfer device before they take



advantage of the direct filling into a sprayer using the dimensions referred to. Examples of when the "not possible" derogation may be applicable would be if the induction hopper caused stability problems on the sprayer (eg if the system was very large in relation to

the sprayer) or if there was no safety benefit from fitting it (eg the induction system could only be fitted in such a way that filling had to be carried out at a similar height as filling direct into the spray tank.)

HSE would look very critically at any claim that fitting any form of

induction system was not possible. Certainly cost would not be a factor normally taken into account in such a decision and, for example, HSE would not consider claims that an induction system could not be used because the sprayer pump had too low an output for the sys-

XRT 272™

ARRIVES TO CONQUER ALL TERRAINS...

Club Car®

The utility vehicle designed specially for Xtremely Rough Terrain.



- 11-horsepower, 351 cc engine
- Four-wheel hydraulic brakes
- Independent front suspension coupled with semi-independent rear suspension
- Aluminium I-beam construction and aluminium cargo box

Call the Sales Hotline: 01235 537575

Club Car UK Plc Dunmore Court, Wootton Road, Abingdon Oxfordshire OX13 6BH

NEW CLUB CAR ALL-TERRAIN VEHICLE FEATURES DIFF-LOCK TRACTION

Club Car has launched the new XRT 272 rough terrain vehicle for construction, greenkeeping and general maintenance applications on golf courses. Based on extensive input from golf industry customers, the versatile XRT 272 model features a strong, durable design combining excellent load-pulling and hill climbing power with superior stopping ability, enhanced stability and increased traction via a differential lock system.

The XRT 272 model is a multi-purpose utility vehicle - it can easily be transformed from construction to maintenance mode simply by replacing its heavy-duty, all-terrain, four-ply rated tyres with turf tyres for working on grass. The XRT 272 vehicle is also fun to drive, providing versatile and tangible proof that utility vehicles can be tough and attractive at the same time. Users can customise the XRT 272 with accessories such as a light bar with halogen worklights; a 680 kg (1500lb) rated, remotely-operated front or rear-mounted winch; a hydraulic dump or electric lift bed; side step bars; a heavy-duty brush guard; a bed liner; a canopy top and windshield and beverage holders.

While competitive products have been engineered for other applications and then adapted for golf course use, the CLUB CAR XRT 272 vehicle was designed specifically for golf course professionals. "During golf course construction, tough ground conditions are often encountered. We have engineered a smarter, stronger, more versatile machine - one with power, stability, traction and stopping power to conquer trackless terrain and work harder in the field, where it counts," said Jerry Hanss, Regional Manager for Club Car Europe. By combining these advanced features, Club Car has created a utility vehicle that is without doubt the best in its class."



tem to work as a fair reason for not fitting an induction system - if this was the case it would suggest that the manufacturer had not met essential health and safety requirement 1.1.2 that relates to integrated design.

Overall HSE considers that in all but the most exceptional circumstances induction systems should be a standard fitting.

From a wear point of view I would also recommend a venturi type unit which puts the chemical into the tank without being taken through the pump in neat concentration, thus relieving clogging and wear on valves. This will not allow any neat chemical to be accidentally left in either the control or the pump. Concentrated chemical is thus never pressured over 0.5 bar.

Clean Water Containers

BS EN 907 is clear that all sprayers shall be equipped with a clean water tank with a minimum capacity of 15 litres. There is no exemption for small sprayers. HSE therefore considers that a clean water supply should be a standard feature of all sprayers.

Protective Clothing Lockers

BS EN 907 does not cover these

nor, specifically, does the Supply of Machinery (Safety) Regulations. However, it is still the view of the HSE that to meet the duties imposed by Section 6 of the Health and Safety at Work Act 1974, they are an item which should be provided with any sprayer to help avoid the contamination which will be inevitable if contaminated gloves or clothing have to be kept in the cab.

Hose Pipe Holder

This holds the hose a safe distance from the contaminated tank to prevent suck back into the mains water supply but also stops the next user of the hose from being contaminated.

I would like to see the following safety features added to the above list.

Multi Turret Nozzles

These cut down on nozzle change contamination. They encourage operators to select the correct size of nozzle tip to give the correct droplet size on the spray target, thus cutting down drift and using expensive chemicals to full effect environmentally. It can now be considered an offence to the environment if spray drift is

deposited other than on target.

Swath marking with foam marker and spray dyes also increases the accuracy of chemical application by minimising overlap and overdosing.

Low drift nozzles are very good and I hope to do an article very shortly on these.

Some of this article will seem very basic to trained end users but there are hundreds, probably thousands of sprayers in golf/amenity use that do not come close to these safety specifications from the HSE let alone the new legislation from the Environmental Protection Agency. Most sprayers are very poorly looked after but expected to be ready for use at any time and in an emergency.

I hope I've helped and look forward to seeing all of you at shows and on my travels. Have a good year.



Bill Oliver works as Technical Sales for Gambettibarre (UK) Ltd who also supply the Rogers Windfoil Booms which fit on any sprayer.