

The BIGGA Silent Auction was given a boost with its first Masters Club donation, a Sisis Hydraulic Veemo tractor mounted scarifier



Have you heard?



The Sisis Hydraulic Veemo tractor mounted scarifier

Sisis has donated its Hydraulic Veemo tractor mounted scarifier to BIGGA's Silent Auction.

"Sisis sees the Silent Auction as an interesting idea to spice up BTME and we shall be watching its promotion on BIGGA's Website with great interest," said Publicity Manager Lynn Hilton.

Sisis' decision to take part in the Auction was welcomed by BIGGA's Executive Director Neil Thomas.

"We are delighted to welcome Sisis on board and are sure that there will be much interest in the piece of equipment donated," said Neil.

"It is pleasing that so many companies from within the industry and beyond have warmed to the concept of the Auction," he added.

The Veemo is a purpose designed scarifier, ideal for fairway use, featuring sharp, strong cutting blades for

maximum thatch removal with minimum disturbance. The double-ended blades are reversible to increase their working life.

It works well on undulating ground as it has three independently mounted, fully floating heads which follow

ground contours without scalping'. Depth of cut is infinitely variable by means of a micro-adjuster on each unit. This patented feature is unique to SISIS machines

Valued at £6,684 the Veemo is the first donation to The Masters Club.



Is your club thinking of purchasing a scarifier? Why not bid for one, and stand a chance of getting it for half the normal retail price? Make your bid by either:

Phone: 01347 833800

Fax: 01347 833801

E-mail: reception@bigga.co.uk

Post: BIGGA HOUSE, Aldwark, Alne, York YO61 1UF or in person at BTME2000

Lot No.	Item description	Item value	Start bid
001	Bernhard grinder A	£6,000	
002	Bernhard grinder B	£6,000	
003	Sisis Veemo scarifier	£6,684	



What is the Silent Auction?

It is a novel and exciting new feature which gives the opportunity to bid confidentially for a varied array of donations kindly provided by members of the trade. From October '99 anyone can then 'bid for a bargain', so don't worry if you're not a Greenkeeper, there's something for everyone.

If I donate an item, how will I benefit?

Greenkeeper International

- Initial profile on donated item
- Monthly publicity July to January 2000

The Internet

- Profile of the donated item on the Silent Auction site

- Direct link to your own website

Catalogue

- Profile of donated item and colour picture

Press Reception & Buffet at BTME2000

I'm a member of BIGGA, how do I benefit?

Well, there's the opportunity to bid for a bargain, and be the envy of your friends and colleagues with the possibility of acquiring a new piece of kit, a collectors item or a well deserved break, for a fraction of the retail price. Not to mention 'lots' more fun at Harrogate.

Where does the money go?

The funds raised will go towards:

- The BIGGA Building Fund
- The continuing development of Greenkeeper education through training programmes and facilities
- The active promotion of BIGGA

How do I find out up to the minute information on the Silent Auction?

By 'surfing the net' - and at the touch of a button. The site is updated every time someone makes a bid and the site itself highlights all that you need to know such as details of the last bid, new donations and progress so far.

How do I bid?

Well that's up to you, but you can choose from;

- by post
- by phone
- by fax
- by email
- in person at BTME 2000



Any other questions?

Just call Jenny Panton on 01347 833800 and she'll deal with all of your Silent Auction questions personally.

Bailey's peat-free topdressing

In response to Greenkeepers concerns Bailey's of Norfolk have developed a peat-free USGA specification topdressing in which the organic amendment is supplied from a sustainable source. As with all their topdressings Eco-BJD1 is continually monitored for quality through their 'in-house' soil analysis laboratory and is delivered with an up-to-date analysis sheet.

"As concern about the environment continues to grow golf clubs must demonstrate wherever possible ecologically sound management. Traditionally peat or fen soils have been used to improve the organic matter content of nutrient poor root-zones, however, Peatlands are now becoming endangered ecosystems," said John Farrell, of Bailey's

Telephone John Farrell on 01603 754607 for further details.

Allister earns Perpetual Cup

John Lindsay (left), of John Lindsay Professional Sportsturf, continued his support for Greenkeeper education by presenting his Perpetual Cup and Travel Award to Allister McEwen, of Spa Golf Club.



A Ryder Cup home from home

Anyone with tickets for September's Ryder Cup at The Country Club, Brookline Massachusetts, and who is still seeking accommodation might be interested in a four bedroom house a mere three minutes from the course.

The house has two double and two single rooms as well as a large basement if required and the owner is prepared to cook and ferry the tenants to and from the course if requested.

For further information contact Ailsa Wade Tel: 01577 865607 (after 4pm).

Kubota opens new showroom

A brand new machinery showroom, parts store and workshop facility dedicated to the supply and support of Kubota compact tractors, ride-on mowers and professional and domestic garden machinery was opened last month.

Located in Christchurch, the all-new Procure Kubota Centre is scheduled to be opened by Mr Massey Miyake, Managing Director of Kubota (UK) Ltd, accompanied by James and Julian Macklin, co-directors of CPT Procure.

The Procure Kubota Centre represents a joint investment by Kubota (UK) Ltd and CPT Procure, Kubota's appointed area dealer. It has been designed from the ground up to provide domestic and professional customers with a dedicated one-stop shop for the complete Kubota product range, encompassing top quality garden machinery, market-leading compact tractors with matching implements, and high performance professional and domestic ride-on mowers.



"The new Procure Kubota Centre represents a major investment by Kubota and CPT Procure. "It is extremely well situated and dedicated 100 per cent to the demonstration and sale of Kubota products, supporting customers with genuine parts, first class service and individually-tailored

financial packages. We look forward to welcoming past, present and future Kubota owners at the new Procure Kubota Centre and signing them up as members of the Kubota Owner's Club," commented Tom Barnes, Marketing Manager of Kubota (UK) Ltd.

Keith is new lecturer at Merrist Wood College

Merrist Wood College has added Keith Harrison to its expanding team in Greenkeeping and Sports Turf Management. Keith, who took up his position at the beginning of June, will have special responsibility for developing and co-ordinating a programme of work-based assessment and training for employees in the Sports Turf, Greenkeeping and Grounds Maintenance sectors.

Keith comes to Merrist Wood from Brinsbury College in West Sussex, where he spent 14 years in a number of roles, including Head of Horticulture and latterly, as Head of Faculty. During his time at Brinsbury, Keith was involved with the development of work-based programmes,

among other responsibilities.

Keith is ideally placed to forge further industry links for the College, through his extensive network of contacts, developed over the last 23 years.

Returning to his specific interest of Sports Turf Management, Keith is enthusiastic about his new role.

"I am pleased to be joining Merrist Wood. The excellent facilities and the very positive outlook of my new colleagues will help to facilitate the bringing together of students, employers and the College, for the benefit of the industry as a whole," said Keith, a former Lancashire League cricket groundsman, Head Greenkeeper and Head Groundsman at an independent school.



A veritable army of greenkeepers at Wentwood Hills

Jim McKenzie, Director of Golf at Celtic Manor, was so determined to ensure the new Robert Trent Jones Jnr-designed Wentwood Hills course was in pristine condition for its first professional tournament, the PGA Mastercard Tour event, that he used 46 greenkeepers every day.

The staff worked for three hours from 4.30am. Fairways, greens and even fringes were stripe-cut every morning and eight men raked the bunkers.

"We used this as a dry run for The Welsh Open being staged here next year and have learned a lot. The kind comments were a tribute to the hard work of our staff," said Jim.

The course, which it is hoped will host the 2009 Ryder Cup, had been opened the previous month with a special match between local hero Ian Woosnam and this year's Ryder Cup Captain, Mark James.

Jim is pictured with MasterCard winner Lee James.





Dear Neil,

I greatly appreciate your writing to me about my husband. It has been extremely comforting for me and my family to receive so many wonderful letters.

I am grateful for your sympathy and perhaps you could convey our thanks to all your members.

Willie was always proud of his association with BIGGA.

Lady Whitelaw, Penrith, Cumbria

Velvet comments 'unfortunate'

Jim Arthur's comments on the properties of velvet bents (June 1999) are generalisations and unfortunate in their tone. The April article from IGER's forward thinking Danny Thorogood was specifically discussing how far the species has developed since the poor-performing pioneering variety Kingstown.

To say that Avalon is "only an improved strain" of Kingstown is to dismiss all plant breeding successes in creating better turf grasses - of any species - in recent years. Unfortunately, long gone are the days when courses only dealt with a select membership. The golfing boom has led to a huge increase in the pressures put on the course itself. In reaction to this, all courses are now benefiting from the

modern, much improved varieties made available through today's breeding programmes.

Avalon offers significant improvements over previous velvet bents in disease resistance wear tolerance and establishment. Regarding Jim's specific reference to Poa annua competitiveness, Avalon will out-compete Poa as its high shoot density makes it very difficult for weed species to establish.

It may well be that velvet bents are 'not the answer' for every course in the UK, but our advice - backed up by the experience of European and UK greenkeepers - is to try Avalon on one or two greens first and assess its performance.

Simon Taylor
Director, British Seed Houses

Is there anybody out there?

As a greenkeeper of more than ten years standing I feel compelled to write to highlight some of the reasons why more and more greenkeepers are leaving this country to work abroad.

I have worked hard to get to the level of Head Greenkeeper, spending a lot of time and money to pass exams to do so.

Having been advised to go for a Head Greenkeeper job at a club that was subsequently found to be in financial difficulties I was made redundant after just eight months.

But I was determined to stay in the profession and applied for a post in the

Republic of Ireland which cost me over £300... for a 20 minute interview.

Since then I have applied for more than ten posts advertised in Greenkeeper International and have had just one reply. A young lad I had training under me in my last job has also applied for lots of jobs and every application letter he wrote has been ignored.

Is this any way to treat had working professionals. No wonder so many are leaving to work abroad and I am seriously considering leaving the profession.

Stuart Lusty, Gloucester

Honorary Membership thanks

May I express through your columns my gratitude for the Association's invitation to Honorary Membership, for the Chairman's kind visit with his wife and yourself to my home in Woodstock and for the beautifully framed Certificate of Honorary Membership which he presented to me. My wife wants me to say how much she appreciated and is enjoying the bouquet of flowers which Mrs Marion Child gave her.

It was a particular pleasure to receive this distinction from your Chairman,

Gordon Child, whose friendship I have valued for many years and whose work on behalf of the greenkeeping profession I have admired for even longer. I feel confident in a bright future for the Association when I consider how far the Executive and Board have brought the profession in the relatively short time since the 'I' was put in 'BIGGA'; but if they still have any mountains to climb, I am sure that we shall only find them at the top.

Fred Hawtree

What service!

I - or rather my wife for me - placed an order for some Stylo rain gear on a Monday. It arrived the following Saturday and everything fits like it

should. I'm very happy with the quality, and nothing less than amazed at the service.

Thanks very much and keep up the good work.

Craig Smith, Golfclub Glashofen-Neusass, Germany

Let's keep it SIMPLE

You need SPARES ?

We got
SPARES !

You need
SERVICE ?

We got
SERVICE !

and

We got
NUMBERS

OCMIS IRRIGATION

Head Office	01460 241939
Scotland Office	0131 220 2102
Ireland Office	(1) 235 4020



Strength, creative thinking and teamwork

When William Webb Ellis first picked up the ball and ran with it at Rugby School all those years ago, the game of rugby was created.

The game now relies on a careful blend of strength, creative thinking and teamwork, played on an international stage and followed by millions of informed individuals.

Textron apply the same formula to their business and have created a world ranking Turf Care and Specialty Product group, which comprises the product muscle of Ransomes, Jacobsen, Cushman, Ryan, E-Z-GO and Iseki.

Our goal is to make it easy for you to do business with us and offer you the best and most comprehensive range of products on the market. Good for the industry, good for business and good for you.

For more information on products please phone 0500 026208.



TEXTRON
TURF CARE AND SPECIALTY PRODUCTS

RANSOMES • JACOBSEN • CUSHMAN • RYAN • E-Z-GO • ISEKI

Bruce Stanley takes a look at the past, present and future development of electrically-powered machines within the turf maintenance industry



On a charge



The application of electric motive power for turf maintenance has not travelled too far over the past 70 years.

Those who welcomed the introduction of the E-Plex battery-powered greens mower in 1994 may be surprised to learn that the name on the side of that machine is the same as that found on the world's first mains electric lawn mower, built and patented by Ransomes in 1926.

Produced in 14in, 16in and 20in versions, the Bowlic, as it was known, proved popular both for cutting bowling greens and domestic lawns. The major drawbacks, as with hand-held power tools later on, were the working restrictions imposed by the length of the lead and the ready availability of a suitable electric supply point, plus the constant danger of inadvertently snipping the cord in two.

Thirty or so years later, Ransomes, and others, attempted to overcome all three problems with the introduction of a battery-powered pedestrian lawn mower.

Although Ransomes continued manufacture of 14in and 16in machines until 1970, the mower never became a world beater due to the fairly basic lead-acid battery technology of the time. Arriving straight from the motor industry, the battery had to be large and heavy to hold sufficient power to cover a reasonable area of grass. If the sward became too long or thick, battery life was dramatically reduced.

Another problem was the need for frequent battery maintenance and recharging, tasks all too often neglected by the average homeowner, especially over the winter months. The

result? Costly expense on a replacement battery much sooner than the mower's salesman had forecast.

However, it is a different story when batteries are used throughout the year to provide motive power for commercial or professional operations. In such conditions, it is in the economic interest of the owner, manager or operator to make sure that the power source is properly maintained and regularly re-charged.

Demand for a battery capable of delivering and maintaining its rated output over a continuous, extended operating period led to the development of the 'deep cycle' battery which has thicker plates than the normal 'starting' battery found in road vehicles and tractors.

In the case of the deep cycle battery, both discharging and recharging take place over extended periods while the alternative starting battery is designed to deliver a high current over a short period, vital when cranking a petrol or diesel engine.

The major design characteristic of the deep cycle battery is its ability to discharge up to 80% of its stored power over a very high number of cycles. The final number will depend on its rated capacity and the operat-

ing conditions, temperature and maintenance schedule, but should not be less than 450 cycles for a six volt battery.

The first electric vehicles used on golf courses appeared in the USA in the early 1960s. Derived from industrial work trucks, these golf carts or "buggies" rapidly achieved great popularity, transporting golfers quickly, conveniently and quietly between shots.

This last point was very important on the many new courses being constructed as part of residential and resort developments, close to private houses, hotels and holiday homes.

The status of the buggy was soon confirmed by the installation of purpose-designed cart tracks adjacent to fairways on many of the new courses built in the USA from the 1960s onwards. As a result, 80% of the courses "over there" now have electric golf carts, with North America taking the lion's share of a total annual world market put at 150,000-plus vehicles.

In the UK it is a totally different story, with electric carts currently available on less than 10% of courses. The reasons include a lack of suitable and dedicated track ways on

which the buggies can run and an apparent ingrained resistance to the use of battery motive power. And it's been a similar tale when it comes to grass-cutting machinery.

The world's first ride-on electric greens mower made its debut at the GCSAA show in Dallas in early 1994.

Coming from the same stable as Cushman, the Ransomes E-Plex made use of Cushman's long experience in the manufacture of industrial electric work vehicles. In fact, the E-Plex's electrical technology and major components - batteries, drive motors and switch gear - were all derived directly from the Cushman development programme. Ransomes concentrated on the cutting units, operating platform and novel features such as the swing-out centre unit, facilitated by the absence of any hydraulic pipes.

The silent, pollution-free operation of the E-Plex proved an immediate attraction in the USA, particularly on courses within residential and holiday complexes. Sales were led initially by the E-Plex's environmental features, but users quickly discovered a further benefit in dramatically reduced maintenance requirements and running costs compared with an equivalent petrol or diesel-engined machine.

Annual savings of 50 per cent are not uncommon, with one public authority in the UK recording total maintenance and running costs of just over £1,000 in three years, making the E-Plex one of the most economical machines in its fleet. This machine has also proved the doubters wrong by cutting 19 greens on a hilly course without faltering, always returning safely to the shed for overnight recharging.

The technology used by Ransomes and Cushman in the original E-Plex and E-Plex II greens mowers has since appeared in the Jacobsen Greens King Electric, launched in 1997.

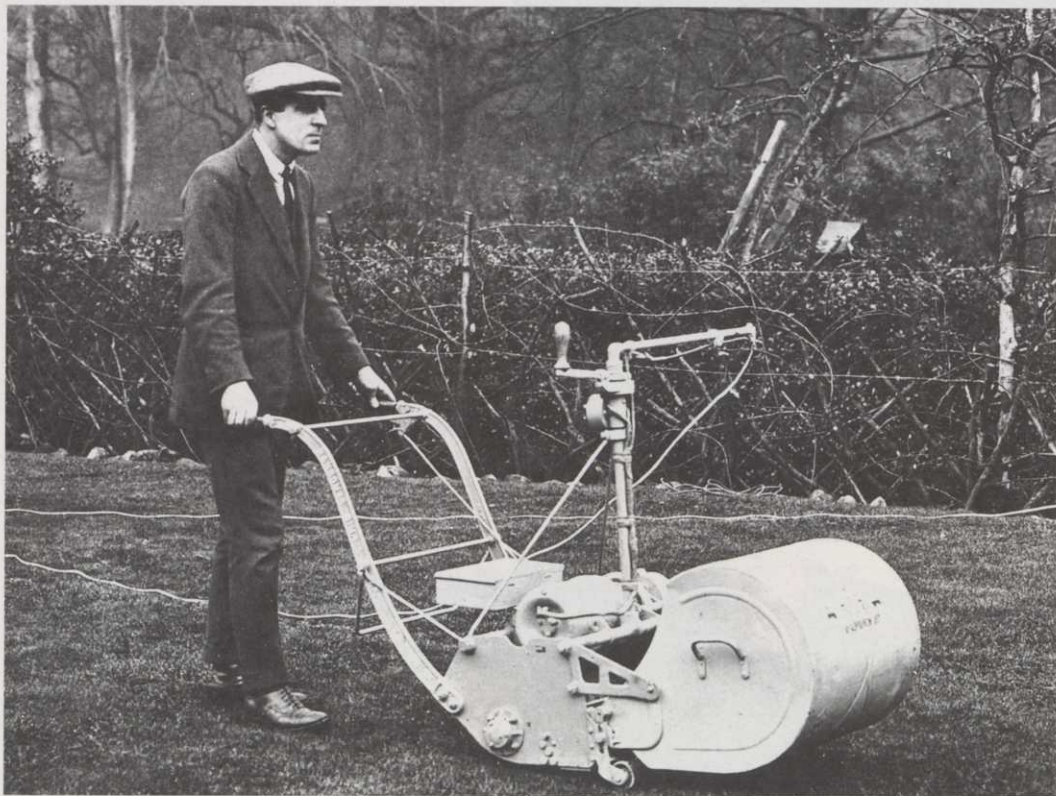
Any machine which works on or close to golf greens or tees at any time of the day needs to be as quiet as possible. So the next logical development following the electric greens mower was the self-propelled bunker rake, answered by Jacobsen in 1998 with the Sand Scorpion, which uses the same battery pack and wheel drive motors as its greens mower.

At the 1999 GCSAA show in Orlando, Ransomes unveiled a prototype electric walk-behind greens mower equipped with a single 12-volt battery, bringing back memories of

Previous page: Cushman's expertise in the manufacture of battery-powered industrial trucks and work vehicles was used in the development of the E-Plex electric greensmower.

Below: The Ransomes Bowlic - a mains electric-powered lawnmower from 1926.

Facing page: The E-Plex offers economical, virtually silent operation with no pollution or concerns over oil leaks.





the original battery-powered mower first produced by the firm back in the 1950s. Today's battery pack is somewhat smaller.

Yet, as in the motor industry, it is the number, size and capacity of the currently-available batteries which is limiting the development of electric power within golf course maintenance.

It is one thing turning the wheels, but it is quite another to drive cylinders, groomers, verti-cut units and other attachments and never quite knowing how long the batteries will last before the machine comes to a halt. To avoid this, both Ransomes' and Jacobsen's electric mowers have circuitry which automatically cuts out drive to the cylinders when the batteries fall to a 30% charge level, leaving sufficient power to return to the sheds.

The introduction of the deep cycle battery helped extend working life greatly, but it is still a lead-acid battery. Although its capabilities have improved significantly over the past 20 years, such batteries remain bulky and weighty in comparison with a petrol or diesel tank.

There has been talk of battery-powered fairway mowers, but battery technology is not yet sufficiently advanced to provide enough power to mow all the fairways, and travel between them, and provide a mower which is not too heavy or cumbersome.

The alternative is likely to be a hybrid combining an internal combustion engine and battery power,

switching from one to the other depending on the proximity of golfers or buildings.

As for turf maintenance vehicles, the diversity of their tasks makes it virtually impossible to estimate how long the batteries will last before they need recharging. The same goes for other machines for which electric power would be acceptable, simply because of the unpredictability of the load. It is therefore unlikely that lead-acid batteries will be used on their own to power on-course vehicles other than personnel transporters, greens mowers and bunker rakes.

But what of the future? There is growing excitement over the development by American company, Metallic Power, of zinc/air fuel cells as an alternative to lead-acid batteries.

Fuelled by zinc pellets which combine with oxygen to produce electricity, the system is said to have three times the energy efficiency of a petrol engine. There are no emissions, the fuel source is totally recycled and recharging takes only five minutes. In tests, zinc/air fuel cells have delivered four to seven times more energy per pound weight than traditional lead-acid batteries.

Leading companies within the turf industry, including Textron, are now working closely with Metallic Power to maximise the performance and efficiency of this new power source in practical applications. As the saying goes - watch this space!

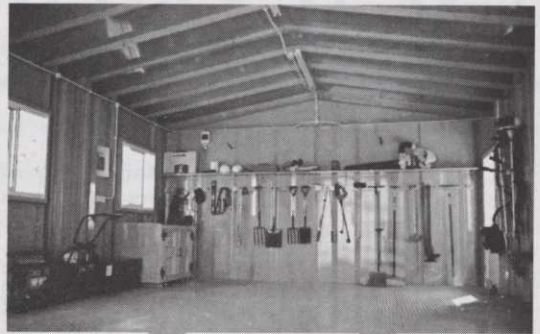
NEW

SITESAFE

MODULAR SYSTEMS



...make all the difference to secure storage & accommodation units.



GARAGE



PAVILION



WORKSHOP

For further information please contact:



Irvine Weston on Tel: 01427 752058 or
Cleveland Sitesafe Ltd. Park Farm,
Dunsdale, Guisborough,
Cleveland. TS14 6RQ.
Tel: 01642 475009 or Fax: 01642 471036.

Choose
the most
reliable
path...



For standalone
or PC operated

Two Wire Irrigation
Controllers



heron

Unit G15, Rudford Ind Est, Arundel, Sussex, BN18 0BD
Tel: 01903 724343

BIGGA Education & Training Manager, Ken Richardson looks at the educational opportunities available to members, and also gives details of the BIGGA Essay Competition.

EDUCATION UPDATE

BIGGA House Supervisory Management Courses and Regional Training Courses

The deadline for applications to attend the BIGGA HOUSE and/or Regional Supervisory Management Courses is fast approaching. With a total of 33 courses, covering 14 different subjects in 17 locations, these courses have something for everyone.

Thanks to contributors to the BIGGA Education and Development Fund we keep costs to a minimum with prices from £30 for a two day residential course. Two day Essential Supervisory Management Courses, covering the same subject matter as the BIGGA course are regularly advertised at £750. These prices do not include accommodation or food.

The message is simple. Use these courses or lose them. The BIGGA HOUSE Supervisory Management Courses are recognised for their high quality and value. All five weekly courses will be held in the new BIGGA HQ offering vastly improved training facilities, which, coupled with the improved facilities at Aldwark Manor, offer even better value for money. No wonder that delegates to previous courses keep returning, expressing amazement that more golf clubs do not send their staff. Full details of all courses are available from BIGGA HOUSE and were included in the June edition of this magazine. A full list of local train-

ing courses, together with an application form is included with this magazine and further copies are available from BIGGA HOUSE.

Details of both BIGGA HOUSE and Regional Courses are also available on the BIGGA Internet site (<http://www.bigga.org.uk>)

The Learning Experience 2000

The Learning Experience 2000, in association with Textron Turf Care and Specialty Products, is less than 160 days, and final adjustments are being made to the National Education Conference, Workshop and Seminar Programme. The full programme together with a booking form will be included in the September edition of this magazine. Make sure that you return your application form as soon as possible. Places have been booked already for the BTME Banquet, for the National Education Conference and for the Seminar programme.

The BIGGA Essay Competition

I am sure that the winning essay from the 1913 Greenkeepers Essay Competition must have given many of ideas for the 1999 BIGGA Essay Competition. Remember that your entry should reach BIGGA HOUSE by 29 October so you do not have much time left to plan and write your 2000 word entry. Full rules are available from BIGGA HOUSE.

Pesticide Safety

The British Agrochemicals Association (BAA), the trade association for companies engaged in the production, formulation and manufacture of pesticide products aims to:

Represent the industry.

Explain its role and the benefits of its products.

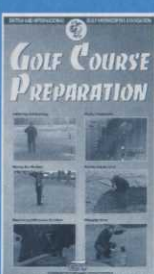
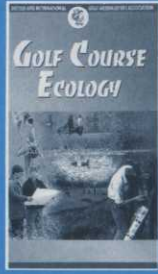
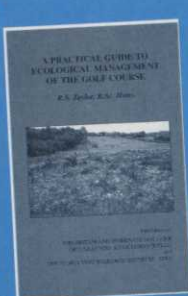
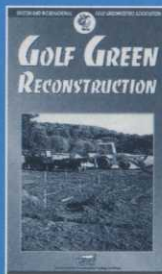
Encourage high professional standards, within the industry.

Place the Industry's views before Government, associated industries and the general public.

Feedback views of others to its members.

The BAA also produces a wide range of publications, including leaflets on sprayer cleaning, How to avoid spray drift, hand protection, disposal, training, protective clothing etc, the BAA Amenity Handbook and COSHH Assessments to name but a few. All of the publications, mentioned, are available free of charge from: British Agrochemicals Association, 4 Lincoln Court, Lincoln Road, Peterborough, PE1 2RP.

ON COURSE WITH BIGGA EDUCATION



Golf Course Preparation Video
 £14.95 to BIGGA members
 £29.95 to non-members

Golf Course Reconstruction Video
 £14.95 to BIGGA members
 £29.95 to non-members

Ecology Book
 £3.00 to BIGGA members
 £7.00 to non-members

Ecology Video
 £14.95 to BIGGA members
 £29.95 to non-members

Raising the Standards of Mowing Management Video
 £14.95 to BIGGA members
 £29.95 to non-members

Setting the Standard in Spraying Application Video
 £14.95 to BIGGA members
 £29.95 to non-members

During the 'summer' month of June BIGGA's Membership Services Officer, Tracey Maddison was pleased to welcome over 55 new members who joined the Association. Read on to find out how BIGGA greenkeeping membership benefits you...

BIGGA welcomes...

Did you know...
 If you find yourself off work because you have had an accident, as a full greenkeeping member your membership automatically covers you under a personal accident insurance policy?
 I know at least one of our members who does! I had a call recently from a member who had broken his arm, he had an accident out of work and was consequently signed off, he wasn't sure if he could still claim because the accident happened in his own leisure time, so he rang me at headquarters, I was pleased to be able to tell him he was covered and gave him the claims line telephone number, although he did have a spot of trouble writing the number down, he broke his writing arm!

I certainly don't want to tempt fate, but if you do find yourself in a position similar to our member above, even if the accident happens on holiday, you are covered! Maximum cover is £7,500 and there is also a weekly payment of £35 payable (after the first week, for the first 12 weeks of benefit) and then £45 per week thereafter for up to two years if the member is partially or temporarily disabled as a result of an accident.

The claims procedure is this:
 In the event of an accident likely to give rise to a claim you should immediately notify Lambert Fenchurch UK Group Limited on 0161 237 3377.

Scottish Region

Frank James Burns, Ayrshire
 Michael Cathcart, Ayrshire
 Kenneth McQueen, Ayrshire
 Ross Prowse, East
 Derek Duncan Smart, East
 Greg Alexander Smith, North
 Grahame Taylor, Central

Northern Region

Richard Burkitt, Sheffield
 Stephen John Dale, Northern
 Paul John Davies, North Wales
 M I Gent, Northern
 William Horsewood, Sheffield
 Thomas Ince, North West
 James Leeming, North West
 Robin Lingard, Sheffield
 Peter Lloyd-Jones, North West
 Guy Martin, North East
 Stephen Norton, Sheffield
 Garry Suddaby, Sheffield
 Jon Watson, North East

Midland Region

John Robert Boughey, Midland
 GS Brown, Mid Anglia

Jamie Coxall, Midland
 Geoffrey Allen Lawrence, East
 Midland
 John Robert Nolan, Midland
 Christopher Marc Notley, Mid
 Anglia
 David Henry Poots, East
 Midland
 Barry Wingrove, BB&O
 Paul Brian Winson, BB&O

South East Region

Robert Askham, East Anglia
 Shaun Durrant, Sussex
 William John Hellery, London
 Clive Thomas Kingston, Surrey
 Shaun Logan, Essex
 Philip Seabrook, East Anglia
 AW Sharman, Surrey
 Stuart Webster, East Anglia

South West & South Wales

MF Bate, Devon & Cornwall
 Mathew Blake, South Coast
 David Kelly, South Wales
 Samuel Lindsay, South West
 PJ Morgan, South Wales
 Tim Needham, South West

Lee Payne, South Coast
 Robert Phillips, South Coast
 Vivian Simons, South Wales
 ID Wylie, Devon & Cornwall

Northern Ireland

Edward Mckeever, South East

Associate Members

David George Allen, BB&O
 Richard Kinsey, South West
 Conrad Raymond Mielcuszny,
 South Wales
 Philip Salter, South Wales
 B Stephens, South Coast

International Members

David Sinclair Bagg, Germany
 Paul Evans, Germany
 Karl Neville Waddell, Germany

Check out
 September's
 edition for July's
 new members!

BIGGA has a total of 205 international members situated throughout the world in as many as 31 different countries. Each month we will be highlighting one of those countries providing some general and maybe even useful information and introduce our colleagues who are International members.

Spotlight on Sweden - Hej!

Location: Sweden is a country in northern Europe, bounded on the West by Norway, North East by Finland and the Gulf of Bothnia, South East by the Baltic Sea and South West by the Kattegat.



Currency: Swedish krona (SEK)
 Population: (1996 est) 8,819,000

Official languages: Swedish

Time zone: GMT + 1

Capital: Stockholm

Weather: Summer June - September, with warm weather, light balmy evenings and the odd shower. Average temp is 18c
 Autumn October - November, cool and the nights are frosty

Winter December - February, with an abundance of snow, frozen waterways

Spring March - May, warm and the days grow longer

Golf Clubs: There are 134 Golf Clubs listed in the R&A Handbook 1999

Did you know...

- There are more than 20,000 islands off the Stockholm Coast?
- There are some 90,000 lakes?

- Sweden has more leading ladies in James Bond films than any other country in the world?
- Sweden has more cellular phones than any other country? (according to the size of the population)
- Some famous Swedish inventions: zipper, safety match, safety belt, dynamite and cinnamon rolls

Meet the members:

Samuel Af Ugglas, Bedinge
 Fredrik Bahlgren, Mariestads
 Alrik Bernstrom, Abbekas
 Paul Boyle, Chalmers
 Nanne Brodjegard, Nynashamn
 Michael Dohlon, Bisslinge-Svartinge
 Mikael Frisk, Vaxjo
 John Fredrik, Goa Ljunghusen
 Hans Gribbling, Rungsted
 Joakim Gustavsson, Ronneby
 Claes Haglund, Lyckorna
 Per M Hansson, S T Arild

Carl Hernstrom, Ekerum
 Magnus Jiven, Associate Member
 Hans Johansson, Varbergs
 Christer Jonsson, Kristianstads
 Tommy Lindelof, SGA
 Susanne Lindstrom, Partille
 Rolf Loewgren, Bro-Balsta
 Bo-Goran Lundin, Chalmers
 Kjell Mattsson, Falun Borlange
 Kurt Nilsson, Lunds Akademiska
 E K Osten, Varberg
 Simon Jonathan, Pengel Vallentuna
 Stig Persson, Ljunghusen
 Einar Petersen, Falsterbo
 Anna J Softing, Chalmers
 Kim Von Essen, Losgu

Next month: USA

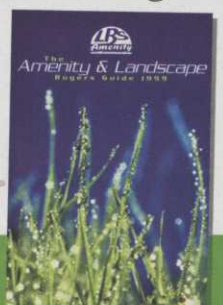
The grass is **always** greener with LBS Amenity

Thousands of quality amenity & landscape products all in one concise catalogue



To reserve your free copy telephone **01282 873342** or fax **01282 869850**

LBS Amenity • Standroyd Mill • Cottontree • Colne • Lancashire • BB8 7BW • www.lbs-group.co.uk • email: sales@lbs-group.co.uk



VERY SPECIAL OFFER!!!

Watermation 2000 will fit **ANY** brand of sprinkler to **ANY** green on **ANY** golf course **ABSOLUTELY FREE!**

All Major Brands Fitted Including:

TORO • RAINBIRD • HUNTER • NELSON

Our own range of G.R. and G.N. SPRINKLERS are also available along with the TW2. controller.



ALSO – Watch out for our ALL-NEW P.C. SYSTEM coming soon at the special introductory price of just £2,999.00 – fully inclusive and installed.

Please call for details...

**Watermation
2000
Ltd**
• IRRIGATION SYSTEMS •

A DIVISION OF



GROUP PLC

FORMULA HOUSE, WEST HADDON, NORTHAMPTON NN6 7AU.
TELEPHONE: 01788 510529 FACSIMILE: 01788 510728 EMAIL: watermation2000@h2ogroup.demon.co.uk

Ad Ref 619

XRT ARRIVES TO CONQUER ALL TERRAINS



THE OFF ROAD, OFF THE BEATEN TRACK,
GO WHERE YOU NEED TO GO VEHICLE.

- 11 HP, 351cc Engine with Pedal Start
- 4-Wheel Brakes
- 6.4" Ground Clearance under Differential
- Independent Front Suspension
- Rear Suspension with Heavy-Duty Stabilizer Bar
- Brush Guard
- Differential Guard
- Aluminium Frame, Chassis and Cargo Bed
- Heavy-Duty All-Terrain or Turf Tyres
- Light Bar, Winch and Many Other Accessories Available

A COMBINATION OF POWER & VERSATILE PERFORMANCE.

Club Car
TRANSPORTATION
& UTILITY VEHICLES



TO UNLOCK THE PRICE...
CALL 01235 537575 Now!



Ad Ref 583