

Supervisory courses: Time for a re-think?



Education Update

BY KEN RICHARDSON

The booking deadline for this year's Supervisory Management Courses is long past and, once again, due to the poor response in some Regions, some courses have had to be cancelled. I have been trying to think why these courses are not more popular and I have come up with the following thoughts:

1. Are all greenkeepers fully qualified to do their current and future jobs and therefore not need training?
2. These course at £50 or £75 for members do not represent value for money.
3. The content of courses is not what is required by greenkeepers.
4. Golf clubs cannot afford to give greenkeepers two days away from work.
5. Insufficient advertising.
6. Courses are at the wrong venues.
7. Courses are run at the wrong time of year.
8. General apathy.

Remember, these courses are run for your benefit and, thanks to the support of contributors to the Education and Development Fund, they are offered at minimum cost eg. £75 covers only the cost of the lecturer's fees per course. Accommodation, food and training facilities are provided by BIGGA. I would be interested to hear from members (or non members) with their ideas why these courses are not more successful.

Places are still available at:

Aldwark Manor Hotel – Monday 24 and Tuesday 25 November 1997: **Golf Course Design, Construction and Establishment**

The Dunkenhall Hotel, Accrington, Wednesday 26 and Thursday 27 November 1997: **Recruitment, Selection and Interviewing**

Hollins Hall Hotel, Bradford, Monday 16, and Tuesday 17 February 1998: **Essential Supervisory Management Skills for Greenkeepers**

Rockingham Forest Hotel, Corby, Northampton – Monday 10 and Tuesday 11 November 1997: **Recruitment, Selection and Interviewing**

West Retford Hotel, Retford – Wednesday 26

and Thursday 27 November 1997: **Golf Course Design, Construction and Establishment**

The Chesford Grange Hotel, Kenilworth – Monday 1 and Tuesday 2 December 1997: **Essential Supervisory Management Skills**

The Blue Boar Hotel, Maldon, Essex – Tuesday 14 and Wednesday 15 October 1997: **Essential Supervisory Management Skills**

Old Ship Hotel, Brighton – Thursday 16 and Friday 17 October 1997: **Leadership, Team Briefings Motivation**

The George Hotel, Crawley, Surrey – Tuesday 21 and Wednesday 22 October 1997: **Recruitment, Selection and Interviewing**

The Cheltenham and Gloucester Moat House Hotel – Thursday 23 and Friday 24 October 1997: **Essential Supervisory Management Skills for Greenkeepers**

The Manor House Hotel, Moretenhampstead – Monday 3 and Tuesday 4 November 1997: **Recruitment, Selection and Interviewing**

Marriott Hotel, Swansea – Wednesday 5 and Thursday 6 November 1997: **Essential Supervisory Management Skills for Greenkeepers**

Finnstown Hotel, Dublin – Tuesday 18 and Wednesday 19 November 1997: **Golf Course Health and Safety Management**

Finnstown Hotel, Dublin – Tuesday 18 and Wednesday 19 November 1997: **Recruitment, Selection and Interviewing**

The Country House Hotel, Ballymena – Thursday 20 and Friday 21 November 1997: **Essential Supervisory Management Skills for Greenkeepers**

Vocational Qualifications

Following publication of several letters in *Greenkeeper International*, it seems that there is still confusion about the the role, implementation and philosophy of Vocational Qualifications.

In simple terms, Vocational means, of or relating to an occupation or employment and Qualification means an accomplishment fitting a person for a position or purpose. In other words, Vocation Qualifications indicate that the holder is qualified to do a particular job. This underlying philosophy ie competence to do a job is the reason for Vocational Qualifications.

There is, however, more to VQs than that basic statement and, together with David Golding, Education Director of the Greenkeepers' Training Committee, I will be exploring VQs in more detail in future editions of this magazine.

GCSAA CONFERENCE AND SHOW, ANAHEIM, CALIFORNIA, FEBRUARY 2-8, 1998



Go Stateside!

GCSAA's 69th International Golf Course Conference and Show will be held in the Anaheim Convention Center. BIGGA will once again host a trip and the BIGGA party will meet at London Heathrow Airport on Sunday, February 1, for departure to Los Angeles at 3pm.

BIGGA will be able to arrange accommodation for any member wishing to stay overnight before the flight at competitive rates.

The Disneyland Hotel has been selected to accommodate our party and offers outstanding facilities. It is located near to the Convention Center and adjacent to Disneyland.

The GCSAA Conference and Show runs from February 2-8 with the trade show taking place from February 6-8. You will be able to attend the conference seminars and education programmes as well as take in the latest golf course equipment, products and services at the trade show.

ITINERARY

Sunday, February 1

All members will assemble at London Heathrow Airport and will take the 3pm Virgin Atlantic flight to Los Angeles with onward transfer to the Disneyland Hotel for an eight night stay on a room only basis inclusive of private facilities.

Monday, February 9

You will be transferred to the airport for your return overnight flight to London, departing Los Angeles at 5.30pm arriving at London

Heathrow at 11.45am on February 10.

PRICES

£845 per person based on a twin share
£ 1270 per person based on single occupancy
Plus comprehensive travel insurance for the duration at £30. Included are:

- Return Economy class flights London Heathrow/Los Angeles
- UK and US taxes
- Transfer to and from the airport to the Disneyland Hotel
- Eight nights accommodation on a room only basis and US accommodation taxes.

Please note: Registration costs for the Pre-Conference seminars which run from February 2-5, the Educational Programmes which run from 5-8 February and the Trade Show are not included in the package and bookings will need to be made directly with the Golf Course Superintendents' Association of America. Details are available from BIGGA upon request.

Please forward full payment of £875 or £1300 (unless travel insurance is not required) to BIGGA, Aldwark Manor, Aldwark, Alne, York, YO6 2NF to arrive no later than Friday, November 28, together with name, address and contact telephone number. If accommodation is required for the night of January 31 please advise in order for the hotel rooms to be booked. Payment will be made on checking out of the hotel. N.B. Places on this trip are limited – book early!

SALTEX

97

REVISITED

The 1997 SALTEX Show will be remembered by those who attended as much for when it was and where it was as what was in it.

Beginning two days after the death of the Diana, Princess of Wales and in a town as Royal as Windsor the talk in the show was as much about the Princess and the circumstances surrounding her death as it was about cutting heights, nitrogen levels and take-over gossip.

Although a degree muted, and with many flags at half mast and the visit of the Sports Minister Tony Banks cancelled, the show could not be rated anything other than a success. It boasted a range of new products from many companies and weather which although less than perfect was a darn sight better than others of recent years.

NEW PRODUCTS

■ **Levington Horticulture** announced a special autumn promotion on the combined turf fungicide and casting worm control product Turfclear (containing carbendazim) at the show.

For a 20 litre purchase of Turfclear – either four x five litre or 25 x 800 ml packs – made by November 30 1997 Levington will supply a free Sony Walkman personal stereo.

The offer comes at a time when weather conditions have been highly conducive to both casting worms and turf diseases.

For further information Tel: 01473 830492

■ News that the **Course Cap** has satisfied all tests and subsequently been awarded the European Safety Standard prEN812 was greeted with applause at the Course Care office in Keighley.

The SATRA Safety testing centre in Kettering approved the Course Cap after more than sev-



eral weeks of rigorous testing. Penetration and impact tests on a large number of caps were preceded by exposure to ultra violet radiation, water and low temperature conditioning. All caps passed in time for the product launch at the Show.



The Course Cap will equip its wearers with baseball cap style head protection, that is both waterproof and breathable.

Based on an original idea by Richard Murray, Course Manager at Sandbach GC, who had identified the need for such a head protector Course Care took time to develop the idea.

As a tribute to Richard's inspiration the deluxe version of the hat – covered in Ventile – is named the Murray. The regular version, the Keeper, is cotton covered.

For further information Tel: 01535 611103.

■ **British Seed Houses** made a number of announcements at the Show including the launch of Aberelf perennial ryegrass, the first in a series of commercial developments resulting from a partnership between seed experts, British Seed Houses and the Institute of Grassland and Environmental Research (IGER). Also launched was a velvet bent called Avalan which trials have shown to have an exceptional shoot density and fineness of leaf and a new variety of UK perennial ryegrass allied to a Poa supina variety – Supra Sport and Supra Shade.

Among the other developments

revealed by David Hides, IGER's Head of Plant Breeding, was the control of chlorophyll ryegrasses with a non senescing gene which ensures that leaf colour is maintained under low nitrogen status, when disease symptoms are prevalent or in other plant stress conditions.

British Seed Houses began funding breeding programmes for non-agricultural markets at Aberystwyth-based IGER in 1987.

Originally established as the Welsh Plant Breeding Station in 1919, IGER already had a strong track record in research and plant breeding and offered an advanced UK-based breeding facility for amenity grass varieties. The first result of the British Seed Houses funded programme came to market within ten years. Completed in only ten years – compared to the usual 12 to 15 for a new variety – the development of Aberelf highlights the research, breeding and marketing



220A



RZI 700



TURF GATOR



1500 AERATOR



3235A



2653A

OUR QUALITY IS ON COURSE

No one can accuse John Deere of standing still. Since 1995, we've added 8 quality machines to our line. Another strong statement about our commitment to your business. New this year are the Turf Gator and 220A Walk-Behind Greens Mower.

The Turf Gator's unique combination of toughness and quietness make it perfect for the golf course. Toughness comes from unibody construction and one-piece forged axles. Quietness comes from a large volume silencer, internal sound absorbing material, and golf-car-style transmission.

The 220A is the latest addition to John Deere's quality line of walk-behind greens mowers. 220A improvements include an isolation-mounted engine for reduced vibration, improved operator-presence safety system, and an easier-filling grass box design.

Add superior parts support and our existing line of quality mowers, tractors, aerators, root zone injectors and utility vehicles and you see why John Deere is the fastest growing golf and turf equipment name in the world. Talk with us soon for a first-hand look.



NOTHING RUNS LIKE A DEERE

John Deere Ltd., Harby Road, Langar, Nottingham NG 13 9HT, Telephone 01949 863299 (answerphone)



C 024 E

AD REF 103

► expertise which the new partnership is bringing to the breeding of varieties for non agricultural markets.

"Our funding of breeding programmes at IGER harnesses our expertise in seed innovation and marketing to IGER's scientific resources. This will open up wider potential uses for new varieties," explained British Seed Houses Director Roger Saunders.

For further information Tel: 0117 982 3691

■ Indicator is the new spray pattern dye from **Amenity Technology**. It is available in either a liquid form or in water soluble packets for easy application. Indicator can be used in conjunction with all spray tank mixes to highlight the area to which the product has been applied, ensuring a correct application of pesticides and all other spray treatments. Indicator can be used on all turf areas, shrubberies and nurseries and unlike any other spray pattern dyes indicator leaves turf a natural green colour with no discoloration.

For further information Tel 0118 951 0033.

■ The Broadsword, **Hayter's** new high output ride-on rotary machine was unveiled for the first time at SALTEX.

The Broadsword has a maximum cutting width of 3 metres (118") with the flexibility of two hydraulically folding outer decks allowing the machine to be used with a single 1.5 metre (60") front mounted deck only.

For easy transport between sites, the Broadsword has been designed with an extremely narrow transport width of 1.5 metres. The powerful automatic 4WD closed loop hydrostatic transmission, with the additional benefit of a hydraulic differential lock, gives excellent stability on steep slopes.

The three fully floating cutting decks have a built-in hydraulic weight transfer system to assist traction and, for maximum utilisation, individually mounted hydraulic motors for each cutting blade. The two outer decks have a built-in "breakaway" system to protect them in the event of accidental contact with immovable objects.

As with all Hayter professional products, easy servicing and



■ **Amazone Ground Care** has entered the zero-turn ride-on sector with the introduction of the Profi Hopper.

A multi-operation machine, the Profi Hopper's flail mechanism allows it to efficiently mow and collect across a wide range of surfaces, from cutting fibrous plants to producing a professional finish on manicured lawns, and be as equally adept working as a scarifier; a one-pass mower/scarifier; a mulcher; or a leaf/litter collector.

Because the Profi Hopper does not rely on vacuum collection, its efficiency in all operations is not impaired by even the wettest conditions.

When operating as a mower/collector, the winged blades, rotating at 3,600rpm, lift and cut the grass – and/or, the material gathered from scarifying and surface trash and leaves – and throw it onto short cross augers running at the rear of the rotor. These move the material inwards to a central auger, which transfers it to the hopper.

Under conditions which require moisture conservation, the Profi Hopper is easily converted into a mulcher by simply moving two spring-loaded, over centre levers to disengage the collecting augers, to allow cut material to fall back to ground.

Operator comfort is provided for by the walk-through platform and a seat adjustable for leg length, rake and ride, which provides a 'bird's eye' view of the cutting head. Additionally, the Profi Hopper's auger collection system appreciably reduces dust – unlike vacuum collectors – and its quiet drive keeps noise levels well below EU requirements.

For further information Tel: 01579 351155.

accessibility are paramount. The Broadsword incorporates the now familiar Hayter hinged operator platform and engine/radiator cover allowing quick and easy access to all parts of the machine.

With its low centre of gravity, compact size and impressive traction system this high output rotary mower offers excellent versatility and performance in all grass cutting applications.

Hayter's professional range of

equipment was "christened" at SALTEX. In a "user friendly" move, the professional models received names to complement the existing combination of letters and numbers.

Taking the names from classic swords, new stylish decals have been created. In addition to the new Hayter Broadsword high output rotary mower, the lightweight triples are now known as Sabres, and the Gang Mowers become

Scimitars. The T44five cylinder mower takes the name of Crusader. Katana is now the fairway mower and the sturdy T224 is the Rapier.

This move has been welcomed and as Kim Macfie states: "We take a great pride in the products we make and the people who make them.

"Just as we wouldn't contemplate calling our staff by numbers we feel it appropriate to call our products by name too."

For further information Tel: 01279 723444.

■ **SISIS** proved itself to have been one of the busiest of all companies on the research and development side of the business with the launch of a host of new products: the Rolaspred, the Powacart, the Autocore, the Ferret, the Maxislit, the Tilth N' Seed, the 21-1D Tractor, the Ecospray and 5mm Needle Tines.

Among these the 21-1D tractor (pictured below) has been specially designed for turf maintenance operations on golf courses, sports grounds and sand filled synthetic surfaces. It is a 21 horsepower diesel powered machine with a patented weight transfer system, rear three point lift, articulated power steering and hydrostatic drive to the front wheels in forward and reverse. A range of Sisis implements can also be used with the 21-1D.



The Tilth N'Seed is an economical seeder for all outfield turf and fairways. A range of seeding rates can be used – from as low as 0.1 oz/sq yd – for maximum seed economy. The rakes create a good tilth followed by the seeding unit which has capacity hopper. The rear roller firms the surface to give an improved presentation after seeding.

The Ecospray has been designed to minimise "drift" and can therefore be used in adverse weather conditions. It can be towed or fully mounted behind the Sisis 321, trucksters or pick-ups.

Each of the floating units has a

mesh shroud which is scientifically designed to allow the correct amount of air flow to reduce drift to a minimum while maintaining droplet size.

The Needle Tines were developed from an idea by John Coleman, Course Manager at Abbeydale GC, near Sheffield. The advantage of the 5mm needle tines is that thousands of fine holes are made at a constant depth of up to 127 mm. These allow the roots to go down deep, yet surface disturbance is negligible.

For further information Tel: 01625 503030.



■ The new Hydro 124D, pictured above, is the first mower from the **Etesia** stable to combine rear-ejection, integrated collection and high-lift emptying – the New World Cutting and Collecting System. This is only a part of this exciting introduction from one of Europe's most innovative manufacturers. In designing the Hydro 124D's new system Etesia have drawn on the experience gained from their already successful Hydro 100 and extensive trials carried out over the last five years.

Emptying the grass collector is an important feature of modern mowers and here Etesia have used hydraulics and a parallelogram principle to easily lift their 600 litre capacity grass box to any height from ground level to a maximum of 1.9 metres. As part of the design the entire cutting system is cleared of clippings every time the box is emptied.

The driving position is forward of the engine and above the mower so in addition to all-round visibility, engine noise and exhaust fumes are well out of the way. All the controls are within easy reach.

Optional extras include: three point linkage; RTS lighting and safety cab.

For further information Tel: 01926 403319.

■ Aeration equipment specialist, **Multi-Core**, has added a 2m wide model to its range of tractor-mounted aerators.

Developed to enable greenkeepers, groundstaff and contractors to carry out fast, effective aeration of large, open turf areas the British-built MC20 aerator complements the existing 1m and 1.5m wide machines in the Multi-Core range. All three aerators can be equipped with a choice of solid, coring, slicing, or chisel tines to suit specific turf needs and seasonal aeration requirements. Aeration pattern is variable depending on the specific tine head and forward speed selected.

The MC 20 is able to aerate from the surface down to a maximum 125mm deep, quickly and easily adjusted without tools, on a large diameter full width front roller. Indicator markings on the machine assist with accurate depth setting.

For further information Tel: 01937 843281.

■ **Toro** introduced the Grounds Pro 2000, a ride-on triple mower which can also be fitted with an extensive range of attachments to carry out a variety of different jobs using only the one power unit.

It means that budget-conscious users working in the sports, amenities and landscape sectors, who previously compromised on grass-cutting quality because they found it uneconomical to invest in a mower for fine-finish turf, can now do just that as the Grounds Pro 2000 can turn its hand to a host of other work too.

The list of attachments currently available consists of a sprayer, fertiliser spreader, rotary broom, debris blower, snow blade and hydraulic tipping dump cart. An over seeder and white line marker are in the pipeline. Other attachments will follow later.

Toro worldwide marketing manager for commercial products, Barry Beckett, said: "Our aim was to develop an economically-priced utility product that optimises quality of grass cutting – hence the triplex reel units – and versatility, which is achieved through the use of an extensive range of attachments.

"This machine will provide a new set of customers with a Toro machine that has all the benefits

they are looking for in terms of quality and versatility at an affordable price."

The unit is available either with a three or four-wheel axle layout providing one or two rear-wheel steering. It is fitted with hydrostatic transmission and has a forward speed range from 0mph to 8.5mph, 0mph to 3mph in reverse.

In its standard guise, the Grounds Pro 2000 comes as a triple mower which can be fitted with either fixed head five-bladed reels or floating head five and eight-bladed reels.

To convert the mower for other operations, Toro engineers have designed their own special A-frame mounting system that allows for quick demount and plug-in of the various attachments. This includes the two front-mounted cutting units, while the rear cutting unit remains in position at all times. All the attachments are front mounted.

Toro has improved its popular Sand Pro range of bunker vehicles with the announcement at SALTEX '97 of the new three-wheel drive Sand Pro 3020. The model incorporates major improvements over its predecessor in the stable (the 3000 model), drawn from the top-of-the-range Sand Pro 5000.

The new model is also provided with a PTO capability, similar to the 5000, which was the industry's first bunker machine with this feature, so that operators will be able to use power-driven attachments when they become available in the future.

Toro's answer to the problem of achieving an even cut without scalping on undulating ground is the Contour 82 Deck, a rotary mowing unit.

"Our deck design lets the cutting chambers articulate significantly in two different planes," says Barry Beckett, Toro worldwide marketing manager for commercial products. "This allows the deck to mow areas with undulations that current belt driven rotary mowers simply can't handle.

"Now, an operator can mow with a rotary even in heavily-contoured areas such as around golf course bunkers and greens, not just roughs."

For further information: Tel 01202 295533.

■ **Bailey's of Norfolk** introduced a new range of dressings. Olympian Prescription Dressings have been developed to help greenkeepers plan an integrated maintenance strategy building around their topdressing programme.

An active granulated component is combined with a dressing during the manufacturing process so the control of fungal disease, thatch build up or nutrient deficiency can be incorporated into the top dressing schedule, thereby building a multi-functional dressing programme.

The range includes Olympian Sea-nymph, a seaweed enhanced dressing containing a balance of macro nutrients and a range of trace elements making it an effective treatment for suspected mineral deficiency. Olympian Thatch Eater is a dressing containing a living microbial component selected for its ability to breakdown thatch while simultaneously releasing locked up nutrients. Olympian Inhibitor provides protection against disease by stimulating the turf's natural defences to harmful fungus such as fusarium.

As a BIGGA Golden Key member, Bailey's is striving to set new standards within the turfsetting industry and an "open house" policy allowing greenkeepers the freedom to visit the production and laboratory facilities has helped in the development of the Olympian range.

For further information Tel: 01603 754607.

■ **Ransomes'** new ride-on AR 250 articulating rotary mower has five fully-floating cutter decks engineered to deliver an even, consistent finish across level and undulating terrain.

Designed for high output mowing of golf course rough and semi-rough, driving ranges and general sports and amenity grass, the AR 250's five steerable cutting decks give an overall mowing width of 2.5m (98in) and fold to 2.1m (84in) for transport.

Each deck features Ransomes' twin blade Envirodeck cutting system. The lower blade cuts the grass which is then immediately mulched by the upper blade and blown down into the sward.

Saltex '97 also marked the first public appearance of the all-new range of Ransomes' tractors. ➔

RAIN BIRD® GOLF IRRIGATION

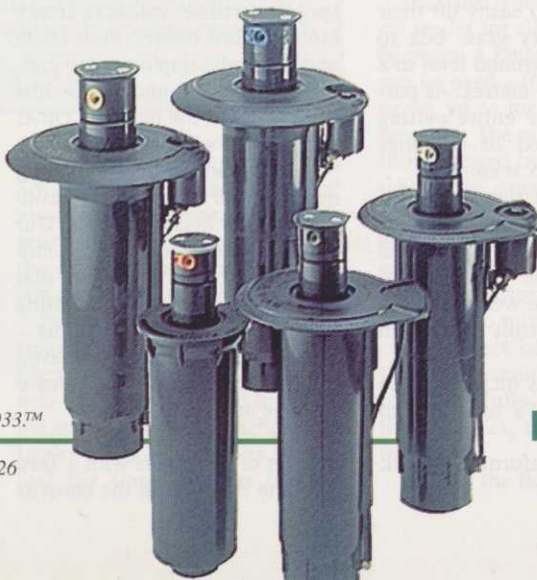


Rain Bird irrigation products conserve water resources for a greener future

*Reliable products
and technical service
all over the world.*



*Central control systems
Impact and
gear-drive rotors
Valves*



RAIN BIRD®

Conserving Nature's Resources Since 1933™

Rain Bird U.K. office: Tel. 01273 891 326



► Styled and finished in Ransomes' corporate livery, the line-up encompasses six compact tractor models with power outputs from 18hp to 45hp and a 16hp commercial mower with 48in (1.22m) mid-mounted rotary deck.

All of the compact tractors are equipped with four-wheel drive and power steering and come with either hydrostatic or mechanical transmission, depending on the model specified. The two largest tractors in the range have, as standard, shuttle and creep speed transmission systems, the latter being required for the operation of specialist aeration and drainage equipment.

Being featured at Saltex on the top-of-the-range 45hp CI445 tractor is the first of Ransomes' new ROPS 'Q' cabs which will be available as a standard fitting both on

this model and on the 38hp CI435 tractor. The remaining four Ransomes' tractor models have a folding ROPS frame as standard. Ransomes plan to offer cabs for all its tractors, including the CG161 commercial mower.

Designed to complement Ransomes' range of grass and turf care machinery, the new tractors will be embarking on an extensive demonstration programme after the show, responding to requests from greenkeepers, groundstaff, contractors and other grounds maintenance professionals made direct to Ransomes and through the company's nationwide dealer network.

Also launched was a commercial-duty zero turn radius rotary mower with brush grass collection system. Known as the ZT323, the 1.2m (4ft) mower is the first of its type to be developed and

manufactured at Ransomes' Ipswich headquarters. The all-new machine incorporates a number of features with close attention being directed at operator comfort, tractive ability, grass capacity and noise levels.

The ZT323 has a four-wheeled rigid chassis with the driving wheels at the rear. This layout provides positive traction and good climbing ability under all turf conditions. The use of hydraulic drive to the rear wheels also produces excellent underbelly clearance while eliminating the expensive mechanical drive systems used on a number of other zero turn radius rotary mowers.

For further information Tel: 01473 270000.

► **Miracle Professional** launched two 'Longlife' turf fertilisers with modified formulations to replace the existing

products on the range.

'Longlife' Cleanrun 2 is a mini-granular weed and feed fertiliser for use on outfields and fairways. The 9 7 7 analysis is complemented by a triple herbicide mixture of dicamba, dichlorprop and MCPA. The application rate is 50g per sq.m and the product has a recommended user price of £9-90 per 25kg bag.

'Longlife' Renovator is a mini-granular, triple action fertiliser for use in amenity turf situations with an 8 3 3 analysis. It also contains the herbicides dicamba, dichlorprop and MCPA and 6% Iron for the control of moss. The application rate is 50g per sq.m with a recommended user price of £16-99 per 25kg bag.

For free leaflets on these products call the Miracle Professional Technical Advice Centre on (0870) 603 9146.



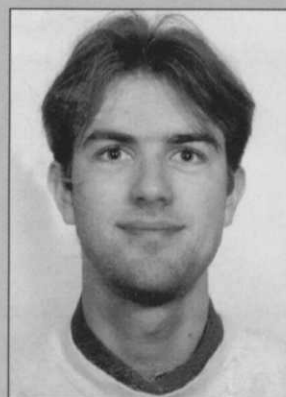
The Ransomes 45hp CT445, top and the Ransomes ZT323

ASSISTANT GREENKEEPER

Profile

Usually the spotlight falls on the Course Manager or Head Greenkeeper at a Club. Now it is the turn of those whose work often goes unheralded to star...

Name: **David Gillon**
Age: **19**
Club: **Tulliallan GC**
Position: **Assistant**



1. How long have you been a greenkeeper?

Three and a half years.

2. What education are you currently undertaking?

None at present but qualified to SVQ I, II and III.

3. Which one task do you most enjoy doing?

Cutting greens using a pedestrian mower.

4. Which one task do you most dislike doing?

Cleaning and lifting grass clipping piles in winter.

5. What job other than greenkeeping might you have ended up doing?

Sports Coaching

6. Who has been the biggest influence on your career?

My Head Greenkeeper, Elliott Small.

7. What would you do to improve the life of a greenkeeper?

All committee members should attend AGM and work a week on the golf course.

8. What are your hobbies?

Football, golf and music

9. What do you get out of BIGGA?

Magazine and outings.

10. What do you hope to be doing in 10 years time?

Golf Course Manager or golf course architect.



■ The DR Powerwagon, pictured, is a revolutionary walk-behind powered wheelbarrow from Charterhouse designed specifically for moving heavy, bulky loads with a minimum of strain and effort. The weight of the load is balanced over big, power-driven wheels for maximum traction and manoeuvrability. The operator steers and controls ground speed using a brake and clutch from the rear-mounted handlebars. It is especially suited for use on slop-

ing, rough terrain, and soft ground where it is difficult to move heavy loads with unpowered wheelbarrows, wagons or carts, and in areas where the use of ride-on equipment, including a pick-up truck would be difficult or impossible.

Able to haul-up to 800 pounds the Powerwagon features a multi-speed transaxle, power-reverse and a dump bed.

Four models are available including manual and electric-starting wagons including all terrain tyres, and moulded polyethylene or a wooden stake-side bed.

Charterhouse also announced that they had been appointed distributor for Desert Extrusion products throughout the UK as well as distributor to Redbreast Industrial Equipment for the Fuji Robin Dagger soil ameliorator.

For further contact: Tel: 01428 661222 or Fax: 01428 661218.

■ The Warren Golf Club, Woodham Walter, Essex is this year's



winner of the annual Blazon 'Spray Watch' campaign, receiving the first prize of a brand new Hardi AMK 400 Tractor Mounted Sprayer equipped with state of the art, electric 'operate-from-the-cab' controls

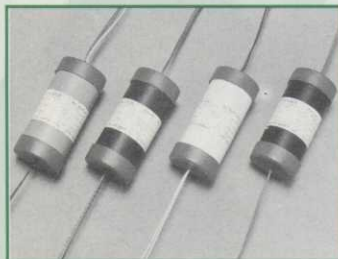
The presentation to the winning club's Head Greenkeeper Peter Hurrell, was made on the Farmura stand by BIGGA Executive Director, Neil Thomas, pictured above.

Also in attendance at the short ceremony were Club owners John

and Mark Durham, together with the entire greenkeeping team from the Warren who were brought to the exhibition in a coach especially hired for the occasion.

Ten runner-up prizes of a Cooper Pegler Series 2000 knapsack sprayer were won by the following clubs: Royal Troon, Bridlington, Sherwood Forest, Naunton Downs, Stoke Poges, Durham Park, Walton Heath, Bristol & Clifton, Royal St. Georges', John O'Gaunt.

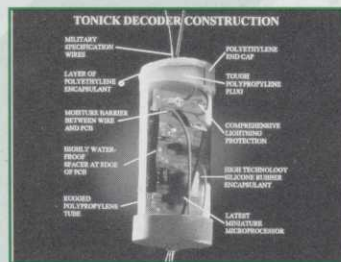
ALTERNATIVE DECODERS BY



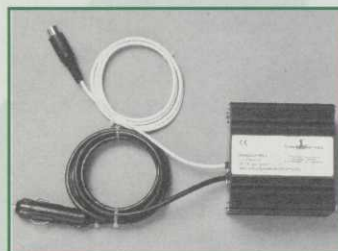
Tonick Watering

Guaranteed Compatibility & 5 Year Warranty

- Long Life – designed to last for at least 10 years
- Competitive equivalents to **Watermation, CIC, Wright Rain, Primetime, Robydome, Robydome Mk III and TORO**
- Guaranteed to work perfectly with your controller
- Stocked and fitted by nearly all independent irrigation installers
- Most makes of controllers serviced and repaired by Tonick
- Simple, rapid testing and address settings with our low-cost programmer
 - Tests your existing decoders as well.



Shake off those chains! despite what controller manufacturers say, you are no longer tied to your original decoders. Specify Tonick and put an end to irritating and expensive decoder failures.



TONICK decoders will work with all leading controllers – and the range is growing continuously. All types are available with 1,2,3 or 4 independent solenoid outputs.

The unique low-cost TONICK programmer allows quick simple address setting, tests new and original decoders. The car battery adaptor allows use of the programmer on site – no need to take decoders back to base for testing or address re-setting. Saves time and money.



2, Prince William Close - Worthing - West Sussex - BN14 0AZ Tel: **01903 262393** - Fax: **01903 694500**

Hardi makes every drop count

Selecting the best spray chemicals for your turf is one thing, applying them with the required accuracy is another.

That's why at Hardi we don't measure the performances of our spraying equipment solely in terms of tank capacity, nozzle output and bar pressure. We measure it in your terms.

Uniform coverage, speed of application and effective results.



AM-PS Eagle
High specification sprayer. Tank sizes 300/600/800 litres. Fitting kits available for all turf utility vehicles.

For example, we know that your individual requirements, in terms of chemical choice, climate, terrain and turf condition, are unique.

AM-TR-2 600/800 Trailer Sprayer
High capacity spraying with large volume tanks and wide booms. Complete with PTO drive.



That's why Hardi offer a complete range of amenity sprayers to suit all situations with tank sizes from 100 - 1500 litres.

When it's the end result that counts you can always rely on us... no matter what the pressures.



We've got it covered

For more details or the name of your nearest Hardi distributor call

01455 233811



COUNTING



Jeff Bailey



Steven Nixon



Alan Owen



Andrew Baker



David Ansell



Neil Robson



Christopher Rawlings



Daniel Crowley

The Student of the Year Finalists are:

Jeff Bailey

Jeff is a much travelled man, having spent 13 years in the Army, before leaving to start a career in greenkeeping. Jeff now works as an assistant greenkeeper at the Royal Burgess Golfing Society in Edinburgh. He completed the first year of his SVQ Level II at Oatridge College, winning a nomination for the BIGGA First Year Prize and he will complete Level II in 1998. Jeff, his wife and three sons live in Ratho Station, Midlothian.

Steven Nixon

Steven is an assistant greenkeeper at Wortley Golf Club, where his Head Greenkeeper, until his recent retirement, was past BIGGA Chairman, Barry Heaney. Steven has been a greenkeeper for three and a half years following time served as an apprentice motor vehicle mechanic, where he not only achieved his City and Guilds in Motor Mechanics but was also voted MAA Mechanic of the Year and appeared in a career video. Steven joined Wortley in 1994 as a greenkeeper/mechanic and he has recently completed his NVQ Level II at Askham Bryan College.

Alan Owen

Alan has been involved in landscaping and gardening for some time, working for a landscaping company and in a local garden

The winner of this competition will be awarded the TORO Scholarship, which includes a six weeks residential study course at the University of Massachusetts and visits to the TORO factories in Minneapolis and California. If time permits, the winner will join the two runners-up and his college lecturer at the GCSAA Conference and show in Anaheim California. All expenses will be paid by TORO.

centre. He joined Royal Birkdale as an apprentice in 1995, where he has gained a wide range of experience, preparing the Course for the 1998 Open Championship and contributing to the ecological management of the Course. Alan has recently completed his NVQ Level II, at Myerscough College, where he was voted Class Student of the Year in 1996. Being awarded his Gold Duke of Edinburgh's Award at Buckingham Palace was a day that Alan will never forget.

Andrew Baker

Andrew has been a greenkeeper for over four years and he has just moved to his second club, Gog Magog, from Bar Hill Golf Club. Andrew is a keen sportsman, playing hockey for Cam-

bridge City, golf and rugby. Andrew has completed his NVQ Level II at Cambridgeshire College, where he won the Barenbrug Prize for the Best Student on his course. He hopes to start NVQ Level III this year when he feels that his Business Studies A Level will help his understanding of the Supervisory aspects. Another finalist with travel in mind, Andrew would like to return to Australia and perhaps work on a golf course.

David Ansell

David is a very experienced greenkeeper, having been Course Manager at The Dyke Golf Club for four years. No stranger to BIGGA events, David spoke at Harrogate during the 1997 Seminar Programme and he is through to the final stages of the BIGGA Golf Course Environment Competition. Although very experienced, David has recently completed his Level II NVQ, hence his nomination by Plumpton College for this competition.

Neil Robson

Neil has worked as an assistant greenkeeper for three years at Harpenden Golf Club and he gained more experience from working at Dunstable Downs Golf Club during his summer holidays from school. Neil is a keen golfer, playing off 4 and he also plays football, is a boxer and martial arts expert. He has recently completed a "fast track" NVQ Level II Course at Oaklands College, where he

hopes to return, in September for an NVQ Level III Course.

Christopher Rawlings

After starting life as an apprentice in an aerospace factory, Christopher moved into greenkeeping five years ago. He is a keen rugby player, coaching and playing at a number of levels. Chris has a great deal of experience of golf course construction and tree planting, although he wishes that he had been given more say in the construction of his present course, Rodway Hill, now that he is head greenkeeper. Chris gained his Level II NVQ at Hartpury College and he has almost completed Level III. Keen to learn through study and from experience, Christopher would like to continue his studies to gain a degree in Landuse and would like to work in Europe and the United States.

Daniel Crowley

The youngest of our finalists, Daniel is the Head Greenkeeper of a new 18 Hole Course at Blarney Golf Club, which is nearing completion. He also has experience of working at Muskerry and Fota Island Golf Clubs. Daniel followed a course in Amenity Horticulture with a National Vocational Certificate Course in Greenkeeping at Colaiste Stiofain in Cork and attended the complete Learning Experience Week at Harrogate in 1997. In his search for more knowledge and experience, Daniel would like to work abroad.