

**Michael Bird delves into the world of top dressing machinery – and finds it can be quite a minefield.**

# TOP DRESSERS

**D**on't be rushed into buying a new top dresser by a highly attractive "never to be repeated" price or special "once only" trade-in offer. Take your time, examine all the options and always test the short-listed machines with the most commonly applied materials on your course.

Wise words of advice from Steve Isaac of the Sports Turf Research Institute, who admits that selecting the most suitable top dresser for a full range of possible golf course applications "has become a bit of a minefield".

"Most modern machines are able to handle most standard top dressings without problem," he commented. "However, uneven flow and erratic application can occur when applying bulky or very fine materials and when texture and moisture content are of variable consistency, particularly when on the damper side.

"Machine weight, its capacity and the method of drive need careful consideration to best satisfy the top dressing requirements of different turf surfaces," said Mr Isaac. "A machine suitable for dressing a green can be totally inappropriate for work on a fairway, and vice versa. It is no easy job selecting the best machine to carry out the widest range of tasks."

Mr Isaac pointed out that there are few top dressers on the market able to consistently and evenly apply wet materials. "In any case, if dressings are too wet it will be difficult to work them in to the turf," he said. "Too dry, and blowing can reduce evenness of spread. The aim should be a material of an even consistency, both in particle size and moisture content."

Important points to consider when considering different top



# TO IMPRESS US

dressers include capacity, weight, working width and the power unit to be used. The above factors will determine workrate, the range of surfaces across which the machine can be used safely and the back-up resources needed to keep the top dresser supplied and filled with fresh material.

"At the end of the day, the aim must be to apply dressings evenly, accurately and at the best possible workrate," stressed Mr Isaac. "However, all this must be achieved without damaging the playing surface."

With all these points in mind, one machine type which has shown considerable expansion in recent years is the self-propelled, pedestrian-controlled top dresser.

The machine's compact dimensions make for convenient operation and loading while its size and single wheel steering give greater manoeuvrability and lower weight than a trailed, a tractor-mounted or a truck-mounted combination. This makes it ideal for work on difficult access or awkward shaped greens and soft or tender turf, especially following verti-draining or hollow coring.

Because the machine's dimensions limit the amount of material it can carry, the self-propelled machine is considered best suited for use on smaller areas

such as nine hole, par three or pitch and putt courses where resources or assistance may be limited.

However, where back-up is

available by way of supply trailers and help with reloading, the pedestrian machine is able to maintain a reasonable workrate on larger areas without undue



**Above: Turfco Mete-R-Matic self propelled top dresser from Turf Machinery Ltd has a patented chevron belt conveyor for precise application of dry and damp materials at varying rates. Top: Able to carry up to 500kg of material, the Ultra Plant UP30 top dresser has a serrated roller and brush feed mechanism.**

**RED VALIANT**

**This machine can apply up to 500 tonnes per day of sand and top dressing material from 5mm to 100mm in depth.**



## SPECIFICATIONS

Capacity 6 tonnes	Unladen weight 1300kg
Spreading width 2m 30cm	Max. gross weight 7500kg
Transport width 2m 50cm	P.T.O. 15 h.p.
Height 1m 70cm	Tyres 12.5/80 x 15.3 14 ply
Length 3m	Minimum tractor requirement 45 h.p.

4 tonne and 2 tonne versions are also available for use with the smaller compact tractors.

**FOR SALE OR HIRE**



**(0734) 795454**

**E & S SPORTS GROUND CONTRACTORS**

THE FAIRWAYS, KING STREET LANE, WINNERSH, WOKINGHAM, BERKSHIRE RG11 5AX

AD  
REF  
248

fears over turf damage, especially on newly laid or freshly aerated greens and tees.

Furthermore, its ability to be moved easily by trailer from site to site makes it ideal for contract teams needing to top dress quickly a number of fine turf surfaces of limited area without the extra weight or cost of an additional power unit.

For these reasons, the self-propelled machine is also appearing within a growing number of hire fleets.

Until quite recently, the number of purpose-built self-propelled machines available was limited to just one make, the Turfco Mete-R-Matic from North America, distributed in the UK by Woking-based firm, Turf Machinery Ltd.

Featuring endless belt and brush delivery, a new model – the F15B – has been introduced for 1994 fitted with forward and reverse gears and the chevron patterned belt used on the company's current trailed and truck-mounted models.

Said to ensure very fine application even with moist materials, the zig-zag pattern belt moves dressings positively from the 11.5 cu ft (325 litre) tapered hopper through an adjustable metering gate onto a high speed rear rotating brush. Here, material is picked up and propelled downwards into the turf.

All-mechanical drive to the F15B's wheels and 32in (81cm) wide spreading mechanism is provided by a 5.5hp Honda petrol engine with all controls now mounted on the machine's steering handle. Reverse drive is fitted as are brakes for safer operation on slopes.

Weighing 520lb (236kg), the Turfco F15B runs on five wide turf tyres (four driven, one steered) and costs a little over £4,800, including a three year warranty. It is available also through Turf Machinery's extensive hire fleet and contract maintenance services.



**Turfmech Machinery's SAB 125A uses a patented rotating cage distributor at the rear to ensure even application without lumps**

Over the past two years, the number of self-propelled top dressers on the market has mushroomed with the introduction of four new machines from Turfmech Machinery, Sisis, Blec and Ultra Plant.

All feature powered downward discharge of top dressings, essential to ensure that material reaches the base of the turf. However, the method of material delivery and distribution differs on all four machines.

The Sisis Autospred has a vibrating plate at the base of its 9 cu ft (255 litre) hopper from where top dressings are shaken, via an adjustable gate, to the rear delivery brush.

Drive to the machine's two wheels is hydrostatic, powered by belt from a 5hp petrol engine and providing infinitely variable forward and reverse travel up to 4mph. Mechanical drive, controlled by levers on the steering handle, is used for the vibrating plate and rotating brush.

Weighing 588lb (254kg), the Sisis Autospred has a spread width of 33in (83cm) enabling it to treat a 500sq yd (418sq metre) green in about 15 minutes. Price is £2,975.

A self-propelled top dresser with a difference is marketed by Blec. Power is provided by a standard two-wheel 5.5hp tractor (Honda F660 tiller or similar) which tows the top dresser assembly over the turf at speeds of up to

6mph. Slewing clutches are used for steering at low speeds and when working in confined areas.

The PTD42 top dresser has a spread width of 42in (1.07m), a belt and brush delivery system and both the spreader and its towing power unit run on four flotation tyres. These are said to have sufficient tread to provide traction, but not damage the turf on tight turns.

A folding rear foot plate at the rear of the top dresser enables the operator to ride on or walk behind as required. Drive to the machine's ribbed conveyor belt at the base of the 6.5 cu ft (184 litre) hopper is via twin vee belts from the top dresser's wheels. This has the effect of altering feed rate in line with forward speed.

The nylon delivery brush is direct driven by meshed gears from either the front or rear shaft of the conveyor belt. Blec says it can build the machine to provide front or rear discharge according to user preference.

Weighing 492lb (223kg) empty, the Blec PTD42 top dresser can be equipped with extension hopper sides adding an extra 2 cu ft (56 litres capacity). Price of the machine complete with Honda F660 tractor power unit, extension sides and rear drag brush is £4,035.

Turfmech Machinery's SAB 125A self-propelled top dresser uses a patented rotating cage roller instead of a brush for even

and controlled feed of materials from the endless conveyor belt to the turf.

The open cage roller is said to be better able to handle damp and sticky top dressings while also breaking down any lumps. An important feature is the machine's low spread height of just 12in (30cm) above the ground, minimising risk of wind interference.

Drive to the wheels and spreading mechanism is all-mechanical, powered by a 5.5hp Honda engine. A five forward, single reverse speed gearbox provides a good range of working and transport speeds while enabling the machine to be reversed into corners and areas where banking around greens prevents straightforward access.

Mounted on three flotation tyres (two driven, one steered), the Turfmech SAB 125A weighs 770lb (350kg) and has a capacity of 11.3 cu ft (320 litres). All controls are handlebar mounted. Price of the machine is £5,647.

Manufactured by Ultra Plant in Co Tyrone, Northern Ireland, the UP 30 pedestrian top dresser has a serrated drum and brush delivery and distribution system at the base of its tapered 9 cu ft (255 litre) hopper. Rubber seals are fitted to prevent leakage of finer top dressings.

Claimed to be simpler, easier to maintain and better able to handle a wider range of materials than a conveyor belt, the rotating drum feeds dressings via an adjustable gate onto the nylon brush. Both the drum and brush are chain driven while the wheels are powered by belt and gearbox from a 5.5hp Honda engine.

Although forward drive only can be selected, the makers say that the machine's swivelling steering wheel produces a 6ft (1.8m) turning circle for access to awkward corners. Maximum working speed is around 3.5mph and spread width is 36in (91cm). Price of the Ultra Plant UP30 is £3,700.

F  
E  
N  
  
T  
U  
R  
F  
  
D  
R  
E  
S  
S  
I  
N  
G  
S



## FEN TURF DRESSINGS LTD

ANGEL COURT, DAIRY YARD, HIGH STREET,  
MARKET HARBOROUGH  
LEICESTERSHIRE LE 16 7NL

Telephone:  
0858 464346/433003  
Fax: 0858 434734

## FENDRESS™ TURF TOP DRESSING BRITAIN'S NO. 1 YOU CAN'T BEAT THE ORIGINAL

### NOW AVAILABLE:

- Fendress Regular
- Fendress Superfine
- Economy Top Dressing – for Tees and Approaches
- Sand/Loam Top Dressing
- Rootzone Mixes
- Highest quality Screened East Anglian Fensoil

- Fine Screened Sedge Peat for Fairways
- Fine Screened Sandy Loam
- Kiln dried Sand and Washed Grit for Vertidrainage
- Lime-free Silica Sands
- Bunker Sands – White – Cream – Pink or Yellow, including Moneystone

**Bulk deliveries nationwide ● Please phone for quotation  
● Special discounts for large quantities**

AD L  
REF T  
168 D

YOUR ASSURANCE OF QUALITY AND SERVICE FROM THE PEOPLE WHO CARE

## TURF MACHINERY LTD

Telephone: 0483 764467 Fax: 0483 767928

### THE SERVICE PROFESSIONALS USE

*Are you responsible for the maintenance of bowling greens, tennis courts, golf greens or cricket squares? Then you need to talk with the specialists.*

#### • AERATION •

We offer hollow or solid tining using the Ryan Greensaire and GA30, the Verti-drain and the Coremaster.

#### • TOP DRESSING •

Materials spread with the renowned Turfco Mete-R-Matic top dresser, available in self-propelled or trailed versions.

#### • HIRE •

We have available an extensive range of professional turf and grass maintenance machinery, with or without operator.

#### • SALES •

Turf Machinery Ltd is the UK distributor for Turfco turfcutters, top dressers and powered edgers. Reconditioned machines often available.

#### • SPARE PARTS •

More than 6,000 quality parts to fit most American-built machines including Toro \* Cushman \* Jacobsen \* Brouwer \* Ryan \* Coremaster \* National \* Ransomes \* plus many others.  
Catalogues mailed on request.

**STOP PRESS \* STOP PRESS \* STOP PRESS**

We now undertake overseeding and fairway/sportsfield verti-cutting

AD  
REF  
101



**UFB**  
**HUMBERCLYDE**  
FAIRWAY FINANCE

## Foremost In Finance

*The first operation of it's kind in the U.K. to be totally dedicated to machinery and equipment finance for the golf industry, Fairway Finance provides a bespoke range of financial products and services including:*

- Hire Purchase & Lease Finance
- Fixed Rate Funding
- Tailored Repayment Schedules
- Credit Account Facility
- Club Reserve Account Facility

**For Unbeatable Quotations  
Call The Specialists On:**

**GolfLine**

**0256 744151**

Finance is for business purposes only in the UK and is subject to status.  
Written quotations are available on request from the address below:  
UFB Humberclyde, United House, Bartley Way, Hook,  
Basingstoke, RG27 9UF

AD  
REF  
466

**American technology  
for efficient turf maintenance**

**DALTON  
COOPER**

**DEEP DRILL AERATOR** with simultaneous **BACK FILL SYSTEM**. Eliminates these water puddles and develop strong and healthier turf.



Unique machine is self-propelled and operated by one man. It makes 24 holes at the time up to 8" (20cm) depth and automatically fills these holes before repeating the operation.

Used in Europe for low cost renovation of Football fields and Golf Courses.

#### EUROPEAN SALES DIVISION:

**DALTON COOPER**  
215 No. Main St.  
Freeport, NY 11520  
USA

Tel: 516-378-2190  
Fax: 516-378-3366

AD  
REF  
268

G

## GOLF COURSE EQUIPMENT

**★ NEW PREMIER ★  
HOLE CUTTER  
£95.00**

14" Heavy Duty Blades  
with Solid Steel Inserts  
One Piece Turning Shaft  
Ideal for Compact Subsoil

★★★

Now available

## UNIVERSAL SWIVEL TUBE FLAGPINS

Available in 6ft, 8ft, 10ft, 12ft

12" PVC Swivel Tube suspended on  
Nylon bearings with a quick release  
Acorn shaped cap.

This Swivel concept will adapt  
to any universal manufactured  
1/2" diameter flagpin

**NOW IN STOCK - WINTER HOLE CUPS**

**H. PATTISSON & CO LTD,  
342 SELBOURNE ROAD, LUTON,  
BEDS LU4 8NU  
TEL: 0582 597262 FAX: 0582 505241**

USING OUR EXTENSIVE  
EXPERIENCE  
TO SUPPLY  
THE GOLFING INDUSTRY  
WITH QUALITY  
PRODUCTS FOR:  
THE TEE  
THE FAIRWAY  
THE GREEN  
THE CLUBHOUSE  
THE GREENKEEPER  
THE DRIVING RANGE  
THE PUTTING GREEN  
TURF MAINTENANCE  
EUROPEAN SPECS

SEE US  
ON STAND  
T17-20 AT  
SALTEX

AD  
REF  
35

# Buyers' Guide

The most cost-effective way of reaching readers of Greenkeeper International. Simply ring Bill Lynch on 091 413 7218, Carol Dutton or Louise Lunn on 0347 838581 and ask about an alphabetical category listing: the cost starts from the equivalent of under £25 per month.

## Aerators

### AERATORS

Problems with dirty water or algae bloom? Let Otterbine clean-up your lakes and ponds.

The world leader in water quality management.

Available from leading irrigation companies. Full details from:

### S.G.I. Sales

6 Stuart Road, <sup>ES9</sup>  
Market Harborough LE16 9PQ  
Tel: 0858 463153 ♦ Fax: 0858 410085

## Agronomy

### PSD AGRONOMY LTD

A COMPLETE AGRONOMIC CONSULTANCY SERVICE FOR THE GOLF CLUB and GREENKEEPER

- Contract Management of Extensions and New Courses
- Site Management and Problem Diagnosis on Existing Courses
- Technical Advice and Support all year round
- Soil and Turf Analysis



For further information contact:  
David Stansfield or John Hacker  
42 Garstang Road, Preston PR1 1NA  
Tel: (0772) 884450 Fax: 884445

## All Weather Walkways

### ALL WEATHER WALKWAYS

Limit turf damage with a natural woodfibre walkway.

- Free draining
- Soft and quiet tread
- Engineered particle size
- Blends into the landscape
- Expert construction advice

### Dormit

For further information please call us on Cirencester (0285) 860781/2

## Animal Repellents

### AIRWAYS

DISCREET CONTROL

CONSULTANCY ENVIRONMENTAL SERVICE & TRAINING

Rabbits & Moles...  
Our problem!

SPRINGER HOUSE • WINDMILL LANE  
KEMBLE • CIRENCESTER GLOS • GL7 6AN

TEL: 0285 770919  
FAX: 0285 770910

## SCUTTLE® ANIMAL REPELLENT

Up to ten weeks protection from browsing by rabbits from a single, effective spray application.

For product leaflet and the name of your nearest distributor, call

0734 510033

Fax: 0734 510044

© Fine Agrochemicals Ltd., Worcester WR2 5AA.

## YOU'RE ONTO A WINNER WITH GREENKEEPER INTERNATIONAL

Find three tiny £50 notes - win a real one, for free!

HERE WE GO with another chance to WIN £50 with Greenkeeper International!

All you have to do is take a look at the £50 note symbol above. Now look through the ads in the Buyers' Guide section and spot THREE of them - they've been reduced in size, but they're there, somewhere!

Write down the names of the three ads where the £50 notes are located and send your entries on a postcard to: Note the Notes Competition, BIGGA, Aldwark Manor, Aldwark, Alne, York, North Yorkshire YO6 2NF, to be received by first post Friday, September 23, 1994. The first correct entry drawn after that date will win £50. It could be YOU! Enter today - and Note the Notes!

Judges' decision is final. Not open to BIGGA staff.

★ Last month's eagle-eyed winner was Alasdair McLaren, course manager at Abernethy Golf Club, who scoops the cash prize of a very worthwhile £50. Will it be your turn for success next month? Get searching - note the notes and be a winner with Greenkeeper International!

## Arboriculture



- Tree Spade Hire
- Semi Mature Trees supplied
- Mulches supplied

Ring for colour brochures

Iver, Bucks, SLO 9LA  
Tel 0753 652022  
Fax 0753 653007

## Architects



### JONATHAN GAUNT

B.A. (Hons.) Dip L.A.  
GOLF COURSE ARCHITECT

From feasibility studies to complete design projects including contract supervision

40C NORWICH ROAD FOREST GATE  
LONDON E7 9JH

TEL: 081 555 8577 FAX: 081 519 6163

Associate of the British Institute of Golf Course Architects

## Artificial Grass



Worting House  
Basingstoke  
Hants RG23 8PY  
Tel: 0256 811014

- COURSE CONSTRUCTION •
- SYNTHETIC GRASS TEES •
- WINTER GREENS •
- ADVENTURE GOLF •



UNIT 25, COWLING MILL  
COWLING BROW  
CHORLEY  
LANCASHIRE PR6 0QG

Tel: 0257 269983/269069  
Fax: 0257 261064

- VERDE TEE FRAME  
Steel platform, woven grass top.
- VERDE WINTER TEE  
Generous size, self-install kit.
- VERDE DRIVING MATS  
Top quality - Long Life - Best Prices.
- ARTIFICIAL GRASSES
- DRIVING BAYS AND NETS  
For club and home use.

TWENTY YEARS EXPERIENCE SUPPLYING THE BEST SURFACES AT COMPETITIVE PRICES.

Please call for samples & information

## Bacteria



### GREEN CIRCLE

The biological way to:

- ✓ Degrade Thatch
- ✓ Increase Root Depth
- ✓ Promote Fine Grasses
- ✓ Reduce Fertiliser Needs
- ✓ Combat Disease

Tel: England/Wales: 081 669 0011  
Scotland 0764 683250  
Ireland 045 61389

## Bark



### PATHFORM™ Hardwood Chips

Ring for samples and colour brochure

Iver, Bucks, SLO 9LA  
Tel 0753 652022  
Fax 0753 653007

## M & B SUPPLIES

Walkway Chips,  
Softwood Bark - All Grades,  
Fertilizers, Composts, Peat,  
Horticultural Sundries

Baths Road, Longton,  
Stoke-on-Trent  
Staffordshire. ST3 2JQ

Telephone 0782 593233

## Bridges



TOTAL TIMBER ENGINEERING

HICKSON LEISURE DEVELOPMENTS

### BRIDGES

Pedestrian and Vehicular  
REVETMENTS  
SHEET PILING  
SHELTERS

HICKSON LEISURE DEVELOPMENTS  
NEW POTTER GRANGE ROAD, GOOLE  
NORTH HUMBERSIDE DN14 6XF  
telephone (0405) 766060 fax (0405) 768622



## BUSINESSES

Don't miss your chance to take part in the SHOW OF THE YEAR. Call Louise Lunn at BIGGA on 0347 838581 for an information pack!

## Buildings



### Club Houses Driving Range Buildings

GREENKEEPERS STORES DESIGNED TO INCLUDE:

- As Required
- ♦ Machinery Storage ♦ Maintenance Workshops
- ♦ Fertiliser and Weedkiller Storage
- ♦ Offices and Staff Mess Rooms
- ♦ Any other specialist usages

FREE initial designs and costings  
PLEASE CONTACT

**Ivan J Cooper Ltd**  
Steel Framed Buildings  
Moorside Works, Caudon Lowe,  
Stoke-on-Trent ST10 3ET  
Tel: 0538 702282 Fax: 0538 702662

## Cockleshells



**PHOENIX  
SPORTS TURF  
SERVICES**

### COCKLESHELLS

#### Delivered Nationwide

"SUPPLIERS OF QUALITY FINE TURF,  
CONSTRUCTION SOILS, ROOT ZONES &  
DRESSINGS"

Tel: 0229 468001 Fax: 0229 468002

20 Nelson Street, Dalton-in-Furness,  
Cumbria LA15 8AF

## Chemical Disposal

### CHEMICAL & EMPTY CONTAINER DISPOSAL A PROBLEM?

ENVIROGREEN offer a Specialist  
Pesticide Disposal Service for both  
full and empty Container disposal.  
Also Record Books, Signs, Chemical  
& Fuel Stores and Protective Clothing

ENVIROGREEN Limited  
The Maxwell Hart Building,  
612 Reading Road, Winnersh,  
Wokingham, Berkshire RG11 5HF  
Registration No: BRL/05342  
Tel: 0345 125398

## Construction



### CONTACT THE PROFESSIONALS

Tim Banks, Secretary, BAGCC,  
Angel Court, Dairy Yard, High Street,  
Market Harborough LE16 7NL.

Tel: 0858 464346

## Michael Lowe & Associates



GOLF COURSE DESIGN,  
CONSTRUCTION & CONSULTANCY

Design only, complete construction or  
any stage in between, including  
Drainage.

Pro-Shop, 72 Brynau Road,  
Llandudno, Gwynedd

Tel: (0492) 876878 Fax: (0492) 872420



## G.O.L.F. LANDSCAPES LIMITED

ASHWELLS ROAD, BENTLEY  
BRENTWOOD, ESSEX CM15 9SR

TEL: (0277) 373720  
FAX: (0277) 374834

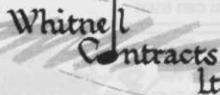


25-27 January 1995,  
Harrogate, Yorkshire

Details from Louise Lunn  
at BIGGA on 0347 838581

## Whitnell Contracts Ltd Golf Course Constructors

Woodlands, Ellis Road  
Boxted, Colchester  
Essex CO4 5RN  
Tel: (0206) 272834  
Fax: (0206) 272104  
Mobile: 0860 421074



## C.J. Collins Construction

Golf Course Contractors

Specialists in complete  
construction, or green,  
tee, bunker and  
drainage refurbishments



Burgess Hill, West Sussex

Tel: 0444 242993  
Fax: 0444 247318

## Consultancy

### David Hemstock Associates

Consultants on:

- Golf Course upgrading
- New Course development
- Specialists in irrigation, drainage, contour and environmental surveys.

Suite 4d, East Mill, Bridgefoot, Belper,  
Derbyshire DE5 1XF.  
Tel: 0773 827115 Fax: 0773 821083  
Mobile: 0850 744957

## IMPERIAL LANDSCAPES Fine Turf & Golf Course Consultants

♦ Tel: (0234) 851651 ♦ (0908) 615680  
♦ Mobile: (0836) 767940

Moreton Lodge, Moorland,  
Bromham, Beds MK43 8LU

## Course Accessories

**WHY DOES  
TACIT'S  
FLAGPOLE LAST  
TWICE AS  
LONG?**



## EAGLES, BIRDIES, FALDOS

Tacit's upright flagpoles  
could have the same effect  
with your members.

TACIT - Suppliers of  
Holecups, Flagpoles and  
equipment for  
European Ryder Cup 1993  
The Belfry.

## TACIT

Manufacturers of quality  
Golf Course Accessories

Tel: 0788 568818  
Fax: 0788 537485

## Drainage

### SLEATH & SON SPORTSTURF DRAINAGE

Full range of modern equipment providing  
UK and European service  
Contact Geoff Sleath  
Tel: (0709) 862109 Fax: (0709) 862075

## AGRIPOWER LTD.

Construction  
Drainage  
Stone Picking  
Verti-Draining

Tel: (0494) 866776



**WHITE HORSE  
CONTRACTORS LTD  
SPORTSTURF**  
OXFORD (0865) 736272



Golf Courses  
and  
Sportsfields  
♦ Drainage  
♦ Construction  
♦ Water Mains  
♦ Fin Drains  
♦ Approved sand,  
gravel and pipe  
supplied

Sunnyside, Blairadam, by Kelty,  
Fife KY4 0HY  
Tel: (0383) 830217  
Fax: (0383) 831771

## Driving Range Equipment

### DRIVING RANGE SUPPLIES EASY PICKER

Europe Ltd

### GOLF DRIVING RANGE EQUIPMENT

Upgrade your practice area using the  
world's most popular range ball picker.  
Also suppliers of ball dispensers, ball  
washers, top quality range mats and  
winter tees.

Tel: 0508 528828  
Fax: 0508 520909

## Environmental Products

*For natural and  
environmental  
solutions to get  
you growing,  
contact:*

## farmura

Stone Hill, Egerton, Ashford,  
Kent TN27 9DU  
Tel: 0233 756241 Fax: 0233 756419

## Fertilisers



The top organic fertiliser for tees,  
fairways and ground under repair

For more information contact  
J Russell (Ayr)

Tel/Fax: 01292 267601

D McWhirter (Perth)

Tel/Fax: 01738 440613

## Sierrablen Turfmix

Controlled Release Fertilizer  
with fast start portion

A single application assures  
feeding for the whole  
growing season.

High Quality. Proven In Practice

### Grace-Sierra UK Ltd

High technology in plant nutrition  
61 Loughborough Road, West Bridgford,  
Nottingham NG2 7LA

Tel: 0602 455100 • Fax: 0602 455311

## Golf Course Supplies



## STRIKE TOP TURF

Merchants to the sports  
and leisure trade

The complete range under one banner  
- if you require it, we will have it

Fertilisers - all grades and types, loams and dressings,  
pesticides, top dressing, Rootzone, cockleshell;  
Horticultural and agricultural tools, golf course  
equipment, work clothing and much, much more!

Call 061 456 7109 or mobile 0831 639798

for up to date list and quote

40 Offerton Road, Hazel Grove, Stockport,  
Cheshire SK7 4NL

## Golf Course Supplies

# Martin Brothers

**TOP QUALITY,  
TOP SERVICE**

Distributors of

**Cheshire Quality  
Top Dressings,  
Root Zones and  
Tee Mixture**

**MoneyStone  
Bunker Sand  
Britain's best,  
head and  
shoulders above  
the rest**

**Par-Link Red  
Pathway Gravel  
ideal link from  
Green to Tee,  
any course  
anywhere**

**24hr ACTION LINE  
0625 584571**

## Grass Cutting Equipment

**SAVE MONEY!** 

EX DEMONSTRATION  
AND TOP QUALITY REMANUFACTURED  
GOLF COURSE MACHINERY AVAILABLE  
FROM STOCK

**TORO JACOBSEN**  
**RANSOMES BEAVER**  
**RYAN HAYTER**  
**sisis CUSHMAN ROYER**  
**VERTI-DRAIN**  
**Loyds ISEKI KUBOTA**

UK & EXPORT DELIVERY ARRANGED  
*Phone for a full catalogue NOW*  
**GREENSWARD  
ENGINEERING COMPANY**  
Manor Farm, Otley Road, Adel,  
Leeds LS16 7AL, England  
Tel: (0532) 676000

## Grass Seed

**Turf Management**  
Systems

for  
**PRE-GERMINATED GRASS SEED  
"LIQUID SOD" SPRAY ON GRASS  
TOP DRESSINGS  
GRASS SEED  
FERTILISERS  
HERBICIDES  
HORTICULTURAL PRODUCTS**  
and

**All Turfcare Materials**

**Dromenagh Farm,  
Sevenhills Road, Iver Heath,  
Bucks SL0 0PA  
Tel: 0895 834411  
Fax: 0895 834892**

**GERSON  
Grass Seed**

**QUALITY AMENITY  
GRASS SEEDS  
& WILD FLOWERS**

119 Holloway Head,  
Birmingham B1 1QP  
Tel: 021 631 2303  
Fax: 021 633 0281

**PROBLEM AREAS?  
Scan-Seeding is  
the answer**

Our unique, mulch-free  
hydroseeding system will  
solve your seeding problems  
on difficult areas such as  
banks, slopes or where soil  
erosion may occur.

The unique Scan-Binder soil  
stabiliser ensures that the  
seed stays in position until  
germination and  
establishment.

Call us now for more  
details and a quotation on  
**0372 749909**

**SCAN-SEED**

(U.K.) LIMITED

Franchises available

## Irrigation

**HORTECH  
SYSTEMS LTD.**

**TURF IRRIGATION  
SPECIALISTS**

We offer full design, installation  
and After Sales Service  
**Hortech Systems Ltd,**  
Hallgate, Holbeach,  
Spalding, Lincs PE12 7LG  
Tel: 0406 426513

**Rain Rotor®**

The impact sprinkler for tees,  
greens and fairways made in

Britain by  
**CRESWELL  
ENGINEERING LTD**

340/342 Cherrywood Road,  
Birmingham B9 4UU  
Tel: 021 772 2512  
Fax: 021 773 9548

**T. & G. TURF  
IRRIGATION SERVICES**

38 Halfpenny Lane, Knaresborough,  
North Yorkshire HG5 0NS  
Tel & Fax: (0423) 864963  
Full member of B.T.L.I.A.

**Making sure your  
Golf Irrigation system  
isn't a handicap.**

Contact: S. Penny  
109 Chapel Road, Hesketh Bank, Preston,  
Lancs., PR4 6RU Tel: (0772) 813571  
Southern Office: N. Ford Tel: (0708) 761717

**AQUAPLAST**  
Putting water in its place

**Watermation**

Manufacturers, designers  
and installers of

**GOLF COURSE  
IRRIGATION  
FOR 24 YEARS**

Tongham Road, Aldershot,  
Hants GU12 4AA

Tel: 0252 336838  
Fax: 0252 336808

**A National  
Irrigation Service**

Free consultation and design  
service

Suppliers of quality products for  
all types of irrigation

Local installation and  
maintenance throughout the UK

Specialists in the refurbishment of  
existing irrigation systems

For further information  
telephone 0460 241939

**OCMIS**

Design and service  
you can trust

**PAR (IRRIGATION) LTD** **TORO**  
Installation  
Sales  
& Service  
N.E. England, Yorkshire,  
N. Lincs, N. Derbys, N. & S. Humberside  
Contact: E.B. & L. Simms  
Tel: (0765) 602175 Fax: (0765) 603488  
Par 4, Unit 18, Camphill Close,  
Dalliamres Lane, Ripon,  
N. Yorks HG4 1TT

**MIDLAND IRRIGATION**

AN INDEPENDENT IRRIGATION COMPANY  
2 Fairdene Way, Great Barr,  
Birmingham B43 5JS

Tel: 021 358 1246  
Fax: 021 357 6789

DESIGN • SUPPLY  
INSTALLATION • SERVICE  
Full member of BTLIA

**B SERVICE** **TORO IRRIGATION**  
**BELL TURF & IRRIGATION  
SERVICES**

East Midlands Area  
Installation, Sales and  
Service

Everton, Doncaster, DN10 5DR  
Tel: (0777) 817410

**Hunter®**

The Irrigation Innovators  
**Gear driven sprinklers  
including the new golf range  
available from**

**S.G.I. Sales**  
6 Stuart Road,  
Market Harborough,  
Leics LE16 9PQ

Tel: 0858 463153  
Fax: 0858 410085

**NOW YOU HAVE A CHOICE!**

**BRITISH OVERHEAD  
IRRIGATION LTD.**

• Manufacture Equipment •  
• Design and Install Systems •  
The Green, Upper Halliford,  
Shepperton, Middlesex TW17 8RY  
Tel: (0932) 788301. Fax: (0932) 780437

**Automatic Watering  
Systems for Sports  
and Leisure Grounds**

• Designed • Supplied • Installed

**GLEN HEAT & IRRIGATION**  
Pinchbeck, Spalding, Lincs.

**Gh** Tel: (0775) 722327  
Fax: (0775) 725444

## Lake Construction



**GT GROUP  
LEAST COST  
WATERPROOFING OF  
LAKES AND RESERVOIRS**

– using lining membranes and associated  
geosynthetic materials.

◆ Comprehensive service available to  
owners/architects/consultants and contractors.  
GT GROUP, Nags Corner, Wiston Road,  
Nayland, COLCHESTER CO6 4LT  
For technical and sales enquiries  
Tel: (0206) 262676  
Fax: (0206) 262998

## Machinery Repairs

**A.M.R.**

HORTICULTURAL ENGINEERS

Service and repairs of all makes  
of professional grass cutting  
equipment for the sports and  
leisure industry

Contact Andrew or Rosemary  
Tel/Fax: 0827 284415

Unit 7, Roman Park, Tame Valley Industrial  
Estate, Wilnecote, Tamworth, Staffs B77 5DQ

## Mower Spares

**MOWER ACCESSORIES  
LTD**

Manufacturers of high  
quality lawnmower  
blades and cylinders.  
Suppliers of spares and  
accessories.

65 Fornett Street  
Sheffield S4

Tel: 0742 765825  
Fax: 0742 765855

## Netting

**TILDENET**

★ Germination Sheets  
★ Frost Protection Sheets  
★ Target Nets  
★ Perimeter Netting  
★ Ball Stop Netting  
★ Rain Covers  
★ Mobile and Static Nets

Available from all good distributors  
Longbrook House, Ashton Vale  
Road, Bristol BS3 2HA  
Tel: 0272 669684

## pH Adjustment

# High pH?

**Liquid Sulphur**  
is a unique source of flowable sulphur for use as a nutrient additive or pH adjuster.

Available exclusively from

**Liquid Sod**  
and its distributors.

Ring 0963 251129 today for more information and your own FREE pH adjuster chart.

LIQUID SOD, LINDEN VIEW, REDWING ROAD, MILBORNE PORT, SHERBORNE, DORSET, DT9 5DB

## Railway Sleepers



10' x 5' x 8'6"  
FROM £6 EACH  
Hundreds of uses in:  
♦ Golf Courses ♦ Civil Engineering  
♦ Farming ♦ Landscape Gardening ♦ Fish Farms  
♦ Garden Centres

**ASHWELL MAKE IT EASY**  
♦ Sale, hire or buyback ♦ Choice of new or used  
♦ Generous bulk discount ♦ Cutting service  
♦ Sale or return ♦ Delivery

## ASHWELL

Tel: 0375 892576 Fax: 0375 891736  
Unit G, Criton Ind. Est., Stanford Rd, Orsett, Essex RM16 3DH

**RAILWAY SLEEPERS**  
8'6" x 10" x 5"

**CROSSING TIMBERS**  
12" x 6" up to 16' long

Price quoted for number required

**TELEGRAPH POLES**  
NEW AND SECONDHAND

Tel (0233) 625121 or 620277

Faggs Fleet, Whitfield Road, Ashford, Kent

## Sand/Silica Sand



Complete range of damp and dried graded silica sands for all purposes.

Contact John Deavin at  
Eastern Way Works,  
Eastern Way, Heath & Reach,  
Leighton Buzzard,  
Beds LU7 9LF  
Tel: (0525) 237911  
Fax: (0525) 237991

## Drinkwater Babay Ltd

(EBENEZER MEARS)

KINGSLEY FINE WASHED SAND  
for Tees · Greens · Bunkers  
and drainage sands and shingles

Wintersells Road, Byfleet, KT14 7AZ

**0932 345616**

## ARC BUCKLAND INDUSTRIAL MINERALS

Sand and Silica Company

COMPLETE RANGE OF HORTICULTURAL SANDS

Contact Lynda Jordan  
Buckland Sand & Silica Co.  
Reigate Heath, Reigate,  
Surrey RH2 9RG  
Tel: (0737) 240151

## GRUNDON

**NOW SPREADING IN YOUR AREA**

Top Dressing  
Bunker Sand  
Root Zone  
Tees Dressing  
All Aggregates  
Path Gravels  
Cockleshell

**NEW HOTLINE NUMBER:**  
Contact Gordon  
on 0367 244078

## TOP GRADE TOP DRESSINGS

Lime free dried & washed sands  
Lime free moist & washed sands  
Bulk 24 hour delivery service

## ARNOLD SANDS FOR INDUSTRY

Arnold Sands Ltd  
PO Box 542  
Leighton Buzzard  
Bedfordshire LU7 8FH  
Tel: (0582) 477322  
Fax: (0582) 661476

## Screeners/Shredders

### GRADE ALL

GRADEALL INTERNATIONAL LIMITED  
Manufacturers of the S510  
Screener/Shredder



9 Furlough Road, Dungannon,  
Northern Ireland BT71 4DT  
Tel: 08687 40484 · Fax: 08687 48823

## Seats

## Gloster

FINE TEAK FURNITURE

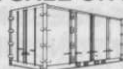


Seats, tables, chairs, benches, planters and litterbins made from plantation grown teak. Listed in the Good Wood Guide. Send for brochure

D-Scan (UK) Ltd Concorde Road,  
Patchway, Bristol BS12 5TB  
Tel: 0272 315335 Fax: 0272 315334

## Secure Storage

SECURE STEEL LOCK-UPS  
(Ex Shipping Containers)  
FOR SALE OR HIRE



Delivered to your golf club or premises by self unloading lorries within 24 hours (Mainland UK) 10' x 8', 20' x 8' and 40' x 8' insulated or uninsulated.

IF YOU NEED ECONOMIC SECURE STORAGE  
RING NOW FOR PROMPT  
EFFICIENT SERVICE

**LAWRENCE CONTAINERS**  
Tel: 0622 820308  
Fax: 0622 820300

## Tee Mats



- Suppliers of the Dunlop Winter Tee & Practice Mat
- Golf Course Furniture
- Driving Range & Practice Ground Equipment

**Tel: 01704 541055**  
**Fax: 01704 536594**

## LINKS LEISURE

### PRO-TEE ALL-WEATHER GOLF MAT

Robust, durable GRC base with three replaceable artificial turf sections.

The ideal substitute for the natural grass tee.



**Tel 0948 663002**  
**or Fax 0948 666381 for details**

## TEEMASTER

BY PRO-AM GOLF SERVICES LTD

YOUR WINTER AND PRACTICE TEE SPECIALISTS

Tel: (0446) 700130/733063

Pro-Am Golf Services Ltd.,  
Unit 20, Atlantic Trading Estate,  
Barry, South Glam., CF63 6RF

## TUFTURF

ARTIFICIAL GRASS TEE MATS,  
DRIVING RANGE MATS AND  
PUTTING SURFACES FROM

## CARPETITION LTD

14 Kaffir Road, Edgerton,  
Huddersfield HD2 2AN

Tel: (0484) 428777 Fax: (0484) 423251

## Timber Structures

## TIMBERMAT

Protect your greens from heavy machines - hire Timbermats.  
Phone 061 476 6252 Fax 061 476 6253  
NATIONWIDE SERVICE

## Tree Planting

Tree Planting Service  
Large Grants Available

Eamonn Wall & Co.  
Woodland Design and Management  
22 West Burnside, Dollar  
Tel: 0259 743212



**Eastcote Nurseries (Solihull) Ltd**

- ★ Tree Spade hire
- ★ Tree moving
- ★ Semi mature trees

Nationwide service  
Hampton Road, Barston, Solihull,  
West Midlands B92 0JL

**Tel: 0675 442033**  
**Fax: 0675 442324**

## Trenchers

TRENCHERS FOR HIRE

Width: 15cm-30cm  
Depth: up to 122cm

**Trenchex Plant Sales**  
Tel: 0889 565155 Fax: 0889 563140

## Turf



## TILLERS

Growers of high quality turf supplied nationwide in standard and big rolls. All turf grown on sandy, stone-free soil.

For more information, contact  
Tim Fell at:

**Tillers Turf Company Ltd**  
Castlethorpe, Brigg,  
South Humberside DN20 9LG

**Tel: 0652 650555**  
**Fax: 0652 650064**

## INTURF

GROWERS AND SUPPLIERS OF HIGH QUALITY CULTIVATED TURF FOR ALL APPLICATIONS AND APPOINTED OFFICIAL TURF PRODUCERS TO WEMBLEY STADIUM

Please contact Head Office for more information:

### THE INTURF GROUP

Regent Street • Pocklington • York YO4 2QN  
Telephone 0759 304101 • Fax 0759 305229



**EXCELLENCE THROUGH EXPERIENCE**

## Shelford

Beech Tree Farm, Shepreth Road,  
Foxton, Cambridge  
Tel: (0223) 871814. Fax: (0223) 872354

## Grasslands

Specialist Seed Grown Turf Producers  
COVERING THE SOUTH  
Grasslands Turf Farm, Ashford Road,  
New Romney, Kent TN28 8TH  
Tel/Fax: (0797) 367130



Growers of consistent quality turf in  
either big or small rolls for landscapers,  
amenity users and golf courses

Tel: 0728 688 984  
Fax: 0728 688 949

Fir Tree Farm, Blaxhall, Woodbridge,  
Suffolk IP12 2DX

## Tip Top Turf.

Seed grown turf available in one sq yd  
or large 25 sq yd rolls with laying  
machines or service available.

Tel: 0908 270701 • Fax: 0908 374889

## TURF GROWN TO YOUR SEED SPECIFICATION

or from our stock  
ALL GROWN IN STERILE  
COMPOST

Supplied nationwide  
**GREENKEEPER LTD,**  
Shelford Manor, Shelford,  
Nottingham NG12 1ER

Tel/Fax: 0949 21144

## Turf Dressings

# Rufford

TOP-DRESS SUPPLIES

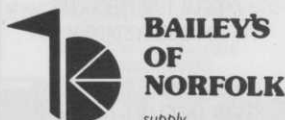
Britain's No. 1 for  
QUALITY • SERVICE •  
SHEER VALUE FOR MONEY

Fairway House, South Stage, Broadway,  
Salford Quays, Manchester M5 2UQ  
Tel: 061 877 8550 Fax: 061 877 8554

## GREENBASE ECOLOGICAL LIMITED

The ProBase range of Products for  
Turf Dressings and Construction  
materials. Lightweight. User friendly  
and economical

Tel: 0427 811738 • Fax: 0427 810405



supply  
Professional Turf Dressings  
for the Profession

GOLF TURF DRESSINGS  
Approved formulations for use in  
Construction and on the finest greens,  
tees and fairways.

### SAND

All requirements catered for including  
lime free. Kiln dried sands available.

### SCREENED TOP SOIL

Including the finest Black Fenland Soil.  
Screened loams to customers'  
individual specifications.

We also produce and supply root zone  
mix and always have vast stocks of  
cockle shells for immediate delivery

DELIVERIES NATIONWIDE

## BAILEY'S OF NORFOLK

Brick Kiln Road, Hevingham,  
Norwich, Norfolk NR10 5NL

Tel: 0603 754607  
Mobile: 0860 661603



For  
TURF DRESSINGS  
ROOT ZONE MIXES  
SCREENED TOP SOILS  
BUNKER SANDS  
HORTICULTURAL  
COMPOSTS

Telford Way, Kettering,  
Northants  
Tel: 0536 510515

## FEN TURF DRESSINGS LTD

for Fendress Top Dressing

- Fendress Superfine
- Economy Dressing
- Rootzone Mixes
- Screened Fensoil • Screened Peat
- Screened Loam • Kiln Dried Sand
- Bunker Sands



Tel: (0858) 464346/433003  
Fax: (0858) 434734

## Turf Maintenance



PROFESSIONAL TURF  
MAINTENANCE AND RENOVATION  
EQUIPMENT AVAILABLE FOR HIRE

## J. WOOD & SON

(BILSDALE PLOUGHS) LTD

Tel: (0377) 253313 Fax: (0377) 257465

DRIFFIELD • RYEDALE • YORK

## Tyres

## FLOTATION TURF TYRES

- ★ Wide Flat Threads ★
- ★ New & Used Custom Wheels ★
- ★ Bargain Prices ★

### ROTO TYRE LTD

Graveyard Lane, Ormskirk, Lancs  
Tel: 0695 421100 Fax: 0695 424265

## Sam Moreton & Sons TURF TYRE

Turf Tyres of all makes to fit  
any machine. Wheels made to  
customer requirements.

Enquiries 0926-632269

Fax 0926 632023

Orders 0926 613737

Nationwide delivery service

## Vertidrain Hire



VERTIDRAIN AND HOLLOW  
CORING MACHINES  
AVAILABLE FOR HIRE

Contact: Peter Holmes, 10 Carson  
Road, Gainsborough, Lincs DN21 2RE

Tel: 0427 613035  
Mobile: 0831 359394

## ROSS OLIVER SPORTS GROUND CONSTRUCTION AND MAINTENANCE

- VERTI-DRAIN for Greens and Sportsgrounds
  - STONE PICKING • RYAN HOLLOW TYNER
  - SAND SPREADERS • DIRECT DRILLS
- Greystones, Trebudannon, Cornwall TR8 4LP.  
Tel: (0841) 540222 Fax: (0637) 881057

## PETER MANNINGTON



Specialist Verti-Drain Contractor for the South  
For greens, tees, fairways and sportsgrounds  
Experienced operator, competitive prices and reliable service

Phone Peter on 0580 200205  
or Mobile 0850 612061

Sheepwash Farm, Church Street, Ticehurst,  
Wadhurst, East Sussex TN5 7DL

## MIDLAND TURF AERATING SERVICE

- ★ Verti-Draining ★ Hollow  
Coring with Ryan GA30
- ★ Core Collector ★ Deep  
Slitting ★ Top Dresser
- ★ Over-Seeder
- ★ Tractor Hire
- ★ Competitive  
prices ★ Professional  
nationwide service.

Tel/Fax 0922 417567

Charles Frost

## PARKER HART

Verti-draining, hollow coring,  
conventional and hydro-seeding  
throughout the South East

Complete range of turfcare  
machinery available for hire

Competitive rates  
Reliable equipment  
Experienced operators

Call Karen or Anne

081 337 7791

## Richard Campey

For vertidrain, hollow  
coring, scarifying, and  
overseeding requirements.  
1.5m and 2.5m vertidrains  
Greencare Corers  
Charterhouse Vertiseed

Marton Hall Lane, Marton,  
Macclesfield.

Tel: 0260 224568

Fax: 0260 224791



## HERONFIELD HIRE

(Solihull)

Vertidrain, Moore Sportsfield  
Over-Seeders, Verti  
Over-Seeder for Greens & Tees,  
Toro Aerators, Case Trenchers  
& Sportsfield Slitters etc.  
Contact: Doug or Ron Johnson

Tel: (0564) 772597

Fax available

## E&S SPORTSGROUND CONTRACTORS

We're No. 1 for Vertidrain, Hollow  
Tining and Core Collection

For competitive rates and a  
professional service, contact

RICHARD VEITCH  
0734 795454

The Fairways, King Street Lane, Winnersh,  
Wokingham, Berkshire RG11 5AX  
Fax: 0734 795353



- ◆ Verti Drain Hire ◆ Hollow Coring
- ◆ Deep Spiking ◆ Tractor Hire
- ◆ Full range of Landscape  
Equipment

YORKSHIRE'S ONLY AGENT FOR WIEDENMANN TERRA-SPIKE

## SPEN GROUNDCARE SERVICES

Unit 7, Valley Road, Liversedge,  
West Yorkshire WF15 6JY  
0924 401522 • 0836 722080

## SEWARD TURF MAINTENANCE

CONTACT THE PROFESSIONALS

Ten years experience using only the best

2 greens verti-drains

(18 greens in 2 days)

Half-inch tines at 2x2 spacing

Fairway verti-drain

Coremaster complete with collector

Fairway overseeder

Contact Michael Seward

York (0904) 765949 night or day

## WORTH DRAINING

VERTIDRAINING and  
HOLLOW CORING HIRE  
with the RYAN G.A. 30

Contact Peter Bloodworth

## WORTH DRAINING

Cornbecks Farm, Irnham, Grantham,  
Lincolnshire Tel/Fax: (0476) 550266

## Weed Killing



## WEED FREE (BRACKNELL)

Professional Weed Killing &  
Associated Turf Services

MIKE SEATON F.Inst.G(Dip)

Tel: (0344) 481011

Fax: (0344) 300052

Mobile: (0850) 300104

You're at the end  
of the Buyers'  
Guide section — if  
you haven't found  
the ads with the  
3 symbols in yet,

TRY AGAIN:  
IT COULD BE  
WORTH

# £50

TO YOU!



# Classified

## Machinery For Sale

### QUALITY REBUILT GROUND CARE MACHINERY

Iseki TU 318 Tractor 21hp, cab, creep gearbox, ex. demo: £5,995 +VAT

★ Gang Mowers ★ Triple Mowers  
★ Cylinder Mowers ★ Aeration  
Equipment ★ Scarification & Collection  
Equipment ★ Nationwide Delivery,  
Export by Arrangement

**EFG GARDEN MACHINERY**  
Tenterfields Business Park,  
Luddendenfoot, Halifax HX2 6EJ.  
Tel: 0422 882165  
Fax: 0422 886014



## Breakwell's

Ransomes GT Classic with Vertigroom Units  
.....NEW from: £11,500  
Ransomes GT Champion with Vertigroom Units  
.....NEW or ex-demo from: £7,500  
Ransomes Fairway 300  
.....ex-demo from: £19,500  
Ransomes Motor 180D 7 Knife and Boxes  
.....ex-demo from: £8,250  
Ransomes T23D Rotary 60" Rear Discharge  
.....ex-demo from: £8,000  
Ransomes Motor 180/D Fixed Head Unit Only  
.....ex-demo from: £875  
Ransomes Greens Pro 56 Transport Wheels  
.....NEW from: £1,900  
Ryan GA30 Aerator .....ex-demo from: £7,500  
Ryan Mataway Overseeder  
.....ex-demo from: £2,500  
Ryan Mataway .....NEW from: £1,900  
Telephone: 021 733 3344

### G E Adamson Grass Machinery

Ransomes 3 set Magna or Sports trailed -  
new cylinders .....£2500  
Ransomes Super Certes 51 c/w comb  
wheels. As new .....£1250  
Ransomes 213D Triple .....£3950  
Lloyds 21 Paladin 8 blade. New engine  
.....£995  
Compact Tractors and Machinery  
All prices inclusive of transport but subject to VAT.  
Tel/Fax: 0995 640180

# Job Shop

27 year old head  
greenkeeper seeks change.

Fully conversant with a very  
wide range of machinery and  
other course products.

Seeks position in the  
machinery or fertiliser/  
pesticide market;  
representative or  
demonstrator would suit.

Southern England preferred.

Box No JS 7/94, BIGGA, Aldwark  
Manor, Aldwark, Aline, York YO6 2NF

23 year old senior assistant  
seeks position of deputy/first  
assistant greenkeeper.

Six and a half years  
experience on 18 and 27 hole  
courses, modern machinery,  
computerised irrigation  
systems, construction and  
growing in of USGA spec  
greens. C&G Phases 1, 2, 3,  
Groundsmanship and Sports  
Turf Management PA1 and  
PA2A Spraying Certificate.

Box No JS 8/94, BIGGA, Aldwark  
Manor, Aldwark, Aline, York YO6 2NF

## Richard Campey

Set of 5 Verticut units to Toro 450D,  
used once, as new .....£3,500

Set of 5 Ransomes Verticut units to  
fit 214 or Hyd 5 .....£2,500

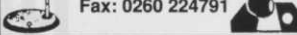
John Deere AMT 525 load carrier  
4WD, very clean .....£2,750

Tractors and other machinery  
available.

Telephone/Fax for further details.

Marton Hall Lane, Marton,  
Macclesfield

Tel: 0260 224568  
0260 252101 after 6pm  
Fax: 0260 224791



## Purdys Grass Machinery

JACOBSEN DISTRIBUTORS  
Largest selection of professional  
used and reconditioned grass  
machinery in the Midlands

Aebi TT 77hp complete with flail  
and rotary.

Ransomes Hydr Mtd 5.

Ransomes 213 D's and 350 D's.

Trailed gangs. Howard Gem.

Kubota 8200 with set of 3 Hayter  
Wrap Round. Triples.

CONTACT  
**CHRIS BRYDEN**  
0777 704275  
EVENINGS: 0602 209401

## Soil Conditioners

**KELPIE**  
NATURAL COMPOSTED  
SEAWEED SOIL CONDITIONER  
FROM **STEWARTS**  
TEL: 031-663 6617  
FAX: 031-663 0651

## Reward

### REWARD

For information on  
stolen 1992 Iseki 530  
Tractor, Amazone  
1.5 metre Seed Drill,  
2600 Bateson Trailer,  
rear half newly  
boarded. Phone in  
strict confidence to  
0904 705221

## Construction



## Lakes & Greens

Golf course construction  
and improvements

◆ Specialist Drainage ◆ Greens and  
Tees improvements and construction  
◆ Lake Construction ◆ Design and  
agronomy advice

0825 790483

## RECRUITMENT



### SPORTS TURF SERVICES SALES

Newbridge Midlothian EH28 8LE Fax 031 333 5311 • Tel 031 333 2345

The Scottish division of Rigby Taylor Ltd

Due to the continued expansion of our sales team we require a

### TECHNICAL REPRESENTATIVE

To cover an area based in Edinburgh. Applicants must be self motivated  
with experience in golf course or sports turf maintenance.

The group offer a competitive salary, commission and an excellent benefit  
package including a company car.

Full product training will be given to the successful applicant.  
Applications in writing to **Mr Andrew Robinson** at the above address



## DUKE'S DENE Golf Club

We are inviting applications for the position of

### ASSISTANT COURSE MANAGER

The successful applicant will hold all relevant greenkeep-  
ing qualifications including PA1 and PA2A and should  
have at least five years' experience in all aspects of mod-  
ern golf course maintenance. The ability to lead and moti-  
vate staff is also important.

Also required is a

### GOLF COURSE MECHANIC

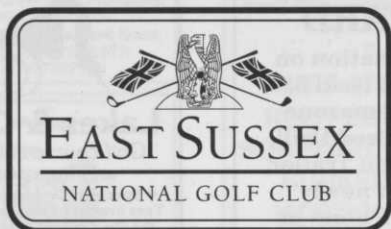
with irrigation experience. The person holding this  
position will be responsible for the maintenance of the golf  
course machinery and the upkeep of the Toro irrigation  
system. The successful applicant should have previous  
golf course or related industry experience.

Written application, with a full CV should be addressed to:

The Course Manager, Duke's Dene Golf Club,  
1 Heathcock Court, 415 Strand, London WC2R 0NS

## Job Shop

Call Carol or Louise  
on 0347 838581 for details of  
Greenkeeper International's  
new Job Shop feature



HOME OF THE EUROPEAN OPEN

Set in the beautiful rolling countryside of the South Downs in the heart of East Sussex, the East Sussex National Golf Club is looking for a

## HEAD GREENKEEPER

to join its team of hardworking, conscientious staff.

With 4/5 years experience and a minimum qualification of City and Guilds Stage I and II, the successful applicant will be required to motivate and supervise staff and take responsibility for programming and overseeing the day to day maintenance of one of the 18 hole courses under the guidance of the Golf Course Manager. East Sussex National prides itself on the high standard and quality of the condition of its two 18 hole courses, three hole Teaching Academy and practice ranges, and this is an excellent career move for an ambitious and confident greenkeeper who can demonstrate sound and positive team management, self-motivation and a willingness to learn new methods and techniques.

Please apply in writing enclosing a current CV to:

**Ken Barber, Golf Course Manager,  
East Sussex National Golf Club,  
Little Horsted, Uckfield, East Sussex TN22 5ES.**

Closing date: 30th September 1994

## Burhill Golf Club

requires an

## EXPERIENCED GREENKEEPER

Qualification levels Phase I and II  
City & Guilds

Phase III Greenkeeping Management  
plus TA1 and TA 2A

Salary negotiable.

Accommodation may be provided.

Application with CV in writing to:

**M B Richards, Secretary/Manager,  
Burhill Golf Club,  
Walton-on-Thames,  
Surrey KT21 4BL**



**VAUXHALL**  
Recreation Club

## Griffin Golf Club

require a

## HEAD GREENKEEPER

Applicants must be suitably qualified and experienced in all aspects of course management.

An ability for hands on management combined with motivation and leadership skills is a high priority.

The successful applicant will have responsibility for the management of the existing 9 hole course and to take over the final growing-in period of a further 12 holes prior to opening the new 18 hole course in 1995.

Salary negotiable but will not include accommodation.

Applications in confidence with full CV to:

**Mrs Jean Johnson, Secretary,  
Griffin Golf Club, Chaul End Road,  
Caddington, Nr Luton, Beds LU1 4AX**

## Finchley Golf Club

seeks a

## HEAD GREENKEEPER

for its Braid-designed 18-hole course

The successful candidate will have some of the following skills, knowledge, experience and personal qualities, and will be rewarded accordingly

- \* Greenkeeping qualifications and knowledge of tree husbandry
- \* Machinery maintenance
- \* Management skills of planning, directing and controlling
- \* The energy and enthusiasm to develop and implement a plan of course improvement
- \* A good standard of golf

If you wish to advance your career, and believe you have the necessary self-motivation, apply to:

**The Secretary, Finchley Golf Club, Nether Court,  
Frith Lane, Mill Hill, London NW7 1PU**

Tel: 081 346 2436 Fax: 081 343 4205