

Fore!

... all your linemarking requirements choose
ROCOL Easyline

**Purchase 6 cans of easyline and get one other colour
free of charge**

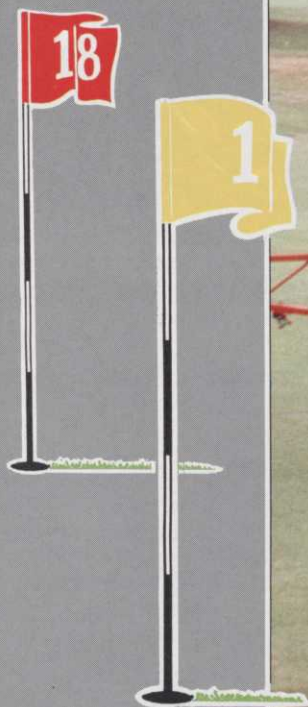
Plus...

**Here's your chance to win a De Vere Leisure Break
at a fabulous De Vere Hotel of your choice.**

**For details contact Joanna Donkin & Quote Ref: GI Leisure Break
ROCOL Safety Products, ROCOL House, Swillington, Leeds LS26 8BS.
Tel: 0113 2866511 Fax: 0113 2872159.**

ROCOL

AD
REF
471



- Meets current Health and Safety regulations
- Mounted/trailed/demountable units
- Choice of tank sizes 200-1500 ltr
- Choice of boom width 4m-12m with optional 3m walk boom



It's the results that count . . .

Contact the experts NOW on 0455 233811

HARDI LTD · 4/5 WATLING CLOSE · SKETCHLEY MEADOWS · HINCKLEY · LEICS LE10 3EX · TEL 0455 233811 · FAX 0455 233815

AD
REF
25

PUT ANDREWS BILLY GOAT ON YOUR WORKFORCE

Let's face it, sweeping, raking and shovelling are dirty and menial jobs that nobody wants.

Our 1994 range of vacuum sweepers, air brooms, truck-loaders and chippers bring your manual workers into the 21st century,

encouraging the vital pride that comes from a good job well done. The relatively small investment is repaid handsomely in a cleaner, better-groomed environment and a happier, more effective workforce.

ASK FOR A DEMONSTRATION ON YOUR OWN GROUND — WITHOUT OBLIGATION. WRITE, TELEPHONE OR FAX.

TERMITE

Here's a really useful and practical combination machine. Besides being the best small vacuum on the market, the Termite swiftly converts small branches (up to 1 1/4 in. dia.) to chips for mulching. Folds for easy transport. 7cu.ft. Trash Bag. Termite enjoys competitive demonstrations!

TRUCKLOADER

The only painless way to load (or unload) large volumes of leaves or other light debris. Model illustrated attaches to any pick-up tailboard without need for tools. 11h.p. B&S engine provides powerful suction through 8in. x 12ft hose, 16h.p. version with 10in. x 12ft hose available.

BLOWER

The quietest and most effective 5, 8 and 11h.p. air brooms available. Only Billy Goat blowers have the unique tangential impellers that move vast volumes of air, enabling bulk leaves and litter to be swept, under total and precise control.

V.Q. VACUUM SWEEPER

With or without stand-on sully. Five forward gears plus reverse; Heavy duty 8h.p. engine; 5in x 11ft Wander-Hose (option); 13in. dia. soft pneumatic Drive Wheels. The V.Q. has been designed to reduce noise and vibration to acceptable levels. The state-of-the-art sweeper for hard or grass surfaces. The one the rest have to beat — No contest!

BOB ANDREWS LTD

1 BILTON IND. ESTATE, LOVELACE RD, BRACKNELL
BERKS RG12 8YT. TEL: 0344 862111 Fax: 0344 861345

THE NEED TO BE

SECURITY CONSCIOUS

Hugh Tilley offers some useful advice on ways of making your maintenance facility and equipment more secure

Theft and vandalism are now a major problem for many golf clubs and while once it was the clubhouse which was the target it has now extended and on some courses it has become impossible for greenkeepers to leave anything out even while they have lunch.

For many the first routine in the morning is to check round to make sure that flags and markers are in position – or that nothing has been dumped. A number of clubs have taken quite radical action to secure their equipment and make everything as vandal-proof as is reasonably possible. This has meant investing in lock-ups, security equipment, lighting and alarms. Small powertools such as brushcutters and workshop equipment are particularly 'nickable' because they are relatively easy to sell, however there has been an increase in the number of larger items such as mowers (including triples) and tractors which have gone missing, and it is assumed that these are stolen to order.

Investing in security may help keep insurance costs down, may be a requirement of continuing cover, or may even allow premiums to be reduced, but in any event it must be worthwhile if only to avoid all the hassle. A few courses, such as St Enodoc in Cornwall (see Page 19), have resorted to employing security guards. Whether such a measure will succeed in other places is a moot point because of the extensive nature of most golf courses and the fact that the presence of a guard may even be an incentive for some to play 'catch me.'

Most vandalism is more annoy-

ing than costly, moved flags, markers thrown around, however damage such as setting fire to sheds or using the greens and fairways as a race track or skidpan is more serious and can render parts of the course temporarily unplayable. One club which has fared particularly badly in the past is Swinton Park Golf Club in Greater Manchester. Their chapter of major incidents includes having the greenkeepers' shed burnt down with a total loss of equipment, having a stolen Range Rover smash through the gates and badly damage several greens, tees and fairways and having a stolen car fired on a green. The loss of flags and rakes is virtually an everyday occurrence.

Another club with by comparison a considerably less severe problem is Queens Park, Bournemouth. Its problem lies in the fact that it is a public open space, accessible to the malevolent and wicked – as well as to many walkers of dogs. Queens Park were particularly worried by vandalising of their previous hose based irrigation system. Being on free draining heathland, irrigation is vital to the course. As a result, in specifying an all new system they insisted that all sprinklers are of the pop-up type. The Toro 644 units proved to be unintrusive to the point that they often need to be switched on to locate them – and they are certainly impossible to pull up without using a spade. Control boxes local to each green and tee are housed in steel boxes under a substantial cover, and while these can be opened and tampered with, when visited last spring there had been no problems, and this was attributed to the fact that electric wires and contacts are very evident. People, including potential vandals, are frightened by electricity. Queens Park pro-

ected the pump and controls inside a substantial concrete block building within the greenkeepers' compound which has a 2.5m high fence around it. The reservoir is also in the compound and roofed to prevent sticks, cones or stones being thrown into it.

For Swinton Park this level of protection is nothing like sufficient. When they had their shed burnt down with the loss of all their equipment they commissioned a local builder to build an impenetrable building. The resul-

tant 600m² 'shed' has 220mm solid concrete block walls, a 150mm thick concrete roof and no windows – just two steel doors further protected by a lockable steel barrier to prevent ramming. The concrete roof protects an area which is often left vulnerable on many standard buildings which are otherwise secure, while the substantial steel bar in front of the doors pre-empts ramming which often jams steel doors even if it doesn't effect entry. Windows were felt to be areas of great vulnerability – hence their

EQUIPMENT CHEMICALS

**chemicals, tools, fuel
equipment, adhesives
paint, solvents
KEEP THEM SAFE**



**KEEP THEM
SITESAFE**

*Cleveland Sitesafe Ltd, Park Farm, Dunsdale,
Guisborough, Cleveland TS146RQ
Tel. 0642 475009 Fax. 0642 471036
Please contact us for details of the full range of
Sitesafe Storage Units*

EQUIPMENT CHEMICALS

AD
REF
56

A secure storage unit in disguise,
from Groundhog



omission. Swinton has gone further than this and has a full intruder alarm system linked direct to the police.

With the vulnerability of all equipment the start for all security must be consideration of fencing the greenkeepers sheds. A good lockable compound will deter casual vandals, locks bought with multiple keys allow authorised access. An electric fence – as used to contain livestock – is also a useful deterrent, but will need regular maintenance and very visible public warning.

The buildings themselves need to be secure, those 'sheds' normally found on the golf course offer little resistance to the thief. Doors and windows are obvious vulnerable points but reinforcing them may not be worthwhile if walls and roof are only timber or corrugated steel and asbestos. As a result the more effective answer

may be to build or buy a secure building or container and leave the shed unlocked – then no damage is done trying to get in. Many golf clubs have bought old shipping containers and use these for their vulnerable equipment. The problems with shipping containers are that firstly they are unsightly, secondly they are not spacious enough to put tractors and larger mowers in, and thirdly they are liable to be highly corroded, or even full of holes. Purpose made secure storage is

available from a number of companies such as Groundhog, nor is it excessively expensive. This company has recently introduced a half round timber cladding to the range and added a pitched tiled roof which makes the unit visually acceptable, although this adds significantly to the cost because each timber is screwed to the steel shell. Smaller containers may also be useful around the course for temporary tool storage, while lockable boxes to fit pick-up truck, tractor linkage or turf maintenance vehicle may ensure the safety of small hand tools, chemicals and other items which may 'walk' when a greenkeeper's back is turned.

Tractor trailers are not usually at risk, however smaller trailers such as those designed for ATVs and road use are, so too are major items such as mini excavators and similar plant. These can be protected by diverse means, the simplest with trailers being either a wheel clamp or locking the hitch. A better method however is to concrete in a hitching post and lock to this. Tractors are at risk to joy riders even if they haven't the glamour of an XR2. Tractors deserve a little more immobilising than just locking and removing the key – many car immobilisers work. In bad areas if the tractor is not actually removed it will lose 'bits' or have dirt put in the fuel – perhaps in spite because it can't be driven. Batteries are saleable.

Lighting can provide one of the most useful deterrents providing there are likely to be people around to spot a potential intruder or vandal, – there is no point in illuminating buildings just for their benefit! PIR – or passive infra-red, or better, dual technology systems, which automatically switch lights on is particularly effective because it alerts

people, however it can be prone to false alarms and failures if bought cheap and not carefully sited and set-up. Is it realistic to expect a £20 domestic PIR light from a DIY shop to protect £100,000 of equipment? It may be more effective to erect the lights on a tall standard so that it can be seen at greater distances, such lights are also useful to light the area for working in winter.

Of course such lighting is useless for security when the buildings are hidden or remote, as are audible alarms, however PIR and other more sophisticated forms of intruder detection are available to link by radio to a remote alarm in the clubhouse or even to page someone. Proprietary systems can be linked to a private security company, to the head greenkeeper or to the police, however because of the inevitable delay from alarm to response most are of limited use to a golf club. Video surveillance and recording seems to be proving remarkably effective in many places.

The crime prevention officer of the local police is one useful and free source of advice. Also there are a growing number of specialist security equipment suppliers happy to give advice, but don't expect it to be unbiased, after all they are after a sale. Some insurance companies also have advice to give, although this may be negative, perhaps suggesting that items at risk won't be covered if not secured or protected, or only at a higher premium or excess.

The police recommend making equipment identifiable. One idea may be to paint mowers and greens equipment in day-glo colours – they would help the player to see them while making them less valuable to acquire illegally and sell on. Stamping the postcode on the chassis is another simple identification ploy.

GROUND
Secure Equipment **Hog**

CENTURY WORKS • PENIEL GREEN ROAD
PENIEL GREEN • LLANSAMLET • SWANSEA SA7 9BZ
TEL: 0792 310101 • FAX 0792 310102

Buyers' Guide

The most cost-effective way of reaching readers of Greenkeeper International. Simply ring Bill Lynch on 091 413 7218, Carol Dutton or Louise Lunn on 0347 838581 and ask about an alphabetical category listing: the cost starts from the equivalent of under £25 per month.

Aerators

AERATORS

Problems with dirty water or algae bloom? Let Otterbine clean-up your lakes and ponds.

The world leader in water quality management.

Available from leading irrigation companies. Full details from:

S.G.I. Sales

6 Stuart Road,
Market Harborough LE16 9PQ
Tel: 0858 463153 ♦ Fax: 0858 410085

Agromony

PSD AGRONOMY LTD

A COMPLETE AGRONOMIC CONSULTANCY SERVICE FOR THE GOLF CLUB and GREENKEEPER

- Contract Management of Extensions and New Courses
- Site Management and Problem Diagnosis on Existing Courses
- Technical Advice and Support all year round
- Soil and Turf Analysis



For further information contact:
David Stansfield or John Hacker
42 Garstang Road, Preston PR1 1NA
Tel: (0772) 884450 Fax: 884445

All Weather Walkways

ALL WEATHER WALKWAYS

Limit turf damage with a natural woodfibre walkway.

- Free draining
- Soft and quiet tread
- Engineered particle size
- Blends into the landscape
- Expert construction advice

Dormit

For further information please call us on Cirencester (0285) 860781/2

Animal Repellents

FAIRWAYS

DISCREET CONTROL

CONSULTANCY ENVIRONMENTAL SERVICE & TRAINING

Rabbits & Moles...
Our problem!

SPRINGER HOUSE • WINDMILL LANE
KEMBLE • CIRENCESTER GLOS • GL7 6AN

TEL: 0285 770919
FAX: 0285 770910

SCUTTLE® ANIMAL REPELLENT

Up to ten weeks protection from browsing by rabbits from a single, effective spray application.

For product leaflet and the name of your nearest distributor, call

0734 510033

Fax: 0734 510044

© Fine Agrochemicals Ltd., Worcester WR2 5AA

YOU'RE ONTO A WINNER WITH GREENKEEPER INTERNATIONAL

Find three tiny £50 notes - win a real one, for free!

HERE WE GO with another chance to WIN £50 with Greenkeeper International!

All you have to do is take a look at the £50 note symbol above. Now look through the ads in the Buyers' Guide section and spot THREE of them - they've been reduced in size, but they're there, somewhere!

Write down the names of the three ads where the £50 notes are located and send your entries on a postcard to: Note the Notes Competition, BIGGA, Aldwark Manor, Aldwark, Alne, York, North Yorkshire YO6 2NF, to be received by first post Friday, October 28, 1994. The first correct entry drawn after that date will win £50. It could be YOU! Enter today - and Note the Notes!

Judges' decision is final. Not open to BIGGA staff.

★ The lucky winner from a bulging postbag last month was Mr R Hughes, course manager at Forrester Park Golf Club, Essex. Mr Hughes scoops the £50 cash prize. Will it be your turn for success next month? Get searching - note the notes and be a winner!

Arboriculture



- Tree Spade Hire
 - Semi Mature Trees supplied
 - Mulches supplied
- Ring for colour brochures

Iver, Bucks, SLO 9LA
Tel 0753 652022
Fax 0753 653007

Architects



JONATHAN GAUNT

B.A. (Hons.) Dip L.A.
GOLF COURSE ARCHITECT
From feasibility studies to complete design projects including contract supervision

40C NORWICH ROAD FOREST GATE
LONDON E7 9JH
TEL: 081 555 8577 FAX: 081 519 6163

Associate of the British Institute of Golf Course Architects

Artificial Grass



Worting House
Basingstoke
Hants RG23 8PY
Tel: 0256 811014

- COURSE CONSTRUCTION •
- SYNTHETIC GRASS TEES •
- WINTER GREENS •
- ADVENTURE GOLF •



UNIT 25, COWLING MILL
COWLING BROW
CHORLEY
LANCASHIRE PR6 0QG

Tel: 0257 269983/269069
Fax: 0257 261064

- VERDE TEE FRAME
Steel platform, woven grass top.
- VERDE WINTER TEE
Generous size, self-install kit.
- VERDE DRIVING MATS
Top quality - Long Life - Best Prices.
- ARTIFICIAL GRASSES
- DRIVING BAYS AND NETS
For club and home use.

TWENTY YEARS EXPERIENCE SUPPLYING THE BEST SURFACES AT COMPETITIVE PRICES.
Please call for samples & information

Bacteria



GREEN CIRCLE

The biological way to:

- ✓ Degrade Thatch
- ✓ Increase Root Depth
- ✓ Promote Fine Grasses
- ✓ Reduce Fertiliser Needs
- ✓ Combat Disease

Tel: England/Wales: 081 669 0011
Scotland 0764 683250
Ireland 045 61389

Bark



PATHFORM™ Hardwood Chips

Ring for samples and colour brochure

Iver, Bucks, SLO 9LA
Tel 0753 652022
Fax 0753 653007

M & B SUPPLIES

Walkway Chips,
Softwood Bark - All Grades,
Fertilizers, Composts, Peat,
Horticultural Sundries

Baths Road, Longton,
Stoke-on-Trent
Staffordshire. ST3 2JQ

Telephone 0782 593233

Bridges



TOTAL TIMBER ENGINEERING

HICKSON LEISURE DEVELOPMENTS

BRIDGES

Pedestrian and Vehicular

REVENMENTS

SHEET PILING

SHELTERS

HICKSON LEISURE DEVELOPMENTS
NEW POTTER GRANGE ROAD, GOOLE
NORTH HUMBERSIDE DN14 6XF
telephone (0405) 766060 fax (0405) 768622



BUSINESSES

Don't miss your chance to take part in the SHOW OF THE YEAR.
Call Louise Lunn at BIGGA on 0347 838581 for an information pack!

Buildings



**Club Houses
Driving Range Buildings**

GREENKEEPERS STORES DESIGNED TO INCLUDE:

As Required

- Machinery Storage • Maintenance Workshops
- Fertiliser and Weedkiller Storage
- Offices and Staff Mess Rooms
- Any other specialist usages

FREE initial designs and costings
PLEASE CONTACT

Ivan J Cooper Ltd
Steel Framed Buildings
Moorside Works, Cauldon Lowe,
Stoke-on-Trent ST10 3ET
Tel: 0538 702282 Fax: 0538 702662

Cockleshells



**PHOENIX
SPORTS TURF
SERVICES**

COCKLESHELLS

Delivered Nationwide

"SUPPLIERS OF QUALITY FINE TURF,
CONSTRUCTION SOILS, ROOT ZONES &
DRESSINGS"

Tel: 0229 468001 Fax: 0229 468002

20 Nelson Street, Dalton-in-Furness,
Cumbria LA15 8AF

Chemical Disposal

**CHEMICAL & EMPTY
CONTAINER DISPOSAL
A PROBLEM?**

ENVIROGREEN offer a Specialist
Pesticide Disposal Service for both
full and empty Container disposal.
Also Record Books, Signs, Chemical
& Fuel Stores and Protective Clothing

ENVIROGREEN Limited
The Maxwell Hart Building,
612 Reading Road, Winnersh,
Wokingham, Berkshire RG11 5HF
Registration No: BRL 05342
Tel: 0345 125398

Construction



**CONTACT THE
PROFESSIONALS**

Tim Banks, Secretary, BAGCC,
Angel Court, Dairy Yard, High Street,
Market Harborough LE16 7NL.

Tel: 0858 464346

**Michael
Lowe
& Associates**



GOLF COURSE DESIGN,
CONSTRUCTION & CONSULTANCY

Design only, complete construction or
any stage in between, including
Drainage.

Pro-Shop, 72 Bryniau Road,
Llandudno, Gwynedd
Tel: (0492) 876878 Fax: (0492) 872420

**G.O.O.L.F
LANDSCAPES
LIMITED**

ASHWELLS ROAD, BENTLEY
BRENTWOOD, ESSEX CM15 9SR

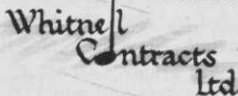
TEL: (0277) 373720
FAX: (0277) 374834



**25-27 January 1995,
Harrogate, Yorkshire**
Details from Louise Lunn
at BIGGA on 0347 838581

Whitnell Contracts Ltd
Golf Course Constructors

Woodlands, Ellis Road
Boxted, Colchester
Essex CO4 5RN
Tel: (0206) 272834
Fax: (0206) 272104
Mobile: 0860 421074



**C.J. Collins
Construction**

Golf Course Contractors

Specialists in complete
construction, or green,
tee, bunker and
drainage refurbishments



Burgess Hill, West Sussex

Tel: 0444 242993
Fax: 0444 247318

Consultancy

**David Hemstock
Associates**

Consultants on:

- Golf Course upgrading
- New Course development
- Specialists in irrigation, drainage, contour and environmental surveys.

Suite 4d, East Mill, Bridgefoot, Belper,
Derbyshire DE5 1XF.
Tel: 0773 827115 Fax: 0773 821083
Mobile: 0850 744957

IMPERIAL LANDSCAPES
Fine Turf & Golf Course Consultants
♦ Tel: (0234) 851651 ♦ (0908) 615680
♦ Mobile: (0836) 767940
Moreton Lodge, Moorland,
Bromham, Beds MK43 8LU

Course Accessories

**WHY DOES
TACIT'S
FLAGPOLE LAST
TWICE AS
LONG?**



THE TOP
SWIVELS

THE BOTTOM
DOESN'T

**EAGLES, BIRDIES,
FALDOS**

Tacit's upright flagpoles
could have the same effect
with your members.

TACIT - Suppliers of
Holecups, Flagpoles and
equipment for
European Ryder Cup 1993
The Belfry.

TACIT

Manufacturers of quality
Golf Course Accessories

Tel: 0788 568818
Fax: 0788 537485

Drainage

**SLEATH & SON
SPORTSTURF DRAINAGE**

Full range of modern equipment providing
UK and European service
Contact Geoff Sleath
Tel: (0709) 862109 Fax: (0709) 862075

**AGRIPOWER
LTD.**

Construction
Drainage
Stone Picking
Verti-Draining

Tel: (01494) 866776



**WHITE HORSE
CONTRACTORS LTD
SPORTSTURF**
OXFORD (0865) 736272



**Golf Courses
and
Sportsfields**
★ Drainage
★ Construction
★ Water Mains
★ Fin Drains
★ Approved sand,
gravel and pipe
supplied

MEIKLEM

Sunnyside, Blairadam, by Kelty,
Fife KY4 0HY
Tel: (0383) 830217
Fax: (0383) 831771

Driving Range Equipment

RANGE SERVANT UK Ltd.

A NEW UK subsidiary of
Range Servant of Sweden AB,
Europe's market leader for

GOLF RANGE EQUIPMENT

Ball Dispensers, Collectors and Washers.
Play Off Mats and Winter Tee Mats.

AUTOMATIC TEE-UP UNIT

Phone/Fax 0442 834242
Mobile 0585 468624
4 Arden Close, Bovingdon HP3 0QS

DRIVING RANGE SUPPLIES

EASY PICKER
Europe Ltd

**GOLF DRIVING
RANGE EQUIPMENT**

Upgrade your practice area using the
world's most popular range ball picker.
Also suppliers of ball dispensers, ball
washers, top quality range mats and
winter tees.

Tel: 0508 528828
Fax: 0508 520909

Environmental Products

*For natural and
environmental
solutions to get
you growing,
contact:*

farmura

Stone Hill, Egerton, Ashford,
Kent TN27 9DU
Tel: 0233 756241 Fax: 0233 756419

Fertilisers



The top organic fertiliser for tees,
fairways and ground under repair

For more information contact
J Russell (Ayr)
Tel/Fax: 01292 267601



Sierrablen Turfmix

Controlled Release Fertilizer
with fast start portion

A single application assures
feeding for the whole
growing season.

High Quality. Proven in Practice

Grace-Sierra UK Ltd

High technology in plant nutrition
61 Loughborough Road, West Bridgford,
Nottingham NG2 7LA

Tel: 0602 455100 • Fax: 0602 455311

Golf Course Supplies

STRIKE TOP TURF

Merchants to the sports and leisure trade

The complete range under one banner - if you require it, we will have it
Fertilisers - all grades and types, loams and dressings, pesticides, top dressing; Rootzone, cockleshell; Horticultural and agricultural tools, golf course equipment, work clothing and much, much more!
Call 061 456 7109 or mobile 0831 639798
for up to date list and quote
40 Offerton Road, Hazel Grove, Stockport, Cheshire SK7 4NL

Martin Brothers

TOP QUALITY, TOP SERVICE

Distributors of

Cheshire Quality Top Dressings, Root Zones and Tee Mixture

MoneyStone Bunker Sand Britain's best, head and shoulders above the rest

Par-Link Red Pathway Gravel ideal link from Green to Tee, any course anywhere

24hr ACTION LINE
0625 584571

Tell the industry of your products and services, through an advertisement in greenkeeping's top magazine GREENKEEPER INTERNATIONAL

Grass Cutting Equipment

SAVE MONEY!

EX DEMONSTRATION AND TOP QUALITY REMANUFACTURED GOLF COURSE MACHINERY AVAILABLE FROM STOCK

TORO JACOBSEN
RANSOMES BEAVER
RYAN HAYTER
sisis CUSHMAN ROYER
VERTI-DRAIN
Loyds ISEKI KUBOTA

UK & EXPORT DELIVERY ARRANGED
Phone for a full catalogue NOW
GREENSWARD
ENGINEERING COMPANY
Manor Farm, Otley Road, Adel, Leeds LS16 7AL, England
Tel: (0532) 676000

Grass Seed

Turf Management Systems

for
PRE-GERMINATED GRASS SEED
"LIQUID SOD" SPRAY ON GRASS
TOP DRESSINGS
GRASS SEED
FERTILISERS
HERBICIDES
HORTICULTURAL PRODUCTS
and

All Turfcare Materials

Dromenagh Farm,
Sevenhills Road, Iver Heath,
Bucks SL0 0PA
Tel: 0895 834411
Fax: 0895 834892

GERSON Grass Seed

QUALITY AMENITY
GRASS SEEDS
& WILD FLOWERS

119 Holloway Head,
Birmingham B1 1QP
Tel: 021 631 2303
Fax: 021 633 0281

PROBLEM AREAS? Scan-Seeding is the answer

Our unique, mulch-free hydroseeding system will solve your seeding problems on difficult areas such as banks, slopes or where soil erosion may occur.

The unique Scan-Binder soil stabiliser ensures that the seed stays in position until germination and establishment.

Call us now for more details and a quotation on
0372 749909

SCAN-SEED

(U.K.) LIMITED
Franchises available

Irrigation

HORTECH SYSTEMS LTD.

TURF IRRIGATION SPECIALISTS

We offer full design, Installation and After Sales Service
Hortech Systems Ltd,
Hallgate, Holbeach,
Spalding, Lincs PE12 7LG
Tel: 0406 426513

T. & G. TURF IRRIGATION SERVICES

38 Halfpenny Lane, Knaresborough,
North Yorkshire HG5 0NS
Tel & Fax: (0423) 864963
Full member of B.T.L.I.A.

Making sure your Golf Irrigation system isn't a handicap.

Contact: S. Penny
109 Chapel Road, Hesketh Bank, Preston,
Lancs., PR4 6RU Tel: (0772) 813571
Southern Office: N. Ford Tel: (0708) 761717

AQUAPLAST
Putting water in its place

Rain Rotor®

The impact sprinkler for tees, greens and fairways made in Britain by
CRESWELL ENGINEERING LTD
340/342 Cherrywood Road,
Birmingham B9 4UU
Tel: 021 772 2512
Fax: 021 773 9548

Watermation

Manufacturers, designers and installers of
GOLF COURSE IRRIGATION FOR 24 YEARS
Tongham Road, Aldershot,
Hants GU12 4AA
Tel: 0252 336838
Fax: 0252 336808

A National Irrigation Service

Free consultation and design service

Suppliers of quality products for all types of irrigation

Local installation and maintenance throughout the UK

Specialists in the refurbishment of existing irrigation systems

For further information telephone 0460 241939

OCMIS

Design and service you can trust

PAR 4 (IRRIGATION) LTD

Installation Sales & Service
N.E. England, Yorkshire, N. Lincs, N. Derbys, N. & S. Humber-side
Contact: E.B. & L. Simms
Tel: (0765) 602175 Fax: (0765) 603488
Par 4, Unit 18, Camphill Close,
Dallamires Lane, Ripon,
N. Yorks HG4 1TT

MIDLAND IRRIGATION

AN INDEPENDENT IRRIGATION COMPANY
2 Fairedene Way, Great Barr,
Birmingham B43 5JS
Tel: 021 358 1246
Fax: 021 357 6789
DESIGN • SUPPLY
INSTALLATION • SERVICE
Full member of B.T.L.I.A.

B SERVICE **TORO IRRIGATION**
BELL TURF & IRRIGATION SERVICES
East Midlands Area
Installation, Sales and Service
Everton, Doncaster, DN10 5DR
Tel: (0777) 817410

Hunter
The Irrigation Innovators
Gear driven sprinklers including the new golf range available from
S.G.I. Sales
6 Stuart Road,
Market Harborough,
Leics LE16 9PQ
Tel: 0858 463153
Fax: 0858 410085
NOW YOU HAVE A CHOICE!

BRITISH OVERHEAD IRRIGATION LIMITED

Tel: (01932) 788301
Fax: (01932) 780437

INDEPENDENT CONTRACTORS FOR SPORTS TURF IRRIGATION SYSTEMS, UPDATES AND COMPLETE PROJECTS
BEST BUY B.O.I.L.

EXPERIENCE - EXPERTISE
CARE - SERVICE
since 1923
Founder Member BTLIA

Automatic Watering Systems for Sports and Leisure Grounds
• Designed • Supplied • Installed
GLEN HEAT & IRRIGATION
Pinchbeck, Spalding, Lincs.
Tel: (0775) 722327
Fax: (0775) 725444

Lake Construction



GT GROUP
LEAST COST WATERPROOFING OF LAKES AND RESERVOIRS
- using lining membranes and associated geosynthetic materials.
• Comprehensive service available to owners/architects/consultants and contractors.
GT GROUP, Nags Corner, Wiston Road, Nayland, COLCHESTER CO6 4LT
For technical and sales enquiries
Tel: (0206) 262676
Fax: (0206) 262998

Machinery Repairs

LAMP

HORTICULTURAL ENGINEERS
Service and repairs of all makes of professional grass cutting equipment for the sports and leisure industry
Contact Andrew or Rosemary
Tel/Fax: 0827 284415
Unit 7, Roman Park, Tame Valley Industrial Estate, Wilnecote, Tamworth, Staffs B77 5DQ

Mower Spares

MOWER ACCESSORIES LTD

Manufacturers of high quality lawnmower blades and cylinders. Suppliers of spares and accessories.

65 Forncett Street
Sheffield S4

Tel: 0742 765825
Fax: 0742 765855

Netting



- ★ Germination Sheets
- ★ Frost Protection Sheets
- ★ Target Nets
- ★ Perimeter Netting
- ★ Ball Stop Netting
- ★ Rain Covers
- ★ Mobile and Static Nets

Available from all good distributors
Longbrook House, Ashton Vale
Road, Bristol BS3 2HA
Tel: 0272 669684

pH Adjustment

High pH?

Liquid Sulphur

is a unique source of flowable sulphur for use as a nutrient additive or pH adjuster.

Available exclusively from

Liquid Sod
and its distributors.

Ring 0963 251129 today for more information and your own FREE pH adjuster chart.

LIQUID SOD, LINDEN VIEW,
REDWING ROAD, MILBORNE PORT,
SHERBORNE, DORSET, DT9 5DB

Railway Sleepers



10" x 5" x 8 1/2"
FROM £6 EACH
Hundreds of uses in:
◆ Golf Courses ◆ Civil Engineering
◆ Farming ◆ Landscape Gardening ◆ Fish Farms
◆ Garden Centres

ASHWELL MAKE IT EASY
◆ Sale, hire or buyback ◆ Choice of new or used
◆ Generous bulk discount ◆ Cutting service
25p ◆ Sale or return ◆ Delivery

ASHWELL

Tel: 0375 892576 Fax: 0375 891736
Unit G, Criton Ind. Est., Stanford Rd, Orsett, Essex RM16 3DH

RAILWAY SLEEPERS
8' 6" x 10" x 5"

CROSSING TIMBERS
12" x 6" up to 16' long
Price quoted for number required

TELEGRAPH POLES
NEW AND SECONDHAND

Tel (0233) 625121 or 620277

Faggs Fleet, Whitfield
Road, Ashford, Kent

Sand/Silica Sand



Complete range of damp and dried graded silica sands for all purposes.

Contact John Deavin at
Eastern Way Works,
Eastern Way, Heath & Reach,
Leighton Buzzard,
Beds LU7 9LF
Tel: (0525) 237911
Fax: (0525) 237991

Tell the industry of your products and services, through an advertisement in greenkeeping's top magazine GREENKEEPER INTERNATIONAL

Drinkwater Saby Ltd

(EBENEZER MEARS)

KINGSLEY FINE WASHED SAND
for Tees · Greens · Bunkers
and drainage sands and shingles

Wintersells Road, Byfleet, KT14 7AZ

0932 345616

ARC BUCKLAND INDUSTRIAL
Southern MINERALS

Sand and Silica Company
COMPLETE RANGE OF
HORTICULTURAL SANDS

Contact Lynda Jordan
Buckland Sand & Silica Co.
Reigate Heath, Reigate,
Surrey RH2 9RG
Tel: (0737) 240151

GRUNDON

**NOW SPREADING
IN YOUR AREA**

Top Dressing
Bunker Sand
Root Zone
Tees Dressing
All Aggregates
Path Gravels
Cockleshell

**NEW HOTLINE-NUMBER:
Contact Gordon
on 0367 244078**

TOP GRADE TOP DRESSINGS

Lime free dried & washed sands
Lime free moist & washed sands
Bulk 24 hour delivery service

ARNOLD
SANDS FOR INDUSTRY

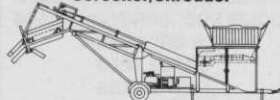
Arnold Sands Ltd
PO Box 542
Leighton Buzzard
Bedfordshire LU7 8FH
Tel: (0582) 477322
Fax: (0582) 661476

Screeners/Shredders

GRADE ALL

GRADEALL INTERNATIONAL LIMITED

Manufacturers of the SS100
Screener/Shredder



9 Farlough Road, Dungannon,
Northern Ireland BT71 4DT

Tel: 08687 40484 · Fax: 08687 48823

Seats

Gloster

FINE TEAK FURNITURE



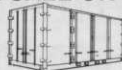
Seats, tables, chairs,
benches,
planters and litterbins made
from plantation
grown teak. Listed in
the Good Wood Guide.

Send for brochure

D-Scan (UK) Ltd Concorde Road,
Patchway, Bristol BS12 5TB
Tel: 0272 315335 Fax: 0272 315334

Secure Storage

SECURE STEEL LOCK-UPS
(Ex Shipping Containers)
FOR SALE OR HIRE



Delivered to your golf club or premises by self
unloading lorries within 24 hours (Mainland UK)
10' x 8', 20' x 8' and 40' x 8' insulated or uninsulated.

IF YOU NEED ECONOMIC SECURE STORAGE

RING NOW FOR PROMPT
EFFICIENT SERVICE

LAWRENCE CONTAINERS

Tel: 0622 820308
Fax: 0622 820300

Tee Mats

LINKS LEISURE

PRO-TEE ALL-WEATHER
GOLF MAT

Robust,
durable
GRC base
with three
replaceable
artificial turf
sections.

The ideal
substitute
for the
natural
grass tee.



Tel 0948 663002

or Fax 0948

666381 for details



- Suppliers of the Dunlop Winter Tee & Practice Mat
- Golf Course Furniture
- Driving Range & Practice Ground Equipment

Tel: 01704 541055
Fax: 01704 536594

TEEMASTER

BY PRO-AM GOLF
SERVICES LTD

YOUR WINTER AND
PRACTICE TEE SPECIALISTS

Tel: (0446) 700130/733063

Pro-Am Golf Services Ltd.,
Unit 20, Atlantic Trading Estate,
Barry, South Glam., CF63 6RF

TUFTURF

ARTIFICIAL GRASS TEE MATS,
DRIVING RANGE MATS AND
PUTTING SURFACES FROM

CARPETITION LTD

14 Kaffir Road, Edgerton,
Huddersfield HD2 2AN

Tel: (0484) 428777 Fax: (0484) 423251

Tree Planting

Tree Planting Service
Large Grants Available

Eamonn Wall & Co.
Woodland Design and Management
22 West Burnside, Dollar

Tel: 0259 743212



**Eastcote
Nurseries
(Solihull) Ltd**

- ★ Tree Spade hire
- ★ Tree moving
- ★ Semi mature trees

Nationwide service

Hampton Road, Barston, Solihull,
West Midlands B92 0JL

Tel: 0675 442033

Fax: 0675 442324

Trenchers

TRENCHERS FOR HIRE

Width: 15cm-30cm
Depth: up to 122cm

Trenchex Plant Sales

Tel: 0889 565155 Fax: 0889 563140

Turf

**EXCELLENCE
THROUGH
EXPERIENCE**

Shelford

TURF FARMS

Beech Tree Farm, Shepreth Road,
Foston, Cambridge

Tel: (0223) 871814. Fax: (0223) 872354



Growers of consistent quality turf in
either big or small rolls for landscapers,
amenity users and golf courses

Tel: 0728 688 984
Fax: 0728 688 949

Fir Tree Farm, Blaxhall, Woodbridge,
Suffolk IP12 2DX



TILLERS

Growers of high quality turf supplied nationwide in standard and big rolls. All turf grown on sandy, stone-free soil.

For more information, contact
Tim Fell at:

Tillers Turf Company Ltd
Castlethorpe, Brigg,
South Humberside DN20 9LG

Tel: 0652 650555
Fax: 0652 650064

INTURF

GROWERS AND SUPPLIERS OF HIGH QUALITY CULTIVATED TURF FOR ALL APPLICATIONS AND APPOINTED OFFICIAL TURF PRODUCERS TO WEMBLEY STADIUM

Please contact Head Office for more information:

THE INTURF GROUP

Regent Street • Pocklington • York YO4 2QN
Telephone 0759 304101 • Fax 0759 305229



Grasslands

Specialist Seed Grown Turf Producers COVERING THE SOUTH
Grasslands Turf Farm, Ashford Road,
New Romney, Kent TN28 8TH
Tel/Fax: (0797) 367130

TURF GROWN TO YOUR SEED SPECIFICATION

or from our stock
ALL GROWN IN STERILE COMPOST

Supplied nationwide

GREENKEEPER LTD,
Shelford Manor, Shelford,
Nottingham NG12 1ER

Tel/Fax: 0949 21144

Tip Top Turf.

Seed grown turf available in one sq yd or large 25 sq yd rolls with laying machines or service available.

Tel: 0908 270701 • Fax: 0908 374889

Turf Dressings

FEN TURF DRESSINGS LTD

for Fendress Top Dressing

- Fendress Superfine
- Economy Dressing
- Rootzone Mixes
- Screened Fensoil • Screened Peat
- Screened Loam • Kiln Dried Sand
- Bunker Sands



Tel: (0858) 464346/433003
Fax: (0858) 434734

GREENBASE ECOLOGICAL LIMITED

The ProBase range of Products for Turf Dressings and Construction materials. Lightweight. User friendly and economical

Tel: 0427 811738 • Fax: 0427 810405

Rufford

TOP-DRESS SUPPLIES

Britain's No. 1 for
QUALITY • SERVICE •
SHEER VALUE FOR MONEY

Fairway House, South Stage, Broadway,
Salford Quays, Manchester M5 2UO
Tel: 061 877 8550 Fax: 061 877 8554



BAILEY'S OF NORFOLK

supply

Professional Turf Dressings for the Profession

GOLF TURF DRESSINGS

Approved formulations for use in Construction and on the finest greens, tees and fairways.

SAND

All requirements catered for including lime free. Kiln dried sands available.

SCREENED TOP SOIL

Including the finest Black Fenland Soil. Screened loams to customers' individual specifications.

We also produce and supply root zone mix and always have vast stocks of cockle shells for immediate delivery

DELIVERIES NATIONWIDE

BAILEY'S OF NORFOLK

Brick Kiln Road, Hevingham,

Norwich, Norfolk NR10 5NL

Tel: 0603 754607

Mobile: 0860 661603

BL BOUGHTON LOAM LTD.

For
TURF DRESSINGS
ROOT ZONE MIXES
SCREENED TOP SOILS
BUNKER SANDS
HORTICULTURAL
COMPOSTS

Telford Way, Kettering,
Northants

Tel: 0536 510515

Turf Maintenance



PROFESSIONAL TURF MAINTENANCE AND RENOVATION EQUIPMENT AVAILABLE FOR HIRE

J. WOOD & SON

(BILSDALE PLOUGHS) LTD

Tel: (0377) 253313 Fax: (0377) 257465

DRIFFIELD • RYEDALE • YORK

Tyres

FLOTATION TURF TYRES

- Wide Flat Threads •
- New & Used Custom Wheels •
- Bargain Prices •

ROTOTYRE LTD

Graveyard Lane, Ormskirk, Lancs

Tel: 0695 421100 Fax: 0695 424265

Sam Moreton & Sons TURF TYRE

Turf Tyres of all makes to fit any machine. Wheels made to customer requirements.

Enquiries 0926 632269

Fax 0926 632023

Orders 0926 613737

Nationwide delivery service

Vertidrain Hire

MIDLAND TURF AERATING SERVICE



- Verti-Draining • Hollow Coring with Ryan GA30
- Core Collector • Golf Tee Construction
- Bunker Alterations
- Over-Seeder

Tractor Hire • Competitive Prices • Professional nationwide service.

Tel/Fax 0922 417567

Charles Frost



VERTIDRAIN Hire Co

VERTIDRAIN AND HOLLOW CORING MACHINES AVAILABLE FOR HIRE

Contact: Peter Holmes, 10 Carson Road, Gainsborough, Lincs DN21 2RE

Tel: 0427 613035

Mobile: 0831 359394

PARKER HART

Verti-draining, hollow coring, conventional and hydro-seeding throughout the South East

Complete range of turfcare machinery available for hire

Competitive rates
Reliable equipment
Experienced operators

Call Karen or Anne

081 337 7791

HERONFIELD HIRE

(Solihull)

Vertidrain, Moore Sportsfield Over-Seeders, Verti Over-Seeder for Greens & Tees, Toro Aerators, Case Trenchers & Sportsfield Slitters etc.

Contact: Doug or Ron Johnson

Tel: (0564) 772597

Fax available

Richard Campy

For vertidrain, hollow coring, scarifying, and overseeding requirements.

1.5m and 2.5m vertidrain

Greencare Corers

Charterhouse Vertiseed

Marton Hall Lane, Marton,

Macclesfield.

Tel: 0260 224568

Fax: 0260 224791



ROSS OLIVER SPORTS GROUND CONSTRUCTION AND MAINTENANCE

- VERTI-DRAIN for Greens and Sportsgrounds
- STONE PICKING • RYAN HOLLOW TYNER
- SAND SPREADERS • DIRECT DRILLS

Greystones, Trebudannon, Cornwall TR8 4LP
Tel: (0841) 540222 Fax: (0637) 881057

E&S SPORTSGROUND CONTRACTORS

We're No. 1 for Vertidrain, Hollow Tining and Core Collection

For competitive rates and a professional service, contact

RICHARD VEITCH
0734 795454

The Fairways, King Street Lane, Winnersh,
Wokingham, Berkshire RG11 5AX
Fax: 0734 795353

◆ Verti Drain Hire ◆ Hollow Coring
◆ Deep Spiking ◆ Tractor Hire
◆ Full range of Landscape Equipment

YORKSHIRE'S ONLY AGENT FOR WIEDENMANN TERRA SPIKE

SPEN GROUND CARE SERVICES
Unit 7, Valley Road, Liversedge,
West Yorkshire WF15 6JY
0924 401522 • 0836 722080

SEWARD TURF MAINTENANCE

CONTACT THE PROFESSIONALS
Ten years experience using only the best

2 greens verti-drains
(18 greens in 2 days)

Half-inch tines at 2x2 spacing

Fairway verti-drain

Coremaster complete with collector

Fairway overseeder

Contact Michael Seward

York (0904) 765949 night or day

WORTH DRAINING

VERTIDRAINING and HOLLOW CORING HIRE with the RYAN G.A. 30

Contact Peter Bloodworth

WORTH DRAINING

Cornecks Farm, Irnham, Grantham,
Lincolnshire Tel/Fax: (0476) 550266

Weed Killing

WEED FREE
(BRACKNELL)

Professional Weed Killing & Associated Turf Services

MIKE SEATON F.Inst.G(Dip)

Tel: (0344) 481011
Fax: (0344) 300052
Mobile: (0850) 300104

You're at the end of the Buyers' Guide section — if you haven't found the ads with the 3 symbols in yet, TRY AGAIN: IT COULD BE WORTH

£50 TO YOU!

Classified

Machinery For Sale

G E Adamson Grass Machinery

Ransomes 3 set Magna or sports trailed – new cylinders£2500
 Ransomes 5 set Magna or sports trailed – new cylinders£4175
 Ransomes Super Certes 51 as new c/w comb and wheels£1250
 Ransomes 180D 2 cyl Diesel fixed or floating heads£3950
 Compact Tractors and Machinery
 All prices inclusive of transport but subject to VAT.
Tel/Fax: 0995 640180

QUALITY REBUILT GROUND CARE MACHINERY

Iseki TU 318 Tractor 21hp, cab, creep gearbox, ex. demo: £5,995 +VAT

★ Gang Mowers ★ Triple Mowers
 ★ Cylinder Mowers ★ Aeration Equipment ★ Scarification & Collection Equipment ★ Nationwide Delivery, Export by Arrangement

EFG GARDEN MACHINERY
 Tenterfields Business Park,
 Luddendenfoot, Halifax HX2 6EJ.
 Tel: 0422 882165
 Fax: 0422 886014

1x T/C10 Twose Soil Conditioner: £500

x2 F3/222 Turf Irons SR-H3: £2,000 each

Contact The Head Greenkeeper 0865 390864

Drainage

DAISY D



- ▶ Special Drainage for Golf Courses
- ▶ Minimal surface disturbance
- ▶ Get your course back in use – FAST

Contact Daisy D Ltd
 West Mains,
 Gleneagles PH3 1PJ
 Tel: (0764) 682202

Purdys Grass Machinery

JACOBSEN DISTRIBUTORS
 Largest selection of professional used and reconditioned grass machinery in the Midlands

Aebi TT 77hp complete with flail and rotary.

Ransomes Hydr Mtd 5.

Ransomes 213 D's and 350 D's.

Trailled gangs. Howard Gem.

Kubota 8200 with set of 3 Hayter Wrap Round. Triples.

CONTACT

CHRIS BRYDEN
0777 704275

EVENINGS: 0602 209401



Breakwell's

Ransomes Commander DX3500 6 knife fixed headex-demo from £25,000

Ransomes Parkway 225 6 knife fixed headex-demo from £12,000

Ransomes GT Champion with verti-groom unitsex-demo from £5,000

Ransomes Fairway 300 .ex-demo from £19,500

Ransomes 180D 7 knife and boxesex-demo from £8,250

Ransomes T23D Rotary 60" rear dischargeex-demo from £8,000

Ransomes 180D fixed head units onlyex-demo from £875

Ransomes Greens Pro 56 transport wheelsnew from £1,800

Ryan GA30 Aeratorex-demo from £7,500

Ryan Matawaynew £1,900

Telephone: 021 733 3344

Trees

LARGE TREES IDEAL for GOLF COURSES

Many varieties
 Nursery seconds

From £3.00

Ramswood Nurseries

Tel: 0925 821002

Fax: 0925 821022

Job Shop

Senior Deputy/First Assistant Greenkeeper, fully qualified, with over 18 years experience, seeks similar position, good golfers (within 30 miles of London).

Experienced in spraying, irrigation, construction, all aspects of golf maintenance, modern and traditional.

Box No JS 9/94, BIGGA, Aldwark Manor, Aldwark, Ane, York YO6 2NF

Will you soon qualify?
 Are you living abroad but looking to move to the UK?
 Perhaps you just fancy a new job?

For only £19.95, this space could be working for YOU!

Job Shop

Call Carol or Louise on 0347 838581 for details of Greenkeeper International's new Job Shop feature

RECRUITMENT



Betchworth Park Golf Club

Due to the retirement of the Head Greenkeeper the club seeks to appoint from 1st April 1995 a

COURSE MANAGER

for an established H S Colt designed parkland course.

Applicants must possess recognised qualifications as well as an established career development in modern course management preferably gained on parkland courses.

The ability to lead and motivate an established team of greenstaff and organise work programmes, is essential.

A practical knowledge of modern greenkeeping machinery, current Health and Safety Regulations and budgetary control skills are required.

Remuneration is negotiable and will include accommodation.

Apply in confidence with full CV to:

**The Secretary, Betchworth Park Golf Club,
 Reigate Road, Dorking, Surrey RH4 1NZ**

Harpenden Golf Club

are committed to an ambitious five year plan to develop further this already prestigious course.

Required: an

EXPERIENCED SENIOR GREENKEEPER

To work directly with the Course Manager on the full range of both maintenance and development. This is a permanent, full-time post for an ambitious, forward-thinking professional.

Applicants must be suitably qualified and have a proven record in course and machinery maintenance.

Application forms can be obtained from:

**The General Manager, Harpenden Golf Club Ltd.,
 Hammonds End, Redbourn Lane, Harpenden, Herts AL5 2AX**

ROTHERHAM GOLF CLUB LTD

require a

HEAD GREENKEEPER

For an 18 hole parkland course. All applicants must hold City & Guilds Phase II and III and PA1 and PA2 Spraying Certificate. The ideal candidate must have the ability to lead and motivate the staff, have a sound knowledge of the use and maintenance of modern machinery, organise and carry out work programmes and maintain the course to its already high standard.

Accommodation is not available. Salary negotiable.

Apply in writing with full CV to:

**The Secretary, Rotherham Golf Club, Thrybergh Park,
 Rotherham, South Yorkshire S65 4NU**