

# MACHINERY MAINTENANCE

## Drives: Belts

Modern belt drives usually have an automatic tension system – where these are not fitted the belt will require checking regularly and adjusting accordingly. New belts tend to stretch so should be adjusted to the correct tension once they have bedded in. A slack belt is not only an inefficient source of power transference it also generates a great deal of heat and in some instances catches fire.

## Chains

Like belts there is generally some form of adjustment, for taking up any stretch. Where a cutting cylinder is chain-driven the adjuster will need to be slackened before setting the unit. Once the blades-to-bedknife are correct then the chain can be re-tensioned. A chain can vary throughout its length, so before locking everything up, check there is no point where it over-tightens when the driver is turned. If this does occur then it

will need re-adjusting.

From the safety aspect, all belt and chain guards should be securely in place and any damaged ones replaced.

## Cutting systems

These come in four basic forms: cylinder, rotary, reciprocating and flail.

## Cylinder Mowers

As this system is similar to the action of a pair of scissors it is vital that the cutting surfaces match. Whilst back-lapping a cylinder helps to maintain this, grinding achieves the ultimate. Once the cutting system has been ground, then regular checking and adjustment are standard practice. A majority of readers will be knowledgeable and competent in performing this operation. A badly set cylinder, apart from producing a poor finish is more vulnerable to damage from small foreign bodies such as grit,



Reckoned to be the "strongest small vehicle service lift in the industry", the Heftee from R+R (UK) Ltd, Huntingdon is rated at 2000lbs yet incorporates a low pressure restricted hydraulic system, to lower loads at a safe, controlled speed

stone or twigs, which can easily become jammed between the two surfaces.

## General

Most machines on the market have sealed units such as transmission systems and drives. Oil on the floor of the storage area is an indicator that an investigation is needed. Where hydraulic hoses are fitted, regularly inspect for signs of chaffing or leakages from

couplings and fittings.

Check all safety guards are not damaged and are secure, and make sure nuts and bolts are tight.

Throttle, clutch and brake cables will benefit from regular lubrication. Inspect the outer cover signs of any damage to which may impair the action of the inner cable.

Always be on the lookout for signs that could avert a problem.

THE IDEAL  
CHRISTMAS GIFT  
FOR GREENKEEPERS!



SPECIAL  
BIGGA PRICE

£79.95  
including  
Post &  
Packing

## NEW GOLF SUIT SPECIALLY DESIGNED FOR BIGGA

### Buy now for delivery before Christmas

The Hollinwell Suit by top manufacturers Walrus has been designed in association with BIGGA to provide a waterproof golf suit manufactured to BS3546 – so it's got to be good!

The suit has the Walrus Waterproof breathe 2 lining that is guaranteed waterproof and breathable for two years. The outer fabric used is tadel which has been teflon coated to give added comfort and protection against extreme conditions.

With features like zip pockets, protective storm flap, quilted collar and inside pocket, the suit is not only functional but extremely stylish. The BIGGA logo is featured on the arm and leg.

Take advantage of the special price and be confident that whatever the weather, Walrus is keeping BIGGA dry!



Please send me..... Hollinwell Golf Suit(s) at £79.95 each including postage/packing

Name: .....

Address: .....

.....Size required (tick):  M •  L •  XL •  XXL

Clip this coupon and post with your cheque made payable to BIGGA, to:

Hollinwell Golf Suit Offer, BIGGA, Aldwark Manor, Aldwark, Aine, York YO6 2NF

Your cheque will not be cashed until your order is despatched. Write the details on a separate sheet if you don't want to cut up your magazine

# 'A first class show... difficult to better but easy to spoil'

by Colin Hegarty of the Golf Research Group

BIGGA members don't want to lose what they've got at Harrogate. That is the clear message from a survey conducted by an independent research organisation, the Golf Research Group.

BIGGA commissioned me to survey members' wishes after the Association was approached by P&O Events with a proposal to combine the BTME with other grounds maintenance sectors and move the new 'unified' show to London's Olympia.

A two-page, 10-question survey was mailed to 1,474 members who are head greenkeepers. A covering letter asked them to consult with their staff, who are members, before replying. Twenty-five percent (370) of these questionnaires were returned within the deadline – considered by pollsters to be an excellent response rate.

The survey found that:

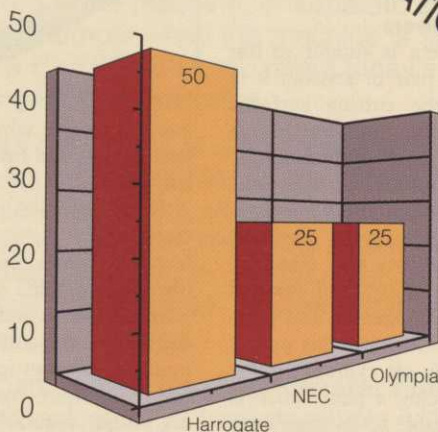
- ◆ 70% of BIGGA members have visited the BTME at Harrogate at least once;
- ◆ Half the membership are in favour of continuing the exhibition at Harrogate, compared with 25% whose preferred location was Olympia;
- ◆ Of those members who have been to Harrogate, 64% said it was their preferred location, while only 16% said they would like to see it moved to Olympia;
- ◆ Of the members preferring Olympia the vast majority, not surprisingly, came from the south. But it is interesting to see that their second choice was Harrogate and not the NEC at Birmingham;
- ◆ 67% of northern greenkeepers would prefer the show to be at Harrogate, and only 8% of northern greenkeepers want it to be in London;
- ◆ A question about 'where and how members learn' at the BTME showed that 36% of their time is spent talking to the exhibitors on stands, 32% of their time is spent talking and learning from other greenkeepers, and 32% of their time is spent learning more formally from the seminar programme which is run in conjunction with the show;
- ◆ Nearly a quarter of members who attend the BIGGA week stay for three days – 19% stay for one day, 14% for two days, 22% for three days, 5% for four days and 11% for the full five days;
- ◆ Of the 56% of members who have visited the IoG's show (this year called SALTEX), most go for just one day and only 1% attend on all three days;
- ◆ 9% of BIGGA members are also members of IoG.

Members were also given the opportunity to expand their views.

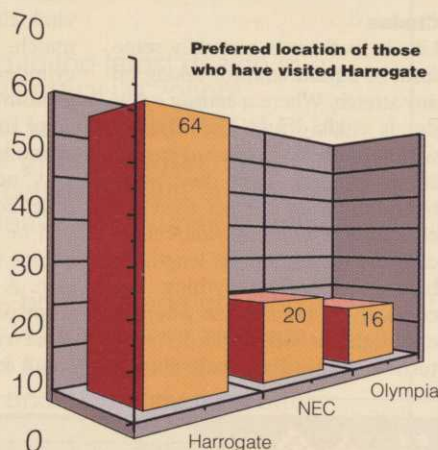
Typical comments from members included:

"Harrogate is a compact, friendly venue and has a good reputation. The NEC could

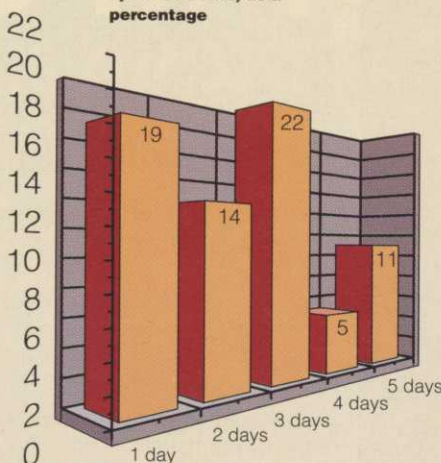
## What BIGGA members thought of the proposals to change BTME



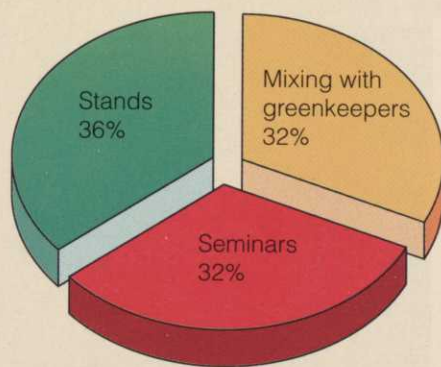
Above: Preferred location for BTME – percentage of BIGGA members



Below: Number of days spent at BTME, as a percentage



Below: Learning forums at the BTME – where members learn



be a bit impersonal – and what about accommodation? Olympia has parking problems, expensive accommodation, even travelling from the outskirts of London can be a problem."

"Olympia is much closer to my home address but I am not sure the accommodation would be available to keep the close-knit companionship which is always available at Harrogate."

"Why oh why should we greenkeepers 'North of Watford' have to succumb to the industry's notion that London is the best

venue for everything? Harrogate is centrally located for all greenkeepers, making it more likely that our Scottish 'cousins' will attend. Harrogate is a success, I don't ever remember sitting on a motorway slip road there for over an hour watching the exhibition from afar."

"I see this proposal as further erosion of our independence."

"A first-class show marked on every greenkeeper's calendar. Difficult to better but easy to spoil."

● See also Grass Notes, Page 50



Send your letters to **The Editor, Greenkeeper International, Aldwark Manor, Aldwark, Aine, York YO6 2NF** or fax them on **0347 838864**

# BTME formula is just right: the correct decision has been made

To the Executive Director,

I have just received a copy of your press release regarding the decision to continue with the BTME in Harrogate.

May I just say how pleased I am that this decision has been taken – your formula for your show is right.

As a company we look forward to another successful exhibition with you in 1995 and many more in the years to come.

**Lance Bassett, sales director, Allen Power Equipment Ltd, Didcot, Oxon.**

● Editor's note: *We look forward to seeing you and the other 130 or so exhibitors at next year's BTME – and even more companies the following year. The number and location of shows seems to be the big issue at the moment and we'd love to hear the views of other companies, especially if they are members of the AEA.*

## Occasion to remember

May I take this opportunity to say a very big thank-you to everyone involved in the Toro/PGA European Tour Student Greenkeeper of the Year finals at Aldwark Manor. Both the sponsors, Toro and the PGA European Tour, with the support of BIGGA, laid on a very memorable few days for myself and fellow finalists: bucks-fizz; smoked salmon sandwiches; fresh fruit in the rooms; what seemed like a very long, brandy assisted, wait leading to the eventual results; 8p a car toll bridges; and friendly debates with Bruce Jamieson of the European Tour on new courses, POA! and fertiliser programmes (do greenkeepers ever stop talking shop?)

I feel very honoured to have been chosen as the winner of the Toro Scholarship to the Turf Grass Managers Course at the University of Massachusetts in January 1995 and am looking forward to the experience immensely. I would also like to thank Effingham GC and course manager Peter Broadbent for their continued support and encouragement.

**Euan Grant, Toro/PGA European Tour Student Greenkeeper of the Year**

## From bad to verse

Working for a club that has never had, or will consider, a No Start Before Time rule to allow greenkeepers an uninterrupted pair of hours in the morning to complete our greens cutting programme and be off the 'front nine' thus not annoying or interrupting the golfers' morning round, it has inspired me to compose the following verses of the daily confrontation between greenkeepers and the 'O-Dark 100' golfing set.

I hope it will bring a knowing smile to the

faces of other greenkeepers who are in the same position or a sigh of relief from those who are lucky enough to enjoy the luxury of a No Start Before Time cushion in their daily toil.

*A KEEPER OF THE GREENS*

*The sun was just out, there's no one about  
as the greenkeeper cut the first green  
His Ransomes it flew and with a good heavy dew  
it was easy to see where he'd been.*

*When out of the blue, a golf ball flew  
down the line on the green he was cutting  
had the wind covered 'Ore? the Yell of a "fore"  
or was the golfer a rush to be putting.*

*At the end of the line he stood as he should  
waiting for the golfer to putt.  
How nice it would be, to be sat drinking tea  
with all the greens finished and cut.*

*With putter in hand the golfer did stand  
assessing the borrows and breaks  
Be sure to be up, just right of the cup  
don't want to make any mistakes.*

*He took up his stance, this was a par chance  
and struck the ball at the hole.  
But he hit it too hard, no par on the card  
as on and on it did roll.*

*Now by the way of compensation,  
there's a fact known by golfers all  
that the noise of a greenkeepers mower  
affects the roll of a ball.*

*So glaring at the offending greenkeeper  
to the next tee he strode away  
loudly muttering that green cutting  
shouldn't be done at this time of day.*

*The greenkeeper walked down the line he had cut  
from his pocket he took out a tee  
and removed the pitchmark from the green  
that the golfer had left, unintentionally!*

*I could have joined the Army, the Navy or  
Marines*

*But I volunteered to soldier here  
as a "keeper of the greens".*

**GOD GIVE ME PATIENCE**

**J MacGregor, greenkeeper, Exmouth**

## Wormkiller plea

**An open letter to chemical companies,**  
Please make a wormkiller as good as Chlor-dane.

To the powers that be, a reprieve for Chlor-dane would be the best news possible to all British golf clubs.

**Bruce Burnell, Cleveland section**

## Using Nortron to control Poa?

*If you are, Jon Allbutt offers this warning*

As the fight to maintain pure bentgrass and fescue/bentgrass swards approaches desperation, many greenkeepers are using some herbicides 'off label', sometimes based on established practises in other countries, to curb the march of Poa.

It is true that there is an approval for the use of Nortron (ethofumesate) in amenity turf, but before you rush out and place your order pause a moment and look at the product label. There are currently no label recommendations for the use of Nortron in amenity turf; its use for this purpose must therefore be at the risk of the user. The amenity approval was based on work that established a broad tolerance to the product by *L. perenne* in established ryegrass swards. However there is, as yet, insufficient field trial work to be sure of its phytotoxic effects on fine turf grasses. As with many pesticides there will be variation in the tolerance of the cultivars within a given species. Trial work is needed with different cultivars, at different rates, in different soil types, and also at different stages of growth before a label recommendation can be given with confidence.

What is clear, however, is that Nortron must not be used on non-ryegrass swards established for less than 12 months, or at the full label rate on even established fine turf species.

Ethofumesate is absorbed by both shoots and roots. As it is non-volatile, uptake always occurs from the aqueous solution. For some susceptible species, the most effective route of uptake is via the emerging shoot as it passes through the layer of treated soil. However, for other species root uptake of ethofumesate is also important to give effective control. As for all soil applied herbicides, the activity of ethofumesate can be affected by soil conditions. Ethofumesate activity may be reduced where there is insufficient soil moisture or by a high soil organic matter content.

Ethofumesate has a reasonable degree of residual activity (several weeks depending on conditions) and it is also effective against some broad leaved weeds.

Some preliminary work would suggest that there is good control of *Poa annua* with sequential treatments at lower rates, but the approval holder AgrEvo is adamant that more work is needed here to establish varietal tolerance in the many cultivars used in fine turf seed mixtures.

So greenkeepers take note, you run the risk of causing significant damage to your precious turf when experimenting with application rates; remember too that dose rates found to be successful in, say the USA, cannot be safely applied under UK ground conditions. Soil formation and moisture content are critical factors for the successful use of this type of herbicide.

You have been warned!

# Around the Green

Keeping in touch with news and comment from the regions

## DEVON AND CORNWALL

Our Christmas meeting will once again be held at Okehampton GC on Wednesday December 14. As last year, numbers will be limited to the first 80 members who reply by the closing date. The day will commence with a greensome stableford competition for the PJ Flegg Trophy. As usual our non-golfing members will have the now customary tour of the course before returning to the clubhouse for some festive spirit!

The comedian this year – back by popular demand – is Tank Sherman.

Once again your region has been able to offer its members a Westurf-subsidised trip to the 1995 BTME which is held in the splendid town of Harrogate. If you haven't been able to attend the show and seminars in the past and are considering attending the regional trip but would like to know more about it, please give me a call. I'm sure you will feel you can't afford to miss this event which will only cost members of our region £99 for three nights B&B, entry to all seminars and return coach travel.

RICHARD WHYMAN

## SOUTH WEST

A warm welcome is extended to two new members – David King, assistant greenkeeper at Woodspring GC, and Leonard Bates, an assistant from the Manor Golf Company. The section anticipates your future support with an invitation to forthcoming events.

As some people start their greenkeeping careers so it is time for others to take life a little easier. I am referring to Les Johnson from Salford GC who reached retirement recently. Les joined Mangotsfield GC in 1974 where he assisted in its

## EVENTS DIARY

November 9-10: Scotsturf, Ingleston, Edinburgh

December 1: Scottish Region North Section one-day conference at Craibstone Estate, Bucksburn, Aberdeen

January 23-24, 1995: National Education Conference, Harrogate

January 25-27: BTME '95, Harrogate International Centre

original construction before moving to Woodlands GC again helping in its setting out and establishment. He left in 1980 to join Lansdown GC where he spent 11 years before taking an assistant's position at Salford GC. On behalf of us all, I wish Les best wishes in his retirement and look to his continued support to section events as has been the case over the previous years.

By now, every member should have received information on, and application forms for, both the regional seminar at Cannington College on November 30 and the four-day visit to BTME at Harrogate in January. Both events take up a considerable amount of Gordon and Marion Child's time in organisation for the betterment of education throughout the region, and so it is up to everyone to show their support in attending, if possible. The BTME package is being offered at a heavily subsidised price (just £99 for members) compared to the figure for other regions, thanks to its sponsorship from funds from Westurf earlier this year.

Congratulations to the South West Region on the third place achieved in the Hayter National Finals at Pannal GC.

Our final section event for '94 is the Christmas Tournament on December 15 at Burnham & Berrow GC. A morning round of golf will be followed by Christmas dinner, a raffle and, for the first time, a comedian to round off the day's festivities. See you on the 15th!

KEVIN GREEN

## CENTRAL SCOTLAND

The section's first five-a-side football tournament proved to be a huge success with 11 teams taking part. The football was fast and furious with everyone trying to prove that they were fitter than each other, but the games were played in the best of spirits and no yellow or red cards had to be used. The eventual winners were Aberdour Athletes who defeated Downfield GC in the final, with the other semi-finalists being Tulliallan Terrors and The Pars. Following the success of this tournament it is hoped to make it an annual event.

Congratulations go to Willie (Whitty) and Mairi Whitfield on the birth of their first child, son Jack. All three are doing well and Whitty is coping well with his new role as proud Dad.

With the news that the Open is returning to Carnoustie, congratulations are due to course superintendent John Philp whose efforts to present a course worthy of hosting the world's no1 tournament are at last being rewarded. There is no doubt that John and his staff will produce a course which will make the world's elite golfers realise what they have been missing by being away from Carnoustie for so long. Well done, John!

Two men on the move are Gavin Graham and Colin Wade, both from Higgs Castle GC. Gavin is going to the new course

## JOHN DEERE



Nothing Runs Like a Deere

0206  
230283/  
230146



PHONE FOR DETAILS  
OF HIRE MACHINERY

# GREEN WORLD

P. TUCKWELL LTD

Ardleigh Hall, Ardleigh,  
Colchester, Essex  
C07 7LG

# Shanks Mowers

EXPERIENCE OUR SERVICE

*The Turfcare Machinery you want  
and  
The Professional Support Service  
you need!*

RANSOMES

JACOBSEN

GREEN'S

CONTACT US NOW AND USE  
OUR EXPERIENCE

GROVE WORKS, BENSAM GROVE  
THORNTON HEATH, SURREY CR4 8DA

081-771 4811 (Telephone & Fax)

Get on to **GIBBS**

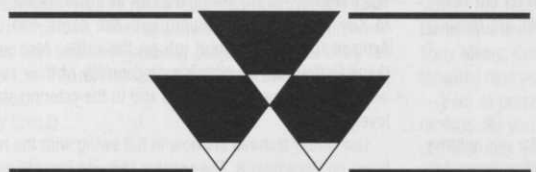
LEADING SPECIALISTS IN  
TURF MAINTENANCE MACHINERY

MAIN DEALERS FOR



**RANSOMES  
CUSHMAN  
RYAN** Total Turf Care.

J. GIBBS LTD  
BEDFONT, MIDDLESEX  
TELEPHONE: 081 890 5071  
FAX: 081 751 0108



**SENDMARSH  
TRACTORS**

DISTRIBUTORS OF GROUND CARE AND MAINTENANCE EQUIPMENT

MAIN AGENTS FOR



**BLEC**

**A S MARSTON  
TRAILERS**

**GRADE ALL**

Used equipment:

BLEC one mtr Stoneburier, ex. demo .....£2,800

**The Forge, Ockham Lane, Cobham,  
Surrey KT11 1LU**

**Tel: 0932 866626 Fax: 0932 863046**



### Turf-Care Supplies:

- Fertilisers
- Soil Conditioners
- Wetting Agents
- Pesticides
- Grass Seeds
- Turf
- Line Marking Materials
- Sports Equipment
- Top Dressings
- Soils & Sands
- Composts
- Bark
- Tools

### Engineering Services:

- New Machinery
- Reconditioned Machinery
- Service
- Repairs
- Overhauls
- Spare Parts
- On Site Servicing and Repairs

### Hire and Contract Services:

- Specialist plant hire
- Verti-draining
- Aerating
- Top Dressing
- Over-Seeding
- Hydro-Seeding
- Grass Cutting
- Spraying

**For all your Turf-Care needs**

**PARKER HART**

T. Parker & Sons (Turf Management) Limited,  
Maiden Green Farm, Worcester Park, Surrey KT4 7NF  
Tel: 081-337 7791 Fax: 081-330 7392

at Loch Lomond and Colin is going to Alloa GC. Every success in the future, lads!

This is quite a busy month for events in the section with the lecture by British Seed Houses at Aberdour on the 8th, the annual dinner/dance at Alloa on the 25th and the STS lecture and the AGM again at Aberdour on the 29th.

Please remember that all prize draw tickets, sold or unsold, must be returned to me before the 29th.

JOHN CRAWFORD

## SUSSEX

Our penultimate golf tournament saw us once again at Mannings Heath GC. Our last visit was some five years ago and, as then, the course was in fine shape. Thanks to Roy and his lads for all their efforts. Hopefully on our next visit we'll be able to play the new course which is currently under construction.

The format of the day was a morning medal followed by a stableford competition in the afternoon. The prizes for all the events were kindly sponsored by Parker Hart.

Medal results: Greenkeepers - 1, Raymond Day, 69; 2, Bill Francis, 72; 3, Roland Hughes, 74; Trade/guests - 1, Jim Coppens, 73; 2, Jeff Atkinson, 77.

Stableford results: Greenkeepers - 1, Jameson White, 41pts; 2, Jon Hill, 36pts; 3, Chris Reed, 36pts; Trade/guests - 1, Phil Clark 37pts; 2, Steve Darlington 35pts.

The day was thoroughly enjoyed by all, the course being a joy to play and the food provided by the catering staff was excellent. Our thanks to them. Our appreciation also goes to the committee of Mannings Heath for allowing us the use of their course, and to the Antoliks for doing all the donkey work.

Our next meeting will be the AGM and all members will be informed in due course (hopefully before the AGM!) This will be followed in December by the foremost event of the year, the Turkey Trot at Littlehampton GC. This ever popular event will once again be on a first come basis, so when the invites go out get your money in fast. Don't forget the committee rule: priority goes to those members who played in at least one other event during 1994.

MARK WILTON

## NORTH WEST

In March of this year I happened to call on Tom O'Brien at the Royal Birkdale GC and during our conversation I asked him how he felt about his imminent retirement in October. He replied that he was looking forward to it but he would have liked the greenkeepers to have held a tournament at Birkdale before he retired. I immediately wrote to Birkdale requesting permission to hold our Autumn tournament there and almost by return of post courtesy of the course was granted. Understandably I suppose, we had the biggest turnout of greenkeepers in the NW for golf for many years. The weather was terrible with non-stop rain through the previous night and during the day, but the course was in great condition. The new greens (which have knitted well) really are difficult to read with more borrows in them than a building society, and when the Open is played at Birkdale in 1998 and a short putt is missed, I will understand why.

Although everybody got soaked through the scores returned were good and the main prizes were: best gross - Trevor Foster, 74 playing off 1; best nett - Chris Ball; over-55s - Bill Shipley; guest prize - Tony Cundall; Aggregate Trophy - Paul Pearse, 216 nett; nearest the pin - Frank Platt; Longest drive - Trevor Foster.

The prize list went to 15th nett due to gifts from the following companies - Cheshire Light Tractors, Rufford Topdress, Burrows, Rite Feed, Turner Groundscare, Cheshire Sand, Richard Campey, Martin Bros, Acorn Supplies, Gem, Sisis, Hayters, Sharrocks, Rigby Taylor, Turfmech, Garry Worrall Groundcare.

After the dinner and presentation, the N/W section presented Tom O'Brien with an original watercolour painting of the view towards the clubhouse from the 18th fairway. One added attraction on the day was meeting Howard Keel who was playing golf with Johnny Mathis and other stars. I shook hands with Howard Keel who said to a group of us: "I have great respect for you guys and what you do. I am a member of Bel Air and was greens chairman for a couple of years, and I realise what a great job you guys do." Wouldn't it be nice to have more greens chairmen like that - who spent most of his time in Dallas with Miss Ellie and just called in occasionally.

I have just returned from my annual pilgrimage to the Hayter Final (not as a finalist, as bus driver and starter) and although no N/W section members qualified, the Northern Region won the team prize - £500 which will be used towards education in the region.

# Around the Green



In closing I would like to wish Tom O'Brien a long and happy retirement and his successor, Chris Whittle, all the best in his new appointment.

BERT CROSS

## CLEVELAND

Ron Butler at Wilton GC now has a new £61,000 shed. This is an example to other clubs. A new shed is five per cent of a new clubhouse. Staff cannot only work safer but also more efficiently, ie in bad weather.

The centenary year for Bedale, Bishop Auckland and Saltburn clubs has been successful, and Bedale were winners of three club competitions. But Bishop Auckland continues to have anaerobic conditions under greens.

New turf purchased as greens turf at two other local clubs has anaerobic black layer half an inch from the surface and when cut and played on, ie at 3/16, areas are dying off. The question now is what do we call quality? Old fashioned greens with Poa annua or fescue/bent are easy to look after in comparison.

South Shields now have Glen Baxter as head greenkeeper. Billingham have taken on Chris Mathews from Dinsdale Spa GC as head greenkeeper under manager Bob Lawton. Other staff members are Ray Mathews and Lee Cadwallader.

We hear that David Malcolm near Frankfurt in Germany has a new tiptop course under his direction. With sand greens and tees like billiard tables he has an excellent standard. He is respected and has no green committee to contend with. What he says goes!

Cleveland section committee would like a close link with our European members and would welcome an exchange visit, or adopt a club from another country. We would welcome visitors here to compare course maintenance and the amount of golf we have, ie wear v compaction on our heavy soil. Middlesbrough Municipal GC, for example, are heading for 80,000 rounds.

BRUCE BURNELL

## SOUTH WALES

There was a somewhat disappointing turnout for our autumn competition at Clyne GC, Swansea. Only 20 golfers competed for the Jacobsen Cup, Presidents Shield, Presidents Cup and a share of the superb prizes, compliments of the sponsors, Keith Morgan Mowers, our local Jacobsen main dealer.

Our sincere thanks to Keith for his continued support and outstanding generosity and for making what was in all an extremely enjoyable day.

Our compliments to Henry Fry and his greenstaff for providing as always an extremely well presented course with greens as tricky as ever. Our thanks also go to the caterers for an outstanding evening dinner, to Kim Davies, Colin Murphy and everyone at Clyne GC for their hospitality, support and courtesy of the day.

Winners: Jacobsen Cup - Andrew Roach, Haverfordwest GC; Presidents Shield - Nick Arnold, Clyne GC; Presidents Cup - John Phillips, St Davids City GC; Longest drive - John Phillips, St Davids City GC; nearest the pin - Mike Jones, INCO GC.

At the end of the evening a presentation was made on behalf of the members of the section by our chairman, Idwal Morris to the retiring head greenkeeper of Clyne, Henry Fry. Henry accepted as a gift an engraved wall clock in recognition of all the hard work and commitment that he has shown the associations over the years. Henry's late father, Harry, was also head greenkeeper of Clyne but unlike Henry he started his greenkeeping career at the nearby Pennard golf course. Harry moved to Clyne in 1923 where he remained until 1962. Henry started under the wing of his father at Clyne in 1958 and has remained there throughout. He will retire at Christmas. Add also to the fact that both Henry and Harry have been chairman to both the Welsh Golf Greenkeepers Association and the British Golf Greenkeepers Associations and this must be some kind of record.

John Deere's fourth annual roadshow was held at Oaklands Mansion, Carmarthen, home of 'Power Cut'. More than 80 people showed up to view and test an ever increasing sta-

ble of John Deere equipment. New at the show was the diesel greens mower, a tees/surrounds mower, a light/medium fairway mower, an all-new hand mower, various tractor units, Amazone equipment and also Dori cutting units.

The weather remained dry, so with old acquaintances renewed and plenty of refreshment, a good day was had by all. Our thanks to Malcolm Rees and all at Power Cut for their hospitality.

Congratulations to 20-year-old Byron Thomas of the Morlais Castle GC for winning the regional final of the Toro/PGA European Tour Student Greenkeeper of the Year, and for coming runner-up in the National Final.

Congratulations also to 27-year-old Neil Smith of the Royal Porthcawl GC. Neil was recently appointed head greenkeeper of the Clyne GC and will take up his new position early in the New Year. We wish him well.

Dates for your diary: November 30 - The annual South West and South Wales seminar at Cannington College, Bridgewater, Somerset, sponsored by Levington Horticulture with talks by David Golding and Jim Arthur; Wednesday December 14 - Christmas competition and AGM at the Pyle & Kenfig GC with evening entertainment by comedian Colin Price.

PETER LACEY

## SHEFFIELD

Our Autumn Tournament took place at Retford GC, a very testing course in good condition after all the rain. The new half of the course was well laid out with some very good holes. Our thanks to Andrew Hepenstall, the head greenkeeper, Nigel Storey, his deputy, and the rest of the staff at Retford.

The event's main sponsor was Purdy's of Retford and we thank, in particular, Les Purdy and Chris Bryden for an excellent prize table. Contributions were also received from: Peter Fell of Aitkens, Mike Brear of Trident, Alan Dyson of Gem and Steve Burroughs of Amenity Turf Supplies. Also present were Mark Osbourne of Jacobsen, Ivan Seaman and our president, Mr Arnold. We thank you all for your continued support.

The weather was nice and sunny which enabled us to have a round of golf in shirt sleeves for a change, although the course was testing, there were a few good scores in: 1, Colin Hopper, Town Moor GC, 37pts; 2, Kevin Hazlehurst, Lindrick GC, 35pts; 3, Ian Collett, Brough GC, 35pts.

We had a great day at Retford and a big thank-you goes to Barry Heaney for organising it all for us again. Thank you also to Kevin Atherton for helping with the cards and Graham Arnsen for doing a good job on the raffle. Also we must thank Retford GC for allowing us courtesy of their course as well as making us feel welcome and to the catering staff for a lovely meal.

Our winter lectures are now in full swing with the next one being on December 8. The speaker is David Stansfield of PSD Agronomy. There is another lecture on February 2. Please support your section at these lectures as they are for your benefit. Also please note that you will have to attend at least two lectures to qualify to play in the golf competitions next year. When attending lectures at Rotherham GC, please wear suitable clothing - jacket, collar and tie - at all times.

New members this month, whom I hope to see at forthcoming lectures, include: Michael O'Brien, David Williams, Gary Collier, Michael Newton, Richard Stanley, Derek McJanet, Simon Harley, Colin Fretwell, Paul Wylie, Nathan Taylor, Paul Green, Jason Williamson, Ryan Binns and Andrew Chapman.

IAN COLLETT

## EAST SCOTLAND

Congratulations to Tom Murray of Ratho Park GC who has won through to the finals of the ICI-sponsored Greenkeeper of the Year. This is a great honour for Tom and to Scotland, and is the second year running that an East Section course has reached the final stages. Last year it was Graham Wood of Dunbar GC. Everyone who has played Ratho Park realises that the course is always in first-class condition. Set in a woodland area, its main feature is the clubhouse which stands majestically in the background. Tom has been at Ratho since leaving school. He started as an apprentice and worked his way up to head greenkeeper. A three-handicap golfer, he is married with a family and a member of the East Section Committee. We are all delighted for him and hopefully he will go all the way as the ICI Greenkeeper of the Year. Good luck Tom, even though it means missing the annual dance.

Still on the congratulation side; Chris Yeaman and Andy Forrest are the section's nominees for the Patrons Awards. Chris and Andy can be seen at every event on the section calendar, including the BTME at Harrogate which they have

never missed. This year, lads, your fares will be paid for.

The annual Autumn Tournament was held over Uphall Golf Club. A very good attendance on a very wet day. Head greenkeeper Peter Ormiston and his staff had the course in first-class condition. This is the first time that the Association has played here, but hopefully it won't be the last. Our thanks as always go to the captain and council for the courtesy and to the bar and catering staff for the excellent food and drink. During the presentations it was announced that our old friend Richard Dugan had recently retired after long service at Glencourse GC. A presentation was made on behalf of the members and for the first time in his life Richard was stuck for words. May we all wish him a long and happy retirement. The new head greenkeeper at Glencourse is Ian Bell, formerly of Duddingston GC and we all wish him well in his new job.

Pat Hamburg, late of Dalmahoy, has also moved to Milton Road. Good luck, Pat.

Another season has now gone. Hopefully it has been a good one for all, but don't forget the full calendar of events still to come during the winter. Check your fixture cards for all lectures etc. The annual dance on December 3 is a complete sellout with a waiting list for tickets. The social committee has done an excellent job on choosing the venue. Almost all the rooms have been taken over - I wonder who booked the four-poster bed? Our guest of honour that night will be our Scottish chairman Gordon Moir and his charming wife Pauline. Gordon has never asked the format of the dance, just where he can get a game of golf.

WILLIE BLAIR

### SOUTH WEST AND WALES REGION

Several things are happening in the South West and South Wales Region of BIGGA, but here are just one or two reminders before you start thinking about the Christmas crackers to come.

Our regional seminar to be held at Cannington College, Somerset on November 30 is sponsored by Levington Horticulture Ltd. At £10 per member, including lunch, it offers not only a good programme, but value for money. If you are not a BIGGA member - then you should be - you will have to pay £15 per person.

Thoughts are turned to the BTME in Harrogate in January 1995, and our popular coach trip and package deal sponsored by Westurf is offered again at £99 per member. Wives are welcome at a reduced rate and for non-members the cost is £125 per person. This will include coach travel, three nights bed and breakfast, seminar programmes and entry to the exhibition. Please ring 0803 844056 for further details of both events.

GORDON CHILD

### NORTH SCOTLAND

The autumn outing at Murrayshall was a great success. Glorious weather greeted the 71 golfers on the day and the winners were as follows: Scratch - I, J Urquhart, Tain 72; 2, G Tough, Montrose 73; Class One - I, K Peace, Inverurie 76-5=71; 2, W Robertson, Blairgowrie 78-6=72bih; 3, E McLaren, Blairgowrie 76-4=72; Class Two - I, A Reid, Letham Grange 79-11=68bih; 2, S Griffiths, Tain 77-9=68; 3, S McBain, Nigg Bay 82-10=72; Class Three - I, L Rae, Montrose 92-24=68; 2, P Wood, Newmarcher 89-20=69; 3, M Rodgers, Fraserburgh 99-26=73bih; Veteran - I, A Grant, retired 86-9=77; 2, W Forsyth, Duff House Royal 90-12=78; Apprentice - I, B Cameron, Inverurie 82-10=72; 2, B Cocker Jnr, Alyth 89-16=73; Trade - P Allan, Stewarts 73-5=68; Guest - M Brown, Newmarcher 74-5=69 (apologies for missing you out on the day, prize in the post); Booby - G Asher, Kemnay; Longest drive - G Tough; Nearest the pin - G Burrell, Forres; Aggregate trophies - Meldrum, K Peace 141; M & M Veteran, W Forsyth 152; Committee Trophy - G Moir, St Andrews 81-6=75; The BIGGA Blazer was won by Morris Rodgers, Fraserburgh, who was making his last outing appearance before moving south to a new job, we wish him well.

The 200 Club winners were as follows: May £30 - Jim Hamilton, Inverness; June £30 - Isobel Walker, Stonehaven; July £40 - Colin Forbes, Aboyne; August £100 - Steve Simpson, Fraserburgh. It was great to see a lot of new faces at the outing and thanks must go to all at Murrayshall for helping to make the day so good.

AGM notices should be out and about now. The format for the day is the annual golf match in the morning, free lunch lecture and the AGM at 3pm. Anyone wanting to stand for committee must have the nomination in to me one week prior to the AGM.

There may be a few places left for next month's one-day conference in Aberdeen so if you have forgotten and still want to go, give Alisdair McLaren a ring on 0479 873365 to check

# Around the Green



availability.

Finally, the two section recipients of the 1994 Patrons Award are I Macleod, Tain, and D Duguid, Westhill. Each will receive £200 to be used to finance an educational course or a trip to Harrogate in January.

IAIN MACLEOD

### SURREY

The Parker Sawyer was played at Purley Downs GC. Congratulations to David Andrews and his staff for presenting the course so superbly. After a bad start to the day with fog and light rain, the competitors then played in brilliant sunshine for a change. Unfortunately entries were very low but those who played thoroughly enjoyed themselves. Thanks go to Purley Downs GC and Ron Jobson for his usual valued services.

Results: 1, Derek Walder, 37pts; 2, K Boxall, 37pts; 3, David Wyborn, 35pts.

A belated congratulations to Robert Brewer, previously of Sunningdale GC, upon his appointment as course manager of Dukes Dene GC.

Any members wishing to attend the BIGGA Turf Management Exhibition in January at Harrogate, please contact your section secretary as numbers are needed to warrant a coach.

Forthcoming events include the Turkey Trot at Kingswood Golf and Country Club on December 8. Price: £18. Please support this event and the AGM that follows. Also, a further winter lecture is being organised for January/February.

DAVID GIBBS

### NORTHERN SECTION

Following the Hayter Challenge Final at Pannal Golf Club, near Harrogate, I am pleased to inform you that the Northern Region were successful once again. The team that represented the Region: Garry Potter, Alan Baxter, John Waite, David Spurden, Chris Powley, Chris Fiddell, John Jones and Tony Mears. Congratulations to you all and I hope this feat is repeated next year.

I am at present formulating a programme for the coming months. So you will be receiving a letter soon. One date you can put into your diary is Saturday March 11, 1995. This being the date for our Annual Dinner which is being held at Pannal GC, more details will follow later.

We welcome to our section another new member - Anthony John William Stone from Barnsley MBC.

Any member requiring information contact me on 0274 568128.

PAT MURPHY

### AYRSHIRE

The Autumn Outing, held over Glasgow Gables, was a great success. The highest turnout of members for several years, including a good number of very welcome new faces, played on a lovely day over a course in very good condition. Scores were high only because of the severe heather rough which made finding the ball difficult, never mind playing it. Our thanks to Glasgow GC, to the excellent caterers, and to Brian and his staff of greenkeepers for an excellent day.

Congratulations to Keith Hardie on his move from assistant at Wigtown Country club to head greenkeeper at Newton Stewart GC.

Hopefully by the time you read this, a winter programme will have been formulated and forwarded to all section members. Please attend to ensure their success.

Finally, hard luck to our representatives in the Hayter Final. Ian McNab and Steven Knaggs found that the Irish are unbeatable. Try the golf next time, lads.

DUNCAN GRAY

### BUCKS, BERKS AND OXON

Risboro Turf provided a day's golf at Badgemore Park GC coupled with a splendid display of machinery. Many thanks to Mark and staff for an enjoyable day. Results: 1, C Mitchell, Maidenhead GC; 2, P Howard, Stanmore GC; 3, R Tydeman, Crowham Hurst GC. Sadly the wooden spoon went to A Milton of Windmill GC. No doubt it will be displayed with pride in the bothy.

The next event on the calendar is the Turkey Trot at Mapledurham GC on December 6 followed by the AGM in the evening. It would be nice to see some new faces so please make the effort to attend.

Congratulations to G Butler and D Jones of Gerrards Cross for making it through to the Hayter Final.

A personal thanks from Ray at Temple for assistance during their celebrity day.

If you have anything to contribute to this column please call me on 0491 578147.

LINDSAY ANDERSON.

### MIDLANDS

Our last tournament, played at Robin Hood GC, produced some very low scoring. Mike Hughes was the eventual winner with a score of 103 nett over 27 holes, six under par. Second was Trevor Morris and in third place was Vince Lee. Mike Hughes also won the gross prize with a score of 109 over 27 holes. Ivan Toon won our trade prize which still remains as competitive as ever.

Many thanks to the many trade reps for again supporting our section events. Many thanks also to Robin Hood GC for allowing us the use of their facilities and course which was prepared in such good condition by David Brazier and his staff.

Our next tournament is our Xmas tournament and will be held on December 7 at Little Aston GC. Closing date for entries is November 7.

Our AGM this year will be held at Edgbaston GC on December 15 at 3pm and not at our Xmas tournament. As I said previously, we are looking for a new secretary as from the AGM. If you are interested and would like further information please give me a ring on 0789 762912. Minutes from the last AGM are available to our members and will be issued on the day, however if you would like a copy forwarding to you please contact me.

DEAN CLEAVER

### WEST SCOTLAND

Fereneze GC was the venue for the autumn outing. Once again it was well attended with more than 50 greenkeepers and trade. Congratulations go to John Scott and his staff for presenting the course so well.

Results: Cat 1 - 1, G Bruen, East Kilbride GC, 79-8=71; 2, D Montgomery, Cawder GC, 81-9=72; 3, S McCrindle, Paisley GC, 76-3=73; Cat 2 - 1, A Brawley, East Kilbride, 84-16=68; 2, J McCormack, Cawder GC, 91-18=73; 3, A McDowall, Torrance House GC, 91-16=75; Cat 3 - G Nisbet, Kilmont, 99-26=73; 2, M Carey, Balmore, 95-21=74bih; 3, N Hendry, Langlands, 99-25=74.

Members are reminded that the ever popular BIGGA annual dinner fast approaches and the date has been set for Friday December 2 at the Admiral Hotel, with three fantastic speakers already lined up it's sure to be a great night, so book your tickets now to avoid disappointment.

Section secretary Sandy Bulloch has a new address: 82 Dumbreck Road, Glasgow G41 4SN. Tel: 041 4274701

SCOTT BALLANTYNE

### NORTH WALES

The section held its Autumn Tournament at Porthmadog GC on what proved to be a beautiful day - hangovers aside. The course was in excellent condition thanks to the efforts of Bronco and his team and we would like to thank everyone at the club for allowing us to use their facilities and for their help on the day.

The winners were: Gem Professional Shield - A Peel, 34pts; Major Owen Trophy (best gross) - A Hughes, 72; 3 - Terry Adamson, 34pts; Guest prize - Val Wickens, 39pts; 2, HR Williams, 35pts; Acorn Shield for nearest the pin - Tony Evans. The sweep winners were Val Wickens, A Padmore, Les Parry, L Povey and G Williams.

The evening's entertainment included celebrating Bronco's birthday and the lady provided by Terry Adamson to give some corrective treatment certainly turned in a performance to match anything witnessed on the golf course and with considerably less attire. We hope the wounds heal soon, Bronco.

Our thanks as always to the prize donors - Gem Professional, Acorn, Major Owen, Mommersteeg, Richard Campey, Sisis, Fraser Turf, Martin Bros, N Kelly, Pro Turf, John Osman and Portmadog GC.

On November 14 we will be holding a one-day seminar at Abergele GC. The cost is £5 and the day's proceedings will start at 11am. All members will be circulated shortly but any members of other sections who wish to attend should contact me on 0829 250556 before November 10. Non-members are also welcome and the cost is £7 including lunch.

# Around the Green



The Christmas Competition will be held at Liangollen GC on December 1. The cost is £11 for members and £16 for non-members. All entries should be sent to Terry Adamson, 27 Berwyn Ave, Penyffordd, Chester by November 25.

Finally, congratulations to Northop Country Park on the success of the Welsh Open held there recently.

ANDY CAMPBELL

## MID ANGLIA

The section had three representatives in the Midland Regional team which came second in the Hayter Challenge Tournament final at Pannal GC. These were Jon Moorhouse and John Blair of Brocket Hall GC and David Forsyth of Mid Herts GC. Jon also managed to win his handicap category (0-9) and finished second overall on the day. Well done, lads!

The Midland regional seminar will be held on November 30 at the same venue as last year, Sketchley Grange Country Hotel and Conference Centre, Hinckley, Leicestershire. Speakers include David Golding and David Stansfield, and the cost is £20 which includes a meal.

By now all section members should have received a fixture list for next year, and an entry form for the Christmas Texas Scramble. If, for any reason you haven't, please get in touch with Gerald and I'm sure he'll send you one.

Events for next year include a safe handling course with Jon Allbutt in January and a course visit to Brocket Hall, hosted by John Wells, course manager, in February. The spring and summer tournaments are at Royston and Brickendon Grange respectively, both over 36 holes. The former is the qualifier for next year's Hayter Challenge Tournament. All entries for the Christmas Texas Scramble on Tuesday December 6, at the Family Golf Centre, should be sent to Chris Brook at the usual address. This will however be Chris's last tournament as fixtures secretary as Richard Saunders is taking over this position. Please get your entries in early and ensure all your team members bring a gift for the prize table. The Family Golf Centre is situated at Gravely, just off the Stevenage junction (A602) of the A1.

PAUL LOCKETT

## EAST MIDLANDS

Our section's Autumn Tournament, held at well maintained Wellingborough GC, attracted 38 competitors. The category winners were: 0-9 - R Barker, Kirby Muxloe GC, 79-5=74; 10-18 - A Foulds, Uttoxeter GC, 85-10=75; 19-28 - A Bindley, Kirby Muxloe, 88-20=68; best nett and gross - C Chamberlain, Glen Gorse GC, 78-10=68; longest drive - R Barker; Nearest the pin - M Bindley.

This was certainly a day for being Bindleyed.

A thank-you goes to all at Wellingborough GC for their kindness and hospitality in making our day so enjoyable. Also thanks to all the trade for their kind donation of prizes

for the day, especially Charnwood and Highmeres Lawnmower Services, our main sponsor. Also a special thank-you to all the committee members for all their hard work on the day.

Our next section event is the Texas Scramble at Ullesthorpe Golf and Country Club, followed by the AGM, on November 16.

Congratulations go to P Tatlow of Kedleston Park as this year's winner of the Supaturf K/O Cup, defeating D Leatherland, also of Kedleston Park, in the final. Finally, the Christmas Tournament will take place on Wednesday December 14 and not the 16th as printed on your entry forms.

ANTHONY BINDLEY

## SOUTH COAST

The section AGM is only a month away at 4pm on Tuesday December 6 at Royal Winchester GC. Could anyone wishing to stand for the committee please contact me as soon as possible at 45 Constable Close, Sholling, Southampton SO19 1EN. My home telephone number has changed to 0703 360195 or you can try 0264 334269 or 0585 400529.

The Christmas Stableford will be held on the same day as usual. All entries to Bob Cully, 63 Upper St Helens Road, Hedge End, Southampton SO3 4LS or telephone 0489 782976.

The Hampshire GC opened a new 9-hole par 3 course in addition to the 18-hole course and driving range already open. Pop in if you are near Andover.

ALAN MITCHELL

## EAST ANGLIA

A cold and frosty morning gave way to a pleasant afternoon with a light breeze. And this was the scene that greeted East Anglian section members at Gog-Magog Golf Club near Cambridge.

Head Greenkeeper Lyndon Uphan and his trusted staff produced an excellent course and also a difficult putting competition, which was highly praised by the captain of the Gogs, Norman Benton and the rest of the group during the excellent evening meal.

As usual the trade were there in force and donated many prizes. We would like to thank: Pattissons, CMW, Rushbrooks, Parker Hart, Turfactent, Sta-Brite, Rhone-Poulenc, Ernest Doe's, Tollidays and all officials and staff from Gog-Magog for making it a memorable day.

The winners were: The Shield - S Pigott 39 points; 0-15 - 1, A Carter 35 points; 2, P Howard 34 points; 3, S Sylvester 30 points; 16-28 - 1, S Pigott 39 points; 2, I Willett, 35 points; 3, P Mallow 35 points; Guest - K Bunn 36 points; Putting - A Carter; Longest drive - J Shelton; Nearest the pin - M Day.

The next meeting will be the Turkey Trot and AGM at Aldeburgh GC on December 8. Members are reminded to bring a prize not more than £5 in value. Also, please come to the AGM so that any points you have to make about your section are heard.

IAN WILLETT



# Now for

**Hanbury Manor in Hertfordshire was once a convent school. Now seven years and £28million later there is a luxury hotel, restaurant, conference, country club and clubhouse complex with a challenging 18-hole golf course. But the work (and expense) hasn't finished yet... the greenstaff are embarking on a massive tree-planting programme.**

**T**here are 16 greenstaff at Hanbury Manor, an 18-hole golf course near Ware in Hertfordshire. This is down from a summer high of 22.

But golf course superintendent Simon Klausner, 36, needs every one of them as they strive to bring perfection to the three-year-old Jack Nicklaus Jr designed

course, tweaking it here, replacing poorer quality turf there, extending a water hazard here, reshaping a green or fairway there.

But, at the moment, the main thing on their minds is trees. They have started a programme that will see them planting 38,000 trees and shrubs on the 7,011-yard par 72 course over the next two years. The project will cost about £20,000 but they hope to get a half to two-thirds of this back in the form of grants.

Believed to be the biggest planting scheme of its kind, the trees are necessary to fulfil a dream. It was in 1985 that Hertfordshire businessman Paul Leach and local developer Jim Anderson had the idea of turning a convent school into a top-class leisure and golf resort, a London version of Gleneagles.





# the trees

Hanbury Manor, as it is now known, was already comfortably nestled in mature parklands but, before its ultimate goal could be reached, adjoining acreage, much of it in the form of cavernous gravel pits, had to be reclaimed.

Construction of the course began in 1987 and the next couple of years saw hundreds of thousands of tons of fill being transported to the old gravel pits, and mountains of earth being moved, moulded and contoured into what has become a highly acclaimed, aesthetically pleasing championship-standard golf course. By 1990, the first nine holes had been established on the original parkland site where, earlier this century, Harry Vardon had designed a course. The following year, the other nine holes (which are now the front

nine) emerged triumphant from the old gravel pits.

Now, three years on, the next stage of the development is under way. With one eye firmly on the environment and the other on the expectations of the golfer, Hanbury's management looked to horticultural consultant Brian MacDonald of Boxwood Gardens for a tree planting programme that would provide more depth and form to each of the 18 holes and encourage wildlife to establish on the 206-acre site.

The final design – created in consultation with Jack Nicklaus Jr and Simon Klausner – will see the existing woodlands and coppices being extended and new coppices being created in the ex-gravel pits. They do not want to plant long lines of trees. Where there are thin rows of mature trees, such as round the boundary

of the front nine, the straight lines will be broken up and given shape by strategic planting.

Such an ambitious scheme meant extensive research into the best species in terms of aesthetics, durability, transport, handling, short-term storage, and planting hardiness – no easy task. The answer was eventually found through a supplier which specialises in large scale production of trees grown from UK seed sources – Alba Trees. With its seed nursery in the rain shadow of the Lammermuir Hills, close to Edinburgh and the North Sea, this company consistently produces thoroughly hardened plants, well able to withstand the rigours of harsh conditions.

Using the latest methodology, Alba raises its trees in uniform cells called Rootainers which, because of their compact nature,

## What's being planted

Forest trees	Mix
Oak	15%
Lime	10%
Hornbeam	5%
Ash	5%
Total	35%

## Lesser trees

Shade Field Maple	5%
Fast Wild Cherry	10%
Silver Birch	20%
Light Crab Apple	15%
Total	50%

## Understorey

Yew	5%
Hazel	10%
Total	15%

## Coppice

Dry	Centre	Oak	10%
		Ash	10%
		Hazel	10%
		Hornbeam	10%
		Field Maple	10%
		Sweet Chestnut	10%
Edge	Birch	10%	
	Crab	10%	
	Gean	10%	
	Woody Shrub Mix	10%	
Total			100%

Wet	Centre	Willow	25%
Edge	Dogwoods		75%
Total			100%

# Now for the trees

Marking the spot for future trees at Hanbury Manor

enjoy many advantages over traditionally raised bare-root plants. Roottrainers result in fibrous, well protected root plugs incorporating a slow release, temperature sensitive fertiliser which releases nutrients only when conditions are warm. This technique has the effect of avoiding leaching out, wastage and additional fertilisation, as well as contributing to a remarkable establishment rate.

At Hanbury Manor, all the trees are being planted at about 1.8m spacing in a Tubex Quill which not only offers protection against rabbits and weed killer but also encourages vigorous growth in the first growing season. Extremely compatible with the Roottrainer plug, the Quill offers highly cost effective protection in that no ties or stakes are required for support.

With Alba's uniform cells, simple storage and handling systems, the trees are easy to plant. Han-

bury Manor's greenstaff are undertaking the programme, with the areas marked out by Mr MacDonald. Austrian-born Simon Klausner then checked these from the maintenance point of view (ie shading of tees and greens and that they didn't interfere with the irrigation system). Jack Nicklaus Jr then came over to see how strategy would be affected.

Simon is used to working with Golden Bear Design Associates as he worked at Mount Juliet in Ireland and Muirfield Village in Ohio before coming to Hertfordshire three years ago.

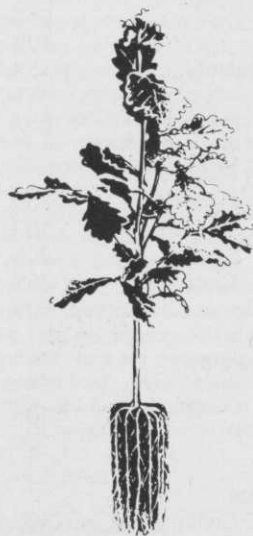
With a degree in agronomy from an agricultural college in Salzburg, Simon believes in doing everything in-house. As well as tree-planting, his staff – which includes seven qualified greenkeepers and a full-time mechanic – have also constructed the buggy path, carry out extensions to the irrigation system, look after the



country house hotel's gardens and even chop wood for the hotel's fireplaces. The ordering, invoice-checking and many other jobs which keep course managers and head greenkeepers tied to a desk are performed by Simon's own secretary. "It doesn't make sense to have a highly trained superintendent spending all his time in the office. He's better employed on the course doing

what he's been trained for," he points out.

For a young course which has already seen more than 30,000 rounds this year, Hanbury Manor is in excellent condition. The new trees will only improve its appearance, enhance the environment, offer a new challenge to the players, and give the developers' grandchildren the inheritance of a fine dream.



## Survival of the fittest

The amount of evidence for the high survival rates of Alba trees surprises even those with lifetime's experience of planting.

The secret is that all Alba trees are Roottrainer grown. This produces excellent root growth and consistent high quality. Also trees which are easy to plant, have an extended planting season and are proven cost-effective because beating up can be eliminated.

A wide selection of British grown hardwoods, conifers and shrubs is available, backed by a service which aims to set new standards for customer satisfaction.

Alba Trees plc,  
Lower Winton, Gladsmuir,  
East Lothian EH33 2AL

Telephone (062 082) 5058/9

Fax (062 082) 5316



The best start a tree can have



# NATURE *first*

## TREE MOVING

Transform your course quickly and economically  
by transplanting your own large trees.

Tree spades of all sizes available.

For free site visit and advice

Contact:

MARTIN BROMAGE

PHONE 0452 731199 FAX 0452 731131

WOOD LANE NURSERY, DOWN HATHERLEY, GLOS

AD  
REF  
387

AD  
REF  
433