

ROLLER MOWER BEATS THE GANG



THE MAJOR GROUNDSMAN ROLLERMOWERS

- No V-belts – fully gear driven through shock absorbing couplings
- Opposite rotating blade eliminates any windrowing and evenly spreads cutting
- Cutting heights from 1/2"–4"
- Ideal for parks, amenity areas, golf courses, playing pitches and sports grounds
- Various sizes available
- Patented easy skid adjustment
- 3" blade overlap
- Full width rollers front & rear



MAJOR EQUIPMENT LTD.,

Units 8/9 Calder Trading Estate, Leeds Rd, Bradley, Huddersfield, HD5 0RX
Tel: (0484) 450411, Fax: (0484) 450412

AD
REF
419

MULTI-CORE

The superb TM1500 Greens/Fairway Aerator



- 1.5 metre coring width
- Variable spacing with a choice of tine sizes. Hollow or solid tine.
- Productivity. 67,000 square feet per hour at 2.6MPH.
- Adjustable depth. Depth capacity to 5 inches.
- Durability. Rubust all steel welded frame
- No grease points. Fully sealed throughout.
- Fits your tractor. From 22HP gearbox or hydrostatic.

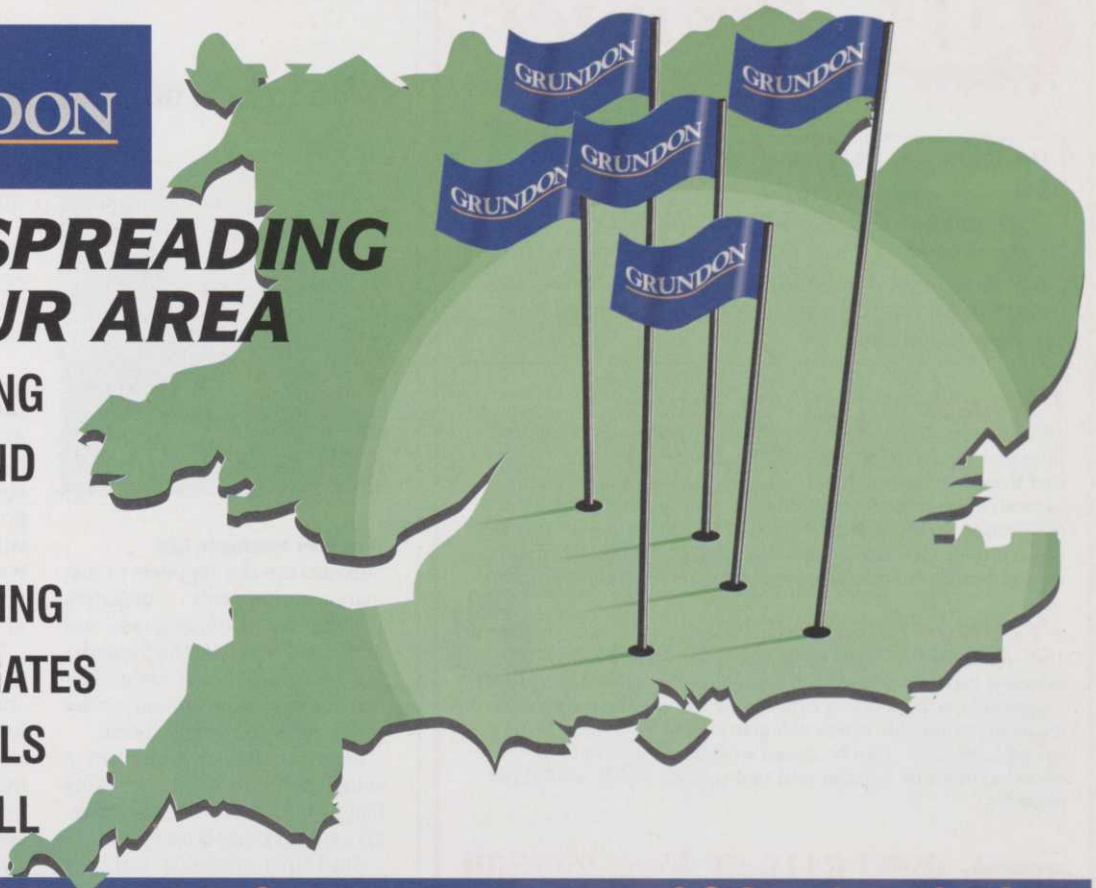
Aerators Ltd, 3 Hillside Close, Euxton, Chorley, Lancs PR7 6JB.
Tel: (0257) 231861
Fax: (0257) 231861
For Ireland please contact:
Croft Turfgrass Industries,
Greencroft, Castlebellingham,
Co. Louth. Tel: 010 353 4272163

AD
REF
347

GRUNDON

NOW SPREADING IN YOUR AREA

TOP DRESSING
BUNKER SAND
ROOT ZONE
TEES DRESSING
ALL AGGREGATES
PATH GRAVELS
COCKLESHELL



NEW HOTLINE NO: Wicklesham (0367) 244078

AD
REF
437

Turf Management Systems

WHY TURF IT WHEN YOU CAN

“SOD” IT

Nature and technology
working together

The Liquid Sod Technique a proven
alternative to turf

★ Cost effective ★ Labour saving

Dense sward containing the same percentage
of species as sown in seed mixture

For further details, contact:

TURF MANAGEMENT SYSTEMS

Dromenagh Farm, Seven Hills Road,
Iver Heath, Bucks SL0 0PA

Tel: (0895) 834411

Fax: (0895) 834892

See us
on Stand
J10

AD
REF
457

ALS Premier LIQUID FEEDS

Premier liquid fertilisers are **full strength** fertilisers equivalent to granular applied products. They are not to be confused with the many “watered down” foliar type feeds on the amenity market. They give both foliar and root feeding and can be used in conjunction with Premier Save N for extended slow release action.

Premier LIQUID FEED 20L

15-0-6 + Mg + Fe + Trace elements. A full strength balanced nitrogen, potash fertiliser with all essential elements for fine turf to encourage hardy turf with good colour but without excessive top growth. Should be used as the first spring application on intensively managed turf prior to pure nitrogen applications. Can also be used as a season long fertiliser on less stressed areas (Fairways, parks, etc.) Apply at 40L per hectare.

Premier GREEN “R” 20L

18-0-0 + Mg, Fe & Trace elements. A full strength high nitrogen booster with essential trace elements for use on intensively managed fine turf where phosphate and potash levels are sufficient which will give all the feed value of a granular product. Can be mixed with herbicides and takes effect rapidly due to foliar and root uptake. Apply at 40L per hectare.

See us
on Stand
D6



0952 641949 Fax: 247369
AMENITY LAND SERVICES, LONG LANE,
WELLINGTON, TELFORD, TF6 6HA

AD
REF
408

Landscape Industries in the spotlight

Most of the leading companies involved in turf management will be at the National Agricultural Centre, Stoneleigh Park, Warwickshire, on June 8 and 9 to show their products, technology and services.

Landscape Industries brings together a combination of trade displays, working equipment, discussion sessions and specialist technical features – and admission, parking and the exhibition catalogue are all free.

There will be more than 200 companies displaying everything from chemicals and mowers to nursery products, irrigation and garden accessories. Many manufacturers will be able to demonstrate their equipment in realistic conditions.

Education is also of importance at Landscape Industries, so many of the country's leading industry organisations will be on hand to offer advice. These include ADAS, British Turf & Landscape Irrigation Association, Arbicultural Association, City and Guilds, BALI, BLITO, ILAM,



JUNE 8/9 1994

National Agricultural Centre
Stoneleigh Park, Warwickshire

The International Exhibition for the
Professional Landscape and Leisure Industries

Dry Stone Walling Association, National Turfgrass Council, the Sports Turf Research Institute and the Joint Council for Landscape Industries, as well as ten specialist colleges.

The discussion sessions are an established part of the exhibition and will include a couple of talks relevant to greenkeepers. Again, they are free.

Who to look out for at the show



Supaturf Products Ltd

Supaturf are the suppliers of line marking systems including Topline, for marking grass and artificial surfaces, Arena for marking hard surfaces and Arena GUR for marking our ground under repair areas on the golf course.

Supaturf also manufacture a complete range of line marking liquids for all types of line markers and sports applications.

Supaturf's specialist turf and amenity products include Dilute 'n' Shoot, the quick all-in-one method of applying the world's leading wetting agent AquaGro

for the treatment of drought stressed areas.

Completing Supaturf's product line up are a full range of fertilisers for both fine turf and sports turf, fertiliser/grass seed spreaders, and Barenbrug grass seeds.

Amenity Land Services Ltd (ALS)

ALS tell us their premier liquid fertilisers are full strength and equivalent to granular official products – and not to be confused with watered down foliar type feeds. Premier liquid fertilisers give both foliar and root feeding in their action.

The fertilisers are compatible with most hormone weed killers and can therefore be applied to fine turf, sportsturf or fairways very cost effectively by spraying machine at the same time as herbicide application. Apart from the cost savings this also gives the added benefit of improving the herbicide uptake of target weeds and encouraging grass re-growth into the gaps vacated by dead weeds.

Boughton Loam and Turf Management Systems

Boughton Loam and Turf Management Systems will be showing a three dimensional display including their range of quality turf dressings, composts and pre-germinated grass seed and liquid sod.

Boughton Loam have recently acquired the patent for pre-germinated seed and liquid sod spray on grass and are the only producers of these exciting products. Danny Godfrey, technical manager, will be pleased to see you at Landscape Industries and deal with your enquiries.

Shelley Signs Ltd

Shelley Signs will have on display copies of their brochure detailing signs available ex-stock for golf courses. examples of their products will also be on display.

The brochure is split into sections covering tee markers, directional, instructional, caution, car



park and entrance and also internal signs.

All these signs are manufactured in glass reinforced plastic. This is a material widely used by local authorities across the country for their specialist outdoor signing because of its durability, toughness and ease of cleaning.

Also available are entrance signs, leader boards and full colour tee markers.

Etesia UK Ltd

Seen for the first time at Landscape Industries will be the Etesia

Hydrostatic mower with sweeper attachment and all weather cab option.

Etesia mowers are well recognised by commercial users for their exceptional ability to cut both short and long grass, in all weathers.

"Seeing is believing" - visit the demonstration area to see the outstanding performance of these low maintenance, robust, ride-on and pedestrian machines. High output and easy manoeuvrability, make them the professional's choice.

Enviromulch

Enviromulch is an attractive mulch which is ideal for landscaping and gardening use. It is manufactured from seasoned wood which is reclaimed from the renovation of wooden base pallets.

Only clean wood is used, any that is contaminated with oil, chemicals or paint is discarded and not used for wood fibre.

After grinding, the timber fibre is coloured with an organic colourant that is safe to use and meets with the American federal Environmental guidelines.

The mulch is colour retentive for more than three years and is available in four colours.

Enviromulch suppresses weed growth, aids moisture retention and helps to regulate soil temperature. The gardener or greenkeeper enjoys reduced maintenance work and enhanced garden or golf course appearance.

EnviroMulch
& Seasoned Wood Fibre



GOLF COURSE WALKWAY CHIPPINGS

Enviromulch is an attractive mulch which is ideal for many landscape applications. Manufactured from seasoned wood, the product is ideal for Golf Course walkways and has already been specified by many local authority courses since its launch at Landscape Industries '93.

Available in natural and four colours:

- REDWOOD ● GOLDEN CYPRESS
- CEDAR ● HARDWOOD DARK

ENVIROMULCH

Wood Waste Control Recycling Centre
(A division of West Bromwich Pallets)

Telephone: 021 525 4326

See us
on Stand
K19

AS SEEN ON GARDEN
TIME TV

AD
REF
459

FOR Green GOLF GREENS AND
FAIRWAYS

See us
on Stand
H21

turn to
the experts

Supaturf

SUPATURF PRODUCTS LTD
AMENITY HOUSE · 2 MAIZEFIELD · HINCKLEY FIELDS INDUSTRIAL ESTATE
HINCKLEY · LEICESTERSHIRE LE10 1YF FOR FURTHER DETAILS
Tel: (0455) 234677 or Fax: (0455) 234714

AD
REF
164



THE WORD IS SPREADING



Since the first SISIS top dresser was launched in the 1950s the name SISIS has spread throughout the UK and around the world.

Tractor mounted, independently powered or hand operated we have the right machine for every requirement, each offering a wide range of application rates, precise setting and hopper capacities up to 1.8 cu.m.

For full details of the SISIS range of top dressers write to:

"All SISIS machines are designed, patented and manufactured in Gt. Britain"

SISIS EQUIPMENT (Macclesfield) LTD:, Hurdfield, Macclesfield, Cheshire SK10 2LZ. Tel: 0625-503030 Fax: 427426
SISIS Centre In Scotland: The Roundel, Middlefield Ind. Estate, Falkirk FK2 9HG. Tel: 0324-629635 Fax: 0324-632894
SISIS Centre In USA: SISIS Inc, Florida

sisis

Advice left wanting

May I take this opportunity to pass a comment on a couple of articles in the last two editions of the magazine that perhaps help to demonstrate the inconsistency of agronomic advice being given to greenkeepers, but perhaps also the short-sighted and false economy of some of our golf clubs.

Firstly, the very fine detailed account of the building of the new greens at Birkdale. It seems a lot of trouble and hard work went into the removal of the offending "organic" soil and its subsequent replacement with a sandier rootzone. Why then replace the old *Poa* turf over this new material, surely an opportunity to instantly replace this with new fescue/bent turf grown on a sandy rootzone or of the washed variety was missed. Even STRI's Jeff Perris comments that "It will however take a long time to amend the turf from annual meadow grass to one containing more of the desirable bents and even fescues". Was this decision one of purely economic grounds, perhaps the "toughening" and remodelling aspect of the project took greater priority than the true links turf on which we assume we want to play.

Secondly, the merits of replacement of the old *Poa* turf on the new rootzone material is clearly called into question by an article in the following month's magazine, again by an STRI advisor, this time Mike Canaway. Especially interesting is the data on performance after wear and filtration rates on the new turf types laid on a sandy rootzone. Even though a *Poa* turf was not tested, comparison can surely be made. I am sure that we can all assume that the *Poa* turf in question has a very high probability of containing a large amount of organic matter, prone to disease and even if thinly cut, must still contain, in part, the "undesirable organic soil". Mike Canaway states: "Clearly the purpose of a sand-based green is to provide free draining conditions. If the turf supplied caps the rootzone, then clearly much of the effort put into golf green construction has been lost." Mike finally appears to recommend the use of the "Coronet" washed turf as having "no detrimental effects on playing quality" and being *Poa* free.

May I therefore suggest that we have a well respected advisory body contradicting itself in its recommendations and can I also ask if the option to put washed fescue/bent turf on the new greens at Birkdale was suggested and subsequently turned down on purely economic grounds. I have no doubt that in time with the correct remedial programme bents and fescues will return to the greens at Birkdale and having a free draining rootzone will be a big help. We are all familiar with the recommended process, but we are also familiar with the facts that it can be a long hard road, one that sometimes falls foul from the pressures of irate golfing

In admiration of Tom O'Brien

After reading, with great interest, your article on the remodelling of Royal Birkdale, I felt I must write and express my admiration for the honesty and sheer guts of Tom O'Brien. It takes a special kind of man to admit his mistakes in such a frank manner.

We have all made mistakes, some large and some small. If we are lucky we get away with them, if we are very lucky, nobody notices them. For your mistakes or oversights to be seen and discussed by, who knows?, many millions, is a burden not many men could carry.

Two years ago a very dear friend and colleague of mine took his own life after dam-

age was caused to some of his greens, he felt, wrongly, that he was at fault.

Tom O'Brien can retire assured that our industry is the poorer for the loss of a man of his calibre.

He is right when he says that the club would not spend £300,000 on the greens just because they were cut too short.

His comments on the agronomic advice he received should also make a few people take a long hard look in the mirror.

Enjoy your retirement Tom, you've earned it!

Peter Wisbey, Pinheiros Altos, Algarve, Portugal

members who often wish to forsake the far-off resulting quality of putting green turf for short-term colour and softness (remember the 5 wood syndrome) and regularly comment on the seemingly continuous aeration treatments

I have perhaps been lucky that I find even with a very limited budget and high levels of play, that my greens sustain an ever increasing population of bents and fescues. Am I lucky in applying the right programme of treatments, or being in total control of policy and having no greens committee? I can clearly state that in all areas of performance fescues and bents outperform *Poa* any day. Even this winter my greens have been in play, they have stayed firm and been disease free, so perhaps I am biased against *Poa*. I have also previously seen thatchy, fusarium ridden *Poa* turf removed from a green, closely boxed (thinly cut), the rootzone replaced with the intention of being more free draining and re-contoured and the old *Poa* turf replaced. To this day, probably over 12 years later the green is still *Poa*, prone to disease and remains soft during wet periods, no improvement in performance whatsoever. I sincerely hope Birkdale's results are markedly better.

Paul Copsey, course manager (among other things) at Barnehurst Golf Course, Bexleyheath, Kent

Ultimate challenge?

Your news column last month had a story relating to long holes. We have a 620-yard par 5 (medal tee), 602-yard (yellow tee) par 5 9th hole. Whilst Knaresborough would appear to be longer, bear in mind that the original medal tee, now used as the 18th medal tee position, would have added a further 40 yards to the hole, and the green is surrounded on three sides by a spinney which drops down 10-15 feet almost immediately.

The hole was reduced in length as we felt

that it was too long, bearing in mind the undulations that exist as well. We have had a certificate designed which will be awarded to any player achieving a birdie off the medal tees in competition, and have had about a year's supply (6) printed!

Steve Rumball, Chalgrave Manor Golf Club, Luton (due to open in May)

Rakes' progress

I am writing to inquire if any other golf courses have had the same experience with plastic headed rakes as we are experiencing at Delamere Forest Golf Club.

In 1993 we purchased 75 rakes and had no problems until the frosts, which started in October of last year. We now have 43 useable rakes, as the rest seem to have shattered in use since the onset of hard frosts.

We have contacted the manufacturer who says he is unaware of any problems, and that the plastic manufacturer assured him that the plastic is not at fault. He suggested we must have heavy-handed golfers.

For this reason, would other courses like to inform me if they have such clumsy members and if their plastic-headed rakes have withstood the winter intact.

PN Bertenshaw, course manager, Delamere Forest Golf Course, Cheshire

Just great, Sam

I would like to take this opportunity to thank Samantha Flint at head office for putting on a great ladies programme at the National Conference. Everything from accommodation, meals and especially the trips were great. Thank you very much, Sam, for making it an interesting and very enjoyable few days.

Edna Small

Buyers' Guide

The most cost-effective way of reaching readers of Greenkeeper International. Simply ring Bill Lynch on 091 413 7218, Carol Dutton or Louise Lunn on 0347 838581 and ask about an alphabetical category listing: the cost starts from the equivalent of under £25 per month.

Aerators

AERATORS

Problems with dirty water or algae bloom? Let Otterbine clean-up your lakes and ponds.
The world leader in water quality management.
Available from leading irrigation companies. Full details from:

Golf Course Services

6 Stuart Road,
Market Harborough LE16 9PQ
Tel: 0858 463153 ♦ Fax: 0858 410085

Agromony

PSD AGRONOMY LTD

A COMPLETE AGRONOMIC CONSULTANCY SERVICE FOR THE GOLF CLUB and GREENKEEPER

- Contract Management of Extensions and New Courses
- Site Management and Problem Diagnosis on Existing Courses
- Technical Advice and Support all year round
- Soil and Turf Analysis



For further information contact:
David Stansfield or John Hacker
42 Garstang Road, Preston PR1 1NA
Tel: (0772) 884450 Fax: 884445

All Weather Walkways

ALL WEATHER WALKWAYS

Limit turf damage with a natural woodfibre walkway.

- Free draining
- Soft and quiet tread
- Engineered particle size
- Blends into the landscape
- Expert construction advice

Dormit

For further information please call us on Cirencester (0285) 860781/2

Animal Repellents

FAIRWAYS

DISCREET CONTROL

CONSULTANCY ENVIRONMENTAL SERVICE & TRAINING

Rabbits & Moles ...

Our problem!

SPRINGER HOUSE • WINDMILL LANE

KEMBLE • CIRENCESTER GLOS • GL7 6AN

TEL: 0285 770919

FAX: 0285 770910

SCUTTLE® ANIMAL REPELLENT

Up to ten weeks protection from browsing by rabbits from a single, effective spray application.

For product leaflet and the name of your nearest distributor, call

0734 510033

Fax: 0734 510044

© Fine Agrochemicals Ltd., Worcester WR2 5AA

YOU'RE ONTO A WINNER WITH GREENKEEPER INTERNATIONAL

Find three tiny £50 notes - win a real one, for free!

HERE WE GO with another chance to WIN £50 with Greenkeeper International!

All you have to do is take a look at the £50 note symbol above. Now look through the ads in the Buyers' Guide section and spot THREE of them - they've been reduced in size, but they're there, somewhere!

Write down the names of the three ads where the £50 notes are located and send your entries on a postcard to: Note the Notes Competition, BIGGA, Aldwark Manor, Aldwark, Alne, York, North Yorkshire YO6 2NF, to be received by first post Tuesday, May 24, 1994. The first correct entry drawn after that date will win £50. It could be YOU! Enter today - and Note the Notes!

Judges' decision is final. Not open to BIGGA staff.

★ **Martin Scothern, deputy head greenkeeper from Wollaton Park Golf Club was the winner of our April competition. A few minutes searching through these pages paid off for him - Will YOU be next month's winner?**

Arboriculture



- Tree Spade Hire
- Semi Mature Trees supplied
- Mulches supplied

Ring for colour brochures

Iver, Bucks, SLO 9LA

Tel 0753 652022

Fax 0753 653007

Architects



JONATHAN GAUNT

B.A. (Hons.) Dip L.A.

GOLF COURSE ARCHITECT

From feasibility studies to complete design projects including contract supervision

40C NORWICH ROAD FOREST GATE LONDON E7 9JH

TEL: 081 555 8577 FAX: 081 519 6163

Associate of the British Institute of Golf Course Architects

Artificial Grass

TEETECTOR TEE MATS

The mat with the guarantee Unique heavy duty golf range and municipal mats.

25mm hand finished woven pile. 20mm shock pad.

Professional galvanised and painted frame. Any size, any shape. Double sided.

Free Demo unit available. Trade welcome. Putting surface.

Contact:

Evergreens UK

2 Extons Units Market Overton Oakham,

Leics LE15 7PP

Tel: (0572) 768208

Fax: (0572) 768261



F3 FORCE LEISURE

Worting House

Basingstoke

Hants RG23 8PY

Tel: 0256 811014

- COURSE CONSTRUCTION •

- SYNTHETIC GRASS TEES •

- WINTER GREENS •

- ADVENTURE GOLF •



UNIT 25, COWLING MILL
COWLING BROW
CHORLEY
LANCASHIRE PR6 0QG

Tel: 0257 269983/269069
Fax: 0257 261064

- VERDE TEE FRAME
Steel platform, woven grass top.
- VERDE WINTER TEE
Generous size, self-install kit.
- VERDE DRIVING MATS
Top quality - Long Life - Best Prices.
- ARTIFICIAL GRASSES
- DRIVING BAYS AND NETS
For club and home use.

TWENTY YEARS EXPERIENCE SUPPLYING THE BEST SURFACES AT COMPETITIVE PRICES.
Please call for samples & information

Bacteria



GREEN CIRCLE

The biological way to:

- ✓ Degrade Thatch
- ✓ Increase Root Depth
- ✓ Promote Fine Grasses
- ✓ Reduce Fertiliser Needs
- ✓ Combat Disease

Tel: England/Wales: 081 669 0011
Scotland 0764 683250
Ireland 045 61389

Bark



PATHFORM™
Hardwood Chips

Ring for samples and colour brochure

Iver, Bucks, SLO 9LA
Tel 0753 652022
Fax 0753 653007

M & B SUPPLIES

Walkway Chips,
Softwood Bark - All Grades,
Fertilizers, Composts, Peat,
Horticultural Sundries

Baths Road, Longton,
Stoke-on-Trent
Staffordshire. ST3 2JQ

Telephone 0782 593233

Bridges

TOTAL TIMBER ENGINEERING

HICKSON LEISURE DEVELOPMENTS

BRIDGES
Pedestrian and Vehicular
REVETMENTS
SHEET PILING
SHELTERS

HICKSON LEISURE DEVELOPMENTS
NEW POTTER GRANGE ROAD, GOOLE
NORTH HUMBERSIDE DN14 6XF
telephone (0405) 766060 fax (0405) 768622

Buildings

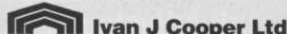


Club Houses Driving Range Buildings

GREENKEEPERS STORES DESIGNED TO INCLUDE:
As Required

- ◆ Machinery Storage ◆ Maintenance Workshops
- ◆ Fertiliser and Weedkiller Storage
- ◆ Offices and Staff Mess Rooms
- ◆ Any other specialist usages

FREE initial designs and costings
PLEASE CONTACT



Ivan J Cooper Ltd
Steel Framed Buildings
Moorside Works, Cauldon Lowe,
Stoke-on-Trent ST10 3ET
Tel: 0538 702282 Fax: 0538 702662

*Tell the industry of your products
and services, through an
advertisement in greenkeeping's
top magazine GREENKEEPER
INTERNATIONAL*

Chemical Disposal

ENVIROGREEN SPECIAL WASTE DISPOSAL SERVICES



For all your
disposal needs for
either full or
empty containers
contact us now.

Tel/Fax 0345
125398

Reg. No. BRK/059342 issued by
Berkshire County Council

Construction

IAN MARTIN and BOB HORNEGOLD

Specialists in Project
Management, Golf Course
Construction, Renovation,
Finishing and Maintenance
Contracts

Tel: (0277) 810616
or (0425) 655586

G.O.L.F LANDSCAPES LIMITED

ASHWELLS ROAD, BENTLEY
BRENTWOOD, ESSEX CM15 9SR

TEL: (0277) 373720
FAX: (0277) 374834

Michael Lowe & Associates



GOLF COURSE DESIGN,
CONSTRUCTION & CONSULTANCY

Design only, complete construction or
any stage in between, including
Drainage.

Pro-Shop, 72 Bryniau Road,
Llandudno, Gwynedd
Tel: (0492) 876878 Fax: (0492) 872420



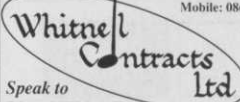
CONTACT THE PROFESSIONALS

Tim Banks, Secretary, BAGCC,
Angel Court, Dairy Yard, High Street,
Market Harborough LE16 7NL.

Tel: 0858 464346

Whitnell Contracts Ltd Golf Course Constructors

Woodlands, Ellis Road
Boxted, Colchester
Essex CO4 5RN
Tel: (0206) 272834
Fax: (0206) 272104
Mobile: 0860 421074



Speak to
Lionel Whitnell



C.J. Collins Construction

Golf Course Contractors

Specialists in complete
construction, or green,
tee, bunker and
drainage refurbishments



Burgess Hill, West Sussex

Tel: 0444 242993
Fax: 0444 247318

Consultancy

David Hemstock Associates

Consultants on:

- Golf Course upgrading
- New Course development
- Specialists in irrigation, drainage, contour and environmental surveys.

Suite 4d, East Mill, Bridgefoot, Belper,
Derbyshire DE5 1XF.
Tel: 0773 827115 Fax: 0773 821083
Mobile: 0850 744957

GREENKEEPER International

To advertise in the industry's
premier European magazine,
call Bill Lynch on 091 413
7218; Carol Dutton
or Louise Lunn
on 0347 838581

Course Accessories

WHY DOES
TACIT'S
FLAGPOLE LAST
TWICE AS
LONG?



THE TOP
SWIVELS



THE BOTTOM
DOESN'T

EAGLES, BIRDIES, FALDOS

Tacit's upright flagpoles
could have the same effect
with your members.

TACIT - Suppliers of
Holecups, Flagpoles and
equipment for
European Ryder Cup 1993
The Belfry.

TACIT

Manufacturers of quality
Golf Course Accessories

Tel: 0788 568818
Fax: 0788 537485

Drainage

SLEATH & SON SPORTSTURF DRAINAGE

Full range of modern equipment providing
UK and European service
Contact Geoff Sleath
Tel: (0709) 862109 Fax: (0709) 862075

AGRIPOWER LTD.

Construction
Drainage
Stone Picking
Verti-Draining

Tel: (0494) 866776



WHITE HORSE
CONTRACTORS LTD
SPORTSTURF
OXFORD (0865) 736272



Golf Courses
and
Sportsfields
★ Drainage
★ Construction
★ Water Mains
★ Fin Drains
★ Approved sand,
gravel and pipe
supplied

Sunnyside, Blairadam, by Kelty,
Fife KY4 0HY
Tel: (0383) 830217
Fax: (0383) 831771

Fertilisers

Sierrablen Turfmix

Controlled Release Fertilizer
with fast start portion

A single application assures
feeding for the whole
growing season.

High Quality, Proven In Practice

Grace-Sierra UK Ltd

High technology in plant nutrition
61 Loughborough Road, West Bridgford,
Nottingham NG2 7LA
Tel: 0602 455100 • Fax: 0602 455311

Golf Course Supplies

Martin Brothers

TOP QUALITY, TOP SERVICE

Distributors of

Cheshire Quality
Top Dressings,
Root Zones and
Tee Mixture

MoneyStone
Bunker Sand
Britain's best,
head and
shoulders above
the rest

Par-Link Red
Pathway Gravel
ideal link from
Green to Tee,
any course
anywhere

24hr ACTION LINE
0625 584571



STRIKE TOP TURF

Merchants to the sports
and leisure trade

The complete range under one banner
- if you require it, we will have it
Fertilisers - all grades and types, loams and dressings,
pesticides, top dressing, Rootzone, cockleshell;
Horticultural and agricultural tools, golf course
equipment, work clothing and much, much more!
Call 061 456 7109 or mobile 0831 639798
for up to date list and quote
40 Offerton Road, Hazel Grove, Stockport,
Cheshire SK7 4NL

Grass Cutting Equipment

SAVE MONEY! 

EX DEMONSTRATION AND TOP QUALITY REMANUFACTURED GOLF COURSE MACHINERY AVAILABLE FROM STOCK

RANSOMES TORO JACOBSEN
RYAN HAYTER BEAVER
sisis CUSHMAN  ROYER
VERTI-DRAIN
 ISEKI KUBOTA

UK & EXPORT DELIVERY ARRANGED
Phone for a full catalogue NOW
GREENSWARD
ENGINEERING COMPANY
Manor Farm, Otley Road, Adel,
Leeds LS16 7AL, England
Tel: (0532) 676000

Irrigation



TURF IRRIGATION SPECIALISTS
We offer full design, installation and After Sales Service
Hortech Systems Ltd,
Hallgate, Holbeach,
Spalding, Lincs PE12 7LG
Tel: 0406 426513

Rain Rotor®

The impact sprinkler for tees, greens and fairways made in Britain by
CRESSWELL ENGINEERING LTD
340/342 Cherrywood Road,
Birmingham B9 4UU
Tel: 021 772 2512
Fax: 021 773 9548

T. & G. TURF IRRIGATION SERVICES
38 Halfpenny Lane, Knaresborough,
North Yorkshire HG5 0NS
Tel & Fax: (0423) 864963
Full member of B.T.L.I.A.

Making sure your Golf Irrigation system isn't a handicap.

Contact: S. Penny
109 Chapel Road, Hesketh Bank, Preston,
Lancs., PR4 6RU Tel: (0772) 813571

Southern Office: N. Ford Tel: (0708) 761717

AQUAPLAST
Putting water in its place

Watermation

Manufacturers, designers and installers of
GOLF COURSE IRRIGATION FOR 23 YEARS
Tongham Road, Aldershot,
Hants GU12 4AA
Tel: 0252 336838
Fax: 0252 336808

I.L.S. for all aspects of
GOLF COURSE IRRIGATION

- Installation • Service
- Extensions and Improvements
- Pumping Systems

I.L.S. Oundle Road
Lutton
Peterborough
PE8 5ND
Tel: Oundle (0832) 272450

IRRIGATION TECHNICAL SERVICES
Approved Toro service centre. All leading manufacturers' equipment maintained and serviced. Contact
Stuart Mills Tel/Fax 0202 874216
43 Pinehurst Road, West Moors, Dorset

A National Irrigation Service

Free consultation and design service

Suppliers of quality products for all types of irrigation

Local installation and maintenance throughout the UK

Specialists in the refurbishment of existing irrigation systems

For further information telephone 0460 241939



Design and service you can trust

PAR 4 (IRRIGATION) LTD 

Installation Sales & Service
N.E. England, Yorkshire,
N. Lincs, N. Derbys, N. & S. Humberside
Contact: E.B. & L. Simms
Tel: (0765) 602175 Fax: (0765) 603488
Par 4, Unit 18, Camphill Close,
Dallamires Lane, Ripon,
N. Yorks HG4 1TT

MIDLAND IRRIGATION
AN INDEPENDENT IRRIGATION COMPANY
2 Fairdene Way, Great Barr,
Birmingham B43 5JS
Tel: 021 358 1246
Fax: 021 357 6789
DESIGN • SUPPLY
INSTALLATION • SERVICE
Full member of BTLIA

B SERVICE 

BELL TURF & IRRIGATION SERVICES

East Midlands Area
Installation, Sales and Service
Everton, Doncaster, DN10 5DR
Tel: (0777) 817410

BRITISH OVERHEAD IRRIGATION LTD.
• Manufacture Equipment •
• Design and Install Systems •
The Green, Upper Halliford,
Shepperton, Middlesex TW17 8RY
Tel. (0932) 788361. Fax. (0932) 780437

Hunter®
The Irrigation Innovators
Gear driven sprinklers including the new golf range available from
S.G.I. Sales
6 Stuart Road,
Market Harborough,
Leics LE16 9PQ
Tel: 0858 463153
Fax: 0858 410085
NOW YOU HAVE A CHOICE!

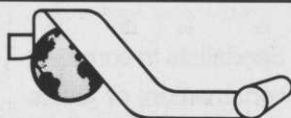
Automatic Watering Systems for Sports and Leisure Grounds
• Designed • Supplied • Installed
GLEN HEAT & IRRIGATION
Pinchbeck, Spalding, Lincs.
Gh Tel: (0775) 722327
Fax: (0775) 725444



Water Quality Control

pH and chlorine control and dosing systems for your irrigation water, for improved turf quality. Nationwide installation and commissioning service, and advice.
Contact Brian Sykes
STRANCO LTD
Commercial Road, Eastbourne,
East Sussex. Tel: (0323) 646163

Lake Construction



GT GROUP
LEAST COST WATERPROOFING OF LAKES AND RESERVOIRS
- using lining membranes and associated geosynthetic materials.
♦ Comprehensive service available to owners/architects/consultants and contractors.
GT GROUP, Nags Corner, Wiston Road,
Nayland, COLCHESTER CO6 4LT
For technical and sales enquiries
Tel: (0206) 262676
Fax: (0206) 262998

Machinery Repairs



HORTICULTURAL ENGINEERS

Service and repairs of all makes of professional grass cutting equipment for the sports and leisure industry
Contact Andrew or Rosemary
Tel/Fax: 0827 284415
Unit 7, Roman Park, Tame Valley Industrial Estate, Wilnecote, Tamworth, Staffs B77 5DQ

Mower Spares

MOWER ACCESSORIES LTD

Manufacturers of high quality lawnmower blades and cylinders. Suppliers of spares and accessories.
65 Forncett Street
Sheffield S4
Tel: 0742 765825
Fax: 0742 765855

Netting



- ★ Germination Sheets
 - ★ Frost Protection Sheets
 - ★ Target Nets
 - ★ Perimeter Netting
 - ★ Ball Stop Netting
 - ★ Rain Covers
 - ★ Mobile and Static Nets
- Available from all good distributors
Longbrook House, Ashton Vale
Road, Bristol BS3 2HA
Tel: 0272 669684

pH Adjustment

High pH?



is a unique source of flowable sulphur for use as a nutrient additive or pH adjuster.

Available exclusively from
Liquid Sod
and its distributors.

Ring 0963 251129 today for more information and your own FREE pH adjuster chart.

LIQUID SOD, LINDEN VIEW,
REDWING ROAD, MILBORNE PORT,
SHERBORNE, DORSET, DT9 5DB

Pumps

GRUNDFOS PUMPS
FOR SPORTS & RECREATIONAL TURF IRRIGATION, BOOSTING AND WATER SUPPLY

Contact our sales offices today for full information on the Grundfos range

SOUTH: (0525) 850000
NORTH: (0925) 813300

GRUNDFOS
GRUNDFOS PUMPS LTD GROVEBURY ROAD,
LEIGHTON BUZZARD, BEDS. LU7 8TL

Railway Sleepers



Hundreds of uses in:
♦ Golf Courses ♦ Civil Engineering
♦ Farming ♦ Landscape Gardening ♦ Fish Farms
♦ Garden Centres

Available in wood or concrete
ASHWELL MAKE IT EASY
♦ Sale, hire or buyback ♦ Choice of new or used
♦ Generous bulk discount ♦ Cutting service
♦ Sale or return ♦ Delivery



Tel: 0375 892576 Fax: 0375 891736
Unit G, Criton Ind. Est., Stanford Rd, Orsett, Essex RM16 3DH

RAILWAY SLEEPERS
8'6" x 10" x 5"
CROSSING TIMBERS
12" x 6" up to 16' long
Price quoted for number required.
Tel (0233) 625121 or 620277
Fagg's Fleet, Whitfield Road,
Ashford, Kent TN23 1TY

Sand/Silica Sand

GRUNDON

NOW SPREADING IN YOUR AREA

Top Dressing
Bunker Sand
Root Zone
Tees Dressing
All Aggregates
Path Gravels
Cockleshell

**NEW HOTLINE NUMBER:
Contact Gordon
on 0367 244078**

Drinkwater Sabey Ltd

(EBENEZER MEARS)

KINGSLEY FINE WASHED SAND
for Tees · Greens · Bunkers
and drainage sands and shingles

Wintersells Road, Byfleet, KT14 7AZ

0932 345616

GARSIDE SANDS

Complete range of dried graded silica sands for all purposes.

Contact John Deavin at
Eastern Way Works,
Eastern Way, Heath & Reach,
Leighton Buzzard,
Beds LU7 9LF
Tel: (0525) 237911
Fax: (0525) 237991

ARC BUCKLAND INDUSTRIAL MINERALS

Sand and Silica Company
**COMPLETE RANGE OF
HORTICULTURAL SANDS**

Contact Lynda Jordan
Buckland Sand & Silica Co.
Reigate Heath, Reigate,
Surrey RH2 9RG
Tel: (0737) 240151

*Tell the industry of your products
and services, through an
advertisement in greenkeeping's
top magazine GREENKEEPER
INTERNATIONAL*

Screeners/Shredders

GRADE ALL

GRADEALL INTERNATIONAL LIMITED
Manufacturers of the **SS100**
Screeners/Shredder



9 Farlough Road, Dungannon,
Northern Ireland BT71 4DT
Tel: 08687 40484 • Fax: 08687 48823

Seats

Gloster

FINE TEAK FURNITURE

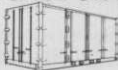


Seats, tables, chairs,
benches,
planters and lit-
terbins made
from plantation
grown teak. Listed in
the Good Wood Guide.
Send for brochure

D-Scan (UK) Ltd Concorde Road,
Patchway, Bristol BS12 5TB
Tel: 0272 315335 Fax: 0272 315334

Secure Storage

SECURE STEEL LOCK-UPS
(Ex Shipping Containers)
FOR SALE OR HIRE



Delivered to your golf club or premises by self
unloading lorries within 24 hours (Mainland UK)
10' x 8', 20' x 8' and 40' x 8' insulated or uninsulated.
IF YOU NEED ECONOMIC SECURE STORAGE

RING NOW FOR PROMPT
EFFICIENT SERVICE
LAWRENCE CONTAINERS
Tel: 0622 820308
Fax: 0622 820300

Tee Mats

MATEEK
Tee Mats

**GOLF COURSE -
DRIVING RANGE
TEE MATS & FRAMES**

Tel: 0291 625351
Fax: 0291 628203

TUFTURF

ARTIFICIAL GRASS TEE MATS,
DRIVING RANGE MATS AND
PUTTING SURFACES FROM

CARPETITION LTD

14 Kaffir Road, Edgerton,
Huddersfield HD2 2AN

Tel: (0484) 428777 Fax: (0484) 423251

Timber Structures

TIMBERMAT

Protect your greens from heavy
machines - hire Timbermats.
Phone 061 476 6252 Fax 061 476 6253
NATIONWIDE SERVICE

Tree Planting

**GOLDSMITH
TREES &
LANDSCAPES**



Specialists in growing,
supplying, planting
and moving of

TREES

Crown Nursery, High Street
Ufford, Suffolk IP13 6EL
Telephone: 0394 460755

Tree Planting Service Large Grants Available

Eamonn Wall & Co.
Woodland Design and Management
22 West Burnside, Dollar
Tel: 0259 743212



**Eastcote
Nurseries
(Solihull) Ltd**

- ★ Tree Spade hire
- ★ Tree moving
- ★ Semi mature trees

Nationwide service
Hampton Road, Barston, Solihull,
West Midlands B92 0JL
Tel: 0675 442033
Fax: 0675 442324

Trenchers

TRENCHERS FOR HIRE

Width: 15cm-30cm
Depth: up to 122cm

Trenchex Plant Sales
Tel: 0889 565155 Fax: 0889 563140

CASE TRENCHERS

TRENCHEX PLANT SALES
Dove Fields, Uttoxeter, Staffs.
Fax: (0889) 563140.
Tel: (0889) 565155

Turf

**THE ULTIMATE
SAND-BASED
GREENS/TEES**
SAVANA TURF GROWERS LTD
SAVANNA TURF GROWERS LTD
NEWMARKET, SUFFOLK
Fax: 0838 560555
(0638) 560111
618000

TILLERS

Growers of high quality turf supplied
nationwide in standard and big rolls
Tel: 0652 650555 • Fax: 0652 650064

INTURF

GROWERS AND SUPPLIERS OF HIGH
QUALITY CULTIVATED TURF FOR ALL
APPLICATIONS AND APPOINTED
OFFICIAL TURF PRODUCERS
TO WEMBLEY STADIUM

Please contact Head Office for more information:

THE INTURF GROUP

Regent Street • Pocklington • York YO4 2QN
Telephone 0759 304101 • Fax 0759 305229



Grasslands

Specialist Seed Grown. Turf Producers
Covering the SOUTH EAST.
Grasslands Turf Farm, Ashford Road, New
Romney, Kent TN28 8TH. Tel/Fax: (0679) 67130

**SOVEREIGN
TURF**

Growers of consistent quality turf in
either big or small rolls for landscapers,
amenity users and golf courses

Tel: 0728 688 984
Fax: 0728 688 949

Fir Tree Farm, Blaxhall, Woodbridge,
Suffolk IP12 2DX

TURF GROWN TO YOUR SEED SPECIFICATION

or from our stock
ALL GROWN IN STERILE
COMPOST
Supplied nationwide

GREENKEEPER LTD,
Shelford Manor, Shelford,
Nottingham NG12 1ER

Tel: 0949 21144
Fax: 0602 862139

Tip Top Turf.

Seed grown turf available in one sq yd
or large 25 sq yd rolls with laying
machines or service available.

Tel: 0908 207071 • Fax: 0908 374889

**CUCKMERE
VALLEY
TURF FARMS**

Specialist turf producers
for the South East

Common Lane, Berwick,
Polegate, East Sussex BN26 6SU

Tel: 0323 870773
Fax: 0323 870285

Turf Dressings

ARENA

■ Sportsturf Ltd ■

South - Tel: (0823) 432231 Fax: (0823) 432231
North - Tel: (0229) 465555 Fax: (0229) 465555

- ★ Top Dressing ★ Root Zone Mix ★
- ★ Screened Soil ★ Sands ★
- ★ Construction ★ Cockleshells ★

**BL BOUGHTON
LOAM LTD.**

For
TURF DRESSINGS
ROOT ZONE MIXES
SCREENED TOP SOILS
BUNKER SANDS
HORTICULTURAL
COMPOSTS

Telford Way, Kettering,
Northants
Tel: 0536 510515

**GREENBASE
ECOLOGICAL LIMITED**

The ProBase range of Products
for Turf Dressings and Construction
materials. Lightweight. User friendly
and economical

Tel: 0427 811738 • Fax: 0427 810405

Turf Dressings

Rufford

TOP-DRESS SUPPLIES

Britain's No. 1 for
QUALITY • SERVICE •
SHEER VALUE FOR MONEY

Fairway House, South Stage, Broadway,
Salford Quays, Manchester M5 2UQ
Tel: 061 877 8550 Fax: 061 877 8554



**BAILEY'S
OF
NORFOLK**
supply

**Professional Turf Dressings
for the Profession**

GOLF TURF DRESSINGS
Approved formulations for use in
Construction and on the finest greens,
tees and fairways.

SAND
All requirements catered for including
lime free. Kiln dried sands available.

SCREENED TOP SOIL
Including the finest Black Fenland Soil.
Screened loams to customers'
individual specifications.

We also produce and supply root zone
mix and always have vast stocks of
cockle shells for immediate delivery

DELIVERIES NATIONWIDE

BAILEY'S OF NORFOLK

Brick Kiln Road, Hevingham,
Norwich, Norfolk NR10 5NL
Tel: 060 548 607
Mobile: 0860 661603

FEN TURF DRESSINGS LTD

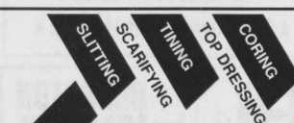
for Fendress Top Dressing

- Fendress Superfine
- Economy Dressing
- Rootzone Mixes
- Screened Fensoil • Screened Peat
- Screened Loam • Kiln Dried Sand
- Bunker Sands



Tel: (0858) 464346/433003
Fax: (0858) 434734

Turf Maintenance



PROFESSIONAL TURF
MAINTENANCE AND RENOVATION
EQUIPMENT AVAILABLE FOR HIRE

J. WOOD & SON

(BILSDALE PLOUGHS) LTD
Tel: (0377) 253313 Fax: (0377) 257465
DRIFFIELD • RYEDALE • YORK

Tyres

Sam Moreton & Sons
TURF TYRE

Turf Tyres of all makes to fit
any machine. Wheels made to
customer requirements.

Enquiries 0926 632269

Fax 0926 632023

Orders 0926 613737

Nationwide delivery service

Vertidrain Hire

**MIDLAND TURF
AERATING SERVICE**

- ★ Verti-Draining ★ Hollow
Coring with Ryan GA30
- ★ Core Collector ★ Deep
Slitting ★ Top Dresser
- ★ Over-Seeder
- ★ Tractor Hire
- ★ Competitive
prices ★ Professional
nationwide service.

Tel/Fax 0922 417567
Charles Frost

ROSS OLIVER
SPORTS GROUND CONSTRUCTION
AND MAINTENANCE

- VERTI-DRAIN for Greens and Sportsgrounds
 - STONE PICKING • RYAN HOLLOW TYNER
 - SAND SPREADERS • DIRECT DRILLS
- Greystones, Trebudannon, Cornwall TR8 4LP.
Tel: (0841) 540222 Fax: (0637) 881057

PETER MANNINGTON



Specialist Verti-Drain Contractor for the South
For greens, tees, fairways and sportsgrounds
Experienced operator, competitive prices and reliable service

Phone Peter on 0580 200205
or Mobile 0850 612061

Sheepwash Farm, Church Street, Ticehurst,
Wadhurst, East Sussex TN5 7DL

PARKER HART

Verti-draining, hollow coring,
conventional and hydro-seeding
throughout the South East

Complete range of turfcare
machinery available for hire

- Competitive rates
- Reliable equipment
- Experienced operators

Call Karen or Anne
081 337 7791



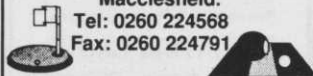
VERTIDRAIN MACHINES FOR
FAIRWAYS AND GREENS
AVAILABLE FOR HIRE

Contact: Peter Holmes, 10 Carson
Road, Gainsborough, Lincs DN21 2RE
Tel: 0427 613035
Mobile: 0831 359394

Richard Campy

For vertidrain, hollow
coring, scarifying, and
overseeding requirements.
1.5m and 2.5m vertidrains
Greencare Corers
Charterhouse Vertiseed

Marton Hall Lane, Marton,
Macclesfield.
Tel: 0260 224568
Fax: 0260 224791

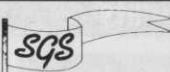


**HERONFIELD
HIRE**

(Solihull)

Vertidrain, Moore Sportsfield
Over-Seeders, Verti
Over-Seeder for Greens & Tees,
Toro Aerators, Case Trenchers
& Sportsfield Slitters etc.
Contact: Doug or Ron Johnson
Tel: (0564) 772597

Fax available



- ◆ Verti Drain Hire ◆ Hollow Coring
- ◆ Deep Spiking ◆ Tractor Hire
- ◆ Full range of Landscape
Equipment

YORKSHIRE'S ONLY AGENT FOR 'WIEDENMANN TERRA SPIKE'

SPEN GROUND CARE SERVICES

Unit 7, Valley Road, Liversedge,
West Yorkshire WF15 6JY
0924 401522 • 0836 722080

**WORTH
DRAINING**

VERTIDRAINING and
HOLLOW CORING HIRE
with the G.A. 30

Contact Peter Bloodworth
WORTH DRAINING
Cornbecks Farm, Irtham, Grantham,
Lincolnshire Tel/Fax: (0476) 550266

SEWARD
TURF MAINTENANCE

CONTACT THE PROFESSIONALS
Ten years experience using only the best
2 greens verti-drains
(18 greens in 2 days)
Half-inch lines at 2x2 spacing
Fairway verti-drain
Coremaster complete with collector
Fairway overseeder
Contact Michael Seward
York (0904) 765949 night or day

E&S SPORTSGROUND CONTRACTORS

We're No. 1 for Vertidrain and
Hollow Coring on Greens, Tees
and Fairways.

For competitive rates and a
professional service, contact

RICHARD VEITCH
0734 795454

The Fairways, King Street Lane, Winnersh,
Wokingham, Berkshire RG11 5AX
Fax: 0734 795353

Weed Killing



**WEED
FREE**
(BRACKNELL)

Professional Weed Killing &
Associated Turf Services

MIKE SEATON F.Inst.G(Dip)

Tel: (0344) 481011

Fax: (0344) 300052

Mobile: (0850) 300104

You're at the end of the
Buyers' Guide section - if
you haven't found the ads
with the 3 symbols in yet,

TRY AGAIN:
IT COULD BE WORTH

£50

Classified

Machinery For Sale

FOR SALE

Charterhouse Bulk Top
Dresser 18 months old,
never used: £7,500

Charterhouse Overseeder
18 months old, never used:
£4,000

Tel: 0676 22393

G E Adamson Grass Machinery

Ransomes 3 set Magna or Sports trailed
- new cylinders£2200
Ransomes Certes 20" new engine, cylinder & box£975
Lloyds 21" Paladin 8 blade£975
Kubota G1900 diesel-4 wheel steer 48R/D ride-on
mower£3250
John Deere 655 diesel compact tractor c/w 50"
mid-mounted cutter deck - new turf tyres£3250
- spool valves£2500
Isaki SG15 diesel 48R/D ride-on mower£2500
All prices inclusive of transport but subject to VAT.

Tel/Fax: 0995 640180

For Sale

**TEMPORARY
CLUBHOUSE
FOR SALE**
80' by 30'

Flat roof with
administration block,
ladies and gents
cloakroom, kitchen and
lounge. New roof laid
December '93.

Mounted in 10 foot
sections. Offers invited.

Tel: 0494 871277

Fax: 0494 874692 or write
to Chalfont Park Golf
Club at Bowles Farm,
Threehouseholds,
Chalfont St Giles,
Bucks HP8 4LW

Richard Campy

Toro GM3000D 1993
c/w 9 blade SPA greens units and turf
groomers. This excellent machine has
only worked 325 hours and is in
excellent condition. £9,950 +VAT

Lesco 300D 2WD
c/w greens units and groomers.
72 hours worked, in as new condition.
£10,250 +VAT

Other mowers, tractors and turf
maintenance equipment available

Tel: 0260 224568
Fax: 0260 224791



**QUALITY REBUILT
GROUND CARE MACHINERY**

- ★ Gang Mowers ★ Triple Mowers
 - ★ Cylinder Mowers ★ Aeration
Equipment ★ Scarification &
Collection Equipment ★ Nationwide
Delivery, Export by Arrangement
- EFG GARDEN MACHINERY**
Tenterfields Business Park,
Luddendenfoot, Halifax HX2 6EJ.
Tel: 0422 882165
Fax: 0422 886014