

NEW PRODUCTS LAUNCHED AT THE 1994 SHOW

■ Rhone-Poulenc launched a systemic fungicide called Vitesse (French for 'speed'). It is being promoted as the only systemic which starts working immediately on contact with the turf. Product manager Sion Price said: "It is the only turf fungicide with the powerful double action of two active ingredients – carbendazim, a systemic fungicide which is rapidly taken into the plant to give protection from within, and iprodione, a proven contact action fungicide which forms a protective layer against disease attack." Vitesse is recommended for application during the growing season and is designed to combat a range of turf diseases including fusarium patch, red thatch, Timothy leaf spot and anthracnose. Tel: 0277 301115

■ Barenbrug's head of breeding, Gerard van 't Klooster, the man behind top varieties such as Barcrown, Baruba and Bargreen, introduced his latest creations – slender fescues Barlander, Barlotte and Barskol, and Chewings fescue Baroxi. Tel: 0359 70766

■ SISIS Equipment showed two new products – the SISIS Autospred for greens and tees and the SupaTurfman, a wider version of the AutoTurfman. The Autospred is powered by a 5hp engine, has a hopper capacity of 0.26m³ (9ft³) and a spreading width of 83cm (33ins). The hopper is plastic coated to resist corrosion and the main wheels are 'slicks' to reduce ground marking. The SupaTurfman is a heavy-duty aerator with a working width of 355mm (14ins). A new feature is the incorporation of quick release fasteners permitting the tines to be changed without spanners. The SupaTurfman is powered by a 5hp petrol engine. Tel: 0625 503030

■ Kubota's latest compact tractor, the 30.5hp ST-30, took pride of place on its stand. Designed and developed specifically for grass cutting, it weighs 875kg, is 2720mm long and has a 1600mm wheel base. Power comes from a



Simon Hannam, a technical adviser with the Inturf Group shows off the company's latest installation machine. The lightweight machine has a synchronised feed which places the turf precisely onto the rootzone irrespective of the forward speed of the machine. The TIM system is operated by Inturf's team of greenkeeping staff as an in-house service. Tel: 0759 304101

four-cylinder diesel engine. The lift capacity of the £12,200 plus VAT ST-30 is 800kg.

■ Turfmech Machinery has added a rear-mounted blower to use with compact tractors. The TM300 is designed for clearing leaves, litter and other debris. Price is £1,870. Tel: 0889 271503

■ Hayter introduced two new hydraulic trailed gangmowers – the five-gang TM529 and the seven-gang TM729. Both are fitted with large specification tyres which allow towing speeds of up to 50mph, although there is a legal limit of 20mph on the larger TM729. These units also have suspended axles which isolate and protect the heavy-duty chassis and all moving parts from ground generated loading. Other features include a separate hydraulic pump for the lift system, an automatic valve which stops the cylinders when a cutterhead is raised. Hayter also introduced a triple ride-on mower, the Beaver T224, and a hydraulic five gangmower, the TM520. Tel: 0279 723444

■ John Deere was showing off three new machines – a lightweight fairway mower, a diesel-engined version of the 2243 greensmower and a two-seater utility vehicle. John Deere claims its new 32hp 3235 fairway mower offers "twice as much power to the reels as competitive makes, and the highest rate of clip on the market". Height of cut can be adjusted from 3/8 to 1 3/8in or 3in. The new 2243 greensmower is aimed at greenkeepers who have large areas of greens that need to be mown daily. This machine is equipped with three 22in, 5in diameter, nine-blade offset cylin-

ders which cut the tracking wear on greens caused by regular mowing by 50 percent, according to the distributors. This is done by changing the direction of travel on alternate days. Height of cut can be varied from 3/32 to 3/4in. For all load-carrying operations there are the John Deere Gator 10hp 4x2 and 18hp 6x4 utility vehicles. Ground pressure is said to be 7psi at full load. Their respective payloads/towing capacities are 408kg/340kg and 544kg/544kg. Both models feature Kawasaki petrol engines.

■ Hardi launched the Brush Master, which has been on extensive trials on golf courses in southern England during the past 18 months. It is designed for switching (dew removal) before play commences, brushing in after normal applications of top dressing, and filling in holes after coring and top dressing. Price is £1995 plus VAT. Hardi also exhibited its new range of trailed turfcare sprayers called Uniflex. The Uniflex trailed chassis is designed to suit tank sizes of 200 and 300 litres whilst still providing low ground pressures due to wide wheels. Prices from £2200 plus VAT. Tel: 0455 233811

■ Two new Victa products were shown on the EP Barrus stand. The PRO500 is an 18in steel deck push-along mower featuring Victa two-stroke engine and a disc and two swing blades to protect the crankshaft. Price: £287 plus VAT. The VP44P brushcutter has a 40cc engine, Sure-Tap professional head which controls the length of cutting line released when the centre knob is tapped and two-stage anti-vibration handles. Price: £379. Tel: 0869 253355

■ Sports Ground Irrigation exhibited the new valve-in-head golf models from Hunter Industries and the full range of PGM lawn sprinklers with colour coded nozzles. Also on show was a new version of the CIC 1 controller. Tel: 0858 463153

■ Jacobsen launched a new Autofertil grass cuttings recycling system. This system enables grass cuttings to be reused as fertiliser and nutrient for courses, completing the biomass cycle and doing away with unsightly mounds of grass cuttings. Two sizes of machine are available. Jacobsen also introduced a new systems vehicle available in two models with either a 23hp Kubota diesel engine or 34hp Ford petrol engine, both giving a 2800 lb total rated capacity. Tel: 0536 417777

■ Sharpes International launched its 1994 booklet featuring two new varieties – Elegana, a perennial ryegrass, and Miracle, a smooth stalked meadow grass. Tel: 0529 304511

■ Symbio showed its new product, Green Circle, which "reduces fertiliser applications and reduces or eliminates the need for fungicides". Symbio uses 'Biofixation', a process whereby the bacteria and microscopic fungi found in healthy soils are fixed onto a specially developed natural mineral support. The microbes in Green Circle are claimed to break down fibrous thatchy material thereby improving drainage through the sward. Consequently the nutrients released by decomposition are fed down into the rootzone, stimulating deeper root growth. Tel: 081 669 0011.

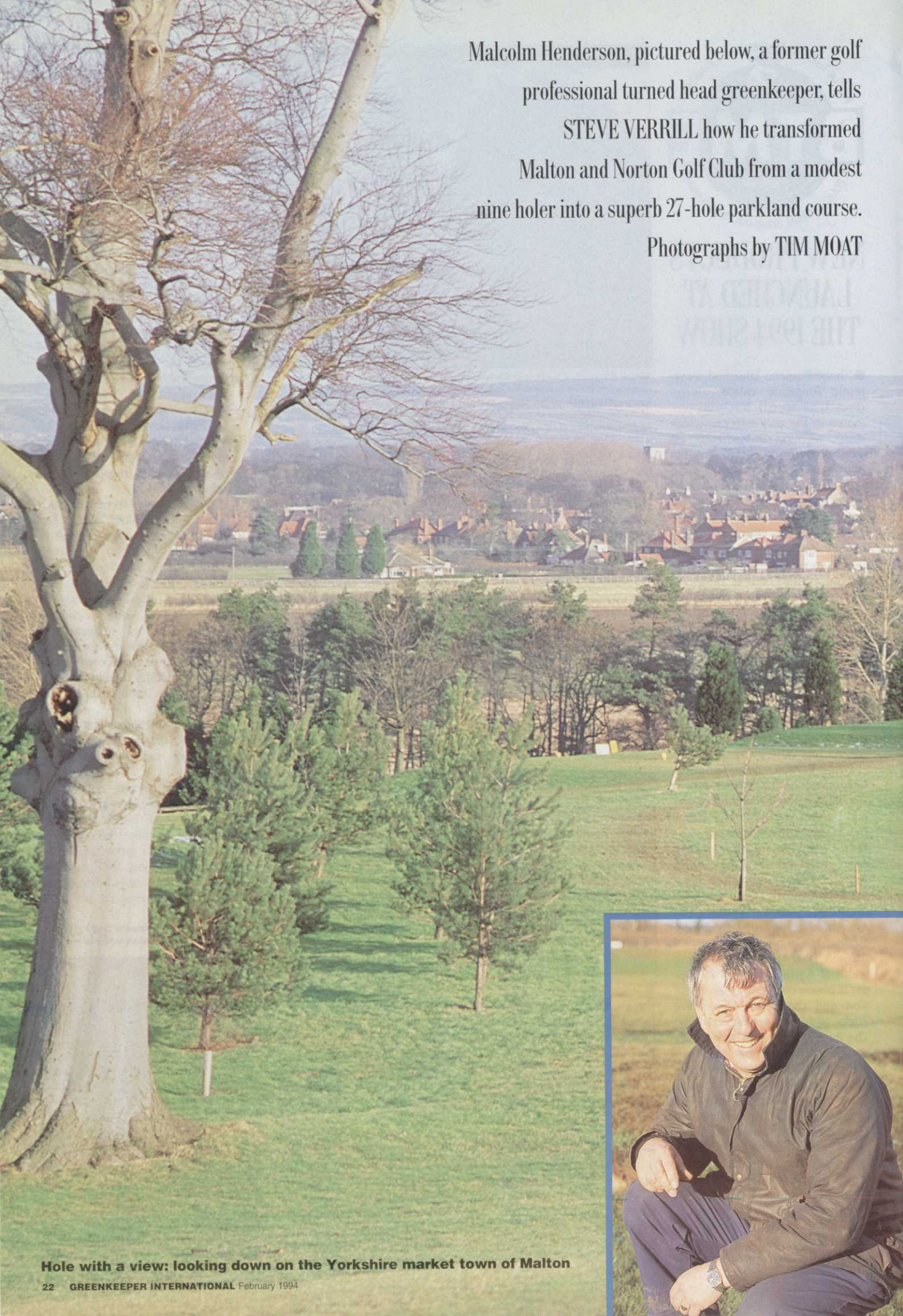
■ Land and leisure consultants ADAS were offering golf clubs six-monthly course 'health' check-ups. They will examine the course to pinpoint trouble spots and log the results in a report. The project is designed as an early-warning system for club managers. Tel: 0623 846742.

■ Below: Philip Langdon and Peter Madden on the Watermat stand



Malcolm Henderson, pictured below, a former golf professional turned head greenkeeper, tells STEVE VERRILL how he transformed Malton and Norton Golf Club from a modest nine holer into a superb 27-hole parkland course.

Photographs by TIM MOAT



Hole with a view: looking down on the Yorkshire market town of Malton

Malcolm's YORKSHIRE



Nestled in a corner of North Yorkshire more famous for its racehorses than golf courses lies a remarkable greenkeeping success story.

Every greenkeeper worth his salt would leap at the chance to design his own course but sadly few ever get the opportunity. Usually it is the greenkeeper who has to make the best of someone else's baby be it beautiful or otherwise.

So Malcolm Henderson, head green-

keeper at Malton and Norton Golf Club, can – and does – count himself a fortunate man. Malcolm's design skills have turned what started life as a modest nine holer into a superb 27-hole parkland course.

Malcolm must rate as one of BIGGA's more unusual members because he is also a qualified professional golfer and until three years ago was employed as both club professional and head greenkeeper.

Yet despite his playing talents, Malcolm's

first love has always been greenkeeping, a vocation which gives him immense satisfaction.

Job satisfaction can manifest itself in a variety of ways but for Malcolm it comes from seeing golfers out enjoying the fruits of his labours.

Malcolm, 51, learned his greenkeeping trade as an eager 15-year-old at the illustrious and exclusive championship course at Ganton near Scarborough. But tending

Martin Brothers

Martin Brothers (UK) Ltd can supply all of your spring maintenance requirements, all at competitive rates and to any club in the UK mainland.

- ❖ CHESHIRE fine turf dressings
 - ❖ CHESHIRE rootzone mixtures
 - ❖ PAR-LINK red footpath gravel
 - ❖ MONEYSTONE bunker sand
- from the only authorised distributor

FOR MORE INFO RING 0625 584571

"OUR SERVICE IS THE BENCHMARK FOR THE INDUSTRY"

AD
REF
12



NATURE *first*

TREE MOVING

Transform your course quickly and economically by transplanting your own large trees.
Tree spaders of all sizes available.
AGENTS FOR WYEVALE NURSERIES

For free site visit and advice

Contact:

MARTIN BROMAGE

PHONE 0452 731199 FAX 0452 731131
WOOD LANE NURSERY, DOWN HATHERLEY, GLOS

AD
REF
433

FOR *Green* GOLF GREENS AND
FAIRWAYS

turn to the experts

Supaturf

SUPATURF PRODUCTS LTD
AMENITY HOUSE - 2 MAIZEFIELD - HINCKLEY FIELDS INDUSTRIAL ESTATE
HINCKLEY - LEICESTERSHIRE LE10 1YF FOR FURTHER DETAILS
Tel: (0455) 234677 or Fax: (0455) 234714

AD
REF
164



**THIS GIRL
IS NOT
PROPERLY
DRESSED**

**MAKE SURE
YOUR
GREENS ARE!**

**Quality Top Dressings, Root Zones,
Cockleshell Pathways**



**Phoenix Pathways and
Construction Supplies**

95 Market Street, Dalton-in-Furness,
Cumbria LA15 8DL Tel: 0229 468001
Fax: 0229 468002

AD
REF
447

'He has carved out a layout for the thinking golfer'



greens and playing on them ran hand-in-hand in Malcolm's youth and after passing his PGA examination at Lilleshall he was appointed as professional/head greenkeeper at Malton and Norton.

Among his first tasks was to design and build a new nine holes, which are now the front nine, aided by the late Malcolm Roberts, chairman of the greens committee.

That this first venture was a success is there for all to see and the fact that the club is attracting record numbers of visitors is a testament to this modest greenkeeper's artisan artistry.

He has carved out a layout for the thinking golfer from the heavy Yorkshire meadowland

constructing a course that many a famous designer would be proud to put his name to.

It kicks off with a marvellous 564 yard par five and sweeps up and over the rolling countryside providing not only challenging golf but a panoramic vista across Malton and along the Vale of York. Greens are big and slick, despite having to work with some of the coarser meadowland grass varieties, and the course is studded with impressive mature chestnut and oak trees.

Such has been the popularity of the course that Malcolm was called upon three years ago to design a further nine holes with the assistance of greens committee chairman Bob Mansell.



The brief for the new nine was to match the class and excellence of the existing 18 with a budget of around £8,000 a hole. The job was duly completed to budget and the new course opened for three months last

Heriot & Bardot

Favourite bentgrasses for fine, close grown turf outscore* the usual

Although 'Highland' browntop bent is generally acceptable for most UK situations, for very fine turf such as golf and bowling greens the STRI now advises finer and denser cultivars like Heriot and Bardot.



HERIOT 7.7

BARDOT 6.5

HIGHLAND 4.8



Barenbrug UK Ltd
PO Box 2, Rougham Industrial Estate,
Bury St. Edmunds, Suffolk IP30 9NW
Tel: 0359 70766 Fax: 0359 71021

* The STRI 1994 list shoot density figures.



THE DEEP DRILL SERVICE FOR SPORTS TURF

Why suffer turf problems associated with compacted soil?

Our Deep Drill machine will create a pattern of sixty 3/8" holes, up to 10" deep, on a 5" spacing, in one movement, leaving an unmarred surface.

RESULTS IN • Relief of compaction • Improved aeration and percolation of water to the root zone • Deeper, wider and more vigorous root development • Holes offer a way of introducing fresh media to the soil • Healing time of three to four days • Drills through dry patch.

BENEFITS WITHOUT SIDE EFFECTS FOR
 GOLF FAIRWAYS, GOLF TEES, GOLF GREENS, RUGBY PITCHES,
 BOWLING GREENS, HOCKEY PITCHES, CRICKET SQUARES,
 CROQUET LAWNS, AND FOOTBALL PITCHES



C & P SOILCARE LIMITED, Unit 3, Bush Farm, Nedging, Ipswich,
 Suffolk, IP7 7BL. Telephone / Fax: 0449 741012
 Mobile telephone: 0860 493521

AD
REF
46



summer and will go full time this spring.

The course was hewn from an unappetising piece of land – part agricultural, part jungle. It now bears Malcolm's trademark of large undulating greens and big impressive tees with plenty of space for the daily repositioning of tee markers.

The new nine involved the improvement of two ponds and provided the opportunity to bring about Malcolm's favourite innovation – a superb Watermation system. The whole course is kitted out with the computerised watering system which incorporates Malcolm's pride and joy – a pump and filtration system which automatically draws water out

Sierrablen™ Turfmix

Controlled Release Fertilizer with fast start portion

Year round fertilisation for all types of turf!



	Golf Tees, Fairways, Approaches. New Course Construction	Golf and Bowling Greens	Sportsfields
Spring/Summer fertilisation	Sierrablen™ Turfmix 28+5+7+Fe 5-6 months	Sierrablen™ Mini 22+3+7 5-6 months	Sierrablen™ Turfmix 28+5+7+Fe 5-6 months
	Sierrablen™ Turfmix 27+5+7+Fe 8-9 months		Sierrablen™ Turfmix 27+5+7+Fe 8-9 months
	Osmocote® N 39+0+0 5-6 months		Osmocote® N 39+0+0 5-6 months
Autumn/Winter fertilisation	Sierrablen™ Turfmix NK 15+0+22+Fe 5-6 months		Sierrablen™ Turfmix NK 15+0+22+Fe 5-6 months

Sierrablen™ Turfmix and Osmocote® N
 Controlled Release Fertilizers assure:

- Feeding for the whole growing season
- Even colour and growth
- Labour saving
- Cost effectiveness
- Minimal leaching

GRACE SIERRA

High technology in plant nutrition

For more information, including
 specific recommendations for your
 turf, get in touch with:
 Grace-Sierra United Kingdom Ltd.,
 Freepost Nottingham NG2 1BR,
 Tel.: 0602-455100.
 Fax: 0602-455311.

AD
REF
161

Sierrablen™ and Osmocote® are registered trademarks of Grace-Sierra Horticultural Products USA.

'Tree planting programme is now paying dividends'

of a naturally supplied pond and replenishes storage tanks some 1000 metres away. "It really is a fabulous system. It allows me to programme all the various stations, either greens or tees, to come on at whatever time I want for a duration of up to 99 minutes," said Malcolm.

"My usual set-up is for the system to start at 1am for five or six minutes at each station and because the pump starts two minutes before the start time the water pressure is the same for each green or tee.

"The system was installed by T and G Installation Services of Ripon at a total cost of £40,000 but it has proved to be a great investment and has certainly paid for itself over the last couple of years."

While on the topic of good investments, the club's tree planting programme has also started to pay dividends. About 60 trees which were planted more than 10 years ago have recently been transplanted throughout the new course giving a mature feel which belies its infancy. In the best Yorkshire traditions the exercise also saved the club at least £12,000 with trees costing less than £2 at planting now worth more £200 each.

"It has worked a treat and is such a simple operation. We used a contractor to transplant the trees and the whole operation took just four days in total," said Malcolm.

"Three hydraulic spades are slipped underneath each tree, it is then lifted out and dropped into a pre-dug hole. So far it looks to have been 100 per cent successful."

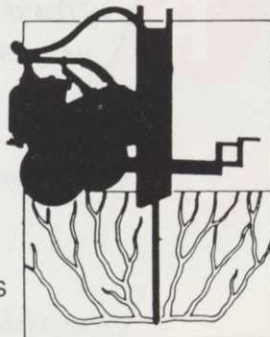
One tip is to make sure you incorporate a water feeder pipe down to the roots. Malcolm gives each tree about 40 gallons of water once a fortnight during drier conditions.

"I can certainly recommend transplanting. It allows you to do the impossible and actually buy in time to give the course maturity." ➔

COMPACTION? POOR DRAINAGE? POOR GROWTH?

Are you experiencing any of these problems with your **SPORTS FIELD, GREENS, CRICKET SQUARES, LANDSCAPES, TREES?**

Call for the
TERRALIFT
Use the **TERRALIFT**
SUB-SOIL
RESTRUCTURING
SERVICE



The **TERRALIFT** also incorporates soil conditioners and root feeds trees. The probe can reach 1m or 1.5m depths.



SOILCARE

**C & P SOILCARE LIMITED, UNIT 3,
BUSH FARM, NEDGING, IPSWICH, SUFFOLK.**
TELEPHONE/FAX: 0449 741012

Recommendations, demonstrations and free site visits available.

AD
REF
46

**Britain's
leading
Top Dressing
supplies**

All Seasons Dressings

Top Dressings • Sands • Top Soils • Fen Soil.
Suppliers of Soils for Golf Courses.



TOP DRESSING
Grade 1, 2, 3 to a high specification

ROOT ZONE MIX
Individual mixes USGA specification, Lime free sands used

SCREENED SOIL
3mm and 6mm Screened soil for divoting and construction. Naturally organic

SANDS
Free draining. Lime free sands for bunkers and top dressings

CONSTRUCTION
Tee and Green construction undertaken by our own professional tradesmen

We at **ALL SEASONS DRESSINGS** have researched long and hard to achieve a Top Dressing to a very high quality product. All our soils and sands are tested by local agronomists and chemists to obtain the best results for your greens and tees.

WE ARE CURRENTLY SUPPLYING A LARGE NUMBER OF CLUBS IN THE SOUTH OF ENGLAND. LISTED BELOW ARE JUST A FEW:

- ▶ ASHFORD MANOR GC
- ▶ WOBURN GC
- ▶ SUNNINGDALE GC
- ▶ SUNNINGDALE LADIES GC
- ▶ FOXHILLS GC
- ▶ WEST HILL GC
- ▶ WORPLESDON GC
- ▶ WOKING GC
- ▶ EFFINGHAM GC
- ▶ PETERSHAM PARK GC
- ▶ HURTMORE GC
- ▶ WAVERDON GC

- ▶ COOMBE HILL GC
- ▶ PURLEY DOWNS GC
- ▶ CROHAM HURST GC
- ▶ SELSDON HOTEL GC
- ▶ SURBITON GC
- ▶ MALDEN GC
- ▶ ROYAL MID SURREY GC
- ▶ WYKE GREEN GC
- ▶ THE DRIFT GC
- ▶ MANNINGS HEATH GC
- ▶ SINGING HILLS GC
- ▶ OAKES PARK GC

▶ **GUARDS POLO CLUB (SMITH'S LAWN)**

Altogether we have about 167 Clubs that are more than happy with our products, from top dressing to root zone, so phone us today – you will be surprised at our prices and more than happy with the product.

119 London Road, Kingston upon Thames, Surrey KT2 6NH.
Telephone: 081 546 3960 • Mobile: 0831 871939 • Fax: 081 547 1923

AD
REF
375

What's in a NAME?

Rufford No.1, No.2, No.3 and
now Super 1742 topdressings

Uniform particle size

Fine soil and silica sand

Free draining, lime free sands

Organic screened and
shredded soil

Root zone mixes which can
meet USGA specification

Delivery within 48 hours

THAT'S WHAT'S IN OUR NAME

For more information on the Rufford range
of Topdressings and Rootzones, contact:

Rufford FAIRWAY HOUSE
BROADWAY
SALFORD QUAYS
MANCHESTER
M5 2UQ
TOP-DRESS SUPPLIES LTD

TEL: (061) 877 8550

FAX: (061) 877 8554

'Investment in drainage has made my life easier'

Shortly Malcolm and his four strong team will begin their spring maintenance programme in earnest, the biggest job being the spreading of about 80 tons of Rufford top dressing on the greens.

The Malton course is built on a heavy sub soil which can cause drainage difficulties so the greens get a good dose of sand.

"We slit the greens every month in winter to about seven or eight inches to aerate and aid against compaction and every other year we vertidrain but that was carried out last year. Once the greens have been deep slitted we shall spread up to four tons of dressing made up of 50 per cent sand and 50 per cent soil on each green.

"We use a Sisis green slitter on the back of a compact tractor and then once the dressing dries we brush it in. Usually the whole process takes about four hours per green.

"The greens are principally meadow grass because they were cut out of the fields at the turn of the century and we have just kept on with them. It is rougher grass than we would like. We haven't the finer grass that new courses have but we use turf groomers on the back of Jacobsen machines everytime we cut which helps the grass grow finer."

Once the growing season starts, usually mid-April, Malcolm will treat the greens and approaches with a mixture of lawn sand and moss killer. Tees will be repaired where necessary and those on the short holes will be top dressed.

Fairways will get a little pick-me-up in April from an outfield fertiliser and any bare patches will be turfed over.

Malcolm explained that an investment in drainage had made his task easier. "Flooding of fairways was quite a problem until about eight years ago when we installed plastic drainage system backfilled with stone on the 9th, 10th, 14th, 15th, 16th, 17th and 18th fair-

SPRING SALE



SOLENT TREES OF EXBURY

Solent Trees, formerly Exbury Trees, is one of the country's leading suppliers of semi mature trees. We have over 25 years experience and were the pioneers of mature tree transplanting.

At our 70 acre nursery in Hampshire, we have over 35,000 trees available for transplanting this season, ranging from heavy standards through to semi mature trees. Semi mature trees can instantly transform the landscape and add features and character to a newly established golf course. Golf courses that have recently been constructed on predominantly flat land can be considerably enhanced by the strategic planting of semi mature trees.

Give us a call today to discuss your requirements and you will be surprised at the low cost of purchasing semi mature trees for your golf course.

SOLENT TREES

Otterwood, Exbury Road, Beaulieu, Hampshire SO42 7YS
Tel: (0590) 612278/612524 Fax: (0590) 612284

ways. It was certainly money well spent."

Worms have never been a problem on the original course but Malcolm will be spraying greens, tees and fairways on the new nine in May using Castaway Plus through a Hardi sprayer.

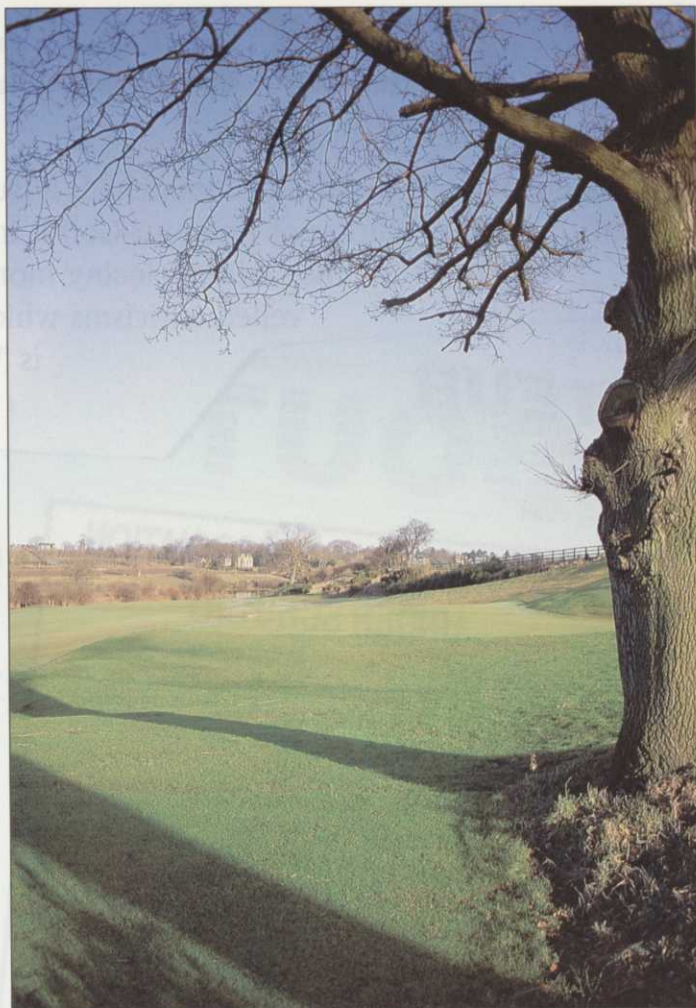
Moles have also made their unwelcome presence felt on the new course but a few poisoned worms dropped into their underground runs should take care of them – but don't tell the lady members.

It looks like being a busy time for Malcolm, who after playing less than half a dozen rounds over the last three years, is keen to re-start his playing career – as an amateur. He has applied to to be released from the PGA and expects his amateur status to be confirmed in July.

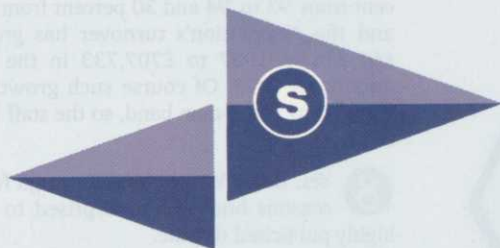
"I am quite looking forward to playing with a handicap – about eight or nine will do nicely," said Malcolm with a gleam in his eye.

Equipment at Malton and Norton Golf Club

- 1 x Ford Compact tractor 1910 4WD
- 2 x Massey Ferguson tractors, one with power loader
- 1 x Massey Ferguson Compact 1010
- 2 x Jacobsen Greensking with turf groomers
- 1 x Ransomes 171 Greensystem
- 1 x Ransomes 180
- 2 x Allen Nationals
- 1 x Jacobsen motor bunker rake
- 1 x Lloyds gang mowers for fairways
- 1 x Ransomes gang mowers for semi rough



NEW for 1994



STANDARD GOLF

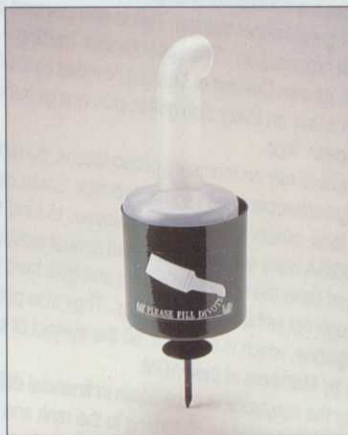
WE SET THE STANDARD FOR GOLF

Ask for our full colour 1994 Catalogue and Price List together with our comprehensive list of Driving Range Equipment.

Contact Paula or Lisa at:
Standard Golf (UK) Limited,
The Maxwell Hart Building,
612 Reading Road, Winnersh,
Wokingham, Berkshire
RG11 5HF.
Tel: 0734 788044.
Fax: 0734 785805

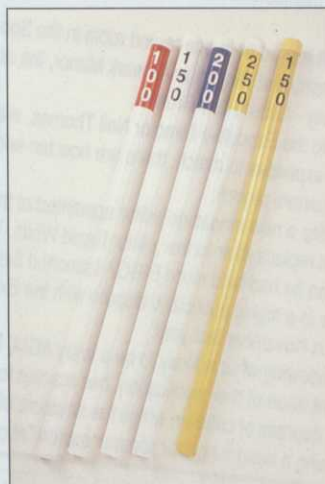


The Yankee Roller Squeegee is gold anodized aluminium with stainless steel shafts running in bronze "oilite" bearings. Quickly removes water from any surface. Handle is 50" (1.3m) long **36" (91cm) head width with Standard Roller for Putting Greens.**
Weight: 6.5lbs (3kg)
£112.82 each



Our new Seed & Soil Caddy can be filled in a jiffy, thanks to the 5" screw-on cap at the bottom. The integral handle/spout protects the contents from rain and the large capacity reservoir holds enough mixture to repair lots of divots. The container holder can be moved as quickly and easily as a tee marker.

Green or Black
£30.50 each



Highly visible yardage markers – on both sides of the fairway – help players more accurately figure distance to greens, while speeding up play. Our new PVC Distance Markers are perfect for the job! These bright, colourful markers feature easy-to-read yardages of 100, 150, 200 and 250 yards. They quickly slide out of their permanent ground anchors for mowing an other maintenance.
£452.00 set (46 white markers, decals, caps and sockets)
Driving Tool: £41.00
Individual Markers: £7.94
PVC Ground Anchors: £2.85

EGU attacks BIGGA

The English Golf Union has launched a surprising attack on your organisation. In the January/February edition of Amateur Golf it implies that it has grown too quickly and that the magazine is losing money. It is wrong on both counts. There are other veiled criticisms which we have answered below, but the big question is 'Why have they done it?'

FEBRUARY 1994 - 35

AMATEUR GOLF ABOUT

January/February 1994

GREENKEEPER'S ASSOCIATION UNDER SCRUTINY

British Greenkeepers, long regarded for their agronomic skills, have not until recent years acquired a reputation for enhancing their image, a pathway begun when the R & A funded and unified their three independent Associations in 1987 with clear objectives aimed at improving greenkeeper education.

The American Golf Course Superintendents had taken this path some 60 years previously, the fact that in greenkeepers here had a great deal of catching up to do was never in dispute, it was a question of how it could be done and how quickly. It is the latter part of the equation that would appear to be the cause of present problems.

To expand too quickly has been the down fall of many organisations. In the case of the British and International Golf Greenkeepers Association, the annual funding from the R & A believed to be in excess of £25,000 has run its full term as have grants from the Home Unions.

There has also been a substantial change in one of BIGGA's prime functions, that of greenkeeper training. This is now covered by an entirely separate organisation - The Greenkeeper Training Committee, with its own Director of Training, funded by the Home Unions through a levy on every club golfer, plus grants from the R & A and PGA European Tour.

BIGGA now have to rely on members subscriptions, currently around £52 for head greenkeepers and £45 for deputies. Some clubs pay these annual fees, others expect their employees to fund their own.

In addition BIGGA have set up a successful annual exhibition at Harrogate, and have the support of grants and gifts from the turf grass industry, though not without certain strings. They also publish a monthly magazine, which is certain to be the subject of some close questioning by Members at their AGM.

The fact that the magazine is once again in financial difficulty is not in dispute, what could be disturbing to the rank and file greenkeeper members is the expected Association reported loss of £29,000.

Since BIGGA moved from one rented room in the Sports Turf Research Institute at Bingley to Aldwark Manor, the administration has like Topsy - Grow'd and Grow'd.

In addition to the Executive Director Neil Thomas, with an executive salary and expenses to match, there are now ten additional staff on the headquarters payroll.

This includes a new magazine editor appointed at the beginning of January to replace their former editor David White. White resigned the position he had held since BIGGA launched their own in-house magazine in a highly publicized dispute with the Executive Director in November last year.

Fore-shadowing what is likely to be a lively AGM, Neil Thomas writing in current issue of their publication, has reacted to what he admits are varying degrees of criticism within the structure of the Association by expressing a need for better communication "at grass roots level".

1 What problems? BIGGA's showcase, the BTME, gets better and better each year, the magazine is a market leader and membership keeps growing.

2 There have been no direct grants from the Home Unions to BIGGA.

3 The GTC is not entirely separate as there is a great deal of collaboration between BIGGA's education unit and the GTC, as was seen with the new career video premiered at the BTME. BIGGA's in-house training programme continues to develop.

4 Not just successful, hugely successful (see this month's letters page).

5 Amateur Golf, what do you mean? No doubt the companies within the industry who support BIGGA would welcome an explanation of these 'strings'.

6 Well, we dispute it. Figures presented to members at the AGM showed that the magazine made a substantial profit and made a significant contribution to the growth of the Association.

7 Yes, it has *grow'd* and *grow'd*. Membership has *grow'd* 404 percent from 1278 in '87 to 5,162 in October '93, BTME has *grow'd* by 74 percent from '93 to '94 and 30 percent from '92 to '93, and the Association's turnover has *grow'd* from £61,258 in 1987 to £707,733 in the first nine months of 1993. Of course such growth can't be handled by a one-man band, so the staff has *grow'd* to 11.

8 Yes, David White chose to resign for his own reasons but we are surprised to hear of a highly publicised dispute.

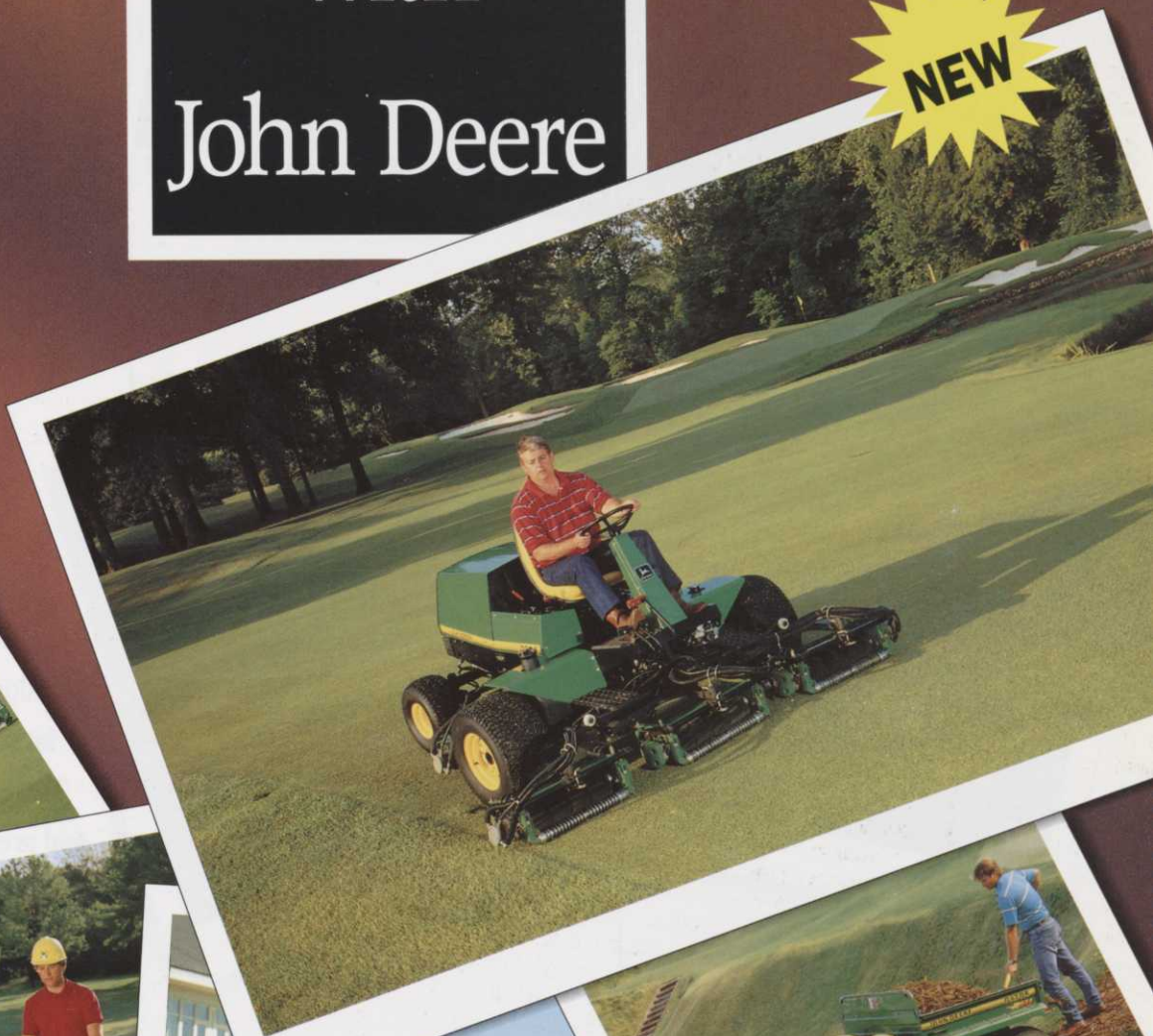
9 The AGM was exceptionally well attended, highly constructive and ended with a whole-hearted endorsement of current direction and plans for the future.

Neil Thomas, BIGGA's executive director, commented:

"I find it extremely disturbing that 'Amateur Golf', the official journal of the English Golf Union, is prepared to publish so-called information on BIGGA's affairs which is untrue, lacking in fact, misleading and contains innuendo. The unwillingness to quote sources or follow basic journalistic principles of checking material must force the question as to the motivation for this article. At a time when BIGGA is seeking to work closely with Home Union representatives through the Greenkeepers Training Committee it must be a cause of deep regret that 'Amateur Golf' has printed material which can only be interpreted as designed to undermine the stability of an association whose dramatic progress over the last seven years is a credit to the partnership of members, officials and officers working for the betterment of the greenkeeping profession as well as to the support received from the R&A and companies working within the industry."

From Tee to Green with John Deere

NEW



Look At All You Can

The new 3235 Turf System Mower is the latest example of our commitment to your business. Now, you have John Deere products that can literally take you from tee to green. Read more about these products, then contact us soon for a first-hand look.



3235 Turf System Mower

Quality of cut was the top priority in designing the new 32-hp (24-kW) 3235 Turf System Mower. Your choice of John Deere standard or heavy-duty ESP cutting units deliver the ground-hugging benefits of 22-inch (56-cm) reels regardless of what turf surface you work on.

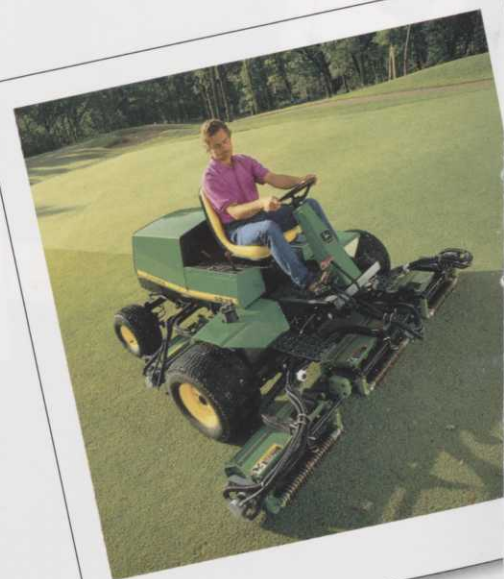
The standard cutting units are 5 inches (13 cm) in diameter and are the logical choice for slow growing grasses. The larger ESP cutting units are 7 inches (18 cm) in diameter and are the perfect choice for work in long grass and wet conditions.

2653 Professional Utility Mower

The 2653 Professional Utility Mower brings the unique combination of superior climbing ability, hydraulic reel drive, and 26-inch (66-cm) cutting units to trim mowing. Important 2653 features include a liquid-cooled 18-hp (13.4-kW) petrol engine, hydrostatic 3-wheel drive, and weight transfer system.

3365 Professional Turf Mower

The 3365 is designed for wide-area mowing where quality of cut is still a priority. John Deere designed and manufactured ESP (Extra Strength and Precision) cutting units provide exceptional performance. Their 30-inch (76-cm) width and 5-gang design combine to deliver a 3.5-metre cut on every pass.



Do With John Deere



2243 Professional Greens Mower

A new diesel option highlights the 2243 Professional Greens Mower this year. This new 3-cylinder, 18-hp (13.4-kW) liquid-cooled Yanmar diesel engine was designed to reduce emissions, reduce noise and increase fuel efficiency. Patented offset design of the 2243 cutting units means 50 percent less tracking wear around the perimeter of your greens. Long-life features include hydrostatic transaxle with enclosed hydraulics, full-length steel frame, simple service access, and O-ring hydraulic fittings.

NEW

Gator Utility Vehicles

Here are two utility vehicles for both on-turf and off-road work. The Gator 6x4 with six wheels and 4-wheel drive has an 18-hp (13.4-kW) liquid-cooled engine for quiet operation and long life. The 4x2 has four wheels, 2-wheel drive, and features a high-torque, 10-hp (7.5-kW) air-cooled engine. Total payload capacities, including 200-lb. (90-kg) operator and passenger are 900 lbs. (408 kg) for the 4x2 and 1,200 lbs. (544 kg) for the 6x4.



1200 Bunker and Field Rake

The 1200's combination of a 10-hp (7.5-kW) high-torque engine and 164-to-1 gear reduction allows it to do as much or more work than expensive hydrostatic alternatives. With its exceptional traction and pulling power, the John Deere 1200 efficiently handles varying conditions and applications. A full range of implements include ground-hugging, 3-section rake with hydraulic lift option, cultivator and front blade. Also ideal for sports fields maintenance.



Count On Us For World-Class Parts Support As Well

Our Mission

The goal of the Worldwide Parts Division is to make your John Deere dealer your first choice for equipment and parts. We're reaching that goal by continually improving parts service, distribution, and marketing as well as delivering the availability, convenience and competitive prices you expect.

Our Locations

Parts distribution centres are located in Milan, Illinois, in the U.S.A., and in Bruchsal, Germany. The Milan centre alone has 41 acres (16.6 ha), or enough

to enclose 38 American football fields. Regional depots are located in 14 cities in North and South America, Europe, Africa, Australia and for the UK and Ireland Nottingham England.

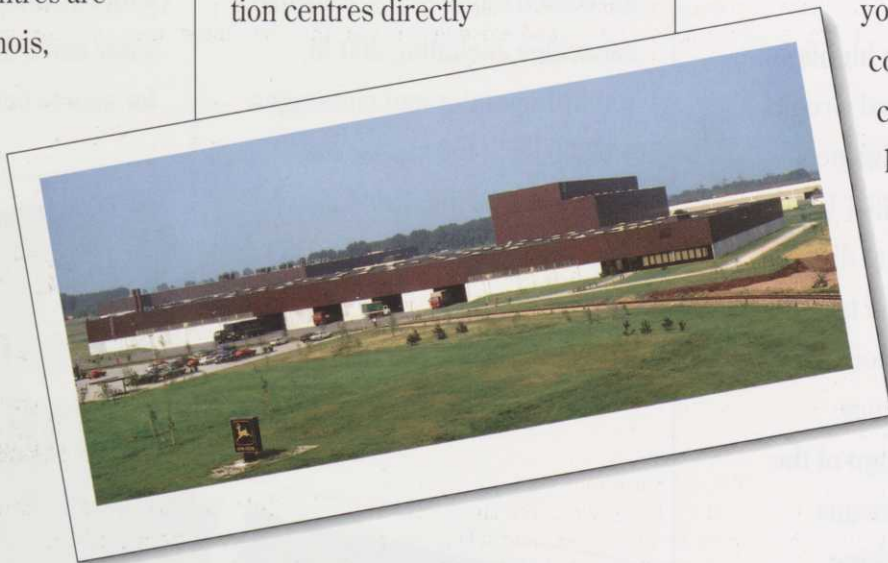
Our Products

More than 285,000 individual part numbers are sourced and stored in our Distribution Centres and depots. Each day, more than 80,000 individual parts are shipped by the two distribution centres directly

to dealers via our computerized Distribution Service Network (DNS). Our next-day fill rate from the centres is 99.5 percent. We're proud of that.

Our Customers

Our immediate customers are the, more than 5,100, John Deere dealers and distributors worldwide. Our ultimate customer is you – the person who depends on our equipment to make a living. Whether you're a farmer, contractor, or golf course green-keeper. We are here to help you succeed.



To receive free brochures on the products you are interested in, please send this coupon to your John Deere dealer or to

JOHN DEERE LTD. Langar, Nottingham
NG13 9HT Phone: (0949) 863299.

Please send me more detailed information

_____ (Model)

Demonstration

Free Golf Video

Finance Programme

Other _____

Name _____ (Block caps please)

Address _____

City and Postcode _____

Phone _____ Fax _____



**NOTHING RUNS
LIKE A DEERE**