

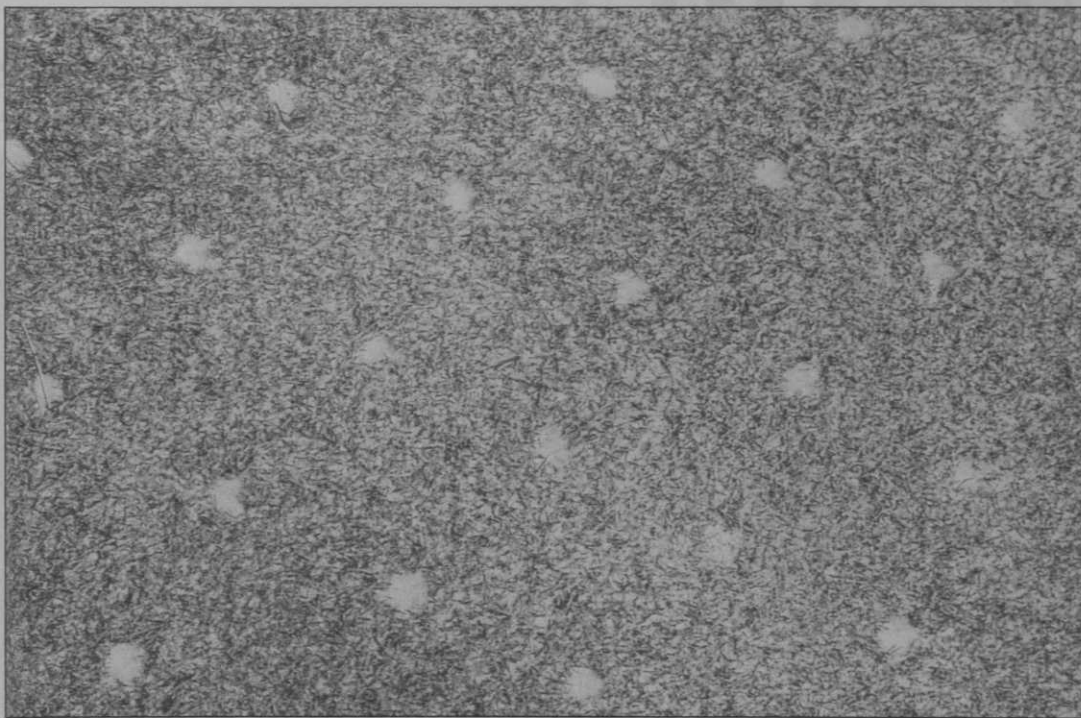
'In seeing this technique in action, it was remarkable how little the turf was damaged'

→ circular motion) tends to mash down and close the aerifier holes you are trying to fill!

Please note that this turf tip involves significant handwork, and this may be a limiting factor for some golf course maintenance operations.

As with any golf course maintenance technique, what might work well at one course may not work so well at another. There are no panaceas in our industry. However, in situations where you want to fill aerifier holes completely and reduce the scuffing and abrasion of the grass so common with mechanical drag mat use, give this technique a try. It works well for Paul Latshaw, Sr., at Wilmington Country Club, and it could work for you.

■ This article first appeared in the USGA Green Section Record and is reproduced here with due acknowledgement and thanks to the USGA Green Section and author Stanley Zontek.



The final results - holes filled to the surface



"The Tops in Top Dressing"

The finest quality

◆ Top Dressings ◆ Root Zones ◆ Tees Mixtures

Delivered nationwide

Martin Brothers (UK) Ltd

Tel: (0625) 584571 • Fax: (0625) 586130

See us at Haydock Park
28th/29th September

AD
REF
12

Update



GETTING BIGGA AND BIGGA

WITH five months to go before BTME '94 takes place in Harrogate next January, a massive 77 per cent of available stand space in Halls A, B and C has already been taken up by exhibiting companies.

Interestingly, Ford New Holland, who chose not to attend in 1993, have confirmed they'll be back in 1994. However, the site they occupied in Hall A for the first four exhibitions has been snapped up by someone else, so look out for Ford New Holland this time in Hall C.

Don't be left out in the cold next January. Contact Louise Lunn on 0347 838581 for more information if you are interested in exhibiting – but don't leave it too long!

This is **YOUR** chance to be a **BIGGA** winner!

SIX QUESTIONS TO WIN £600 WORTH OF PRIZES

You could WIN your way to BTME '94, the star-spangled Exhibition and Education Seminar programme that's Number One in the industry!

Each month from June we've been posing questions about the upcoming BTME. Now it's time to tackle a final question and send in all your answers. To help you along, we've repeated the questions and remember all the answers can be found in past issues of Greenkeeper International.

There are THREE BIG PRIZES to be won!

First prize: Return rail travel, three nights' accommodation at a top hotel and entry into all the education seminar sessions. *Value: £300.*

Second prize: Return rail travel, two nights' accommodation and entry to all seminar sessions. *Value: £200.*

Third prize: A single night's accommodation and entry to all seminar sessions. *Value: £100.*

★ All you have to do to stand a chance of winning, is to write down your answers, numbered 1 to 6, on a postcard, add your name and address, stick on a stamp and post to: BTME Competition, BIGGA, Aldwark Manor, Aldwark, Alne, York YO6 2NF to be received by Friday October 15th. The first correct entry drawn after the closing date will win first prize, the second will win second prize and the third – you've got it – will collect the third prize. *Good luck!*

THE SIX BIG QUESTIONS:

- 1 In April's BTME Update we carried a letter of congratulation from a Sales Director of one of the industry's leading companies. What is his name?
 - 2 In the BTME column in May we introduced our new sales and marketing assistant with special responsibility for the BTME. What is her name?
 - 3 How many promotional information packs had already been sent to interested companies? (June issue)
 - 4 Who is John Deere's Groundcare Division Manager? (July issue)
 - 5 Who is the Managing Director of Multicore Aerators? (August issue)
- And the final question, from this month's column:
6 What percentage of exhibition stand space is already taken up?

Note: competition not open to BIGGA staff. No cash alternatives. Judges' decision is final and no correspondence will be entered into.

VERTIDRAIN HIRE

CALL THE EXPERTS

Call Lisa Pierson
NOW for immediate
and autumn vertidrain
treatments



GOLF FAIRWAYS

GOLF TEES

GOLF GREENS

RUGBY PITCHES

BOWLING GREENS

HOCKEY PITCHES

CRICKET SQUARES

CROQUET LAWNS

FOOTBALL PITCHES



Brian D. Pierson (Contractors) Limited

GOLF COURSE AND LANDSCAPE SPECIALIST

HOMESTEAD FARM, RINGWOOD ROAD, THREE LEGGED CROSS,
WIMBOURNE, DORSET. BH21 6QY

Tel: Verwood (0202) 822372, 824906 & 825979 Fax: (0202) 826447

AD REF 40 Member British Association of Golf Course Constructors
Member Golf Course Builders of America



HAYTER

THE COURSE LEADER

T93



BEDS
Bedfordia
Groundcare Ltd
0234 826262

BUCKS
Risboro Turf Ltd
0844 274127

CORNWALL
Hennings
Horticultural Ltd
0326 250020

COUNTY CORK
John O'Flynn
and Son Ltd
010 353 21314088

DEVON
Devon Garden
Machinery
0803 872124

DUBLIN
Dublin Grass
Machinery
010 353 1 386995

DUNDEE
Powershift
0382 24152

DYFED
Pro Turf
Equipment Ltd
0267 233648

EAST SUSSEX
John Shaw
(MACH) Ltd
0825 872070

ESSEX
Cowies Eastern
Tractors Ltd
0245 256281

Grasshopper
Horticultural Ltd
0245 362377

GALWAY
JW Tool Services Ltd
010 353 91 56321

GLASGOW
Nairn Brown
(Glasgow) Ltd
041 644 3563

GRAMPIAN
Allan Gammie
0561 377355

GWENT
Ted Hopkins
0633 680754

GWYNEDD
Major R Owen Ltd
0766 770261

HANTS
New Forest Farm
Machinery Ltd
0425 472572

Golf & Turf
Equipment
0734 326484

HERTS
Golf & Turf
Equipment
0438 820879

J Middleton Ltd
0462 892528

ISLE OF MAN
Isle of Man
Farmers Ltd
0624 626600

KENT
Drake and
Fletcher Ltd
0233 625044

LANCS
Gibsons Garden
Machinery Ltd
0772 682516

**NORTHERN
IRELAND**
Cyril Johnston
& Co Ltd
0232 813121

NORFOLK
Ben Burgess Garden
Equipment Ltd
0603 628251

NORTHANTS
Woodlands
Brigstock Ltd
0536 373238

NOTTINGHAM
Mitchell Farm
Industries Ltd
0785 787987

ORKNEY
John Scarth
(Eng) Ltd
0856 2601

SHROPSHIRE
Motrac Ltd
074 381528

SOMERSET
Rochford Garden
Machinery Ltd
0963 33713

STAFFS
Mitchell Farm
Industries Ltd
0785 42341

SUFFOLK
Tomlinson
Groundcare
0449 736060

SUSSEX
John Shaw
(MACH) Ltd
0825 872070

TYNE & WEAR
Fewster Agric
Services Limited
091 236 4155

WARKS
WFI Grasscare
0789 204073

WIGAN
F R Sharrrock Ltd
0257 422710

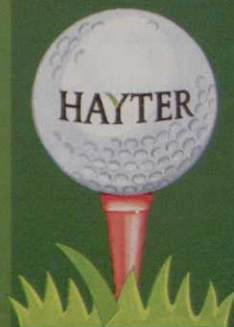
WILTS
G J Handy & Co Ltd
0793 721615

WORCESTER
Ron Smith & Co Ltd
0905 23887

YORKSHIRE
H C Professional
Grass
M/C Ltd
0924 201875

THE PROFESSIONALS' NUMBER ONE CHOICE

The masterful T93 gives superb cut with complete reliability and ease of operation. Three supreme quality cylinder heads with simple, precision height of cut adjustment, mow down to $\frac{3}{32}$ " (2.4mm) across a width of $61\frac{1}{2}$ " (156cm).



The T93 with its 16 hp Kubota diesel is fully hydrostatic. Many parts are interchangeable and servicing and daily maintenance are simple. Features such as the adjustable seat and steering column ensure operator comfort.

Hayters PLC, Spellbrook, Bishop's Stortford, Herts CM23 4BU Telephone: (0279) 600919 Facsimile: (0279) 600338

Trade Topics



Huxleys have introduced a new version of the increasingly popular 358 Greensmower. Changes to the hydrostatic pump, reel drive pump and wheel motors have enabled the maximum engine speed to be reduced to 2100 rpm. This provides extremely quiet operation, reduced fuel consumption, less wear on engine and transmission and a smoother, cooler and more simple operation.

The new 358 also has "quick adjust" Turf Combs, which avoid the need for spanners when setting combs in and out of work, and a faster reel speed which gives improved grass collection. New optional accessories include headlamp, towbar and flag holder. The new Huxley 358 Greensmower is in production now. Details/demo, Tel: 0962 733222.

The names of T Parker Ltd and Maxwell Hart have been known for over 50 years, and as individual companies they were proud of their service and advancements. In March this expertise was merged to become Parker Hart Ltd - a union conceived to further promote innovation and experience to their joint customer base and to give one company the ability to concentrate on the turfcare aspect of the business.

D S Holdings is the name of the holding company now continuing the other aspects already established under Maxwell Hart: Standard Golf (UK) Ltd, sole distributors for Standard Golf of America, Envirogreen, the first national company to specialise in the disposal of empty containers and the safe destruction of full or banned chemical containers, and Concept Surfacing, who have recently added new artificial golf surfaces to their range.

Greenkeeper International is pleased to inform readers that they are very much alive and still located at Winnersh. Tel: 0734 788044.

The much sought after wall chart from Rhone Poulenc Environmental Products has been re-designed. The new chart features information on weeds, pests and diseases, plus details on product choice, application timing and protective clothing. Tel: 0277 301115.

In July H Pattison and Co Ltd came under new ownership, Mr J F Hinch is now chairman and Mr M C Hinch has taken over from Mr A Hemingway as managing director. In a recent press release, the company declared that it

remains a family concern and assures its suppliers that there will be no changes within the organisation. Tel: 0582 597262.

Eric Hunter Grinders seem to be installing a fair number of their grinding machines into golf course workshops these days. The latest include Mold GC, Caldyc GC, Newbury & Crookham GC, the famous Malone GC in Northern Ireland, the Pine Ridge Centre, and Wimbledon GC. Many course managers are becoming aware of the advantages of 'in-house' mower maintenance, and the technique of 'relief' grinding taught by Hunter's is fast gaining recognition. The method reduces friction against the bedknife - with amazing results: bedknives last 2-3 times longer, fuel is saved by minimal drag, adjustments are needed less frequently and the cleaner cutting action enables mowing to take place in very wet conditions without tear or skid. Details: Tel 0207 70316.

The greenkeeper has access to some well established and effective selective herbicides. These, in conjunction with regular mowing, can provide control of many unsightly and damaging weeds in established turf. Nonetheless, many weeds can survive and thrive even under close mowing regimes, generally those which have a creeping, prostrate growth habit and are missed by the mower, e.g. slender speedwell, which has proved most difficult to control by existing selective herbicides.

Responding to the challenge of developing a new herbicide for the control of such difficult to control turf weeds, Rigby Taylor and DowElanco evaluated more than 20 candidate herbicides. The result is Bastion T, a highly effective novel herbicide. Based on two powerful modern herbicides, combined in an ingenious micro-emulsion formulation, Bastion T delivers control of not only a wide range of important, broad-leaved weeds, but also on the tough, low-growing weeds whose control has previously proved so difficult. It promises to become the standard treatment for effective control of weeds such as slender speedwell and yellow suckling clover.

Despite its powerful effect on weeds, Bastion T is safe to desirable turf grasses. Unlike most other selectives it can be applied to young turf as little as two months after sowing, providing much-needed protection in the critical stage of turf development.

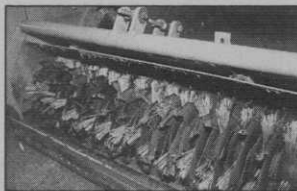
Trials have confirmed the remarkable length of weed control of Bastion T, in many cases up to six months, and it does not cause unsightly scorch of the weeds, which may only temporarily arrest growth. Rather, activity depends on a sure, thorough kill of problem weeds, eliminating the potential for regrowth.

Approved for use through knapsack sprayers as well as conventional hydraulic equipment, Bastion T is a highly versatile product, tailored to meet the requirements of today's turfgrass manager.

Hardi, the market leader in amenity spraying equipment, has developed a sprayer for the Toro Workman 3000 utility vehicle. The sprayer is from the Hardi PS range and has a choice of 300 to 800 litre capacity tank sizes and boom widths of either 6 or 8 metres. The design includes the unique Hardi 3-point quick attach/de-mount system. Prices are from £1,990. Details: Tel 0455 233811.

Complete Weed Control, the UK's largest specialist spray contracting service, has introduced a new corporate folder and series of leaflets covering almost every aspect of weed control.

Containing seven inserts, the folder looks at the following areas: reasons for complete weed control, shrubberies, amenity areas, industrial areas, footpaths and pavements, aquatics and forestry. The pack is free, Tel: 0608 644044.



Leading tractor supplier, Kubota (UK) Ltd, has launched a new range of comfortable, practical

clothing for wear in the field. Available for Kubota's frontline staff, dealers and customers, the new collection, which is designed in classic navy and airforce blue, comprises a jog suit, a cotton polo shirt, a warm polar fleece and wool mix sweater, together with a waterproof, breathable jacket.

The new Fibagroom from SISIS is a combined scarifier and sweeper which incorporates all the best features of the SISIS Veemo and SISIS Litamisa, with several new design features particularly for undulating ground. The scarifying blades are interspersed with brushes so that the fibre removed is simultaneously collected into the 2.3 m³ capacity high lift hopper. Organic matter such as leaves and twigs are part-mulched before collection.

The reel comprises two independently floating heads to follow ground contours and gives a 183 cm working width. The scarifying depth is quick and simple to adjust, with a single hand control on each head. Details, Tel: 0625 503030.

Scheduled for opening last month, the Oxfordshire Golf Club have taken delivery of no less than 21 Toro's from local Toro dealers, County Motors.

Machinery supplied include ten Pedestrian Greensmowers GR 1000's, two 3000-D Triple Greensmowers, two Reelmaster 5100 Fairway Mowers, two 216-D's for semi-rough, two 325-D's with Re-cycler decks for out of play areas, two Sand Pro 5000's; and one Multi Pro self propelled sprayer used in particular for liquid fertiliser.

POWERFUL



All SISIS machines
are designed,
patented and
manufactured in
Great Britain.

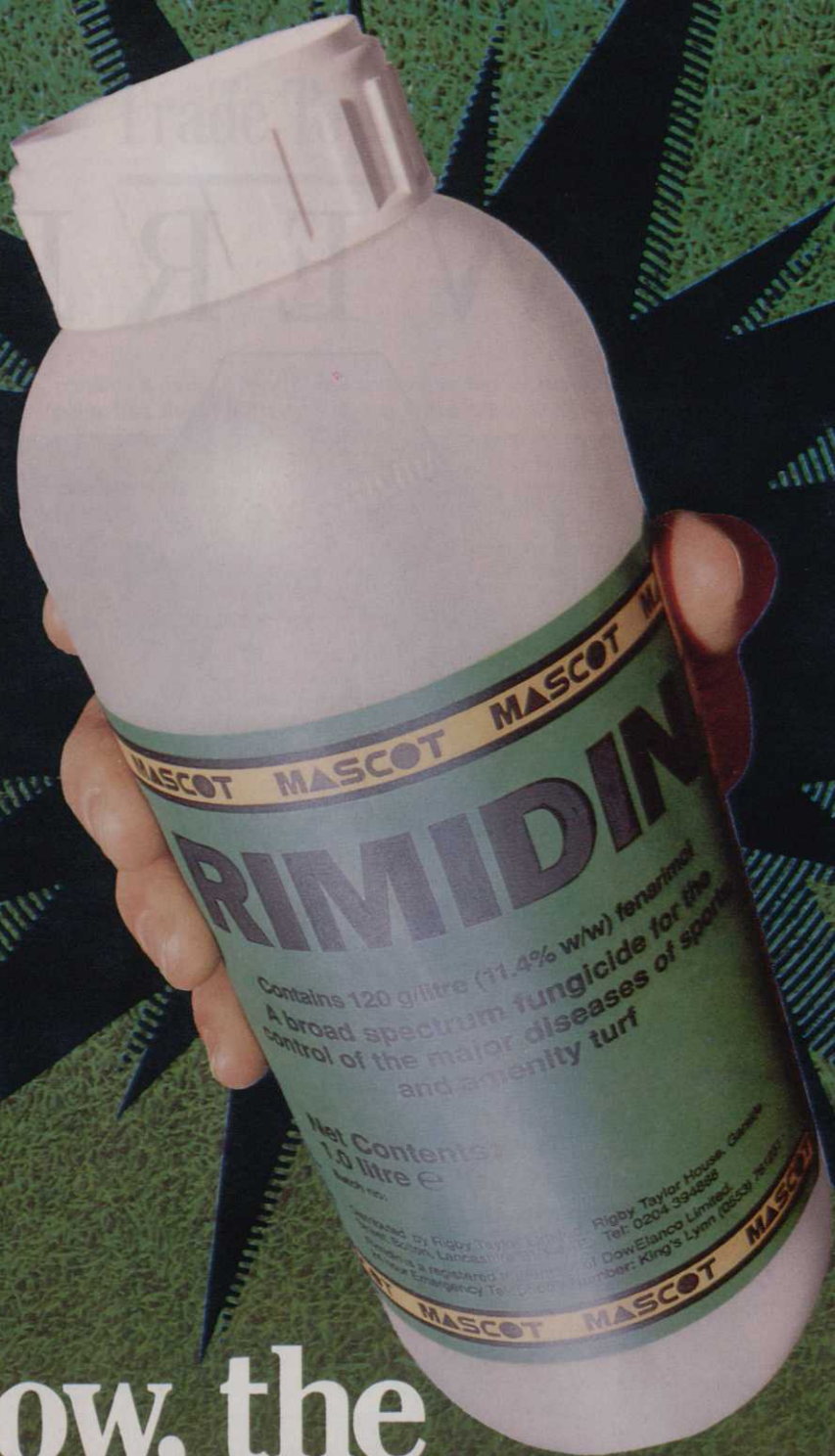
12 Month Warranty,
Choice of Finance
Arrangements,
National Spares and
Service Network.

PERFORMERS

SISIS Equipment (Macclesfield) Ltd., Hurdsfield, Macclesfield, Cheshire SK10 2LZ Tel: (0625) 503030 Fax: 427426

SISIS Centre in Scotland, The Roundel, Middlefield Ind. Estate, Falkirk FK2 9HG Tel: (0324) 29635 Fax: 32894
SISIS INC 4827 Phillips Highway, Jacksonville FLORIDA 32207, USA

AD
REF
176



Now, the Fusarium Control you've been waiting for!

New Rimidin is the latest addition to the Mascot Range of products from Rigby Taylor.

Rimidin is today's revolutionary answer to long term control of Fusarium, Dollar Spot and Red Thread. Technologically advanced Rimidin provides unrivalled performance.

Rimidin's performance has been confirmed in STRI Trials and offers unrivalled efficacy. Because of its systemic action Rimidin keeps on working after rainfall or mowing giving superb value for money.

Don't wait any longer for the Fusarium control you need. Talk to Rigby Taylor now for full information.

**Rigby
Taylor** 

A GROWING FORCE IN LEISURE

 **FREE 0800 424 919**

CLUB THAT JACK BUILT

PAUL COPSEY examines one of the largest
golf developments in Europe – the Jack
Nicklaus designed London Golf Club



THE DEEP DRILL SERVICE FOR SPORTS TURF

Why suffer turf problems associated with compacted soil?

Our Deep Drill machine will create a pattern of sixty 3/8" holes, up to 10" deep, on a 5" spacing, in one movement, leaving an unmarred surface.

RESULTS IN ● Relief of compaction ● Improved aeration and percolation of water to the root zone ● Deeper, wider and more vigorous root development ● Holes offer a way of introducing fresh media to the soil ● Healing time of three to four days ● Drills through dry patch.

BENEFITS WITHOUT SIDE EFFECTS FOR
GOLF FAIRWAYS, GOLF TEES, GOLF GREENS, RUGBY PITCHES,
BOWLING GREENS, HOCKEY PITCHES, CRICKET SQUARES,
CROQUET LAWNS, AND FOOTBALL PITCHES



SOILCARE

C & P SOILCARE LIMITED, Unit 3, Bush Farm, Nedging, Ipswich,
Suffolk, IP7 7BL. Telephone/Fax: 0449 741012
Mobile telephone: 0860 493521

AD
REF
46

THE ANSWER TO YOUR SUMMER AERATION PROBLEMS



The RTS "Sarel Type" Roller
A pedestrian model is also available

THE ANSWER TO YOUR GOLF BALL COLLECTING PROBLEMS



The Acrow Ballpicker
A pedestrian model is also available



RISBORO' TURF

CHINNOR ROAD, BLEDLow, PRINCES RISBOROUGH
AYLESBURY, BUCKS. HP17 9PH
TEL: PRINCES RISBOROUGH (0844) 274127 FAX: (0844) 274191

Contact us for the name of your nearest dealer or a demo

AD
REF
386

Earlier this year members of the Kent section of BIGGA visited the London Golf Club, a new 36 hole development situated on the Kentish North Downs close to the Brands Hatch motor racing circuit, perhaps best publicised as the latest course 'that Jack built'. Yes indeed, Golden Bear Inc. heads the architectural team responsible for both courses and Jack Nicklaus personally has designed one of the 7,000 yard courses, the par 72 Heritage championship layout. Rumours, of course, have abounded regarding the total cost of the finished project: could it really be £40 million, was this going to be another luxury, Japanese funded, American bent grass experiment and, inevitably, questions were raised regarding the merits of this type of project and construction in the UK?

This visit seemed an incredible chance to see for ourselves one of the largest golf developments in Europe, so with the help and enthusiasm of the course manager, Joe Paulin, a visit to look at aspects of the site was arranged. To over-simplify the itinerary, Joe greeted us with a brief talk on the details of the site, its construction and technical specifications, whilst irrigation and science supremo, Colin Sainsbury, talked about and demonstrated aspects



of the million pound irrigation system and showed us the newly delivered laboratory equipment for on-site leaf analysis. Dennis Exell, the club's chief mechanic, showed us the extensive machinery storage and maintenance facilities, followed by Steve Marsden, LGC's assistant course manager, taking us on a guided tour of the site, showing us stages of

both on-going and finished construction.

Many of this country's 'experts' may have already prejudged other, similar, constructions of this type and have appeared all too eager to knock and scoff, but the open-minded purpose of the visit was to see which aspects, if any, were relevant to our present or future British greenkeeping practices. The LGC is on a huge

ROLLER MOWER BEATS THE GANG



THE MAJOR GROUNDSMAN 6000 ROLLER MOWER

- Totally enclosed for safety
- Cutting heights from 1/2"-4"
- Ideal for parks, amenity areas, golf courses, playing pitches and sports grounds
- 3" blade overlap
- Fully gear driven through shock absorbing couplings
- Full width rollers front & rear
- Eliminates wind-rowing

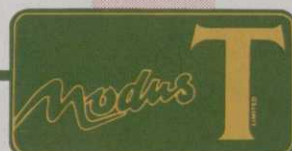


MAJOR EQUIPMENT LTD.,

Units 8/9 Calder Trading Estate, Leeds Rd, Bradley, Huddersfield, HD5 0RX
Tel: (0484) 450411, Fax: (0484) 450412

AD
REF
419

Titan
DEEP AERATOR



Leaders in Ground Care Technology



- * 6-12 foot working widths
- * Hydraulic weight transfer or ballast with weight tray and floating top link
- * 6 or 12 inch slitter spacing
- * 8 or 10 inch blade depths
- * Optional pressure roller

THE BREWERY PARK INDUSTRIAL ESTATE, NEW STREET, WEM
SHROPSHIRE SY13 2RB TEL.: 0939 233213 FAX: 0939 233682

AD
REF
62



'The greens at LGC, despite being very large, were all hand mown and at our own courses this would be an ideal daily objective. But...'

— Paul Copsey

site and in every way is a very big project, comprising some 560 acres, 11 lakes, USGA Spec. greens and tees, creeping bent and more traditional seed mixtures, high staffing levels, and the very latest in machinery.

We were, perhaps, somewhat overwhelmed by the sheer scale of the operation, but I am sure in our minds we began to draw comparisons with our own courses, especially bearing in mind Joe's opening address: 'the attitude and objectives of my team – to deliver a top class golfing facility for their client – with the assembled machinery and equipment being the tools to aid in achieving that task.' Well for the 'traditionalist', like it or not, this is perhaps what we should all be aiming for on our own courses, though what seems lacking in our own cases, more often than not, is that 'our' clients – the golf clubs – seem unable to grasp this simple but essential fact.

As an example, various members of our group commented that the greens at LGC, despite being very large, were all being hand mown, and that at their own courses this would be an ideal daily objective. The fact is that we could all do this, given the equipment and (more importantly) the extra staff with which to carry out the task. To extend this

approach to all other areas is obvious. Many of us admire the use of lightweight fairway mowers to regularly mow and stripe fairways, but in general, one pass a week with a trusty (and often rusty) set of gangs has to suffice. In simple terms, many of us are being forced to make cost compromises on the condition of our courses in just about every aspect of maintenance. What we need is for this fact to be fully understood by our club members, especially when they complain of poor course conditions compared to the 'bigger' course they played 'up the road'. It's the same in all walks of life –

you can have anything, as long as you can pay for it!

Staying with the subject of machinery, at the LGC this is cared for meticulously and maintained to perform at its optimum, always ready for use at the crack of dawn each day. With all equipment now being so expensive, shouldn't more clubs be taking this attitude toward extending the life and maintaining the performance of their machines, perhaps by hiring an on-site mechanic, or by improving workshop facilities?

Now some of you are probably still asking the question, 'why do you need on-site lab equipment and why analyse grass cuttings?'. Well, one of the key points that strikes the visitor at LGC is the coupling of site maintenance practicalities with those of science. Joe was at pains to point out that greenkeeping basics never change, no matter how big or small the project, that bigger projects often have bigger and more complex problems, and that greenkeeping will always be an art or skill. Linking these, however, he pointed out the ever-increasing need to understand the science of greenkeeping. The science, he believes, has to be used as a yard stick, as another tool.

I need not elaborate further, for the argu-




BILLY GOAT TRUCK LOADER

Let's two men do the work of ten all the year round. Collects litter, leaves and all light debris. The perfect partner to a blower. Free demonstrations nationwide. G19

BOB ANDREWS LTD
 1 BILTON IND. ESTATE,
 BRACKNELL BERKS
 RG12 8YT
 TEL: (0344) 862111

AD
REF
381



ARIENA GUR

A simple, non toxic and ready to use line marking system complete with stencil for marking out G.U.R. areas.

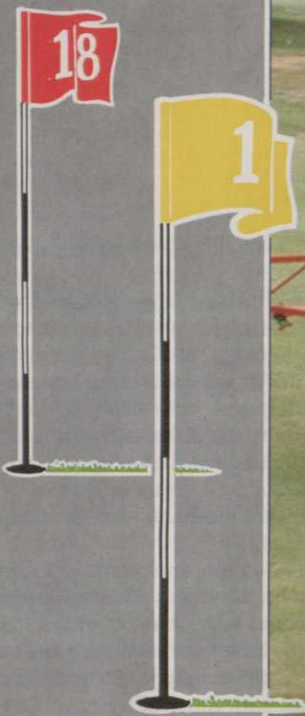
When it comes to G.U.R. marking...

turn to the experts

Supaturf

SUPATURF PRODUCTS LTD
 AMENITY HOUSE · 2 MAIZERFIELD · HINCKLEY FIELDS INDUSTRIAL ESTATE
 HINCKLEY · LEICESTERSHIRE LE10 1YF FOR FURTHER DETAILS
 Tel: (0455) 234677 or Fax: (0455) 234714

AD
REF
164



- Meets current Health and Safety regulations
- Mounted/trailed/demountable units
- Choice of tank sizes 200-1500 ltr
- Choice of boom width 4m-12m with optional 3m walk boom



It's the results that count . . .

Contact the experts NOW on 0455 233811

HARDI LTD · 4/5 WATLING CLOSE · SKETCHLEY MEADOWS · HINCKLEY · LEICS LE10 3EX · TEL 0455 233811 · FAX 0455 233815

INTURF™ ILLUSTRATED

See us
on Stand
K17-18
at the loG
Show



WE ARE REGISTERED FOR BS 5750 QUALITY ASSURANCE OFFERING THE MOST EFFECTIVE AND COMPREHENSIVE TURF SUPPLY AND TURF INSTALLATION SERVICE ANYWHERE!

INTURF™

Inturf Limited, Regent Street, Pocklington, York YO4 2QN
Telephone (0759) 304101 Fax (0759) 305229

For Scotland Telephone 031 663 6617/8/9 Fax 031 663 0651



WE GROW FIVE STANDARD GRADES OF TURF PLUS ANY GRADE OF CUSTOM TURF FOR ALL SPORTS & AMENITY USE. AVAILABLE FROM NURSERIES AND DISTRIBUTORS NATIONWIDE.



WE CAN SUPPLY ONLY OR SUPPLY AND LAY STANDARD ROLLS OF TURF, THE BIG ROLLS OF TURF AND UNIQUE 'LAY AND PLAY' TURF TILES.

