

If 'Capability' Brown of landscaping fame had been designing and constructing golf courses in the 18th century instead of laying out the parks of England's stately mansions, he would certainly have been equally successful in re-shaping the golfing landscape by moving hills, digging lakes and transplanting large trees.

Today's golf course architects might be seen as the heirs to many great 18th century landscapers, where they succeed in re-shaping the new golf courses, yet retaining the essential character of the surrounding countryside.

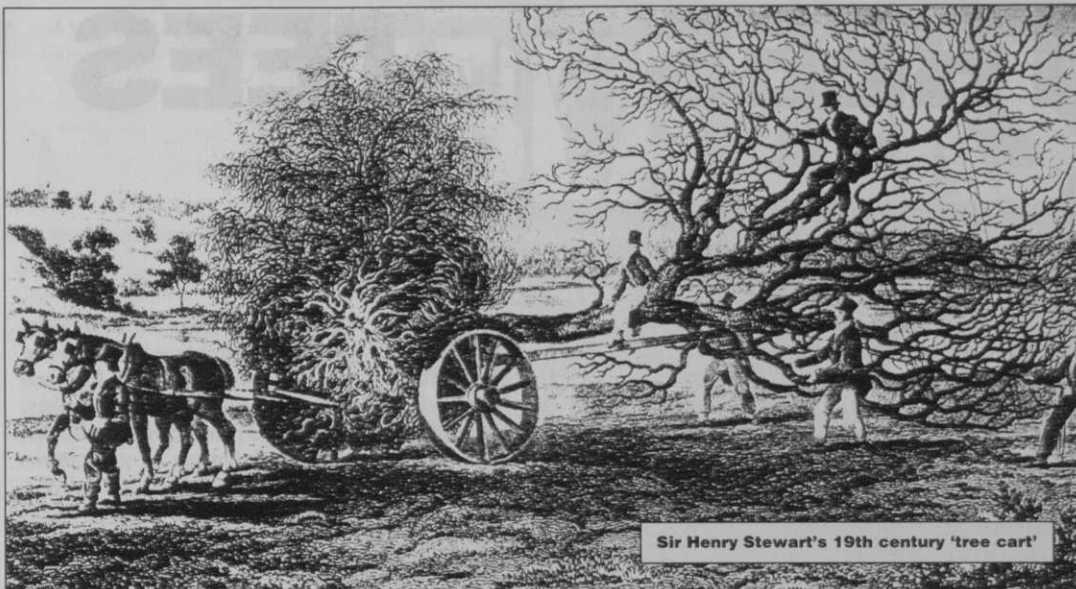
The 18th century landscapers used teams of draught horses to move large trees, but now mechanical tree-spades on flotation tyred tractors take minutes to transplant 20 year old trees, and if desired, even larger trees, up to 1.5m trunk girth and 15m height, can be transplanted using 200 ton cranes and special tackle.

The proprietors and architects of new golf courses are likely to find over-mature trees on their chosen sites, often protected by local tree preservation orders (TPO's). Old established trees, especially oak and beech, do not tolerate changes in the water table, caused usually by modified drainage and land form. The skill of the architect will determine whether these existing mature trees can be retained in the design.

Increasingly, Planning Authorities expect to be offered outline applications for new courses that include extensive tree planting, either as shelter belts to screen adjoining properties, or simply to increase tree cover overall. Planning applications that incorporate generous tree planting are more likely to succeed than those that do not. Mostly this planting is done with three year old trees (whips) spaced 1.5 to 2.0m apart, and protected from rabbits and deer. But for greater effect in important positions it may be appropriate to plant larger trees.

On a number of the most prestigious new parkland courses, the developers and architects have chosen to plant large trees extensively. This has achieved the desired landscaping result immediately, instead of waiting five to ten years for young trees to grow.

Two important new courses that open this summer have recently completed large tree



Sir Henry Stewart's 19th century 'tree cart'

TREES by the TEES

CHRIS NEWMAN examines the history
of trees on the golf course

planting schemes aimed at quite varied objectives.

Golf Fund plc, led by Colin Snape, is developing The Warwickshire, a 45 hole complex at Leek Wootton near Warwick, now due to open fully in 1993. Karl Litten has designed the two 18 hole courses and a nine hole par three course, constructed by Total Golf Ltd in a truly beautiful parkland setting of mature stands of beech and oak, flanked by the Victorian arboretum of Wootton Court.

The objectives of the new planting, using large trees in this already mature landscape, as explained by the landscape architect Graham Stevenson, are three-fold. Most of the large tree planting relates directly to the 45 tees and greens, thereby giving visual structure to the three courses.

These trees are planted in groups of the same species or maybe two complementary

species such as pine and birch. In sympathy with the species of mature parkland trees, distinct areas of new planting along the fairways are predominantly of oak, beech, chestnut, pine and willow. The adjoining arboretum is being extended on to the course with planting of many similar exotic species from North America and Asia. The overall effect of planting these five hundred large trees at The Warwickshire is to link the course with its surrounding landscape, yet at the same time give form and direction to the undulating land form.

The Oxfordshire at Thame is an eighteen hole championship course which opened in June 1993, and likely, it is said, to be extended with a second eighteen holes.

Nitto Kogyo Group, which owns and manages 36 courses worldwide, commissioned Rees Jones to design the new championship

course. Nitto Kogyo chose the rolling countryside site, endowed with mature oak and ash, which have been resourcefully incorporated into the undulating design. Four new feature lakes provide water and assist with drainage for the course. Mr Edmond de Rothschild continues his long association with Mr Hitoshi Matsuura, chairman of Nitto Kogyo Group, to achieve a truly English landscape setting for the designs of Rees Jones. The original hedgerow elms vanished in the 1920s, but they have been replaced by 400 semi-mature indigenous oak, maple, lime and ash from Exbury Gardens, transplanted mainly around the perimeter of the course. Once again, as at The Warwickshire, the tree planting achieves a continuation of the existing countryside, but in this instance it is a landscape of hedgerow trees, as it was before elm disease wrought havoc in Oxfordshire and all over England.

Replanting the hedgerow trees at The Oxfordshire has achieved other considerable benefits. Six of the eighteen fairways lie adjacent to the new hedgerow plantings, which provide shelter from the north and east wind. On the north-west a dense planting of these large trees screen the nearby A 329 Thame-Oxford road. Underplanting with indigenous shrubs and hedgerow plants produces a wild life corridor linking with the original hedgerows on neighbouring properties.

The techniques for planting at The Warwickshire and The Oxfordshire differ considerably. At The Warwickshire the red sandy loam and iron-stone inclusions can be made to drain sufficiently providing the tree positions are not in hollows or gullies. By contrast the blue Oxford clay underlying The Oxfordshire course pro- → 22

TREES by the TEES

21 → vides no natural drainage, so that every tree pit is connected by land drain to the course drainage system. On both courses the large trees were stored on site during the winter and spring of

1991/1992 while the courses were too newly formed to allow planting vehicles on to them. In the spring and early summer of 1992 the planting of The Oxfordshire went ahead on schedule.

These large trees of 8 to 10m height are supported against the wind by the Japanese method, using a tripod of long stakes, which also protects the trees from accidental damage by gang-mow-

ers and machinery. At The Warwickshire the trees are supported either by overhead wire guys or by stakes, as both courses are exposed to extremes of wind.

At The Warwickshire the planting has been spread over the summer of 1992, taking trees in full leaf out of storage on site. On the first eighteen holes the large trees were moved across newly planted grass by flotation tyred vehicles. Reinstatement was kept to an absolute minimum by working only during dry weather.

All these trees on the two courses have been planted, maintained and insured by the contractors Civic Tree Care Ltd of Tring, who also maintain the areas around the planting. Civic Trees expect to replace, free of charge, about 5% of trees, and the success rate at The Oxfordshire after a full growing season is 94%, despite transplanting most of the trees in full leaf.



The Oxfordshire. Semi-mature trees replace the hedgerow Elms lost in the 1970s and shelter part of the course from the A329 Thame-Oxford road, and the north east winds



SOLENT TREES OF EXBURY

Solent Trees, formerly Exbury Trees, is one of the country's leading suppliers of semi mature trees. We have over 25 years experience and were the pioneers of mature tree transplanting.

At our 70 acre nursery in Hampshire, we have over 35,000 trees available for transplanting this season, ranging from heavy standards through to semi mature trees. Semi mature trees can instantly transform the landscape and add features and character to a newly established golf course. Golf courses that have recently been constructed on predominantly flat land can be considerably enhanced by the strategic planting of semi mature trees.

Give us a call today to discuss your requirements and you will be surprised at the low cost of purchasing semi mature trees for your golf course.

SOLENT TREES

Otterwood, Exbury Road, Beaulieu, Hampshire SO42 7YS
Tel: (0590) 612278/612524 Fax: (0590) 612284

GOLDSMITH
TREES & LANDSCAPES LTD

Specialists in growing, supplying, planting and moving of

Top quality semi-mature & heavy trees, ornamental & native varieties.

Reliable service at competitive rates.

Expert advice on all aspects of tree care, selection and landscaping.

Extensive range of hedging.

Single plants, to the largest scheme.

Crown Nursery, High Street, Ufford, Woodbridge, Suffolk IP13 6EL
Telephone: 0394 460755 Fax: 0394 460142

On established golf courses the planting of young trees as copses, woods and shelter belts creates a 'tree bank' that in five, ten or twenty years can yield, by the normal process of thinning, substantial numbers of surplus trees to replace losses on other parts of the course. Young trees, well planted, tended and protected for the first few years, can double in value every two to three years, and may remain available in these 'tree banks' for up to twenty years, before they become too large to be transplanted economically. The cost of transplanting by tractor tree-spade can be as little as one fifth of importing an equivalent tree from a nursery.

Already many established courses have these 'tree banks' of semi-mature trees that have grown up naturally from self-seeded saplings. In order to realise the potential of these surplus, yet valuable, trees it may be

necessary to cut out the less good specimens to make space for the best to flourish and develop a full crown for several years prior to transplanting them on to the course.

Trees in the landscape are more valuable than ever before. Everyone involved in the countryside is aware that disease, storms, squirrel and deer can ravage the most cherished trees. An annual or bi-annual programme of replanting with young trees will ensure that the country's tree heritage is carried on into the next century.

● The author, Chris Newman, started designing large tree moving machines in 1960 and formed Civic Trees in 1963, a company that grows, supplies and transplants semi-mature trees throughout the British Isles. The screening of the Berlin Wall is among the multitude of prestigious projects that his company have achieved over 30 years in this area of landscaping expertise.

BLAZERS

Present yourself and your profession with pride with the official BIGGA blazer. Supplied complete with embroidered BIGGA logo, this is a quality garment which will give many years of service.

£87.⁹⁵
Including Post and Packing

TIES

Available in Navy, Light Blue or Green

£4.50



To: BIGGA, Aldwark Manor, Aldwark, Aline, York, North Yorkshire YO6 2NF. Please supply the following items. My cheque for £..... is enclosed.

Item:..... Size:..... Colour:.....

Item:..... Size:..... Colour:.....

NAME:.....

ADDRESS:.....

Note: your cheque will not be cashed until your order is despatched.



TRANSFORM YOUR GOLF COURSE 'OVERNIGHT'

Create immediate impact overnight with mature trees and shrubs from Belwood. We are one of the largest tree nurseries in Europe, specialising in the production of semi-mature trees and shrubs, with comprehensive listings of deciduous and coniferous trees and shrubs, which we distribute nationally.

Although we specialise in large rootballed trees, we can also offer many varieties of whips and sizes through to standard trees supplied bare root from our nurseries in Perthshire.

For catalogue and information contact:

Belwood Nurseries Limited, Mauricewood Mains, Penicuik, Midlothian EH26 0NJ
Telephone: 0968 673621 Fax: 0968 678354

AD REF 331

Congratulations to GREG NORMAN on winning the 122nd Open Championship and to Derek Scarborough and his team for a true Championship course at Royal St George's

Watermation
IRRIGATION SYSTEMS

Chosen for the best places!

See us on Stand M30 and 31 at the IOG Show

AD REF 33

GREENKEEPERS' CAP



This smart NEW Greenkeepers' Cap is available in blue and comes complete with BIGGA logo. *It's just the job for summer!* Similar to baseball caps, our Cap is fully adjustable and made from lightweight material.

£6.95

including post/packing

To: BIGGA, Aldwark Manor, Aldwark, Ane, York, North Yorkshire YO6 2NF.

Please supply..... (quantity) of Greenkeepers' Cap(s) at £6.95 including post and packing. Please make cheques payable to BIGGA and post with order.

NAME:

ADDRESS:

Note: your cheque will not be cashed until your order is despatched.

Gl.8.93

NORTH STAFFS IRRIGATION

An Independent Company



At North Staffs Irrigation we can offer a range of equipment suitable for your irrigation project. A full design and installation service is provided ensuring an effective and efficient system tailored to your individual needs. We offer:

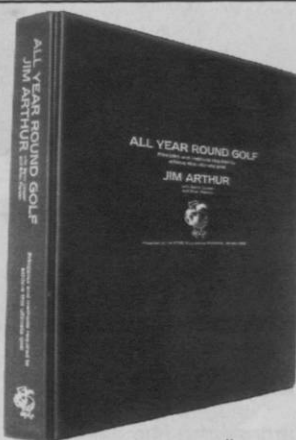
- ★ Fully automatic Irrigation Systems (including greens, tees, approaches, etc.)
- ★ Manual Control Irrigation Systems
- ★ Phased Installations (allowing a basic water supply to be built upon to achieve full automatic irrigation over a period to suit your available finance)

Recent contracts include: Bangor, Sherwood Forest, Fairhaven, Beau Desert, Prestatyn, Accrington, etc, etc.

Contact us on 0785 812706, Fax 0782 395734 or at Ivy Mill, Longton Road, Stone, Staffordshire ST15 8TB.

We are founder members of the BTLIA.

AD REF 217



BIGGA BOOKS

ALL YEAR ROUND GOLF
- Principles and methods required to achieve this ultimate goal
by JIM ARTHUR

with Barry Cooper and Brian Pierson

172 pages of no-nonsense advice on practically every aspect of golf course construction and maintenance. All Year Round Golf is a collection of articles written over two decades to point out that the basic principles of greenkeeping have not altered over the past century. First presented as part of a BTME Educational Workshop 1993.

£29.95 inc. post and packing

Manual on Golf Course Construction, Turf Establishment and Cultural Practices

by Dr James Beard.....£22.00 inc. post and packing

Code of Practice for the use of Approved Pesticides in Amenity and Industrial Areas

.....£12.00 inc. post and packing

Golf Course Presentation
by John Hacker and George Shiels

48 pages packed with a realistic and practical approach to this vital topic. Thought provoking and written by two leading agronomists....£7.95 inc. post and packing

Specifications for a Method of Putting Green Construction

edited by William H Bengeyfield.....£2.50 inc. post and packing

To: BIGGA, Aldwark Manor, Aldwark, Ane, York, North Yorkshire YO6 2NF.

Please supply the following book(s). My cheque for £..... is enclosed.

Book(s) required:

NAME:

ADDRESS:

Note: your cheque will not be cashed until your order is despatched.

Gl.8.93

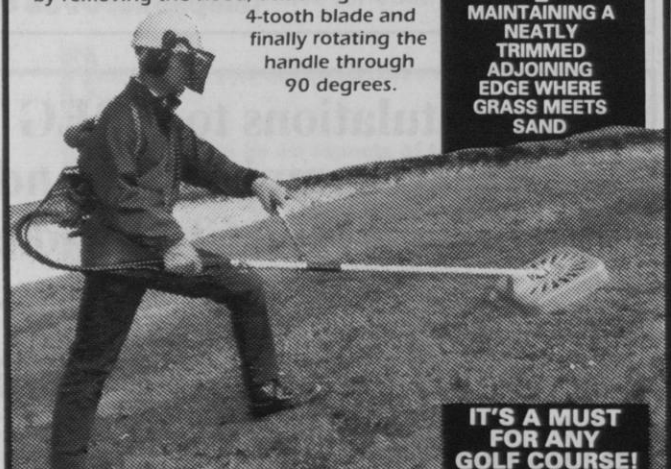
NIKKEN KNAPSACK BRUSH CUTTER/MOWER

The Nikken fitted with its unique hover hood gives total flexibility and freedom of movement, giving a very neat finish to your bunker slopes and banks.

The operator can either mow from inside the bunker mowing uphill or mow from the top reaching down into the bunker, both achieved with total ease.

Flying sand is no problem with Nikken due to all sensitive components being protected and out of harm's way on operator's back, which only weighs 12lbs.

Edges can be quickly and neatly trimmed by removing the hood, attaching a small 4-tooth blade and finally rotating the handle through 90 degrees.



THREE PROBLEMS WITH ONE SINGLE SOLUTION

■ SUCCESSFUL MOWING OF STEEP BANKS & SLOPES THAT COVER MOST BUNKERS

■ NO ENGINE FAILURE DUE TO FLYING SAND THAT CAUSES MOST REGULAR MACHINE BREAK DOWNS

■ MAINTAINING A NEATLY TRIMMED ADJOINING EDGE WHERE GRASS MEETS SAND

IT'S A MUST FOR ANY GOLF COURSE!

Send for details now to: **DIXON & HOLLIDAY LTD**
Unit 22, Bassett Down Ind. Estate, Hay Lane, Swindon, Wiltshire SN4 9QP
Tel. Sales: 0462 700547 • Works: 0793 845199 • Fax: 0793 845191

AD REF 214

Make a date for the IoG Show in Peterborough, at the East of England showground between September 7-9. It's a historic occasion – the 49th and final event to be called the IoG Show, as next year there's a change of name and a change of venue. On Pages 31-35, we preview some of the companies and some of the products you can expect to see

IoG

SHOW PREVIEW

The annual Institute of Groundsmanship Trade Exhibition rounds off the many valuable golf shows held throughout the year by presenting, at one venue, the methods and technology for other hard-used sports surfaces such as rugby pitches and grass tennis courts, which can be brought to bear on golf course management.

This year's 48th international exhibition is well into the usual hectic final booking period with exhibitors vying with each other to publicise new launches at the show. Even though the rate of golf course development slowed down in the UK this year, a record number of courses still opened for play despite the recession and the rising demand for play on existing courses means that greenkeepers and committees need more than ever to keep themselves informed about the latest methods, products and legislation affecting the running of their clubs.

A new-look IoG '93 provides for computerised visitor registration, carefully targeted invitations to internationally important sectors of the industry – including golf greenkeepers – improved catering and revised opening hours, from 9am to 4pm every day.

The last exhibition to be held at Peterborough (next year it will be renamed and staged at Windsor Racecourse near London) IoG '93 bookings stood at 217 exhibitors by the middle of July and were rising rapidly. Nearly ten per cent have never attended the IoG exhibition before and several companies, such as Atterton & Ellis and Garfitts, have increased their original stand sizes.

On arrival, visitors could begin by meeting colleagues at the BIGGA tent (C77) and then visit the Education Pavilion to chat with the Health and Safety Executive (B33) and personnel from the Department of Environment's Toxic Substances Division (B16). The National Turfgrass Council (B7) and the Sports Turf Research Institute (PC53, 24-25) will also be there to offer advice, not forgetting the IoG's own consultancy service (Members Pavilion, Row F), and a further 24 education, training and professional organisations.

Over 52 product categories from fertilisers and feeds to tyres and vehicles are on display and with so many new exhibitors and prod-

ucts, members can be confident of an enjoyable and worthwhile day out at Peterborough. There were 31 companies showing golf course furniture equipment last year. Some that will be in attendance this year are Barlow Tyrie (M7-9), Better Methods Europe (PC52 1-2), BLEC (Demo 4 58-68), Gannon (E61-62), Golf Mats UK (PC52 1-2) Lappsett (D56-61) and Rigby Taylor (L39-41/51-53). Top dressing and fertiliser suppliers to visit include ICI (K42-45), Farmura (L13-14) and Gem Professional (PC51 7-8). The full range of irrigation equipment is represented by firms like Attack Engineering (H62-63), ILS Irrigation (G40),

Prime Waterman (D37-37A) and Watermation (M30-31) up to the latest computerised systems.

Plentiful free parking, improved facilities and a regular shuttle service between Peterborough BR Station and the showground should make your visit a pleasant one and the new format official catalogue is still probably the best industry year-book for products and services to be had. Further information can be obtained from Anne Haddon, Exhibition Administrator, IoG, 19-23 Church Street, The Agora, Wolverton, Milton Keynes, Bucks MK12 SLG, telephone 0908 311856.



The ultimate 'green' vehicle, outdoor barbecues and many, many trade stands: some of the events from last year you're certain to see again at this year's show



New "GREENKEEPER SPRAYER"

Boom Sprayer System

- Battery Operated Pump
- Variable Application rate
- Versatile Nozzle Settings
- Greater Penetration & Coverage
- Requires No Mechanical Drive
- No Hand Pumping
- Self Cleaning - Easily Maintained

Ideal for application of fertilisers, feeds, wetting agents etc. to small to medium sized areas of turf. Features 24hr continuous running time, sturdy weather-proof chassis, pneumatic tyres and folding handle bars for compact storage and transport.

BOWMAN

PRODUCTS
Ltd.

TEL: 0706 882291 FAX: 0706 291000
ROYTON-OLDHAM

AD
REF
415

BLEC

LANDSCAPING EQUIPMENT



STONEBURIER



CULTIPACK SEEDER

See us on
Open Stand
Demo 4
58-68 at the
IoG Show

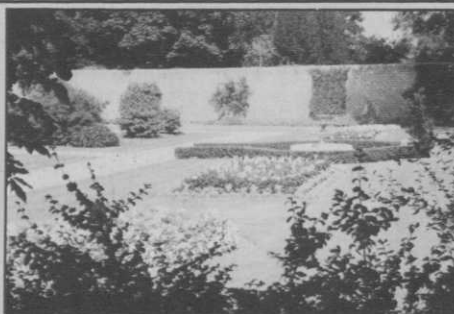
SUPPLIERS OF A WIDE RANGE OF LANDSCAPING AND TURF CARE MACHINERY

73 Riverside, Deeping Gate, Peterborough PE6 9AR

Tel: 0778 342829

Fax: 0778 341098

AD
REF
98



BRITISH OVERHEAD IRRIGATION LIMITED

UPPER HALLIFORD GREEN, SHEPPERTON, MIDDLESEX, TW17 8SB.
TELEPHONE: 0932-788301

See us on Open Area
B at the IoG Show

FACSIMILE: 0932-780437.



BRITISH TURF
& LANDSCAPE
IRRIGATION
ASSOCIATION

WORKING WONDERS WITH WATER - SINCE 1923

Traction WITH Flotation

The choice is yours - Choose

TRELLEBORG TYRES

We at TRELLEBORG have continued to develop Low Ground Pressure tyres over the thirty-plus years we have been making them. You may not notice the unique construction, or the specially produced different rubber compounds for the various components in the tyre, but once you try them, you will certainly notice the beneficial effects of our hard work over the years. Traction and lowground pressure can certainly go together, IF you use TRELLEBORG TYRES.

TALK TO THE EXPERTS - TALK TO TRELLEBORG

Trelleborg Limited, 90 Somers Road, Rugby, Warwickshire CV22 7ED. Tel: 0788 562711

See us on
Stand H40
and 41 at
the IoG
Show



AD
REF
137

The **Civic Trees Group** (stand D84-87) grow, supply and transport semi-mature trees and carry out large and small landscape projects for government agencies, councils, golf clubs, developers and industry and commerce generally, throughout mainland Britain. British grown, high quality large and semi-mature trees from their own nurseries, established over thirty years, are the best buy by far since sterling devaluation in 1962.

The Civic Trees Group hire out tractor-mounted tree spades for transporting customers' own trees and works to BS 4043. Trees they transplant can be maintained and guaranteed by them for two or more years to achieve complete success, yet remain within budget prices. Free consultations and site visits are available and catalogues may be had on request.

Kubota (UK) Ltd, the leading compact tractor specialists, (stand nos C69/79 and 72/75 and demo site stand 5, areas 14/15) are displaying a number of new machines at IoG '93. The line-up includes a new tractor and new mowers for the professional operator.

From their extensive machinery range Kubota are showing the complete B50 series of compact tractors, which comprises the 17hp B1550, the 20hp B2150 and the 24hp B2150.



Kubota's 18hp F1900 ride-on front mounted mower

Larger tractors featured from the L series included the 40hp L3250 and the 60hp L5450.

Also on show are ride-on mowers, including the professional 18hp G1900 with 4 wheel steer, and the latest in mower technology, the zero turn FZ2400 and the 18hp F1900.

Power products featured include portable generators and pumps together with brush cutters and hedge trimmers.

City Irrigation (stands PSC1 45/46) will be exhibiting components as installed in their watering systems for all areas, notably for the automatic watering of golf greens, tees and fairways. The two principals of the company have over 60 years experience between them in designing and installing automatic irrigation for golf courses in the UK and other European countries, including the Middle and Far East. With some 300 golf courses concentrated in London and the Home Counties, the company now concentrates in this area on the provision of new installations and up-grading older systems.

Martin Bromage Tree Care offer a comprehensive arboricultural service nationwide. Experts in supply, planting and maintenance of semi-mature trees, the company undertakes major contracts for a wide range of clients. Transplanting of trees using their modern fleet of tree spades is regularly undertaken with excellent success rates and machines with a rootball size of up to 2.1m may be hired, along with experienced operators.

Dedicated to the supply of a complete arboricultural service, the Tree Surgery Division of Martin Bromage Tree Care offers services such as stump removal and brushwood chipping as an integral part of the operation. Highly skilled staff and modern mechanised techniques enable the company to offer competitive quotations.

Trelleborg Limited (stand H40/41) manufactures a very wide range of tyres and rims for different applications, such as low ground pressure wheels for grassland tractors, trailers or implements and also for farm and forestry applications. Our staff have a high level of experience and will help you with your tyre requirements. We will be pleased to listen to your needs and will make recommendations that are sure to suit. We can, of course, make site visits if you have a particular problem and

Exciting times for Patisson

As from the 5th July 1993 "H. Patisson & Co Ltd" came under new management. The family owned company, established in 1897 has been bought out by Mr J. F. Hinch and his family. "Over the past year there has obviously been a lot of speculation about Patisson & Co. It is our intention to continue to build the company on the family platform that has been established," said the new Managing Director Mike Hinch. "There are quite a few internal changes that are needed to ensure our service and quality of our product is 100%."

The Luton based Company supplies the majority of Golf Clubs in the UK with products such as Flag Pins, Flags, Hole Cups and an extensive range of furnishings and equipment. The product range is large enough to cater for any request from any type of sporting club including driving ranges.

Patissons have also acquired "F.

J. Walton Productions" who make membership tags to meet most specifications. Mr Hinch feels that the personalised badges add nicely to the quality of the products already in the Patisson portfolio.

The established UK Company has also made good inroads into Europe, supplying distributors in Holland, France, Italy, Spain and Portugal. Mike Hinch goes on to say: "This we see as a great potential market that has not been explored thoroughly. We will be looking at our operation very closely to build a solid reputation throughout Europe."

"Patissons can deliver anywhere in the world and it was only recently that we supplied golf equipment to a club in Fiji."

The Company itself seems to be heading for exciting times. Mr Hinch said he will be attending the IoG Exhibition at Peterborough where Patissons have a stand.



MANUFACTURERS & SUPPLIERS OF GOLF COURSE AND DRIVING RANGE EQUIPMENT.

RANGE EQUIPMENT INCLUDES:

- Play Off Mats from £147.00
- Ball Dispensers from £2680.00
- Ball Collectors from £1865.00
- Distance Discs from £44.00 (with posts!)

AND OUR GOLF COURSE ACCESSORIES:

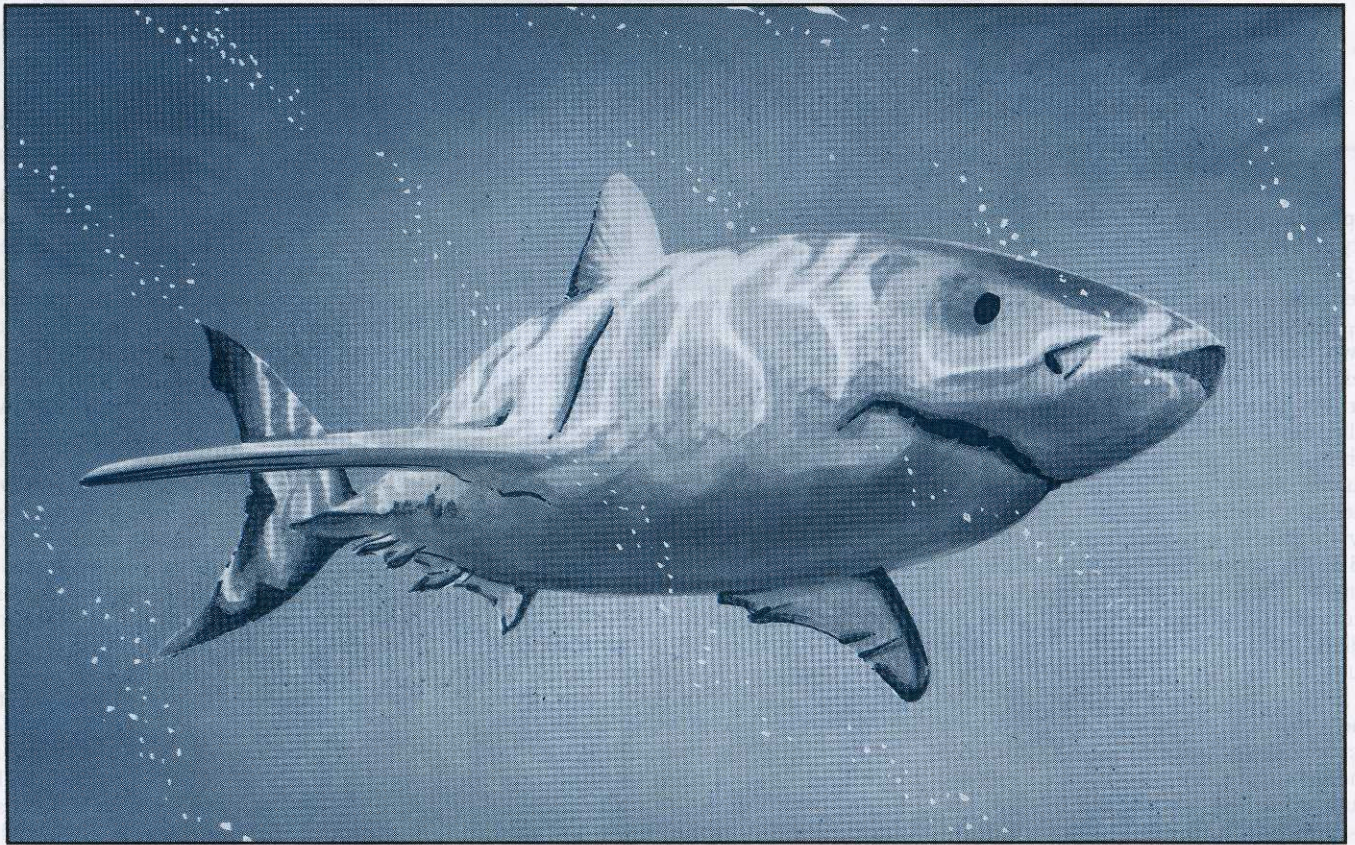
- Tee Markers from £2.40
- Putting Green Markers from £2.80 (New fibreglass model)
- Flag Pins 6ft white from £4.30
- New material flags from £1.35
- Boot & Shoe Cleaner Electric model from £465.00

The best does not have to cost the most!

PATISSON & CO LTD

342 Selbourne Road, Luton, Beds LU4 8NU
Tel: 0582 597262 Fax: 0582 505241

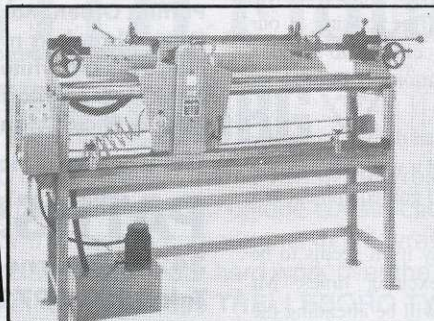
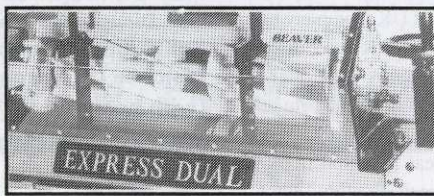
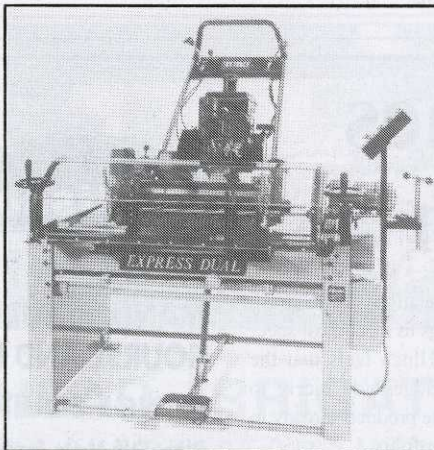
SEE US ON STAND E36/37 AT THE IOG SHOW



RAZOR SHARP EVERY TIME

Often described as the most efficient machine in the sea, we liken this beautifully designed beast to our grinders. Capable of completing their task with the most ruthless efficiency, both are designed and fine tuned to provide the optimum performance.

Take our internationally acclaimed **EXPRESS DUAL** - frankly, there's nothing else quite like it available today. It will sharpen the cylinder whilst still in-situ in the cutting unit, avoiding the strip-down during the busy periods. It will just as accurately and efficiently grind the cylinder separately when the unit's stripped down for maintenance.



Our **ANGLEMASTER** bottom blade grinder performs with the same accuracy and efficiency, to provide the ultimate duo for today's modern workshop.

They say 'first impressions count' - when you see an Atterton grinder, it just looks right - when you see how it performs, you know it's right - when you experience the reliability and service back-up, you know you've chosen right.

You won't find Atterton's in the same habitat as our fearless friend, but we can safely say you will all over the world, on the dry bits! However, what we really do have in common is..."RAZOR SHARP, EVERY TIME!"

**SEE US AT THE
IOG SHOW
STAND I 42/43**

**ATTERTON
& ELLIS LTD**
Iron Works, Haverhill,
Suffolk CB9 8QH
Tel: 0440 702312
Fax: 0440 712138

the quality of our product and service is second to none.

For many years **Undergear** have specialised in tyres for golf course machinery. In addition to carrying stocks of the Goodyear Terra-Tyre (for which they are the sole UK distributor), Undergear have developed their own 'Golf' tyres for tractors and larger course equipment. The 'Golf' tyre has a broad flat tread and smoothly rounded shoulders to avoid marking during turning and the fine block tread pattern gives very good traction without marking. Many leading courses benefit from the superior performance of the 'Golf' tyre. Call on stand K1 to see our range and get expert advice on tyres to suit your machinery.

Rolawn (Turf Growers) Ltd (stand PSC1-10/11/12) will be showing its new and innovative 'Turfmaster' machine, which has been specially designed for use in places where, in the past, limited access has proven difficult for the greenkeeper to lay cultivated turf. Turfmaster is extremely versatile, manufactured in steel and measuring 5' 2" x 3' x 4' and weighing 260lbs. It incorporates a hydraulic control system for raising and lowering rolls and has a useful semi-automatic lowering device which can be used simultaneously when the laying



Rolawn's new Turfmaster laying machine

process is being carried out.

Turfmaster, which can be used by hand or towed behind a small tractor, is the latest machine to be added to the Rolawn range of laying equipment, which is supplied on loan, free of charge. Turfmaster can also be purchased at a special introductory price of £975. In addition, Rolawn will be displaying its mechanised big-roll, turf laying equipment and its extensive range of weed-free cultivated turf.

Farmura will be displaying their full range of turf management and landscape products – all of which are either organic or environmentally sensitive. Alongside the well known range of liquid organics, emphasis will be given to the new range of Flo Gro Super Concentrates, which are 2-5 times more concentrated than solutions – they offer major benefits in packaging, transport and distribution. Also, the new Blazon spray pattern indicator – Soluble E-Zee

Paks – will be shown for the first time, together with the well known Blazon 1 litre packs. Of particular interest to landscapers is the Superpaver grass reinforcement system for load-bearing green areas – up to 100 tonnes per square metre is possible.

Soil conditioners and Ferrosol Liquid Iron complete the range, together with Earthbound for hydraseeding which eliminates the need for mulches. Come and see us on stand no. L13 and get details of our exciting promotion – with the winner going to the American Golf Course Show and all entrants receiving a free camera!

Standard Golf (UK) Ltd and **Envirogreen Limited** (stand D68-69) will exhibit the world renowned Standard Golf of America's golf course furniture and equipment, including the new Tour Smooth rake. They will also launch their golf driving range equipment made in the UK, including their exclusive range and winter tee mat, which has a one year guarantee. The Golpet tee-up machine will be on display together with other unique equipment.

Envirogreen's new Envirosafe will be on show together with details of their services for chemical waste disposal, which includes contracts for empty chemical containers and unwanted chemical disposal. Pathmaker, a



At long last -
THE PROFESSIONAL ANSWER

2 in 1 MOWER OPTION
ADD A FULLY
HYDRAULIC
HI-SPEC CYLINDER
MOWER TO YOUR
OUT-FRONT
ROTARY



See us at I. O. G.

STAND
L45, 46, 47

AVAILABLE TO FIT
ALL MAKES
0939 235044



- * 84 inch cutting width
- * Lever controls.
- * Outer heads can be raised individually and are fitted with automatic shut-off valves.
- * Quick-attach tractor mount for easy coupling.
- * All heads can be lifted whilst moving for ease of turning.
- * On/Off rocker switch that lifts and stops all cylinders.
- * 3 x 30" x 8" 6-bladed cylinders fitted as standard.



Est. 1969

ENGINEERING DEVELOPMENTS

The Brewery Park Industrial Estate, New Street, Wem, Shrops. SY4 5DT
Tel: 0939 . 235044/233213 Fax: 0939 . 233682

AD REF 62

LOCKWOOD GRASS MACHINERY

LESCO THE GREENS MACHINE THAT
MAKES ECONOMIC SENSE FOR
TODAY'S GOLF COURSE



SEE US ON STAND K11, 12 and 13 AT THE IOG SHOW

Unit 17 Greenwich Close, Landseer Road, Ipswich, Suffolk IP3 0DD
Telephone: (0473) 289158 Mobile: 0850 745055 Fax: (0473) 289161



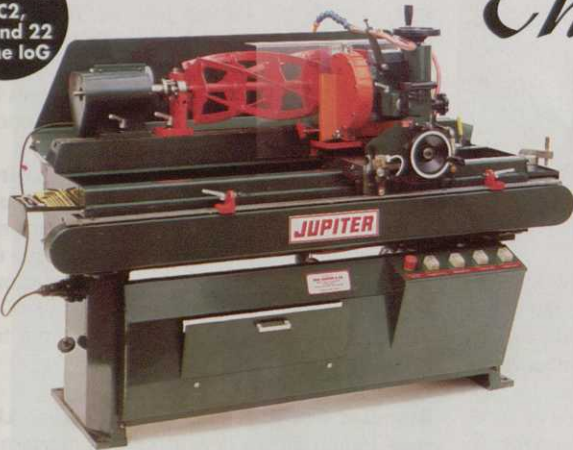
AD REF 418



ERIC HUNTER GRINDERS LTD

HOBSON INDUSTRIAL ESTATE, BURNOPFIELD, NEWCASTLE UPON TYNE,
NE16 6EB. TEL: (0207) 70316 FAX: (0207) 70312

See us on Stand PC2, 21 and 22 at the loG



42" capacity Mower Cylinder and Bottom Blade Grinding Machine. A truly 'precision' grinder, built to last half a century. Used and preferred by professionals.

The Rolls Royce Range



The NEW JUNO 36" capacity Cylinder and Bottom Blade Grinder will accommodate every make and type of Professional and Domestic cutting cylinders and soleplates. Simple to operate, fast changeover from cylinder to bottom blade grinding.

Quality engineering at its accurate best. Improve standards - cut costs

THESE CLUBS ALREADY DO IT!

- Bramley Golf Club
- Caldry Golf Club
- Carnoustie Golf Links
- Cawdor Golf Club
- Charleslands Leisure (Co. Wicklow)
- Chirk Castle Golf Course
- Collingtree Leisure
- Crompton & Royton Golf Club
- Delapre Golf Complex
- Eaton Golf Club
- Ely City Golf Club
- Gleneagles Hotel
- Goring and Streetley
- Haggis Castle Club
- Harpenden Golf Club
- Kinross (Green Hotel)
- Leek Golf Club
- Lingfield Park
- Massereene Golf Club
- Mere Golf & Country Club
- Milltown Golf Club (Dublin)
- Mold Golf Club
- Muirfield (Gullane) Golf Club
- Newbury & Crookham Golf Club
- Northwood Golf Club
- Omonde Fields Golf Club
- Pitdown Golf Club
- Ponteland Golf Club
- Royal Ashdown Forest Golf Club
- Royal Dornoch Golf Club
- Royal Liverpool Golf Club
- Rye Golf Club
- St Andrews
- Staley Hall G&C Club
- South Moor Golf Club
- Tehidy Park Golf Course
- Telford Golf Club
- Turnberry Hotel
- Whitecraigs Golf Club

AD REF 73

INTURFTM ILLUSTRATED

See us on Stand K17-18 at the loG Show



WE ARE REGISTERED FOR BS 5750 QUALITY ASSURANCE OFFERING THE MOST EFFECTIVE AND COMPREHENSIVE TURF SUPPLY AND TURF INSTALLATION SERVICE ANYWHERE!

INTURFTM

Inturf Limited, Regent Street, Pocklington, York YO4 2QN
Telephone (0759) 304101 Fax (0759) 305229

For Scotland Telephone 031 663 6617/8/9 Fax 031 663 0651



WE GROW FIVE STANDARD GRADES OF TURF PLUS ANY GRADE OF CUSTOM TURF FOR ALL SPORTS & AMENITY USE. AVAILABLE FROM NURSERIES AND DISTRIBUTORS NATIONWIDE.



WE CAN SUPPLY ONLY OR SUPPLY AND LAY STANDARD ROLLS OF TURF, THE BIG ROLLS OF TURF AND UNIQUE 'LAY AND PLAY' TURF TILES.



AD REF 31