

"Blazon" is a totally water soluble, non-toxic, non-staining colourant which when added to spray solutions indicates at a glance where the operator has or has not sprayed. "Blazon" can be added to the spray solution of insecticides, fungicides, weedkillers, wormkillers, wetting agents, liquid fertilisers and grass growth retardants. "Blazon", when mixed with spray solutions produces a temporary blue/green colour which dissipates by rainfall, dew or even sunlight alone. "Blazon" is safe to use, indicates at a glance blocked spray nozzles and can be easily washed from hands and clothing.

**MAXWELL HART .....Stand No. B111A**  
 612 Reading Road, Winnersh, Berks RG11 5HF  
 Tel: 0734-785655 Fax: 0734-785805  
 Contact: Patrick Lilley

Maxwell Hart will be exhibiting a complete new range of liquid fertilizers and soil conditioners - Quantum Flowable, Ferrus Green, Sane 'N' and new from Ireland Abbey Organic. All of these products have been developed with top quality materials but at economic rates to meet your budget demands. Also on display will be a completely new range of colourants for turf management. Following the launch of Turfmark spray colourant, Maxwell Hart are pleased to release Green Lawnger, Lake Magic and Mulch Magic. A warm welcome awaits you on Stand B111A.

**MULTI-CORE AERATORS LTD .....Stand No. A95A**  
 229 Higher Meadow, Clayton Le Woods, Leyland, Lancs PR5 2RR  
 Tel/Fax: 0772-451959  
 Contact: Ian Waddington

The Palmer Multi-Core range of hollow tining machines can be seen at the BIGGA Exhibition at Harrogate on Stand A95A. Multi-Core Aerators Ltd import the whole range of machines and spare parts. We have two sizes of tractor mounted machine, one contractor self propelled and two pedestrian, one steering and one with front roller in the range. There are a number of different style heads and tines

to suit individual needs. The machinery can also be hired, but as this is very popular an early phone call would avoid disappointment.

**NATIONAL TURFGRASS COUNCIL .....Stand No. C41A**  
 9 Ferrands Park Way, Harden, Bingley, West Yorks BD16 1HZ  
 Tel: 0535-273188  
 Contact: John Shildrick

The National Turfgrass Council is the national organisation concerned with all outdoor amenity grass and non-grass surfaces used for sport or recreation. We link together 23 Member Organisations, 40 Patrons and a widespread Associate Membership. Our display shows our current activities on behalf of the industry, our forthcoming events, and our range of publications.


**NETLON LIMITED .....Stand No. A65**  
 Kelly Street, Blackburn, Lancs BB2 4PJ  
 Tel: 0254-262431 Fax: 0254-680008  
 Contact: Peter Langley

Netlon Advanced Turf Systems provide natural turf with inbuilt resilience, durability and a unique *self-cultivating* action. The result is turf which not only withstands extensive use but demands less maintenance. Reducing divot size, halving recovery time and resisting soil compaction makes Netlon Advanced Turf ideal for tees and greens. Grassed parking areas and trolley paths also become more hard wearing. The secret is thousands of 100 mm x 50 mm polypropylene mesh elements blended into a selected rootzone medium. These flex during play and maintenance to create voids that ensure that the surface always drains quickly and the turf remains healthy.

**OAKLANDS COLLEGE.....Stand No. C47B**  
 Oaklands Campus, Hatfield Road, St Albans, Herts AL4 0JA  
 Tel: 0727-50651  
 Contact: Ian Merrick

The College offers a wide range of training courses for the profes-

**A BRAND NEW PRODUCT FOR GREENKEEPERS**



# Hole-in-White™

## EUROPE

A fast, efficient way of colouring the inside of a putting hole. Supplied complete.

Skinners Farm,  
 Eppings Lane,  
 Stapleford  
 Tawney,  
 Romford,  
 Essex RM4 1ST  
 Tel: (04028) 435

See us on Stand A9 at BTME '92

AD REF 350

## FIRST CHOICE FOR GOLF TURF CARE PRODUCTS

# STA-BRITE

STA-BRITE SUPPLIES LIMITED

Prompt Delivery  
 Competitive Prices  
 Complete Turf Care Range

FERTILISERS	STA-GREEN, Schweizer, Supaturf
GRASS SEED	STA-BRITE HI-FLIERS, Sharpes, Mommersteeg, Supaturf
CHEMICALS & CDA	Rhone-Poulenc, Vitax, Nomix-Chipman
WETTING AGENTS	Aqua-Gro, Advantage, Organiflo, Turfex
TOP DRESSINGS	STA-BRITE 70/30 & 60/40 bagged leading dressings bagged & loose
GOLF EQUIPMENT	Tacit range + hole cups, flagstuffs, flags, tee mats, tee markers, signs

See us on Stand **A13** at BTME '92

STA-BRITE SUPPLIES LIMITED  
 Unit 7 Bessemer Park, Bessemer Road  
 BASINGSTOKE, Hants RG21 3NB  
 Tel: (0256) 811811 Fax: 811078

AD REF 66

sional greenkeeper.

Full-time courses – 1 year course leading to the National Certificate in Greenkeeping and Sports Turf Management.

Part-time courses – Phase 1 and 2 Greenkeeping and Sports Turf Management; Parts 1 and 2 Horticultural Mechanics; Phase IV Business Management.

Short Course Programme – a full range of short one or two day courses designed especially for the greenkeeper. The College also offers a full training and technical consultancy package. For full details of all our courses and services, please write to the Recruitment Secretary.

**OTTERBINE AERATORS.....Stand No. A21**

3840 Main Road East, Emmaus, Pennsylvania 18049, USA

Tel: 215-965-6018 Fax: 215-965-6050

Contact: Charlie Barebo

Otterbine Aerators can help keep irrigation waters clean. This full-time management tool reduces bottom sludge, algae, aquatic weeds and foul aquatic odours through a process called Aeration. Mechanical aerators pull cold dense bottom waters upward and throw them into the air where they collect atmospheric oxygen. This circulation and oxygenation helps speed biological clean-up process. Mechanical aerators are effective when the stress on the aquatic ecosystem is greatest during calm, still and cloudy days. Otterbine supplies a self-contained compact system with over 100,000 installations throughout the world. Contact Golf Course Services, our exclusive English distributor at 0858-410085 for more details.

**H PATTISSON & CO LTD.....Stand No. B71**

342 Selbourne Road, Luton, Beds LU4 8NU

Tel: 0582-597262

Contact: Peter Dell

On display will be the most up-to-date range of golf course, practice ground, and golf range equipment manufactured in Britain. Pattisson, being Europe's largest and leading golf accessory distrib-

utor will be demonstrating the latest in custom credit card ball dispensers and a new style bogey hole cup, and improved winter golf mats, new litter bins and an even stronger material type 5" tee marker.

**PRIME WATERMEN LTD.....Stand No. B109**

Wangford, Beccles, Suffolk NR34 8AX

Tel: 050-278-481 Fax: 050-278-729

Contact: Glyn Prime

Prime Watermen Ltd are main agents for the WEATHER-MATIC range of irrigation equipment as well as being designers and installers of complete irrigation packages tailor-made for turf, landscape and sports applications. The WEATHER-MATIC range comprises impact and gear driven pop-up sprinklers together with remote control valves from brass and plastic materials and electrical controllers giving microprocessor accuracy at traditional mechanical controller costs. Along with this, PRIME WATERMEN LTD have introduced a three-wire, remote-valve control system which gives a visual display and permanent printed record of the date and time of irrigation periods, watering times for individual stations and water usage.

**PROFESSIONAL SPORTSTURF DESIGN ASSOCIATES**



.....Stand No. A31

75 Garstang Road, Preston, Lancs PR1 1LD

Tel: 0772-884450 Fax: 0772-884445

Contact: John Hacker

Professional Sportsturf Design Associates provide a complete agronomic consultancy service for the golf course. Whether upgrading a mature course to cope with today's increased play or developing a new course, Professional Sportsturf Design Associates can help you. Many mature golf courses are suffering severe agronomic problems and Professional Sportsturf Design Associates can provide the technical and analytical support necessary for a busy greenkeeping team. New golf courses are being planned every week. Having Prof-



**Manufacturers & Suppliers of  
Golf Course and Driving Range Equipment.**

Practice Mats to Ball Collectors  
Hole Cups to Tee Markers.  
The Complete Range  
Send for Catalogue

**PATTISSON & CO LTD**  
342 Selbourne Road, Luton, Beds LU4 8NU  
Tel: 0582 597262. Fax: 0582 505241

AD  
REF  
35

# HUXLEYS

## All-season turf maintenance



HU84 Multi-Depth  
Aerator



358  
Greensmower

See us  
on Stand  
**A57**  
at BTME  
'92



TR84 Hydraulic  
Reelmower



Royer Soil Shredder  
and Powerscreen

Please call us for illustrated literature on our full product range  
and a no-obligation demonstration on your ground.



**HUXLEYS**  
GRASS MACHINERY

Huxleys Grass Machinery  
The Dean, New Alresford,  
Hampshire SO24 9BL  
Tel: 0962 733222 Fax: 0962 734702

AD  
REF  
60

Professional Sportsturf Design Associates act as Consultant-in-Charge will ensure a high quality, well managed project. Accurate working drawings, tender documents and careful site supervision ensure that you get the best value for money. See Mike Harbridge, John Hacker or Bill Gillespie on Stand A31 to discuss how we can help.

**RANSOMES SIMS & JEFFERIES LTD .....Stand No. A67**

Ransomes Way, Ipswich, Suffolk IP3 9QG  
 Tel: 0473-270000 Fax: 0473-270032

Contact: Richard Bishop

Ransomes position as a world leader in the production of grass cutting and turf care machinery will be illustrated at the exhibition, where the company will be showing a range of machines. The recently launched Greenspro 56, a highly sophisticated machine designed for precision cutting of fine turf, will be alongside the GT classic which has been developed from the popular Greens Triple Mower and offers high standards of finish with precise hand operated hydraulic controls and a choice of cutting units. Also on show will be one of a range of sweepers available from Ransomes. The Ransomes 250 Pedestrian Sweeper, with three brushes and a sweeping width of 30ins (76cm) will pick up leaves, grass, litter and cores from all areas of the golf course. Also on show will be a three wheel diesel Cushman Turf Truckster, the multi purpose system vehicle available with a range of attachments for all aspects of turf care.

**RHONE-POULENC ENVIRONMENTAL PRODUCTS**

.....Stand No. A15

Regent House, Hubert Road, Brentwood, Essex CM14 4TZ  
 Tel: 0277-261414 Fax: 0277-260621

Contact: Sion Price

Rhone-Poulenc Environmental Products has a lot on show at BTME '92 on Stand A15. TWISTER is a carbaryl product giving fast control of worms, and is recommended for use on all turf areas. CAST-AWAY PLUS, an established worm and leatherjacket control product is now also available as a CDA formulation. CDA CAST-AWAY PLUS gives an effective answer to the problem of casting worms at a total spray volume of only 10L/Ha. The extensive range of CDA products available from Rhone-Poulenc now totals seven including fungicides, selective herbicides, total herbicides and of course an insecticide/wormkiller. Following the development of a novel bleed valve system, the blue LANCELOT CDA lance can now be used to apply the range of CDA products directly from the bottles in which they are supplied. DATACHEM is a computer software programme to aid the amenity spray operator. Calibrations, costings, product volume requirements, conversions, data storage, legislative information and much, much more! Come and see all the beneficial features of DATACHEM for yourself.

**RIGBY TAYLOR LIMITED .....Stand No. A97**

Rigby Taylor House, Garside Street, Bolton, Lancs BL1 4AE  
 Tel: 0204-394888 Fax: 0204-385276

Contact: Clive Williams

Rigby Taylor will be featuring a product which is proving invaluable to all those involved in the management of sports turf and amenity grassland areas. Mascot Absorb 500 flowable charcoal deactivator can be used to de-activate hydraulic fluid, petroleum

product and pesticide spills. It is your insurance against spills and over-application of pesticides, and can be applied to turf areas that have been treated with herbicides, whenever re-seeding is needed earlier than planned. When early germination and grass cover is needed, Absorb 500 can enhance the germination of seed and is also suitable for sprayer cleaning after pesticide use. Visit the Rigby Taylor stand to see another new product!

**ROLAWN (TURF GROWERS) LTD.....Stand No. A61**

Elvington, York YO4 5AR

Tel: 0904-608661 Fax: 0904-608272

Contact: Rachel Semlyen

Rolawn supplies hundreds of golf courses in the UK and exports to Europe and Ireland. A unique background of research and development has resulted in turf specifically for the golf course of today, supplied throughout the year from local depots or from our headquarters.

ROLAWN ADVANTAGE – grown from exclusive seed mix, Poa free and closer mown to come into play early (within weeks depending on time of year).

ROLAWN SELECT – a fine, non-ryegrass turf for budget greens, surrounds.

ROLAWN OLYMPIC – well-known for tees.

ROLAWN MEDALLION – our most popular landscaping turf for hard-wearing tees.

NEW on the stand: FREE LOAN of Laying Equipment for turf cut in BIG ROLLS. See it and try it!

**RUFFORD TOP DRESS SUPPLIES LTD...Stand No. A91**

Acton Grange Quarry, Birchwood Lane, Moore, Warrington WA4 6XE

Tel: 0925-232476 Fax: 0925-574004

Contact: Peter Jefford

Rufford Topdress Supplies Ltd are leaders in the field of supplying golf courses and sportsgrounds throughout the U.K. with a superior range of topdressings and construction rootzone mixes. All Rufford's materials are produced from their own quarries. Working closely with prominent soil scientists and agronomists has enabled Rufford Topdress to set very high standards within the industry. A warm welcome awaits old and new customers.

**SAKER LEISURE LIMITED.....Stand No. A81**

Unit 42, Weston Industrial Estate, Honeybourne, Evesham, Worcs WR11 5QB

Tel: 0386-841380 Fax: 0386-841135

Contact: Carrie Burley

Saker Leisure Limited will be happy to discuss products from their golf range on stand A81. Products include a comprehensive range of Masters tee mats, including the new Masters Mat, specifically designed for the driving range, synthetic winter and target greens and a newly designed practice bay. Saker Leisure are members of the Synthetic Sports Surfaces Association (SSSA).

**THE SCOTTS COMPANY .....Stand No. B107**

14111 Scottslawn Road, Marysville, Ohio 43041, USA

Tel: 513-644-0011 Fax: 513-644-7679

Contact: Korbin Riley



For the installation, maintenance and repair of irrigation systems on golf courses, bowling greens, tennis courts and any playing areas, farms and garden sites.

# Irrigation System Service



Suppliers of galvanised PVC and polythene pipes and fittings, valves, pumps, agricultural and pop-up sprinklers and associated equipment.

Unit 18, Camphill Close, Dallamires Lane, Ripon, N. Yorks HG4 1TT  
 Tel: (0765) 602175. Fax: (0765) 603488. Directors: Eddie and Linda Simms

Area dealer for  

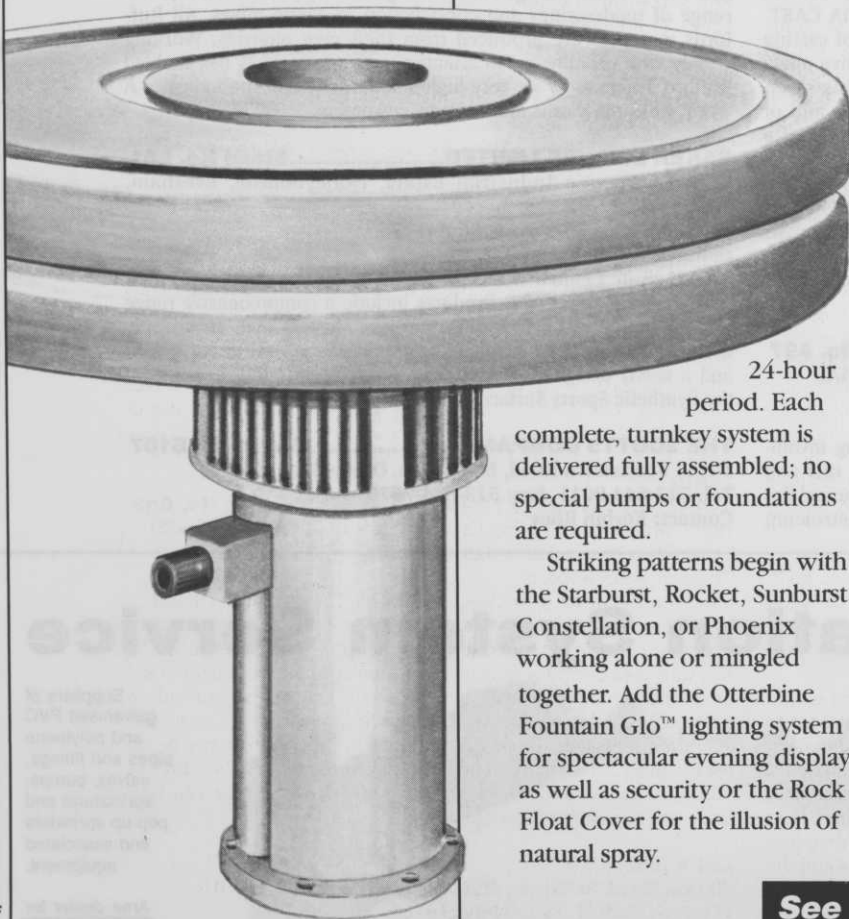

See us on the Toro/Lely Stand A53 at BTME '92

# Troubled waters?

## Otterbine Aerators

The prescription for troubled breathing, poor circulation, and changing temperatures in ponds and lakes is practical engineering that is esthetically pleasing.

These aerators range in power, circulating from 600,000 to 20 million gallons of water in a



24-hour period. Each complete, turnkey system is delivered fully assembled; no special pumps or foundations are required.

Striking patterns begin with the Starburst, Rocket, Sunburst, Constellation, or Phoenix working alone or mingled together. Add the Otterbine Fountain Glo™ lighting system for spectacular evening display as well as security or the Rock Float Cover for the illusion of natural spray.

Otterbine Aerators meet the water management needs of golf courses, parks, recreational lakes, office developments, and residential condominiums. Call or write for more information:

**Barebo Inc.**  
R.D. 2, P.O. Box 217  
Emmaus, PA 18049  
**USA**  
215/965-6018



**See Otterbine on BTME Stand A21**

**SIERRA UK LTD.....Stand No. A101**  
 61 Loughborough Road, West Bridgford, Nottingham NG2 7LA  
 Tel: 0602-455100 Fax: 0602-455311

Contact: Steve Gent

Sierra announce the completion of their range of controlled release fertilizers by introducing Sierrablen Mini 25-2-10 with a 6 month nutrient release period which will provide the ideal base fertilizer for all greens – but of special interest for sand construction greens where minimum leaching is so important. Sierra now offer Osmocote N – 39% controlled release Nitrogen for heavy use areas – especially golf tees – to be used on all tees at the venue for the 1993 Open – Royal St. Georges. And – Sierrablen Turfmix 28-5-7 for iron-ways – once per year application of all major nutrients and iron. And – Agroblen Tablets for 2-year feeding of newly planted trees.

**SISIS EQUIPMENT (MACCLESFIELD) LTD**

.....Stand No. A75  
 Hulley Road, Hurdsfield Industrial Estate, Macclesfield, Cheshire SK10 2LZ

Tel: 0625-503030 Fax: 0625-427426

Contact: Mrs L J Hilton

In February 1992 SISIS Equipment (Macclesfield) Ltd celebrate their Diamond Jubilee and their stand illustrates some milestones along the way. The BTME represents the first major exhibition in this historic year and SISIS Directors and Staff will be present to discuss all the latest additions to their ever growing range of aerators, scarifiers, top-dressers, sweepers, seeders, fertiliser spreaders, rakes, rollers, brushes, dragmats, etc. All the Company's products are still designed and developed in the United Kingdom although used in all continents of the world, including the USA, where the first SISIS Company outside Great Britain was established two years ago.

**C & P SOILCARE LTD.....Stand No. A23/25**

Unit 3 Bush Farm, Nedging, Ipswich, Suffolk IP7 7BL

Tel: 0449-741012 Fax: 0449-741012

Contact: Lynda Green

Information about the Terralift deep subsoil aeration and compaction relief system will be available. The new range of Soilcare activator products for soil health and vigour will also be on display. Armillatox, the completely organic and cost effective moss and algae control product with fungicidal properties is another unique product only available from C & P Soilcare.

**SPORTS TURF RESEARCH INSTITUTE...Stand No. C49**

Bingley, West Yorkshire BD16 1AU

Tel: 0274-565131 Fax: 0274-561891

Contact: Robert Taylor

The STRI exhibit will consist of an educational display encompassing current research projects, sportsfield construction, and problems which arise in turf maintenance. We have also expanded our services to include an advisory and consultancy service on golf course construction, together with conservation ecological management and design. Full details of all these services will be available on the stand and advisory staff will be available to answer queries relating to all aspects of turf management and construction.

STRI publications will also be available for purchase, including a new edition of 'Turfgrass Pests and Diseases' and 'Fertilisers in Turf Culture' by D.M. Lawson.

**STA-BRITE SUPPLIES LTD.....Stand No. A13**

Unit 7 Bessemer Park, Bessemer Road, Basingstoke, Hants RG21 3NB

Tel: 0256-811811 Fax: 0256-811078

Contact: Chris Sharp

Sta-Brite are major suppliers of top quality turfcare products to golf greenkeepers in the southern half of Britain. They will be pleased to discuss your needs for fertilisers, wetting agents, soil conditioners, grass seed, chemical products, top dressings, line marking systems, spreaders, sprayers and CDA applicators, golf course equipment, irrigation, parks furniture, tools and other equipment. Sta-Brite's own STA-GREEN fertilisers, HI-FLIERS grass seed, and top dressings will be on show, as well as Schweizer slow release fertilisers and the Rhone-Poulenc CDA system.

**SUPATURF PRODUCTS LTD.....Stand No. A11**

Amenity House, Maizefield, Hinckley, Leics LE10 1YE

Tel: 0455-234677 Fax: 0455-234714

Contact: D Marcus Palmer

Supaturf will launch their new reformulated spreadable soil wetting agent – Aqua-Gro 20:S, a more concentrated product that costs less to use. Restructured and with a higher active content, Aqua-Gro 20:S now offers a spreadable Aqua-Gro as effective as Aqua-Gro liquid at equivalent rates, with the added convenience of applying through a spreader, or by hand for spot treatment. The product is supplied in easy to open weatherproof 20kg bags. View also the Aqua-Gro Advantage system, using Aqua-Gro in a pellet form through a conventional hose pipe, and Cyto-Turf, a solution for the treatment of thatch and the promotion of healthy growth in turf, greens and tees.

**SUPREME MOWING.....Stand No. A71**

Wet Moor Lane, Wath-upon-Deerne, Rotherham S63 7LR

Tel: 0709-873436 Fax: 0709-878005

Contact: Linda Adams

Supreme Mowing supply high quality replacement cutting cylinders and bottom blades. Continuing their efforts to further improve the quality of grass care products, Supreme Mowing laid down plans to design and manufacture a range of new grinding machines with emphasis on accuracy and operator safety. After lengthy tests, the company launched their own 'Leader' range of grinding machines. Built around a modular concept, the 'Leader' enables the smallest of workshops to purchase a 'state of the art' grinding machine, assisting them to build up a good reputation. It is built around a solid free standing frame fitted with easily adjustable anti-vibration mounts, which when used in conjunction with the built-in spirit level enables quick and easy installation and the ability to re-site the machine without worry. Supreme Mowing claim to provide a machine to suit every size of operation, with the facility to upgrade the machine as needs dictate.

**TACIT.....Stand No. B3**

48 Hillmorton Road, Rugby, Warks CV22 5AD

Tel: 0788-568818 Fax: 0788-537485

Contact: Richard Webb

Looking for quality golf course equipment? Look for TACIT on stand B3. We shall be showing our established range, plus several new items such as the Trinity Holecutter, new anti-wear long life flagpole bung and vandal-proof yardage marker.

**TILLERS.....Stand No. C7/9**

Castlethorpe, Brigg, South Humberside

Tel: 0652-650555 Fax: 0652-650064

Contact: Tim Fell

If you are looking for turf for greens and tees, Tillers Turf Company gives you the best in quality and service. We offer top rated STRI cultivars, grown on sandy soils, and delivered to your club with mechanical off-loading, with a choice of big or small rolls. Associate company, Tillers Fibreturf, will demonstrate the construction of a tee using the unique reinforced Fibreturf rootzone. Fibreturf is the answer to compacted, muddy, uneven tees. Any golf club with tees showing problems due to heavy wear will benefit from the use of Fibreturf.

**TORO**

**TORO IRRIGATION LTD (UK).....Stand No. A53**

Unit 7 Millstream Trading Estate, Ringwood, Hants BH24 3SD

Tel: 0425-476261 Fax: 0425-472380

Contact: Peter Roberts

Main attraction for greenkeepers on the Toro Irrigation stand at Harrogate will be the new Network LTC golf course irrigation control system. Designed especially with Europe in mind, Network LTC software uses everyday irrigation terminology, can be programmed in metric or imperial and can speak six languages – including English! Not only does Network LTC provide step-by-step, on-screen operating messages, its point-and-shoot mouse reduces key board operation to a minimum. In addition to controllers, the full range of Toro gear driven pop up sprinklers – headed by the new 730 Golf Head will be displayed.

**LELY (UK) LTD**

Station Road, St, Neots, Huntingdon, Cambs PE19 1QH

Tel: 0480-76971 Fax: 0480-216167

Contact: David Boothby

Toro Commercial Products will be exhibiting 2 exciting new models for the 1992 season. The proven Reelmaster 216 is now powered by a 16 hp three cylinder water cooled diesel engine to



# NATIONAL EDUCATION CONFERENCE

**27-29 March 1992**  
**The Royal Agricultural College**  
**Cirencester**

For the fourth consecutive year, BIGGA's National Education Conference next spring will feature a programme of international speakers. The event is to be sponsored, once again, by **Lindum Turf and Associates**. The Conference programme will be available at the BTME from either the BIGGA or Lindum Turf stands.

*Some of the speakers and their topics are:*

Tom Cook, Associate Professor, Dept of Horticulture, Oregon State University: Maintaining Pure Bentgrass Greens: Is it possible in cool temperate climates?

Neil Baldwin, STRI: Green Pest and Disease Control

Derek Green, Course Manager, Royal Liverpool Golf Club: Dry Patch

Tor Senstadt, Secretary, Norwegian Greenkeepers Association: Greenkeeping in Norway

Patrick O'Brien, South Eastern Director, USGA Green Section: Bentgrass Management in the South Eastern USA

Jon Allbutt: Using Chemicals on the Golf Course and Complying with the Law

William R Roberts, President, Golf Course Superintendents Association of America: The Development of Education Programmes for the Greenkeeping Profession

Carol Borthwick, Senior Lecturer in Greenkeeping, Elmwood College: Where do we go from Here?

Laurence Pithie, Master Greenkeeper, Course Manager, Minchinhampton Golf Club: Golf Course Development - a Greenkeeper's Viewpoint

Barry Cooper: Golf Course Drainage Consultant: Golf Course Drainage - Before and After Construction

Jonathan Gaunt, Golf Course Architect: Project Management - How does it compare to normal Golf Course Construction Contracts?

Jim Arthur, Golf Course Agronomist: Sound Traditional Greenkeeping Practices versus Gimmicks

Gordon Jaaback, Agronomist, Conservation and Land Development Specialist: Limitations in Rootzone Design

Bernard Findlay, Course Manager, Portstewart Golf Club: Can you Build a Seaside Links or is that Nature's Job?

**The programme including application form will be available soon from BIGGA Headquarters Telephone 03473 581/2 • Fax 03473 8864**



provide ample power for all mowing conditions. Key improvements include faster transport speed and better engine access for serviceability along with increased fuel capacity and operating economy. An addition to the greenmaster range is the new lightweight GR3100 which features a patented hydraulic oil leak detection system. Other features are power steering and adjustable steering arm which combined with Toro's excellent quality of cut make the Greensmaster range the leader in greens mowing.

**TURFCARE .....Stand No. B7**  
98 Durham Road, Leadgate, Consett, Co. Durham DH8 7RB  
Tel: 0209-505837. Contact: Terry Charlton

Exhibiting for the first time Turfcare will be showing some products including the TOURNAMENT range of top dressings. These superb dressings feature the highly rated new Platt Wood sands and they will complement the TURFCARE TOURNAMENT range of fertilizers and grass seeds. The stand will also display the range of BOYD golf course accessories. The ergonomic ELETE hole cutter in conjunction with BOYD hole cups and the unique puller setter trimmer make the chore of changing the holes a pleasure. Ask for a demonstration on your own course. The staff of TURFCARE will be pleased to discuss vertidrainning Coremaster hollowtining with customers old and new.

**TURFMECH MACHINERY LTD .....Stand No. A51**  
Butts Farm, Great Haywood, Staffs ST18 0TF  
Tel: 0889-881611 Fax: 0889-882819. Contact: Clive Carter

Turfmech will be showing for the first time in the U.K. the new 1 metre Rotadairon Soil finisher and stone burier. This new addition to the stone burying machine range gives the 18 hp compact tractor operator the ultimate seedbed preparation tool. By burying stones, clods and surface debris, and placing the fine soil particles on the surface, the new RD130 leaves an unbelievably fine level seedbed in one pass. Turfmech staff will also be available to discuss other machines from their range of debris vacuums and blowers, high capacity fine finish tri-deck rotary mowers, and their unique fairway scarification service.

**UNIVERSAL MATERIALS.....Stand No. C21/23**  
5/7 High Street, Dorchester-on-Thames, Oxon OX9 8HH  
Tel: 0865-341580 Fax: 0865-341575. Contact: Geoff Russell

We are showing the original and only authentic AstroTurf golf mat which is ideal for use on both golf courses and ranges. The easy Picker Range Ball Harvesters and Washers have unquestionably proved their reliability and performance and remain outstanding value. Midgley Nicholls Ball Dispensers, manufactured in Britain by Heritage Fairway, are designed in modular form which allows customers to add on as demand grows for extra capacity. Fully programmable electronic coin mechanisms allow for flexible pricing with any denomination of coin or token. The Club Car Carryall vehicle is a general purpose, petrol driven utility vehicle available with a number of optional extras and is an ideal power source for the Easy Picker Range Ball Harvester.

**VITAX.....Stand No. A55**  
Owen Street, Coalville, Leicester LE6 2DE  
Tel: 0530-51-60 Fax: 0530-510299. Contact: Trevor Holmes

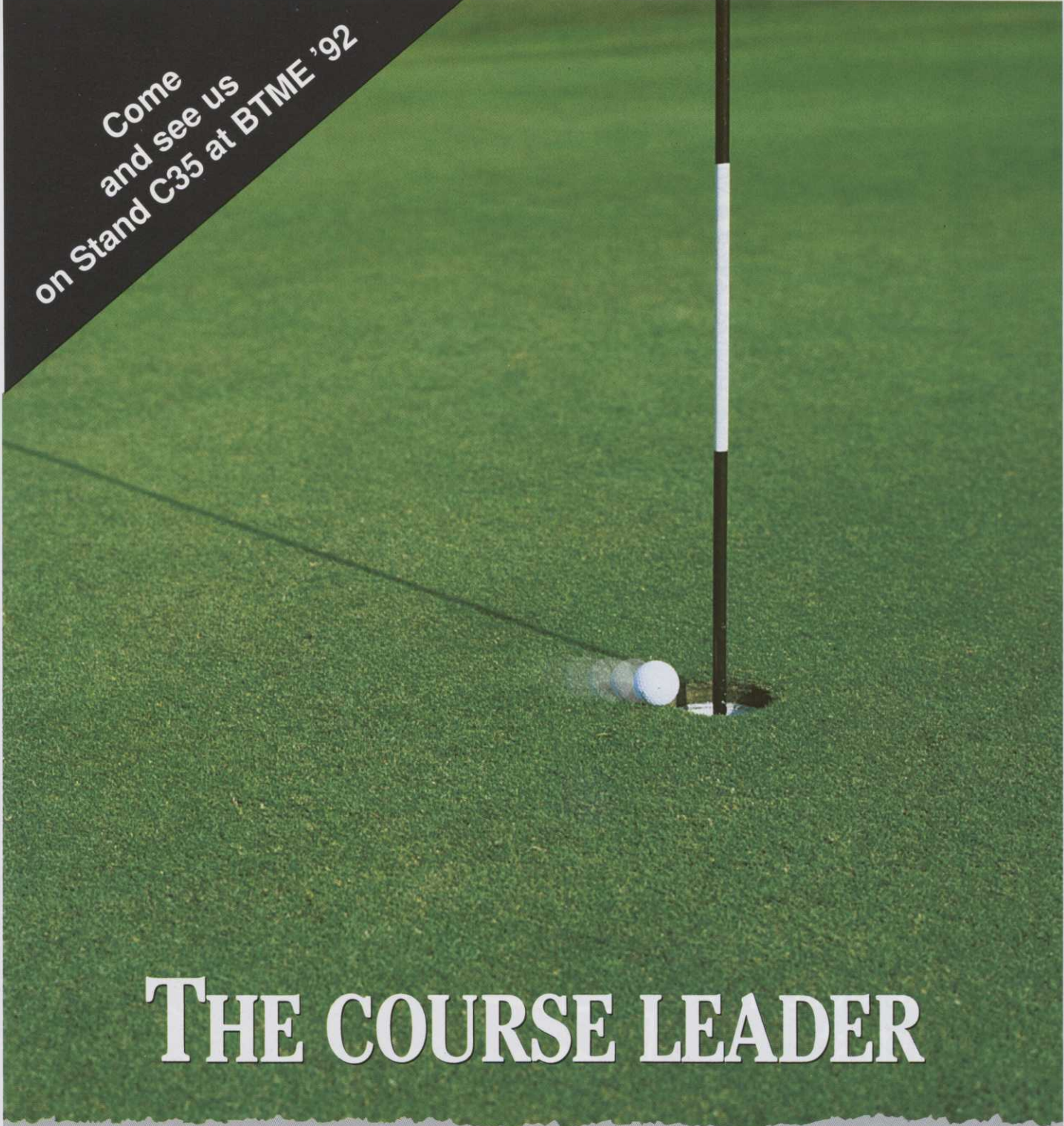
VITAX Gro-Cover has proved to be the ideal product for today's turf manager, whether it is used to cover newly seeded or oversown areas of sport and amenity grass, where it has been proved to increase the speed and percentage of germination by 4 to 7 days, or regenerate growth on golf course walkways or other areas of stressed existing grass. Two new sizes of Gro-Cover are now available. Featured alongside Gro-Cover will be Vitax Weedblock, a highly porous landscape mulch fabric, plus the full range of Vitax Sport Amenity Chemicals and Key Range fertilisers.

**WATERMATION.....Stand No. B59A**  
Tongham Road, Aldershot, Hants GU12 4AA  
Tel: 0252-336838 Fax: 0252-336808  
Contact: Eileen Hawthorn

Watermation - Remote Control Watering. Don't miss the opportunity to see the new Watermation Remote Control. This clever piece of equipment is a handset the size of an average portable telephone, capable of turning the TW2 controller on and off at any given location on the course. This gives greenkeepers the opportunity to observe and run the irrigation at any station and at any distance, without interfering with the pre-set programme - something wanted by greenkeepers for a long time. Two other new innovations for Watermation are the Aquater soil moisture meter. This gives an accurate reading of the irrigation penetration, and the Aqua-Master range of beautiful aerators and pumps to keep your lake both lovely and free of algae build up.

**WIEDENMANN (UK) LTD .....Stand No. A37**  
c/o Inturf Group, 11B Regent Street, Pocklington, York YO4 2KN  
Tel: 0759-304101 Fax: 0759-305229

Come  
and see us  
on Stand C35 at BTME '92



# THE COURSE LEADER

Lindum - the perfect turf for golf greens, tees, fairways and landscaping.

A range of the finest quality seeded turf; seed prescriptions and fertilisers matched to customers special needs; with a full preparation and after-care advisory service.

For golf courses, Lindum are the leaders, of course!



Church House, Horkstow, Barton on Humber, South Humberside, DN18 6BG. Telephone (065 261) 564 or 329. Fax (065 261) 447



# Enjoy the show!

The annual BIGGA Turf Management Exhibition is recognised as the premier exhibition for the fine turf industries and forms part of BIGGA's defined role to assist and encourage its members. Together with the Educational Seminar Programme, the January event forms part of an unbeatable package for greenkeepers and everyone associated with the industry. Other major events include

the National Education Conference, the National Tournament and a key role in the prestigious Open Championship. You can join the Association as a Greenkeeper member or as a Company or Associate member. See the postcard in this magazine for more details, or chat to BIGGA staff on Stand C27 at the BTME. Join BIGGA - and grow with us into 1992 and beyond.

## We lay <sup>the</sup> Big Rolls

For the best finish <sup>1</sup>  
and fastest  
establishment

A variety of turf grades available,  
laid more efficiently  
and economically  
in big 25 sq.yd. rolls.

See us on  
Stands A83/85  
at BTME '92



Please send me without obligation  
More information/demonstration .....  Please tick  
A quotation/site visit.....

GI.1.92

Name \_\_\_\_\_

Address \_\_\_\_\_  
\_\_\_\_\_  
\_\_\_\_\_

AD  
REF  
301

Lawn Technology Ltd., Turf House, 16 Invincible Road, Farnborough, Hants. GU14 7QU. Tel: 0252 370101. Fax: 0252 370241

**LAWN<sup>®</sup>**  
**TECH**  
THE PERFECT LAWN ON A ROLL



# THINK FERTILIZER, THINK **Longlife**

All 'Longlife' products are organic based mini-granular fertilizers. As a result the granules do not stay on the surface for weeks, but breakdown within a few days, so reducing the risk of scorch and mower pick up. They are all true compounds and **not** blended fertilizers, each granule containing the desired spread of nutrients so that speckling, which can occur with blends, is prevented.

All the Fine Turf and Sports Turf fertilizers contain seaweed extract to provide a source of trace elements. Six

of the products also contain the unique ingredient DIDIN. This reduces the growth flush and gives a controlled release of nitrogen, thus extending the grass feeding period from one application. DIDIN has the added benefit of reducing nitrate leaching.

The use of 'Longlife' fertilizers should be considered an integral part of any turf management programme, giving effective results at a very reasonable cost.

## FINE TURF RANGE



Product Name	Spring & Summer	Autumn Feed	Finegreen NK	Nitrogen with Iron
NPK Analysis	14:3:7	5:5:15	15:0:5	8:0:0
Other Ingredients	2% Mg, Seaweed extract	2% Mg, 1½% Fe, Seaweed extract	2% Mg, Seaweed extract	2½% Fe, Seaweed extract
Contains DIDIN	Yes	No	Yes	No
Mini-granule	Yes	Yes	Yes	Yes
Application Rate	35–50 g per sq m 1–1½ oz per sq yd	35 g per sq m 1 oz per sq yd	35–50 g per sq m 1–1½ oz per sq yd	35–50 g per sq m 1–1½ oz per sq yd
Area Treated	500–710 sq m 585–880 sq yd	710 sq m 880 sq yd	500–710 sq m 585–880 sq yd	500–710 sq m 585–880 sq yd
Bag Size	25 kg	25 kg	25 kg	25 kg

## SPORTS FIELD RANGE



Product Name	Spring & Summer	Autumn Feed	Nitrogen	Plus
NPK Analysis	11:6:9	10:10:15	25:0:0	14:3:7
Other Ingredients	1% Mg, Seaweed extract	Seaweed extract	1½% Mg, Seaweed extract	2% Mg, 2,4-D, dicamba, Seaweed extract
Contains DIDIN	Yes	Yes	Yes	Yes
Mini-granule	Yes	Yes	Yes	Yes
Application Rate	35–50 g per sq m 1–1½ oz per sq yd	35 g per sq m 1 oz per sq yd	35–50 g per sq m 1–1½ oz per sq yd	35 g per sq m 1 oz per sq yd
Area Treated	500–710 sq m 585–880 sq yd	710 sq m 880 sq yd	500–710 sq m 585–800 sq yd	710 sq m 880 sq yd
Bag Size	25 kg	25 kg	25 kg	25 kg

**Longlife**

**QUALITY TURF FERTILIZERS**



**Professional Products**

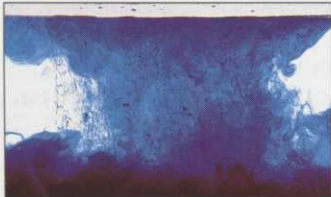
See us on Stand B61 at BTME '92

Fernhurst, Surrey GU273JE. Tel: (0428) 645454

'Longlife' Plus contains 2,4-D and dicamba. READ THE LABEL BEFORE YOU BUY: USE PESTICIDES SAFELY.

# The Professional's Choice!

## Turf Mark® Blue Spray Pattern Indicator In Water Soluble Packets.



*Simply drop the packets  
into the solution.  
Packets dissolve quickly  
and completely!*

Turf Mark® is the professional's way to apply liquid pesticides and fertilizers. Turf Mark shows you exactly where you've sprayed. The distinctive blue color helps to eliminate skips and overlaps, saving you time and money.

Now Turf Mark is available in convenient, water soluble packets. Turf Mark WSP is a dry flowable formulation of liquid Turf Mark. It is the most convenient and easy-to-use blue spray pattern indicator available. Turf Mark WSP dissolves quickly and completely in the spray tank, leaving no residue to clog screens or nozzles. With Turf Mark WSP, you virtually eliminate applicator contact, container disposal, mixing and handling problems. It is completely compatible with liquid pesticides and fertilizers. And, it cleans up easily from equipment.

For more information contact your distributor or call Becker-Underwood today, toll-free.



### Becker-Underwood, Inc.

801 Dayton Avenue • Ames, Iowa 50010 U.S.A.  
(515) 232-5907 • Toll-Free: 1-800-232-5907

*Other  
Becker-Underwood  
Products*

See us  
on Stand  
**B9/11**  
at BTME  
'92



**Lake Colorant WSP™**  
The quick, easy and  
economical way to  
color lakes and ponds.



**Mulch Magic®**  
Economically restores  
the fresh look and  
color to faded mulch.



**Green Lawnger®**  
Restores a healthy,  
natural look to dormant  
or discolored turf.