

by ROGER EVANS

The aim of the golf greenkeeper is to produce the best possible quality of turf with the resources available. In general, this means that the presence of broad-leaved weeds in any number is unacceptable not merely from an aesthetic point of view but also because weeds can actually influence play.

If weeds are beginning to become a problem, there may well be an underlying reason. The most common causes are over-acidity of the surface soil, poor drainage, or poor nutrition. Weeds can act as indicators of an underlying problem and without tackling the underlying cause then weeds will always be present. It is a wise policy to try to discover why weeds are present, particularly if they are a recurring problem, and to adjust turf management in conjunction with chemical control measures accordingly. For example, sheep's sorrel (*Rumex acetosella*) is associated with an over-acid surface soil, creeping buttercup (*Ranunculus repens*) is often found in damp, boggy corners and white clover (*Trifolium repens*) is often seen in areas that have not been fertilised for several seasons.

The greenkeeper must be familiar with the common broad-leaved weeds and if there any doubt about identification, then advice should be sought or a good flora purchased.

Hand weeding

Before reaching for the sprayer it is always worth considering hand weeding, particularly in small areas. Much effort and money can be saved by always carrying a knife to remove weeds during the course of the day. Even some grass weeds can be significantly discouraged by regular slashing, for example the spread of Yorkshire fog (*Holcus lanatus*) can be limited in this way.

Spot treatment

In general, spot treating individual weeds needs to be done carefully, as so often weed-killer is over-applied with the result that as well as the weed, surrounding turf is killed. A single nozzle, lance-type sprayer is not recommended for spot treating weeds in turf for this reason. However, provided care is taken, correct doses can be applied to small areas using, for example, aerosol spot weeders.

Wiping out

WEEDS

As is the case when hand weeding, spot treating weeds is really only practical over fairly small areas of putting surface or tee.

Spraying - choosing a herbicide

Once it has been decided there is a weed problem and the weeds have been identified, the next step is to choose the appropriate herbicide for selective control.

Commonly available selective herbicides are

based on the active ingredients MCPA, 2,4-D, dicamba, dichloroprop, fenoprop, mecoprop and ioxynil. Normally proprietary products contain one or more herbicides. The different combinations increase the number of weed species it is possible to control. The choice of product should be based on the susceptibility of the weed species to any of the available herbicides or a mixture of herbicides. Information is available and the table lists a selec- ➔ 43

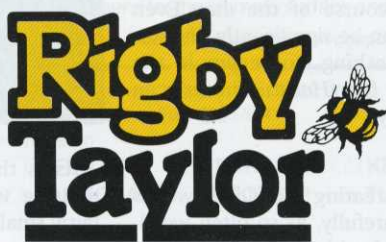


Is There a Growing Need for Advice on Fertilizers? Talk to Rigby Taylor!

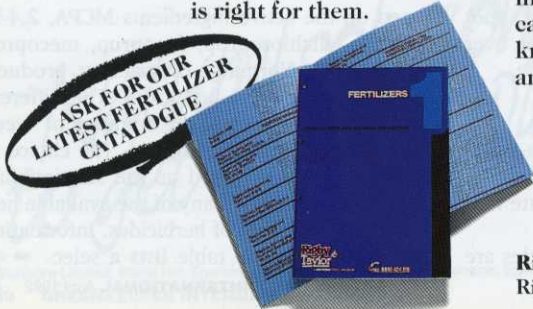
With the growing complexity of today's staggering array of fertilizers, all apparently with different formulations to perform perfectly whatever the growing conditions, even professionals sometimes hesitate to decide which one is right for them.

Rigby Taylor can help!

With over forty years in the business we have experience and specialised knowledge to share with you. Wherever there's a need for professional advice about grass seeds, fertilizers, pesticides, organics or indeed any advanced turf care products Rigby Taylor know how, know where and know when.



A **GROWING** FORCE IN LEISURE



To phone and talk to us costs nothing.

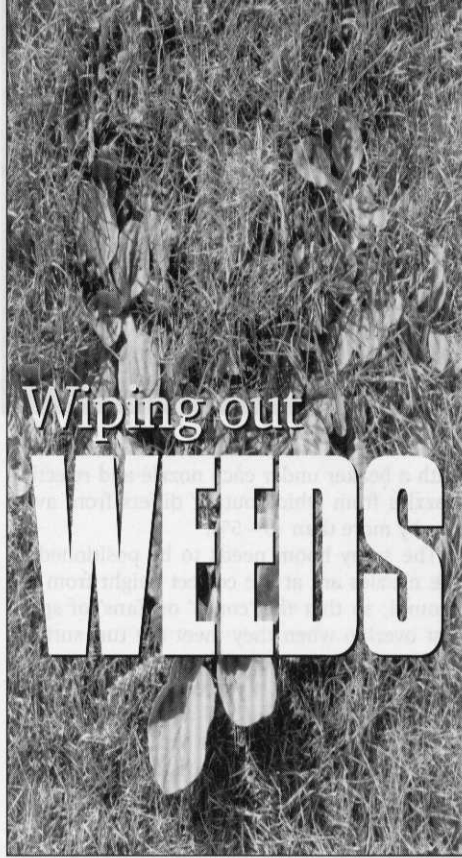
 **FREE 0800 424 919**

Rigby Taylor Limited
Rigby Taylor House, Garside Street, Bolton, Lancs BL1 4AE Tel: 0204 394888 Fax: 0204 385276

41 • tion of common weeds and their susceptibility as mature plants to various herbicides and mixtures.

Selective weedkillers

Selective weed-killers or herbicides will control most broad-leaved weeds of turf. They may contain one or more active ingredients. At least one of the active ingredients is normally a foliage-applied translocated herbicide with growth-regulating activity, such as MCPA, 2,4-D or mecoprop. These chemicals are taken into plants chiefly through leaves, but also through roots, and upset normal plant growth processes and distort growth within susceptible weed species. Effects can be seen in twisting of leaves and distorted growth within a day or two of application, but weeds may not die for four to eight weeks. Resistant species may take in less chemical (eg. because of angle and type of leaf, which partly accounts for selectivity between grasses and broad-leaved species) and also avoid the toxic effects in various ways. Some herbicides, eg. ioxynil, act primarily by contact, producing a rapid contact scorch and then yellowing of foliage on susceptible plants as photosynthesis and



other processes are affected.

Selective herbicides are sold as proprietary products containing variable amounts of active ingredient (a.i.). For some herbicides, the active ingredient is expressed as acid equivalent (a.e.). Although the two terms are not the same, they have a similar meaning for the layman, both being used to distinguish the active

ingredient from the 'carrier' or solvents in a proprietary product. The proportion of active ingredient varies between products. Thus, if two firms sell weed-killers with the same active ingredient, firm A may formulate its product with 20% a.i. while firm B formulates its product with 30% a.i. Manufacturer's label recommendations must be followed at all times.

Approved products

All pesticides, including herbicides, currently used must be approved by MAFF; this can be checked by ensuring the product label displays a MAFF number.

Choice of application equipment

Herbicide application by sprayer generally gives the best results for professional users. The spray droplets give good cover, reaching, at least partially, the undersides of leaves and lower parts of the plants, but spray drift may give risks to non-target plants, the operator and the general public.

There is a wide range of spraying equipment available. For comparatively small areas or for spot treatment (putting greens) a knapsack sprayer may be acceptable. For larger areas there are 'knapsacks on wheels' or other pedestrian equipment, e.g. Walkover sprayers, while for larger areas, e.g. fairways, tractor-mounted or tractor-drawn models are available. The volume of liquid applied by a sprayer depends partly on the machine itself (e.g. pump output), partly on nozzle size, and partly on speed of movement over the ground. The following are generally accepted definitions of the various volumes of application appropriate to conventional sprayers with nozzles:

- low volume - 55 - 225 litre ha⁻¹
- medium volume - 225 - 675 litre ha⁻¹
- high volume - 675 - 1125 litre ha⁻¹

Details of application volumes for herbicides may be found on product labels and must be strictly followed.

Controlled droplet application (CDA) sprayers based on a spinning disc principle work at very low (11-55 litre ha⁻¹) or ultra-low volumes (1-11 litre ha⁻¹)

There are several traditional application methods still in use, eg. wick applicators, fluted rollers, or a watering can with a rose or dribble bar). These methods are generally less efficient than spraying and the product label must be checked to ensure these methods are recommended. For areas containing low populations of weeds only, spot treatment may be appropriate. This is often difficult to achieve with any degree of accuracy in practice.

Checking spraying equipment

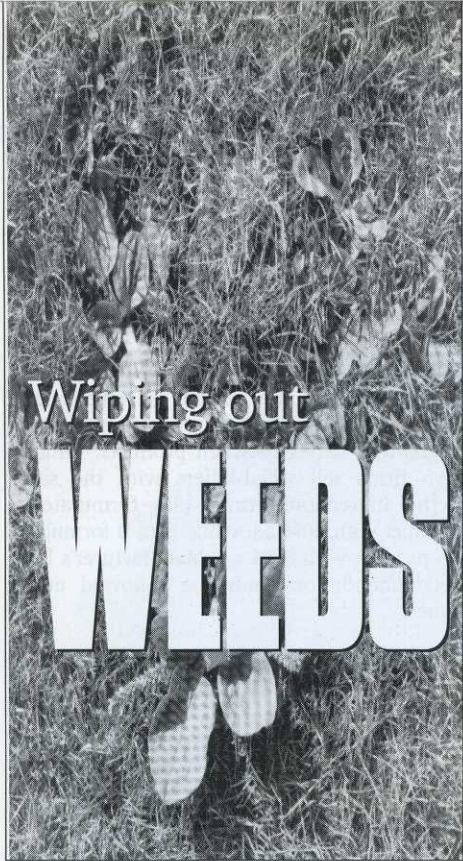
Prior to every spraying operation make sure that the application equipment is in good working order and that pressure hoses, joints and unions are watertight. Ensure that the jets and filter screens of spraying machines → 44

Broad-leaved weeds and their herbicide susceptibility as mature plants

Common Name	Botanical Name	MCPA	2,4-D	Mecoprop	Mecoprop/ 2,4-D	Ioxynil mecoprop
Creeping buttercup	<i>Ranunculus repens</i>	S	S	MR	S	MS
Bulbous buttercup	<i>Ranunculus bulbosus</i>	MS	MS	MR	MS	MR
Mouse-ear chickweed	<i>Cerastium holosteoides</i>	MS	MR	S	S	S
Common chickweed	<i>Stellaria media</i>	MS	MS	S	S	S
Pearlwort	<i>Sagina Procumbens</i>	MR	MR	S	S	S
Blinks	<i>Montia fontana</i>	-	-	-	MR	-
Black medick	<i>Medicago lupulina</i>	R	R	MS	MS	MS
Suckling clover	<i>Trifolium dubium</i>	R	R	MR	MR-MS	MS
White clover	<i>Trifolium repens</i>	MR	R	MS	MS	S
Cinquefoil	<i>Potentilla reptans</i>	MR-MS	MR-MS	MR-MS	MR-MS	MS
Parsley Piert	<i>Aphanes arvensis</i>	R	R	MR-MS	MR-MS	MS
Sheep's sorrel	<i>Rumex acetosella</i>	MS	MS	R	MS	MS
Common sorrel	<i>Rumex acetosa</i>	MS	MS	R	MS	MS
Curled dock	<i>Rumex crispus</i>	MS	MS	MR	MS	-
Slender speedwell	<i>Veronica filiformis</i>	R	R	MR	MR	MS
Self-heal	<i>Prunella vulgaris</i>	MR	MR	MS	MS	MS
Broad-leaved plantain	<i>Plantago major</i>	S	S	S	S	S
Ribwort plantain	<i>Plantago lanceolata</i>	S	S	S	S	S
Common ragwort	<i>Senecio jacobaea</i>	MS	MS	-	MS	-
Daisy	<i>Bellis perennis</i>	MR	MS	MR	MS	MR
Yarrow	<i>Achillea millefolium</i>	MR	MR	MR-MS	MR-MS	MS
Cat's ear	<i>Hypochaeris radicata</i>	MS	MS	MS	MS	MS
Mouse-ear hawkweed	<i>Hieracium pilosella</i>	S	S	S	S	MS
Dandelion	<i>Taraxacum officinale</i>	MS	MS	MR	MS	MR
Toadrush	<i>Juncus bufonius</i>	R	R	MR	MS	MS
Field woodrush	<i>Luzula campestris</i>	R	R	MR	MR	MR

Note: Herbicides used at full recommended rates according to manufacturers' instructions.

- Key: S = Susceptible, one application kills
 MS = Moderately susceptible, one application usually kills, sometimes a second needed
 MR = Moderately resistant, two to three applications needed
 R = No useful effect
 - = No information.



White Clover



Speedwell

41 → are free from blockages and are suitable for the job in hand. The nozzles fitted should be of the type and size specified by the equipment manufacturer or, for particular jobs, those recommended by the chemical manufacturer as described on the label.

Make sure nozzles are clean and giving their proper spray pattern. As part of the calibration process check their uniformity of output, by operating a stationary water-filled sprayer

with a beaker under each nozzle and rejecting nozzles from which output differs from average by more than $\pm 5\%$.

The spray boom needs to be positioned so the nozzles are at the correct height from the ground, so that the 'cones' or 'fans' of spray just overlap when they meet the turf surface. To keep this correct height consistently, make sure that on a 3 or 4 wheel sprayer the boom is level and securely fixed at the right height, and that a 2 wheel sprayer can always reliably be held at the correct distance from the ground (eg. using a chain of just the right length hanging from the boom). The nozzles of hand-held booms on knapsack sprayers or the working height of controlled droplet applicators are even more difficult to keep a consistent height above target level during operation, but unless this is done, calibration will be meaningless and the application rate quite different from what is intended.

Cleanliness of spray machines is of paramount importance, especially where one machine is used for many different products. If equipment is shared with other users, it is advisable to wash it out thoroughly both after

spraying is complete and also before the next use. Ideally, a separate sprayer should be kept for total herbicides or other similar chemicals, to avoid problems of contamination which damage turf.

Calibration of equipment

The first essential of accurate treatment is to know what volume per unit area you will actually be applying when you start work: otherwise you cannot possibly work out the correct rates of chemical. Establishing this volume per unit area is calibration. Calibration is not a magical process, but it is all important. It must be done afresh every time you spray and must also be done every time equipment is altered or changed, or a change in herbicide product is made.

The volume of liquid applied by a sprayer depends on nozzle size, pressure and travelling speed.

Always wear suitable protective clothing when mixing chemicals. (Refer to product label for details.) Follow any specific instructions given on the label but, as a general rule, add half the required quantity of water, then the chemical, then the remainder of the water (which can be used to rinse out the container in which the chemical was measured). Powder formulations can usually be added to the water and stirred to give a suspension or solution, but it may be necessary to pre-mix the powder by adding a small amount of water to it and mixing thoroughly, to the consistency of a thin cream. This 'cream' can then be added to half the quantity of water in the spray tank and topped up in the normal way.

Patterns of spraying

Accurate marking of strips is essential to minimise misses or overlaps. If chemicals do not contain a dye, or sprayer wheelings cannot be followed, lines and/or marker pegs should be used or a marker dye added to the spray, particularly on important areas such as golf greens.


For such areas, it is also advisable to spray twice over with a half-strength tank mix, the second time at right angles to the first. This makes misses or overlaps less serious. All spray work using a boom should be done in parallel lines, not curves (to avoid different speeds at the two ends of the boom). Even with single-nozzle equipment, parallel working is more methodical.

Special points on applying growth regulator herbicides against broad leaved weeds

Timing
Apply any time from spring to early autumn, preferably in fine, warm weather when the soil is moist and growth is vigorous. Late spring is generally considered best. Avoid applying herbicide treatments during hot, dry weather, or in late autumn (when weed control may be good but the turf may not fill in adequately before winter). Heavy rain shortly after application may reduce effectiveness. Wind gives risk of drift, but a slight constant breeze may allow better work than light variable winds. Growth-regulator herbicides act best when both weeds and grass are growing vigorously. Therefore, if the turf normally receives nitrogenous fertiliser, give some a week or two before spraying. Fertiliser/herbicide mixtures are convenient and avoid risks of spray drift, but they do not boost growth in readiness for herbicide treatment like a separate fertiliser dressing, and a granular herbicide may be washed off by rain more easily than a spray, especially a rain-fast one.

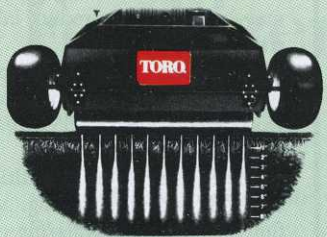
Mowing before and after spraying

Turf mown infrequently (every seven to ten days, or more).



Town & Country
SPECIALIST CONTRACTORS IN
TURF MAINTENANCE

“What’s going
on down there?”



HydroJect™ 3000

Compaction on Greens and Tees etc “in need of aeration”?

Get the new HydroJect working for you all year round!
Also our Vermeer TS 44 Tree Spade is for hire – transplanting trees on site economically.

Call on Town & Country

For a competitive hire rate, and professional service within the UK and all European countries.

Unit 4, Brainwood Farm, Cooksmill Green, Roxwell, Essex CM1 3SJ
Tel: (0245) 248402 • Mobile: 0831 634644 • Fax: (0245) 248449



Plantain



Yellow suckling clover



Mouse ear chickweed

A large leaf area of weeds allows maximum herbicide absorption: therefore delay spraying until a few days before a cut. But then make sure not to cut for two to three days, to give time for herbicide absorption before weed leaves are removed by mowing.

Frequently mown turf

Weed growth between cuts will not matter. Some people would advise not to spray freshly cut grass, but many greenkeepers mow fine turf and spray the same day with no apparent damage. Also, there is no need to refrain from mowing to allow herbicide uptake if all weed foliage is below mowing height.

Disposal of clippings

After use of growth-regulator herbicides, the clippings from the first four mowings must not be used directly as a mulch round broad-leaved plants or shrubs but may be incorporated into compost heaps, provided that they remain there for at least six months before the compost is used for broad-leaved plants or shrubs.

After the first four mowings no special precautions are needed.

Grass weeds

The three most common grass weeds found in fine turf are annual meadow-grass (*Poa annua*), Yorkshire fog (*Holcus lanatus*) and perennial ryegrass (*Lolium perenne*). There are no suitable chemicals available for their control in fine turf and the best way to avoid them is by employing suitable management practices. Removal of grass weeds is possible on a small scale by, for example, hand weeding, plugging or re-turfing.

Certain resistant broad-leaved weeds may require more than one application of herbicide for effective control. Consult the product label for instructions on repeat treatments.

Precautions

Growth-regulators are very powerful and can affect non-target plants even in minute doses. Risks are very real where crops and plants other than grass and cereals are grown in the vicinity of spraying. Do not treat areas of turf near valued plants in flower beds, etc. except on a calm day. If contamination of such plants is suspected, wash them down copiously with clean water. Clean out spraying

equipment thoroughly after use.

All herbicides are potentially harmful to the user; follow safety instructions on the product label carefully. Always be careful when measuring out and mixing concentrated herbicides, avoid inhaling the spray, and store and dispose of containers carefully. Always wear minimum protective clothing, i.e. gloves, protective clothing and face mask. Above all, read everything on the label before opening the container. It should be understood that herbicide users are under an obligation to comply with legal requirements governing the usage of such materials and that the instructions included with each product are mandatory, including instructions regarding application rates. Users should be familiar with the FEPA (1985)m Part 3: Control of Pesticides Regulations (1986).

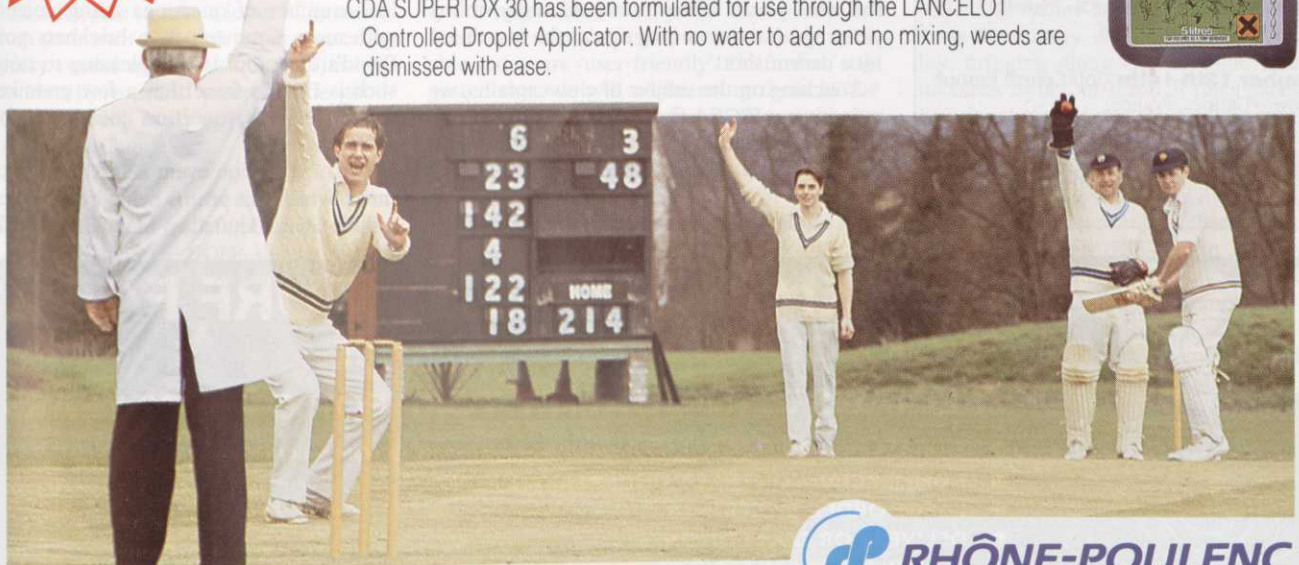
•The author, Roger Evans, is an advisory agronomist with the Sports Turf Research Institute.

Supertox 30 dismisses over 22 different turf weeds

SUPERTOX 30 is the U.K.'s number one selective turf herbicide with an established reputation for reliable broad-spectrum weed control.

SUPERTOX 30 may be used on all established turf types, and a flexible dosage allows you to choose the most effective rate for your weed problem. It's available in a 5 litre Tip 'n Pour container or a 25 litre drum.

CDA SUPERTOX 30 has been formulated for use through the LANCELOT Controlled Droplet Applicator. With no water to add and no mixing, weeds are dismissed with ease.



Rhône-Poulenc Environmental Products, Regent House, Hubert Road, Brentwood, Essex CM14 4TZ Tel: 0277 261414 Fax: 0277 264072

SUPERTOX 30 & CDA SUPERTOX 30 CONTAIN 2, 4-D AND MECOPROP. READ THE LABEL BEFORE YOU BUY : USE PESTICIDES SAFELY.

AD
REF
59



AROUND THE GREEN

Keeping in touch with news and comment from the regions

COMING UP

April 8th: BIGGA Annual General Meeting, Royal York Hotel (immediately adjacent to York Railway Station), York. Commencing at 2.30pm.

April 29th: BIGGA South West and Wales Region Trade Show WESTURF '92 - Long Ashton GC, Bristol.

June 3rd-4th: Landscape Industries '92. Trade Show - National Agricultural Centre, Stoneleigh, Warwickshire.

July 16th-19th: The Open Championship - Muirfield, Scotland.

August 10th-12th: BIGGA National Golf Tournament - Littlestone GC, Kent.

September 8th-10th: IOG Trade Exhibition - Peterborough, Northants.

September 24th: ISEKI Championships Final - Coventry GC, Warwickshire.

October 12th: TORO/PGA European Tour Student Greenkeeper of the Year Award - Aldwark Manor, York.

October 14th-15th: Kubota Challenge - The Belfry, Sutton Coldfield, Warwickshire

October 26th-November 27th: BIGGA Management Courses (five weeks) - Aldwark Manor, York.

November 11th-12th - IOG Scotsturf Trade Exhibition, Edinburgh.

November 12th-14th: Golf Course Europe '92 Show - Cannes, France.

December 7th: ICI Professional Products Premier Greenkeeper Award: Finals - Aldwark Manor, York.

KENT

Our Spring Tournament at Darenth Valley on the 6th May will soon be upon us. Hopefully spring will also bring some welcome encouragement for some very tired looking turf. Mild winters may be good for maintaining a golf course's income, but they leave behind some very thin and worn turf. Looking ahead, we don't have a Summer Tournament arranged for this year as we are hosting the BIGGA National Tournament at Littlestone. No doubt more detailed information will appear nearer the time, but I can give you some outline of the format in the hope that we in the Kent section can support this very important event.

The Tournament itself will take place on the 10th, 11th, and 12th of August, but a practice round will be available on Sunday the 9th August between 2.30 pm and 5.30 pm, with the registration for the main event taking place during the Sunday evening. As for the social side, we hope to have an informal barbecue in a marquee adjacent to the club house on Monday evening, with the banquet the following evening.

Much of the thanks for the organisation of the event must go to those at Littlestone Golf Club. Malcolm Grand always has this gem of a links course in tip-top order and a special thanks to Littlestone's 1991 Club captain, Brian Evans. It is great that Brian can lend his enthusiasm and organisational abilities to the event, for as some of you may know he is also secretary of the Kent Golf Union and EGU golf development officer for the South East. Perhaps he would rather I forget him as one of the Kent youth selectors many, many, many years ago - about as long ago as the last time I hit a decent shot!

Touching on the subject of club captains, we may have a BIGGA first in that our chairman, Chris Marden, is the captain at West Malling Golf Club this year. He brought his own special slant to the drive-in proceedings at the start of the year by arriving on the tee, in front

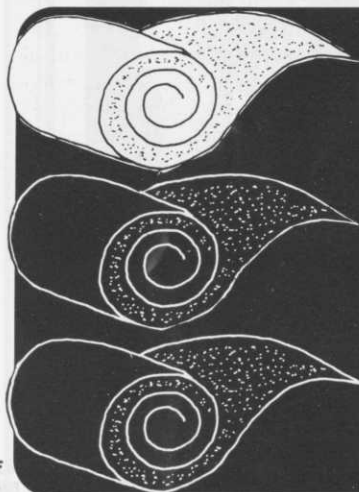
of the assembled galleries, dressed in overalls, boots, cloth cap and donkey jacket. In one hand he clutching his trusty driver and in the other a large bucket of soil and seed, with which he diligently began to divot the first tee. To the horror of the ladies present, he then began to strip off - thankfully to reveal more correct golfing attire. He then drew a ball from his pocket (apparently preferring to supply his own as those supplied in the past by supposed friends of the new captain had a habit of exploding!), tee'd it up and struck a remarkably straight shot some 164 yards. That is a good 164 yards further than I have seen some new captains attempt to drive, but I can't help but wonder that it was a relief he hadn't previously divoted another tee, as this may have only resulted in a drive of some 82 yards! Perhaps the policy of appointing the head greenkeeper to the position of Club captain should become more common practice at all Clubs, for it would surely result in an improvement in the general condition of the course, after exercising the "first decree" - the banning and dissolution of the green committee!

PAUL COPSEY

SOUTH COAST

Members unable to attend the February lecture missed a very entertaining and interesting talk from our editor David White, who spoke of his annual visit to Augusta for the Masters Tournament and showed a number of slides covering the organisation and running of this prestigious event. This was followed by a talk on the Association's magazine, which resulted in a number of questions being voiced and with more bouquets than brickbats going in David's direction. It was pleasing to note that such is David's fame that a few greenkeepers from the Surrey section joined us for the evening.

The next section event is the Spring Tournament, which this year is being held at the Weymouth GC on Thursday, May 28th. The format



CUCKMERE VALLEY TURF FARMS

TRUCK MOUNTED FORK LIFT SERVICE

SPECIALISTS IN QUALITY TURF FOR OVER 20 YEARS

- WIDE SELECTION OF GRADES AVAILABLE FROM ECONOMY TO GOLF GREENS TURF
- COMMERCIAL CONTRACT UNDERTAKEN
- LARGE ORDER DISCOUNTS
- DELIVERY OR COLLECTION
- RELIABLE PROMPT SERVICE
- ASK OUR KNOWLEDGEABLE STAFF FOR ADVICE

ALFRISTON (0323) 870773

COMMON LANE, BERWICK, POLEGATE, E. SUSSEX. **FAX: (0323) 870285**

for the competition is a 36 hole medal, though members not wishing to play two rounds can play a single round. A number of trophies are available to various playing categories and the entry fee, which includes all meals, is £11.00.

Further details and all applications to play should be directed to our tournament organiser, Mr Joe Burdett, 23 Jacobs Ladder, Child Okeford, Blandford Forum, Dorset, DT11 8EA. Tel: 0258 861482. Other section tournaments for 1992 are: Summer Tournament, Basingstoke GC, Thursday 6th August, Autumn Tournament, Bulberry Woods GC, Monday 5th October.

Finally, please make every effort to attend Westurf at Long Ashton, Bristol on April 29th. This has become a major regional event for green staff and exhibitors alike and is well worth a visit.

BOB DENNIS

SHEFFIELD

As the first lady secretary, I am slowly finding my feet, though the responsibility is far greater than I expected. My Phase III training at Ashham Bryan College is proving invaluable, for BIGGA has grown in size and stature, which in turn leads to more administration. I have drawn up an agreement with my husband: if he puts central heating in the spare bedroom and converts it into an office, he can relax in his lounge without the sound of the typewriter clicking every night. "Agreed!"

I attended my first Regional Board Meeting at Cleckheaton Golf Club on the 12th February, where some very valid points were raised, all of which, I must stress, were in the interest of members and the success of the Association. I must congratulate the regional administrator, Howard McAddy, on the professional way in which he arranges and administers regional affairs.

DRESS RULES.

The executive director, Neil Thomas, has requested the section secretary to ensure at all times that the dress rule is observed. More important, when visiting a golf Club on a section event or for a 'courtesy' round, all members must observe the host Club rules and standards. In addition, please also note that it would be advisable to take a letter of introduction from your own golf Club when requesting a courtesy round at another Club. This will help to identify you and maintain the goodwill that has been built up between greenkeeper and golf Club.

WINTER LECTURES:

The winter lecture at Rotherham GC on April 2nd is scheduled for 2.00pm., and will be a talk on the RULES OF GOLF, delivered by a member of the R&A Rules Committee.

COMPETITIONS:

SPRING TOURNAMENT: 11th May Wheatley GC, tee off 2.00pm., ANNUAL TOURNAMENT: 6th July. Buxton High Peak GC 27 hole competition, tee off (morning) 10.30 am (afternoon) 1.30pm. AUTUMN TOURNAMENT: 7th Sept., Sitwell GC, tee off 1.30pm. Please contact the competition secretary, Barry Heaney, if you require any information. Tel: 0742 884063.

Barry is to be admitted to hospital for surgery and the section send their best wishes to him and his family. Get well soon Barry, we need you.

If any further information is required or I can help in any way, please do not hesitate to 'phone me on 0298 813374; or write to

AROUND THE GREEN



Stoneyford, Chapel-En-Le-Frith, Stockport, Cheshire. SK12 6QU.

JANE RYAN

DEVON & CORNWALL

As we arrived at Bigbury GC for our February meeting we found the course under a blanket of fog, which locals said would last all day. Nevertheless, 28 golfing members decided to brave the conditions and play for the Avoncrop Amenities Trophy. To their surprise the fog cleared as the first players reached the tee, though delight soon turned into despair as the heavens opened, with many running for cover to the club house and only a few brave souls managed to complete eleven holes before calling it a day.

During this time our non-golfers were being shown Rhone Poulenc's computer software, which was presented by Shaun Price and Paul Clifton. Many thanks gentleman. To present the Avoncrop Amenities Trophy (and prizes to the brave) was John Palfrey of Avoncrop Amenities, these going to: 1st C.Rawlings-18 pts 2nd B.Lewer-15 pts 3rd B. Ridgeway-14 pts. Many thanks to John for donating & presenting the prizes to our lucky winners and also our thanks to Graham Davis & his staff, who kept the course playable in such appalling weather.

After an excellent lunch we continued on the theme of computers with course manager Kerran Daly, from Salisbury & South Wilts G.C, presenting his paper on "Computers and Greenkeeping". Kerran must have thought he was back on the coach from Harrogate when water started to drip onto his overhead projector, but to his credit he waded on in fine style and brought home the point that we do not need to be afraid of computers, as those available today are 'user friendly'. He further suggested that we will all be using them in the work place in the near future. Many thanks, Kerran, for a splendid talk and also to Bigbury Golf Club, for allowed nearly sixty members to use their excellent facilities.

Members please note that WESTURF is now only a few days away. You should all have received your free invitation to the show which will be held at Long Ashton GC on Wednesday 29th April. If you haven't received an invitation, please contact me at once.

RICHARD WHYMAN

MID ANGLIA

Well, once again the Harrogate exhibition has come and gone, and it was pleasing to see so many members of our section in attendance at the workshops, seminars and trade exhibition. Let us look forward to next year, and to it being equally enjoyable.

Congratulations to our chairman, John Wells, who will shortly be starting his new appointment as course manager at Brockett Hall. Welwyn Garden City Golf Club must be very sad to lose John, who has, I believe, spent

15 years there. All section members wish you every success in the future, John.

An interesting afternoon was spent at Oaklands College on Feb 19th., when the lecturing staff gave us information regarding existing City & Guilds examinations and future plans for a full time one year course - the National Certificate in Greenkeeping and Sports Turf Management. This was followed by a tour of the campus looking at machinery and facilities, as well as an inspection of the site for a proposed 3 hole golf course, one upon which students will work in the future. Many thanks to the college and lecturing team for making us welcome.

Finally, please ensure that entries for the Spring Tournament at Verulam Golf Club on April 21st are with Chris Brook by April 14th at the latest, so that numbers, meals etc., can be confirmed. Should you either have not received or are having any difficulty with the entry forms, please contact any of the committee members listed below for help. Chris Brook, (fixtures secretary), 0438 813346. Gerald Bruce, (secretary), 0442 876765. Paul Lockett, (vice chairman), 0525 402550.

PAUL LOCKETT

SOUTH WEST

Yeovil Golf Club, in deepest, darkest Somerset, was the venue for the second meeting of the '92 season. This friendly Club, recently expanded to 27 holes under the expert eye of John Lawton, made the section very welcome, which was reflected in the very good turn-out despite the greater than usual travelling distances. The day was rather windy, to say the least, though this didn't prove a problem to Jon Leigh of Henbury, who recorded the days' best score of 37 points, to secure his first win after many attempts in section meetings.

The full result was as follows: 1st: J Leigh, Henbury, 37 points. 2nd: P Godwin, Tracy Park, 32 points, 3rd: K Millar, Tall Pines, 31 points. 4th: P Thorn, Tracy Park, 30 points.

Many thanks to Yeovil Golf Club for having us, to John and his staff for preparing the course, to the steward for the lunchtime meal; and to Huxley Grass Machinery, Avoncrop Amenity, Rigby Taylor, Richardson Plant, I.C.I., and Roffey Brothers for prizes. Huxley Grass Machinery were our sponsors for the day, bringing along two of their very latest machines to be put through their paces under the critical eyes of our resident experts. Thank you all.

Hot on the heels of Martin Townsend in the parenthood stakes is Dave Everett of Lyme Regis. I am happy to report that he has a son, Scott James, safely delivered in January. Congratulations David, we'll allow you two extra shots on your handicap to compensate for all those sleepless nights, and don't worry about all those teething problems encountered in the first three or four decades of your son's life, by the time that's past, you'll be too old to care!

On a more sobering note, we wish the recently retired section chairman, Bob Gates, a speedy recovery from his recent bout of bronchitis, and also best wishes to Ivor Scoones' wife Anne, for a complete recovery from her recent injury.

With this being a final reminder for WESTURF, April 29th, Long Ashton, let's have no excuses. Bring the staff, bring the green committee, let's have a successful, well attended show.

PAUL WORSTER

EAST MIDLANDS

First, many thanks to Rigby Taylor for the hospitality extended to section members at their seminar at Derbyshire C.C.C. on February 26th. Any chance of another one at Leicester in the autumn? Thanks also to Mr Gusterson and his staff at Brooksby College for a very pleasant and informative social evening on February 18th.

It's still not too late to enter the Spring Tournament at Wollaton Park GC on April 28th: you may ring me for an entry form if you haven't had one already. This competition will again be a qualifier for the ISEKI Tournament in September. There seems to have been a spate of injuries to section members over the past few months, so would prospective ISEKI team competitors, especially Roger Willars and Steve Goode, please take extra care, at least until the 28th, or we will end up fielding a team of reserves!

The section is once again pleased to welcome the following new members: Andrew McGreal of Lingdale GC, David Johnson of Ruddington Grange GC, Edward Mitchell of Springwater GC; and Philip Jennings of Rushcliffe GC. In addition, we welcome back Philip Reffin, also of Rushcliffe GC; and Anthony Burgoine, now at the new Uppingham Castle GC.

Finally, I am in the process of preparing a section name, address and telephone number listing for circulation to all East Midlands members, which should come in useful for arranging matches etc. If, because of past indiscretions, an anti-social desire for privacy; or for any other reason, you do NOT want to have your details circulated, please give me a ring on 0509 650140.

TONY HOWARTH

AYRSHIRE

The Ayrshire section Spring Outing will be held at Irvine Ravenspark on April 30th, commencing with coffee and biscuits on arrival and tee-off at around 9am. Please ensure that your entry forms are returned promptly in order that meals and tee times may be booked. An added incentive this year will be that qualifiers for the ISEKI Tournament will have the shortest of trips to Troon Darley for the regional finals. Let's see if we can find a team to go 'all the way' this time. The Autumn Outing will be held at Millport in September, and I will let you have full details later.

Congratulations and good luck go to Billy Fletcher on his promotion from first assistant to head greenkeeper on the Troon Municipal courses.

Finally, how about the Ayrshire greenkeeper who takes his job so seriously that he not only spikes fairways, tees, greens, etc., but also gives the vehicles in the car park a run as well! He was last seen with a Volvo, a Jaguar, and two Ladas, bouncing along behind his tractor.

DUNCAN GRAY

NORTH WEST

This year of 1992 looks again like being a busy year for golf fixtures, at the rate of at least one per month, quite apart from the National Tournament at Littlestone and an extra for those lucky enough to reach the ISEKI final at Coventry in September. The Spring Tournament is at West Derby GC, Yew Tree Lane, West Derby, Liverpool, on Tuesday May 12th. The tournament will take the form of an 18 hole medal round, with the tee available from

AROUND THE GREEN



1.30pm and at a cost of just £12 per player. Soup and sandwiches will be available on arrival, with dinner and prize presentation in the evening. Proper dress is essential and you must also bring your membership card with you. All enquiries to Paul Pearse, 1 Swan Close, Poynton, Stockport SK12 1HX. Tel: 0625 859258.

Members should note that the West Derby event is a qualifier for the ISEKI Tournament and is likely to prove somewhat competitive. Members will enjoy jockeying for vital places at the regional finals at Cleckheaton GC on June 25th., so come along, enjoy the day, and have a crack at qualifying.

Finally, if anyone is retiring, changing jobs, becoming a father or involved in something worthy of exposure, PLEASE let me know, as section news is hard to find without your help. Just ring 051 724 5412 and ask for Bert.

BERT CROSS

LONDON

The London section held its own seminar at Aldenham GC on February 26th, with some 50 greenkeepers representing eighteen Clubs in attendance, along with a several trade members. A warm welcome was extended to us by the staff at Aldenham and our sincere thanks to Mr Phillips for once again playing host to us for this important fixture in our calendar. Three companies supplied advertising display stands and our thanks go to Dennis Smith (Parkers), Peter Hopkinson (Browns), and Liam Galway (CMW), for continued support.

The speakers were of high quality and were received very well by their audience, for which thanks are due to Mark Hunt (Sierra Chemicals UK), Jim McKenzie (Wentworth GC), Peter Jefford (Rufford Top Dress Supplies), Kevin Munt (Buckinghamshire GC), and Jessie Johnson (EuroTurfCare), for their paper presentations. To mark our appreciation, the speakers were each presented with a gold-plated pen in recognition of their contribution.

To end this report on a sour note, one thing that did NOT go unnoticed was the number of greenkeepers who arrived wearing jeans, sweat shirts, training shoes and, would you believe it, tracksuit bottoms! This surely cannot go on any longer. If golf Club members are expected to dress correctly at their own Club, surely we owe it to them (and to ourselves) to do likewise. It is pure luck that these individuals have not been refused entry into hospitable Clubs such as Aldenham, and it surely only a matter of time before such a refusal will face the culprits. Worse still, as a section we may not be extended the courtesy of many Clubs, simply because of the few without pride, who cannot dress themselves properly. If individuals cannot take responsibility for their dress at such events, then their head greenkeepers must take it upon themselves, if only to safeguard our interests. So come on, all you head men: if you are sending staff to represent your

Club at any future section event – golfing or non golfing – get them in order, or don't send them at all!

ANDREW PHILLIPS

MIDLANDS

There couldn't have been a more successful start to the year than that which the BTME gave to us. Many members have mentioned how much they enjoyed the show and of the many good seminars available. Many thanks to all the staff at headquarters, who worked so hard in producing a show of this standing.

Our Summer Tournament this year will be held at Handsworth GC on Thursday June 18th. Please note that entry forms must be sent to Mike Hughes by May 13th; and that the maximum handicap for this event is 24. Please also remember that any news from within the section would be most welcome, so please call me – any time.

DEAN CLEAVER

SURREY

The recent debate held at Merrist Wood College was a huge success, with over 50 members in attendance. A panel consisting of Jack McMillan and David Whitaker, with Bill Hargreaves of Sisis in the chair, examined aeration techniques and equipment past and present. Two main conclusions seemed to be reached, one being that with the availability of a wide range of methods of aeration, it is imperative that the correct ones are applied to an individual site. Second, that it is up to greenkeepers to educate players and Club members of the necessity for on-going aeration programmes and ensure careful planning in order to give prior warning of interruption to play. Thanks went to the panel, to Merrist Wood College for the use of their excellent facilities, to David Luxford for his organisation, and to Sisis for sponsoring the event.

Our Spring Tournament takes place at Foxhills GC on April 23rd, entrants being reminded that they will be required to produce an Association membership card before playing, and that the 'one prize per player' rule applies. A presentation will also be made at Foxhills, this by Huxley's to the holders and three times winners of the Huxley Bowl, Alex Armitage and Paul Weston.

Finally a plea for section news, which should be conveyed to either Dave Andrews or myself. In a section as large as ours, something must be going on that is worth reporting – so let me know!

ROGER TYDEMAN

EAST ANGLIA

Our first winter lecture for some time was most successful, with over 60 turning out at Purdis Heath at very short notice. Michael Peters did very well at his first attempt at public speaking, addressing us on the subject of irrigation systems and techniques.

Colin Pryce, whose company, Soilcare Ltd., both sponsored the event and provided the welcome refreshments, spoke at length on deep soil aeration, followed by Patrick Lucas from Connecticut, USA, who gave a very interesting talk on deep 'aerification' and most aspects of American greenkeeping, most noticeably on how sand greens are not all they are cracked up to be! All in all a very worthwhile evening and well done to all concerned and thanks to Purdis Heath GC for the use of facilities.

There is a diary change, with our game at Eaton GC now fixed for SEPTEMBER 23rd - not October 7th. I must thank Aldeburgh for their kind hospitality way back in December when we held the Turkey Trot. Unfortunately, I missed the publication deadline (again-I hear you cry!), sorry, lads.

Man on the move Paul Bertinshaw bids a fond farewell to Royal Norwich after eight years, moving to Delamere Forest in Cheshire. AGM's will never be the same! We all wish Paul and his family the very best for a successful future.

Now for the be-all-and-end-all of why farmers don't make good greenkeepers. One of the many fields with 18 flagsticks that have been described as 'golf courses' has an active farmer owner. He has a good head greenkeeper (for now) but over-rides everything the head man suggests. The greenkeeper, fed up with all the arguing, has decided to toe the line and do just what he is told - e.g. scarify and top dress in early February when there is a hard frost in the ground, never close the course, and if it snows the green staff will be laid off without pay! Not surprisingly, this course is going down hill even faster than Eddie the Eagle, and serves to highlight the enormous potential for 'quality' courses when one considers the vast numbers who play these 'mickey mouse' set-ups, simply because there is nowhere else to go.

MICK LATHROPE

SOUTH WALES

First, I must apologise to Celtic Mowers and their managing director, Mr Kim Davies, for not acknowledging in print the recognition they so rightly deserve. As a section we are indebted and thank them for their financial donations throughout 1991 towards both education and the new knockout competition, which was played last year for the first time. In my last report, I forgot to give the results of the above mentioned competition, played for throughout the season: Huw Morgan won the Matchplay Shield, the first prize of £75.00, and an engraved salver. Phil Swain was runner-up, winning £50.00 and also taking an engraved salver. Beaten semi-finalists were Idwal Morris and Anthony Iaffrate, both of whom won £20.00 and statuettes. It is hoped that the Knock-out Competition will continue in 1992 and that the generous sponsorship will again be forthcoming - I will publish details as soon as possible.

At the Christmas competition we presented Dennis Archer with an engraved clock - this in recognition for all his hard work done at both regional and national level before ill-health forced him to take things a little easier. Dennis will still be helping out at section level, and for that we are most certainly grateful. We also wish him well in the hope that future operations required for cataracts will be totally successful and that we shall see him back after the summer is over.

In the same vein, it was with regret that we learned of Ted Thompson's recent illness, the surgery required and the unfortunate relapse suffered of late. We hope Ted will be back to full strength before too long and will soon be strolling the fairways again with his fellow greenkeepers.

Movements within the section:

David James recently left Newport GC to take over at Glynneath GC, Paul Davies has moved from St Pierre to take over as deputy head greenkeeper at Tredegar GC, with Stuart Lindsay (who hails from West Lothian) having taken the deputy head greenkeeper post at Southern-down GC. We hope to see them at future section meetings and send them all our best wishes for success at their new Clubs.

I would like to urge as many members as possible to attend WESTURF '92 at Long Ashton GC, Bristol, on April 29th, 10am - 5pm.

FIXTURES FOR 1992

April 9th: St Mellons GC, Cardiff Cup and

Iseki Qualifier. 18 holes of golf, followed by an afternoon talk, meet 9.30am. April 29th: Westurf '92, Long Ashton GC, Bristol. May 14th: Cradoc GC, Jacobsen Cup and Brown's Shield, 18 holes of golf meet at 12.30am. May 28th: Match against Club secretaries. Southern-down GC meet at 11.30am. June 17th: Iseki Regional Qualifier at Isle of Purbeck GC. July 2nd: Southerndown GC, Birdie Cup. 18 holes of golf, meet at 12.30am. September 9th: St Mary's GC, Pencoed, for the Presidents Shield. Play over 18 holes, followed by a talk in the afternoon, details to follow. Meet at the Club at 9.30am. October 7th: Annual match against South-West at St Pierre G&CC. Tee time to be arranged. December 16th: Pyle and Kenfig GC. Christmas Competition and AGM. Playing for the Vitax Shield. Meet at the Club 9.30 am. A note from Huw Morgan, our handicap chairman: All members must produce their membership cards and handicap certificates at every meeting. Failure to do so could result in not being allowed entry. Will winners please return the relevant trophy to be played for on the respective days.

Finally, Hugh Parry, our section chairman and national board representative, has asked me on his behalf to send congratulations and thanks to the staff at HQ for their hard work at Harrogate, which made BTME such a success.

PHILIP SWAIN

NORTH SCOTLAND

On behalf of the section, I would like to congratulate our very own member, Gordon Moir, on his election to the post of vice-chairman of the Scottish Region, and of course to John Crawford, who has taken over from Harry Diamond as chairman. Harry is a hard act to follow but I'm sure that John will prove a very able replacement. Thanks finally to Harry for all his hard work.

As promised last month, here are brief profiles of the first four speakers at our conference later in the year. First will be Simon Gough, the amenity and industrial manager for the Chemical Spraying Company, Perth. Mr Gough will talk on "Health and Safety for Golf Courses". This is quite a poignant subject in these days of certificates and pesticide laws. Second will be Dr. Neil Baldwin, plant pathologist at the STRI, who will discuss "Turf Diseases in Scotland". Mr Baldwin was a speaker at our conference last year and we shall look forward

to another informative session. Following coffee, we shall hear from John Souter, of Souter of Sterling, who is to talk on the setting up of a new golf course in the north of Scotland. Next we are fortunate to have the secretary of the Royal & Ancient, Michael Bonallack, whose talk will be "The Role of the R&A in Greenkeeping Education". The remaining four speakers will be profiled next month.

Finally, have you bought (or sold) your 200 Club ticket, or failing that, returned it for resale? I look forward to seeing some of → 58

CLASSIFIED And there's more on Page 57

Tenders



CHRISTCHURCH
ENVIRONMENT & LEISURE DIVISION
LOCAL GOVERNMENT ACT 1988

TENDERS FOR GROUND MAINTENANCE

The Council intends to let the following grounds maintenance contracts as two separate packages to run for a period of 5 years from 2 November 1992.

1. Contract No. 1 (General) comprising of wide variety of work to include open spaces and general amenity areas throughout the Borough, allotment gardens, woodlands, highway shrub beds and roundabouts plant containers and the Grounds of Highcliffe Castle.
2. Contract No. 2 (Sports/Fine Turf) comprising of two individually located Bowling Greens and Hum Bridge Sports Ground housing Christchurch Football Club, football pitch and high quality cricket pitch. The contracts will be output performance based.

Specifications will be available for inspection on purchase at £50 each by the end of May 1992 at the Civic offices.

Contractors wishing to be considered for inclusion on the select list must write to The Manager, Environment & Leisure Division, Christchurch Borough Council, Civic Offices, Bridge Street, christchurch, Dorset BH23 1AZ by April 24, 1992.



MILTON KEYNES
BOROUGH COUNCIL

MILTON KEYNES BOROUGH COUNCIL

TENDER FOR GROUNDS MAINTENANCE WORKS: STAGE 4

In accordance with the provisions of the Local Government Act 1988, the Council will be inviting tenders for Grounds Maintenance in parts of the Borough. The work will comprise:

Complete Landscape Maintenance of the Council's two municipal golf courses situated at

1. Windmill Hill, Bletchley and
2. Abbey Hill, Two Mile Ash Milton Keynes.

The works will be of a specialist fine turf nature associated with the maintenance of golf courses.

Specimen Contract documents and indicative plans will be available for inspection from Wednesday 22nd April, 1992.

Applicants wishing to be included on the select tendering list should be of a sufficient size to undertake the work and have a proven history of fine turf maintenance relating to the maintenance of Golf Courses.

Applications for a copy of the questionnaire for Contractors should be made to:

Assistant Director (Services Administration)

Milton Keynes Borough Council

PO Box 113 Civic Offices

1 Saxon Gate East

Milton Keynes MK9 3HN

Telephone (0908) 682454 (Questionnaires) or (0908) 682574 (Appointments).

Completed Questionnaires must be returned to the above address by Friday 15th May 1992.



CASTLE COMBE GOLF CLUB COURSE MANAGER

FOR PRESTIGIOUS PETER ALLISS/CLIVE CLARK DESIGNED COURSE
CASTLE COMBE WILTSHIRE
NEGOTIABLE PACKAGE

The new Castle Combe golf course, set in 200 acres of outstanding natural beauty in the southern Cotswolds, is due to open later this year and aims to become one of the top courses in the country.

Reporting directly to the Chief Executive you will join the senior management team at this exclusive members only club and become responsible for all aspects related to the management of this exceptional 18 hole course, including staff training, budgetary control and equipment specification.

Obviously for a position of this seniority you will need a relevant qualification and a minimum of 3 years senior greenkeeping experience, preferably with a working knowledge of sand greens.

In addition you will need to demonstrate an understanding of computerised irrigation systems and competence in health and safety practices.

A genuine interest in environmental issues is also an essential prerequisite for all candidates.

We can offer an exceptional salary package for the right individual and applicants should apply giving full personal and career details to:

ANTHONY WALTERS, MANAGING DIRECTOR,
CASTLE COMBE GOLF CLUB, CASTLE COMBE, WILTSHIRE SN14 7PL
CLOSING DATE FOR APPLICATIONS APRIL 30TH 1992



ROYAL NORWICH GOLF CLUB

requires a

HEAD GREENKEEPER

The applicant is to be currently in a supervisory capacity at a quality Golf Club.

The successful applicant will have a sound knowledge of greenkeeping techniques and be skilled in man management.

Full CV to:
The Secretary
Royal Norwich Golf Club
Drayton High Road,
Hellesdon,
Norwich NR6 5AH

DOUGLAS GOLF CLUB



Founded in 1910

HEAD GREENKEEPER

Douglas Golf Club requires AN EXPERIENCED HEAD GREENKEEPER. The successful candidate will be responsible for all aspects relating to the upkeep and maintenance of the 18-Hole Course and Grounds to the highest standards in accordance with an approved Work Plan.

Accommodation available, if required.

Replies with full CV to:

The Manager
Douglas Golf Club
Douglas
Cork
Southern Ireland

By 25th April 1992