

Part 4
In which
Mr Lidwell sings the
praises of 'a visit
from the agronomist'

For a reason that I find difficult to understand, some chairmen of green and greenkeepers dislike the idea of a specialist coming to their course. They seem to think that if anyone has to give them advice, they have failed.

Actually nothing is further from the truth. The world outside of Golf Clubs operates on that very basis. The larger the company the greater the number of specialists employed. They take the sensible view that no one person can keep up with all the latest developments and that if they are to maintain their own standing in the business environment they must employ specialists to keep them advised.

Briefly, the STRI was established in 1929 under the title of 'The Board of Greenkeeping Research' to provide a service to Golf Clubs. It was re-constituted in 1951 as the 'Sports Turf Research Institute' and its work expanded to cover all sports played on a grass surface. Most of the major sport-controlled bodies of the British Isles are members through nominated representatives. Its affairs are administered by a board of management which includes representatives from the Royal and Ancient Golf Club and the Golf Unions, together with those from Association Football; Rugby; Lawn Tennis; Bowling; Cricket; Hockey; The British Association of Golf Course Architects and of course your own Association, BIGGA.

Many Golf Clubs like my own have joined the Institute and receive an annual visit from one of their agronomists. His visit takes the form of a walk-about. We select a route which takes in locations on our course that have received his previously recommended treatment and also includes areas where we feel in need of advice. We are always pleasantly surprised at his detailed knowledge of our course, it being obvious that he does us the honour of preparing well for his visit.

After our course walk-about, we retire to the board room for a cup of tea and a chat. This is a most valuable part of the visit, affording the opportunity to both check our notes and confirm recommendations which can be put in hand prior to publication of the report.

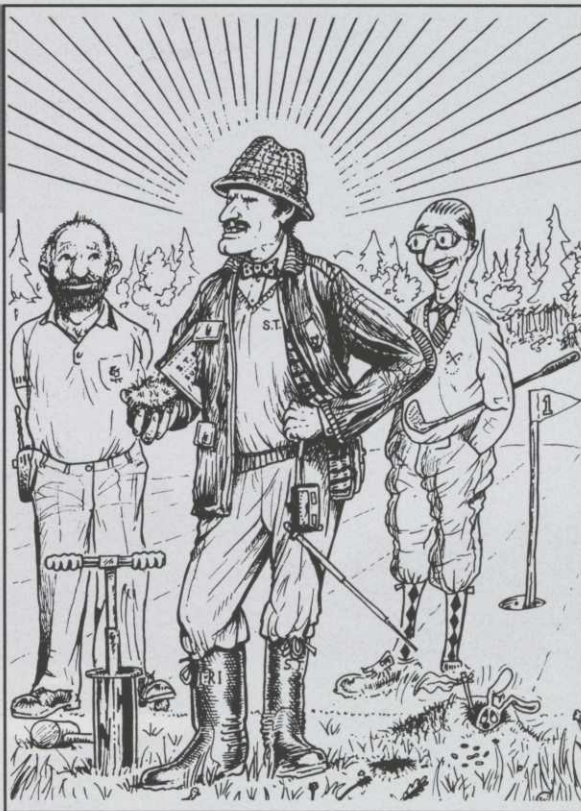
Shortly after the visit we receive his report which usually includes these sections:

- Introductory remarks: A brief survey of the general condition of the course.
- Course Survey; A detailed survey of those parts of the course on which the agronomist wishes to make comment, together with those where he was asked for advice.
- Recommendations: Discussed recommendations for course maintenance together with detailed treatments, quantities and rates of application.
- Other points: Comments, suggestions and recommendations as a result of the visit. Our own reports have included details on the building of a bunker with a revetted face, arboreal work, the extension of a green and the emotive problem of trolly use in winter.

As a definite policy, my committee arrange for a copy of the report to be displayed for all to see in the clubhouse. Naturally, the greenkeeper also receives a copy which he displays on the notice board in the mess room. When the report arrives I have an immediate responsibility to evaluate the cost of the recommendations, together with the effect such changes may make on the regular maintenance programme.

To obtain an overall view of the recommendations I prepare a large sheet of paper with the operations along the top and the work locations - Green; Temporary Green; Collars; Aprons; Tees; Fairways and Rough - down the left hand side. By working through the report and noting the details in the appropriate section I can be sure of making a full evaluation.

This type of analysis allows me to see at a glance the requirements at each location. The greenkeeper also has a copy for his notice board and uses it as a reference. It removes the need for him or his staff to spend their valuable time sorting through



THE
OTHER
SIDE
OF THE
GREEN

paragraphs of the report.

While I am obviously advocating the use of the STRI and a visit by an agronomist I have made no mention of their research facilities, which are concerned not only with sports turf but with all amenity grass areas and artificial turf surfaces. Some of their research is funded by outside bodies, but we all benefit when results are published. Their activities also extend from feasibility studies on potential golf course sites to the ecological and conservationist issues of established courses. We should all make use of their good offices.

STOP PRESS!

AERATION & DRAINAGE SERVICES

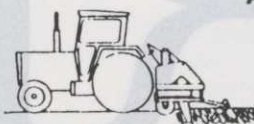
now offers the ultimate in aeration

TORO
HYDROJECT
3000

Call now for hire rates.
 We also have large and small
 verti-drains, turf conditioners,
 trenchers, etc.

Contact: Paul or Lesley Wright
 Aeration & Drainage Services

20 Westminster Close,
 Eastbourne, Sussex BN22 0LQ
 Tel: Eastbourne (0323) 506725
 Mobile: (0860) 838241
 Fax: (0323) 411980



AD
 REF
 43



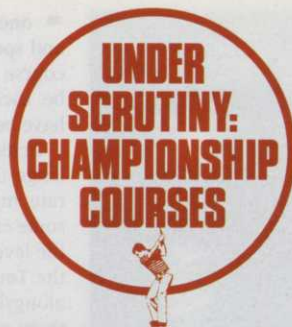
How the PGA provides a

STRENGTH



Tour of

THE



Number 2: PGA EUROPEAN TOUR

Bruce Jamieson, pictured, is a man who gets results. As Director of Agronomy for the PGA European Tour, that's one of many required skills. DAVID WHITE reports



The final shot on the first play-off hole at Wentworth, a stiff-to-the-flag five iron from Seve... he's home and dry, a worthy winner of the PGA Championship. Such is the stuff of which dreams are made and which makes golf such a perfect spectacle. But how are such courses prepared for a major championship?

To get the facts was not difficult, for the PGA European Tour boast as their Director of Agronomy Bruce Jamieson, a talented young Scot with a dead cert family background – his father and brother are both professionals – who has achieved his goal by working through the ranks as greenkeeper, head greenkeeper (at Powfoot and Royal Porthcawl) and who has never once dismissed the need to follow the learning curve. Learning was the very key to his present role and followed a familiar Scottish pattern of Elmwood College for City & Guilds in Greenkeeping, a positive and substantial portfolio of turf management and self-improvement courses at other colleges and finally graduation into 'fully trained management' – his ultimate aim – via examination and graduate membership of the Institute of Industrial Management. He is proof positive that greenkeeper education works!

At Porthcawl, where he masterminded the course for at least two National Championships, his skills were instantly recognised. In their wisdom the Club saw that he was outstripping his earning potential and planned for him to be released, as a designed campaign, to give advice to other Clubs in the area. In the event a different challenge presented itself and he joined the PGA European Tour as a Tour Administrator. Suddenly things were not the same. Opportunities abound for a man of knowledge and in offering advice to the green staff at a Tour venue in Italy and subsequently at other European venues, his skills of communication were observed and monitored to an extent that within a short space of time he was appointed to his present role by PGA European Tour Executive Director, Ken Schofield.

How did it happen? It seems simple enough, for he has a gentleness and calm that inspires confidence. He talks with people, not at them. He listens; he has sympathy; he understands. He's been there. Above all he doesn't tell people what to do, he merely suggests better or different ways of achieving a goal – the goal that both parties want. And he gets results.

I was interested to learn how he ensured reaching what is all-important to tournament players: that the quality of the course and the condition in which it is presented to them is as good as it possibly can be. How, for example, does the whole thing start?

A tour venue, once mooted, gets to first base only after several imponderables have been thoroughly examined and the site found to meet specific criteria. Location is, naturally enough, ➤



Methyl Bromide gassing

● Previous page:
Attention to detail
at Austria's
Gut Altentann

→ one such criteria and access for traffic and spectator accommodation another. The course must have playability and this will be ascertained only after several rounds have been played by senior Tour officials.

Achieving playing conditions that challenge the world's best golfers may necessitate minor alterations and within reason some changes may need to be made to, say, the levelling of a tee or its enlargement. It is the Tour's role to give such advice, to work alongside golf course personnel, to help them achieve the standards of preparation that are required for tournament play. A venue is visited six months prior to an event and informed discussions will take place with the head greenkeeper about his planning for the event and the logical approach seen to be necessary leading up to the tournament. The head greenkeeper is free to talk to Bruce at any time if he has a query,

or seeks confirmation of a planned course of action. Bruce has a lengthy check list which outlines a programme to be attained, but the impression I gained was always of joint consultation, advice, suggestion. Never insistence.

If, for example the Club is short on greenkeeping staff, and if the head greenkeeper is happy to accept help, the Tour can supply the Club with three qualified greenkeepers – Roger and Richard Stillwell and Mark Lewis – and they arrive a week prior to the event and stay on until the event is over. Roger Stillwell, who like Richard is an independent consultant greenkeeper, is seen as something of a 'fire-fighter' – a problem shooter if you like. He's around if needed and often attends three or four months in advance. Now they've added to the team, with BIGGA TORO Student Greenkeeper of The Year finalists attending during a tournament. This year two finalists attended St Mellion for two weeks and proved invaluable to the team, whilst gaining additional skills.

I touched on the grass species conundrum and asked about *Poa annua*. It was a subject that Bruce instantly warmed to and one on which he holds firm views. He believes that the *Poa* problem can be solved quite easily.

'We have this dogma in Britain about

Get rid of

'We've had a situation over the past 20 years where consultants like Jim Arthur and the STRI have given good solid advice for maintaining bents and fescues and achieving them back into the sward' he said. 'But it's a very slow process and I believe golfers today are too impatient and don't want to wait years for good surfaces. Anyone thinking they can revert 100% *Poa* to bent and fescue in under ten years by slow management methods is dreaming. They'll maybe knock it back to 30% in the first two years, but getting rid of that 30% is going to take another ten years. Then you have the problem of seed that's been laid down in the thatch layer still germinating maybe two years after. Therefore you can have an invasion of the sward any time opportunity presents itself to the *Poa* remaining.

'You've also got several different types of *Poa* in greens, not just one. There's a stoloniferous variety and one that grows by rhizomes as well, so all the slitting that we do to greens, although it encourages the bent grass to shoot stolons and rhizomes, actually encourages the *Poa* as well. It's easy to say you will get rid of *Poa annua* – meaning the seeded head producing variety – yes, you certainly will, but whether you get rid of the variety spreading by stolons, that's another matter, and I don't believe you will.

'At El Salar they have a *Poa* problem and every three years they take four greens, cover them with polythene after aerifying with a hollow tiner, and gas them with Methyl Bromide. It kills the greens stone dead to a depth of four inches. They clean up the thatch, leave it for two weeks, score new seed into the soil – in their case pure Pennncross, which germinates in six days – and in six weeks they have a fine putting surface which lasts for three to five years, or even longer, depending on how they're managed. I believe that's a route we should consider in Britain. If you've got a *Poa* green and want to get rid of it, gas it! Get it cleaned out, sterilise the soil, re-seed it with what you want and manage it accordingly. I believe you can then retain it, but

MAXEL golf

"THE COMPLETE SERVICE IN GOLF COURSE CONSTRUCTION"

CONSULT US WITHOUT OBLIGATION

**Maxel Construction and Management Services Ltd.
Manor Cottage, 1 Front Street, Whickham,
Newcastle upon Tyne, NE16 4HF.
Tel: (091) 496 0312. Fax: (091) 496 0084**



retaining what we have, no matter how bad it is – why not start again?'

a Poa green – gas it!

you've got to do something to kill all the seeds in the ground and sterilisation by the Methyl Bromide method is, in my opinion, as good as any'.

'Why', I asked 'is this not more widely known, why don't the STRI advocate such a programme?'. 'I don't know', he said. 'Maybe they have thought about it but think it's an unacceptable option. For those Clubs that come off their greens in October, and there are more and more enlightened ones that do – for protection, or to attempt to solve high percentage Poa problems, bad thatch layer or what have you – and when a sensible management programme is being followed, there is good sense in going the whole hog by sterilisation and by gassing. That's my opinion'.

He grinned wryly, intimating that such a view might well be slammed by everyone that ever worked in the golfing world. 'But it works', he insisted, 'it's been proven and results cannot lie. Why should greenkeepers suffer, why should they have such doubts? Why not just kill it and start again. We have this dogma in Britain about retaining what we have, no matter how bad it is – why not start again?'

Again Bruce stressed that the PGA European Tour is not in the business of changing golf courses. 'We're criticised enough for the height of cut used during tournaments, but before I came into this post there wasn't a Tour official who had ever worked on a golf course full time. No official ever advocated a specific height of cut. It was a greenkeeper that set the height at one-eighth of an inch, he told other greenkeepers what he'd done – he set the standard at one-eighth, no one else. To scream blue murder because someone comes along and wants the greens quicker and the only way he knows is by cutting them lower – that has nothing to do with us'.

We discussed alternatives, the use of the Australian Turf Iron for example. In a word, 'fantastic' was his answer. 'It gives you what you want, doesn't damage the putting surface, gives you

the surface you need, quickly. It may cause compaction, but so do players and that's why we have Cushmans with a slit tiner on the back. Twice over after the tournament and you're back where you started. It's easy to scream "don't do it" because it's damaging, everything we do is damaging to grass, cutting to an eighth isn't very helpful to it, cutting at five-eighths if it's Poa pratensis isn't very healthy – it's going to die. We put grass in a situation where it's meant to grow tall and we hack it back every day'.

Bruce also suggested that much more research was needed in Britain on fertilisation. Not enough scientific data was available to the greenkeeper, with inaccurate application often causing root desiccation in most grasses – the only one growing healthily being Poa! He feels that too little research is being done into what nitrogen actually does to the roots and shoots. 'There's a point where you actually start losing roots for shoot growth', he suggests. 'Everybody knows it's there in the research industry, but no definitive figures are forthcoming. If you look at American books they talk about pounds of N per thousand square feet, a much more professional approach. It's all a bit hit and miss in this country'.

We returned to the subject of green speed, my suggestion that aiming for eight feet was too much for Club golf on a regular basis being dismissed. 'I think they should', he said, 'when the grass is growing healthily, though there may be exceptions when fertiliser has been applied and the grass is lush, then the surface speed will be slower, or when water has been applied heavily. But in general terms, cutting at three-sixteenths makes a speed of eight an achievable figure if all the correct management procedures are followed. On tournaments a speed of 9.5 to 10.5, consistent on all greens, is ideal, though on severe sloping ground a speed of eight is better and avoids the vexing problem of a ball scampering several feet past the cup and off the green. That's silly, it doesn't create good golf, rather it →

RFE - RFE - RFE - RFE - RFE - RFE - RFE - RFE - RFE - RFE - RFE - RFE - RFE - RFE - RFE - RFE

RFE Turf Machinery Ltd Machinery to the Professionals

Wedglen Industrial Estate, Midhurst, West Sussex GU29 9RE
Tel: (0730) 815775 Fax: (0730) 815844



BY POPULAR DEMAND WE'RE RELAUNCHING SUMMER!

WITH RECENT WET WEATHER YOUR GRASS IS GROWING FASTER THAN EVER!

— TAKE ADVANTAGE OF THIS MONTH'S SELECTION OF PROFESSIONAL TURF MACHINERY —

4' Bomford Flail
Cushman truckster 3W-Petrol
Ford 1520 (on turf)
Howard Price 727 Rotaries – New – P.O.A.
Jacobsen TriKing 3WD – Petrol
Shop-soiled McConnell Aeration Equipment – selection
Ransomes Bunker Rake
Ransomes Certes – choice

Ransomes Super Certes
Ransomes 340TG Magnas
Ransomes Towed Gangs – choice
Ryan Greens Air MkIV
Ryan Turf Cutter
Toro 216
Twose Vibrating Turf Conditioner
Sisis Auto-Roll



PRICES AVAILABLE ON REQUEST
**NATIONWIDE SPARE PARTS
SERVICE**

For all main brands of
professional machinery

★ SPECIAL ★

1 set of FORD
1900 Agricultural
Wheels & Tyres
£600

Main dealers for Allen - Easy Picker - Iseki - Jacobsen - Woods

We buy and sell – always willing to take part exchange

RFE - RFE - RFE - RFE - RFE EXPORT FACILITIES AVAILABLE - RFE - RFE - RFE - RFE - RFE

AD
REF
8

WEED FREE GREENS!

IMPOSSIBLE? NOT AT FRAY-LANGUARD LTD - THE METHYL BROMIDE FUMIGATION SPECIALISTS.

"PUTT" IT TO THE EXPERTS

Fray-LanGuard Ltd

13 Church Lane, Husbands Bosworth, Lutterworth, Leicestershire LE17 6LS. Tel: 0858 880898. Fax: 0858 880720

→ destroys the ability of a good golfer to score'.

He talked of The Masters and how each green has a single greenkeeper, each responsible for a consistent speed, some may need one cut, others four or five, but each will be the same as the other. Greenkeepers in Britain and on the continent, however, are under resourced and have perhaps two or three triples for a whole course. No problem, in Bruce's view, providing each mower is set on the accubar gauge to the same tolerance. A good triple cut, cut at a 45 degree angle on the second cut can present the greens very nicely. The stimpmeter is also a useful tool, he says, giving the greenkeeper information that he should want to have.

Many Clubs do not get paid to stage a Tour event, yet there are more and more who are actively seeking to be on the rota. What do they get from it? Members can expect to gain from their hard work and sacrifice. Benefits are tangible and intangible. The clubhouse may receive a face-lift, the golf course will certainly benefit from the maintenance programme, from the picture it presents to the world, and the spirit that pervades throughout ensures that pride is increased. One positive bonus is the knowledge gleaned on how to manage a course through a stressful period, the increase in traffic and wear and tear. Greenkeepers are often pleasantly surprised at how much the course can take when preparation is programmed and the experience of managing turf 'at peak performance' for a week becomes a priceless bonus when preparing for future Club championships. The kudos to a greenkeeper in seeing a job well done is beyond measure. Taking a direct comparison between Wentworth, a world-renowned course designed by Harry Colt, and Coombe Hill, another Colt design and in many ways very similar in quality and playability, but little known outside of London, the Wentworth course has hosted tournaments for the past 30 years and is the one everyone wants to play. That international recognition continues to the benefit of members long into the future.



A Cornish jewel: the 5th at St. Mellion, a PGA Tour venue

AD REF 325

MORTGAGE FUNDS AVAILABLE TO BIGGA MEMBERS AT 10.75% FIXED

THE BIGGA PERSONAL PENSION PLAN

BIGGA is pleased to announce that with immediate effect, the minimum premium for the BIGGA Personal Pension Plan is reduced to only £15 per month for all greenkeepers. So now you can take full advantage of the tremendous benefits that the plan offers for a lower monthly outlay.

THE BIGGA MORTGAGE SERVICE

BIGGA is pleased to announce a new service for all members, which will make it easier for greenkeepers to secure the best mortgage offer when they are either buying a new house or refinancing the purchase of their existing property. The Association is well aware of the exceptional demands placed upon its members because of the nature of their work. Greenkeepers do not always have the time to explore all the mortgage possibilities available.

NOW is the time to find out more. Please complete the form below and post to:
Executive Director, BIGGA, Aldwark Manor, Aldwark, Alne, York YO6 2NF

- | | |
|---|-----------------------------------|
| 1. I will soon be/am in the process of buying a house. Please send me details of the new BIGGA Mortgage Service | Tick box <input type="checkbox"/> |
| 2. I already pay for a mortgage on my house, but I wish to know if any better mortgage arrangements are available to me | <input type="checkbox"/> |
| 3. I am/am not in a Golf Club Pension Scheme. Please send me details of the new 1991 BIGGA Pension Plan | <input type="checkbox"/> |

Name.....Date of Birth.....

Golf Club and Job Title.....

Home Address.....

.....Post Code.....

Tel No. (Work)..... (Home).....

Howard Evans Financial Services is an appointed representative of Standard Life and is a special financial advisor to BIGGA. Pensions, Investments, Savings, Life Assurance, Mortgages, Commercial Loans, Tax Planning, Health Care and Financial Management

GI 7.91

Lautro



B.E.M. for former BIGGA Chairman

It is with great pleasure that the Association learnt of the award of the British Empire Medal to Walter Woods in the recent Queen's Birthday Honours list.

The Award was made to recognise his services both as Links Supervisor at St Andrews and to the greenkeeping profession. Walter, pictured, played a leading part in the establishment of BIGGA in 1987 and indeed was the first Chairman of the Association. His has been a key role in the development and progress of the Association and rarely a week goes by without Walter contacting the office with a new idea or some relevant suggestion. Those who know him will vouch for his forthright views, warmth of personality and at all times his determination to enhance the greenkeeping profession and the well-being of greenkeepers.

I am sure that the Association will continue to enjoy his practical support and be able to call on his technical expertise for many years to come. Many congratulations Walter on this very much deserved recognition for all you have achieved for the greenkeeping profession.

NEIL THOMAS, Executive Director



Bookings are up for '92 Exhibition

HEAD OFFICE
NOTICES

It is interesting and very encouraging to note that despite the current depressed economic climate, confirmed bookings for our 1992 exhibition in all three halls are well ahead of expectations, which only seems to confirm the growing popularity of BIGGA's January show.

A limited number of excellent sites are still available, but won't be for long! In fact, at the recent Landscape Industries show a new 1992 exhibitor was overheard expressing anxiety as to the outcome of the deadline for 1991 exhibitors to confirm space, as he was awaiting confirmation of his own application and space allocation.

New and potential exhibitors in the UK, Europe and the USA, will be receiving details very shortly and will no doubt accelerate the take-up of remaining stands.

The 'no cost to user' facility provided by the hotel booking agency INNTEL will again be available, thus making it easy for exhibitors, delegates and visitors alike to arrange their hotel accommodation for their stay in Harrogate. To avoid any rush you can call now, asking for Annie Moncrieff on 0206-211106. Remember that the BIGGA headquarters hotel is The Old Swan and accommodation can also be booked there through INNTEL.

January 1992 may seem a long way off, but it is wise to make sure of your exhibition space and accommodation soon. Details of the seminar programme, which is always of great interest to our members, will be announced shortly. For any further information, please call Debbie Savage on 03473-581/2.



BIGGA National Golf Tournament

Royal St David's, Harlech, 5th, 6th, 7th August

The final date for entry is Friday 19th July. If you haven't already done so, mail your completed entry form to BIGGA Headquarters - now!



BTME
BIGGA Turf Management Exhibition and Seminar Programme 1992

22 - 24 January 1992,
Harrogate Exhibition Centre



Make a date
in YOUR diary for the
industry's premier event

Have you booked your stand space?

Space is limited... and it's going fast.

Book now - ring Debbie Savage on 03473 581/2

THE WORD IS OUT!



TRIMS DOES IT ALL!

Greenkeepers around the world are using **TRIMS Ground Management Software**.

TRIMS is the one and only software system designed with the help of greenkeepers to meet the challenge of today's record keeping requirements.

TRIMS Record Keeping Features include:

- Budgets & Expenses
- Equipment Maintenance
- Spare Parts Inventory
- Purchase Orders
- Material Safety Data Sheets
- Fuel Inventory (UST's)
- Personnel Records
- Labour activity
- Work Orders
- Irrigation
- Chemical Usage
- Fertiliser Application

Call or write today for your **FREE** Demo Disk (state size: 3 1/2" or 5 1/4") and see what **TRIMS** can do for you!

Contact BIGGA HQ, Aldwark Manor, Aldwark, Aline, York YO6 2NF
Tel: 03473 581/2 • Fax: 03473 8864

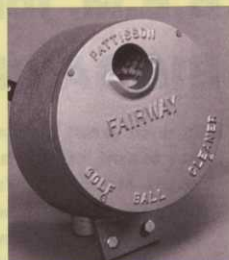
TRADE TOPICS

■ High winds can make a pipe smoker thoroughly niggardly on a golf course when the matches won't stay lit. Thus at The Belfry I was impressed with the super Western Log Company shelters, which offer a comforting break from any wind and rain. With 12 of 'em dotted strategically around, this smoker was able to indulge his filthy habit with nary a problem. The golf was good too! Western Log are on 0639 896715.



■ A new bunker/green rake – called the Ulti-Mate – has been given the thumbs-up at the Belfry and looks set to make its mark elsewhere. All-plastic, it features a grip guard to keep the handle free of sand and a blade which the makers suggest can be used to clear a path to the hole when early morning golfers are faced with dew. Forgive me for mentioning it, gentlemen, but is that not a contravention of rule 23? For details, call 0792 296624.

■ Taken to task for my comments in May on 'those dreadful tin box and sliding brush affairs' in describing ball washers and how neglect of little items around the course can cause irritation, I am reliably informed by Patissons that quite apart from losing favour, these are more popular than any other ball cleaner sold in Britain. However, plastic has taken over from tin and metal fittings are now galvanised. Whilst never intending to 'knock' a particular model, my comments on clapped-out equipment and tardy replacement remain firm. Suitably chastised, I still admit to a personal preference for Patissons 'FAIRWAY' rotary cleaner, which is a gem. Details, telephone 0582 505241.



■ Toro's innovative Hydroject 3000, featured in June, has its first UK buyer, D & E Turf Maintenance of Shildon, Co. Durham. First announced at BIGGA's January exhibition, we understand that enquiries received were quite staggering. Original sales forecasts have been rapidly ditched and are now expected to be at least 100% in excess of target.

■ Booker Seeds Ltd, acquired recently by the Dutch Royal Vanderhave Group BV, has changed its name to Sharpes International Seeds Ltd. For day to day trading the company will immediately adopt the more streamlined title of Sharpes International. To coincide with the launch of the new name, Sharpes International has also published a comprehensive brochure which provides a detailed insight into their breeding/trialing programmes, quality control facilities and extensive varietal portfolio. Copies from Boston Road, Sleaford, Lincs, telephone 0529 304511.

■ Supaturf have produced a colourful new eight-page brochure detailing their range of Top Line pressure spray line marking machines that are streets ahead of the hand-held aerosol. Well worth investigating, copies are free by 'phoning 0533 750256.

TORO Quite Simply Machines That Guarantee

There's just nothing to beat the dependability and high performance of the **TORO REELMASTER 450-D**

This exceptional machine has been designed with its weight evenly distributed around a centre mounted 50 hp engine. Climbing ability and traction is so easy ... in virtually all weather or ground conditions. All controls are in easy reach of the operator to provide greater comfort. And with transport speed of 15 mph and mowing capacity up to 7.5 mph productivity will be increased considerably. O-ring seals protect connections. Low PSI ... it all adds up to the 450-D.



You can aerate 61,000 square feet an hour at speeds up to 2.2 mph with exceptional hole quality. That's about four times as fast as other reciprocating models.

A wide swath pattern and fast speed put the Toro Fairway Aerator way out in front.

TORO Fairway AERATOR



Clears
consists
hole quality p
adjustable coring dep
control. Up to 5" with
two-tine head and up
3" with
six-tine he

■ To help maintain putting green quality at four of the 14 Whitbread courses, a delivery of 11 Lloyds Paladins has been made. Explaining the choice, Derek Keen, Area Course Manager for Tudor Park, Meon Valley, Breadsall Priory and Goodwood Park, said: 'We have trodden the triplex road for speed and cost-effectiveness but found they can mark the greens when used regularly... with pedestrian operated machines, we found they produced a better finish. Another factor is our greenkeepers. They get terrific job satisfaction from caring for the greens and it is very rewarding to use a machine that gives that final touch of perfection.' The 53cm width Paladin is powered by a Honda GX110 3.5hp engine and gives 138 cuts per metre.



Derek Keen takes delivery from Derek Haley of Lloyds

■ Colin Pryce, who has been operating a Terralift soil aeration service for the past four years, has formed a new company, C & P Soilcare Ltd. The new company will provide a complete soil care service and includes compressed air soil aeration, soil analysis and supply of conditioners which can be injected by Terralift or incorporated by convention means. They have the knowledge to sort out seemingly unsolvable soil problems, or know a man who can!



Pictured: The Terralift pneumatic Soil Conditioning Unit.

■ Ransomes have been chosen to supply a range of equipment to the Earls Colne Golf and Country Club, Colchester, built on the site of a World War II airfield, part of which is still used for flying. The full 18 hole course, together with 4 hole training academy and 20 bay floodlit range covers 300 acres and features 14 lakes and 25,000 trees. Praising Ransomes for their wide range, owner Mr Eric Hobbs said: 'I am a firm believer in buying British and Ransomes equipment really impresses me, it fits my bill perfectly.'

■ Agar Equipment Ltd have announced a new front mounted mower specially designed for use with Ford's CM224 Front Mowing Tractor. Featuring a fully floating head, fully castorised wheels, solid rubber tyres, high clearance and blade access by tipping the deck over, the new FM constitutes an exceptionally efficient grass cutting machine, especially where grass is difficult and uneven. Agar Equipment Ltd are on 0905 52717.

■ On December 31st the JLO factory in Germany ceased production of their two-stroke engines. Some JLO engines will continue to be made at Technamotor's Italian facility to the original design and full spares and service support is assured for both past and future production. In the UK and Eire, IPU of Wolverhampton will continue to provide service until September, when Technamotor (UK) Ltd will assume responsibility for all JLO related matters. Their number is 0784 450785.

The Best. Top Quality Guarantee Cost Effective Operation

There's no doubting the value and quality of TORO TURF MANAGEMENT EQUIPMENT.

Have a word with your local TORO dealer who will be only too pleased to arrange a demonstration depending only upon availability of machine ... they sell very quickly ... of course!

And with both contract and leasing terms available can you afford not to find out more about TORO.

TORO distributed by LELY (UK) Ltd
Station Road · St Neots · Huntingdon · Cambs PE19 1QH.
Tel: (0480) 76971 Fax: (0480) 216167 Telex: 32523



*in a class
of their own*

Cuts Costs ... Cuts Time ... Cuts Maintenance

When you have acres of parkland or miles of grass verge, it goes without saying that you need a machine that will do a good efficient cost effective job. There is only one answer. From the world leaders.

TORO REELMASTER 335-D

Good transport speed 0-15 mph. Heavy duty 1.9 litre 35 hp engine. Very manoeuvrable.

18" uncut circle ... with an 84" width of cut.
High 7" clearance.
Optional 2 or 4 wheel drive. 6 ply high flotation turf tread tyres.
It's a dream to control, plus the advantage of an adjustable steering column.



Please send me full details of

TORO REELMASTER 450-D TORO AERATOR

TORO REELMASTER 335-D (tick box required)

Name _____ GI.7.91

Company _____

Address _____

Post code _____ Telephone _____

The good, the bad

This feature was to have focussed on Britain's Local Authorities and their golfing activities. The many hours spent by your editor on asking questions – and receiving totally negative answers or being stonewalled – turned out to be the most unrewarding experience of all time. What have they to hide? Why are they so negative? Whose corner are they protecting? One highly capable head greenkeeper in charge of a local authority course in Kent summed it up rather succinctly by declaring that in his case the reason was one of ignorance: "None of the faceless ones from my authority know 'beans' about golf", he said, "and they frankly couldn't care less."

Local Authority Golf – getting it wrong X



Local Authority Golf – getting it right ✓

GOLF AT THAMESDOWN – a dutiful local authority and its golf programme

Thamesdown – the borough centred around Swindon – is extremely conscious of its duties to its citizens and over the years has invested in many amenity facilities. Their golf includes an 18 hole and two 9 hole courses, three pitch & putt courses and a 34 bay driving range. The majority of these are centred around the Broome Manor Golf Complex, where Kelvin Dudley is the head greenkeeper with a staff of six. Also under the same management in the adjoining Coate Water Country Park are extensive pitch & putt, mini golf and putting green facilities. The complex, under the management of Tom Watt, has a pro shop and a restaurant and bar, these being available for private functions.

The driving range, which re-opened recently with an additional 14 bays, has been given a sand-filled synthetic surface to allow the majority of balls to roll towards the centre for mechanical retrieval. It was the need to mechanise the facility (six million balls a year) which led to the refurbishment. Kelvin said that in wet weather balls 'plugged' and had to be picked and washed by hand.

The new carpet was made specifically for Thamesdown and extends over six acres. In re-contouring the site a considerable tonnage of clay subsoil was removed and replaced with a stone sub-base over which 500 tonnes of sand was placed. New lighting was installed and the range is now open from 8am until 9pm, seven days a week.

In common with most local authorities, the advent of competitive tendering has placed restrictions on availability of facts or figures which could be used by a competitive tender. Tom said this was regrettable, as they (Thamesdown BC) liked to be helpful, but CCT was a fact of local authority life and you never knew if the next complex manager might not be from a Dutch or French firm. Thamesdown have tendered for their own contract, and while expecting to win they are nervously awaiting an answer on their future.

Tom claimed not to be political, and within the popular meaning he certainly is not, however he is proud and possessive of Thamesdown's attainments and their 'value for money' services. In particular he is sincere in his belief of the

WESSEX

Sweeper Collectors

Collect leaves, grass clippings and litter from turf or hard surfaces.



The Wessex Sweeper is PTO Driven, has a big hopper which can be tipped from the tractor seat, and is designed to sweep clean even on undulating ground.

4ft & 6ft versions for tractors from 15hp



Optional guley brush attachment

WESSEX FARM MACHINERY SALES CO.
Trading Estate, Oakhanger Road,
Bordon, Hampshire, GU35 9HH.
Telephone 0420 478111

AD REF 210