

GI

GREENKEEPER INTERNATIONAL

British and International Golf Greenkeepers Association

£5.50 SEPT 2015

Featured Inside

PRODUCT TEST

Toro ProCore 1298
on Merseyside

Top Mark

We meet Mark Mennell of Fulford
Golf Club ahead of the BIGGA
National Championship 2015

ALSO INSIDE... WOODLAND MANAGEMENT : ROOT RECOVERY



1000 REASONS...



..to buy a Kubota B50 Series

£1000 CASH-BACK*

On B50 Series tractors ordered 1st August-31st October 2015

B50 SERIES 20-31HP **JOB DONE, EVERY TIME.**

Test drive a Kubota B50 Series compact tractor this autumn and you'll find a thousand reasons why these highly productive, robust and reliable machines may be the right tractor for you.

What's more, to get you started we'll give you £1000 cash-back on cabbed models or £500 cash-back ROPS models when you order a B50 Series by 31st October 2015.

Economic to run, reliable and highly efficient to operate; these compact, robust tractors are packed full of innovative standard features designed for high productivity and low running costs – ideal for 1000's of different tasks.



*£1000 cash-back available on B50 cabbed models /£500 cash-back for ROPS B50 models.

+Conditions apply to 2nd year see dealer for details

For more information Call: 01844 268 000
Visit: www.kubota.co.uk

For Earth, For Life

BIGGA



BIGGA President
Sir Michael Bonallack, OBE

BIGGA President Elect
Iain Macleod

BIGGA Chairman
Les Howkins MG

BIGGA Vice Chairman
Stuart Greenwood

BIGGA Past Chairman
Chris Sealey

BIGGA Board Members
Rob Welford, Andy Baker, Scott Reeves, Kenny MacKay, George Barr, John Keenaghan

BIGGA Chief Executive Officer
Jim Croxton

BIGGA General Manager
Tracey Maddison
traceymaddison@bigga.co.uk

BIGGA Finance & Procurement Manager
Steve Wragg
steve@bigga.co.uk

Contact Us
BIGGA House, Aldwark, Alne, York,
YO61 1UF
info@bigga.co.uk
www.bigga.org.uk
Tel – 01347 833800 | Fax – 01347 833801

GREENKEEPER INTERNATIONAL

The official monthly magazine of the British and International Golf Greenkeepers Association Limited.



Production
Design & Brand Executive
Tom Campbell
Tel – 01347 833800
ext 513
tom@bigga.co.uk
[@TomDesignBrand](https://twitter.com/TomDesignBrand)



Editorial
Communications Executive
Steve Castle
Tel – 01347 833800
ext 510
steve.castle@bigga.co.uk
[@SteveCas12](https://twitter.com/SteveCas12)



Advertising
Business Development Manager
Jill Rodham
Tel – 01347 833800
ext 519
jill@bigga.co.uk
[@JillyPops12](https://twitter.com/JillyPops12)

Printing
Warners Midlands Plc, The Maltings, Manor Lane, Bourne, Lincolnshire PE10 9PH
Tel – 01778 391000 | Fax – 01778 394269

Contents may not be reprinted or otherwise reproduced without written permission. Return postage must accompany all materials submitted if return is requested. No responsibility can be assumed for unsolicited materials. The right is reserved to edit submissions before publication. Although every care will be taken, no responsibility is accepted for loss of manuscripts, photographs or artwork. Opinions expressed are not necessarily those of the Association, and no responsibility is accepted for such content, advertising or product information that may appear. Circulation is by subscription. Subscription rate: UK £50 per year, Europe and Eire £65, Rest of the World £95. The magazine is also distributed to BIGGA members, golf clubs, local authorities, the turf industry, libraries and central government.



ISSN: 0961-6977
© 2015 British and International Golf Greenkeepers Association Limited

WELCOME FROM BIGGA



9th hole at Fulford GC - photo courtesy of Gary Pearce

BIGGA National heads north

August is clearly a very important month for our members, with many involved in summer renovation work and/or preparing for key events in the calendar. Social media has been full of photos and videos of various technical procedures plus debates and discussions on which processes are most efficient, recover fastest etc.

It has also, sadly, been awash with tales of flooded fairways and bunkers, a reminder that we are all at the mercy of the weather. I haven't been able to visit as many courses as I would like during the summer. Those that I have managed to visit have been presented beautifully and have also been busy, hopefully demonstrating golf in the UK is moving in the right direction.

It is an important time for the Association also as we finish all the preparatory work needed for BTME 2016, which looks set to be the biggest and best for many years.

The Continue to Learn programme, which will be officially launched in next month's magazine, is complete and is more comprehensive than ever, the Halls (five this year) are approaching capacity and Registration will open this month. All in all, everything is set for another fantastic week in North Yorkshire.

North Yorkshire is also the host county for this year's BIGGA National Championship sponsored by Kubota and Charterhouse.

I am thrilled that Fulford Golf Club, on the outskirts of York, will play host to BIGGA's finest golfers next month. The course has a fabled history, having hosted numerous European Tour events, though I expect many of this year's competitors will be far too young

to remember Bernhard Langer's iconic recovery from the greenside tree on 17!

Mark Mennell has cared for the course for four decades and brings a refreshingly old school approach to his role. A regular venue nowadays on the National amateur circuit, we are assured of an outstanding challenge. I hope to see many of our members taking time to enjoy (and in some cases endure) their own golfing exploits having spent the last few months toiling to provide enjoyable conditions for everyone else.

This edition is the 89th and last to have been designed by our Design & Brand Executive, Tom Campbell, who has been a key member of the team here at BIGGA House for seven years.

Tom's design skills were recently and deservedly recognised when GI magazine won Best Design Publication at an international turf industry award ceremony. He is moving on to pastures new outside this industry, I would like to thank him for his important contribution and wish him the very best of luck in his new challenge.

Enjoy the read and the design.



Jim Croxton
Chief Executive

GI CONTENTS

A look at what's inside the magazine this month

SEPTEMBER 2015

FEATURES

26 Stress protection

Bayer look at the options as greenkeepers target renovations

32 Product test

James de Haviland looks at the Toro ProCore 1298

34 Building Beaverbrook

A tee to green solution from Tarmac TopSport

36 Woodland management focus

Focus on woodland management strategies

38 Autumn root recovery

Guidance from Syngenta looks at how to encourage autumn root recovery

40 Terra Rake perfects the fairways

How Wiedenmann kit has helped out at a Glaswegian club

42 At home on the Grange

A real turnaround for a club based in South Yorkshire

44 Another one bites the dust

In his latest BASIS article, Sherriff Amenity's Graham Paul turns his attention to leatherjackets

48 Auto-enrolment: what you need to know

New pension legislation

50 Applying science to age old problems

On compaction in rootzones

52 Top Mark

A preview of the BIGGA National Championship at Fulford

56 Wildflowers at Wigan

How a BIGGA member has teamed up with Germinal Seeds in Lancashire

Building Beaverbrook

A tee to green solution from Tarmac TopSport

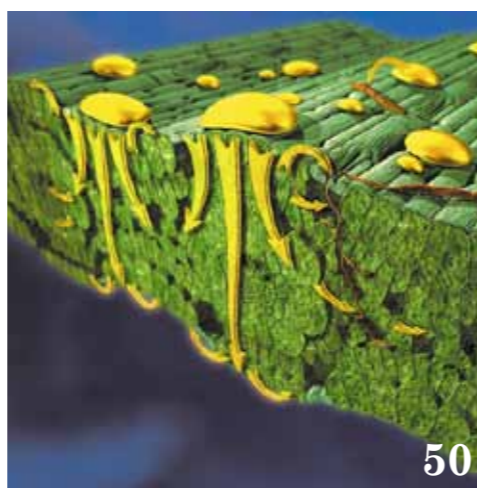
Golf in the UK is well known as an accessible sport, with thousands of clubs dotted around the country. Whilst the nation is home to some of the most famous courses in the world, the word luxury does not always spring to mind. However all this is set to change with the impending opening of the Beaverbrook Course at the 4000m hotel and golf course resort designed by some of the most prestigious names in the game. Based near Leatherhead in Surrey, and once home to Lord

Beaverbrook, Chertsey Court is set to push the boundaries of premium golf resorts. The new resort, developed by Longhirst Chertsey Court (LCC) and due to open in 2016, will house a 4000m hotel and the premier 18 hole Beaverbrook Golf Course. Co-designed by eight star major championship winner Tom Weir, along with renowned golf course architect David McLay Kidd (DMK), the Beaverbrook Course will offer the best opportunity to play on a world-class course. One of the standout features of the Beaverbrook Course will be its

USGA-accredited greens. Achieving such a high quality putting surface is out of reach for many clubs due to the associated requirements, accreditation and the need to adhere to strict standards. DMK approached Tom Weir to help with the years of experience in golf course resort design and construction via its specialist TopSport addition. For the Beaverbrook course, a range of high performance TopSport materials were heavily installed in nearly all aspects of the course's

construction, from trees to greens, and all the green surrounds. A crucial part of achieving USGA accreditation is ensuring the right outdoor matter is achieved. The USGA specifies that all outdoor used for greens must be tested for any potential product impurities and strength requirements. This ensures that any TopSport used will comply with the strict performance criteria laid down by the USGA, recommendations and will offer the necessary agronomic

support for the seed bed and growing processes. In order to help DMK achieve USGA accreditation for the Beaverbrook Course greens, Tarmac supplied over 12 thousand tonnes of its TopSport material to be used across all of the greens, as well as the green surrounds and tees boxes. The TopSport material was designed and mixed at a dedicated off-site mixing station from high quality sand, blended with carefully selected organic materials. This allowed it to maintain organic content and pH balance, as well as providing the best possible growing conditions for the three different play-off surfaces. Support for adequate drainage also had to be provided to provide throughout the year. Properly drained greens can result in a number of wetness maintenance issues, as well as having a detrimental impact on a player's stance as they are much more difficult to reach. Green Beaverbrook Course's vision of unsurpassed quality, a matter-of-the-art drainage solution was imperative. Drainage graded is a crucial element of a green's construction, and as with courses, must meet certain criteria in order to achieve USGA accreditation. Tarmac was again on hand to supply over six thousand tonnes of its specially designed TopSport drainage gravel to the Beaverbrook Course. The gravel was designed to meet the performance criteria required when an intermediate gravel layer is not used in the green construction. Bridging, permeability and uniformity to efficient criteria were all met by careful source selection, which included the ability to wash and screen to a well-defined grading. The overall drainage and growing media grade profile from the green's surface, ensuring available play times are maximised. Peter Cullen, Technical Sales Manager, for Tarmac's TopSport team, was heavily involved in the specification and supply process for the Beaverbrook Course at Chertsey Court. "All construction materials supplied to the Beaverbrook Course, including the drainage gravel, the TopSport and the blended outdoor product, had to be produced to the USGA Recommendations for putting green construction, which involved an incredible amount of pre-testing and pre-production work to ensure we could meet the best. "One of the key challenges involved the production of USGA outdoor matter produced at Chertsey Court in Hampshire which is then blended with a specially graded TopSport material. It is a growing medium with very precise physical properties to support the very fine grasses needed to meet USGA requirements. It took probably about six months to achieve the right blend ratios to achieve the specifications. "Initially, the gravel had to be designed to meet the Beaverbrook Course's existing grading specifications. This was to ensure no fine sand blank the performance drainage pipes, which were laid in the horizontal style and then covered with 20mm of gravel, and 20% of the material, before being placed. "Whilst a significant amount of research and development has been undertaken to ensure only the best possible material was supplied for the Beaverbrook Course, we are extremely confident the end result will be one of the finest playing surfaces in British golf." Casey Krueberich, Senior Design Associate at DMK Golf Design and Site Manager at Beaverbrook Golf Course added, "Our design criteria changes from site to site, but here at Beaverbrook the designers wanted nothing less than the highest standard of greens in the country, or even in Europe. "The original best green greens were the only option for us to meet this brief, and so that we needed the very best green and tee construction possible, namely USGA Specifications. Sourcing a sand and a gravel that worked for us was crucial. "However it's not just about the product, it's also about the supply chain and dealing with vendors that we trust and believe in and that we know can be partners in the project. "The final product was fabulous, none of the best USGA sand we've ever dealt with, really consistent and exactly what we were after. Tarmac's TopSport team has been the best partner we could ask for on the job, they've been our biggest vendor and the supply chain they've produced has been fantastic." For more information, please visit www.tarmac.com/topsport.



REGULARS

3 Welcome From BIGGA

6 Chairman's Word

8 Newsdesk

- BIGGA president elect confirmed

-BTME 2016: to be one of the biggest yet

20 Membership News

22 L&D News

24 Industry Update

58 Around The Green

68 Greenkeepers Training Committee

70 Buyers Guide

72 Recruitment

74 @BIGGALtd



Published by the British and International Golf Greenkeepers Association Ltd



Chairman's Word

BIGGA National Chairman 2015, Les Howkins MG, gives his thoughts for the month

August washout for holiday season

August was a quiet month for Chairman's business but a busy one for greenkeepers up and down the country. Many have full mid-season calendars and have been carrying out greens and general course renovations.

Hopefully all those doing renovations have had good recovery and playing conditions are back to normal, and to those with golfing pressures hopefully you get your chance to do the work you want to do fairly soon.

After months of very dry weather down in the south east (well Richmond anyway) my family and I decided to book a holiday in the UK. Sure enough the next day, summer storms battered most of the UK with widespread flooding reported.

That's just my luck and I feel kind of responsible, so for those that needed a bit of the wet stuff, I'm glad I could help. To those that have had more than enough rain this summer, I'm sorry and I won't book a UK holiday again!

What it does highlight though is how much we are at the mercy of the weather, too hot, too dry, too wet, too cold!

It all adds up to daily challenges and forms part of the long term planning that we do. We are all striving for the same things - firm, free draining greens with good drought tolerances that can produce smooth greens for as much of the year as possible.

The beauty of our industry is there are so many ways to achieve this utopia and each site has its own individual challenges. There is no 'one size fits all' answer and I never cease to be amazed by the adaptability, flexibility and problem solving skills demonstrated by greenkeepers.

I'm very pleased that Iain Macleod, Course Manager at Tain Golf Club, will become President of our Association in January at BTME and Sid Arrowsmith MG, Course Manager at Frilford Heath Golf Club, will become Vice President.

After the changes voted through at the 2015 AGM, it was imperative the Board made the right choices to fill the two positions and I feel that with feedback from the regional boards we have met that brief, and I know they will both represent the Association with distinction.



"We are at the mercy of the weather, too hot, too dry, too wet, too cold!"

As the summer draws to a close, and the leaves start to drop, BTME starts to move its way up the priority ladder.

For the team at HQ it has been at the top of the ladder since the last day of this year's event and it is a 12 month project to ensure its success.

2016 will see us return to a five hall show, and the inclusion of GolfBIC will further strengthen our position as the best turf maintenance exhibition and education conference in Europe.

The dates for your diaries are 17-21 January 2016 encompassing Continue to Learn and BTME, I look forward to seeing as many of you there as possible.

A group of members are planning a walk in aid of the Greenkeepers Benevolent Fund from Sheffield to BIGGA HQ, a distance of approximately 50 miles.

I am planning on joining them for some of the journey to offer moral support and encouragement.

Please head to <https://www.justgiving.com/david-collins20> and make a

contribution to this worthy cause, no matter how small every little helps.

My final word this month is linked to a posting on the BIGGA Bulletin Board by one of our members, John Ross MG. The subject was asbestos and the potential risk to health.

I would like to publicly thank John for raising this issue that many could be unaware of. I lost my dad four years ago to an asbestos related lung disease, it was caused by exposure many decades before and I would not want anyone's family to go through what we did. If this helps save one family from the distress of dealing with the dangers of asbestos it will be worth it.

Let's hope we have a nice warm sunny end to the summer before the onset of winter.

Les

Contact details

Les Howkins MG
Email: chairman@bigga.co.uk

Funding your future

The funding and assistance provided by BIGGA Partners and BIGGA Education Supporters underpins the Association's considerable investment in Continuing Professional Development and all our educational activity. They are investing in the future of BIGGA members, we are hugely grateful and urge you to show them your support



JOHN DEERE



Bayer CropScience



Individual Contributors: Steven Tierney MG, Chris Lomas MG, Andrew Campbell MG CGCS, W J Rogers, Espen Bergmann, Nick Gray, Steve Dixon, Richard McGlynn, Douglas Duguid, Jaey Goodchild, Michael Beaton, David Barker, Greg Evans, Frank Newberry



BIGGA PRESIDENTS ELECT CONFIRMED

Congratulations to Iain Macleod, Course Manager at Tain Golf Club, who has accepted the role of BIGGA President Elect ahead of officially becoming President next January.

The Association's new Governance structure, which was unanimously voted through earlier this year, has led to the creation of the role of President Elect before Iain takes on the updated role of President.

This move means Sir Michael Bonallack OBE, who has served as BIGGA President with great distinction, will become BIGGA Patron in January. Iain also joins the BIGGA Board of Management with immediate effect.

Iain has been a greenkeeper since he left school in 1972, beginning as an apprentice at Nairn Golf Club then moving to a nine-hole course in Coventry formerly known as The Grange Golf Club. He returned to his native Highlands in 1976 at Tain initially as Deputy before becoming Course Manager two years later.

Tain, which is a traditional links course designed by Old Tom Morris, has hosted many prestigious tournaments and events during Iain's time at the helm including the County Championship, North of Scotland Strokeplay, Scottish Ladies and Scottish Girls events plus many more. The course is cared for by three full-time greenkeepers including Iain plus two part-time greenkeepers who join the team in the summer.

He has served on BIGGA committees for decades, firstly on the Scotland North Section, including time as Chairman and Secretary/Treasurer. He also served on the Scottish Board notably as Education Officer, and was on the main Board of Management from 2002 to 2007.



He said: "It's a great honour and quite unexpected. I've been involved in BIGGA since the very start, and moving forward it's become a more professional and well-organised Association, and I want to help us continue along that road."

"I'm looking forward to working alongside the Chairman and Chief Executive and also being part of the Board of Management. I also have the 100% backing of the committee at Tain and I would like to thank them and everyone at the club for their continuing support."

He has always been particularly committed to greenkeeper education, is part of the current Scottish Region Education Committee and has

travelled regularly to America for the GCSAA Conference.

A talented golfer with a current handicap of seven, he is a dedicated family man with two sons involved in golf, is a grandfather and also a Leeds United fan.

BIGGA Chairman Les Howkins MG, Course Manager at The Richmond Golf Club, said: "The position of BIGGA President is a key role awarded by the Board of Management to a member for their service to the Association, their high standing and experience in the greenkeeping industry and the huge respect they are held in."

"No-one embodies this more than Iain Macleod, who has epitomised what the

Association is all about during his long and distinguished service at a stunning golf course in the Highlands.

"He is an extremely familiar face not just in Scotland, but across the UK and beyond through his enormous contributions to BIGGA since its inception.

"I'm very much looking forward to attending various events alongside him, and also know his vast experience and ideas will be a vital addition to the Board of Management."

"I would also like to warmly thank Sir Michael for his superb contribution to the Association during his time as President and I know he is looking forward to continuing as Patron."

"The new Governance structure safeguards the future of the Association while ensuring it takes a more modern, consistent and transparent approach at all levels."

As President Elect, Iain will represent BIGGA at various events, industry gatherings and will promote the Association within golf and greenkeeping.



Sid Arrowsmith MG, Course Manager at Frilford Heath Golf Club, has accepted the offer to become BIGGA Vice President in January 2016. He will succeed Iain as President in 2017

BTME 2016 TO BE ONE OF THE BIGGEST YET

BTME 2016 next January is shaping up to be one of the biggest yet as the industry looks forward to the annual new year gathering in Harrogate – and pre-registration for the exhibition is open at www.btme.org.uk!

Organisers BIGGA have listened to visitor research and exhibitor feedback and updated BTME's hours with the exhibition now open from 8.30am-5pm on Tuesday 19 January 2016, 8.30am-5.30pm on Wednesday and 8.30am-2.30pm on Thursday.

The exhibition covers five Halls with Hall Q of the Harrogate International Centre complementing the other four Halls which will again be packed with exhibitors from every corner of the turf management industry.

This year also sees a momentous partnership with the Golf Business & Industry Convention (GolfBIC) presented by the UK Golf Course Owners Association (UKGCOA) and the Organisation of Golf & Range Operators (OGRO). This is a well-established and popular annual event attracting top presenters and a wide range of delegates from every corner of the golf industry.

Previous GolfBIC events have covered a diverse range of subjects from social media in the golf industry to recruiting golf professionals, and have included in-depth panel discussions on crucial industry issues. A centrepiece of GolfBIC has traditionally been the networking dinner and it is intended to hold this on the Wednesday evening.

BTME will again feature the best education the turf management industry has to offer with another range of fantastic speakers gearing up to present at Continue to Learn 2016, which runs from Sunday 17 January to Wednesday 20 January.

Last year's programme broke all records, delivering 215 hours of education to nearly 3,000 delegates, and hopes are high of exceeding these numbers again.



An unrivalled range of workshops, session and seminars are planned with speakers including Beth Guertal, Professor of Turfgrass Management and Soil Fertility at Auburn University, Dr John Kaminski, Turfgrass Management Professor from Penn State University and Mike O'Keefe, Global Placement Manager at Ohio State University – plus dozens more.

Continue to Learn again incorporates the increasingly popular Turf Managers Conference, which has outgrown its original venue of the Crown Hotel and will be held in the HIC's Royal Hall. For the first time, Continue to Learn will also feature a half day educational conference in association with the IOG focusing on groundsmanship related content. The full programme will be released in October so keep an eye on the BIGGA website www.bigga.org.uk and www.btme.org.uk for booking details.

The social scene in Harrogate is also bound to be buzzing with the Welcome Celebration sponsored by BIGGA Partner Jacobsen toasting the achievements of

BIGGA members over the past 12 months. This will be held in the Royal Hall on the Tuesday evening and will feature the unveiling of the winners of the inaugural BIGGA Awards.

The three categories are BIGGA Young Greenkeeper of the Year sponsored by Jacobsen, the BIGGA Greenkeeping Achievement of the Year sponsored by Pitchcare and BIGGA Championship Greenkeeping Performance of the Year. You still have until 30 September to nominate a deserving winner at <https://www.surveymonkey.com/r/BIGGAawards2015>

BIGGA CEO Jim Croxton said: "We're hugely excited about BTME 2016 as thoughts turn to our flagship annual event. We're particularly delighted to be hosting GolfBIC and this is another signal of our clear intentions to drive more and more of the industry's key decision makers to Harrogate."

"This means thousands of influential figures from across the turf management industry will fill the Halls throughout the week ensuring high quality enquiries and conversations for our exhibitors.

"Hall Q is open for the first time in several years to accommodate more and more visitors and exhibitors. The change in opening hours is in response to visitor and exhibitor feedback. There is so much going on during the week that we need to strike the correct balance between the exhibition, education and networking and these new hours reflect that."

"The Continue to Learn programme has gained a fantastic reputation within the industry and we're again intending for it to cater for all levels of greenkeeper. We're thrilled our friends at the IOG are working with us to provide a groundsmanship focused element this year which reinforces our aim to ensure a huge range of delegates from across all facets of the turf management industry."

"I'm already looking forward to seeing our exhibitors, members and all of our friends from across the industry at BTME 2016."

Pre-register now at...www.btme.org.uk to save queuing when you arrive. You can also visit our dedicated BTME website www.btme.org.uk and for the first time, follow BTME on Twitter @BIGGA_BTME

FTMI 2016: APPLY NOW!



The Future Turf Managers Initiative 2016, made possible by Jacobsen, will take place on 15-17 March 2016. You could be one of the 20 delegates selected for this fantastic opportunity with applications now open.

This event is aimed at up and coming greenkeepers who want to make the leap to Course Manager. Focusing on personal and professional development, rather than agronomy based

subjects, the FTMI programme utilises the expertise of leading Course Managers, dynamic trainers and industry experts to mentor and educate the next generation of industry leaders.

Subjects include:

- Communications
- Budgeting
- Leadership
- Team management
- CV writing and interview techniques

The ideal candidate will

show initiative, dedication to greenkeeping, a genuine interest in the industry and be actively involved in education at both a regional and a national level. They will have worked as a greenkeeper for a minimum of three years and will hold their Level 2 qualification. A nominator will be required to validate each application.

Representatives from BIGGA and Jacobsen will select the successful delegates. Only

BIGGA members can apply.

To access the application form, log in to the members area, click on the Future Turf Managers Initiative button on the left hand side of the page and then follow the link to take you to the online application process. Applications will only be taken via the online system.

The closing date for applications is 30 October 2015. If you require any further info, please email sami@bigga.co.uk

BIGGA GREENKEEPERS BENEVOLENT FUND



You can now donate to support the intrepid greenkeepers who are walking 60 miles in two days to BIGGA House in aid of the BIGGA Greenkeepers Benevolent Fund.

The team will begin at Stocksbridge in South Yorkshire on the morning of Saturday 3 October and trek to the midway point of Castleford, stopping overnight. They will then complete the walk – whatever the weather – on Sunday

4 October, arriving at BIGGA House in Aldwark, North Yorkshire.

One of the gutsy team is Wayne Lazenby, Greenkeeper at Stocksbridge & District Golf Club, and the upland heath course will be the starting point.

The greenkeepers have set a target of £1,000, and to donate please visit <https://www.justgiving.com/david-collins20>

Others in the group include Wayne's

colleague Richard Marshall, Martin Brown, Deputy Course Manager at Aldwickbury Park Golf Club, Dave Collins, Course Manager at Lickey Hills Golf Course and Mal Mitchell, Head Greenkeeper at Patshull Park Hotel Golf & Country Club.

They are also being joined by two members of the trade. Geoff Fenn will be a familiar face to many BIGGA members as he previously worked as Course Manager at Bedford & County Golf Club and is now Technical Sales Manager for Countrywide.

The final member of the seven-strong team is Ryan Anderton, Business Development Manager at Highspeed Group.

The walkers will be setting off at 6.30am on both mornings, hopefully arriving at BIGGA House mid-afternoon on the Sunday.

The team are also planning on heading north parading photos of BIGGA Chairman Les Howkins MG as part of the #takeleswithyou campaign which has made such an impact on social media.

There is still time for members to join the lads on the walk, and CPD credits may be available!

Please contact BIGGA House for more details.



Toro® Lynx™ Control System

Sharpen your instincts

The Lynx™ Control System helps golf course managers do just that.



Now there's a faster, easier way for course managers to act on their course management decisions.

Designed to work with the Toro Golf Decoder Controller (GDC), the smart Lynx Control System software was developed to give turf managers intuitive control over what happens on a course by making all essential irrigation information readily available in one place.

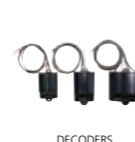
Switch to Lynx, and begin to run things your way. Call 01480 226948 or visit toro.com/lynx



CONTROL UNIT



SPRINKLERS



DECODERS



P220-G SERIES



SMARTPHONE CAPABILITY



Lely. Your partners in turfcare. Call 01480 226948.

Lely not only brings you Toro. Talk to us, too, about TYM compact tractors and Otterbine water management systems.



partners in turfcare

IRISH OPEN VOLUNTEERING

Following on from last month's article explaining the Association's steps to further our presence in Northern Ireland, GI spoke to Martin Brown, Deputy Course Manager at Aldwickbury Park Golf Club, about his experience volunteering at The Irish Open at Royal County Down Golf Club

The first time I heard about Royal County Down Golf Club was when I asked BIGGA CEO Jim Croxton his opinion about the most picturesque golf courses he'd visited. One of the courses he mentioned was this one so I did a little research and discovered it was hosting the Irish Open this year.

I met Jim again at BTME 2015 and asked him for suggestions on how I might apply to join the volunteer support team at the Irish Open. Jim passed on the details of Course Manager Eamonn Crawford, so I spoke to Eamonn and emailed him my CV. He then contacted me offering me a place on the volunteer support team – I was over the moon!

I arranged to share a car with two greenkeepers from Rye Golf Club – Ben Wright and Geoff Glazier – who had also secured a spot on the support team. After arriving at George Best Airport we made our way to Royal County Down by car. This was the start of the teamwork, Geoff drove the car and Ben and I sat back and took in the scenery!

On arriving we sat down for something to eat and met all the greenkeeping team, including some good friends of mine – Lars Knuda Knutson from Sweden and Gordon McFadyen from Scotland. The home greenkeeping team could not have been any more welcoming and I knew we were in for a great working week together.

Royal County Down consists of two stunning 18-hole links golf courses, is situated in the town of Newcastle and overlooks Dundrum Bay.

On the first morning we were up at 3.40am but I didn't mind, I was buzzing with tournament enthusiasm. It is a feeling that's hard to replicate. Volunteering



at competitions means you are on new ground every time but you soon get to know the course, learn new skills from teams who are used to different grass species, make new friends and reconnect with old ones.

Eamonn's team talk was very motivational, you could see his passion come through in what he was saying and made us all want to do the very best we could to showcase the course.

My first task was cutting tees with Brendy Brown. I was very nervous, working in the Open team is a big responsibility, but Brendy soon calmed my nerves mainly with some great jokes! After what felt like no time at all we had finished the morning shift and we were taking our break.

I thought I should get to know my surroundings as soon as possible so I set off exploring.

The view was spectacular, everything Jim said and more! The atmosphere around the town was buzzing. The Newcastle locals were very accommodating to all of us visitors and they were happy to see so many people flocking to the great little sea town.

Back to work at 4pm and I met Dean Brock who is Honorary Secretary of the Golf Course Superintendents Association of Ireland (GCSAI). We got talking about the associations, other greenkeepers joined in and started asking questions about BIGGA and GCSAI.

We got talking about all the benefits that come with being a part of the associations and how the support network is invaluable for greenkeepers at all levels. It was then back to work, because of course there is

so much to be done in the build up to such a big event.

Of course I found a few differences to preparing a parkland like Aldwickbury Park and preparing a links, apart from the different grass species. The big difference I found was using hand mowers rather than triples – tees, greens and approaches were all hand cut. Obviously the height of cut was different too.

With no trees to shelter the course from the winds like a parkland, they had to make constant decisions about height of cut and whether to cut or not.

On the final day I put my name down to rake the bunkers for the professionals in addition to the course prep and I was given the second to last group.

If you have ever done volunteering before you will know that feeling of being inside the ropes with the players, and for anyone who hasn't, it's like walking on cloud nine! My group played very well considering the 40mph winds and rain showers, but it wasn't to be for them.

The tournament was decided by a three-way play-off (just like The Open would be a few weeks later) between Soren Kjeldsen, Eddie Pepperell and Bernd Wiesberger, with Kjeldsen's birdie on the first play-off hole meaning he clinched the trophy. I saw it close up and it was fantastic. The 18th is a par five and Kjeldsen made the green in two, then he two putted from 25 feet.

Then it was time to relax after an exhilarating, hard week. The entire team had a farewell meal and a few drinks together. That team know how to celebrate that's for sure!

What an experience. Thank you to the entire team at Royal County Down who made me feel so welcome, part of the team and included me in everything during the week. A special thank you to Eamonn Crawford for the opportunity, he was so calm during the intense week and I found him an inspiring character. I hope to go back to Royal County Down one day!



MYSTERY OPM MOTHS THREATEN EPPING FOREST AND ESSEX

Despite EU Plant Passports since March 2008 and Defra inspection of imports since January 2013 OPM (oak processionary moth) is still getting through as eggs on oak tree planting material from EU countries.

During spring/summer 2014 one tree from a consignment of 8-10m tall semi-mature oak trees imported from a plant nursery in Europe and planted in 2013 at the Olympic Park in Stratford (London Borough of Newham) in East London was notified as infested to the Forestry Commission (FC).

You can't fault FC for allaying public fears. They said a Statutory Plant Health Notice (SPHN) was issued and the infested tree destroyed within a week of notification and before any adult moths had time to exit the nest. Surveys of all potential host trees within a 2km radius found no further evidence of OPM infestation, said the report.

So why was 'mystery' male OPM moths secured in pheromone traps deployed in the London Borough of Newham and the neighbouring Boroughs of Hackney, Waltham Forest and Redbridge later that summer in 2014?

Male moths can fly up to 20km although

typical flight distances recorded in UK appear much less, making it unlikely moths trapped in East London came from the main west London infestation. It would appear the moths had come from the nest identified in the Olympic Park at Stratford, or from unidentified nests on oak trees nearby.

This was essentially confirmed when FC released a map (7 August 2015) showing location and distribution of OPM nests found in spring and summer 2015. Nests were found on oak trees in the London Borough of Newham and neighbouring boroughs of Hackney, Tower Hamlets and Waltham Forest.

Any fall-out from the 'single' OPM infested tree at the Olympic Park, or other infested trees nearby and missed during the initial inspection, will present a serious risk to the half dozen golf courses located around Epping Forest which could end up facing the same perennial OPM threat as courses near Richmond Park have done for the last five years.

Greenkeepers should keep a careful eye on the situation by inspecting oak trees for larvae and nests in spring/summer 2016 and deploying pheromone traps in late

summer/autumn 2016. Pheromone traps are relatively cheap to buy and not difficult to use.

FC says female moths are flying no more than 300m after exiting the nest although average annual spread of about 750m since 2006 indicates actual flight distances of egg laying female moths at least double that figure. Distribution of nests found in spring/summer 2015 shows OPM now spreading more rapidly. Maximum spread from the outer edge of the 2014 infestation virtually matches the 5km flight capability of egg-laying female moths recorded in Europe.

London Boroughs recording nests for the first time in 2015 include: Waltham Forest, Hackney, Tower Hamlets, Camden, Barnet, Southwark, Lambeth and Sutton. OPM nests have now been found in 25 out of London's 32 boroughs and the breeding population spans the entire width of the capital from Hillingdon in the west to Bromley in the east. Nests have also found for the first time in the Epsom and Ewell district of Surrey making three districts in the county now infested.

Dr Terry Mabbett

FAREWELL PETER NEGUS

Peter Negus bid a fond farewell to Willingdon Golf Club after 38 years as the club organised a special golf match in his honour.

Course Managers tend to stay for a while at the glorious East Sussex course – Peter’s predecessor Sam Hazelden had been in situ for 40 years until Peter took over in 1977.

Peter started his career in greenkeeping at Burnham Beeches Golf Club learning the skills under the watchful eye of Brian Payne, a very respected greenkeeper in Buckinghamshire. He moved from the beeches of Buckinghamshire to the beaches of Sussex in 1977.

During this time Peter has been a committed member of BIGGA, been heavily involved with Plumpton College and the Greenkeepers Training Committee and has been an NVQ Assessor and Internal Verifier for the GTC.

He has always been passionate about training for the future generation of professionals.

In 1987 he was the first greenkeeper to be awarded the “Greenkeeper of the Year” title by the Sussex Professional Golf Union and he was equally proud when in 2013 one of his team, Luke Turner, was awarded Toro Student Greenkeeper of the Year.

Due to Peter’s training several of his previous greenkeeper colleagues are now in various management positions across different sports in Sussex. Peter’s attention to detail, enthusiasm and sheer hard work, values which he passes on to his team, have ensured that the Alistair Mackenzie course is now without doubt one of the best kept courses in Sussex attracting envy and admiration from visitors.

Peter will be succeeded by Richard Clarke. Richard started his greenkeeping



Peter Negus (right) with his successor Richard Clarke

training at Royal Eastbourne Golf Club, before progressing to Walton Heath and Highwoods Golf clubs and Gulf Harbour Country Club in New Zealand. During 2007 he was an Assistant Greenkeeper at Wentworth.

When a position became available at Willingdon during the same year he returned to his roots and spent three years under Peter’s tutelage gaining NVQ Level 2 in Greenkeeping Sports Turf Management. He left Willingdon in January 2011 to take up the position of Deputy Course Superintendent at Huapai Golf Club in New Zealand.

However, when learning that his ‘old’ mentor, Peter would be retiring, Richard applied for the position of Course Manager

and Willingdon are delighted that the traditions and practices that Peter has carried on for the last 38 years will continue.

A farewell match was held between Peter’s team of past greenkeepers, suppliers and friends against the Club Secretary, Jacquie Packham’s, team of past Club Chairman, Captains, Club Champions and other Willingdon members.

In a very closely fought contest the Secretary’s team triumphed 6&5. After the match the club held a small reception and presentation to Peter in recognition of his past 38 years at the Club.

Everyone at BIGGA wishes Peter well in his retirement.

NICK PARK MEMORIAL TOURNAMENT

The second Nick Park Memorial Golf Tournament will be played on Tuesday 29 September at Temple Golf Club.

New Course Manager and BIGGA member Ben Kebby is waiting to welcome players to this unique event, which is a Restricted Ball Stableford Tournament.

It will be full handicap, played in three balls, with a Shotgun Start at 1.30pm.

The course will be played, as near as possible, from the original Willie Park jnr tees and thus be approximately 5,500 yards in length.

Competitors will play with specially manufactured restricted distance golf balls

which have been tested by Dr Steve Otto Director of Research for The R&A, and they will receive three balls on arrival (additional ammunition will be available at £4 each!).

A snack lunch will be served from 12.00 and the round will be followed by supper and prizegiving (jacket and tie).

The entry fee is £55 which should be made payable to:

Temple Holdings Ltd and returned to Malcolm Peake, Tournament Administrator for the Nick Park Memorial Tournament, The Boat House, Abney Court Drive, Bourne End SL8 5DL.

HEALTH AND SAFETY EVENT

The BIGGA Midland Section are hosting a free Health & Safety event at Gaudet Luce Golf Club on 7 October.

BIGGA CEO Jim Croxton will present ‘The future of greenkeeping in the UK’ before Howard Swan and Jon Allbutt look at safety aspects of course design and in health and safety.

There will also be an interactive element to the day with delegates holding a mock accident investigation.

The day begins at 8am – attendance is free but spaces are limited so please book early to avoid disappointment. To book email Andrew Laing, Midland Section Education at andrew.laing@gaudet-luce.co.uk or call him on 07870 188619.

THOMAS ‘TAM’ BRANNAN



It is with much sadness that we announce the death of Thomas ‘Tam’ Brannan on 10 August aged 47. Tom was a founder Director of Greentech Sportsturf Ltd and had been fighting cancer since the beginning of the year. He faced the challenge of his cancer in the same way he faced his life and work - with bravery, optimism and a sense of humour.

Tom spent all of his working career in the turf industry, starting his career as an Apprentice Greenkeeper at Ratho Park Golf Club.

This involved getting up at 3.30am, getting three buses then a three mile walk

to work but he loved the job and learned his trade there.

After four years, he was promoted to Deputy Head Greenkeeper. During his time at Ratho Park, he attended Oatridge Agricultural College and was apprentice of the year three years running.

Being a natural salesman, he then moved on to work as Territory Manager with Souter of Stirling where he worked for nine years.

He left in 1998 to set up his own business Greentech Sportsturf with fellow Directors Hugh Murray and Kevin Brunton and Office Manager Jane Smith.

Over the years, he made many friends in the industry and was well loved and respected. His knowledge of the turfcare industry was extensive and if he did not know the answer, he would do everything he could to find it out. He was creative and always on the lookout for new products, especially on his business trips to the Golf Industry Show in the United States.

He is survived by his wife Jana and three children - Chloe, Erin and Lewis. He will be sadly missed but fondly remembered by his family, friends, colleagues, customers and business associates.

PRESENTATION COURSE AT HOCKLEY

A recent presentation course at Hockley Golf Club was a huge success and very well-received by a wide range of ten who attended.

The host was Michael Astrop, a familiar face from the Continue to Learn programme at BTME, who is again educating at BTME 2016, and he was described as a brilliant and very entertaining presenter.

All ten delegates had to present to the group on a hobby or interest for five minutes at the end of the day. The subjects included football, the recipe for sausage pasta, gardening, photography and a few work greenkeeping related subjects.

Tracey Walker, BIGGA’s South West & South Wales Regional Administrator, supported the day and said: “The guys at the end were buzzing! All in all it was a great success and I’ve received some very positive feedback.”





AMANDA INTERVIEWS KERR ROWAN

This month Amanda Dorans from Dundonald Links speaks to BIGGA member Kerr Rowan, Head Greenkeeper at Hills Golf Club in Sweden.

AD: Hi Kerr, thank you for agreeing to give us an insight to your career and of course your new life in Sweden.

KR: No problem. I think this is a great feature of the magazine.

AD: Where did you grow up and what influenced you to choose a career in greenkeeping?

KR: I was born into a golfing family. My mum and dad were the clubmaster and clubmistress at Royal Troon when I was born, so I guess a career in golf was always on the cards after that. I wasn't good enough to turn pro but I love golf and being outdoors so greenkeeping was an obvious choice.

AD: Has the industry changed much since starting out?

KR: Very much so. Technology has hugely changed the machinery we use and how we collect/record data. The education

is also far better. I thought BTME was excellent this year and I will bring a few Swedes across next year so they can see for themselves.

AD: What is your golf handicap and do you get to play much?

KR: It's probably single figures but I don't play nearly enough, which annoys me. I believe it is important for greenkeepers to play their own course, a good chef wouldn't serve you food they hadn't tried themselves!

AD: Have you had any tournament experience and if so, what are the highs and lows of working in tournaments?

KR: I've been fortunate enough to work at all four majors and the Ryder Cup. For me it is a great learning experience and the chance to meet new people. There aren't many lows but the clean up after an event is tough work.

AD: How many hours do you work in your average working week and what would your usual responsibilities be?

KR: In the summer it's probably a minimum of 50 hours. We have a staff of around 20, so making sure everything runs

smoothly is my main responsibility. In the winter we are down to a staff of four so the hours and intensity is less.

AD: How was your first winter in Sweden and how does it differ to the UK?

KR: I've been told it was a mild winter and I had it easy! It's pretty similar to the UK, keeping alert for small working/spraying windows has worked well for us.

AD: Do you still benefit from your BIGGA Membership now that you are an International Member?

KR: I still regularly go onto the Bulletin Boards for information and advice. I think we have a fantastic industry when it comes things like that. There is also a fight with the British guys to be first to get their hands on Greenkeeper international when it comes through the door each month.

Great, thanks Kerr, glad to hear that you have settled in well and enjoying your new role – looking forward to hearing more about it at BTME 2016! Good luck for the rest of season and I hope that this winter won't be too harsh!

IAN ON TARGET AGAIN



BIGGA member Ian Chenery (above centre) has been on target again after winning another National title in shooting.

We featured Ian's exploits in GI May after he scooped a National title and was also selected to represent Great Britain.

Now Ian, Course Manager at Woodbury Park Golf & Country Club in Devon, has triumphed in the Great Britain F Class Long range challenge over a weekend of tough competition, with targets set at 1000 and 1100 yards away.

He clinched this title by – in shooting terms – a wide margin of 11 points over two days of exciting shooting at Bisley Ranges in Surrey.

He said: "This discipline is the longest range we shoot, the only time we shoot further than 1000 yards. Basically, we choose to do it

because it's difficult!

"There were 60 competitors including guys from as far afield as Ukraine and Italy. It was another tough contest with the wind not as strong as during our previous competition but still enough to really make you think."

Ian is heading to Canada in 2017 to represent GB in the World Championships and spends many weekends playing in National League competitions.

He remains on the lookout for possible sponsorship, and is also keen to speak to golf courses close to Oldham, Bisley and Blair Athol who may be able to help him out with accommodation before training and tournaments. He can be contacted at ichenery@woodburypark.co.uk



SHARP SHOOTER PHIL

BIGGA member Phil Rowbottom, Course Manager at Woolley Park Golf Club, has just returned from a trip to the States where he proudly represented Great Britain at the clay pigeon shooting World Championships.

Dead-eye Yorkshireman Phil has been a key figure in the sport in the UK for many years, and is a former England captain.

After an impressive performance in qualifiers he was selected to represent GB for the first time this year.

So he packed his bags and headed off to Minnesota to join up with the rest of the team at the World FITASC Championships. Although Great Britain narrowly missed out on the medals, Phil himself finished a hugely creditable 51st out of hundreds of competitors.

Phil said: "It was a great week, very intense competition but very enjoyable at the same time. It was a good shoot, very high standard. A Brit won it, an Australian was second and a Spaniard was third – you meet all sorts of people from across the world."

"It was a great place to visit, although blisteringly hot, I certainly got a tan!"

Just hours after returning from the States Phil was back at the helm of Woolley Park, a proprietary club near Wakefield in West Yorkshire.

SOUTH COAST TURF CLUB

On Tuesday 21 July the second South Coast Section Turf Club was held at Southampton FC's training ground at Marchwood, Southampton.

The host for the event was Andy Gray, Grounds Manager for both the training facility/academy and the Stadium at St. Marys, located more centrally in the city.

A warm, sunny afternoon greeted the group on their arrival where Andy gave the members a detailed tour of all the playing surfaces at the facility, how they were used and by who. An in depth explanation of the build process and construction of the newly refurbished site was given, with discussions taking place regarding the maintenance procedures and practices used to maintain the surfaces at such an exceptionally high level.



JACOBSEN®



"The jewels in the crown are the **Jacobsen Eclipse 322** hybrid mowers. We have two with the 11-blade cutting cylinders for tees and surrounds and two with Jacobsen's 15-blade reels for the greens. The quality of cut with the combination of 15-blade reels and the ability to set the FOC (frequency of cut), has resulted in our greens reaching a consistently outstanding level. This technology has ensured that our greens are the best in the area."

Stephen Smith, Head Greenkeeper, Longhirst Hall Golf Club, Morpeth, Northumberland

"In summer we are literally a grass factory. We have wide, open fairways which we maintain at 15mm. The power of the **Jacobsen Fairway 405** engine is superior to competitor's equivalent mowers, especially when it comes to climbing slopes, which is obviously very important to us in this location. The quality of cut is very good and it is very comfortable for the greenkeeper."

Richard Jany, Head Greenkeeper, Golf Club Ruhpolding, Bavaria



"We are situated on a flood plain and that does mean when the grass grows, it grows profusely, so we need good equipment. Our **Jacobsen LF570** fairway mowers have cruise control, which is a great asset when we have just two and half hours to cut the fairways."

Paul Sharp, Course Manager Peterculter Golf Club, Aberdeenshire

Jacobsen has the best quality of cut by far and that helps us when it comes to combatting disease. Our **Jacobsen R311** is a good, solid machine and our **Jacobsen GP400** triplex, which we use for tees and surrounds does a perfect job for us."

Jack Rasmussen, Course Manager, Odense Golf Club, Denmark



PUTS THE COMPETITION TO BED



Class-Leading Payload Capacity, Power & Comfort

The all-new Jacobsen Truckster XD heavy-duty utility vehicle features the largest and toughest bed in the industry. With a massive 1,610 kg (3,550-lb) payload capacity and thick 12-gauge steel, the Truckster XD hauls more turf, more rocks, more sand, more of anything you need to move. That means less trips, less time and less work. Only the all-new Jacobsen Truckster XD can make easy work of your toughest jobs. Visit www.jacobsen.com or your local Jacobsen dealer to schedule a demo.

JACOBSEN®

FOR A LEGENDARY PERFORMANCE ON YOUR COURSE, CALL 01473 270000
www.jacobsen.com

Membership News

The latest news from BIGGA

Membership News - the section which updates you on the countless benefits of being a BIGGA member. We're on hand to help.

You can contact BIGGA House, our Regional Offices, our Personal Accident Helpline, Legal Assistance and our Lifestyle Counselling Helpline.

You can also save money with our BIGGA Xtra Benefits scheme. More information can be found in the Members' Area of the BIGGA website.



Contact Details

Tracey Maddison
General Manager
traceymaddison@bigga.co.uk

Elaine Jones
Membership Executive
elaine@bigga.co.uk

Rachael Duffy
Events & Membership Executive
rachael@bigga.co.uk

Tel: 01347 833800
(option 1 for Membership)



You can follow BIGGA on Twitter @BIGGALtd

BIGGA Regional Offices

Scotland & N. Ireland
John Young
07776 242120
johnyoung@bigga.co.uk

Northern
Sandra Raper
07866 366966
sandra@bigga.co.uk
@BIGGANorthReg

Midland
Roger Butler
07525 593 359
roger@bigga.co.uk
@BIGGAmidlandREG

South East
Clive Osgood
01737 819343
07841 948410
cliveosgood@yahoo.co.uk
@cliveosgood

South West & South Wales
Tracy Walker
07841 948110
tracy.walker@bigga.co.uk
@biggaswsw

OTHER USEFUL NUMBERS

(Full Members only)
Personal Accident Helpline
08000 516583
Greenkeepers Legal Assistance
0800 177 7891
Lifestyle Counselling Helpline
0844 770 1036
www.arlegal.co.uk/carefirst



CONFUSED? EMAIL AND ASK THE YGC!

The Young Greenkeeper Committee (YGC) is on hand to help more youthful members with all aspects of the greenkeeping industry.

With that in mind YGC member Miles Todd, who became Course Manager at Llandudno (Maesdu) Golf Club at 25, chatted to GI about the pressures younger greenkeepers sometimes feel when talking to more senior greenkeepers, and tried to answer some of the most frequent questions youthful greenkeepers may have.

'Should I ask a question?'

YES! Asking for advice is arguably the best and most direct way of learning, young greenkeepers and Course Managers alike should be doing so, regardless of age or experience!

During my relatively short time as a greenkeeper and most recently as a Course Manager I have sometimes found it hard to ask for help, advice or even pick someone's brain. This was most likely down to confidence and being slightly intimidated of more established greenkeepers, Head Greenkeepers

and Course Managers. As the old adage states, I would ask myself, is this a stupid question?

'There is no such thing as a stupid question.'

This is something I have come to realise is 100% true. Asking for advice or help should not be seen as weakness but rather a strength. Strength to learn, better yourself and improve both your knowledge and course.

You will always come across a question you don't have the answer to or an experience you

have never faced, something the textbook doesn't tell you. We've all been there or at least I certainly have, many times since becoming Course Manager. I am fairly new to the position so I don't have all the answers to all the questions or problems and more than likely never will. But there is someone out there that does have the answer and will be more than willing to help. It could be your old boss, the Course Manager down the road or someone you met at BTME.

For every situation there is someone within the industry that has experienced your current situation or problem and has the answers you need to deal with it. Use other people's knowledge to help you, so pick up the phone, get on the computer or call in to have a chat and ask.

From my personal experience I have worried about situations and tried to tackle them on my own without asking for help or advice, possibly because I am too headstrong which comes naturally when you're younger.

Once I finally got on the phone and asked the question, received the answer and implemented it, I wished I had asked it a lot earlier as it would have saved a lot of pressure and stress.

As greenkeepers we strive to make our courses - and ourselves - the best we can. The strength and depth of knowledge about in this industry will never fail to amaze me, most of which is only a question away. Through continuing to help each other the standards we set will get better and better.

'Will someone else have experienced this same issue?'

It's not just about asking questions, having a good chat with a fellow greenkeeper is a great way to de-stress. When I speak to a fellow greenkeeper about a work issue or problem, probably nine times out of ten they have experienced exactly the same issue.

Of course everyone makes mistakes, they are an opportunity to learn. By sharing a mistake, we can stop a fellow greenkeeper from making the same mistake.

Then we've helped someone out, and that can only be a good thing for our industry.

Actions

Ask a Course Manager if you can visit their course and walk round, get ideas, see how they carry out their day to day maintenance or winter projects.

Ask if you can shadow them for a day see how they deal with situations with staff, machinery and members. Remember if you never ask you never get.

Social media is a great place to ask questions, gain knowledge and share ideas. Setting up groups between greenkeepers is becoming a popular trend and should be encouraged by all.

Don't be put off by asking appropriate questions online as this can open up great debates and can provide a number of solutions and ideas.

With the creation of Young Greenkeepers Committee it is now easier than ever for greenkeepers to ask advice. One of the

reasons the YGC is in place is for young greenkeepers to contact a member to share ideas, voice opinions and encourage networking.

By voicing opinions and providing ideas YGC can then take ideas forward to BIGGA to improve services for young greenkeepers. If you're too nervous to ask a question online or on the bulletin boards, contact a YGC member who will address it or post it for you.

Please do not hesitate to get in touch with any YGC member, it can be for the smallest of matters or a career defining decision we are here to help.

Greenkeeping is a family, we are here to help each other - and remember it's good to talk.

You can now contact the YGC directly on ygcc@bigga.co.uk. Simply drop them an email and a member will get back to you. Please send any suggestions, questions or issues through to us!



The Headland approach...

...not all plant health and nutrition companies are the same

The first step to solving any turfgrass problem is to identify the issues affecting it.

Next, it's essential to understand your needs and requirements before giving any advice and support.

Then, and only then, can a structured plan be built to improve plant health and turf quality.

But that's not the end.

Our support continues with weather information via 'weathercheck' - a forecasting package tailored for the turf industry and mapped to your specific location.

www.headlandamenity.com



weathercheck



Fertilisers | Wetting Agents | Biostimulants | Pesticides | Adjuvants & Spraying Aids

L&D News

The latest from the Learning and Development department at BIGGA

Learning & Development News has the latest updates on CPD and everything related to greenkeeper education

and training, supported by our BIGGA Partners, BIGGA Education Supporters and Individual Contributors –

funding your future. Contact the Learning & Development team at BIGGA House for more information.



BIGGA MEMBER WINS AWARD

Final year graduate student Simon Dexter from Grantham in Lincolnshire has won the 2015 SRUC Elmwood Student of the Year Award, which was sponsored by John Deere for the first time this year.

Simon was judged the college's best overall HND Golf Course Management student and was presented with his award certificate by Sandy Armit of local John Deere dealer The Double A Trading Company Ltd, on the college campus at Cupar in north-east Fife.

SRUC Elmwood is renowned for its leading golf training and education programmes. Simon, who is an R&A Greenkeeping Scholar and a member of BIGGA, won gift vouchers to the value of £300 for golf supplies from The Old Course shop at St Andrews Links, where he worked in 2013, 2014 and 2015 as a seasonal greenkeeper.

After working for a grounds maintenance company and as a trainee groundsman at a private school in his early 20s, Simon gained a Level 2 Sports Science qualification at Myerscough College. He then began his greenkeeping education on the Ohio State Programme in the US in 2012/2013, studying cool and warm season grass species and learning about all aspects of turf science.

He said: "After leaving school I just fell in love with working with turf. I then wanted to seek out a fresh challenge, so the Ohio State Programme was an exciting opportunity for me to progress my education and learn new skills."

"I'm now planning to return to Myerscough to take a BSc Hons degree course starting in September, and then possibly do a Masters degree on some aspect of the environment, biodiversity and sustainability. I believe there will

be some interesting opportunities relating to golf courses in this area in the future."

The college's judging panel praised Simon for his excellent standard of work submitted in all units and motivation to learn as much as he could about his chosen career, and put this into practice. The award citation added: "Simon has a great passion to progress in the industry, which came out in all his efforts, and displayed a very professional image at such a young age. He stood out as a learner who gained so much more in terms of education and personal development in his time with us."

SCHOLARSHIPS

Congratulations to Niall MacDonald of Sunningdale GC who has been awarded his Higher Education Scholarship supported by Jacobsen. He will be studying a HNC in Golf Course Management at Elmwood College.

Individual Contributors: Steven Tierney MG, Chris Lomas MG, Andrew Campbell MG CGCS, W J Rogers, Espen Bergmann, Nick Gray, Steve Dixon, Richard McGlynn, Douglas Duguid, Jaey Goodchild, Michael Beaton, David Barker, Greg Evans, Frank Newberry

Contact Details

Sami Strutt
Head of Member Development
07818 405606
sami@bigga.co.uk

Stuart Green
Head of Member Learning
stuart@bigga.co.uk
@Stuart_BIGGA

Deb Burnett
L&D Administrator
deb@bigga.co.uk

01347 833800 (option 3)
www.bigga.org.uk



EVERRIS TURF REWARDS LOYALTY SCHEME

Gavin Kinsella MG, Course Manager at Royal Mid-Surrey Golf Club has praised the Turf Rewards loyalty scheme operated by Everris and Syngenta after it enabled him to triple the number of staff taking part in the Continue to Learn education programme at BTME 2015.

Mid-Surrey Golf Club was founded in October 1892 and acquired Royal status in 1926. For a club of Royal Mid-Surrey's prestige it is important to uphold the club's excellent reputation and it is for this very reason that Gavin insists on his team of greenkeepers being fully educated to ensure best practice. Turf Rewards enables him to do just this.

Turf Rewards is a loyalty scheme for golf, sport and amenity turf managers that provides the chance to earn points from purchases and convert them into a range of valuable agronomic or educational items. Not only does it benefit the turf manager but it is also of advantage to the team, the turf, and the organisation they work for. It is also a fantastic way to maximise your budget with every purchase

Through Turf Rewards there is an extensive range of items on offer such as agronomic tools, spreaders, iPads, clothing and work wear, and educational vouchers - which is what Gavin acquired through his purchases.

Gavin combined the £500 Turf Rewards voucher with a Continue to Learn booking bundle, making it even more valuable, and it enabled nine of his greenkeeping team to attend the education programme at BTME 2015.

He said: "Turf Rewards has extended my training budget, benefitted my team and given added value to the products that I would be purchasing anyway. It makes financial sense for the club, boosts team morale and provides the greenkeeping team with a valuable commodity – training."

Gavin believes that BIGGA's partnership with Turf Rewards is a fantastic opportunity for the whole industry and it is certainly something that he will continue to make the most of in the future.

"By recognising the value of the Turf Rewards it has enabled the club to triple the number of staff taking part in the Continue to Learn education programme at BTME 2015. I will make it a priority to use our Turf Rewards for Continue to Learn in future, increasing Royal Mid-Surrey's presence at the event, enhancing the reputation of our greenkeeping team and golf club, whilst supporting both BIGGA and BTME."



BOYES OF SUMMER

Michael Boyes, BIGGA member and Assistant Golf Course Superintendent at the Trump International Golf Club in Dubai, is this year's recipient of the Ransomes Jacobsen-sponsored best student award at Myerscough College.

For the past two years, Michael has been studying for his BSc Sportsturf Science and Management degree and graduated this summer. By his own admission he was a 'late starter' entering the industry in 2005 at the age of 35.

He said: "With many of my peers half my age I have striven to progress both professionally and academically playing 'catch up' on both fronts."

"I completed my NVQ Levels II and III Greenkeeping in record time and have twice been a Regional finalist in the Toro Student Greenkeeper of the Year Award."

"I worked as Senior Greenkeeper/Spray Technician at The Grove before moving to Spain to work on Jack Nicklaus Design courses as Golf Course Supervisor."

Following that I was Assistant in Training (AIT) at Loch Lomond Golf Club. In 2013 I completed my Foundation Degree in Sportsturf and was fortunate enough to be awarded the Barenbrug Turf Award for the highest marks in my year.

"I have a thirst for knowledge and through volunteering at tour events I have been able to gain valuable experience and take advantage of the networking opportunities that this brings. I have just enrolled for the new MA Sustainable Golf Course Management, so it seems studying is in my blood!"

"I'm delighted to be the 2015 recipient of the Ransomes Jacobsen award and I'm looking forward to joining the BIGGA Future Turf Managers' Initiative next spring, which is part of winning package."

Course tutor Stewart Brown added: "Michael is an excellent student and one of our R&A Scholars."

"He has a fantastic work ethic and consistently produced work of an excellent standard."

CPD APPROVED MEMBERS THIS MONTH

Niall Gibb - Fawley Parish Council
Ashley Allpress - Roehampton Club
Colin Hutt - Basingstoke GC
Jamie Wade - The Belfry GC
Jaey Goodchild - Bowood Golf & Country Club
Leigh Powell - Hockley GC

Derek Fullerton - Murrayfield GC
Allan MacDonald - Askernish GC
Simon Torr - Bearwood Lakes GC PLC

Congratulations to Stephen Thorne of Rushmore GC for achieving Approved status TWICE this month!

EVENSPRAY EASES SPRAY DUTIES

A host of improvements to the walk-behind EvenSpray 250 from Vitax Supaturf make the new Club model a must-have for grounds professionals keen to apply fertilisers and other turf treatments accurately and economically.

Used by award-winning grounds professionals to help maintain sports and amenity areas in prime condition, UK designed and developed EvenSpray boom sprayers have transformed the application of liquids, dramatically improving operational convenience.

Already a popular addition to the pitch maintenance fleet, the 250 just got better, with the Club even easier to use and allowing greater coverage than its predecessor thanks to increased battery size.

The refashioned handlebar design provides smoother movement across the turf, while the more powerful 9Amp rechargeable battery gives the grounds team valuable extra spray time.

Repositioned, fully encased motor and tidier hose boosts streamlining on the lightweight Club and the bigger lid on the 25l tank aids refilling.

Like the 250 model, the EvenSpray Club still comes with 1.5m spray boom (1m pass), Shurflo pump, pneumatic tyres and optional spray lance.

www.supaturf.co.uk



AGRONOMIC SERVICES TEAM UP WITH WOLVES

BIGGA Education Supporters Agronomic Services Ltd are delighted to announce their joint seminar with 'Wolves'. Wayne Lumbar, Head Groundsman at Wolverhampton Wanderers FC will be opening the doors to the Molineux Stadium with the chance to enjoy an informal Q&A session on the pitch and a demonstration of the lighting rigs and spray techniques.

Jason Booth will be guest speaker representing the IOG and David Snowden of Agronomic Services Ltd will present the "Importance of Oxygen" as well as discussing the pros and cons

of foliar, granular and soil liquid feeds.

All this will be followed by the opportunity to socialise and share views with colleagues over a complimentary lunch.

"We are really looking forward to the day and want to give as many industry colleagues as possible the chance to see this wonderful Stadium and pitch steeped in football history" said David Snowden, Managing Director of Agronomic Services Ltd.

To register for the event to be held on Tuesday 20 October, please email dpsfpg@aol.com or telephone 01765 658021

DOWNLOAD BAYER TURFXPERT APP

The Bayer TurfXpert app contains high resolution photographs and detailed information on over 100 turf diseases, turf weeds and turf insect pests found in the UK and Ireland, including what they look like, where they are found and also treatment options, both chemical and cultural practices.

The App offers:

- Advice on the situation, occurrence and treatment for each turf problem
- A camera option to help identify unknown weeds or diseases
- Information on the identification, life cycle and problems caused by turf insects
- The treatment options

Through the app you can identify what weed or disease you have on your turf.

Weeds: you choose the leaf shape and the flower colour from a list of options which will then tell you what the weed is.

Diseases: you work through a list of options for the general symptoms, the foliar symptoms and the sward composition from a list of options which will then tell you what the disease is.

If you do not have the above information or are unable to identify your weed or disease, there is an 'identify' button in the bottom of the screen which you can use to take a picture of the weed or disease with your phone camera and then submit it. This is then e-mailed directly to Dr Colin Mumford from the Bayer Turf Solutions team who will then get back to you with the identity of the weed or disease and also the treatment for this.

The Bayer TurfXpert app is available as a FREE download from the App Store and the Android App on Google play.



Spread it!

Rink twin-disc topdressers help to condition the soil and assist in the breaking down of thatch.

5 models in the range include self-propelled; mounted and trailed machines with capacities up to 3.8 cubic metres (125 cubic ft) which can spread material up to 15M (49ft) wide and operate with wet or dry sand.

Find out more about our [Rink Top Dressers](#) today.

Designed for durability
Charterhouse
TURF MACHINERY

www.charterhouse-tm.co.uk | 01428 661222



Stress protection

As greenkeepers target end of season renovations, GI spoke to two experts from Bayer about ensuring speedy turf recovery after aeration

At this time of year, during end of season renovation on greens, turf stress is a big factor. And so is the risk of disease. The turf needs to be as healthy as possible so that disease threat can be mitigated, especially during late season aeration which forms part of the renovation process.

Bayer Technical Manager Dr Colin Mumford pointed out that deep aeration and hollow coring, for example, will improve gaseous exchange and enhance microbial activity, which in turn can result in the availability of nutrients and a flush of growth that can make the turf more susceptible to Microdochium patch attack (commonly referred to as Fusarium). If the turf is then smothered in top dressing, it acts as an 'insulator' creating conditions ideal for disease development. The action of aeration and cutting also places the turf under some stress and damages the turfgrass leaves, leaving individual plants exposed to infection.

He said: "There are various approaches to aeration, and there are different machines that perform the job. It's important to remember that any aeration is better than none, but there are options better suited to particular soil types. With your average machine, even if you operate it on the whole golfing green, by taking into account the number of times and the spacing between them, you will have only aerated 5% of the green.

"There are other methods available. If you use a rotating blade system or similar, the continuous rotating blades will cut through the surface to achieve 30 - 35% coverage of the surface area of the green. Organic matter is also removed and the grooves left by the machine can be backfilled with a suitable growing media in one smooth operation. So you can operate three processes at one time and you're aerating a larger surface area, although this is shallow aeration.

"If you have clay dominant soil, you'll need deeper aeration, and for this you can employ a Verti-Drain type machine. This has large tines that are up to 18 inches in length. They penetrate deeply into the soil, and you can adjust heave levels. Penetrating deeply into the soil when it's dry with heaving motions will cause fractures and fissures in the subsoil which will improve drainage and root growth, and because the roots can penetrate deeper into the soil, they can access previously unavailable nutrients.



"High pressure water is another form of aeration that can be used, whereby pressurised water is directed into the turf to open up the soil."

Colin advised that when weighing up your approach, it's important to consider the soil type and what you're trying to achieve. For sand-dominant soils, shallow aeration might be sufficient, and for heavier clay soils, deeper penetration may be required.

Colin said it's also important to ensure that you maintain optimum turf health, before, during and after aeration. "If turfgrass health is compromised, and it becomes stressed, it will be more susceptible to disease. If wet weather conditions set in, the grass can be vulnerable to Microdochium attack. Pro-active fungicide applications, before reno-

vation work starts could minimise the risk of disease outbreak and extensive turf damage.

"Applying Interface before renovation works commence will protect the turfgrass from stress and therefore mitigate disease until plants have recovered from any damage caused through the renovation process and the high risk conditions have receded."

Microdochium patch is a key disease to watch out for, and Colin advised that turf should be examined every day for any indication of the disease. "Turf managers should be looking for early signs of disease, such as patchy discolouration to the turfgrass, and as soon as these are spotted, employing an approach to prevent it taking hold.

"Where conditions are conducive to disease, such as straight after





turf aeration treatment, leaving turf that shows symptoms of a disease or turf stress for as little as five days to 'see how it goes', can result in a rampant outbreak.

"Spraying turf prior to disease symptoms being evident, in other words, preventative treatment, should be based on the environmental conditions, historical disease threat and knowledge of the turf. Curative sprays should take place as soon as any symptoms are visible."

He noted that where there are budget constraints, preventative treatments are often avoided to save spending money where there is not yet a need. However, Colin said treatment programmes must be based on a combination of weather information, visual assessments and knowledge of the playing surfaces' reaction to certain environmental conditions.

"If it's left until the disease takes hold of the turf, an eradication treatment will be necessary. This is more likely to lead to scarring which, during the winter and early spring months, will take longer to grow out."

Microdochium patch is first spotted when the turf manager sees small brown and yellow patches, and the turf looks greasy or watery, and feels slimy to the touch. These small patches enlarge rapidly, joining up, and large areas of grass die back.

"Sward composition is important here, if you have predominantly Annual Meadow Grass, the chances are you will be seeing more die back. With a Fescue or Bent mix, there may not be quite the same issue.

"What's important to remember is that members want 100% grass cover that looks attractive and plays well. More importantly, any disease can cause a dip in the canopy due to the turf dying back, which on a green can mean a poorer putting surface and can affect the roll of the ball.

"My advice is to monitor the turf, but also to keep an eye on the long-range weather forecast and act accordingly. Turf managers can't afford not to pay this attention - the weather forecast dictates so many things and is an essential tool in any maintenance routine."

He urges managers to keep surfaces as dry as possible this autumn, understanding that disease thrives in damp and wet conditions. Remove the dew from the grass leaves, daily or even several times a day, if the weather is misty or foggy.

Turf should be examined daily for any sign of disease, and action taken straight away if anything is spotted. "Early control is key. The sooner action is taken, the less likelihood of scarring on the surface."

"The beauty of Interface is that it can be used to address almost any eventuality. It has label recommendations for the control of six different turf diseases so its flexibility is tremendous.

"The combination of the two active ingredients in Interface - iprodione and trifloxystrobin - covers two different fungicide chemical classes, and therefore offers control at any stage of the disease's development."

According to Colin, Interface offers a new standard in turf protection and is proving to be an exciting addition to the Bayer turf treatment portfolio.

"The majority of fungicides only have one mode of action, while Interface is a dual action fungicide - this also means that it can also reduce the potential for disease resistance to occur."

Colin added that the industry is now reviewing and assessing how weather data can be used more effectively, enabling individuals to make more informed decisions. "With all the technical advances today, there is a greater awareness of risk factors. Bayer has a dedicated team of experts on hand, and the Turf Solutions' team are always available to discuss any issues surrounding successful turf management at any time of year.

"The team has knowledge of the playing surfaces, and can advise on a planned, integrated, approach so that managers are in a strong position for effective and efficient integrated disease control during any season."

R&D focus on Fast aeration recovery

GI also caught up with Richard Rees, R&D Fellow for professional turf for Bayer in the USA, about some recent trial work that shows applying fungicides with Stressgard Formulation Technology can help speed up turf recovery after aeration.

Aeration holes all over the green can irritate golfers, but they're a crucial part of golf course renovation, with long-term turf grass health benefits.

Richard said: "After continual wear over the summer months, from golfers and machinery, the ground is compacted and the air pockets on which the roots depend can be crushed."

According to Richard, aeration



SAFEGUARDING TURF HEALTH

On 16 and 17 September, at the STRI, the Bayer Turf Solutions team will be presenting on 'safeguarding turf health.' Trial plots include a wear trial replicating the stress a golf green is placed under from golfers and their footwear illustrating how Interface with Stressgard Formulation Technology assist the turf to cope with this stress.

INTERFACE® contains 256g/L iprodione and 16g/L trifloxystrobin. USE PLANT PROTECTION PRODUCTS SAFELY. ALWAYS READ THE LABEL AND PRODUCT INFORMATION BEFORE USE. PAY ATTENTION TO THE RISK INDICATIONS AND FOLLOW THE SAFETY PRECAUTIONS ON THE LABEL. TRIPLE RINSE CONTAINERS AT THE TIME OF USE. PUNCTURE AND INVERT TO DRY (MAPP 16060) (PCS 04882)

achieves a number of important objectives. It relieves soil compaction, it improves gaseous exchange, provides a method to improve the drainage characteristics of the soil, and it reduces or prevents the accumulation of excess thatch.

Just as crucial to turfgrass health is recovery after the aeration process. Recovery needs to happen as fast as possible.

According to Richard quick recovery after aeration is just as important as the immediate aeration benefits. "Whether it be punching and filling, or leaving the holes open, the turf has to grow back around those aeration holes and put on new roots.

"In the USA we've conducted studies into measures to speed up turfgrass recovery after aeration. We've found that fungicides containing Stressgard Formulation Technology, such as Interface, help to protect the weakened turf that gets damaged around the edges of holes, where mechanical damage is done. It also aids in the recovery of the root tissue, and the closing of the aerial parts of the plant or turf to close the holes up.

"Stressgard Formulation Technology enhances the ability of the turf fungicide Interface to deliver turf health benefits by augmenting plant physiology, and this is key to its ability to speed up the recovery of turf after aeration, to ensure a healthy sward going forward.

"It's important to speed up recovery because it means the turf will be healthier in the longer term, but it also helps to prevent a disease coming in."

US trials showed that turf density after aeration on Creeping Bentgrass treated with fungicides containing Stressgard Formulation Technology was consistently better when tested over a period of three months.

"Cool season' turf varieties you have in the UK, such as Bentgrass and Fescues, can be sensitive to stress, and this makes the plants susceptible to disease because the grass is too weak to fight it off. When the sward is stressed or injured, and can't use the instant light or is under pressure due to drought or lower moisture levels, a lot of damaging oxygen particles that are incompletely used in the plant become highly reactive against plant cell membranes and this leads to the breakdown of chlorophyll as the membranes leak."

If chlorophyll is broken down in the mature plant it's bad news but, if it's during establishment, it's particularly bad, as it means the plant doesn't have a fighting chance of survival.

"Protecting the chlorophyll is so important in grass establishment, right after aeration, because it's not in high levels within the plant at this stage. If chlorophyll is not functioning within the chloroplast, the

whole principle on which the plant is able to grow is compromised, and fast regeneration won't happen."

The plant health needs protecting, and this defence can be achieved by applying Interface, the new-generation turf fungicide from Bayer that incorporates the unique combination of Stressgard Formulation Technology.

"By applying the product, we can stop the oxidative stress to begin with because it blocks off some of the high energy light that's so damaging. And the active ingredients act like antioxidants in the plant, and this helps to regulate the enzymes which help prevent plant membrane damage."

Essentially fungicides with Stressgard Formulation Technology are formulated to protect against plant stress, to promote plant health, and this is because we know how important mitigating plant stress is to help it combat disease threats. Interface fungicide contains a combination of the active ingredients iprodione and trifloxystrobin, and co-formulants that perform specifically in unique turf stress conditions.

Trifloxystrobin can be used to assist in stress reduction on turfgrass because it reduces oxidative stress in plants, resulting in increased tolerance to UV light, and it's been proven to improve turf quality under drought stress conditions.

CHECKLIST:

- Look at turf daily and be ready to take immediate action as soon as any disease threat is spotted
- Use the long range weather forecast as a key management tool
- Use prevention rather than cure when you plan your integrated disease management programme
- Keep turf on playing surfaces as dry as possible – especially during misty and foggy periods.

StressGard Formulation Technology

Stressgard Formulation Technology has been developed over 15 years of dedicated research and development. Specifically designed for turf, it's been fine-tuned to upgrade the performance of fungicides, providing superior disease control and visibly healthier turf.

As a broad spectrum fungicide, Interface offers turf professionals control measures against the six main turf diseases. As well as its treatment of key diseases, it also helps enhance turf quality.

Richard has been involved with the development of fungicides with Stressgard Formulation Technology since the early 1990's. "It's based on some interesting technology coming out of the work we did in the 90's.

We found that if you applied a particular type of pigment in combination with an active ingredient, you got a result, in terms of turf health, that was over and above any benefits you got from any individual components applied."

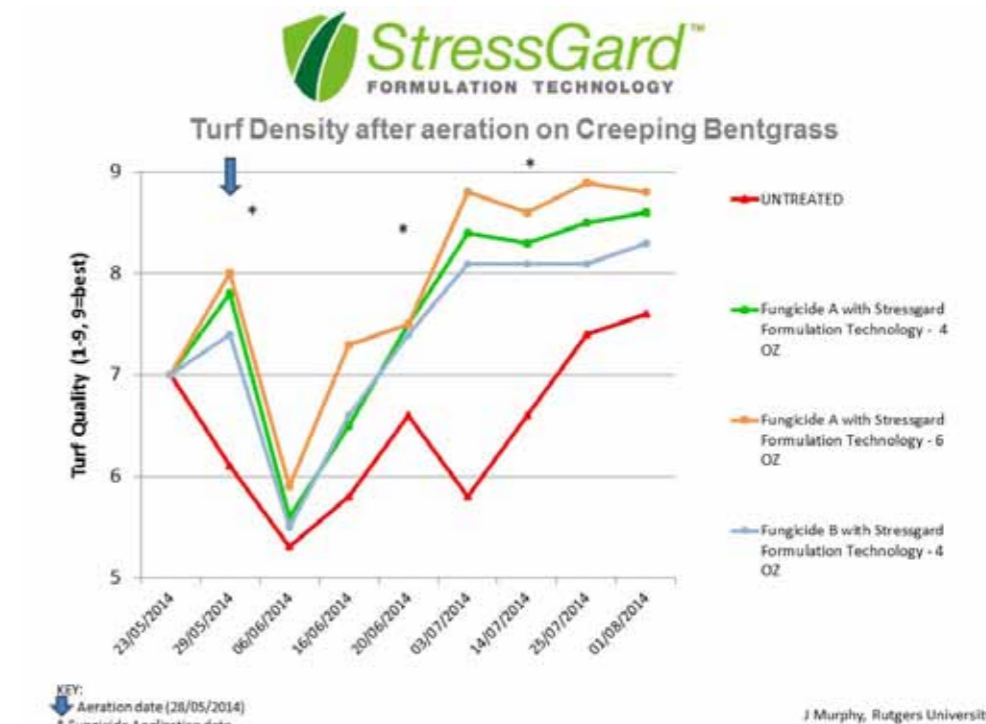
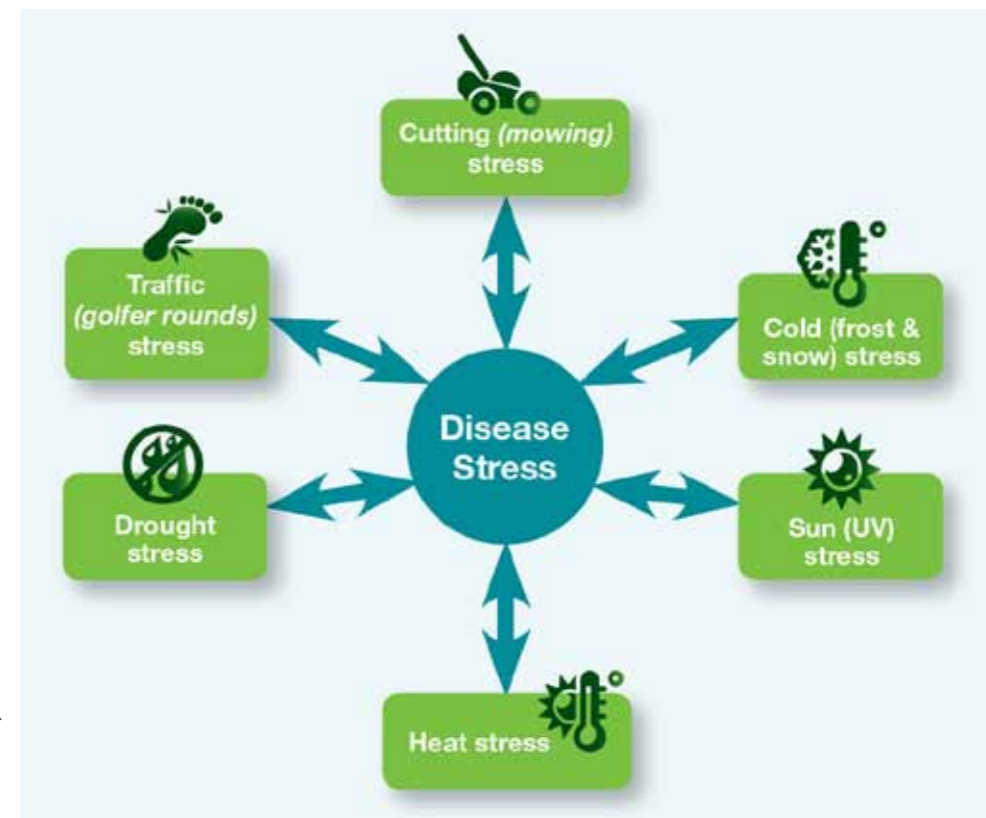
He added that you have a very strong colour enhancement that comes from two things:

1) Initially, in a short time-frame of between three and five days, the colour enhancement comes from the pigment in the product

2) Then within 12-14 days, the pigment actually maximizes the plants ability to improve the colour itself, because it boosts its own natural chlorophyll pigment.

The pigment in the product also allows for selective radiation management, because it filters out UV light and high energy wavelengths (blue light) that are excessive (in the region of 400 – 500 nanometers), but it doesn't filter out any of the beneficial red light.

Ultimately, fungicides with Stressgard Formulation Technology help reduce oxidative stress, which is very much related to the damage that excessive light can do.



Product test

Toro Procore 1298



Independent machinery writer James de Haviland gives his view of Toro's ProCore 1298 aerator as GI discovered how the machine is faring at Caldy Golf Club on Merseyside

Shallow aeration and hollow coring to depths of between 50mm to 100mm is a long established management tool in modern sports turf management.

If you opt for a wide area, there is no reason why, in addition to golf, those tasked with sports, formal and indeed amenity turf management cannot use one tool for all applications.

Sports turf aeration has evolved to the point where most now appreciate the different roles played by 'deep' aeration tools such as the Toro ProCore SR series and the shallower working ProCore 1298. Designed to work at depths up to around 100mm, but more typically in the 25mm to 75mm range, the ProCore 1298 can be fitted with a broad choice of Toro solid and hollow Titan tines, making it suitable for use pretty much from spring to late autumn.

Introduced by Toro in 2012, the ProCore family of aerators, to include the self-propelled pedestrian ProCore 648 and tractor-mounted ProCore 864, all work in the same way and essentially share the same 'modular' build.

A key feature of all models is they will leave a clean, even finish



that allows them to operate on fine turf with the absolute minimum of surface disturbance.

It is this that has enabled the pedestrian ProCore 648 to win over so many greenkeepers. Greens can be hollow tined by this highly manoeuvrable machine in the autumn or early spring and then used with solid tines to routinely aerate the greens for the rest of the year. Being able to aerate the greens without causing surface disruption makes the ProCore popular with golfers too.

The tractor-mounted variants of the ProCore work in the same way as the pedestrian model but with the potential to cover larger areas. Toro use the model number to outline its size, the ProCore 1298 having 12 tine banks and a 98-inch working width or just under 2.50m. This width is key to enabling the machine to cover a lot of ground.

This impressive performance does not come at the expense of quality of work. Thanks to the design of the ProCore's turf retainers and its ability to follow contours, the finish and work done by the wide 1298 behind a tractor will be of the same quality as the nominal 1.50m tractor-mounted ProCore 864 and 1.20m pedestrian ProCore 648.

Going wider does not compromise the job done but it does significantly improve output.

So is the ProCore 1298 just a 'wider' version of the tractor mounted 864? Yes in as much that they share the same basic design but no in that the larger machine is in effect two 648 models mounted side by side. This is a key design feature, the 1298 working in much the same way as two machines running side by side. Although both 'halves' of the machine are driven by the same heavy-duty central gearbox, each section has a separate drive and crankshaft.

In terms of specification, the three models in the ProCore line-up all offer the same tine choices and working depths. Depth setting is the same, too, which makes it easier for operators to set up different models. Clearly you need to work a pedestrian model differently to a mounted machine but the aeration element is pretty much the same.

Setting up with the tractor

Weighing in at 1044kg, the ProCore is ideally matched to a tractor with a rear linkage lift capacity in excess of 1,100kg. It can operate with a tractor fitted with either Cat I or Cat II. To ensure the tractor can

The Toro ProCore 1298 at Caldy Golf Club

Caldy Golf Club in Merseyside has had a Toro ProCore 1298 for three years. BIGGA member Carl Crocher, Course Manager, told GI how it's performing on the dry, heavy cliff-top soil.

"We are dedicated to a programme of topdressing and aeration. We've had a Toro ProCore 648 for many years but we needed a bigger machine to tackle fairways, which is why we invested in the 1298.

"We have to be on top of things all year round as the conditions here are harsh. The soil is windswept and hydrophobic, especially in the summer months when it's prone to a baking effect. We also have unusual features to consider such as medieval ridge and furrows, which give the course a corrugated and severe shape.

"The ProCore 1298 has many endearing qualities such as the fact that it's quiet and easy to attach to a tractor, but its ability to follow the challenging contours of the course has made it invaluable.

"We tend to aerate the fairways three or four times a season, but we weather watch too and if the soil is dry and we know it's going to rain we'll aerate to open up the soil, degrade the thatch and prevent water from pooling on the surface.

"The 1298 is quick and efficient. It now takes us four days to cover the fairways, which at eight and a half hectares is impressive. We do use the 1298 on the larger tees too as we find it does a good job on almost all surfaces.

"I can appreciate that a machine like this is a big initial outlay, but compared to the alternative of bringing in an operator, you soon realise it's actually cost-effective. We haven't had to spend anything on it since we bought it, there have been no breakages or maintenance costs. I would recommend only using Toro original tines though. We tried others but they simply don't last or perform as well as Toro's do."



work with the machine it is important it can safely raise and lower the ProCore, most 'compact' tractors in the nominal 50hp category requiring the addition of front ballast. To ensure consistent hole spacing it follows that the tractor needs to be able to deliver a fixed forward speed at a given engine speed too. The ProCore is designed to work with a 540rpm power take-off (pto).

The unit operated for this demonstration was mounted on a TYM T503. This Perkins-powered tractor has a nominal 50hp rating with 40hp at the pto. So pretty much on the limit power wise. Lift capacity for this model is 1,300kg too, so not much in reserve here either.

In practice, however, the combination worked absolutely fine. Fitted with a 16x16 synchromesh transmission, the TYM was operated in the lowest of its four ranges and swapped between speeds one and two to deliver a forward speed of around 1.0km/hr at a reduced engine speed of 1,900rpm. To ensure the tractor was stable when the ProCore was lifted, ten 250kg wafer weights were fitted up front. In work the combination was well balanced.

The ProCore was fitted with a four-tine head, Toro offering a three-tine

alternative as an option. For those who need to swap tines regularly, Toro can fit a Titan QuickChange holder. Instead of using the three-bolt 'clamp' of the standard holder, the QuickChange system uses a simple socket system, a special tool supplied with the machine allowing fast tine fitting and removal.

Fitted with solid needle tines working to a depth of 50mm, the ProCore was set to work in three very different areas.

First was a cricket outfield, including working the well-trodden path from the pavilion to the wicket. It was hard going, with a reduction in working depth to 25mm producing the desired light aeration.

A key requirement was to just open up the turf to facilitate the uptake of any rain and promote the flow of air in the rootzone.

Next was a move to a formal lawn formally used as a tennis court but now reserved for various functions. It is an area that takes a lot of foot-fall and prone to going brown in hot dry weather.

A few quick passes at around 30mm to evaluate the results proved all was as expected before moving onto a prime piece of hal- lowed turf. This particular piece of lawn has no access, with 'Keep

off the grass' signs. The tractor and aeration combo looked to be rather large in this setting but there were no fears putting the machine to work. In fact you would have been hard pressed to note the unit had done anything when we left. Impressive.

One of the keys features of the ProCore 1298 was noting how easy it was to adjust the working depth and swap the tines. The three-bolt clamp system may not allow as speedy a tine change as the QuickChange system but the job was hardly time consuming.

A caveat is that the operator needs to ensure the faces between the clamps and tine collars are free of debris prior to nipping up the bolts. Even a small bit of grit could upset the even tightening of the clamps.

Toro also recommends the bolts are nipped up to 30ft/lbs. This is to ensure each bolt is tightened the same amount. In practice most will get the 'feel' of securing the clamps without measuring, but those with access to a torque wrench will find the job even easier.

With grateful thanks to Radley College, Abingdon, Oxfordshire, and head groundsman Adam King.

Building Beaverbrook

A tee to green solution for one of the country's most exclusive golf clubs from Tarmac Topsport



Golf in the UK is well known as an accessible sport, with thousands of clubs dotted around the country. Whilst the nation is home to some of the most famous courses in the world, the word luxury does not always spring to mind.

However all this is set to change with the impending opening of the Beaverbrook Course at the Cherkley Court development: a £90m hotel and golf course resort designed by some of the most prestigious names in the game.

Based near Leatherhead in Surrey, and once home to Lord

Beaverbrook, Cherkley Court is set to push the boundaries of premium golf resorts.

The new resort, developed by Longshot Cherkley Court (LCC) and due to open in 2016, will be home to a £90m hotel and the prestigious 18 hole Beaverbrook golf course. Co-designed by eight-time major championship winner Tom Watson, along with renowned golf course architect David McLay Kidd (DMK), the Beaverbrook Course will offer the rare opportunity to play on a world-class surface.

One of the standout features of the Beaverbrook Course will be its

USGA-accredited greens. Achieving such a high quality putting surface is out of reach for many clubs due to the associated requirements, costs and logistics that must be adhered to in order to receive USGA accreditation.

In order to meet such demanding requirements, DMK approached Tarmac to tap into its years of expertise in golf course rootzone design and construction via its specialist Topsport solutions.

For the Beaverbrook course, a range of high performance Topsport materials were heavily involved in nearly all aspects of the course's



construction, from tees to greens, and all the green surrounds.

A crucial part of achieving USGA accreditation is ensuring the right rootzone mixture is achieved. The USGA specifies that all rootzones used for greens must be mixed offsite, and strongly recommends any potential product undergoes a rigorous quality control programme undertaken in a laboratory environment.

This ensures that any Rootzone laid will comply with the strict performance criteria laid down by the USGA recommendations and will offer the necessary agronomic

support for the seed bed and growing in process.

In order to help DMK achieve USGA accreditation for the Beaverbrook Course greens, Tarmac supplied over 12 thousand tonnes of its Topsport rootzone to be used across all of the greens, as well as the green surrounds and tee boxes.

The bespoke rootzone was designed and mixed at a dedicated off-site mixing station from high quality sand, blended with carefully selected organic materials. This allowed it to maintain organic content and pH balance, as well as providing the best possible growing medium for the three different playing surfaces.

Support for adequate drainage also had to be prioritised to provide consistent course playability throughout the year. Poorly drained greens can result in a number of serious maintenance issues, as well as having a detrimental impact on a player's round as they are much more difficult to read.

Given Beaverbrook Course's vision of unsurpassed quality, a state-of-the-art drainage solution was imperative.

Drainage gravel is a crucial element of a green's construction, and as with rootzones, must meet certain criteria in order to achieve USGA accreditation. Tarmac was again on hand to supply over six thousand tonnes of its specially designed Topsport drainage gravel to the Beaverbrook Course.

The gravel was designed to meet the performance criteria required when an intermediate gravel layer is not used in the green construction. Bridging, permeability and uniformity co-efficient criteria were all met by careful source selection, which included the ability to wash and screen to a well-defined grading profile.

The overall drainage and growing media profile can then move water rapidly away from the green's surface, ensuring available play times are maximised.

Peter Cullen, Technical Sales Manager, for Tarmac's Topsport team, was heavily involved in the specification and supply process for the Beaverbrook Course at Cherkley Court. "All construction materials supplied to the Beaverbrook Course, including the drainage gravels, the straight sands and the blended rootzone product, had to be produced to the USGA Recommendations for putting green construction; which involved an incredible amount of pre-testing and pre-production work to ensure we could meet the brief.

"One of the key challenges involved the production of the USGA rootzone. It comprises of fully classified sand produced at Kingsley quarry in Hampshire which is then blended with a specifically graded sphagnum peat.

"This resulted in a growing medium with very precise physical properties to support the very fine grasses needed to meet USGA requirements. It took probably about six months to achieve the right blend ratios to achieve the specification.

"Similarly, all gravel had to be designed to meet the Beaverbrook Course's exacting grading specification.

"This was to ensure no fine material could potentially enter and block the perforated drainage pipes, which were laid in the herringbone style and then covered with Shepperton 2/6mm of gravel, and 30cm of the rootzone, before being shaped.

"Whilst a significant amount of research and development has been undertaken to ensure only the best possible material was supplied for the Beaverbrook Course, we are extremely confident the end result will be one of the finest playing surfaces in British golf."

Casey Krahenbuhl, Senior Design Associate at DMK Golf Design and Site Manager at Beaverbrook Golf Course, added:

"Our design criteria changes from site to site, but here at Beaverbrook the developers wanted nothing less than the highest standard of greens in the country, or even in Europe.

"Fine creeping bent grass greens were the only option for us to meet this brief, and to do that we needed the very best green and tee construction possible, namely USGA Specification. Sourcing a sand and a gravel that worked for us was crucial.

"However it's not just about the product, it's also about the supply chain and dealing with vendors that we trust and believe in and that we know can be partners to the project.

"The final product was fabulous; some of the best USGA sand we've ever dealt with, really consistent and exactly what we were after. Tarmac's Topsport team has been the best partner we could ask for on the job, they've been our biggest vendor and the supply chain they've provided has been fantastic throughout."

For more information on Tarmac's range of Topsport golf course solutions, please visit: www.tarmac.com/topsport.

Woodland management focus

Joanna Chapman, Managing Director of Orange Plant, looks at woodland management strategies for greenkeepers

Depending on the type of course, trees can play an important role on a golf course. A parkland relies on trees to provide their landscape but on other courses they can provide divides between holes, definition to the hole or a point of strategic interest to aid play.

In addition to the general visual impact that woodland will provide, it can also provide ecological and environmental value. However to get the best from the trees on the course, they must be managed and to be managed effectively you need the right tools and techniques for the job at hand – be it general thinning and pruning or complete woodland or course renovation projects.

If trees are not managed effectively, they can create problems for the greenkeeper. Trees or roots that encroach beyond the wooded areas can change the characteristics of the soil – drawing moisture and nutrients away from other plants. As a general rule, greenkeepers should remember that root spread can be one and a half times the size of the canopy. When in full leaf, trees can create significant areas of shade which can impact on a grass plants ability to photosynthesize

and therefore can have a bearing on the overall health of the plant. Shade can also restrict light and airflow to areas of the course, reducing the surfaces ability to dry out following morning dew or rainfall - a contributory factor for some diseases such as Fusarium. Similar issues can occur when the leaves fall during the autumn, in addition to impairing on the look of the course.

No tree work can be undertaken during the 'nesting season', which runs from March to August. This can play to the greenkeeper's advantage as these are the months when the majority of their time is taken up by various turf maintenance activities. Conducting tree work 'in house' can be a positive for the club, with most greenkeepers happy to undertake routine tree work with minimal guidance and advice from arb machinery suppliers like Orange Plant. With over ten years of industry experience and seven depots nationwide, Orange Plant are firmly established in the hire, sale, service and support for a range of machinery including wood chippers and stump grinders.

Possibly the most common task undertaken by greenkeepers in woodland management is thinning out. Thinning out close to the wood-

land floor has been the main job for Phil Armstrong, Head Greenkeeper at Stocksfield Golf Club. The 18 hole course based in the heart of the Tyne Valley has been described as a course of two halves – the front nine over 50 acres are primarily woodland, tree-lined holes while the back nine is open parkland. The amount of trees along the playing edge mean there are a lot of low branches that require thinning back.

Phil said: "Maintaining these areas are vital for play. If a golfer were to land a ball under a tree,



Pedestrian | Road Tow | Tracked | Tractor Mounted

WE HAVE A GREAT LINE UP OF CHIPPERS FOR GOLF COURSES

Golf Course woodland management has many facets, but within the GreenMech range there will be a model to suit - all having the revolutionary Disc-Blade chipping system to provide up to 150 hours of chipping before re-sharpening. **Just one of the many features that make a British made GreenMech machine unique.**

To find out more call 01789 400044 or look up www.greenmech.co.uk

GreenMech
The Professionals' Choice

due to the amount of low hanging branches they wouldn't be able to get a clear shot out unless the branches are cleared to a certain height. Access for the golfers is our top priority, it's only right they have the maximum area to play without obstruction."

For two weeks a year during February/March Phil will trim back the problem branches and will then hire a GreenMech Arborist 150 chipper from Orange Plant to chip the waste. "Chipping works well for us. The 'chip' is sent straight back into the woodland/waste areas and is used to create pathways on two of our holes where people will walk beneath the trees."

In addition to the reusable resultant bi-product, there are many other reasons why chipping woody waste has dramatically increased in popularity. For many years now the Environmental Protection Act, along with the Clean Air Act, has considered the commercial burning of green waste inappropriate. This has therefore severely reduced the ability of using the traditional bonfire to dispose of wood waste created from the maintenance of trees and hedges.

Any commercial businesses (with the exception of farms who are allowed some limited, controlled burning) can be prosecuted if found to be in breach of any of the listed legislation. A typical fine imposed by The Environmental Agency, Local Council or Police is likely to be in the region of £2,500 – an amount that would go a long way towards the cost of hiring or even buying the correct equipment. In addition to discouraging the dumping of unnecessary material into landfill, councils will typically charge the tipper between £26 and £45 per tonne of waste. This can reach over £100 a tonne depending on the material you are disposing of.

Over at Penn Golf Club near South Staffordshire, a more

comprehensive programme of tree maintenance is underway. Penn is a heathland course with some wooded areas which are basically just neglected, overgrown heath space. They are currently six years into a ten-year Higher Level Stewardship agreement with the governing body for conservation, Natural England, to remove the woodland and revert the area back to open heathland. To date, they have felled and removed approximately 1000 trees, which has come with a few problems. Initially, with any mention of removing trees, the club faced resistance and confrontation to the plans but it was a case of explaining the end goal and getting people to notice that it was the right type of maintenance required to better the course. Once people have seen the finished results, the feedback has been positive and the work has been well received.

A task of this size has also required the use of specialist tools, one of which being a stump grinder which they have regularly hired from Orange Plant. Orange Plant is the only European partner for the highly acclaimed Carlton Range, from which the SP4012D and SP5014TRX models have been used. Using a stump grinder eliminates the need to burn, dig or treat tree stumps with chemicals. The powerful grinding teeth reduce tree stumps to ground level and below, which allows replanting or ground preparation for just about any purpose. Using these machines to remove the stump has meant the greenkeeping team can get straight on with other machinery to start preparing the land for further works. Also, some of the trees that have been felled were close to the playing line meaning the stump needed to be eliminated as quickly as possible to reduce trip and other health & safety risks.

Although the trees are removed outside of the nesting season,

the majority of the stump grinding has been done in the period of April–September, when the ground is at its driest. They have been lucky to have removed the majority of stumps on the site using the Carlton machines which have impressed the team. The team had in the past used a manual stump grinder, so using ones with a remote control has made the job a lot easier for them and has meant they can eliminate more stumps per day. The 5014TRX gained particular praise because of the tracked base which has meant they can get into all kinds of undergrowth and scrub.

GRIND IT



CHIP IT



SPLIT IT



BUY IT OR HIRE IT

ORANGE PLANT

7 depots nationwide



OP QUICK CALL

Tel: 0845 838 6337

www.orangeplant.co.uk

Autumn root recovery

syngenta.

BIGGA
partner

Root dieback in cool season grasses - i.e. those grown on most UK turf sports surfaces - would have occurred over the summer when a plant's photosynthetic activity is restricted by the hotter temperatures, but it is still actively respiring.

The plant's growth demands more carbohydrate than the leaves can physically produce during the hot weather, which leads to root mass reduction.

However, as conditions cool into September and early autumn, there is the chance for plants to recover and replace lost rooting and essential carbohydrate reserves. The frequency of late 'Indian Summers' experienced in the UK over recent seasons has increased opportunities to beneficially boost autumn root recovery.

Root growth is a constantly ongoing cycle in healthy turf; new root material is created, as old root dies and degrades. It is an essential process, since new root growth is especially efficient at absorbing water and nutrients, but that ability reduces as it gets older. The rate of decline and replacement is influenced by climatic and soil conditions.

In most conditions root growth in cool season grasses occurs at

soil temperatures of 10C-18C, compared to 15-24C optimal for leaf growth. In the autumn, root growth will continue, even after leaf growth slows or even stops.

Promoting autumn root mass recovery is important to support the health of the plant, to take up water and nutrients, build up essential carbohydrate reserves and enable turf to withstand winter stress factors. Agronomy measures to encourage root recovery can help to maintain better winter surface quality - and year round turf health.

Primo Maxx trials, for example, have shown that stimulating greater root mass and carbohydrate reserves in the early autumn, can be extremely effective in reducing the incidence and impact of Microdochium (Fusarium) Patch turf disease over the winter.

The independent trials by Bioforsk under severe Microdochium

Over the summer hot temperatures and dry conditions would have seen turf root structures suffer and seriously decline - with potential impacts on plant health and playing surface quality. Syngenta Technical Manager, Marcela Munoz, gives guidance on how to encourage autumn root recovery to compensate

disease risk conditions showed up to 70% reduction in infection over the winter on treated greens, which the researchers attributed to the higher accumulation of carbohydrates in the turf plant tissue.

Research that has shown an autumn Primo Maxx programme can be to be highly effective in raising over-winter water soluble carbohydrates. Levels of sucrose, fructose and glucose, which can be readily utilised by plants, were over 16% higher over the winter after a Primo Maxx programme, compared to untreated.

Rooting conditions

Roots also require appropriate conditions to grow, including adequate moisture, oxygen and temperature. Compacted soils can severely restrict root development, compared to a well-aerated soil structure.

Aeration through coring or hollow tining, for example, may cause limited superficial damage to existing roots, but can provide improved aerobic conditions and infiltration rates for recovery and future growth - particularly in autumn when root growth is stronger.

Providing sufficient moisture to support the root development is absolutely critical. Greater root mass develops where moisture is available retained in the root zone.

Warm late autumn temperatures and drying winds mean water can be quickly lost from the surface, through evaporation and infiltration - which makes it so important to maintain soil moisture down through the profile.

It is an urban myth that roots grow 'in search of moisture'; in good conditions the root structure will grow as big as the plant's green leaf energy generation will permit. Using Qualibra to retain soil moisture enables the plant to produce and support the required root mass.

Leaf health

Mowing height clearly has a major impact on root recovery. The tighter the turf is cut, the less leaf there is available for photosynthetic activity, and the slower roots develop. Increasing the height of cut from 3mm to 4mm on a green, for example, provides over 25% more leaf blade area.

Furthermore, Primo Maxx can increase the concentration of available chloroplasts in the leaf to enhance photosynthesis and make the most of late summer and autumn sunshine, as well as regulating water use efficiency to improve plant health (Fig 1).

Whilst the practicality will always be dictated by player demand and need for speed, where putting surface quality can be achieved from growth regulation and the use of turf iron, in conjunction with mowing height, for example, there is potential to significantly root development through the autumn.

We have also seen the importance of leaf health through this period. Any disease activity will reduce the plant's ability to effectively photosynthesise, and divert energy away from root development to fight the infection.

Proactive fungicide treatment when there is a risk of disease

infection can prevent damage, plus the use of Heritage Maxx or Headway includes azoxystrobin that has a further proven positive impact on plant health and green leaf efficiency.

Other aspects include providing appropriate nutrition to support root growth, including nitrogen and phosphate that are essential for rooting. Potassium has also been shown to be highly important for root development.

Soil analysis is important to recognize autumn needs for all nutrients and to check pH.

Historically greenkeepers have cut out autumn nitrogen application to avoid lush leaf growth susceptible to disease.

However, trials have shown that applying appropriate levels of nitrogen in the early autumn can be beneficial for root development. It is important to get the balance of input levels right.

Fast acting liquid feeds may enable turf managers to tailor application rates more accurately to growing conditions.

Employing a range of integrated turf agronomy inputs could help to proactively promote autumn root growth now, to ensure stronger, healthier plants and consistently better playing surfaces throughout the year.

Terra Rake perfects the fairways



How a relatively unassuming piece of kit has helped the greenkeepers at one of Glasgow's top clubs present its fairways to their best ever standard

The 2.1m Wiedemann Terra Rake is being credited with taming Cowglen's vast ridge and furrow contours which lie on a heavy clay soil that stretches down 3m deep in places.

The corrugated lines were made a virtue by architect James Braid in 1923 when he reconstructed the course, founded in 1906, from nine holes to 18. Recent renovations in the last two years have smoothed out three holes but the scope of undulating terrain means the greenkeeping team is constantly challenged.

Regular use of the Terra Rake since its purchase in September 2012 has seen such a steady improvement that Course Manager, Michael Slack, says he rates it "five stars plus" and is very interested to see the new 3.2 m and 4.4 m versions that Wiedemann will unveil later this season.

Michael, who is on BIGGA's West Section committee in Scotland, said: "Because of the undulations when I was looking to buy for the fairways I wanted something that would scarify the tops of the mounds but not scalp."

"The Terra Rake floats right over and doesn't damage, it just pulls out the thatch and continues on. It's worked out as absolutely the best machine – a dedicated scarifier just wouldn't have coped."

Paired with a Kubota L5030, the trailed Terra Rake frequently takes speeds of up to 15-17 kmph in its stride and can cover the fairways and practise area totalling around 10 hectares in a single morning.

"We have a consistent routine of raking, cutting and blowing the fairways or, when the ground is heavier, we rake, blow, cut and then add a final blow at the end just to keep everything tidy for members following."

"The aggressive spring tines of the Terra Rake rip out the thatch really thoroughly and it's so productive that the fairways are virtu-

ally thatch free and have never been as good."

The Cowglen greenkeeping team numbers seven in total and they have found a variety of other duties for their versatile Terra Rake which means it's in use throughout the year.

Michael explained: "At the start of spring when we cut deep rough back we follow through with the Terra Rake to pull out any brown wispy debris that's gathered over the winter. Also in spring after the first decent dry spell we'll rake out fallen leaves that have evaded us and shift them with the tines before they become embedded. Whenever we need to top dress we always use it to assist dressing the low points or the drains of the rig and furrow. It's back out if we need to stand the grass up and we've used it to break cores levelling them into the ground by repeatedly going backwards and forwards to separate the thatch from the sand and soil. It's a machine that delivers such good value for a relatively small outlay."

Wiedemann UK equipment is supplied to Cowglen by Scottish dealer Fairways GM with Area Sales Manager, Alan Jack, himself a former greenkeeper, providing support. Alan commented: "The Terra Rake just quietly gets through a mountain of work and becomes indispensable very quickly without fuss. Despite being in one of the wettest areas of the UK and having metres of clay beneath the surface, the Cowglen fairways are truly immaculate and get amazing member comments."

Cowglen is just five miles from the centre of the Glasgow and is a very progressive club. Two years ago it was granted Scottish Golf Centre Development status and currently has over 500 members.

Michael has been in charge since May 2008. Prior to that he was at Gleddoch House GC for a year as Deputy Course Manager, and served seven years at Loch Lomond GC.



WIEDENMANN TERRA SPIKE GX18 HD

Cowglen GC also owns a 15-month-old Wiedemann Terra Spike GX18 HD which aerates their greens, tees and approaches regularly.

Michael said: "We've had it from new and it also does a truly great job. The best thing for me is the symmetrical design, it's always absolutely balanced."

"The action is completely smooth and the machine is not only kind to the tractor and the operator, it's also kind to the surface and that's reflected in the result."

"We can carry out an intensive summer aeration programme using needle tines with no disruption to play."

"The golfers are happy and there is a noticeable improvement to the greens root structure."

"If we haven't a competition on and it's relatively quiet we get round all the greens and tees in a day or we'll do them in two mornings."

"We favour a 50 mm square pattern with our 8 mm tines and we vary working depths down to 250mm."

"Twice a year, probably in April and September we'll use 12 mm tines."

FAST ACTION

DISEASE CONTROL INSIDE OUT



When you need speed, Instrata stops disease fast to prevent damage to your greens and protect playing quality

Fast activity on the leaf AND in the thatch

Turf
REWARDS.com
3 x 3l = 5 points

Instrata
Fungicide

syngenta

How a passionate co-owner, together with the greenkeeping team, triggered a turnaround in fortunes for a club in South Yorkshire

AGRONOMIC SERVICES LTD Specialist in sports turf nutrition

BIGGA education supporter

At home on the Grange

Grange Park Golf Club is an 18 hole, par 71 parkland course located in Rotherham. Its Fred Hawtree design was completed in 1972 and it opened as a municipal course.

Speaking to co-owner Richard Townley, it's evident that his passion for the golf course has resulted in a huge turnaround for the Club during the last ten years. He learnt to play on the course as a boy beginning at 12 years of age on a £7 ticket, his first lessons taught by the club professional Eric Clark who is still on hand to pass on his skills today.

Grange Park also has the good fortune to work closely with Peter Cowen – one of Europe's leading golf coaches - as his Golf Academy and Driving Range is located on the original Grange Park site.

Richard has enormous enthusiasm for the game of golf and so co-owning the golf course really is a dream come true.

In 2005 new life breathed into Grange Park. Richard and his business associate Steve Gillott acquired the golf course and it emerged as a private club with a year on year investment totalling in excess of £1.3 million.

During tough economic times and when other clubs are struggling to gain new members, Grange Park is thriving and continues to grow. A busy function suite and clubhouse is well supported, due to quality entertainment and fun events. These have all contributed to the financial wellbeing of the club, which in turn means that investment in the golf course is viable.

Grange Park is also licensed as a wedding venue with its perfect setting. Weddings are now conducted at the club and the first ceremony took place in August. Celebrations

ABOVE: Richard, David and Steve discussing tournament preparation

are held in the newly erected marquee overlooking the 9th hole, with spectacular views of the Yorkshire countryside towards Sheffield and beyond.

February 2013 saw Grange Park and Agronomic Services Ltd first meet when David Snowden conducted an Educational Seminar in conjunction with BIGGA.

The event - held at Grange Park - was very well supported by BIGGA members and everyone who attended learnt more about "The Importance of Oxygen".

Following on from that day, the two decided to work together.



It became clear that the team at Grange Park really wanted to make a change and this represented a challenging period for the Head Greenkeeper Steve Pickering and his team. He and his colleagues adopted new methods including foliar feeding and together with David Snowden they have tackled several issues with very pleasing results.

The desire to take the golf course to the next level and make the overall golfing experience even better meant that Richard was keen to use Floratine Product's new technology and this is why he chose to work with David.

Richard said: "David's expertise and level of service is second to none, and he is always available at the end of the phone day and night. It's wonderful to have that support."

Soil and water samples were taken and analysed using Analync which is the most comprehensive independent testing available to the sports turf industry.

This enabled David to diagnose with accuracy specific areas that needed addressing. A road map was created for the team with the aim of improving the efficiency of the root zone and plant health and this has led to dramatic results.

One of the most significant changes to the agronomic approach has been the considerable reduction in fungicide with only one preventative spray in 12 months. The need to hollow core has also been reduced resulting in less disruption of play.

This has been achieved with the introduction of a cultural approach using new products such as Oxy Rush and Thatch Buster to combat Thatch and Black Layer combined with proactive Greenkeeping practices.

Steve has embraced the spray techniques and said: "The spray plans are easy to follow and tank mixing is simple using a number system to ensure perfect results every time." Steve's personal pride in the course and enjoyment of the job is evident.

He communicates regularly with David and a spray schedule is in place which is continually updated to fit in with the weather and needs of the club.

Steve left the mining industry to begin his career in greenkeeping and has continued to gain qualifications throughout his time working in the industry.

With this new approach Steve has taken the time to learn about foliar feeding and Floratine products and the greens are continually improving.

When you ask Richard about the secret to success at Grange Park in a time when many clubs are looking for answers he refers to a hands on approach, how he still enjoys cutting the grass alongside the rest of the greenkeeping team and how the whole family are involved in the operation.

It's clear too that Richard has a head for business and we are delighted to learn that "revenues are up by 30% on green fees since working with Agronomic Services Ltd."

Richard added: "Fantastic feedback from visiting societies also reinforces the visible results achieved since our decision to work with David."

As we come to the end of our visit three teenagers arrive on a green to hole their putts, immaculately dressed and observing true golfing etiquette.

It's clear to us that the future at Grange Park is secure for the next generation of golfers.

Another one bites the dust

In his latest BASIS article, Sherriff Amenity's Graham Paul looks at 'leatherjackets' and how greenkeepers can control them as new regulations restrict insecticide use

BASIS



Male crane fly

This spring we learnt of the loss to the Amenity market of the insecticide chlorpyrifos, currently used to prevent damage to turf on sports and recreational turf.

Chlorpyrifos, previously sold under a variety of brand names such as 'Cyren' and 'Ballad', was used to control the Crane fly larvae or 'leatherjackets' as well as Frit fly and two other minor insect turf pests classified as Bibionid flies; the St Mark's Fly and the Fever Fly. Notice of withdrawal for the amenity use of chlorpyrifos was issued on 19 May 2015, with no further use on turf after 31 August 2015. To explain this sudden decision, the UK Government's Chemical Regulation Department gave the reason that: -

"As part of the European Union's routine review programme, new human health based safety levels (known as 'end points') have been agreed for chlorpyrifos. These new end points represent the latest assessment of risk against modern regulatory standards. Where the risk assessments have identified current uses that can no longer be supported, HSE are taking the precautionary approach of restricting those uses with immediate effect".

There is no alternative insecticide treatment for leatherjackets, so control of will now require a fundamental change in management practices. In this article I will look at the biology of the Crane fly and the use of alternative biological control methods.

Crane flies belong to the family Tipulidae, which contains over 15,000 species worldwide. There are reported to be around 300 species of Crane fly in the UK alone. The most common species found causing problems in UK turf situations is *Tipula paludosa* with two other species; *T. oleracea* and *T. vernalis* encountered occasionally. Leatherjackets cause stress and damage to grass plants by feeding on the roots and stems. Extensive areas of turf can be turned yellow as a result of the grub's feeding habits and this is often made worse by secondary predators; large birds, badgers and moles, ripping up the turf in search of the grubs. Leatherjackets also feed on the roots of many other plants (ornamentals, fruit and vegetables). They are legless, grey-brown, fleshy grubs, growing to a size of up to 45mm long with tough wrinkled skins and a number of small, pointed protuberances at the tail end.

The Crane Fly is well distributed through all areas of the UK,

although certain species are better adapted to the far northern climate. They prefer damp wooded locations, streams, water margins and flooded areas and are most active during the early evening when temperatures drop. Adult Crane flies, affectionately known as the 'Daddy Long-legs', can be seen from late spring through to autumn with the majority emerging in late August and early September, depending on the weather. The female has a distinctive pointed ovipositor at the end of the abdomen, which is used to penetrate the ground during egg laying.

The life span of an adult Crane fly is relatively short, about 14 days, and in that time they must pair up and mate before the female can lay her eggs (about 300) just below the turf surface. With the right conditions of temperature and moisture, the eggs will hatch in ten to 14 days releasing the first larval stage into the soil. At first the young grubs are too small to have much effect on grass health but as time progresses they grow in size and appetite. They usually undergo two moults before the onset of winter when soil temperatures fall. At this time the larvae now in their third stage stop feeding and move deeper into the soil to survive the cold. Long periods of extremely low temperatures (< -1C) during the winter months will dramatically thin out the numbers of leatherjackets that survive into the following spring. Conversely, mild winters allow more to survive to adulthood and where we see several consecutive mild winters, the population of the Crane fly can reach alarmingly high numbers.

When soil temperatures begin to rise in the spring, the over-wintered larvae start to feed again and this is when they do most damage to turf. After the fourth larval stage is reached the hungry grubs engage in a feeding frenzy and this often coincides with the breeding season of secondary predators who, due to the much weakened grass root structure, are able to roll back the turf like a carpet to find the grubs, which make a good meal for their offspring. Very wet weather can cause local waterlogging, often bringing hundreds of larvae to the surface. Leatherjackets continue to feed during the summer and complete their life cycle when they emerge as adults shedding the brown pupal case on the surface.

Control measures

Small grassed areas infested with leatherjackets can be 'harvested' by soaking with water after sundown

BASIS

SELF ASSESSMENT

Use the questions below to check your understanding of this topic. Readers can claim BASIS points by visiting the 'BASIS Points Article' section on the Sherriff Amenity website – www.sherriff-amenity.com and answering the questions correctly.

1) Products containing chlorpyrifos should not be applied to amenity turf in the UK after ...

- a) 31 August 2015
- b) 31 August 2016
- c) 19 May 2016
- d) 31 December 2015

2) Approximately how many species of Crane fly exist worldwide?

- a) 300
- b) 3,000
- c) 15,000
- d) 15,000,000

3) How many larval stages do Crane fly undergo before reaching the pupal stage?

- a) 3
- b) 2
- c) 5
- d) 4

4) How do parasitic nematodes kill the leatherjacket larvae?

- a) They interfere with digestion systems.
- b) They release a toxic bacteria into the host grub.
- c) They cause a fatal allergic reaction that paralyses the grub.
- d) The presence of the nematode worms produces a severe, fatal immunological reaction in the host.



and then covering overnight with a material impervious to light such as black polythene. This encourages the larvae to come to the surface where they can be collected and destroyed. This method is most

effective in warm temperatures when there is sufficient soil moisture and the leatherjackets are feeding close to the surface. The covering material should be slowly peeled back in the morning to reveal

the emerged grubs. It is important not to uncover too large an area at a time for collecting purposes, as the grubs will move back into the soil when exposed to daylight.

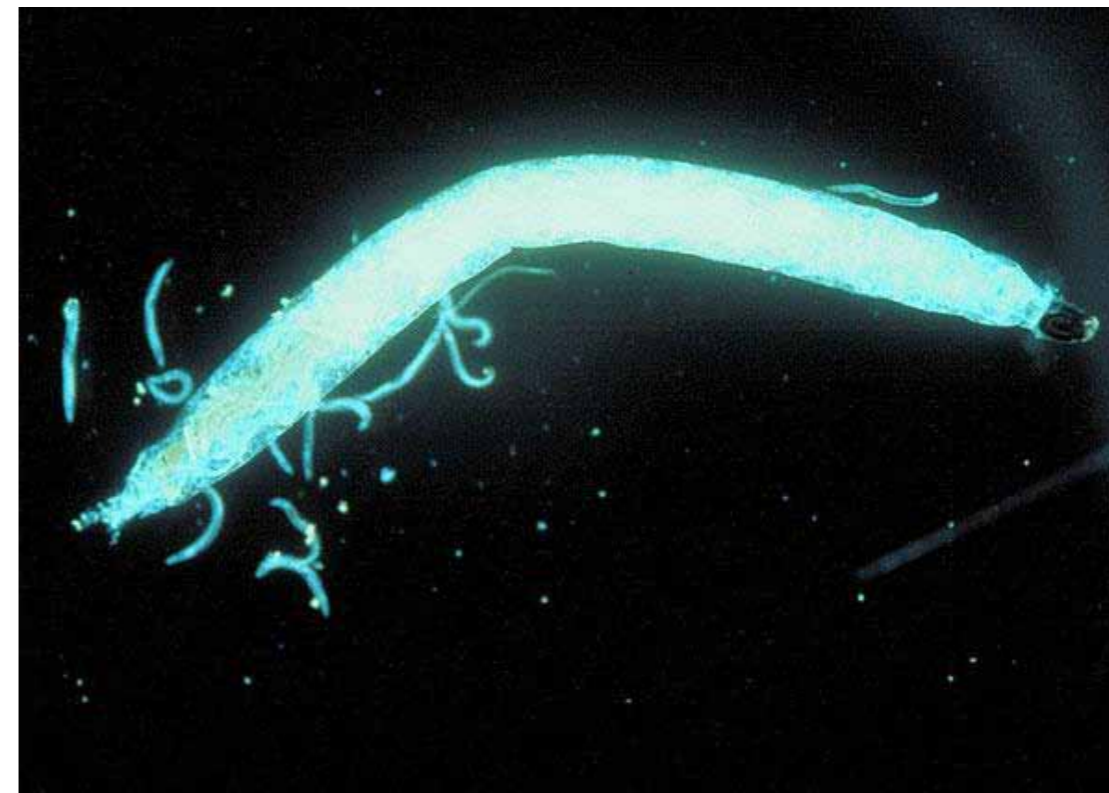
Without insecticides to control the Crane fly larva, we will have to rely on the use of the entomopathogenic nematode *Steinernema feltiae* to reduce the number of leatherjacket grubs in the soil. Applied as a drench with a sprayer, the nematodes move through the moist soil to find a Crane fly larva and enter the body, where they multiply and release a strain of bacteria that kills it. The dead larva rapidly decomposes, releasing more nematodes into the soil, which can then infect new hosts. To get the best results from using nematodes, they need to be applied carefully following all supplier recommendations.

The main points are listed below:

1) Upon receipt of the nematodes, use them immediately or store in a refrigerator at 5C. DO NOT FREEZE.

2) Use the entire contents of each pack at one time. Do not split or subdivide individual packs as

ABOVE: Leather jacket
BELOW LEFT: Female crane fly
TOP RIGHT: Nematodes infecting fly larva
RIGHT: Parasitic nematode *Steinernema feltiae*
RIGHT BELOW: Crane fly larva - known as a 'leatherjacket'



each contains a measured dose of nematodes. Do not store diluted product.

3) Ensure that the turf to be treated is thoroughly watered before AND AFTER treatment so that the nematode worms can move freely in search of the target grubs.

4) It is best to apply on a dull day or in the evening to avoid exposing the worms to sunlight or high surface temperatures.

5) Make sure the application equipment is thoroughly cleaned before use, removing any traces of chemicals using a proprietary tank cleaner and plenty of water to rinse.

6) It is advisable to remove all fine filters (50 mesh or smaller) from the application equipment, including the nozzle filters.

7) Mixing. Partly fill the sprayer tank with cool, clean water. Start the agitator and keep it running until the application is completed. Empty one pack of nematodes into a bucket containing a minimum of ten litres water and stir the contents thoroughly making sure the entire product is mixed before adding it to the partly filled spray tank. Top up the tank to the required level. Apply immediately, keeping the suspension of nematodes agitated during application.

Nematodes are effective in soils between 12-20C and the ideal time for this treatment is early autumn – after the crane fly eggs have hatched

but before the soil cools below 12C. These microscopic nematode worms are available in trays sufficient to treat 500m squared (with smaller packs available on the retail

market at a premium price). The product has a limited shelf life (up to eight weeks in low temperature storage) and must be used before the expiry date.



Auto-enrolment: what you need to know

Garbutt & Elliott provide an update on workplace pension schemes and why everyone needs to be aware of the legislation

Since October 2012, phase by phase, all eligible UK job holders are being automatically enrolled in to a qualifying workplace pension scheme.

Auto-enrolment has come about following reports commissioned by the UK Government which, not surprisingly, showed that we as a nation were not saving sufficiently for our retirement.

The scheme is designed to address the fact that 50 to 55 percent of the working population do not save to a pension.

The good news for employees is that they do not need to do anything.

Responsibility for implementing the changes lies at the door of the employer.

Sue Andrews, employee benefit consultant within the wealth management team at Garbutt & Elliott, said: "Interestingly, of the 50 percent of UK individuals saving for retirement, the majority of these were saving via a pension scheme offered by their employer.

"It is no surprise therefore that the natural focus for encouraging retirement savings is in the workplace.

"Garbutt & Elliott is able to offer support in communicating the changes to employees.

"Under the new rules employers are accountable for informing their workforce about the pension reforms taking place.

"Companies must provide employees with the correct information in writing to ensure they are fully aware of their options, however they are not allowed to steer their staff in any particular direction, or offer incentives to opt-out of auto-enrolment."

This year, small and micro employers are required to provide pensions for their employees.

They will join large and medium-sized companies which have been auto-enrolling since the scheme was launched.

More than 43,000 companies have auto-enrolled already, but a

further 1.1 million need to do so by the end of 2018.

Those which persistently fail to comply could face substantial fines which can range from £50 to £10,000 per day depending on the number of staff employed.

Employees can expect their employers to have put in place a qualifying scheme by October 2018 at the latest.

More good news for employees come from the findings of a recent survey of 400 small and medium-sized enterprises which revealed that 30 percent plan to, or will consider, paying in more than they are legally required to under the new rules.

The contributions can vary but the minimum contributions once an employer has reached their staging date are below.

These minimums are applied to qualifying earnings which for tax year 2015/16 are earnings between £5,824 and £42,385.

For employers with existing schemes or those who would like to offer more than the minimum requirement different contribution structures may be offered but must be at least as good as the minimums offered by their employer.

All eligible job holders have the right to opt out within 30 days of being auto-enrolled.

That said, to date those exercising their right to opt out have been relatively few in number.

Opt-out rates for the first phase of auto-enrolment stood at 10 percent, although there have been concerns this might increase as employers, saddled with the regulation, may communicate it in a negative way.

Any employee who is classed as non-eligible i.e: aged between 16-24 or over state retirement age, or earning between £5,824 - £10,000 have the right to opt in to their employers scheme and enjoy an employer contribution.

The final class of worker are those classed as entitled.

An entitled worker is any worker earning less than £5,824 in tax year 2015/16.

These individuals may join the scheme but their employer is



under no obligation to make any contribution.

When an employer reaches their staging date, assigned to them by the Pensions Regulator, the employer will categorise their workforce into one of the three categories above.

Garbutt & Elliott have been working with employers to help them choose an appropriate scheme for their workforce and guide them through the regulatory and administrative processes.

The firm can also advise on whether any existing pension scheme can be converted into an auto-enrolment one and assess the eligibility of each employee at set up stage and at each subsequent payroll.

Factors which could affect the type of pension scheme employers choose to implement include whether investment options are being made available to employees, whether salary sacrifice is a suitable approach and the amount in contributions employers have to or want to make.



Sue Andrews

H₂Pro[®] DewSmart

H₂Pro DewSmart is a highly effective dew dispersant product for turf grass areas.

- 3-4 week longevity in ideal conditions
- When used as part of an integrated disease management programme DewSmart can help reduce the risk of disease attack
- Dew removal has been found to help promote higher levels of turf vigour
- Reduces the need for regular early morning switching of dew from greens
- Greens can be clear of dew for a cleaner cut and for the early morning golfer
- Simple to apply with standard boom sprayer
- Specially formulated to avoid scorch



Without DewSmart



With DewSmart
(26 days after treatment)

www.icl-sf.co.uk

www.icl-sf.ie

Tel: 01473 237116

Email: prof.sales@icl-group.com

Contact your local distributor or Technical Area Sales Manager for more information.

everris.

ICL
Where needs take us

Everris has united with other companies in the ICL Group to form a new global company - ICL.

Applying science to age-old problems

As autumn approaches, compaction can be a major problem, particularly in rootzones that have a high 'fines' content (clay/silt/organic matter)



Constant foot and equipment traffic over the summer months will have taken its toll in compacting the soil and pulverizing the fine soil particles to create a thin layer than can become a barrier for the transport of air and moisture into and through the soil profile.

These 'fines' can clog-up the micropores and fill-in the collapsed macropores with solids that force out oxygen and prevent the gravitational drainage of water.

In such instances, compaction can reduce the operating efficiency of turf by as much as 25-30% as water does not drain, air movement is stopped and root growth is restricted.

In addition, compaction can cause excessive run off and reduced irrigation effectiveness.

Regular aeration will of course help to alleviate these problems but at any one time using mechanical means, less than 10% of the surface will actually be affected.

A complementary treatment following mechanical aeration (hollow coring/verticutting), however is the application of Integrate Plus granules, containing advanced polymeric polyelectrolytes, together with a superior soil penetrant system.

Integrate's negatively charged polyelectrolyte (anionic) granules attract the positively charged (cationic) clay and organic soil particles in the soil and aggregate the minute de-structured clay particles ('fines') forming them into larger crumbs.

The formation of these crumbs opens up air spaces, allowing the free flow of oxygen and water and create spaces for root development.

Prepare a Defence

Deciding on which fungicide to defend your turf territory is key to ensuring a successful outcome.

For late autumn and winter the requirement is to identify the fungicides that contain 'actives' which work well under cool and cold conditions and, where possible, provide added physiological benefits.

Particularly effective under cool, cold conditions is the broad spectrum turf fungicide Eland and applications now will provide disease protection for up to 50 days.

This long term protection is achieved through the spray deposit being held on the leaf long enough to penetrate and be held within the leaf tissue, which serves as a fungicide reservoir constantly releasing its active ingredient, pyraclostrobin, to provide long term protection.

Eland is specially suited to being applied as a preventative treatment, especially when disease pressure is high.

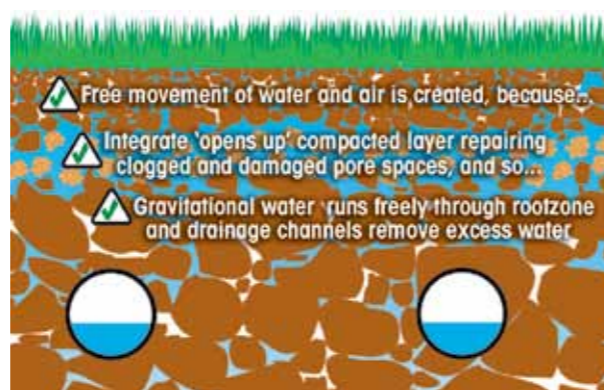
It is very effective against all stages of the fungus within minutes of being applied and can restrain mycelial growth to provide additional curative activity.

In addition to its proven abilities as a turf fungicide, research has shown Eland to have a number of additional physiological benefits.

Such benefits include improving plant health in the form of stress management under cold conditions and during aerification.

This has the effect of helping the plant and root system to endure a stressful event and overcome stress through root system retention.

In addition to combating fusarium attack, a major benefit during early winter is that applications of pyraclostrobin allows a plant to recover more quickly from root damage caused or surface foliar damage caused by ball mark injury.



ABOVE TOP: Compaction clogs up pore spaces, preventing free drainage and air exchange. Anaerobic conditions force out oxygen and roots struggle to survive

ABOVE: Relieving compaction opens up clogged pores and allows gravitational flow. Water/air balance is restored and root channels are reinstated

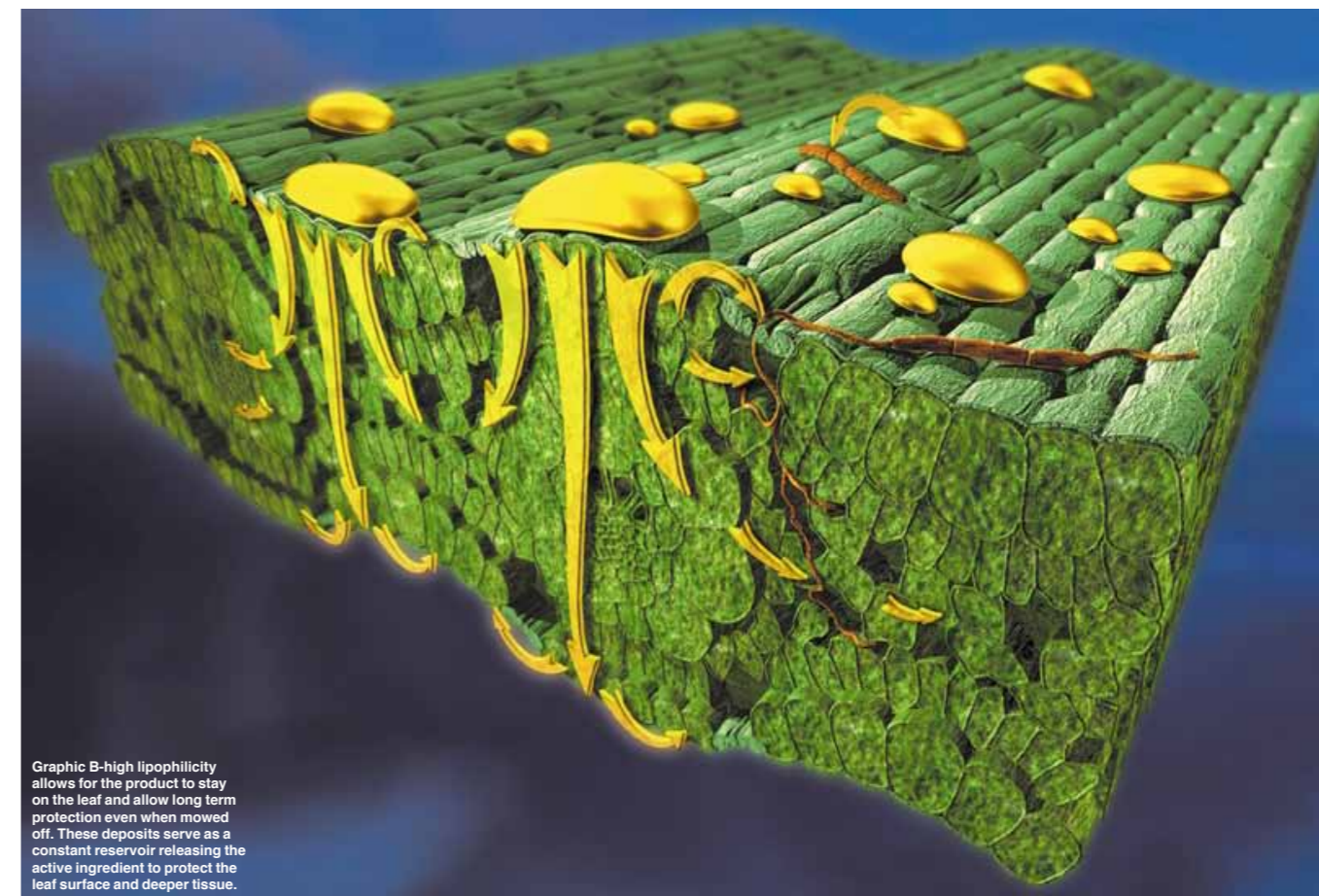
Identify and control

Black layer is a problem that can arise during the winter months, particularly common under wet conditions.

Poor water movement and waterlogging are probably the most frequently identified causes, however inadequate drainage, poor construction materials, algae and the use of inorganic iron/sulphur have all been implicated in its formation.

When oxygen is in short supply within the rootzone, the potentially toxic gases Hydrogen Sulphide and Methane can become prevalent within the rootzone pore spaces, resulting in root damage.

Products containing activated carbon absorb these gases so reducing the damaging effect they can cause.



In addition, where a rooting stimulant is incorporated in such a product as Blockade LX, the formulation will assist the plant roots to re-colonise infected areas and works well in combination with mechanical aeration, such as spiking or hollow tining.

Raising the Colours

Natural soil iron, though plentiful in the soil, can be deficient in the plant as it is mostly in an insoluble form, which it is unable to take up.

In addition, the continued use of iron products based on ferrous sulphate can also lead to problems, including black layer, turf blackening and reduced root growth.

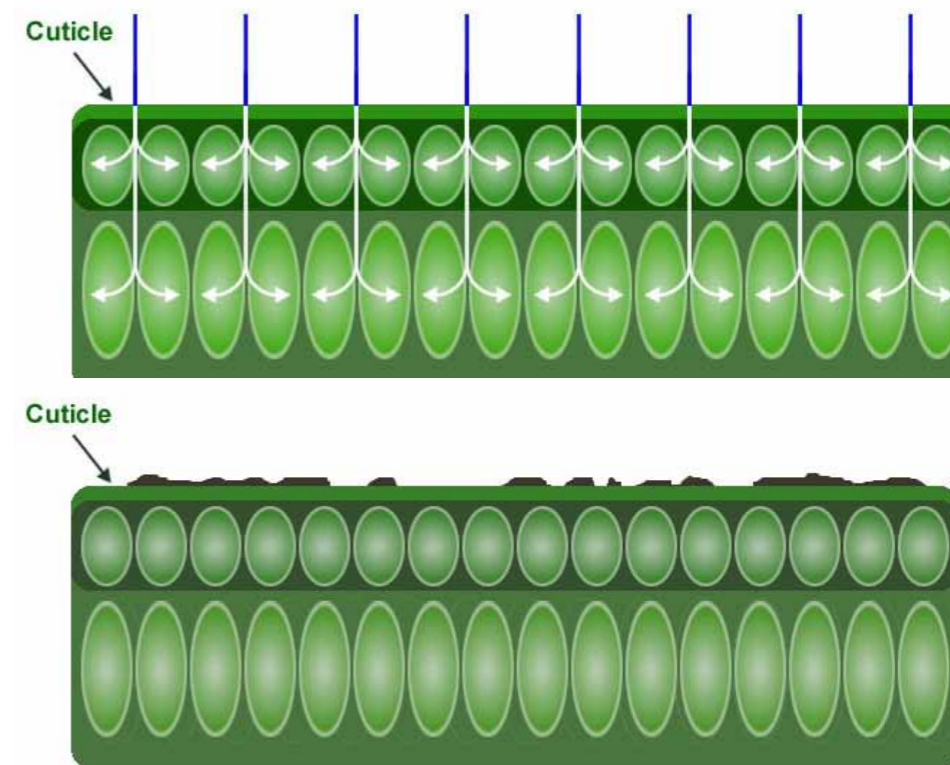
Ideally, the choice should be products containing chelated iron, which overcome these problems.

Such products are the only effective way of providing iron in a biological form that can be utilized by the turf.

Complex molecules protect the biologically active ferrous iron within their ring like structures, preventing it from reacting with other substances and become unavailable for plant uptake.

Operation review

Winter can be a testing time for the turf manager as no two seasons are the same.



ABOVE: chelated iron rapidly enters plant cells to provide a true greening effect that lasts longer; and (below) non chelated inorganic iron can just remain on the leaf surface

Being prepared is the key to a successful outcome and ensures the turf remains healthy and able to contend with the stresses brought about by changing climatic and growing conditions.

Pre-planning and control are essential requirements and there may be opportunities to integrate some of the aforementioned products into the winter programme which will enable the plant to resist or repel all that is thrown at it and be in an ideal state to advance into the spring and take up a healthy position.

Top Mark

Steve Castle headed to Fulford Golf Club to discover the challenge that awaits BIGGA Members at the BIGGA National Championship sponsored by Charterhouse and Kubota, and spoke to a greenkeeper who has nurtured the course for four decades - Mark Mennell

I arrived at Fulford Golf Club, just a few miles from BIGGA House, to see a relieved Head Greenkeeper Mark Mennell at the midway point of the Yorkshire Amateur Championship.

Heavy rain on the first day of the three-day tournament threatened play, but some squeegee work together with the quick-draining course meant the round was completed. The eight strong greenkeeping team's work did not go unnoticed, with a rules official striding over during our interview to personally congratulate Mark for their efforts.

As play commenced on a sunny second day, Mark began to detail a remarkable 40 year career, all at the 18 hole course which has hosted countless prestigious events during his time. He's an unashamedly

hands-on, old-fashioned greenkeeper. For example, he very rarely uses a stimpmeter, and he went on to explain why.

"We do have a stimp but I've only ever used it a handful of times. I rely on my eyes, watching a ball roll on the green to see if it's smooth or if it tilts, and I listen to comments from members and players. I'll be out and about later asking the Yorkshire Amateur players their views on the course.

"We don't cut below 3mm. I don't get involved in debates really. It's horses for courses - every single course is different and requires different strategies. But we don't do anything special for tournaments except for maybe a verticut a couple of days before a tournament commences. We try to keep the course at a high standard all year round, weather permitting."



After four decades on the green-keeping team, you would naturally assume the ten handicapper is one of the 700 members at Fulford. But instead he plays his golf at nearby Heworth. Why?

"I've always loved playing golf, however I know that if I was a member here, members would naturally be tapping me on the shoulder for one reason or another. I'm a listener and always welcome feedback, positive and negative, but I don't want it when I'm playing a round of golf. I've been a member at Heworth since I was 13."

The club's website describes the Charles MacKenzie designed course as a "heathland in a woodland setting", and it's Mark and the team's job to encourage more and more heather to bloom.

He's spearheaded a long-term project to alter the shape of the

bunkers, aiming for a more rugged appearance, as well as slowly removing the lush, parkland grasses to replace them with heather and the light, wispy grass more akin to a links.

Three years ago course architect Martin Ebert visited the course and provided an updated masterplan - focusing mainly on bunker relocation and renovation on certain holes plus woodland management and heather restoration.

Fulford measures two and a half miles from the clubhouse to the furthest point. Golfers play the first five holes before using a footbridge to access the second part of the course over the busy A64. Tree coverage ensures the course is screened from the noise of the carriageway.

Holes six to 13 are in a 'horse-

shoe' shape, close to a SSSI, before golfers play the final five holes back across the bridge. It's a particularly flat course, however the greens do boast subtle undulations which challenge even the lower handicappers.

Mark added: "I'm not a Head Greenkeeper who stays in the office. I'm always on the course getting involved in everything as does Carl Loseby, the Deputy Head Greenkeeper, who is in his 30th year here.

"All our work is done in-house, and I encourage all staff to get involved in every task. This includes new staff cutting greens and fairways within the first few months.

"There's so much going on in the industry now that if I wanted to, I could spend a lot of time attending various functions and seminars.

"However, I prefer to encourage

my staff to attend the majority of educational events provided by BIGGA and other providers as I believe 100% in greenkeeper education. Several of them recently attended a forestry course because we do a lot of woodland management here."

The team have been working to ensure a balance between good tree coverage and removing trees to produce a true heathland course.

Mark explained: "Since around 1997 we've been chainsaw mad!

"This was all part of the ecology plan set up by STRI's Bob Taylor to restore that heathland feel to the golf course, and Martin Ebert's plan helped move this forward."

Members are informed about what is happening on the course via bulletins and emails but Mark prefers to speak with the members to explain the reasons why changes

8th hole - photo courtesy of Gary Pearce



ABOVE: Mark Mennell
RIGHT: The greenkeeping team at Fulford



are being made and answer questions.

"I know that everyone who works here feels important. Every morning I ask the guys if they'd like to do a particular job - you have to have variety.

"When all the team are together I often ask if they have any observations. Often they will say something insightful. It's evident that they take pride in their job and take ownership and responsibility.

"It's a very, very busy course and it's big - 180 acres. It justifies a team of eight to stay ahead of the golfers when mowing and doing other tasks. The greens are also very large - it takes one man on a triple five hours to cut them.

"In the morning we tend to head straight over the footbridge and work on that part of the course before the golfers reach there. In the afternoon we work back towards so they only come across us once. I feel it is extremely important that the greenkeepers know what etiquette is expected from the golfers and also know how to plan their work around the course. This I feel is more important than educating the golfers!"

Leaving school at 16, keen golfer Mark was offered a job at Fulford by a friend of his father who happened to be chairman of green at the time.

"My dad was a rep and I'd thought about doing that, but I liked the sound of becoming an apprentice greenkeeper. I got taken for a drive round the course, I immediately thought "I'd love working here" and that was that."

Mark became Head Greenkeeper in 1989. He prepared the course for 14 of the famous Benson & Hedges Internationals with the likes of Seve Ballesteros, Lee Trevino and Bernhard Langer appearing. Fulford will always be synonymous with Langer's audacious shot played from up a tree on the 17th in 1981. The course has also recently hosted the European Ladies Team Championships.

But it's not all about the past. As well as the Yorkshire Amateur Championship, the club have the Carris Trophy to look forward to in 2018 - officially known as the English Boys Under-18 Open Amateur Strokeplay - plus various other trophies and events. So, what can BIGGA greenkeepers playing in October look forward to?

"Ultimately, it's a genuine Championship course, a real test for all levels of golfer and I hope the BIGGA members will enjoy playing here, it's a great course...that's why I've been here since 1975!"



Be BIGGA's best

The BIGGA National Championship 2015, sponsored by Charterhouse and Kubota, is at Fulford Golf Club, York, on 12-13 October 2015. You can win £500 worth of vouchers - just fill in the form below to book your spot...



BIGGA National Championship, Fulford Golf Club, 12-13 October 2015 Entry Form

Please select the relevant category:

- Full Member
- Affiliate Member

The entry fee of **£95** includes all golf fees, lunch both days and dinner on Monday evening. Please note that there is no accommodation provided.

Name

Address.....

..... Post Code.....

Mobile.....

E-mail.....

Membership No.

Handicap.....

BIGGA Section.....

Golf Club

Payment method (please tick)

- I enclose my cheque made payable to 'BIGGA Ltd' value **£95**
- Please debit my Mastercard / Switch / Visa / Delta card with the fee of **£95**

Card number.....

.....

Start Date Expiry Date

Last 3 security digits.....

Issue No. (Switch/Delta only)

Signature.....

Date.....

Or E-mail your details to:
rachael@bigga.co.uk
Ensure you receive confirmation of entry by return email.

Deadline for entry is 18th September 2015

Completed entry forms should be sent to:
BIGGA National Championship, BIGGA House, Aldwark, Aine, York YO61 1UF

The main tournament for the Challenge Trophy will be played over 36 holes, medal play, with the best overall gross score producing the BIGGA National Champion, who must be a greenkeeper member.

The greenkeeper player with the lowest nett score will be presented with the BIGGA Challenge Cup.

There will be prizes for the first five over 36 holes in the gross category. The top three in the nett competition will also receive prizes. After each day of 18 holes there will be prizes for winners of handicap divisions.

The BIGGA Regional Team Cup and prize will be calculated from the 8 best nett scores over the first day of play. There will also be various nearest the pin and longest drive competitions, featuring prizes.



Wildflowers a hit at Wigan

How a BIGGA member has teamed up with Germinal Seeds to give the area around their listed clubhouse a colourful boost



Paul Walker, Head Greenkeeper at Wigan Golf Club, has improved the aesthetics of the club's Grade II listed clubhouse by establishing a mature wildflower meadow on the banks of the ornamental moat within which it sits.

With flowers in bloom from March through to October, the newly sown area has not only added colour to the exterior of the clubhouse, but is also exceptionally easy to manage and maintain.

The Grade II listed Arley Hall sits within the confines of a Grade I ornamental moat and is the clubhouse for members and visitors to Wigan Golf Club. The outer banks of the moat have, over a number of years, become engulfed by rhododendrons that have left many parts of the clubhouse and gardens in dark shade.

"The rhododendrons surrounding the moat have outgrown themselves in recent years, casting long shadows across the moat, hall and gardens," Paul explained. "The area directly in front of the house had started to look particularly scruffy. So, I wanted to remove as much foliage as possible to let some light back into the gardens and to open up a picture-framed view of the clubhouse from the main driveway."

Work to remove the rhododendrons started in February last year, with the bushes cut back to reveal bare ground which was subsequently sprayed with glyphosate to kill any early season weeds. Subsequent glyphosate applications were then made throughout the summer as and when additional weeds emerged.

"The soil hadn't been weeded properly for eight or more years, so there was a really strong bank of seeds," Paul continued. "I wanted to sow the ground with wildflowers straight away, but held back until the end of the summer to kill off as many of the emerging weeds as possible."

Paul subsequently seeded the moat's bank with a wildflower seed mixture from Germinal, as recommended by the company's technical sales representative for the region, Paul Moreton.

"We've worked with Paul Moreton for a number of years to improve the quality of the grass on our fairways, tees and greens. He knows the course and clubhouse well and therefore specified a seed mixture which could cope with the shaded conditions of the moat's perimeter. He recommended Germinal's WFG8 mixture which contains a total of 24 different varieties including annuals and perennials. The profile of the seed mixture means we'll get a colourful display of flowers throughout the growing season."

The WFG8 mixture was broadcast sown at 3-5g/m² by hand with a fine fescue carrier, with the first bloom of annual flowers coming through the following spring.

The greenkeeper added: "We were treated to a rush of colourful growth in March despite a cold start to the year. The first flowers to emerge were Bluebells, Red Campion, White Campion and Foxgloves, and were followed later in the summer by Corn Marigolds."

It's not just the array of colours which has impressed at the golf club. "The newly sown area has matured exceptionally quickly and has achieved perfectly what we set out to do. Next year the perennials will start to take over and provide extra colour from March through to October. The wildflowers are already well established and have received some very positive comments from members, visiting players and greenkeepers alike."

The wildflower area requires very little work to maintain. "The climate in this part of Lancashire dictates that we get a lot of rain all year round. That means we're busy 12 months of the year and often struggle to find the time to carry out work away from the greens and tees.

"I therefore needed to find a simple way of improving the appearance of the moat without adding to the overall workload of the grounds team. The only maintenance the wildflowers need is an autumn strim to cut back any remaining plant material, after which the area takes care of itself.

"It's so easy to manage that we're going to extend the wildflowers further around the moat next year and also plant strategic areas around the course to add colour along the fairways and around the tees and greens."



Section Notes

Please email your notes to steve.castle@bigga.co.uk by the 10th of the month

All the latest news from your Section, in your new-look notes pages...



Around the green

Scotland & Northern Ireland

Find us on: **Bigga Scottish Region**

Contact your Section correspondent with news, events or anything else for Around the green...



CENTRAL
Craig Booth
cboath@
carnoustiegolflinks.
co.uk

Find us on:
**Bigga Central
Section**



SOUTH WEST OF SCOTLAND
Amanda Dorans & Ian Smith
amanda.dorans@lochlomond.com /
iansmithgm@hotmail.co.uk

Find us on:
Bigga South West Scotland



EAST
Hamish Campbell
greenkeeper@alancampbell.
demon.co.uk

Find us on:
Bigga Scottish East
@BIGGA_ES



NORTH
Paul Sharp & Neil Sadler
paulmsharp@hotmail.com
gkneil@sky.com



WEST
Stuart Taylor
stuart.taylor@
glasgowgolfclub.
com



NORTHERN IRELAND
Chris McArthur
cmcarthur66@hotmail.co.uk

Find us on:
**Bigga Northern
Ireland**

in for Friday 2 October at Clandeboy Golf Club. It promises to be a terrific event with greenkeepers battling it out on the course before heading to the clubhouse for some networking on the Friday evening. Full information will be sent out soon.

WEST

The AGM will be coming up soon and I hope a good turnout is evident, I will confirm the date and venue next issue.

News

NORTH

A great day was had by all at Portlethen GC for the BIGGA Scottish Championships. The course was presented in superb condition and everyone's comments reflected this. Well done to Neil Sadler and his team for their efforts.

The new Scottish champion is Chris Lamb, who produced a fine round of 68 (-4). A score like this would normally win by a margin but several players returned scores under par, which demonstrates the standard. I'm sure John Young told me we had 22 players with a handicap of 3 or under!

As usual, anyone with any information or news relevant to the Scottish north news section, please get in touch with myself or Neil.

CENTRAL

Best wishes to Lyn Joplin who has recently left her position at SGEG/SGU.

Well Done to the Central Section guys for winning the St Mungo Trophy at the Scottish Championships.

With all the goings on of The Open I forgot to mention a new arrival last month for Paul and Fiona Armour, a baby boy Rory.

Congratulations to Gavin Neil on his recent marriage to Ashley, all the best to you both for the future.

Condolences to all the family and friends of Tom Brannan from Greentech Sportsturf Ltd who has passed away.

EAST

Have you had a summer? Its only the middle of August as I write this and we have already come close to having a frost, I'm sure some higher inland courses have had frost, but yet courses out and about still look good and are playing well, must be doing something right! At home my rain gauge shows July had the same rainfall, 5.5" as April, May and June combined!

Ronnie Frame has moved to Sherriff Amenity, good luck in your new post.

BIGGA East Section was well represented at the Open with 4 members on the support team, Jamie Martin, Sean Cunningham, Bruce Watson and Stuart Ferguson all have wonderful stories to tell, so have a chat with them and maybe you will want to volunteer next year. Jamie Martin, BIGGA East Sections chairman drew the prize grouping on Friday/Saturday - raking for Tom Watson on his final Open appearance. A day he will never forget... and Jamie will remember it for a long time too!

A casualty at the Open was Jimmy Nielson who was bitten by an insect and was quite poorly for a while, but is well on the road to recovery now.

Remember to keep info and pictures coming, it's not all Hot Air!

Events Coming Up

NORTH

We should all have the entry form for the autumn outing at Kennay Golf Club. Please return the form along with payment to Ross McRae. Get your application in soon, as we expect this outing to be popular.

EAST

aald Cardona, entry forms are in your email, or available from Stuart Ferguson. Buggies are available for hire, contact Bruce Watson at Cardona for details. Our Section AGM will be held at Dundas Park on 27 October at noon. Speakers/education for both events to be confirmed.

If anyone has any suggestions or ideas for a Christmas day/night out, please get in touch with a committee member with anything no matter how daft it may sound.

NORTHERN IRELAND

The BIGGA Northern Ireland championship has been pencilled



Scottish Central - Gavin Neill and Ashley



Scotland East - Jamie Martin

NORTHERN IRELAND

The fans were again out in force at Galgorm Castle, the 39,250 tournament total almost 5,000 higher than last year with Frenchman Clement Sordet becoming the new Northern Ireland Open Champion. The more experienced players praised the condition of the greens, comparing the course to standards they have come across on the European tour. Well done to David Snoddy and all the team involved who were hard at it, up to and throughout the week.

By the time you read this the last major of the year will be over and your course may see a slight decline in club activity. But not for us. Our section events will soon be up and gaining momentum, with some key dates for your diary. Check out the events section on the website or log into the members area and select 'Regions and sections'.

As a new section to get up and running, BIGGA Northern Ireland welcomes those companies involved in the greenkeeping



industry to participate in the patronage scheme. The Patrons will provide an opportunity to support the association while increasing their profile throughout the region. Anyone who would like to discuss the Patronage scheme then please contact John Young on 07776 242120 or by emailing johnyoung@bigga.co.uk

WEST

Well the weather seems to be all we talk about recently simply because it's rain, rain, and more rain, the wettest July ever and I'm 200mm above the wettest ever recorded rainfall so far this year, I just hope the rest of the year will brighten up. Only a few things to mention in passing, the Autumn outing planned for East Renfrewshire in September will be reported on in the next issue, Richard Green of Scot JCB has just become a father with his wife giving birth to a lovely baby girl, congratulations.

Gordon Howat has moved from Souters to work for STRI and congratulations are in order, Gordon spent 15 years with Souters and was sad to leave them but sometimes when an opportunity comes your way you have to go for it, he said a farewell with a few beers and a wee game of golf.

Ronnie Miles recently had a small operation - all is well and the section wish him the best of health.

Sorry for not having more information but I need people to supply material I hope to have a bit more next month.

SOUTH WEST OF SCOTLAND

The past few weeks have been quiet and some normality has returned after the many tournaments that have been held around South West Scotland - hope everyone involved enjoyed tournament prep!

Happy Birthday to SWS's Chairman Frank Clarkson - hope you have a good day!

By the time you read this, the Autumn Outing will have been and gone, so thank you in advance to Keith Aitken and his team at Brodick for hosting us. I'll write an account of the event in next month's notes.

Thank you to Derek Wilson for hosting the recent Board Meeting at Bogside.

Please support the Section's upcoming events and register as soon as possible.

Good Luck to all of this year's Golf Environment Award entrants - a terrific platform for our industry to demonstrate our commitment to our playing surfaces and the surrounding landscape. As always please email any photos or news to either of the above email addresses.

Northern

Contact your Section correspondent with news, events or anything else for Around the green...

					
NORTH EAST Glen Baxter glen.baxter@rigbytailor.com	NORTH WEST Tom Wood & Tim Johnson tomwoodtmw@gmail.com/tim_j87@hotmail.com	CLEVELAND Anthony McGeough amcgeough@aol.com	NORTHERN Chris Goodall christopher.goodall11@hotmail.com	SHEFFIELD Ilan Whitehead admin@hillsboroughgolfclub.co.uk	NORTH WALES Pete Maybury petemayb66@aol.com
 Bigga North East  @NEBIGGA	 BIGGANorthWest  @BIGGANorthWest	 BIGGA Cleveland  @BIGGA Cleveland	 BIGGA Northern  @BIGGA Northern	 BIGGA Sheffield  @SheffieldBigga	 North Wales  @BiggaNorthWales

Events Coming Up

NORTH WEST

The Whitelaw Bowl is at Penrith on 10 September only £10 to enter. Prize table includes a free entry to the National Championship at Fulford GC in October.
The Walker Cup is at Lytham on the 12&13 September.
We have our Autumn seminar at Myerscough College on 28 October, one of the speakers is Steve Chappell from Gleneagles.

CLEVELAND

The Northern Section Committee have arranged an Assistant Greenkeeper Development day, at Selby Golf Club on 9 September, the day will include the following:
2.00pm Coffee and Registration
2.30pm Introduction from Nigel Coultish
2.45pm Presentation from Stuart Green on the NEW Trailblazer Apprenticeship Scheme and funding, CPD and Learning & Development
3.15pm Overview of Selby Golf Club from Nigel Coultish prior to the Course Walk
The Course Walk will include a visit to the sheds to see the grinding unit, hydraulic lifts and other items of interest and will include pin positioning, tee markers and presentation.
To book a space email n.coultish@sky.com with your name and golf club details.

NORTH EAST

Autumn section golf day will be held at Ponteland GC on September 22 check social media for tee times for this event or contact myself.

SHEFFIELD

Our next golf day is at Tankersley Park GC (postcode S35 4LG) on 17 September, for a booking form visit bigga.org.uk under events.

NORTHERN

Dennis Cockburn, our BIGGA Northern Section President, celebrated his 80th Birthday in June of this year and it is his President's day on 24 September at Ilkley Golf Club with first tee from 10.30am.
The day will start with a machinery demonstration from sponsors Bolton Abbey Mowers who are our sponsors for the day and conclude with the prize presentation dinner (jacket and tie).

The trophies are provided by Dennis himself and we know he takes great pride in ensuring everyone has a good day so if you can come along and celebrate a fantastic day with our President then please do so. To book please email andy.slingsby@googlemail.com

News

NORTH WALES

The Northern region intersection day took place at Middlesbrough GC on 12 August and North Wales was represented by Simon Ashford, Phil Watson and John Mooney.

The lads did really well coming in as runners up to Sheffield section and Cleveland section coming in third. Vale of Llangollen GC welcome Tony Mash to their team from 1 September, he will join the association when the team renew their membership.

The Llangollen lads would also like to thank Ian Gibson for his invaluable help during the transition to the new full time team.

NORTH WEST

Dan Harris of Tytherington Golf Club will be joining Gwynn Davies and his team at The Mere Golf Resort And Spa as an Assistant Greenkeeper, we'd like to wish him luck in his new job.

Scott Reeves has become The Northern Section Director and Tim Johnson has taken over from Scott as the Northwest Section Chairman, we'd like to congratulate them both and wish them good luck in their new roles.

CLEVELAND

August was really busy for me - I was lucky enough to have been selected for the Open support team along with Richie Hood and Danny McGuckin from the Cleveland section. And what an experience it was! The days were long but the camaraderie and friendships that were formed will be long lasting.

My journey home after the event may of lasted a little longer.

Having taken some advice from a local (John Young) to avoid the Forth Bridge I set about on what can only be described as a mystery tour of Scotland! Add this to my excellent navigation skills I managed to extend my journey time by two hours.

After setting off from St Andrews at 8pm I arrived at home at 2am! Sorry to Danny McGuckin who I was giving a lift to because I assured him I would be quicker than the train...

North East v Cleveland results:

Barry Walker and Richard Hood v Jack Gunn and Simon Olver 1-2.

Anthony Cheeseborough and Chris Smith v Paul Gilmore and John Horn 0-1.

Martin Woods and Phil Hargrave v Michael Gunn and Greg Lee 2-1.

Ben McGratten and Paul Legg v Glen Baxter and Ben Potter 7-5

With 9 games each the quiz maestro was on alert and called in just at the deciding moment with the Brendan Tie Break question 'What colour is a Polar Bear's skin?' - With a quick fire answer by the Cleveland Captain Cleveland were declared victorious.

This was a superb day played in the best of spirits so huge thanks must go to TSL, Alan and Paul for attending, South Shields Golf Club for granting courtesy of the course, Phil Hargreaves and the team for providing a stunning venue in every way possible, to the catering staff for amazing food and last but not least to the players for the 'great crack'.

TSL have said they will support again next year so look out for the notification requesting team members.

The white moss trophy is taking place at Middlesbrough GC on Wednesday 12 August. If my information is right we are defending the trophy.

Good luck to David Cuthbertson, Richard Hood and Paul Legg. A full report will follow in next months around the green but if you can't wait that long check out the Cleveland section Facebook page.

NORTH EAST

North east section v Cleveland section held on South shields GC, the match finished 2 points each, so we decided the match would be decided via a tie break question and the two captains would give their answers!

The oracle of the north was consulted (Brendan Brown from Northern Lubricants) to give us a question and to everyone's surprise Cleveland's Barry Walker answered correctly and won the day for Cleveland!

A great day was had by all, South shields GC were great hosts and the course was in fantastic condition so thanks go to the club and Phil Hargrave and his staff for the course condition.

The White Moss trophy northern region match was held at Middlesbrough Brass castle GC and was won by Sheffield section, north east section finished 4th.

Thanks to John Talbot for the great condition of the course it was immaculate!

A special mention must go to Sandra Raper of BIGGA who always helping organise these events, so from the north east section we thank you!

SHEFFIELD

Sheffield Section representatives Rob Acheson, Dave Brownlow and Wayne Lazenby travelled to Middlesbrough Golf Club, Brass Castle in August to compete in the BIGGA Northern Region Whitemoss Inter Section Challenge Shield (see pic below).

The weather was a perfect summer day and the course, prepared by John Talbot and his team, was both challenging and impeccable.

Playing a full handicap stableford with all three scores to count the results were: Northern Section 80, North East and North West Sections both scored 82, Cleveland Section (defending 2014 champions) 85, North Wales Section 90 and Champions for 2015 were Rob with 39, Dave 31 and Wayne 24 making a winning score of 94. Congratulations to our team and to Middlesbrough GC for being fantastic hosts both on and off the course.

NORTHERN

Congratulate Adam Matthews who is taking the head role at Moor Allerton GC.

Thanks to Sponsors

NORTH WEST

The North west section would like to thank all of the section sponsors for the continued support that they provide throughout the year.

CLEVELAND

Thanks to TSL for supporting the Cleveland v North East golf day. TSL will again support next year.

NORTH EAST

Thanks again to sponsors TSL who annually make North East v Cleveland such a great day. White Moss Trophy: Thanks to sponsors White Moss.

SHEFFIELD

Thanks to Russell Group for sponsoring the golf day at Tankersley Park. Also thanks to Whitemoss Eco for sponsoring the Trophy.

NORTHERN

Thanks to Bolton Abbey Mowers for sponsoring Dennis Cockburn's President's Day.





Midland

Contact your Section correspondent with news, events or anything else for Around the green...



BB&O - The Stick
bboscribe@gmail.com or Matt Nutter
bboscribe@gmail.com
Find us on Facebook
BB&O Greenkeepers
@bbogreenkeepers



MID ANGLIA
Darren Mugford
d.mugford@rigbytaylor.com
Find us on Facebook
Bigga Mid Anglia
@BIGGA Midlands



MIDLAND
Dave Collins
greendave2004@hotmail.co.uk
Find us on Facebook
Bigga Midland Section
@BIGGA Midlands



EAST OF ENGLAND
Steve Beverly
steveimingham@aol.com
Find us on Facebook
EastofEnglandbigga
@biggaeastmids



EAST MIDLANDS
Matt Gilks
gilksmatt@farol.co.uk
Find us on Facebook
East Midlands BIGGA
@biggaeastmids

Events Coming Up

MIDLAND

Autumn Tournament Kidderminster Golf Club 9 September.
Start: 12:30, Cost £25 Closing Date: 8 September.
Prize Sponsor - Working Turf.
Make Your Own Team Of 4 Players - 18 Hole Stableford
Don't worry if you cant make a team up we can put you in to teams, call Karl Williams on 07584 196172 to book.
Wimbledon Day trip 14 October - £10, coach and food provided, limited to 2 staff per course to make sure its shared out equally, get in contact quickly as this will be very popular to book please contact Gary Watkins on 07738 199374 .
Winter Tournament Blackwell Golf Club Wednesday 9 December
Start: 10a, - Cost £27 Closing Date: 21 November.
Pairs For Partners To Be Drawn On The Day.

EAST MIDLANDS

Next comp is the AGM @ Willersley Park format is Texas scramble on 29 Oct 1st tee 9.30am.
Committee nominations or questions please forward to Asa no later than the week before the AGM which is scheduled for 3.30pm on the day.

News

MID ANGLIA

Here are the results of our latest golf day at Welwyn Garden City GC where 40 competed in a Pairs Competition:
1 F.Scullion & M.Scullion 43pts, 2 A.Fulcher & M.Finn, 42 points, 3 N.Broadwith & K.Armstrong 40.
Longest drive L Owen, nearest pin G Merrison.
A massive thank you to Welwyn Garden City GC for allowing us to play the course and to Brett Cox and his team provided everybody with a stunning course and thanks to the catering team for a superb meal and hospitality.

MIDLAND

May I apologise for the lack of notes the last couple of months, I will be more well behaved in future! Congrats to Dale Housden who has taken over as Course Manager at Hollywood Golf Club, good luck Dale and welcome to the section.

Good luck to Adrian Handsbury who has moved from Ladbrook Park to the Welcome Golf Club, and congrats and good luck to John Badger who has moved from Welcombe to Stratford upon avon GC.

Let me know pop pickers of any other movers and shakers and I will put them in here.

The Autumn event at Kidderminster will be a great event but it is also the AGM so if you can't come for the golf, let us know if you will attend the AGM as the more members attend the more involved everyone becomes.

Good luck to everyone about to do renovations and phew to all those that have completed theirs, I'm not jealous at all!

One last thing - get applying for the Bernhards BIGGA delegation! The closing date for applications is Sunday 13 September go to the BIGGA website and apply - I want to be reporting on one of you guys going.

EAST MIDLANDS

A big thank you to Tim Needham and his staff, what a challenge his par three course is at Beedles Lake, I think the course and layout were superb.

Nearest the pins: Lee Wenlock x2, Geoff Parmer, Glynn Buckby, John Coleman, Geoff Fenn, Keith Rilands, Simon Banks, Kev Kinser.

Winners for second year running at the par three team event were Chris Wier and his team from Market Harborough second was Beedles Lake and third Carl Chamberlain from Rigby Taylor.

The section wishes Mark Bindley all the best on his new venture on the other side of the business in groundsmanship.

EAST OF ENGLAND

Summer Golf Day at Woodhall Spa - 1 Robin Portess, 2 Graeme Macdonald. Nearest pin Richard Mackay. Longest drive Rob Bemment The course was in excellent condition thanks to Sam and his team. We also enjoyed excellent hospitality from the clubhouse staff.

Thanks to Sponsors

MID ANGLIA

Thanks all the members of the trade for their continued support and donations of raffle prizes on our golf days which are always very much appreciated.
The Mid Anglia Section would like to thank their wonderful Sponsors for 2015 and we are very grateful for your continued support: Avoncrop Amenity, Headland Amenity, Amtech Amenity, Farmura, Everris, Countrywide, Banks Amenity, ALS, Rigby Taylor and Tuckwells Machinery.

MIDLAND

Thanks to Everris for sponsoring the Wimbledon trip and to Campy for sponsoring the prizes at the Winter tournament.
Thanks to calendar sponsors for August Limagrain contact Matt Gresty on 07767 278335.

EAST MIDLANDS

A massive thanks to Alan Grey from Platts Harris, and his team, Harvey Doughty from Ransomes Jacobson and Jason Briggs from Sisis Dennis, for the sponsorship at Beedles Lake and their hospitality was fantastic.

EAST OF ENGLAND

The summer golf day was very kindly sponsored once again by Chris Sellars Groundcare Ltd (TORO).

SUPERB RANGE UNBEATABLE VALUE

SALTEX
Stand H010

0%
FINANCE
AVAILABLE*

The TYM compact tractor range. Powerful, reliable, four-cylinder diesel engines available from 23 to 100hp mean these superb workhorses can cover a wide variety of tasks on the golf course, while offering outstanding value for money.

Packed full of innovative features such as easy-to-read LED display, hydrostatic power-steering, optional weather cab, and much more, TYM tractors make the ideal choice for any discerning golf club and greenkeeper.

Put us to the test. For a free onsite demonstration, call Lely on 01480 226800.



* Terms and conditions apply. Finance is for business purposes only and is subject to acceptance. UK only. For a limited period only. Available on all TYM machinery. Includes listed accessories on new machines. Terms current at date of publication.



MODEL SHOWN TYM 1433 WITH TURF TYRES

Lely. Your partners in turfcare. Call 01480 226800.

Lely not only brings you TYM compact tractors. Talk to us, too, about Toro turf maintenance equipment, Toro irrigation and Otterbine water management systems.



partners in turfcare

TYM official distributor, UK & Ireland | Lely (UK) Limited, St. Neots, Cambridgeshire PE19 1QH. Tel: 01480 226800 | Lely Ireland Limited, Kibboggan, Nurney, Co. Kildare. Tel: 00 353 (0)45 526170 | www.lelyturfcare.co.uk

INTRODUCING OUR

AWARD

RANGE

A selection of products including **fine turf granular fertiliser, liquid fertilisers, liquid seaweed, wetting agents and liquid irons**, all created for unequalled performance

enquiries@aitkens.co.uk
T: England: 01977 681155
T: Scotland: 0141 440 0033
www.aitkens.co.uk

SEE US AT SALTEX STAND A080

TERRA RAKE

HIGHLY PRODUCTIVE & EFFICIENT THATCH REMOVAL. NOW AVAILABLE IN FIVE VERSIONS FROM 1.6M TO 4.6M INCLUDING AN ELECTRIC TRAILED 1.7M OPTION.

For more info call
0141 814 3366
www.wiedenmann.co.uk

South West & South Wales

Contact your Section correspondent with news, events or anything else for Around the green...

			
SOUTH WEST Jaey Goodchild j.goodchild@bowood.org	SOUTH COAST Steve Thorne biggasouthcoast@hotmail.com	DEVON & CORNWALL Cameron McMorrin cjmcmorrin@gmail.com	SOUTH WALES Andrew Hatcher andrewhatcher1@msn.com
 Facebook Bigga Southwest @BiggaSouthwest	 Facebook Bigga South Coast @BIGGASouthcoast	 Facebook Bigga Devon and Cornwall	 Facebook Bigga South Wales @BIGGASouthWales

Events Coming Up

DEVON & CORNWALL

It won't be long until BTME, we have two sponsored places available that we are taking nominations for, it's a great experience for someone who may not have been before or hasn't been for some time.

SOUTH WALES

Our Annual match v North Section is on Friday 12 October at the Royal Porthcawl GC - ranked 22nd in Golf Monthly's Top 100. Please Contact Darryl Jones our match Captain if you wish to play.

Another great course on our fixture is Langland Bay GC on Wednesday 21 October for our Autumn Match & AGM start time 11am.

Quick reminder The Worcestershire Golf Club are holding a Demonstration Day with Campey Turf care date to be confirmed next month.



SOUTH COAST

At the time of writing, the details for this year's AGM are being finalised. This event traditionally sees strong support from members. Further details of dates, venue and format will be announced shortly, together with details of how to book a place.

SOUTH WEST

Our next golf event is the Summer Tournament at Bristol & Clifton Golf Club. Entry forms and details have been emailed to all on the section mail shot. If you haven't received the details, please email your details to ensure you receive up to date info. (southwestsectionbigga@outlook.com)

2015 Golf fixtures are as below. Get them in your diary and please be proactive in registering for these events to ensure everyone involved can work toward their success, these events are for all of us to enjoy.

10 September Summer Tournament and National Qualifier at Bristol & Clifton Golf Club

18 November Regional Conference at Somerset County Cricket Club

15 December Christmas Tournament at Marlborough Golf Club

Entrants in the South West Section Countrywide Knockout please stay in contact with Joe Curtis greens@gloucestergolf.com to ensure the draw and results are up to date.

All of our Section events are open to members of other sections, please feel free to contact us and attend as everyone is welcome.

News

DEVON & CORNWALL

The annual Devon v Cornwall match took place at Woodbury Park GC back in May with Devon just taking the honours and Anthony James (Jacko) Truro GC winning a place at the National Championships at Fulford GC in October, many thanks to Ian Chenery and his team as well as our sponsors for the day.

St Mellion hosted the Golf Management Trophy and the winners were Portmore GC, with St Mellion taking the runners up spot, they go on to represent the section at Frilford Heath in October. Thanks to Mike Bush and his team for a very enjoyable day.

It was great to see our profession given some positive exposure at the Open, I thought considering the weather the course stood up well. Rob Cook, Course Manager at Bowood GC, helping out the Old course staff for the week.

The section would like to pass on our get well soon wishes to Eric Barber one of our retired members who was knocked off his bike whilst training and has suffered some nasty injuries including a broken leg, we hope to see you at a meeting soon.

George Stephens has taken up the position of Course Manager at Tiverton GC leaving his role as Deputy Head at Exeter G&CC, good luck with the new role.

Lastly we are looking for some new blood on the section committee if there is anyone who is interested in joining our section committee please contact myself Jason Brooks or Colin Webber via email jasbrooks8@hotmail.co.uk or colin@portmoregolf.co.uk

SOUTH WALES

Myself and many others found ourselves amongst the birch, beech and oak trees of the ancient Llwyni wood at Newport Golf Club playing for the Patrons Cup, the course was in cracking condition thanks to Paul Handy and his team, and the food fantastic. A good turn out with new faces attending too. Darryl Jones produced an excellent round and will be heading to Fulford GC in October to play for the BIGGA National Championship 2015.

SOUTH COAST

Our second Turf Club event was held at Southampton FC's training facility in Marchwood, Southampton. A full report of this event can be found in the "Newsdesk" section of the magazine. These events have gained real momentum in the short time they have been running, with their popularity reflecting the opportunity to network with fellow BIGGA members and to acquire some CPD points.

Our third event, courtesy of Hockley Golf Club, will be reported upon in the next GI Magazine.

A thoroughly informative, educational and beneficial day was enjoyed by those who attended the "Making Successful Presentations" workshop held at Hockley Golf Club on Monday 10 August. Michael Astrop, who teaches presentation and public speaking skills professionally, was excellent at guiding the group and outlining the skill set required to make a successful presentation.

The fully interactive day was concluded with each member of the group making a five minute presentation, using the skills learnt and discussed throughout the day. An evaluation was given by Michael and the group at the end of each talk. The theme of the

presentation was left to the individual and included topics ranging from football, photography, playing the guitar and a zombie apocalypse!

Thanks go to Michael Astrop for being a terrific tutor, Tracey Harvey for organising the day and to Hockley Golf Club for hosting the event.

Congratulations go to Andy Clark, from Broadstone Golf Club, for being awarded a sponsored position at BTME 2016, courtesy of the South West Region.

Andy voluntarily serves on both the Section Committee and the Young Greenkeepers Committee. This, coupled with his enthusiasm and dedication to the industry have made him a worthy recipient of this award.

SOUTH WEST

Following 40 years of service, David James Seabright will be retiring from the greenkeeping team at Kingsdown Golf Club in October 2015. David started with the club in 1975 and will be greatly missed by all of his colleagues upon his retirement.

On behalf of all of the South West Section David I offer you congratulations on your contribution to the success of Kingsdown Golf Club and best wishes for the future.

Thanks to Sponsors

DEVON & CORNWALL

Thanks to Everris for sponsoring the Golf Management Trophy at St Mellion.

SOUTH WEST

Many thanks to our South West Section 2015 Patrons: Countrywide, Farmura, H Curtis & Sons, Ecosolve, T H White, Greensman, Irritech and Headland Amenity for their continued and valuable support of BIGGA South West Section.

Without their support we would not have the opportunity to provide the level of training and section events that provides.

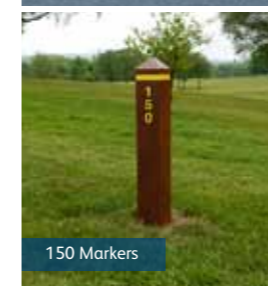
EAGLE On Course Furniture



EaglePlex from £199
(+ Delivery and VAT)



Hardwood from £225
(+ Delivery and VAT)



150 Marker



Hazard Marker

*Manufactured in the UK
at the Eagle Plant*

Contact Eagle for more information
t + 44 (0)1883 344244 e info@eagle.uk.com w www.eagle.uk.com

Point of Play Tee Markers from £4.95



EaglePlex Marker



Tee Caddy Marker



Upright Marker



Octagonal Marker

South East

Contact your Section correspondent with news, events or anything else for Around the green...



SURREY
Mark Day
mark@daylinks.co.uk
@surreybigga

KENT
Rob Holland
premiergolf2012@hotmail.co.uk

SUSSEX
Joe Dormer
josephmichael.dormer@gmail.com
BIGGA Sussex Section

EAST ANGLIA
Mick Lathrope
m.lathrope@ntlworld.com
BIGGA East Anglia

ESSEX
Arnold Phipps-Jones
essexbigga@talktalk.net
Essex Bigga

LONDON
John Wells
j.wells1@sky.com
Bigga London

Events Coming Up

ESSEX

Next golf day is on Wednesday 16 September at Colne Valley Golf Club and my last, since I am retiring in mid October, and relocating to mid Wales, not far from Aberystwyth. It will be good to see you all and say goodbye. Check out the website for more information.

SURREY

16 September Match v Reps Hankley Common GC
29 September Surrey Bowl Final Foxhills G&CC
6 October Tri Counties Match Windlesham GC
3 November England v Scotland Hankley Common GC
18 November Match v Secretaries The Berkshire GC
4 December Turkey Trot Guildford GC

Evening education sessions are being finalised and will be underway shortly beginning sometime in late Autumn. Alistair Allpress is on the lookout for speakers, so if you feel you are able and like to contribute to these events, Please get in touch via www.surrey-bigga.co.uk.

KENT

Kent Section shall be taking to the fairways again at the delightful Walmer and Kingsdown Golf Club on Thursday 24 September. First tee is at 12pm so please arrive no later than 10.45am for coffee/bacon rolls and to allow us time to organise the draw. Usual 18 hole individual stableford comp followed by dinner so jacket and tie please. Hope to see as many of you there as possible. Please let us know in advance of your intention to attend or not.

News

ESSEX

30+ members and guests attend our Blind Pairs golf day in the last week of July at Toot Hill golf club. This is the first time we have visited this fine club in the past twenty years. Our thanks to the hospitality afforded by the members and staff of Toot Hill. Prizes went to the following:

Blind Pair - Peter Smith & Steve Bush 66 points. 1 David Reading 40, 2 Peter Smith 34. Trade prize Steve Bush 32. Nearest the pin 12th hole, Liam Springett. Nearest the pin 15th hole, Steve Bush

BIGGA

golf management trophy

sponsored by Everris



3 July
St Mellion
International
Resort

8 July
Cradoc Golf Club

22 July
Minchinhampton
Golf Club

19 August
Dunham Forest Golf Club

7 September
John O'Gaunt Golf Club

1 October
Brokenhurst Manor Golf Club

19 October 2015
The BIGGA Golf Management
Trophy 2015 Final is at Frilford
Heath Golf Club



Scotland and Northern Ireland

David Sutherland, Greenkeeper, St. Andrews Links Trust, Donald McAllister, Greenkeeper, Glenalmond College GC, Graeme Walker, Greenkeeper, Strathmore Golf Centre, Brian Scott, Greenkeeper, Hamilton GC, Matthew Jewell, Greenkeeper, St. Andrews Links Trust, Peteris Sadovskis, Student, SRUC (Elmwood), David Grant, Assistant Greenkeeper, Downfield GC, Ingmar Wolbert, Greenkeeper, Portstewart GC, Jonathan Hutchinson, Greenkeeper, Royal Portrush GC, Chris Mallon, Greenkeeper, Allen Park GC.

Midland

Grant Osborn, Affiliate, Steven Burrows, Course Manager, Rushcliffe GC, Lewis Wright, Greenkeeper, Sand Martins GC, Jason Hewitt, Greenkeeper, Elsham GC, Conor Leach, Greenkeeper, Sunningdale GC, Harry Lane, Greenkeeper, Sunningdale GC, Joe Brierley, Greenkeeper, Sunningdale GC, Carl Edwards, Greenkeeper, Barkway Park GC, Lewis Barker, Greenkeeper, Sand Martins GC, Darren Smith, Greenkeeper, Flackwell Heath GC, Samuel Searle, Greenkeeper, Rowlands Castle GC, Billy Weightman, Greenkeeper, Oakmere Park GC, Jim North, Mechanic, Belton Woods GC, Ethan Pilkington, Assistant Greenkeeper, Norwood Park GC, Calum Nathan, Assistant Greenkeeper, Sand Martins GC, Ashley Plummer, Assistant Greenkeeper, Coventry GC, Tom Coleman, Assistant Greenkeeper, Heythrop Park Resort, Gary Wade, Assistant Greenkeeper, Handley Wood Golf Course, William Dobson, Assistant Greenkeeper, Rushcliffe GC, Douglas Hamilton, Assistant Greenkeeper, Oxford GC, James Osler, Assistant Greenkeeper, Sand Martins GC.

Northern

Jake Wass, Deputy Head Greenkeeper, Oulton Hall GC, Christian Forrest, Assistant Greenkeeper, Dean Wood GC, Peter Taylor, Assistant Greenkeeper, Wigan GC, Gareth Meens, Assistant Greenkeeper, Brough GC, Stuart Bold, Assistant Greenkeeper, Carden Park GC, Wayne Atkinson, Assistant Greenkeeper, Avro GC.

South West and South Wales

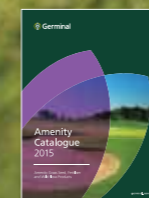
Andrew Steele, Greenkeeper, Ashburnham GC, David Chappell, Greenkeeper, Exeter Golf & Co Club, Matthew Borges, Greenkeeper, Celtic Manor Resort, Stephen Trickey, Greenkeeper, Pyle & Kenfig GC, Nicholas Coe, Greenkeeper, Tavistock GC, James Taverner, Greenkeeper, Minchinhampton GC, Sam McQueen, Greenkeeper, Cumberwell Park GC, Paul Glue, Greenkeeper, Rowlands Castle GC, Jon Keepen, Assistant Greenkeeper, Cumberwell Park GC, William Daws, Assistant Greenkeeper, Painswick GC.

South East Members

Stuart Bertram, Course Manager, Moor Park GC, Ian Sellers, Affiliate, Indigrow Ltd, Neil Sewell, First Assistant, Woking GC, Michael Collyer, Greenkeeper, Woking GC, Steven Bridgeman, Greenkeeper, Woking GC, Robert Hester, Greenkeeper, Moor Park GC, Patrick Redmond, Greenkeeper, Woking GC, Robert Harvey, Greenkeeper, Woking GC, Steve Dover, Greenkeeper, Moor Park GC, Mark Winnan, Greenkeeper, Moor Park GC, Richard Search, Greenkeeper, Moor Park GC, Gary Hawkes, Greenkeeper, Moor Park GC, Steve Nelson, Greenkeeper, Tenterden GC, Joe Webb, Greenkeeper, Woking GC, Stuart Walker, Greenkeeper, Old Fold Manor GC, Luke Green, Greenkeeper, Littlehampton GC, Nicholas Collins, Greenkeeper, Whitewebbs Park GC, Darren Marston-Smith, Head Greenkeeper, Moor Park GC, Bill Whybrow, Assistant Greenkeeper, Garon Park GC, James Procter, Assistant Greenkeeper, Windlesham GC, Ashley Hall, Assistant Greenkeeper, Purley Downs GC, Blue Revell, Assistant Greenkeeper, March GC, Jordan Bird, Assistant Greenkeeper, Kingswood GC.

AberMajesty Exclusively Bred

- A unique mixture combining the characteristics of two of our top UK bred varieties.
- The result, a sward that is extremely fine leaved with a very high shoot density.
- All Germinal products are supported by our expert technical sales representatives.
- It's not just a bag of seed, contact us to get the best from our products.



For further information please contact our technical sales representatives:
germinalamenity.com

Aber is a registered trademark of Germinal Holdings Ltd





Greenkeepers Training Committee

This month David Golding, GTC's Education Director, releases more exciting news in the world of greenkeeping apprenticeships and qualifications

As a Government approved Trailblazer organization, the GTC has once again made groundbreaking progress by having two further Apprenticeship Standards approved.

Following the approval of the Golf Greenkeeper Standard earlier in the year, two further standards have been approved by the Government. The latest standards to be approved are for an Advanced Golf Greenkeeper and Golf Course Manager.

David said: "This is a remarkable achievement, as the greenkeeping sector is not only the first organisation from the whole of the Land based sector to receive Government approval as a Trailblazer organization, but now has three sets of Standards approved."

Throughout the 2015 election campaign, the one subject all the political parties agreed on was the need for quality apprenticeships. This inspired the GTC to continue its work to review the current apprenticeship frameworks, taking into consideration the new Government Guidance, and also look to develop a new apprenticeship for a Golf Course Manager.

David added: "During my nearly 50 years working in the greenkeeping sector, I have never seen such an opportunity to ensure the profession can control its own standards of education, training and qualifications.

"I no longer need to attend meetings with representatives from agriculture, horticulture and even some of the more diverse industries to fight for specialist qualifications suitable for our sector.

"The Government clearly recognised that we can be a sector which collaborates to ensure both the employers and greenkeepers agree on education and training standards at all levels."

In Britain two of the leading Awarding Bodies, City & Guilds (C&G) and the Scottish

Qualifications Authority (SQA), both commit to working closely with the GTC to ensure the apprenticeship and qualifications are delivered to a high quality standard through a network of specialist colleges and training providers.

One main aim of the Trailblazer initiative, currently only applicable to England, is to improve the quality of apprenticeships by the introduction of graded, end point assessments. These assessments will be carried out by independent assessors.

England, Wales and Northern Ireland currently offer City & Guilds (C&G) qualifications which are included in the apprenticeship schemes with Scotland having an apprenticeship which includes Scottish Vocational Qualifications (SVQ's) awarded by the SQA.

A GTC working group, made up of representatives from golf club employers, BIGGA, England Golf and specialist colleges has, through a web based survey, consulted widely to ensure the new Standards are suitable for the next generation of greenkeepers and Golf Course Managers. Both the Advanced Golf Greenkeeper and Golf Course Manager Standards have the skills, knowledge and behaviours included to maintain and manage golf courses to the highest possible standards.

The technical working group is currently working with City & Guilds to develop the documentation and programmes of education, training and assessments to support the new apprenticeship standards.

The new apprenticeships will require new qualifications and there will be a new network of Approved Centres and Training Providers all looking to support employer's deliver the programme of education and training preparing the apprentice for their series of end point assessments.

Employers can still choose the Centre which best meets their needs. There will still be options such as online learning,



The GTC is funded by:



Contact Details

David F. Golding
GTC Education Director
and Standards Director,
Greenkeeper Training

01347 838640
david@the-gtc.co.uk

GTC
Aldwark Manor
Near Alne
York
YO61 1UF

www.the-gtc.co.uk
www.greenkeepertraining.com



You can follow the GTC on
Twitter @TheOfficialGTC

part-time off the job attendance at college but much will depend on the involvement of the Course Manager/Head Greenkeeper and cost to the employer.

Even more importantly, with the new apprenticeship, is the commitment by the employer as they will be required to commit a level of funding initially before receiving any Government funding support.

There are excellent financial incentives especially when recruiting a 16/17/18 year old but all of these will be fully explained by the chosen Centre.

Whilst the Trailblazer initiative currently only applies to England, all three new sets of standards will be useful in Scotland, Wales and Northern Ireland when the content of the apprenticeships and qualifications are reviewed.

We anticipate the only difference throughout the devolved Governments will be the levels of Government funding support.

The GTC will be looking to ensure that the Standards for each level of apprenticeship are consistent throughout Britain.

There are clear benefits of recruiting an apprentice and with a recognised programme of education and training plus, in the majority of cases, Government funding support, it is an investment to help grow the golf club business.

The three sets of Standards can be viewed on the GTC website, www.the-gtc.co.uk

For more up to date information on the apprenticeship developments also visit the website or call the GTC: 01347 838640.

Another result for Ringer

Suppresses casting worms

Highest approved dose rate

Can be used on all types of managed amenity turf

Wide application window - Spring to Autumn



Barclay Chemicals Manufacturing Ltd

Damastown Way, Damastown Industrial Park,
Mulhuddart, Dublin 15, IRELAND.
Tel: +353 1 811 2900 Email: info@barclay.ie
www.barclay.ie

Ringer contains carbendazim MAPP 13289. Use plant protection products safely. Always read the label and product information before use. For details of warning phrases and symbols relating to Ringer, and any further product information, please use www.barclay.ie

BUYERS' GUIDE

To advertise contact James on 01347 833 832 or email james@bigga.co.uk

CHALLENGING LOGISTICS



We were logistically challenged this year when we were asked to supply and deliver our finest golf turf to a very remote golf course under construction on the Isle of Jura on the west coast of Scotland.

Our goal was to ensure that the turf arrived in perfect condition – no mean feat during the warm summer months of July and August.

However, with 25 years of experience in hauling turf throughout Europe, all the deliveries were made without a hitch.

The turf is harvested early in the morning and loaded directly into our refrigerator lorry, set at 2C, for its journey up to Tarbert, three hours north of Glasgow.

It's reloaded on to a flatbed trailer for the next part of the journey by ferry the following morning.

It is taken to the port at Kennecraig where the 7am ferry sets sail for Port Askaig on the Isle of Islay, a two hour journey from the mainland.

Once on Islay it's only a short drive to the local ferry (pictured) for the hop over the Sound of Islay to Feolin on the Isle of Jura, where the final leg of the journey is a 20

minute road trip to the golf course.

The time from the turf being harvested to being laid on the green takes 26 hours, during which it is carefully looked after all of the way – that's what we endeavour to achieve for all our customers.

Whether it's golf turf to a remote Scottish Isle, or wildflower turf on a three-day journey to the Czech Republic, we will always find a way to ensure the turf arrives in the best possible condition.

Understanding how to transport a perishable product like turf successfully is all part of our service.

So if you're looking for revetting turf for bunkers, turf for greens, surrounds and approaches, and turf for tees please call us now for a quotation.

Alternatively, if you want to talk through our products or ask for advice please feel free to pick up the phone.

We will be more than happy to help. Rachel Goodyear

For further information please visit our website www.tillersturf.co.uk or call 01522 704949 or email Rachel@tillersturf.co.uk

CATEGORIES...

AERATION / AGRONOMY / ALL WEATHER SURFACES / ANTI SLIP / BUNKER / CONSTRUCTION / CLOTHING FOOTWEAR / COMPACT TRACTORS / CONSTRUCTION / DRAINAGE / HEDGES/ TREES / IRRIGATION / IRRIGATION CONSULTANTS / LAKE CONSTRUCTION LINERS / MACHINERY WANTED / RUBBER CRUMB / SOIL FOOD WEB / TOP DRESSING / TREE MOVING / TREE CLEARANCE / TURF USED MACHINERY / VERTIDRAINING / WASTE / WASHWATER TREATMENT

To advertise contact James on 01347 833 832 or email james@bigga.co.uk

ALL WEATHER SURFACES

GREENACRES
ARTIFICIAL GRASS
A division of A.T. Industries Ltd



ALL-WEATHER SURFACES FOR SPORT

- Course Tee Mats
- Sidelines/Warm up
- Range Mats
- Landscaping Grass
- Putting Greens
- Pathways

Tel: 01476 593050
Email: grass@atindustries.co.uk
www.greenacresartificialgrass.uk

CONSTRUCTION

M.Downes Earthworks

- Golf Course Construction Services
- Green and Tee Reconstruction
- Lakes and Reservoirs • Cart Paths
- Bunker Remodelling • Drainage
- Lakes and Reservoirs

07753 856510 01829 781767
mdownesgolf@live.co.uk

DRAINAGE

Turfdry

Golf Course Drainage

Survey / Design / Installation / Greens / Fairways / Bunkers / Complete Courses
Plastic Pipe / Turfdry Drainage System

For fast and friendly Nationwide Service

Contact Melvyn Taylor: 01283 551417
07836 259133 / melvyn@turfdry.com

www.turfdry.com

To advertise contact James on 01347 833 832 or email james@bigga.co.uk

Traditional drainage and Lytag banding of greens and fairways

North Staffs IRRIGATION

Tel: 01785 812706
E: NSIrrigation@aol.com
www.northstaffsirrigration.co.uk

IRRIGATION

irritech limited

Independent Irrigation Consultants

- Specialising in:-
- Existing system evaluation
 - System design & upgrade
 - Project management

Contact Roger Davey on:
01823 690216
www.irritechlimited.co.uk

Design Installation Service Irrigation supplies

North Staffs IRRIGATION

Tel: 01785 812706
E: NSIrrigation@aol.com
www.northstaffsirrigration.co.uk

TORO Hunter

To advertise contact James on 01347 833 832

MACHINERY WANTED

Invicta Groundcare
Equipment Ltd

We buy used golf course machinery

Contact: Steve Dyne
Tel No: 01474 874 120
Email: invictagroundcare@live.com

TOP DRESSINGS

Banks Amenity Products Ltd.

FOR ALL YOUR BULK SUPPLIES
NATIONWIDE DELIVERIES
01858 464346 / 433003
www.banksamenity.co.uk

LOVIE
QUARRY & CONCRETE PRODUCTS
Producers of quality Top dressings, Specialist sands, Rootzone soils, Grit, Gravel and Pathway materials for Golf Courses, Playing Fields and Sports Pitches
Cowbog, New Pittsigo, Fraserburgh, Aberdeenshire, AB43 6PR
Tel: 01771 653777
email: sales@lovie.co.uk
www.lovie.co.uk

Mansfield Sand

Pioneering the development and production of high quality sand-based products for over 150 years

Fibresand Fibrelastic

Contact Sharon Morris on
07932342044 or email
Sharon.morris@mansfield-sand.co.uk
www.mansfield-sand.co.uk

To advertise contact James on 01347 833 832 or email james@bigga.co.uk

TURF

Lindum
taking grass a step further

20 years of golf turf experience
5 golf grades including high bent Greens on USGA rootzone, RTF for stabilisation/drought tolerance, Wildflower Turf, and new Low Maintenance turf
Tel: 01904 448675
www.turf.co.uk

Tillers Turf
growers of fine turf

Specialist Growers of Turf for Golf Courses

Rootzone Turf for Greens
Grown on USGA rootzone, top-dressed throughout the year, and mown at 6mm.
Predominantly bent sward

Turf for Tees, Surrounds, Approaches and Fairways
Various mixtures including ryegrass/fescue, 100% fescue, and bent/fescue grown on sandy loam topsoil.

Bunker revetting turf
40mm thick
Small or big roll
Free loan of big roll laying frame

Tel: 01652 678 000
www.tillersturf.co.uk

USED MACHINERY

www.usedturfmachinery.com

To advertise contact James on 01347 833 832

WASTE/WASHWATER TREATMENT

Waste2Water

BIOLOGICAL VEHICLE & EQUIPMENT WASH-OFF SYSTEMS

ESD Waste2Water Europe Ltd.
Tel: 01782 373 878
Fax: 01782 373 763
E-mail: info@waste2water.com
Web: www.waste2water.com

Recruitment



Aldeburgh Golf Club Deputy Course Manager

Aldeburgh Golf Club, founded in 1884 has 27 holes; the main course is one of the finest in East Anglia and is currently 80th in Golf World's top 100 courses in Britain and Ireland. The courses are situated on heathland with fescue dominated turf, maintained to the highest standards all year round.

Applicants should possess the following attributes:

- An enthusiastic and positive attitude
- A proven record of continuing professional development
- Excellent practical skills and technical knowledge relating to machinery and PC controlled irrigation systems
- A sound understanding of the fundamentals of turfgrass management
- The ability to lead, motivate, train and develop an enthusiastic and well qualified greenkeeping team
- A good working knowledge of Health and Safety regulations and their practical application

This is an excellent and challenging opportunity for a highly motivated individual to join our team of dedicated greenkeepers in continually improving turf quality and presentation on the course. An attractive package will be offered, including, a staff pension scheme. 3 bedroom accommodation is available if required.

Please apply by email with CV and covering letter to:
Mark Broughton, Course Manager
greenkeepers@aldeburghgolfclub.co.uk

Closing date for applications - 21st September 2015

Assistant Greenkeeper

Chiltern Forest Golf Club is currently looking for a qualified Greenkeeper. The ideal applicant will possess

- Ability to operate a range of green keeping equipment
- Relevant qualifications
- A strong work ethic and ability to demonstrate they can work as part of a team and as an individual
- Full driving license

In return we will offer a competitive salary based on qualifications and experience, BIGGA membership and Club contribution pension scheme. This is a full time position.

Please forward a CV along with a covering letter and salary expectation to:
Neil Clayton
generalmanager@chilternforest.co.uk



Experienced Greenkeeper

Slinfold Golf and Country Club are looking for an experienced Greenkeeper to join their team.

We need someone who is:

- Motivated
- Has a minimum of 3 years experience
- Qualified to NVQ Level 2, with PA1, 2, 6 (Spraying)

Please send your c.v to: Mr Dan Saunders, Head Greenkeeper, Slinfold Golf & Country Club, Stane Street, Slinfold, West Sussex RH13 0RE or email dan.saunders@ccgclubs.com with 'Greenkeeper Vacancy' as the subject line. Salary on application.

Closing date for all applications is 28th September 2015

Apprentice Greenkeeper

Swinley Forest Golf Club is an 18hole Harry Colt designed private members club, located in Ascot Berkshire. This is a fantastic opportunity for someone to start their career at a golf club that is rated in the world's top 100 courses.

We are looking for an Apprentice Greenkeeper to join our existing small team. The right candidate will be enthusiastic and a keen eye for detail, they should also have an interest in golf.

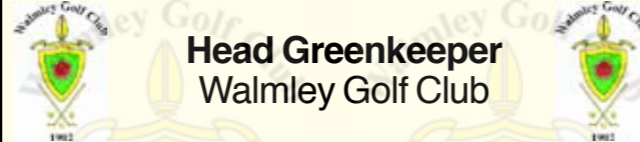
The right person will be looking to progress themselves in the industry, full training will be provided.

The salary is based on a 40 hour week with a range of benefits.

Weekend and bank holidays are worked on a rota basis and paid at overtime rate.

Applicants should apply in writing or email with a covering letter and C.V. to the head greenkeeper.

Please send your details to: The Secretary, Swinley Forest Golf Club, Coronation Road, Ascot SL5 9LE or office@swinleyfgc.co.uk



Head Greenkeeper Walmley Golf Club

Walmley Golf Club is a premier golf club in the West Midlands situated in the affluent suburb of Sutton Coldfield, six miles north of Birmingham. Golf has been played on this parkland course since 1902 and the club has a long history of competition success and runs a full social and golfing calendar. With over 600 members, Walmley remains a successful private members' club with a full membership.

We are seeking a Head Greenkeeper to form part of the new senior management structure and be an integral person in delivering the objectives of the board and member expectations.

For further information or to apply, please email your CV and letter of application to Tim Gilpin, General Manager on T.gilpinGM@walmleygolfclub.co.uk Closing date 18th September

Wyke Green Golf Club, Middlesex Experienced Greenkeeper

We are seeking an enthusiastic and experienced Greenkeeper to join our team at Wyke Green Golf Club. Wyke Green Golf Club is a highly respected 18 hole parkland course in Middlesex where quality standards are of the utmost importance. Candidates will need to be a team player, competent and eager to take on further responsibilities.

Applicants must be able to demonstrate knowledge of maintaining and developing a golf course to the highest standards.

Certification in PA1, PA2 and PA6 and NVQ Level 2 or above is essential. Salary is dependent on experience and will be based on a normal 35 hour week. Weekend working on a rota basis will be required and paid at overtime rates.

In the first instance please apply in writing (email or letter) to: The Secretary/Manager, Wyke Green Golf Club, Syon Lane, Isleworth, Middlesex, TW7 5PT.

Email to: Secretary/Manager Mr Andy Heath office@wykegreengolfclub.co.uk Please cc: Course Manager Mr Tony Dyke tonydyke@btconnect.com

Closing: 18th September 2015

Wolstanton Golf Club 1904 Assistant Greenkeeper

The course is arranged over 18 holes and mature parkland.

We are now looking for an additional Assistant Greenkeeper reporting to the Head Greenkeeper.

NVQ level 2 in Amenity Horticulture – Sports Turf or equivalent. Experienced, self-motivated and demonstrating a genuine commitment.

The main duties of the role include:

- Assistance with all aspects of the day to day course management and delivery of course development projects;
- An ability to operate and maintain state of the art course maintenance equipment;

Candidates may apply by e-mail, providing a relevant CV including qualifications and references to: paulhan35@btopenworld.com

BARONESS Turfcare Equipment

Quality on Demand



The Baroness LM2700 fairway mower

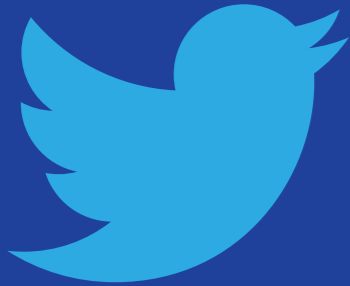
For more than 100 years the Kyoisha Co. of Japan has been making first-class, high quality, user friendly machinery for its customers. Since late 2007 customers in the U.K. have been sharing in that experience, finding out just how low the whole life service costs of Baroness mowers can be!

To find out how you too can benefit from the remarkable cost savings experienced by owning a Baroness mower, call or e-mail for your demonstration today!

e-mail: sales@baronessuk.com
tel: 01256 461591

www.baronessuk.com

Kyoisha UK Ltd. a subsidiary of
Kyoisha Co. Ltd. of Japan



@BIGGALtd

A new page featuring the best Tweets and pics from the industry – don't forget to tag @BIGGALtd to give yourself a chance of being featured!

Our favourite tweets this month...

@longhirstgolf

Gorgeous scene at close of play this evening @BIGGALtd @NldSport @negolfer

@gavinwhiteNI

Low lying mist over the Dunluce 1st @royalportrush @greenkeepingire @BIGGALtd

@wearegerminal

Congrats to Alistair Eccles winner of Patrons Shield 2015 @BIGGALtd Scottish Golf Championship held @PortlethenGC in August @MoretonGerminal

@AnthonySunney

The course always looks best in The Sun! #WimbledonPark #Greenkeeping #Golf @BIGGALtd

@frenchp76

The par 3 course looking good for tomorrow's greenkeeper comp @BeedlesLake @Biggaeastmids @BIGGALtd #golf

@gord_mckie

"@Berry97 @TheHomeofGolf @BIGGALtd Now to get some #barfescue back on these fairways.

@CentenaryHGK

punching in the sand with a 6mm needle tine @fenwics @Johnmyles83 @ToroGolf @BIGGALtd #lettingthembreathe

@greenjaey

8 days out from coring + solid tine + 45t/ha pure sand. #happygk @BIGGALtd

@greenkeeperdave

@BIGGALtd have you guys a mention in my @MidlandsGolfer page , great job by all the guys and girls at the open

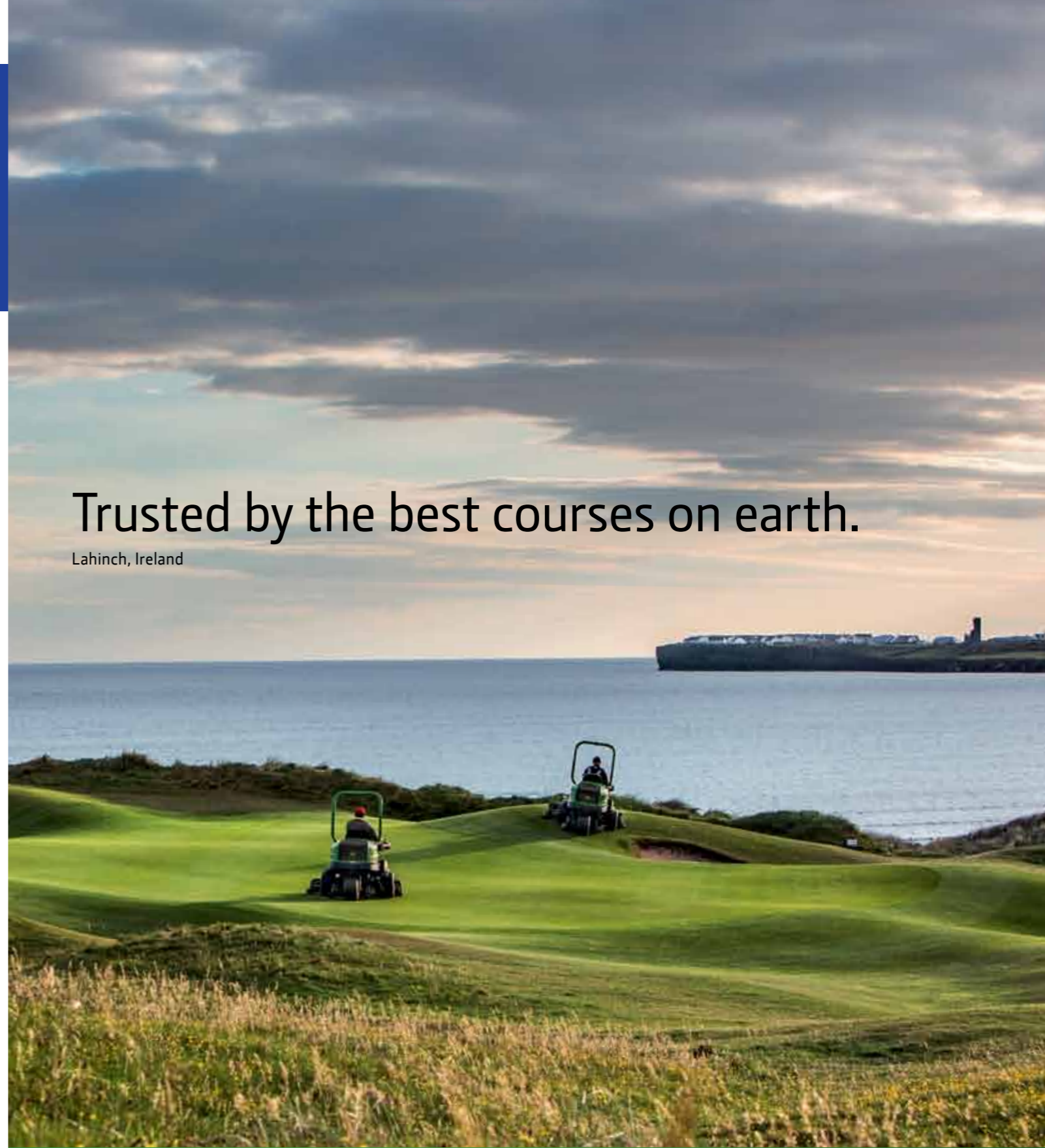
@SheringhamGC

Looking forward to working at Woburn GC for the British Masters in October 6-11th @BIGGALtd @BIGGAMidlandREG



Trusted by the best courses on earth.

Lahinch, Ireland

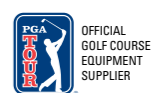


There's a reason why the best courses trust in John Deere: our mowers deliver unmatched cut quality, creating an ideal playing surface on tees, greens, fairways and roughs.

See for yourself. Contact your dealer for a demonstration.

Freephone 0800 085 25 22

John Deere Golf: Trusted by the best courses on Earth – Video on www.johndeere.co.uk/bestcourses/



JohnDeere.com

TORO

The Toro® ProCore Series

Total Aeration

**The Toro ProCore aerator series.
The complete choice for the perfect finish, everywhere.**

SALTEX
SPORTS AND FINE LANDSCAPING TRADE EXHIBITION
Stand H010



THE PROCORE 1298 FOR LARGER AREA AERATION

No matter where – healthy turf starts down at the roots. That's why Toro developed the complete range of walk-behind, tractor mounted and deep tine aeration products, giving you the machines to professionally aerate your turf from tee to green.

Toro know regular aeration relieves soil compaction, increases drainage and promotes deeper root growth for vigorous, and healthy turf. And with years of research, customer input, testing and unrivalled attention to detail – the expansive Toro ProCore aerator series is the most productive and efficient on the market. So whatever the application, the ProCore series from Toro ensures your course maintains a perfect finish.

Full product details at www.toro.com

Put us to the test. For a free onsite demonstration, call Lely on 01480 226800

+

**TYM
IS THE IDEAL
PARTNER FOR
THE PROCORE
SERIES**



PROCORE 648



PROCORE 864



PROCORE 1298



PROCORE SR54-S



PROCORE SR72



OFFICIAL
SUPPLIER

Lely. Your partners in turfcare. Call 01480 226800.

Lely not only brings you Toro. Talk to us, too, about TYM compact tractors and Otterbine water management systems.



partners in turfcare