

2 weeks to BTME 2015

# GI

# GREENKEEPER INTERNATIONAL

Published by the British and International Golf Greenkeepers Association

£5.50 **JANUARY 2015**



**Inside...**

## **BTME 2015 - ARE YOU READY?**

**BTME**

**THE BIGGA TURF MANAGEMENT EXHIBITION AT HARROGATE 18-22 JANUARY 2015**



**Also... EDDIE BULLOCK**

**ALSO INSIDE... BACK TO SCHOOL : REMEDY OAK : FINANCE**





# Thank you see you in 2015

The Association would like to thank all of our BIGGA Partners and BIGGA Education Supporters for their fantastic support throughout last year. Your invaluable backing underpins the Association's considerable investment in Continuing Professional Development and all our educational activity. We urge members to support them in 2015 and beyond.



**Individual Contributors:** Steven Tierney MG, Chris Lomas MG, Andrew Campbell MG CGCS, W J Rogers, Sam Langrick, Espen Bergmann, Nick Gray, Steve Dixon, Richard McGlynn, Douglas Duguid, Jaey Goodchild, Michael Beaton, David Barker, Greg Evans, Frank Newberry



## BIGGA



**BIGGA President**  
Sir Michael Bonallack, OBE

**BIGGA Board of Management Chairman**  
Chris Sealey  
**Vice Chairman**  
Les Howkins

**BIGGA Past Chairman**  
Tony Smith

**BIGGA Board Members**  
Rob Wellford, Stuart Greenwood, Arnold Phipps-Jones, Jeremy Hughes, Kenny MacKay, George Barr, John Keenaghan

**BIGGA Chief Executive Officer**  
Jim Croxton

**BIGGA General Manager**  
Tracey Maddison  
traceymaddison@bigga.co.uk

**BIGGA Head of Member Development**  
Sami Strutt  
sami@bigga.co.uk

**Contact Us**  
BIGGA House, Aldwark, Aine, York,  
YO61 1UF  
info@bigga.co.uk  
www.bigga.org.uk  
Tel - 01347 833800 | Fax - 01347 833801

## GREENKEEPER INTERNATIONAL

The official monthly magazine of the British and International Golf Greenkeepers Association Limited.



**Production**  
**Design & Brand Executive**  
Tom Campbell

Tel - 01347 833800  
ext 513  
tom@bigga.co.uk



**Editorial**  
**Communications Executive**  
Steve Castle  
Tel - 01347 833800  
ext 510  
steve.castle@bigga.co.uk



**Advertising**  
**Business Development Manager**  
Jill Rodham  
Tel - 01347 833800  
ext 519  
Fax - 01347 833802  
jill@bigga.co.uk

**Printing**  
Warners Midlands Plc, The Maltings, Manor Lane, Bourne, Lincolnshire PE10 9PH  
Tel - 01778 391000 | Fax - 01778 394269

Contents may not be reprinted or otherwise reproduced without written permission. Return postage must accompany all materials submitted if return is requested. No responsibility can be assumed for unsolicited materials. The right is reserved to edit submissions before publication. Although every care will be taken, no responsibility is accepted for loss of manuscripts, photographs or artwork. Opinions expressed are not necessarily those of the Association, and no responsibility is accepted for such content, advertising or product information that may appear. Circulation is by subscription. Subscription rate: UK £50 per year, Europe and Eire £65, Rest of the World £95. The magazine is also distributed to BIGGA members, golf clubs, local authorities, the turf industry, libraries and central government.



ISSN: 0961-6977  
© 2013 British and International Golf Greenkeepers Association Limited

## WELCOME FROM BIGGA



BIGGA Welcome Celebration at BTME 2014

# A big year for BIGGA

**A very Happy New Year to all our members and friends, let us hope that 2015 is a good one for the greenkeeping and golf industries and builds on the reasonable progress of 2014.**

It is shaping up to be a big year for BIGGA; the proposed new Governance structure we hope the membership will adopt at the forthcoming AGM will help the Association to be more coordinated and focused at all levels, and put succession plans in place to ensure our future.

The Young Greenkeepers Committee, who meet formally for the first time later this month will provide both our team and board members with the insight to better serve the needs of the next generation of BIGGA members. We will also continue to provide further member benefit opportunities and increase our educational activity at Section, Region and National levels.

**After a challenging few years BIGGA is now in a stable and positive business situation - all aspects of our activity are in growth.**

At their recent meeting, which took place at Woodhall Spa, the headquarters of England Golf, the Board of Management commenced a formal Strategic Planning process, which will take shape over the next few months.

The ambition is to produce a Strategic Plan that will provide a clear direction for the Association and also detail very clearly to the wider golf industry the role BIGGA and its members intends to take to positively influence the sport.

All members, as well as our industry partners and commercial clients, will be consulted to ensure the Plan is one that suits the entire industry. I hope you are able to take the time to give us your views and help shape the Association's future.

**BTME is just around the corner and the signs are extremely good that we will enjoy a fantastic conference, exhibition and the various associated social and networking events that are part of our annual festival of greenkeeping.**

The Continue to Learn programme has been very well received, and I am delighted that the signs are pointing towards record numbers of delegates. Continue to Learn has had a Ryder Cup flavour to it recently and I'm pleased this continues in 2015 with both Steve Chappell's review of the 2014 Gleneagles event and also an insight into how Chris Tritabaugh plans on preparing Hazeltine National for 2016.

**I am particularly looking forward to the BIGGA Welcome Celebration on the Tuesday evening of BTME.**

The opportunity to celebrate all that is good in the greenkeeping industry amongst friends and colleagues is one to savour and I am delighted that our guest speaker, Andrew Cotter from the BBC, has agreed to share tales from the golfing industry. I know we will be royally entertained.

I look forward to seeing very many of you in Harrogate for BTME.

Enjoy the read.



Jim Croxton, BIGGA CEO



# GI CONTENTS

A look at what's inside the magazine this month

**JANUARY 2015**

## FEATURES

### 20 BTME 2015 Preview

The latest from the exhibitors, and Welcome Celebration news

### 32 Do you encourage the intimacy factor?

BTME speaker Eddie Bullock writes

### 36 Join the Support Team at Wentworth

Apply to be a volunteer greenkeeper at the BMW PGA Championship

### 38 Finance your fleet

Machinery tips from John Deere

### 40 Back to School

How a two-man greenkeeping team are scoring top marks

### 42 A Greenkeeping Remedy

News from Remedy Oak Golf Club on their greens replacement project

### 46 Moment of Truth

Henry Bechelet and Dr Andy Owen from Everris - trials on your course

### 48 Get with the Programme

Headland Amenity advises you how to plan a fertiliser programme

### 50 New Year, New Fleet

Kubota's compact machinery

### 52 Focus on Ryegrasses

Barenbrug on ryegrasses

### 54 Growing, Mowing and Spraying

Dr Terry Mabbett writes

### 58 We Want You

Join the BIGGA Open Support Team 2015

**BIGGA TURF MANAGEMENT EXHIBITION BTME**

**HALL A**  
A1-A25

**HALL B**  
B1-B25

**HALL C**  
C1-C25

**HALL M**  
M1-M25

**22-23**



## REGULARS

- 3 Welcome from BIGGA
- 6 Chairman's Word
- 8 Newsdesk
- 14 Membership News
- 16 L&D News
- 60 Around the Green
- 68 Greenkeepers Training Committee
- 70 Buyers Guide
- 72 Recruitment
- 74 @BIGGAltD

**@BIGGAltD**

**GI GREENKEEPER INTERNATIONAL**

Published by the British and International Golf Greenkeepers Association £5.50 JANUARY 2015

**2 weeks to BTME 2015**

**BTME 2015 - ARE YOU READY?**

THE BIGGA TURF MANAGEMENT EXHIBITION AT HARROGATE 18-22 JANUARY 2015

ALSO INSIDE... **EDDIE BULLOCK**

ALSO INSIDE... BACK TO SCHOOL : REMEDY OAK : FINANCE

**British and International Golf Greenkeepers Association**





# Chairman's Word

National Chairman, Chris Sealey, gives his thoughts for the month

## An unforgettable year ends at BTME



**"BIGGA was invited to support the Gleneagles team and the volunteer greenkeepers at The Ryder Cup for the whole week - for the first time"**

**All too soon, it's time for me to put together my final Chairman's Word column. It has been a truly unforgettable year, and it's been an absolute privilege to meet so many members of BIGGA, industry partners and valued clients.**

It has been an incredibly busy year, an enormous amount of time has been taken up on general board business and in representing the Association.

I've loved the experiences and meeting new people, but I'd like to share my schedule for the first week of December as an example of how busy it has been.

I left home at 6.30am on a Sunday to drive up to Woodhall Spa Golf Club, headquarters of England Golf, for our final Board of Management meeting for 2014.

We had 48 hours of Governance, Strategic Planning and regular Board

business as well as meetings with England Golf and local section representatives.

On Tuesday evening I headed home, then on Wednesday I spent the day working at Chippenham. I was at work again Thursday morning, before leaving at lunchtime to head to Milton Keynes for the IOG Conference and Awards in partnership with BIGGA where I had the privilege of accepting one of the Awards on behalf of Ian Kinley, Course Manager at Royal Porthcawl.

I left early the next day to return to Chippenham, totalling 620 miles driven for the week, and worked the weekend to ensure the course was where I wanted it to be. As I've said, there are many fantastic benefits to being BIGGA Chairman, but the time spent away from home, and long hours travelling should not be overlooked!

All the hard work from the Board, and everyone involved with BIGGA, has led

to positive results. John Deere, Toro and Ransomes Jacobsen are returning to BTME 2015. The Board has concluded a comprehensive governance review and the most successful set of accounts for years have been recorded.

The Ryder Cup at Gleneagles stands out, and the fact BIGGA was invited to support the committed team and the volunteer greenkeepers on site for the whole week - for the first time - shows how our recognition in the industry is increasing. What a fabulous week. The same could be said of The Open at Royal Liverpool. The BIGGA Open Support Team really stood out, not just because of their brightly coloured shirts on some of the days, but because of their commitment, professionalism...and a real sense of fun and enjoyment too.

Hard greenkeeping work came to the fore during the BMW PGA Championship



at Wentworth in May, and the BIGGA National Championship at Liphook in October. Both of these events were hit by torrential rain either side of what turned out to be a pretty decent summer.

However, teams at both facilities pulled together and they should all be hugely proud of their efforts to produce beautifully presented golf courses.

Other highlights included the celebrations marking the 25th anniversary of Toro Student Greenkeeper of the Year, where it was wonderful to catch up with so many previous winners, and particularly pleasing to see that so many have chosen to remain in and progress through this great industry.

It has been terrific to chair such a committed and enthusiastic Board of Management, and I strongly believe the Association is heading in the right direction.

Education is booming, with Continue to Learn going from strength to strength, our revamped CPD system engaging more members than ever before and even seminars presented to greenkeepers during the Ryder Cup.

The Future Turf Managers' Initiative is really making its mark as the third event approaches, the GIS Show sees the opportunity for further education for some members and other events such as the GCSAI Conference demonstrated how vital education is becoming (thanks to their president Michael McFeely and his wife Liz for their fabulous hospitality during our time in Dublin). I also feel we've really strengthened our relationships with the likes of the GCSAI, FEGGA and GCSAA.

I've tried to get around as many of the Regions and Sections as possible - apologies to those I've missed. I've enjoyed the Regional Conferences and various Section events. Thanks to all the members who go out of their way and use their own time to organise golf days, seminars and fundraising events and I'd urge you

to support them whenever possible. Also, everyone at BIGGA remains hugely grateful to the trade members who support us in dozens of ways - from exhibiting at BTME to supporting our educational events.

The BIGGA Partner and BIGGA Education Supporter programmes have proved very beneficial for both sides, building on the long-term success of the Gold and Silver Key initiative.

A huge thank you must go to all at Chippenham Golf Club, and in particular General Manager Leighton Walker, my Deputy Seb Cavilla, Steve Randall, and to my long-suffering partner Pat for their support. Also thank you to Jim Croxton, Tracey Maddison, the Regional Administrators and all the team at BIGGA House.

BTME in general is on the up and up, and I've heard so many comments about not only how the show is buzzing but also how approachable and professional the BIGGA team are, so well done all.

But it is important not to rest on our laurels, the industry is constantly changing as was shown by the IOG's recent decision to move the date of Saltex and relocate it.

BTME 2015 is bound to be emotional for me as I hand over to Les Howkins MG, Course Manager at The Richmond Golf Club. I am sure he will be a brilliant Chairman.

See you in January for what is sure to be another memorable BTME...and sadly my last week as Chairman. I will be spending more time at Chippenham - I don't know if that's a relief to the team there or not! We've had a good year, opened new holes for play, we're now preparing to install a bore hole, and I have to say I am looking forward to more hands-on greenkeeping in 2015.

### Contact details

Email Chris at [coursemanager.chippenhamgolf@btconnect.com](mailto:coursemanager.chippenhamgolf@btconnect.com) or contact him direct on 07817 294632



**Who said...**

**"Microlite is one of the best fertilizers I have ever used"**

**Find out on STAND C62**





## TRIBUTES TO MIKE BEARDALL

**Everyone at BIGGA was saddened to hear of the death of Mike Beardall, former editor of The Groundsman magazine.**

An avuncular and cheerful figure, Mike was a terrific supporter of many of the industry's events including BTME, and hugely popular and well-respected among the turf industry press.

Pitchcare's Peter Britton has written the following tribute:

"It is with much sadness that we inform you of the passing of Mike Beardall, the former editor of The Groundsman magazine.

"Mike began his career in journalism working on the Banbury Guardian in Oxfordshire, and worked on other newspapers as a reporter, feature writer and, later, production editor of Surrey and South London Newspapers Ltd.

"In the Eighties he joined the Daily Mail group as a sub-editor on Weekend magazine, later becoming chief sub-editor. In 1982, he worked on the launch of the Mail on Sunday, and also undertook sub-editing on the Sunday Express, Daily Express and the Daily Star.

"In 1987, he became editor of the Middlesex Chronicle and deputy group editor of Surrey and West London Newspapers Ltd. In 1990, he became editor of the West Sussex Gazette and, in 1991, as managing editor of Merlin Publications Ltd, launched a national business magazine for homeworkers called Home Business followed, in 1992, by a magazine for small businesses called Your Business.

"In 1995, Mike launched Oakfield Media, offering a full publishing, public relations and media training service. He was part of the team providing media training programmes for EMAP and other magazine publishing groups.

"As part of his publishing portfolio he became editor of The Groundsman, the official magazine of the Institute of Groundsmanship – a post he held for eleven years, until December 2006.

"In recent years, Mike occupied his time by producing newsletters and public relations material for a number of companies, including P&O, The Fowler Group, DJ Turfcare and Speedcut Contractors, as well as writing assignments for consumer and trade magazines and newspapers.



"Mike was a 'gentle' man in every sense of the word. He handled adversity in both his business and private life with dignity and always made himself available to industry colleagues, with the minimum of fuss, when support and assistance was required.

"He was the consummate professional and will be sorely missed by all who knew him.

"All of our thoughts at this time are with his son Ben, his daughter Kate and two young grandchildren, Harmony and Ed."

## BIGGA AND JACOBSEN POSTER CAMPAIGN

Within this edition of GI you will find the first of four posters we will be issuing throughout 2015 aiming to educate golfers at your club.

The posters, supported by BIGGA Partner Jacobsen, are intended for BIGGA members to place in their clubhouse notice boards to explain to members and visitors why greenkeepers aerate, topdress, put winter greens in place...all topical issues through the year.

Each poster is designed to be eye-catching and informative, containing briefly summarised key points on greenkeeping projects during the seasons.

This follows on from the success of our recent Pitchmarks poster which raised awareness in clubs of this serious issue, and became very visible on social media.

Remember this is still available to download by clicking on the 'Education' tab on the BIGGA website and visiting the 'Pitchmarks' tab on the left hand side.

Commenting on the poster initiative, Karen Proctor, Ransomes Jacobsen's recently appointed Marketing and Communications Manager – International said: "One of the most contentious issues between club members and the greenkeeping team is course maintenance and the perceived or actual disruption to the playing surfaces that it involves.

### WINTER PLAY ON GOLF GREENS



The use of temporary greens preserves the surfaces of the main greens and provides an acceptable alternative to closing the course

"To help BIGGA members educate their club members on the importance of maintenance procedures and the effects on the long-term playability of their courses, we are delighted to sponsor the production and distribution of these posters. This is further evidence of our continued support of BIGGA and its members."

If you have any feedback regarding the posters please contact [steve.castle@bigga.co.uk](mailto:steve.castle@bigga.co.uk)

## GREENKEEPER JOINS BAYER

Bayer has appointed Greg Collins as National Account Manager for Environmental Science in Ireland. He brings with him 17 years of practical hands-on experience.

Greenkeeping is in his blood. Choosing to follow in the footsteps of his two brothers by starting his career as a greenkeeper, he went to study at Elmwood College in Scotland in 1992.

Greg then moved to Germany to work as an assistant greenkeeper for two years and for a further three years as head greenkeeper at Schloss Schwobber Golf Hotel. He then returned to Ireland where he was head greenkeeper for 11 years at Charleville GC, Cork.

He will be managing all commercial products and working with Bayer's distributors in Ireland, providing both advice and expertise.

On his new appointment, Greg said there is a strong team dynamic at Bayer and an exciting career path ahead. "This



is a great opportunity, and I'm looking forward to getting into my new role, and working with the team and supporting our key partners.

"My previous experience will provide a thorough understanding of the greenkeeper's and groundsman's role; enabling me to offer the very best technical support and advice to customers."



**Who uses...**  
**Impact XP linemarking paint on a world renowned sporting arena**

**Find out on STAND C62**





## GREENKEEPERS HONOURED AT IOG AWARDS



**The winners of the inaugural awards for golf greenkeeping excellence have been announced at the Institute of Groundsmanship (IOG) annual Industry Awards, in partnership with BIGGA.**

In a prestigious awards ceremony at Milton Keynes' stadium attended by more than 380 of the UK's and Europe's leading grounds care experts, as well as dignitaries from the governing bodies of sport and influential sports administrators, the winners of the three golf categories were:

BIGGA BASF/Sherriff Amenity Young Greenkeeper of the Year - Stuart Imeson, Dunstanburgh Castle Golf Club

BIGGA Baroness Championship Greenkeeping Performance of the Year - Ian Kinley and the team at Royal Porthcawl Golf Club

BIGGA Ransomes Jacobsen Greenkeeping Achievement of the Year - Edward Ainsworth from Avro Golf Club

The IOG annual Industry Awards, in partnership with BIGGA, recognise leadership, innovation and outstanding achievement across every aspect of grounds care - from grassroots pitches to professional stadia from both the professional and volunteer sector. This year, for the first time, three golf greenkeeping categories were added.

Stuart Imeson contested the BASF/Sherriff Amenity Young Greenkeeper

of the Year award with Ben Evans from Altrincham Golf Club.

Stuart (pictured) became Head Greenkeeper at Dunstanburgh Castle, a links course on the North East coast situated on National Trust land, aged 18. Managing a small and equally youthful greenkeeping team on a tight budget, he's implemented an ambitious and progressive action plan to ensure excellent surfaces all year round.

Ian Kinley and team at Royal Porthcawl pipped Scott Fenwick, Steve Chappell and the Gleneagles Ryder Cup greenkeeping team to the Baroness Championship Greenkeeping Performance of the Year.

In January and February this year, Royal Porthcawl on the South Wales coast was so badly affected by flooding that at the height of the bad weather the first three holes were under ten feet of water. This was just a few months prior to the British Senior Open, yet the team pulled together and the tournament took place as scheduled to great praise from organisers and competitors alike.

Edward Ainsworth contested the Ransomes Jacobsen Greenkeeping Achievement of the Year award with Rhys Butler from Royal St David's Golf Club.

Edward is leading the way in environmentally sustainable course management, promoting diverse wildlife through creating several new wildflower areas. This has helped encourage a huge

variety of species on to the site. As a qualified beekeeper, he has established hives on the course and trained other course managers in this area.

BIGGA CEO Jim Croxton said: "BIGGA was thrilled to be invited by the IOG to be part of the awards evening. The opportunity to celebrate greenkeeping achievements is always welcome and to do so at such an august occasion was a huge plus.

"The three winners in the BIGGA categories demonstrated great skill, huge passion and extraordinary commitment to providing excellent surfaces for golfers of all levels.

"The range of facilities nominated also vividly showed the incredibly diverse nature of the greenkeeping industry. Congratulations to all the winners and nominees in all the categories."

IOG chief executive Geoff Webb added: "We are particularly pleased that this year BIGGA has worked with us to promote excellence in greenkeeping, to mirror the high standards of groundsmanship that the IOG Industry Awards have showcased for the past six years.

"All award winners demonstrate the skill and dedication of the teams and individuals who - week in, week out in all weathers - make such a vital contribution to sport."

Congratulations to the winners, and to all the greenkeepers who were nominated.



## FLAXBY COURSE TO CLOSE

Recently, the 11-strong greenkeeping staff at The Flaxby Park Golf & Country Club, located close to Harrogate, North Yorkshire were informed that the 27-hole facility will close permanently from March 31 2015.

It has been reported that the owners of the site are planning to build 2,500 homes on the location.

The main course, which opened in 2004, was sown with creeping bent greens and was billed as one of the finest in the country. Ambitious plans to host European tour events and even a Ryder Cup were made.

Golf Course Superintendent Daniel Burrows and his team are naturally very disappointed with the news; the team

has worked hard and put in a great deal of time and effort into developing and improving the course. In 2014, many members and guests commented that the course was in the best condition it has ever been, reflecting the sustained level of commitment to mature the course over the past decade.

Daniel, who was involved in the construction and growing in stages prior to the course opening in 2004, and his experienced, qualified and dedicated team, are now looking for employment options as they prepare to close the course for good at the end of March.

If anyone is interested in employing any of the team, please contact [mrdannyburrows@hotmail.com](mailto:mrdannyburrows@hotmail.com)



## NEW SCOTTISH CHAIRMAN

The new Scottish Chairman is Jim Paton, Head Greenkeeper at West Kilbride Golf Club. Jim, from the South West of Scotland (formerly Ayrshire) section takes over the reins from Andy O'Hara. During the handover, Jim paid a glowing tribute to Andy and added that he hopes to continue his good work over the next few years.

**RT**  
rigby taylor



**Who achieves...**  
**Great success with R9 seed on an internationally acclaimed ground**

**Find out on STAND C62**

**BTME**





## TOP LINE UP AT SCOTTISH CONFERENCE

The Scottish Conference will be held on Tuesday 3 March at the Carnegie Conference Centre, Dunfermline. We have another fantastic line up this year and remember that 6 CPD credits are available to those that attend!

Firstly Gordon Irvine MG will discuss the 'Discovery of Askernish', a true hidden gem on the Island of South Uist. This is a unique part of golfing history and is sure to be interesting to all delegates.

This year, the conference has a distinctive American theme. Our next presenter is Carmen Magro who will provide a talk titled 'Perfecting your Rootzone to Optimise Turfgrass Performance and Health'.

Our thanks to Greentech (Scotland) for arranging Carmen's participation in the conference.

Robert Patterson from Royal Aberdeen Golf Club will close the morning session by providing his views on his club's successful holding of the Scottish Open in 2014.

After lunch our chairman Jim Paton will provide his address and will present a small token of congratulations to our Toro Student of the Year candidate.

The stars and stripes will be out again when Dr Stan Kostka presents 'Getting the Balance Right'. Stan works with another of our patrons, Farmura Environmental, and we are delighted to have him come along on the day to present.

Finally, we all know that the European Team successfully defended the Ryder Cup at Gleneagles in 2014 so what would be better than to have Steve Chappell, Head Greenkeeper return to give us his thoughts on the success of the week and what challenges cropped up along the way!

Further details on the conference can be found on the BIGGA and Scottish Region's websites, including the booking form.

Alternatively contact John Young, Regional Administrator via email on [johnyoung@bigga.co.uk](mailto:johnyoung@bigga.co.uk) for further details.

*John Young*



## NEW MAN AT NEWQUAY

Congratulations to Dan Kendle who has been appointed Head Greenkeeper at Newquay GC.

Dan makes the move to the Cornish links course from Woodhall Spa Golf Club, where he has worked as a greenkeeper since March 2000. Six years ago he became First Assistant Greenkeeper at the Hotchkin Course at Woodhall.

He said: "I used to live in the Cornwall area and this seemed the perfect opportunity to return, I'm really looking forward to making my mark."

"The location is stunning with a nice course set-up. The greens are good, mainly bent-fescue, but I think they can be improved even further. There is a lot of competition from other courses nearby so it's vital that our standards are high. I'm a big believer in basic greenkeeping principles so there will be plenty of hollow coring and overseeding. It's a big change from Woodhall Spa, but I'm relishing the challenge."

## DUMFRIES AND GALLOWAY TURF CLUB



Members in the Dumfries & Galloway area recently created a Turf Club that will arrange regular get-togethers to maximise education opportunities and increase engagement with the association.

A course walk was arranged at Southernness Golf Club on 19 November with 23 in attendance. They were treated to a short presentation by Dave Woodbyrne (Head Greenkeeper) and a tour of the course focusing on the work that the greens team have completed to target some drainage issues.

# BARONESS Turfcare Equipment

Quality on Demand



BIGGA  
TURF  
MANAGEMENT  
EXHIBITION



To see the very latest high quality golf course mowing equipment visit BaroNESS on Stand B78, Hall B  
BTME 2015, 20 - 22 January 2015  
BaroNESS mowers - Quality on Demand!



[www.baronessuk.com](http://www.baronessuk.com)

Tel: 01256 461591





# Membership News

The latest news from BIGGA

## DONATIONS ROLL IN FOR THE BIGGA BENEVOLENT FUND

A huge thank you to the Sussex section who raised £750 for the BIGGA Greenkeepers Benevolent Fund – which we will again be raising money for at BTME.

The section's final event of 2014 was held at Worthing Golf Club with an excellent turnout of 83, and the proceeds from the day's raffle added to other raffles throughout the year allowed them to make the generous donation. The cheque was presented to BIGGA CEO Jim Croxton by South East Regional Administrator Clive Osgood.

Sussex are just one of the sections who have raised an impressive amount of cash for the Fund in 2014.

Sussex Section secretary Pete Smith said: "The money raised for this extremely worthy cause is a tremendous effort from all of the guys that have attended events this year.

"Their support has been fantastic in 2014 and they've dug deep into their pockets every time we've come round rattling tins!

"We have been building the section back up and now have over 30 people attending every event."

Pete added that any help within the Section is always welcome and urged anyone interested in social, educational or golf events to contact him.

He said: "We have a four-man committee and we're keen to hear fresh ideas and for people to have



a say on what happens in the Section, this will benefit everybody. Our door is always open."

Anyone wanting to help the Section please contact Pete on 07748 776761 or pds1@btinternet.com

Many sections have already raised funds in 2014 which shows excellent support from the BIGGA Membership. Also thanks to the many individual contributors who have also donated through their membership renewals.



### Contact Details

**Tracey Maddison**  
General Manager  
traceymaddison@bigga.co.uk

**Elaine Jones**  
Membership Executive  
elaine@bigga.co.uk

**Rachael Duffy**  
Events & Membership Executive  
rachael@bigga.co.uk

Tel: 01347 833800  
(option 1 for Membership)



You can follow BIGGA on Twitter @BIGGALtd

### BIGGA Regional Offices

**Scotland & N. Ireland**  
John Young  
07776 242120  
johnyoung@bigga.co.uk

**Northern**  
Sandra Raper  
07866 366966  
sandra@bigga.co.uk  
@sandra4bigganor

**Midland**  
Roger Butler  
07525 593 359  
roger@bigga.co.uk

**South East**  
Clive Osgood  
01737 819343  
07841 948410  
cliveosgood@yahoo.co.uk  
@cliveosgood

**South West & South Wales**  
Tracey Harvey  
07841 948110  
tracey.harvey@bigga.co.uk

### OTHER USEFUL NUMBERS

(Full Members only)

**Personal Accident Helpline**  
0207 2048952

**Greenkeepers Legal Assistance**  
0800 177 7891

**Lifestyle Counselling Helpline**  
0844 770 1036  
www.arclegal.co.uk/carefirst



Find us at BTME  
Stand M9



## KING OF THE CASTLE

Nestled on a seaside perch in the Scottish Highlands, Castle Stuart Golf Links is a truly extraordinary golf destination. Home of the 2011, 2012 and 2013 Scottish Open, the course debuted at No. 56 on Golf Magazine's Top 100 Courses in the World list.

It's no surprise that Castle Stuart uses the Jacobsen ECLIPSE 322 on their greens. Because when you're Scottish golf royalty, only the best turf equipment will do.

For more information about Jacobsen products, visit [www.jacobsen.com](http://www.jacobsen.com).



FOR A LEGENDARY PERFORMANCE  
ON YOUR COURSE, CALL 01473 270000

[www.ransomesjacobsen.com](http://www.ransomesjacobsen.com)

GI/CS1/01/2015

### GREENKEEPERS' BENEVOLENT FUND

We will again be collecting donations to the BIGGA Greenkeepers Benevolent Fund at BTME – show your support to this extremely worthy cause by purchasing a green wristband.

For a minimum donation of £2, you can contribute by buying a wristband from the BIGGA Stand B23, in the Queen's Suite during Continue to Learn and there will also be collection tins placed around the Halls inviting donations.

BIGGA has identified the need for such a Fund to assist current or past members and their dependents who have suffered hardship – financial or otherwise – so please donate if you can.

### NEW BIGGA DATABASE

Please note that we are hoping for our new database to go live in the new year, so please bear with us regarding any delay in the processing of membership renewals and application forms. Thank you.





# L&D News

The latest from the Learning and Development department at BIGGA

**Learning & Development News has the latest updates on CPD and everything related to greenkeeper education**

**and training, supported by our BIGGA Partners, BIGGA Education Supporters and Individual Contributors –**

**funding your future. Contact the Learning & Development team at BIGGA House for more information.**

## LEE SAYERS IS LATEST BIGGA MASTER GREENKEEPER

Congratulations to Lee Sayers, Course Manager at Mid Kent Golf Club, who is BIGGA's 65th Master Greenkeeper.

It caps a wonderful few weeks for Lee as he's also been selected to join the latest BIGGA Delegation sponsored by Bernhard Grinders so will be heading to the Golf Industry Show in Texas.

Lee began studying for the Master Greenkeeper Certificate in March 2013 and passed his case study earlier this year, but unfortunately failed his technical exam. He recently retook this and has now been awarded the title 'MG'.

He said: "I'm really pleased because I worked very hard to get through the process. I'm 45 and I've got three kids so it was a case of locking myself away for a couple of hours every night whilst I got stuck into the books.

"It's nearly 20 years since I sat down and took an exam so it was a tough challenge, but I'm delighted all the hard work has paid off. I did it for my own benefit, I wanted to do something to improve myself, and I feel I've proved that age is no barrier. It's been hugely rewarding, and I'm a better greenkeeper for doing it."

Lee added that his fellow green staff, members and board of directors at the club are hugely proud of his achievement and backed him all the way.

"Several MGs I spoke to during the process were all very encouraging, especially Dan McGrath MG who really set me on my way when I was considering the undertaking.

"The team at BIGGA House were always on hand to answer any questions and assist with the inspection and exam details which



I took locally thanks to Hadlow College. I would also like to thank my family and friends for all their support."

Lee left school at 16 and had brief careers in banking and advertising before emigrating to Australia with his wife aged 21.

He took a greenkeeping role at a course called Rangeview and said he realised "within a couple

of weeks" that greenkeeping was what he wanted to do. He moved on to another Australian course - Cottesloe - before returning to the UK and joining Royal Blackheath. He then spent four years at The London Golf Club before securing his first Head Greenkeeper role at Hemsted Forest Golf Club.

He then returned to The London Club before joining Mid Kent as Course Manager in 2003.



**Individual Contributors:** Steven Tierney MG, Chris Lomas MG, Andrew Campbell MG CGCS, W J Rogers, Sam Langrick, Espen Bergmann, Nick Gray, Steve Dixon, Richard McGlynn, Douglas Duguid, Jaey Goodchild, Michael Beaton, David Barker, Greg Evans, Frank Newbery

### Contact Details

**Sami Strutt**  
Head of Member Development  
07818 405606  
sami@bigga.co.uk

**Stuart Green**  
Head of Member Learning  
stuart@bigga.co.uk  
@Stuart\_BIGGA

**Deb Burnett**  
L&D Administrator  
deb@bigga.co.uk

01347 833800 (option 3)  
www.bigga.org.uk

www.advancedtt.com

## SOON TO BE REVEALED THE NEW KID ON THE BLOCK

The INFiNiSystem™ already gives more functionality than the competition in a pedestrian unit, and is the only one capable of battery power. The new 30" sets to continue that superiority.

See the real thing at BTME 2015 on The Grass Group stand, A35.

**10** SMART cassettes for ultimate turf management

**2** Power sources for maximum flexibility

**3** Machine widths, 22", 26" and 30" for more productivity



ADVANCED TURF TECHNOLOGY

☆ aerate ✪ brush ✪ de-thatch ✪ groom ⊙ level ✪ mow ✪ scarify ✪ top dress



George Pitts  
Master Greenkeeper

# MASTER GREENKEEPER

## CERTIFICATE

The Master Greenkeeper Certificate is awarded to those greenkeeper members of BIGGA who have reached the highest standards of greenkeeping and golf course management.

- It is a prestigious industry award gained by
- Experience as a greenkeeper
  - Through formal and informal training
  - Golf course management assessment
  - A rigorous, two-part examination

All Full, Associate and International members of BIGGA are eligible to join and earn Stage 1 Credits. Applicants must be Course Managers (Superintendents)/Head Greenkeepers to progress to Stages 2 and 3.

Do you have what it takes? Download an application form at [www.bigga.org.uk](http://www.bigga.org.uk) by clicking on Education.







## FTMI DEADLINE NEARS

Don't forget that you only have until 30 January to apply for the Future Turf Managers Initiative 2015, made possible by Jacobsen.

To put yourself forward for this fantastic educational opportunity visit [www.surveymonkey.com/s/FTMI15-Applciant](http://www.surveymonkey.com/s/FTMI15-Applciant).

The application will take around 15-20 minutes to complete.

FTMI 2015 will take place on 24-26 March 2015 at Ransomes Jacobsen's Ipswich HQ, and subjects include:

Communications, budgeting, leadership, team management, CV Writing and interview techniques and volunteering.

A nominator will be required to validate all applications, and a panel from BIGGA and Jacobsen will select the successful delegates.

Only BIGGA members can apply, and applications will only be taken via the link above. If you require any further information, please email [sami@bigga.co.uk](mailto:sami@bigga.co.uk)



## CPD NEARS 1000

We're delighted to announce that we are approaching 1,000 members using CPD.

At the time of going to press, 944 members were engaged with our revamped CPD programme and we also have 165 CPD Approved members.

Stuart Green, BIGGA's Head of Member Learning, said: "These figures show a massive increase in the take up of the new CPD programme."

"This reflects how much more accessible CPD is and also how members are realising CPD is a very valuable tool in their career development."

"We're now hoping to break the 1,000 barrier very soon which would be a real milestone for the programme."

For more on CPD, and if you have any questions, please contact the L&D Team or email [cpd@bigga.co.uk](mailto:cpd@bigga.co.uk)



## BARONESS LEVEL 3 SCHOLARSHIPS REMINDER

The latest Baroness Level 3 Scholarship has been awarded to a groundsman – Craig Carolan from Warwick University.

The kind support from Baroness means that you can get financial support to study a Level 3 Diploma in Work-based Horticulture (Sports Turf - Greenkeeper) or an SVQ Level 3 Sports Turf Management.

BIGGA member Craig said: "Because of my role as a Deputy Head Groundsman I feel the Level 3 will provide me with more knowledge in my current position and also with my career progression."

For more details on Baroness Scholarships, and all of our Funding Opportunities, visit the BIGGA website, click on the 'Education' tab and scroll down to 'Funding Opportunities' on the left hand side.

Application forms can be found in the member's area of the website.



## SCHOLARSHIPS

Congratulations to Robert McDowell of Wishaw Golf Club who has become the latest recipient of a Higher Education Scholarship supported by Jacobsen. Robert will be studying a HND in Golf Course Management with Elmwood College through distance learning.



Long-lasting Medallion TL gives you the confidence and peace of mind that your turf is safely protected.

The fludioxonil in Medallion TL is the ONLY Contact+ active – targeting disease on the leaf AND in the thatch.



*Disease Control Inside Out*

Look into the future of Turf Science with Syngenta at BTME 2015 – Stand B52

# Medallion TL

## Bio-inspired explosive performance



Visit [www.greencast.co.uk](http://www.greencast.co.uk) for more information

 **Medallion<sup>®</sup> TL**

 **syngenta.**





## THE SHOW OF THE YEAR

**Over one hundred exhibitors are once again preparing to descend on Harrogate for the turf exhibition which kickstarts each new year in the industry.**

The Harrogate International Centre is again the location for BTME 2015, which runs from 20-22 January 2015.

Dozens of familiar names from every corner of the industry are joining new exhibitors in a literal A-Z of turf management.

Where else can you visit exhibitors who cover aeration, club management, drainage, education, fencing, grinders, health and safety, irrigation, landscaping, mowers, pest control, renewable energies, spraying, tractors and waste management, to give you just a small flavour of what to expect?

For updates on BTME 2015 follow us on Twitter @BIGGALtd, and use the hashtag #BTME2015

For up to date news from the exhibitors, including new products, new innovations and competitions which will all be featuring at BTME 2015, visit [www.btme.org.uk](http://www.btme.org.uk), click on the tab on the 'Media' tab on the left, then click on 'Press Releases'.

The website is also an excellent port of call for anything else you'd like to know about the exhibition from Media to Travel and Accommodation and Useful Contacts...and much

more, including more on our unrivalled Continue to Learn Education Programme.

It also contains a full list of exhibitors alongside their Stand numbers – and simply flick over to the next double page spread for the full Hall plans.

The opening times for BTME 2015 are 9am-5pm on Tuesday 20 January and Wednesday 21 January, and 9am-4pm on Thursday 22 January.

Don't forget there is still time to pre-register for the exhibition and avoid the queues.

Simply visit [www.btme.org.uk](http://www.btme.org.uk) and click on the 'register now' icon on the right hand side.

We look forward to seeing you for what is sure to be another memorable week in Harrogate.

**BIGGA TURF MANAGEMENT EXHIBITION**



20-22 JANUARY 2015



18-21 JANUARY 2015

### Eat out

Some fine eateries in Harrogate – booking is recommended

B.E.D.

Modern English  
Tel: 01423 568600  
[bed.ltd.uk](http://bed.ltd.uk)

Bistro Pierre

French  
Tel: 01423 533070  
[lebistrotpierre.co.uk/locations/harrogate](http://lebistrotpierre.co.uk/locations/harrogate)

Cattlemens

Tex Mex  
Tel: 01423 561456  
[cattlemens.co.uk](http://cattlemens.co.uk)

Chez la Vie

French  
Tel: 01423 568018  
[chezlavie.com](http://chezlavie.com)

Drum & Monkey

Seafood  
Tel: 01423 502650  
[drumandmonkey.co.uk](http://drumandmonkey.co.uk)

Harrogate Brasserie

English  
Tel: 01423 505041  
[harrogatebrasserie.co.uk](http://harrogatebrasserie.co.uk)

Lucia's

Italian  
Tel: 01423 500071  
[luciawinebar.co.uk/harrogate](http://luciawinebar.co.uk/harrogate)

William and Victoria

English  
Tel: 01423 521510  
[williamandvictoria.com](http://williamandvictoria.com)



### Welcome Celebration

We're delighted to announce that this year's Welcome Celebration keynote speaker is BBC sports broadcaster Andrew Cotter.

Andrew has commented on many prominent golf events for the BBC since 2000 including The Ryder Cup, The Open, The Masters and The Women's Open.

He has also kept viewers and listeners entertained and informed during the Olympics, the Paralympics, tennis and rugby.

He's sure to be an enlightening and entertaining speaker to round off an evening celebrating the best of the greenkeeping industry.

Entry to the Welcome Celebration is FREE, and it will take place in the Royal Hall of the Harrogate International Centre on Tuesday 20 January at 5.30pm.

### DOWNLOAD THE BTME APP



Don't forget to download the BTME 2015 app which is available to download for iPhone, iPad and Android devices! This is the quick and simple way to keep up to date with Europe's premier turf exhibition on your smartphone.

Features include: Event info / Exhibitor information / Speaker details / Hall plans / Full agenda of the week / Sponsors details

You can also create your own Calendar which will ensure you don't miss anything during what is sure to be another packed week. The Harrogate International Centre boasts free wi-fi access which will enable delegates to access the internet throughout the week.



### How to find the Harrogate International Centre

Harrogate is located centrally on the UK map with ready access to London and Edinburgh.

A first-class motorway network, mainline rail, sea and 24-hour air links ensure that Harrogate is able to offer all the benefits expected of a truly global location.

Harrogate has excellent rail and air links with regular train services to and from London King's Cross via York and Leeds ([www.nationalrail.co.uk](http://www.nationalrail.co.uk)) and Leeds Bradford International Airport is only 20 minutes from Harrogate with a regular bus service into Harrogate.

For details about travelling to Harrogate by public transport visit [www.transportdirect.info](http://www.transportdirect.info)

By Car From London:

M1 - A1(M) - J47 signposted Knaresborough and then follow the Harrogate signs.

From the North: A1 - J47 signposted Knaresborough and then follow the Harrogate signs.

From the East: M621 - A1(M) - J47 signposted Knaresborough and then follow the Harrogate signs.

From the West: M56 - M62 - A1(M) - J47 signposted Knaresborough and then follow the Harrogate signs.



Please note we are not running a park and ride or hopper service this year. Dragon Road Car Park will be available from Tuesday to Thursday with limited free parking for exhibitors and visitors on a first come first served basis





- |                                     |                               |  |   |                                     |                                  |                                 |                                    |
|-------------------------------------|-------------------------------|--|---|-------------------------------------|----------------------------------|---------------------------------|------------------------------------|
| A1 Agronomic Services               | A28 Amenity Sales             | A59 Soil Harmony                             | B19 Britrisk Safety Ltd                                   | B48 Charterhouse Turf Machinery Ltd | C12 Turfkeeper.com               | C48 Complete Weed Control       | M9 Ransomes Jacobsen               |
| A2 Vitax                            | A29 Aquarille                 | A60 Countrywide                              | B23 British & International Golf Greenkeepers Association | B50 Eagle                           | C14 JUB Holland                  | C49 Verde Sports Ltd            | M10 Better Billy Bunker            |
| A5 DENNIS & SISIS                   | A30 Cleveland Sitesafe Ltd    | A61 Gambetti UK                              | B29 Greenkeepers Training Committee (The)                 | B52 Syngenta                        | C15 Highspeed Group Ltd          | C50 Profusion Environmental Ltd | M11 Barcham Trees Plc              |
| A6 MTS Golf & Utility Vehicles      | A31 Ultra Soil Solutions Ltd  | A63 Green-Tech Ltd                           | B30 Delta-T Devices                                       | B54 Everris Limited                 | C21 BMS                          | C51 Aqua-Terra Europe           | M12 Durabunker Ltd                 |
| A9 Rain Bird Europe SNC             | A32 Hurrells Seeds            | B1 Grillo Agrigarden Ltd                     | B31 HDK Electric Vehicles                                 | B56 Lloyds / Hunters                | C22 GCOA & GRN-OGRO              | C52 Sibelco                     | M14 GCSAA                          |
| A10 Ecosolve Ltd                    | A34 Tarmac Topsport           | B2 Perrot                                    | B32 Tines Direct  | B58 Campey Turf Care Systems        | C23 Barenbrug UK Ltd             | C53 KUHN Amenity Pro            | M15 Golf Club Managers Association |
| A11 Nomix Enviro                    | A35 The Grass Group           | B5 Maxstim                                   | B33 Trimax Mowing Systems                                 | B59 Trimax Mowing Systems           | C27 Hunter Industries            | C54 Bailoy Irrigation Controls  | M16 Toro - Lely (UK) Limited       |
| A12 Custom Agronomics               | A45 Germinal Seeds GB         | B7 Symbio                                    | B34 Sherriff Amenity                                      | B78 Baroness Mowers                 | C28 Talbot Farm                  | C55 Lastec UK                   | M17 Sports Metals Ltd              |
| A16 Blec Global Ltd                 | A46 Bayer                     | B9 Lindum Turf                               | B36 STRI  | C1 Huxley Golf                      | C30 Headland Amenity Ltd         | C56 Double A / Tru-Turf         | M18 True-Bot.com                   |
| A17 GREENACRES Artificial Grass     | A49 M.J. Abbott Ltd           | B10 Humber Palmers Fertilisers               | B37 Ground2Control Solutions                              | C2 Souters Sports Ltd               | C34 Netafim UK                   | C58 Wiedenmann UK Ltd           | M19 Sports Maintenance             |
| A18 Farmura Ltd                     | A51 Tillers Turf              | B11 Sheltons Sportsturf Drainage Solutions   | B38 Engo Group  | C4 Border Sports Services Ltd       | C35 GBR Technology Limited       | C61 Wessex International        | M20 John Deere                     |
| A19 Aquatrols                       | A52 Spectrum Technologies     | B12 Merrist Wood College                     | B39 Bradshaw Golf Buggies                                 | C5 Ecobunker Ltd                    | C37 Askham Bryan College         | C62 Rigby Taylor Ltd            | M28 GGM Groundscare                |
| A20 Johnsons Sports Seed            | A54 EnviroMonitors            | B13 Myerscough College                       | B42 Garfitts International Ltd                            | C6 Yamaha Motor (UK) Ltd            | C38 TurfCare                     | M4 Bywater                      | M29 Gianni Ferrari s.r.l.          |
| A22 European Turfgrass Laboratories | A55 Aitkens Sportsturf Ltd    | B17 Compo Expert UK Ltd                      | B43 Indigrow Ltd  | C8 County Sport Surfaces            | C39 Limagrain UK                 | M5 Turfdry                      |                                    |
| A23 CRL - Clive Richardson Ltd      | A56 Groundsman Industries Ltd | B18 Scotland's Rural College, Elmwood Campus | B44 Bernhard & Co Ltd                                     | C10 Green-Tech Ltd                  | C41 True Surface by Turflite     | M6 Perennial                    |                                    |
| A27 Maxicrop UK                     | A57 Inturf                    |  | B46 Waste2Water Europe Ltd                                | C11 KAR UK Limited                  | C42 Global Turf Equipment UK Ltd | M7 Institute of Groundsmanship  |                                    |
|                                     | A58 Greentech Sportsturf Ltd  |  |   |                                     | C47 XL Horticulture Ltd          | M8 Belchim Crop Protection Ltd  |                                    |



## NEW FROM JACOBSEN

Following a review of their marketing strategy, Jacobsen have taken the decision to return to BTME on an annual basis. Their policy will be to alternate between small and large stands, so for 2015 they will have a limited presence, but will return in 2016 with a more significant stand.

The focus on Stand M9 will be the Jacobsen MP493 wide area rough mower, one of the first two machines in a series of new mowers, manufactured at their European headquarters in Ipswich. The MP range, powered by 49hp and 65hp Kubota diesel engines, will eventually provide multiple mowing options from a single design platform.

The Jacobsen MP493 batwing mower features three, all new rotary decks, manufactured from high strength, lightweight steel with a 150 mm break-back system on the wing decks help prevent damage.

Also on display will be the Jacobsen Eclipse2 petrol-electric hybrid walking greens mower with frequency of cut technology that provides unrivalled consistent mowing across all greens.



BTME

Stand M9

BTME

Stand A45

## NEW BENTGRASS BLEND FROM GERMINAL

Germinal will announce at BTME that its new Browntop bentgrass blend, AberMajesty – which offers greenkeepers improved disease resistance and year round visually stunning greens – is now available in the UK.

AberMajesty is a blend of two home-bred Browntop bentgrasses, 60% AberRoyal and 40% AberRegal, and is the latest addition to Germinal's Grade 'A' range of golf-specific seed mixtures.

AberRegal is Germinal's newest bentgrass cultivar, and follows hot on the heels of AberRoyal, the UK's first home-bred Browntop. The commercial release of AberRegal has been eagerly anticipated in the UK as it offers greenkeepers a greater choice of UK-bred cultivars, and promises improved shoot density, fineness of leaf and unrivalled winter and summer greenness.

Bred at IBERS (the Institute of Biological, Environmental and Rural Sciences in Aberystwyth) as part of the institution's UK-based amenity seed breeding programme, AberRegal was bred from material originally collected from Kent. As such, it perfectly complements AberRoyal which was originally sourced from West Wales.

"AberRegal and AberRoyal work well together by offering a blend of bentgrasses which will thrive on soil and sand based greens anywhere in the UK," explained Richard Brown, Amenity Sales Manager for Germinal. "It provides greenkeepers with improved genetic diversity and a sward with higher overall disease resistance against key threats such as Red Thread and Fusarium."

"AberMajesty is also the perfect solution for year-round golf courses where visually stunning greens are demanded by players, even during the depths of winter when the ability to fertilise for enhanced greenness is not possible. By combining AberRoyal's winter and summer greenness scores of 6.8 and 6.6 with AberRegal at 6.9 and 6.9, greenkeepers can be confident their greens will remain as verdant as possible throughout the entire year."

AberRegal was bred by Sheena Duller, Research Scientist and Plant Breeder at IBERS, who explains that the original plant



material was collected from Marden Meadow in Kent in 1995. "Since then, a long series of selections have been made to enhance the cultivar's turf performance," she says. "It has been extensively tested at the Sports Turf Research Institute (STRI) and has subsequently achieved National List registration. AberRegal was selected for its characteristic density of turf, disease resistance and longevity to produce a high quality, 100% British variety."

Long-time AberRoyal user, Simon White, Course Manager at The Chase Golf Club in Staffordshire, has already used AberMajesty and has been pleased with the new mixture's

initial performance. "We started using AberRoyal at The Chase five years ago to improve the quality of our greens," he explains. "It's been a consistent performer for us but we are always on the lookout for new cultivars to avoid creating a mono-culture of grasses. We were therefore eager to add AberRegal to our own list of cultivars."

"We over-seeded a number of greens with AberMajesty at the end of last summer and have been suitably impressed by how it has performed. It germinated extremely reliably and has established itself fantastically well, adding a greater depth of greenness and consistency to our greens."

AberRoyal, AberRegal and AberMajesty are available exclusively via Germinal. The recommended sowing rate is 8 to 12g/m<sup>2</sup> (80 to 120kgs/ha). The recommended overseeding rate is 5 to 8g/m<sup>2</sup> (50 to 80kgs/ha).

**BTME competition:** to celebrate the launch of AberMajesty, Germinal is holding a spot-the-ball competition at BTME, with a first prize for one lucky winner and a guest to attend the 2015 Open Championship at St Andrews on 19 July 2015. The full prize includes two tickets to watch this final day's play, plus a complete hospitality package for the day including a complimentary bar and food. For a chance to win, visit Germinal on Stand A45.





**BTME**  
Stand  
C2

## WIDE VARIETY FROM SOUTERS SPORTS

Souters Sports, one of the UK's leading specialist sportsturf contractors, will be exhibiting at BTME 2015 on Stand C2.

Renowned for providing sports ground construction, land drainage and sports pitch renovation services of the highest quality. The company caters for clients of all sizes, however large or small.

Serving a wide range of sports turf services, Souters Sports have spent a number of years

assembling a first-class team consisting of proven, talented professionals trained in all aspects of golf course construction.

Combined with a significant and ongoing investment in market leading equipment, it is easy to see why more and more course managers are now turning to Souters Sports.

The team has proven its experience and expertise at a variety of golf clubs including The

Dukes in St Andrews, Cruden Bay, Gleneagles, De Vere Carden Park and Fairfield Golf Club amongst others. In addition, the team has two shapers with over 30 years' experience, who have an esteemed reputation of shaping architects and committees' visions alike.

A number of the company's experienced staff will be on hand at BTME to advise industry professionals on any construction, drainage or irrigation-related issues.

## NEW CHAPTER FOR CHARTERHOUSE

A new chapter in the history of Charterhouse Turf Machinery will unveil itself at BTME 2015 on Stand B48 when 'Green' joins 'Red'. For the first time at BTME, Graden machines will complement the Redexim equipment for the care and maintenance of natural turf surfaces.

The Graden range of verticutters are renowned for their depth of cut as well as their ingenuity with products like the Contour Sand Injector (CSI) – a scarifier/aerator with the ability to scarify to any depth between 1mm-40mm, whilst simultaneously backfilling the grooves with either sand or a combination of sand and seed.

From the Redexim stable comes innovative machinery like the Verti-Quake 2516 - a linear aerator which decompacts the soil via 18 rotating off-set blades.

Charterhouse will also be displaying the DS800 topdresser from their highly successful Rink range. This twin-disc topdresser spreads material up to 15m wide and can successfully operate light, heavy or wet applications. The DS800 has a hopper capacity of 0.8m<sup>3</sup>, a working speed of 19mph and the benefit that the spreading pattern and density - determined by the tractor spinner and conveyor belt speed - can all be controlled easily from the tractor seat.



**BTME**  
Stand  
B48

## NEW LINE-UP FOR VITAX



Supaturf's new line-up of marking machines which will be on display on Stand A2 features the TXE 606 and 353, delivering enhanced performance and even easier operation. Also joining the team is the new generation Briteliner Arrow, transfer wheel technology for today's turfcare demands on natural or synthetic turf.

Keeping many of Britain's golf courses in the green is Vitax Enhance, an innovative range of bioactive fertilisers that includes microgranular and liquid products tailored to fine turf areas like golf greens and fairways that now embraces a water-soluble option.

The winner of The Big Draw, to be announced in the run-up to BTME, is due to be presented with a superb set of Supaturf's just-launched stencils, designed for marking out pitches, car parks and other public areas for events and sporting fixtures - plus the Supaturf aerosols to go with them.

Pick up the 'bible' of linemarking on the stand - the complete guide to marking out.



## CAMPEY CONTINUE TO LEARN SEMINAR

Campey Sales Director Simon Gumbrell will be delivering a seminar during Continue to Learn at BTME 2015 on the changing techniques for fine turf maintenance across Europe.

The seminar, free for BIGGA members who have pre-booked (go to [www.btme.org.uk](http://www.btme.org.uk) for more) entitled From Real Madrid to Your Golf Course will be held on Tuesday 20 January at 2.15pm.

It will look at how new methods of turf management have rapidly developed in European football stadiums and training

centres, and how world renowned clubs such as Real Madrid have perfected environmentally friendly and efficient techniques to remove unwanted thatch and rogue grasses.

Simon will be discussing how you can adapt these methods to make real changes to your golf course in order to promote your preferred grass species.

Campey Turf Care Systems will be exhibiting many of the machines used to achieve the results as described by Simon on their Stand - B58. The Koro Field TopMaker with Universe®

rotors will feature heavily, as will the Air2G2 which has had a fantastic response from users in its first year in the UK.

The new VGR Topchanger offers an alternative approach using the power of water to de-compact the soil and create an excellent, healthy environment for grass roots to thrive.

Other products on display will cover all aspects of natural turf maintenance including the Dakota 410 in special edition livery, Vredo Super Compact seeder, Imants SandCat and the Imants ShockWave 155.



**BTME**  
Stand  
B58





Leading UK turf care and sports equipment suppliers Sherriff Amenity will once again be holding the BASIS Foundation Award in Amenity and Horticulture at BTME 2015. The company will also be showcasing a new online Turf Report and Education Platform on Stand B34.

The BASIS Foundation Award in Amenity and Horticulture has been a resounding success at the exhibition over recent years with an impressive pass rate. This is set to continue at BTME 2015, with Sherriff Amenity committed to raising the knowledge of pesticides among professional users.

A three-day course is conducted by the STRI's Head of Research Dr Ruth Mann, which serves as preparation for the final exam to be held in Harrogate during the exhibition. With support from Bayer and Everris, the award is undertaken by a wide variety of professionals including candidates from golf clubs and other landscape and amenity organisations.

Commenting on the importance of education at an industry trade show like BTME, Sherriff Amenity's Marketing Manager Kevin Whitby said: "We see this as a practical way of promoting a professional understanding of

pesticides. It is important to support education within the industry as well as also helping to support education at the show."

As well as playing a vital role in the education programme, Sherriff Amenity's experienced staff will be out in force on stand B34, providing invaluable advice to greenkeepers, course managers and turf professionals. With an extensive range of fertilisers, chemicals, grass seed, dressings, sprayers and golf course equipment, Sherriff Amenity has the perfect solution to achieve tees, greens and fairways of the highest standard.



## NEW FROM TILLERS TURF

New, for the first time ever at BTME, on Stand A51, is Tillers' Poa Greens turf. Poa Greens turf is grown on USGA sand to ensure compatibility with the rootzone. But, unlike a pure fescue/bent turf, Poa Greens is more compatible with older greens with a Poa/bent sward composition. This means that both the look and the speed of the new green will be similar to the other greens on the course.

Other highlights on the stand include the 'often copied but never equalled' revetting turf, and our wildflower turf. Now in its fifth year of production, revetting turf is seeing increasing demand from links courses throughout Europe. The perennial wildflower turf is being specified as a means of successfully introducing biodiversity on the golf course. On hand will be the avuncular Adam Pounds to answer any questions and to provide quotations.

Joining Adam will be Richard Owens, formerly Course Manager at Boston West GC, who joined Tillers Turf in 2014 having won Conservation Greenkeeper of the Year Award. Richard, a keen environmentalist, will explain why Tillers Turf is a sponsor of the STRI Golf Environment Awards, and will show visitors how to maximise nature on the golf course.



World-class freestyle footballer Jamie MacDonald will be showcasing his skills on Bayer's Stand (A46) at BTME. With a history of innovative stand attractions, Jamie's appearance is sure to wow visitors at the event.

BTME is one of Bayer's most important events in terms of engaging greenkeepers in the industry.

The creation of a stand which is interactive, fun and informative will ensure that Bayer are able to reach out to their customers.

"Talking to greenkeepers and course managers and giving them advice on turf management is what we do, so their feedback is crucial. This is why we put a lot of thought into creating an innovative and interesting stand at BTME," explained Steve Bishop, Product Manager for Bayer's professional turf and amenity portfolio.

The focus this year is very much about the two key products Interface and Merit Turf for use on the professional upkeep of golf courses across the UK, both of which are growing in popularity.

"Interface, which is very popular with greenkeepers and course managers, is an innovative turf fungicide due to the way it's formulated. The unique StressGard Formulation Technology from Bayer delivers excellent disease control and grass protection, leading to visibly healthier grass," Steve added.

Steve said that their popular granular insecticide, Merit Turf is also a key product for course managers. "Used for the control of chaffer grubs and leatherjackets, Merit Turf is the only dual control product for use against both of these pests, in this sector, and is extremely effective."

Steve explained that Bayer's customer portfolio is growing.

"More greenkeepers are choosing Bayer products to compliment their turf management programmes, to ensure their courses are in optimum condition for each and every use."

The appearance of Jamie on the stand also highlights the link with other sectors of turf management.

"There are a lot of similarities between the golf sector and turf management in other sectors such as football, so this is an opportunity to disseminate this message, as well as it being a fun attraction on stand.

"Ultimately, we want a stand which is engaging, and draws visitors in, so we can talk to the people who matter - our customers - and this is of utmost importance to us."



**complete ice control**  
From Complete Weed Control

When giving into the weather is not an option

**COMPLETE WEED CONTROL IN THE DRIVING SEAT**

BTME Stand C48

Complete Weed Control (CWC), the UK's largest weed control contractor, will be at BTME 2015. Visitors to the Harrogate exhibition will be able to find out more about the specialist services on offer by visiting Stand C48.

The company will once again be holding 'The Stig Driving Challenge' at BTME where visitors will be invited to set a 'hot lap' on the Top Gear track. The CWC Stig will set the best time each morning with prizes being offered for the fastest time set from each day.

The company, which has over 50 offices throughout the UK and Ireland and also operates its exceptional franchise scheme, began its war on weeds in 1972. In the years that followed, Complete Weed Control went from strength to strength and demonstrated its commitment to spearheading the marketplace by investing heavily in research and development.

Complete Weed Control's technical expertise has been recognised throughout the UK and has resulted in many golf clubs turning to the company to keep their courses in pristine condition. With an extensive range of services available including moss control, weed control, disease management and cosmetic spraying, it's no wonder that some of the UK's most prestigious clubs have chosen Complete Weed Control.

The technology of weed control and spraying applications is quite sophisticated these days and knowing when and how to apply the appropriate product is absolutely vital as it can speed up eradication and save time and money.

All of Complete Weed Control's work is undertaken by a rigorously trained and experienced team who adhere to strict health &

safety guidelines. It is this professionalism which ensures that course greens, tees and fairways look their best at all times.

A number of Complete Weed Control's experienced staff members will be on hand at BTME to offer valuable advice to all attendees. Although we are into the dark mornings and evenings, pests and diseases don't stop for a holiday- in fact, they become more active;

so why not visit Stand C48 to receive some fantastic tips on tackling winter conditions?

With winter in mind, more information will be available on Complete Ice Control; which was formed in response to the overwhelming need for a professional, reliable and trusted local gritting service to deal with snow and ice worries using the best tools and technology available.

## BTME DEBUT FOR GIANNI FERRARI

Gianni Ferrari will be exhibiting the new Turbo Z 322 Diesel at BTME for the first time on Stand M29.

The new Turbo Z 322 D has many additional benefits to its petrol equivalent, such as reduced running costs associated with diesel engines. Although fitted with a powerful diesel engine, it still retains the same compact design. It boasts hydraulic lift for attachments enabling the machine to mount kerbs and pavements with ease.

It is also compatible with the new 132 cm Dual-Cut™ deck which allows the operator to switch between mulching mode and rear discharge mode in one simple move.

BTME Stand M29

# Inject some life!

The Graden CSI is very versatile.

Firstly it is the ultimate machine to penetrate through the upper surface to remove thatch and increase drainage.

Secondly it has the ability to inject sand at the same time – and then combine it with seed to make a hat-trick!

Find out more about the [Graden CSI](#) today.

See us at BTME 2015 - Stand B48

Designed for durability  
**Charterhouse**  
TURF MACHINERY

[www.charterhouse-tm.co.uk](http://www.charterhouse-tm.co.uk) | 01428 661222



TriCure AD

## More results less application

See us at BTME 2015 on stand C30

A multi-rate surfactant effective on sand, soil and organic matter

01223 597834  
info@headlandamenity.com  
www.headlandamenity.com

headland AMENITY PRODUCTS

THE MISSING PIECE THAT MAKES ALL THE DIFFERENCE!

Avoid the queues and pre-register for BTME 2015 at

[www.btme.org.uk](http://www.btme.org.uk)

For more news and updates follow BIGGA on Twitter @BIGGALtd

**BIGGA**  
TURF  
MANAGEMENT  
EXHIBITION





# Do you encourage the intimacy factor?

Eddie Bullock, Turf Managers' Conference presenter 2015, is an expert in golf facility management. This month he focuses on welcoming golfers to your club and how the whole team can play a part in ensuring customer satisfaction to prevent golfers heading elsewhere

**Talent spotting is one of my pastimes. When visiting golf clubs, I am looking for that sparkle that immediately engages me. When I find examples of it, I have a tendency to examine each and every one of this new breed of talent, just to find out how much product knowledge they have about their organisation.**

How old is the club? How many members are there? How long have they been with the club? Do they take control - do they naturally transmit the 'warm welcome' factor and make me want to be with them? Do they take ownership and feel responsible for my stay at

their club; do they engage me and make me feel that, even as a guest, I belong?

Successful clubs ensure that a welcoming atmosphere is integrated into all activities of their business, so that focusing on their members and guests becomes part of the club's way of life.

Alas, this experience is all too infrequent. Instead, at some clubs, you can receive a lacklustre welcome from the front of house, but is it their fault? Are they really to blame?

Moreover, has anybody invested time to make them excited and energised about their workplace? If not, then it's no surprise that

apathy is what members and guests receive. It surprises me when I discover how many clubs don't deliver a thorough induction into their businesses. Clubs that do so recognise how critical such a process is.

And that doesn't mean a 'quick tour around the facilities, here's your uniform, now go to work' attitude.

Can you imagine Manchester United, Chelsea, Real Madrid or Bayern Munich signing a player, welcoming them, then directing them to the dressing room and suggesting they interact with other members of the team on the way to see how they do things without

sharing the vision and values of the organisation?!

Key messages create the internal drive to deliver the expectations to the customer, no matter what business you are involved with.

Knowledge is not only key, but also it is critical for each and every one of the club's employees. Yes, EVERYONE needs to know about the business to understand what the business represents. They need to be business partners and elevate their presence.

If the goal is efficiency, consistent message and common practice, it is vital to share. For example: the team wants to know how the club is marketed, how it generates

## about the author

Widely recognised as an authority on the emerging trends within the global golf industry, Eddie has spoken at many leading business and association conferences. His main area of focus is golf club hospitality and the effect this has on business operations. He is a mentor and consultant who has helped many golf businesses to flourish. He shows younger businesses how to thrive and larger businesses how to become leaner, fitter and more successful. Through a combination of his knowledge and intuitiveness, Eddie provides clear assessment, guidance and solutions. Find out more at [www.eddiebullockgolf.com](http://www.eddiebullockgolf.com)

There are many clubs that are exemplary in motivating their employees to focus on membership results.

There is no more valuable advertising than word of mouth advertising and with social media the field has obviously expanded. People believe what their family, friends and neighbours say about a business or facility, and they remember it for a long time. It is also true that very few people will complain - directly. They simply take their business elsewhere.

A business operation generates word of mouth advertising, whether the management is aware of it or not. Satisfied customers tell four to five people of their positive experience whereas dissatisfied customers tell 9 to 12. So the question is, what are customers saying after they have experienced your club's services?

The basis of all positive word of mouth advertising is providing excellent products and services. This is also the basis for success of most marketing and advertising. Loyal customers will notice the quality and sincerity of how welcoming and consistent their experience is.

The devil is most definitely in the detail and it is more often than not the tiny touches that end up counting the most.

Most golf facilities fulfill their customers' expectations but people will talk about you if you surpass their expectations. For example, I recently had an experience at a course where I was playing, and not unusually for me I was searching for a ball in the rough.

A greenkeeper on a rough mower drove up, and my first thought was to feel pressured that I was holding him up. But on this occasion he stopped the mower, got off and helped me find my ball, giving the impression he genuinely wanted me to enjoy my round - a fantastic example of a small detail making a difference.

It won't surprise you that I've told everyone this little tale! Do the little few extra things, and you will have loyal members and guests that recommend you to their friends, neighbours and family.

You want the underlying philosophy of your culture to be that any visit that does not provide "The Intimacy Factor" - the desire to tell it to someone - is a missed opportunity.

Every customer is not profitable or even desirable; some people have unrealistic expectations, and will not be happy no matter what. This is true in every business.





On the other hand, regular customers that become unhappy actually have the potential to be your best advocates. Statistics suggest that when customers complain, business owners and managers ought to get excited about it. The complaining customer represents a huge opportunity for more business, and there is often nothing a golfer wishes to complain about more than the course itself.

When you resolve problems to the satisfaction of these customers, they will become your loyal supporters, and will spread positive word of mouth advertising for you. It's human nature. We respect people that admit mistakes and correct the situation.

We give them the benefit of the doubt in the future, and we tell others that they fix their mistakes and keep their promises. It leads to great customer loyalty. If you really want to stand out, go in search of the unhappy golfer that never complained.

If you want people to say great things about you, find and fix the problems that he or she didn't identify. Ask for feedback from your golfers, and follow up. You will win advocates and friends; and they will actively influence other people with

their positive recommendations about your course.

Many golf clubs need to remove their barriers to service and hospitality, and focus their objectives on delivering customer results. This would enhance the whole experience by developing the right people for the club service environment. The prerequisite of progressive employees in any business is honesty from their employers, and the opportunity to learn new skills that will set them up for their future. The new generation is thirsty to edge ahead and develop their CV by adding new competencies they didn't previously have.

When a new employee is hired within an organisation, whatever its size, they should enter as if it's a university of learning. Their initiation must include: coaching them to have a service mindset and guiding them to exceed expectations where possible.

Asking them how can they constantly look for opportunities to provide more than people anticipate - going above and beyond the call of duty.

That initial approach should also include the five important tenets that are non negotiable, particularly for all direct customer contact:



IMAGES from The Turf Managers' Conference 2014

Five important tenets

- 1) Smile
- 2) Make Eye Contact
- 3) Use Names
- 4) Spend TIME to connect
- 5) Always say Thank You

This process is unlikely to be successful unless the organisation recognises the value of talent identification and development, and makes it part and parcel of every manager's responsibility.

Organisation leaders at all levels have to be constantly communicating the message, similar to my old schoolteacher Miss Carruthers, who had to constantly and forcefully repeat her message!

**EDDIE IS PRESENTING AT THE TURF MANAGERS' CONFERENCE 2015 ON MONDAY 19 JANUARY 2015 AT THE CROWN HOTEL, HARROGATE. TO BOOK YOUR SPOT VISIT WWW.BTME.ORG.UK**

**Unequaled.**  
JUST GOT UPGRADED

**2 YEAR WARRANTY AS STANDARD\***  
\* Conditions apply to 2nd year see dealer for details

**THE NEW, EVEN BETTER** STW COMPACT TRACTOR SERIES

Step up into new levels of comfort, reliability and performance with the new STW compact tractor series from Kubota.

From mowing to loading, the new STW is an unequalled performer. Amazingly quick and impressively powerful, it's lightweight and compact design delivers outstanding efficiency with minimal surface impact.

Heavy duty tasks are light work thanks to the STW's high torque, low noise Kubota diesel engine plus a host of standard features including the exclusive Bi-Speed turn for enhanced and effortless operation.

Now available with a panoramic, spacious and air-conditioned cab, the STW offers class leading visibility and operator comfort. **Why settle for less. Be unequalled.**



See it now at your Kubota dealer.

For more information or to find your local dealer call: 01844 268 000 or visit: [www.kubota.co.uk](http://www.kubota.co.uk)



# Join the BMW PGA Championship support team

Now is your chance to apply to join the volunteer BIGGA greenkeeping support team for the BMW PGA Championship at Wentworth in May

**BIGGA has provided a support team for this event for many years and volunteers are again required for all four days of this the flagship event of the European Tour.**

The 2015 tournament is between 21-24 May, and an early morning prep team of 15 volunteers are required for the full week as back up to Kenny Mackay and his team at the prestigious Surrey venue.

A course preparation team of 15 is required 19-24 May. Match raking takes place 21-24 May.

For the first two rounds there are approximately 52 match rakers, and for rounds three and four, 40 are needed.

This is another superb development opportunity on both a professional and personal level, with a fantastic camaraderie developing between the team.

Light clothing and refreshments are provided and a small marquee is provided as a base adjacent to the first fairway on the West Course.

Please note that no accommodation is provided at this event.

To apply, please fill in the application form and return to:

Rachael Duffy at BIGGA House, Aldwark, Alne, York YO61 1UF by the closing date of Friday 27 March 2015.



Name .....

Golf Club .....

Position .....

Age.....

BIGGA Membership Number .....

Home address .....

.....

.....

Email Address .....

Mobile Number .....

**I am available for:**

Full week .....

Thursday .....

Friday .....

Saturday.....

Sunday .....

Preference given to members who can do most/all days

Yes No

I have been a BIGGA member for more than three years .....  .....

I serve, or have served in the last three years, on a Section/Region Committee .....  .....

I have attended three of the last five BTMEs. ....  .....

I am/have been a member of the Open Championship Support Team .....  .....

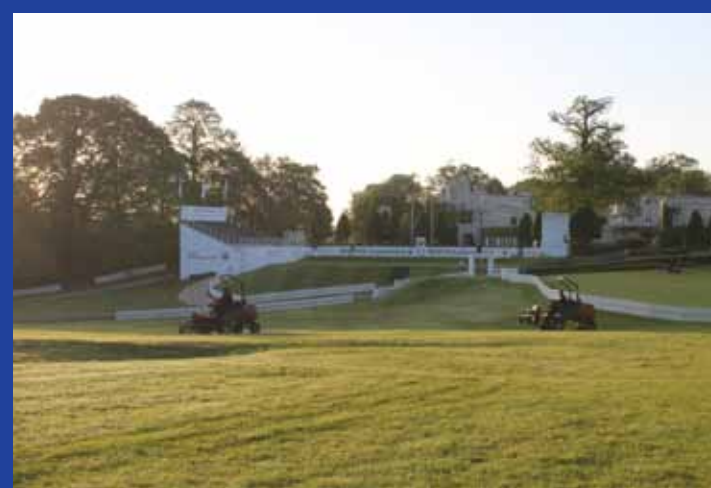
I have been a member of the BMW PGA Championship Support Team .....  .....

**Please email in a head and shoulders photo to rachael@bigga.co.uk** .....

**Polo shirt measurement; chest**.....

**Are you available for the Early Morning Prep team from Monday?** .....

Note: A place on the team is open to all full BIGGA members but priority will be given to the more active members. We welcome applications from members from all Regions, but priority will be given to members from the South East. **Please ensure that you have spoken to your golf club or Course Manager/Head Greenkeeper prior to applying and you are definitely available.** To apply please fill in the application form, enclose a passport photograph and send to Rachael Duffy, BIGGA House, Aldwark, Alne, York YO61 1UF. **The closing date is Friday 27 March 2015.**



IMPORTANT INFO



# How to finance your fleet

These days most capital equipment is financed, whether for use by golf courses or sports grounds, in fleets or as single purchases. This article highlights the increasing use of planned replacement finance as a way of making the most efficient use of your machinery without breaking the bank

**As a division of the company that builds the equipment, John Deere Financial is uniquely and ideally placed to provide a full range of financing options for John Deere golf course and other turf maintenance machinery sold by the company's dealer network.**

"We are committed to finding the right financing solutions for all our customers, particularly in the current economic climate," says John Deere Financial's UK general sales manager Cameron Renwick.

"Financing new equipment can help any business to forecast and fix their capital investment costs, while also taking advantage of the latest available technology. The programmes we offer are designed

to help golf clubs and other customers to access the finance they need to purchase new equipment and keep their businesses running efficiently and cost-effectively.

"These competitive finance solutions can be tailored to suit the individual cash flow needs of the business and provide flexible and affordable ways to maintain a reliable and up to date fleet of top quality equipment.

"They are also designed to make it convenient for customers to acquire the latest technology, such as hybrid electric mowers with Quick Adjust cutting cylinders or advanced amenity turf sprayers, which are also backed by dependable service and support from the local John Deere dealer."

Financing packages can also

include dealer maintenance and repair cover for selected machines. John Deere's PowerGard coverage options enable dealers to carry out a complete maintenance programme to a fixed budget, depending on the plan chosen by the customer.

"In recent years we have found that an increasing number of golf clubs, worried about the rising cost of maintaining and servicing older machines, are taking up replacement finance schemes," says Cameron.

"Instead of buying one or two items of equipment each year for cash, a financed package deal can enhance the entire turf maintenance fleet by spreading the cost over a fixed period – and another benefit is there will be an immediate improvement in the quality of

finish, something club members and visiting players notice straight away."

In any purchasing deal involving finance, it is important that a total package is discussed from the very start.

Things such as the dealer network and parts back-up, the machines and their suitability for the job, warranty and finance are only some of the areas that need to be considered, and all have an effect on the final outcome.

The first and main criteria any operator or manager of equipment needs to fully understand are exactly what machines are being used, what workload they usually encounter, how they have been funded previously, what (if any) replacement plan is in place and

**More information and a second case study next month**



## Finance case study: Bawburgh Golf Club Glen Lodge

The comprehensive machinery fleet at Bawburgh Golf Club Glen Lodge in Norfolk was renewed in 2014 with Norwich-based dealer Ben Burgess on a six year John Deere Financial hire purchase agreement, covering more than 20 machines including greens, fairway and rough mowers, Gator utility vehicles and compact tractors for use by Course Manager Gary Beckwith, five full-time staff plus an apprentice and driving range assistant.

"With the combination of ongoing low interest rates and subsidised finance, this deal was a no-brainer," says new General Manager Gary Stangoe. "The club has been able to plan and budget for an agreed sum of money going out annually, while knowing there will be no nasty surprises down the road.

"This builds in a good bit of security for us while the co-owners Robert and Jo Barnard continue to invest more widely in developing the club facilities overall – our capital's not completely tied up and we can sensibly tackle other projects.

"If you think most clubs must have on average a dozen or so machines in the shed, it would take eight to 10 years to replace the entire fleet – you'd never catch up if you simply bought one machine a year at around £20-£30,000, compared to budgeting a similar sum annually over the life of a finance programme. It's all about fixing costs, and the deal is even more bulletproof when you factor in the two-year warranty – you know all your costs, all the way to the next replacement. It's also good to have the reliability that new technology provides."



what is being spent each year on new equipment, spares and repairs.

While many owners and operators do have a handle on their annual budget and the cost of spares and repairs, the often huge expense of downtime is rarely accounted for. With a planned replacement programme, this key element of the whole life cost can be predicted far more effectively.

With John Deere equipment, for example, carrying a two year warranty, this means on a three year replacement programme you can fairly accurately predict most of your costs for the first two years. A tailored finance plan matched to the life of the machine means that replacements can be made at the right time before any major costs are incurred.

John Deere Financial offers a choice of hire purchase, finance lease, operating lease and contract hire with maintenance. The leasing and contract hire options in particular can help those clubs that operate on a partial or full VAT exemption basis. These options allow clubs to pay VAT on the repayments, which can help cash flow enormously.

Another significant consideration is that when equipment is bought for cash, if the customer cannot claim back the VAT, the full amount including VAT has to be paid; whereas with operating lease or contract hire, John Deere Financial can calculate repayments on the pre-VAT amount because it holds the title to the goods and can claim the VAT back.



# Back to school

Steve Castle headed back to school as he investigated how a two-man greenkeeping team are scoring top marks at a nine-hole course within the grounds of one of England's most prestigious public schools

**Heading into the Berkshire village of Bradfield conjures up images of Harry Potter and Hogwarts – or possibly James Corden's wide-eyed wonder at seeing Oxford or Cambridge for the first time in 'The History Boys'. Bradfield College is a boarding school, complete with imposing gothic buildings, and its pupils are renowned for performing Greek plays.**

Somewhere in this huge complex, almost hidden by several immaculate looking football pitches, is a nine-hole golf course maintained by just two full-time greenkeepers.

An impressive 300 members play here, many of them lecturers, teachers and various other employees of the college, and it's a small, undulating course full of character. Designed by Donald Steel, it was opened by Bernard Gallacher in

1998 and has six par fours and three par threes.

The greenkeeping team is Head Greenkeeper Alec Horsburgh, his assistant Aaron Parfitt plus two of the college's groundsmen, who alternate weekly bringing the team up to three. Alec joined in 2007, and said his main challenge at that time was to give the course some much-needed definition and character.

He said: "To be honest, the course was boring. Everything was

cut with gang mowers and it was a bit ropy. Even though I was an inexperienced Head Greenkeeper, I knew a few simple steps would improve it pretty quickly. The first step was to get a new mower and cut the grass with something that wasn't a gang mower!

"There were several rough areas of the course that had basically been abandoned, covered in thistles and nettles. We cut all this out and trimmed it all down. This really

opened up the course, and the next stage was reshaping the rough."

He admitted he's a perfectionist with a keen eye for detail even by greenkeeping standards.

"I'm almost obsessive when it comes to greenkeeping! Everything has to have some sort of a shape to it. I don't like jagged mown edges, everything has to have flowing curves and be smooth and tidy.

"Our longest hole the sixth, which is 418 yards off the whites, was like a runway; straight, boring. So we changed it.

"We made it wider for the higher handicappers and pinched it for the lower handicappers. You always find it's the lower handicappers who have the loudest voices when they want things done! That way it's fair for the lesser golfers yet still a decent test for the better ones.

"Some of the low handicappers were driving the green on another par four so we stopped the fairway short and put in about ten yards of rough. I haven't seen many people drive the green since we've done that. The greens are a bent/poa mix, they're in good shape but you always want to improve."

Alec would have liked to have made further changes by constructing new bunkers – the course currently has just nine. But he's forbidden from doing this as the course is situated in an Area of Outstanding Natural Beauty.

The biggest challenge of Alec's career arrived unexpectedly in 2007, a few short months into his tenure as Head Greenkeeper. Much of the country was battling devastating summer floods at that time, and Bradfield did not escape. A small ditch which normally trundles quietly alongside part of the course was transformed into a raging torrent by heavy rain, carrying logs, branches and silt through the grounds and parts of the course.

As well as wrecking the college's reception area, the water washed away a couple of access bridges, causing land close to a fairway to collapse and entirely emptied one bunker of all its sand. In total, 50 tonnes of silt was dumped on the front of the sixth fairway. All this came a fortnight before the club's biggest comp of the year - The President's Cup.

Alec recalled: "The water took everything with it – small trees, branches, bridges, logs... the college was also badly flooded.

"I was amazed when I saw the bunker that had been emptied. You could see the base, there was no sand left in it at all. All the sand had

ended up at the front of the green." He added sarcastically "that was fun". So how did this small team cope?

"We basically put everything else on hold for two weeks and concentrated on clearing everything up. Luckily the weather did improve a little, and we managed to get the course in decent shape for the Cup."

Alec was helped during that period, and for most of his time at Bradfield, by Dan Woodcraft, before Dan recently found a position at Wentworth. Alec is full of pride as he describes how Dan is now furthering his career at one of the world's most prestigious courses.

"I've always made it clear to anyone on the team that I would never stand in their way if they wanted to move on, and I'm so pleased for Dan. He was terrific to work with and I know he'll do really well in his career.

"Aaron has replaced him. His background is more on grounds rather than golf courses, but he's young, enthusiastic and keen to learn."

There's no committee at Bradfield – instead Alec reports to an Estates Manager who in turn works with the Bursar who is in charge of the purse strings.

"If I want anything I have to ask for it, but I'm learning how to ask for it differently. I go in armed with as much information as I can and basically present a case. I've gained in confidence with that and I think it's a really important skill for any greenkeeper to have."

Alec was born in Edinburgh and is a passionate Hearts FC supporter, but moved to the south of England with his family when he was three. His early career was spent mainly in construction and landscaping before he gained an interest in greenkeeping and joined Bird Hills Golf Club.

He was halfway through his Level 2 NVQ in Sportsturf when the club made major staff cutbacks – which included Alec and several other greenkeepers. He's phlegmatic about what happened, and completed his Level 2 before finishing his Level 3 in 2010.

"These things happen, and it's led to me ending up here which is a really enjoyable place to work. I have the minimum of interference here and I feel I'm really making my own mark on the place, even though I'm never satisfied.

"When Dan and I joined here we had around 170 members, two years later it had increased to 300 which reassures you that you're doing a good job."



# A greenkeeping Remedy

How the team at Remedy Oak Golf Club completed the mammoth task of replacing all of the club's greens - with help from Agronomic Services Ltd

**Q Rob, could you outline the project you undertook at Remedy Oak in the summer of 2014?**

A 18 greens in seven weeks! Originally we planned to core out 18 greens to 1.5 hectares in total, but it turned into much more. We closed for seven weeks and firstly, we lifted the existing greens turf by hand, placing it as close to the green as possible. We then cored out the old rootzone to the gravel carpet using White Horse Contractors, checked all the drainage and repaired or replaced any damaged areas.

We then imported 100 tonnes of 2/6mm gravel to top up the gravel carpets plus 350 tonnes of 90/10 rootzone per green to give us finished levels of 100mm deep gravel, and 300mm deep rootzone consistently across the greens. We then returned the greens in the same manner as they were lifted.

There was so much work involved. 1500 tonnes of commercial timber was extracted, and 180m of sleeper wall revetment was installed on two holes. Two in play ponds were deepened and reshaped, and new fairway drainage was installed on one hole and the driving range.

**Q Why did you decide to work with Agronomic Services Ltd?**

A During the lead in time to the construction period it was extremely important that we prepared the turf to the highest possible standard prior to lifting, and achieve the best possible root depth to enhance the recovery period.

I interviewed several companies who I felt could deliver the complete package, and decided to work with David Snowden from Agronomic Services. He assisted in designing a Foliar and Granular programme using the Floratine range of foliars

and Angus granulars in a three stage process; prior to lifting turf, prior to relaying and post laying.

I found these programmes and the process of application critical to the success of the recovery program for the turf. David was a big support in the run up to the first turf being lifted and throughout the construction period.

His knowledge and understanding of what we were trying to achieve was invaluable.

**Q Looking back would you prefer to seed import turf or use the existing turf?**

A Like most clubs, we are a commercial business so we looked at the option of whether to seed, import turf or use the existing turf, and we chose to relay the existing turf.

If I had had the option of a longer grow in period and knowledge of the weather in advance I would have chosen to seed. But, up to this point the results have been stunning.

**Q What were the project's highlights, and if you were giving advice what would it be?**

A The weather was terrific but I like to think this was no fluke. The construction period was chosen because recently it had been our driest time of the year. We now have a set of fully performing golf greens which are free draining and they have really been tested recently by heavy rainfall.

The aim is to bring all the greens back into play by early April (weather permitting) six months from the end of the construction.

Key advice is to plan, plan and plan! Also, speak to greenkeepers who have worked on similar project before for important tips, which is something I do very regularly.



ABOVE: Combined team of greenkeepers and club staff

**Q How many of your team were involved?**

A I felt I could meet our targets with a team of 20. We have 12 greenkeepers so I had to find eight extra staff.

As the clubhouse was closed as well as the course during this period we decided to utilise the chefs, bar staff and golf pros to lift and lay the turf.

Some may say this was a 'recipe

"I received a lot of help to pull this project off, but special mentions must go out to Steve Evans (Foreman for White Horse Contractors) who nothing was ever a problem to, and Murray Long for his help and support. A giant shout out also to the whole Remedy Oak team especially Ed Cary and Rob Wills, all you guys were awesome."  
Rob Hogarth, Course Manager, Remedy Oak Golf Club

for disaster' - but they were brilliant.

There was a real team spirit and passion to do the job well. This has pulled our team closer together and given everyone a new found respect for each other's job roles.

Next, GI spoke to David Snowden, Managing Director of Agronomic Services Ltd, to discover why he believes prescription is so important.

**Q You're a great advocate of foliar feeding, why is this?**

A We recommend true foliar feeding as opposed to soil liquid feeds which are often confused.

The feed enters the plant just like a doctor's IV drip into the patient. When a patient needs nutrients but is unable to ingest them naturally the doctor will administer an IV - this is precisely the idea behind foliars.

Visually we can see the difference within 24 hours and in winter it really is the only satisfactory method of being able to stack carbohydrates and feed the plant. Foliars bypass the root system, making pH, microbes, nutrient tie-ups, temperatures and other factors irrelevant.

Liquid soil and granular products rely on root uptake whereas foliars are taken into the plant



via the leaves bypassing soil and root health issues. The differences between a foliar and a soil liquid product can be established by the quality of the raw materials, application rates and spray volume and utilising a very fine spray mist.

**Q Why is it important to analyse the soil and water?**

A This helps us understand the limitation of the growing medium and then balance the soils to ensure that the soils perform to their optimum. We can identify what is in reserve i.e. the soil and also what is in solution and therefore has the potential to be available for plant uptake.

It is also vital to analyse the water source as this can have a major impact on spray applications and nutritional balance in the soil.

**Q What methods do you use, and how do you interpret the results and therefore prescribe the correct medicine?**

A We take the soil and rootzone samples and send them for analysis using the services of Ana-Lync who, I think, provide the most accurate and comprehensive soil evaluation in the industry today.

Ana-Lync use an extensive system to regionalise the soil evaluation, taking into account various soil, water and environmental conditions, this combined approach to understanding soils allows us to see them in a more complete or three dimensional light.

**Q You specialise in oxygen products, why do these work so well and did Remedy Oak use them?**

A Yes, as part of the overall plan we prescribed Oxy-Rush. We now offer a full range of oxygen products depending on what our customer is trying to achieve.

This may be on greens or fairways whether it's thatch reduction, removal of black layer and algae or to reduce or replace physical aeration.

In some cases physical aeration is not possible due to pressure to produce year round golf and Oxy-Rush has proven to be a valid alternative in these cases.

This can save turf managers time and money when the calculations are made and it has the additional benefits to the soil, which then in turn improves nutrient uptake. It's a win-win situation, fortunately we have the science and STRI test results to prove our Oxygen products work as well as testimonials from the industry.



**Q How would you sum up your approach and how did you become involved at Remedy Oak?**

A We recognise not one solution fits all and listen to our customers who understand and know their turf far better than we ever could.

We were thrilled to be invited to propose a nutrition plan to encompass all three phases of the project. I then met with Rob to discuss the proposal and explain my methodology. Rob was very focused in his approach and his understanding of what was required meant that he was able to make an informed decision. It was a privilege to be involved.



Better Moisture Distribution



Better Playability

**It contains more than you think!**



Better Soil Health



Better Root Growth

It's no surprise that Revolution is trusted by so many turf professionals around the world. It's the only soil surfactant that goes beyond water repellency issues, providing comprehensive water management and plant health benefits as well.

Revolution's patented formulation balances air and water in the soil profile, leading to a better root system and improved soil health. By maximizing the potential of your growing environment, Revolution helps turf function more efficiently and perform at consistently higher levels, even under stress.

Try it — and see the benefits for yourself.



Distributed in the U.K. by:



www.farmura.com  
tel: 01233 633 267  
info@farmura.com



www.aquatrols.com



# Moment of truth

As the new year begins, Henry Bechelet and Dr Andy Owen from Everris discuss how you can set up simple trials on your course to discover valuable data – rather than believing the hype of the latest turf ‘fad’

**Every year there seems to be some new fad, wonder product or technique that becomes fashionable with greenkeepers. They tend to emerge on the forums, be advocated on social media or have a seductive sales message to make them especially tempting.**

The wave of interest might even be compelling enough for us to try this new thing in the hope that a new miracle has arrived and we will all make some progress. And then, after a couple of years, the miracle usually stalls.

We then lose interest and something else comes along to take its place and we are all none the wiser. How about we stop doing this? How about we actually evaluate our

products properly to learn about them and get better at what we do? How about we tell you how? This could be the next big thing!

## ‘Seeing is believing’

If you’re interested, it is perfectly possible to carry out small informal trials on your golf course that could help you decide whether or not a product works and if it is worth adding to your maintenance programme.

With the right planning and a little bit of attention to detail you can test the claims and gather some data yourself to allow you to make informed decisions about the effectiveness of the product on your golf course, under your unique conditions.

## ‘Garbage in, garbage out’

So, if you want to carry out trial work on your course to test a new product there are a few steps to consider. If you want meaningful results then you need to set up the trial correctly.

Firstly, any product testing will need to be done under realistic conditions, at the right time of year, on the recommended area of use and under appropriate maintenance.

Any shortcuts here will just produce meaningless results and lead to a misinterpretation of the situation. Don’t bother with a bad trial set up. Consider what areas are available and what time you have. Not everyone will have the luxury of a turf nursery to carry out a trial, so select an area of your course.

## about the author



### Henry Bechelet

After working in the turf and amenity sector for over 20 years, Henry then joined STRI as a trainee agronomist. He then became Northern Technical Sales Representative for a fertiliser supplier. He rejoined STRI in 2000 as an agronomist before joining Everris as Technical Sales Manager. He is a familiar industry figure and hugely popular speaker.

MAIN: A greens trial string out for treatment

INSET: Trial plots marked out and ready for assessment



## ‘It is all in the design’

To design your experiment you need to follow a few simple rules. To start with, be clear on what you are trying to find out (whether it works, how it compares etc).

This will dictate which products you are wanting to evaluate. It is usual to run a ‘control’, which is an area with nothing (or just water) applied.

The control area provides a check on what would have happened without any product being applied, so the true treatment effect can be assessed.

Another key rule would be to replicate the treatments where possible. Applying the treatments to different areas will help to confirm the consistency of effect. Ideally, a minimum of three replicates should be planned for each treatment.

For testing multiple treatments, there should not be any order to your applications and each treatment should be assigned a plot randomly to avoid any bias. It is important to give everything an equal chance.

## ‘Data is king’

Plan to collect data regularly, note measurement days in your diary and try to stick with them.

Images are very valuable – try to photograph at the same time every day, from the same orientation.

Take images between two plots and build up an image bank of the trial. Try to develop a process whereby the images are taken in a set order, on set dates. Data collection is all about being organised and consistent.

## Data interpretation

A well-planned, designed and executed trial can produce some powerful data. You do not need to be a scientist to make a clear interpretation of the results.

Simple bar charts showing differences between treatments are informative. A line graph showing change of effect over time can be really effective for decision making.

Even a string of images can create a powerful message as to whether a product is useful or not. Sometimes the very fact you have put a product down and assessed it regularly allows you to make a really informed decision on its performance.

By carrying out a few informal trials each year you can begin to understand the effect the treat-



It could be the corner of a practice putting green, an area of fairway or a tee which doesn’t see a lot of use.

If possible, choose an area close to your office as you will need to visit regularly to assess progress.

Carrying out your own on-course experiment does not have to be time consuming but it will take some time to set up the trial, apply treatments and make assessments, so plan accordingly.

Perhaps the trial responsibilities could be shared among team members as part of ongoing CPD or a work-based learning course.

Whatever you choose to do – plan it carefully and the results will be useful, and hopefully enlightening.

## about the author



### Andy Owen

Andy is a soil scientist and agronomist. He began his career carrying out contract research into plant protection products before joining STRI as a research officer. He’s spent the past eight years passing his expertise on to the next generation of turf managers as a Lecturer in Sportsturf Agronomy at Myerscough College. He is now International Technical Manager at Everris.

Assessments can be simple, for example scores for turf colour (1–10 scale), or turf quality (1–10 scale) are commonly used.

Percentage of surface affected by disease, number of weeds, and amount of earthworm casting would be other examples of data easily collected.

If possible, measured data could be collected too. Soil moisture content measured with a moisture meter, green speed, surface hardness or smoothness, could equally well be assessed if they are relevant to the treatments being applied.

Collect data and immediately write it down or record it on your smartphone. Add it to an Excel data sheet as soon as possible to keep the data organised.

ments are having on your surfaces to help you perfect your maintenance programme.

## Trials are important

We hope that we all agree that if we are to make progress then we need to evaluate the performance of our products properly.

At Everris we test all our products and base our formulations on trial data. We think that this helps us make the best products on the market but you don’t have to take our word for it.

If you are interested in setting up on course product testing trials but need some help getting started then please get in touch – henry.bechelet@everris.com or andy.owen@everris.com



# Get with the programme



Planning a fertiliser programme? Then there are five basic things to remember according to Headland Amenity's Andy Russell, who says if you 'Fail to measure, then you should plan to fail'

**Top of the list is to always carry out a soil analysis, and then remember that any programme you prepare, is a guideline only. Thirdly, plan around your management practices and don't neglect winter nutrition. Lastly, consider the real cost of fertilisers.**

The starting point when putting together a fertiliser programme is a soil test to measure the available nutrients in the soil.

Apart from the immediate impact of understanding the existing nutrient status, it will serve as a benchmark to compare to future results to understand any changing trends.

Without this, we have little idea whether the existing availability of nutrients will be sufficient to maintain the plant going forwards and over time, and you can't monitor the effect of the program on the residual soil nutrition.

For most consistent results, tests should be carried out at around the same time of the year, but frequency will depend on the soil type in use.

As a guide, new sand dominated USGA greens may need annual testing, at least in the first few years, whilst an older, established clay-based green may only need testing every three years or so.

The soil test will highlight any available nutrient deficiencies or indeed excesses and these can be

taken into account when planning fertiliser inputs.

In addition, a quality soil test will also report other parameters such as organic matter content, cation exchange capacity (CEC), salt concentrations and good old pH. Whilst these things will have a bearing on any proposed fertiliser additions they may also highlight the need for some other cultural and maintenance operations.

However, when putting together a plan or programme of fertiliser applications, it is a common mistake to think that once written on paper the plan cannot be flexible.

Indeed, it must be flexible! Growth and development of grasses is hugely influenced by the weather



INSET BELOW: Soil sampling

ABOVE RIGHT: Selecting the right type of fertiliser is key

RIGHT: Soil sampling and investigation helps structure a good fertiliser programme.



Next, a strategic fertiliser program does not just take account of soil nutrient status and the needs of the grass plant going forwards. It also takes into account any management practices and practical elements that have an impact on the day-to-day running of the facility.

Many clubs will hold an important tournament or event and will structure the program to make sure the turf is looking its absolute best at this point in the year.

Solid fertiliser products are often undesirable during the summer months as they can be easily seen in the sward if they don't break down rapidly, and can interfere with the playing surface. Liquid or soluble products might be more suitable during this period and can be applied rapidly and unobtrusively.

Another issue that should be considered is the application of products around planned aeration. The programme should be structured to take account of these periods, ensuring the turf is not stressed before the operation and ensuring rapid and strong recovery post-maintenance.

With seemingly milder autumns and winter periods, plant nutrition through this time is key. Low rates of nitrogen can be applied where soil temperatures allow and growth is occurring.

In addition, applications of plant protectant nutrients (e.g. potassium, calcium) can help to strengthen the plant and minimise stress.

Focusing on the autumn period specifically, recent research carried out at STRI shows we can tailor nutrient input to help manage

disease during its most prevalent period.

Using plant protectants and plant elicitors as a preventative measure can help to minimise disease and in turn, reduce or even eliminate fungicide inputs.

Without addressing turf nutrition, plants in warm winters can stress, weaken and lose colour. This weak plant is then slower to respond in the spring and is more susceptible to disease. The aim must be to maintain a strong, healthy plant throughout this time to ensure a consistent dense sward will result in the future.

Last but not least, the potential cost of any fertiliser regime must be established at an early stage. Clubs have to operate within tight budgets and the emphasis must be on getting the best result possible for the best possible cost.

Fertiliser bag prices must be compared carefully as the amount in each can vary. 25kg bags are common but 20kg or even 15kg are available, making it important to do the sums to calculate what is good value for money.

Another cost implication will result from the application rate used. High analysis products often can have an advantage as they may be able to be applied at lower rates (where granule size allows) – thus providing better value.

Soluble fertilisers can be extremely cost-effective in comparison with some liquids, however they carry an increased time/labour element in preparation.

Clubs who can purchase materials ahead, and for the whole season, can reduce unit costs where cash flow allows.



# New year, new fleet

Versatile and hardworking machinery is essential for all landscape professionals. Kubota's new range of compact machinery promises much in 2015




**Kubota (UK) celebrated 35 years in the UK market last year, an anniversary which was cause for celebration not only because it was a key milestone in the development of the brand in the UK but also due to some key new product launches.**

At the close of 2014, Kubota released two new products - the RTV-X900 utility vehicle and the STW Series compact tractor. Both compact tractors and utility vehicles are key items of kit in the

professional landscaper's arsenal, either through hire or purchase, and Kubota has grown in prominence in this market over the last decade.

The utility vehicle market is one that Kubota has made significant inroads in.

The company was quick to spot the gap in the market brought about by the dip in the appeal of quad bikes in the mid '00s; there was a growing appetite for a safer machine with more muscle, a greater capacity to carry out a range

of tasks and to cope with the more varied workload.

In response to this shift, Kubota released its innovative the RTV900 - the first 4WD utility vehicle to feature hydrostatic transmission for safe hill climbing and controlled ascents.

Keen to build on the success of its predecessor, Kubota launched its latest utility vehicle, the RTV-X900 last year, the new model boasting all the same rugged build qualities and superior reliability as the original RTV900, but with the

Arguably the most sought-after feature on Kubota's utility vehicles is its unique dynamic braking, which provides additional braking power and greater driving control on descents.

This specification remains key to the range, whilst the new model is fitted as standard with a high rigidity frame, which helps to isolate passengers from noise and vibrations whilst also ensuring the machine is durable enough to carry heavier loads. Limited-slip front differential and locking rear differential brakes help reduce wheel spin, allowing greater control in wet conditions.

The new X-Series utility vehicle has an impressive 10.4" travel height, allowing the vehicle to glide over lumps and bumps, resulting in its unrivalled status in the market for ground clearance. This is a key USP for operators, especially when working with fine turf and across undulating terrain.

Height adjustable front and rear suspension ensures the correct vehicle height is maintained, depending on load, and the fully independent suspension system offers impressive ride comfort and quality.

Kubota's latest vehicle also builds on the range's already impressive load and towing capability with an increased maximum capacity of one tonne, including a 15.2 cubic foot cargo bed. Loading and unloading can often be a challenge, especially if manual operation is required. The addition of a hydraulic lift bed on the RTV-X900 means heavy loads can be dumped in seconds, helping to save operator time and improve safety.

The introduction of the RTV-X900 is a big step forward in the development of diesel-powered utility vehicle. Improved vehicle control and fewer gear shifts are just two improvements on the model, thanks to Kubota's transmission gearing - just two forward speeds (high and low), plus neutral and reverse.

Some of the biggest changes on the RTV-X900 have been made inside the cab, with the introduction of 60:40 split-bench seating; power steering; an easily accessible parking brake; generous under-seat storage compartments and a digital metre cluster with bright, easy-to-read instructions.

The RTV-X900 also features a vertical-opening front window for easy access to the cab and enhanced dumping as well as a host of custom options including side doors for full protection from

the elements; a heating and cooling system and radio console.

Alongside the RTV-X900, Kubota also launched its new STW Series compact tractor, an updated and improved version of the existing STV range. The STV Series has been popular in the amenity turf sector since its launch, but the new range improves on the existing offering in both performance and operator comfort.

The STW Series includes three new diesel tractor models: STW34, STW37 and STW40, all of which are available with an optional factory-equipped cab. The addition of the 12V power socket is another nice feature, allowing users to recharge smartphones or other electronic devices.

All three models feature hydrostatic power steering, which means a tighter turning circle and a reduction in operator fatigue when carrying out front loader work. Standard with the STW Series is Kubota's unique Bi-Speed Turn, a feature which allows operators to enjoy quicker, smoother and tighter turns, whilst also minimising potential damage to ground surfaces and fine turf.

Arguably the crowning glory of all Kubota machinery, and part of the reason for its enduring popularity, is its diesel engines. Fitted on the STW Series and all of its tractor and groundcare machinery as standard, the STW engine delivers a stable output of 2700 RPM.

The machine's large torque rise is handy when working at low speeds and for operators needing to travel swiftly between sites.

The STW Series has the fastest maximum travel speed in its class - 34.1KPH. The new range features 2-speed rear PTO and 1-speed mid PTO to maximise performance regardless of the task, from mowing through to front loader and trailer work. Its large hydraulic pump capacity, with a flow rate of 30 l/min, is also ideal for a wide variety of implements.

The appeal Kubota's compact tractor range and its utility vehicle offering continues to grow among golfing and landscaping professionals. Long days and extended seasons - this year being a prime case in point - means that the working year is increasingly being stretched out and as such and the demand on the tools tasked with carrying out the work is intensifying.

Investing in a reliable, hardworking and versatile fleet of machines will stand industry professionals in good stead for the coming year.



# Focus on Ryegrasses

Dr David Greenshields, Research and Development Manager at Barenbrug, focuses on the potentially huge benefits of ryegrasses on the UK's golf courses

**A bold statement to start; in my opinion, perennial ryegrass usage should form part of every golf course maintenance programme in the UK.**

For most facilities, it's an absolute necessity and even on the best drained sites with minimal play, there will be areas that suffer from factors such as wear or shade that result in turf loss of other grass species and the subsequent invasion of *Poa annua*. The key is to select the right ryegrass cultivars for the job, and target their use to specific areas.

**Benefits of ryegrass over other turfgrass species**

Potential benefits of perennial ryegrass over more traditional summer sport turf species are well documented. Their far superior wear tolerance and ability to survive in cold and damp rootzones has already resulted in their almost ubiquitous use in clay-dominant cricket squares and tennis courts.

In terms of practical usage in golf, their ability to germinate at far lower temperatures and establish faster than fescues and bents has enormous implications in allowing turf renovation to be performed outside of the summer playing season. Even maintenance-wise they have significant benefits, producing far less thatch than other species, despite having higher nutrient demands.

**It's all about the blend**

Specific applications and environmental conditions demand different characteristics and performance capability. Within the ryegrass species, characteristics such as tolerance to wear, drought, disease, salt, shade, mowing height, cool temperature growth, leaf width, colour and recovery following stress vary considerably. The extensive ryegrass breeding and applied research and development programme at Barenbrug enables us to offer greenkeepers a



Got a burning question? Get in touch with Dr David Greenshields, Barenbrug Research and Development Manager for in-depth technical advice. Tel: 01359 272000. www.barenbrug.co.uk

distinct range of cultivars in blends and mixtures specifically designed to meet these varied demands.

For example, 'wear tolerance' is a difficult characteristic to quantify. It is most commonly assessed by analysing visually or by objective means how much ground cover persists after a period of artificial or real wear. Barenbrug undertake wear trials at many of our Research Stations, including our trial site at Cropvale in Worcestershire and at Bingley as part of the BSPB Turfgrass Seed Booklet assessments. In terms of individual cultivars, Barorlando and Barcristalla have excelled in recent years.

Different wear actions impact varying degrees of damage, whether through high footfall on golf courses or the demands of a tee. Environmental conditions and maintenance programmes also impact on the capability of a cultivar to withstand wear pressure.

Wear tolerance must be considered alongside such pressures as

disease, mowing height, shade, nutrient input and drought when choosing your blend of ryegrasses. Such constraints significantly influence the capability to tolerate wear. In almost all circumstances, a combination of varieties - a tailored synergistic seed mixture - will outperform any individual cultivar.

For instance, our most popular golf rye blend Bar Extreme is formulated to offer predominantly a balance of wear tolerance, close-mowing ability and aesthetic quality (fineness of leaf and mid-green colour).

This differs entirely to a mixture like Bar Sprint (for equestrian sports) where speed of establishment and recovery are of far greater concern.

**Choosing perennial ryegrass for golf**

When considering ryegrass varieties for use in golf, fineness of leaf is a particularly important trait. There is a strong correlation between fine leaf width and the ability of a cultivar to tolerate the lower heights of cut associated with golf. In addition, commonly in golf, ryegrasses are blended with fine fescues - put simply, the finest ryegrasses look far better aesthetically in a mixed sward.

Figure 1 highlights the remarkable breeding achievements during the last decade which have created an unrivalled portfolio of extremely fine-leaved cultivars for golf.

Bargold, and more recently Barsignum and Barolympic have all set new standards for the species.

**Introducing the next generation of ryegrasses**

Barolympic looks set to become

the new "gold standard" for summer sports ryegrasses.

Not only is it ranked #1 on Table L1 in Turfgrass Seed for mean performance and fineness of leaf, but it also has the palest genetic colour of all available ryegrasses (see Figure 3).

This is of huge advantage in summer sports, when ryegrasses are often maintained in mixed species swards with paler grasses such as red fescues and *Poa annua*.

The ability for Barolympic to blend in aesthetically to this environment, whilst dramatically improving the wear tolerance of the surface will be invaluable to sports turf managers.

If ryegrasses are needed to combine heavy wear tolerance and close mowing, selecting a synergistic blend of varieties like Bar Extreme is recommended.

The adoption of Bar Extreme as a divot mix allows successful repairs to be made earlier and later in the year and has even been shown to extend the playing season when used on tees for a prolonged period.

If combining ryegrasses with fescue for medium/fine turf applications, selecting a variety with the finest leaf possible and pale-green colour is often considered best practice.

Bar Platinum blends 30% Barolympic with 70% fescue to offer a good degree of wear tolerance whilst maintaining exceptional turf quality and aesthetics.

The blend contains #1-rated Chewings and slender creeping fescues Barlineus and Viktorka and has been used with great success on all areas of golf courses, including greens.

**The future of ryegrasses?**

The newest addition to our portfolio of golf mixtures is Extreme RPR, a blend that supplements the benefits of Bar Extreme with revolutionary Regenerating Perennial Ryegrass technology.

Barenbrug-bred RPR cultivars such as Barclay II provide a new dimension for the species by being able to produce determinate stolons as they develop and grow.

This development allows perennial ryegrass to spread further into its surrounding area, potentially repairing gaps in the sward as they appear.

This is great news for anyone using ryegrass for divot repair or overseeding by mechanical means such as a disc seeder, as RPR has the ability to "fill in" more quickly than conventional varieties.

RPR has been used with phenomenal global success for winter sports pitches, and now course managers and head greenkeepers have access to this exciting development in a dedicated blend for golf.

**Conclusion**

In conclusion, it can be seen that in my view, the bold opening statement should actually be a maxim for all golf course managers.

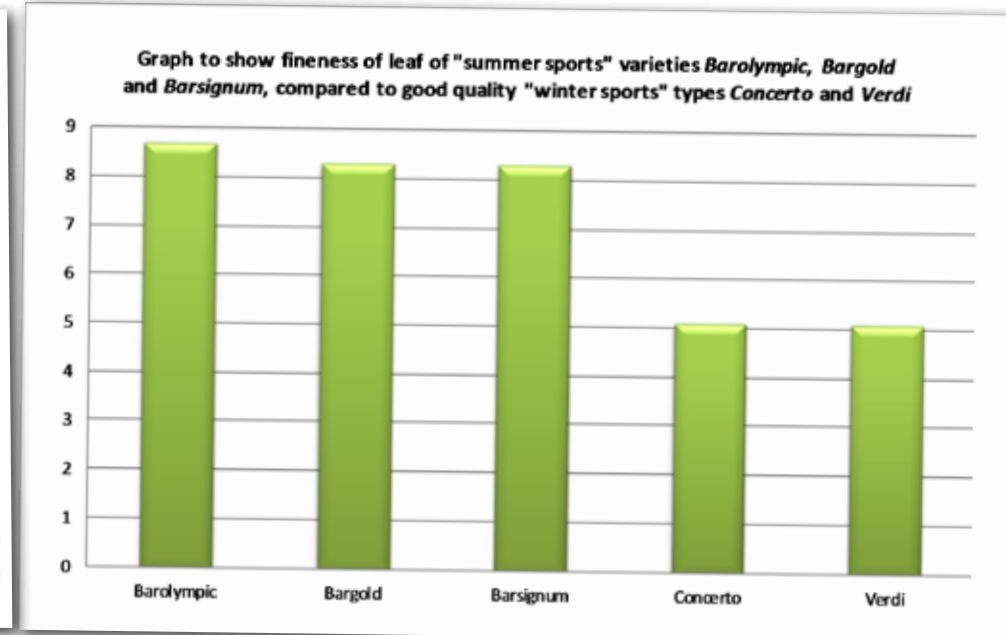
By adopting perennial ryegrasses in the right areas, there is huge potential to improve turf quality and playability across the course; just make sure to select the right varieties for the job, and if in doubt, ask our experts!

Please contact Dr David Greenshields, Barenbrug Research & Development on 01359 272000.

Figure 1 (BELOW GRAPH): Fineness of Leaf scores of selected ryegrass cultivars from Table L1 Turfgrass Seed 2014, scored on a scale 1-9, with 9 = finest leaf, 1 = broadest.

Cultivar	Mean Colour
Barolympic	4.84
Chardin	4.91
Mondial	4.97
Taya	5.04
Venice	5.07
Barrocky	5.08
Poseidon	5.10
Mercitwo	5.11
Kokomo	8.17
Stravinsky	8.21
Neruda I	8.35

Figure 3 (BELOW LEFT): Colour data for palest and darkest ryegrasses from Turfgrass Seed 2015; combined data from Tables S1, L1 & G4.







# Growing, mowing and fungicide spraying

This month Dr Terry Mabbett looks at the 'cutting edge' of turf disease and examines the many different ways in which golf courses experience turf damage

There is an interesting set of inter-relationships between grass growth, mowing and fungicide spraying  
(Picture courtesy Syngenta)

**A well understood set of factors makes sports turf particularly susceptible to disease, with some like heavy footfall setting turf apart from most, if not all other plant production systems.**

That said, frequent high intensity mowing is probably the single biggest, albeit unavoidable, factor predisposing professional turf to disease at the hands of wound-infecting pathogens.

## Factors affecting infection

Intrinsic to sports turf is the 'eternal' thatch layer of dead and dying grass tissue at the base of the sward, and the feeding ground for a large number of different fungal saprophytes - the majority of which stay in saprophytic nutrition mode.

However, a few 'loose-cannon' pathogens like *Microdochium nivale* (Fusarium patch) and *Colletotrichum cereale* (anthracnose) may lay in wait before exploding into full-blown parasitic modes to cause economically damaging levels of disease in response to changing environmental conditions and the dynamics of grass growth.

Next is the perpetual pressure on turf managers to make greens look great day in, day out with colour the most important but often the most superficial of players' demands.

Greenkeepers are well aware of the double-edged nature of lush green grass growth but pressures to keep fine turf appearing pristinely green with quick fix fertilisers is always there, and over-egging the nitrogen will invariably create ideal conditions for turf disease.

In late spring and early summer when grass growth takes off is the time to reduce nitrogen.

Also on the list is wear and tear mostly from the pressures of play but additionally the fleets of wheeled vehicles and machinery essential for contemporary sports turf management.

Of course, these machines are generally on the turf almost every day. Acute stress caused by physical damage to grass plants and chronic stress caused by soil compaction reduce the resilience of sports turf to fungal infection and disease development.

Damage which can open the way for fungal infection comes in a wide range of forms. From obvious examples like the cuts, tears and abrasions as collateral damage from aeration, de-compaction and de-thatching programmes, to much more subtle forms of damage.





Classic fall-out from the latter is the anthracnose pathogen exploiting turf grass plants bruised by golf balls landing on the green. It is not uncommon to find anthracnose appearing in autumn as tiny and discreet round patches corresponding to grass plant bruising from the force of impacting golf balls.

Once a green is infected with a prolific spore producing pathogen like *Microdochium nivale* (Fusarium Patch) wheeled machinery will simply spread the infection across the golf green.

When used on Fusarium-infected greens carrying excess surface moisture, fungal spores are freely spread and the disease can subsequently show up as tramlines across the green corresponding to wheel movements.

**The cutting edge to turf disease**

All that said, the single biggest clear-cut factor contributing to turf disease is removal of leaf tips every time mower blades clip the surface, and on a daily basis when growth is fast, playing pressure high and turf management accordingly intense.

Mowing may only sever several mm of grass leaf but each time a

new clean-cut wound is inflicted cell sap rich in sugars and soluble nutrients exudes to form discrete droplets at the cut surface.

Wound pathogens are therefore presented with prime points and routes of entry into the leaf and a favourable substrate for spore germination, infection and disease establishment.

A less appreciated dimension to mowing is loss of fungicide from on or inside excised portions of leaves and placed there to protect the leaf against infection or to manage existing fungal infections inside the plant.

Mowing carried out at times of high disease risk will almost certainly be cutting grass which has previously been sprayed with a fungicide product.

Careful consideration of fungicide fate in relation to mowing is important on three counts. The fungicide is there for a purpose - disease control - and if removed in the clippings it cannot do the job.

Turf fungicides are an important and costly element of sports turf management and mowing fungicide-treated grass is unavoidably throwing money onto the clippings heap.

**Contact protectant versus systemic suppressive fungicide**

The growing, mowing and spraying scenario for contact protectant fungicides is relatively simple and straightforward.

These traditional fungicides remain on the leaf surface as sparingly soluble deposits to protect the leaf by killing the fungal pathogen at some point during the spore germination and leaf infection process.

Mowing will automatically remove fungicide adhering to those distal leaf portions excised as clippings and new leaf growth put on by the plant after mowing will remain unprotected until the next fungicide spray.

The design and development of systemic fungicides which first appeared in the early 1970s brought a whole new dimension to turf disease control.

Superior versatility of systemic fungicides for turf disease control is afforded by their ability to be taken up by the leaves and/or roots and be moved around inside the plant to a greater or lesser extent.

By the same token systemic fungicides tend on balance to buffer the impact of fungicide loss from



**ABOVE:** Get it wrong and diseases like Fusarium Patch shown here will soon 'get away' (photo: Bayer)

**ABOVE LEFT:** Mid-summer and fast growing turf grass is not the time or the place to be using contact protectant fungicides

**ABOVE RIGHT:** As the autumn period comes to an increasingly 'bitter' end and grass growth slows right down, a contact protectant product to 'see' the turf safely through the winter is the most appropriate choice of fungicide

**RIGHT:** Greenkeepers are well aware of the need to consider mowing schedule in relation to the timing of fungicide sprays



mowing on turf disease management.

A key benefit of systemic fungicides is that once inside the leaf, the actives form a protective shield from within while inhibiting and suppressing established infections inside the grass plant.

Curative and eradicant are terms frequently used to describe the capability of systemic fungicides, although it is doubtful whether any will completely eradicate a fungal infection from within the grass plant tissue.

Systemic fungicides can provide a protective function while on the surface of the leaf and before the active fungicide molecules gain entry into the plant.

As regards effect of fungicide loss from mowing there are several distinct advantages of using a systemic fungicide. First benefit relates to the truly systemic fungicides and their subsequent movement into all parts of the grass plant (following absorption by the foliage and/or root system).

Mowing will still remove the same several mm of leaf but only take with it a minuscule amount of the systemic fungicide. New grass growth put on post-mowing will be

protected by fungicide moving out of its reservoir within the rest of the plant and into the new leaf growth.

An extra potential benefit is protection of the cut leaf ends. Sap seeping from cut ends as discrete droplets may contain systemic fungicide.

**Growing, mowing and fungicide spraying**

Relationships between growing, mowing and fungicide spraying are of immense practical significance in practical turf management. Essential to the equation is choice of contact protectant or systemic suppressive fungicide in relation to the rate of grass growth.

There is no point in using a systemic fungicide when growth is slow or non-existent because efficient uptake through leaf or root requires grass to be in an active state of growth.

Equally there is no mileage in using a contact protectant fungicide during periods of rapid grass growth because within hours of application there will be new leaf surface unprotected against disease.

Contact protectant and systemic suppressive fungicides which only

gain entry via the foliage logically require more exact spray application. Fungicide deposited on the foliage will perform the intended function but any running off into the soil is essentially lost and wasted.

Systemic fungicides able to enter the grass plant through the foliage and the roots are correspondingly less sensitive to spray specifications including higher volume rates resulting in run-off or any wash-off effects of rainfall or irrigation before fungicide deposits are properly dry.

So, there is the opportunity for roots to have a second bite at the fungicide cherry.

It is instructive to know the time period for a particular systemic fungicide to penetrate the cuticle and epidermis and move into leaf tissue.

Mowing too soon after spraying may remove a disproportionate amount of systemic fungicide if the product is still on the surface of the grass plant.

This problem should not arise with a contact protectant fungicide provided it is applied at an appropriate time, which is during periods of low or zero grass leaf growth.



# We want you

Join the BIGGA Open Support Team at the home of golf in July 2015

**Now is your chance to join BIGGA's Open Championship Volunteer Support Team for the 144th tournament at St Andrews in July 2015.**

The R&A have again asked BIGGA to supply a Support Team of volunteer greenkeepers and The R&A will again be providing accommodation, food, refreshments and uniform.

This team, made up of full BIGGA members, will support the home greenkeeping team at St Andrews.

Arriving on site on Sunday 12 July, members of the team will be required to rake for the players

during the tournament itself. You may also be required to help out with early morning preparation work and evening divot duties until the end of the final round on Sunday 19 July.

It's intense and tiring, but a superb professional and personal development opportunity, and also an excellent chance to meet the home greenkeeping team and other BIGGA members from across a huge variety of courses.

Tony Bartram, Greenkeeper at The Richmond Golf Club, was a member of last year's team and

summed it up when he said "You must apply, try and get picked and enjoy it for yourself. The best moments of my life are my wedding day, the birth of my son and now walking up the 18th on the final day of The Open. As I walked over the bridge at the end I was really quite choked because it hit me it was all over."

To apply, please fill in this application form in full and return by post to Rachael Duffy, BIGGA House, Aldwark, Alne, York, YO61 1UF by Friday 30 January 2015. The team will be announced in February.



Name .....	I have applied for/appeared on the team at:	Applied	Successful
Golf Club .....	Royal Liverpool, 2014 .....	<input type="checkbox"/>	<input type="checkbox"/>
Position .....	Muirfield, 2013 .....	<input type="checkbox"/>	<input type="checkbox"/>
BIGGA Membership Number .....	Royal Lytham & St Annes, 2012 .....	<input type="checkbox"/>	<input type="checkbox"/>
Home address .....	Royal St George's, 2011 .....	<input type="checkbox"/>	<input type="checkbox"/>
.....	St Andrews, 2010 .....	<input type="checkbox"/>	<input type="checkbox"/>
.....			Yes No
Email Address .....	I have been a BIGGA member for more than three years .....	<input type="checkbox"/>	<input type="checkbox"/>
Mobile Number .....	I serve, or have served in the last three years, on a Section/Region Committee .....	<input type="checkbox"/>	<input type="checkbox"/>
.....	I have attended three of the last five BTMEs. ....	<input type="checkbox"/>	<input type="checkbox"/>
<b>Passport photo attached?.....</b> <input type="checkbox"/>	I am/have been a member of the PGA Championship Support Team .....	<input type="checkbox"/>	<input type="checkbox"/>
<b>Waterproof measurements; waist.....leg length.....</b>	I am willing to be a mini bus driver (You must have held a full driving license for three years and be over 25 years of age.).....	<input type="checkbox"/>	<input type="checkbox"/>
<b>Polo shirt measurement; chest.....</b>	I am an overseas Member .....	<input type="checkbox"/>	<input type="checkbox"/>
<b>Are you available for the Early Morning Prep team from Monday 13th July? .....</b> <input type="checkbox"/>			
<b>Sunday final night (19th July) accommodation required? ..</b> <input type="checkbox"/>			
<b>Any specific dietary needs?.....</b>			
<b>If so please state .....</b>			
<b>Please declare any medical issues we should be made aware of .....</b>			

IMPORTANT INFO

Note: A place on the team is open to all full BIGGA members but priority will be given to the more active members. Subject to the availability of sufficient numbers of experienced team members no regular team member will be selected for more than three teams in succession. A limited number of places will be made available to younger members and overseas members. **Please ensure that you have spoken to your golf club or Course Manager prior to applying and have arranged the time off.** To apply please fill in the application form and enclose a passport photograph and send to Rachael Duffy, BIGGA House, Aldwark, Alne, York YO61 1UF. **Closing date is 30 January 2015.** You will be notified by the end of February if you have been successful.







All the latest news from your Section, in your new-look notes pages...



# Around the green

## South West & South Wales

Contact your Section correspondent with news, events or anything else for Around the green...



**SOUTH WEST** - Jaey Goodchild j.goodchild@bowood.org  
**SOUTH COAST** - Russell Riley rriley@countrywidefarmers.co.uk  
**DEVON & CORNWALL** - Cameron McMorris cjmcmorri@gmail.com  
**SOUTH WALES** - Andrew Hatcher andrewhatcher1@msn.com

### Events Coming Up

#### SOUTH COAST

South Coast Seminar 18 February, again to be held at Milton Abbey School, with some good speakers including Rob Hogarth and Greg Evans.

#### SOUTH WEST

A valuable opportunity for certified chainsaw operators to undertake refresher training has been organised for January. Dates are yet to be confirmed allowing flexibility in scheduling. Please contact Paul Worster (paulw@mgnnews.co.uk) or Stuart Bowman (s.bowman@thornburygc.co.uk) for details.

Please keep an eye out for the South West fixtures list to be published shortly after Christmas. All of our Section events are open to members of other sections, please feel free to attend as everyone is welcome.

### News

#### SOUTH WALES

The regional conference was a huge success with great speakers, very low numbers attending from our section, but lots planned for this year, we just need more support.

Congratulations to Ian Kinley and his team at Royal Porthcawl GC, they won the BIGGA/Baroness Championship Greenkeeping Performance of the Year Award at the IOG Awards.

Rhys Norville is the new Sales representative for

Avoncrop Amenity. Good luck in your new venture.

Great attendance for our Christmas Comp at Glyn Neath GC heavy rain the previous night, but the course held up extremely well, excellent condition.

Results: 9th Big D - Clive Moran 12th & Peter Lacey on the 15th, Longest Drive - Ian aka The mighty Kinley, Best Trade Peter Lacey, Main Comp: 3 Big D, 2 Marc Anderton, 1 Rhys McDonough. The section's fixture list for 2015 will soon be sent by email or your preferred method of contact. If you have news for GI please call me on 07429 315987 or Email.

#### SOUTH COAST

Turkey Trot at Barton on Sea - we would all like to pass on our thanks to Tony Gadd and his team for the course, it was in terrific condition.

Also thanks to the Clubhouse and catering staff for making us feel very welcome and dishing up a great meal. Results: 1 Brock 1, Kevin Glass, Jackson Ainley and Doug Spencer, 2 Remedy 1, Rob Hogarth, Pete Corrick and Matthew Clarke, 3 Ed Cary, Gareth Thomas and Rich Mortimer. Nearest pin Tony Gadd, longest drive Phil Nason.

I must also add that our score was ticking along nicely until we stepped onto the 18th tee facing the island green - we sent down three into the water! For any info regards future events please check our website [biggasouthcoast@hotmail.co.uk](mailto:biggasouthcoast@hotmail.co.uk) or email [rriley@countrywidefarmers.co.uk](mailto:rriley@countrywidefarmers.co.uk)

#### SOUTH WEST

Yet again there was a sterling turn-out for the Christmas Tournament held at Cirencester Golf Club. A substantial amount was raised for the Greenkeepers Benevolent Fund through the raffle, thanks to Nobby for all his efforts in organising.

A big thank you to Richard and all of the team at Cirencester and to committee members Joe and Lucy for their efforts in ensuring success on the day.

Congratulations to two of our members who have been awarded sponsored attendance to BTME 2015. The section place was awarded to Tom Wright from Long Ashton GC and the region place went to Elliott Nichols from Cotswold Hills GC.

### Thanks to Sponsors

#### SOUTH WEST

Many thanks to our South West Section 2014 Patrons: Sportsmark, Greensman, Irritech, Headland Amenity, Countrywide, Farmura, Ecosolve, T H White and Indigrow for their invaluable support of South West Section events and training.

### Welcome New Members

Joshua Gunn, Greenkeeper, Lee-on-the-Solent Golf Club, Gary Cole, Assistant Greenkeeper, Romsey Golf Club.

### New International Members - USA

Erin Stevens, CGCS International Greenkeeper, Emerald Dunes Club, Kaye Pierson, International Greenkeeper, Pinchurst Resort.

## Midland

Contact your Section correspondent with news, events or anything else for Around the green...



**BB&O** - The Stick  
bboscribe@gmail.com  
or Matt Nutter  
bbosecretary@gmail.com



**MID ANGLIA**  
Darren Mugford  
d.mugford@rigbytaylor.com



**MIDLAND**  
Dave Collins  
greendave2004@hotmail.co.uk



**EAST OF ENGLAND**  
Steve Beverly  
steveimingham@aol.com



**EAST MIDLAND**  
Matt Gilks  
gilksmatt@farol.co.uk

### Events Coming Up

#### EAST MIDLAND

Don't forget the Midland Seminar in February!

#### MIDLAND

There are lots of events this year, more details coming up, check the website [www.biggamidlandsection.co.uk](http://www.biggamidlandsection.co.uk) or on Facebook.

### News

#### EAST MIDLAND

East Midlands has seen some changes, with a new committee and lots planned for 2015. The new committee is Nigel Colley (Rothley Park GC) as Chairman, Andy Marsh (Charnwood) Vice Chair. Andy have you put your shorts away yet? Asa English is Secretary, Chris Weir (Market Harborough) Education, Martin Hickling (Rothley) is Treasurer, Chris Taylor (Willersley) also Education and Matt Gilks (Farol) trade rep, I will also be writing the notes so any stories please contact me [gilksmatt@farol.co.uk](mailto:gilksmatt@farol.co.uk).

The section is sad to lose Ash Robinson from Market Harborough who is heading to a private school after 10 years service in the section he will be missed.

From the Autumn event at Coxmoor winners on the day were Martin Hicking, Jordon Baker and Geoff Fenn. Congratulations, it would be great to see some more faces in 2015.

The East Mids Facebook page is going well and all are invited to send images and info over. We would also like to thank Carl Chamberlin and Simon Banks who are committed to help supporting the section going forward.

BTME is fast approaching and we look forward to seeing you all there at some point. Hope you and your families have a great Christmas and New Year.

#### MIDLAND

A fab day was had at Blackwell for the Christmas pairs competition kindly sponsored by Working Turf, a lovely sunny day on a great course in fabulous condition. Congratulations to Rhys Thomas and his team and a special thanks to all our sponsors. Results: 1 J Chamberlain & R Thomas 2 T Cheese & H Middlebrook 3 E Stant & M Stevens 4 G Hugget & D Fellows. Nearest the pin: 2nd D Fellows, 6th E Stant, 9th J Chamberlain, 13th J Moverley, 18th H Brooke. For photos visit [www.facebook.com/BiggaMidlandSection](http://www.facebook.com/BiggaMidlandSection)

After over a decade reporting the Section News, Sean McDade has taken well deserved retirement. Many will be left with fond memories of his eccentric news items over the years, and for that we are grateful. Thanks Sean, it was memorable!

The Section wish Keith Swan a happy retirement from his role as Deputy Course Manager at Penn Golf Club. Keith joined the greenkeeping team while a member of the Club in the latter stages of his working life and proved invaluable, showing great commitment to the Club. Enjoy retirement Keith!

#### BB&O

The Turkey Trot was held at Frilford Heath GC in December. The course was in fantastic condition, thank you to the team at Frilford who looked after everyone superbly. In particular our thanks go to Sid Arrowsmith and his team for a truly great course. Results: 1 Ted's Boyz captained by Ted Lewis, 2nd And the Winners Are led by Simon Banks, 3rd 4 Skins led by Tony May.

The AGM was held before the meal with the board re-elected. Matt Nutter will continue as secretary until a replacement is found. Congratulations to Matt who becomes the Chairman for the Midland Region. It was also great to see Regional Administrator Roger Butler. Hope everyone had a good Christmas and look forward to seeing you all at this year's events.

#### MID ANGLIA

On 10 December we held our Turkey Trot at Ashridge GC where 92 golfers attended. Thanks to Ashridge GC for hosting for the superb food and hospitality. A massive thank you goes to James Camfield and his team for providing everyone with a wonderfully presented course. Results: 1 V Holt, R Holt, S Cherry and S Ketch with a net score of 57 and a handicap of 2. 2 L Thorpe, D Thompson, D Griffiths, R Marsden 58.8. 3 S Gregory, G James, A Cussial, S Hall 59.1. Nearest the Pin on the 8th - R Moggeridge and on the 11th hole was J Gubb.

#### EAST OF ENGLAND

Unfortunately due to the 'weather bomb' that exploded over us we had to cancel the Christmas Texas scramble at Cleethorpes GC. It's always difficult to plan for a competition this time of year as who knows what the weather will bring us and how it can change so dramatically in a day or so.

Rob had managed to get the course looking good for us until the weather turned. We are looking into rearranging it early next year, details TBC.





Myself and Bruce had the privilege of being invited out with the National Board after their meeting at Woodhall Spa recently.

It was good to get an insight into how the board operates and some of the upcoming things that are going to be introduced in the next year or so.

It was also a good chance to get some ideas across directly from our section as well as the usual tales of woe from our courses from this time of year.

Rob Welford (Cleethorpes GC Course Manager) is the regional board member so our section has a direct link to the Board should anyone wish for him to raise any issues.

It was also good to meet Roger Butler, our new regional administrator. On behalf of the committee I would like to welcome him and look forward to a long and prosperous relationship with him.

Best wishes to Ash Rycroft who is leaving Cleethorpes GC at the end of the year to take up a position at Wentworth. Ash has spent two years as an apprentice with Rob and will be a great addition to the team down there.

Hopefully as many section members as possible will be visiting BTME. A section meeting will be held to finalise plans for the year. If anyone has any ideas for education opportunities, seminar days or golf days or would like to volunteer for the committee please get in touch.

## Thanks to Sponsors

### MIDLAND

Thanks to Working Turf for all your turf care need including laser leveling, and for sponsoring the Blackwell Christmas Pairs. Contact them at [www.workingturf.co.uk](http://www.workingturf.co.uk) or call them on 01733 241510. Also thanks to all our regular sponsors for raffle prizes and nearest the pin.

### BB&O

Turkey Trot was kindly sponsored by T H Whites & Ransomes Jacobsen. Without the continued support of our sponsors the golf days would not happen, so a big thank you to them.

### MID ANGLIA

Thanks to all the reps who continue to support the events and for their raffle prize donations.

We would like to offer special thanks to Mark House from Ernest Doe for keeping everybody refreshed at the halfway house.

A massive thanks to our Sponsors of the section for 2014: ALS, Headland Amenity, Avoncrop Amenity, Farmura, Rigby Taylor Ltd, Amenity Technology, Tuckwells Machinery.

## Welcome New Members

Daniel McClaren, Greenkeeper, Ladbrook Park Golf Club, Thomas Shortley, Greenkeeper, Ladbrook Park Golf Club, Damien Wiskin, Head Groundsman, North Oxford Golf Club, Ellis Wellstead, Assistant Greenkeeper, Oxford Golf Club Ltd, Jacob Smith, Assistant Greenkeeper, Alfreton Golf Club, Craig Potts, Assistant Greenkeeper, Coventry Hearsall Golf Club, Chris Hodgkinson, Course Manager, Carus Green Ltd, John Parry, Greenkeeper, Wrexham Golf Club, Christopher Moores, Greenkeeper, Macclesfield Golf Club, Richard Stanwix, Greenkeeper, Bamburgh Castle Golf Club, Chris Jones, Greenkeeper, St Annes Old Links Golf Club, Myles Davies, Assistant Greenkeeper, Heswall Golf Club, Josh Crackett, Assistant Greenkeeper, Blackwell Grange Golf Club.



Contact your Section correspondent with news, events or anything else for Around the green...



**SURREY**  
Mark Day  
mark@daylinks.co.uk



**KENT**  
Rob Holland  
premiorgolf2012@hotmail.co.uk



**SUSSEX**  
Chris Humphrey  
chris@collier-turf-care.co.uk



**EAST ANGLIA**  
Mick Lathrope  
m.l.lathrope@ntlworld.com



**ESSEX**  
Arnold Phipps-Jones  
essexbigga@talktalk.net



**LONDON**  
John Wells  
j.wells1@sky.com

## Events Coming Up

### LONDON

Next year's courses in spring and summer will be at Highgate and Bush Hill Park, further details TBC.

Education for 2015: Three short sessions which are free and include tea/coffee and a snack are all at Mill Hill GC 12.30 until 2pm. More details: 7 January 'Rules of Golf That Affect the Greenkeeper' by Louis Matamara Herts County Golf Union Secretary [a must for younger staff!] 4 February Irrigation/the many years of running an Irrigation company' by Stuart Sanders of SJS Irrigation.

25 February 'Chemicals/getting the best performance from them' John Beck and Mike Williamson of Sherriff Amenity.

The Big day at Oakland College Smallford is on 17 February with 4 great speakers covering the V's first with by John Ross MG on Vibration and noise at work. Second is Steve Chappell on Volunteering and the Ryder Cup, third is Laurence Pithie MG on Vision, and last but not least the Stella Rixon from STRI on Variation changes in GK in the last decade.

18 March, Billy MacMillan will be demonstrating the Dry Jet sand injection system at Muswell Hill GC.

Christmas golf day 8 December 2015 Moor Park.

Don't forget BTME - a great time to meet fellow greenkeepers, advance your knowledge and keep up to date with new products.

### KENT

2015 Events:  
Royal St. Georges Golf Club - 10 March  
Faversham Golf Club - 14 May  
Walmer & Kingsdown GC - 19 September  
Redlibbets Golf Club - 26 November

### SURREY

Merrist Wood College seminar has been organised prior to BTME. This event is free and a chance to earn CPD credits. Details on the new Surrey website. If any club can host a golf day, Scott Roberts will be keen to hear from you.

## News

### LONDON

Tuesday 9 December saw the section play its Xmas tournament at Essendon Golf and Country Club, and we were all treated to a golf course

in great condition and a wonderful Christmas dinner afterwards. A big thank you to Craig Gibson [Course Manager] and Paul Densham [Director of Golf] for making the day so special. The winning team were Rob Catlin, Matt Corbould, Mick Catlin and Thro, on 57.9. Close behind was Craig Gibson, James Boyle, Matthew Cohen and myself on 58.8 and in third Stuart Playle, Andy Dormer, Michael Elderfield and Keir Grimmer on 60.8.

### EAST ANGLIA

Once again the Thorpeness Turkey Trot was a great day out, due mainly to the tireless efforts of Ian Willett. 28 teams played on a top rate course - well done mate. Pretty close results: 1 The Ice Age 4 Peter Howard, Brian Lindores, Nick Staff and Peter Cooney on count back 58pts. 2 Rushmere Hackers Michael Buck, Terry Mills, Paul Smythe and David Driver 58. 3 Willetts Wonders Chris Guy, Mark Barber, Laurence Staff and Geoff Barber 58.2. 4 Virley's Viscounts Mike Virley, Ian Palfey, Danny Barton and Russell Rayner 58.3.

Nearest the Pin: 2nd Graham Shillings, 7th Ed Pickford, 10th Edward Clarkson, 16th Nick Chase. Nearest the Pin in Two: Laurence Staff!

Then came the AGM. I think we finally agreed to give £500 to charity from the kitty. We thanked all the clubs for accommodating us this year, and thanked all the trade for their continued support, which is probably our life line.

We need a few more venues for next year. So far we have Newmarket Links, Dunston Hall and Aldeburgh. The prices next year for these events will be £25, except the Turkey Trot which will be £30.

All existing officers were re-elected. The President's prize went to a young man, Kevin Leech, who Colin saw very ill in hospital. He is a young greenkeeper with a young family. We wish him a speedy recovery.

### SUSSEX

28 November saw the Turkey Trot held at Worthing Golf Club. Many thanks to George Barr for all his work in arranging this and also to all his team for presenting such a fine course on the day. Pete Smith, Ryan Hyder, John Ross and James Briggs won with 62 pts. Beating the teams from Mitchells and Pyecombe Golf Club into 2nd and 3rd respectively both with 61pts.

### KENT

Nearly 50 of Kent's finest gathered at Redlibbets. Despite incessant rain for the six weeks prior to the event Kev, Mark and the Redlibbets crew had managed to present the course in superb condition. Results: 1 Richard Larkin 41pts (wins Everris Shield), 2 Chris Witchlow 40, 3 Dave Bass 39. Longest Drive: Matt Daniels. Nearest pins Dan McGrath and Michael Roberts. Trade: Chris Boakes.

Thank you to everyone for your continuing support of me and Kev in our roles of organisers of section events. A big thank you to all our trade members who have supported so generously over the past year. It is through their commitment that our section continues to exist and is able to host subsidised events and educational possibilities.

### SURREY

Congratulations to Graeme Roberts who has earned a place on the BIGGA Delegation to America.

For this year if you are unfortunate enough to walk the longest walk or come last in any of the golf days, you will be expected to sharpen your 7 iron and represent Surrey in the Tri section event between Essex, Kent and Surrey later in the year.

Surrey Facebook is up and running, check it out! After

a good financial end to the year, the section has donated £1000 from funds to the Greenkeepers Benevolent Fund.

### ESSEX

The AGM and Christmas Texas Scramble were held at Orsett Golf Club with 14 four man teams. Results: 1 Boyce Hill Golf Club 60.2, 2 Banks Amenity 60.9, 3 Frinton Golf Club 61.9. Nearest Pin Wayne Wilson and Steve Crosdale. Greenkeeper Golfer of the Year - Ross Sturridge, Boyce Hill Golf Club. Trade Golfer of the Year - Steve Bush, Ernest Doe & Sons

Our thanks to Perry Lowe and his greenkeeping team, the course was in great order. All the players were very grateful for the hospitality shown by the staff of Orsett Golf Club. Our thanks also go to the Captain and members.

The Committee members elected for the next year were: President - Martin Forrester, Chairman - Ian Wood, Secretary - Arnold Phipps-Jones, Treasurer - Tom Smith, Competitions - Antony Kirwan, Sponsors Representative - Richard Freeman (Toro), two positions are still available - Education and Committee Member.

## Thanks to Sponsors

### EAST ANGLIA

Thanks once again to our very generous trade members who include CMW, Toro, Ransomes Jacobsen, Aitkens, Rigby Taylor, Ernest Doe, Bartram Mowers, Tacit, SGI, Headland, Sherriff Amenity.

### SUSSEX

Thanks to all sponsors of the Turkey Trot, particularly Ernest Doe and Lister Wilder. A big thanks to all the sponsors of the section for their continued support throughout the year.

### KENT

Many thanks to Lister Wilder who provided the refreshment buggy at Redlibbets.

## Welcome New Members

Wendy Moffatt, Affiliate, Merrist Wood College, Stephen Ramsay, Affiliate, Root2Shoot Greenkeeping Services Ltd, Justin Clark, Deputy Head Greenkeeper, West Middlesex Golf Club, Heath Taylor, Greenkeeper, Minchinhampton Golf Club, Robert Durrant, Greenkeeper, Enfield Golf Club, Daryl Tedstone, Greenkeeper, Limsfield Chart Golf Club, Anthony Sunney, Greenkeeper, West Middlesex Golf Club, Brian Lisle, Greenkeeper, Stonelees Golf Centre, Michael Harris, Greenkeeper, Royal Mid-Surrey Golf Club, Innes Blight, Greenkeeper, Royal Mid-Surrey Golf Club, Christopher Hoar, Greenkeeper, Guildford Golf Club, Donny Reece, Groundsman, Ascot Racecourse, Scott Lea, Groundsman, Fulham Football Club, Reon Sanford, Head Groundsman, Ascot Racecourse, Joe Curtis, Assistant Greenkeeper, Knole Park Golf Club, Aaron Taylor, Assistant Greenkeeper, Park Wood Golf Club, Taylor Allbut, Assistant Greenkeeper, Croham Hurst Golf Club, Graeme Jones, Assistant Greenkeeper, Muswell Hill Golf Club, Anthony Dineen, Assistant Greenkeeper, Top Meadow Golf Club, Paul Kenward, Assistant Greenkeeper, Cobtree Manor Park Golf Club, Greg Mewett, Assistant Greenkeeper, Cobtree Manor Park Golf Club, Stuart Reece-Ford, Assistant Greenkeeper, Maldon Golf Club, Harry Hart, Assistant Greenkeeper, Lee-on-the-Solent Golf Club, Aaron Davies, Assistant Greenkeeper, Wisley (The) Golf Club Plc



Please send your news and photos in to your section correspondent or Steve Castle [steve.castle@bigga.co.uk](mailto:steve.castle@bigga.co.uk) by the 10th of the month



## Northern

Contact your Section correspondent with news, events or anything else for Around the green...



<b>NORTH EAST</b> Glen Baxter glen.baxter@rigbytaylor.com	<b>NORTH WEST</b> Tom Wood & Tim Johnson tomwoodtmw@gmail.com/tim_j87@hotmail.com	<b>CLEVELAND</b> Anthony McGeough amcgeough@aol.com	<b>NORTHERN</b> Andy Slingsby andy.slingsby98@googlemail.com	<b>SHEFFIELD</b> Ian Whitehead admin@hillsboroughgolfclub.co.uk	<b>NORTH WALES</b> Pete Maybury petemayb66@aol.com
---	---	---	--	---	--

### Events Coming Up

#### CLEVELAND

11 March 2015 at Chester le Street Golf Club – FREE Seminars and workshops to be confirmed.

#### NORTH WEST

BTME 2015 – don't forget to pre-register to avoid queues!

#### NORTH WALES

We are again this year running a coach to BTME on Thursday 22 January, there may still be seats available please contact me or Jeremy Hughes as soon as possible if you are interested.

Seminar planned for 18 February at the Deeside campus of Coleg Cambria, speakers and subjects to be announced.

#### SHEFFIELD

The AGM will be on Wednesday 18 February at Grange Park Golf Club at 6.30pm. There seems to be a lack of interest within the section so if anyone has got any ideas or anything you want bring up please come along.

### News

#### NORTH EAST

Winter bring a bottle competition held at the Dunstanburgh Castle links, results: 1 G Baxter, 2 M Latham, 3 J Friar. Congratulations to Simon Pearce from Alnwick GC on his monumental score of 3 points! Thanks to Stuart Imeson and his team for the superb condition of the golf course, and to Dunstanburgh GC for their hospitality.

Massive congratulations to Stuart Imeson on being awarded Young Greenkeeper of the year at the IOG/BIGGA awards. This comes after Dunstanburgh won the National Club Golfer Greenkeeping team of the year. Great achievement for the young team of Stuart, James Thorpe and Dan Wilkin!

Congratulations also to Michael Gunn who has recently achieved 25 years service at Tyneside GC, well done Michael! The North East section still has vacancies for committee members, anyone interested should email Simon on spolver@hotmail.co.uk

#### CLEVELAND

The AGM was held on 1 December and was attended by 18; with a Section of just 84, this isn't a bad take up. One of the main talking points was improving communication through the Section on to Regional and National boards. So if you have any concerns or matters of interest from

anything golf to education, get in touch and we will make sure it gets put forward. Within the Section we have two very able and enthusiastic board members: Martin Woods - martinwoods@gmail.com 07766 884405 & Pete Newton - pete.newton@hotmail.co.uk 07855 377989

There have been lots of things happening starting with a Toro training day held at Mowden Park arena in Darlington. The seminar covered after cut appearance and a sprayer refresher. This was a quality day organised by Lloyds Ltd.

Next was a free seminar held at Scarthingwell Golf Club, which covered an update of the BIGGA constitution, a discussion on dealing with committees and STRI providing a talk on managing soils for surface performance. This event was well represented by the Cleveland Section and it was good to see everyone there.

Free events are popping up quite regularly - valuable benefits of being a member of BIGGA. In the past I questioned what BIGGA did for me other than provide me with a magazine every month. It wasn't until I started to get more involved that I realised what the Association actually did. It provides chances to network socially and professionally, improves your working knowledge through regular free seminars, not to mention the BTME and Continue to Learn programmes. Sorry if that sounds like a bit of a rant but I suppose it is!

Competition highlight of 2014 was the first ever Section victory in the Northern Region Whitemoss Eco Inter Section Competition, held on a fresh September morning at Northumberland Golf Club. Well done to M Woods, P Hargreaves, D Cuthbertson and B Walker!

The Christmas Golf Day was held at Cleveland GC. It was a cold but enjoyable day. The format was stableford, full handicap with the best two scores counting. Results: 1 A McGeough, A Whitby, I Leversuch 73pts. 2 L Hunt, D Thompson, P Legg 67, 3 S Waters, I Pemberton, M Woods 67, 4 A Reed, T Maddison, A Russell 64, 5 J Warlow, B Walker, N Blesic 60, 6 R Douglas, B McGratten 46. Longest drive R Douglas. Nearest the pin M Woods

#### NORTH WEST

Congratulations to Mark Hillaby, Course Manager at Macclesfield GC for winning the Bert Cross Trophy Christmas Competition at The Wilmslow GC. Secondly congratulations to Warren Bevan for becoming Course Manager at Bearwood Lakes, the committee thanks him for his hard work and support over the years.

Finally congratulations to Edward Ainsworth, Course Manager at Avro GC, for winning the Greenkeeping Achievement Of The Year Award at the IOG/BIGGA Awards. The AGM took place on November 11 at Wilmslow GC.



The committee is: Chairman - Scott Reeves (Leyland GC), Vice Chairmen - Chris Gibson (Dunham Forest GC), John McLoughlin (Grange Park GC), Secretary - Chris Sheehan (West Derby GC), Treasurer - Billy Merritt (DCT Leisure), Membership Officer - Nick Gray (Bathgate Amenity), Golf Organiser - David Weir (Rigby Taylor), Education Officer - Gwynn Davies (The Mere), GI Correspondents and Communications Officers - Tom Wood (Sportsturf Tutor Myerscough College) & Tim Johnson (Wilmslow GC).

#### NORTH WALES

Thanks to Wallasey GC for their hospitality in allowing us to hold our Christmas event there, also thanks go to Chris Peddie and the lads for an exceptional course. Results: 1 Dave Austin, James Hampson, Ritchie Walker and Andrew Cornes 89pts, 2 Rich Shields, John Carmichael, Harry Kemp and Jim O'Connor 87, 3 Martin Lee, John Corbitt, Nick Roberts and Mike Hughes 86, 4 Phil Watson, Chris Peddie, Dan Fitzgerald, Dan Gale 86, 5 Ian Murphy, Alan Carson, Zach Parry and Dave Hird 85.

We also ran a course walk on the same day and a big thank you has to go to Lee and Jason for their informative insights.

The AGM was held at Wallasey, your committee now looks like this: President Terry Adamson, Chairman/Treasurer Carl Crocher, Golf coordinator/Board member, Jeremy Hughes, Magazine notes/Text Alerts Pete Maybury, Education/Seminars Rhys Butler and Paul Lowe, Membership Neil Oxton, Handicaps Andrew Cornes, Social media Simon Ashford, Committee secretary David Wilkinson, Trade rep John Mooney. Please feel free to contact us with any section queries we are here to help.

Congratulations to Miles Todd for getting a place on the BIGGA Bernhard Delegation, Rhys and Paul will be smelling a seminar talk out of that visit I'm sure.

#### SHEFFIELD

Christmas comp at Bondhay GC Results: 1P Hobson 36 pts (countback), 2nd L Greveson 36, 3 S Piggot 34. Trade prize P Fell. Nearest pins were M Robinson, A Whittingham, P Hobson, L Greveson.

Congratulations to Michael Burgin from Normanby Hill GC who has been selected for the John Deere TPC Sawgrass Support Team

### Thanks to Sponsors

#### CLEVELAND

Prizes for Christmas golf day provided by Greenlay. Raffle prizes supplied by Everris, Tacit, ERH and Amtech and the money raised was donated to the BIGGA Greenkeepers Benevolent Fund.

#### NORTH WEST

The Section would like to thank all sponsors for 2014. Thank you to Bathgate Amenity for sponsoring the Prizes for the Bert Cross Trophy competition.

#### NORTH WALES

We would like to thank the following companies for sponsoring the coming year: Whitemoss Amenity, Symbio, Rigby Taylor, Germinal Seeds, Bathgate silica sand, MG Turfcare, Farmura Environmental, BMS Golf Luton, Campey Turfcare, Sherriff Amenity, Cheshire Turf Machinery, Turner Groundcare, David Williams Golf Design, Allturf and Osprey Water Management.

### Welcome New Member

Maurice Cotter, Assistant Greenkeeper, Carus Green Ltd.



The British Rootzone and Top Dressing Manufacturers Association (BRTMA) is the trade body representing manufacturers of Rootzones and/or Top Dressings, all of which must conform to a standard approved by the Association's appointed Testing House i.e. USGA or UK guidelines.

BRTMA is made up of the following members:

- Baileys of Norfolk Ltd
- Banks Amenity Products Ltd
- Bathgate Silica Sand Ltd
- Boughton Loam Ltd
- Bourne Amenity Ltd
- Garside Sands
- Mansfield Sand Co Ltd
- Roffey Brothers Ltd
- Sibelco UK/Rufford
- Tarmac Topsport

w: [www.brtma.com](http://www.brtma.com)  
e: [brtma@sportsandplay.com](mailto:brtma@sportsandplay.com)





## Scotland

Contact your Section correspondent with news, events or anything else for Around the Green...



**CENTRAL**  
Gordon Moir  
Gordon.moir@standrews.org.uk

**SOUTH WEST OF SCOTLAND**  
Amanda Dorans & Ian Smith  
amanda.dorans@lochlomond.com / iansmithgm@hotmail.co.uk

**EAST**  
Scott Corrigan  
scottcorrigan4@aol.com

**NORTH**  
Robert Patterson  
grassman351@aol.com

**WEST**  
Stuart Taylor  
stuart.taylor@glasgowgolfclub.com

## Events Coming Up

### WEST

Scottish conference at Dunfermline on 3 March 2015, as usual a fine collection of speakers will be there and definitely worth a visit.

### CENTRAL

The Section are looking at holding an evening seminar in early to mid-February, somewhere in the Angus area perhaps where members could invite other greenkeepers along from that area who aren't members. More information will be emailed out and appear on our Facebook page as soon as we have things in place.

## News

### WEST

Happy New year to all and best wishes for the coming season, here's hoping it will be as good as the last 2 years or would that be tempting fate? At this time we can reflect on what has happened through the year and the memories, the passing of friends and colleagues, the celebrations of weddings and births or achievements.

On that note I would like to mention the celebration of Nairn Brown Company having been in the business for 50 years last August, a very reputable company supplying superb service with a smile at all times, congratulations to them and I hope 2015 is slightly less traumatic.

I would also like to mention Charlie Goodall of Balmore GC who sadly is no longer a member but was for a very long time a good supporter of the section and events. He has been unwell recently and we do wish he recovers from his illness soon.

The annual night out for the west section started off at a bar near Charing Cross moving onto Mister Sings restaurant with 34 people turning up, everybody seemed to enjoy themselves. A few pubs were visited after that and some merriment experienced, well done to Gerry Bruen and Alan Jack for helping to organise a good night.

Best wishes for the coming season and nice to meet up with Alan Finlay at Partick Thistle and Jim Caldwell of Sandyhills, I'm glad things are going well Jim.

The Patrons lunch was held at Stirling GC on 11 December which was very well attended and saw Andrew Orr from

Drumpellier GC receive the west section award. Thanks go to John Young for organising the event, to Stirling GC and also Alistair Connell for his Commonwealth Games seminar. Please contact me if you have any news on stuart.taylor@glasgowgolfclub.com, 01419 425554 or 07790 823914, alternatively contact Gerry Bruen on gerrybruen1@btinternet.com especially if you have not forwarded your current e-mail address, or you could visit the blog at <http://westsectionbigga.blogspot.co.uk/>

### SOUTH WEST OF SCOTLAND

After much deliberation and discussion with members, it was agreed to rename the section South West Scotland. This was unanimously agreed at the AGM in October and it is hoped that this will lead to greater engagement with members throughout the region including Dumfries, Galloway and the Isle of Arran.

Thanks to Euan Grant for his support of the Association in the section and region during his time at Turnberry. Euan had been elected as the section's chairman but has decided to take on a new role with the grow-in of JCB's planned golf course in Staffordshire. We wish him every success.

Frank Clarkson, Course Superintendent at Dundonald Links, has agreed to become Chairman of the section with immediate effect. Frank is looking forward to the challenge and is hoping to build on the work started by Jim Paton and Euan. James Parker from Ranfurly Castle has taken on the role of Education Officer for the section.

The South West Section took part in a course visit to Loch Lomond recently. We were treated to an excellent presentation by David Cole MG, Director of Course and Estate Management, before Dave and Peter Haggarty treated the members to a walk around the course focusing on the continuing drainage improvements. We would like to thank Dave and his team for their fantastic hospitality.

A new Facebook has been created for the section titled BIGGA South West Scotland and we hope that our members contribute.

### CENTRAL

Happy New Year to all our members and the Patrons who supported us through 2014.

Our best wishes to Allan Patterson as he leaves The Castle Course to take up his new position as Courses and Estates Manager at Trump Turnberry after close on 10 years working for St Andrews Links. Allan has been a regular attendee at many of the Section events over the years and his contribution will be missed.

## Thanks to Patrons

### SOUTH WEST OF SCOTLAND

We would like to thank David Carson from Rigby Taylor and Graeme King from Hugh King & Co for providing presentations at our AGM.

## Welcome New Members

Rich Mackay, Affiliate Member, Stuart Tait, Greenkeeper, Renaissance Club, Scott Eddie, Greenkeeper, Scotsraig Golf Club, Robert Mathieson, Head Greenkeeper, Machrihanish Golf Club, Brian Scott, Head Greenkeeper, Blairgowrie Golf Club, Wayne Bendall, Student, SRUC (Elmwood), John McCaughley, Assistant Greenkeeper, Drumpellier Golf Club.

Please send your news and photos in to your section correspondent or Steve Castle [steve.castle@bigga.co.uk](mailto:steve.castle@bigga.co.uk) by the 10th of the month



## Used Machinery

- Professional Golf Equipment
- Fairway mowers, greens and tees mowers, Gator utility vehicles etc.
- Walk behind greens mowers

Visit our website to see our regularly updated used machinery listings at: [www.farol.co.uk/groundcare](http://www.farol.co.uk/groundcare)



Whether you're looking after the **back garden**, or the **'back nine'**, we have a machine to suit your needs.

Milton Common, Thame, Oxfordshire  
Hinckley, Leicestershire  
Shefford, Hungerford, Berkshire  
Midhurst, West Sussex  
Byfield, Daventry, Northamptonshire

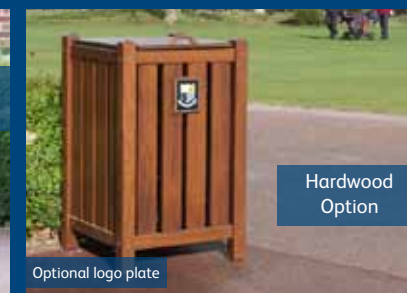
01844 278843  
01455 638960  
01488 648552  
01730 819981  
01327 264844

FarolLtd @FarolLtd  
e-mail: [sales@farol.co.uk](mailto:sales@farol.co.uk)  
[www.farol.co.uk](http://www.farol.co.uk)

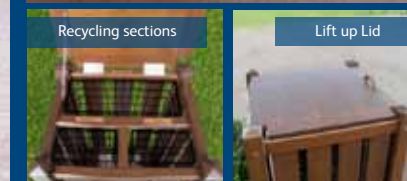
## Drive towards recycling



EaglePlex Bin with optional ball washer and tee plate



Hardwood Option



Recycling sections



Lift up Lid

## Point of Play Tee Markers from £3.95



EaglePlex Marker



Tee Caddy Marker



Upright Marker



Octagonal Marker

Manufactured in the UK at the Eagle Plant

Hardwood from £225

EaglePlex from £179

(+ Delivery and VAT)

CONTACT EAGLE FOR MORE INFORMATION

t + 44 (0)1883 344244 e [info@eagle.uk.com](mailto:info@eagle.uk.com) w [www.eagle.uk.com](http://www.eagle.uk.com)





# Greenkeepers Training Committee

Anthony Stockwell, Sports Turf Assessor at Hadlow College, on greenkeeping apprenticeship reform and how golf club employers' and student greenkeepers' needs are met

**A former colleague once said to me "If you're not progressing forwards, you're going backwards". He was referring to ongoing personal development in the workplace. Reflecting on this quote, it is indeed easy to apply this to either the individual, whatever that individual's work situation may be, or to organisations and their response to the market, whatever that market may be.**

The definition of moving forward on the whole means participating in Continuing Professional Development activities or growth within your job role with increased responsibilities.

CPD is the foundation to assist this movement and elevating an individual's career.

I often think people are participating in CPD without realising that they are doing so, even by reading this magazine's educational section, you, as the reader are participating in a form of CPD and that should be encouraged.

Applying this quote to the recent work of the GTC and the Trailblazer movement, it is very positive to hear such positive moves forward in the current situation with changes to the qualifications.

The new Levels 2, 3 and 4 standards that are being developed will take education and training to a whole new level and ensure the future of greenkeeping apprenticeships is strengthened.

These are very exciting times ahead for those within the greenkeeping industry, especially those considering employing apprentices or looking to invest in their staff. The continued work of the GTC, working in collaboration with BIGGA, England Golf and City and Guilds is great to hear and the significance of the government's Business Innovation and Skills accreditation is significant and will have a positive impact on the future of our industry.

In terms of training apprentices, the role of the golf course manager is evolving and moving forward



The GTC is funded by:



## Contact Details

David F. Golding  
GTC Education Director  
and Standards Director,  
Greenkeeper Training

01347 838640  
david@the-gtc.co.uk

GTC  
Aldwark Manor  
Near Alne  
York  
YO61 1UF

www.the-gtc.co.uk  
www.greenkeepertraining.com



You can follow the GTC on  
Twitter @TheOfficialGTC

with the development of the new standards.

There will be an improved opportunity for turf managers to be more involved and engaged in the learning process. This will strengthen and triangulate the learners' experience between the training provider, employer and apprentice.

Hadlow College continues to move forward and pave the way for training greenkeepers and those within the turf industry. This winter, in association with the BIGGA Kent-section, Hadlow is offering free evening classes.

The seminars are being staged on four dates through the winter on a range of current topics. Full details of the dates and speakers can be found on the BIGGA and GTC websites under the events section.

Hadlow has invited external speakers who are specialists in their own particular field within our industry. There is an interesting range of greenkeeper speakers intertwined with other skilled non-greenkeeping members of the turf industry profession.

Without the commitment and expertise of these individuals these seminars would not be possible. I would like to extend my thanks and gratitude to the guest speakers who are supporting Hadlow and without whom these seminars would not be possible.

Special thanks must go to Dr. Su Hodgson, Darren Cuddihy, Jack Sims, Adrian Handbury, Richard Japes, James Bledge, John Ross and Graeme Roberts. Hadlow College has also had enquires for the 2015/16 winter so the future is looking bright too!

In the November edition of Greenkeeper International, a list of conferences and speakers was announced and we at Hadlow will continue to work with BIGGA's Kent Section to ensure seminars and workshops are available on specialist subjects to compliment the more formal courses, qualifications and apprenticeships offered by the college.

My last pause for thought goes back to the initial quote "If you're not progressing forwards, you're going backwards". I would encourage readers to reflect upon how you can move forward at a steady and accelerated pace if desired.

Many people wait for opportunities to happen whilst others make things happen through planning, identifying goals and acting upon plans. It's a willingness to improve that drives us forward.

Sometimes people wait for opportunities to fall their way. However some doors will open only if they are pushed.

Anthony.Stockwell@hadlow.ac.uk, Tel: 01732 850551

THE BRITISH AND INTERNATIONAL GOLF GREENKEEPERS ASSOCIATION

PRESENTS

THE BIGGEST EVER EDUCATION OFFERING AT CONTINUE TO LEARN



OVER 100 EXHIBITORS FROM ACROSS THE INDUSTRY



PLUS THE TURF MANAGERS CONFERENCE, SPECIAL GUESTS AND MORE

## BIGGA TURF MANAGEMENT EXHIBITION

BIGGA PRESENTS BTME 2015 INCORPORATING CONTINUE TO LEARN

AT THE HARROGATE INTERNATIONAL CENTRE

CONTINUE TO LEARN 18-21 JANUARY 2015

TURF MANAGERS CONFERENCE 19 JANUARY 2015

BTME 20-22 JANUARY 2015

Visit [btme.org.uk](http://btme.org.uk) and click Register Now



Visit [btme.org.uk](http://btme.org.uk) and click Register Now



# BUYERS' GUIDE

To advertise contact **James** on **01347 833 832**  
or email [james@bigga.co.uk](mailto:james@bigga.co.uk)

CATEGORIES... **AERATION / AGRONOMY / ALL WEATHER SURFACES / ANTI SLIP / BUNKER / CONSTRUCTION / CLOTHING FOOTWEAR / COMPACT TRACTORS / CONSTRUCTION / DRAINAGE / HEDGES/TREES / IRRIGATION / IRRIGATION CONSULTANTS / LAKE CONSTRUCTION LINERS / MACHINERY WANTED / RUBBER CRUMB / SOIL FOOD WEB / TOP DRESSING / TREE MOVING / TREE CLEARANCE / TURF USED MACHINERY / VERTIDRAINING / WASTE / WASHWATER TREATMENT**

## ARTIFICIAL GRASS PATHWAYS

As the winter weather is under way, preparations to ensure that courses will be playable right through till Spring are getting underway. It is important not to neglect pathways especially if money is tight. Artificial Grass is a cost effective solution despite common misconceptions.

Artificial grass could benefit your club, bring in extra revenue and increase your profits.

### 1. Muddy Paths Put Players off

A lot of work is carried out through the year to ensure that the course is in tiptop condition. However, the golfer still has to get both to the course and from one hole to another. Cheap, quick fixes for these paths are often used. In the long run these aren't cost effective and players are put off on many occasions. Would you want to walk across a mud bath?

### 2. Cost Effective Solution

Artificial grass doesn't cost as much as people presume. It's a bit like buying a cheap car. It may cost less initially, but it is expensive to maintain and has to be replaced much sooner. If a more expensive car had been purchased it would have cost less over 20 years and would have freed up time considerably, along with a lot less stress. Artificial Grass may appear expensive at the outset, but there is minimal maintenance required and it should last up to 20 years once installed. The green staff now have more time to concentrate on the course. All in all giving long term cost benefits.

### 3. Easy Installation

Artificial Grass is easy to install and can be carried out by the green staff themselves. As long as a free draining base is in place the artificial grass can simply be laid directly over the compacted soil or stone sub-base. Both sand-filled and

non-sand filled options are available to suit different areas of the course. If fixed securely this will remain in place for years to come. The installation is very similar to that of natural turf.

### 4. Low Maintenance

Once Artificial Grass has been installed there is very little maintenance required. Simply ensure that leaves are brushed off to prevent moss and keep the grass looking green. However, if left unattended and moss should appear, it is easily removed with various moss killers without damaging the surface. You now have a mud free pathway all year round.

### 5. Versatile & Hardwearing

A properly installed artificial grass pathway is substantial enough for the golf course machinery to drive over - the same path can be used for tractors, mowers, buggies, trolleys, golfers and the greenkeeper. Not only does it withstand this constant traffic but is also suitable for playing from if a ball should land on the path.

### 7. Sound Resistant

One of the benefits of artificial grass is that it provides a surface, which is silent and comfortable to walk on, allowing the golfers to concentrate on their shot without the distraction of a noisy path.

### 8. Natural Appearance

The attractive green surface of the artificial grass blends well in to the course surroundings. This enhances a wide variety of areas that look and feel like natural grass without the associated wear or maintenance problems.

Taking all these points in to consideration your course would now remain open all year round, which in turn generates revenue and increases profitability.

## AGRONOMY

The Tines Shop for good value, high quality Tines & Bedknives

Find a broad range of Tines and Bedknives online from The Grass Group  
Delivered to your door  
[www.tines-shop.co.uk](http://www.tines-shop.co.uk)  
Tel: 01638 720123

## ALL WEATHER SURFACES



All-Weather Surfaces For Your Golf Club

- \* Pathways
- \* Tees
- \* Putting Greens
- \* Golf Mats
- \* Fairway Mats
- \* Accessories

Ensure the course is playable all year round



Tel: 01254 831666 Fax: 01254 831066  
Email: [sales@verdesports.com](mailto:sales@verdesports.com)  
[www.verdesports.com](http://www.verdesports.com)



Huxley Practice Tee at St Andrews Links

Top quality practice tees, golf course tees, putting & pitching greens, pathways, patios, cart tracks and lawns professionally designed and installed.

Tel: 01962 733222  
[sales@huxleygolf.co.uk](mailto:sales@huxleygolf.co.uk)  
[www.huxleygolf.com](http://www.huxleygolf.com)



## BUNKER CONSTRUCTION

To advertise contact **James**  
on **01347 833 832**  
or email  
[james@bigga.co.uk](mailto:james@bigga.co.uk)

## CONSTRUCTION



Photo courtesy of Ridding Park  
Repton Short Course 'Signature Island Green'

**JOHN GREASLEY LTD**  
Specialists in Golf Course Construction  
Tel. 0116 2696766



Golf construction experts

- Golf course construction
- Remodelling & renovation
- Grow in & maintenance
- Artificial surfaces

Call **01722 716361**  
[www.mjabbott.co.uk](http://www.mjabbott.co.uk)

## M.Downes Earthworks

- Golf Course Construction Services
- Green and Tee Reconstruction
- Lakes and Reservoirs • Cart Paths
- Bunker Remodelling • Drainage
- Lakes and Reservoirs

07753 856510 01829 781767  
[mdownesgolf@live.co.uk](mailto:mdownesgolf@live.co.uk)

## DRAINAGE

Traditional drainage and Lytag banding of greens and fairways

North Staffs IRRIGATION



Tel: **01785 812706**  
E: [NSIrrigation@aol.com](mailto:NSIrrigation@aol.com)  
[www.northstaffsirrigration.co.uk](http://www.northstaffsirrigration.co.uk)

## DRAINAGE



**Golf Course Drainage**  
Survey / Design / Installation / Greens / Fairways / Bunkers / Complete Courses  
Plastic Pipe / Turfdry Drainage System

For fast and friendly Nationwide Service

Contact Melvyn Taylor: 01283 551417  
07836 259133 / [melvyn@turfdry.com](mailto:melvyn@turfdry.com)

[www.turfdry.com](http://www.turfdry.com)



Drainage experts

- Design & installation
- Primary pipe systems
- Sand slitting
- Gravel banding

Call **01722 716361**  
[www.mjabbott.co.uk](http://www.mjabbott.co.uk)

## FLAGS

To advertise contact **James**  
on **01347 833 832**  
or email  
[james@bigga.co.uk](mailto:james@bigga.co.uk)

## IRRIGATION

**irritech limited**

Independent Irrigation Consultants

- Specialising in:-
- Existing system evaluation
  - System design & upgrade
  - Project management

Contact Roger Davey on:  
**01823 690216**  
[www.irritechlimited.co.uk](http://www.irritechlimited.co.uk)



Irrigation experts

- Design & installation
- Maintenance & support
- Online shop for spares
- Water storage reservoirs

Call **01722 716361**  
[www.mjabbott.co.uk](http://www.mjabbott.co.uk)

## IRRIGATION

Design Installation Service  
Irrigation supplies

North Staffs IRRIGATION



Tel: **01785 812706**  
E: [NSIrrigation@aol.com](mailto:NSIrrigation@aol.com)  
[www.northstaffsirrigration.co.uk](http://www.northstaffsirrigration.co.uk)



## MACHINERY WANTED

**Invicta Groundcare**  
Equipment Ltd

**We buy used golf course machinery**

Contact: Steve Dyne  
Tel No: 01474 874 120  
Email: [invictagroundcare@live.com](mailto:invictagroundcare@live.com)

## TOP DRESSINGS

**Banks Amenity Products Ltd.**  
FOR ALL YOUR BULK SUPPLIES  
NATIONWIDE DELIVERIES  
01858 464346 / 433003  
[www.banksamenity.co.uk](http://www.banksamenity.co.uk)



Producers of quality Top dressings, Specialist sands, Rootzone soils, Grit, Gravel and Pathway materials for Golf Courses, Playing Fields and Sports Pitches  
Cowbog, New Pittsigo, Fraserburgh, Aberdeenshire, AB43 6PR  
Tel: **01771 653777**  
email: [sales@lovie.co.uk](mailto:sales@lovie.co.uk)  
[www.lovie.co.uk](http://www.lovie.co.uk)



Pioneering the development and production of high quality sand-based products for over 150 years



Contact Sharon Morris on  
**07932342044** or email  
[Sharon.morris@mansfield-sand.co.uk](mailto:Sharon.morris@mansfield-sand.co.uk)  
[www.mansfield-sand.co.uk](http://www.mansfield-sand.co.uk)

## TREE MOVING

Tree Spade & Telehandler Hire



**BENBURGESS** 01603 628251  
[www.benburgess.co.uk](http://www.benburgess.co.uk)

## TURF



Specialist Growers of Turf for Golf Courses

**Rootzone Turf for Greens**  
Grown on USGA rootzone, top-dressed throughout the year, and mown at 6mm.  
Predominantly bent sward

**Turf for Tees, Surrounds, Approaches and Fairways**  
Various mixtures including ryegrass/fescue, 100% fescue, and bent/fescue grown on sandy loam topsoil.

**Bunker revetting turf**  
40mm thick  
Small or big roll  
Free loan of big roll laying frame

Tel: **01652 678 000**  
[www.tillersturf.co.uk](http://www.tillersturf.co.uk)

## USED MACHINERY

[www.usedturfmachinery.com](http://www.usedturfmachinery.com)

## WASTE/WASHWATER TREATMENT

**Waste2Water**  
BIOLOGICAL VEHICLE & EQUIPMENT WASH-OFF SYSTEMS

ESD Waste2Water Europe Ltd.  
Tel: 01782 373 878  
Fax: 01782 373 763  
E-mail: [info@waste2water.com](mailto:info@waste2water.com)  
Web: [www.waste2water.com](http://www.waste2water.com)



# Recruitment

## Advertise your recruitment here ... and online for one month

at [www.bigga.org.uk/careers](http://www.bigga.org.uk/careers)  
 from £595+vat for an 1/8 advert  
 Contact Jill Rodham on  
 01347 833 812



### Technical Sales Representative

Competitive Salary plus vehicle

Due to retirement DGM are looking for a highly motivated and ambitious self-starter to take over an established customer base in Somerset and the Dorset Borders.

Main Responsibilities

- Manage our existing customers and promote our portfolio of turf and ground care products and services.
- Actively seek new customers and opportunities to expand the business.
- Give technical support to our customers. Trouble shoot, minor maintenance, training and carrying out demonstrations.
- Network with end users, institutes and trade associations.
- Solid sales experience with ability to communicate technical information. Good mechanical knowledge, essential.
- An understanding of the turf care and ground maintenance markets. Ideally some knowledge of turf science.
  - The ability to communicate effectively at all levels.
- Based in and with a geographical knowledge of the area.
  - A clean, full UK driving licence.

*If you have the necessary skills, experience and enthusiasm please send your CV to:*

Email: [charlotte@devongardenmachinery.co.uk](mailto:charlotte@devongardenmachinery.co.uk)  
 DGM, Kerswell Gardens, Newton Road, Torquay, TQ2 7HX



### FAST TRACK TO THE FUTURE !

**TRAIN ON A TOP 100 GOLF COURSE IN THE USA !  
 BE PART OF THE CREW FOR A US PGA TOUR EVENT !  
 IMPROVE YOUR LONG TERM CAREER PROSPECTS !  
 GAIN VALUABLE EXPERIENCE & KNOWLEDGE FROM THE BEST SUPERINTENDENTS IN AMERICA !**

**GUARANTEED TO GET YOU AHEAD OF THE COMPETITION**

**REQUIREMENTS:  
 CLEAN DRIVING / DRUG RECORD  
 MUST BE ENTHUSIASTIC AND MOTIVATED  
 MUST HAVE AT LEAST NVQ 2 OR ONE YEAR OF FULL TIME TURFGRASS EDUCATION**

**PROGRAMS FROM 6 TO 18 MONTHS  
 HELP WITH VISAS, TRAVEL PLANS AND INSURANCE  
 PLACEMENT AND ACCOMMODATION ARRANGED  
 AVERAGE WAGE \$2,200.00 PER MONTH  
 OPTIONAL ONLINE TURF CLASSES AVAILABLE**

FOR MORE DETAILS CONTACT:  
**Mike O'Keefe**, The Ohio Program  
 Telephone: 001-614-688-5653  
 E-mail CV to: [okeefe.1@osu.edu](mailto:okeefe.1@osu.edu)  
[www.ohioprogram.org/applynow/IA.php](http://www.ohioprogram.org/applynow/IA.php)



Godfreys are John Deere's leading Turfcare equipment specialist representing Kent, Sussex, Surrey, Berkshire and South London.

Due to the expansion of our sales team, we are looking for a highly motivated, dynamic individual with a proven record in sales. The successful candidate will be customer focused, organised, ideally experienced in the use of CRM, word and excel software, with experience in selling or operating within the golf or land management industries.


**AREA SALES MANAGER  
 – GOLF & SPORTS TURF PRODUCTS**

To sell new and used turf equipment primarily into the golf and sports turf markets along with associated service contracts to new and existing customers. To have the ability to use and demonstrate these products effectively. Preparation of quotes, understanding finance products and communicating to a pre-determined level are all preferred requirements. The successful candidate will have strong people skills, be organised and have a basic level of IT competence.

We have specific vacancies in Kent & Sussex but welcome applicants from within and around our trading territory. We offer a competitive salary and reward significantly on success. Full product and system training will be given together with a period of guaranteed commission allowing for the successful candidate to be fully trained.

Please visit our website [www.godfreys.co.uk](http://www.godfreys.co.uk) for a detailed job description.

Applications should be made by emailing a CV & covering letter to [lynn@godfreys.co.uk](mailto:lynn@godfreys.co.uk) Closing date 31st January 2015



Godfreys are John Deere's leading Turfcare equipment specialist representing Kent, Sussex, Surrey, Berkshire and South London.

Due to the expansion of our sales team, we are looking for a highly motivated, dynamic individual with a proven record in sales. The successful candidate will be customer focused, organised, ideally experienced in the use of CRM, word and excel software, with experience in selling or operating within the golf or land management industries.

**SOUTHERN REGION SALES MANAGER  
 - COMMERCIAL PRODUCTS**

Responsible for the delivery of the Kent & Sussex commercial sales business plan through the management of external area sales representatives. Assisting in the structuring and delivery of equipment proposals to clients. Ensuring that the sale process and CRM tool is used effectively. Operating a number of direct accounts within a sales territory. A proved track record in the successful management of people is required.

Please visit our website [www.godfreys.co.uk](http://www.godfreys.co.uk) for a detailed job description.

Applications should be made by emailing a CV & covering letter to [lynn@godfreys.co.uk](mailto:lynn@godfreys.co.uk) Closing date 31st January 2015



### Head Greenkeeper Southwick Park Golf Club

Southwick Park is a private members club with a delightful 18 hole course set in beautiful parkland surrounding Southwick Lake. Located close to Portsmouth, the course has been established since 1977 and offers excellent practice facilities. We are looking for a well-motivated Head Green Keeper to lead a small but experienced and hard-working team. The position would suit a Deputy / Assistant Greenkeeper or an existing Head Greenkeeper who is looking for new challenges.

The position requires the following skills and qualifications;

**Essential**  
 NVQ L3 in sports turf management  
 PA1, PA2 & PA6 spraying licence  
 Competent in the understanding and application of COSHH regulations  
 Knowledge of routine machinery maintenance requirements  
 Have a sound knowledge of golf course irrigation systems

**Desirable**  
 At least 8 years' green keeping experience  
 Chain saw qualified  
 IT literate with knowledge of MS Word/Excel

**Behaviours**  
 Highly motivated and committed  
 Strong leadership qualities  
 Good interpersonal and communication skills  
 Adaptable and flexible to the needs of the Club

Applications in writing with a full CV to;  
 The General Manager, Southwick Park Golf Club, Pinsley Drive, Southwick, Nr Fareham, Hampshire, PO17 6EL  
 Or email with CV attached to: [jameslever@southwickparkgolfclub.co.uk](mailto:jameslever@southwickparkgolfclub.co.uk)  
[www.southwickparkgolfclub.co.uk](http://www.southwickparkgolfclub.co.uk)  
 Closing date for applications 10th February 2015.

### Would you like to join a sales team of an exciting, fast growing company?

KAR UK Ltd, with Head office located in Manchester, are a leading irrigation equipment wholesaler. As part of our continued growth strategy we are looking for an additional member to join our sales team and manage regions throughout the UK. Regions are yet to be decided. It will not be necessary to work out of Head office on a day to day basis but a home/satellite location north or Birmingham would be an advantage.

Our primary drive is Horticultural, last year the company broadened its field into Turf. KAR UK Ltd now supply & support a product range within the Golf, Sport and Landscape market. This is an exciting opportunity to grow with a dynamic company, meet new people, travel & develop yourself.

It is essential the successful applicant can present themselves professionally in a sales environment, be self-motivated, organised, provide good manners in all working conditions, have bounds of enthusiasm and not shy away from sales targets.

Experience within the Turf / Horticultural market would be an advantage. Irrigation knowledge would also be advantageous although training would be offered to the right candidate. A full UK driving license is essential.

Please send your application via email to Jimmy Sandison, [jimmy@karuk.com](mailto:jimmy@karuk.com)

### Head Greenkeeper Waltham Windmill Golf Club, Grimsby

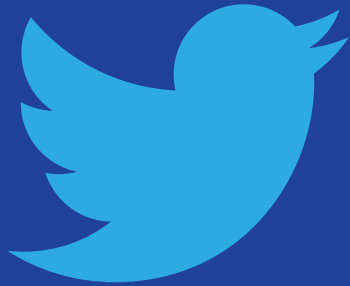
Waltham Windmill Golf Club is a parkland golf course with 5 lakes constructed in 1995 to USGA standards. Due to the retirement of our head green keeper we are looking to recruit an energetic and experienced Head Greenkeeper to continue the development of this beautiful course. Applicants should be self-motivated, committed and hardworking as well as having the necessary experience and ability to lead a team in maintaining and raising the standards.

The candidate should have: A keen eye for presentation and attention to detail, Experience of USGA greens, Qualified to NVQ3 or equivalent, Spraying certificates PA1, 2 & 6, A high level of competence with modern greenkeeping machinery, Fully conversant with current Health & Safety Regulations, Strong leadership and communication skills.

Please apply in writing or email with full CV and covering letter stating why you would be a suitable candidate and your salary expectations to The Secretary, Waltham Windmill Golf Club, Cheapside, Waltham, Grimsby, DN37 0HT

By email to [secretary@walthamwindmillgolfclub.co.uk](mailto:secretary@walthamwindmillgolfclub.co.uk)  
 Closing Date: 19th January 2015





# @BIGGALtd

A new page featuring the best Tweets and pics from the industry – don't forget to tag @BIGGALtd to give yourself a chance of being featured!

## Our favourite tweets this month...

**@Glen37Chris**  
@BIGGALtd loving the turfgrass information file

**@Graeme\_Roberts1**  
It's mornings like this that are what winters all about @BIGGALtd

**@HighspeedGroup**  
Come and see @HighspeedGroup @ #BTME @BIGGALtd in January 2015 to win our SPECIAL SPECIAL prize!!! #greenkeepers

**@CaddingtonGolfC**  
Fun supporting the @BIGGALtd MidAnglia section Xmas scramble - met some good industry pals! Back to tree planting!

**@ThePointHGK**  
Good day @stenedogolf for D&C @BIGGALtd Xmas bash always good to catch up with fellow greenkeepers. #toiletlock

**@avrogreenkeeper**  
Highlight of my career @the\_iog awards @BIGGALtd greenkeeping achievement of the year. Thank you

**@mgturfcare**  
@BIGGALtd north wales great day at wallasey gc course in superb condition thanks to @richie\_stevo for hitting me on the elbow from 60yds!!!

**@LAPUMagazine**  
Story of the Day continues the countdown to @BIGGALtd BTME 2015 #btme2015

**@TurfProUK**  
Also in the TP Briefing today the industry is counting down to @BIGGALtd 's BTME in January

**@BIGGAMidlands**  
Ok guys and girls who is coming to Harrogate with @BIGGALtd in January for BTME we could meet up for a debrief :)



@Graeme\_Roberts



@avrogreenkeeper



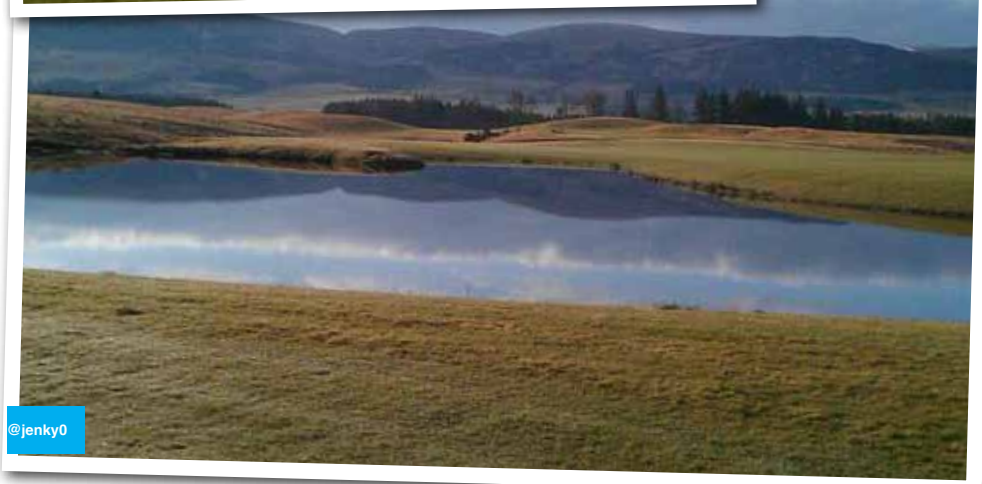
@LAPUMagazine



@CaddingtonGolfC



@CampeyTurfCare



@jenky0



**0%\* Finance**  
**0+2 Annual Payments**  
1st Payment March 2015

## Take Control of Premium Cut Quality

Our NEW generation of Fairway Mowers redefine cut quality and combine it with uncompromising productivity. Take advantage of our latest innovations like eHydro operation, TechControl management and SpeedLink cutting unit adjustment. Achieve the cut quality your course desires with the NEW A-Series.



**NEW**



OFFICIAL GOLF COURSE EQUIPMENT SUPPLIER



\*The finance offer is available for Golf & Bowls clubs in the UK only. The offer includes all golf & turf equipment, commercial mowing, utility vehicles and JD attachments. Offer is available until 28th February 2015. Finance is limited to 60% of retail value. Rates/payments may vary to reflect changes in tax and cost of funds. VAT where applicable. An administration fee will be charged. We may withdraw this offer at any time. Finance is subject to status. Terms and conditions apply. For further information contact your local John Deere dealer.

JohnDeere.com



**TORO**

**The Toro® greens package**

# Perfect Machines for Perfect Greens

**Only Toro has the full package of turf equipment to make your greens look and play like the best.**



THE GREENSMaster eFLEX 2100  
AND GREENSPRO 1240

**When it comes to producing greens that everyone wants to play, Toro is just perfect.** And now, with the fantastic new GreensPro 1240 dedicated greens roller, Toro is the only manufacturer with the full greens' maintenance equipment package. It means that, for every job – from cutting, rolling and aerating to top dressing and spraying – there's a quality Toro machine to help you produce the perfect green.

Full details at [www.toro.com](http://www.toro.com)

For a free onsite demonstration, call Lely on 01480 226800



**Lely. Your partners in turfcare. Call 01480 226800.**

Lely not only brings you Toro. Talk to us, too, about TYM compact tractors and Otterbine water management systems.



partners in turfcare