

GI

GREENKEEPER INTERNATIONAL

£5.50 DEC 2015

Published by the
British and International
Golf Greenkeepers Association

BTME 2016...

*...12 pages of new products
in our BTME preview special*



Featured Inside

WINTER TURF TIPS

ROYAL ST GEORGE'S

and much more...

By Royal Appointment

How a BIGGA member's radical approach has
enhanced one of the UK's premier links courses



ALSO INSIDE... BASIS : COTSWOLDS CLUB : ROYAL JERSEY

PUT US TO THE TEST!

COME AND SEE US AT BTME
STAND M2



FOR A LEGENDARY PERFORMANCE
ON YOUR COURSE, CALL 01473 270000

www.jacobsen.com

GI/BTMEtest/12/2015

JACOBSEN[®]

BIGGA



BIGGA President
Sir Michael Bonallack,
OBE

BIGGA President Elect
Iain Macleod

BIGGA Chairman
Les Howkins MG

BIGGA Vice Chairman
Stuart Greenwood

BIGGA Past Chairman
Chris Sealey

BIGGA Board Members
Rob Welford, Andy Baker, Scott Reeves, Kenny MacKay, George Barr, John Keenaghan

BIGGA Chief Executive Officer
Jim Croxton

BIGGA General Manager
Tracey Maddison
traceymaddison@bigga.co.uk

BIGGA Finance & Procurement Manager
Steve Wragg
steve@bigga.co.uk

Contact Us
BIGGA House, Aldwark, Alne, York,
YO61 1UF
info@bigga.co.uk
www.bigga.org.uk
Tel – 01347 833800 | Fax – 01347 833801

GREENKEEPER INTERNATIONAL

The official monthly magazine of the British and International Golf Greenkeepers Association Limited.



Production

Design & Artwork Production
Andrew Price
Tel – 01423 560086

www.andrewpricedesign.com
@APriceDesigner



Editorial

Communications Executive
Steve Castle
Tel – 01347 833800
ext 510
steve.castle@bigga.co.uk
@SteveCas12



Advertising

Business Development Manager
Jill Rodham
Tel – 01347 833800
ext 519
jill@bigga.co.uk
@JillyPops12

Printing
Warners Midlands Plc, The Maltings, Manor Lane, Bourne, Lincolnshire PE10 9PH
Tel – 01778 391000 | Fax – 01778 394269

Contents may not be reprinted or otherwise reproduced without written permission. Return postage must accompany all materials submitted if return is requested. No responsibility can be assumed for unsolicited materials. The right is reserved to edit submissions before publication. Although every care will be taken, no responsibility is accepted for loss of manuscripts, photographs or artwork. Opinions expressed are not necessarily those of the Association, and no responsibility is accepted for such content, advertising or product information that may appear. Circulation is by subscription. Subscription rate: UK £50 per year, Europe and Eire £65, Rest of the World £95. The magazine is also distributed to BIGGA members, golf clubs, local authorities, the turf industry, libraries and central government.



When you have finished with this magazine please recycle it.



ISSN: 0961-6977
© 2015 British and International Golf Greenkeepers Association Limited

WELCOME FROM BIGGA



Golfers enjoying a round at Frilford Heath Golf Club

Golfer Enjoyment Remains Key

It seems winter has finally arrived in the UK, bringing with it conference season for both the sportsturf and golf industries.

I was delighted to attend the R&A's recent pace of play forum 'Time for Golf' held at St Andrews, and see that a broad approach was being taken to this thorny issue, including the important factors of course set up and presentation. I was particularly taken with Stuart McCole's contribution regarding practices at Castle Stuart Golf Club. Stuart, formerly course manager at Kingsbarns and now general manager at Castle Stuart, basically asserted that their strategy is to ensure that all golfers are having such a great time on the course they don't take too much notice of how long they're out there! I am of course considerably simplifying his message but the essence is true; golf is a leisure activity as well as a sporting one and the key is enjoyment. The time taken to play is a key part of the enjoyment of golf and we mustn't forget that, but it is for many just one slice of the overall cake. A key conclusion from the forum was that the management of play is critical, encompassing starting intervals, player management and the set up of the course.

I agree completely, strong and effective golf club management is crucial to the health of the sport, which is why BIGGA has recently joined forces with the GCMA and PGA to collaborate on a fully accredited qualification for Golf Club Management, which will be launched early next year. There is no doubt the monumental advancements in the overall conditioning of golf courses over the last two or three decades are intrinsically linked to improvements and developments in greenkeeper education. I firmly believe we will now begin to witness similar developments in golf club management and it is fantastic that BIGGA is involved right from the beginning. There is already a well-trodden path of course managers moving into club

management and, whilst it is always a shame to see talented practitioners making the jump from greenkeeping, it is encouraging that the experience they gain is so transferrable. Additionally, it is vital that the future generation of club managers understands the importance of the golf course and its maintenance to their business.

On the subject of education the Continue to Learn programme at BTME 2016 is filling up extremely quickly, a number of individual aspects are sold out or close to it so please don't delay in booking your place at THE greenkeeper education event of the year.

The concurrent GolfBIC event for golf club owners, operators and managers is also filling up nicely, if you haven't already please encourage your club owner and/or manager to attend and enjoy what is such a beneficial few days for the entire golf industry.

May I wish all our members and friends a Merry Christmas and a very successful and prosperous New Year.

Enjoy the read.



Jim Croxton
Chief Executive

GI CONTENTS

A look at what's inside the magazine this month

DECEMBER 2015

FEATURES

20 BTME 2016 Preview

A glimpse of some of the new products heading to Harrogate in January

32 The Way of Winter

Dr Andy Owen and Henry Bechelet look at turf management strategies as temperatures plunge

36 An Old Course with a New Beginning

Laurence Pithie reports from Chipping Norton Golf Club after they came under new ownership

40 We're 'Appy and We Know It

How Bayer's Turf App can help greenkeepers – plus an opportunity to earn a CPD Credit

44 Royal Rescue – Cover Story

How a BIGGA member's radical approach has enhanced one of the UK's premier links courses

48 Cap Fungi – Mushrooms and Toadstools

The last BASIS article of the year sees Sherriff Amenity's Graham Paul focus on fungi

52 Water Independence

How Royal Jersey Golf Club is reaping the benefits from an independent water supply





32



44



REGULARS

- 3 Welcome From BIGGA**
- 6 Chairman's Word**
- 8 Newsdesk**
 - BTME Update
 - David Cole MG
 - Jim Grainger
- 14 Membership News**
- 16 L&D News**
- 18 Industry Update**
- 56 Around the Green**
- 66 Greenkeepers Training Committee**
- 68 Buyers Guide**
- 70 Recruitment**
- 74 @BIGGALtd**



BIGGA
British and International
Golf Greenkeepers Association

Published by the
British and International
Golf Greenkeepers Association Ltd



Chairman's Word

BIGGA National Chairman, Les Howkins MG, gives his thoughts for the month

Planes, trains, automobiles, tractors, mowers and diggers

Well I am sure I am not the only one that thought things were meant to get quieter in the winter! When I first started greenkeeping the fairway mower (gang mowers) would be stripped down and sent away for the winter and not be used for months, leaf blowing was non-existent, a switch and a rake were the tools of choice and if we built one new tee that was all we did. Oh how the world has changed; strong growth to the end of November, a plethora of leaf collecting equipment too numerous to list and so much winter construction I may well still be going come the spring.

It just goes to show how the industry has changed and we, as greenkeepers have learnt to adapt to the modern demands. At home on the ranch we have been working on a fairly large scale project consisting of a tee rebuild and hole redesign including new bunkers and tree planting. Actually doing the job is the easy bit, while the planning, budgeting and communication have been the challenging parts. These non-turf skills are now as, if not more important, than our turf related talents. I have probably used BIGGA's educational offerings more than most members and developing these non-turf skills has been a real help during my career. Something I have done for many years is be honest with myself to highlight my weaknesses or skill areas that are lacking and then worked on strengthening them through continued professional development.

Sales for the Continue to Learn programme at BTME are doing amazingly well, but this year as in years gone by, many greenkeepers stay in their comfort zones and book on to courses without ever carrying out a skills self assessment. If you are planning a late booking for any education in Harrogate next month, ask yourselves the question - what do I need to learn not what do I want to learn?

The last month has seen a fair amount of travelling and I have even sampled a new mode of transport! The overnight sleeper train from London to Inverness was an interesting experience and not



"As far I as can see there is only one show for greenkeepers and golf course managers and that is BTME in Harrogate"

what I was expecting. The cramped and noisy cabin did not make for a peaceful nights sleep, but the journey was worth it for the experience that awaited me at Castle Stuart, as you can see from my picture above. From start to finish it was a amazing, with top class customer service and a golf course that was an absolute joy to walk round. I could ramble on for several pages about how good it was but you would get fed up with it soon enough, all I will say is thank you to Chris Haspell and his team for their hospitality and for producing a world class golf course in one of the most beautiful places in the world.

The next stop on the tour was Saltex and the IOG Awards dinner. The new Saltex was interesting, making its home at the NEC with the new venue sparking the old debate about one show. As far I as can see there is only one show for greenkeepers and golf course managers and that is BTME in Harrogate next month and there are absolutely no plans for that to change in the near future.

Moving on, I attended several conferences and seminar days from the South East to Dublin and back over the sea to Carlisle. I would like to apologise to all those members who attended the South West & South Wales Conference as I had to cancel my attendance at the last minute. I don't like changing plans and letting anyone down, but I am a husband

and father to two young girls and they needed me at home after the loss of their Nan at the good old age of 90.

As the year comes to end, there is something new and exciting on the horizon in the form of the new Trailblazer Apprenticeship scheme. I have just taken on two young men at Richmond who will be enrolled on the scheme as soon as it goes live in January 2016. It's been a strange last quarter at Richmond as after several years of amazing stability in my team it's been all change; two new apprentices have joined the team as has Jack Slade as a qualified assistant in the last month, and I am currently interviewing for another assistant to replace Paul Carella who is moving on to pastures new after a fantastic five years here at the club. I would like to wish Paul all the very best in his new job, he will be missed not only by Richmond Golf Club but by me personally.

All that leaves me with is to wish you all a very Happy Christmas and a Fuzz-free New Year.

**All the best
Les**

Contact details

Les Howkins MG
Email: chairman@bigga.co.uk

Funding your future

The funding and assistance provided by BIGGA Partners and BIGGA Education Supporters underpins the Association's considerable investment in Continuing Professional Development and all our educational activity. They are investing in the future of BIGGA members, we are hugely grateful and urge you to show them your support



JOHN DEERE



Bayer CropScience



BERNHARD grinders

Individual Contributors: Steven Tierney MG, Chris Lomas MG, Andrew Campbell MG CGCS, Espen Bergmann, Nick Gray, Steve Dixon, Richard McGlynn, Jaey Goodchild, Michael Beaton, Greg Evans, Frank Newberry

The stage is set for huge BTME 2016



Only weeks remain before the turf management show of the year – and BTME 2016 is set to be one of the biggest yet with five Halls of exhibitors, a bumper education programme and one of the industry’s major conferences joining the party!

BTME 2016 is the first for several years to feature five Halls at the Harrogate International Centre with Hall Q joining the usual A, B, C and M. Over one hundred exhibitors - from the industry’s biggest worldwide names to brand new companies - will be putting on the most diverse show in the industry featuring everything from fungicides to turf apps for smartphones.

Jill Rodham, BIGGA’s Business Development Manager, said: “BTME 2016 is the only place in the turf management industry where thousands of delegates from all corners of the sportsturf management sector come together with hundreds of exhibitors.

“There will be five Halls showcasing all manner of new products, innovations and more and we’re very confident it will be a hugely successful show with plenty

of business done during the week.”

The thriving Continue to Learn programme again gets the show of the year underway. There will be in excess of 240 hours of education available to visitors, over 40 hours of which are free of charge to attend. Encompassing events for Course Managers, Deputies, First Assistants and Greenkeepers; Golf Club Managers; Directors of Golf; Groundsmen; Journalists and PR representatives, there is an education opportunity for everyone working within the sports turf industry.

Headline speakers include Elizabeth Guertal, Turfgrass Professor at

Auburn University in the United States, who will be appearing at the Turf Managers Conference, held for the first time in the Harrogate’s historic Royal Hall on Monday 18 January. The subjects covered are too numerous to list in full but include golf mechanics, mathematics, photography, team appraisals and soil analysis! Head to www.btme.org.uk/education for the full programme.

Sami Strutt, BIGGA’s Head of Member Development, said: “This year we are again aiming to put on first-class education for over 3,000 delegates at the Continue to Learn programme. Early figures show we are more

than 50% up on bookings from this time last year, so I urge you to book a place on our seminars, workshops, sessions and conferences now to avoid disappointment!”

As well as exhibitors, Hall Q will also house the two-day Golf Business and Industry Convention (GolfBIC), presented by the UK Golf Course Owners Association and the Organisation of Golf & Range Operators, on Wednesday 20 & Thursday 21 January. Presenters include Lodewijk Klootwijk, Chief Executive of the European Golf Course Owners Association, and Jay Karen, Chief Executive of the National Golf Course Owners Association in the USA.

Before that event, Tuesday 19 January features the inaugural Groundsman Conference, hosted in association with the IOG, which will include educational sessions on cricket, rugby and a debate on natural versus synthetic turf.

BIGGA CEO Jim Croxton said: “The excitement is now palpable as BTME 2016 approaches, and the continued evolution of the show is evident as we



BTME

prepare to welcome not only thousands of delegates and exhibitors but also GolfBIC for the first time.

"We're confident this will attract even more of the key figures and decision makers from golf clubs. I'm looking forward to sharing the HIC with GolfBIC delegates and presenters and I know all of our exhibitors will be very keen to talk business with them too. The stage really is set for a memorable week at our flagship event."

As usual, there will also be a host of social events staged throughout the week as greenkeepers from the UK, Europe and even further afield mingle in the North Yorkshire town. The third BIGGA Welcome Celebration will be held in the Royal Hall on Tuesday 19 January at 5.30pm. Attendance is again free, and this year will feature the unveiling of the winners of three new BIGGA Awards – BIGGA Young Greenkeeper of the Year sponsored by Jacobsen, Championship Greenkeeping Performance of the Year sponsored by GBR Technology and BIGGA Greenkeeping Achievement of the Year sponsored by Pitchcare.

BTME 2016

opens for business at 8.30am on Tuesday 19 January and closes at 2.30pm on Thursday 21 January. Continue to Learn 2016 runs from Sunday 17 to Thursday 21 January.

Avoid the queues and pre-register for BTME 2016 NOW by heading to www.btme.org.uk and clicking on the 'Register Now' tab on the right hand side. We've listened to visitor and exhibitor feedback and altered BTME's opening hours – details are on the BTME website homepage. To book your education slot, visit www.btme.org.uk/education

PERFECT PETER AT CLANDEBOYE

The first BIGGA Northern Ireland Golf Championship was held at Clandeboye Golf Club on Friday 2 October in glorious sunshine. This event brought together 21 players representing 9 different clubs from as far north as Faughan Valley down to Donaghedee in County Down.

As part of the plan to re-engage with the greenkeeping community in Northern Ireland, we invited non-members to participate. Some 10 greenkeepers took advantage of this opportunity although they were not allowed to win the Championship.

Our winner on the day was Peter Roberts from the host club who became the first Northern Ireland Golf Champion. The Challenge Cup Trophy was awarded to Rodney McLoone from Portstewart Golf Club who had the best score in the second class section. Bernard Findlay, Course Manager at Portstewart, was on hand to present the trophies.



Our thanks go to Terry Crawford, Course Manager at Clandeboye and the greenkeeping team for presenting an excellent course. Our thanks also go to the administrative and catering staff at Clandeboye for making the event a success.

We now move forward by seeking a venue for the 2016 championship and it is hoped that there will be an increase in the numbers taking part.

John Young
Regional Administrator, Scotland & Northern Ireland

KINGS OF THE CASTLE

The venue for the 2016 Scottish Open, Castle Stuart Golf Links, opened their doors to BIGGA Scottish members on 6 October with around 30 members from across the

country taking advantage of this great opportunity.

It was a fun day with the competitors playing as a team of two, and our winners were John Stuart and Simon Hoy from Deeside Golf Club, who returned an excellent eight under par 64 to win the sweep.

The highlight of the day though was Derek Scott (Scoonie Golf Club) holing his 3rd shot at the par five second for a net albatross.

A story that will be told and told again for evermore!

Our sincere thanks go to Chris Haspell (Course Superintendent) and Stuart McColm (General Manager) for arranging this special event for our members that also raised just under £100 for the BIGGA Benevolent Fund.

John Young
Regional Administrator, Scotland & Northern Ireland



MIDLAND WHITEMOSS INTERSECTION EVENT



The Midland Whitemoss Intersection event was held at Stoke Park earlier this month. The winning team were Adam Jones (Handsworth), Simon White (The Chase) and

Jam Harrison (Redditch) representing the Midland Section with a combined score of 100 points. A big thanks to Mike Whitehouse from Whitemoss for sponsoring the event.

MID ANGLIA DONATE £500 TO BENEVOLENT FUND

Thank you to members of BIGGA's Mid Anglia Section who voted to make a £500 donation to the BIGGA Greenkeepers Benevolent Fund at their AGM.

Martin Mison, Deputy Head Greenkeeper at Bury St Edmunds Golf Club, is Treasurer for the Section and said: "We always donate to a charity each year and this year we thought we would give £500 to the Benevolent Fund. This was proposed at the AGM and approved overwhelmingly.

"We recognised that the Fund is there to help greenkeepers in need and we know it will be beneficial to people in our industry who have fallen on hard times."

MORE SUCCESS FOR ON-TARGET IAN

Congratulations to on-target BIGGA member Ian Chenery, Course Manager at Woodbury Park Golf & Country Club in Devon, who has won another National Championship in shooting.

Ian's had stellar success this year after winning a National title, being selected to represent Great Britain and triumphing in the GB F Class Long range challenge.

However, he had to overcome disappointment at the European Championships when his rifle barrel failed and he had to borrow a teammate's.

Now he has clinched the National title in the F/TR division to finish the shooting season off in style – and even got to celebrate with his 18 month old son Noel (pictured).

He said: "This latest competition was a league format and I knew I had to finish 4th or better to win overall. I was only three points behind the eventual winner but I managed to secure the all-important 4th place. It was another very tough, demanding competition but I'm very, very happy to have won. I feel like all my hard work has paid off.

"During the European Championship, a small piece came off my rifle barrel, so I had to share a rifle with another member of the Great Britain team, yet still managed to shoot a score of 72/75 at 1000 yards to help the team to victory.

"I would like to thank Sophie for supporting me throughout the season, which has been very tough as I lost my dad to cancer earlier this year. Thank you also to Mik from Dolphin Guns for building the rifle, Gareth James of Vicarage Firearms for fitting a new barrel in super quick time, and Lee at Mason's John Deere and Richard at Indigrow for the sponsorship of two league matches, it was very much appreciated."



AMANDA INTERVIEWS... DAVID COLE MG

This month, Amanda Dorans, Greenkeeper at Dundonald Links Golf Club, chats to BIGGA Master Greenkeeper David Cole, Loch Lomond Golf Club's Director of Golf Course and Estates.

AD: Hi David, tell us a bit about your career journey.

DC: In my youth I was pretty much into most sports and was a very keen golfer. I was always interested in what it took to present and manage a golf course and by luck was offered an opportunity at my local club in 1988 as a trainee greenkeeper which evolved into a three year apprenticeship which included college education.

Loch Lomond was under construction and I remember visiting during that time and was in awe of the beauty of the landscape, the mature woodland, the historic buildings and the golf course that was being created.



Although I was still a very young, naïve and inexperienced greenkeeper, I could tell that it was a special place and I had a desire to hopefully gain employment there one day.

In 1994 Loch Lomond was officially opened by its new owner, an American developer and I was very fortunate to be hired by Ken Siems. From 1995 to 1997 I gained valuable new skills, experience and knowledge and was able to undertake further higher education during that time. After the tournament in 1997 I travelled to the USA to work on the owner's other venues, mainly in New Mexico and Arizona. When I returned to the UK in 1998 I was hired as Assistant Superintendent at Loch Lomond.

In 2003 when the club acquired Dundonald I became Superintendent, and when Ken left in 2008 my role evolved into managing the golf course, estates, overseeing the club's maintenance and engineering activities. I have also helped guide the club with its ongoing environmental and energy programmes.

AD: What is your biggest agronomic challenge at Loch Lomond?

DC: The combination of the climatic conditions and the poor inherited soils. This location receives on average 2000mm of rainfall per annum, combine that with the soil make up which consists of rock and heavy clay that doesn't allow for fast water removal. As you can imagine good drainage systems are paramount. The club has invested massively over the years which has allowed us to have some control to provide good playability and present consistently good turf grass health following an IPM approach. However the annual rainfall and the soils don't go away, so the pressure is always on to

carry out effective and proactive works in small windows of opportunities.

AD: You have been committed to a best practice approach for many years, what advice would you give to others who are trying to get their committees on board?

DC: Try to get them on board and include them in the process. Detail all the benefits that club can gain that can include the environmental aspects, to enhancing the business reputation, to the potential cost savings. Continue to nudge and remind them by the sending or including them in relevant articles and publications, invite experts from the industry to your club for meetings or presentations.

AD: How important is education to you?

DC: It all depends on the level of success you're seeking to achieve but if you are a current or future course manager, assistant or a senior staff within your organisation, ongoing education and progressive development is vital. It helps you broaden the spectrum of your knowledge and hold your own mind and reason.

AD: What would you say to your younger self?

DC: At the start of my career I would encourage myself to get good education at the best turf programmes sooner, go work at as many venues as possible and travel as much as you can to gain as much valuable experience in work and in life.

Thanks David, great to catch up with you. Have a lovely Christmas and all the best for 2016!

TOP TOM



BIGGA members in the South East Region would like to extend their thanks to Tom Smith, Course Manager at Colne Valley Golf Club, who has decided to step down as South East Region Chairman after several years of fantastic dedication and commitment.

He has been replaced by Pete Smith, Course Manager at Birch Grove Estate, who said: "Tom has worked tirelessly for the benefit of all the members in the South East and promoted the benefits of the association far and wide, he will be a hard act to follow."

ENDEMIC CHALARA SPELLS THE END GAME FOR ASH

Whether chalara ash dieback is already endemic on common ash in the United Kingdom is still up for discussion but that's the way the UK government has been acting since the middle of this year. It's not all over until the fat lady sings but she has been giving a rendering edition of 'we'll meet again' for common ash since the last week of May 2015.

That was the month and year when the Forestry Commission (FC) stopped any pretence at detailed chalara disease reporting including outbreaks found on recently planted sites, having previously divided the country up into 10 km x 10km squares (hectads). Just one report of chalara ash dieback within a specific hectad is all that is required for the whole 100 km² to be designated as infected.

Scotland appeared to have had the best chance of stopping or slowing down the spread of chalara and this prompted FC Scotland in 2013 to set up a 'Sheltered Zone' in the extreme North West of the country, 'shielded' by a 'Buffer Zone' along its landward south-eastern edge. All infected recently planted sites in either zone would be destroyed in a bid to slow the arrival and spread of the pathogen in the wider environment, to help protect the high nature conservation value of ash woodlands in this area of Scotland.

However, following widespread breach of the 'Buffer Zone' earlier this year, followed on closely by the disease identified at seven sites in the 'Sheltered Zone', this policy and programme was thrown into disarray. Issue of Statutory Plant Health Notices previously required for destruction of infected ash trees on recently planted sites in these two zones was stopped on 15th September 2015.

A similar strategy had been mooted by FC England in 2013 with the construction of an 'imaginary Maginot Line' down the length of western England to shield and protect everything on the other (western) side from chalara ash dieback. However, this idea was soon abandoned when chalara ash

dieback promptly 'popped up' on trees in South Wales, Devon and Dorset.

Truth is that control or even containment of *Chalara fraxinea* and chalara ash dieback disease was a non-starter from the outset. As an air-borne, spore-spread fungal pathogen infecting one of the most widely distributed and frequently occurring native wild trees, it would clearly be impossible to manage. Common ash was essentially finished as soon as the disease first arrived on planting material imported from Europe, and then subsequently allowed to establish in the wider environment.

It took the UK plant health authorities 3 years and a lot of wasted time and money to realise that there is no such thing as a common ash tree which is genetically resistant to foliar infection by *Chalara fraxinea*, only trees which show some tolerance to the disease.

Attempts to find fungicides that could be used to chemically control the disease appear to have failed because government scientists focussed on expensive systemically acting, site specific fungicides. These are economically justifiable and appropriate for use in situations like professional turf but not on a common woodland tree, most

of the wood from which was going for firewood even before chalara arrived.

Common ash is now condemned to a slow death as will be the fate (albeit much more quickly) of widespread interest previously shown by the national media in ash trees and chalara ash dieback disease.

Europe-wide there have been unprecedented levels of interest and cooperation in an attempt to control this disease. A pan-European organisation appropriately called 'Fraxback' (after *Fraxinus excelsior*) was established in an effort to save the tree. Given the equally unprecedented amounts of cash splashed around by the UK government on surveillance and research, and ultimately all to no avail, then 'Chalara ash cashback' might be a more appropriate name for the situation this side of the English Channel.

Dr Terry Mabbett




CONTACT

Long-lasting Medallion TL gives you the confidence and peace of mind that your turf is safely protected.

The fludioxonil in Medallion TL is the ONLY Contact+ active – targeting disease on the leaf AND in the thatch.

HAPPY RETIREMENT JIM

Happy retirement to Jim Grainger, former Course Manager at Ringway Golf Club, a Braid-designed course located in the heart of Cheshire.

Jim, who was mentored by Jack McMillan in his early days as a greenkeeper, spent 17 years in charge at Ringway before retiring in mid October.

He began his greenkeeping career at Cardross Golf Club, under the tutelage of Jack, and was Head Greenkeeper aged just 21 at Durham City Golf Club. He then had spells at Largs Golf Club and Letham Grange Golf Course.

He said: "The highlight of my career was probably hosting the Scottish Amateur Championship and two Challenge Tour events during my time at Letham Grange, it was very enjoyable."

Greenkeeping remains a family affair for Jim – his daughter is the wife of Sandy Reid, Links Superintendent at Carnoustie. He plans to spend his retirement playing golf, shooting, walking his dogs and spending time with his four grandchildren.



Medallion TL

Bio-inspired explosive performance



Visit www.greencast.co.uk
for more information

 **Medallion[®] TL**

syngenta.



Membership News

The latest news from BIGGA

Membership News - the section which updates you on the countless benefits of being a BIGGA member. We're on hand to help.

You can contact BIGGA House, our Regional Offices, our Personal Accident Helpline, Legal Assistance and our Lifestyle Counselling Helpline.

You can also save money with our BIGGA Xtra Benefits scheme. More information can be found in the Members' Area of the BIGGA website.



BTME 19-21 JAN 2016

SEE US AT BTME – AND WIN A TABLET!

Don't forget to come and see us on the BIGGA Stand at BTME 2016, Hall B Stand 23 - and you can win a tablet courtesy of BIGGA Partner Rigby Taylor and BIGGA Education Supporter Mansfield Sand!

Existing BIGGA members simply need to call in to check their details are correct with us (particularly email addresses and mobile phone numbers) and your name will be automatically entered into a free prize draw to win a tablet computer.

Rigby Taylor's Marketing Director Richard Fry said: "Rigby Taylor and Mansfield Sand are pleased to co-sponsor this initiative and supply the three tablets.

"Both companies are enthusiastic and long term supporters of BIGGA, and we look forward to congratulating the daily winners."

Rigby Taylor are exhibiting on Stand B60 and you can visit Mansfield Sand at B38.

BIGGA's Stand will offer a 'Membership Services' area where existing members can update their details, check their membership, renew their

membership and new members can obtain all the information relating to joining BIGGA.

You can also meet members of the Young Greenkeepers Committee, chat to BIGGA's five Regional Administrators, find out about Learning & Development initiatives and benefits, pick up a calendar or wall planner and donate to the BIGGA Benevolent Fund.

See you in January! For more on BTME follow us on Twitter @BIGGALtd and also follow @BIGGA_BTME for the latest updates on the exhibition of the year.

CGCS REVIEW

In its Annual Review of Remuneration for Golf Club Managers and Greenkeepers for 2016, the CGCS recommends an increase of 2.25% over the 2015 figures.

This recommendation, although not in line with the committee guideline of using the RPIJ, which in August 2015 was 0.5%, takes into account the Office of National Statistics Wage Inflation (NSWI) rate of

3%. This variation from the guidelines was thought relevant because of the recent history of very low increases and the large difference between RPIJ and NSWI.

The CGCS recommended rates of pay package are guidelines only and the Committee is aware that they are for negotiation only and that, as in many industries, some staff will earn substantially more, while others will earn less, depending on the standing of the golf club.

The CGCS wants to emphasise that these scales are for 'packages' and should be treated as such, whilst taking into account individual and team performance and any increase in responsibility and/or qualification.

The CGCS, once again, wishes to remind clubs that they must be aware of any changes to pension or employment legislation.

Regional variations will shortly be published and downloadable in PDF format from the BIGGA and GCMA websites.

Contact Details

Tracey Maddison
General Manager
traceymaddison@bigga.co.uk

Elaine Jones
Membership Executive
elaine@bigga.co.uk

Rachael Duffy
Events & Membership Executive
rachael@bigga.co.uk

Tel: 01347 833800
(option 1 for Membership)

You can follow BIGGA on Twitter @BIGGALtd

BIGGA Regional Offices

Scotland & N. Ireland
John Young
07776 242120
johnyoung@bigga.co.uk

Northern
Sandra Raper
07866 366966
sandra@bigga.co.uk
@BIGGANorthReg

Midland
Roger Butler
07525 593 359
roger@bigga.co.uk
@BIGGAamidlandREG

South East
Clive Osgood
01737 819343
07841 948410
cliveosgood@yahoo.co.uk
@cliveosgood

South West & South Wales
Tracey Walker
07841 948110
tracey.walker@bigga.co.uk
@biggaswsw

OTHER USEFUL NUMBERS

(Full Members only)
Personal Accident Helpline
0121 698 8046 / 43
Greenkeepers Legal Assistance
0800 177 7891
Lifestyle Counselling Helpline
0844 770 1036
www.arclegal.co.uk/carefirst

Hydrozone Wetting Agent Engineered for...



...Maximum Performance



GBR Technology Ltd
 Units 6-8, Jupiter House, Calleva Park,
 Aldermaston, Reading, Berkshire, RG7 8NN
 Tel: +44 (0)118 982 0567
 Fax: +44 (0)118 982 0590
 Email: info@gbrotech.co.uk
 www.gbrotech.co.uk/amenity



OVER 120 EXHIBITORS FROM ACROSS THE INDUSTRY
 THE BIGGEST EVER OFFERING AT CONTINUE TO LEARN



BIGGA PRESENTS BTME 2016 INCORPORATING C2L & GOLFBIC
 AT THE HARROGATE INTERNATIONAL CENTRE
 CONTINUE TO LEARN 17-20 JANUARY 2016
 TURF MANAGERS CONFERENCE 18 JANUARY 2016
 BTME 19-21 JANUARY 2016
 GOLFBIC 20-21 JANUARY 2016

Visit btme.org.uk and click Register Now



Visit btme.org.uk and click Register Now



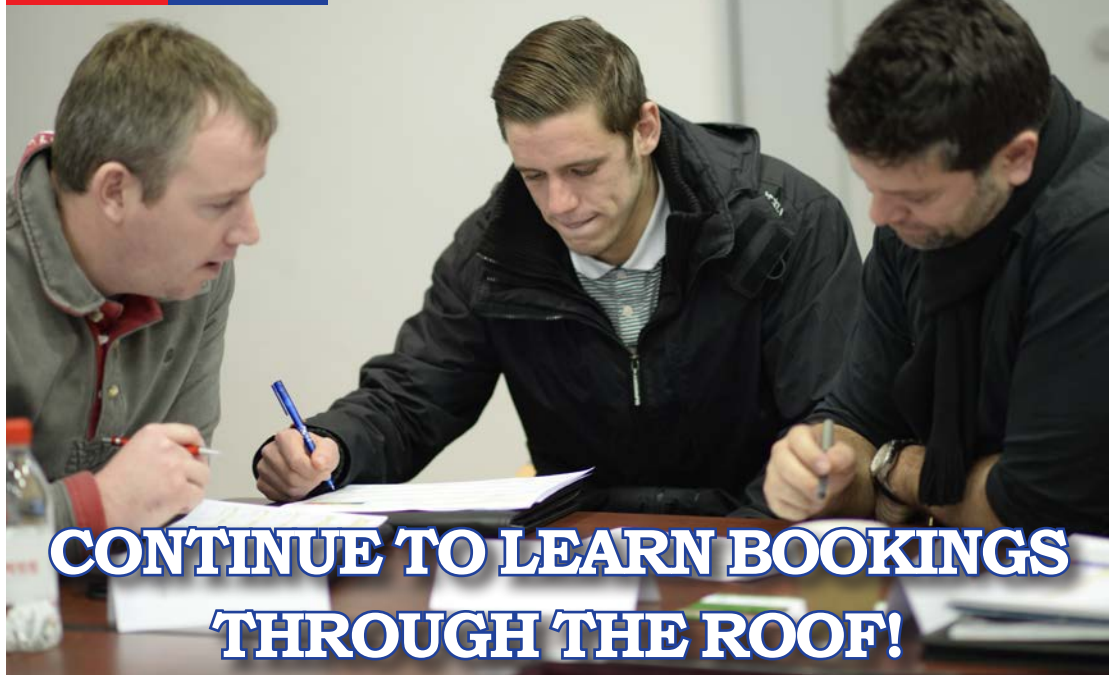
L&D News

The latest from the Learning and Development department at BIGGA

Learning & Development News has the latest updates on CPD and everything related to greenkeeper education

and training, supported by our BIGGA Partners, BIGGA Education Supporters and Individual Contributors –

funding your future. Contact the Learning & Development team at BIGGA House for more information.



CONTINUE TO LEARN BOOKINGS THROUGH THE ROOF!

Bookings for BIGGA's Continue to Learn at BTME continue to flood in and are 100% up on the same time last year, with over 240 hours of education and 40 of those being free we are expecting it to be busy!

At the time of writing, four events are sold out already, they are:

- **Fertiliser Programmes from First Principals** (Monday 18 January)
- **Woodland and Habitat Management** (Monday 18 January)
- **Managing Difficult Situations** (Wednesday 20 January)
- **Making the Most of Your Heathlands** (Wednesday 20 January)

Pre-bookable places on 'Seminar 18 – Keep Your Greens Healthy – Latest Research and Sustainable Options' and 'Seminar 24 – Getting Your Greens Going in the Spring' are all gone.

Two sessions have been cancelled due to the speakers unfortunately not being able to attend, they are:

- **Seminar 8-Wetting Agents-The Next Generation of Technology** (Tuesday 19 January)
- **Career Development Session-Learning the Ins and Outs** (Wednesday 20 January)

They have been replaced with a new Career Development Session which is 'Introducing

the Young Greenkeepers Committee and How We Can Help You'.

The Young Greenkeeper Committee (YGC) has been created to assist young greenkeepers with their career development. 'Introducing the YGC and how we can help you' is a new Career Development Session to be presented by the YGC.

The Committee, which is a first for the Association, is comprised of members aged under 32 from across BIGGA's Regions. As a group of young greenkeepers themselves they want to help young BIGGA members work together in ensuring they are recognising their potential as young turf professionals. They aim to create an awareness of the array of opportunities available



Individual Contributors: Steven Tierney MG, Chris Lomas MG, Andrew Campbell MG CGCS, Espen Bergmann, Nick Gray, Steve Dixon, Richard McGlynn, Jaey Goodchild, Michael Beaton, Greg Evans, Frank Newberry

Contact Details

 Sami Strutt
Head of Member Development
07818 405606
sami@bigga.co.uk

 Stuart Green
Head of Member Learning
stuart@bigga.co.uk
@Stuart_BIGGA

 Deb Burnett
L&D Administrator
deb@bigga.co.uk

01347 833800 (option 3)
www.bigga.org.uk

AS SEEN AT SALTEX

CRX-410

VERSATILITY – Available as a roller mower, combination mower and a finishing mower

HIGH BLADE TIP SPEED – Superb cut quality, with even spread of clippings

CONTOUR HUGGING – follows ground undulations with ease

LOWER HORSE POWER REQUIREMENT – Suits tractors from 35hp

WESSEX PROLINE

TRY IT FOR YOURSELF! CALL US TO BOOK YOUR FREE DEMO TODAY!
T: 01264 345870 www.wessexintl.com

When only the best will do...

SCAN TO SEE A DEMO MOVIE

Follow us on:

to young greenkeepers and how these opportunities can boost your confidence and skills, which could one day help you land your dream job.

Learning Outcomes:

- **Meet the YGC and understand their objectives**
- **Create awareness of Opportunities/Awards**
- **Identify your own career path/goals**
- **Network with other young greenkeepers**

This Career Development Session takes place on Wednesday 20 January between 12 noon - 1pm.

We are still trying to track down the sender of a mystery fax booking for 3 people, no names, club or contact details were provided! Places have been reserved but can't be held indefinitely. Regardless of how bookings are made, an email confirmation will be sent out within 3 days of

making the booking. If you do not receive your confirmation, please contact Deb in the L&D Department.

Continue to Learn covers everything you could possibly need to equip yourself for success in your career including mechanics, budgeting, people management, managing conflict, grass identification, health and safety and much more.

The Turf Managers' Conference offers a fantastic range of education across one day – covering soil microbes, the role of phosphite and working effectively with the media to name just three topics!

BTME 19-21 JAN 2016

To book your places, and also pre-register for BTME 2016, visit www.btme.org.uk, Continue to Learn runs from 17-21 January, including the Turf Managers' Conference on 18 January, and BTME is from 19-21 January

CPD APPROVED MEMBERS THIS MONTH

Congratulations to the following members who gained CPD Approved status:

- Lewis Birch - Sunningdale Golf Club
- Stefan Carter - The Wentworth Club
- Joe Button - Meltham Golf Club
- David Wilkinson - Wrexham Golf Club
- Justin Manester - Teignmouth Golf Club
- Leslie Howkins MG - Richmond GC
- Gordon Moir - St Andrews Links Trust
- Robert Hogarth - Remedy Oak GC
- Andrew Hatcher - Coed-Y-Mwstwr GC
- Darren Anderson MG - Abergele GC
- Paul Selbie - Stapleford Abbotts GC
- George Mitchell - Newmacher GC
- Ashley Allpress - Roehampton Club

- Arnold Phipps-Jones - Retired Member
- Leigh Powell - Hockley Golf Club
- Christopher Taylor - Willesley Park GC
- Christopher Brown - The Gleneagles Hotel & Golf Courses
- John Reid - The Duke's St Andrews
- Colin Parish MG - Morecambe GC
- Richard Whittaker - Lytham Green Drive Golf Club
- Scott Reeves - Leyland Golf Club
- Stuart Ferguson - Dundas Parks GC

Congratulations to the following members for achieving their Milestones:
 Ashley Allpress
 Christopher Taylor

GOLF COURSE SUPERINTENDENTS ASSOCIATION OF IRELAND

GCSAI Launch Online CPD Programme

At the GCSAI's National Education Day, held at Croke Park in Dublin, Damian McLaverty, General Manager launched the GCSAI's online CPD programme. The GCSAI has nearly 400 members and were reviewing their own CPD provision, when they were introduced to BIGGA's. They felt that BIGGA's CPD programme would suit their membership and enquired about licencing a version from BIGGA.

For the last six months Damian has worked closely with BIGGA's Head of Member Learning, Stuart Green to develop a version for the GCSAI, which culminated in the launch on 24th November, at Croke Park. Stuart, who was there for the launch said; "The partnership between BIGGA and the GCSAI is one that goes beyond selling them a CPD system. For the future, we will be looking to collaborate on training and education and by having a CPD programme that is comparable, it will ensure the golf industry has a quality standard to gauge greenkeeper training by."

LELY IN SCOTTISH MOVE

Lely UK says it has reached agreement with three of its Toro dealers in Central Scotland to relinquish their contracts at the end of May 2016 to pave the way for Lely to provide its own sales and customer support services in the region. The dealers are Henderson Grass Machinery, Hamilton Bros and Thistle Groundcare Equipment. They will continue to receive Lely's full support and backing between now and the end of May for sales activity. All parties will work together to ensure a smooth transition of the Toro business to a new service centre in the region currently being planned by Lely.

Maintaining the excellent customer service provided by these dealers will be a top priority, with ongoing co-operation and support in place for the dealers to meet servicing commitments going forward.

The move follows a review of Lely's route to market strategy for Toro products.

The review concluded that change was needed if the long-term aims for the Toro brand and business in Central Scotland were to be realised – in particular the desire to enhance the focus on the Toro brand, as well as Lely's TYM compact tractor offering.

Lely UK turfcare senior manager David Cole said:

"The process leading to this decision was undertaken in collaboration with The Toro Company and has not been undertaken lightly. To be clear, our decision in no way reflects on the performance of the businesses affected. It's more a case of enhancing our brand positions and channelling resources for growth. Our vision for that growth and future customer support has created a roadmap for where we can take our brands in the next five to 10 years in Scotland.

"We are very grateful to the dealers affected by this decision for their good work in the past and expect to continue to work with them going forward."

In a joint statement, the directors of the dealers said: "As independent family businesses we are proud to have firmly established the global Toro brand locally in Scotland over the last 15 years.

This has been achieved by nurturing our clients, building their trust in the Toro brand and in that of our respective companies. Whilst we are disappointed at Lely's decision to move the operation in-house, we shall embrace the change and reassure our immensely loyal customers that we will continue to maintain our exemplary standards of service until the cessation of their contracts."



NEW PRODUCTS FROM GERMINAL AT BTME

Germinal will officially launch three new wildflower seed mixtures and a chart topping perennial ryegrass cultivar at BTME 2016. With a class-leading score of 9.2 for fineness of leaf, Cabrio perennial ryegrass promises tougher, harder wearing and more attractive swards. Meanwhile, the company's new wildflower mixtures offer greenkeepers and course managers an increased choice of environment and habitat specific wild flora options.

Cabrio, the latest addition to Germinal's portfolio of perennial ryegrass cultivars, offers chart-topping performance as a new cultivar on Table L1 of the Turfgrass Seed booklet for 2016. It will be available exclusively from Germinal as part of the company's 'Grade A' range of grass seed mixtures.

Cabrio is recommended for use on golf tees, tennis courts and cricket outfields and will be included in Germinal's A5 Cricket, Tennis and Tees mixture, A10 Golf Tees Divot

Repairs mixture and A28 Superfine Ryegolf and Outfield mixture.

Germinal has also launched three new wildflower mixtures for golf courses: Fairway Meadow, Links Habitat and Woodland Edge Wildflowers.

"We have seen an increasing demand in recent years for high quality wild flora mixtures to complement established and more contemporary golf courses," Germinal Amenity Sales Manager Richard Brown stated. "As a result, we have designed three new blends, each of which is tailored to a specific set of environmental challenges and designed to create a definitive wild flower habitat. The new mixtures complement the 44 existing wildflower mixtures that we already offer," he added. "As one of the longest-standing suppliers of wildflowers to the amenity sector, and with the sector's largest range of wildflower mixtures, we have a seed mixture to suit all soil types and locations. We can also formulate bespoke blends to meet site and customer specific requirements."

For more information about these or any other Germinal products go to www.germinal.com or speak to a Germinal representative at BTME at Stand A45.

RINGING IN THE NEW AT FARLEIGH



New course manager at Farleigh GC is BIGGA member Kenny MacPhail, who took over the reins at the 27-hole North Surrey club in November. Deputy Course Manager for the last 18 months, he has been instrumental in another new start at the club, a Wiedenmann Super 600 three-in-one collector which has just been installed.

“Versatility and huge capacity in equal measure made it an obvious choice,” said Kenny. “Farleigh is a 350 acre site with between 50-60 hectares of very heavy rough. Ours is a downland golf course with few trees on the course so we need the rough to act as a defence but it is very thick at the base making it far too penal for the golfers. We tested a several makes and models of cut and collect machines but nothing else really came close to dealing with it. The Weidenmann Super 600 is the biggest and most robust out there and I’m very happy with it.”

Wiedenmann’s Super 600 with its vast 4500 litre tank combines as a flail mower, scarifier and collector to legitimately earn the title ‘Su-

per’. Easily this one machine can do the work of several smaller machines. It has three operating functions - head unit lift and lower, hopper lift and hopper tip and in any of these modes it produces a high airflow which ensures that the collected material is suitably compressed. For such a big machine the Super 600 It is extremely manoeuvrable with a light footprint. The container lifts via a parallel system, with the hopper rotating - allowing the hopper to completely discharge collected material. Working depth or height of cut is easily and quickly adjusted.

“It compacts material very well. We can get two big loads into our trailer. Right now it’s out eight hours a day every day as we are presently clearing a ten hectare section. It won’t be long now before we change to the scarifying blades and scarify a few specific areas before returning to again in the spring,” continued Kenny MacPhail.

On hand throughout the sales process was Tom Bailey, grounds care specialist from Wiedenmann dealer, Ernest Doe at Esher.

BEN BURGESS EXPANDS TURF BUSINESS

John Deere has announced that dealer Ben Burgess & Co Ltd will be expanding its professional turf business in East Anglia from January 2016.

The Norwich-based company will be selling and supporting the full John Deere turf machinery range from its existing agricultural outlet at Coates, near Peterborough, from January 6th. As a result, Peterborough Grass Machinery Ltd at Westwood will be operating only as a John Deere homeowner equipment dealer from this date.



“As the turf industry continues to develop with the increasing use of new technology, higher value equipment and greater customer expectations for improved product support, John Deere and our dealers must be in a position to react to this ever changing market place,” said John Deere Limited turf division manager Chris Meacock.

“Over recent years we have been developing the national dealer network and working closely with dealers to improve their businesses, their level of product specialisation and the support they are able to provide to meet customer demands. These improvements have led to the need for larger, even more professional businesses capable of supporting all the functions the market now requires, while still maintaining a strong local presence.”

Ben Burgess & Co Ltd celebrates its 83rd anniversary this year as a dealer of agricultural, horticultural and construction machinery. It has been established in the turf machinery business since 1962, and has held the John Deere turf franchise since 1986, although it has been a John Deere agricultural equipment dealer for 50 years.

“Having already established a successful golf and turf business in our existing area of responsibility, we plan to introduce a hire service and a wider range of parts to this new sales area, as well as the increased level of specialist sales and service support that the professional turf market requires,” added Ben Turner, Ben Burgess managing director.

“From November our new turf area sales representative is Johnathan Harpham, who can be contacted on 07710 148411 or by email to johnathanharpham@benburgess.co.uk. Groundscare technician Nathan Setchfield has also joined our experienced team, and we look forward to working with our new customers from January 2016.”

BTME

PREVIEW

A look ahead to the BIGGA Turf Management Exhibition in Harrogate, 19-21 January 2016

BTME 2016 features hundreds of exhibitors showcasing all manner of products across five Halls in the Harrogate International Centre – with Hall Q open as well as A, B, C and M. Here is just a taste of what to expect over the three days...



INNOVATION THE KEYSTONE FOR VITAX

BIGGA Education Partner Vitax Amenity is promoting the new opportunities for line-marking technology in golf course traffic management at this year's BTME show.

The next generation Briteliner Arrow, unveiled at BTME 2015, is already being applied successfully for a range of duties at clubs across Britain, including boundary, hazard lines and driving ranges.

The benefits of speed, accuracy and cost efficiency that line-marking machines bring to course management are compelling reasons for greenkeepers to commit increasingly to this technology.

GPS is transforming the world of line-marking with the Supaturf SWOZI line-marking system introducing heightened accuracy to one of the most fundamental groundcare duties.

Launched to wide acclaim at Saltex recently, the specially developed line-marking machine carries an onboard computer that can be uploaded with software for marking areas for whichever sports are required.

A GPS receptor positioned on the pitch talks to the onboard computer via Bluetooth, which triangulates Swozi's position with help from its own GPS unit, directing the line-marking machine to the appropriate line selected.

Deviation from the marking map by even a few millimetres triggers the head to adjust to maintain an accurate line. If the machine moves too far out of correct alignment, the computer tells the line-marker to stop spraying until the operator positions the machine to the correct marking pattern.

To view a video of SWOZI in action: <https://www.youtube.com/watch?v=ig3gQsDYCE8>

Leaving a lasting impression on

sports surfaces everywhere is the innovative Supaturf EvenSprey Club sprayer, geared up to deliver measured applications accurately and fuss free.

The TFS25 tank free system line-marking machine brings further convenience and refinement to marking out and is ideal for applying the Vitax Supaturf artificial paints range just launched.

Visit Vitax Amenity on Stand A2.

Stand contact: Mike King,
Sales and Marketing Manager.
www.vitax.co.uk

T: 01530 510060 E: info@vitax.co.uk



AVOID THE QUEUES - PRE-REGISTER FOR BTME 2016 - www.btme.org.uk

Being shown in the UK for the first time at BTME 2016 will be the latest addition to the Redexim Core Collector range. Designated the 1200SP, visitors to the Charterhouse Turf Machinery Stand (B48) will be able to see this alongside other popular Redexim and Graden machines and see how the Pedestrian Carrier can be a viable alternative power source.

The Redexim Core Collector 1200SP is a pedestrian machine to collect cores and debris. This new model features a 1.2m working width, increased hopper capacity and hydrostatic drive. Window boards at the front of the machine move the cores into a line, which is then presented to a stainless steel blade to scoop them up before a conveyor transfers them to a 0.3m³ hopper. The hopper is then able to be lifted to a height where the collected material can be tipped into a trailer or utility vehicle.

Another highlight will be the Redexim Pedestrian Carrier unit - introduced into the market place in direct response to the requirement to maintain surfaces, whilst keeping ground pressure and general traffic to a minimum. It is a pedestrian controlled, 3 wheeled hydrostatic implement powered by a 32hp V-twin petrol engine. It has a 3 point linkage, PTO and is capable of carrying lots of machines from the Redexim turf-maintenance range - a popular choice being the Verti-Drain 1513 high-speed aerator also on display.

In a sea of 'red' will be the 'green' Contour Sand Injector (CSI) unit from the Graden range of verticutters. This scarifier/aerator has the ability to scarify to any depth between 1mm- 40mm, whilst simultaneously backfilling the grooves with either sand or a combination of sand and seed. A one-pass operation means downtime is reduced without causing any detrimental effect to the firmness of the ground.

CHARTERHOUSE FIRST TIME VIEWING AT BTME 2016 - THE REDEMIX CORE COLLECTOR 1200SP

BTME
Stand
B48



NEW

BTME
Stand
A2

Supaturf® EVENSPREY CLUB



- **NEW** Anti-Flip Tank Stops
- **NEW** Improved Filter System
- **NEW** Storage Clip For Spray Boom
- **NEW** 25-Litre Tank With 20cm Lid And Filter. One Tank Treats 500m²

Supaturf is a division of Vitax Ltd. For more information
Call **01530 510060** or visit **www.vitax.co.uk**

HIGHSPEED GROUP TO LAUNCH NEW CLEARWATER PRODUCT AT BTME!

BTME 2016 should prove to be an even busier show for Highspeed Group Ltd as the company has chosen this important event to launch their latest ClearWater development at the show: ClearWater Commercial.

The original ClearWater biological washpad water recycling system was launched in 2003 designed primarily for washing turf machinery. The system has been further developed over time to become the class-leading system that it is today with hundreds of systems supplied, not only in the UK but exported too.

"The introduction of ClearWater Commercial takes this

popular system a stage further" explained joint MD David Mears. "ClearWater is excellent for washing turf machinery but we have been asked if we can provide a system that can also be used for high end vehicle washing too. This is why we've developed ClearWater Commercial."

The introduction of the new system will enable customers with a wide range of vehicles, other than turf machinery, to be able to achieve a very effective wash and finish and will open up new markets for Highspeed. The system has been successfully trialled over the past six months and with impressive results. ClearWater Commercial will be available alongside ClearWater. As David Mears said: "We will have two systems now, the cost effective ClearWater system so well-known for those needing to wash machinery and a more sophisticated system to wash minibuses, cars, pick-ups and other high-end vehicles, where a superior finish is required."

Alongside ClearWater, Highspeed is known for its "one stop shop" approach to

legislative compliance and will also feature fuel and oil tanks, waste management services, workwear, oils and lubricants at BTME.

Call at the stand C12 (same place – new number!), we look forward to seeing you.



NEW LINING METHOD BANISHES FLOODED BUNKERS

Bunkers are often the scourge of amateur and professional golfers alike and despite featuring on practically every golf course in the country the issue of finding a robust and long-lasting solution to bunker drainage has proved troublesome.

Tarmac's Topsport – in partnership with The Wisley Golf Club in Ripley, Surrey – has developed a unique engineered solution to bunker drainage and presentation, which prevents the appearance of puddles and unnecessary golf ball plugging. The solution involves laying a base layer of Topsport's modified porous asphalt 'Bunker Lining' straight onto the bunker's subsoil, and then topping it up with 100mm of sand.

The method has proven to be a great success, with

members at both The Wisley and Woodcote Park Golf Clubs immediately noticing the difference and commenting on how the optimised playing performance of the bunkers had significantly improved their chances of a clean strike off the sand, regardless of weather conditions.

Topsport's bunker lining has a host of advantages over alternative methods. Chiefly, as it avoids the use of chemicals, it can be laid in all weather conditions, meaning work can be undertaken during the winter months when courses may be closed or used less frequently.

A 50m² bunker can be lined in just two hours due to the improved drainage and subsequent reduction in standing water, a bunker's sand retention rate is much higher, even on steeper faces, as the sand is far less likely to clump

together.

Gordon Bell, BIGGA member and Course Manager at Woodcote Park Golf Club, added: "We've now rolled it out across 18 holes here and the feedback from members has been fantastic. The playability of the course is now much more consistent throughout the year."



BTME
Stand
A34

Talk to Tarmac's Topsport team about the new bunker lining product at BTME 2016 in Hall A on stand A34.

FOR MORE NEWS & UPDATES FOLLOW BIGGA ON TWITTER @BIGGALtd

All Washpad systems are not the same. . .
ClearWater - You don't have to see it to know how good it is!



- * Installation looks impressive - no unsightly containers and pipes!
- * Saves water by recycling and prevents pollution
- * Cost effective, safely below ground and silent

ClearWater
 Water Recycling Systems
 Sales & Service - call 0845 600 3572

Highspeed Group Ltd United Kingdom info@highspeed.co.uk www.clearwatertv.co.uk



EVERYONE WANTS TO PLAY ON THE FINEST SURFACES

Every sports person appreciates the true bounce and natural roll of a quality playing surface. That's why top sporting arenas, from leading golf courses to Premiership football clubs, specify Topsport.

Topsport supplies a premium range of rootzones, fibre reinforced loksand, drainage media and specialist sands for constructing and maintaining sports surfaces. Guaranteeing first-class service, technical support and national availability.

Topsport is the natural choice for high performance sporting surfaces.

0345 600 7704 TOPSPORT@TARMACBP.CO.UK WWW.TOPSPORT.CO.UK



YAMAHA GOLF CARS - DRIVING FORWARD

Yamaha have been one of the biggest suppliers of golf cars for many years and their G29 has become a familiar sight on many courses. 2016 sees many launches at Yamaha with the introduction of two new engines, the AC and EFI, and no less than five new vehicles from utility to luxury cars. So what can we look forward to?

EFI Engine - Yamaha have developed the first ever electronically fuel injected (EFI) engine in the industry making the experience smoother and quieter than ever and with the best fuel efficiency of any car on the course.

AC Engine - The new AC electric motor offers fantastic power and range on a single charge and is available in all Yamaha models. Creating 6.7hp you're guaranteed smooth acceleration, even up hills and the most powerful electric motor in the industry.

G29-PTV AC&EFI - When it comes to luxury cars, most are far from impressive, until now. With front and rear lights as standard the PTV is the ideal vehicle for guests to use after hours, extra touches such as the large alloy wheels let your guests know they've arrived.

YTF-2 AC&EFI - Whether you're moving supplies out to the back nine or just need a little more carrying capacity, the YTF-2 is the vehicle for you. It's equipped with a 360kg capacity tipping cargo-bed, enlarged transaxle and four-wheel drum brakes.

Super-Hauler AC&EFI - If you're setting up for a wedding or large golf tournament the Yamaha Super-Hauler can move mountains. Its super-sized 360kg aluminium cargo bed, heavy duty suspension and ever

reliable Yamaha engine makes the Super-Hauler a beauty when the job is a beast.

Concierge AC&EFI - It's important to make a lasting first impression when your guests arrive and the Concierge will do just that. Available with a range of seating and storage options (up to 6 seats), the Concierge is a smooth handling, comfortable, quiet ride.

For more details please contact will.scotson@yamaha-motor.co.uk or call on 01932 358095.



'NEW, NEW, NEW' IS DLF/JOHNSONS SPORTS SEED'S MOTTO AT BTME 2016



ProNitro®

Stand A20 will see a major launch of what is being considered as the next generation of seed technology, a new cultivar and a number of new mixture formulations.

The big news is the introduction of ProNitro – the latest seed technology development from DLF in their aim of delivering better quality results for Greenkeepers and Groundsmen alike. ProNitro will see the launch of a number of JNitro mixtures. This will promise even faster germination and establishment, faster leaf and root

growth and ultimately improved value.

Another announcement at BTME 2016 will be Nigella, slender creeping red fescue. This cultivar is ideal for use on tees and fairways, and has been rated as No.1 for tee and fairway renovation in the 2016 turfgrass seed booklet. It will be included exclusively in the Johnsons Sports Seed range for the first time in 2016.

DLF will also be announcing a number of new mixture formulations across the Masterline and Johnsons ranges, with the focus as ever on

further improving turf quality. To find out more about ProNitro and the other new products available, visit the DLF/Johnsons stand. The team will be able to offer advice on mixture selection or be on-hand to answer any other technical questions.

ProNitro®

AVOID THE QUEUES - PRE-REGISTER FOR BTME 2016 - www.btme.org.uk

Global Turf UK



YOUR TRUSTED SOURCE FOR TURF EQUIPMENT THROUGHOUT THE UK

**12
Months
FREE
Interest**

Ask for details

**BTME
SEE US ON
STAND C42**

A viable financial alternative

to buying, depreciating new equipment

Why not look at pre-owned?

**BUY NOW
PAY LATER**
6 Months Deferred

Sandbeck Lane, Wetherby, West Yorkshire LS22 7TW. United Kingdom

Telephone: +44 (0)1937 581111

Email: info@globalturfequipment.co.uk

www.globalturfequipment.co.uk



WHAT IS ProNitro®?

#whatispronitro

HEADLAND TO SHOWCASE TWO NEW PRODUCTS AT HARROGATE

At BTME 2016 Headland Amenity will be showcasing two new products. Visitors will be able to see Terafirm, a new technology, soil penetrant product, as well as the latest addition to the C-Complex range of fertilisers: C-Complex Sport.

New Terafirm is a soil penetrant formulated to improve the downward movement of water through the soil, helping to achieve a firmer playing surface. Taking its name from the Latin terra firma (firm earth), Terafirm works by reducing the surface tension of water, minimising lateral water movement and facilitating drainage. Terafirm also acts to speed surface drying and open up pore space within the soil during dry down by accelerating natural soil contraction. Its unique non-phytoxic formulation helps to bring soils to optimal field moisture capacity, enabling downward water movement as quickly as the soil's physical properties allow. This helps to reduce puddling and anaerobic conditions, and produces a faster-draining, drier and healthier sward.

C-Complex Sport 14-2-5+MgO is an outfield fertiliser designed for use on coarse turf areas such as sports pitches, golf tees and fairways, racecourses, lawns and general amenity turf. The homogenous, regular granule breaks down easily and is formulated to provide good growth even at low soil temperatures. Just like the highly successful C-Complex fine turf range, C-Complex Sport is formulated using Naturvigor, a combination of aerobically-composted cow manure and high levels of humic acid.

Both C-Complex Sport and Terafirm will be shown alongside a range of Headland's innovative turf nutrition, health and management products on their stand in a new position in Hall B (B39).



BTME
Stand
B39

STOP FOR A SARNIE WITH KUBOTA AT BTME 2016!



BIGGA Partner Kubota are kindly offering complimentary bacon sandwiches and tea or coffee on the first two mornings of BTME 2016!

Visitors to their Stand – Q22 – will be able to claim a voucher for free food and a drink on both Tuesday and Wednesday morning of the show, but get there quickly as they are available on a first come first served basis! Visitors will then be able to redeem the voucher at the various catering points in the Harrogate International Centre.

JOIN THE CLUB CAR AT BTME 2016

Club Car are preparing to showcase a range of fantastic small-wheel vehicles ideal for the golf market on Stand A6 at BTME 2016.

The manufacturer, who are a brand of Ingersoll Rand, will be bringing a Carryall 300, a Carryall 500, a Carryall 700, a Transporter vehicle and a golf car to the exhibition.

Club Car will showcase the new range of Carryall utility vehicles and technical advances including the Precedent i3, a unique golf car with built-in connectivity as a standard feature, and the Visage, a unique mobile golf information system.

The recently refreshed range of Carryall utility vehicles feature a new look, better comfort and the new E.R.I.C. on-board charger with improved peak efficiency of 93%. The redesigned, modular integrated cabin that sits flush on the vehicle allows customers to build up their own vehicle including the cabin and utility section. For further improved ergonomics, the entire range is available with the new VersAttach bed-based attachment system to fix tools such as hedge trimmers and leaf blowers to the rear cargo box. VersAttach

can easily be configured for specific jobs in virtually all applications or quickly removed when not needed.

Featured at the stand will be the new Subaru 404cc overhead cam engine with electronic fuel injection (EFI). The new engines boost horsepower by 30% and fuel efficiency by as much as 50% over previous Carryall utility vehicle engines contributing to improved reliability and reduced maintenance costs.

"We work closely with our customers and see that in today's economy and fluctuating budgets, they are constantly being asked to do more with less. Our new range of Club Car Carryall vehicles has been designed to do truly more: hauling, transporting crews, maintenance jobs while saving operating costs, time and money with improved efficiency," said Dennis de Roos, utility sales director for Europe, Middle East, India, and Africa at Club Car. "We see the new Carryall as the one utility vehicle that can tackle a thousand jobs and this is just part of our customized solutions portfolio."

Visitors to the stand will also be able to experience the fully 'connected' Precedent i3 golf car, designed to allow customers to decide how many of the connected features they want to add to their fleet starting with simple diagnostics, all the way up to the integrated Visage information system.

"Connectivity affects every aspect of our lives and at Club Car we have always aimed at being pioneers in delivering products that enhance our customers operations and improve their profitability," said Kevin Hart, sales director Golf for Europe, Middle East, and Africa at Club Car. "This approach is reflected in the Precedent i3 and in the Visage system, which heightens the golf experience for players and gives the golf course managers complete control over their fleet and operation from most mobile devices."



The Grass Group

Britain's premier turf care and management
equipment supplier



www.thegrassgroup.com Call 01638 720123



Affordable Quality



SEE US AT BTME HALL Q
Stand Q22

2 YEAR WARRANTY AS STANDARD+

+ Conditions apply to 2nd year see dealer for details

Find your local dealer today Call: 01844 873 156
or visit www.kubota.co.uk/dealers

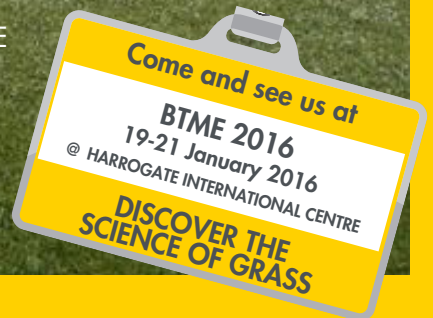
For Earth, For Life
Kubota

YOU HAD ME AT QUALITY GRASS SEED

BAR RANGE

Some grass seed has that little something extra. In the case of BAR RANGE it's quality grass seed developed by Barenbrug and designed for golf courses and greenkeepers.

Add to this, superb performance and listings on BSPB Turfgrass Seed 2016, it's no wonder BAR RANGE is as demanded by top greenkeepers as it is.



Contact your local distributor
01359 272000 | barenbrug.co.uk | info@baruk.co.uk



Waste2Water

Recycling Wash-Off System
for Vehicles & Equipment

BTME

Stand
B46

Visit us at **BTME**
and find out why
we are the **No. 1**
Wash Off System!!!

Reduces water usage by 90% and
qualifies for 100%
FYA tax allowance
under the ECA
Scheme



AUTHORISED
USER NO. 01368

ESD Waste2Water Europe Ltd,
102A Longton Road, Barlaston,
Staffs, ST12 9AU, England

Tel : 01782 373 878

E-mail: info@waste2water.com

Web: www.waste2water.com



BTME

Stand
B46

SURGE IN DEMAND FOR WASTE2WATER!

"We've never been busier with record numbers of golf clubs installing our Waste2Water Recycling Wash-Off Systems in 2015", commented a delighted Tim Earley, Managing Director. If you've not already done so, upgrading your wash facility should now be an urgent priority to ensure compliance with the new EU Water Framework Directive. If you are planning to upgrade your wash facility we will be delighted to invite you to STAND B46 to view our system on show and see why we are the clear no.1 choice in the UK. The Waste2Water Recycling Wash-Off System ensures full compliance with the new environmental legislation and reduces water usage by around 90% too! The Above-Ground System allows easy maintenance and the innovative design enables the system to be installed outside and used all year-round without the risk of freezing. There is no need to install the systems in a building or a container and there are no underground tanks to empty and maintain either. Installation could not be easier, often retro-fitting into an existing area to minimise the budget. And don't forget, the Waste2Water Recycling Wash-Off System is approved on the Water Technology List (WTL), which allows a 100% First Year Enhanced Capital Allowance (ECA) to be claimed. It sounds a bit complicated but rest assured your accountant will be delighted!

Our installation team will be delighted to arrange a free site survey and supply all the knowledge, expertise and equipment you need. We can provide everything up to a complete 'turnkey' package including wash pad modification/construction and with a range of systems available from one hose - four hose we've got the system for you! We look forward to seeing you on our Stand, or if you can't make it to BTME this year just give us a call!

BTME 2016 - STAND B46

Contact Tel: 01782 373 878

Email: info@waste2water.com

AVOID THE QUEUES - PRE-REGISTER FOR BTME 2016 - www.btme.org.uk

The Professionals of Turf Irrigation

Thank you !

Recent and ongoing projects

BR- Olympics 2016, Rio de Janeiro
CH- Golfclub Sempachersee, Hildisrieden
D- Golfpark Hufeisensee, Halle/Saale
F- Racetracks St. Cloud + Auteuil, Paris
GB- Charlton Athletic training fields, London
GB- Droitwich Golf Club, Worcestershire
GB- Wolverhampton Wanderers FC
GB- Bath University Hockey Pitch
PL- Opolski Golf Club, Krapkowice
RU- Gazprom Arena (World Cup 2018), St. Petersburg
RU- Fisht Olympic Stadium (World Cup 2018), Sochi
S- Kristianstads Golfklubb, Åhus
Z- Bonanza Golf Course, Lusaka



HYDRA - series



VP3 - series



LVZ- series

www.perrot.de



**See you at the BTME-Show !
19-21 January 2016
Booth C2**

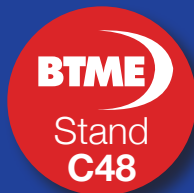
Complete Grounds Maintenance Launches

Complete Weed Control has launched a new service – Complete Grounds Maintenance. The new service promises to deliver a comprehensive range of grounds maintenance services on a national scale.

The launch means that customers can have just one supplier for all of their grounds maintenance requirements - simplifying the headache of managing outside spaces.

Local authorities, industrial premises, forestry sites and sporting venues will now all be able to benefit from Complete Weed Control's all-encompassing services, which include:

- Grass Cutting
- Selective Weed Control
- Total Weed Control
- Grass Growth Control
- Invasive Weed Control
- Moss Control
- Shrub Pruning
- Winter Maintenance
- Litter Picking
- Baseguard



The launch of the Complete Grounds Maintenance service will come as welcome news to those that have to search for various contractors for individual services; a task which can be time consuming and often very expensive. In fact, many of the Complete Group's operatives are already undertaking these services on a regular basis as they continue to go above and beyond the call of duty. With this in mind, it made total sense to form Complete Grounds Management according to managing director Ian Graham:

"A lot of our operatives are already doing work that isn't necessarily just weed control. Many of our customers are already benefiting from a number of additional services such as clearance, repair works to gates and fences, grass cutting and pruning etc.

"Now is a great time for growth and we are responding to this by formalising our offering of new services.

The complete solution...

Japanese Knotweed Specialists

Complete Weed Control are proud of the fact that for the last 40 years we have offered a specialist contract service for the eradication of all problem weeds.

Our clients include government departments, local authorities, public utilities, golf courses, amenity leisure areas as well as commercial sites.

For a complete solution, call the longest established amenity weed control company in the UK and Ireland.

We do...

- Total weed control
- Selective weed control
- Aquatic weed control
- Disease control
- Grass growth control
- Insect control
- Fertiliser application
- Moss & algae control
- Worm control
- Forestry
- Urban tree protection

Local help from a national company

complete weed control

For a complete solution, contact

0800 783 2884

www.completeweedcontrol.com

"We wanted an all-round solution where we've got a service provision covered from top to bottom. We now have this with Complete Grounds Maintenance."



Find out more by calling Complete Grounds Maintenance on Freephone 0800 031 6633 or visit www.completegroundsmaintenance.co.uk

FEATURING

- 3 Year Warranty
- Kerb Jump
- LazerBladez™

Full Width Rollers
Up to 50hr PTO
Greasing

Scan the QR code to view the Snake video.

Visit us at BTME on Stand B59

Call us on 01933 652235 or see our website for a dealer near you!
www.trimaxmowers.com

FOR MORE NEWS & UPDATES FOLLOW BIGGA ON TWITTER @BIGGALtd



OVER 120 EXHIBITORS FROM ACROSS THE INDUSTRY



THE BIGGEST EVER OFFERING AT CONTINUE TO LEARN



BIGGA PRESENTS BTME 2016 INCORPORATING C2L & GOLFBIC AT THE HARROGATE INTERNATIONAL CENTRE
 CONTINUE TO LEARN 17-20 JANUARY 2016
 TURF MANAGERS CONFERENCE 18 JANUARY 2016
 BTME 19-21 JANUARY 2016
 GOLFBIC 20-21 JANUARY 2016



Visit btme.org.uk and click Register Now



BTME Stand A31

swangolfdesigns

INTERNATIONAL GOLF COURSE ARCHITECTS

GOLF COURSE DESIGN AND RENOVATION

www.swangolfdesigns.com
enquiries@swangolfdesigns.com
 +44 (0) 1728 727006

GREENTECH POGO IN TO BTME!

2015 has been an exceptional year for Greentech, which will conclude with our stand at BTME 2016. With expansion into Southern Ireland, the employment of an extra contracts team including 2 new Modern Apprentices and the recruitment of a new Area Sales Representative, the company is growing in the right direction.

One of the great success stories of 2015 has been the POGO, the all-new moisture reader that's the talk of the industry and currently being used by St Andrews, Gleneagles & Chelsea FC. This portable cloud-based sensor uses built in Wi-Fi to connect to your own telephone or appliance, allowing you to take turf and soil measurements anywhere and at any time. To find out more, come and listen to Carmen Magro of POGO who will be doing a talk at the BTME Continue to Learn Seminar, on Tuesday, 19th January at 10.00 a.m.

Also at the exhibition, we will be showcasing The Andersons Fertiliser range including the impressive Humic DG range, and as representatives for Floratine and Headland in Scotland, we have a range of excellent products to give the strongest turf. Barenbrug RPR Stadium is an exciting new grass seed, scientifically developed for incredible wear tolerance and fast recovery and recently used with great success at Heart of Midlothian FC. VinylGuard is another interesting product that saves money whilst giving golf flagsticks, hazard stakes and bunker rakes a new lease of life.

Greentech also has an excellent reputation in the field of sportsturf design, construction, renovation and maintenance, having worked on premier Scottish football pitches such as Hampden Park and Partick Thistle, and iconic golf courses such as Royal Aberdeen and Gleneagles.

We are currently looking for UK Distributors of The Andersons, POGO and Vinyl Guard so for further information and a confidential discussion, contact ian@greentechsportsturf.co.uk or visit us on Stand B20 at BTME 2016. www.greentechsportsturf.co.uk



Greentech
Sportsturf

Greentech is one of the UK's leading sportsturf contractors and suppliers of quality turf products.

Working closely with the market leaders in our profession, we seek UK distributors for:

- The Andersons fertilisers
- POGO
- Vinyl Guard

For more information and a confidential discussion, contact us at info@greentechsportsturf.co.uk

or visit us on Stand B20 at BTME 2016

www.greentechsportsturf.co.uk



The way of winter



Dr Andy Owen and Henry Bechelet, Technical Managers at ICL (formerly Everris) focus on turf management techniques as the temperatures plunge after an exceptionally mild autumn

Fine turf management is always challenging during the winter, especially in northern Europe. Through autumn the days shorten, temperatures drop and turf growth slows down. At this time the damp conditions usually wake the fungal diseases to bring the potential for havoc. Play usually continues on the greens whenever they are available and so the pressure mounts.

Winter is the time when it could all go horribly wrong but with considered and careful handling we find that it is possible to get through. The golfers might even have some fun. Miracles do occur sometimes.

Because turf vigour declines on the way to winter it is important that we prepare in advance to create a system that is able to survive the rig-

ours of play and the wider environmental pressures without any recovery growth. We deploy management strategies that are designed to sustain turf health and reduce the risk of damaging disease attacks whilst still creating decent playing surfaces. This might be achieved with long-term strategies to maintain drainage and keep the soil healthy (ongoing soil organic matter management, aeration and drainage) or more immediate measures designed to sustain turf health (nutrition programmes, the use of turf hardeners and fungicides). There are a multitude of measures that we can employ to help us prepare for the winter but it doesn't stop there. We must continue to proactively manage the turf during the winter. Hibernation is not an option.

We would say that the key areas to focus on during the winter are:

- Soil profile aeration and drainage
- Surface moisture removal
- Sustenance of plant health with appropriate nutrition
- Protecting the plant against disease attack

An aerated soil is all-important to maintain a healthy functioning system. We would advocate aeration treatments whenever necessary to maintain an open and aerated soil structure. We don't think that you should spike for the sake of it and you should only choose to aerate if surface/soil conditions are suitable. However, if the soil is poorly drained, thatchy and becomes stagnant in wet conditions then you have some work to do with drainage and



Fine turf management assessment diagrams

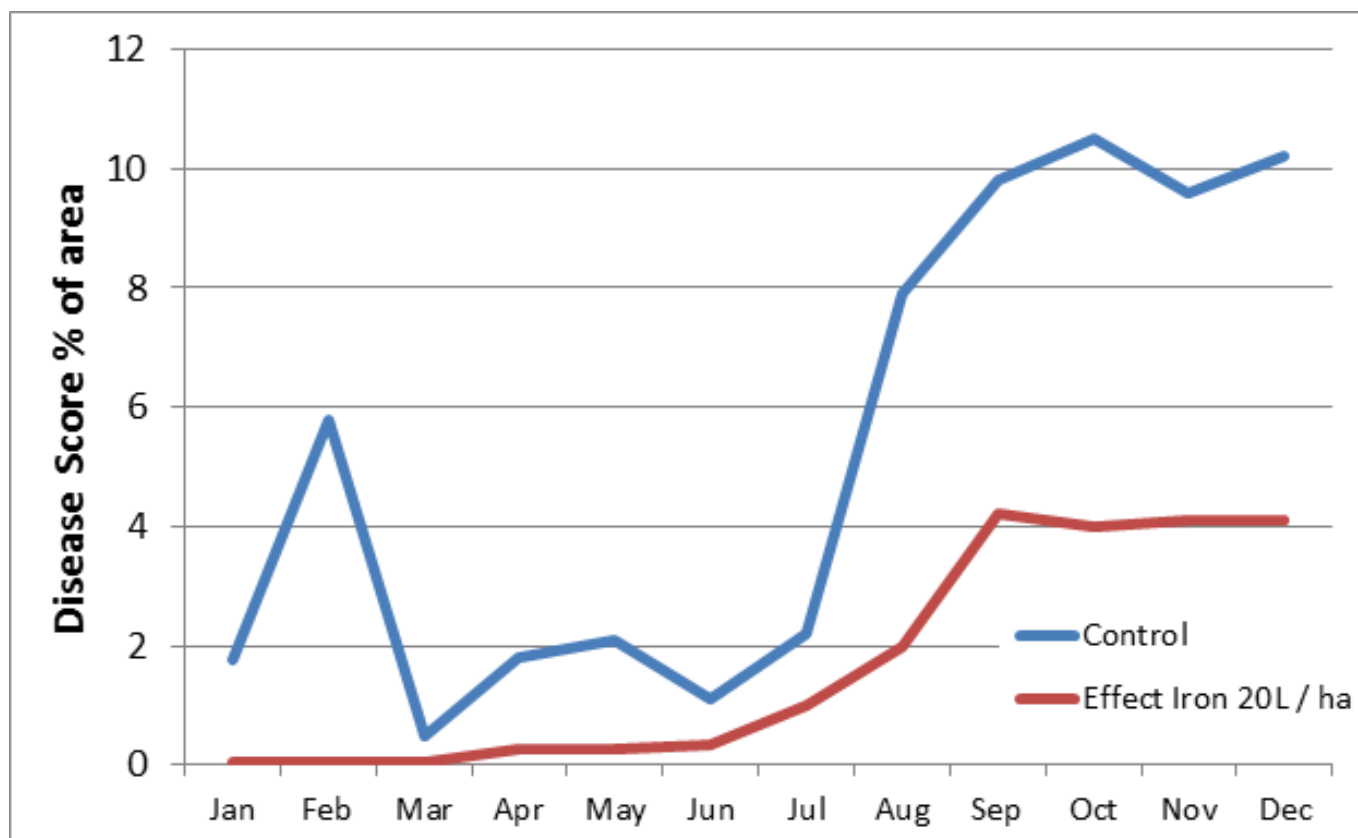


Figure 1: Percentage disease on fine turf plots. Effect Iron treated vs Control. Showing significantly ($p < 0.05$) less disease on Effect Iron treated plots in February, May and August through to December.

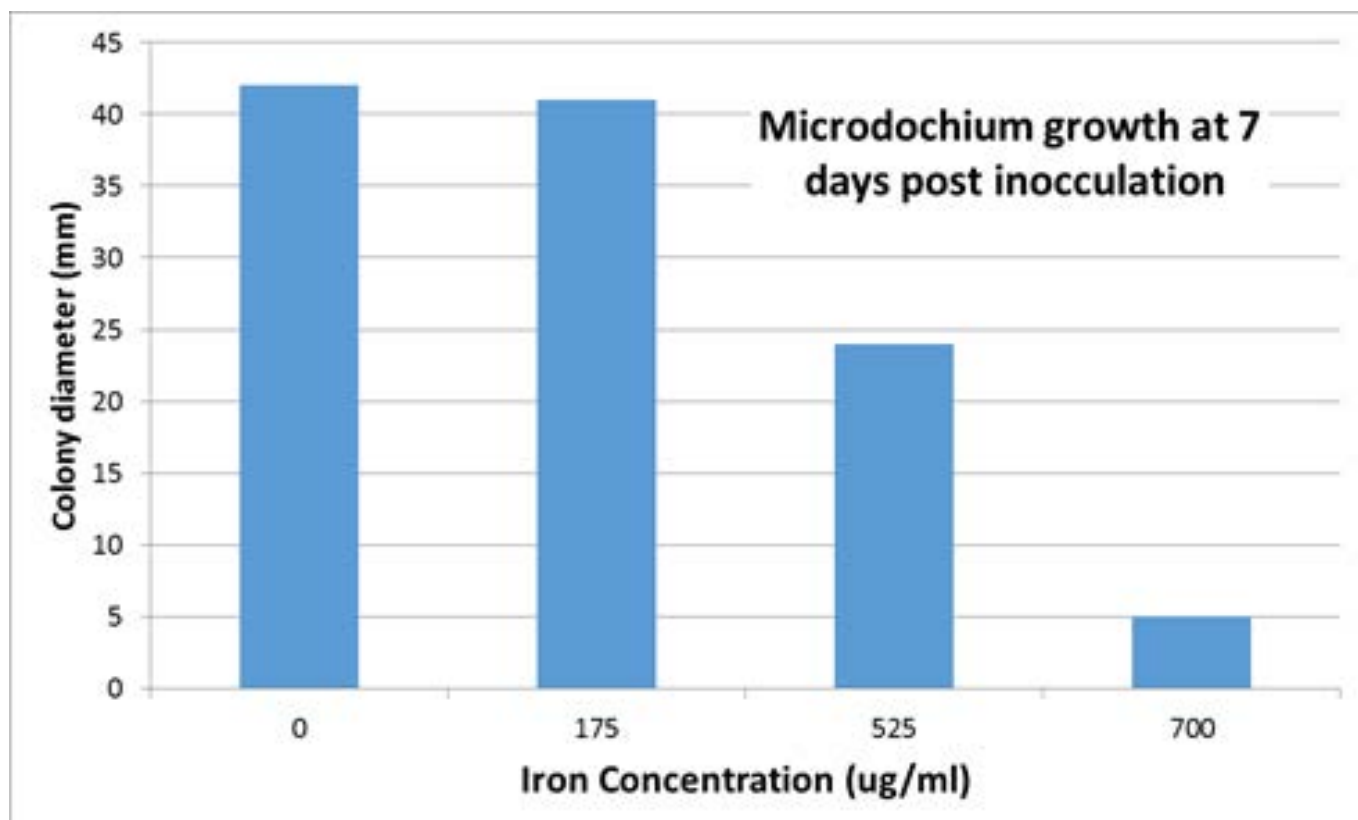
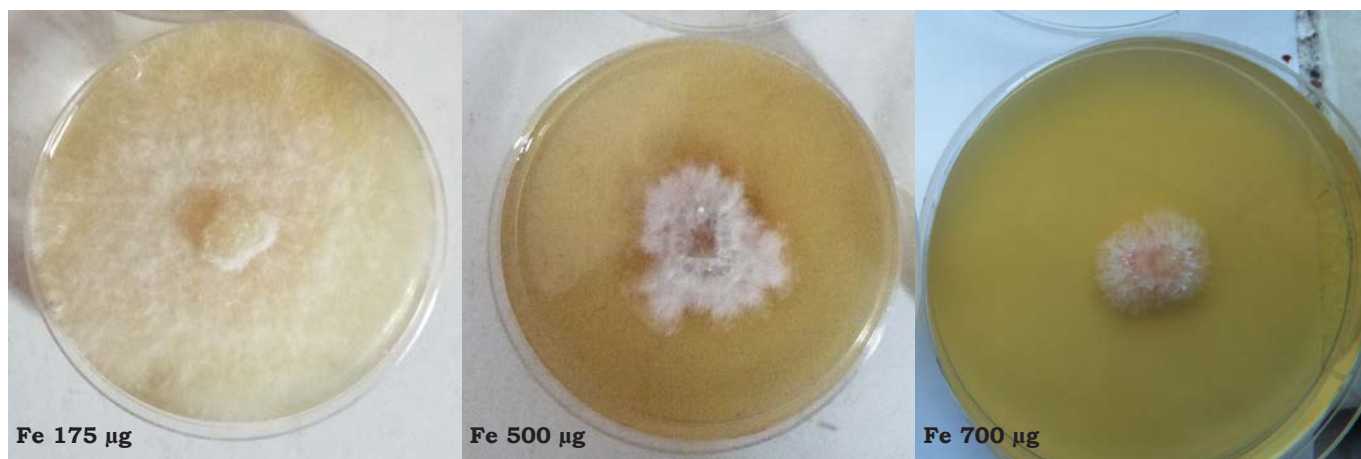


Figure 2: Microdochium nivale colony diameter after seven days. Showing significantly reduced ($p < 0.05$) colony diameters at higher iron concentrations.



Picture 1 (above)

organic matter reduction. This should be a key focus for your annual management plan. Moisture probes can be very persuasive tools during the winter if you need to explain the situation in simple terms to your paymasters.

Surface moisture removal is also a crucial issue. When the turf canopy remains damp for sustained periods the turf health can become compromised and disease activity encouraged. Keeping the leaf as dry as possible by brushing and switching, or using a well formulated dew dispersant product such as the ICL H2Pro DewSmart, along with shade reduction and improving airflow are key strategies to employ. Penetrant wetting agents such as H2Pro Maximise are specially formulated to move surface water down through the soil profile as long as drainage is available, which can be a real help.

A key element of your integrated turf management approach during winter would be to maintain turf health with nutrition without creating unduly lush growth. If soil temperatures are still above 10C the grass plant will respond to a late season application of a slow release nitrogen source to assist with maintaining plant health through the winter.

You might aim to apply in the region of 1kg of Nitrogen per hectare per month if conditions permit (with additional potassium and phosphate if soil sampling deems necessary). This would equate to

an application of Sierraform-GT K-STEP (6-0-27 +2MgO +TE) at a rate of 15-20 g/m² or Greenmaster Prolite Invigorator (4-0-8 +2MgO +4Fe) at 25-30 g/m². Check out our latest user guide for information on the Nitrogen sources and release patterns of our fertilisers.

It is also important to apply what we call 'turf hardeners' during the winter. One nutritional element which can support an integrated approach to disease management is Iron. When applied in a chelated form, Iron is more readily available for plant uptake than when applied as an inorganic compound (Iron sulphate). Greenmaster Liquid Effect Iron (6.3 % Fe), the ICL complexed and chelated iron has been shown in independent trial work to significantly reduce the impact of *Microdochium nivale* outbreaks (Figure 1) on a fine turf surface.

Effect Iron has also been shown to have the fungistatic effect of reducing fungal growth in a laboratory petri dish study (Picture 1). The agar petri dishes were dosed with Effect Iron at a range of concentrations which was then inoculated with a plug of *Microdochium nivale* and kept in optimal conditions for fungal growth. The subsequent daily growth and expansion of the fungal plug was measured. What became clear was that the Effect Iron significantly reduced the fungal growth at greater than 500 µg/ml in comparison with a control (Figure

2), reinforcing the proof that Effect Iron is effective at assisting plant health within an integrated disease reduction strategy.

The understanding and selection of appropriate fungicide technology should also play a part in your integrated winter management. At this time it is important to choose the correct fungicide active ingredient and mode of action that would be effective in cooler conditions. For instance, MedallionTL from Syngenta contains Fludioxonil, which is a contact active ingredient that works on the leaf and in the thatch and soil to inhibit the development of the pathogen and protect the turf from infection. This is best applied preventatively and has been shown to provide outstanding levels of long-lasting control during the winter.

So, the production of turf that is able to perform throughout the winter without undue deterioration requires us to focus our management on the rootzone, the leaf, the plant health and on disease pathogens. If we take a fully integrated approach and focus on 'getting everything right' then (with a little luck) we stand a chance of making it through. Winter is a tough time and it can sometimes get the better of our turf but it can also provoke us to improve our methods (and products) and really focus our management plans. That is the way of winter – it forces us all to become better at what we do.

TORO

The Toro® ProCore Series

Total Aeration

**The Toro ProCore aerator series.
The complete choice for the perfect finish, everywhere.**



**TORO
Triple
Finance is
BACK!**

THE PROCORE 1298 FOR LARGER AREA AERATION

No matter where – healthy turf starts down at the roots. That's why Toro developed the complete range of walk-behind, tractor mounted and deep tine aeration products, giving you the machines to professionally aerate your turf from tee to green.

Toro know regular aeration relieves soil compaction, increases drainage and promotes deeper root growth for vigorous, and healthy turf. And with years of research, customer input, testing and unrivalled attention to detail – the expansive Toro ProCore aerator series is the most productive and efficient on the market. So whatever the application, the ProCore series from Toro ensures your course maintains a perfect finish.

Full product details at www.toro.com

Put us to the test. For a free onsite demonstration, call Lely on 01480 226800

**FINANCE
AVAILABLE***

**Buy sooner
Pay much later!**

**CALL 01298 766191
FOR MORE INFO**

*Buy November 2015 and pay September 2016, buy December 2015 pay August 2016, or buy January 2016 pay July 2016. Terms and conditions apply. Finance is for business purposes only and is subject to acceptance. UK only. For a limited period only. Available on all Toro Commercial machinery. Includes listed accessories on new machines. Terms current at date of publication.



PROCORE 648



PROCORE 864



PROCORE 1298



PROCORE SR54-S



PROCORE SR72



OFFICIAL
SUPPLIER

Lely. Your partners in turfcare. Call 01480 226800.

Lely not only brings you Toro. Talk to us, too, about TYM compact tractors and Otterbine water management systems.



partners in turfcare

An Old Course... with a new beginning

Two years ago Chipping Norton Golf Club in Oxfordshire was purchased by a property developer and golfing enthusiast and rebranded as The Cotswolds Club. Laurence Pithie MG spoke to Course Manager Neal Carter to find out how this major change has impacted the greenkeeping team and the course

Chipping Norton Golf Club, the oldest club in Oxfordshire, was formed in 1890 when nine holes were laid out on 35 acres of common land close to the town: the 40 or so members enjoyed their golf for just ten shillings – 50p! The club relocated to its present site in 1907 when a group of existing members produced a new nine hole layout in exchange for an annual rent.

After being ploughed up for cereal crops in WW2, the course was seeded in 1948, albeit in a revised layout. However, it wasn't until 1985 when an additional 52 acres of adjacent land was purchased for £72,000 that another nine holes were constructed. Ted Roberts, ex-Head Greenkeeper from nearby Burford Golf Club helped in the design, with local irrigation and drainage contractors BA Hull completing much of the groundwork. Interestingly, when the full 18 holes were open for play, annual subscriptions were £200.

The purchase of a further 35 acres of land in 2005 with a view to installing a driving range and a three hole academy failed to materialise due



to the lack of available infill material when the recession took hold. This led to financial difficulties with debt repayment coinciding with declining membership numbers. As a result, the club was put up for sale in 2012. The following year the club was under new ownership with all previous debt cancelled. This heralded a new beginning and an opportunity to start afresh.

The Team

To gain an insight into how the various changes have impacted course maintenance, I met up with Adrian Ludlow who has been an assistant at the club for 40 years.

Adrian said: "After leaving school in 1975 aged 16 with a few GCEs, my aim was to work in either agriculture or horticulture but opportunities were scarce and I was offered a two week trial at the golf club. I was never officially offered the position as an assistant, but 40 years on I am still here so I guess I must have been accepted!"

"For a nine hole course with just myself, the Course Manager and almost 400 members, we were fairly well

mechanised at that time and benefitted from one of the first automated irrigation systems in the region.

"Greenkeeping was fairly basic with greens cut three times each week at 5mm, aerated twice a year and top dressed manually by mixing sand and loam twice annually. For worm, weed and disease control we used Sydane, Supertox and Maysan respectively, the former every three years and the fungicide containing mercuric chloride once. Worms, weeds or fusarium were not an issue after these applications but little thought was given towards environmental factors then. For greens fertiliser, it was a case of two applications with Fisons Greenkeeper.

"The team increased to five when the course was extended to 18 holes. Since 1975, I have served under five Course Managers, all different characters and with different skills, and seven secretaries or managers, so not too many changes.

"A more noticeable change has been the structure of the club. Originally there were five committee members running the club, whereas by 2012 there were at least

Just because it looks okay doesn't mean it is!

Redexim and Graden original parts are made to fit correctly and will save money long term.



Charterhouse TURF MACHINERY

www.charterhouse-tm.co.uk | 01428 661222



See us at BTME - Hall B - stand 48



Neal and Adrian

six different committees involving at least 30 members including one for wine selection. In terms of greenkeeping, there have been tremendous advances in training, products and technologies along with greater environmental sensitivity. The intensity of maintenance to deliver higher standards and meet higher expectations has been the greatest change’.

The New Beginning

When the course was purchased in July 2013 by Glucka Wijesuriya, a lawyer, keen golfer and businessman, it was clear that other revenue streams were required if the club was to remain financially viable. To retain the existing membership, the quality of the course and facilities had to be as good a standard as possible.

The person tasked with achieving these standards is Neal Carter, who is currently enjoying his second stint as Course Manager. Neal explained: “In 2007 I was keen to move away from the south east where I had spent the previous nine years working for a large management company. The opportunity

to work in the Cotswolds on an interesting course was too good to turn down.

“However, by 2009 it was clear that the club’s plans for expansion were diminishing, while budgets were being tightened. Aged 44, I decided to become self-employed and follow the route that a couple of ex-colleagues had taken by purchasing a franchise within a lawn maintenance company. This worked well and allowed me to broaden my skills on both turfgrass and landscape management.

“Following the purchase of the club in 2013 I was asked by the new owner to support the existing greenkeeping team on a part-time basis while continuing with landscaping work on alternative days. The difference this time was that the owner had a clear objective of what he wanted to achieve both on and off the course and had the means to do so.

“For me the first priority was to raise the quality of the course by providing members and visitors with excellent playing surfaces and presentation throughout the year. Although staffing levels have remained the same; namely four full time staff





plus myself, I had the means to deliver what the owner expected.

“The next phase was investment in a 34 bedroom hotel and a function facility which will improve the viability of the business by offering golfing breaks, corporate days, weddings and other functions. The hotel will be fully operational by the end of 2015. This is a long term project but will help to ‘winterise’ the business, diversify revenue streams and ensure that income is sufficient to support continued development of the golf course.’

Course Detail and Working Progress

So what changes have taken place on the course, and what methods have been used?

Neal explained: “The position of the new hotel necessitated the relocation of the 9th green complex and the building of a new tee to compensate for the slight loss of distance. Both are now in

play following construction earlier this year. In addition the first tee has been altered along with a new putting green.

“Other design changes are planned to expand and improve the course, and golf course architect Simon Gidman is on board to help us fulfil our objectives. In the meantime the emphasis is on turf quality, playing performance and presentation which are important to our members and guests.

“For me this is all about getting the fundamentals of greenkeeping in place and that starts with ensuring the right environmental conditions are in place for producing firm and healthy turf.

“The course has an elevation of over 700 feet on a rolling Cotswold landscape with a limited depth of soil. We drain very well but can also dry out equally as quick. Poa annua is the dominant grass throughout the course; it has been for at least 40 years and probably will be for the next 40 years; therefore it needs



Neal, Adrian and the club captain honour Adrian's 40 years of service



to be managed accordingly. Our key practices are regular aerification, weekly light top dressings, moderate fertiliser usage and regular use of a PGR on most playing areas. This allows us to produce a dense, healthy turf with limited organic matter content.

“Disease risk is relatively low but our main challenges come from creatures that can dig or burrow; rabbits, foxes and badgers being the main offenders. Worm control and clearing leaves are seasonal challenges but I am fortunate to have an experienced staff who can carry out most tasks and have a strong passion to make the course the best it can be.”

The Future

Under the new ownership, membership numbers have stabilised, visitor numbers are increasing and investment is clearly evident on the all-important ‘first impressions’. Recent history has proved that in this area, a ‘stand alone’ golf club is a tough financial challenge. Therefore, providing a golf club and hotel offering diverse and excellent facilities is a positive step forward in expanding its customer base. An attractive and well managed golf course, fully playable all year round and one which can cater for all categories of golfer, will give the club the best opportunity for success.



We're 'Appy and we know it

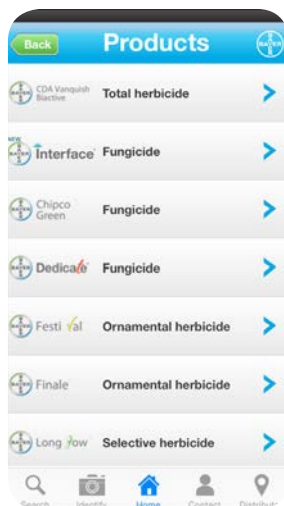


In the busy greenkeepers schedule, the use of mobile apps to aid identification can be a helpful tool when there are increasingly more diverse signs to look out for that appear during uncharacteristic times of year.

With unpredictable weather patterns, greenkeepers have to be on their toes when it comes to identifying pests and diseases, appearing later and later into the winter months, and typical windows for development are not necessarily strictly accurate.

The mild weather during this November, for example, where temperatures reported were 20 degrees in the day yet minus three on the same night, shows how conditions conducive to diseases such as anthracnose are appearing later than usual.

According to Dr Colin Mumford from the Bayer Turf Solutions team, he visited a



golf course during early November that was smothered in anthracnose. "Usually you would expect to see anthracnose developing late summer or early autumn, but when we're experiencing these mild temperatures, the disease is occurring later and later."

Anthracnose, foliar blight and basal rot, caused by *Colletotrichum* spp, are primarily diseases of annual meadow grass (*Poa annua*) under stress conditions. "The disease is most common on golf greens and over the past two years, there seems to be more cases of the disease in late autumn or early winter," He says.

The first stage of the disease appears as foliar blight, where the leaf itself loses its green colour. The leaves typically turn yellow, and young leaves can actually turn red.

"Foliar blight develops on older leaves first, and is most

common in the summer. Often foliar blight can be mistaken as drought stress, and greenkeepers respond by applying water. Be careful, as this develops favourable conditions for the disease. It's best to diagnose early and alleviate the stress conditions.

"Basal anthracnose (or basal rot) can develop from foliar blight or independently during periods of cooler, wet weather. Since it often occurs when turf growth potentials are low, recovery from anthracnose can be difficult," says Colin.

"Other less reported diseases are fast becoming common place, like cool season brown patch, which was virtually unheard of 15 years ago in the UK. There's no data to associate it with changes in weather, but an increase in its occurrence does seem to correlate with wetter summers and warmer winters."



Excellent disease control and improved plant health



Interface[®]

with  **StressGard**[™]
FORMULATION TECHNOLOGY



Turf
Solutions

Backed by **Bayer**

Interface[®] with StressGard[™] Formulation Technology can help improve turf quality under conditions that promote Microdochium patch, commonly referred to as fusarium.

Microdochium patch is the most common turf disease in the UK and Ireland. Interface[®] with StressGard[™] Formulation Technology can be effectively applied to prevent, cure or eradicate Microdochium patch, dependent on the stage of development, as well as improving plant health.

Contact the Turf Solutions team to find out more about the benefits of Interface[®] at turfsolutions@bayer.com or on **00800 1214 9451**.



According to Colin, while we don't currently see many cases of it, with the changes in climate that are occurring now we can expect to see more of these types of diseases. "We can anticipate that we may even experience diseases in the future that are associated with warmer climates than ours, diseases which we have never had to worry about before," says Colin.

"If things keep progressing, we may have issues with really uncommon diseases such as Pythium for instance," he says.

Misdiagnosis of diseases can be devastating, says Colin. "Early anthracnose can be misdiagnosed as drought stress, and summer diseases like yellow tuft can look like turf stress. When greenkeepers apply water and fertiliser to turf that looks nutritionally deficient, but is actually diseased, it might feed the problem, intensifying it to a

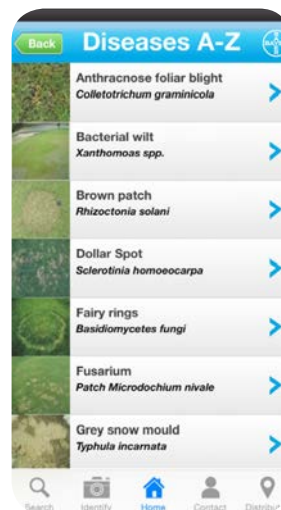
level that's hard to treat.

"It's important to look at historic data and also to be aware of conditions that are conducive to disease to keep the turf as healthy and stress free as possible," he says.

Microdochium patch, commonly referred to as fusarium, can appear at any time of year. The risk is heightened with prolonged wet weather and it's a key disease to look out for during the winter months.

"If there's a significant snow cover forecast, then a preventative spray of a fungicide treatment will help the plant to fight off potential disease outbreaks while the turf is under the cover of snow," says Colin.

"Turf stressed by snow, particularly if not already in a healthy state, is more susceptible to fusarium and pink snow mould. A preventative, rather than curative, approach will place you in a bet-



ter position come spring.

"Yet, if a light snowfall is predicted, for example no longer than 24 hours, then a fungicide may not be required. It all depends on the health of the turf at that time. A greenkeeper's knowledge of how their turf reacts to specific weather conditions will help determine the best course of action.

"The job for a greenkeeper is getting harder, because there are more sporadic appearances of turf diseases, and less actives to control them," says Colin.

Interface® with Stressgard™ Formulation Technology, is an ideal fungicide to have in stock, as it is a broad spectrum fungicide with six diseases on the label; Fusarium Patch, Red Thread, Dollar Spot, Anthracnose, Leaf Spot and Rust.

When in doubt about any diseases appearing on the turf at unseasonal times of

year, Colin recommends the use of the Bayer TurfXpert app.

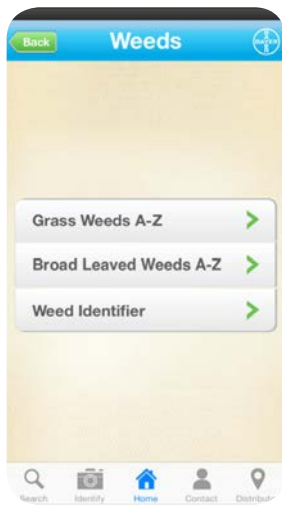
The TurfXpert app is free to download and contains high quality photographs and detailed information on over 100 turf diseases, turf weeds and turf insect pests found in the UK and Republic of Ireland. The app reports what they look like, where they're found, and also treatment options, with both cultural and chemical practices.

"Through the app, you can identify what weed or disease you have on your turf. To identify weeds, you choose the leaf shape and the flower colour from the list of options.

For diseases, you work through a list of options for general symptoms, the foliar indications and the sward composition from a list of options that will then tell you what the disease is.

But if the key information is unavailable or you are unable to identify the weed or disease, there's an 'identify' button on the bottom of the screen which you can use to take a picture of the weed or disease with your phone or camera and then submit it to the Bayer Turf Solutions team.

This is then e-mailed di-



rectly to Dr Colin Mumford, technical manager at Bayer, who will get back to you as soon as possible with the identity of the weed or disease and the most advisable treatment for it.

Colin receives around 20 turf weed, pest and disease enquiries per month through the app. "I get enquiries from all over the UK and Ireland, but sometimes further afield, so I forward these onto the wider Bayer Turf Solutions network for identification, and I aim to give feedback to my customers within 48 hours. I also provide general information and guidance, which is always well received.

"The app has been downloaded by 4781 professionals in the industry, and it's fast becoming a vital tool in the greenkeepers armory," says Colin.

"You can access information on all Bayer turf products and the distributors of these are listed on the app, so you can see where to purchase products throughout the UK and Republic of Ireland."

The TurfXpert app is part of a wide offering of resource that the Turf Solutions team offers. "We aim to provide solutions, general information, support and guidance.

This might mean helping with identification via the app, but we are also happy to go out for site visits and advise on any issue," adds Colin

The Turf Solutions team are clear that the best way to avoid disease in turfgrass is to make sure it's in a healthy condition by giving it the best chance when it comes to standing up to stress, but to always be on guard for changes in the turf because early identification gives you the best chance of successful treatment of the problem, and of recovery.

Contact the Turf Solutions at turfsolutions@bayer.com or on 00800 1214 9451 and to find out more information visit: <http://www.environmentalscience.bayer.co.uk/Contact/Turf-Solutions-Team>

INTERFACE® contains 256g/L iprodione and 16g/L trifloxystrobin (MAPP 16060) (PCS 04882). USE PLANT PROTECTION PRODUCTS SAFELY. ALWAYS READ THE LABEL AND PRODUCT INFORMATION BEFORE USE. PAY ATTENTION TO THE RISK INDICATIONS AND FOLLOW THE SAFETY PRECAUTIONS ON THE LABEL. TRIPLE RINSE CONTAINERS AT THE TIME OF USE, PUNCTURE AND INVERT TO DRY.

CPD Questions

1. What reason does the article suggest, for anthracnose appearing later this year?
2. Anthracnose, foliar blight and basal rot are primarily diseases of which grass, under stress conditions?
3. What is the first stage of foliar blight?
4. What season is foliar blight most common?
5. What can be a common misdiagnosis of yellow tuft?
6. Prolonged wet weather can heighten the risk of Microdochium patch, so it is a key disease to look out for during which season?
7. Turf stressed by snow can be more susceptible to which turf disease?

Complete the quiz online and earn
1 CPD Credit by visiting this link:

<https://goo.gl/sJc0oo>

or using this QR Code:



Royal rescue



How BIGGA member Paul Larsen's radical approach has enhanced one of the UK's premier links courses

With his characteristic spiky hair and black wraparound sunglasses, Royal St George's Paul Larsen strikes an unconventional pose for Head Greenkeeper at one of the UK's very, very best links courses and a bastion of traditional golfing standards.

Yet it is through Paul's radical approach of adopting innovative new techniques alongside the highest traditional links greenkeeping skills that he is restoring the quality of all the club's turf surfaces to their finest condition, over a short transition period.

Extreme wear and tear from the sheer pressure of global golfers' high demands to play this prestigious course all year round, along with changing climatic conditions and little respite from the easterly coastal winds, had seen the long-renowned native fescue grasses gradually overtaken and dominated by coarse Ryegrass and Yorkshire Fog.

The incredible topography and character of Royal St George's remained, but the coarse grasses were undoubtedly affecting playing surface quality of the fairways and greens, and if players strayed off-line into the rough it was proving an impenetrable mess.

Paul recalled: "We needed to change our management and cultural practices to make conditions more favourable to the finer fescue grass species. This was particularly true of the nutrition that we cut back significantly to repress the coarse grasses, but where the fescues

can still respond."

However, with the popularity of the course and the high profile tournaments played, the golfing pressure on the turf was never going to be alleviated. Furthermore, cultural practices alone would take many years, if ever, to reach the desired outcome.

Around five years ago, Paul started Rescue trials some small areas around the course, to evaluate if the coarse grasses could be selectively controlled and leave the fine fescue species to recover. Encouraged by the results, two years ago, with the advice and support of STRI's Alistair Beggs and John Noyce, formerly of ICL/Everris and now with Collier TurfCare, he took the brave step to treat virtually all the fairways and tees in one autumn application. A second phase has seen all the greens treated, twice, and now the collars and surrounds.

"The club's Greens Committee were extremely supportive and excited with the potential to get the turf back to a true links fescue," said Paul. "But it was an extreme route and, in places, it had a dramatic effect. We were unfortunately hampered by growing conditions that limited the initial autumn overseeding."

The visual effects as the coarse grasses died back were best described as 'difficult', reported Paul, especially as it coincided with one of the club's prestigious competitions. Although it looked bad, in fact the playing surface quality in the greens remained as good as they had been before, he added.

"As a greenkeeping team we had some challenging conver-



sations with a few vociferously disgruntled members, and it has required some very welcome support from STRI and the club's chairman of greens Peter Cowell to stay on the journey. But as we have gone through year two of the programme, the results have been so impressive that playing conditions are so much better every day.

"We have continued to hold course walks for members to explain what we have done and why, along with the future plans. It has really emphasised the importance of good communication of objectives and what will happen in the process. But I fully believe the members, management and greenkeeping team have now seen the benefit and are fully with us to complete the programme.

"It has possibly given us the added confidence to go on and try new things and look at things in different ways that we can manage the course with further enhancement in its design and playability."

Encouragingly, English Nature have been really impressed with the results achieved and the restored dominance of the desirable native grass species it wants to see in the area. A wide diversity of other native flora can thrive alongside the fescue in the rough and out of play areas, which is supporting insects and other species. The course has already been elevated up the English Nature ratings and Paul plans to continue to work with local ecologists and environmentalists



to further enhance its ecological value. Royal St George's is also GEO certified, which he believes has indicated it is working in the right direction.

With so much of the coarse grasses removed with the initial applications, the second year of universal Rescue treatment across the fairways and greens has had far less of a dramatic visual impact.

One of Paul's tips has been to put on a small amount of N prior to Rescue application, to get the target coarse grasses growing well and taking up the herbicide quickly.

"We are confident we will see the Rescue take effect and the weed grasses start to die back 14 days after treatment, so we can time applications around any specific tournaments and play."

The greenkeeping team at Royal St George's are given no maintenance week and have to work around the busy playing schedule.

The Barenbrug fescue seed, initially sown at 40g m² in one direction in August, followed by a further 20g m² in alternate directions in September, is producing a beautiful clean surface. Paul said the Vredo overseeder had worked very well for precise seeding depth and producing sufficient seed to soil contact to achieve good germination when conditions have been right.

"We looked at drilling in alternate directions, but wanted to avoid too much surface disturbance, and it appears to have been working fine.

"We did find that where there was Yorkshire Fog there would generally be some existing fescue under the leaves that would fill and recover quickly. But, beneath the Ryegrass plants there was nothing when it died back, so the seeding was especially important."

Paul believes the foundation is now in place for a really strong fescue dominant sward. Composition of some of the tees treated in early Rescue programmes are now 100% fescue. The fairways look immaculate and the consistency of colour is amazing. They are playing extremely well with no signs of stalking or bobby effect of the coarse grasses.

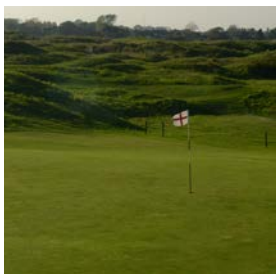
Other management practices are further helping to protect and encourage the fescue plants. For the first time he has been able to rope off areas and better direct golfers movements to reduce impacts of traffic at pinch-points. Using a combination of alternating rolling and mowing on the greens is keeping the surface roll smooth and consistent

at a slightly raised height of cut, which is favourable to the fescue recovery. Nutrition has been cut right back, to well under 50kg N/ha on the greens, which Paul carefully manages to trickle feed for plant health, without encouraging too much growth.

Paul has not been unduly worried by a little Anthracnose on the greens over the summer, since it has primarily affected and taken out some of the Poa grass, leaving space for the over sown Fescue to fill in.

He is now planning a third year of Rescue treatment across the fairways and greens and repeat treatments on collars and approaches to remove any further coarse grasses. Each successional treatment has less visual impact, but continues the incremental improvement in quality and gives the continued over seeding of fescue grasses the best chance to establish.

Removing coarse grasses from aprons and surrounds will further help reduce the pressure of reinvasion on greens, as well as improving playing conditions and visual appearance. It has also enabled him to reshape greens and surrounds to enhance the playing experience. Extending aprons and clearing



second cut has brought new features into play.

“Some of the holes where coarse rough had encroached were becoming extremely difficult for all but the perfect shot; we are getting back to a position where anything a little wayward is penalised without being impossible, whilst great shots onto the green are still rewarded.

“The combination of Rescue, with cutting and removing vegetation, has helped us produce it far faster and more effectively, as well as the practical chance to manage it in the future and prevent it reverting to rough.”

On the famous 18th green, the hugely enhanced quality of the fescue fairway, collar and approach has given Paul the chance to extend the area of the green forward. It will have a two-fold benefit of bringing another bunker into play to give another dimension to the hole, and bringing the hole position forward will alleviate player pressure and compaction on the existing back pin position that will allow the fescue there to recover better.

Also, with the improved turf quality around the greens, Paul has shaped out a new area of approach cut surround in a dip to the back right of the 18th; any

player now slipping off the green into ‘Larsen’s Hollow’, could find themselves facing a tricky chip back to the pin – and during a major competition surrounded by the pressure of a thousand spectators packed in the stands just a few metres behind them.

The course is prepared in such a way that it could go into major tournament mode at any stage without changing any of the existing programmes and management practices.

Paul concluded: “Royal St George’s is rightly renowned as a leading Open venue with outstanding quality. It is fantastic to be able to set up a course for the world’s best golfers. But we get the greatest reward from presenting a course in that condition for our members and players every day of the year.”



On Course Furniture



*Manufactured in the UK
at the Eagle Plant*

Contact Eagle for more information
t + 44 (0)1883 344244 e info@eagle.uk.com w www.eagle.uk.com

Point of Play Tee Markers from £4.95



EaglePlex Marker



Tee Caddy Marker



Upright Marker



Octagonal Marker

Cap fungi - mushrooms and toadstools

In his final BASIS article of the year, Graham Paul from Sherriff Amenity focuses on fungi in turf in the shape of mushrooms and toadstools

Autumn is often referred to as the 'season of mists and mellow fruitfulness' and each year it can bring back the problems caused by fungi on turf. Falling night temperatures cool the soil, thus slowing the growth of grass and, with an increase in humidity that results from frequent autumn rainfall, conditions are right for the invasion of the fungi.

Greenkeepers get ready to do battle with the disease patches that can spoil the appearance and play of the turf they manage. However, this is also a time when we see an invasion of the macroscopic fungi that also inhabit the soil. These cap producing fungi literally give 'rise' to the structures we know

as mushrooms and toadstools. In this short article I will be taking a look at the larger fungi and the options we have to deal with them.

According to literature there is no difference between mushrooms and toadstools; except perhaps on the weekly shopping list, where most supermarkets offer only a variety of different mushrooms for sale! The terms mushroom and toadstool both refer to the fruiting body of types of fungi that produce these large structures, whose sole purpose is to distribute reproductive spores. In the past there was a tendency to refer to poisonous species as toadstools but there was no clear rule on this.

Many thousands of spe-

Parasol mushroom -
Macrolepiota procera
(pictured above)



cies of mushrooms are found worldwide; a rough estimate would be 20,000 species globally with some 4,000 in the UK. Mushrooms are classified in the order Agaricales and are spread between two phyla; Basidiomycota and Ascomycota. The 'white' or 'button' mushroom (*Agaricus bisporus*) is the most common form of edible mushroom, accounting for 90% of all types consumed in the western world. Some strains of *A. bisporus* have darker flesh and are sold as 'Portobello' and 'chestnut' mushrooms.

Certain species of mushrooms are highly nutritious; providing us with a balanced food that is low in fat, carbohydrates and salt yet contains



Mushroom gills bear reproductive spores

some essential minerals and vitamins. Healers in ancient times recognised the medicinal benefits of mushrooms and today our scientists have discovered the valuable contribution they make towards improving well-being; lowering cholesterol, blood pressure, supporting the immune system and helping in the fight against certain forms of cancer.

The vast majority of mushrooms are edible although not all will suit the human palate. A few species are poisonous and can have serious or even fatal consequences when consumed. Some poisonous mushrooms appear similar to edible varieties, so extreme caution must be exercised when eating wild mushrooms. The landowner's permission should also be sought before picking fungi.

There are three types of problems caused by macroscopic fungi on turf.

- Litter left behind when the fruiting structures are broken up by mowing.
- Fairy rings
- Hallucinogenic species

The presence of mushrooms littering the surface can usually be attributed to pieces of decaying wood or dead plant matter below the surface. The

fungus is just doing a bit of recycling and will not damage the grass other than making a mess. There are no chemical remedies to deal with this problem so probably the easiest method of control is to remove the caps as soon as possible after they are first seen. Grasp the stalk as low down as possible and deposit the caps well away from the turf – on a compost heap would be best.

The reproductive spores are often borne on gills on the underside of the cap. When mature they fall and are carried on the wind to establish the mushroom in new locations. If the caps are removed cleanly and swiftly we can hope to minimise the spread of the problem in future. I have noticed that the caps on my lawn wither when I apply an autumn fertiliser, which may be due to the high iron content in the product.

The second group of problematic mushrooms on turf are produced by fairy ring fungi. Strictly speaking they cause a disease of the soil rather than the turf because there is no invasion of the grass plant tissue. Instead we see symptoms that are external effects on the turf caused by a fungal presence beneath. The fungal



A cluster of bonnet mushrooms on a lawn



Type 1 fairy ring cap

mycelium is usually found between 75 and 150mm below the grass surface. The ring shape is the result of the underground fungal mycelium growing in a rough circle away from a starting point. The rings will increase in size each year as the fungus moves through the soil, feeding on organic matter as it spreads outwards. Depending on the species, the ring will increase in diameter by 30 to 50cm per year. If you are prepared to wait long enough it will eventually move into neighbouring land! If two rings meet they usually join

together as one. We recognise three types of fairy ring according to the severity of the symptoms.

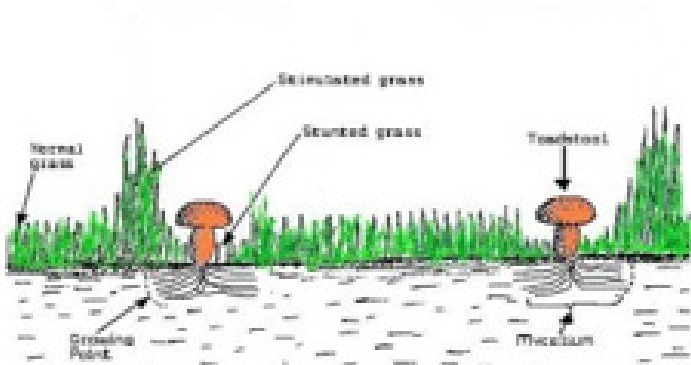
Type 1 fairy rings produce a circle in which the grass is stunted or absent. There are usually toadstools arising from this area of poor growth (dead area) and for a few cm on either side. The dead area is caused by the deposition of thick wax in the soil where the fungus is located, which prevents water from reaching the grass roots.

Type 1 rings are also characterised by a band of stimulated grass adjacent to the

dead area; which is longer, thicker and darker green in colour when compared to the surrounding turf. The stimulated growth results from excretion of waste products such as nitrates and other nutrients by the fungal mycelium as it breaks down organic matter for food.

The most common species causing type 1 rings in the UK is *Marasmius oreades* but each of the three ring types is associated with many different fungi.

The second type of fairy ring produces a band of stimulated grass growth in which mushrooms or puffballs can be found at certain times of the year. Although this is not as damaging as the type one ring, since it does not kill the grass, it is still a disfiguring scar on an area of close mown fine turf such as golf or bowling greens. The dark bands or 'ribbons' are more evident in long hot dry summers when the surrounding grass tends to lack colour. The illustration shows several rings that have joined



Cross section through a type 1 fairy ring (Diagram)

SELF ASSESSMENT

Use the questions below to check your understanding of this topic. Readers can claim BASIS points by visiting the 'BASIS Points Article' section on the Sherriff Amenity website – www.sherriff-amenity.com and answering the questions correctly.

- 1) **Approximately how many species of mushrooms and toadstools can be found in the UK?**
 a) 2,000 b) 4,000 c) 20,000 d) 400
- 2) ***Marasmius oreades* is found in which of the fairy rings?**
 a) Type 3 b) Type 2 c) Type 1 d) Type 4
- 3) **When two fairy rings meet in the soil they:**
 a) Come to the surface b) cancel each other out c) Produce puffballs d) form one large ring
- 4) **Approximately how many species of mushrooms contain the hallucinogenic chemicals psilocybin and psilocin?**
 a) 100 b) 150 c) 4,000 d) 200



Type 1 ring – caps and stimulated growth



Type 2 fairy rings – produce a band of stimulated grass growth that may also contain puffballs or caps

together.

The third type of fairy ring has only a circle of toadstools or puffballs, without having a stimulated or a dead area. Type 3 fairy rings are essentially the same as the first group of problem caps on turf, apart from their circular growth habit. Harvesting caps or puffballs from the rings prior to mowing will help to minimise the spread to new areas.

Control of fairy rings is extremely limited following the withdrawal of several chemicals in recent years. One approach is to tackle the wax deposits in the soil with a specialised wetting agent such as that marketed by Vitax under the brand name 'Clearing'. This product is recommended for all three ring types, with application in the spring or early autumn.

There are no approved products for controlling type 1 rings but there is a label recommendation for treating type 2 rings with either 'Heritage' or 'Heritage Maxx' - available from ICL (formerly Evertis). The recommendation is based on limited evidence and the user is advised to pre-wet the area to be treated to improve the penetration of the chemical through the soil.

Hallucinogenic mushrooms (now popularly known as 'shrooms' or 'magic mushrooms') present a third type of 'cap fungi' problem to turf managers. Globally there are about 200 species of mushrooms that have hallucinogenic properties. Famously, the TV gardening presenter Alan Titchmarsh found some Fly Agaric (*Amanita muscaria*) in the Gardens at Buckingham Palace. This species has mind altering properties but is also categorised as poisonous.

However, a spokesman from the palace was quick to report: "For the avoidance of doubt, fungi from the garden are not used in the Palace kitchens."

In the UK the most commonly found 'shroom' is the Liberty cap *Psilocybe semilanceata*. This tiny 'pixie-capped' species is often found in moist pastures, preferring areas with 'weathered dung' and according to some experts it is particularly associated with turf grazed by deer herds. The cap is no more than 15mm across and appears brown in colour when wet but dries to a pale camel colour.

The liberty cap belongs to a group of around 100 species that contain the chemicals psilocybin and psilocin, which cause hallucinations when ingested. Much research has been done into the effects of consuming these mushrooms and it has been reported that they are not addictive in any way but users can become psychologically dependent on them. The 'Misuse of Drugs Act 1971' lists these to chemicals as class A drugs but the law regarding the status of the mushrooms that contain them was unclear until the enactment of 'The Drugs Act of 2005' when both fresh and prepared (dried/cooked/formulated) specimens became illegal to possess, sell or consume.

Now here's the catch 22 problem; managers of sports-grounds, especially those belonging to schools and colleges have a duty to prevent access to these fungi. However, it is illegal to pick magic mushrooms such as liberty caps if you can identify them as such and if you are found in possession, the penalty could be seven years in prison and a fine.



Type 3 fairy ring

Liberty cap - *Psilocybe semilanceata*
(Wikipedia)

Water independence

How Royal Jersey Golf Club is reaping the benefits from an independent water supply – including saving money

Establishing and optimising an independent water supply brings considerable benefits to sporting venues, particularly golf courses where effective grass management is vital for year round play. The benefits include a significant reduction in annual water costs, consistent water quality, constant pressure, a reduced environmental impact and often an increase in asset value. However, establishing an independent water supply in itself is not enough. The key is to maintain the system to ensure water quality, maximum flow, minimal operational problems and a sustainable use of resources.

Water is the most essential of our natural resources and global predictions for population growth and climate change mean pressure on our water resources will continue to grow. Part of the Environment Agency's remit is to help consumers manage and use water effectively and sustainably, whilst at the same time balancing the needs of society, the economy and the environment.

Water is an essential resource for golf courses but balanced against this need and potential environmental impact is the significant contribution golf as a sport makes to both the economy and the wellbeing of society. A report produced in April

last year on behalf of the England Golf Partnership estimated that golf is worth a massive £3.4 billion annually to England's economy and employs nearly 50,000 people. It is one of the largest participation sports, enjoyed by men, women, girls and boys of all ages and abilities, and has more than 1.1 million members belonging to more than 2,900 golf clubs in the UK. The European Golf Association's most recent figures state there are more than 7,200 golf courses in Europe, played on by over 4.2 million golfers. There is little doubt that golf has a significant place in our society and greenkeepers have worked hard in recent years

Ben Blampied-Smyth





minefield during the Second World War when the Germans occupied the Channel Islands. The remnants of the German invasion can be seen along the opening hole where two gun emplacements are situated.

Ben Blampied-Smyth, BIGGA member and Head Greenkeeper at Royal Jersey, said: "Having a clean water supply gives consistency and uniform surfaces which is vital. Grass consistency and coverage is one of the most important parts of my job and I need to ensure the grass is even and flat enough to play on all year round. Having our own water supply is essential."

A borehole is able to provide a consistent water supply, reducing or even removing reliance on mains water and providing a more economical alternative. It has been estimated that boreholes can cut water costs for golf courses by up to 80%. Treated water is expensive; in some parts of the UK a cube of water can cost up to a £1 from a public supply. The cost of water from a borehole is around 2p to 3p per cube.

The environmental footprint of responsibly abstracted water use is lower than mains water because water is not treated to drinking water standard. Abstraction of less than 20 cubic metres a day is permitted without a license and water can be abstracted on a daily basis and stored for later use. If more is required a license must be applied

for from the local authority. A borehole can be used as a backup in drought conditions and can often provide a greater volume of water and better pressure.

Royal Jersey has four boreholes feeding into a Rainbird irrigation system, installed last year, which services the fairways, tees, greens, approaches and green surrounds. The oldest borehole was drilled in the 1960's and is 100 metres deep. The other three are 55 metres deep with an 8" casing and the most recent borehole was drilled in 2004. The club is careful with its water use and incorporates soil moisture sensors as part of its water management programme to preserve supplies. The Club takes sustainability seriously and in December it was nominated for a 2015 Golf Environmental Award.

The biggest issue facing the Royal Jersey's water supply, and many other independent water supplies, is mineral and bacterial contamination, particularly iron and iron related bacteria. Without proper care this contamination can significantly reduce yield, cause serious system failure, increased maintenance costs and compromise the original reason for establishing an independent water supply.

Ian Rowles from Geoquip Water Solutions said: "Iron bacteria and iron oxide contamination are estimated to affect about 40% of the

to minimise the environmental impact of golf course maintenance.

The Economic Impact of Golf on the Economy of England report estimates that, in England, close to £360 million is spent annually on golf course maintenance (including renovation and infrastructure improvements), with similar figures seen across Europe. One of the most important costs is maintaining an adequate water supply.

The Royal Jersey Golf Club has an 18 hole course and was formed in 1878. The Club has its fair share of history including receiving its Royal warrant in 1879 and the course turned into a



world's water bores with anecdotal evidence indicating that this number is steadily increasing.

“Contamination is relatively easy to identify as rust-coloured slimy or gelatinous deposits tend to accumulate in the borehole which in time develop into solid encrustations that coat both the bore and equipment and become difficult to remove. The symptoms can have far reaching consequences including reduction in the capacity of the bore, deterioration of water quality, motor burn out of the submersible pump and sometimes the complete failure of the system.”

Jersey suffers from high iron content in its water, particularly in the south eastern part of the island. “The water looks crystal clear but when you disconnect the pipes you can see the damage iron contamination causes quite clearly,” said Ben. “It blocks up the filters and pipework and you can see it encrusted on the pumps.

In the past it has severely reduced the water output, quality and pressure.”

Ben has now introduced a borehole maintenance programme and part of that programme incorporates BoreSaver from Geoquip Water Solutions, a range of well treatments for systems suffering from or prone to iron bacteria, iron oxide, manganese oxide, calcium carbonate and other minerals. Approved by the Secretary of State in the UK and now used in more than 14 countries worldwide, BoreSaver completely removes deposits and residues that build up and cause blockages in wells, pipes, pumps and other equipment. It is safe, easy to use and biodegradable, and so particularly appropriate for environmentally responsible water management.

“The difference in our water flow and pressure has been significant,” said Ben. “As part of the irrigation update last year we fitted some new borehole pumps and in borehole 4 we were running



at only 3 cubes an hour and then tripping out. Following the BoreSaver treatment it's achieving between 18 and 22 cubes an hour and we have no outage problems.

“We recently treated two boreholes and improved the output in one borehole from 8.4 cubes an hour to 16.8 cubes and the other from 7.8 cubes an hour to 12 cubes an hour. BoreSaver is relatively easy to use. We poured 70% of the crystals into the borehole, ran it for five minutes and then left it for fifteen, repeating the cycle four or five times. At the end of the day we emptied out 1000 gallons, added the rest of the product, ran it for five minutes and then left it overnight. In the morning we flushed out the borehole until it ran clear, reconnected the pipework and tested the pump.

“BoreSaver's low environmental impact makes it a particularly attractive solution.”



BARONESS

Quality on Demand

Total Cutting Quality

Baroness cylinder
mowers
the best cutting
performance
on the market!



www.baronessuk.com



LM2400



LM283



The Baroness range of cylinder mowers sets the industry standard, combining high work rate with outstanding quality of cut.

The unique Baroness production process means our cutting cylinders and bedknives set standards others struggle to match.

Whatever your turf conditions or type of grass, we have a mower that will give you amazing results and at a whole life cost you won't believe!

e-mail: sales@baronessuk.com

tel: 01256 461591

 Kyoisha UK Ltd. a subsidiary of 
Kyoisha Co. Ltd. of Japan

 **BIGGA**
partner



LM2700

Section Notes

Please email your notes to steve.castle@bigga.co.uk by the 10th of the month

All the latest news from your Section, in your new-look notes pages...



Around the green

Scotland & Northern Ireland

Find us on **facebook** Bigga Scottish Region

Contact your Section correspondent with news, events or anything else for Around the green...



CENTRAL
Craig Boath
cboath@caroustiegolflinks.co.uk

Find us on **facebook**
Bigga Central Section



SOUTH WEST OF SCOTLAND
Amanda Dorans & Ian Smith
amanda.dorans@lochlomond.com / iansmithgm@hotmail.co.uk

Find us on **facebook**
Bigga South West Scotland



EAST
Hamish Campbell
greenkeeper@alancampbell.demon.co.uk

Find us on **facebook**
Bigga Scottish East
@BIGGA_ES



NORTH
Paul Sharp & Neil Sadler
paulmsharp@hotmail.com
gkneil@sky.com



WEST
Brian Hillen
bria1706@hotmail.co.uk



NORTHERN IRELAND
Chris McArthur
cmcarthur66@hotmail.co.uk

Find us on **facebook**
Bigga Northern Ireland

Events Coming Up

NORTH

Next year's outings have also been confirmed with Tain hosting the spring outing on 21 April. Boat of Garten is hosting the Autumn outing on 6 September - two very good golf courses, so well worth putting these dates in your diaries!

NORTHERN IRELAND

Educational days over the winter period are in the planning process dates TBA, we intend to have more events throughout 2016.

EAST

BIGGA East of Scotland Section are having a wee "rendezvous" at Sportsters Bar, Market Street, Edinburgh on 12 December. It has plenty of TVs showing live sport and it is close to the station, so coupons on and let the train take the strain! All are welcome, 2 booths have been booked.

News

WEST

AGM News - Stepping down from committee are Gordon Howat due to work commitments, and also retiring after 25 years service to the section, in many roles, including 2 years as Scottish Chairman, is Stuart Taylor. We thank them both for all their efforts over the years. I will be taking over Stuart's role as magazine correspondent. I am also happy to report that coming on to committee are Alan Jack, Kenny Hunter and Kerr Hunter.

The BIGGA West Section is now on Facebook and Twitter, and we will endeavour to keep the members up to date with all that is happening within the section. If any member has anything newsworthy that they would like to include on the Facebook page, or in the magazine report, then feel free to contact me.

Congratulations to Scott Davidson, who has been appointed Course Manager at Cathcart Castle GC. Also to Mark Cummine who has recently taken over as Course Manager at Westerwood Golf and Country Club. We wish you well, and hope to see you at future section events.

I would like to take this opportunity to wish everyone a very Merry Christmas and a Happy and prosperous New Year.

SOUTH WEST OF SCOTLAND

Weather in South West of Scotland has been rain, rain and you guessed it, rain! Let's hope Santa can make it through the "Perfect Storms". A warm welcome to our new Vice Chairman Stephen McBlain - looking forward to working with you in the coming months! Congratulations to Patron Award winner Steven Carmichael - well done!

Thank you to Derek Wilson and team at Bogside for hosting our recent AGM - as always the venue was perfect and the food & beverage staff went to great pains to make us welcome.

Many thanks to Ian Craig, STRI Turfgrass Agronomist for being our AGM guest speaker. Ian gave us a brilliant overview of his six weeks spent at the African Cup of Nations. His presentation "Road Blocks, Riots & Voodoo Rituals" is a must see!

Thank you to Neil Hamilton and his team a Powfoot for providing a great venue for Bob Taylor's Ecology seminar and course walk. Bob kept us up to speed with environmental management and meeting legislation along with an insight into environmental management at Portrush.

Turnberry have been keeping everyone up to date with the changes on Twitter and have to say, great job Team Turnberry - it looks amazing! Can't wait to see it completed.

As always, please get in touch with you news and photos at the above email addresses or alternatively post on Facebook or Twitter. Merry Christmas and all the best for 2016 - See you at BTME!

NORTHERN IRELAND

As I write this in mid November the temperature is 15C - hardly what we expect in late autumn. Then again the weather for 2015 has hardly been textbook so nothing surprises me in what is proving to be a testing season for turf managers.



What to make of a year that began with snow, a cool spring, wet summer followed by rampant grass growth; I don't know. We'll all be ready to enjoy the festivities with plenty of food and alcohol (not necessarily in that order).

I'll hope to announce a seminar in early 2016 and have a section day out next year. Also BTME is around the corner and it needn't cost the earth. There are scores of free seminars and workshops not forgetting the show.

There isn't much more to report so I'd like to wish you all a merry Christmas and a prosperous 2016.

NORTH

With the 2015 season behind us, focus turns to BTME. Hopefully many of you will be venturing to Harrogate, it is a great event.

Our Scottish North Section AGM took place on 22 October at Deeside Golf Club. The superbly presented 9-hole course was an ideal venue for the meeting. On behalf of the committee and members, thanks to Neil McLoughlin, his staff and Deeside Golf Club for the use of their excellent facilities. The winner of the Stableford was Robert Patterson, with Adam Lindsay the runner up.

Following the usual formalities, we welcomed Richard Johnstone from Nairn Dunbar onto the committee. Richard will be a great asset. If anyone else in the section feels like they could contribute to our committee, please get in touch as we are always looking for members to further help improve our section.

On behalf of the committee, we wish everyone a Merry Christmas and a Happy and successful New Year. Anyone with any information or news for Around the Green, please contact Neil or myself.

CENTRAL

Well November has been a bit depressing - wet, high temperatures, heavy dew and with that a lot of disease pressure. I hope everyone has come through ok.

Congratulations for this month go to Scott Fenwick, Steve Chappell and the rest of the team at Gleneagles on being awarded the Solheim Cup in 2019. Looking forward to that.

Love is in the air at Carnoustie Golf Links, Congrats to Stuart Kerr and his new wife Rebekah on their recent marriage and to Duncan Cairnie who proposed to Stacey on 5 November

with another kind of sparkler!

A lot of you in the section have been busy with winter works so feel free to post your photos on the Central Section Facebook page. Let us see what you are up to.

A few guys from the section (Bob Meikle and John Watson) managed to get the chance to go down the Cleveland Potash mines along with a few others organised by ICL UK.

Once again thanks to all who turned up to our AGM. Shaun Anderson will take the reins again for another year as Section Chairman with Richard Jenkinson as Vice-Chairman. As I write we are about hold another educational seminar with Gordon McKie talking about work on the course before/ during/after The Open, impacts of the weather and a review on how The Open went.

We have a few seminars lined up over the Winter period, make sure you don't miss out by sending your up to date email address to Gordon Moir gordon.moir@standrews.com. Likewise if you have any ideas or want to do a presentation yourself about your course, get in touch with Bob Meikle bob@crailgolfingsociety.co.uk

The Central Section would like to wish all Patrons and members a very Merry Christmas and we hope to see you all plus new faces at next year's events. All the best for 2016.

EAST

Many thanks to Double A Trading and Campeys for providing a demo of the Air2g2 at our AGM At Dundas Parks and thanks to Dundas Parks for hosting us, kudos to Stuart Ferguson and his team for the condition of the course.

The results of the AGM are that the committee remains the same, but just as important Ryan Beck won the Jimmy Neilson trophy.

Good luck to Stuart Speirs in his new role as Deputy Head Greenkeeper at Kirkcaldy.

Its been a very mild back end and folks are getting on with some impressive winter works and renovations, all on top of still having to do a fair bit of cutting, do we all use floodlights?

Anyone wishing to have news added or are willing to write a short topic of interest for the GI Magazine then please get in touch. Again a reminder that if your contact details have changed please feedback ASAP.



Northern

Contact your Section correspondent with news, events or anything else for Around the green...



NORTH EAST
Glen Baxter
glen.baxter@rigbytaylor.com
Find us on facebook.
Bigga North East
@NEBIGGA



NORTH WEST
Tom Wood
& Tim Johnson
tomwoodtmw@gmail.com/tim_j87@hotmail.com
Find us on facebook.
BIGGANorthWest
@BIGGANorthWest



CLEVELAND
Anthony McGeough
amcgeough@aol.com
Find us on facebook.
BIGGA Cleveland Section



NORTHERN
Chris Goodall
christopher
goodall11@hotmail.com
Find us on facebook.
BIGGA Northern Section



SHEFFIELD
Lee Greveson
leegreveson10@gmail.com
Find us on facebook.
BIGGA Sheffield Section
@Sheffield Bigga



NORTH WALES
Pete Maybury
petemayb66@aol.com
Find us on facebook.
North Wales B.I.G.G.A.
@Bigga NorthWales

Events Coming Up

NORTH EAST

11 December - Bring a bottle golf and AGM to be held at Dunstanburgh GC

CLEVELAND

The bring a bottle Christmas golf day will be on Tuesday 8 December at Cleveland Golf Club the usual fare of £16 will guarantee a superb meal and a round of golf and a prize! Hopefully the Famous Middlesbrough delicacy the one and only "Parmo" will be on the menu. Cheques to be made payable to BIGGA Cleveland section, send to 6 Rosewood Court, Marton, Middlesbrough, Cleveland TS7 8QR.

We are looking for a venue for the 2016 Spring and Autumn Tournaments. If anyone fancies putting their club forward notify myself on amcgeough@aol.com, Ian Pemberton on 07791 695768 or on the Cleveland section Facebook page.

NORTH WEST

Our spring tournament will be held at High Legh Park Golf Club in March, more information to follow in the new year.

SHEFFIELD

The Christmas Golf Tournament and AGM will be held at The Waterfront on 10 December, meet at 11 for bacon roll and first tee at 11.30. AGM at 3pm followed by two course meal. Dress code jacket and tie please. Contact Neil Peters

to book on 07983 612309.

If you don't play golf then some Section members are having a social night on Friday 15 January 2016 at Owlerton Dog Track, meeting at The Crown at 6.30pm, simply come along and look out for Jim Stevens.

The NEW Flat Cap Turf Club will start in 2016 so please look out for details of these informal meetings on the Sheffield section Facebook page and Twitter account.

NORTH WALES

We would also like to find out if there is enough interest to run a bus to Harrogate again next January. BTME 2016 promises to be the biggest ever so if you are interested please contact me by December 20 with names and pick up points, e-mail and text entries preferred then I can't get details wrong, please don't leave it too late this will not run if it is under subscribed.

News

NORTH EAST

Congratulations to Simon Olver who recently married his fiancée Kelly. The north east section wish you a long and happy future together.

CLEVELAND

Slow going on the news front this month apart from the recent wedding of our resident Master Greenkeeper Pete Newton tied the knot with Aniela Scarpa. On behalf of the Cleveland section I wish you both all the best in your future together. There must be something in the section air as rumour has it Anthony Cheesebrough of South Shields Golf Club will be walking down the aisle on the 12 December - good luck pal!

NORTH WEST

We would like to congratulate Paul Davies of Wigan GC on winning the Bert Cross Trophy at The Wilmslow Golf Club with 37 points. We would like to thank all of the greenstaff at Wilmslow for all of their hard work through bad weather to prepare the course to the highest possible standard.

We would also like to congratulate Chris Sheehan of West Derby Golf Club on becoming Chairman of BIGGA Northern Section.

The Committee would like to thank everyone who attended Myerscough College in October for our second seminar, your support was fantastic and it made the day a great success.

We would like to welcome Steve Hemsley, Lee Burton, Ed Ainsworth and Jonny Roberts onto the committee.

SHEFFIELD

Graham continues to wait for content for the Sheffield web page to celebrate the great work being done by greenkeepers throughout the Section so if you have any pictures and reports simply send them to phoenixheadgroundsman@phoenix.com and they will be added to the website www.biggasheffieldsection.com

The Section will be setting up an auction of sporting memorabilia in aid of the BIGGA Benevolent Fund so please watch out for further details and bid generously please.

NORTH WALES

The Christmas tournament, AGM and course walk took place at Nefyn golf club on 26 November, unfortunately this report was written before the event took place so there will be a full write-up in the January column.

There was a seminar held at Royal Vale Abbey golf club on 10 November on soil science, this event was hosted by

Symbio and participants said it was food for thought on soil care.

It finally falls on me to wish you all a very happy Christmas and a prosperous 2016.

Thanks to Sponsors

CLEVELAND

Thanks to Peter Marshall of Amenity Technology for sponsoring the Christmas golf day.

NORTH WEST

We would like to thank all of the section sponsors for the continued support that they provide throughout the year, thank you.

SHEFFIELD

We would like to thank Rigby Taylor for sponsoring the Christmas Tournament and also Mansfield Sands, Russell Groundcare and Premier Pitches for supporting the Section throughout 2015. We would also like to thank all the Section members who have supported events throughout 2015 and we look forward to even more support in 2016.

<http://www.biggasheffieldsection.com>



BIGGA Sheffield Section

For all Sheffield Section Greenkeepers, a place to showcase your projects and skills and also publish news



Home	Education	News	Events	How too	Projects	Showcase	Hire/wanted/borrow	Mission statement	
------	-----------	------	--------	---------	----------	----------	--------------------	-------------------	--



Flat cap turf club

By admin | November 22, 2015 | Comments Off

Just a quick post to announce that the Sheffield section are forming a "Yorkshire" turf club, we will be known as the flat cap turf club. Anybody involved with the ...

[Continue Reading →](#)

SIGN UP FOR OUR MAILING LIST.

Email Address :

[Join now!](#)

[CLICK THE IMAGE FOR BIGGA HOME PAGE](#)



[CLICK THE IMAGE FOR MANSFIELD SAND](#)

Maxicrop

Special offer from one of our sponsors

By admin | September 19, 2015 | Comments Off

Here's a very special offer from Mike Brear of Rigby Taylor, they are offering some really good Autumn/Winter packages with up to a massive 30% discount!! click Autumn Power Packs and ...

[Continue Reading →](#)



Phoenix Lely visit

By admin | August 19, 2015 | Comments Off

I was fortunate to have been taken to the Lely depot down in

South West & South Wales

Contact your Section correspondent with news, events or anything else for Around the green...



SOUTH WEST –
Jaey Goodchild
j.goodchild@
bowood.org



Bigga South West
@Bigga
Southwest



SOUTH COAST –
Steve Thorne
biggasouthcoast@
hotmail.com



Bigga South Coast
@BIGGA
southcoast



DEVON & CORNWALL
Neil Rogers
nrorgers@
countrywidefarmers.
co.uk



Bigga Devon and
Cornwall



SOUTH WALES
Andrew Hatcher
andrewhatcher1@
msn.com



Bigga South Wales
@BIGGASouth
Wales

Events Coming Up

SOUTH COAST

The calendar for 2016 is looking exciting with a good mixture of Golf Fixtures and Turf Clubs:

February 17 - South Coast Section Conference – Milton Abbey School
March – Turf Club – Tottenham Hotspur FC
April 5 – Spring Tournament – Broadstone GC
April – Turf Club – Roffey Bros. Quarry Tour
June 21 – Greenkeepers vs. General Managers – Rushmore GC
June 30 – Summer Tournament – Corhampton GC
July – Turf Club – Goodwood GC
September – Turf Club – Broadstone GC
October – South Coast Section AGM
November – South West Regional Conference
December 6 – Christmas Turkey Trot – Salisbury and South Wilts GC

More details of individual events and of how to book a place will be available via the usual channels of Facebook, Twitter and this section of GI Magazine as each event approaches.

SOUTH WALES

This year's Christmas event may be held before you read this. Just in case, a quick reminder our Christmas Comp or Night golf will be held on Friday 11 December at Glyn Neath GC.

SOUTH WEST

Last minute chance to attend our Section Christmas Tournament at Marlborough Golf Club on 15 December, any stragglers please get in touch promptly to avoid missing out on a fantastic get-together.

We are finalising next year's events and will shortly be publishing details for the 2016 programme. We have some new formats in place for 2016 including a par 3 competition followed by a barbeque, a perfect summer afternoon to look forward to as we move into the dark months! Please keep an eye out for details of this as well

as our well received Turf Clubs, seminars and golf days.

As ever, all of our Section events are open to members of other sections, please feel free to contact us and attend as everyone is welcome.

DEVON & CORNWALL

Our Christmas meeting is at Trevoze on 10 December. There will be a course walk with Course Manager Neil Ivamy followed by a Christmas dinner and a few jokes told by local funnyman Tank Sherman.

News

SOUTH COAST

Here we are at the end of another year that has seemed to zip by far too quickly! This year has seen the Section compliment the regular Golf Fixtures with a selection of Turf Clubs. These events have proved very popular and offer a relaxed, informal way of networking with fellow members and also to have a good look at facilities in different locations. We hope to continue this success into 2016 with some exciting events planned (See Events Coming Up).

Our golf fixtures will also adopt a different, more relaxed format through next year. The Section is hoping to offer golf days with an informal bite to eat in the clubhouse before heading out and enjoying a game of golf. The prize structure is also under review with the intention to offer a more tempting and exciting prize table for the winners. All members who attend these events are eligible for CPD points.

May the South Coast Section committee take this opportunity to say Merry Christmas and a Happy New Year to all our members and thank everyone for all their continuing support throughout this year.

SOUTH WALES

A great day's golf was had by all at Langland Bay GC. The course was in cracking condition, and there was great food and awesome selection of desserts. Winners on the day starting with nearest the pin on 11th & 16th green were Big D and Nigel Ruck. The longest drive was made by Lloyd Martinson and best trade was Rhys Norville.

Autumn competition winners 2015: 3 Nigel Ruck 33pts, 2 Darryl Jones 36 pts, 1 Colin Kerfoot 39pts great effort.

Four members of our section have been selected to attend BTME 2016, great opportunity for them all and a gentle reminder for everyone else who may be interested in attending. They are Marc Anderton, Iain Grant, Lloyd Martinson & Darryl Jones.

Darryl Jones entered the National Championship at Fulford Heath GC claiming longest drive on day 2 & involved in best 4 combined nett scores for South West & South Wales.

Wishing all a Merry Christmas and a prosperous New Year to all members and patrons. Thanks for your support during 2015, lots planned for new year with the South Wales section, keep up the support and enjoy the break.

SOUTH WEST

Our new section Committee positions have been finalised following our latest meeting and are: Chairman, James Braithwaite; Vice Chairman & National Representative, John Keenaghan; Secretary, Lucy Sellick; Treasurer & Regional Representative, Darren Moxham; Education Officers, Stuart Bowman & Tim Needham; Fixtures, Simon Kew & Chris Sealey; Trade Representative, Ian Barnett; Magazine News & Patron Liaison, Jaey Goodchild and our Regional Administrator is Tracey Walker. Any questions don't hesitate to get in touch with any of us.

Best wishes to Ali Turner who has just moved to a

new post at Knowle Golf Club after working on the team at Thornbury Golf for nearly 20 years. Ali started at Thornbury in April 1996 and held the position of Deputy Course Manager for some time before finishing up.

DEVON & CORNWALL

What is mother nature going to throw at us all next? A question all greenkeepers must be asking themselves at the moment! After the driest October many of us can remember November started wet and mild with many having to still cut the greens on a daily basis. It is supposed to be the time of year to be getting on with those winter projects.

On 11 November we had a section meeting at Staddon Heights GC near Plymouth. The course walk was lead by Course manager Jonathon Bullen. The golf was won by Dave Bodger from Tiverton GC with 34pts, second was George Stephens from Tiverton GC with 33 and 3rd place was Shaun Warren from Staddon Heights GC with 32. The longest drive was won by Andrew Prowse from Porthpean GC and nearest the pin was Shaun Warren using his local knowledge to full advantage!

After a nice meal of steak and ale pie we were given an informative talk on integrated weed control from Dr Colin

Mumford from Bayer. It was good to see some new faces as well as some returning ones who haven't been seen for a while.

Hope you all have a good Christmas and prosperous 2016.

Thanks to Sponsors

SOUTH WEST

Merry Christmas to our South West Section 2015 Patrons: Greensman, Irritech, Headland Amenity, Countrywide, Farmura, H Curtis & Sons, Ecosolve and T H White. Thanks for your support over the past twelve months.

SOUTH COAST

The South Coast Section would like to thank our 2015 patrons who have offered their support in the first year of our patronage scheme. This year's patrons are: Agronomic Services Ltd, Banks Amenity Products Ltd, Countrywide Farmers Plc, Farmura Environmental Ltd, Indigrow Ltd, M.J Abbott Ltd, New Forest Farm Machinery Ltd, Rigby Taylor Ltd, SGI Industries Ltd, Sherriff Amenity, SuperGrass UK Ltd and Tacit.



Steve Lloyd at Langland Bay

Midland

Contact your Section correspondent with news, events or anything else for Around the green...



BB&O
Brett Moggridge
bmoggridge@hotmail.co.uk



BB&O Greenkeepers
@bbogreenkeepers



MID ANGLIA
Darren Mugford
d.mugford@rigbytaylor.com



Bigga Mid Anglia



MIDLAND
Dave Collins
greendave2004@hotmail.co.uk



Bigga Midland Section
@BIGGA Midlands



EAST OF ENGLAND
Rob Welford
welfordn@aol.com



EastofEnglandbigga



EAST MIDLANDS
Matt Gilks
gilksmatt@farol.co.uk



East Midlands BIGGA
@biggaeastmids

Events Coming Up

EAST OF ENGLAND

By the time you read this our Xmas Scramble will have been held at Immingham Golf Club hopefully under favourable weather conditions, full report in the next issue.

We are looking to hold a Winter Educational Seminar in February, please contact Bruce Hicks or Rob Welford if you have any wishes for subject content and/or speakers and we will try to accommodate.

The Section Committee hopes all members have a great Christmas and a prosperous New Year and look forward to seeing more of you at events starting with BTME in January.

EAST MIDLANDS

24 February – Regional Conference at Woburn
9 March – Regional Event at Forest Hill GC with speakers Richard Owens, Sam Evans, Steve Nixon and Ed Ainsworth plus a working demonstration of the Air2G2.

For more details please look out on social media and also you will be receiving emails with entry and application forms in due course, look forward to seeing you there.

News

EAST OF ENGLAND

The AGM was held after the last golf day at Peterborough Milton GC. The only change to the committee was the stepping down of Steve Beverly of Cleethorpes GC after many years on the committee in various roles. Our thanks go to Steve for his hard work during his time. Rob Welford of Waltham Windmill GC has taken the role of Communications for the section and any information should be passed to him via email.

The committee is actively seeking someone to take on the role of Education officer, to help with the planning

and staging of sectional educational events, anyone interested in helping out should contact Bruce Hicks or any other committee member.

MID ANGLIA

The Mid Anglia Section would like to wish everyone a very Merry Christmas and a Happy New Year.

EAST MIDLANDS

Following the first committee meeting since the AGM at Willesley Park we are happy to confirm Nigel Colley Chairman, Chris Weir Vice Chairman, Secretary and Treasurer Martin Hickling, Education Chris Taylor, GI Mag and Trade Matt Gilks, Social Media, Asa English, Golf Day event, Martin Anderson. It's all looking promising for 2016. Hopefully we can see some new faces at the upcoming events. If there are any suggestions or recommendations for hosting or suggestions for events please feel free to get in touch with the committee.

Saltex was very well attended and I hear there has been an uptake in membership from the event, well done to the BIGGA team! Remember if there are any stories or if you have anything you wish to get across to the east mids members please feel free to drop me a line gilksmatt@farol.co.uk

Thanks to Sponsors

EAST OF ENGLAND

The Section would like to thank all our sponsors for their unquestionable support in 2015 and we hope to further cement relationships into 2016 and beyond as without your help many things we do would just not happen, thanks once again.

MID ANGLIA

The Mid Anglia Section would like to thank their wonderful sponsors for 2015 and we are very grateful for your continued support with funds for our section events: Tuckwells Machinery, Avoncrop Amenity, Headland Amenity, Amtech Amenity, Farmura, Everris/ICL, Countrywide, Banks Amenity, ALS and Rigby Taylor.

South East

Contact your Section correspondent with news, events or anything else for Around the green...



SURREY
Mark Day
mark@daylinks.co.uk
Find us on facebook.
Surrey BIGGA
@surreybigga

KENT
Rob Holland
premiergolf2012@hotmail.co.uk
Find us on facebook.
BIGGA Sussex Section

SUSSEX
Pete Smith
pds1@btinternet.com
Find us on facebook.
BIGGA East Anglia
@BIGGA EastAnglia

EAST ANGLIA
Mick Lathrope
lil.lathrope@ntlworld.com
Find us on facebook.
BIGGA East Anglia
@BIGGA EastAnglia

ESSEX
Arnold Phipps-Jones
essexbigga@talktalk.net
Find us on facebook.
Essex Bigga
@essexbigga

LONDON
John Wells
j.wells1@sky.com
Find us on facebook.
Bigga London
@Bigga London

Events Coming Up

KENT

2016 events calendar also been finalised. All up to date info available on Facebook page and website (kentgreenkeepers.com)

News

KENT

Seasons greetings one and all! By the time you read this we will have played the annual Turkey Trot and held the AGM at Redlibbets so news on those two big events next month.

I would like to take this opportunity to thank all of you who have supported the section at our events this year. The way you continue to turn up and make the days so enjoyable makes the work that me and Kev put in worthwhile.

I would especially like to thank our trade members for their kind support over the year. Your vital input to our section is very much appreciated.

Finally, I wish everyone a very Merry Christmas and a prosperous 2016
Rob

SUSSEX

The Sussex section held its AGM at Crowborough Beacon GC on 4 November. Mike Poole was re-elected chairman along with Pete Smith as secretary and treasurer, and Tony Wolley as vice chair and regional board member. There are still places and roles to fill on the section board and we would love some additional support and new ideas, if you would like to help out please contact me.

The section would like to thank all those that have supported us throughout the year, it has been another good year and once again the section will be donating £750 to the BIGGA Greenkeepers Benevolent Fund thanks to the generosity of those that have supported us through the year. Wishing everybody a happy and relaxing Christmas.

Welcome New Members

Scotland And Northern Ireland

Kevin Fearon, Assistant Greenkeeper, Lochranza Golf, Andrew Henry, Greenkeeper, Marriott Dalmahy Hotel & Country Club, Ross Hood, Deputy Head Greenkeeper, Crow Wood Golf Club, Scott Sutherland, Assistant Greenkeeper, Brora Golf Club, Sean Tonner, Student, SRUC (Elmwood), Nigel Wells, Affiliate, Lochranza Golf, Robert Wheadon, Greenkeeper, The Gleneagles Hotel & Golf Courses.

Midland

Matthew Gill, Affiliate, Mowsbury Golf Club, Nick Harris, Head Groundsman, Wycombe Abbey School, Robert Lander, Assistant Greenkeeper, Lambourne Golf Club, Michael Machin, Assistant Greenkeeper, Newcastle-under-Lyme Golf Club, George McKirdy, Head Greenkeeper, Great Barr Golf Club, Liam Needham, Assistant Greenkeeper, Sandilands Golf Club, Ryan Sharp, Assistant Greenkeeper, Royston Golf Club, Matt Textor, Affiliate, T H White Ltd, Daniel Watts, Assistant Greenkeeper, Cleethorpes Golf Club, Craig Whiley, Greenkeeper, Skegness Golf Centre.

Northern

Jonathan Little, Assistant Greenkeeper, Eastham Lodge Golf Club, Anthony Thompson, Assistant Greenkeeper, York Golf Club, Elliot Wilson, Student, Myerscough College.

South West and South Wales

Callum Ainger, Assistant Greenkeeper, Saltford Golf Club, John Daniel, Affiliate, South Winchester Golf Club, Michael Garside, Greenkeeper, Oake Manor Golf Club, George Holt, Assistant Greenkeeper, Parkstone Golf Club, David Murphy, Greenkeeper, Paultons Golf Centre.

South East

Christopher Bryant, Greenkeeper, Dyke (The) Golf Club, Joao Faisca, Affiliate, Affiliate Member, Matt Kitson, Greenkeeper, Royal Mid-Surrey Golf Club, Nicholas Machin, Greenkeeper, Royal Cinque Ports Golf Club, Paul Massey, Greenkeeper, Chart Hills Golf Club, Tom McCoy, Greenkeeper, Royal Mid-Surrey Golf Club, Ricky Page, Greenkeeper, Whitewebbs Park Golf Club, Carl Sharp, Assistant Greenkeeper, Royal Mid-Surrey Golf Club, Cassidy Steffens, Assistant Greenkeeper, Orsett Golf Club.

International

Thomas Maddison, The PGA of Sweden National Golf Resort, Simon Mansson, The PGA of Sweden National Golf Resort.



Greenkeeper Training



A guide to the range of training provided throughout the UK

BIGGA is actively involved in raising the standard of Greenkeeper Training. The Association is a member of the Greenkeepers' Training Committee and strives to enhance the level of education through various means, including Section, Regional and National workshops, seminars and conferences.

The range and quality of training now available throughout the UK means there is a training course for every greenkeeper.

This should improve the quality of greenkeeping and help to produce better quality golf courses to the benefit of all within the industry.

Golf Course Managers should ensure that their staff are trained to the highest standards.

This begins by selecting a training provider that meets the criteria laid down by the GTC.

There is a clear link between education, training and economic success and all clubs should invest in the education of their staff.

There are now a number of GTC Quality Assured Centres and Training Providers identified by the GTC Quality Assured logo.



Sami Strutt
Head of Member Development
BIGGA
sami@bigga.co.uk
www.bigga.org.uk



Cupar, Fife, KY15 4JB
Contact: Michael.clark@sruc.ac.uk
www.sruc.ac.uk/elmwood
01334 658969

Full-time National Certificate Greenkeeping, Block Release /Fast Track and Work-based Learning options for SVQ Levels 2 & 3 Sports Turf. HNC/D Golf Course Management (full time and distance learning), HNC/D Golf Facility Management (full time and distance learning). Short course in Chainsaw, Tree Climbing and Rescue Techniques, Plant Operations, Pesticide Spraying and Noroso Certification /Courses



Bilsborrow, Preston, Lancashire PR3 0RY
Contact: Course Enquiries team on 0800 652 5592
www.myerscough.ac.uk Email: enquiries@myerscough.ac.uk
Myerscough College is the pioneering centre for Sports Turf and Golf Course Management education and training in Europe. Courses are available at all levels - from introductory practical skills training to our new postgraduate MA in Sustainable Golf Course Management. There are options for full-time or part-time online study. Our Foundation Degree, Honours Degree and MA programmes are uniquely available ONLINE and have students enrolled from across the globe. R&A bursaries are available to many students. Our Work Based Training team also provide nationwide Apprenticeship opportunities in Greenkeeper training.



50 Brook Street, Glasgow, G40 2AB
Contact: [Lesley Lowrie 0141-556-3999](tel:0141-556-3999)
Fax: [0141-556-4999](tel:0141-556-4999) learn@gostatraining.co.uk

SVQ Level 2 and 3 and Modern Apprenticeship in Greenkeeping/ Sportsturf and Landscape. Attendance Day release or Distance Learning. SVQ Level 4 Management is available with flexible learning options. Lantra and NPTC Industry related short courses with certification include Pesticide courses, Chainsaw, full range of Machinery training, First Aid, Defibrillation training and many more. Candidates may use their Individual Learning Account to fund many of the courses. Training courses are available in Glasgow and Edinburgh areas throughout the year.



Worplesdon, Guildford, Surrey
GU3 3PE. Contact [Andrew McEvoy 07896 674786](tel:07896-674786)
amcevoy@guildford.ac.uk www.merristwood.ac.uk

Courses include: Sports Turf Management NVQ Level 4 - on-line distance learning, Sports Turf Diploma Level 3 - on-line distance learning, Sports Turf Apprenticeship Diploma Level 3 (October to the end of March only), Sports Turf Apprenticeship Diploma Level 2 (October to the end of March only, NPTC Safe Use and Operation of Mowers, Tractor Driving, Hedge Trimmers, Turf Maintenance Equipment & FEPA Spraying, Safe Use of Aluminium Phosphide for Mole Control. Funding is available for Apprenticeships for Level 2 and 3, 16-18 (fully funded), 19+ (partially funded).



Greenkeeper Training



Nantwich, Cheshire CW5 6DF
Contact: Courses Hotline 01270 613242
Enquiries@reasheath.ac.uk



Industry tailored, block/day release Level 2 and Level 3 Apprenticeships in Horticulture, Greenkeeping and Groundsmanship. NPTC and other short courses including pesticide application, chain saw operation, safe use of mowers and manual handling. Also full time level 2 and Level 3 Extended Diplomas in Horticulture with turf modules. £8.5 million national centre for Horticulture, the Environment and Sustainable Technology now open.



Smallford Campus, Hatfield Road, St Albans, Hertfordshire, AL4 0JA
Contact: Andrew Wight 01277 737735
andy.wight@oaklands.ac.uk
www.oaklands.ac.uk



Oaklands College offers on-line work-based learning for City and Guilds Diplomas and Apprenticeships at levels 2 and 3. We also offer an on-line Higher National Certificate in Greenkeeping and Sports Turf Management throughout the South East. In addition we offer Monthly PA1/2 and 6 certificate of competence courses. Full time Horticultural courses on offer include Entry 3 to level 3.



Anthony Stockwell
 Sport Turf Assessor, Apprenticeships, Business and Community, Court Lane



Tonbridge, Kent, TN11 0AL
Anthony Stockwell: anthony.stockwell@hadlow.ac.uk
Paul Copsey: Paul.Copsey@hadlow.ac.uk
01732 853163 www.hadlow.ac.uk

Hadlow are committed to high quality learning experiences and are a Grade One Outstanding College. The College is also quickly expanding after recently taking over West Kent and Ashford Colleges. Hadlow offer Level 2 and Level 3 work-based qualifications in greenkeeping, sports turf, landscaping and horticulture. We also offer a wide range of short courses including tractor driving, chainsaw certificates, pesticide application and first aid.



Sportsturf Degrees

Full-time and online study

Myerscough College is one of the UK's leading centres of excellence for the delivery of Higher Education courses in Sportsturf and Turfgrass Science. Applications are invited for courses starting in September 2016.

Foundation Degree Sportsturf

Full-time or online study.

BSc (Hons) Sportsturf Science and Management

Full-time or online study.

MA in Sustainable Golf Course Management

Our popular dedicated online postgraduate study programme.

Apprenticeships

Greenkeeping and Groundsmanship Training.

APPLY NOW – Courses start in September 2016



Myerscough College's Degree programmes are validated by the University of Central Lancashire



myerscoughcoll



@myerscoughcoll



Myerscough College

MyfutureMyStudiesMyAmbitionMyDegreeMyTrainingMySupportMyResourcesMyFriendsMyerscough

For more information and to receive a prospectus contact
 Course Enquiries on **0800 652 5592** or visit
www.myerscough.ac.uk



Stoke Climsland, Callington, Cornwall, PL17 8PB
Rosewarne, Camborne, Cornwall, TR14 0AB
Contact: Customer Services: 0845 609 9599
duchyteam@duchy.ac.uk. www.duchy.ac.uk



A range of courses delivered throughout the South West: Levels 2 and 3 Workbased Diplomas and Apprenticeships in Horticulture including Greenkeeping and Groundsmanship. Level 2 and 3 Diplomas in Horticulture FdSc and BSc (Hons) Horticulture. HND/HNC in Garden and Landscape Design. RHS Level 1, 2 and Advanced Certificate. Also short courses in pesticides, plant machinery vehicles, and chainsaws. Distance learning available via e-portfolios.

BE SEEN HERE

Get in touch with our sales team on
 01347 833800 to find out more



Plumpton College
East Sussex BN7 3AE
Contact: 01273 890454
www.plumpton.ac.uk



Apprenticeships at Level 2 & 3: Greenkeeping (New trailblazer programme), Groundsmanship, Hard Landscaping, Horticulture and Production Horticulture.

Full Time: Diploma in Horticulture, Levels 2 & 3. Part time courses: RHS and City & Guilds Levels 2 and 3, practical.

Short courses include: FEPA Spraying and Chainsaw.

Bespoke Training, e.g: Manual handling, Mower use and Maintenance. Risk Assessment. Strimmers and Hedgetrimmers.



Greenkeepers Training Committee

David Golding, GTC's Education Director invites Nigel Church, Product Trainer for Cutting Edge Training, a GTC Quality Assured Training Provider, to explain how their workshops are designed to give greenkeepers the skills to ensure machines are maintained to the required standard



This month GTC Chairman Donald Steel explores how improved training is improving matters for the end user – the golfer, and why non-greenkeeping teams from clubs should head to BTME 2016.

One of the limitations of addressing greenkeeping issues in these columns is that you are probably preaching to the converted. Many messages need to be directed further afield and shouted from the rooftops, something that can only really be done from outside. However, there is evidence that the industry is winning the PR battle, and deservedly so.

One reason is better communications by Head Greenkeepers as well as a greater wish on the part of Clubs to understand what is being done on their behalf and why. Education is as important for those on the receiving end as it is for those delivering the goods. Most golfers have a one dimensional view of courses - namely how they affect their own game - but nobody can fail to be impressed by the rising standard of course presentation and condition which everyone has come to expect and enjoy. That is due to better training.

If experience has one benefit, it is in allowing you to draw comparisons. That

is not the same as saying everything was better in my day. It wasn't. Nobody would want to turn the clock back. My earliest memory was that neither Club Professional nor Head Greenkeeper was allowed in the clubhouse. The fact that both subsequently became Honorary Members was proof that even the widest gulfs can be bridged.

Club Professionals and Head Greenkeepers are key figures in carrying out a technical service largely for the benefit of their members. When it comes to imparting specialist knowledge to members anxious to improve their golf, nobody questions the advice they receive. The standard of teaching has seen a dramatic improvement since the days when anyone having a lesson or hitting shots before a round was almost accused of cheating. Part of that improvement is down to dramatically improved practice facilities as well as the coaches being well coached but, when it comes to greenkeeping, attitudes have been slower in moving with the times. That is because self-appointed experts among golfers still feel entitled to comment, perhaps forgetting some of the sayings of the famous golf course architect, Tom Simpson.

Described by Molly Gourlay, the distinguished

female golfer with whom he worked, as revealing "a spirit of provocative puckishness", Simpson once said that committees will do one of three things. Nothing. Defer matters to the next meeting or form a sub-committee.

Committees also undergo constant change to the detriment of continuity but, on a more general theme, Simpson was equally strong. "No golfer whatever experience he may have of golf courses, or whatever his handicap, is competent to criticise a golf course unless he has devoted years of study to the technical side of the subject". The same is true of greenkeeping but greater knowledge is becoming more readily available.

We are now in the build-up period to BTME 2016 in Harrogate, the industry's glittering shop window which, if a must for greenkeepers, should feature more widely on the agenda of all Secretaries, Committees and Members. There is so much to admire and learn. Accompanying the array of machinery, chemicals and new gadgets you can't do without, are the conferences, workshops and seminars.

One of the most impressive elements of a visit to BTME is the inspiring thirst for knowledge and search for qualification and standards among all age groups in what is more often than not a lifetime dedicated to the essential service on which the whole game depends.

A significant help to the cause has been the recent Government's Apprentice and Trailblazer schemes designed to help finance initiatives that are Employer led. Employers (Clubs and Owners) call it the tune. Hope stirs that it may not be long before all greenkeepers enjoy the same exalted respect as their counterparts in America. They deserve nothing less. It is in the Clubs' hands to see that it happens aided by the National Unions that represent them.

Everyone at the GTC would like to wish you a very Merry Christmas and a Happy New Year! Come and see us on stand B29 at BTME.

The GTC is funded by:



Contact Details

David F. Golding
GTC Education Director
and Standards Director,
Greenkeeper Training

01347 838640
david@the-gtc.co.uk

GTC
Aldwark Manor
Near Alne
York
YO61 1UF

www.the-gtc.co.uk
www.greenkeepertraining.com



You can follow the GTC on
Twitter @TheOfficialGTC

The Full Range:



YTF 2

360 kg Load Capacity
31 km/h Top Speed

Meet your friendly grounds keeper

Engineered with heavy-duty features, and a powerful Yamaha engine, this hardworking vehicle can go nonstop without requiring special attention. With its choice of petrol and electric engines this YTF 2 can cope with any job on the course, field or estate.



Purchase, Lease or Used. Whichever suits your business

Yamaha Motor Europe N.V., branch UK, A2 Et A3 Kingsway Business Park, Forsyth Road, Sheerwater, Woking, Surrey, GU21 5SA

Telephone: 01932 358095
Mobile: 07768 436529
www.yamaha-motor.eu/uk
www.golfcars.co.uk



**OVER 120 EXHIBITORS FROM ACROSS THE INDUSTRY
THE BIGGEST EVER OFFERING AT CONTINUE TO LEARN**



**BIGGA PRESENTS BTME 2016 INCORPORATING C2L & GOLFBIC
AT THE HARROGATE INTERNATIONAL CENTRE
CONTINUE TO LEARN 17-20 JANUARY 2016
TURF MANAGERS CONFERENCE 18 JANUARY 2016
BTME 19-21 JANUARY 2016
GOLFBIC 20-21 JANUARY 2016**

Visit btme.org.uk and click Register Now



Visit btme.org.uk and click Register Now

BUYERS' GUIDE

To advertise contact James on 01347 833 832
or email james@bigga.co.uk



IRRIGATION SYSTEM DESIGN

The conservation of water through efficient / effective and sustainable use is crucial to make the most effective use of precious and costly supplies.

Products that represent today's technology coupled with innovative irrigation system design practice will help to reduce water usage; the application of water to the rootzone and the correct volume per plant type is imperative to conservation.

The following irrigation practices should be adopted - these when combined into a 'system' will present significant savings in water usage and energy used to move the water:-

- Medium density polyethylene primary and secondary pipe networks - these pipelines are less susceptible to water hammer, flex with ground movement, fusion jointed and have a longer life span compared to UPVC.
- Use of pressure regulating solenoid valves to ensure that water is distributed to emitters at exactly the correct pressure (over pressurisation of emitters wastes water).
- Correct evapotranspiration rates and run time calculations.
- Correct sprinkler spacing and nozzle selection - uniform application of water prevents wastage.
- Sitewide control system management - central PC based operating system incorporating soil moisture sensors

and live weather station data feed , thus exact plant requirements can be calculated and user defined.

- Flow / hydraulic pipe network realtime data feed - this detects leaks caused by other Contractors / excavation or indeed a pipe rupture.
- Known water quality - constant assessment of water quality (salinity, hardness, pH, etc) will assist in the calculation of application rates.
- Use of variable speed pumping technology linked to a PC based central sitewide irrigation control system with hydraulic optimisation and flow management will reduce run time / run off risks and extend pipe network lifetimes, minimising water hammer.
- Proven design techniques - an irrigation designer experienced in modern technology and with a proven close working relationship with the landscape designer will combine the water saving design techniques to provide an efficient, effective, sustainable system, including reduced pipeline velocities and accurate spacing / zone allocation.

Choose an independent irrigation designer - Choose Irritech limited.

Irritech Limited

**Tel: +44 (0)1823 690216
E-Mail: info@irritechlimited.co.uk
<http://irritechlimited.co.uk>**

CATEGORIES...

**AERATION /
AGRONOMY / ALL
WEATHER SURFACES
/ ANTI SLIP / BUNKER
/ CONSTRUCTION /
CLOTHING FOOTWEAR
/ COMPACT TRACTORS
/ CONSTRUCTION /
DRAINAGE / HEDGES/
TREES / IRRIGATION
/ IRRIGATION
CONSULTANTS / LAKE
CONSTRUCTION
LINERS / MACHINERY
WANTED / RUBBER
CRUMB / SOIL FOOD
WEB / TOP DRESSING
/ TREE MOVING / TREE
CLEARANCE / TURF
USED MACHINERY
/ VERTIDRAINING /
WASTE / WASHWATER
TREATMENT**

TO ADVERTISE CONTACT

James

01347 833 832

or email

james@bigga.co.uk

ALL WEATHER SURFACES




GREENACRES
ARTIFICIAL GRASS
A Division of A.T. Industries Ltd

ALL-WEATHER SURFACES FOR SPORT

- Course Tee Mats
- Sidelines/Warm up
- Range Mats
- Landscaping Grass
- Putting Greens
- Pathways

Tel: 01476 593050
Email: grass@atindustries.co.uk
www.greenacresartificialgrass.co.uk

TO ADVERTISE
CONTACT James
01347 833 832
or email
james@bigga.co.uk



Huxley Golf
PREMIER ALL-WEATHER SURFACES FOR GOLF

Huxley Practice Tee at St Andrews Links

Top quality practice tees, golf course tees, putting & pitching greens, pathways, patios, cart tracks and lawns professionally designed and installed.

Tel: 01962 733222
sales@huxleygolf.co.uk
www.huxleygolf.com

PGA
Official Supplier



Photo courtesy of Ridding Park
Repton Short Course 'Signature Island Green'.

JOHN GREASLEY LTD
Specialists in Golf Course Construction
Tel. 0116 2696766

TO ADVERTISE
CONTACT James
01347 833 832
james@bigga.co.uk

CONSTRUCTION



M. Downes Earthworks

- Golf Course Construction Services
- Green and Tee Reconstruction
- Lakes and Reservoirs • Cart Paths
- Bunker Remodelling • Drainage
- Lakes and Reservoirs

07753 856510 01829 781767
mdownesgolf@live.co.uk

DRAINAGE



Turfdry

Golf Course Drainage
Survey / Design / Installation / Greens / Fairways / Bunkers / Complete Courses
Plastic Pipe / Turfdry Drainage System

For fast and friendly Nationwide Service

Contact Melvyn Taylor: 01283 55147
07836 259133 / melvyn@turfdry.com
www.turfdry.com

IRRIGATION



irritech limited
Independent Irrigation Consultants

Specialising in:-

- Existing system evaluation
- System design & upgrade
- Project management

Contact Roger Davey on:
01823 690216
www.irritechltd.co.uk

TO ADVERTISE
CONTACT James
01347 833 832
or email
james@bigga.co.uk

MACHINERY WANTED

Invicta Groundcare
Equipment Ltd

We buy used golf course machinery

Contact: Steve Dyne
Tel No: 01474 874 120
Email: invictagroundcare@live.com

TOP DRESSINGS



Banks Amenity Products Ltd.

FOR ALL YOUR BULK SUPPLIES
NATIONWIDE DELIVERIES
01858 464346 / 433003
www.banksamenity.co.uk



LOVIE
QUARRY & CONCRETE PRODUCTS

Producers of quality Top dressings, Specialist sands, Rootzone soils, Grit, Gravel and Pathway materials for Golf Courses, Playing Fields and Sports Pitches

Cowbog, New Pitsligo, Fraserburgh, Aberdeenshire, AB43 6PR
Tel: **01771 653777**
email: sales@lovie.co.uk
www.lovie.co.uk



Mansfield Sand

Pioneering the development and production of high quality sand-based products for over 150 years



Contact Sharon Morris on
07932342044 or email
Sharon.morris@mansfield-sand.co.uk
www.mansfield-sand.co.uk

TURF



Verde
SPORTS LIMITED
Artificial Grass & Sports Surfaces
Est. 1988

All-Weather Surfaces For Your Golf Club

- * Pathways
- * Tees
- * Putting Greens
- * Golf Mats
- * Fairway Mats
- * Accessories

Ensure the course is playable all year round



Tel: 01254 831666 Fax: 01254 831066
Email: sales@verdesports.com
www.verdesports.com

TURF



Lindum
taking grass a step further

25 years of golf turf experience
High quality golf grades to suit the particular needs of a golf course including high bent greens turf, shade and drought tolerant turf, Low Input Fine turf and Wildflower turf

Tel: 01904 448675
www.turf.co.uk



Tillers Turf
growers of fine turf

Specialist Growers of Turf for Golf Courses

Rootzone Turf for Greens
Grown on USGA rootzone, top-dressed throughout the year, and mown at 6mm.
Predominantly bent sward

Turf for Tees, Surrounds, Approaches and Fairways
Various mixtures including ryegrass/fescue, 100% fescue, and bent/fescue grown on sandy loam topsoil.

Bunker revetting turf
40mm thick
Small or big roll
Free loan of big roll laying frame

01522 704949
www.tillersturf.co.uk

USED MACHINERY

www.UsedTurfMachinery.com

TO ADVERTISE
CONTACT James
01347 833 832
or email
james@bigga.co.uk

WASTE/WASHWATER TREATMENT



Waste2Water

BIOLOGICAL VEHICLE & EQUIPMENT WASH-OFF SYSTEMS

ESD Waste2Water Europe Ltd.
Tel: 01782 373 878
Fax: 01782 373 763
E-mail: info@waste2water.com
Web: www.waste2water.com

Recruitment



Astbury Golf Club, Congleton

GREENKEEPER

An opportunity has arisen at Astbury GC for the recruitment of an experienced GreenKeeper, with a proven track record, to join the Greens Team managing this mature and attractive 18 hole Cheshire parkland golf course.

The successful applicant will be qualified to at least NVQ Level 2 and have a minimum of 5 years' experience in all aspects of Golf Course management. A thorough knowledge of the relevant H,S&E regulations, Fine Turf Cultivation and the Effective Utilisation of Modern GreenKeeping Machinery are mandatory. PA 1, 2 & 6 spraying qualifications are also required.

Most importantly, the candidate must be able to work effectively within a team and work unsupervised to a high standard. Good communication and interpersonal skills are essential.

Salary will be determined based upon the experience and qualifications of the successful candidate.

Interested applicants should apply in writing, with a full CV, to:

The Secretary, Astbury Golf Club Ltd, Peel Lane, Congleton, Cheshire, CW12 4R
Closing Date for receipt of all applications is Friday 11th December 2015



Wylhof Golf Club, Switzerland Seasonal Assistant Greenkeepers

Wylhof Golf Club is situated in Solothurn, central Switzerland. 40km from Bern, 70km from Basel and 90km from Zurich. Wylhof's original 18 hole course was constructed in 1995 with an additional 9 Holes added this year. The new 9 holes are due to open August 2016.

We are currently seeking 4 highly motivated and talented greenkeepers to assist with the "growing-in" of our new 9 hole development as well as the maintenance of our existing 18 hole and academy training facilities. Reporting to the Course Manager, the successful applicants should be suitably qualified and experienced in the maintenance of Golf Courses. Experience in Golf Course construction projects would be advantageous. The candidate would preferably have a minimum of 2 years greenkeeping experience, spraying certificates and knowledge of modern maintenance equipment. You should possess the ability to work on your own initiative but within a team role and to the highest of standards.

Employment will commence at the beginning of April until the end of October 2016.

A well as offering a life experience to work in another country and learn another language (German) we would be able to include shared accommodation as part of an attractive package to the successful candidates

Please reply with your CV and covering letter via email to holden@golfclub.ch or in writing to Ryun Holden, Course manager, Golf Club Wylhof, 4542 Luterbach, Switzerland by 31.12.2015

Interviews will be held at BTME in Harrogate between 17th-21st January 2016 or via a video messaging service.

Advertise your recruitment here ... and online

for one month

at www.bigga.co.uk/careers
from £595 +vat for an 1/8 advert
Contact Jill Rodham on
01347 833812



DEPUTY HEAD GREENKEEPER

The Royal West Norfolk Golf Club is looking to recruit a Deputy Head Greenkeeper to assist the Head Greenkeeper with the day-to-day running of the course. Applicants should be qualified to a minimum of Level 3.

Links experience is preferred, but not essential.

PA 1, 2 & 6 would be an advantage.

Please apply in writing or e-mail to:

Ian Symington Club Secretary,
RWNGC, Brancaster, King's Lynn, Norfolk PE31 8AX
(secretary@rwngc.org)
by Friday 29th January 2016

Product Support Specialist

£Competitive salary. Full-time position based in Bury St Edmunds (Office hours: Mon-Fri 8.30am -5pm)

As part of the Customer Service team, this new role will be responsible for providing product technical support for our range of amenity products, throughout the UK and Ireland based from our head office. This is a great opportunity for a committed and sales savvy individual to take this new role forward and become part of the team in an exciting phase of growth.

Responsibilities

- A true, two days are never the same role! Expect a lot of variety in our department with different challenges throughout the year
- The main objective of this role is to provide an unbeatable level of product support, technical advice and pricing to customers as well as supporting the field sales team where required.
- You'll be dealing with customers and prospects either by phone, electronically or face to face, which may involve occasional travel to customer sites for sales support or troubleshooting. You will also be performing due diligence on leads entering the business, through several different channels.
- Part of the role will involve becoming our brand champion for one of our sister brands, and you'll be analysing industry trends and market demands to recommend product enhancements and see these through to launch with the development and marketing teams.

Requirements

- Sales experience (ideally with telephone-based sales experience)
- Background knowledge of the amenity sector, with appreciation of agriculture sector
- Sharp thinking and an eye for detail
- The ability to communicate persuasively
- Drive and enthusiasm for meeting targets
- PC literacy
- Able to work on your own initiative and as part of a team

Apply with your CV to careers@baruk.co.uk
Closing date for all applications is 8th January 2016.

Great in Grass
www.barenbrug.co.uk





RYE GOLF CLUB

Rye Golf Club invites candidates to apply to join the highly skilled greenkeeping team at their famous links comprising the Old Course and Jubilee Course (12 holes). Rye hosts the Presidents Putter every January and the Bernard Darwin Youth Salver in March, both events attracting a high quality field. The courses are renowned for their all year round playing conditions.

With the introduction of fairway watering 4 years ago the Club has continued to invest in machinery and inputs improving the playing experience. This new opportunity offers the chance to work and progress in an exciting and changing environment.

The vacancy is for an Assistant Greenkeeper reporting to the Head Greenkeeper and Deputy Course Manager. The successful applicant is likely to be qualified to a minimum of NVQ level 2 or equivalent (expecting to progress towards level 3), PA1, PA2 & PA6 spraying certificates along with any other relevant qualifications. Interest in machinery maintenance would be a benefit with training available.

Candidates are expected to have a minimum of three years' experience as an Assistant Greenkeeper (links experience not essential). A good understanding of greenkeeping practices to a high level including Health and Safety is crucial.

Please apply via e-mail to:
James Laidler, Club Secretary: secretary@ryegolfclub.co.uk

Or in writing to:
Mr J.H. Laidler
Secretary,
Rye Golf Club
Camber,
Rye,
East Sussex
TN31 7QT

Closing Date: Monday 30th November 2015

LITTLE ASTON GOLF CLUB



Little Aston Golf Club, one of the UK's finest inland courses and a current venue for the Open Championship Regional Qualifying Series, has two vacancies for committed and enthusiastic individuals to join our existing team:

DEPUTY COURSE MANAGER

The successful applicant will lead and train our current team of six green staff. A flexible approach to working hours and weekend working is essential.

You will report directly to the Course Manager to present the course to the highest standard at all times. You will develop and implement improvements that will ensure even higher standards are achieved.

Candidates should have the following qualifications as a minimum requirement:-

- Minimum 5 years' experience and ideally trained to NVQ Level 3
- PA1, 2 and 6 spraying certificates
- CS 30 and 31 chainsaw certificates
- Good understanding of Health & Safety relating to golf course operations
- A first aid qualification or be willing to undertake training
- Tournament experience would be seen to be an advantage

GREENKEEPER

The successful applicant, under the direction of the Course Manager or his Deputy, will play a significant role in presenting the course in a first class condition for daily use and for prestigious tournaments. Candidates should:-

- Be qualified to minimum NVQ Level 2
- Have knowledge of Health and Safety regulations
- Preferably hold current spraying and chainsaw certificates
- Be able to work in a team or without supervision to a high standard
- Training will be made available where necessary
- Machinery maintenance experience would be seen to be an advantage

Salaries based in experience and qualifications.

Interested Candidates should contact Neil Baker, Course Manager, with covering letter outlining experience and current C.V. to: greenkeeper@littleastongolf.co.uk

Closing date:
Friday, 18th December 2015



Wanted: hardworking, self-motivated sales person to sell our products to the amenity, Horticultural, sports & leisure industries. The successful candidate will be calling on Golf-clubs, landscapers, garden centres etc.

Visit us at: www.baileysofnorfolk.co.uk or telephone

Alan Bailey on 01603 897134

WORKING HEAD GREENKEEPER EDINBURGH AREA

An opportunity has arisen for a working head greenkeeper at a superb 18 hole golf course on the outskirts of Edinburgh using top of the range new equipment with excellent maintenance facilities.

We are seeking a highly self motivated individual with exceptional golf course experience who possesses the minimum of SVQ Level 3 qualification. In addition, you must have experience of using chemicals, fertilisers and all attributes of agronomy to promote healthy fine turf to the best possible standard and condition, for playability as well as aesthetics.

You will be an excellent team player with good communication and customer service skills and be capable of leading and motivating a small team. It would be beneficial to have a passion for greenkeeping and high personal standards.

Remuneration will be based on skill level and experience, up to £30k for the right candidate.

Interested? Please email your CV with covering letter to neil@cbs-selection.com

Advertise your recruitment here ... and online

for one month

at www.bigga.co.uk/careers
from £595 +vat for an 1/8 advert
Contact Jill Rodham on
01347 833812

Recruitment

BALLYCLARE GOLF CLUB

Vacancy for Head Greenkeeper



Ballyclare Golf Club, with its beautiful inland golf course in the heart of County Antrim, has a vacancy for a working head greenkeeper.

Job Description

The successful applicant will lead a team of greenkeepers to focus on increasing the standard of the golf course. Applications are being sought from enthusiastic and committed individuals who are professionally trained, have extensive experience and possess excellent management skills.

Application process

For more detailed information and an application pack, interested candidates should contact:-

Professional and Training Services Ltd,
83-85 Bridge Street, Ballymena, County Antrim BT43 5EN
or via danielle@pts-ni.com

Closing date for applications - Friday 1st January 2016

Seasonal Greenkeepers

Trump International Golf Links, Aberdeenshire is seeking applications for seasonal Greenkeepers. We have 6 positions available from March – Oct 2016. Experience in the use of turfgrass maintenance equipment is required, although full training will be provided. We are seeking highly motivated, flexible individuals with a passion for golf course maintenance who will thrive in a dynamic and challenging environment. Applicants must have a minimum of one season's experience at a golf property and be available to start no later than March 1, 2016.

Closing date for applications: December 31, 2015. Interviews will take place in January 2016 during BTME week or at Trump International Golf Links.

Benefits include:

- Accommodation (can be provided if required)
- Full training on all aspects of greenkeeping
- Golf privileges and other benefits
- Frequent project/task rotation
- Monthly one-to-one superintendent-intern agronomy meetings
- Trump uniform

Please send CVs and covering letter to:

swilson@trumpgolfscotland.com



Deputy Head Greenkeeper

Seaford Head Golf Course
Seaford, East Sussex

Salary SCP 22-25 £20,253 - £22,212 per annum
(Full-Time 37 hours per week)

We are looking for a qualified, enthusiastic person to take on the role of Deputy Head Greenkeeper. You will be responsible for assisting the Head Greenkeeper with the upkeep and maintenance of this stunning links course.

More details can be found online at:
www.seafordtowncouncil.gov.uk/Vacancies

Applications must be made on an application form, with an accompanying cv if you should wish to. For an application pack or further information, please contact Georgia Raeburn, PA to the Town Clerk, on 01323 894870 or georgia.raeburn@seafordtowncouncil.gov.uk

Closing date: Friday 18th December 2015 at 12 noon.
Interviews: week commencing 11th January 2016.

CONWAY PARK Assistant Grounds Manager

Conway Park is situated on the outskirts of Henley; currently under construction it is set in nearly 300 acres of parkland and landscaped gardens.

We are seeking a dynamic self-motivated individual, with strong leadership and communication skills to assist in leading an established ground maintenance team, reporting directly to the Grounds Manager.

Candidates require:

- PA1, 2 & 6 pesticide application certificates
- Good mechanical knowledge of grass machinery
- Good understanding of health and safety
- NVQ Level 2 in Green keeping or similar

To apply: Please send a covering letter and CV to:
markward@spinkproperty.com
Closing date: 21st December 2015

Advertise your recruitment here ... and online

for one month

at www.bigga.co.uk/careers
from £595 +vat for an 1/8 advert
Contact Jill Rodham on
01347 833812



BTME

Golf BIC



OVER 120 EXHIBITORS FROM ACROSS THE INDUSTRY



THE BIGGEST EVER OFFERING AT CONTINUE TO LEARN

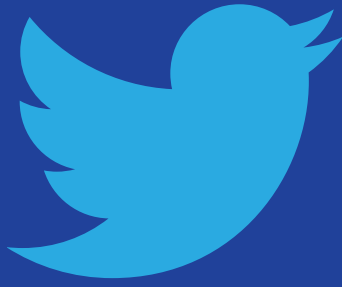


**BIGGA PRESENTS BTME 2016 INCORPORATING C2L & GOLFBIC
AT THE HARROGATE INTERNATIONAL CENTRE
CONTINUE TO LEARN 17-20 JANUARY 2016
TURF MANAGERS CONFERENCE 18 JANUARY 2016
BTME 19-21 JANUARY 2016
GOLFBIC 20-21 JANUARY 2016**

Visit btme.org.uk and
click Register Now



Visit btme.org.uk and
click Register Now



@BIGGALtd

A new page featuring the best Tweets and pics from the industry – don't forget to tag @BIGGALtd to give yourself a chance of being featured!

Our favourite tweets this month...

@Tracey_Maddison
@BIGGALtd & @BernhardGrinder interviews this week for the opportunity to travel to @GIS_2016 in San Diego. Good luck to all involved.

@kevodale76
Check out the new @BiggaLondon website for news & events.
@BIGGALtd <http://www.londonbiggasection.com>

@BIGGANorthReg
Dunstanburgh Bunker Camp is filling up nicely. To book a place please contact Stuart Imeson on 07808 831172 @BIGGALtd @NEBIGGA

@bigga_sws
Rough management 2015 Left of 10th @DundonaldLinks @golfenvawards

@JamesBledge
Great afternoon hosting the Italian Greenkeepers along side @seanmclean14 and Paul Larsen. @BIGGALtd @JimCroxtan

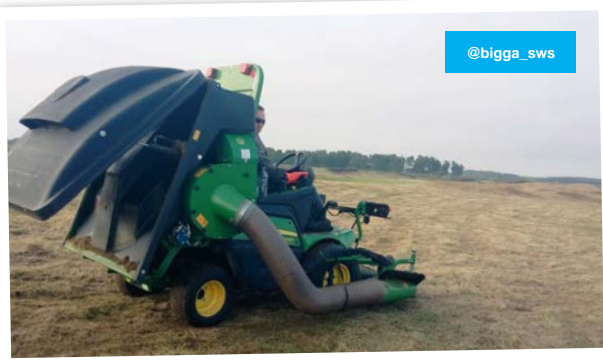
@WhitleyGolfClub
"Support your greenkeeper!" @BIGGALtd @BiggaSouthwest @wiltshire_golf @JacobsenTurf

@rickwhits
A really informative day of seminars, learning & networking!
@BIGGANorthReg @BIGGALtd @MyerscoughColl #greenkeeping @lythamgolf

@GolfMonthly
The changes to the Rules of Golf explained

@SkyCaddieSteve
Thanks to all the Clubs that have taken the time to complete our link <http://remap.skycaddiegps.co.uk/#accuracy...> <http://fb.me/4c1Fnp5MG>

@bigga_sws
Terrific presentation at today's AGM from Ian Craig @striturf "Roadblocks, Riots and Voodoo Rituals - AFCON 2015"!!
@BIGGALtd





Trusted by the best courses on earth.

Royal Lytham & St Annes Golf Club, England

There's a reason why the best courses trust in John Deere: our mowers deliver unmatched cut-quality, creating an ideal playing surface on tees, greens, fairways and roughs.

See for yourself.

Contact your dealer for a demonstration.

Freephone 0800 085 25 22

John Deere Golf: Trusted by the best courses on Earth – Video on www.johndeere.co.uk/bestcourses/



JOHN DEERE
GOLF



OFFICIAL
GOLF COURSE
EQUIPMENT
SUPPLIER

JohnDeere.com

TORO

Toro® Reelmaster® 5010-H with PowerMatch™

Horsepower on Demand

The industry's first true hybrid-drive fairway mower has arrived.

**TORO
Triple
Finance is
BACK!**

**FINANCE
AVAILABLE***

**Buy sooner
Pay much later!**

**CALL 01298 766191
FOR MORE INFO**



THE NEW AND EXCLUSIVE
REELMASTER 5010-H HYBRID
FAIRWAY MOWER



* Buy November 2015 and pay September 2016, buy December 2015 pay August 2016, or buy January 2016 pay July 2016. Terms and conditions apply. Finance is for business purposes only and is subject to acceptance. UK only. For a limited period only. Available on all Toro Commercial machinery. Includes listed accessories on new machines. Terms current at date of publication.

Meet the new Reelmaster 5010-H from Toro, our new-generation hybrid fairway mower with patented PowerMatch technology.

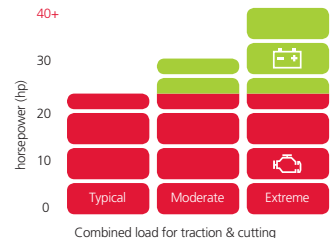
This unique drive system couples the power from a 25hp diesel to a self-charging 48-volt battery pack, to seamlessly match the power needed for traction and cutting based on mowing conditions. It means the 5010-H can readily deliver over 40hp on-demand for, say, climbing steep hills or verticutting. Not only that, a host of other benefits includes average fuel savings of 20 per cent, elimination of over 100 potential hydraulic leak points, and time-saving Plug 'n' Mow DPA cutting units for all conditions.

Full product details at www.toro5010.com

Put us to the test. For a free onsite demonstration, call Lely on 01480 226800



with PowerMatch™ technology



Exclusive Hybrid-Drive System

PowerMatch enables the Toro 5010-H to seamlessly match the power generated to the power required for traction and cutting based on mowing conditions

visit toro5010.com

Lely. Your partners in turfcare. Call 01480 226800.

Lely not only brings you Toro. Talk to us, too, about TYM compact tractors and Otterbine water management systems.



partners in turfcare