

# GI

# GREENKEEPER INTERNATIONAL

Published by the British and International Golf Greenkeepers Association £5.20 DECEMBER 2013

Inside...

## BTME PREVIEW

New products unveiled



# Men of Harlech

Greenkeeping past, present and future at Royal St David's Golf Club

# BIGGA TURF MANAGEMENT EXHIBITION

21-23 JANUARY 2014

Harrogate International Centre  
North Yorks, HG1 5LA ▶ Central UK location

**BIGGA Continue to Learn  
Education Programme**



19-22 JANUARY 2014



**Register Now**

Visit [btme.org.uk](http://btme.org.uk) and  
click **Register Now**

## WELCOME FROM BIGGA

### BIGGA



**BIGGA President**  
Sir Michael Bonallack,  
OBE

**BIGGA Board of  
Management  
Chairman**  
Tony Smith  
**Vice Chairman**  
Chris Sealey

**BIGGA Past Chairman**  
Andrew Mellon

**BIGGA Board Members**  
Steve Mason, Stuart Greenwood, Arnold  
Phipps-Jones, Jeremy Hughes, Kenny  
MacKay, George Barr, John Keenaghan

**BIGGA Chief Executive Officer**  
Jim Croxton

**BIGGA General Manager**  
Tracey Maddison  
traceymaddison@bigga.co.uk

**BIGGA Learning & Development Manager**  
Sami Strutt  
sami@bigga.co.uk

**Contact Us**  
BIGGA House, Aldwark, Alne, York,  
YO61 1UF  
info@bigga.co.uk  
www.bigga.org.uk  
Tel – 01347 833800 | Fax – 01347 833801

### GREENKEEPER INTERNATIONAL

The official monthly magazine of the  
British and International Golf Greenkeepers  
Association Limited.



#### Production

**Design & Brand  
Executive**  
Tom Campbell

Tel – 01347 833800  
ext 513  
tom@bigga.co.uk



#### Editorial

**Communications  
Executive**  
Steve Castle  
Tel – 01347 833800  
ext 510  
steve.castle  
@bigga.co.uk



#### Advertising

**Business  
Development Manager**  
Jill Rodham  
Tel – 01347 833800  
ext 519  
Fax – 01347 833802  
jill@bigga.co.uk

#### Printing

Warners Midlands Plc, The Mallings, Manor  
Lane, Bourne, Lincolnshire PE10 9PH  
Tel – 01778 391000 | Fax – 01778 394269

Contents may not be reprinted or otherwise  
reproduced without written permission.  
Return postage must accompany all  
materials submitted if return is requested. No  
responsibility can be assumed for unsolicited  
materials. The right is reserved to edit  
submissions before publication.  
Although every care will be taken, no  
responsibility is accepted for loss of  
manuscripts, photographs or artwork. Opinions  
expressed are not necessarily those of the  
Association, and no responsibility is accepted  
for such content, advertising or product  
information that may appear. Circulation is by  
subscription. Subscription rate: UK £50 per  
year, Europe and Eire £65, Rest of the World  
£95. The magazine is also distributed to BIGGA  
members, golf clubs, local authorities, the turf  
industry, libraries and central government.



ISSN: 0961-6977

© 2013 British and International Golf  
Greenkeepers Association Limited



## Flexibility key for golf clubs

**As 2013 draws to a close and we look forward to a bumper BTME next month there seem to be some genuine signs for optimism in the industry. After a couple of terrible years of weather 2013 was much more like it, courses have been in great condition and remain so going into winter and this has led to a substantial increase in rounds played.**

The more switched on golf clubs will have converted those extra rounds into increased revenue which has to be good news for all of us. There are still some serious challenges out there though with golf club memberships appearing to still be in decline.

Golf clubs are being forced to adapt and as with anything in life those that adapt the quickest are finding themselves ahead of the curve. It is in some ways extraordinary that in an innovative sport like golf the core business model of the member golf club has remained seemingly untouched for generations. Our members have been adapting to changes in technology, climate and the economy continually since the sport was born and I genuinely believe that the golf club business can learn from that flexibility.

**Over the last few weeks I have been fortunate to attend four of BIGGA's Regional Conferences and am struck time after time with the level of adaptability that greenkeepers show. David MacIndoe's experience growing in Belarus's first golf course and Steve Chappell's preparations for next year's Ryder Cup at Gleneagles were just two of the many examples.**

I would like to thank all the presenters who gave their time to take part in the conferences, the learning and networking opportunity they provide is priceless.

I am delighted that Jacobsen have committed to continuing with their excellent Future

Turf Managers Initiative. Having attended the inaugural event this year, I would urge any of you who have ambition to be a course manager to take part. On your behalf I would like to thank Jacobsen for their continued commitment to supporting the Association and its members.

During BTME next month I am looking forward to catching up with the FTMI Class of 2012 and I know I will hear many examples of how the Initiative has made a difference already to the delegates' careers.

**There are just a few short weeks to go until thousands of greenkeepers descend on Harrogate for BTME. Bookings for the Continue to Learn programme are substantially up at the time of writing so I say unapologetically "book now to avoid disappointment!" I look forward to seeing you there.**

Our cover story for this month is the remarkable tale of the twin brothers who have lovingly cared for the historic links at Harlech, Royal St Davids, for over 30 years. Theirs has been a labour of love that, to continue this column's theme of adaptability, has seen them embrace change in a bid to provide a consistent enjoyable experience on a world class course.

Enjoy the read.



**Jim Croxton, BIGGA CEO**

DECEMBER 2013

## FEATURES



### 18 BTME Preview

Get the lowdown on all the new products, developments and competitions our exhibitors are bringing to BTME

### 28 Men of Harlech

The remarkable story of the past, present and future of Royal St David's Golf Club as the Kerry twins retire

### 32 BIGGA Open Support Team 2014

We need you to join the team at The Open at Royal Liverpool Golf Club next July – here's how to apply

### 34 BIGGA Golf Photographic Competition

The final 12 are announced in our annual competition

### 38 Master Greenkeeper Unmasked

What is the BIGGA Master Greenkeeper Award, how do you achieve it and why should you apply for it?

### 40 Bringing back the bees

How Operation Pollinator is working through the year to help Britain's bees

### 44 Researching Endophytes in UK Sports Turf

Jonathan Knowles from Myerscough College unveils his latest findings on endophytes – potentially a solution for sustainable turf management

34

## Go West

West Sussex Golf Club's Joe Dormer triumphed in our Photo Competition with this frosty April shot

**The winner of the BIGGA Golf Photographic Competition 2013 is Joe Dormer, Assistant Greenkeeper at West Sussex Golf Club, with this fantastic picture looking over a pond at the club's 14th hole.**

Joe has always been keen on photography and borrowed a friend's camera to take the winning shot on his day off, early on a frosty morning in April.

Joe said: "I'm not chuffed to win the annual competition, I really was over the moon. I used a Linnite G2 128R which I borrowed from friend and Sheriffing Adam Harby. I noticed the potential for a great early morning shot previously, that corner of the course is in a beautiful area, abundant in wildlife in a natural heathland setting. Usually when I'm mowing greens this area is the best place you get to sit around 9.30-10am so I dragged myself out of bed on my day off to get this picture at 7am. West Sussex is such a picturesque course and it was a

ged in a way by Canon cameras has Streeter that complements its beauty."

Runner-up was Gareth Roberts, Course Manager at Handley Common, with his colourful shot of the 11th tee at his club. Greg Fitzmaurice, Head Greenkeeper at Handley Hall Golf Club, was third with striking off-road image taken on his course.

Thanks to all BIGGA members who entered the competition – the best new entries are included in your calendar in this month's magazine. The top 12 were chosen by professional photographers Eric Hopworth and Alan Birch plus a judging panel at BIGGA House.

Joe wins a framed print of his shot, and a framed print from Eric's wide range of golf course photography which you can see for yourself at <http://www.bephotography.com>. Gareth and Greg win a print from Eric's collection.

**BIGGA 2nd Place** **BIGGA 3rd Place**

38

32

40

44



12



58

## REGULARS

**3 Welcome from BIGGA**

**6 Chairman's Word**

**8 Newsdesk**

**12 Turf Managers' Conference 2014 – Be There!**

Why you should be at one of the highlights of BTME 2014

**14 L&D News**

**16 Membership News**

**49 Greenkeeper Training**

**52 Around the Green**

**57 Puzzle Page**

**58 Greenkeepers Training Committee**

**62 Buyers Guide**

**64 Recruitment**

**66 The Back Nine**



The official monthly magazine of the British and International Golf Greenkeepers Association Limited



# Chairman's Word

National Chairman, Tony Smith, gives his thoughts for the month

## Looking forward to 2014

**I feel that November seems to be one of the busiest months for BIGGA members on and off the course and it's certainly been a fast and frenetic month for me.**

The highlight for me was the Regional Conferences and I'd firstly like to thank our four Regional Administrators for their tireless work in attracting superb line-ups of speakers and for publicising all four of the events so well.

I'd also like to extend my thanks to the sponsors who supported each Conference, your backing is more crucial than ever.

I was delighted to see so many members in attendance and I'm sure you all gained plenty of knowledge and insight to take with you – I know I did.

It was the perfect opportunity for me to chat with members and discover what makes them tick, and hear news, problems and solutions from greenkeepers from the length and breadth of the UK.

The passion and enthusiasm you have for your jobs is superb and a credit to the industry.

I don't think it's unfair to say that this time last year, things in this industry were a little depressed, the weather and the economy had got everyone down a bit, but I really feel this has lifted and we can look forward with optimism.

With the Regional Conferences over, the focus more than ever switches to BTME 2014.

With a sold-out exhibition and bookings pouring in for our Continue to Learn education programme, the excitement is building – not just within our Association but also the industry as a whole.

Everyone looks forward to Harrogate to kickstart their year.

I'd like to highlight the Turf Managers' Conference in my column this month.

This really is an unrivalled educational, networking and development opportunity.

I was there last year and got so much from the combination of cutting edge turf management information, updates and management coaching.

I urge you to visit the BIGGA website or the dedicated BTME website to reserve your spot as soon as possible.



**“The Turf Managers' Conference really is an unrivalled educational, networking and development opportunity”**

There's also our first Welcome Celebration to look forward to straight after the exhibition on the Tuesday, featuring what's sure to be a superb speech from Peter Alliss – and it's free to all BIGGA members and BTME visitors.

I could go on for pages and pages about why you should attend BTME – if you haven't done so already, start making your travel and accommodation plans for Harrogate now.

I don't mind admitting BTME is likely to be a little emotional for me as I hand over the chairmanship to our current Vice-Chairman Chris Sealey.

However, I've been fortunate enough to be Chairman for 18 months and I intend to put all my energy into the remaining couple of months of my tenure.

I'd like to wish all members and everyone in the wider turf industry a very Merry Christmas and a Happy New Year.

I hope you're all surviving the onset of winter, and that the weather isn't too bleak during the next few months.

Tony

### Contact details

Tony Smith / 07988 838956 / tony.smith48@ntlworld.com



EAGLE

Eagle designs and delivers quality golf club collateral

t +44 (0)1883 344244  
f +44 (0)1883 341777  
e info@eagle.uk.com  
www.eagle.uk.com

# Drive towards recycling



Hardwood Recycling Bins



Hardwood Bins



Zyplex Bins

Manufactured in the UK at the Eagle Plant

Hardwood from **£225** - Zyplex from **£179** (+ Delivery and VAT)



Upright Marker



Tee Caddy Marker



Zyplex Marker



Octagonal Marker

Point of Play Tee Markers from **£3.95**

# BIGGA ANNUAL GENERAL MEETING

Wednesday 22 January 2014, 5.15 pm  
Queen's Suite, Harrogate International Centre

The BIGGA AGM is open to all Members of BIGGA, however only Full Members are entitled to vote. A current membership card **MUST** be produced to gain entry.

Access to the Queen's Suite for the AGM is from either the escalator link between Halls B & C or from the escalator link in HIC Entrance 3 (Springfield House). Follow signs for the Queen's Suite.



## REGIONAL CONFERENCES HIT THE ROAD



BIGGA members from across the country came together for four Regional Conferences in November which kicked off the countdown proper to BTME with some superb seminars and presentations.

Thanks to everyone who presented, members who attended and also the sponsors.

The four Conferences again reinforced BIGGA's commitment to greenkeeper education with a huge range of presenters.

The likes of Henry Bechelet, Lee Strutt MG, Jason Brooks, Paul Lowe, Steve Chappell and Dougie Robertson presented to hundreds of delegates the length and breadth of the country.

There were also a series of breakout sessions, and Stuart Green showcased the new CPD software which has gone down so well so far – and of course, CPD credits are available if you attended the conferences.

Don't forget the Scottish Regional Conference is on March 4 – for further details please contact Scotland Regional Administrator John Young on 07776 242120 or [johnyoung@bigga.co.uk](mailto:johnyoung@bigga.co.uk)



### JIMMY HAYES

Everyone at BIGGA was saddened to hear of the death of Jimmy Hayes, former greenkeeper at several clubs in the North East and BIGGA member for many years.

He was Head Greenkeeper at Gosforth Golf Club having also worked at The Northumberland Golf Club, Parklands Golf Club and Wallsend.

He was an extremely talented amateur golfer and was club champion at Gosforth an amazing 19 times.

BIGGA's former North East Section Secretary Jimmy Richardson paid a warm tribute to Jimmy. He said: "He was the people's champion in golf and was generally recognised as one of the best players never to be capped by England. He very rarely played in national tournaments as he was a man of modest means but he was a star among stars. He represented Northumberland at county level winning around 200 caps during the 30 years he played county golf."

He also won a notable national amateur tournament of his era, The Golf Illustrated Gold Vase, and the Scottish Seniors Amateur Open in 1988.

He lived in Seaton Burn for most of his life. He leaves a widow, Janet, a daughter Sandra, a grand-daughter and a great grandson.



# BIGGA MEMBER LAUNCHES TURF CADDY APP



A new App has been developed that could revolutionise the chemical spraying of agricultural and leisure land. Turf Caddy, devised by Ben Blampied-Smyth, Course Manager at Royal Jersey Golf Club, will help users meet legal obligations whilst also helping to alleviate environmental concerns.

Turf Caddy is designed to allow quick and easy calibration of Fungicides, Pesticides, Herbicides and Liquid Fertilisers used in all areas of Turf Management whether on Golf Courses, Sports Grounds or Land Management.

It calibrates the amount of chemical required for various types of spraying equipment over a given area as well as plotting the areas sprayed via GPS and allowing a spraying record to be created for reference.

Turf Caddy allows users to electronically track their spraying

as they work; it also helps to extend the shelf life of expensive product and allow for better budgeting.

Ben qualified with a Turf Science and Golf Course Management degree in 2009 and became Head Greenkeeper at the Royal Jersey Golf Course in 2011.

The birth of this app and also of his blog, which has now had over 17,000 viewings and a large following online, are both tools Ben is using to help streamline his role to be more efficient, compliant and informative.

Ben said: There has always been a lot of misuse of Pesticides, Herbicides and Fungicides. The main issue is measurement with them being put down either too weak or too strong. Apart from the performance and environmental considerations, the products are also very expensive so it's

vital for users to find a way to monitor and use them effectively. Originally I just designed Turf Caddy for Greenkeepers but it soon became apparent that it was also applicable to managers of agricultural land and sports fields and also owners of large gardens. The interest in the App has been quite phenomenal.

"With Turf Caddy it feels like we're moving the industry into a new era."

Requirements: Compatible with iPhone, iPod touch and iPad. Requires iOS 4.0 or later. Cost: £4.99 Android version. Available from Amazon Android and iTunes. Compatible with Android 2.2 and above. Requires GPS.

The App is also calibrated for the US market.

For more information please visit: [turfaddy.co.uk](http://turfaddy.co.uk). Ben's Blog: [royaljersey.getrefined.com](http://royaljersey.getrefined.com)



## STEWART CLAYTON

Last month saw the passing of Stewart Clayton, MD of Greensman and well-known face in the greenkeeping industry. Alan White, who owns Greensman, paid this tribute.

"Stewart passed away in the company of his devoted younger sister, Linda, after battling a brain tumour for a year. He was an accomplished sportsman who became involved with hockey, representing England.

"Golf then became Stewart's greatest passion, he was the driving force behind The Bramham Lions Golf Society for almost thirty years and was a member of Scarcroft GC for almost as long.

"Joining Greensman in 2002 Stewart quickly developed his East Anglian territory and was offered a Directorship. Representing Greensman and Scotlube, he was happiest when playing in regional golf days. Stewart played off twelve and could remember every stroke he had ever dropped. He never forgot to help his fellow man, to be supportive, warm and genuine, and always be there when you needed him. He will be sadly missed.

"All good things come to an end - apart from memories."

## HEAD GREENKEEPER JON RAISES THE BARR

Congratulations to Jon Barr, Head Greenkeeper at Lutterworth Golf Club, who has become our latest Master Greenkeeper.

Jon began his studies for the certificate seven years ago and passed the exams earlier this year, becoming the 63rd BIGGA

member to achieve Master Greenkeeper status.

He said: "I'm really pleased. I'm most pleased that I won't have to sit the exams again! They were the first exams I've sat in about 20 years so it was daunting, but I put a lot of work in.

"I did it for my own career and development.

"Having the Master Greenkeeper certificate puts you in a great position if you want to further your career."

Turn to page 38 for much more on Master Greenkeeper.



Steve (centre) with Karen Proctor, Ransomes Jacobsen Key Accounts Manager, and Neil Back

# SLALEY HALL'S STEVE CRAM WINS AWARD

Congratulations to BIGGA Member Steve Cram, Golf Course & Estate Manager at De Vere Slaley Hall, who was awarded 'Greenkeeper of the Year' at the annual Pro Shop Europe Awards. Steve has received a wealth of praise throughout the year for his sterling work in preparing the Hunting course at De Vere Slaley Hall to such a fantastic standard for the 40th anniversary of the PGA Cup.

Steve has been a long-standing member of the team at De Vere Slaley Hall and has been integral in developing the North East resort's reputation as one of the UK's premier golfing destinations and tournament venues.

As well as maintaining a championship standard of golf course through challenging weather conditions all year round, he's overseen six

European Tour and 13 European Senior Tour events at the Northumberland resort. The team implemented a strenuous programme of course and drainage improvements over the winter months, and this paid dividend throughout the peak season, culminating in the 26th hosting of PGA Cup matches.

Steve said: "I was really pleased and humbled to win – to be honest I was surprised to even be nominated. The award is more for all the team here who have worked so hard over the last few years.

"I feel the greenkeeping team is now a tighter ship and more efficient than it's ever been, and the whole golf operation here deserves credit.

"We came into March and April this year facing a real challenge – we had snow on

the ground for two weeks in April. But since then we've flown – it was a great summer. We did have two or three spells of really heavy rain, but we'd done lots of work on our drainage in preparation for those conditions. So, the next day we would be fully open with no compromise for our members and visitors."

Keith Pickard, Regional Golf Director at De Vere, said: "Steve is a credit to his profession, a true leader who loves his trade and has a fantastic ability to galvanise and motivate his team of green staff. His passion and pride inspires his team to put in the extra hours to ensure everything is perfectly prepared, and he stands as a role model for heads of departments across the whole De Vere Group. The award is richly deserved."



## A KNIGHT'S TALE

Hydroturf International welcomes Gareth Knight as their newest addition to the Dubai Head Office – a familiar face to many at BIGGA. Gareth's new role of Commercial Sales Manager sees him managing the UAE, Oman & Bahrain for products such as Toro, TruTurf, Bernhards, and others.

Gareth previously worked as Estates Manager at Trefloyne G.C. He was also Section Secretary of BIGGA South Wales and BIGGA Regional Vice Chairman.

# PHYTOPHTHORA RAMORUM IS THE REAL ENEMY WITHIN

**A succession of alien insect pests and diseases have entered the UK over the last decade almost entirely via other EU nations, and by taking advantage of inter-EU 'free trade' accompanied by no quarantine measures worthy of that name. Heaven knows why the government publicly took on Chalara ash dieback disease caused by the fungus *Chalara fraxinea*.**

This is a spore spread pathogen causing internal vascular wilt disease in one of the UK's most frequently occurring and ubiquitous trees (common ash – *Fraxinus excelsior*). Once in the UK it was beyond eradication, here to stay and with the fate of common ash in its hands.

*Chalara fraxinea* is highly host specific and has so far only been found infecting members of the *Fraxinus* genus. A number of *Fraxinus* species of European, Asian and North American origin are planted in the UK as ornamental ash trees but *Fraxinus excelsior* is the only native *Fraxinus* species.

Only other trees (shrubs) at possible risk from this pathogen are privet, common lilac and patio olives, because like *Fraxinus* species they are members of the plant family Oleaceae (olive family).

As bad as it is for common ash there are other alien diseases in this country here for much longer, with a much broader host range and the capacity to wipe out a whole range of trees and shrubs important to the amenity, landscape and forestry sectors.

Greenkeepers may remember *Phytophthora ramorum* which was dubbed 'Sudden Oak Death' because a strain of the fungus-like pathogen was ripping through native North American oaks and tan oaks in California and neighbouring West Coast States. First identification of *Phytophthora ramorum* on a mature tree in the UK was in November 2003 on a 100-year old North American red oak (*Quercus falcata*) in Sussex.

Ironically the two genetic lineages (strains) of *Phytophthora ramorum* now causing havoc in the UK did not arrive from North America. They are European strains which slipped in through the EU 'back door', probably on *Viburnum* imported from the Netherlands or Germany.

Everyone thought *Phytophthora ramorum* would decimate English oaks but they have proved to be much more resilient than their North American counterparts, probably due to the extraordinary thick bark. However, *Phytophthora ramorum* was soon found on a number of UK broad-leaf trees including common beech, southern beech, sycamore, holm oak



and sweet chestnut though mercifully only relatively small numbers have been involved. Last count showed *Phytophthora ramorum* infecting 130 species across 75 genera in no less than 37 plant families. This host range includes many popular shrubs and ground cover plants including *Rhododendron*, *Viburnum*, *Pieris*, *Syringa*, *Camellia* and *Vaccinium* (e.g. bilberry).

The real damage subsequently caused by *Phytophthora ramorum* is on-going in commercial forestry. The pathogen has found wild *Rhododendron ponticum* foliage to be the ideal template for infection, disease development and spore production. From there the pathogen has proceeded to scythe through Japanese larch (*Larix*

*kaempferi*) and has essentially destroyed this conifer as one of UK forestry's premium softwood timber trees.

Many greenkeepers are probably unaware of these developments but those who manage golf courses in western England (Devon, Cornwall, Forest of Dean and Lancashire) in Wales, western Scotland and Northern Ireland where this moisture-loving pathogen and disease is rife will be only too well aware. Many thousands of hectares of Japanese larch have already been felled either because the trees were infected or as a precaution against further spread of established infections nearby.

**Dr Terry Mabbett**

# TURF MANAGERS' CONFERENCE 2014 – BE THERE!

Book your spot at [www.bigga.org.uk](http://www.bigga.org.uk), [www.btme.org.uk](http://www.btme.org.uk) or contact the L&D team at BIGGA House



**The Turf Managers' Conference 2014 is at The Crown Hotel in Harrogate on Monday 20 January 2014 featuring cutting edge presentations, seminars and debates full of critically important information for you as a delegate to take with you in your career.**

You will spend a day in a room full of your peers from across the UK, Europe and the world allowing you a day of unrivalled networking and the opportunity to chat with greenkeepers from all manner of courses.

For BIGGA members it costs just £105 plus VAT for a truly unrivalled day of insight which is essential to equip you with

the tools you need to succeed in your future career.

For 2014, the Conference will be kicked off by Dr Karl Danneberger, Professor of Turfgrass Science at Ohio State University. As you will have seen in last month's Greenkeeper International in his article focusing on pigments and photoprotectants in turfgrass, Karl is an expert in turfgrass ecology and physiology and has received numerous awards for his work.

He will be discussing the research he's undertaken across the world and will be informing you how turfgrass plants respond to low light conditions.

Next up is Tammy Ball, Change Leader

at 'Coaching by the Balls'. American-born Tammy has been a change leadership specialist for 15 years, and she will be introducing the concept of Change Management as well as offering practical advice and proven methods for effectively communicating change in the workplace.

Third speaker is Karl Morris, Managing Director at The Mind Factor. Karl is one of Europe's leading performance coaches and will be introducing his practical approach to performance coaching that understands the role of the mind and how to get the very best out of yourself and others.

Junier Brown, Senior Advisor in Environment and Business at the



Environment Agency follows with a look at the water resource challenges we all face, how to manage these finite resources and will ask whether the country is facing a water resources 'Rubicon'.

Final speaker is the popular Mark Hunt, Technical Director at Headland Amenity. Mark's weekly weather blog which looks at our changeable climate from an agronomic perspective is a firm favourite in the greenkeeping industry.

His presentation will focus on GDD data how it can be used to make management decisions.

As if that wasn't enough, take a look at what just two previous delegates have to say about the event..

"After being a delegate at the last three Turf Managers' Conferences, I have no hesitation in recommending the event to all within the industry.

"The speakers are highly experienced in a wide variation of fields from turf experts, man management to club politics, all of which are playing a bigger and bigger role in our day to day job.

"I believe that the attendance of American speakers in recent years just highlights the popularity and expertise that this Conference carries. It is a must for me every year at Harrogate and I always wait in anticipation for the guest speakers to be announced- I have yet to be disappointed."

**Dan McGrath, Course Manager, North Foreland Golf Club.**

"The key thing for me is that it does not just focus on agronomy. I've been to the last three and I've seen excellent seminars on presentation skills, interview techniques and management advice. It's a really good mix of subjects.

"The important point is there seems to be a misconception that it's just for Course Managers, Head Greenkeepers and Deputies. But any greenkeeper keen to advance their career will gain so much from attending the Turf Managers Conference."

**John McLoughlin, Deputy Head Greenkeeper, Grange Park Golf Club.**

# L&D News

The latest from the Learning and Development department at BIGGA

## BIGGA ANNOUNCE NEW PARTNERSHIP WITH BARONESS



BIGGA are pleased to announce a new partnership with Baroness which will enhance the Association's commitment to the continuing education of greenkeepers.

The first of the Association's new client deals will see Baroness, who have been producing specialist grass-cutting machinery for almost 50 years, back a scholarship scheme which will help BIGGA members gain their technical and supervisory qualifications.

Under the terms of the agreement, Baroness will support BIGGA members who cannot access funding for their NVQ Level 3 Sportsturf qualification. If the member meets the required criteria they will receive 50% of their course fees up to a maximum of £1,000.

BIGGA's Learning & Development Manager Sami Strutt said: "We're excited about this partnership which further supports our ever increasing focus on education.

"NVQ Level 3 is a critical level for greenkeepers looking to progress to a supervisory role, and we're proud to be able to offer support to these greenkeepers who are clearly fully committed to achieving the best in their careers.

"We're very pleased that Baroness are supporting this initiative and look forward to helping many greenkeepers access this demanding yet hugely rewarding and beneficial qualification."

Baroness is the brand name for the Kyoeshia Corporation of Japan, who currently offer a wide range of mowers from



hand-pushed to self-propelled walk and rider machines.

Baroness is the market leader in Japan and are continuing to expand worldwide, particularly in the USA and Europe.

They have been a firm supporter of BTME in recent years and have increased their stand space for the 2014 exhibition.

Managing Director Ian Kerry (above) said: "Baroness is very pleased to be working as partners with BIGGA.

"We hope that, especially through our support of the Level 3 Scholarship programme, we can help those in the greenkeeping profession who want to attain a level of competency through personal development that will help them throughout their careers.

"We are looking forward to a long and fruitful partnership as we continue to push forward with Baroness in the UK."

You can check out Baroness's latest machines and meet the team on Stand B78 at BTME.



### ASHLEY PRESSES ON WITH SCHOLARSHIP



Congratulations to Ashley Allpress who is the latest recipient of a BIGGA Higher Education Scholarship supported by Jacobsen, worth £1,000.

Ashley is Deputy Course Manager at West Surrey Golf Club, and will attend Merrist Wood College to study NVQ Level 4 in Sports Turf Management.



**Gold Key Individual Members:**  
Steven Tierney MG, Chris Lomas MG, Andrew Campbell MG CGCS, Ian MacMillan MG, Ian Morrison, Andrew Turnbull, W J Rogers, Sam Langrick, Espen Bergmann, Nick Gray

**Silver Key Individual Members:**  
Steve Dixon, Richard McGlynn, Douglas Duguid, Jaey Goodchild, Graham Wiley, Michael Beaton, Paul Jenkins, David Barker

The funding provided by Gold and Silver Key Sponsors is used to produce training and career aids, DVDs, CD Roms, field guides and provide refunds for training fees and subsidised learning and development courses. The funding also helps support seminars, workshops, courses, the lending library, careers advice, posters and manuals.

#### Contact Details

- Sami Strutt  
L&D Manager  
sami@bigga.co.uk
- Rachael Duffy  
L&D Executive  
rachael@bigga.co.uk
- Stuart Green  
L&D Executive  
stuart@bigga.co.uk

01347 833800 (option 3)  
www.bigga.org.uk

# APPLY FOR FTMI 2014



The FTMI 2014 made possible by Jacobsen will take place between 25-27 March 2014, and you could be one of the 20 delegates selected for this fantastic opportunity with applications now open.

This event is aimed at up and coming greenkeepers who want to make the leap to Course Manager. Focusing on personal and professional development, the FTMI programme utilises the expertise of leading Course Managers, dynamic trainers and industry experts to mentor and educate the next generation of industry leaders.

Presenters include:

Frank Rossi Ph.D - Director of Turfgrass Agronomy at Cornell University

David Bancroft-Turner - Specialist in leadership development and organisational politics

Lorna Sheldon - Dynamic personal communication and presentation skills trainer

The ideal candidate will show initiative, dedication to greenkeeping, a genuine interest in the industry and be actively involved in education at both a regional and a national level. Representatives from BIGGA and Jacobsen will select the successful delegates.

Gina Putnam, International Marketing Manager for Ransomes Jacobsen, said: "The inaugural event last year was superb and surpassed our expectations. It provided an excellent learning experience for those greenkeepers fortunate enough to be selected. If you're thinking of applying and feel you are ready for an intense two and a half day learning spree, then don't hesitate to apply; you won't regret it!"

To apply fill in the application form online which you can find on the BIGGA website. The closing date is 13.1.2014.

As if that wasn't enough to convince you to join this initiative, take a look at this feedback from some of last year's delegates...

"What an awesome course, the mentors were excellent, understanding and extremely supportive. The hospitality laid on by Jacobsen was also superb." Leigh Powell, Deputy Course Manager, Hockley Golf Club.

"I wish this had been around when I was coming through the ranks. A real chance to gain the knowledge required to be a Course Manager." Matt Plested, Course Manager, Muswell Hill Golf Club.

"The FTMI was my first involvement in a BIGGA

event. I was unsure what to expect but as soon as I arrived everyone was welcoming. The presentations and the people who presented were amazing, I would recommend the FTMI to anyone." Wesley Lenihan, Deputy Head Greenkeeper, East Brighton Golf Club.

"It was a superb programme with excellent speakers, I learnt so much that will be relevant to my career. Jacobsen and BIGGA should be proud." Daniel Scott, Greenkeeper, Woburn Golf & Country Club.





# Membership News

The latest news from BIGGA

**Following the Greenkeeper International survey, we've revamped the Membership pages – and we want you to get involved.**

As before, this section will highlight the many benefits BIGGA membership gives you, but will feature you, the members.

We want to hear your stories and experiences – so whether you've

found a new job through BIGGA, got help through our Legal Helpline or Lifestyle Counselling, worked at a high-profile tournament or even won a golf competition we want to hear from you!



### Contact Details

**Tracey Maddison**  
traceymaddison@bigga.co.uk

**Elaine Jones**  
elaine@bigga.co.uk

**Tel: 01347 833800**  
(option 1 for Membership)



You can follow BIGGA on Twitter @BIGGALtd

## Pre Register Now for BTME 2014

### Register now

CLICK HERE FOR FREE ENTRY

Pre registering for BTME is essential - visit [www.btme.org.uk](http://www.btme.org.uk) and click REGISTER NOW.

This helps you avoid the queues and ensures you make the most out of your visit to BTME which this year features over a hundred major exhibitors, the hugely popular Turf Managers Conference on Monday 20 January, our unrivalled Continue to Learn education programme and our new Welcome Celebration on Tuesday 21 January featuring guest speaker Peter Alliss (below).

BTME 2014 is now just weeks away so now is the perfect time to plan your visit.



## WE'RE PUTTING YOU IN THE PICTURE AT BTME!

New to BTME is our BIGGA Photo Booth! Located on the BIGGA Stand B23, we'll be looking to update member photos which in many cases have become outdated. An example of this is Rob Welford, Course Manager at Cleethorpes Golf Club. Here's Rob's current membership photograph (left) and here's what he actually looks like now (right).

Tracey Maddison and Elaine Jones from Membership will be poised with the camera for all three days of the exhibition, so now's your chance to say farewell to the 12-year-old picture or unwanted passport pic! We're hoping it will help increase footfall on the BIGGA Stand, create a real buzz and also give you the opportunity to smile and have some fun with the BIGGA House team. It will also ensure we have some professional head and shoulders shots of our members who have attended BTME and can be reused in Greenkeeper International, the BOGGA website and in any other publicity.

### BIGGA Regional Offices

#### Scotland & Northern Ireland

**John Young**  
Mobile: 07776 242120  
johnyoung@bigga.co.uk

#### Northern & Midland

**Sandra Raper**  
Mobile: 07866 366966  
sandra@bigga.co.uk

#### South East

**Clive Osgood**  
Tel: 01737 819343  
Mobile: 07841 948410  
cliveosgood@yahoo.co.uk

#### South West & Wales

**Tracey Harvey**  
Mobile: 07841 948110  
tracey.harvey@bigga.co.uk



John Young Sandra Raper



Clive Osgood Tracey Harvey

## BIGGA AGM AT BTME

The Annual General Meeting of BIGGA will be held during the BIGGA Turf Management Exhibition (BTME) at Harrogate on Wednesday 22 January 2014 at 5.15pm in the Queen's Suite at the Harrogate International Centre.

All paperwork, including the agenda and proxy voting forms will be available on the BIGGA website from Friday December 20.

### OTHER USEFUL NUMBERS

(Full Members only)

**Personal Accident Helpline**  
0207 2048952

**Greenkeepers Legal Assistance**  
0800 177 7891

**Lifestyle Counselling Helpline**  
0844 770 1036  
[www.arlegal.co.uk/carefirst](http://www.arlegal.co.uk/carefirst)



# Future Turf Managers Initiative

25 - 27 March 2014

made possible by

Applications now open  
at [www.bigga.org.uk](http://www.bigga.org.uk)

**JACOBSEN**

- For up and coming greenkeepers who want to make the leap to Course Manager
- Gain knowledge and insight from leading Course Managers, dynamic trainers and industry experts
- Two and a half intensive days of seminars, presentations and workshops
- Topics include communication, budgeting, team management, CV writing and interview tips and more



- ✓ 4x4
- ✓ 1000lt tank
- ✓ auto rate control
- ✓ ground follow boom
- ✓ 6m boom with 8m extensions



**GAMBETTI**  
*Pro - Dedicated 1000*



simplifying  
**SPRAYING**

**the only dedicated sprayer that ticks all the boxes!**

see this machine at BTME in Harrogate 21st to 23rd Jan 2014 <> or book your demo now

[www.gambettiuk.co.uk](http://www.gambettiuk.co.uk) <> 01361 883418

# BTME

# PREVIEW

Some of the products on show  
at BTME 2014



## ETESIA BACK AT BTME

Etesia returns to BTME in January to give greenkeepers and turf managers a chance to see an exciting range of new products.

The Etesia team will be out in force on stand A53, showcasing its range of environmentally friendly professional products including an electric ride-on mower, the ETMower robot mower and a range of Duocut pedestrian mowers along with Pellenc's lithium-ion battery powered chainsaws, polesaws, hedge trimmers, blowers, brushcutters and pruning shears.

New for 2014 is the Pellenc Excelion 2000 cow-handle brushcutter. The Excelion 2000 prevents almost 98% of the direct emissions of a petrol engine. As with all other Pellenc products, the Excelion 2000 uses the ultra-high capacity technology of the Pellenc lithium battery and guarantees non-polluting, odourless operation with quick start-up and up to 4.5hrs of continuous operation.

Pellenc is the only professional tool manufacturer to offer a whole range of tools that operate with ultra-high capacity multipurpose batteries.

Also new for 2014 is a range of Duocut pedestrian mowers. The PKCTM 46cm and LKCGM 53cm models are available with mulching inserts ensuring that users can use one machine for a multitude of different tasks – cut and collect, cut and drop or mulch.

The PKCTM model is a single speed machine equipped with a 6HP Kawasaki KAI-FS181 engine and comes complete with a long range fuel tank making it ideal for mobile grass cutting teams who require a machine to last all day without re-fuelling, whilst the LKCGM model is equipped with a 6HP Kawasaki KAI-FS180 engine and has three speeds – 2.7, 3.5 and 4.5km/h.

Supplied with a 50 litre grass box, the PKCTM has seven cutting height settings, which are quickly adjustable from 28-85mm and Xenoy reinforced cutting deck. The LKCGM model has an 80 litre grass box with cutting height adjustment 25-85mm and an aluminium cutting deck.



## JOHNSONS BRING BRAZIL TO HARROGATE

DLF Johnsons Sports Seed will bring a Brazilian feel to BTME 2014. Based on the successful playing surfaces of the last World Cup in South Africa 2010, seed from the DLF Group has again been chosen for all World Cup stadiums and training pitches for Brazil 2014. To celebrate, the company has instigated a Europe-wide competition to win tickets to see the tournament in action.

The new 4turf™ cultivar in the chosen mixture has been trialled in the UK at the STRI and the final seed mixture thoroughly tested in Brazil by both international advisors & local sports grass specialists. Football pitches in Brazil are generally Bermuda grass based, but due to the winter dormancy of Bermuda grass the pitches need to be reinforced with temperate sports turfgrass to provide the perfect playing surface. To meet this requirement, the pitches have been overseeded with DLF's top performing Perennial ryegrasses including 4turf™, a new and innovative turfgrass from the R&D stable of DLF-TRIFOLIUM.

4turf™ will be widely available in the spring of 2014. It will be included in several new mixtures for the professional market unveiled at the show by Johnsons Sports Seed. Details of the World Cup competition, linked to 4turf™, and how to enter will be colourfully available on stand A20.

4turf™ is a new turf type of tetraploid Perennial ryegrass that has a double set of chromosomes. 4turf™ cultivars have larger seeds and have been bred for improved stress tolerance.

Find out more at BTME 2014.



**RT**  
rigby taylor



Problems, Problems,  
Problems?



**STAND C62**

**Answers, Answers,  
Answers!**

## NEW CAMPEYS IMANTS AT BTME

Being small doesn't necessarily mean less effective. What the new Imants Mini Rotoknife from Campeys lacks in stature it makes up for in speed and performance.

What you get is a multi-purpose linear, disc-aerator that will relieve surface compaction, improve aeration, reduce thatch build-up and remove surface water, in a single pass.

This amazing little machine packs a real punch as it moves quickly across the surface.

Whether towed or mounted, it applies itself to combatting areas of general wear and tear, or areas that need help recovering from excessive use.

A disc rotor with three settings gives flexibility in working depth and linear spacing, allowing deep-slitting to a depth of 100mm, or shallow slitting at 50mm spacing. It is ideal on warm or cool season grasses.

The Imants Mini-Rotoknife is a versatile, effective aerating machine that may be small but can still 'cut it' with the big boys!

Come see for yourself on Stand B58.

Also, a presentation by David Harrison, Campeys' Export Sales Manager will be held on Tuesday 21 January at 1.45pm entitled 'A Revolution in Renovation'.

30 years ago, stadium and grounds managers largely followed the path set by golf greenkeepers in renovating their pitches, often copying their methods and buying up their old, used machinery!

With increased demand from a global TV audience to produce quality pitches at the top grounds and stadiums, often in a hostile environment for grass, today's groundsman are looking to innovative methods and machinery to carry out their maintenance and renovation.

This seminar will look at the renovation done on some of the world's best pitches and how some of these practices are now being adopted by golf greenkeepers.

Anyone with a professional interest in maintaining and renovating sports turf pitches will benefit from attending this event in the Queen's Suite.

# Huxley Golf All-Weather Practice Tees

# Huxley<sup>®</sup> Golf

Premier All-Weather Surfaces for Golf



The Castle Course, St. Andrews

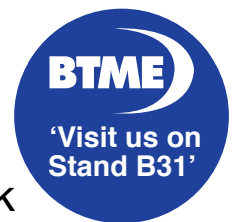
UK and Overseas Enquiries:  
Tel +44 (0)1962 733222  
Email: [sales@huxleygolf.co.uk](mailto:sales@huxleygolf.co.uk)  
[www.huxleygolf.com](http://www.huxleygolf.com)



Pioneering the development and production of high quality sand-based products for over 150 years



Contact **Sharon Morris** on  
**07932342044** or email  
[Sharon.morris@mansfield-sand.co.uk](mailto:Sharon.morris@mansfield-sand.co.uk)  
[www.mansfield-sand.co.uk](http://www.mansfield-sand.co.uk)



# Tomslocker.com

The independent search directory for all turf professionals

Proud sponsors of the internet cafe at **Harrogate BTME 2014**. Visit Toms Locker at stand **C53**.

## DENNIS AND SISIS AT BTME 2014



Dennis and SISIS will be on stand A5 at BTME with a continuation of the successful product launches from IOG SALTEX earlier this year. The joint stand will feature a range of products that have been engineered to provide turf professionals with machines that really perform.

On the stand will be the new SISIS Rotorake 600HD pedestrian scarifier and redesigned SISIS TM1000 tractor mounted scarifier which now features five quick release interchangeable reels to aid the removal and control of thatch and help reduce standing surface

water by improving water infiltration.

Completing the SISIS line-up will be the Autoslit pedestrian deep slitter, which is ideal for use on fine or outfield turf.

From Dennis, there will be the Razor Ultra 560 mower which has been developed specifically for golf greens and tees, cricket pitches and bowling greens.

The machine has a 560mm (22") cutting width and incorporates many key features including an 11 bladed cutting cylinder, ultra short wheelbase for undulating surfaces, tungsten tipped groomer, compact handle design

for extra manoeuvrability, click height adjusters and stub free transport wheels for easy transport from site to site.

Finally, the most popular Dennis machine - the FT interchangeable cassette mower will also be on display.

The range gives operators maximum versatility with options to fit 11 different heads including scarifiers, verticutters, brushes, spikers and slitters as well as 5 or 10 blade cutter cassettes with 30 seconds changeover of cassettes. Models are available as 17" (43cm), 20" (51cm) and 24" (61cm) widths.

## INNOVATION FROM THE GRASS GROUP

The Grass Group always aims to bring new products and ideas to the market.

For BTME 2014 it will be the way to buy quality tines; a new advanced 26" pedestrian mower and a lower maintenance rotary mower.

[www.tines-shop.co.uk](http://www.tines-shop.co.uk) is an online shop offering a comprehensive range of competitively priced replacement Tines and Bedknives manufactured to the highest quality.

The Grass Group has established an exclusive partnership for the UK and Europe with US manufacturer Ceres Turf Inc.

Manufactured from 41/40 superior steel in a one piece solid construction method that exceed the norm.

CTI's solid rod construction enables longer life with optimum wear and are considered to be 'best-in-class' to provide significant operational performance with



value for money.

Visitors to the website will see a selection of the most popular Tines and Bedknives suitable for a range of OEMs.

To complement the established ATT INFiNiSystems' 22" pedestrian mower The Grass Group will be showing its new bigger brother the 26" version.

The product will be kept under wraps until it is introduced at BTME 2014 - come and see us on Stand A35.

**RT**  
rigby taylor



What's new?  
What's innovative?



**STAND C62**

**See for yourself!**

# TILLERS TURF CELEBRATES 25TH BIRTHDAY AT BTME



Tillers Turf is celebrating 25 years in business in January by sharing its success with visitors to BTME. The company will be giving away a bottle of champagne every 25 minutes during the show via a prize draw on their stand-A51.

In addition there will be a competition to win a pair of tickets to The Open at Royal Liverpool Golf Club, to include full corporate hospitality.

Managing Director Tim Fell said: "Golf has been a major part of our business since we began growing turf back in 1989, and BTME has played a crucial role in promoting our products. One of the most striking changes over that period is the

degree of professionalism in greenkeeping. BIGGA have played a major part in this development, and we're delighted to be able to celebrate with them."

Golf courses in England, Scotland and Wales are the most important market for Tillers Turf. With a wide range of different mixtures of grasses the company can provide turf for all areas of the golf course.

One recent innovation involves growing turf for bunker retvetting using a bespoke soil including a high percentage of silt, which sets like a brick in the bunker wall.

Adam Pounds, Sales and Marketing Manager, puts the company's success down to consistent quality and service.

He said: "We always try to go the extra mile for our customers, who are at the heart of our business".

Export of the Company's turf to Europe is continuing to grow with sales to Norway, Holland, Belgium, Luxembourg, Switzerland, France and Ireland.

The latest product to come onto the market is Tillers Wildflower turf which includes up to 30 native species of wildflowers and grasses.

Although primarily for green roofs and landscaping Tillers Wildflower turf is increasingly being used for creating biodiversity and interest on featured areas of golf courses.

## GAMBETTI LAUNCH NEW SPRAYER AT BTME

Gambetti Sprayers are launching their latest dedicated sprayer at BTME.

This new unit meets all the demands of the modern golf course and delivers the latest technology that professional superintendents and greenkeepers are looking for.

We needed a machine that can deliver large volume, cover large areas and have a low ground pressure footprint, so it can be used in all areas. The Pro Dedicated certainly achieves this and more.

The machine has four independent wishbone suspension units which deliver

the best terrain handling ability giving the operator and machine a comfortable drive. Four wheel drive is also a standard feature.

The sprayer tank has an 1100l capacity and features a dry tank gauge, so the operator can see the tank content with ease. There is a high quality agitation system which ensures a uniformed distribution of product throughout the tank.

The Pro Dedicated 1000 is available with 2 boom options. Standard is the electric folding GF aluminium ground following boom.

This boom follows the exact

contours of the terrain put in front of it.

A chemical induction hopper is also a standard feature. Using a chemical induction hopper is the only way of ensuring the chemical is put into the tank and mixed properly so there are no concentrated pockets within the sprayer tank.

A high pressure container washer is also standard within the chemical induction hopper. This feature means that if you triple rinse your used containers, they are no longer categorized as hazardous waste.

Electric controls and

automatic rate control are also a standard feature. Our rate controller is the AMC Bravo 180s. This rate controller is by far the simplest to use and is one of the most accurate on the market.

Gambetti are also offering a full range of GPS guidance systems and now, the latest SELETRON rate controller with GPS guidance built into it.

This system turns off every individual nozzle when it passes over an area that is already sprayed, and turns it back on again when over an untreated surface. Come and see us on Stand A61!



## THE STIG RETURNS TO BTME WITH COMPLETE WEED CONTROL

BTME marks the return of 'The Stig Driving Challenge' on the Complete Weed Control stand, where visitors can also see the range of weed and ice control services that the company offer.

Visitors to Stand C48 will be invited to set a 'hot lap' on the Top Gear track with everyone's times going up on the Leaderboard. The CWC Stig will set the 'to beat time' each morning with prizes being offered for the fastest time set from each day.

Following the successful launch of the Weed-IT machine at IOG SALTEX earlier this year, which sees the machine being available to purchase in the UK for the first time, CWC will be looking to appoint suitable dealers in order to create a network that can provide regional back-up and support for both the Weed-IT machine and the chosen carrier vehicle.

Following the show, on-site demonstrations will be available as well as bespoke builds for task specific machinery.

"We feel that it is now time for the weed spraying industry in the UK to step up to the plate and face its collective responsibilities to protect the

environment in which we operate," says Ian Graham, CWC's Managing Director.

"Making the technology available to everyone removes the excuse for the blanket spraying of huge areas of hard surfaces.

"With the changes in the label for glyphosate, access to this state-of-the-art machinery has never been required more."

Also on show will be the company's baseguard product. Baseguard allows water and nutrients through its porous structure to the roots below, negating the issues associated with compaction.

Tree wells are often choked with leaves, cigarette ends and other debris, especially when fitted with iron grilles. baseguard, however, fills these voids and can be installed in conjunction with grilles when the tree is planted, or as a retrofit.

In recent months the baseguard system has been used for much larger applications than simply tree surrounds, with access roads to sports pitches at Premier League training grounds as well as footpaths and play areas at schools being just some of its uses.

**RT**  
rigby taylor



Why will competitors flock to our stand?



**STAND C62**  
**Has the answer!**

# BLEC TO LAUNCH NEW MACHINES AT HARROGATE



BLEC GLOBAL will use BTME to launch new products for the golf and sportsturf industry on stand A39.

These include a revolutionary new tractor-mounted golf green disc overseeder with 25.4mm (one inch) spacing between the discs - the closest spacing of any disc seeder produced by BLEC.

And BLEC has also built a new two-wheel tractor with a power transmission

unit that will operate many machines, including their own Power Box Rakes.

The tractor will be available with a Honda or Yamaha engine, diesel or petrol options - and with drive to the front and rear drums.

Also at BTME will be the BLEC Laser Grader - a popular machine with golf course contractors for levelling and rebuilding tees.

Another universally successful machine

on show will be the Multivator - which decompacts and recycles rootzone material in one pass.

BLEC managing director Gary Mumby said: "BTME is a very important show for us where we get the chance to start the year by showing our innovations for golf and sportsturf professionals.

"It is a great place to catch up with customers and old friends and we look forward to seeing them on the stand."

## MANSFIELD SAND DEBUT AT BTME 2014

Mansfield Sand Company Ltd will showcase their range of Sports Sands and Landscaping products at stand B31 in Hall B at BTME alongside Lincolnshire-based turf supplier, County Turf Ltd.

Privately owned Mansfield Sand supplies rootzone materials, top dressing and bunker sand to over 400 golf courses across the UK, including the home of the English Senior Open, Rockcliffe Hall, and Lee Westwood-endorsed Close House.

The company also supplies pitch materials to a very high percentage of the professional

football and rugby clubs throughout the UK as well as councils, schools, universities and private sports facilities.

Mansfield Sand has supplied sand based products from its base in North Nottinghamshire for over 150 years and was recently granted planning permission to develop a new quarry in the local area, securing the future of the company. All landscaping products developed by the Mansfield Sand are based on blends of various grades of silica sand and PAS100 accredited green compost.

Mansfield Sand and County Turf have enjoyed a successful

business relationship for many years and recently worked together to renovate the Leeds Carnegie pitch at Headingley Stadium and the Ullevi Stadium pitch in Gothenburg, Sweden.

"This is Mansfield Sand's first time at BTME and we are very proud to be exhibiting our range of top class products alongside County Turf", explained Sharon Morris, Mansfield Sand's Golf Sales Manager. "Two years ago we granted County Turf exclusivity to produce custom grown Fibresand and Fibrelastic Turf and it has proved to be an extremely successful partnership.

"The exchange of technical expertise coupled with the dedication to deliver the very best sports and landscaping surfaces has been of great benefit to both companies and the customers we supply".

Andy Fraser, Managing Director of County Turf agreed: "Both Mansfield Sand and County Turf pride ourselves on the quality of our products and our ability to satisfy the many requirements of landscaping contractors, sportsfield specifiers and users alike.

"Our collaboration on projects such as the Headingley Stadium is testament to this."



**BORDER  
SPORTS  
SERVICES**

*Specialist Sportsturf Suppliers*

BTME 21st-23rd Jan 2014

Stand

**C4**



**Specialist suppliers of**

- Top Dressing Sands and Rootzones
- Dried Infill Sand for Synthetic Turf
- Controlled & Slow Release Fertilizers
- Cricket Loam
- Grass Seed
- Drainage Grits & Gravels

**Tel - 01228 561982**

**Web - [www.bordersportsservices.co.uk](http://www.bordersportsservices.co.uk)**

**Email - [info@bordersportsservices.co.uk](mailto:info@bordersportsservices.co.uk)**



# SoilHarmony

For high performance sports turf

**PRODUCTS TO ENSURE YOUR TURF IS:**

- healthy & vibrant
- wear, temperature & stress tolerant
- uniform & defined colour
- less reliant on pesticides
- profitable for you

[www.soilharmony.co.uk](http://www.soilharmony.co.uk)

m: 07795 467938

t: 01673 885175

Ilex EnviroSciences Ltd



**BTME 2014 - Stand A59**

 **TurfKeeper.com**

Measure Better, Manage Better

## Your online Sports Turf Management System

**TurfKeeper.com:** The original turf management system, is a dynamic online management tool for the Turfkeeping Industry, offering a wide range of planning, resources and business tools.

- ✓ Powerful Planner Tools
- ✓ Stock Control
- ✓ Staff Management
- ✓ In-Depth Reporting
- ✓ Budget Planner
- ✓ Machinery Management
- ✓ Applications Planner
- ✓ Accessible Anywhere
- ✓ Safe & Secure Data
- and much more...*



**ONLY  
£399**  
+VAT pa

Visit our  
Stand, C12 in  
Hall C, BTME 2014

**REQUEST A FREE ONLINE DEMO TODAY**

**[www.turfkeeper.com](http://www.turfkeeper.com) | [info@turfkeeper.com](mailto:info@turfkeeper.com) | 0161 8131797**



## CLEARWATER IS THE STAR

ClearWater, the UK's No. 1 WTL approved Washpad Water Recycling System designed specifically for use on turf maintenance machinery, will be the star on the Highspeed Group stand C15 at BTME.

Over 200 of these much acclaimed systems have been supplied to golf courses and others in the turf management sector and recently the company secured its first order from the USA, supplying a system to East Lake golf course in Atlanta. Further success has come recently in France too with an order in the Provence. The system, manufactured to EN858 standard, has also been featured at the German Greenkeeper Association (GVD) conference and exhibition in Hannover.

ClearWater, developed by Highspeed Group Ltd and manufactured in the UK, being an officially approved water saving technology, qualifies for 100% 1st year capital allowances under the ECA (Enhanced Capital Allowance) scheme. This means that companies investing in the system, can write off 100% of the cost of installing ClearWater system against taxable profits; a good incentive to choose ClearWater.

ClearWater's main aims are simple; Prevent pollution and save water! It is the most unobtrusive system on the market and in a class of its own. Safely below ground and featuring simple yet effective engineering, the system has proved to be a winner.



## NEW JOHN DEERE MODELS AT BTME

New machines from John Deere's comprehensive golf and turf maintenance product range will be featured at BTME 2014 on Stand M30.

These include the new X950R commercial rear discharge/rear collect diesel lawn tractor – a first for the company – and the latest heavy-duty 4x4 Gator utility vehicle, the fast and powerful XUV 825i petrol engine model.

The basic 24hp X950R will be available in four different configurations, with a choice of 122 or 137cm (48 or 54in) rotary mower decks and either a 550-litre (low dump) or 670-litre (high dump) materials collection system.

Additional user-friendly features include a unique single multi-function hydraulic lever for operating the mower deck, collector and front mounted implements, and a separate hydraulic pump for lifting and emptying the collector quickly at low engine rpm.

More power, speed and acceleration are provided by the new 50hp XUV

825i Gator utility vehicle, which has a top speed of 44mph and offers smoother, automotive-style performance. Power steering with an anti-kickback feature is standard.

The 825i features a fully locking four-wheel drive system and fully independent double wishbone suspension, with up to 267mm (10.5in) of ground clearance.

The large, one-piece cargo box provides a load capacity of 454kg, while towing capacity is 680kg and overall payload capacity is 635kg.

Also making its UK show debut at Harrogate is the new XUV 855D S4 Gator utility vehicle which combines versatile off-road performance, work capability and comfort for up to four people.

It is powered by the proven 25hp three-cylinder liquid-cooled diesel engine featured on the current 855D model; the olive & black liveried S4 also has a top speed of 32mph, and comes with power steering as standard.

The turf industry's biggest choice of hybrid electric walk-behind and ride-on cylinder mowers is represented by the 2500E greens mower and 8000E lightweight fairway mower, equipped with innovative Quick Adjust cutting units featuring the SpeedLink system for extremely quick height-of-cut adjustment. John Deere's hybrid electric mower technology was the first to be made commercially available on the amenity market, in 2005.

These machines will line up alongside other pedestrian and ride-on cylinder and rotary mowers, Gator utility vehicles, compact tractors and quality parts. In addition, John Deere Financial's latest interest-free finance programmes mean golf and bowls clubs can still order a new machine until the end of February 2014, with the first of two annual payments at zero per cent interest due in March 2014, based on 60 per cent of the recommended retail price.

For Earth, For Life  


# Versatility at work

SEE US AT  
 BTME 2014  
 STAND NO  
 A16



F3680 WITH NEW 100" CUTTING DECK

GL40 SERIES TRACTORS

ZD ZERO TURN MOWER

M60 SERIES TRACTORS



For demanding daily use, Kubota offers a powerful and versatile choice.

The Kubota range of groundcare machinery delivers outstanding performance, simple operation and legendary reliability. From powerful and versatile tractors to high performance mowers, find out why Kubota is the practical choice for professionals.

Contact your local dealer to book a test drive today.

**2 YEAR WARRANTY**  
 AS STANDARD\*

\*Conditions apply to 2nd year - see dealer for details.

For further information or to find your local dealer:

[www.kubota.co.uk](http://www.kubota.co.uk)  
 Tel: 01844 268 000



NOW YOU CAN

# Vitax Enhance

ANY TYPE OF TURF!

Enhance, the unique range of turf fertilisers with Amino-Sorb®, has been extended for use on all types of sports and managed amenity turf.

The range now includes:



Micro-granular bio-active fertiliser available in three formulations (Spring/Summer, Autumn/Winter/Zero phosphate)



Rapid response bio-active liquid foliar fertiliser available in three formulations (Spring/Summer, Autumn/Winter/Zero phosphate)



Granular bio-active fertiliser suitable for fairways and other longer mown turf available in two formulations (Spring/Summer, Autumn/Winter)



Unique water soluble powder fertilisers with Amino-Sorb® - provide foliar and root feeding for all types of turf. Available in four formulations (Spring/Summer, Autumn/Winter, Turf Renovator and NK).



For full details of these and the full Vitax Amenity range of turf products visit our new website at [www.vitaxamenity.co.uk](http://www.vitaxamenity.co.uk) or call us on 01530 510060

# Twin Peaks

A man wearing a blue beanie and a black jacket is smiling and looking towards the camera. He has his right hand on his hip. In the background, there is a green golf course with a red flag on a green, a large stone building with a grey roof, and a forested hillside under a clear sky.

Steve Castle travelled to Wales to hear the remarkable story of the Kerry twins and to see the greenkeeping past, present and future of Royal St David's Golf Club





**Even on a wet and windswept autumnal morning, the setting for Royal St David's Golf Club in Harlech, north west Wales, was breathtaking. It's a remarkable location – an SSSI within Snowdonia National Park. Harlech Castle loomed high above while Snowdonia itself glowered imposingly from the north.**

Roger Kerry has been Head Greenkeeper at the links for over 30 years, and his twin brother John has been Deputy for almost as long. My visit meant I would be able to examine the club's past, present and future because they had already hired Roger's replacement to join the team – Rhys Butler, former Deputy Head Greenkeeper at Aberdovey, a similar links 40 miles along the Welsh coast.

As I negotiated the small level crossing which runs yards from the club's maintenance facility, I was immediately warmly welcomed by the twins, who revealed they will retire on different days! John was born at 9pm on a November evening back in 1948, but Roger delayed his arrival until 3am, also meaning they have different star signs. As well as kinship they have an obvious passion and respect for the industry, plus pride in their decades of work on the course. They are both unassuming, positive characters, and insisted that greenkeeping – and Harlech – is in a far healthier place now than when they began.

Big brother Roger said: "You didn't want to come into greenkeeping in the 1970s. The pay was very poor, there was no education. If you could drive a tractor you were in, that was it."

He joined in 1978, and confessed he faced a real challenge. With little money, an ageing greenkeeping team and soaking wet greens dominated by meadowgrass, the club had temporary greens from 1 November all the way through until a fortnight before Easter. John joined as Deputy in 1980.

Roger continued: "The greens were so boggy even in summer. You would hit a shot onto the 17th green and it would plug in the turf! You had 95% meadowgrass greens with two inches of thatch. The club wouldn't invest. It had a very good name in the forties, but it was living in the past and it wasn't anywhere near the standard anyone wanted – the club, golfers or the greenkeepers. There was no structure, no long-term plan."

One of their first moves was to invite Jim Arthur to the course. With no formal education available, they avidly read his books and articles and knew they had to invite him to Wales – but the club needed convincing his visit was necessary.

Roger said: "The club were concerned that the knowledge Jim would pass on to the team would lead to them demanding higher wages. That was the mentality then. Eventually he came and it was a real eye opener, exactly as

we'd read in his articles. He gave us all sorts of advice and pointers."

John added: "Of course, at that time we didn't have vertidrainers or slitters, so it was a case of hand forking the greens. We gradually got them firmer, so you could play the running game.

"We gradually made progress, ensuring drier and drier surfaces. In drought conditions in the late eighties we decided to let the course 'burn out' for its long-term benefit. Maybe we went over the top occasionally but we were still learning. Sometimes you have to stoop to conquer."

Gradually, golfers started to return with low handicappers enjoying this truly natural links test of golf all year round. In turn, this attracted tournaments. During my visit, the PGA Welsh National Championship was in town, and they've also regularly hosted the Ladies European Tour and the R&A-backed Jacques Leglise Trophy between GB & Ireland's boys' team and their European counterparts (this year won by GB & Ireland.) Naturally, this increased focus and acclaim did present its own challenges.

Roger explained: "We realised a few years ago that the practice ground was too short. Better players with more modern equipment were clearing the ground and landing balls on the 17th fairway. So we moved the 17th fairway further left, making it a tougher hole and extending the practice ground. For

Name: Roger Kerry  
Born: Harlech, 23  
November 1948  
Handicap: 10  
Hobbies: Singing,  
rugby, golf  
Favourite Sports Team:  
Harlech Rugby Club

Name: John Kerry  
Born: Harlech, 22  
November 1948  
Handicap: 10  
Hobbies: Singing,  
rugby, golf  
Favourite Sports Team:  
Harlech Rugby Club

Name: Rhys Butler  
Born: Machynlleth, 31  
May 1978  
Handicap: 1  
Hobbies: Cycling, trail  
running, golf  
Favourite sports team:  
Arsenal

**ABOVE: The Team at Harlech:**  
Rhys Butler, Llion Kerry, Gareth  
Evans, Emyr Price, John Kerry,  
Roger Kerry. Missing: Owain  
Aeron.

## MACHINERY LIST

John Deere semi rough  
mower  
John Deere fairway  
mower  
Toro 3250 mowers x4  
Hardi 300 sprayer  
Toro workman x3  
Kubota 2410 tractor  
Kubota 3250 tractor  
Kubota st 30 tractor  
Toro flymo x2  
Flymo striker x2  
Toro pro core 648  
Dakota 410 spin  
dresser  
Amazon flail



The Kerrys are certain of a busy retirement – mostly involving singing and rugby. They even recently recorded a CD – a rousing mixture of English and Welsh choral classics such as ‘Galway Bay’ and ‘Ol’ Man River’. My personal favourite is a stirring cover of ‘Anthem’ from the musical ‘Chess’ which made for the perfect soundtrack as I travelled home. They also perform for residents of nursing homes, and are looking forward to watching more Harlech Rugby Club matches for whom Llion is one of the key players.

the same reason we’ve also moved some of the tees back.”

The Kerrys – and the whole team – are proud to say the greens are now predominantly bent with (roughly) 35% fescue and 5% meadowgrass. Their aeration programme varies – they used to do once a year but aerated three times last year along-side 8mm solid tining, with slitting in October. They oversee around three times a year with two types of fescue.

Roger said: “I feel we’ve taken it to a good level, and after working with Rhys for a few weeks I think he can take it on to another level.”

They’re going to miss it, aren’t they?

They both smiled before John replied: “We are but it’s time to go. The club told us we could carry on if we wanted but it’s decided. After we got them on board with what we were trying to achieve they’ve been very supportive through the years, and that will continue to be the case with Rhys.”

It’s pleasing to note the Kerry name is not disappearing – John’s son Llion is First Assistant Greenkeeper, ensuring a nice historical continuation. He confirmed that the Kerrys have had a harmonious partnership, with any disagreements confined to sarcastic sibling bickering! Also, Assistant Greenkeeper Emyr Price has been at the club even longer than John and Roger as he’s now entering his fortieth year at Harlech.

Ymddeoliad hapus Roger a John.



## A ROYAL APPOINTMENT

The man entrusted with filling the Kerrys’ shoes is Rhys Butler. As well as completing his NVQ Level 2 and Level 3 at Northop College, he gained an HNC in Golf Course Management at Elmwood.

This was an online distance learning course which he described as “fantastic - it covered everything I needed to know”. He is on BIGGA’s North Wales Committee (of which Roger Kerry was a founding member) and was awarded an R&A Scholarship during his studies at Elmwood. Aberdovey also twice won an STRI Golf Environment Award under his stewardship.

Rhys joined the team around two months before the Kerrys retired to familiarise himself with the links, and is already beginning to implement his ideas while remaining true to some of their long-term practices. So, why Harlech?

“Agronomically, to inherit a place like this which the Kerrys have put so much work into is probably every greenkeeper’s dream. Considering the hardships they’ve gone through over the years the course is phenomenal. I can’t think of many courses that have managed to change from meadowgrass to the finer grass they have now.

“I played in a Junior Open here when I was about 13 and played in many national championships over the years, so I’ve been aware of this special links for a long time. They hold plenty of tournaments here, and

having worked on BIGGA’s Open Support Team a couple of times I’ve realised that’s what I enjoy the most – preparing the course for a championship and seeing what the elite golfers make of it. The feedback from the golfers is so valuable – and this shapes your thinking ahead of the next tournament.

“It’s now up to me to keep to the same sort of tried and tested methods John and Roger have developed while taking it up a little notch again. It’s not about starting from scratch, it’s building gradually from the excellent work Roger and his team have undertaken. You never stop learning in greenkeeping and that will be true here for me. It really has been a great honour to work alongside two real gentlemen of the greenkeeping industry.”

His first idea was to construct a walkway from the second green to the third tee. It was previously very narrow so it’s been improved – something that’s gone down well with the members.

He added that Castle Stuart is his vision of the ideal modern links – something which is backed by Roger and John. He intends to tweak the bunkers so they have a very rugged, natural appearance – and a big project looming is to remove trees from the sand dunes to reinforce an open, ‘linksy’ feel.

*For more, visit the new greenkeeping blog set up by Rhys <http://royalstdavidsgolfinksteam.blogspot.co.uk>*



# We need you

Join the BIGGA Open Support Team at The Open 2014, at Royal Liverpool

**Applications are now open for a place on BIGGA's Open Support Team for the 143rd Open Championship at Royal Liverpool Golf Club next July.**

We require full BIGGA members to join our team behind the scenes. They will be supporting the home greenkeeping team at Hoylake by raking bunkers alongside the players during the four rounds.

You may also be required to complete early morning preparation work and evening divot repairing.

It's a real development opportu-

nity from both a professional and personal point of view. You will gain an understanding of the technical preparations from the home greenkeeping team and sample the atmosphere of one of the world's greatest golf tournaments.

You will also spend several days with greenkeepers from across the UK and the world with many remaining firm friends for years to come.

You will receive accommodation, a food allowance, daily transport to and from the course, a waterproof

suit and polo shirts – all you have to do is make your way to Liverpool. The 2014 tournament proper begins on Thursday 17 July with the winner crowned on Sunday 20 July.

To apply, just fill in the application form on the opposite page and return by post to Rachael Duffy at BIGGA House, Aldwark, Alne, York YO61 1UF by Friday 31 January 2014. We'll announce the team in February and the successful applicants will then be allocated various roles within the team. Good luck!

Name .....

Golf Club .....

Position .....

BIGGA Membership Number .....

Home address .....

Email Address .....

Mobile Number .....

Passport photo attached?.....

Waterproof measurements; waist.....leg length.....

Polo shirt measurement; chest.....

Are you available for the Early Morning Prep team from Monday 14th July? .....

Sunday final night (20th July) accommodation required? ..

Any specific dietary needs?.....

If so please state .....

I have applied for/appeared on the team at:

Applied Successful

Muirfield, 2013..... ..........

Royal Lytham & St Annes, 2012..... ..........

Royal St George's, 2011..... ..........

St Andrews, 2010..... ..........

Turnberry, 2009..... ..........

Yes No

I have been a BIGGA member for more than three years.... .....

I serve, or have served in the last three years, on a Section/Region Committee..... .....

I am an active member of the BIGGA CPD Scheme..... .....

I have attended three of the last five BTMEs..... .....

I am/have been a member of the PGA Championship Support Team..... .....

I am willing to be a mini bus driver (You must have held a full driving license for three years and be over 25 years of age.)..... .....

I am an overseas Member..... .....

IMPORTANT INFO

Note: A place on the team is open to all full BIGGA members but priority will be given to the more active members. Subject to the availability of sufficient numbers of experienced team members no regular team member will be selected for more than three teams in succession. A limited number of places will be made available to younger members and overseas members.

**Please ensure that you have spoken to your golf club or Course Manager prior to applying and have arranged the time off.**

To apply please fill in the application form and enclose a passport photograph and send to Rachael Duffy, BIGGA House, Aldwark, Alne, York YO61 1UF. **Closing date is 31st January 2014.** You will be notified in February if you have been successful.





# Go West

West Sussex Golf Club's Joe Dormer triumphed in our Photo Competition with this frosty April shot



**BIGGA**  
**2nd**  
Photo Comp

**BIGGA**  
**3rd**  
Photo Comp

**The winner of the BIGGA Golf Photographic Competition 2013 is Joe Dormer, Assistant Greenkeeper at West Sussex Golf Club, with this fantastic picture looking over a pond at the club's 14th hole.**

Joe has always been keen on photography and borrowed a friend's camera to take the winning shot on his day off, early on a frosty morning in April.

Joe said: "I'm so chuffed to win the overall competition, I really am

over the moon. I used a Lumix G2 DSLR which I borrowed from friend and Sheriff rep Adam Hartley.

"I noticed the potential for a great early morning shot previously, that corner of the course is in a beautiful area, abundant in wildlife in a natural heathland setting. Usually when I'm mowing greens this area is the last place you get to at around 9:30-10am so I dragged myself out of bed on my day off to get this picture at 7am. West Sussex is such a picturesque course and is man-

aged in a way by Course Manager Ian Streeter that compliments its beauty."

Runner-up was Gareth Roberts, Course Manager at Hankley Common, with his colourful shot of the 11th tee at his club. Greg Fitzmaurice, Head Greenkeeper at Hunley Hall Golf Club, was third with a striking cliffside image taken on his course.

Thanks to all BIGGA members who entered the competition – the next best nine entries are included in your calendar in this month's magazine. The top 12 were chosen by professional photographers Eric Hepworth and Alan Birch plus a judging panel at BIGGA House.

Joe wins a framed print of his shot, and a framed print from Eric's wide range of golf course photography which you can see for yourself at [www.hepworthgolfphotography.com](http://www.hepworthgolfphotography.com). Gareth and Greg win a print from Eric's collection.



**WILL THE MOWER WITH THE  
MOST POWER  
IN ITS CLASS...**



FOR A LEGENDARY PERFORMANCE  
ON YOUR COURSE, CALL 01473 270000

[www.ransomesjacobsen.com](http://www.ransomesjacobsen.com)



# ... PLEASE RAISE YOUR ARM

**NEW** AR722T™

Nothing is more powerful than the all-new seven-gang AR722T™ contour rotary mower from Jacobsen. With a massive 48.6 kW (65.2 horsepower) Kubota® turbo-charged diesel engine, the AR722T powers its ultra-productive 3.15 metre (124-inch) width-of-cut without slowing down.

The AR722T glides over ground contours and climbs hills with ease – thanks to the exclusive SureTrac™ four-wheel drive traction and weight transfer control. See for yourself why the powerful and productive Jacobsen AR722T contour mower is at the head of its class – call your local Jacobsen dealer today.

**JACOBSEN**®

# Master Greenkeeper unmasked

## MASTER GREENKEEPER CERTIFICATE

What is the BIGGA Master Greenkeeper Award, how do you achieve it and why should I apply for it? All these questions and more answered

**The Master Greenkeeper process was started by BIGGA in 1990, and a total of 63 greenkeepers have been successful so far. It's rightly considered to be one of the highest accolades in the history.**

Master Greenkeeper is achieved via a three stage process - education, training and experience, assessment of golf course operation and a case study and technical examination.

The certificate is open to all full BIGGA members, regardless of age and whether working at a large club or a smaller club.

But don't just take our word for it. We asked some of BIGGA's Master Greenkeepers to give you more of an insight into what the process involves, how it can reward you personally and professionally, and explode some of the myths surrounding it.

### CASE STUDY ONE

**Alan Pierce MG (main photo)  
Course Manager, Ham Manor  
Golf Club**

Alan began studying for his Master Greenkeeper certificate in 2010 to push himself and benefit his club and their members. It took him just a year to complete the process.

He said: "During the process, the greenkeepers who were already MGs were extremely helpful and supportive. The main challenges for me were finding out what the course inspection required and also fully understanding the exam questions.

"I had enough CPD credits to

progress to the course inspection stage relatively quickly. My team and I put a great deal of preparation into ensuring that our normal high standards were not just met but exceeded throughout. I studied hard for the exams and was fortunate to pass the inspection and exams on my first attempt.

"The award has many benefits. My employer is very happy with what I've achieved and it has encouraged me by pushing me to maintain the high standards expected of a Master Greenkeeper on a daily basis. It shows real commitment to your profession.

"I know there are rumours the MGs are a bit of an elite club but nothing could be further from the truth. Every single MG I've met has been very friendly and approachable. They're all from different backgrounds and different clubs - some have very limited budgets and resources while others have excellent budgets and resources. Some have three members in their team and some 30 - but all share the determination to achieve."

### CASE STUDY TWO

**Colin Parish MG (shown inset)  
Course Manager, Morecambe  
Golf Club**

Colin passed his Stage One and Stage Two in Master Greenkeeping while at Ulverston Golf Club in 1999, then moved to Morecambe Golf Club where he passed his final exams in 2005.

He commented: "I wanted to be able to manage at a high standard and have an understanding of what's needed in every aspect of greenkeeping. I had a HND and lots

of experience which helped me pass Stage One. I then gained a few years' experience as a manager before taking Stage Two. I did not pass the exams at my first attempt so left it a year before having another go. The exams were a real challenge and in the end it took me several attempts to pass them.

"Achieving MG has improved my confidence and self-esteem at work and in my personal life. I've earned real respect from my employer and they benefit from having a golf course that operates at a consistent standard at all times even when operating to certain budgets. I meet so many greenkeepers who are incredibly passionate about their job and undertaking your MG goes in tandem with this.

"My advice to anyone considering going for Master Greenkeeper would be to go for it and don't give up. Don't fear failure. It took me five years to complete it. There's supposedly a stigma around MG status but it's not like that, all the MGs I met are all down to earth and hard working. I don't manage a high end course, it's a normal members club, you can achieve it."



**CASE STUDY THREE**  
**Les Howkins MG (inset)**  
**Course Manager, The Richmond Golf Club**

Les Howkins completed his MG in 2004 while at Cleethorpes Golf Club. He is now Course Manager at The Richmond Golf Club.

He said: "I got fed up with people moaning about the MGs and how it was only in place for greenkeepers at big clubs, so I decided to give it a go and if they were right, at least I would have the evidence to prove it.

"My team and I worked incredibly hard to pass the course inspection and that was with a team of four and an annual budget of around £25,000.

"The process pushed my standards up and will continue to do so. It strengthens best practice and sets a benchmark for what can be achieved.

"It opens doors to other jobs as it

really stands out on a CV. I would like to see it as the norm and the goal of every greenkeeper moving up the ladder. It's not for the elite or the privileged few – it should be for the masses. Greenkeeper education has improved in so many areas and there is no reason more can't make the grade – if I can do it anyone can."

For even more on Master Greenkeeper, visit the Education section of the BIGGA website and click on the 'Master Greenkeeper' tab. If you're a member you can download the Golf Course Inspection form and past examination papers from the MG Section in the members' area. You can also contact the BIGGA L&D team at BIGGA House for more info.



# Bringing back the bees



Dr Terry Mabbett looks at how Operation Pollinator is making an impact at golf clubs nationwide and asks, what's really in it for the greenkeeper?

**Operation Pollinator sounds like a mission and in many respects that's just what it is. Its underlying aim is to wage war on the disappearance of bees from the landscape and offer them the best possible incentives to return.**

This is being achieved by sowing the broadest range of pollen and nectar rich flowers to suit the tastes of the widest spectrum of these Hymenopterous (bees and wasps) insects. The essential difference is that instead of concentrating on traditional targets like meadows, natural downland and grass verges, Operation Pollinator focuses on golf courses by seeding out of play areas with a rich mix of annual and perennial flowering plants.

Operation Pollinator is the brainchild of Syngenta but has become a golf industry initiative in implementation. "It is a valuable opportunity for the golf industry to play a pivotal role in saving the bee population," said Caroline Carroll, Marketing Communications Manager at Syngenta.

"Golf courses can be real oasis for wildlife. Most have land resources and skilled managers that can create the habitat to encourage populations of bees and pollinating insects, without impinging on their members' play."

Golf courses are perhaps a better resource than other more traditional wild flower sites like grass verges. Indeed a recent report by the charity Plantlife drew attention to the ongoing deterioration of grass verges as habitats for wild flowers and pollinating insects caused by councils cutting too frequently.

The Operation Pollinator concept has its roots in a much earlier agricultural initiative, to establish wildflower and pollinating insect sanctuaries in field margins. The programme itself is based on knowledge and experience gained from the scientifically acclaimed 'Buzz Project', with over four years of field trials conducted by independent researchers.

So what are its objectives? Caroline explained: "The aim of Operation Pollinator is to establish







Managers can create the habitat to encourage bees and other pollinating insects without impinging on members play. Undisturbed rough around the course at Bowood Golf and Country Club in Wiltshire (Picture Syngenta)



a total of 250 hectares of pollen and nectar rich habitat across 500 golf courses in the UK and Ireland, to provide essential food sources and nesting sites for pollinating insects and especially bumblebees and wild bees in general.

“For members there is an enhanced visual and playing experience, and for managers a fast response to their endeavours. Experience shows an Operation Pollinator programme can deliver beneficial results and effects 60% quicker than conventional management techniques”.

### What's being done?

Operation Pollinator sites are established on free draining soils receiving sufficient light to encourage and promote both flowering and insect activity. South facing sites are ideal, whilst cold, north-facing sites with inherently prolonged wetness should be avoided. Site selection is based on these environmental and ecological considerations.

Out of play and undisturbed rough, alongside water resources, on fairway carries, alongside walkways between holes, around the backs of greens and woodland margins are all prime sites. Sites at the woodland edge, along hedge lines and across sunny banks will furnish additional nesting habitats for bumble bees and other pollinating insects.

Seed mix selection is very much a 'horses for courses' choice with

Operation Pollinator recommending, rather than dictating, appropriate species combinations. Three seed mixtures - Parkland, Heathland and Links - are recommended with the exact species formulation created by specialist ecologists and entomologists, in conjunction with golf course designers and agronomists.

Syngenta is not prescriptive in its approach to seed mix selection and choice. “We simply recommend these mixtures as a template, but courses do not have to use them”, said Caroline. “Greenkeepers know their courses best and from experience what species of wild flowering plants are already established and thriving.”

Different species of plant obviously have different requirements, revolving around factors like soil pH and nutrient status, while different species of bees clearly have differing flower and food requirements dictated by flower morphology (shape and structure).

But courses should aim for plant species and an overall selection with established successful flower formation and display extending over the longest possible period of flowering.

According to Syngenta the speed and end result of habitat creation will largely depend on whether a course uses a perennial or annual plant seed selection. Perennial plants will not yield much in the way of flowers during the first year,

while picking up in the second year and coming into their prime in year three onwards. Courses wanting a quick fix and to get members engaged in the project could initially opt for annuals, to provide a fast stunning display and quick source of pollen and nectar in the year of planting. The question is, what will come up the following year depending how successful self-seeding has been?

This is an instance where greenkeepers can take the initiative and develop an appropriate mix of perennials and annuals according to the course, their experience of wild flowers and of course their particular preferences. Some courses are opting for non-wild annual flower mixes giving stunning displays of cosmos daisies and other garden Asteraceae (Compositae) which are 'honeypots' for bees. Wildlife organisations and purists might be a bit 'sniffy' about sowing non-native species, but after all golf courses are not universally natural landscapes and many feature trees species from across the world.

And it's not all about flowers because these mainly dicot (broad-leaved) species will be growing within grass swards. Grass sward composition will have significant impact on seedling establishment and flowering success and therefore the visual and entomological impact of the end result. Caroline recommends encouragement of fescue grasses over rough grasses,



like Yorkshire Fog (*Holcus lanatus*), in roughs. Not only will there be a better seeding success rate but the end result will look much better if the flowers are borne in a wispy open fine rough with fescue panicles blowing in the wind.

**Who's in?**

Caroline says 42 clubs are signed up and when the Marriott hotel group comes on board next year this number will rise to over 50. And you don't have to be in Operation Pollinator to be doing the right thing. "Kings Hill Golf Club in Kent, for example, is doing everything within the objectives of Operation Pollinator without actually being part of it. However, the more that become part of the initiative, the greater weight it carries in promoting golf's true potential for ecological enhancement."

Syngenta has identified the following clubs as carrying out best practice and designated them Operation Pollinator 'Champions': Bowood Golf and Country Club, Cleveland Golf Club, Chesterfield Golf Club, Hanbury Manor Golf and Country Club, Hockley Golf Club, London Golf Club, Massereene Golf Club, Minchinhampton Golf Club, Naas Golf Club, Rutland County Golf Club, St Andrews Links Eden Course and The Grove.

Many greenkeepers are clearly

enthused and already convinced of the worth of the Operation Pollinator Programme. Steve Thompson, greenkeeper at John O' Gaunt Golf Club, said: "As we establish more wildflower areas around the course, the aim is that it will add to the experience of playing in a natural environment."

**What's in it for greenkeepers?**

The success of Operation Pollinator ultimately rests with the level of enthusiasm shown by greenkeepers, and bluntly - what's in it for them.

Good results from an Operation Pollinator programme will clearly raise the profile of the whole course management team giving a sense of pride and motivation. Enhancement of knowledge and skills is clearly a major benefit.

One benefit perhaps not automatically obvious is the incentive to properly manage rough through 'rescue of the fescue'. Operation Pollinator should automatically increase the level of care when applying fertiliser and pesticide with more careful targeting providing better effect and less waste.

It will give greenkeepers a broader and stronger profile for improved career development at the club or elsewhere. Last and perhaps most importantly it provides a way of engaging members and the club

ABOVE: Wispy, open fine fescue rough at Kings Hill, West Malling (Picture Syngenta)

TOP RIGHT: *Bombus pascuorum* on Greater Plantain (*Plantago major*) (Picture Syngenta)

RIGHT: Annual garden flower mixes (including cosmos daisy shown here) give a quick colourful show which is highly attractive to bees and other pollination insects

BELOW: Bird's foot trefoil is prostrate weed of fine turf but in other situations it is an upright and valuable wild flower which attracts bees (Picture Syngenta)

management, and a valuable reason to promote continuous dialogue.

And if greenkeepers doubt members are inside they should consult a survey conducted by Syngenta: 81% of players say that it is important to have a natural looking course; 60% are not satisfied with environmental initiatives on their course; and 74% strongly agree with the statement "I enjoy seeing wildlife - birds, bees and butterflies - when I play."

Caroline concluded: "If a club creates just 0.5 ha of Operation Pollinator it is the same effect as 600 club members sowing a 2 x 4 m flower border at home."





## Ely City gets the buzz of promoting pollinators

The Operation Pollinator wildflower areas established at Ely City Golf Club have generated many very positive comments from members over the summer, reported the club's Deputy Head Greenkeeper and environmental champion, Simon Winters (above).

He believed a key aspect of its success has been the highly visible location of blocks selected for wildflowers - on the walkthrough to the tee for the 15th and surrounding the back of the green - meaning players are fully immersed in the colour and buzz of insect activity in the clearly signposted areas. Secondly, the decision to sow a mix of flowering annuals in the first year has created a blaze of colour and an instant response in pollinator and insect numbers.

"We have also been very proactive with telling the members what we are doing," he said. "Having got them engaged with the initiative and its objectives, and demonstrating quickly what could be achieved, they are very keen for more and to see it extended."

Whilst the wildflower areas have been focused on Sherriff Amenity annual seed mixes so far, Simon is keen to incorporate more native perennial wildflowers into the areas in the future. "The annuals have worked incredibly well and proven a big attraction for insects and players, but they will need to be recultivated and sown each year. That carries a cost and time element that is fine on a small scale, but could prove prohibitive on the larger Operation Pollinator ecological areas scheduled for the coming years.

"Adding and developing areas of native perennial wildflower mix will add ecological diversity and a more natural appearance, and will also be easier to manage in the long-term."

He added that the initiative has generated real interest and enthusiasm among the greenkeeping team. "Our first priority is producing the best possible playing surface. That has really improved over recent seasons and is now looking better than ever, which gives us the chance to give extra attention to the Operation Pollinator areas."

Although the course covers just 94 acres in total, Simon and Course Manager, Andy Baker, identified a number of areas where wildflower could be established without interfering with play, and still providing a visual enhancement to players' rounds.

Andy added: "I believe our experience shows that Operation Pollinator could be incorporated onto every golf course, and would add a beneficial feature for the environment, the greenkeeping team and the players, as well as the golf industry as a whole."



# Researching Endophytes in UK Sports Turf

Jonathan Knowles from Myerscough College unveils his latest research findings on endophytes – potentially a solution for sustainable turf management

## Relationships

All plants have relationships and associations with animals, invertebrates, other plants, and microbes. This relationship or symbiosis can be beneficial, antagonistic or neither. Turf diseases are a good example of an antagonistic association and conversely, mycorrhizal fungi are a classic example of a beneficial relationship. In this article I want to introduce, or at least review a symbiosis which may be new to you; a clandestine microbe - the aboveground fungal-endophyte.

Greenkeeping, or sports turf management, is a skill requiring specialist training, education and an understanding of the balance between ecology, horticulture and agriculture.

I want to discuss how microscopic fungi could potentially open up a new area of knowledge and broaden the understanding and fusion between ecology and sports turf. This area of microbe-interaction is already making progress in crop biotechnology and we are starting to see some early marketing for endophyte-infected seeds for the sports turf market already. The truth is this type of microbe-interaction has been applied and used in turf and grassland management in other countries such as New Zealand for many years.

## Defining an Endophyte

An endophyte is a symbiont, typically a fungal or bacterial infection that lives within the plant. Some endophytes spend part of their

life within the plant, while others spend all their lifecycle within the plant. Mycorrhizae is described as an endophyte, however, this article focuses on the fungal-endophytes that spend their life in the aerial shoots and leaves (plate 1 and 2).

## Grass-Endophyte Ecology & Sports Turf

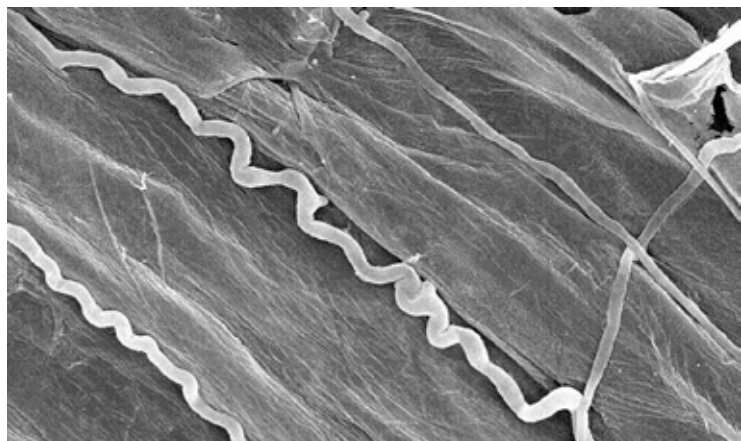
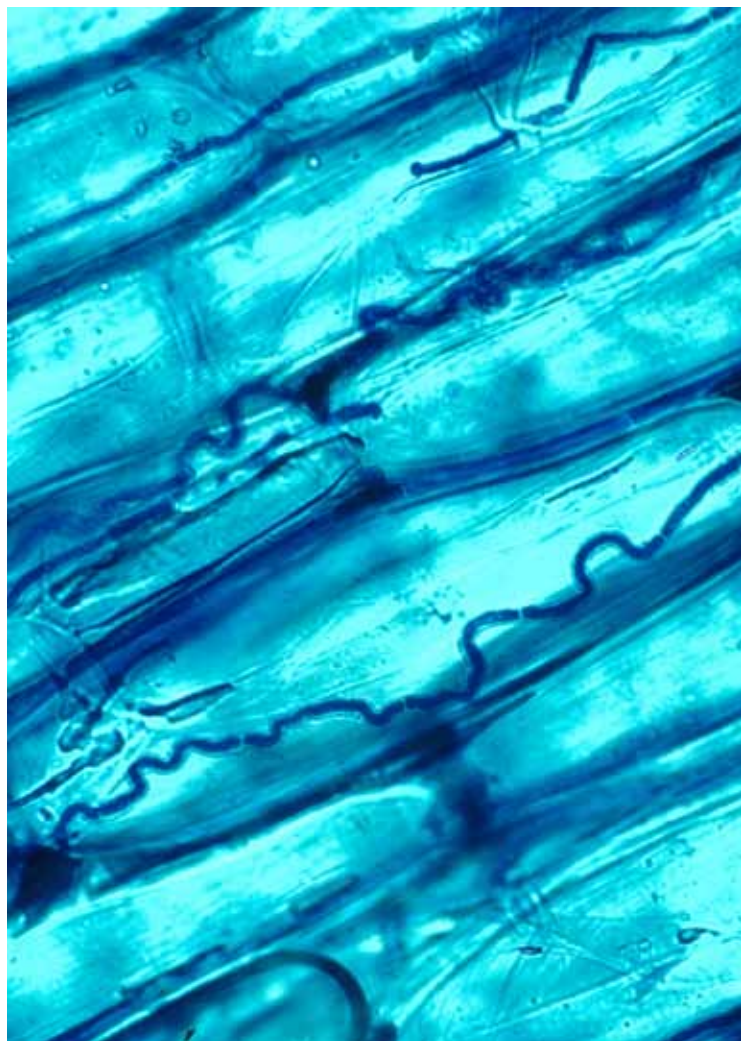
The grass-endophytes symbiosis is not new knowledge. In wild grassland ecology there is a rich source of information discussing the relationship – good and bad.

At the moment sports turf endophyte research is limited, nevertheless, many of the grasses found in ecology and agricultural research are the commonly used in sports turf. So, from what we understand at the moment, there are around six different species of fungal-endophyte infecting UK sports turf species.

That is they have the potential for infection, note we don't have the data to suggest distribution or infection levels in UK sports turf just yet. These six species belong to one family of fungal endophyte - Clavicipitaceae.

A mycologist may be familiar with ergot and choke the pathogenic fungal infections found in grasslands and pasture of rye-grass, cocks foot, tall fescue, red fescues, bent-grasses and purple moor grass.

These antagonistic endophyte infections are caused by *Epichloe* spp. and *Claviceps purpurea*. Neither of these present an obvious threat to sports turf surfaces,



**TOP:** The sheath cells of tall fescue stained blue with endophytic hyphae threading intercellularly X400 magnification. Image sourced - Prof. N. Hill, University of Georgia.

**ABOVE:** Electron Scanning Microscope image of endophytic hyphae (tubular, white and branching) situated here between the cell walls of the sheath tissue of tall fescue. Image sourced - Prof. N. Hill, University of Georgia.

**RIGHT PAGE:** Image from the 2005 investigation of the suppression of red thread (*Laetisaria fuciformis*) and pink patch (*Limnomyces roseipellis*) using endophyte infected red fescues. From the two plots it is clear to see endophyte infected turf on the right suppressing the onset of disease. Image source Dr. S. Bonos, Rutgers University.

## Quiz

1. Select the three correct reasons why endophytes could benefit sports turf?
2. Where is the evidence that endophytes in sports turf may be beneficial?
3. There is no evidence of *Poa annua* being endophyte infected in UK sports turf. However, what species of endophyte could we

especially as they are diseases of the inflorescence. However, seed houses may have concerns over choke, especially as it known to castrate some turf species. Interestingly, for sports turf there is one prominent fungal-endophyte of significance - *Neotyphodium* spp. a derivative of *Epichloe* spp., for which infection is transmitted via the seed of the next generation.

Importantly, this means there are no signs of disease or the associated outward visible growing fungal parts, such as sclerotia or conidia. So this type of endophyte (*Neotyphodium*) typical to our sports turf species is asymptomatic, hence it's secretive infection.

### The Justification of Endophyte Research in Sports Turf

Endophytes have been subject to many grassland, forage and ecology research studies mostly associated with the aspects of grass growth and development.

*Neotyphodium* infection has been reported to have an effect on increased leaf area, tillering, root development, drought tolerance, pest resistance, nutrient deficient soil, and even an increased competitive ability against inter and intra-specific species. This sug-

gests infected grasses are invasive in areas of non-infected broadleaf weeds and grasses. However, some studies show little to no effect of the infection, and there are some contradictions.

These complications could be related to the environmental conditions, grass species, the interacting endophyte species, and even the research methodology used. When these variables are combined with the fact that the symbiotic association between endophyte and host is changeable, difficulties arise.

The association can be beneficial (mutualistic) and in contrast, under other conditions it can be detrimental (parasitic), so it can be difficult to conclude the benefits or otherwise. Indeed the benefits of the association have to be interpreted for the context in which they are set. It's not clear cut, these associations must be tested in a sports turf context to realise if the endophytes matter to the grasses and playing surfaces for sport.

### Endophyte Research Matters

Stateside, Rutgers University are slightly ahead of the game studying endophytes and sports turf (plate 3). Their research has seen a *Neotyphodium* endophyte-mediated resistance to Dollar Spot and Red

## GLOSSARY

**Endophyte** Endo- meaning within and -Phyte meaning plant. Endophytes are typically fungal or bacterial. But not limited to viral or any other microbial interaction within the plant. Endophytes are obligate biotrophs.

**Clavicipitaceae** A family of fungi which consist of more than forty genera. *Claviceps purpurea* is an example, commonly known as Ergot. This grass disease leaves blackened fungal parts extruding (sclerotia) from the inflorescence.

**Alkaloid** A naturally forming chemical compound. Toxic alkaloids are common in fungal-endophytes. These toxins can cause Ergotism when consumed by humans (in cereals). Many beneficial drugs such as anti-cancer, anti-viral, anti-malarial, and even against migraines (ergotamine). All are derived from endophytic alkaloids.

**Ecosystem** A community of living organisms within an environment. Where both biotic and abiotic elements are considered to be linked through nutrient cycles and energy flows.

**Immunoblot** A commonly used analysis method for the recognition of anti-bodies.

**DNA Sequencing** A process for determining the order of the nucleotide molecules specific to the DNA being analysed.

**Neotyphodium** Genera of fungal-endophytes, for which there are fourteen species. Reproduction by asexual or vertical means. Example species: *N. lolii*. Example host grasses: *Festuca*, *Lolium*, *Bromus*, *Melica*, and *Poa*.

**Epichloe** Genera of fungal-endophyte, for which there are ten species. Reproduction by Sexual or horizontal means. Example species: *E. typhina*. Example host grasses: *Agrostis*, *Bromus*, *Dactylis*, *Elymus* and *Poa*.

**Choke** See *Epichloe*.

**Interspecific competition** Competition between different species.

**Intraspecific competition** Competition between the same species.

**Ergot** See *Clavicipitaceae*

**Mycorrhizae** A mutualistic association between root and fungi. Grasses typical form associations with vesicular arbuscular mycorrhizae.

**Sheath tissue** The basal part of the grass. Leaves surround the stem in multiple layers.

**Symbiosis** An association or relationship between individual species. A symbiotic association can be antagonistic, parasitic, mutualistic, or commensalistic (no benefit or detriment to host).

**Sustainability** An approach which safeguards the future by limiting environmental damage, maintaining social equity and enduring economic demands.

**Inflorescence** The flower head of grasses. An aggregation of flowers on the stem.

**Mutualistic** A beneficial association for both host and symbiont.

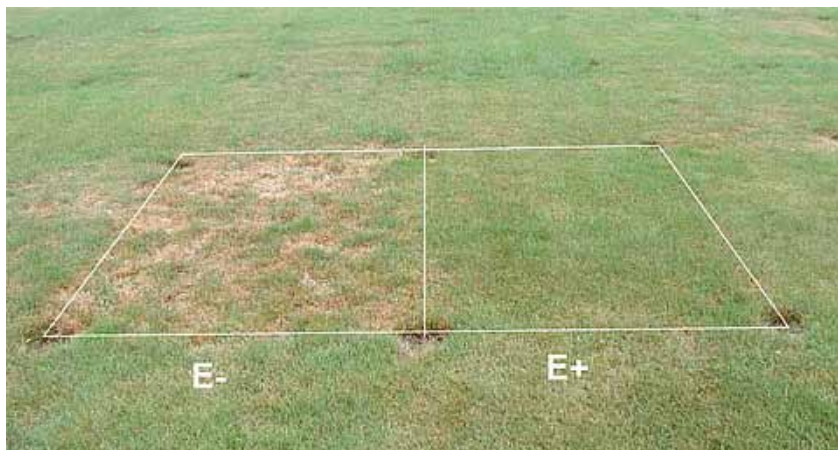
**Parasitic** A beneficial association for symbiont organism or parasite. Causes harm, not necessarily immediate death.

**Biotechnology** Loosely means; applying technology that uses a biological system, living organism, or derivative whether modified or not.

**Propiconazole** Active ingredient of a broad-spectrum fungicide. Example, Syngenta's Banner Maxx to control *Fusarium*, dollar spot, anthracnose, rhizoctonia and bipolaris.

**Argentine stem weevil** A small brown weevil (3 mm in length). A significant turfgrass pest in New Zealand.

**Claviceps purpurea** See *Clavicipitaceae*



expect to detect living within *Poa annua*?

4. What methods are being used to detect infection at the University of Central Lancashire and Myerscough College?

5. The immunoblot membrane image, on page 46, shows endophyte-infected grasses.

What percentage on the membrane is infected?



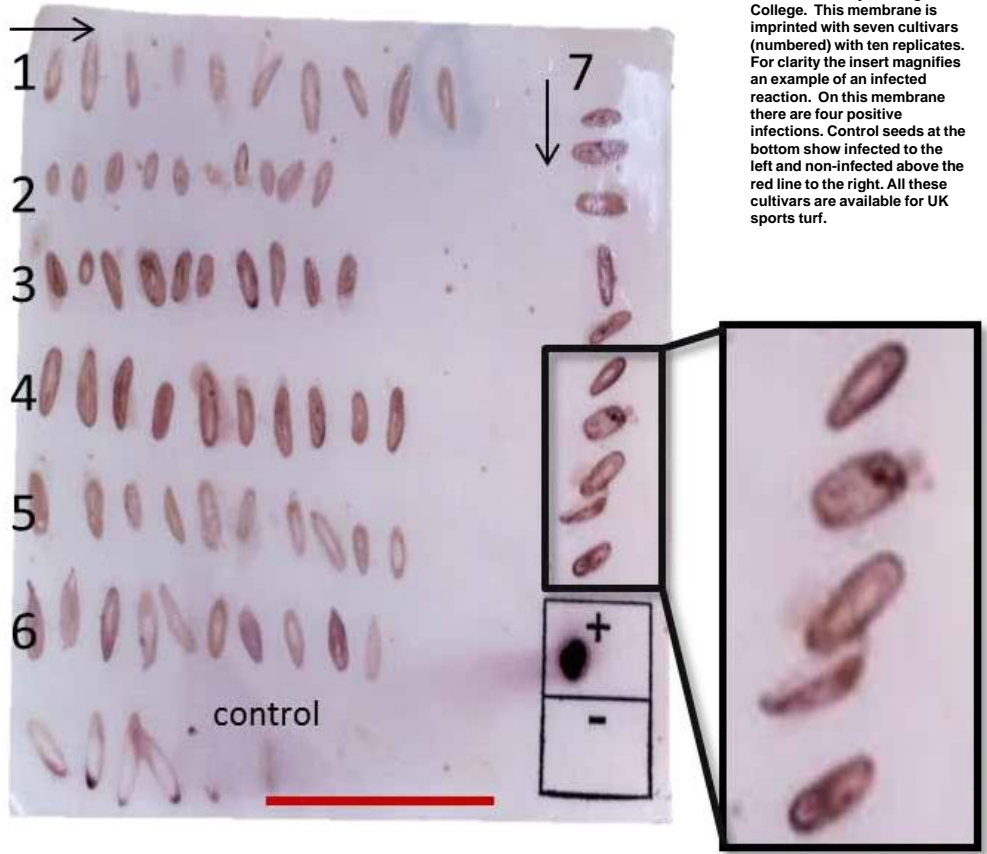
Thread in red fescues. Potentially we could be unearthing a biotechnical answer for the future of sustainable turf disease management. But, there is no evidence to suggest endophytes benefit UK sports turf.

While we interpret the benefits we must also understand the relationship being changeable. For example, it has been discovered that a *Neotyphodium* sp. can prevent wilt during drought, however, following the drought period the infection becomes parasitic diverting the plants resources for its own survival weakening the plant to further stress.

Another example is the hastening of the grass's maturity. There is some evidence to suggest endophyte-infected plants die prematurely.

Possibly not an issue with an over-seeding regime, but we can assume a weakening of the sward that could be susceptible to the threats of disease, pests and weeds.

Also there is evidence that alkaloid producing endophytes have the ability to deter pests such as the Argentine stem weevil in New Zealand, however there is no evidence the effect would be similar in UK sports turf against pests such



BELOW: Immunoblot testing carried out at Myerscough College. This membrane is imprinted with seven cultivars (numbered) with ten replicates. For clarity the insert magnifies an example of an infected reaction. On this membrane there are four positive infections. Control seeds at the bottom show infected to the left and non-infected above the red line to the right. All these cultivars are available for UK sports turf.

# Proven performance across the UK



**Richard Cutler**  
Course Manager  
La Moye Golf Club

*“Medallion TL quickly stopped disease and allowed turf to recover.”*



**Marcus Oakey**  
Head Greenkeeper  
Moor Allerton  
Golf Club

*“Even with snow cover we achieved five weeks disease prevention.”*



**Stan Power**  
Head Greenkeeper  
Hanbury Manor Golf Club

*“The greens treated with Medallion TL came through the harsh winter period with no signs of disease.”*

as chafer grubs or even parasitic nematodes.

After all, many of the cool-season turf grasses have evolved in northern Europe with the endophytes and the associated turf feeding invertebrates.

It is reasonable to hypothesize the pests could be unaffected by the toxins, without the testing we would not know.

Similarly for nematodes, it is only a limited species of endophyte that produces the alkaloids that have the anti-biological toxins to resist invertebrate herbivores.

There are many species of endophytes, it may be a case that certain endophyte infections hold beneficial traits against herbivorous insects while other species are ineffective.

#### about the author



#### Jonathan Knowles

Jonathan started his greenkeeping career 20 years in Nottinghamshire. He is part of the Myerscough College team supporting the delivery of sports turf qualifications. Through a scholarship at the University of Central Lancashire and support of the college he is undertaking a PhD, researching the interaction of fungal endophytes in sports turf. For further information about the research please contact him at [jkknowles@uclan.ac.uk](mailto:jkknowles@uclan.ac.uk)

Even so there needs to be an understanding of endophytes in our surfaces.

The understanding or management of endophytes will need introducing as a new area of knowledge in sports turf.

A good example is the storage of seed; infection in the seed will only survive for around a year stored at 21C, however it is reported to persist for a decade stored at 4C. Moreover, there is an issue with the application of commonly used broad-spectrum fungicides eradicating the infection, particularly by Propiconazole.

Endophyte infected cultivars are starting to appear in sports turf management and quite possibly managers are starting in earnest to incorporate these endophytes into the surface with good intentions.

However, they could be unwittingly removing the endophyte with a fungicide application (unproven, but theoretically possible).

#### Current Research for Sports turf

Myerscough College and the University of Central Lancashire are investigating potential sustainable methods for sports turf manage-

ment, and endophytes are a current area of research. The aim is to examine some of the fundamental questions and whether endophytes matter in sports turf management.

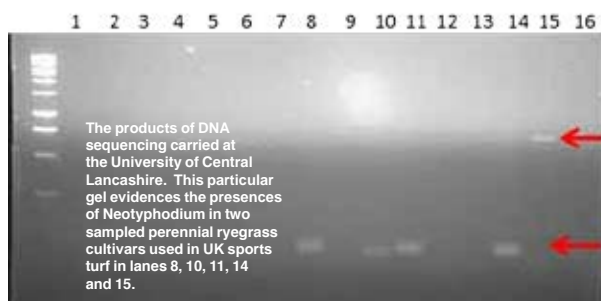
Using DNA analysis and immunoblot technology (plate 4 and 5) we have started detecting the presence of endophytes in UK sports turf, both in seed and surface.

The next stages will be to trial whether the infection has benefits or detriments for sports turf against the stresses of pests, disease and drought; and look at the effects of endophytes interaction with the immediate ecosystems of sports turf.

Endophytes could potentially be a solution towards sustainable turf management through a better understanding; and potentially reduce the application of harmful plant protection products and synthetic fertilisers.

Ultimately endophytes could bio-technically enhance the performance of sports turf surfaces, nevertheless, we need to know more about their ecology and our sports turf management towards them.

**Acknowledgement:** Dr Andy Owen (Myerscough College)



# Bio-inspired explosive performance

The exciting new **fungicide inspired by nature.**  
**Contact\*** action delivers **fast knockdown of Fusarium in leaf and thatch along with outstanding long-lasting protection.**

Visit [www.greencast.co.uk](http://www.greencast.co.uk) for more information

 **Medallion<sup>®</sup> TL**

**syngenta.**

# Microsoft®

online learning

Only £10  
to BIGGA  
members  
per Skills Collection  
(+VAT)

## Microsoft Office 2007 and 2010 Skills Collections Now Available

- There is no limit to how many times you complete the course
- You have 12 months access to the programme
- All your learning takes place online and can be taken at a place and time to suit you

Microsoft online learning packages have been updated and now offer **Microsoft Office 2007** or **2010** applications as a **Skills Collection**.

Each Skills Collection includes beginners, intermediate and advanced training for each of the following applications: *Excel, Word, PowerPoint, Access and Outlook*.

Thanks to the support of the **Gold and Silver Key contributors** to the Learning and Development Fund (shown below), each of the Skills Collections is available to BIGGA Members for £10 + VAT.

*For further information, contact the Learning and Development Department on 01347 833800 Option 3.*



JOHN DEERE

Kubota



RANSOMES JACOBSEN  
A Tractor Company

syngenta



ARC  
legal assistance



HAYTER



Gallagher Heath

RAIN-BIRD



Vitax



Wiedenmann



BIGGA





# Greenkeeper Training



**A guide to the range of training provided throughout the UK**

**BIGGA is actively involved in raising the standard of Greenkeeper Training. The Association is a member of the Greenkeepers' Training Committee and strives to enhance the level of education through various means, including Section, Regional and National workshops, seminars and conferences.**

The range and quality of training now available throughout the UK means there is a training course for every greenkeeper.

This should improve the quality of greenkeeping and help to produce better quality golf courses to the benefit of all within the industry.

Golf Course Managers should ensure that their staff are trained to the highest standards.

This begins by selecting a training provider that meets the criteria laid down by the GTC.

There is a clear link between education, training and economic success and all clubs should invest in the education of their staff.

There are now a number of GTC Quality Assured Centres and Training Providers identified by the GTC Quality Assured logo



**Sami Strutt**  
**Head of Learning & Development**  
**BIGGA**  
**01347 833800**  
**sami@bigga.co.uk**  
**www.bigga.org.uk**

## SCOTLAND



**Cupar, Fife, KY15 4JB**  
**Contact: Michael.clark@sruc.ac.uk**  
**www.sruc.ac.uk/elmwood**  
**01334 658969**

Full-time National Certificate Greenkeeping, Block Release /Fast Track and Work-based Learning options for SVQ Levels 2 & 3 Sports Turf. SVQ Level 4 & 5 Management (online learning). HNC/D Golf Course Management (full time and distance learning), HNC/D Golf Facility Management (full time). Short course in Chainsaw, Tree Climbing and Rescue Techniques, Plant Operations, Pesticide Spraying and Noroso Certification/Courses



**50 Brook Street, Glasgow, G40 2AB**  
**Contact: Lesley Lowrie 0141-556-3999**  
**Fax: 0141-556-4999 learn@gostatraining.co.uk**

SVQ Level 2 and 3 and Modern Apprenticeship in Greenkeeping/Sportsturf and Landscape. Attendance Day release or Distance Learning. SVQ Level 4 Management is available with flexible learning options. Lantra and NPTC Industry related short courses with certification include Pesticide courses, Chainsaw, full range of Machinery training, First Aid and many more. Candidates may use their Individual Learning Account to fund many of the courses. Training courses are available in Glasgow and Edinburgh areas throughout the year.



## ENGLAND

# GTC QUALITY ASSURED CENTRES AND TRAINING PROVIDERS

A full list of GTC approved training providers can be obtained from the GTC. The Greenkeepers Training Committee (GTC) are continually reviewing the approved status of centres and training providers offering greenkeeper training courses.



For more information contact the GTC on: 01347 838640 or visit: [www.the-gtc.co.uk](http://www.the-gtc.co.uk)

## ENGLAND



**Stoke Climsland, Callington, Cornwall, PL17 8PB**  
**Rosewarne, Camborne, Cornwall, TR14 0AB**  
**Contact: Liz Clarkson 0845 609 9599**  
**liz.clarkson@duchy.ac.uk www.duchy.ac.uk**

A range of courses delivered throughout the South West: Levels 2 and 3 Workbased Diplomas and Apprenticeships in Horticulture including Greenkeeping and Groundsmanship. NVQ 4 Amenity Horticulture (Management). Level 2 and 3 Diplomas in Horticulture (including Sustainable Horticulture) FdSc and BSc (Hons) Horticulture. HND/HNC in Garden and Landscape Design. RHS Level 1, 2 and Advanced Certificate. Also short courses in pesticides, plant machinery vehicles, and chainsaws. Distance learning available via e-portfolios.



**Nantwich, Cheshire CW5 6DF**  
**Contact: Gareth Phillips 01270 613236**  
**enquiries@reaseheath.ac.uk**  
**www.reaseheath.ac.uk**

Block release, industry tailored, courses including Level 2 and Level 3 Work Based Diplomas and apprenticeships in Horticulture, Greenkeeping and Groundsmanship  
 Also full time Level 2 and Level 3 Diplomas in Horticulture.  
 Short courses include NPTC pesticide application, chain saw operation, safe use of mowers and manual handling.  
 Bespoke courses and overseas programmes available on request.  
 Please see website for details of open evenings and information events throughout the year.



**Worplesdon, Guildford, Surrey GU3 3PE www.merristwood.ac.uk**  
**Contact: Philip Mayes 07896 67 47 89 pmayes@guildford.ac.uk**  
**or Andrew McEvoy 07896 67 47 86 amcevoy@guildford.ac.uk**

Sports Turf Management NVQ Level 4 - on-line distance learning,  
 Sports Turf Diploma Level 3 - on-line distance learning, Sports  
 Turf Apprenticeship Diploma Level 3, Sports Turf Apprenticeship  
 Diploma Level 2, Automatic Turf Irrigation Systems NPTC Certificate  
 of Competence, NPTC Safe Use and Operation of Mowers, Tractor  
 Driving, Hedge Trimmers, Turf Maintenance Equipment & FEPA  
 Spraying, Safe Use of Aluminium Phosphide for Mole Control.  
 Please contact us for up-to-date listings, qualifications and advice on  
 courses and funding. Open evenings are held regularly at the College.



### Sports Turf Apprenticeship

**Study at: Pershore or Moreton Morrell Centre, one day fortnightly.**

**Qualification:** Intermediate/Advanced Apprenticeship in Horticulture, specialising in Sports Turf.

The apprenticeships in Sports Turf Management have routes in groundsman and groundkeeper. Apprenticeships are a great way for students to earn and learn and fantastic for employers to have trained and skilled staff. Short courses also available at both sites, covering PA1, PA2, PA6, Chainsaw, P & D, First Aid, Landscape design and many more.

Ask about training delivered on-site and bespoke courses for employers.

**Contact: Helen Dickson**  
**Call Pershore: 01386 551185 / Moreton Morrell: 01926 318307**  
**Mobile: 07864 933651. Email: hdickson@warkscol.ac.uk**



**OAKLANDS COLLEGE**

**Smallford Campus, Hatfield Road, St Albans,**  
**Hertfordshire, AL4 0JA**  
**Contact: Andrew Wight 01727 737735**  
**andy.wight@oaklands.ac.uk**  
**www.oaklands.ac.uk**

Oaklands College offers on demand, on-line learning in City and Guilds levels 2 (Craft), 3 (Supervisory) and 4 (Management) Greenkeeping, Sports Turf Management and Horticulture throughout the South East.  
 In addition we provide on-demand workbased apprenticeships at Levels 2 and 3.  
 Full time courses on offer include Level 2 in Greenkeeping and Sports Turf Management and Horticulture Entry L3 to Level 3.  
 We also offer short courses for PA1, 2 and 6.



**Plumpton College**

**Plumpton College, Ditchling Road, Nr Lewes, East Sussex**  
**BN7 3AE. 01273 890454 www.plumpton.ac.uk**

Apprenticeships offered at Levels 2 and 3. Diploma in Horticulture, Levels 2 and 3. Part time courses: Work based Diploma: Level 2: Greenkeeping, Groundsmanship, Landscaping and Horticulture. Level 3: Greenkeeping, Groundsmanship, Landscaping and Horticulture. Level 4 : Horticulture. RHS Levels 2 and 3, both Theory and practical. Short courses available, including FEPA Spraying and Chainsaw. Bespoke Training, e.g: Manual handling. Mower use and Maintenance. Risk Assessment. Strimmers and Hedgetrimmers.



# BE SEEN HERE

Your training provider could appear here, as an advert or listing, in our next edition of Greenkeeper Training

Get in touch with our Sales team on 01347 833800 to find out more

# GTC QUALITY ASSURED CENTRES AND TRAINING PROVIDERS



A full list of GTC approved training providers can be obtained from the GTC. The Greenkeepers Training Committee (GTC) are continually reviewing the approved status of centres and training providers offering greenkeeper training courses.

For more information contact the GTC on: 01347 838640 or visit: [www.the-gtc.co.uk](http://www.the-gtc.co.uk)



All the latest news from your Section, in your new-look notes pages...



# Around the green



Contact your Section correspondent with news, events or anything else for Around the green...



**CENTRAL**  
Gordon Moir  
Gordon.moir@standrews.org.uk

**AYRSHIRE**  
Jim Paton  
jimp54@btinternet.com

**EAST**  
Scott Corrigan  
scottcorrigan4@aol.com

**NORTH**  
Dale Robertson & Robert Patterson  
daleturnberry@btinternet.com / grassman351@aol.com

**WEST**  
Stuart Taylor  
stuart.taylor@glasgowgolfclub.com

and Lynn Jopling's presentation on the same day, you need to do this yourself online via the new system.

There are at least two Section members who have received R&A Scholarships that I am aware of, Robert McDowell and Stephen Robertson, well done to them. There may well be others. Congratulations also to Craig Boath from Carnoustie who was nominated to receive the Scottish patrons award from the Section.

Merry Christmas and Happy New Year to everyone.

## Ayrshire

Sad news from the Ayrshire Section. We are sorry to hear of the passing of several of our friends. Firstly Tom Parker, formerly at West Kilbride Golf Club, and Douglas McKinnie, also formerly of West Kilbride Golf Club. Also Andy Wills, lorry driver at Nairn Brown, and Colin Sutherland, former greenkeeper Largs Routenburn Golf Club. The entire section would like to pass on our condolences to all the families and friends concerned.

There were no changes to the make up of the Committee at our AGM. Euan Grant is still looking at educational opportunities for the future, please contact him for more details.

## East

Our recent Section AGM took place at Ravelston GC on 5 November with a low turnout on the day again, please guys can you make the effort to come along and join in with your section so we can improve along the way.

The day went well with the AGM being carried out, following this we had an educational talk from Jamie Lees from Everriss on 'Nutritional Values under the Current Financial Climate'.

We then enjoyed a light lunch prior to 9 holes of Stableford golf for the 'Jimmy Neilson Trophy', the trophy winner on the day was Alan Campbell (Edinburgh Leisure) with 18 points.

The new improved CPD scheme has been launched, with all members now being enrolled on the scheme, and individuals can now track their own progress and claim credits for education events attended through the new website link for the CPD Scheme that can be found at [www.bigga.org.uk](http://www.bigga.org.uk).

Excellent changes and much better for all involved, well done Bigga and chuffed to say the East Section thanks to Phil Butler are the first section to use this facility, without any hiccups I may add.

## Thanks to Sponsors

### East

Thanks go to Everriss for the Lunch provided at the AGM, your support is much appreciated by the section indeed.

## Welcome New Members

Amanda Dorans Assistant Greenkeeper Dundonald Links Golf Club; Andrew Wentworth Assistant Greenkeeper West Kilbride Golf Club; Gary Hamilton Student; Sean Harkness Greenkeeper Renaissance Club; Andrew Peattie Affiliate Member; Michael Skinner Assistant Greenkeeper Boat of Garten Golf Club.

## Events Coming Up

### Central

Our seminar at Auchterarder Golf Club is on 10 December. At the time of writing 20 of the 50 available spaces have already been booked and registration only opened 3 days ago so that's a good sign.

Our thanks to Auchterarder GC for the use of their facilities and to the speakers who have given of their time to support us.

The 2014 golf outings are confirmed as Kinghorn GC on Tuesday 29 April and Dunfermline GC on Tuesday 9 September.

### East

Social night booked for Friday 13 December at The Comedy Club, The Stand in Edinburgh, doors open at 7pm with the show starting at 9pm, cost of entry £12.

If you are interested in coming along to a great night and having a few laughs then please contact Jamie Martin ([jamie.martin77@sky.com](mailto:jamie.martin77@sky.com)) or 07852 954254) to book your place.

## News

### Central

Richard Jenkinson of gWest was elected onto the Section Committee at the AGM where Bob Meikle is beginning his second year as Chairman.

For those wishing to claim CPD credits for attending the AGM

# Northern

Contact your Section correspondent with news, events or anything else for Around the green...



**NORTH EAST**  
Glen Baxter  
glen.baxter@  
rigbytaylor.com

**NORTH WEST**  
Chris Sheehan  
jsheehan@  
blueyonder.co.uk

**CLEVELAND**  
Ian Pemberton  
ianpemberton60@  
yahoo.co.uk

**NORTHERN**  
Andy Slingsby  
andy.slingsby98@  
googlemail.com

**SHEFFIELD**  
Neil Peters  
neilpeters66@  
gmail.com

**NORTH WALES**  
Pete Maybury  
petemayb66@  
aol.com

## Events Coming Up

### North East

We have organised a course walk at Ramside golf club to look at the new holes this will take place on 11 December check Facebook and Twitter pages for details.

## News

### North Wales

The Christmas tournament and section AGM took place at Royal Liverpool on 25 November however the December magazine goes to print too early to have a write up in this month and news from the AGM.

We are also gauging interest in running a coach to BTME on 22 January.

Our section is now trying text message alerts and if your mobile is registered with BIGGA you should have already received an opt out message, we hope you find this new service helpful.

### Northern

Myself, Dave Collins and Simon Rothwell had the pleasure of representing the section in the Whitemoss sponsored inter-section competition at the lovely Lymm Golf Club.

Great day had by all but unfortunately we could not retain the trophy we won last year. 3rd place was a pretty good effort but we were beaten by a very fine performance from the boys from Sheffield.

Well done chaps. Special mention to Sandra for the organisation of the day.

### North East

Huge congratulations to David Thompson of Hexham GC who has been awarded an R&A scholarship

News from Wayne Reid at Intraining, part of Newcastle College Group. They offer both level 2 and level 3 Work-based Diplomas and Apprenticeships in Greenkeeping and Groundsmanship.

They work with many Golf Clubs around the North East.

For further details contact Wayne Reid on 07725150834 or email at wayne.reid@intraining.co.uk.

### Sheffield

All the committee would like to thank all the members for attending golf days and seminars over the last year. The Sheffield section would like to thank all the sponsors for doing this years events and also the golf clubs for letting us use their courses Bondhay, Dore & Totley, Hillsborough and also Worksop for the Christmas golf day. We hope you all have a nice Christmas and a good new year.

All the Sheffield Section are sorry to hear of the passing of Stewart Clayton, Managing Director of Greensman and long-term member of BIGGA. He was well-known to many in the Section and we would all like to pass our condolences to his family and friends at this sad time.

## Movers and shakers

### North Wales

On 1 October Oswestry GC promoted their Deputy Head Greenkeeper Gary Barnfield to Head Greenkeeper and also in October Gary completed 25 years service at Oswestry.

## Northern

Congratulations to John Osborne on his appointment at Baildon Golf Club.

## Welcome New Members

Stephen Virtue Greenkeeper Percy Wood Golf & Country Retreat; Paul Smith Head Greenkeeper Glossop & District Golf Club; Paul Kennedy Assistant Greenkeeper Heaton Moor Golf Club; Aaron Gandy Assistant Greenkeeper Turton Golf Club; Vincent Iveson Greenkeeper Hurlston Hall Golf & Country Club; John Eckersall Assistant Greenkeeper Turton Golf Club; Graham Capewell Affiliate Heswall Golf Club; Tom Deighton Student Askham Bryan College; William Goldstone Greenkeeper Moor Allerton Golf Club; David Goldstone Affiliate Tower Sport Ltd t/a Amenity Sales; Connor Foster Greenkeeper Barnsley Golf Club; Richard Peate Assistant Greenkeeper Oswestry Golf Club; Harry Kemp Greenkeeper Eastham Lodge Golf Club.

# Your notes

Based on feedback from the recent GI survey, we've refreshed and improved this section of the magazine.

Please send your news and photos in to your section correspondent or Steve Castle (steve.castle@bigga.co.uk) by the 10th of each month

## Midland

Contact your Section correspondent with news, events or anything else for Around the green...



**BB&O - The Stick**  
bboscribe@gmail.com or Matt Nutter  
bbosecretary@gmail.com



**MID ANGLIA**  
Darren Mugford  
d.mugford@rigbytaylor.com;



**MIDLAND**  
Sean McDade  
sean.mcdade@homecall.co.uk;



**EAST OF ENGLAND**  
Steve Beverly  
steveimingham@aol.com



**EAST MIDLAND**  
Greg Skinner  
greg.skinner92@btinternet.com

## Events Coming Up

### Mid Anglia

As the nights draw in and the temperature goes down we are getting ever closer to the annual pilgrimage to BTME. Hoping to see many from the section attending as is always good to catch up with some old friends and learn something new at the same time.

### East of England

Our Christmas Texas scramble invitation will be held this year at Lincoln Golf Club (Torksey) on Friday December 13. Please contact Bruce Hicks for details and to book places.

## News

### Mid Anglia

BIGGA Mid Anglia Section would like to wish everybody a Merry Christmas and Happy New Year.

### East of England

At the AGM the committee and all positions remained the same. The section reported a slight loss but that was mainly down to a donation to the Midland region and seminar expenses.

A seminar is planned for Newark in the Spring and work is underway to fill the fixture list. A possible away day is also being planned. Thanks went to everyone for their continued support.

## Midland

The Section AGM followed the golf at North Warwickshire. Your committee for the next 12 months are: President – John Hammond, Chairman – Ed Stant, Secretary – Andy Smith, Competitions & Deputy Chairman – Rhys Thomas, Treasurer – Steve Thompson, Committee – N. Tyler, K. Pugh, K. Williams.

Love me or loathe me, I am the product of my Father. He has just had a "one night lie in". Good night you old berk.

## Movers and Shakers

### East Midland

The only personnel change I am aware of at the time of is that after almost five years at Forest Hill Golf Club, I shall be moving on to take up the position of Course Manager at Gainsborough Golf Club. This represents a very exciting opportunity for me in terms of my career and the challenge that my appointment there represents. My predecessor, John Evison, spent almost twenty years in the role before retiring earlier this year and I shall endeavour to keep up the high standards that he set.

## Results

### Midland

Our Autumn Tournament was held at North Warwickshire Golf Club on 16 October with 21 competitors. Despite the weather restricting the day to 9 holes, the course was presented beautifully by Course Manager John Ganley and his team.

The results of the day were: 1 Clint Woodall 22pts, 2 Ed Stant 18, 3 Alex Brougham 16. As always many thanks to North Warwickshire for allowing us the use of the course for the day, especially the Captain Martin Higginson who was a charming host.

### East Midland

Lutterworth Golf Club on 31 October saw Carl Chamberlain (Rigby Taylor), Asa English and Derek Foster return a nett score of 61 to beat Matt Gilks (Farols), Nigel Colley and James Burberry with a 62 into the silver medal position. The podium was completed by James Moore (Farols), Derek McJannett and Greg Skinner with a score of 62.8. Longest Drives were won by James Burberry and Andy Lane (Countrywide) with Nearest The Pins won by Andy Marsh and Nick Ashman (John Deere). John Barr, Course Manager, and his team presented the course to a very high standard and did so after a substantial amount of rainfall over the previous few days.

AGM news: Carl Chamberlain of Rigby Taylor stepped down after several years of representing the trade on the East Midlands Committee and Matt Gilks of Farols was voted on. I would like to thank Carl, on behalf of the section, for all of his efforts and support that he has shown the section committee over the last few years. In addition Nigel White was also voted on to with part of his remit to help our RA, Sandra Raper, develop membership numbers within the section. Other than this all other committee members and officers were voted back on with no change to their roles.

### East of England

Spalding Golf Club 16th October - a rather poor turnout for the section AGM and golf day. 1 Rob Welford, 2 Bruce Hicks, 3 Rob Bemment (including an eagle 2 at the 10th!), 4 Russ Moody. Trade Gary Cooper.

Well done to Graeme Macdonald, Rob Bemment and Rob Welford for winning the Midland Region inter section trophy for the fourth time in five years. A superb 107 points tally including an impressive 40 point total from Graeme helped secure the win by a large margin. Well done again.

## Sponsors

### Mid Anglia

A massive thanks goes to ALS, Farmura, Avoncrop Amenity, Amtech Amenity, Tuckwells Machinery, Vassgro Amenity, Rigby Taylor Ltd and Headland Amenity for your continued support with funds towards the Mid Anglia Section which has made our section run successfully in 2013.

Banks Amenity also sponsor our Golfer of the Year Trophy again this year so once again your support means a lot and please consider these suppliers for your requirements the coming months and beyond into 2014.

### Midland

Many thanks to Campey Turf Care Systems, the prize sponsor for the Autumn Tournament at North Warwickshire. Their continued support is most appreciated. Also thanks to Whitemoss Eco, Sherriff Amenity and Countrywide for their nearest the pin donations. Finally thanks as always to Farols' Matt Gilkes and Kev Pugh for the drinks and snacks on the 1st tee.

Now we come to our ever faithful sponsors of our Section's fine calendar. I would like to apologise to Countrywide for not mentioning them last month, but you can still contact Andy Lane, Turf & Amenity Specialist on 07774 416429 or Email: [alane@countrywidefarmers.co.uk](mailto:alane@countrywidefarmers.co.uk).

This month's sponsor is Rigby Taylor and our old friend Tony 'Stilton' Cheese, he can be contacted on: 07778 665506 or email [t.cheese@rigdytaylor.com](mailto:t.cheese@rigdytaylor.com), please consider them for your fertiliser and chemical requirements.

### East Midland

Our thanks go to Farols for their generous sponsorship of the AGM competition and the quality prizes they supplied. In addition to this Mark Chamberlain of Tacit kindly organised the Longest Drives And Nearest The Pin prizes.

As ever, all trade representatives, either current or retired are always thanked for their support of our section events. This is either by their direct sponsorship, their presence or prizes donated at events. Thank you.

### East of England

Many thanks to all at Spalding Golf Club for their hospitality. Also to Steve Clarke and his staff for providing an excellent course despite the horrendous weather conditions limiting us to only 13 holes. This did however allow Steve Hopkins to get away in time for his M People concert! Thanks also go to Nigel Lovatt from Toro and Chris Sellars of Chris Sellars Groundcare for sponsoring the day and their continued support of the section.

Thanks again to White Moss Eco for sponsoring the inter section trophy. Thanks to all at Ashridge Golf Club for the course and hospitality afterwards.

## Welcome New Members

Richard McKay Affiliate Tacit; Ryan Upton Assistant Greenkeeper Rutland Water Golf Course; Garrett Edwards-Carter Assistant Greenkeeper Kirtlington Golf Club; James Bonser Greenkeeper Woburn Golf & Country Club; James Evans Greenkeeper Woburn Golf & Country Club; Joshua Martin Greenkeeper Woburn Golf & Country Club; Jack Lacy Greenkeeper Woburn Golf & Country Club.

# South East

Contact your Section correspondent with news, events or anything else for Around the green...



**SURREY**  
Mark Day  
[mark.day@tacitgolf.co.uk](mailto:mark.day@tacitgolf.co.uk)



**KENT**  
Rob Holland  
[premiergolf2012@hotmail.co.uk](mailto:premiergolf2012@hotmail.co.uk)



**SUSSEX**  
Chris Humphrey  
[chris@collier-turfcare.co.uk](mailto:chris@collier-turfcare.co.uk)



**EAST ANGLIA**  
Mick Lathrope  
[li.lathrope@ntlworld.com](mailto:li.lathrope@ntlworld.com)



**ESSEX**  
Arnold Phipps-Jones  
[essexbigga@talktalk.net](mailto:essexbigga@talktalk.net)



**LONDON**  
John Wells  
[j.wells1@sky.com](mailto:j.wells1@sky.com)

## Events Coming Up

**London** - The Xmas tournament is on Thursday 12 December at Verulam Golf Club and is followed by the AGM. To those that can't make I wish you all a Merry Christmas and Happy New Year from the London Committee and wish that you can make it to Harrogate as it's a great place to learn more and keep up to date in this fast moving industry. And meet for a drink after a day's work!

- Talking of learning, we can now confirm speakers for the London section education day on Tuesday 18 February at Oaklands College Welwyn Garden City. We have Murray Long - Sunningdale, Jon Lockyear - Roehampton (previously STRI), Stuart Yarwood MG - Lymm Golf Club, Rob Phillips - Sandy Lodge.

## News

**East Anglia** - Did not make Bury St Edmunds unfortunately, but understand that the course was in excellent condition, thanks to Steve Millard and his men, and the food was great.

## Results

**East Anglia** - Handicap 0 - 9 Nick Brewster 37, James Burton 34 (CB), Handicap 10 - 18 Nick Chase 43, Nick Howes 36, Handicap 19 - 28 Craig Cameron 35, Martin Brightwell - 30. Longest Drive 0-18 Adrian Hollins, 19-28 Nick Ashman. Nearest The Pin Andrew Howarth. Paul Craske, George Butters. Trade & Guest John Bishop 36, Brian Allan 34. Normal squit will resume as soon as possible.

## Thanks to Sponsors

**East Anglia** - Main sponsors were Tomlinson groundcare. Other sponsors were Aitkens, Everris, Symbio, Earnest Doe and Toro - if I have missed any out I apologise as information is limited.

## Welcome New Members

Tom Searle Affiliate Britrisk Safety Ltd; Colin Chapman Affiliate Coombe Hill Golf Club; Matthew Simmons Assistant Greenkeeper Westerham Golf Club; Robert Curry Course Manager Hockley Golf Club; Ross Mackie Greenkeeper Sundridge Park Golf Club; Grant Burger Course Manager Rustington Golf Club; Mark Townley Assistant Greenkeeper Rustington Golf Club.

## South West & South Wales

Contact your Section correspondent with news, events or anything else for Around the Green...



**SOUTH WEST –**  
Jaey Goodchild  
j.goodchild@  
bowood.org



**SOUTH COAST –**  
Tony Gadd  
greenkeeper  
bosgc@gmail.com



**DEVON &  
CORNWALL**  
George Pitts  
gpitts@  
yelvertongolf.co.uk



**SOUTH WALES**  
Andrew Hatcher  
andrewhatcher1@  
msn.com

## Events Coming Up

### South Wales

Friday 13 December we head to Pyle & Kenfig Golf Club, let's hope it's not unlucky.

### South West

A final reminder about our Section Christmas Tournament on 19 December, please note that this event will be held at Cotswold Hills Golf Club. Bacon rolls from 9.30, tee times from 10. Many thanks to Wayne Vincent for his assistance in organising this event.

### South Coast

South Coast Turkey Trot, Weybrook Park GC 10 December, if you haven't yet booked contact Tony on greenkeeper@gmail.com.

## News

### South Wales

The section has sponsored Greg Williams to attend BTME, don't forget to book your place.

Our recent tour of the Millennium Stadium was very informative. A big thanks to Craig Campbell for giving us an insight of the complex.

A huge thank you to Peter Holmstrom for his support and correspondence on Around The Green, well done mate.

A warm welcome to Tracey Harvey our new Regional Administrator.

### South Coast

Half day seminar and section AGM was well attended with 44. Mark Hunt from Headland gave us a great presentation, many thanks Mark for your time. This format will be repeated next year to gain a good cross section of members views.

Welcome to Jamie Acton on joining the section committee. The committee nominated Joe Cooper for the sponsored place to BTME, well done Joe for your hard work and ongoing support.

### South West

Our education coordinator Paul Worster has been very busy organising training sessions for excavator training, please contact Paul (paulw@mgcnew.co.uk) should you wish to reserve a place on these popular courses. Additionally we are seeking interest in abrasive wheel certification training, again please contact Paul for details.

Once again the section will be sponsoring a place to attend BTME in January 2014 to include accommodation, transport and education. Please contact any of the committee members to express your interest in this fantastic opportunity.

Finally, we are in the process of updating our contact details for all South West section members, it would be huge help if all section members were to drop me a quick email to confirm your name and email address.

## Results

### South Wales

Results from Machynys Peninsula GC: 1 Rhys Mcdonagh 32, 2 Jamie Probert 31, 3 Big D 30. Longest Drive Ian Kinley. Nearest the pin Rhys Mcdonagh & Ian Kinley. Thanks to Marcus Weaver and his staff for the fantastic presentation of the course and holding our autumn tournament & AGM.

## Thanks to Sponsors

### South Coast

Sponsors for the half day seminar and AGM were Countrywide, many thanks to them.

### South West

Special thanks to all of our Section Patrons for their ongoing support: EcoSol, Greensman, Irritech, Headland Amenity, Countrywide and Farmura.

## Welcome New Members

Gavin Rogerson Assistant Greenkeeper Kendleshire Golf Club;  
Seamus Moriarty Deputy Head Greenkeeper Basingstoke Golf Club;  
Eduardo Vargas Greenkeeper Celtic Manor Resort South Wales;  
Thomas Frampton Assistant Greenkeeper Morlais Castle Golf Club.  
International: Goran Hansson Affiliate Swedish Golf Federation.

# IT'S THE HARD ROAD TO HARROGATE!

**RANSOMES  
JACOBSEN**  
A Textron Company

[www.bmycharity.com/hardroadtoharrogate](http://www.bmycharity.com/hardroadtoharrogate)





# Online Safety Management System



## The BIGGA/GCMA Safety Management System (SMS) provides:

- All golf clubs with Golf Industry Standard Risk Assessments.
- All golf clubs with a SMS tailored to their needs.
- Golf Club Managers with practical help to meet their legal obligations.

## Why do you need it?

- It is a key obligation of health and safety legislation.
- It is required by HSE guidance.
- It gives protection to employees and senior management.

## The Safety Management System helps golf clubs:

- Prevent avoidable accidents.
- Meet the best standards of the golf industry.
- Reduce the costs.

## Besides an SMS Policy, there are seven key areas to be considered when developing a full SMS at a golf club:

1. Greenkeeping activities
2. Maintenance facility
3. Golf course
4. Clubhouse
5. Kitchen
6. Pro shop
7. Fire safety

Within each of these areas, users can access the following downloadable documents:

- Risk Profile (available in word and excel formats)
- Risk Assessments relevant to that area of the golf club
- Hazards - information and weblinks

For further information contact:



# Membership Benefit



BIGGA  
01347 833800  
www.bigga.org.uk



GCMA  
01934 641166  
www.gcma.org.uk

Access via the Members Area of [www.bigga.org.uk](http://www.bigga.org.uk), in Member Resources



# Greenkeepers Training Committee

In a new series, the GTC has invited representatives from its Quality Assured Centres and Training Providers to discuss their particular specialism within the sports turf sector

This month Jake Waites from Bridgwater College explains his education vision and discusses the question “What makes a great Head Greenkeeper?”

**During BTME 2013 the GTC invited its Quality Assured Centre sports turf representatives to meet with Quality Assured Training Providers. This was designed to encourage sharing of human and physical resources between Centres and Providers.**

The event proved very successful and David Golding, GTC's Education Director, is continually hearing excellent examples of its QA Training Providers being invited to QA Centres both to share specialist subject knowledge and in some situations equipment and machinery.

David explained: “Many companies and their knowledgeable staff would love to support and contribute more but until the introduction of the GTC Quality Assured Scheme in 2010 it was impossible for companies to support the many colleges and private companies offering sports turf courses and qualifications.

“However, now with a limited number of QA Centres - two in Scotland, two in Wales and six in England - it is now far easier to develop a strong Centre – Training Provider partnership.

“QA Centres offer the formal government accredited qualifications however they are also best placed to compliment these courses with specialist short-courses, workshops and seminars.”

David invited Jake Waites, Sports Turf Trainer/Assessor at GTC's Quality Assured Centre, Bridgwater College, Cannington Centre to explain his Centre's vision on how best to provide both formal and informal education and training courses, workshops and seminars to best suit employers and sports turf students needs with input from QA Training Providers and guest presenters. Here are Jake's views.

## What makes a great Head Greenkeeper?

I would propose that the lines are becoming increasingly blurred. You live and die on the quality of your greens' used to be the maxim but with the development of the game and the increasing complexities involved in successfully managing a golf course, is it still enough just to deliver consistently high quality surfaces? It would be nice to be able to say 'yes' to this but is that still really the answer?

I am not suggesting for a minute that the hard earned knowledge and ability that goes into presenting your golf course is in any way redundant but how often have you found yourself thinking 'I used to be a greenkeeper, now I'm an Administrator/Communications expert/Finance and Human Resources manager as well!' With this being the case, how can you ensure that you still have the skills to meet the challenge?

For those entering our industry as apprentices, for assistants with a level of previous experience who are looking to build on it and for those who have aspirations to be the next generation of Head Greenkeepers and Course Managers, the training paths remain familiar and well travelled.

As one of the GTC's quality assured training centres, here at Bridgwater College's Cannington Centre our primary focus is to ensure that all these groups receive the training they require. We still feel that the Work Based L2 and L3 Diplomas (formerly known as NVQ's) offer the best solution both for the student and the employer, offering as they do a combination of real on-job experience and underpinning knowledge delivered in the classroom or workplace.

However, for those who have achieved a more senior level and for



The GTC is funded by:



those ready to make a step up, the available routes are sometimes less obvious.

There are excellent options for further and higher levels of study and these programmes have helped drive the standards within our industry to higher and higher levels, but in the increasingly pressurised working environments which managers and supervisors find themselves in, the time commitment involved can prove to be a significant obstacle.

So, how can we address this training shortfall without having to use up too much of this precious commodity?

An excellent means of continuing your professional and personal development is to carry out a SWOT analysis of current abilities and then target events and short courses that meet the shortfalls



you have identified. This may be by approaching your local college, through BIGGA's excellent Continue to Learn programme at BTME, through regional seminars and workshops or GTC events.

The workshop model in particular provides an excellent opportunity to learn new skills, discuss techniques and share best practice with your peers in an interactive environment.

Earlier this year we ran the first in a series of workshops entitled "Smarter Greenkeeping". Guest speakers at the first session were Laurence Pithie from Turf Master One training and Paul Worster, Course Manager at Minchinhampton Golf Club and former BIGGA Chairman.

The first workshop covered all aspects of bunker renovation and maintenance, using various case

studies as examples and their personal experience which spans over 70 years in the business.

The second workshop focused on how greenkeepers can be more influential in the workplace and how presentations for capital expenditure can be made more effectively.

We have worked closely with Laurence in developing future topics for the series.

Our upcoming events are:

12 December 2013

**Greens Performance**

13 February 2014

**Planning & Budgeting**

13 March 2014

**Managing with less**

In addition to Laurence's input, we will also look to incorporate both other GTC Quality Assured Train-

ing Providers and some of the local talent! Here in the south west of the country we are blessed in having some of the most experienced and knowledgeable minds in the industry (we are after all in Jim Arthur's parish). It is a tribute to the industry in which we work in that these busy people are so willing to give their time to share their experience and best practice.

**For course enquiries contact Helen Goodland: [Goodlandh@bridgwater.ac.uk](mailto:Goodlandh@bridgwater.ac.uk) or Tel: 07753 311160**

**To register on workshops contact Jane Wagner, Commercial Manager, Cannington Centre for Land Based Studies, Bridgwater College, Cannington, Bridgwater, Somerset TA5 2LS.**

**[WAGNERJ@bridgwater.ac.uk](mailto:WAGNERJ@bridgwater.ac.uk)  
Tel 01278 655065  
Mobile 07917 475641**

#### Contact Details

David Golding  
GTC Education Director  
and European Greenkeeping  
Education Unit Standards  
Director

01347 838640  
[david@the-gtc.co.uk](mailto:david@the-gtc.co.uk)

GTC  
Aldwark Manor  
Near York  
YO61 1UF

[www.the-gtc.co.uk](http://www.the-gtc.co.uk)  
[www.egcu.eu](http://www.egcu.eu)  
[www.greenkeepertraining.com](http://www.greenkeepertraining.com)



You can follow the GTC on  
Twitter @TheOfficialGTC

# BUYERS' GUIDE

## Is your club a hazard waiting to happen?



**Gripclad Ltd have developed an affordable very long term solution which instantly eliminates slip hazards on railway sleepers and all types of timber steps and decking using GRP Composite CLEATS.**

### What they say...

"Highly recommend Gripclad for first class products and fast efficient service" – Gail Carpenter, MD Southport Golf Academy

"It is truly non-slip, easy to install and we are proud to endorse their product" – Simon Newland, Club Secretary, Hillside Golf Club

"This products makes the steps easy and safe to walk on in all conditions" – Jonathan Wood, Course Manager, Enville Golf Club

"The overall wear tolerance is excellent. I would recommend Gripclad to any golf club with slippery surface issues" – Scott Aitchinson, Deputy Course Manager, Royal Dornoch Golf Club

Avoid Slip Hazard liabilities by preventing them in the first place.



**For free advice and information call:**

**Gripclad Ltd  
Tel: 023 8040 6796**

**Contact  
Barry Eagle**

## CATEGORIES

- AERATION
- ALL WEATHER SURFACES
- ARTIFICIAL GRASS
- ANTI SLIP
- BUNKER CONSTRUCTION
- CLOTHING/FOOTWEAR
- COMPACT TRACTORS
- CONSTRUCTION
- DRAINAGE
- FINANCE & LEASING
- FLAGS
- HEDGES/TREES
- IRRIGATION
- IRRIGATION CONSULTANTS
- LAKE CONSTRUCTION LINERS
- MACHINERY FOR SALE
- MACHINERY WANTED
- RUBBER CRUMB
- SOIL FOOD WEB
- TOP DRESSING
- TREE MOVING
- TREE CLEARANCE
- TURF RENOVATION EQUIPMENT
- USED MACHINERY
- VERTIDRAINING HIRE
- WASTE/WASHWATER TREATMENT

## ALL WEATHER SURFACES



All-Weather Surfaces For Your Golf Club

- \* Pathways
- \* Tees
- \* Putting Greens
- \* Golf Mats
- \* Fairway Mats
- \* Accessories

Ensure the course is playable all year round



Tel: 01254 831666 Fax: 01254 831066  
Email: sales@verdesports.com  
www.verdesports.com



PREMIER ALL-WEATHER SURFACES FOR GOLF



Huxley Practice Tee at St Andrews Links

Top quality practice tees, golf course tees, putting & pitching greens, pathways, patios, cart tracks and lawns professionally designed and installed.

Tel: 01962 733222  
sales@huxleygolf.co.uk  
www.huxleygolf.com



## BUNKER CONSTRUCTION

**blinder** ECO PATH



The natural pathway solution  
01344 621654  
www.theblinder.com

## CONSTRUCTION

**MJ ABBOTT** LIMITED



GOLF COURSE SPECIALISTS

- GOLF COURSE CONSTRUCTION
- REMODELLING & RENOVATION
- GROW IN & MAINTENANCE
- SPORTSGROUND CONSTRUCTION

Tel. 01722 716361  
www.mjabbott.co.uk

**M. Downes Earthworks**

- Golf Course Construction Services
- Green and Tee Reconstruction
- Lakes and Reservoirs • Cart Paths
- Bunker Remodelling • Drainage
- Lakes and Reservoirs

07753 856510 01829 781767  
mdownesgolf@live.co.uk

Photo courtesy of Ridding Park  
Repton Short Course 'Signature Island Green'.



**JOHN GREASLEY LTD**  
Specialists in Golf Course Construction

Tel. 0116 2696766

**SPEEDCUT**  
CONTRACTORS LTD

**SPORTSTURF & GOLF COURSE**

- CONSTRUCTION
- DRAINAGE
- RENOVATION

Oxford 01865 331479  
www.speedcutcontractors.co.uk

## DRAINAGE

Look at the latest...  
**Second Hand Machinery**  
...for sale  
[www.bigga.org.uk/classifieds](http://www.bigga.org.uk/classifieds)

Scotland Based

## Meiklem Drainage Contractors Ltd

Sportsturf Drainage Specialists  
Golf Courses - Sportsfields  
Drainage \* Construction  
\* Slitting/Banding  
**Contact Meiklem Drainage on:**  
T: 01383 830217  
M: 07808 897 300  
[john.meiklem@meiklem.com](mailto:john.meiklem@meiklem.com)  
[www.meiklem.com](http://www.meiklem.com)



## Golf Course Drainage

Survey / Design / Installation / Greens / Fairways / Bunkers / Complete Courses Plastic Pipe / Turfdri Drainage System

For fast and friendly Nationwide Service

Contact Melvyn Taylor: 01283 551417  
07836 259133 / [melvyn@turfdri.com](mailto:melvyn@turfdri.com)

[www.turfdri.com](http://www.turfdri.com)

## GOLF COURSE MACHINERY

Coring without the mess!

THINK  
**GreenTek**



Scan here for the solution or call us on  
0113 267 7000  
[www.greentek.org.uk](http://www.greentek.org.uk)

## IRRIGATION

**MJ ABBOTT**  
LIMITED



## IRRIGATION SPECIALISTS

- DESIGN & SUPPLY
- INSTALLATION
- MAINTENANCE

Tel. 01722 716361  
[www.mjabbott.co.uk](http://www.mjabbott.co.uk)

## IRRIGATION

**The TAS TRIMMER**  
**SPRINKLER HEAD MAINTENANCE**  
**AND SAFETY MADE EASY**  
from £23 +VAT

All popular  
sprinkler,  
valve box  
& marker  
sizes



[www.jsmd.co.uk](http://www.jsmd.co.uk)  
tel. 0845 026 0064



## LAKE CONSTRUCTION LINERS



Supply and installation of plastic liners for golf lakes and ponds

Tel: 01206 262676  
[www.geosynthetic.co.uk](http://www.geosynthetic.co.uk)

## RABBIT CONTROL/ MANAGEMENT

## ERS Developments Ltd

Wildlife Management Specialists

- Rabbit control/ Management
- Japanese Knotweed Eradication (guaranteed in one growing season)

01296 468514

e-mail: [ersoffice@btinternet.com](mailto:ersoffice@btinternet.com)  
[www.ersenvironmental.co.uk](http://www.ersenvironmental.co.uk)

## MACHINERY WANTED

**Invicta Groundcare**  
Equipment Ltd  
**We buy used golf course machinery**

Contact: Steve Dyne  
Tel No: 01474 874 120  
Email: [invictagroundcare@live.com](mailto:invictagroundcare@live.com)

## NON-SLIP

PROFESSIONAL SAFETY FLOOR SOLUTIONS  
**GRIPCLAD**  
ANTI-SLIP STAIR & FLOOR SURFACES



## WINTER SAFETY ON THE TEE

Composite anti-slip panels provide a hard wearing, long term safety solution for railway sleeper steps. Resistant to spiked shoes, weather and chemicals.

[www.gripclad.co.uk](http://www.gripclad.co.uk)  
[enquiries@gripclad.co.uk](mailto:enquiries@gripclad.co.uk)  
02380 406796

## RUBBER CRUMB

## TEBBUTT ASSOCIATES

RUBBER CRUMB

Crown III rubber crumb for natural grass reinforcement by mixing with the root zone or verti draining in from the surface  
Rubber Crumb 0.5-2mm for infilling of synthetic turf on tees and pathways  
Rubber Grass Mats for severe wear areas

Contact Tebbutt Associates  
on 01253 342003 or Fax 01253 346644  
e-mail: [tebuttasso@btconnect.com](mailto:tebuttasso@btconnect.com)  
[www.tebuttassociates.co.uk](http://www.tebuttassociates.co.uk)

## TOP DRESSINGS



Producers of quality Top dressings, Specialist sands, Rootzone soils, Grit, Gravel and Pathway materials for Golf Courses, Playing Fields and Sports Pitches  
Cowbog, New Pitsligo, Fraserburgh, Aberdeenshire, AB43 6PR  
Tel: 01771 653777  
email: [sales@lovie.co.uk](mailto:sales@lovie.co.uk)  
[www.lovie.co.uk](http://www.lovie.co.uk)

*Banks Amenity Products Ltd.*

FOR ALL YOUR BULK SUPPLIES  
NATIONWIDE DELIVERIES  
01858 464346 / 433003  
[www.banksamenity.co.uk](http://www.banksamenity.co.uk)

## TRAINING

**Lowe Maintenance**  
For all your training needs

We offer courses that are recognised qualifications certificated through City and Guilds. We can come to you for a range of courses which include: Pesticides (PA1 and PA6), Brushcutter, Strimmer, Hedge trimmer, Pole Saw, Tractor Driving, Chainsaw Maintenance (CS30), Felling Small Trees (CS31)

Contact Phill Lowe at  
[pglowe@hotmail.co.uk](mailto:pglowe@hotmail.co.uk)  
or [www.lowe-maintenance.co.uk](http://www.lowe-maintenance.co.uk)  
or Call 07974812736

## TURF

**Lindum**  
taking grass a step further

20 years of golf turf experience  
5 golf grades including high bent Greens on USGA rootzone, RTF for stabilisation/drought tolerance, Wildflower Turf, and new Low Maintenance turf

Tel: 01904 448675  
[www.turf.co.uk](http://www.turf.co.uk)

## TURF

**Tillers Turf**  
growers of fine turf

**Specialist Growers of Turf for Golf Courses**

## Rootzone Turf for Greens

Grown on USGA rootzone, top-dressed throughout the year, and mown at 6mm.  
Predominantly bent sward

## Turf for Tees, Surrounds, Approaches and Fairways

Various mixtures including ryegrass/fescue, 100% fescue, and bent/fescue grown on sandy loam topsoil.

## Bunker revetting turf

40mm thick  
Small or big roll  
Free loan of big roll laying frame

Tel: 01652 678 000  
[www.tillersturf.co.uk](http://www.tillersturf.co.uk)

## USED MACHINERY

[www.usedturfmachinery.com](http://www.usedturfmachinery.com)

## VERTIDRAINING HIRE

**PETER MANNINGTON**



**Professional Verti-Drain and Earthquaking Contractor**

Experienced operator, competitive prices and reliable service  
Tel/Fax Peter on 01580 861211  
or Mobile 07850 612061  
1 White Horse Cottages, Silverhill, Hunt Green, Ectingham, East Sussex TN19 7QA

## WASTE/WASHWATER TREATMENT

**Waste2Water**

**BIOLOGICAL VEHICLE & EQUIPMENT WASH-OFF SYSTEMS**

ESD Waste2Water Europe Ltd.

Tel: 01782 373 878

Fax: 01782 373 763

E-mail: [info@waste2water.com](mailto:info@waste2water.com)

Web: [www.waste2water.com](http://www.waste2water.com)



**Dan McGrath**  
Master Greenkeeper

# MASTER GREENKEEPER

## C E R T I F I C A T E

The Master Greenkeeper Certificate is awarded to those greenkeeper members of BIGGA who have reached the highest standards of greenkeeping and golf course management.

It is a prestigious industry award gained by

- Experience as a greenkeeper
- Through formal and informal training
- Golf course management assessment
- A rigorous, two-part examination

All Full, Associate and International members of BIGGA are eligible to join and earn Stage 1 Credits. Applicants must be Course Managers (Superintendents)/Head Greenkeepers to progress to Stages 2 and 3.

Do you have what it takes? Download an application form at [www.bigga.org.uk](http://www.bigga.org.uk) by clicking on Education.



## BIGGA Lending Library

### BIGGA MEMBERSHIP BENEFIT



sponsored by  
**JOHN DEERE**

**Hundreds of books are available in our Lending Library**

...simply click on the 'Lending Library' tab in the Members' section of the BIGGA website

**[www.bigga.org.uk](http://www.bigga.org.uk)**



## BIGGA Higher Education Scholarships

supported by



may be awarded if you are a full BIGGA member studying for the following qualifications:

- N/SVQ Level 4
- Higher National Certificate
- Foundation Degree/HND
- BSc Turf Management

### BIGGA MEMBERSHIP BENEFIT

To find out more contact BIGGA L&D on 01347 833800 (option 3)



# BALMERS GM

T: 01282 453900  
 E: sales@balmersgm.com  
 Visit our new website  
[www.balmersgm.com](http://www.balmersgm.com)

## Chippers

Greenmech 6" Chipper (15-23) c/w: 34hp T-Diesel engine, twin hyd. feed rollers - 1332hrs	£7'500
Greenmech 6" Chipper (15-23) c/w: 34hp T-Diesel engine, twin hyd. feed rollers - 116hrs	£11'500
Greenmech 7" Chipper (19-28) c/w: 50hp diesel engine, twin hyd. feed rollers	£10'000
Greenmech 7.5" SAFE TRAK Chipper, c/w: 50hp diesel engine, track ext. system - 1919hrs	£12'000
Greenmech QUAD CHIP 6" Chipper, c/w: 34hp T-Diesel engine - 123hrs	£13'750
Greenmech QUAD TRAK 6" Chipper, c/w: 34hp diesel engine, rubber tracks, 270 deg. turntable, 30 deg. tilting bed, 4-sided Quad Chip blade system - 116hrs	£ POA
TimberWolf TW150DHB 6" road-towed chipper, c/w: 35hp diesel engine - 207hrs	£9'750
TimberWolf TW190FTR 7.5" Tracked Chipper, c/w: 35hp, trailer avail. (sold separately) - 414hrs	£13'000
TimberWolf TW75/230 9" road-towed chipper, c/w: 75hp diesel engine - 552hrs	£9'750

## Debris / Leaf Management Equipment

Trilo SU40B road towed vacuum truck loader - choice of 8	from £3'000
Trilo BL400 leaf blower, tractor mounted, runs off PTO, req. min 45hp to operate - hire machine	£ POA
Trilo SG400 Vacuum/Sweeper/Collector - road towed, runs off PTO, tips to 2m for emptying	£10'000
Wiedenmann Whisper Twister blower, runs off PTO, req. min. 30hp to operate. Stand included	£9'250

## Utility Vehicles

John Deere 6X4 diesel Gator, c/w: power lift tipping kit and bedliner - 898hrs	£4'500
John Deere TH6X4 diesel Gator, c/w: 21hp, power lift tipping kit - 83hrs	£9'250
John Deere XUV550 Gator - EX DEMO	£ POA
John Deere XUV855D Gator - EX DEMO	£ POA

## Compact Tractors

John Deere 4115, c/w: 24hp, hydraulic transmission power steering, turf tyres, roll bar - 1976hrs	£7'000
Kiotti DK551C, c/w: 54hp, gearbox, cab, turf tyres - 612hrs	£15'500
Kubota ST30, c/w: 30hp diesel engine, 4WD, turf tyres, roll bar - 3601hrs	£4'750
Kubota L3830D, c/w: 38hp diesel engine, 4WD, hydraulic transmission, turf tyres, roll bar - 319hrs	£11'000
Massey Ferguson 1528, c/w: front brush, 28hp, 4WD, turf tyres, roll bar - 430hrs	£11'570
New Holland TN75s, c/w: 72hp, 4WD, cab, turf tyres - 3353hrs	£12'500
Yanmar FE280H, c/w: 28hp, 4WD, turf tyres, roll bar - 234hrs	£9'500
Mitsubishi FG20NT FORK LIFT TRUCK, max load: 2000kg, fuel: gasoline	£4'500

## Clearance Machinery

Ryobi (NEW) RCS4040CA Petrol Chainsaw - 16" bar (shop soiled)	£ 124
Stihl BR380 Back-Pack Blower	£ 218
Allett (NEW) 6 blade cartridge to suit Allett C20	£ 500
Allett Buffalo 24" Cylinder Mower - EX DEMO	£2'350
Hayter TMS39 - Trailed Gang Mower	£4'000

All machines (unless otherwise stated) are subject to VAT, come fully serviced and a 90 day warranty  
 Nationwide delivery available - Visit our website for more machines, photos and information

**Over 500+ quality used commercial ground care machines IN STOCK NOW!!**

Balmers GM, Trafalgar Street, Burnley, Lancs, BB11 1TQ



# M B WILKES

ESTABLISHED 1964

## QUALITY PRODUCERS OF

Sands for bunkers & top dressing

Top Dressings

Root Zones

Topsoil: 3mm, 10mm & 20mm



▲▲▲ 01258 857465 ▲▲▲

info@mbwilkes.com www.mbwilkes.com

Henbury Quarry, Old Market Road, Corfe Mullen, Wimborne, Dorset, BH21 3QZ

# Recruitment



## Seasonal Greenkeepers Required



Notteroy Golfbane is situated on the island of Notteroy in Norway, 1 hour south of Oslo. We require greenkeepers for the 2014 season to help continue the development of one of Norway's finest golf courses. The successful candidates will show a willingness to learn and carry out all jobs associated with daily golf course maintenance to high standard. Located in the Oslo fjord just outside Tonsberg, "Norway's oldest town" we guarantee experience and training on a wide range of machines as well as experiencing the Norwegian summer at its best.

### Working hours, Salary and Benefits.

- The working week is 37,5 hours. ( Overtime and weekend work is expected )
- Hourly salary of 135,- Norwegian Kroner. ( ca. 14 GBP) Overtime will be paid at an additional 40%
- Initial flights to and from Norway will be provided.
- Full playing rights on the golf course and training facilities.
- Full working uniform and PPE will be provided.

Please apply before the 31st December with a CV to [logan@notteroygolf.no](mailto:logan@notteroygolf.no)

## STAVANGER GOLF CLUB, NORWAY - 1st Assistant Greenkeeper

SGK is a beautiful 18 hole championship woodland course built in 1956 on the edge of Stokka lake on the west of Stavanger. We are seeking the services of a qualified GK to join our staff, and be responsible for the maintenance and development of the greens.

An NVQ 3 in Sports Turf Management or equivalent is preferred  
Minimum 5 years in the industry and 3 years in a supervisory role  
PA1, PA2 and PA6A spraying certificates  
Good working knowledge of automatic irrigation systems  
A good understanding of short season golf  
CS31 and CS32 chainsaw certificates would be beneficial

For full details please contact or to apply please send a CV to:  
Inge Ullestad, Head Greenkeeper, Stavanger Golfklubb  
[inge@sgk.no](mailto:inge@sgk.no) or call 0047 92450952  
Latest 31st Dec 2013



Loch Lomond Golf Club, located just North of Glasgow, boasts some of the most breathtaking scenery in the world of golf, with the Scottish Highlands, majestic mature trees, the loch and the old Mansion House providing a perfect backdrop to an exceptional 7,100 yard parkland golf course designed by Tom Weiskopf.

We are currently recruiting for enthusiastic and ambitious individuals to complement our full time team for the 2014 golfing season, employment starting in March or April.

This fantastic opportunity is a wonderful chance to progress and develop your golf course management and turfgrass knowledge.

Comprehensive training and exposure would include:

- Managing and preparing world class playing conditions on a daily basis
- Managing USGA Greens and Turf Management following an IPM approach
  - Drainage installation and extensive organic matter programmes
  - Various golf course construction projects
  - Estate and Ecology Management
- Operation and maintenance of a sophisticated extensive fleet of golf course equipment

You can find further information about Loch Lomond on our web page [www.lochlomondrecruitment.com](http://www.lochlomondrecruitment.com)

To apply for a position or find out more information please email or post a covering letter and C.V along with a minimum of 2 references to:

Mary Danielsen, Golf Course and Estate Administration Manager,  
Loch Lomond Golf Club, Rossdhu House, Luss (by Alexandria), Dunbartonshire  
G83 8NT Scotland.  
Email: [mary.danielsen@lochlomond.com](mailto:mary.danielsen@lochlomond.com)



## FAST TRACK TO THE FUTURE !

**TRAIN ON A TOP 100 GOLF COURSE IN THE USA !  
BE PART OF THE CREW FOR A US PGA TOUR EVENT !  
IMPROVE YOUR LONG TERM CAREER PROSPECTS !  
GAIN VALUABLE EXPERIENCE & KNOWLEDGE FROM THE  
BEST SUPERINTENDENTS IN AMERICA !**

## GUARANTEED TO GET YOU AHEAD OF THE COMPETITION

**REQUIREMENTS:  
CLEAN DRIVING / DRUG RECORD  
MUST BE ENTHUSIASTIC AND MOTIVATED  
MUST HAVE AT LEAST NVQ 2 OR ONE YEAR OF FULL TIME  
TURFGRASS EDUCATION**

**PROGRAMS FROM 6 TO 18 MONTHS  
HELP WITH VISAS, TRAVEL PLANS AND INSURANCE  
PLACEMENT AND ACCOMMODATION ARRANGED  
AVERAGE WAGE \$2,200.00 PER MONTH  
OPTIONAL ONLINE TURF CLASSES AVAILABLE**

FOR MORE DETAILS CONTACT:

**Mike O'Keeffe**, The Ohio Program

Telephone: 001-614-688-5653

E-mail CV to: [okeeffe.1@osu.edu](mailto:okeeffe.1@osu.edu)

[www.ohioprogram.org/applynow/IA.php](http://www.ohioprogram.org/applynow/IA.php)



## West Surrey Golf Club COURSE MANAGER

After 38 years, our current Course Manager is retiring at the end of June 2014. West Surrey is set within enviably tranquil Surrey Hills countryside. The 6477 yard Par 71 parkland course designed by Herbert Fowler in 1910, features tree lined fairways leading to top quality USGA greens of this private members club.

The new Course Manager will take personal responsibility for ensuring that member and guest expectations are consistently met or exceeded. The successful candidate should be fully qualified and ideally have the following attributes:

- Manage and supervise the greenkeeping team, demonstrating high levels of management skills, communication and leadership.
  - Manage budgets, finance and resources.
  - Manage the golf course and environmental policies.
- Appraise, train and assess the greenkeeping team and review the current structure.
  - NVQ Level 4 or equivalent; with PA1, PA2 and PA6 spraying certificates.
- Previous experience as a Course Manager and working with USGA greens is desirable.

Closing date for Applications is 20th December 2013.

Interviews are expected W/C 20th January 2014.

Please forward your CV to: Richard Hall, Secretary Manager,  
West Surrey Golf Club, Enton Green, Godalming, Surrey GU8 5AF. Email:  
[richardhall@wsge.co.uk](mailto:richardhall@wsge.co.uk)



## Regional Sales Managers - Turf maintenance equipment (North of England and South-east England)

As a Regional Sales Manager you will be required to implement the sales strategy for our broad range of turf maintenance equipment across your territory, analyse market potential and effectively manage our distribution to consistently achieve your sales targets. New business development will be a major function of this position with a focus on increasing market share within your territory. These two open positions are for the north of England and the south-east of England respectively.

The four successful candidates will have excellent interpersonal, written and spoken communication skills. In this role some overnights stays away from home will be required. Prior field sales or sales management in the turf care or a vehicle-related industry is a requirement. Alternatively, a sound knowledge of the golf industry would be an advantage.

Ideally, you will have a degree or 'A' level qualifications, be I.T. literate and have a clean driving licence. These positions require highly motivated, enthusiastic and energetic people who would like to join a progressive industry leader. We offer regular performance appraisals, a pleasant working environment, a salary commensurate with the position and additional benefits that you would expect from a company such as ours.

## Regional Sales Managers – E-Z-GO/Cushman

(South of England and North of England/Scotland and Ireland)

As a Regional Sales Manager you will be required to implement our sales strategy for E-Z-GO golf cars and Cushman light utility vehicles across your territory, analyse market potential and consistently achieve your sales targets. New Business development will be a major function of this position with a focus on increasing market share within your region. These two open positions are for the combined north of England/Scotland and Ireland territory and the south of England.

If you meet these criteria and are seriously interested in this position, please send your CV to:

**Carol Mellelieu, Human Resources Director**  
**Ransomes Jacobsen Ltd**  
West Road  
Ransomes Europark  
Ipswich IP3 9TT  
Email: [cmellelieu@tip.textron.com](mailto:cmellelieu@tip.textron.com)

To arrive no later than Friday 17th January 2014  
(No agencies)



Ransomes Jacobsen is one of the world's leading manufacturers and distributors of commercial mowers, turf maintenance equipment, golf cars and light utility vehicles. Due to recent promotions and expansion, we have vacancies for Regional Sales Managers within our expanding sales team, based at our European headquarters in Ipswich. With new product launches coming on stream throughout 2014, this is an exciting time to be joining the Ransomes Jacobsen organisation.

More information about our company can be found at [www.ransomesjacobsen.com](http://www.ransomesjacobsen.com).

## FAIRWAYS

PROFESSIONAL GROUNDCARE

## Commercial Sales Manager

Fairways GM Ltd, a well established business in the grounds care equipment industry throughout Scotland, is expanding its commercial sales operation.

The position we are offering is an exciting and challenging role dealing with new and existing customers in all aspects of the grounds care industry. Representing top quality marketing leading products such as Ransomes, Wiedenmann, E-Z-GO, Mega and Hako, the successful candidate will be a self motivated, goal orientated performer who will work well with our established sales and service teams.

A proven track record in commercial sales is essential. Industry experience is preferred but full training will be provided.

Please apply by email enclosing your CV to  
The General Manager: [ray@fairwaysgm.com](mailto:ray@fairwaysgm.com)

Applications close: 13/01/2014

# Advertise your recruitment here

## ... and online for one month

at [www.bigga.org.uk/  
careers](http://www.bigga.org.uk/careers)

from £575+vat for an  
1/8 advert

Contact **Jill Rodham**  
on 01347 833 812



# The Back Nine

A column for writers and members to air and share their views on golf greenkeeping topics

Master Greenkeeper Norbert Lischka explores golfing etiquette by writing an open letter to the world's golfers

Dear golfer,

Greenkeepers live up to their name and used to be called Keepers of the Green. They want you to enjoy golf and the course. The Course Superintendent has to have a huge amount of technical knowledge, but when they start work at daybreak to prepare the course they have simpler jobs to do. First they remove dew from the greens, then mow and relocate the holes, at times they will have to spike and topdress for the long-term health, performance, and presentation of the course.

But – look at all the things that can interfere from that moment on. Pitch marks which are inadequately (or not at all) repaired, badly raked bunkers, divots not replaced, damage to the hole by careless replacement of the flag, balls lying around on pitch or putting greens, cigarette ends, the list goes on! Etiquette as in The Rules of Golf is important and is your responsibility, not the greenkeeper's. Having to repair the damage done by careless or thoughtless golfers wastes the time of highly qualified green staff, and means they have less time for the more important work of course maintenance. This etiquette is for your benefit, as there is nothing more annoying than finding a ball sitting in a badly raked bunker or having to repair someone else's pitchmarks before you can putt.

Most important is the green and its surrounding. You want a hole with an undamaged edge, because the ball could lip out otherwise. The hole remains undamaged without any difficulty if the ball is fetched out of the cup by hand – and not by using the club head! The flagstick should be handled carefully when removing it, and replaced with caution. You should repair your own pitch mark before putting, and in an ideal world should repair other marks spotted at the same time! Pitch marks should be repaired by drawing or pushing back the turf, not by lifting or digging. A good instruction can be found at [www.PitchPin.de](http://www.PitchPin.de)

High roughs are supposed to please the eye, affect the strategy of the course and benefit the environment. I feel it's best not to take trolleys or electric carts through the rough. The turf needs to be treated with care in all situations. Thus, it is a good habit to keep a minimum distance: 3m to the edge of greens and 2m to the edge of bunkers, and trolleys should definitely not be pulled between bunkers and greens. To avoid compactions on the putting greens it should be a general rule not to practice for more than five minutes on the same spot. The following players will be grateful for it!

Cigarette ends should be put in the ashtrays on trolleys, not dropped on fairways, bunkers, or greens. Range balls should be collected from all



## about the author

Norbert Lischka MG has been Course Manager at Hamburg-Falkenstein Golf Club in Germany since 1994. After studying agriculture he travelled the world before landing his first greenkeeping job at Unna Frondenberg Golf Club. He has been a member of BIGGA since 1995 and is a member of the German Group of Sustainable Greenkeepers.

playing surfaces in the baskets provided. After a tee shot tees should be picked up. Tees should be wooden not plastic as they are more environmentally friendly and are less likely to damage mower blades.

When it comes to divots they must not be put back on tees. However, on the fairway divots are grateful for particular attention – taken back to their original place and treaded down carefully. On the range, care should be taken to ensure some turf remains between two divots in order to allow the seed to germinate faster.

To ensure a carefully raked bunker, the rake should be held with both hands and the sand carefully distributed. The edge of the bunker should be free of sand, leaving none on the grass to ensure the bunker does not lose its definition. By the way: the least bold border is the best one to enter or leave the bunker.

If the flagstick is not visible on the green, it could mean that a greenkeeper is currently working there. It is good etiquette for you to warn the greenkeepers you are playing the hole by calling "Fore" and waiting for the greenkeeper's hand signal before you start playing. A "Thank you" is always acceptable.

This is all for your benefit! More understanding from golfers will help greenkeepers immeasurably.

Yours faithfully, Norbert Lischka MG

The views expressed within this column are not necessarily those of Greenkeeper International

# BARONESS

Quality on Demand

**M**ore than 100 years of experience goes into the making of Baroness products, giving unrivalled cutting quality and the very lowest running costs.

For more than 20 years Baroness has been building the LM315 with our very own "hybrid" drive system which minimises the amount of hydraulic lines by using cable drive to the cutting units.

Now available with a 21hp 3-cylinder diesel engine and offering industry leading light weight combined with outstanding traction, the Baroness LM315 is now available to view on your golf course.

Many UK Golf Clubs are already benefitting from the matchless Baroness quality of cut from all our other models in the Baroness golf course reel-mower range.

Baroness also produces the GM2800, a semi-rough 5-unit rotary mower which is class-leading in cutting quality and traction ability.

## NEW for 2014!

Introducing the Baroness LM2400, a truly light-weight fairway mower that doesn't disappoint on cutting quality or performance!

Baroness.....truly quality on demand!



Kyoeisha UK Ltd. a subsidiary of  
Kyoeisha Co. Ltd. of Japan



Tel: 01256 461591



LM315 Greensmower



LM2700 Fairway mower



GM2800 semi-rough mower



LM2400 Fairway mower

[www.baronessuk.com](http://www.baronessuk.com)



# Global Turf UK



YOUR TRUSTED SOURCE FOR TURF EQUIPMENT THROUGHOUT THE UK



**BTME**  
SEE US ON  
**STAND C42**

Global Turf the World's largest supplier of quality pre-owned turf equipment has now located its european headquarters in the UK.

It's never been easier to purchase late-model, CE Certified turf equipment that can save you thousands.



[www.globalturfequipment.co.uk](http://www.globalturfequipment.co.uk)

Sandbeck Lane, Wetherby,  
West Yorkshire LS22 7TW. United Kingdom

Telephone: +44 (0)1937 581111

Email: [info@globalturfequipment.co.uk](mailto:info@globalturfequipment.co.uk)

Quality Assured – Inspection and service for added value and peace of mind