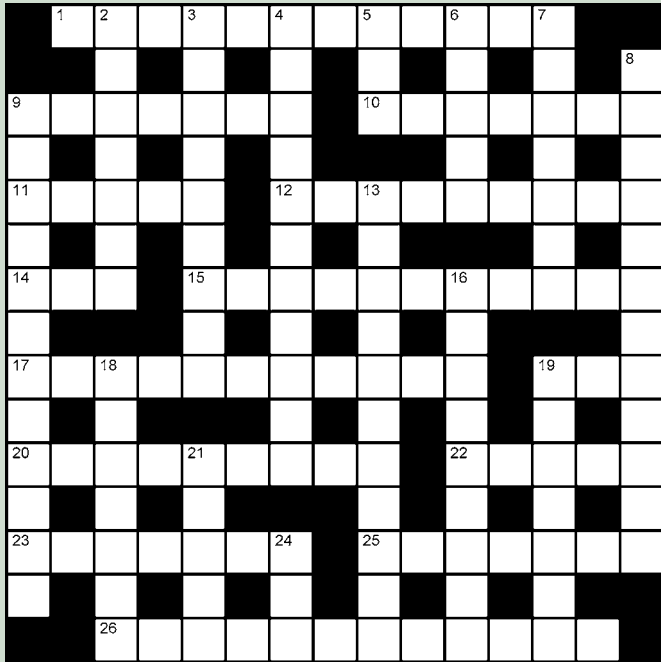




In the Shed

Greenkeeper International brings you 'In the Shed', a puzzle page to keep you entertained when the weather forces you in or for when times are slow.

CROSSWORD



Across

- 1 Peckish? Not us! (anagram) (4,8)
- 9 Young lad's early life (7)
- 10 Japanese art popularised in the UK by Robert Harbin (7)
- 11 George —, stalwart of The Comedians who died in 2003 (5)
- 12 Physical training establishment, name derived from Greek word meaning "naked" (9)
- 14 7th letter of the Greek alphabet (3)
- 15 Adorned with a particular facial growth (11)
- 17 Measurer of distance (5,6)
- 19 Prominent, usually rocky hill (3)
- 20 Cartoon character used as corporate mascot by Warner Brothers (4,5)
- 22 Reject, turn down (5)
- 23 Side sheltered from wind (7)
- 25 To copy (7)
- 26 Central European region whose name means "beyond the forest" (12)

Down

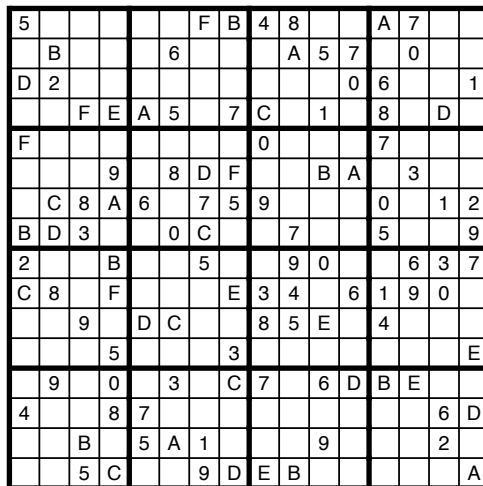
- 2 Exhibition centre in West Kensington, London (7)
- 3 Radio or television show (9)
- 4 Stomach pain (11)
- 5 Sound made by pigeon (3)
- 6 Genus of heath plants (5)
- 7 Surname of singer who sang "Walkin' Back to Happiness" (7)
- 8 US comic actor, 1893-1980, who appeared briefly in "It's a Mad, Mad, Mad, Mad World" (5,7)
- 9 Best friend of Fred Flintstone (6,6)
- 13 1930s musical filmed in 1940 as The Lambeth Walk (2,3,2,4)
- 16 Japanese city, home of Mazda car company (9)
- 18 To leave unattended (7)
- 19 Destructive wave, typically caused by earthquake (7)
- 21 Form of address in parts of Africa (5)
- 24 Computer operating system (3)

QUICK NINE-HOLE QUIZ

1. Who played Jane opposite Johnny Weissmuller's Tarzan in 1932?
2. Who created Wikipedia on the World Wide Web?
3. Which three letters did SOS replace as a Morse mayday signal?
4. What was the breed of US detective Columbo's dog?
5. Thomas Hardy's heart is buried in his native Dorset, but where in London is his body buried?
6. What numeric term describes perfect eyesight and a form of cricket?
7. What does the word 'pop' refer to in Pop Goes The Weasel?
8. In heraldry, what colour is gules?
9. How many lions are depicted on the royal standard?

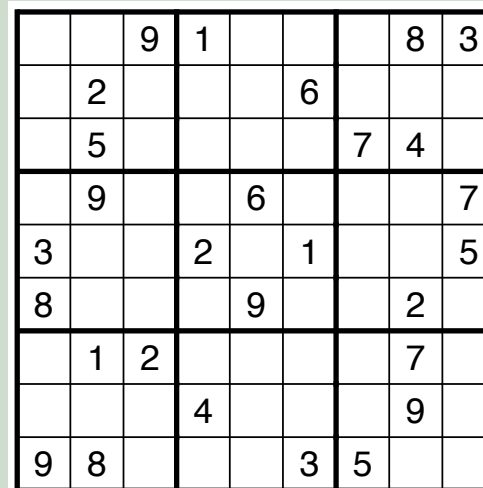
MONSTER SUDOKU

Fill in the grid so that every row, every column and every 4x4 box contains the numbers 1 to 9 and the letters A,B and C.



SUDOKU

Fill in the grid so that every row, every column and every 9 box shape contains the numbers 1 to 9.



IN THE SHED ANSWERS
can be found on page 51



IN THE SHED

Letters



LIFE MEMBER

Dear **BIGGA**,

It is with great sadness that I write to inform **BIGGA** staff and members of the passing of Richard 'Dick' Dugan at the beginning of April.

Following a long term illness Dick passed away on Saturday, April 4. A well respected and fully committed greenkeeper and member of **BIGGA** he will be particularly missed by all at Glencorse Golf Club. Dick remained active at Glencorse for many years after his retirement, combining his Course Ranger duties with helping myself and the greenkeeping staff on the course. He will be remembered most for his larger than life personality and his enthusiasm for all that he did. I'm sure I speak for all that knew him in saying that he will be greatly missed and our thoughts are with his wife Helen and his family.

Kind regards
 Ian Bell
 Head Greenkeeper
 Glencorse Golf Club

Please email your letters to Scott MacCallum, scott@bigga.co.uk or Melissa Jones, melissa@bigga.co.uk

SITESAFE

For Golf...
 Garage - Workshop - Storage
 Housing - Welfare Units - Pavilion - Toilets
 Modular or Self-contained



Half Way House



Staff Welfare



Irrigation Pump Housing



Groundsman's Building



Club House

For further information or to discuss your requirements please contact:
 IRVINE WESTON on Tel: 01427 752058 / Fax: 01427 754337 or

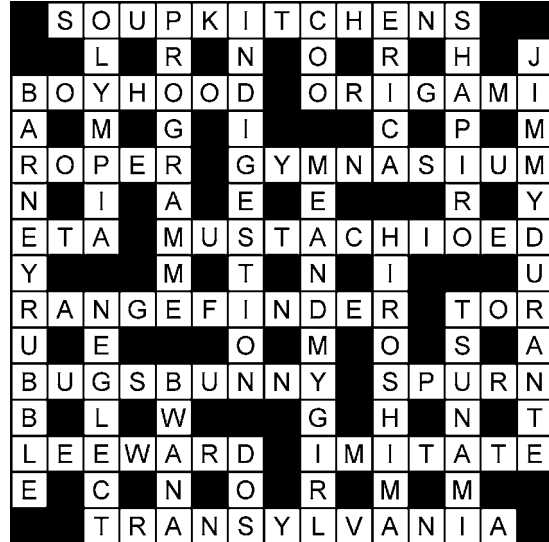
Cleveland Sitesafe Ltd. Riverside Works, Dockside Road, Middlesbrough,
 TS3 8AT. Tel: 01642 244663 / Fax: 01642 244664
 Email: sales@cleveland-sitesafe.ltd.uk Website: www.cleveland-sitesafe.ltd.uk



In the Shed

ANSWERS

CROSSWORD



QUIZ ANSWERS

- | | |
|--|---|
| <p>1. Maureen O'Sullivan in Tarzan The Ape Man</p> <p>2. Jimmy Wales</p> <p>3. CQD - CQ was a general call to all ships and D signalled Distress</p> | <p>4. Basset hound</p> <p>5. Poet's Corner</p> <p>6. 20/20</p> <p>7. To pawn (weasel was a shoemakers tool)</p> <p>8. Red</p> <p>9. Seven (one represents Scotland)</p> |
|--|---|

MONSTER SUDOKU

5				F	B	4	8		A	7				
	B			6				A	5	7	0			
D	2								0	6			1	
		F	E	A	5	7	C	1		8	D			
F								0			7			
		9		8	D	F			B	A		3		
	C	8	A	6		7	5	9			0		1	2
B	D	3			0	C			7			5		9
2		B			5			9	0			6	3	7
C	8	F				E	3	4	6	1	9	0		
		9		D	C		8	5	E		4			
		5					3							E
	9	0		3	C	7		6	D	B	E			
4			8	7								6	D	
		B		5	A	1			9				2	
	5	C			9	D	E	B						A

SQUIGGLY SUDOKU

6	4	9	1	7	5	2	8	3						
7	2	3	8	4	6	1	5	9						
1	5	8	9	3	2	7	4	6						
2	9	1	5	6	4	8	3	7						
3	7	4	2	8	1	9	6	5						
8	6	5	3	9	7	4	2	1						
4	1	2	6	5	9	3	7	8						
5	3	7	4	1	8	6	9	2						
9	8	6	7	2	3	5	1	4						