

New Products



NEW PRODUCTS



NEW COMPACT TRACTOR

Massey Ferguson has revised its 1500 Series compact tractor range with the introduction of the MF 1529M, a 28hp three-cylinder model with an eight forward, eight reverse Synchro-Shuttle transmission giving forward speeds from 2.3 - 27km/h.

Replacing the MF 1528 in the 1500 Series line-up, the new model joins the 32hp MF 1532M launched by the company at Harrogate Week 2008.

i www.masseyferguson.com

INNOVATIVE NEW MARKING SYSTEM

With the introduction of the EasyMark System, Standard Golf Company brings ease and flexibility to placing a flagstick virtually anywhere on a golf course.

The system includes a Tap-In Flagstick Anchor and a 3" spotter ring which allows flagsticks to be placed virtually anywhere in a matter of seconds. The EasyMark System is especially useful for driving ranges and temporary greens, where flagsticks may be changed often in a variety of circumstances.

i 1-866-743-9773
www.standardgolf.com



FUEL TANK SYSTEM OVERCOMES SAFETY FEARS

Storing or moving petrol or diesel, for small vehicles, or uses like generators or mowers is not always easy. Filling cans and carrying them in cars or vans is not a safe procedure and can invalidate insurance cover. The new Tuffa Petrol Buggy 200 litre steel bunded and fireproofed tank meets this problem. Transportable and easy to handle, the new tank is UN approved and can fit on to a pickup or other truck for site or other movements.

i 08707 567700
www.tuffa.co.uk

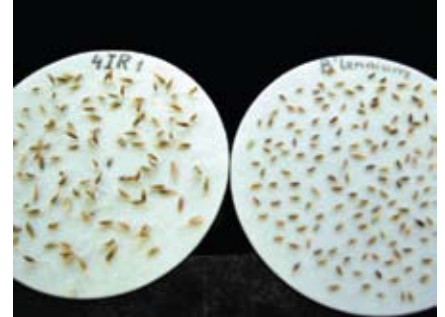


ORGANIC NUTRITIONAL ALGINATE RANGE

Sherriff Amenity have launched SeaVolution, a new organic nutritional algininate range, produced from the seaweed *Ascophyllum nodosum*, which is sourced from the unpolluted bays along the North West coast of Ireland.

There are four products in the Sea Volution range: SeaVolution Golf; SeaVolution Golf Plus; SeaVolution Sport and SeaVolution Sport Plus.

i 01638 721888
www.sherriffamenity.com



SAVING YOUR SURFACES

Brand new from Barenbrug is BAR 50 SOS, a unique ryegrass blend that's ideal for groundsmen and greenkeepers seeking a rapid solution to their turf repair needs.

i 01359 272000
www.barenbrug.co.uk



EFFICIENT YET SAFE ON YOUNG TURF

Cabadex, Headland's new selective herbicide, brings effective control of difficult weeds to both established and young turf.

Combined leaf and root uptake of the active ingredients Florasulam and Fluroxypyr, means that the product can be efficient and safe even on turf at, or after the second leaf stage, approximately eight weeks after sowing.

i 01223 597834
www.headlandamenity.com

NEW BOOKLET HELPS IRRIGATORS

The Environment Agency has published a guide for farmers, golf course managers and others who are considering building a storage reservoir for irrigation.

Careful planning when building a reservoir can reduce costs and maximise benefits.

The booklet provides a guide through the various stages from planning, design, construction through to commissioning. It includes case studies, information on costs and funding and incorporating environmental enhancements. This booklet can help make the process easier.

i 08708 506506
www.environment-agency.gov.uk



TRACK LOADER

New from Terex is the PT-30. The most compact Rubber Track Loader in the Terex range it gives a single person the productivity of an entire crew of hand labour. It has the manoeuvrability to work in confined or difficult-to-reach areas and very low ground pressure so it works over sensitive areas with minimal impact.

i www.terex.com



NEW LOOK MODELS

All new automotive styling and EPS (Electronic Power Steering) are among the changes Kawasaki has made to its new Mule 4010 Diesel 4x4 and four-seater Mule 4010 Trans 4x4 Diesel utility vehicles for the coming year. Retaining the proven liquid-cooled 953cc three-cylinder diesel engine and continuously variable transmission (CVT) of the existing Mule 3010 series, the new Mule 4010 offers enhanced operator comfort and increased on-board stowage space.

i www.kawasaki.co.uk

NEW TRACTORS FROM KUBOTA

Kubota has introduced the new M40 Series of next generation tractors – spanning 60 to 95hp – which succeeds the ME Series.

Re-engineered, restyled and powered by Kubota's Tier III compliant, low emission direct injection diesel engines, the lightweight, short-wheelbase M40 tractors will appeal to groundscape professionals and offer a choice of four Horsepower variants (60, 70, 85 & 95) with factory fitted cabs.

The tractors combine high power to weight ratio, a range of new features and class leading manoeuvrability. The simplicity of the M40 Series further enhances its appeal with Kubota successfully incorporating new innovations without compromising on ease of use.

All models feature Kubota's latest Tier III compliant, 4 cylinder E-CDIS (centre direct injection system) engines, with the two larger models – M8540 and M9540 – being turbo charged. Excellent fuel economy, and minimised noise and vibration levels, is matched with a 110 Litre capacity fuel tank many hours of work without refuelling.

The M40 Series is equipped with a Hydraulic Shuttle for smooth, progressive take up of the drive, and responsive, clutchless directional changes, ideal for front loader work in particular. With a 36F/36R speed range incorporating Dual Speed* – a half gear splitter also featured on the Kubota's larger M108S 108hp machine – changes on the move are quick and simple. They have a maximum speed of 40kph and Creep Speed is standard on all models.

i 0800 023 1111
www.kubota.co.uk



PNEUMATIC SEED DRILL

Rolawn has developed what it believes to be the most advanced pneumatic seed drill in the UK.

Designed and built in house by our experienced fabrication team, it drills at 9 metres wide and has three 3 metre independent seed drill units and a hopper that holds nearly 2 tonnes of seed enabling it to drill up to 100 acres per day.

i www.rolawn.co.uk or: www.topsoil.co.uk

