

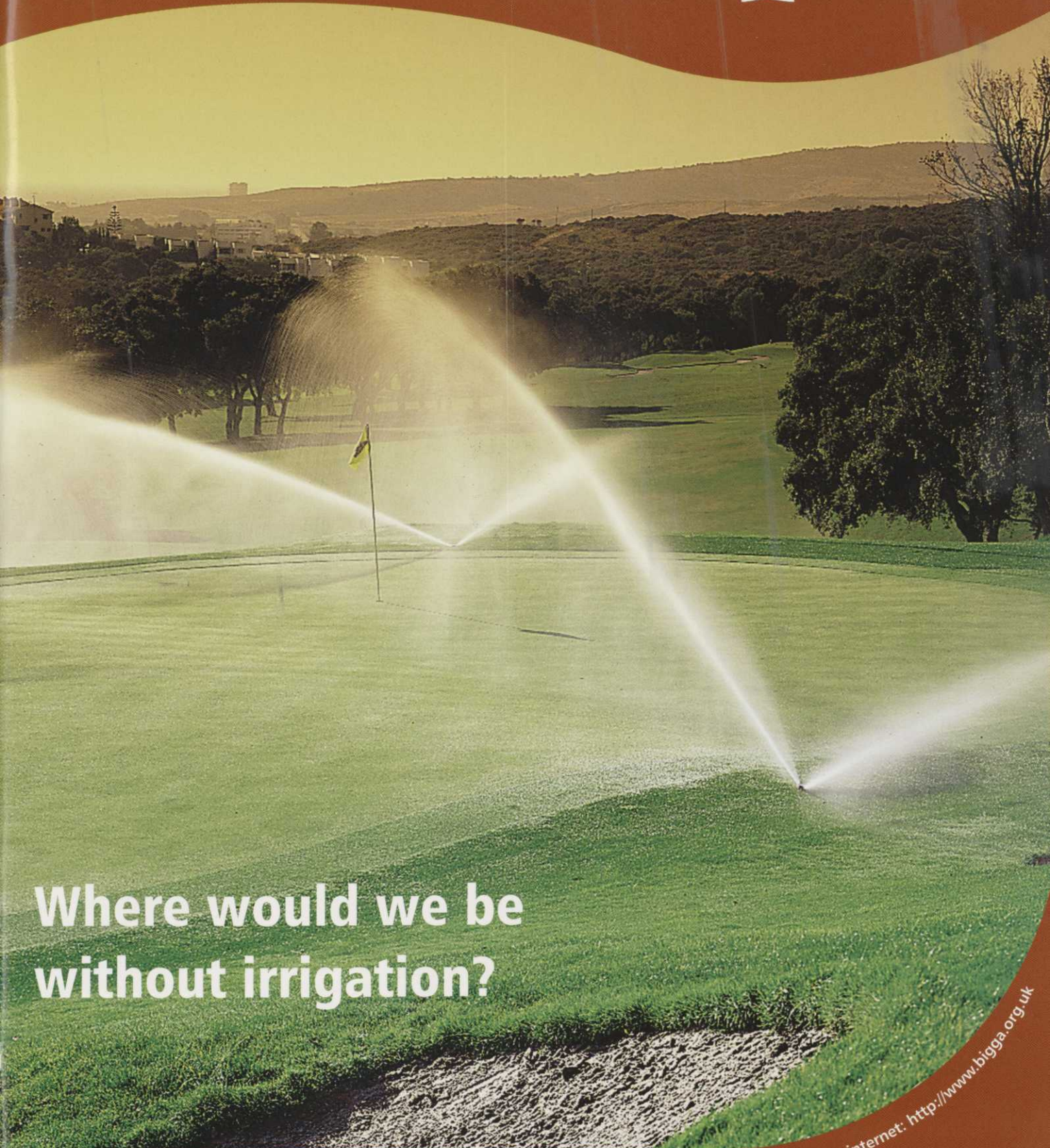
Award-winning magazine of the British and International Golf Greenkeepers Association



September 2003 – £3.50

Greenkeeper

INTERNATIONAL



**Where would we be
without irrigation?**

Hanbury Manor | Irrigation | Communication | Disease | Integrated Pest Management

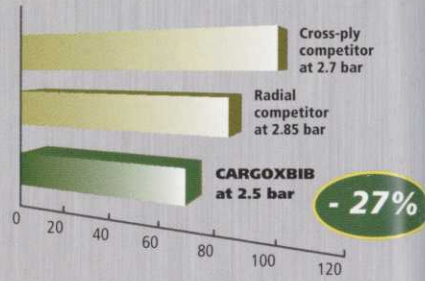
See us on the internet: <http://www.bigga.org.uk>



A low pressure radial tyre designed to protect the turf

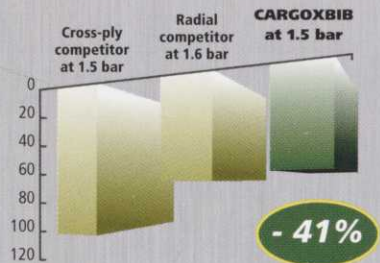
Facilitates traction

Tractive effort index



Excellent soil protection

Rut depth index



Maximising profitability with Michelin

With Michelin, you are investing in proven high performance technology. Reduce cost by minimising turf damage and maximising efficiency.



MICHELIN

Your golf course deserves Michelin

www.michelin.co.uk/agri

For more information on the CARGOXBIB, or any other tyre in our comprehensive agricultural range, call 0044 (0) 1782 401789

Size: 600/55 R 26.5 (600/55 - 26.5 for the competition - Conditions: 4360 kg at 30 km/h)
 Size: 600/55 R 26.5 (600/55 - 26.5 for the competition - Conditions: 6500 kg at 8 km/h)
 Source: Michelin Test and Research Centre (Ladoux)



A guide to who's who at BIGGA

President
Sir Michael
Bonallack, OBE

BIGGA Board of Management
Chairman - George Brown
Vice Chairman - Andrew Campbell
Past Chairman - Richard Barker

Board Members
Ian Semple
Paul Jenkins
David Walden
Iain Macleod
Bert Cross

Executive Director: Neil Thomas
Email: neil@bigga.co.uk

Deputy Executive Director: John Pemberton
Email: john@bigga.co.uk

Communications Manager/Editor: Scott MacCallum
Email: scott@bigga.co.uk

Sales Manager: Rosie Hancher
Email: rosie@bigga.co.uk

Education & Training Manager: Ken Richardson
Email: ken@bigga.co.uk

Membership Services Officer: Rachael Palmer
Email: rachael_p@bigga.co.uk

Contact us

You can contact The British and International Golf Greenkeepers Association in any number of ways:

Post: BIGGA HOUSE, Aldwark,
Alne, York, YO61 1UF

Email: reception@bigga.co.uk

Internet: www.bigga.org.uk

Tel: 01347 833800

Fax: 01347 833801



INVESTOR IN PEOPLE

Greenkeeper

INTERNATIONAL

The official monthly magazine
of the British & International
Golf Greenkeepers Association

Editorial

Communications Manager/Editor: Scott MacCallum
Tel: 01347 833800 Fax: 01347 833801
Email: scott@bigga.co.uk

Advertising

Sales Manager: Rosie Hancher
Tel: 01347 833800 Fax: 01347 833802
Email: rosie@bigga.co.uk

Advertising Sales Executive: Cheryl Broomhead
Tel: 01347 833800 Fax: 01347 833802
Email: cheryl@bigga.co.uk
Email: sales@bigga.co.uk

Design

Design and Production Editor: Marie Whyld
Tel: 01347 833800 Fax: 01347 833802
ISDN: 01347 830020
Email: marie@bigga.co.uk

Printing

Warners Midlands Plc, The Maltings,
Manor Lane, Bourne, Lincolnshire PE10 9PH
Tel: 01778 391000 Fax: 01778 394269

The advertising copy deadline
for inclusion in the October 2003
edition of Greenkeeper International
is Friday 12 September 2003

Greenkeeper International:

Contents may not be reprinted or otherwise reproduced
without written permission. Return postage must accompany
all materials submitted if return is requested.
No responsibility can be assumed for unsolicited materials.
The right is reserved to edit submissions before publication.

Although every care will be taken, no responsibility is
accepted for loss of manuscripts, photographs or artwork.

Opinions expressed are not necessarily those of the
Association, and no responsibility is accepted for such
content, advertising or product information that may appear.

Circulation is by subscription. Subscription rate: UK £42 per
year. Europe and Eire £55. The magazine is also distributed to
BIGGA members, golf clubs, local authorities, the turf
industry, libraries and central government.

ISSN: 0961-6977

© 2002 British and International Golf Greenkeepers Association

Advertisers' Index

ADVERTISER	TELEPHONE	PAGE
ADVANTA SEEDS	0113 2037627	28
BAYER ENVIRONMENTAL	01992 784260	14, 26
BERNHARD & CO LTD	01788 811600	30, WRAP AROUND
CAMPEY TURFCARE LTD	01260 224568	44
CRANFIELD UNIVERSITY	01525 863319	6
GREENSWARD	0113 2676000	55
HEADLAND AMENITY	01223 597834	35
IRRIGATION CONTROL	01606 558927	21
IRRITECH	01823 690216	21
JAVELIN WATER ENGINEERING	01507 607175	21
JOHN DEERE	01949 860491	42
KAWASAKI	01628 856600	6
L S SYSTEMS	01772 815080	21
MCCORMICK TRACTORS	01302 366631	36
MICHELIN TYRE PLC	01782 401789	2
OCMIS	0870 6005131	20
OSPREY IRRIGATION	01939 236677	21
RENAULT	01608 662727	6
ROLAWN	01904 608661	13
RUFFORD SOIL TECHNOLOGY	01477 572462	39
SCOTTS	01473 830492	32
SEOUL NASSAU	0121 3259200	22
TEBBUTT ASSOCIATES	01253 342003	INSERT
TOP IRRIGATION	0208 9051892	21
TORO COMMERCIAL PRODUCTS	01202 319987	INSERT, 20
WASTE2WATER	01782 373878	24
WATERMATION 2000 LTD	01342 811552	22



12 Course Feature - Hanbury Manor



33 Diseases affecting golf courses

WIN

A SONY MINI DISC PLAYER!

Music while you work! The Sony, portable mini disc player not only plays but also records - up to 4 CD's can be recorded on one mini disc. We are even giving away 10 free discs to get you started. Stereo headphones are included along with an AC power adapter and optical cable for digital recordings.

See page 48

September 2003

Your next issue of Greenkeeper International will be with you by 8 October 2003

REGULARS

News

Pages 4, 5 & 7

9 Education

Ken Richardson gives information on regional training courses plus some advice on stress management.

11 Membership

16 **Continue to Learn - Making Your Case**
Keith Jaynes looks at how effective presentation skills can help greenkeepers get the new course equipment they need.



18 Talking Heads - Irrigation

Six top Course Managers talk about their course's irrigation.

31&37 Letters

38 Managing a Golf Course - Communication

Duncan McGilvray concludes his five part series detailing duties of the modern day Course Manager.

40 New Products

43-47 Around the Green

54 Features Listing

Helping you track down some of Greenkeeper International's past articles.

54 As I see it ...

BIGGA National Chairman, George Brown, entertained the legends of the game in the British Seniors' Championship and is delighted that Turnberry was in good condition for the occasion.

FEATURES

8 Greenkeepers Can Join Jet Set

Do you want to be a part of the Bernhard's Scholarship Delegation to San Diego next year?

12 To the Manor Born

Scott MacCallum visits Marriott Hanbury Manor where Kneale Diamond has a number of duties.

23 A Treat in Store!

BIGGA National Championship, sponsored by Seoul Nassau promises to be a great event.

24 Arizona, Here We Come!

After reaching the final last year but failing to make the final step Whickham Golf Club will be representing the UK in the John Deere Team Championship.

27 The SMART way to Manage Disease

Ruth Mann provides some interesting advice on managing disease.

33 Problems Old and Problems New

Kate Entwistle casts her eye over the diseases which are currently affecting golf courses.

Cover photograph:

A Toro irrigation system gets to work on watering the greens.



Welcome

IT'S AMAZING HOW TIME FLIES

A few months ago, during a rare moment of office time given over to reflection, I worked out that the September 2003 magazine would be the 100th I'd edited since joining the Association in April '95.

Now here it is, the 100th magazine under my editorship and in a quiet way I take some pride in having achieved my own personal century.

What it also did was make me think back to those days when I began working for BIGGA and the changes that we have seen since then.

My first magazine, June '95, featured Walter Woods who was preparing for his final Open Championship; there was an article from John Hacker, on "How a Green Committee Should be Run", and a piece on "10 Further Pitfalls of Golf Course Maintenance" from Robert Brame, of the USGA Green Section.

News included a report on a special meeting a golf club was holding "to discuss the performance of its greenkeeping staff"

A look at the Section Notes revealed the names of many members who are still working hard on behalf of the Association now. This highlights just how much a debt is due to them and how much we need new blood to come in. The more people involved the less of an imposition on individuals and the more people will enjoy their work on Association business at Section, Region or National level.

Another point which was brought home when looking at the June '95 magazine was that it was predominately black and white and that, together with the fact that Ken Richardson still looked like a relatively young man in his photograph, adds to the feeling that the June '95 magazine is now a little piece of history.

I recall one of my early trips was to Royal Porthcawl where a Support Team was assisting David Ward with the Walker Cup. Tiger Woods was still an amateur then and, unable to keep his ball on the golf course, was beaten in the singles by Gary Wolstenholme. Since then he has become the biggest thing in sport, never mind golf.

Some of the companies which were advertising in '95 are no longer, either because of a change of marketing strategy, merger or ceasing trading altogether. Ransomes and Jacobsen were still arch rivals then, as were Scotts and Levington and Miracle Professional and again, this highlights how what would be considered unthinkable changes at the time become facts of life a short time later.

Among the highlights for me over the 100 magazines have been the eight Harrogate's I've attended each one building on the one before; the Hayter Challenges and Hayter International Cups which were superb events and the opening of BIGGA HOUSE by HRH The Duke of York.

Hopefully over the next 100 issues there will be many more highlights to cover and looking back in eight and a half years time will be equally fun.

Scott MacCallum, Editor

FUND RAISERS

Dale Robertson, Course Manager at Newmachar Golf Club, and two of his staff completed a 10 kilometre run in Aberdeen and raised £463.50 for the Archie Foundation in aid of a new children's hospital in Aberdeen.

Dale is on the left of the picture with Patrick Wood, Deputy Head Greenkeeper, in the middle and apprentice Ben Brookes on the right.



SPORTSTURF IRELAND

All roads lead to Dublin on November 12 and 13 when Sportsturf Ireland, the largest turfgrass exhibition in Ireland is staged at the RDS venue close to the city centre. The show has recently been expanded to cover the legendary main hall of the Royal Dublin Society plus the adjacent modern Shelbourne Hall.

Sportsturf Ireland is a two-day trade show run on alternate years and is organised by the GCSAI. It covers every aspect of turf grass management from golf courses, sportsgrounds and racecourses to public parks, cemeteries and amenity areas. The show will attract turfgrass managers, golf course and parks superintendents and visitors from all over Ireland and much further afield.

As this is a unique opportunity to meet those involved in the Irish industry 'under one roof', over 90% of the exhibition space has already been allocated with most major machinery and supply companies taking part. With the show having a two-year cycle a large attendance is expected driven by the curiosity factor to see what's new in the market. It also acts as a social occasion as it is a great opportunity to meet and greet old friends from different parts of the country. Admission to the trade fair is free.

For further details about Sportsturf Ireland, the availability of exhibition space, or for a personal invitation, contact Tracy Coburn, the GCSAI's Marketing Manager, on 028 406 22655, mobile 07803 237247 or email tracy@gcsai.org

MAKE THE MOST OF OLD MACHINERY



Clubs looking to maximise the use of their older machinery might like to take note of the work of Norbert Lischka and his team at Falkenstein Golf Club in Germany, who converted an old Toro 3000 into a leaf blower.

"Because of the number of trees we have here and the fact that it is a very hilly course the team came up with the idea of building a leaf blower on a 15 year old Toro 3000 green machine," explained Norbert.

"We were able to use the old pedals for mowing and lifting. Therefore we bring the blower in the right distance to the surface by

going up and down, when the area is undulated. Now we don't have to walk any more and are much more effective in our use of time.

Norbert estimates that the cost to fit the blower onto the green machine was 2000 Euros (around £1,400).



ATV SAFETY WEAR

ATV operators should always wear the correct protective equipment and this includes a helmet. In the event of an accident, the most common injury sustained by an ATV user has been found to be a head injury and helmets are therefore a 'must' and not an option!

ATV manufacturers have worked closely with the HSE on the whole area of safety on quad bikes. As a result these machines are exempted from the requirement to fit a ROPS frame and seat belt because research has demonstrated that these

vehicles are safer without them. However, good operator training is essential. This will include awareness of correct tyre pressure, speed control, body active weight distribution and correct personal protective equipment.

In a work situation an employer must provide, and the operator must wear a helmet. Failure to do so can lead to formal action by the HSE.

Email press releases and new product updates to; scott@bigga.co.uk

GOLF COURSE COMMITTEE PLEA

Given the potential for serious disease damage in situations where fungicides are banned, reference the story from Sweden and the Netherlands in last month's issue, the R&A would like to hear from anyone who has managed this problem without recourse to fungicides over the last 3 years.

Please contact Steve Isaac, Secretary to the Golf Course Committee at The Royal and Ancient Golf Club of St Andrews, Fife, KY16 9JD or e-mail: steveisaac@randagc.org



STRONG BACKING

Work by the GTC to develop standard learning materials based on best practice and principles for golf course maintenance has been strongly backed by the industry's training providers.

Meeting at the GTC headquarters at Aldwark Manor Hotel and Country Club last week, over 50 delegates, representing most of the 28 accredited training providers in the UK and Ireland, were unanimous in supporting the move. They looked forward to receiving the new standard learning materials for the Sports Turf (Greenkeeping) National Occupational Standards – NVQs and SVQs Levels 2 and 3.

The Qualifications and Curriculum Authority, City and Guilds and the Learning and Skills Council have also voiced their support for the GTC initiative, which is intended to ensure employers have greater confidence that their greenkeeping staff are learning what they really need to know.

As part of the changes, the GTC is raising awareness of A1, the new assessor qualification, and will be offering its network of training provider centres the opportunity to achieve the new award. In turn, this will raise awareness of how Course Managers or Head Greenkeepers can act as assessors in the workplace.

"Standardised training materials written by experts in the subject add extra credibility to the very good range of courses being run up and down

the country. Students and their employers will both know exactly what knowledge level is required for the NVQs Levels 2 and 3," said Keith Harrison, Lecturer in turf agronomy at Merrist Wood College in Surrey, who attended the meeting.

"Taking steps to ensure that students get better assessment of how well they are doing in the workplace from their own supervisor is also very welcome. How students put the knowledge they have gained into practice, and how well they fit into the working environment, can only really be tested on the ground by the people who know them best," he added.

David Golding, GTC Education Director, explained "The skills which trainee greenkeepers learn are vital to the long-term success of the industry. We are constantly looking at ways of strengthening the partnership between the industry and its training providers, as we know that ultimately the success of individual businesses depends on the skills of their staff. We are delighted the training providers share our view that everyone will benefit from this new initiative.

"Employers are equally enthusiastic because the consistent standard of the new learning materials will ensure that they have the opportunity to become more involved in deciding how their own staff can benefit from the training on offer, and where and in what form it should be provided."

The picture on page 27 of the August issue covering The Open Championship shows Ben Scrivener on the extreme right, not Alan Magee as we stated in the caption. Apologies to both Ben and Alan.

The picture on page 17 on the August issue shows a famous view on the Hotchkin Course not the Bracken as was stated in the caption.

A GEM OF A DAY

The Harry Diamond Memorial Quaich was played over Belleisle Golf Course on Sunday, July 13. The 13th may be an unlucky number for some but not for the day of Harry's Quaich. The sun was shining, the golfers (142 of them) turned out to enjoy the day. All Harry's family were there. It was, if possible, for golfers, a perfect day.

It took the usual format, Stableford Foursomes and a shotgun start and the job of the event is that it is very much a family affair with ages ranging from 14 to 76.

After the match and before the presentation there was, as usual, a free drink, and many other little extras that Harry's family could think up.

This year 10 greenkeepers took part in the competition and I am more than pleased to tell you that Derek Wilson, Head Greenkeeper of Irvine Bogside, was one of the four winners. There is now a greenkeeper's name on the Quaich, which I am sure would have pleased Harry no end.

Harry's immediate family, the three girls, two brothers and his wife, Jessie, presented the prizes while the Secretary, "Brownie" (as the locals call him), read out the winners.

The course was in very good condition and one could see the extra effort that the Head Greenkeeper and his staff had put in for this special day. It is always a pleasure to be present at this day to the memory of Harry Diamond.

The family send their grateful thanks to all who assisted in bringing the tournament to a happy and successful end for this year and, as we say in Scotland, "Haste ye back next year".

Cecil George

Royal Inverdivot GC...

Strip Cartoonist of the Year www.tonyhusband.co.uk



MYERSCOUGH COLLEGE

From this month, Myerscough College will be the first college in the UK to offer an exciting new on-line Foundation Degree in Sportsturf.

The distance study options involve interactive internet-based teaching and learning materials making qualifications in Sportsturf accessible to all with internet access, regardless of location or nationality. This more flexible method of study will also be a major breakthrough in overcoming the participation barriers currently experienced by those employed full-time in the Sportsturf industry, allowing them to gain a higher education qualification while they work.

Open Day
2 September

Cranfield
UNIVERSITY
Silsoe

Achieve Your International Goals

All over the world sports are expected to be played on first class surfaces. Our MSc Sports Surface Technology will teach you the skills needed to create and maintain outstanding surfaces, increasing your earning power and opening up worldwide career opportunities.

- Ten, two week short courses provide training in specific areas – 'Sports Surface Playability', 'Mechanisation for Sports Surfaces', 'Irrigation and Drainage'.
- Over a maximum of five years you will complete all ten plus a research project which can be carried out at your own venue.
- We can also offer a one year full time course. Apply now to start in October 2003.

Supported by the Institute of Groundsmanship, British and International Golf Greenkeepers Association and the Football Association as well as other leading professional bodies and industrial organisations.

Bursaries available

For further details please contact Sue O'Neill, Student Enquiries, Cranfield University, Silsoe, Bedford MK45 4DT.
Tel: 01525 863319 Fax: 01525 863399
Email: StudentEnquiries.silsoe@cranfield.ac.uk
www.silsoe.cranfield.ac.uk

 **Kawasaki**



mules, blowers, lawnedgers, brushcutters, hedgetrimmers and engines

working wonders



SEE US AT
SALTEX
STAND W51

For a Brochure and your nearest Dealer call **FREE** on

0800 3 163 063

(Outside the U.K. call +44 1235 824351) • www.kawasaki.co.uk

Professional products for professional users



RENAULT

Well balanced, compact yet powerful, the Renault PALES outshines all others when it comes to high output, reliability and low long term running costs.

- ◆ 52, 67 or 76hp versions ◆ Optimum weight distribution for minimal ground pressure
- ◆ 2 or 40kmh 4-wheel drive available ◆ High rear linkage lift capacity up to 3578kg
- ◆ Ideal for use with a front-end loader ◆ Extensive range of tyre options available

Tel: 01608 662727

www.renault-tractors.com

THE HARD WAY!

Steve Welch, Course Manager of Taunton Vale Golf Club, Somerset, has recently taken five days to walk around an average length of any 18 hole course. He had little sleep, endured a temperature range of -10 to +35 degrees and was psychologically shattered. Confused? Let me explain.

Steve, on agreeing to help raise funds for the Golf Club's charity day, agreed to find the most difficult way of getting around the golf course as possible. When he realised that his course's length was so similar to the height of the world's highest stand alone mountain he knew what was to be done. Tanzania's Mount Kilimanjaro just had to be climbed!

However, Steve, 46, is well known to be scared of heights! Not deterred, he set about the arduous training of carrying a 20kg ruck sack on plenty of weekend walks.

Steve contacted the Expedition Co. and quickly realised that the expertise on offer from this local company was what he needed to help him reach the summit.

So earlier this year, Steve set out for an adventure of a lifetime. A day spent climbing through lush tropical rainforest, followed by a day



of upper-highland type of scenery brought little in the way of problems.

However, on reaching the second campsite altitude sickness hit in a big way, with symptoms like the worst hangover possible. Two more days of steady climbing brought the team to their final camp.

"I have always sought to do crazy things, finishing 28th in the world 'Trail Running' Championships over 80 miles or jumping out of a plane for charity but nothing could have ever

prepared me for the scariest four hours I could have ever imagined" said Steve.

Steve's dislike of heights, coupled with climbing in total darkness, made his sense of fear work overtime.

"My heart rate went off the scale and I'm still not sure how I reached the top" said Steve.

The £600 raised by his efforts will certainly be welcomed by the local hospital, but Steve now reckons that selling raffle tickets is for him from now on!

ARE YOU LOOKING FOR A RELIABLE AGRONOMIST?

Robert Laycock, the current keeper of the Register of Independent Professional Turfgrass Agronomists (RIPTA), answers some questions about RIPTA.

What is RIPTA?

RIPTA is a register of 16 individuals who advise on turf surfaces of various types and who meet strict criteria for inclusion. These cover independence from commercial interests, scientific qualifications to at least first degree level, experience of providing independent advice on turf for a period of at least four years and adequate professional indemnity insurance cover. Individuals must gain most of their income from advisory work on turfgrass surfaces and abide by a written code of ethics.

Some of those on the Register may be employees of larger organisations, but they appear on the register in their own right.

The Register was launched in 2002 and meets annually, but members communicate in between by email and telephone. There are no staff or offices; a member of the register takes a voluntary turn as keeper or administrator to look after the register from year to year. Jeff Perris, Director of Advisory & Consultancy Services of the STRI was the first "Keeper" of the Register.

How did RIPTA come about?

Several independent agronomists became aware of an increasing number of advisors working for greenkeeping supply companies who were masquerading as independent when it was patently

clear that they were aiming at increasing the sales of products sold by them or their parent companies. They decided to establish the Register to help potential clients choose suitable advisors.

The formation of the register has received the support of the main bodies involved in sports turf, including the R & A, Golf Unions, Football Association and Jockey Club, who had also become concerned at the growing commercialisation of some suppliers of turfgrass agronomy services.

Why is RIPTA useful to golf clubs?

If a golf club is trying to identify a suitable agronomist, RIPTA provides a list of available individuals in the British Isles. The choice within the list is then up to the client and may depend on location, a particular specialism or simply whether the client gets on with the agronomist. However, whoever is selected there is a guarantee that they meet certain standards.

How does an agronomist join the register?

One aim of the register is to increase the number of suitably qualified agronomists on the register and applications for membership are welcomed. Any UK agronomist interested in joining the register may discuss this with the current Keeper of the Register or apply directly, following the guidelines on the website.

To find out more about RIPTA and view a list of its members, or to get further information and background to its formation, visit the web site at www.ripta.co.uk. Some members have links to their web sites from the RIPTA site.

NEW TORO TRAINER



Toro turf machinery distributor Lely UK has appointed Ian Sumpter as its new Toro Training Manager.

His appointment is part of a programme of wider initiatives being introduced by Toro aimed at establishing itself as the turf

machinery industry's No. 1 in customer care.

As such Ian will play an important role in ensuring that Toro dealer service engineers, and those at its customers on golf courses, sports grounds and other locations, are fully trained and proficient in all aspects of servicing Toro machines.

He will work closely with Lely's technical advisors to develop and deliver a programme of operator and service training throughout the UK, which will also include end-user personnel who operate equipment, and Lely's own staff at its St Neots, headquarters.

"This is a very exciting opportunity for me," said Ian.

"Toro has a reputation for delivering a superb standard of after sales service and training and I am looking forward to being part of that process."

He brings with him 13 years' experience of a wide range of related industries, including greenkeeping and sports and amenity turf management.

Continue to learn

2004



Presented by BIGGA
in association with
The Greenkeepers Training Committee



Following discussions between BIGGA and the Greenkeepers Training Committee (GTC), it can be announced that the January 2004 Continue to Learn Programme will be a joint BIGGA/GTC presentation.

There are several important changes to the Programme for 2004. These are:

- National Education Conference and Seminar Programme will be held in a purpose built facility in Hall D of the Harrogate International Centre (HIC).
- Continue to Learn Workshops will be held in the Moat House Hotel.
- The Conference and Workshop Registration Desk will be in the HIC Foyer (Entrance opposite the Moat House).
- All Conference registration will take place on Monday 19 January and Tuesday 20 January, in HIC, from 8.00 am.
- All Workshop registration will take place on Monday 19 January, in HIC, from 8.00 am.
- The BIGGA Education & Training Stand has moved to Stand Q8.

The BIGGA Annual General Meeting will be held in Hall D of The Harrogate International Centre on Wednesday 21 January at 5.15 pm.

**The theme of the National Education Conference is:
Golf Sport and Business**

Chaired by Roger Greenwood.

Speakers include:

Jimmy Kidd
Peter McEvoy

Professor Al Turgeon
Chris Hartwiger
Billy McMillan
Kenny Mackay
Kate Entwistle
Alex McCombie
Terry Buchan
Michael Stagnetto
Jeff Carlson

They will show how the Sport of Golf is a business, how business impacted on golf in the past, how golf impacts on business today, on golfers expectations and on how greenkeepers can cope in the future.

Three one-day workshops will cover:

Health and Safety

Jerrard Winter from Haztek International.

Water and the Golf Course

Dennis Mortram.

Real Influencing Skills

David Bancroft-Turner

The Conference and Workshops will be supported by the John Deere Team Challenge.

Seminars will follow the format of Continue to Learn 2003 and will last 30 minutes. The Hall will be cleared after each Seminar giving extra time to attend BTME & ClubHouse Exhibition.

The Exhibitions Banquet starring Bootleg ABBA will take place in the Majestic Hotel on Thursday 22 January.

On Wednesday 21 January, the Keynote Speaker, supported by Ransomes Jacobsen is Alvin Law.

The Careers Fair, supported by TORO will be held in Hall Q.

Education



Greenkeeper Education and Development Fund

BIGGA GOLDEN KEY and SILVER KEY MEMBERSHIP

Unlock the doors to progress through BIGGA's Education and Development Fund - the key to a great future for greenkeepers, golf clubs and the game of golf.

Golden and Silver Key Membership is available to both companies and individuals.

For details, please contact Ken Richardson on 01347 833800 or via ken@bigga.co.uk

Golden Key Supporters



Golden Key Company Members

Company	Tel: Head Office
Gem Professional	01254 356611
John Deere Ltd	01949 860491
Hayter Ltd	01279 723444
Massey Ferguson (AGCO Ltd)	02476 851292
PGA European Tour	01344 842881
Rigby Taylor Ltd	01204 677777
Scotts UK Professional	01473 830492
Ransomes Jacobsen Ltd	01473 270000
The Toro Company/Lely UK	01202 319987
TurfTrax Group Ltd	01722 434000

Golden Key Individual Members

J H Fry; J H Greasley; WJ Rogers; David S Robinson; Stuart Townsend; Andrew Cornes; Andy Campbell MG, CGCS; Roger Barker; Chris Yeaman; Iain A MacLeod; Bruce Cruickshank; John Crawford; Stuart Cruickshank

Silver Key Supporters



Silver Key Company Members

Company	Tel: Head Office
Bernhard and Company Ltd	01788 811600
Ernest Doe & Sons	01245 380311
General Legal Protection Ltd	01904 611600
Heath Lambert Group	0113 246 1313
RainBird	01273 891326
Syngenta Professional Products	0041 613 233 028
Wolf Proline	01495 306600

Silver Key Individual Members

Clive A Archer; Douglas G Duguid; Robert Maibusch MG; Elliott R Small; Steven Tierney; Richard Lawrence; Clive Osgood; David Robinson; Richard Stillwell; Stephen Dixon; Ian Sample; Paul Jenkins; Robert Hogarth; R Steele; Lee Reif; Raymond Warrender

Ken Richardson looks forward to this year's autumn training courses and reminds Course Managers of their responsibilities for reducing workplace stress.

Many members wonder what they get for their membership fee each year. On average, we spend £25 per member on Education and Training, including: Regional Training Courses, the National Education Conference and Workshops, BTME/Clubhouse Seminars, Regional Conferences, Field Guides, Posters, Lending Library, Manuals, Videos, CD ROMS, DVD, Higher Education Scholarships and Refund of Fees. We have almost completed the planning of this Autumn's Regional Training Courses and places are available on the following:

28 & 29 October	Essential Management Skills	Sunningdale Park Conference Centre
29 & 30 October	Basic Computer Skills	Newark Golf Club
4 & 5 November	Next Steps in Management Skills	Beedles Lake Golf Club
11 November	Fire Safety and Manual Handling	Pennard Golf Club
25 & 26 November	Basic Computer Skills	BIGGA House

Each one-day course costs BIGGA members just £30 + VAT (35.25) and each two-day course costs £60 + VAT (£70.50). As the actual cost of staging a one-day course is £80 plus VAT and £160 for a two-day course, members can gain a subsidy worth more than their membership fee by attending just one day of training.

Courses in Tractor Driving, Risk Assessment, Presentation Skills, Abrasive Wheels and Chainsaw Operation are being held this autumn, however, they are already sold out.

More courses are being planned for the Spring of 2004, including, Tractor Driving, Further Computer Skills, Risk and COSHH Assessments, Budgets and Finance. Watch out for details of these and other courses in future editions of Greenkeeper International.

STRESS MANAGEMENT

The Health and Safety Executive treat hazards that lead to stress related illnesses in the same way as hazards leading to physical injury. Major changes in Health and Safety Law have made it easier for employees to take an employer to an Industrial Tribunal for stress related issues and, since stress can be caused by depression, a condition covered by the Disability Discrimination Act, there is no limit to the damages that can be paid out.

Workplace stress is of increasing concern and it has been estimated that stress related illnesses are responsible for more absenteeism from work than any other cause. However, due to the stigma associated with reporting stress, there has been a high degree of under-reporting. This is set to change and golf club managers need to analyse the risks to health and safety caused by stress. Many may think that there is nothing stressful about being a greenkeeper as they work outside in the fresh air and have very little responsibility. Anyone who thinks that is wrong and the problems that have been shown to lead to stress can be applied to greenkeeping and golf course management as well as many other jobs.

How many of you recognise some or all of the following as being a problem at your golf club:

- Boring or repetitive work or too little to do
- Too much to do in too little time
- Too little training for the job
- Too much training for the job
- Confusion about roles

- Having responsibility for others
- Poor working relationships
- Bullying, racial or sexual harassment
- Inflexible work routines
- Physical danger
- Poor working conditions
- Lack of communication
- Lack of support for personal development
- Blame culture when things go wrong

Golf Course Managers and Golf Club Management must implement strategies to control or remove these risks. Some are easy to put right by training. For example by providing training when and where necessary and increasing the scope of jobs for those already trained. Change the way in which jobs are done giving workers more variety of tasks. Avoid bullying and/or abuse.

I am sure that many of you will say 'it's yet another set of rules that meddle in affairs that are not the concern of Government' but as with all Health and Safety, reducing stress is a matter of common sense. Think about your club and reduce the risk.

Further information can be found at www.hse.gov.uk/stress/index.htm from the HSE.

Tony Smith, Course Manager at Teeside Golf Club will be presenting a seminar on Stress in the Workplace on the Continue to Learn Programme on Wednesday 21 January 2004.



GREENKEEPERS Can Join Jet Set



Greenkeepers at East Lake Golf Club, Atlanta 2003

- There will also be wonderful opportunities to discuss greenkeeping practices with your counterparts across the pond.
- Visits will be organised to prestigious golf clubs to see and discuss first-hand management practices at the US courses.
- You will be able to attend seminars to help you develop your professional career.
- Bernhard and Company hosts a Prestige Dinner, to be attended by leading Superintendents throughout the US together with the selected greenkeepers.

"We are delighted to have the opportunity to develop our relationship with British Greenkeepers by sponsoring this group of BIGGA members to travel to the US show in February," said Managing Director, Stephen Bernhard.

"The enthusiasm displayed by the participants of the previous trip has been overwhelming."

Following last year's trip to Atlanta delegates had the following to say:

Gordon McKie, Head Greenkeeper, St Andrews Links Trust:

"I enjoyed the Interaction with Superintendents from the US and learned new things about their practices which I could bring back to the UK."

Mark Ellis, Course Manager, Stocks Hotel Golf & Country Club:

"My trip to Atlanta has motivated me significantly. The US has more money to spend and so many staff I feel they can go around with a dustpan and brush on their courses."

Grinding specialists, Bernhard & Co has strong links with the US where a high percentage of the Top 100 courses use their grinders.

In conjunction with BIGGA, Bernhard is offering 10 greenkeepers the opportunity of a lifetime, to take a trip to the leading golf show in the US the GCSAA Golf Course Conference & Trade Show to be held in San Diego, California, in February next year. It is the third year such a delegation will be heading to the States, following on from the very first one which visited Canada.

ALL BIGGA GREENKEEPER MEMBERS ARE ELIGIBLE TO APPLY.

Jeremy Hughes, Course Manager, Vale of Llangollen:

"Following my winning a place on this trip the members and Committee at my Club were very positive. Communication is the key. I wrote out how I applied, what I would be doing, how I was selected. From the whole experience I feel I should improve as a person and a Course Manager."

Bernhard is keen to develop educational links at all levels.

"We have a wonderful relationship with several of the GCSAA board and their management," said Stephen.

"These leaders of the American Golf industry are extremely generous with their support for the British group.

"They certainly set a great precedent for us all to embrace as we seek to improve international understanding and shared education.

"From the increased number of applicants each year, it is evident BIGGA greenkeeper members realise that this is a wonderful opportunity and how vital it is to keep learning from new experiences such as this," said Stephen.

The value of the Delegation is also appreciated by BIGGA.

"We are indebted to Bernhards, and in particular Stephen, for their very generous support of this wonderful opportunity for BIGGA members. Everyone who has been a part of a Delegation has taken a great deal out of it and I'm sure the same will be the case with the 2004 group," said BIGGA Chairman, George Brown.

To enter just complete
the form on the front of
this magazine and return
to BIGGA HOUSE before
30 September 2003

Enrol for a Trip of a Lifetime
Want to go **FREE** to fabulous **San Diego** and the
GCSAA Turf Conference in February 2004?
sponsored by
Bernhard and Company
Express Dual Grinders
BIGGA Greenkeeper Members are eligible —
all you need to do is apply with this card
TO ENTER — fill in the form on the reverse and return NOW

The Membership Department would like to welcome 44 new members to the Association and discusses the Personal Accident Insurance policy in a bit more depth.

Personal Accident Insurance

Some confusion has arisen, recently, about what is and what is not covered by the BIGGA Personal Accident Insurance Policy.

We hope that this article will help to clarify the situation.

The BIGGA Personal Accident Insurance Policy provides cover 24 hours per day, 365 days per year.

Members are covered at work, at home and during leisure activities if they sustain 'Accidental Bodily Injury' which causes death, permanent total disability or temporary disability.

The policy does not cover illness or disease not resulting from an accident or injury, nor any naturally occurring or degenerative disease/illness, nor any gradually worsening condition such as arthritis or osteoporosis. Moreover, it does not cover the first 28 days of any qualifying incapacity.

These conditions exclude cover for any illness that is



not the result of an accident. However, it is sometimes difficult to be specific as each incident is different. For example if a member was hit by a golf ball and died from a subsequent heart attack, which was deemed to have been caused by being hit, then the insurers would consider this as a valid claim. However, a heart attack, which was not as a result of an accident, would not be covered.

It is difficult to give precise clarification as every claim is judged on its merits. However, the key word in the cover is 'Accident' which must result in 'Accidental Bodily Injury' for the claim to be successful.

If you have been injured as a result of an accident and would like to make a claim then call 0800 316 1331. If you would like a copy of the insurance policy leaflet issued to members then call the Membership Department on 01347 833800.

People

How well do you know the people who work for the Association?

In this new series we give you a chance to learn a little more about a member of BIGGA's Headquarters staff



Katie Davies

Position:
Sales Administrator in the Sales Department

What does your role involve?
Copy chasing, generating new sales leads, following up existing sales opportunities and helping with the daily running of the magazine's sales team

How long have you worked for the Association?
Nearly four months now

Where were you born and brought up?
Harrogate – where BTME & ClubHouse is held

Where did you work before you joined BIGGA?
I worked for a company that supplied saunas, spas and steam rooms to the leisure industry. I was responsible for all consumable sales

What are your hobbies?
Socialising with friends and generally having a good time! (Oh yes and talking!)

What is your favourite food?
Mmmmmmm... Paella, Steak, Duck and Pancakes, Raspberries, Carrot Cake - I love food so anything and everything!

What is your favourite film?
Catch Me if You Can, Eight Mile and The Crow and loads more that I can't think of

What was the last book you read?
Started to read a diet book about a month ago, but got bored by the third page so decided it wasn't worth the hassle and tucked into some cake!

Who is your all time hero?
Everyone gives this answer, but it's so true – my Mum. x

What was the best event you've ever attended?
Peter Kay live in Leeds. I think he's the funniest man ever and his series Phoenix Nights is not to be missed.

What is your claim to fame?
Having my picture in Greenkeeper International!

We're giving away a fantastic digital camera to one lucky member. The camera features a movie facility and a multi mode flash. It has a 1.5" LCD screen and a picture resolution of 2 million pixels. The package also includes a memory card.

To enter the prize draw all you have to do is introduce one or more new greenkeeping members to BIGGA. Make sure your name goes on their application form as the person who referred them and we will enter your name into the draw. Remember the more new members you refer the more chances you have to win!

Either call Gemma today in Membership Services on 01347 833800 to request a new member application form or complete the form on the outer cover of this magazine and return to BIGGA HOUSE before 30 September 2003.

The draw will take place on 1st October and the winner will be announced in the November edition of Greenkeeper International.

WIN A DIGITAL CAMERA



Message of the Month Winner

Our congratulations go to September's winner, Marc Haring from Cumberwell Park Golf Club whose message was posted on the 21st July under the 'Talking Shop' section. A fantastic FM desktop scan radio is on its way to you!

BIGGA welcomes...

SCOTTISH REGION

Fraser Brown, North
Graeme Farquharson, North
Stephen Mcblain, Ayrshire
Steven Mcleod, West

NORTHERN REGION

James Atkinson, Cleveland
Michael Barker, North Wales
Mark Barras, North East
Graham Curtin, Northern
Shaun Drum, Northern
Matthew Gilbertson, North East
Dean Gosney, Northern
Christopher Gotts, North West

Robert Havelock, North Wales
Alister Mcfarlane, North West
Joseph Monaghan, Northern
Carl Peacock, North West
Christopher Porter, North West
Steven Rendall, North West

MIDLAND REGION

Benjamin Bierley, East of England
Christopher Buchanan, East Midland
Mark Flecknor, Mid Anglia
Alan Key, East of England

SOUTH EAST REGION

Alan Abrey, Surrey
Anthony Brennan, Kent
Stephen Matthews, East Anglia
Steve Peters, Surrey
Jason Rook, Kent
David Rowland, Surrey
Bill Shepherd, Kent

SOUTH WEST/SOUTH WALES

John Barnes, South Coast
Victor Dyer, Devon & Cornwall
Sean Heard, South West
Andrew Johnson, South West
Keith Kemp, Devon & Cornwall

Shaun McCanna, South Coast
Joe Missen, South Wales
Luke Rand, South Wales
George Stephens, Devon & Cornwall

STUDENT MEMBERS

Tommy Mcfadden, Northern Ireland
Steven Halliwell, North West

ASSOCIATE MEMBERS

Richard Greville, East Midland
Mike Wattam, Sussex
William Brennan, Usa

AUGUST'S MEMBERSHIP DRAW WINNER

Just introduce one or more new greenkeeping members to BIGGA and your name will be placed into a draw to win a fantastic BIGGA Clock/calculator/calendar and alarm. Our congratulations go to September's winner, Andrew Harding of Boyce Hill Golf Club.

Course Feature

To the Manor Born

Scott MacCallum met up with Kneale Diamond, whose job at Marriott Hanbury Manor brings all sorts of challenges.



There are some occasions when a nice quiet round of golf, a chance to smell the roses, is just what the doctor ordered. On other occasions it is good to feel the thrill of being at the sharp end, where the action is.

An example of the two bunker types with the older darker sand in the foreground and the modern lighter sand in the background

Kneale Diamond

Marriott Hanbury Manor near Hertford, north of London, can offer a bit of both, but if you are really in the mood for a bit of excitement how about going through your pre-shot routine for your approach shot. You take careful aim, about to undertake a smooth, kink-free back swing only to have to pull away. A helicopter is taking off just a short distance away and the noise of the rotors is barely drowning out the screams of excited young girls.

That could have been the scenario if you were playing the course at the beginning of August when Robbie Williams, watched by a host of young admirers, flew off, having used the hotel as his base during his world record breaking Knebworth concerts.

Course Manager, Kneale Diamond, was on "crowd control" duty that Monday morning, just another example of what he finds himself doing at one of the highest profile hotels and golf course developments in the country.

"We have a lot of celebrity visitors at Hanbury Manor, a lot of footballers are members, but I must say it was good to see Robbie Williams from only 20 yards away," said Kneale, as we spoke the following day.

Kneale has been at Hanbury Manor for three and a half years having previously been Assistant Course Manager at the London Club.

"When I arrived it was as Acting Course Manager under Kenny McKay, who was about to move to Marriott Forest of Arden. I was attracted to the fact that it was a big name, quality venue, with the potential to go further and I liked the idea of working for a hotel chain which included other golf courses," he said, as we sat in the lobby of the five star hotel.

"It was also a tournament venue having hosted three English Opens in the late '90s won by Per Ulrick Johansson, Lee Westwood and Darren Clarke."

The golf course was designed by Jack Nicklaus Jnr and opened in 1991. It breaks down into distinct halves with a completely new nine forming the front nine and the back nine, which has a more parkland feel to it, built on land which had been home to a Harry Vardon-designed course. Two of the original Vardon bunkers are incorporated into the Nicklaus Jnr layout.

When he did take up the post Kneale found that he had quite a bit of work to do if his ambitions for the course were to be realised fully.

"Like every Course Manager who takes over a new job you do find a few shocks in store, and for me it was the irrigation system," said Kneale.

"We were losing four fifths of the water we were putting on through leaks," he revealed.

"That meant if we wanted to irrigate tees, greens, approaches and fairways taking into account the amount of water we were losing, it would take 24 hours to do it, which would mean closing the course for a whole day just to irrigate as opposed to a seven hour job if we didn't have leaks. We used to soak the golf course for two days and get as much water on as we physically could, then shut the system down and two guys would then spend three days a week repairing all the leaks," said Kneale, who added that in addition to the time spent on the job the water wastage could amount to over £300 a night.

"My first job was to convince my bosses that what had been in place wasn't good enough, bearing in mind that it had coped with three English Opens and the



The Hanbury Manor Team

development of Hanbury Manor into one of the top courses in the country," explained Kneale.

"It was a case of building up my bosses confidence in my abilities by showing them what I could do and what I'd like to do in future. I told them just how much water we were losing and the cost and manpower implications of that."

He then sat down with Mark Ganning, of Rainbird, and designed two systems - one all singing and dancing, a triple row system with very efficient full circle on fairway and part circle on edges and another cheaper version with just a single row of pop-ups.

"Obviously I wanted to go for the better one, anyone running a golf course would. I put forward the cost implications of both systems and persuaded them that we would be investing in the future if we went for the better system as it would be more efficient. Happily they agreed."

Not having had any experience of project management, but keen to make sure he kept a hands on approach to the installation of the new system, Kneale spoke with greenkeepers who had been through similar jobs and sought advice as to how best to work.

"I was delighted to work with Rainbird, who had been very good to work with in the past and we specced the system to do exactly what we wanted it to do, with larger pipe sizes so we could run for shorter periods and move water about more efficiently. It was very solid."

MJ Abbott were the installer and Kneale has been delighted with the quality work they produced.

The system is going in in three phases with the first two completed and the other being carried out in October this year.

Phase one was putting in the mains for all 18 holes, tees, surrounds and approaches and this was done between February and May last year. Phase two was the front nine fairways and some of the landscaped areas, while phase three will be the back nine fairways and a weather station.

"The project has been phased as we have a lot of corporate golf and prestigious golf days and members expect the highest levels of presentation so we had to keep disruption to a minimum. Also, financially, it made sense to break it down into three phases."



Rolawn[®]

BRITAIN'S FINEST TURF

**GREENS
TURF**

**For the best deal call
01904 608661**

www.rolawn.co.uk

So effective, it's a crime



Spearhead* works fast. Especially against clovers and speedwell. Just a single application controls a wide variety of turf weeds for the entire season.

Spearhead can even be applied on turf as young as two months with outstanding results.

Spearhead. It ought to be locked up.



Bayer Environmental Science
A Business Group of Bayer CropScience
Durkan House, 214-224 High Street,
Waltham Cross, Hertfordshire EN8 7DP
Tel: 01992 784260 Fax: 01992 784276
www.bayer-escience.co.uk



Bayer Environmental Science



Associate Member

SPEARHEAD* contains MCPA, clopyralid and diflufenican (MAPP 09941).
ALWAYS READ THE LABEL : USE PESTICIDES SAFELY.

*SPEARHEAD is a Trade Mark of Dow AgroSciences. © Bayer Environmental Science 2003.

chipco
Professional Products



A view of the front nine

The decision to go ahead last year has been vindicated by the weather subsequently.

"March was bone dry here with very little rain at all while this July saw average temperatures of 25.4 degrees," said Kneale, as we sweltered on the hottest day of the year so far. August temperatures are likely to break yet more records.

Having tackled the irrigation problems, Kneale and his team, also took on the courses 84 bunkers as another major project.

"In the initial planning approval for the course it was stipulated that the bunker sand be the same dark orange colour as the hotel bricks. It's not always the most appropriate sand for bunkers."

With the course now established and the planners a little more relaxed they have been able to move to a much lighter coloured sand and the change was made as part of a complete overhaul of the bunkering.

"We carried out the work in-house removing the sand, reshaping the bases and replacing the drainage. Basically we rebuilt them from scratch and have completed all greenside bunkers and two thirds of the fairway. The remainder will be completed by October."

Working on the bunkers highlight another problem that hadn't revealed itself in the relatively youthful history of the course.

"We have uncovered cars, engines and brick walls not too far under the surface. Only recently we found a car engine just six inches below the surface of a fairway. In bunker reconstruction we often found brick walls under the surface which caused headaches and had perhaps caused a change in the shape and depth of the bunker," said Kneale, who has also recently added additional cart pathing to areas of the course.

Being part of a large group has given Marriott the flexibility to make changes to cope with the downturn in the general and golfing economy.

To facilitate this Kenny McKay, in addition to his role at Forest of Arden, has recently taken on the role of Senior Courses Manager for the group and is looking at ways of the hotels, which include such illustrious venues as Dalmahoy, St Pierre, Tudor Park and Meon Valley, working together.

"Kenny has visited all 11 venues and done reports on each and we are working much more closely together. For example when the seasonal staff finished last year, I worked below full staffing but took on a couple of guys from Dalmahoy for a period. It worked very well. Another example of co-operation is the fact that we had perhaps 10 hollow corers in the group and whereas in the past another venue might have hired one in, now we would lend one out, as it may well have been sitting in the sheds doing nothing anyway. We now all have trailers to enable us to transport machinery around the country."

Kneale is well supported by his Director of Golf at Hanbury Manor, Iain McNally, who started at the Hertfordshire resort just a short time after his Course Manager.

"The challenge which Kneale has and with which he copes very well is that the golf course is a fixed cost area, in which I mean that whether the course is played or not it has to be maintained. In the case of banqueting and bedrooms, for example, if they are not used there are minimal costs involved so costs can be flexed but not so with the golf course."

Iain is also keen to look at ways of helping Kneale and his team which includes three gardeners to make life easier for him.

"We have 10 acres of formal gardens and when everything is in bloom they look great but we have many weddings each year and the gardens only look their best for a couple of weeks, so looking at ways of using plants which look good for longer and are easier to maintain may be the way ahead."

Kneale, at 29, is the oldest greenkeeper on the staff with his Deputy Jon Clarke, 25 and the majority of the rest of the team coming in at around 20-21.

"As we don't offer tournament golf at the moment we had to look at what we offer staff who work at Hanbury Manor. I want to make it a real learning experience for staff and have looked to set up a scholarship scheme similar to that in place at Gleneagles, and I have spoken to Jimmy Kidd on the subject.

"We have organised exchanges where guys can work around the world and included among these have been trips to work at the Hong Kong Open, and to assist Peter Bradburn in the grand opening of Aphrodite Hills in Cyprus. We also send staff to work at other Marriott properties to help prepare for tournaments such as the Europro Series. These opportunities are all explained to staff at interview. I'm delighted to say we have had zero turnover in the last year and when people do go it tends to be to bigger jobs - the two Head Greenkeepers at Forest of Arden were here previously and we had someone who is now a Contracts Manager in Abu Dhabi."

Among the other projects in the pipeline is a new maintenance facility, practice facilities and continued development of the golf course so crowd control duties for Robbie Williams' visits are going to have to take second place to his greenkeeping work.

MACHINERY INVENTORY

Toro Workman 43000
 2 Toro 5500
 Toro 40000
 Toro 32500
 Toro GM3100
 Toro 31000 S/W
 4 Toro 1000
 4 Toro 500
 Toro Sandpro
 Toro Greens Aerator
 4 John Deere 6x4D Gator
 Kubota ST30 + Loader
 Kubota L3300
 Antonio Carrero TTR 4400HST
 Groundsman 8120 CTM Aerator
 Vertidrain 1.2m
 Shattermaster
 Gambetti 800L Sprayer
 Toro Topdresser W/M
 Blowers/Strimmers/Trimmers/Chainsaw etc
 Various Trailers
 2 Massey Ferguson ATVs
 Trilo SFI50 Vacuum

COMMUNICATION - MAKING YOUR CASE

There's an old saying: "I want never gets". It's true, but not because of what you want, more probably the way you ask for it.

It makes no difference whether you are the Prime Minister or a Course Manager, the principles of persuasive and professional presentation of your case are important in winning support for it. The only difference is that successful politicians tend to recognise this and are always working to develop their skills, whereas the greenkeeper may not see this as an essential part of the job!

Successful presentation of your case to the committee or the proprietor involves two key areas: planning and delivery. In short, what you are going to say and why, plus how you say it – the skills of the presenter. Let's look first at what you are going to say to make the case for what you want.

*Continue
to learn*

PREPARATION – Consider the Benefits

First, think BENEFITS. Think about the machine you want the club to buy, or other new investment you want it to make. For example, an irrigation system or new buildings. What will this do that the club wants to be done? Unfortunately, it's more common to think in terms of the features of a machine, which may not be particularly persuasive. For example, a feature of a new greens machine may be that it has a diesel engine. By itself, this may mean little to the person making the buying decision. However, when you add that it will reduce running costs by £x per season through reduced maintenance, lower fuel costs, etc, you are turning a feature into a benefit.

The "SO WHAT" Test

There is a simple test you can run to check whether you are talking about a feature or a benefit. Just ask "SO WHAT?" after the statement. It's important to avoid using benefits in a presentation like a shotgun – blasting away and hoping that some will stick. Instead, they need to be used like a rifle, to pinpoint the specific needs of the club. If the decision makers are concerned about the operating costs of the club, then the benefit of changing to diesel will have real value impact. However, if the club has more pressing needs that are not addressed by your proposal then this benefit lacks impact. Finally,

always attempt to quantify the benefit. In the example above, that means working out the total potential savings per season in hard cash.

In most commercial organisations, which should include members' clubs, benefits usually relate to financial returns – ie, money earned or saved – even if this comes in a less direct way such as the presentation of the course to attract more visitors, which increases green fee income. Other important motives include "fear" – for example, the prospect of the inability to turn the course out in a specific condition for a major tournament because the machinery isn't capable of doing the job; and "status", which could mean buying new machinery to take advantage of the opportunity to stage a prestigious tournament.

TABLE: Features Functions Benefits Proof. (See below.)

A Three-Part Structure

Next, is the structure of the presentation: "Tell them what you're going to tell them", "Tell them" and finally "Tell them what you told them!" This simple structure will serve you well, if you follow it carefully.

Telling them what you are going to tell them means setting out a simple route map for the presentation. It is important to open with impact, to grab

FEATURE or BENEFIT?

FEATURE

What the product is or has – eg, it has a diesel engine, capacity, power output, manufacture, etc

FUNCTION

What the product does or has that the decision maker wants or needs, eg, it is more economical

BENEFIT

What does this mean to the club or business – eg, cost savings, increases in performance or output. This links to a buying motive – eg, financial, fear, status, etc

PROOF

Evidence that substantiates the benefit – eg, manufacturer data, independent reports, the experience of other clubs, etc

Each of these elements should be linked using phrases like "which means that", "as a result", etc, to form a simple, flowing statement.

Keith Jaynes looks at how effective presentation skills can help greenkeepers get the new course equipment they need

TORO Count on it.

the attention of the audience, whether it's one-to-one or the whole committee. Using the example above, you could ask a rhetorical question "Do you know how much it cost us to run x machine last season?" following with the answer, "Ey".

You can then go on to set the agenda with a short statement like: "In the next 15 minutes I'd like to show you some of the options we considered to reduce these costs, and one solution in particular that I think fits the needs of the club pretty well because it could help us save up to 15% on our machinery operating costs."

Having set the scene, follow with the main part of the presentation. First, outline the current situation and make sure you relate this to issues that are the direct concern of the audience. Remember, you must state the need (yours is the machine) in terms with which the audience can identify, for example revisit the rising cost of maintenance or the challenge of staging the major tournament.

Consider Other Options

At this stage you can include an additional step that adds real power to your ideal solution. This is to suggest one or two alternative possible solutions you have considered but, more importantly, why you have discarded them – eg, refurbishment of an existing machine – ruled out because of high cost and temporary reduction of machinery fleet at critical time. This step shows that you have considered your proposal very carefully and also serves to pre-empt some possible objections you might encounter later from the audience.

Presenting Your Solution

Next, present your ideal solution. It is important to de-personalise this and instead of using phrases like "I think" or "I need", which could infer that this is in your interests only, pick out the specific points of your solution that relate to the needs which the audience has already agreed are important. If the key need is reduction of costs, select the features of the machine and its operation that do this. Explain how they do this, never assume that the audience already knows or understands your world in the same depth that you do! Make sure you turn the features into benefits and that these are tailored to the needs of the audience or the club.

Ask for a Commitment

Finally, it is important to summarise what you have said, restating your ideal solution and the major benefits. However, one final step remains, "Ask for a commitment!" Naturally, what you want is agreement to go ahead and place the order with the supplier. Getting agreement means you must ask for it. This requires a closing statement – eg, "On the basis of what I have shown you, will you go ahead now and approve the purchase of this new machine?"

The best technique is to put up and then shut up! Always wait for the answer. It can only be one of three things, "Yes", "No" or "Maybe", so come to terms with the fact that people do say "No", but also that they are less likely to reject a well thought out proposal. Having said that, "No" should always be challenged to establish "Why?"

The commitment may also include the agreement of committee members to attend a demonstration of a new machine, or a visit to a club with similar machines or installations where you know you will receive backing from a fellow greenkeeper!

However, don't bank on this unless you prepare for success by planning the demonstration or visit down to the last detail. The more substantial your proposal the more important thorough planning becomes to eliminate nasty surprises.

Good Preparation = Confident Delivery

If what you say is one key element of a successful presentation, then how you say it is the other. Many people have a genuine fear of making formal presentations. This is probably because public speaking involves a set of skills

that are not called for under normal conditions in their jobs. Surprisingly, these are not new skills, but ones we already possess. It's just that practice is required to develop them to the point where we can use them confidently and effectively in public.

The Speaker's Assets

Most important is the use of the voice. It has many different components that can add colour and interest to what we say. These include its pitch, its volume, its pace and its tone. We also have the ability to turn it on and turn it off! Silence is a valuable aid to add dramatic effect.

Second is the "presence" of the presenter and the descriptive use that is made of hand gestures and mannerisms. Unfortunately, nerves and lack of confidence can often make the hands head for the safety of the pocket where they are free to jangle car keys or to count loose change! When this happens, you can bet the attention of the audience turns to what's happening to the keys rather than the speaker's message.

Facial expression is important too

Your expression should mirror the message you are sending, for example, no one would dream of delivering bad news with a smile, but nerves can often have this effect on the mouth. The eyes also have an important part to play in receiving feedback from the audience – eg, are people nodding in agreement or do their expressions and actions show they are losing interest or concentration?

Finally, there is the use you make of simple visual aids and other presentation support media – eg, pictures that show what a particular machine looks like (these may be from the manufacturer's brochure) or a broken component from an existing machine. You may have access to an overhead projector or the opportunity to work with a specialist from the manufacturer, which will add interest for a larger audience.

Similarly, a pre-prepared flip chart may also help to keep your presentation on track.

It certainly helps to write the key points that you want to make on a series of numbered post cards (numbered in case you accidentally drop them during the presentation and need to find your place again in a hurry!). In addition, cards don't betray a small shake of the hands if you are nervous! Simply list the key points you want to make but leave the words open, letting you speak normally and with animation. Nothing is worse than presenters who read their presentation word for word!

The Way Forward

The key to successful presentations is good planning and preparation. This takes time and effort. It is important to talk to committee members or proprietors and managers regularly to understand their views about the course and what they are trying to achieve. It also helps to run through your presentation and hone it with someone you trust. This will increase your confidence.

Formal training also helps, where you have the opportunity to master both the development of the material and the speaker skills in a controlled, non-threatening environment.

About the author: Keith Jaynes is a Director of Key Associates, a company that specialises in training, marketing support and financial services for businesses in the agricultural and turf-care industries. He has held senior training and marketing positions in a number of major UK and international companies and has worked extensively delivering tailor-made skill development programmes in the UK and Europe. He is also a member of Committee and a past Captain of his local golf club.

TALKING HEADS

Compiled by Malcolm Huntington MBE

1

What sort of system do you have at your course and how old is it?

IRRIGATION



Name: Ian Gunn
Address: Strathpeffer Golf Club
Region: Scottish
Course type: Upland/Heathland (18 holes)
Staff: Head Greenkeeper plus two

We have a gravity fed system, perhaps unique in Britain, with running water from a pond at the top of the course. There is a 600 foot drop from the highest to the lowest point on the course.



Name: Steve Oultram
Address: Wilmslow Golf Club
Region: Northern
Course type: Parkland (18 holes)
Staff: Course Manager plus five

We have a Watermation TW2 system which covers greens and tees. We spot water other areas.



Name: Cedric Gough
Course: Broadway Golf Club
Region: Midland
Course type: Cotswold (unlike parkland, links or heathland, it tends to be a mix of all three based on limestone with a clay-like soil)
Staff: Course Manager, plus five

A two-wire control system with a Watermation TW2 controller. Greens pop-ups are Royal Coach impact type. Tees are gear driven Hunter 1J1s. Installed 1992.



Name: Terry Huntley
Course: West Hill Golf Club
Region: South East
Course type: Heathland (18 holes)
Staff: Course Manager, plus five, plus mechanic

Toro Site Pro system which is four and a half years old. We have wall-to-wall irrigation for tees, greens, fairways and approaches.



Name: Phil Wentworth
Course: Army Golf Club, Aldershot
Region: South West & South Wales
Course type: Woodland/Heathland (18 holes)
Staff: Course Manager, plus five

A Watermation system for greens, surrounds and tees only. It was installed in 1980.



Name: Greg Ferson
Address: Loughgall Country Park golf course.
Region: Northern Ireland
Course type: Parkland (18 holes)
Staff: Course Park Manager, plus Head Greenkeeper, plus four

The Rainbird system was installed three years ago when the course was built. It does only greens and surrounds. We water tees manually.

2

Where does your irrigation water come from?

We have a pond at the summit and another lower down on the course, which gives us a plentiful supply. The course slopes 170ft from the 1st tee to the green.

Mobberley Brook, which runs alongside the course, is an excellent source. It is a good size and in the 13 years I have been here it has never got near to running dry.

We are supplied by mains water filling two 12,000 gallon storage tanks.

Two bore holes which are our main supply. If the river drops to a low level we can switch to a back-up mains supply.

The mains supply, which is metered, is connected to our storage tanks.

We have a 35-acre lake nearby which gives us access to plenty of water, should we need it.

3

What are the plusses and minuses of the system?

The plus is that it doesn't cost us a penny. There is never a breakdown and the pipes are so far under the ground that they don't burst. The minus is that it is labour intensive as it is a manual system.

It is a good system and does the job well, but can do only one green at a time. In an ideal world I would like a valve in head system.

Plus - Easy to maintain, all in-house maintenance. Simple to operate and reliable once original decoders, which were unreliable, were replaced. Minus is no control over individual pop-ups for more controlled watering.

Plus - infinite control over where, when and how much water we put on. Every pop up can be controlled individually and we have a remote control. There are no minuses apart from the very odd leak you get in any system.

The plusses are that the no frills system is very simple and never breaks down. It is adequate. Minus - you can only do one green at a time and we have no individual control with timers.

We don't use the system that often as we have a lot of rain in our part of the world. We can do three greens at a time, so that is a plus. There are no minuses.

4

What is your policy with regard to using the system and has it changed in the recent past?

We use it very sparingly and only when the grass is dry or to wash in fertiliser. We seem to get an eight to nine week wet spell followed by the same time dry. The policy has never changed.

A little and often and only enough to keep the grass alive, We never over water as obviously the idea is to promote bents and fescues not annual meadow grass.

Policy changed very little and only when really required. This has always been the case since an automatic system was installed.

The irrigation system is there to keep the grass healthy and alive. A little and often is the motto. A watering system can be a disaster in the hands of the wrong person. We keep our moisture levels high in May, June and July, while after August 1 very little water goes on.

A little and often. Individual greens need an individual amount of water, such as some of our sloping greens. I have not changed the system in the 13 years I have been here.

Our policy is only to water when absolutely necessary in drought conditions or watering in fertiliser.

5

Looking ahead. How do you see the issue of golf course irrigation in 10 years time?

As the water is free it never bothers us. It seems to have got wetter and windier over the years, so as far as we are concerned I can't see any change in the issue of irrigation, though it may well be that many clubs will have to put up with tighter controls in the use of water.

I think there will be pressure on the amount of water we use and we will have to show more accountability. The extraction of water will become an issue.

It would be good to have our own water source to allow wall to wall irrigation with the same policy as above, all computer controlled. Above all, I think there could be strict controls on the use of water in the future.

The main problem may be water supply, the way things are going. I have an open mind on global warming, but history seems to show that planets warm up and cool down. The future availability of water is the main issue.

It is possible there might be tighter constraints on the use of water. However, in the last ten years there haven't been changes, so it is also possible there might not be any in the next ten.

Water conservation may become an issue. I can see it being very tightly controlled in future and there will probably be restrictions.



OCMIS

bringing water to life

Design, Supply, Manufacture, Installation & Service of all Types of Irrigation System throughout the UK & Ireland



For a fast and efficient service or access to the largest stock of irrigation equipment in the UK

T 0870 6005131 F 0870 6005132
E info@ocmis.com W www.ocmis.com

Higher Burrow, Kingsbury Episcopi, Martock, Somerset
TA12 6BU



Take control of your irrigation system.



Gemini/Trident Control System

Just add Toro's simple, affordable, compatible control system.

Converting or upgrading your existing system to a PC-based operation couldn't be easier than with Toro's simple, but highly effective, Gemini and Trident central-control systems.

Flexible, compatible and easy to use, with a user-friendly interface, these systems are packed with the features you need to save time, money and water.

Controlling existing two- and three-wire systems, they will monitor your water usage, detect faults and provide simple diagnostics and online help.

Gemini and Trident Control Systems set the standard in the industry. So for water when and where you want it, let Toro put you in control. For more information, call 01480 226800.

TORO Commercial and Irrigation Products distributed by Lely (UK) Limited
St Neots, Cambridgeshire PE19 1QH. Tel: 01480 226800
Email: toro.info@lely.co.uk www.toro.com



USEFUL IRRIGATION WEB LINKS



IRRIGATION control

Design, Supply, installation and Service throughout the UK and Ireland

Tel: 0845 600 8402 (local call rate)

www.golfcourseirrigation.co.uk



JAVELIN WATER ENGINEERING

Telephone 01507 607175



EFFICIENT AND COST EFFECTIVE SPORTS TURF IRRIGATION EQUIPMENT

www.javelinwater.co.uk




TOP IRRIGATION

Specialists in Automatic Watering Systems

Tel: 020 8905 1892

www.topirrigation.com



irrigation systems designed, installed and maintained for horticulture, gardens and sports



LS SYSTEMS LTD
T: 01772 815080
F: 01772 815417
E: turf@lssystemss.co.uk



www.lssystemss.co.uk

irritech limited

Independent Irrigation Consultants

Specialising in:-

- Existing system evaluation
- System design & upgrade
- Project management

Tel: 01823 690216
email: info@irritechlimited.co.uk

www.irritechlimited.co.uk



OSPREY Irrigation

01939 23 66 77

Design, supply, installation & maintenance
Golf, Bowls, Sports Fields & Landscape Systems

www.ospreyirrigation.com

For more irrigation companies turn to the Buyers' Guide on page 49

The best packages on four wheels for all BIGGA members

LEX FreeChoice are now offering all BIGGA members and their families the opportunity to drive a brand new car with a package not available in any showroom

Great all inclusive prices with no deposit required include:

Any manufacturer, model or marque of car available

Servicing and Maintenance	Road Tax	RAC Cover	
FORD KA 1.3 3DR H/B MANUAL 	£152 PER MONTH	FORD FOCUS 1.4LX 3DR H/B MANUAL 	£250 PER MONTH
RENAULT CLIO 1.2 AUTHENTIQUE 3DR MANUAL 	£154 PER MONTH	GOLF V6 4 MOTION 3DR MANUAL 	£391 PER MONTH
RENAULT MEGANE 1.4 AUTHENTIQUE 5DR H/B MANUAL 	£197 PER MONTH	JAGUAR X-TYPE 2.0 SALOON 	£428 PER MONTH

for more information visit
www.staffselect.net
USERNAME: **bigga** PASSWORD: **cars**
or call 0800 419 930 and quote StaffSelect - 'BIGGA'



All examples quoted are calculated on a 36 month, 10,000 mile p.a. agreement, APR charged as follows -- vehicle list price < £10,000 = 8.9%, < £20,000 = 8.4%, > £20,000 = 7.9%, ask for details. A typical example: *Ford Ka 1.3, 3 Dr Manual, 10,000 miles p.a. 36 month agreement. Initial payment of £152.14 followed by 35 monthly payments of £152.14 (includes 36 months Road Fund Licence) with an optional final payment of £2300. Cash price £6006.20 (includes 36 months Road Fund Licence). Total amount payable £7777.04. 8.9% APR. Optional maintenance contract (includes RAC breakdown cover) at £20.54 per month (inc. VAT). Prices & rates correct at time of issue (June 03), but may be subject to change. Privileged rates are discounted from Lex FreeChoice standard terms. Pictures and features shown may not be identical to model quoted. Offer only available to BIGGA members and family members of participating StaffSelect scheme companies. (certain manufacturer restrictions apply on the number of cars supplied to family members, ask for details). Lex FreeChoice is the trading name of Lex Vehicle Finance Limited, registered number 01992734 and registered address Lex House, 17 Connaught Place, London, W2 2EL.

the one stop shop for golf.

Golf Course
Equipment & Accessories



Golf Driving Range & Practice
Facility Equipment



Amenity & Turfcare
Products

Signage



Tel: +44 (0)121 325 9100 Fax: +44 (0)121 325 9150

Email: sportsandleisure@seoulnassau.co.uk

Phoenix House, Sattley, Birmingham B8 1QE



Watermation

2000 Ltd.

• IRRIGATION SYSTEMS •

"The staff at Watermation 2000 have over 30 years experience in designing, installing and maintaining the finest irrigation systems in the country. From Golf courses to race courses, country estates to gardens. For all your irrigation needs call Watermation"



JACK'S BARN, COMMON ROAD,
SHELFANGER, NORFOLK IP22 2DR

Telephone: 01379 641651 Fax: 01379 640866

Email: watermation@freeuk.com

Website: www.watermation2000ltd.co.uk

Spend more time
on the greens...



While we take care of your
insurance needs

BIGGA members can now call just one number to plan their insurance needs. Contact us today for a no obligation chat. Our rates, service and advice are just a small part of a much bigger package.

- Motor vehicles/Motorcycles – competitive quotes taken from a wide panel of insurers
- Household – discounts for combining building and contents policy
- Travel insurance – generous cover limits
- Pet – protection against the costs of veterinary care
- Caravans – comprehensive cover to suit frequent or infrequent users
- Life Assurance – protection to meet your specific needs
- Mortgages – products on offer from a panel of providers
- Personal Loans – Up to £25,000 at preferential rates (subject to status)

For a competitive quote call now on

01603 828 255

Heath Lambert Affinity Partnerships is a trading name of Heath Lambert Consulting Limited (HLC) and Heath Lambert Limited (members of the General Insurance Standards Council). HLC are regulated and authorised by the Financial Services Authority. HLC Registered No. 0772217. HLL Registered No. 1599129. England and Wales. Registered Office Friary Court, Crutched Friars, London EC3H 2HF.

 Heath Lambert Group
AFFINITY PARTNERSHIPS

SEOUL NASSAU

A Treat in Store!

**BIGGA National Championship,
sponsored by Seoul Nassau**

Coxmoor GC October 6 and Hollinwell GC October 7.

Anyone who has entered or won a place in the field for the 2003 BIGGA National Championship is in for an absolute treat.

Any regular competitors in the BIGGA National Championship know that when it comes to selecting venues we always aim for the best. This year is no exception and in Coxmoor and Hollinwell we have two of the finest clubs in the midlands to test the golfing prowess of BIGGA's best golfers.

Coxmoor was founded in 1913 and runs adjacent to Forestry Commission land close to the town of Sutton in Ashfield. Perched on one of the highest points in Nottinghamshire it boasts some fine views including, on a clear day, Lincoln Minster.

A testing par 73 moorland/heathland course Coxmoor possesses some card wrecking holes. The 5th and 12th in particular are two par-4 toughies. When the prevailing wind blows both are unreachable to all but the biggest hitter, so a sharp short game is going to be required if pitch and putt pars are to be made.

DIRECTIONS

From M1 Junction 27 follow A6087 and A611 towards Mansfield, the Club is left at junction of A611 and B6139 (fourth set of traffic lights).

Further Information - www.coxmoor.freeuk.com

Hollinwell is also known as Nottingham Golf Club and is regarded as a genuine hidden gem with a setting which could have been designed to house a golf course.

Designed around the turn of the century by Willie Park Jnr, with some additional work by JH Taylor the course boasts incredible variety with only the par-3s 13th and 14th running in the same direction.

The closing holes offer a set of different challenges. The 16th is a short par-4 requiring a precise approach to a well protected green; the par-5 17th can be played strategically although big hitters can find the green in two while the par-4 18th is also excellent with any second shot finding the large green worthy of praise.

DIRECTIONS

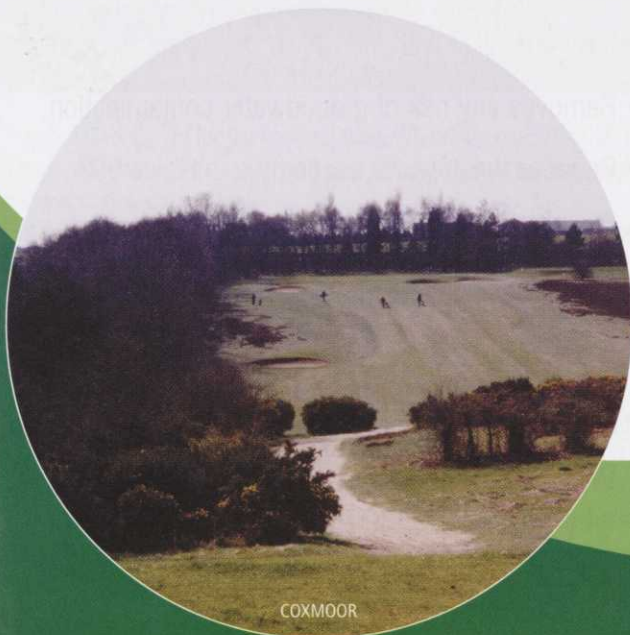
From M1 Junction 27. Four miles south of Mansfield on A611. (Thanks to The Complete Encyclopedia of Golf for information on Hollinwell).

Last year Ian Semple, Course Manager of Old Fold Manor, was BIGGA's golfing champion shooting 75 round Hillside and 77 round Hesketh for gross total of 152 nett 148. It was well deserved having won the gross prize the previous year at Royal Birkdale and Fairhaven.

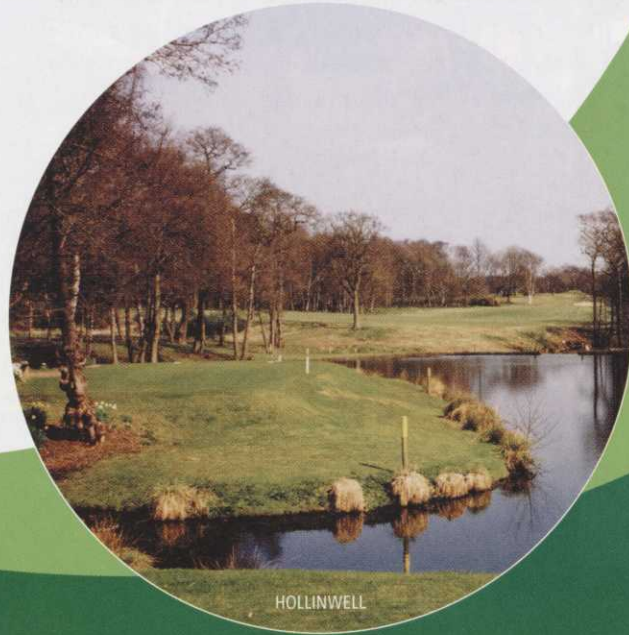
Gerard O'Driscoll, Sales Director of Seoul Nassau is pleased to be sponsoring the event.

"We, at Seoul Nassau, are delighted to be sponsoring such a prestigious event in the BIGGA calendar and are looking forward to meeting the competitors during what should be an exciting two days."

If you are tempted to play in the event there is a possibility that some slots may still be available. To find out contact Sarah Norris at BIGGA HOUSE Tel: 01347 833800.



COXMOOR



HOLLINWELL



Arizona, Here We Come!

Four members of Whickham Golf Club in County Durham are off to America after winning the Great Britain national final of the 2003 John Deere Team Championship golf tournament, held in July on the Brabazon course at The De Vere Belfry.



The Whickham team

The team, joined by a fifth player from the local John Deere dealership Greenlay (Grass Machinery) Limited of Choppington in Northumberland, beat off stiff competition from clubs across Great Britain to take home the title. With this comes an invitation to Scottsdale, Arizona where they will play in the world final at Grayhawk Golf Club in November, against teams from Ireland, North America, Canada, Australia, Germany and Sweden.

Bill Hopper, Club Vice Captain; Gary MacDonald, Competitions' Secretary; Tony McLure, Head Greenkeeper; Andrew Hall, Club Professional, and Roger Stewart, Greenlay, finished three shots clear of the field on a net team score of 56. It was second time lucky for Whickham, as the club also played at The Belfry in last year's Team Championship finals.

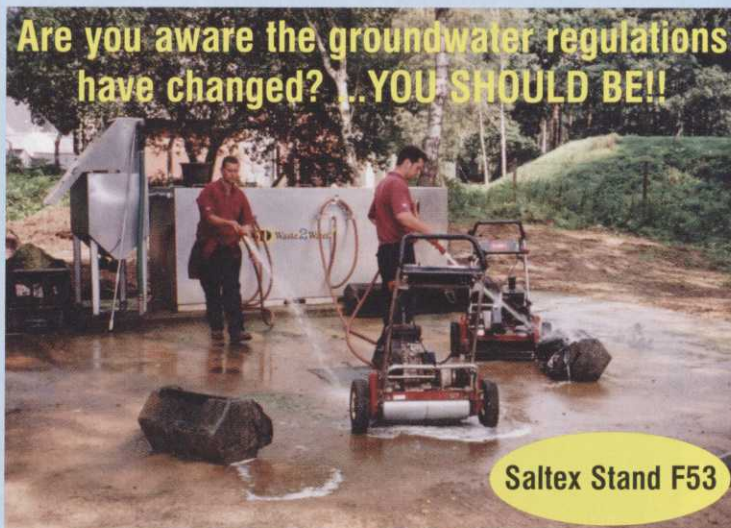
"Playing on the world famous Brabazon course is amazing for a golfer like me," said Roger.

ESD Waste2Water

BIOLOGICAL VEHICLE & EQUIPMENT WASH-OFF SYSTEMS

The leading environmental company with thousands of systems installed worldwide

Are you aware the groundwater regulations have changed? **..YOU SHOULD BE!!**



Saltex Stand F53

- Rapidly converts organic contaminants (oil, petrol, diesel, grease, pesticides, fungicides etc.) into carbon dioxide and water.
- Fully complies with the new groundwater regulations
- Removes any risk of groundwater contamination.
- Reduces wash water usage by a massive 90%.
- External installation for all year round use.
- Only 20 minutes maintenance per week.
- Free design and project appraisal.
- Range of sizes from 1 - 4 Hose.

ESD Waste2Water Europe Ltd.

Tel: 01782 373 878 Fax: 01782 373 763

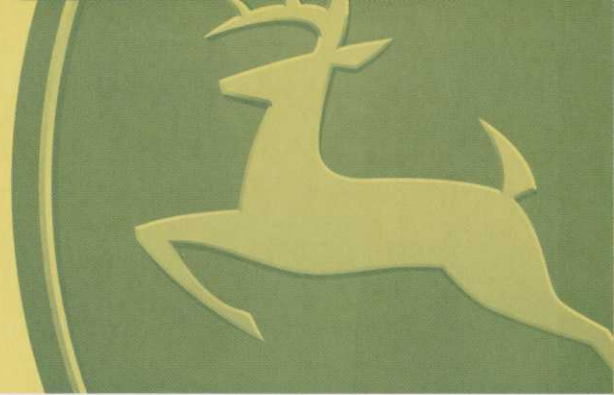
E-mail: info@waste2water.com

Web: www.waste2water.com

With prices starting from as little as £15,000 why risk a £20,000 fine?

Call us now for a free no obligation site assessment and quotation.

After reaching the final last year but failing to make the final step **Whickham Golf Club** will be representing the UK in the **John Deere Team Championship**.



"I only took up the game 18 months ago and had to buy a new set of clubs for this final. The weather was atrocious, and for the first few holes it felt like I was only there to hold the umbrella!

Now I find myself in a team of very experienced golfers and on the way to a world championship competition in America. I just can't believe it," said a delighted Roger.

"Tony McLure has won a few prizes in the past. He's played for Durham and represented England in the Nations Cup. Also, our young pro – Andrew is just 25 – only joined the club in March. We're all delighted about the trip to the USA.," said Gary.

Last year the UK was represented by Brokenhurst Manor Golf Club, with Course Manager Ed McCabe flying the flag for the Association. While not winning, the team performed admirably in the final, and thoroughly enjoyed the experience of playing in such a prestigious event.

Whickham Golf Club was founded in 1911 and has around 700 members. Set in the Derwent Valley, it is a picturesque course with spectacular views, although it is only a few miles from Gateshead's Metro Centre.



18th - The De Vere Belfry

Runner-up in the Great Britain national final was the team from Brickendon Grange Golf Club in Hertford, who won their qualifying tournament, organised by Allen Percival from John Deere dealer, Turner Groundscore, in Dunstable.

Third place went to Sweetwoods Park Golf Club from Edenbridge in Kent; they won the qualifying tournament held by John Deere dealer Palmers Agricultural, who are based in East Sussex.

A Guest team representing BIGGA also played. Led by Past Chairman, Richie Barker and also containing Paul Jenkins, John Pemberton, Scott MacCallum and Malcolm Jackson of John Deere. The team played a straight five man Texas Scramble and shot a bogey free round of gross 62!

Tony McLure was on holiday as the magazine went to press so we'll hear from him on his return from Arizona on how the team gets on.



In order to qualify for the national final, Whickham beat 16 other teams in their regional qualifier, organised by Eric Pattinson of Greenlay, and held at Morpeth Golf Club in June.

Altogether 23 John Deere dealerships took part in the Great Britain tournament, with a total of 390 teams (1560 players) competing. The qualifying tournaments ran from April to July at host golf clubs throughout Great Britain, with each winning team going through to play at The De Vere Belfry.

Now in its 17th year, the John Deere Team Championship has traditionally been open only to teams from the USA and Canada, although in recent years invitations were extended to Germany and Australia. Last year saw Great Britain and Ireland taking part for the first time.

At the awards ceremony John Deere Limited also made a donation of £25 for every British team entered, to support BIGGA's educational activities. Donations are made to greenkeeping Associations in all the countries which take part in the Team Championship.



The BIGGA team

See us at SALTEX
Stand G03

Your favourite ending

We simply couldn't improve **Rovral® Green** - after all it *is* the UK's number one turf fungicide.

We couldn't make it any more effective against fusarium, red thread, dollar spot or many other turf diseases. Nor could we make it any more friendly towards beneficial Mycorrhiza.

Admittedly, we were a bit stumped.

So we renamed it. **Chipco® Green**.

With a new beginning



Now officially launched!

Bayer Environmental Science
A Business Group of Bayer CropScience
Durkan House, 214-224 High Street,
Waltham Cross, Hertfordshire EN8 7DP
Tel: 01992 784260 Fax: 01992 784276
www.bayer-escience.co.uk



Bayer Environmental Science

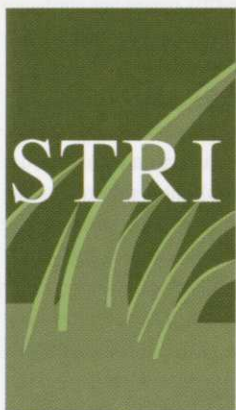


Associate Member

CHIPCO® GREEN contains iprodione. ALWAYS READ THE LABEL : USE PESTICIDES SAFELY (MAPP 09938).
CHIPCO is a registered trademark of Bayer. © Bayer Environmental Science 2003



The SMART way to manage disease



Ruth Mann provides some interesting advice on managing disease

Chemical control of diseases in managed amenity turf may become more limited over the next few years as a result of the European review of all plant protection products used. Only active ingredients that are shown to be 'without danger to human or animal health or to the environment' will pass onto Annex 1. Member States within the European Union will then each decide on which active ingredients they will allow use of in their country.

This decision will usually be made by a government agency (in the case of the UK, the Pesticide Safety Directorate). We have lost quinterozone and triforine (dossiers on both were not submitted to the review) and we may lose more fungicides as the review continues. Therefore, as part of a good Integrated Pest Management (IPM) strategy, we must make the best use of those fungicides we have and ensure that we keep the active ingredients working as efficiently as possible without encouraging field resistance in our pathogen populations. IPM strategies will not only reduce the chance of resistance occurring but may also reduce the amount of plant protection products required providing environmental and financial benefits. An IPM strategy consists of:

- Cultural Practices
- Disease Resistance
- Biological Control
- Plant Protection Products

Good IPM starts long before a disease is ever encountered – we would call it traditional greenkeeping methods. In the IPM strategy it is termed cultural practices. By this we maintain the turf as healthily as possible. There is no exact recipe that can be followed by everyone. Each aspect of your management strategy depends on what you are trying to achieve in the long term and what the problems are to begin with.

CULTURAL CONTROL.

This includes using adequate fertiliser to keep the grass growing but never lush, appropriate fertiliser (such as acidifying fertiliser like ammonium sulphate to discourage alkaline conditions that may encourage certain diseases) and fertilising at the correct times. Returning clippings is also a form of fertilising as the nutrients within them can be broken down and reused. However, they also form food sources for earthworms and many pathogenic fungi and so should be avoided on greens.

Irrigation and drainage are other important issues. If the rootzone of your greens is sandy, suffers dry patch and drought is a problem you will need to irrigate and perhaps use wetting agents. This leads to ensuring that your irrigation water is not alkaline (and so may encourage take-all) or that the salinity is not too high. However, on wet, water retentive rootzones the issues for concern are different. The most important issue is to improve drainage. In the long term this may mean installing drains. In the short term surface drainage can be improved by aeration. This will also help keep the rootzone aerobic and decrease thatch accumulation, which can further exacerbate problems of surface drainage. Thatch layers can encourage the formation of wet surfaces in the winter and dry hydrophobic surfaces in the summer. Thatch can also be the primary source of many fungi that spend most of their time growing saprophytically on the thatch, becoming pathogenic and causing the disease when the environmental conditions favour their growth. Thatch should, therefore, be kept to a minimum.

Airflow over greens is important for the removal of surface water. Many of

the pathogens that affect turf require water for spore germination and infection. By decreasing the length of time the surface stays wet you can reduce the amount of spores that germinate and infect the grass. Removal of surface water can be done by switching and by increasing the airflow over greens by judiciously pruning trees or shrubs that surround the area. Shading by trees and shrubs may increase the length of time for greens to dry due to lack of direct sunlight. Some diseases are also more prone to occur under low light intensities.

The cutting height should be appropriate for the grass species that you are growing. Leaving grass too long can encourage a microclimate more suitable for the pathogenic fungi. However, too short a cutting height leads to stressed grass plants that are also more susceptible to disease. The incidence of anthracnose has increased rapidly over the past few years. Part of the reason for this may be due to the concurrent lowering of cutting height. This may have led to stressed annual meadow grass plants that are more susceptible to anthracnose.

DISEASE RESISTANCE.

Some species of grass are not susceptible (or less susceptible) to certain pathogens. Fescues are not affected by *Gaeumannomyces graminis* (the pathogen that causes take-all). If take-all becomes a problem and is killing bentgrass, the area could be oversown with fescue to keep grass cover and prevent the ingress of annual meadow grass or broad leaved weeds.

Some cultivars are more susceptible to certain diseases. This may be important in the case of red thread. Normally, red thread is associated with low fertility and would be controlled by the application of a nitrogenous fertiliser. However, we are observing red thread that is not controlled by increasing the fertility and requires the application of a fungicide. The tables in *Turfgrass Seed* (Anon, 2003) show varieties of bent and fescue that are not as affected by red thread. For example, *Agrostis capillaris* variety Bardot has a 'freedom from red thread' score of 6.2 compared to Highland bent (*A. castellana*) with 4.3. If red thread was causing a problem on fertile greens Bardot could be used for oversowing which will help establish a bent sward that is not as susceptible to red thread without increasing the use of fungicides.

BIOLOGICAL CONTROL.

Biological controls consist of using antagonistic fungi and bacteria to compete with or parasitise the pathogenic fungi. In a sense, traditional greenkeeping methods help to enhance the biological profile within the rootzone encouraging a natural biological control. The use of applied biological controls can be complicated. The applied fungi or bacteria must be able to establish and persist in the rootzone. They must have activity against local isolates (products with good efficacy in the USA may not be as effective on our pathogens). All applied fungi and bacteria needs to be compatible with fungicide use. In the UK, we have no registered biological controls for

managed amenity turf at present (biological controls that control diseases should be registered as a plant protection product in the UK). In the USA, Trichoderma (a fungus that can compete with and parasitise pathogenic fungi) can be used against pythium and rhizoctonia. However, if the disease becomes established, a fungicide is required. Most manufacturers of Trichoderma can also supply lists of compatible fungicides that will not kill the applied biological control.

PLANT PROTECTION PRODUCTS.

A particularly prolonged period of conducive conditions can increase the disease pressure to the extent that the amount of disease on greens becomes unacceptable despite the employment of all of the above non-chemical control methods. Plant protection products then become an essential part of an IPM strategy.

The pathogen must be correctly identified before any fertiliser or plant protection product is used. Some diseases can be encouraged by fertiliser application. If the identification is wrong and a fertiliser is applied, it may make matters worse. Similarly, some diseases are not controlled by certain fungicides. Applying the wrong one will cost a lot of money and it was never going to make any difference. Seek confirmation if you are not 100% sure.

When you know what the pest or disease is, application of any plant protection product should be carried out according to the manufacturers recommendations on the product label. Remember that all persons applying plant protection products should have the correct training (NPTC certificates) and that you always adhere to the recommendations on the label of the particular product and ensure COSHH regulations are applied.

RESISTANCE MANAGEMENT.

In order to reduce the chance of resistance occurring in our pathogen populations you need to be aware of the properties of the products that are approved. Some fungicides work better on certain pathogens, some provide better control when applied to protect the plants from disease spread

whereas others can cure established infections.

At present we have seven fungicides approved for use in managed amenity turf (Table 1). 'Contact' fungicides protect the plant from infection at the point of application. Contact fungicides such as chlorothalonil do not move from the point of application and so protect the plant at the leaf surface. Therefore, if a spore of *Microdochium nivale* (the causal agent of fusarium patch) lands on a leaf that has been treated with chlorothalonil it will not be able to infect due to the barrier that has been created by the chlorothalonil. Contact fungicides are often multi-site fungicides. This means that in controlling the pathogen the active ingredient works on more than one biochemical process. Pathogens are less likely to develop resistance to active ingredients with multi-site modes of action as it is more difficult for the pathogen to overcome more than one biochemical process being affected.

We often describe iprodione as a contact fungicide. However, this is a little too simplistic as iprodione does have some translaminar movement. It penetrates locally into the leaf surface (it is absorbed but does not move far from the site of application) and so is listed here as a localised penetrant. Iprodione is a single-site fungicide (in that it affects one biochemical process in the pathogen) from the dicarboximide group. It inhibits spore germination (the protective part of the action, similar to chlorothalonil) and prevents mycelial growth (the curative part). Resistance to the dicarboximide group of fungicides is rated as medium. This is because isolates of a pathogen that have become resistant to iprodione are not as fit for survival as sensitive isolates. This means that the resistant isolates will be out competed by the sensitive ones. Therefore, when the exposure to iprodione stops the pathogen population shifts back to being more sensitive to the active ingredient. Isolates of *Sclerotinia homoeocarpa* (dollar spot) and *M. nivale* have been shown to be resistant to the dicarboximides in the United States.

Carbendazim, thiabendazole and thiophanate-methyl all belong to the group of chemicals called the methyl benzimidazole carbamates (MBC). They are site-specific fungicides that affect cell division and so disrupt germination and growth of the pathogen. We would describe these fungicides as



For those that know!

use Advantanta

Amenity Grass Seed

RYEGRASS TEES **MM** 50

- 100% Ryegrass blend
- Fast establishment and recovery
- Fine leaved and clean cut
- High disease resistance
- Hard wearing and good colour

TEES & FAIRWAYS **MM** 22

- Hard wearing mixture
- Fine texture turf
- Quick to establish
- Needs irrigation and fertilisers for best results
- Early mowing recommended to allow fescues to establish

50% Perennial Ryegrass, 20% Slender Creeping Red Fescue, 25% Strong Creeping Red Fescue, 5% Browntop Bent

TEES & FAIRWAYS **MM** 13

WITHOUT SSMG

- Use when SSMG is difficult to establish
- Fine dense compact turf
- Good drought resistance
- Low fertiliser requirements
- High disease resistance

30% Chewings Fescue, 25% Slender Creeping Red Fescue, 35% Strong Creeping Red Fescue, 10% Browntop Bent



Tel: 01529 304511 Fax: 01529 413179
 email: amenity@advantaseeds.co.uk web: www.advantaseeds.co.uk



'systemic'. Again this is a little too simplified. They are acropetal penetrants. They are absorbed into the plant and move within the xylem (the structures that water moves in within the plant). Therefore, after absorption, they can move upwards from the point of application and so can give a longer period of protection than either of the afore mentioned contact or localised penetrant fungicides. The chance of resistance occurring to the MBC's is high as the resistant isolates are fit for survival (i.e. they are not out-competed by sensitive isolates in the absence of the fungicide) and so the resistant population does not reduce even if the use of the MBC's discontinues. There is also a high risk of cross-resistance between the fungicides in the MBC group. There has been a lot of resistance to the MBC's within agricultural pathogens in the UK. However, field resistance to the MBC's has not been proven in the UK for turf pathogens but has been reported in the United States for *Colletotrichum graminicola* (anthracnose) and *S. homoeocarpa*. In the UK, we have established a reduced sensitivity, in some isolates of *M. nivale*, to carbendazim in laboratory based poison assays but this does not indicate field resistance and further work needs to be done to establish if field resistance has occurred in our pathogen populations.

Fenarimol is another acropetal penetrant from the demethylation inhibiting (DMI) fungicide group. DMI's are part of a group of active ingredients that affect a particular step in the production of sterols, which are essential for fungal growth. Therefore, they control the pathogens by preventing fungal growth. Similar to the dicarboximides, resistance to the DMI's is considered to be medium risk as the resistant isolates do not appear to be fit for survival in the absence of the fungicide. Resistance problems result in a slow decrease in product performance leading to increased dose rates and/or more frequent applications to achieve the same level of control. There is also evidence of cross-resistance to other sterol inhibiting fungicides. However, in the UK we do not have any other active ingredients from this group approved for use on managed amenity turf at present.

Azoxystrobin comes from a newer category of fungicides called the strobilurins. They are site-specific and affect the production of ATP in the mitochondria (the energy source in cells). This leads to the pathogen being controlled by not having enough energy for growth. The risk for production of resistant isolates is high. In the UK resistance has been found in populations of *Erysiphe graminis* (which causes powdery mildew) on wheat and barley.

See table 1: The fungicides currently available with 'on-label' recommendation for control of diseases in managed amenity turf below.

With all fungicides, applying the same active ingredient continuously in any one year, or over a few years will increase the potential for resistance to occur. Once we have widespread resistance (especially in populations where the resistant isolates are as fit for survival as the sensitive isolates) we have effectively lost that group of fungicides from our armoury. This reduces the number of effective fungicidal active ingredients that we have left. To prevent this occurring the Fungicide Resistance Action Group (FRAG-UK) suggests the following -:

1. Avoid prophylactic treatments (always treat at the first sign of disease rather than preventatively).
2. Avoid repeated applications of fungicides from the same GROUP. For example, do not follow carbendazim with thiophanate-methyl as they affect the same biochemical process and this may encourage resistance to the MBC's.
3. For control of red thread and rusts, make full use of disease resistant varieties.
4. Pay attention to guidelines on labels for maximum dose rates, maximum number of treatments, rotation of fungicidal groups, recommended mixes or approved tank mixes.

Remember that an apparent loss of efficacy of a certain product does not immediately imply field resistance as incorrect identification, incorrect dose rates and inclement weather conditions directly after application may all contribute to ineffective control. By following a good IPM strategy, personalised for your grass type, soil type and conditions, greens may be kept disease free most of the time. However, when the pathogens are winning, the implementation of IPM will also keep the fungicides working effectively, providing the last line of defence.

Dr. Ruth Mann is the Turfgrass and Plant Pathologist at STRI. Ruth and the rest of the STRI team can be contacted on 01274 565131: e-mail info@stri.co.uk; or visit our website www.stri.co.uk

References.

- Anon, 2003. *Turfgrass Seed 2003*. British Society of Plant Breeders and STRI. pp 24
- Couch, H. B. 1995. *Diseases of Turfgrasses*. Krieger Publishing Company, Florida. pp 259-278.

TABLE 1: The fungicides currently available with 'on-label' recommendation for control of diseases in managed amenity turf

Active ingredient	Example product	Group	Single or multi-site action	Topical mode of action *	protective or curative
Chlorothalonil	Daconil turf Fusonil turf	Phthalonitrile	multi	contact	protective
Iprodione	Rovral Green	Dicarboximide	single	localised penetrant	protective and curative
Carbendazim	Turfclear Mascot Systemic Headland Regain	MBC	single	acropetal penetrant	protective and curative
Thiabendazole †	Tecto	MBC	single	acropetal penetrant	protective and curative
Thiophanate-methyl	Mildothane turf	MBC	single	acropetal penetrant	protective and curative
Fenarimol	Rimidin	DMI	single	acropetal penetrant	protective and curative
Azoxystrobin	Heritage	QoI	single	acropetal penetrant	protective and curative

* Topical mode of actions are given as described by Couch (1995).

† Thiabendazole is in its use up period and must be used before 2 February 2004.

A hole lot faster

...15 minutes floor to floor

SHARPER SOLUTIONS...with **BERNHARD**



A sharper cutting cylinder produces healthier,
stronger and more attractive grass...

To find out how Express Dual and Anglemaster,
the world's fastest mower grinders,
dramatically improve your golf course,
cut costs and save time...

Call **01788 811600** today!

BERNHARD AND COMPANY LTD

Rugby England CV22 7DT email: info@bernhard.co.uk

See us at **SALTEX** — Stand **P36**

www.bernhard.co.uk





YOUR LETTERS ARE NEEDED!

Send to: Scott MacCallum, Editor, Greenkeeper International, BIGGA HOUSE, Aldwark, Alne, York YO61 1UF, or email them to: scott@bigga.co.uk

Well Done

Once again another excellent year for the Greenkeepers Support Team, with the additional duties of raking all of the 106 bunkers prior to the start of play, as well as the Greenkeeper going with every match. The team was exemplary in the conduct and manner in which we performed our duties. It was good to see our professionalism in the way that we handled every situation, at times assisting with the scoring staff and making sure that the young adults took drinks at regular intervals, due to the high temperatures.

It was ever more pleasing as all the Greenkeepers turned up well in advance of their allotted time for their game, this is why we are so professional in the way we conducted our duties.

I also feel that we are getting the message across that we are professional Greenkeepers and not just rake men or bunker rakers as we have been referred to in the past.

I would also like to thank all the members of the team who gave up their time to attend and a great thanks to Bert (Cross) and Peter (Boyd) who were in the greenkeepers cabin and the staff in the marquee; John (Pemberton), Scott (MacCallum), Tony (Cocker) and Brad (Anderson). A special thanks must go to the drivers; Mike (Gash), Richard (Saunders) Alan (Halfyear) and Robert (Hogarth). Once again, thank you for making my job so easy. I would also like to thank Derek (Farrington) for allowing me a break on the 1st tee.

Of all the four days, I only ever managed to see Tiger Woods tee off once, that was because all the marshals and media people somehow always managed to get in front of me, but I did see him hit his second ball on the first day, with only about three people in front of me. This is my claim to fame!

Ian Holoran
Middlesbrough Municipal GC

Message of Thanks

I just wanted to write and thank greenkeepers, staff and colleagues for the overwhelming support and encouragement Elaine and I have received during my current illness. If I ever needed evidence that greenkeeping is indeed a truly international profession and community then I now have it in abundance.

BIGGA is blessed with a conscientious and committed staff and I urge all members to give them as much support as possible during what is a difficult period for them at BIGGA HOUSE. You as members have a fine association which continues to advance on many fronts. BIGGA is a great source of pride and joy to me particularly at a time when I can reflect on its progress since 1987. Many thanks to you all once again.

Neil Thomas
Executive Director, BIGGA

Letters continued on page 37

Due to the growth of the BTME & ClubHouse Exhibition, plus changes in booking conditions with major hotels in Harrogate, BIGGA has chosen Reservation Highway as its official accommodation booking agency for Harrogate, in January 2004.

All hotel bookings can be made through the Reservation Highway web site: www.reservation-highway.co.uk or by telephoning them on: 01423 525577.

Reserve the hotel room of your choice by booking early and get the best deal.

Remember, that accommodation for Continue to Learn or the BTME & ClubHouse Exhibition cannot be booked through BIGGA.

Non-residential delegate bookings for the National Education Conference, Workshops, BTME & ClubHouse Seminars and the Exhibitions Banquet should be booked through BIGGA HOUSE using the Continue to Learn Booking Form that will be mailed with the October Edition of Greenkeeper International.



WE OFFER A COMPREHENSIVE AND FREE HOTEL BOOKING SERVICE FOR BTME & CLUBHOUSE 2004

BOOK EARLY – to get the lowest prices

CONTACT US NOW to receive a full list of all hotels and guesthouses available, with special rates, for BTME & CLUBHOUSE 2004

TEL: 01423 525577

FAX : 01423 525599

EMAIL : admin@reservation-highway.co.uk

OR BOOK ON-LINE

view all the hotels and place your booking - with immediate confirmation.

**Visit: www.reservation-highway.co.uk
Access code "bigga" (lowercase)**

Wells House 8 Cold Bath Road Harrogate HG2 0NA



Bringing quality to play

Say hello to Heritage and goodbye to Fusarium!

*Heritage moves
outwards and
upwards within
the leaf blade.*

*Heritage stops the
spread of disease
that exists prior
to spraying.*

*Heritage is absorbed
readily into the leaf and
moves both systemically
and translaminarily.*

*Lasting residual activity
keeps Heritage working
longer.*

*Heritage moves
into emerging leaves
that were not present
during the initial
application.*

*Heritage protects against
fungi invasion by inhibiting
spore germination, disease
penetration and sporulation.*

*Turf roots absorb
Heritage and move it
throughout the plant.*

The only turf fungicide with a new biochemical mode of action that will take all your Fusarium problems away.

- Contact action with systemic and translaminar movement
- Proven and unparalleled preventative and early curative action
- Highly effective and environmentally sound chemistry
- Enters turfgrass through the leaf, stem and root system
- Low recommended rates of use with unique mode of action
- Low risk environmental and toxicological profile
- For use on all grass species

**Heritage**[®]
Fungicide

Designed by nature and perfected by chemistry

Scotts UK Professional, Paper Mill Lane, Bramford, Ipswich, Suffolk IP8 4BZ Tel: 01473 830492 Fax: 01473 830386
www.scottspprofessional.co.uk

Heritage[®] and the Syngenta logo are Trade Marks of a Syngenta Group Company.
Heritage[®] contains Azoxystrobin. ALWAYS READ THE LABEL-USE PESTICIDES SAFELY.

PROBLEMS OLD AND PROBLEMS NEW

Kate Entwistle casts her eye over the diseases which are currently affecting golf courses.

Damage to the turf that is caused directly by invertebrate or fungal pests, will noticeably affect either the colour or the growth habit of the plants in the sward and in some cases, both. Regardless of the cause, the specific way in which the sward is affected will depend on the interaction of several factors, including the type of grass in the sward, the invertebrate pest or fungus that is causing the damage, the way in which the sward is maintained (e.g. nutrient levels in the plant, height of cut) and the prevailing weather conditions.

Recognising the possible causes for a given symptom is a crucial first step in identifying any turf problem. For example, if the sward is showing patches of red/brown discoloured plants, it could be that individual lesions from a leaf spot disease are coalescing along the leaf blade and affecting the general appearance of the sward in discrete patches or alternatively, it could be that the plants are showing a general overall leaf discoloration due to nutrient or temperature stress. If lesions are present on the leaf, it is possible that a certain *Drechslera* species of fungus is the cause of the symptom. These symptoms, however, would rule out a disease such as take-all patch that does cause quite obvious leaf red/brown discoloration but will not cause lesions to develop on the lamina.

It must always be borne in mind that finding a fungus on a plant or finding an invertebrate in the rootzone does not necessarily mean that either are causing detriment to the turf. Many fungi can be identified on perfectly healthy swards and in a healthy rootzone, the number of microorganisms will be incalculable. Their relative population levels will fluctuate during the year with both the environmental conditions and the vigour of the sward. Thus, identifying the cause of a specific problem means completing both an investigation in to the development of the symptoms and an analysis to identify the presence of the causal organism. If certain invertebrate or fungal problems have been identified on your course in the past, it is likely that they will reoccur and that you will be able to recognise them as such because their symptoms will be similar to those of the initial outbreak. Difficulties arise when either the initial outbreak was not identified correctly or when problems with similar symptoms but very different causes occur on the same area of turf.

A 42% CHANCE OF DISEASE.

Almost all the samples that I analyse are sent to me requesting an identification of the fungal disease that is causing damage to the sward. However, over the past seven months, only 42% of the samples that I have analysed in the laboratory had damage that was actually caused directly by a fungus. Twenty three percent of samples had symptoms caused by invertebrates (either frit fly or nematodes) and 35% had symptoms caused by environmental factors/rootzone conditions (physiological effects) and were in no way caused by an invertebrate or a fungal pest. It may come as a surprise to you that well over half of all samples analysed for turfgrass disease have no fungal disease problem. This clearly highlights the difficulty in making a correct diagnosis based purely on the symptoms of the sward – however convincing the symptoms may be.

With regard to fungal diseases, the fungus responsible will only cause noticeable damage if a suitable host (turfgrass sward) is present and environmental conditions prevail that allow the fungus to start infection. The

severity of the damage is in part dependent on the length of time that the favourable environmental conditions prevail. Many diseases occur at non-damaging levels for much of the time and it is only when conditions allow the fungus to reach its maximum potential with regard to causing damage, that disease development 'explodes'. Disease is inevitable and invertebrate pests can be a reoccurring nightmare. If we know what is present and when these potential problems are likely to cause damage, we can work towards limiting the severity of the problem on the most important parts of the course.

But what of those symptoms that were mistakenly thought to have been disease? Why were they confused with a fungal infection?

WHEN IS A DISEASE NOT A DISEASE?

I have received numerous turf samples this year where the bentgrass in a mixed bent/fescue/annual meadowgrass sward had become discoloured and died out and where eventually, extensive bare areas had developed (Figure 1).



Figure 1: Bentgrass/fescue/annual meadowgrass sward showing symptoms of damage

In most cases, annual meadowgrass had tended to grow over the affected and thinned swards leaving them with an uneven and patchy appearance. In all cases, previous fungicide applications had shown no improvement in the overall condition of the sward. Analysis of all these samples showed the same result – in the areas where the symptoms were continuing to develop, there was no primary fungal disease causing the problem. This was a surprise to many of the turf mangers and agronomists who had sent the samples in, since the initial discoloration of the bentgrass in the sward, it's eventual death and the re-colonisation of the affected 'patches' of turf with annual meadowgrass, suggested take-all patch disease (though I'm not sure which fungicides had been applied during the early part of the year to manage that!). In fact, all of the samples were heavily infected with frit flies and their pupae were removed in great numbers from the dying bentgrass plants (Figure 2).



Figure 2: Frit fly infested bentgrass plant

These were not the only instances of invertebrates causing symptoms on the turf that resembled fungal disease. In previous articles I have written at length about the root knot nematode (*Meloidogyne* sp.) that I found to be causing yellow patches annually, between May and November, on creeping bentgrass greens across the UK and Ireland (Greenkeeper International, February & March, 2003). I was initially asked to help identify the cause of these yellow patches by Mark Hunt (Headland Amenity) at the end of 2000 and since then, I have received numerous turf samples in which this nematode is causing these quite dramatic symptoms. Since its initial identification as the cause of the problem, this nematode has been confirmed as a new species of root knot nematode, not previously known or described. It has now been named as *Meloidogyne minor* n. sp. (new species) and its complete and formal description will hopefully be published later this year in a nematology journal. It is important that this nematode has been identified and recognised as the cause of this problem since it has long been suggested that nematodes don't cause major turf problems on cool season grasses. Although we are now certain that nematodes can cause detrimental effects on all turfgrasses, we still have a lot to learn about these specific invertebrates and what makes them infect turf. This poses great problems for us with regard to management of both the *Meloidogyne minor* n. sp. and the many other types of nematode that damage turf.

PROBLEMS NEW...

Accurate identification of the cause of a problem is a huge step towards its long-term management and, when unusual or uncommon problems come in to the laboratory, there is a sense of excitement just before the realisation kicks in that 'now we know the cause of the damage, we have to find a way to manage it'. During July, I received two separate turf samples which both

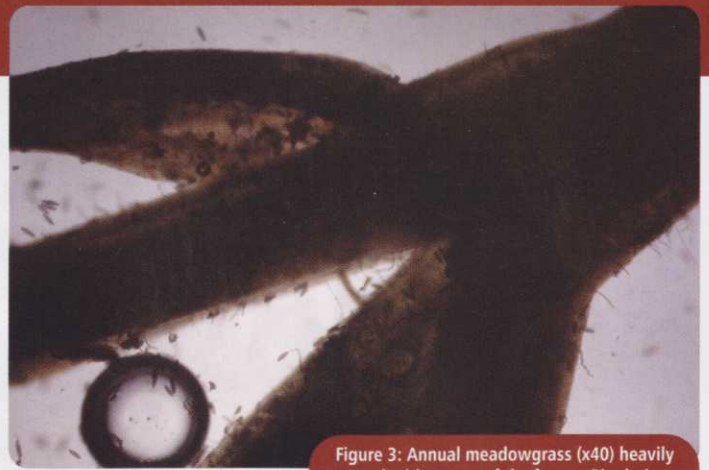


Figure 3: Annual meadowgrass (x40) heavily covered with spores of the fungus *Bipolaris* sp.



Figure 4: Germinating *Bipolaris* sp. spore (magnified 400x)

proved to be very interesting (yours and my definitions of the word 'interesting' may differ slightly here!) with regard to the cause of the damage to the sward. The first sample, received from Ireland, was a hole-cutter piece of a putting green that had a predominantly annual meadowgrass sward. The individual plants in the affected area appeared dark brown, almost black and watersoaked with occasional evidence of lesions or spots on the leaves. The problem had developed as one or two, 12-15 cm diameter patches which over the course of a few weeks had spread to total around 10 patches. There was an apparent increase in the severity and extent of these patches when the weather became hot and dry. During this time, the greens were irrigated to help relieve moisture stress. Although this problem started on only one green, since the initial patch had been noticed four weeks prior to the sample being taken, the patches were starting to show on other greens. The overwhelming presence of fungal spores on the sample, combined with the description of the disease development and weather conditions confirmed that the disease was being caused by a *Bipolaris* species of fungus. Figures 3 and 4 show the profusion of fungal spores present on an affected annual meadowgrass plant and a close-up of a fungal spore that is germinating at both ends. In addition, a fungal spore was inoculated on to artificial culture medium to show its mycelial growth and allow complete identification of the fungus (figure 5).

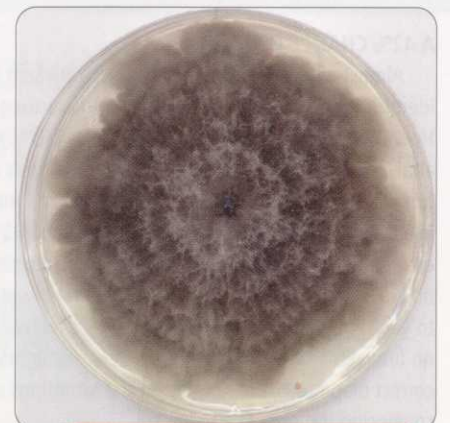


Figure 5: Mycelium of the *Bipolaris* sp., isolated and growing on artificial culture medium

The second uncommon turf problem came in during mid July. The information that was sent with the turf sample described the problem as looking like fusarium patch but not having the same characteristics that are normally associated with that disease. The green had been maintained under a 'lean fertiliser programme' and maintained so as to produce a consistently fast surface. The other notable comment regarding the disease was that it 'has spread rapidly across the whole green'. To me, the symptoms were alarming: watersoaked plants developing in small (2 cm diameter) spots that were coalescing and rapidly spreading across a 'lean' and very stressed annual meadowgrass sward, without any evidence of aerial mycelium (figure 6).

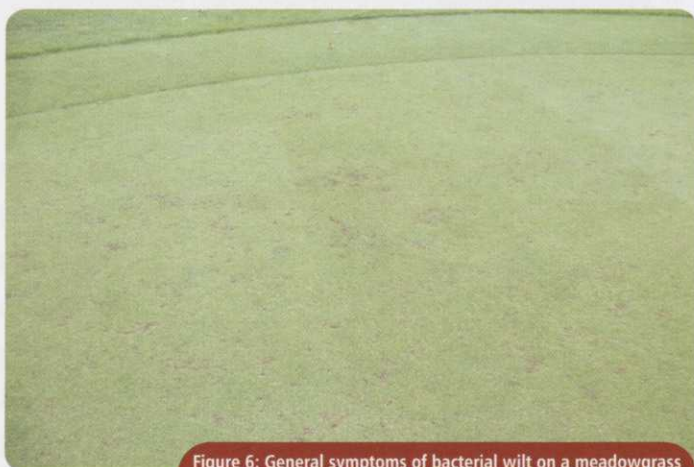


Figure 6: General symptoms of bacterial wilt on a meadowgrass sward (courtesy of Mark Hunt, Headland Amenity)

Analysis of the turf sample identified the problem as bacterial wilt. The evidence of the infection was extremely conclusive and the bacteria could be seen streaming (or pouring) out of the xylem vessels of affected plants (figure 7). A close-up analysis of some of the infected plants also showed the characteristic leaf discoloration and deformity as recorded for bacterial wilt in annual meadowgrass.

Although these two disease problems are well documented, they are certainly not commonly seen in our climate. Our knowledge of current invertebrate pests and diseases is based purely on evidence gathered from analyses completed, but it is possible that these fungi and bacteria are more common and more widespread than we imagine. There is no way of really knowing a problem exists until it is recorded during an analysis but when unusual problems are 'found', I believe that they should be reported so that we can all learn more about the potential problems that can affect our turf.

Dr Kate Entwistle, The Turf Disease Centre, Waverley Cottage,
Sherfield Road, Bramley, Hampshire RG26 5AG. UK Tel: 01256 880246

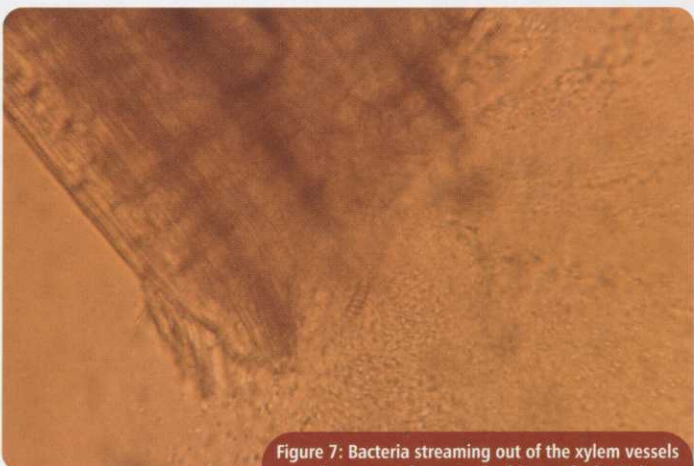


Figure 7: Bacteria streaming out of the xylem vessels of a cut meadowgrass leaf (magnified 400x)



multigreen

CONTROLLED RELEASE FERTILISERS

- 5-6 month OR now, new 3 month response from a single application
- Different prill sizes for fine, close mown and coarse turf
- Nutrients released by temperature alone - unaffected by increased rainfall
- Less clippings and increased root growth compared to other treatments
- Sulphur free, high potassium formulations for stronger, harder turf
- Use as a 'Base Feed'* on fine turf to provide consistent, reliable response

Manufactured by



Developed & Distributed in the UK and Ireland by



*For more information on base feed fertiliser programs, or for a copy of the Multigreen Brochure, contact Headland on 01223 597834 or e-mail: info@headlandamenity.com Website: www.headlandamenity.com

Ground Force



Ranging from 21 - 102hp
McCormick tractors are a force to be reckoned with.
For grounds care, nurseries, greenhouses, vineyards, orchards, grassland and municipality work, our range covers every application.

From the small but multi-talented G25 mini tractor to the powerful, all-round capability of the CX, we offer individual solutions to meet individual needs. All our tractors are designed with the driver in mind. Supreme versatility is a feature of every model. So too is outstanding productivity throughout the year.

Shouldn't you be joining forces with your McCormick dealer?

RSM Beare Exeter	01392 841322
RC Boreham & Company Chelmsford	01245 231320
Burgess Chester (covering the North West and North Wales)	01244 881331
Burgess Shrewsbury	01743 235046
Burgess Barton Under Needwood	01283 711622
Burgess Bakewell	01629 812568
Burgess Banbury	01295 253671
Chichester Tractors Chichester	01243 531298
Collins Services Pontrilas	01981 240681
David Evans Machinery Llancarfan	01446 781711
James Green Farm Machinery Studley	01527 857857
Harper & Eede Hurstpierpoint	01273 832331
Johnson Bros (Fakenham) Ltd Fakenham	01328 863812
K&M Mowers Brough	01482 667004
Olivers Kings Langley	01923 265211
PJS (Ag Services) Ltd Hungerford	01488 648685
JE Rees & Sons Llandysul	01559 370601
Rickerby Ltd Hexham	01434 604131
Rickerby Ltd Carlisle	01228 527521
Stalham Engineering Co Ltd Stalham	01692 580513
Suffolk Agri Centre Pakenham	01359 232155
Thornycroft (1862) Ltd Huntingdon	01480 891642/3
Truro Farm Machinery Truro	01872 278471
Uphill & Son Ltd Somerset	01761 241270
RH Young Kirknewton	01506 880413

Whatever the size -
we can cover all
your grounds care needs


McCORMICK

Brochure Hotline: 01302 328323

McCormick Tractors International Ltd.,
Wheatley Hall Road, Doncaster DN2 4PG, South Yorkshire.
www.mccormick-intl.com



A member of the ARGO Group

YOUR LETTERS ARE NEEDED!

Send to: Scott MacCallum, Editor, Greenkeeper International, BIGGA HOUSE, Aldwark, Alne, York YO61 1UF, or email them to: scott@bigga.co.uk

Where are the Letters?

To follow up Chris Haspell who so eloquently wrote in the magazine (March issue) about "Fescue", I sit here wondering if he and I are mad as there seems to have been a dearth of letters in backing up his thoughts. I hope this helps start a trend.

Chris expressed opinions on how many speakers at conferences are out of touch with the world we live in. I have to say I can only back this up. The speakers are without doubt extremely well educated and experienced and can rarely be faulted with their knowledge over subject matter, but, this does often seem to be a little bit out of this world. We know it isn't, but they rarely talk about the world I know about.

Chris talked about greens he had managed and over a seven year period changed them over from 100% poa to dominant bent and fescue. I have seen these greens after five years of good management practices and can say he is a little modest with his time scale. I can also back up his claims regarding the pay and play course in Copenhagen.

This is all very well but many courses do not have such a good starting point and conditions to advance this management with the same success. I am a great advocate of cultural techniques and the management of golf courses without over use of chemicals, fertilisers or water. I know it can be done as I worked at Elmwood golf course for nearly four years as Deputy Course Manager and Head Greenkeeper and never came close to resorting to fungicides. The greens there had some areas sprayed using a knapsack sprayer, once, during grow-in and to this day, I am sure will not have had any other fungicides used.

Elmwood had the benefit of well-constructed Suspended water table greens and has good air movement and was seeded with good cultivars of bent and fescue. This is all a great help. You still get disease starting but with other good management practices and careful use of irrigation and fertiliser, the disease is kept under control.

Like Chris I also have been working in Denmark, three years now, but in a different part of the country. My Danish friends inform me that the east side of Denmark where Chris works has a drier climate than the area that I have been working in. This is backed up by an article Ian Tomlinson, who works in the Copenhagen area (east side), wrote around a year ago referring to an extremely dry winter in Denmark. Where I worked during the same winter we had a September, October and November with the highest records of rain for those months ever recorded with the September rainfall being the wettest month ever in this area ie. 210mm. Then last summer this was surpassed by July with 220mm of rain. I live and work in an area with an average, supposedly, of 750mm/year. "Isn't weather unpredictable?"

Like I say I still try, we have to! as we are not allowed chemicals. I have been trying to improve the health and vigour of my grass and soil over the last two and a half years by dramatically dropping fertiliser and water levels together with a lot of aeration work, removal of thatch and replacement of poor root-zone with high performing topdressings. Last year I overseeded four times and had great success during the summer but found that it is difficult to sustain the better grasses, not surprising but over time this, I am sure, will change if my successor continues with the programme.

Drier summers where irrigation is controlled gradually to put more stress on the poa and move towards more preferable conditions for fescue/bent I feel will eventually turn the tide. I have installed a new irrigation system that allows me to sequentially water my greens heavily in one night and let them dry out a little for a day or two. Having said this and being positive is not necessarily the way to go, though. This process may take many years and requires other major works, cutting trees, and spending many hours keeping green surfaces dry with

switching/brushing, to mention only a couple of things. Is it worth it? The answer is emphatically, your decision! If it is yes what will your golfers say? Constant disruption to the putting surface, stressed poa sending up seed heads more vigorously, more healthy grass and firmer greens, that's for sure.

I have heard greenkeepers saying, "The only thing you can do if there is a chemical ban is dig up your greens and start again". I do not agree with this but it is true for many who are in a similar position as I have been.

Some can go down the route of gradually changing their grass sward, like Chris, and this has to be commended. Providing the conditions allow you to do this! Some will have to go the whole hog and rebuild and reseed, then manage greens effectively to keep poa stressed and in check.

It follows from this that fescue/bent is the way to go. If you go down the route of creeping bent, poa will come in a few short years if you are in a cold damp climate. Not a big deal if you have finances to strip off and reseed your greens every five years and manage your greens intensively. I do not have a problem with courses having creeping bent greens with high inputs of water and fertiliser and I am not even too stressed out by the use of chemicals on these greens. They do however cost more money to manage and with chemical bans you might be pushing your luck. However if the money is there, fine!

Jim Arthur criticised St Andrews Bay for not being traditional and others fear golf courses becoming "Americanised" I also fear this but I also feel that there is a place for all types of golf courses which require differing management techniques, so long as they can survive with more and more restrictions being put on them.

I was lucky enough to travel to Atlanta in February with Bernhard's and BIGGA and had a number of conversations with Superintendents from all over the US. The recurring theme was minimal interference with the playing surface, high inputs 10 times my budget for private courses and five times my budget even on pay-and-play, high staff levels of cheap labour, 18 to 30 for 18 holes and greens being torn up every four-six years. I also noted during a forum the Bernhard's group had with a delegation of Atlanta Superintendents that they were surprised at our experiences and techniques and how was it possible to maintain golf courses with so little money? I think we and our Association should be much more proactive to inform US superintendents about what we do and try to influence their management practices rather than lying down and expecting things in our continent to go the same way as the US. One note of comfort was that they also have the Augusta factor driving them mad with member's expectations.

My scribbles come to the bare facts that, we must maintain our courses in a more prudent and friendly manner with low inputs or be prepared for high costs and potential crippling disease. I am of course saying nothing new but this message has got to be put over to the golfer, your members! Our Association should be leading the way with this.

Chris asked those who agree with him to stand up and be counted, "I am" with a couple of "buts". He also talked about those older greenkeepers who have valuable knowledge with regard to bent/fescue maintenance; we have to get this knowledge transfer, as we all have much we can learn. I suggest you go back to the March issue of Greenkeeper International and read Chris's article again.

I would, very much, welcome responses to this article. especially from those greenkeepers with the knowledge to get the best from fescue/bent with cultural practices. Email Colin@topgrass.co.uk

Colin Mackay

Top-Grass Ltd, Turf Advisory Services

Managing a Golf Course

Duncan McGilvray concludes his five part series detailing duties of the modern day Course Manager Communication

To communicate effectively at every level will ensure you succeed in all aspects of golf course management. A bold statement, but one I believe, as in all my discussions with colleagues with perceived serious professional problems, the reason for those problems can be attributed to poor communication, whether at basic level - ensuring staff know what to do and when to do it, to the highest level - ensuring officials and members of the club, who ultimately decide whether to allow us to manage their golf course, understand what we are trying to achieve.

In the preceding four articles I stated how extremely important each area of management is - this area should be regarded as the link between all the other areas and therefore by far the most important.

Some employers may omit to state communication skills in advertisements for Course Managers but we, as Course Managers, should accept its importance and work extremely hard to get it right or "others", who do not have the skills to do the job but can communicate well, will oversee our profession.

The most observant of my colleagues may remember similarities in each of my previous articles to those of seven years ago, but this last article is vastly different for two main reasons.

1. Rapid technological advances.
2. The increasing importance of personal presentation in the job we do.

I will therefore list briefly the areas of communication required and concentrate on these two areas in more detail during the course of this final article.

AREAS OF COMMUNICATION

It is safe to say that golf clubs have many different sections within the total membership where communication between sections is not good - club officials and well meaning members will endeavour to improve this because it is good for the club as a whole (ladies v gents/mixed matches, juniors v seniors, high v low handicaps, artisans v directors etc.) but we mostly play and therefore communicate within our own individual sections - probably because we feel more comfortable within our own perceived abilities and kind.

This of course makes our task much more difficult because to effectively communicate we must aim to get to all sections of the club no matter how small - even the 3/4 ball who start out extremely early in the morning and never go into the clubhouse, or the small percentage of committee members who may get voted on to committees, but seldom attend meetings.

The Course Manager must therefore cover all the following areas of communication to ensure accurate information on course matters is available to all members of the club.

OFFICIAL COMMUNICATION

- Attending committee meetings.
- Publishing and distributing the club's agreed Golf Course Policy Document.
- Attending management meetings with the Club Manager and other department heads.
- Club Manager and Course Manager regular dialogue - formal/informal.

DIRECT WRITTEN COMMUNICATION

- Monthly course reports.
- Major project proposals.
- Renovation work proposals.
- Internal magazine/newsheet articles.
- Distribution of important up-to-the-minute information on course activities.

DIRECT GENERAL INFORMATION

- Presentation to members in large/small groups, sections, the morning medal players etc., in both formal and informal ways.

- Question and answer sessions - the course manager learns a great deal from these types of gatherings - not easy but again necessary!

GENERAL COMMUNICATION

- Golf course notice board - your own (not shared) in a prominent place in the clubhouse.
- CDs, Videos both professional and home made on relevant issues.

PUBLIC RELATIONS/SEMI-SOCIAL COMMUNICATION

- Staff match/es with sections of the club.
- Workshop visit - cheese and wine and machinery costs/staff importance.
- Course Manager lunch in clubhouse with members periodically and golf with certain members who require more involved information on course matters.
- Play in the occasional medal - but you cannot win it!
- Be on the course when that early 3/4 ball plays and give general information on what is done on their behalf.
- Call in to the clubhouse at the weekend occasionally just as the members are coming off the course - I didn't say it was easy!

I do not believe it is the job of a club official to write articles on subjects regarding golf course management/work programme up-dates/course information etc, or stand as a barrier between the Course Manager and the membership.

In golf clubs where this happens - with all good intentions I hasten to add - the Course Manager becomes isolated from the membership and therefore communication lines are no where near as good as they should be.

It has been explained to me in some cases that officials do this to "protect" or "cushion" the Course Manager from difficult situations and criticisms - this is not good policy - something will give eventually - the Course Manager must be aware of the membership's concerns and answer those concerns by communicating effectively.

The Course Manager is the expert in golf course matters and should be trained to communicate and deal with difficult situations.

TECHNOLOGY

As previously stated this area has improved so much over recent years that we now have an incredibly useful tool in which to communicate quickly and effectively with officials as well as the general membership.

- The course notice board can be updated frequently with up to the minute digital photos of areas on the course to back up your short text information.
- You can e-mail the membership before they arrive at the club on relevant issues/information - particularly helpful in April when Augusta is on television and golfers' expectations are high but temperatures are low!
- Digital photos can be e-mailed, used in the newsheet, on the website etc.
- Presentations to committees and the membership are made much easier to explain using computerised presentation packages at a fraction of the cost of old style slides.
- International as well as national websites can be visited where information can be found and used to back up your own reasoning and observations.

PERSONAL PRESENTATION

As I stated at the very beginning of this final article this area of management is vital to carrying out the job successfully and is not for giving presentations to conferences - that would be a bonus.

Successful personal presentation I am now convinced is what makes the difference between success and failure - being in control of the course and your own destiny.

The Course Manager must present himself/herself appropriately and manage situations in all the following areas

- One to one staff appraisals/assessments/setting goals/monitoring progress.
- Staff group discussions and "brain storming" sessions.
- Sub-committee meetings/presentations.
- Board meetings/presentations.
- Members meetings/presentations.
- Question and answer sessions.
- Attending official/semi-social functions - lunches. Lady Captain's/Captain's day etc.

At a recent meeting of some of our top Course Managers in the profession the question was asked, "What one skill do we believe is essential in succeeding as Course Managers?" The resounding, unanimous reply was, "The ability to present oneself appropriately, confidently and succinctly to the powers within our golf clubs." Thus ensuring the course gets the required resources for continuous improvement.

So forget about this type of training being for those of us who choose to stand up at conferences - this skill will ensure you are successful in getting over your point of view and therefore allow you to manage the golf course effectively.

HEALTH AND SAFETY

This is a vast area and a sometimes rather frightening one and I cannot possibly cover all the requirements/legislation in the space available.

The best advice I can give is not to be fearful of the prospect of "getting your house in order" - if we are fearful we delay, and matters just get more frightening.

The HSE do not want to prosecute anyone following a dangerous incident - they want to reduce the risk of that happening in the first place.

If you do not have a Health and Safety Policy Document in place do so as soon as possible - once you get started it is not nearly as difficult as it seems.

This document is often bought "off the shelf" and then put on the club's shelf seldom to be seen again - until something nasty happens and the club find that the document is not adequate for the purpose - it is then too late!

You can produce this document yourself within the club with the help of HSE guidelines but some may find this too daunting - if you want a safety company to help make sure of the following criteria:-

- Ensure it is a specialised company dealing with golf and golf courses.
- Ask for references of previous clients and follow them up.
- The company must work with you to develop the document not do it for you.
- The company must involve not only the Club Manager and Course Manager but all the department heads, staff, and club officials in the formulation of the document.
- The company should explain right at the start that the document is "live" and that the department heads must be capable of up dating the document regularly.

IN CONCLUSION

Over the past few years I have been fortunate to be in places where I have had the opportunity to speak to some fairly high ranking officials within private members' golf clubs - the clear message I get is that they want their Course Managers to manage, which is exactly what I and my like minded colleagues would like to see.

Some of my colleagues are however reluctant to take on the responsibility, particularly in the areas of budget, communication and personal presentation.

I therefore take this opportunity in stating that if this attitude continues I am convinced the profession of Golf Course Management will not survive and what remains will be controlled by "others" with little or no knowledge of the work involved, but are able to communicate and present well.

This will in turn seriously affect the general condition of our golf courses in future (if it has not done so already).

I therefore make an impassioned plea to all Course Managers and aspirant Course Managers to seek out personal presentation and communication training - you will not regret it - we will then go from strength to strength, and ultimately gain the recognition that our profession deserves.

The decision rests with us.

We test where others guess



Don't gamble with your top dressing

Is your top dressing compatible with your rootzone? We can take the guesswork out of choosing the right top dressing by taking core samples from your existing profile and analysing them at our laboratory. Using our custom designed software we can then identify the most suitable top dressing for your green.

**Rufford**
sports surface technology

To find out more call us on 01270 752777 or visit our website at www.rufford.com

NEW PRODUCTS

SPRAY AWAY

The first new spray nozzle from Hypro - known as Lurmark prior to 1 June 2003 - was launched recently.

Sporting the Hypro logo, the new nozzle is the latest addition to a seven-strong range of specialist long-throw nozzles which are designed for applications where a conventional boom sprayer cannot be used easily, or at all, due to natural or man-made obstacles.

Known as the XT 010, the nozzle throws an even fan spray over a distance of 3.66m at a pressure of 3 bar (44psi). At this pressure, the nozzle delivers 3.9 litres/min, making it particularly suitable for mounting singly or in pairs, back-to-back, at the rear of an ATV, quad bike or specialist adapted 4x4 vehicle.

The XT nozzle's stepped-slot design creates medium to large droplets ensuring minimal risk of drift across a pressure range from 2 to 5 bar (29 - 72psi) and at flow rates from 3.3 to 5.1 litres/min. For optimum pattern formation and swath width, the nozzle should be mounted 1.22m (48in) above ground level with the spray delivery orifice positioned horizontally. To better target the spray, the nozzle can be angled up or down, but this will affect swath width and spray pattern.

Recommended retail price of the new Hypro XT 010 long-throw nozzle is £99.99.

For further information Tel: 01954 260097



FAST WORKER

Accelerated Compost's 'Rocket' Range of Compost Machines have been specially designed and developed in the UK for domestic and small scale industrial use. The Rocket can take food, paper and garden waste and turn it into compost within 14 days.

The Rocket is fully automatic, portable, labour saving and a continuous process machine. In brief, waste is fed into the hopper where the machine then controls the: moisture content, temperature and aerates the mass. The four stages of biological degradation then take place - the end result being - a proven high quality compost that you have made yourself! Temperatures over 60°C can be reached and held to ensure pathogen, slug eggs and weed seed destruction, and enable compliance with the current DEFRA regulations for composting food waste containing meat.

Visit www.quickcompost.co.uk for further details or contact us on 0870 240 7313.



A TECHNOLOGICAL TRIUMPH

A tool that can make integrated turf management actually work in practice. Everyone talks about ITM, most know the theory, but making it happen is another matter. Now Scotts are launching the answer - Scotts iTurf system.

iTurf is a technological triumph; a system that will measure everything that can potentially have an effect on turf growth and turf health, and then collate and present the information so that the turf manager can make the right cultural decisions.

One of the key features of the system is a 'disease prediction' programme that, having processed all the data, will alert greenkeepers and groundsman to the likelihood of disease infestation before it does any damage.

The Scotts iTurf comprises a series of stations and sensors, linked to a computer, that constantly monitors air and soil temperature, solar radiation, humidity, wind speed, leafwetness, soil moisture, rainfall etc right across the site. This is exactly the kind of detail that the ITM practitioner requires at his fingertips, making the iTurf an essential piece of equipment for all turf managers who are interested in managing their turf in an environmentally friendly way. And, of course, enjoying the cost savings that will accrue from this form of precision management.

The Scotts iTurf will cost £2,500 to purchase and set up.

For further information Tel: 01473 830492



IT SUCKS!

The development of a 2.5m suction head for Turfmech's TM5 high-tip vacuum collection was prompted primarily by demand from turf growers needing to collect and remove grass clippings from newly-mown turf. Apart from the cosmetic factor, leaving the clippings in place, especially during periods of warm, damp weather, can lead to potential disease problems and unsightly yellowing of the valuable grass beneath.

Turfmech believes that the enhanced collection ability and higher workrate provided by the 2.5m head will appeal to groundstaff, contractors and all others needing to pick-up and remove surface debris quickly and cleanly from public and private parks, sports stadiums, race tracks and similar expansive areas.

Fully height-adjustable, the new 2.5m suction head is equipped with a full-width powered debris-loosening brush, of similar design to its narrower stablemate. The combination of agitation brush and powerful suction makes the TM5 ideal for the collection of leaves, litter, grass clippings and other light, loose, damp or dry debris from turf or hard surfaces.

For further information Tel: 01889 271503



SCOTTISH REGION
Peter Boyd
Tel/Fax: 0141 616 3440

Ayrshire

Hope you are all happy and enjoying the fine weather of late. As you read this most will be aware that the Autumn Meeting is being played at Beith GC on Tuesday, September 16. Hope to see as good a turn out as last year.

Derek Wilson found himself a member of the winning team at the recent Harry Diamond Memorial Quaich (pronounced "quake" as I was reliably informed amid a chuckle or two). I am sure all involved at Belleisle had a lovely day.

Turnberry had a busy and exciting few weeks with the Senior British Open played over the Ailsa course, and the Kintyre hosted one of the two qualifying rounds. What a thrill to see the greatest golfers of modern times competing in such a friendly manner.

The weather was perfect for the championship although Monday was a different story. After setting the courses up for practice most went for breakfast, no sooner had the butter hit the toast than the monsoon started! Half an hour later both courses were flooded and the bunkers washed out! Fortunately the rain abated after a couple of hours and by the end of the day you wouldn't have known it had rained at all, apart from the fact there were some very sodden greenkeepers. Ah, the joys of the Scottish weather!

Next summer will be another good year for Ayrshire golf with the Open at Royal Troon while Irvine Bogside, Glasgow Gailes, Western Gailes and the Kintyre will host the qualifying rounds.

Till next time!

Dennis Tweddell



West of Scotland

Yes it's back. After a couple of months leave, the monthly Section news is here! I'm afraid lack of information is blamed for no articles for the past couple of months - you were all away on your summer holiday anyway, who needs to go on holiday with the fine weather we're having lately.

Competition: Harry Diamond Memorial Trophy

Venue: Ayr Belleisle Golf Club

Date: 13.7.03

A small team were selected to represent the West Section which included Brian Bolland, Gerry Bruen and myself. Blessed with fine sunshine the course was in excellent condition for this event and credit goes to the Ayr Belleisle greenkeeping team for their efforts.

A special mention to Brian Bolland who picked up a team prize on the day, unfortunately it was the booby prize. Keep practising Brian.

To Harry's wife, Jessie, family and officials congratulations on making the event such a success, I'm sure Harry would be very proud of how the day's events and golf course turned out.

The day is nigh!

October 8, Autumn outing at Cathkin Braes Golf Club. Hope you all have been practising! Hopefully you can break away from your busy schedules to have an enjoyable, relaxing day blessed with continued sunshine.

Post your entries in as soon as possible please, remember on the day you can leave your deposit or pay in full for your ticket to the annual dinner at Victoria's Night Club.

Remember! Cathkin Braes Autumn Outing, Don't miss it! Any information contact me on Tel: 0141 644 5783 Mobile: 07774 420427

Douglas McIntosh

NORTHERN REGION

North East

Congratulations are in order for Head Greenkeeper Tony McLure and his team as they were the winners in the North East John Deere Competition at Morpeth GC recently. Since then its been brought to my attention that they have since qualified at The Belfry to represent John Deere in the States later in the year, hope you all do well and enjoy the experience.

Come on lads let's have some news to put in the Section Report. I'm sure some of you will be moaning on as nothing has appeared for a while. I can't put anything in if I don't have the info.

Jimmy Richardson



North Wales

I start this month's notes with a tale from one of our long standing members, who shall remain nameless. He was in his car on his way back from the island of Anglesey on the A55 road and was doing about 60 plus as he entered the 50mph bit after Conwy going through Llandudno junction. He noticed in his rear view mirror a dark blue Volvo estate car coming up from behind he stayed in the nearside lane still at over 60mph and waited for the Volvo to pass. However it stayed just behind him and was in his blind spot for the next 500yds, so he decided to put his foot down a bit to crack on home. He got up to just before 80mph and the Volvo was still behind and still in his blind spot, it wasn't until he had covered a further 500yds still motoring on that the Volvo decided to overtake and, yes you guessed it, it was full of police officers. As the colour rushed out of his cheeks and he slumped very humble into the seat, he looked across and saw one of the lady officers, with cupped hands, saying "It's only 50 here". Wanting to find an early exit off to Llandulas or somewhere and dropping his speed down to 40mph he envisaged a blockade up ahead to pull him over and read the riot act, luckily they didn't and he has been driving around locally at between 25 to 30mph everywhere. (Before you ask, NO, it wasn't me!)

I had a different experience, in July I was asked by local professional and friend Anthony Sproston to caddie at the Pre-qualifying for The Open at Stockport GC. After his round of 70 we did not think he would get through but with three others also at 70 we went down the 1st hole again in sudden death for the final spot, going through with a win on that hole.

Anthony then asked me to final qualifying at North Foreland GC in Kent. We had one practice day and after day one were 3 under par. On day two we could see we had to get to 8 under to have any chance, then, with a brilliant round of 65, we went to 9 under ahead of Costantino Rocca and Sven Struver for a place in The Open. Not planning ahead, we had no place to stay near Sandwich and everywhere was booked up, but the R&A sorted out accommodation at Broome Park GC, just outside Canterbury and we started our practice rounds at Royal St George's, only with Bernhard Langer and Luke Donald to name drop just two, (I asked Pete Coleman if he could give me any tips?, he answered 'Don't do the Masters it will be tough on your legs with that big bag'). Everything was supplied to us by Callaway and we got all new kit for the four days. With a first round of 83 and a second of 80 we missed the cut and only had the first two days. The dream had ended and we were back on our way home up the M6.

Congratulations to J. (laid-back) Jago, from Sutton Hall GC, who recently got married, I wonder how long he will keep the 'laid-back' bit now? "

Finally a get well soon message from the Section to Neil Thomas who has been of ill health recently.

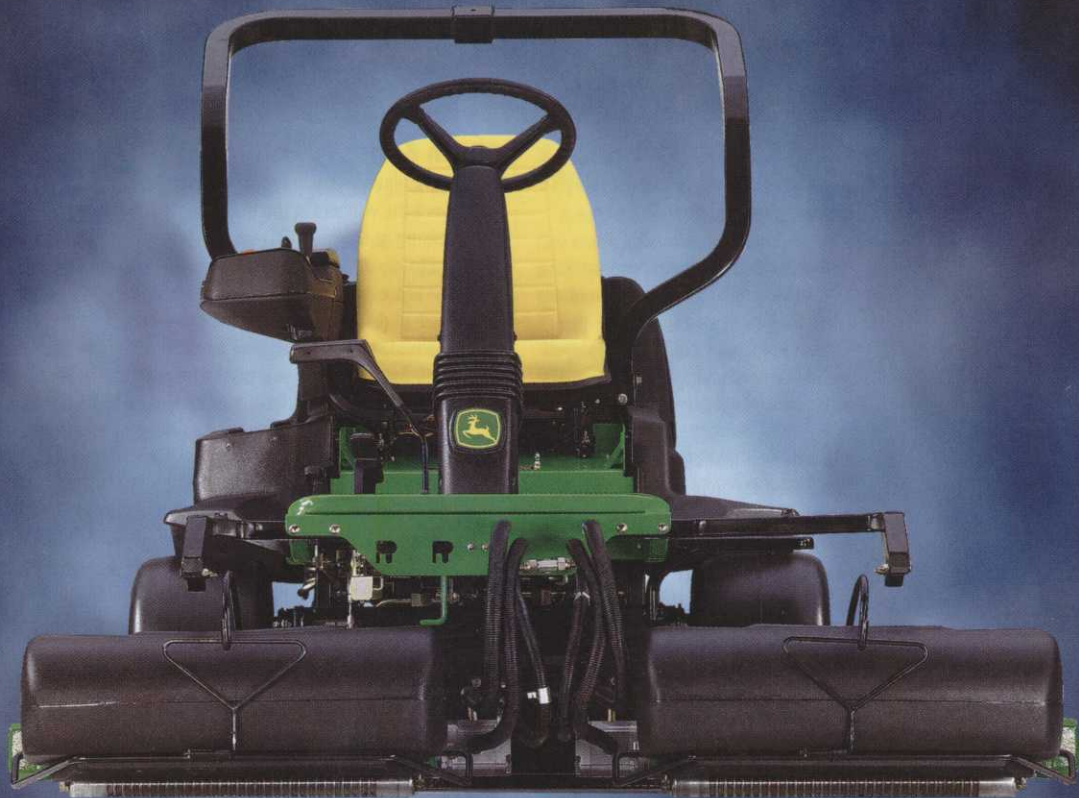
Any news or views give us a call: Home 01925 263394
Fax: 01925 269622 Mobile: 07778 162162

e-mail: acorn@golf@supanet.com

Mesen Cymru

Andrew Acorn





THE TRI-PLEX THAT RAISED THE BAR NOW PUTS IT OUT OF REACH

FAST TRACK
The new John Deere 2500A Tri-Plex Riding Greens Mower is a true workhorse. It's built to last and designed for performance. With its offset cutting units, distinctive control arm, and low ground pressure, the 2500A is a true industry leader. It's the only riding greens mower that can handle the toughest conditions on a golf course. And it's the only one that's built to last. So you can keep it running for years to come.



FINGERTIP
OPERATION

NO TRIPLEX
RING

CUTTING UNITS
PIVOT 18°

Introducing the new John Deere 2500A Tri-Plex Riding Greens Mower. When it was first introduced in 1999, our 2500 Tri-Plex defied all comparisons. With offset cutting units, a distinctive control arm and low ground pressure, the 2500 became an immediate hit with greenkeepers, technicians and operators alike.

But there is always room for improvement. With our new 2500A, we put in a new radiator system to increase cooling performance. An enhanced lift/lower assembly increases feel and response. Plus we updated the back lap valve and enhanced the wiring system.

To find out more about the tri-plex that continues to set the industry standard, contact your local John Deere grounds care dealer or call 01949 860491. Nothing Runs Like A Deere.

John Deere Ltd.,
Harby Road, Langar,
Nottingham NG13 9HT
Telephone 01949 860491
www.johndeere.co.uk



JOHN DEERE

NOTHING RUNS LIKE A DEERE

Northern

I am writing these notes a good week before The Roses clash. Hopefully we will beat the Lancastrians and will retain the trophy for the fourth year running. I will confirm the outcome next month.

If you are reading these notes and have not booked for Invitation Day at Wetherby Golf Club on Wednesday, September 10. Please remember that bookings can only be accepted up to a week prior to the event (September 3).

The next tournament after this is our Autumn Meeting and AGM sponsored by Bob Wild Grass Machinery. This is at West Bowling Golf Club on October 16. All details and bookings for this event are to be forwarded to Steve Heaton. His home address is 31 Hillcrest Avenue, Silsden, West York's, BD20 9NH Tel-01535 655764. Sorry for the inconvenience of this, but I will be on holiday when you are making your bookings. The AGM will be held between the golf and the evening meal at this event. Tee off times and AGM times will be published in next month's notes.

On the education side of the Section, a two-day training course in basic computer skills is to be held at BIGGA HOUSE in the Key Room has been organised. The date for this is November 25 - 26. There is a maximum of six candidates. The cost per person is £70.50 (inc VAT), which includes all training and lunch on each day. For more details contact Sami at BIGGA HOUSE, or myself.

The Dog Racing Night at Pontefract is filling up very well. This is taking place on Friday, October 24. All details were in last month's magazine or can be obtained from any committee member.

Congratulations are in order to our Vice Chairman Tito Arana who along with his wife are expecting their 2nd bambino later this year.

New members to our section and Association are Ray Cole from Golf City, Dean Gosney and Joe Monaghan from Scarthingwell Golf Club and Shaun Drum from Bridlington Golf Club. May I extend a warm welcome to you all and hope you use your association to the full.

That's all for now, talk to you next month and please keep in touch,
16 Westwood Ave, Eccleshill, Bradford, West Yorks, BD2 2NJ.
Tel: 01274 640739 Mobile: 07976 876264 E mail: Dthackray@aol.com
Dave Thackray



I would also like to welcome Andy Unwin to the Section as a new member and to congratulate Mark Kelsow for his appointment as First Assistant, both at Rotherham.

Our next golf competition will be held at Brough Golf Club on September 15. Tee-off 1.30pm.

If anyone has any news that they need publicising then please don't hesitate to contact me on 01709 548759 or 07752 883290 or by email on: chris.astle1@btpopenworld.com
Chris Astle

North West

I have recently returned from The Open at Royal St. George's, and have just recovered from what seems like jet lag. This was a particularly tough one as the accommodation was 25 miles away in Canterbury, and the R&A wanted all the course work finished by 6am. This meant the team for bunker raking right through the course had to leave at 3.15am to be at the course by 4am. I would like to congratulate all of the Support Team because no one was late for the early buses, or for their games throughout the week.

The course was in superb condition and was a real credit to Neil Metcalf and his staff. The course was set up for the best golfers in the world, and was a true test of golf, with an exciting finish.

We had no Section golf during July, but two matches clash during August, the Roses match, and the Regional final which I will report on in next month's notes.

September is a busy month for Section golf with the Whitelaw Bowl at Penrith Golf Club on September 3; Stewards Match at Hazel Grove on Monday, September 8 and the Autumn Tournament at Birchwood Golf Club on Wednesday, September 24. Contact me if you want to play in the Penrith or Hazel matches, but for the Autumn Tournament contact Bill Merritt, The Lodge, Beacon Park Golf Club, Beacon Lane, Dalton, Wigan, WN8 7RU. Tel: 01695 632883. Mobile: 07711 833809. Enclose a cheque for £20 made payable to B.I.G.G.A. N/W.

I have news that Neil Thomas our Executive Director is not well and in hospital, we wish him a speedy recovery. That is it for now but any news or queries contact me on: 01517 245412 or mobile: 07761 583377

Bert Cross



Sheffield

On July 23, the Sheffield Section held their annual golf tournament at Chesterfield Golf Club. Unfortunately I was unable to attend. However, I believe that everyone who attended thoroughly enjoyed the day, so I would like to take this opportunity to thank everyone at Chesterfield Golf Club for allowing the Sheffield Section courtesy of the course. The course was in excellent condition and credit goes out to Andrew Bunting and his team for presenting their course to

a fine standard.

Our thanks also go out to Russ Latham and Dave Smith from our main sponsor, Mansfield Sand, who as always were very generous in presenting an excellent prize table. I would also like to thank the rest of the trade members (P. Fell, of Aitkens, and S. Clayton, of Mid Lube) for donating raffle prizes.

The results from the competition are as follows: 1. A. Bunting 87 gross, nett 71 (best nett prize); 2. L. Smith 84 gross, nett 72; 3. A. Whittington 89 gross, nett 73; 4. C. Hopper 86 gross, nett 74; 5. I. Whitehead 85 gross, nett 74; 6. G. Wells 80 gross, nett 75 (best gross prize).

Consolation prize for best effort goes to M. Longmate who I think hadn't played golf for two years with a score of gross 176, 148 nett.

Nearest the Pin. M. Crawshaw. Longest Drive. I. Gravel and Best trade/guest A. Cherry, Chesterfield GC Green Chairman.

In July Rotherham Golf Club held two important golf competitions. The first was the EGU English Boys U16 Open Amateur Stroke Play Championship for the McGregor Trophy. The finest U16 golfers battled it out in what I believe to be an exciting tournament with some excellent golf being played.

The second golf tournament was the England Boys v Italy Boys U16. where days before the competition it rained non stop and it looked unlikely that the competition would take place. However, the weather took a good turn and for eight hours the staff at Rotherham squeegeed water so the competition could take place.

The overall outcome was that the lads had done well and the course was back to its full glory. Credit goes out to all involved and, to make things even better, England boys won.



MIDLAND REGION

Peter Larter

Tel: 01476 550115

The Midland Region Golf Management Trophy Competitions, sponsored by Scotts UK Professional, were held in superb weather at Ashridge Golf Club on August 6 and Kedleston Park Golf Club on August 7. Golf club teams comprising of a Greenkeeper (BIGGA member), Club Captain, Secretary and Chairman of Green competed for £200 worth of Scotts equipment and individual prizes at each venue. Twenty-five teams competed at Ashridge Golf Club, the winning team was Ryston Park Golf Club, led by Head Greenkeeper Neil Green, with a magnificent score of 92 Stableford Points, closely followed by Stocks Hotel G & CC with 88 points and Stockwood Park Golf Club with 87 points.

The Kedleston Park event was won by the team from Kirby Muxloe Golf Club with 84 points ably led by Head Greenkeeper Antony Bindley; Wollaton Park Golf Club were 2nd on 83 points and Drayton Park Golf Club 3rd with 81 points. Both venues were in excellent condition and great credit is due to Jim Cassidy and his staff at Ashridge Golf Club and Dave Leatherland and his staff at Kedleston Park Golf Club for their hard work in preparing the courses.

The Midland Region greatly appreciates the continued sponsorship from Scotts UK Professional, and there are similar events being planned for next year.

Peter Larter

Midland

This year's Summer Tournament was held at Blackwell Golf Club in memory of Roger Pullen, and if Roger was looking down I'm sure he would have been very flattered by the fantastic condition of the course as presented by Peter Fletcher and his fine team. I have yet to play on a finer golf course, very well done gentlemen. Our thanks to Blackwell Golf Club for this opportunity to enjoy a course of such wonderful character and finesse.

The results of the day were; Best Gross: E. Stant, Nett Results: 1. R. Hunter, 2. E. Stant, 3. A. Lane, 4. D. Fellows, 5. D. Gibbons. Our thanks to M. Shaw M. D. and B. Pilsbury, of Abbey Mowers, for the fine prize table. Nearest the Pin and Longest Drive was kindly sponsored by J. Skelton, of WBB Minerals. The victors being D. Fellows and A. Lane respectively. (There's no need to show off, Dave). The Trade winner was P. McCrainor. It was also nice to see three new faces, in the name of P. Fletcher, C. Williams and A. Lane, and two old hands, in the guise of T. Livingston and S. Morton.

Now a word for a man who has unassumingly for the past 15 years been our Mr Starter, and indeed an unbiased adjudicator of our golfing tournaments. The gentleman in question being Mr J. Hammond, of Bathgate Leisure. Your wonderfully dry, jovial persona, coupled with total diligence of scoring has more than added to the success of the Section's golfing events. Our thanks to you for your support John. Such would not be the same without you.

Those still remaining in the Scotts Doubles, please remember that such needs to be played by September 14. Good luck to all.

There may still be time to book your place to the forthcoming trip to Johnson's Seeds in conjunction with N. Tyler and Alpha Amenity. The day will be a morning start on October 7. Please ring Nigel to book your place or for more information, 07989 548058

Please don't forget the fishing event at Middleton Hall, September 21. The day is sure to be a huge success and we are anticipating a good turn out. Please ring me on 07816 410552 to book your peg.

I have the unfortunate duty of reporting that the Executive Director of BIGGA Neil Thomas is unwell. He is currently undergoing treatment. I'm sure all members shall join me in wishing him a full and speedy recovery.

That's all the news this month, brought to you from Schwilbilly Towers.
Sean McDade



Mid Anglia

Can I first apologise for the lack of notes in Around the Green but unfortunately Jim Cassidy has resigned from the Committee due to work commitments and a baby on the horizon. Thanks for all your help Jim. From next month Steve Mason will be writing in this Section of the magazine.

Moving back in time the Section held its Spring Meeting at The Bedfordshire Golf Club on May 16, sponsored by Rigby Taylor. The weather was not great for the day, however, the course made up for it prepared by John Gubb and his staff. The results are as follows, 1. Gerald Bruce 2. Kevin Armstrong 3. Russell Howson 4. David Thompson.

The next golf meeting is to be held on Friday October 10 at Berkhamsted. It is 18 holes in the morning followed by lunch and the AGM (Don't let that put you off the golf!)

Education courses will be organised by the committee shortly so if any of you have ideas please contact any of the committee. Last winter's courses had to be cancelled due to lack of support and the course visit to The Grove had a disappointing turnout for what was an excellent course visit. I know there are some of you out there because I see you at the Christmas Meeting which always has an excellent turnout so it would be nice to see you at other events that we organise.

Gerald Bruce



BB&O

Things have gone somewhat quiet lately as I suspect everyone like myself is up to their eyeballs in covering a wholesome, varied workload. This summer is proving again that no two will be alike as the seasonal balance chops and changes. No golf to report on from our section but I must just mention in passing the superb job done by the staff at Royal St George's with the BIGGA Support team in place. That was a great test of how a course can be utilised to make sure the modern golfer has a

**DRESS IT... Spread it... FILL IT...
Move it... Level It...**



440

One operator and one machine to handle all your top dressing needs - the Dakota range of Turf Tenders.

5 models to choose from with 3 hopper capacities -

- 4.2 cubic yards (3.25 cubic metres)
- 2 cubic yards (1.6 cubic metres)
- 23 cubic feet (0.65 cubic metres)

Rate and width of spread can be controlled from inside the cab.

Brochure available.

Marion Hall Lane, Marion, Macclesfield, Cheshire, England SK11 9HG

Tel +44 (0)1260 224568

Fax +44 (0)1260 224791

Email: info@richardcampey.com

www.richardcampey.com



420



412



410

Trailed version also available

**DAKOTA™
TURF TENDERS**

Optional stone/gravel chute now available



Hydraulic scraper blade for filling divots, hollows etc.

call for a demo - today!

**Campey
TURF CARE SYSTEMS**

Sole UK & European Distributor

challenge.

For those of you interested I would ask you make a note of the following date for our AGM meeting. This will be on October 22, 2003 at the Springs Hotel and Golf Club with a start time of 6.30pm. Sandwiches will follow this and plenty of beverages so please come along, support the section committee and have your say on any items you wish to flog us on until we beg forgiveness. This meeting is vital to the future of the BB&O Section, as there are three vacancies to be filled. We are looking for members who would be interested in the following positions of Secretary, Committee Chairperson and Treasurer. This signals the chance to bring on line new blood within the camp and a chance for some members to get involved and bring in new ideas to the benefit of all our members. Anyone interested in these positions who wishes to have a chat about what exactly is involved, please ring me on the number below or contact me through email and I will be only too happy to visit and give an insight on the various roles.

We have made some great changes over the past two years to ensure these roles are not too onerous for those involved in committee work. It is supposed to be fun to run the Section and I can assure you it has been with a great deal of personal satisfaction gained for all those who sit on the committee. As with life, things move on and that is simply why these positions are up for grabs so let's be hearing from you.

Congratulations to Steve Gardner, Deputy Course Manager at Flackwell Heath Golf Club whose partner Abi give birth to a baby boy on Saturday July 26th at approximately 3.30am. He weighed in well at 8lb so a good strong fella. We wish all the best to baby Lewis Matthew and family. Do I hear wedding bells in the air? Contact me with interesting media on: 07778 765021 or email david@mastergreenkeeper.fsnet.co.uk

David Haskell Craig



Devon & Cornwall

Our Course Management Trophy sponsored by Devon Garden Machinery and Scotts was held at Teignmouth Golf Club on Thursday, July 17. The day began with Rob Guntrip, of DGM, and John Pike, of Toro, starting the Stableford competition. Teams consisted of the Head Greenkeeper, the Secretary and the Greens Chairman from each club with the best two scores to count. Alan and Jeanette Domett, of DGM, kindly supplied refreshments on the 10th tee. After an excellent meal the prize presentation was given by Alan Domett. The winners were Sidmouth Golf Club with 77 points and Yelverton Golf Club were runners up with a score of 75 points. The Section would like to thank Devon Garden Machinery and Scotts for sponsoring the event and Teignmouth Golf Club for allowing us the use of their excellent facilities. Thanks also, to Head Greenkeeper, Anthony Woolnough, and his staff for presenting the course in super condition.

The Section would like to send best wishes to our Executive Director, Neil Thomas, who has recently been in hospital. We wish him well and hope to see him soon.

Derek Farrington has taken over from Paula Humphries as our Regional Administrator and we look forward to meeting up with Derek at our Section meetings in the future.

If anyone has any information for this column, please contact Steve Evans on 01822 617671 or e-mail to steve617671@ukonline.co.uk

Steve Evans



South Wales

The annual match versus the South West Section of BIGGA held as always at the Marriott St Pierre Resort was an excellent and enjoyable affair. The weather was dry, warm and sunny until a downpour cooled things down towards the end of the round. The golf course was in excellent condition and the evening meal was superb. Our thanks to all at the Marriott Resort for making us so very welcome. My sincere thanks to John Keenaghan for organising his team. I know that he was struggling early on, but mustered a full team and a stern challenge in the end. Thanks, John, for your efforts, they were appreciated and I'm sure I speak on behalf of everyone present by stating that an enjoyable day was had by all and in good spirit and good

company.

After a dismal showing from our Section last year and some stern words behind closed doors within the Section dressing room, the whip was wielded. Donning new sponsored golf shirts courtesy of Inturf, the S Wales team, selected to do battle, did the job. We brought home the Trophy (once Nobby can find it) by winning by 3 1/2 to 1 1/2.

My sincere thanks to Nick Martin, from Scotts, for sponsoring the day and for providing the longest drive and nearest the pin prizes as well as for seeing us all off on the 1st tee in conjunction with Raymond Burrows.

A sincere thanks to everyone present for supporting this annual fixture, for getting it back on track and for ensuring that it remains to be one of the most enjoyable events on our fixture list.

For those of you that don't know, the reason I'm back writing the report this month, is that our usual scribe and immediate Past Chairman, Adrian Panks, suffered a heart attack on the morning of the above match. His wife phoned us on the 1st tee at St Pierre to say that he would not be turning up as he had been admitted to hospital with a suspected heart attack. Adi is now home with his feet up and on the road to hopefully a full and complete recovery. No more fags, bags of rabbit food and look out Guy Woods, because he will soon be chasing you around the fens!

I've been asked by so many people to pass on best wishes to Ade, and thought it to be easier to do it through this column. So get back to normal soon and the section/association wishes you well.

Peter Lacey



South Coast

Firstly apologies for the lack of Section notes last month. A technical problem that has now been resolved. We are all basking in a tropical heatwave as I write this and we have several fans running in our house to try and keep us cool. The very hot weather has certainly changed the playing conditions on our golf courses as they have gradually turned fast and fiery but who's complaining. A very good friend of mine who travelled to The Open Championship remarked how good it was to see a course change its characteristics with the seasons. I sometimes think too many greenkeepers are overly worried about colour when surely they should be content on the quality of their turf. We must congratulate Neil Metcalf and his team for enabling us to have such a superb Open. The course was a very stern test and a great credit to all of his team.

Two fixtures to bring you up to date with. The Dorset Golf and Country Club was the venue for the annual Section match against the Wessex Secretaries which was again sponsored by Course Care. The weather was kind and the course was beautifully prepared by the greenstaff. The two sides were evenly matched but support from Dave Mears, of Course Care, helped us win the tie 3-2. Once again many thanks to the Dorset G&CC for their superb hospitality and the catering staff for a truly superb meal. Many thanks to Dave Mears and Paul Dyer of Course Care for their much valued support and sponsorship, and of course many thanks to the Wessex Secretaries for making the matches so enjoyable. Finally, to the greenstaff for all their hard work in preparing the course for us, many thanks.

Next port of call was Stoneham Golf Club and our summer invitation meeting sponsored by Huxley's and Rigby Taylor. The fourball better ball event is always popular and a good field was keen to get among the prizes. As usual there was some healthy banter with Chris Bittern regarding the forthcoming football season, only time will tell Chris! Pete Marsh must be working harder than ever now, as he is looking younger and slimmer than ever! Isn't that what your deputy is for Pete? We were all delighted to have Paula and Mike Humphries as our guests for the day. Paula really is a remarkable lady. She has not been in the best of health again but her radiant smile hides so much from all, but those who know her best. Mike had a great days golf but struggled somewhat after a long drive the previous evening. Enough said Mike! Anyway on to golf. The weather wasn't too bad although a strong breeze gave us testing conditions. Winners on the days were: 1. Spencer Haines & Jim Herbert, 46pts; 2. Tony Gadd & Steve Christopher, 46pts; 3. Chris Bittern & John Clarkson, 43pts. Longest Drive. Chris Bittern. Nearest the Pin. Steve Christopher.

Many thanks to Stoneham GC for their superb hospitality and the catering staff for an excellent meal. A huge vote of thanks to Pete Marsh, Chris Bittern and the team at Stoneham for all their hard work in preparing the course magnificently for us. Without our sponsors we could never have such great golf days so many thanks to Huxley's and Rigby Taylor and last but by no means least our hard working Chris Sturgess. Another great day Chris! Many thanks!

Our next golf meeting is at Rowland Castle on Thursday, October 2. The cost as usual is £18 and cheques should be made payable to: 'BIGGA South Coast' and sent to Chris Sturgess, 40 Kinsbourne Way, Thornhill, Southampton Wiltshire SO19 6HB. The Section AGM will also be held after the golf so make sure you are there. We are currently looking for more committee members so this is the ideal opportunity to join the committee and help shape the future of our association.

The committee is busy currently organising next year's Section Seminar which will be held at Canford Magna Golf Club again. If you have any speakers you wish to be included on the day then please contact me.

Once again any news that you wish to include in these notes then please call me on: 07966 386232 or 01202 661106 or a.mccombie@ntlworld.com

Until next month
Alex McCombie



South West

My prediction for the hot weather turned out to be accurate, although I am not going to take the credit. That's down to our very own Michael Fish alias Roger Davey, of Irritech. If you need long range forecasting, he's your man.

All quiet on the Western front as they say, so after my epic last month I shall keep it short and sweet.

Congratulations to the team from Long Ashton, upon winning the Scotts Management Trophy held at Bristol and Clifton GC.

Well done to Bobby Vinning, Assistant Greenkeeper from Mendip Spring Golf Club. He has qualified from Cannington College to go through to the final of Toro Student Greenkeeper of the Year Award, good luck Bobby.

I am arranging a two day seminar with Frank Newbury through BIGGA on improving presentation skills to members/committees, hopefully in early December. Watch this space. Don't forget contact me for your training needs and courses you think should be run, it's as easy as that, go on give me a ring I'm starting to get paranoid (is there anybody out there)?

Bath Golf Club 01225 483486, 07812 380936
Email greenkeepers@bathgolfclub.fsworld.co.uk
Guy Woods



SOUTH EAST
Derek Farrington
Tel: 01903 260 956

Kent

Welcome to this month's news report. During my calls over the last month I have seen you all preparing your courses for the eager golfers and enjoying the hot weather we are having, although I must say, most of you would like a drop of rain during the night, if possible!!

Congratulations must go out to Sheila Wheston, of Broke Hill GC, Sheila has successfully passed NVQ level 2 as well as PA1, PA2 and PA6. Nicky Mileham also from Broke Hill has completed NVQ level 2 as well, both of them studied at Hadlow College, well done to you both.

The Section would like to wish Jason Moody, Course Manager at Canterbury Golf Club and his fiancée Sara all the best for their Wedding on the 19th September, we hope you both have a fantastic day and have many happy times together as Husband and Wife.

Finally, if anyone has any news to report, please don't hesitate to speak to me during my rounds or give me a call.
Phil Belton



Essex

After a final rally round, 16 teams entered the very first Essex regional qualifier of the John Deere Team Championship held at Stock Brook Manor. Going through the rules seemed like torture, (and I thought golf was a simple game) but we finally got under way and it turned out to be a fantastic day for all. It was nice to see greenkeepers, golf professionals and committee members mixing together which

must be the way forward for all of us to build up good lines of communication and working together more successfully.

We would like to thank Tuckwells Ltd. the main dealers for John Deere, for sponsoring the day, particularly James Tuckwell, Neil Peachey and the rest of the crew, Stock Brook Manor GC and Arnold and the green staff for having the course in excellent condition.

The winners were from the newly formed golf club Ongar Park but with some old familiar faces. The final was held at the Belfry on July 25 but their score of 11 under par was not enough with the overall winners recording a massive 16 under. Hopefully next year's qualifier will be a day other clubs will not want to miss.

The results of the qualifier were – 1. Ongar Park Golf Club; 2. Saffron Walden Golf Club; 3. Lexden Wood Golf Club. Nearest The Pin. Paul Brown, Ballards Gore Golf Club and Longest Drive, David March, from Channels Golf Club.

On to some other good news, congratulations to Sam Young, of Ilford GC, on reaching this year regional final of the Toro Student of the Year Competition. Also to Ian Leonard, Andrew Miller and Ben Scrivener who were chosen to represent BIGGA as part of the Greenkeeping Support Team at this year Open Championship (early hours, long days and hard work by all accounts but worth while just to experience the tension and atmosphere).

The Autumn/Winter 2003 and Spring 2004 Section training courses have been put together and are as the following:- Two day Tractor Driving Course November 4 & 5 at the Essex Golf & Country Club. Two day Tractor Driving Course February 2004 at the Burstead Golf Club.

The cost per candidate is £70.50 (inc vat), includes training, testing as well as coffee/tea & biscuits and lunch each day.

One-day course titled "Presenting a Professional Image" March 2004 at the Burstead Golf Club. Subjects covering dealing with your committee/members/owners, good communication skills and public speaking (ideal as a refresher for course managers/head greenkeepers or first assistants).

The cost per candidate is £30 (inc vat), includes training, coffee/tea & biscuits and lunch for the day.

BIGGA last year subsidised local training by more than £40,000 so please make sure we use it rather than lose it to other Sections.

For further details please contact me on 01245 603131 or 07984 867939.

Martin Forrester.

Next Golf Day, October 1, Gosfield Lakes Golf Club.



Surrey

I am making notes for this edition on August 8, the temperature is in the mid 30's and I am stuck in a traffic jam on the Surrey Section of the M25. My primitive air conditioning (two open windows) is quite effective at 40mph but at my present speed it seems to work in reverse and the cab must now be around the mid 40's.

When you all read this in September I predict that you will be looking out from your sheds at the monsoon that is turning your at present brown course into a mud bath. If my forecast is correct just remember it's global warming to blame and not your irrigation and drainage and that your current Chairman of Green does have a father. If my ability to forecast the weather is incorrect then I will keep my head down until the new year and hope that you will forget the prat that writes so much rubbish each month.

Sunningdale Golf Club – Our annual venue for the MacMillan Tankard on August 6 was outstanding and we thank Brian Turner's team for producing the new course in Championship condition. The high temperature made consistently good quality golf difficult and the superb and very fast greens proved that only the best putters kept a respectable score. The respectable putters and winners were 1. Adam Lunoe, Richmond Golf Club, 43 pts; 2. Michael Sawicki, Richmond Golf Club, 40 pts. 3. Gavin Kyle, Knowle Park Golf Club, 36 pts; 4. Dave Goddard, Sunningdale Golf Club, 36 pts. 5. Steve Holmes, Hindhead Golf Club, 37 pts. Nearest The Pin. Dave Goddard. Longest Drive. Peter Fletcher, Seldon Park Golf Club.

The sponsors who supplied excellent prizes were Grass Roots and the Barbecue chefs who cooked our meal were trained by the Artisans' club. I am sure that our handicap secretary Tony (chopper) Bremer will take special care of the two members from Richmond Golf Club and that their very wide brimmed Mexican style hats are reduced to a more moderate size.

Brian Willmott

NORTHERN IRELAND

Well (Tipperary Man's Greeting)

Ulster radio have announced that the greens staff at Malone Golf Club have a new business venture – Donkey Rides. The truth is that they found a donkey on the 1st tee, (without proper shoes). It certainly wasn't greenkeeping staff. My bet Paul or Warren. It's a good job they have a Donegal boy there with some intelligence because the donkey happens to be a horse. True story.

I'm just back from Co. Down where Alan Strachan made me a mug of coffee in a clean mug. Class! I also called to see John Moore, at Ardglass, the new holes and the rest looks really well. John is a great guy. He was in the process of putting up flags from around the world at the back of the 18th and he thinks so much of golfers from the other side of the world he put their flags up, upside down so that they could see them from down under!

I hope all went well for Keith Little, at Warrenpoint Golf Club, with the Ladies' European Tour event. Everywhere looked very well, Keith looked pretty cool about it all.

I then went on to see Oisian White, at Greenore. It's beautiful down there and Oisian and I always get talking about farming. This month's subject – wild oats, the pulling of not sowing.

Health & Safety Award goes to Robert Nelson, at Lisburn Golf Club, but first I love calling to see Rob we always have a giggle and a yarn about something. No, sorry, nothing. Well, this time (serious now) he took me around the course, he has every right to be pleased with it, especially the recently completed open ditch drainage, the amount of water it has taken away is amazing to see and the condition of the grass in surrounding areas gives a really good indication of efficient drainage.

Well we got back and I needed to use the bathroom. Well, talk about H & S, you know where you stand, there was a broken tile so an astute member of staff put a white line around the tile and a G.U.R. sign (free drop). The Lisburn boys are also very festive. Why don't the rest of you leave your Christmas tree up fully decorated all year round?

Congratulations this month to Jonathan McCabe, from Carnalea, and Mark Gilmore, from Fortwilliam. They have both recently got married (to separate girls, I believe). Best wishes boys.

I hope by the time you read these notes Tommy Ferguson, from Ballyclare, is back to work. He had a really bad accident and we hope all's going well, Tommy.

Now, congratulations to Justin Waddell, from Fortwilliam. He has won the John Lindsay Award for top student NVQ Level 3 at Greenmount and won the regional Toto Student Greenkeeper and qualifies along with seven other finalists. I know Justin and I consider him to be an excellent ambassador, a credit to Micky and Sam. I know he will be a first class representative for the youth of Northern Ireland. He is a young gentleman - he won't need any luck, the others will. Well done, Justin.

One hundred and thirty one golfers had a really good day at Clandeboye. (Could I say the best yet?) The weather was good, the course was immaculate and Clandeboye hospitality first rate. We "all" raised £2400 for charity, and I think I had a good night. Thank you Terry and your staff at Clandeboye for a top class day. It now has become a date on the calendar. Very well done Terry, Aaron and your team. All should go well for the European Tour event in September.

I brought two of my friends over for the weekend from England and they couldn't get over how beautiful Northern Ireland is. It's about time someone had something nice to say about Ulster over there. Believe me, our hospitality, countryside, coastline, property, farms and golf courses are second to none, and I mean all six counties.

Results: Team prize – Micky O'Neill, Godfrey Clarke's Team. 1. Godfrey Clarke, Ballycastle; 2. Irwin Robson, Bangor.

Many thanks are extended to Horta Soils for their sponsorship and to Micky O'Neill and Ken Henderson for their help in organisation.

Frank says his three legged chickens aren't selling very well, problem is feeding a family of four.

See you at Portstewart Golf Club on September 2. Be there.

Graham Prosser



NEW BENEFITS FOR 2003

SILVER KNIGHT RESCUE

The breakdown and vehicle assistance package that gives you the service you have always wanted - without the additional expense for that extra cover. Cover includes:

- 24 hour Roadside Assistance and Recovery
- Home Start
- European Cover

SILVER KNIGHT REPAIR

The only Home Breakdown and Assistance package that offers you a complete quality service under one roof! Just one telephone number for all your repair problems. One policy to cover:

- Appliances
- Utilities
- Emergency Overnight Accommodation



**BOTH BENEFITS ARE
AVAILABLE AT A SPECIALLY
NEGOTIATED RATE OF**

£49.50 EACH

**OR £89.00 FOR BOTH VEHICLE
AND HOME BREAKDOWN**

Non-members £79.50 for each breakdown package

**FREEPHONE:
0800 0681893**

Buyers' GUIDE

The most cost effective way of reaching over 9,000 readers of Greenkeeper International every month.

Just call Katie Davies on 01347 833800 and ask about an alphabetical category listing. The cost starts from as little as £34.00 per month.

WIN

A SONY MINI DISC PLAYER!

Music while you work! The Sony, portable mini disc player not only plays but also records – up to 4 CD's can be recorded on one mini disc. We are even giving away 10 free discs to get you started. Stereo headphones are included along with an AC power adapter and optical cable for digital recordings. To win, all you have to do is enter this month's Buyers Guide competition sponsored by Greenlink International in support of their range of Nutri-Rational foliar.



Entry could not be simpler! Listed below are a series of clues relating to ONE company featured in the ever popular Buyers' Guide. Take care to look through all the products and services shown and write down the name of the company which you think the following clues refer to:

WHO ARE WE?

1. The contact person is a Dr.
2. The company provides a worldwide service.
3. The advert doesn't have an address in it or fax number.

Write down your name, address and answer on a postcard and send your entries to:

Turftime Teaser, Greenkeeper International, BIGGA HOUSE, Aldwark, Ane, York YO61 1UF. Entries to arrive no later than 16 September 2003. The first correct entry drawn will receive a fantastic Sony Mini Disc Player.

This competition is not open to BIGGA Staff or non-members. The solution to the August Turftime Teaser was 'B Jamieson Golf Advisors Ltd'. The lucky winner of the brilliant palm hand-held computer is Mr S. Pickering from Rotherham Golf Club. WELL DONE!

AERATION

HYDROJECT AERATION AND CHEMICAL INJECTION SERVICE
(WITH NO SURFACE DISTURBANCE)

KEITH DRIVER
(SPORTSTURF CONTRACTOR)
Tel: 01273 564015 Mobile: 07958 532008
8 Morecombe Rd, Brighton, Sussex BN1 8TL

All sports ground creation & renovation works undertaken
Earth Quaking, hollow and Solid tine coring
Overseeding, topdressing, drainage, etc.

MOORE'S
TURF MANAGEMENT
ESTABLISHED 1970

Please call Alistair Moore on:
01283 210456 or 07889 771341

AGRONOMY

B Jamieson Golf Advisors Ltd

Bruce Jamieson Golf Advisors Ltd, is an established company offering expert advice on:

- Golf Course maintenance
- Tournament preparation & presentation
- Machinery selection
- Budgeting
- Staff recruitment
- Soil & turf analysis
- Establishment of new golf courses

Contact: **Bruce Jamieson**
Browtop, 17 Haywarden Place, Hartley Wintney, Hants, RG27 8UA Telephone: 01252 844847 www.bigga.co.uk

AMENITY SPRAYING

WEED FREE

'Home of The Spraying Mantis'

T: 07000 481011
F: 07000 481022
E: spraying@weedfree.co.uk
W: www.weedfree.co.uk

Nutri-Rational FOLIAR

Stress-free solutions for fine turf

Call GreenLink
01245 222750
e-mail: greenlink@btinternet.com
www.greenlink.uk.com

ARTIFICIAL GRASS

VERDE SPORTS LIMITED
Tel: 01254 831666 Fax: 01254 831066

- VERDE TEE FRAME
Steel platform, woven grass top
- VERDE WINTER TEE
Generous size, self-install kit
- VERDE DRIVING MATS
Top Quality - Long Life - Best Prices
Replacement inserts for ALL Tee-Mats any size - made to measure
- ARTIFICIAL GRASSES
Comprehensive range for pathways, winter tees and putting

Gabbotts Farm Barn, Bury Lane, Withnell, Chorley, Lancashire PR6 8SW
www.verdesports.com www.artificialgrass.org.uk
email: niki@verdesports.com

Please call for samples & information

BIO-TECHNOLOGY

Our 12th year supplying biotech solutions



Reduce Chemical Use
Improve Fine Grass Growth
Disease Management
Thatch Reduction

Tel: 01372 456101
www.symbio.co.uk

BIGGA

SEE US AT SALT EX STAND G01

- Membership
- Recruitment
- Directory
- Exhibitions
- Education
- Training

BUNKER RAKES

BUNKER RAKES from only £2.49 each DELIVERED FREE
Strong construction with replaceable threaded wooden handle.

Fewer than 50 £2.90 each DELIVERED FREE
50 or more £2.49 each DELIVERED FREE

HEAD GREENKEEPER/CHAIRMAN OF GREEN? Ask for a FREE SAMPLE

Prices are for complete rakes. Free delivery UK mainland. Rake support pegs 80 pence each.
Made in the UK by **MW Dyason Ltd**, The Old Church, Brentingby, Melton Mowbray LE14 4RX
Tel: 01664 411911 Fax: 01664 569546
Email: MikeDyason@aol.com

BUNKER RAKES from £2.50 each

MEMBERS STRONG TRADITIONAL SHAPE

15" WIDE BLACK PLASTIC HEAD COMPLETE WITH 48" WOODEN SHAFT
1 to 39 - £2.95 EACH 40 PLUS - £2.50 EACH

HOLE CUPS £2.90 FLAGS £0.98p
FLAG PINS £1.80 TEE MARKERS £1.90
Greenkeepers/Distributors - FREE SAMPLE

FAIRWAY PRODUCTS
Unit 8, Peel Industrial Estate, Bury, Lancs. BL9 0LU
Tel/Fax: 0161 763 7060

CONSTRUCTION

CONTOUR GOLF LIMITED
INTERNATIONAL GOLF COURSE CONTRACTORS & CONSULTANTS

UK OFFICE: 00 44 (0)1327 879464
IRISH OFFICE: 00 353 (0)64 39965
e-mail: enquiries@contour-golf.com

Delta Golf 2000 Limited

- Construction
- Remodelling
- Reservoir Works

Tel: 01604 468908
Fax: 01604 474853
www.deltagolf2000.co.uk
180 Ruskin Road, Kingsthorpe, Northampton NN2 7TA

GRASSFORM LTD

Green Tee and Bunker Construction
Driving Ranges, Seeding and Preparation
Turfing, Buggy Paths and Tracks

FOR QUOTES / ADVICE OR ENQUIRIES
Grassform Ltd
Dunsteads Farm, Trueloves Lane
Ingatstone, Essex CM4 0NJ
Tel: 01277 355500 Fax: 01277 355504
email: grassform@tinyworld.co.uk

NEW GROUND GUARDS
protect turf from damage by vehicles up to 50 tons

GreenTek 0113 267 6000
GUARANTEED TO DO WHAT IT SAYS - OR YOUR MONEY BACK!

J & E ELY
GOLF COURSE CONSTRUCTION

Reading, Berks
Tel/Fax: 0118 9722257
E-mail: ely@btinternet.com

40th Anniversary 1961 - 2001

www.elygolfconstruction.com

John Greasley Specialists in Golf Course Construction

JOHN GREASLEY LIMITED
"Ashfield House" • 1154 Melton Road
Syston • Leicester • LE7 2HB

Tel: 0116 269 6766
Mobile: 0836 553899
Fax: 0116 269 6866

MJ ABBOTT LIMITED

SPECIALISTS IN:

- GOLF COURSE CONSTRUCTION
- REMODELLING & RENOVATION
- SPORTSGROUNDS
- MAINTENANCE

Dinton • Salisbury • Wiltshire SP3 5EB
Tel: 01722 716361 • Fax: 01722 716828
www.mjabbott.co.uk

LAND UNIT CONSTRUCTION LIMITED

Sportsground and Golf Course Construction

Hanslope, Milton Keynes, MK19 7BX
Telephone: (01908) 510414
Fax: (01908) 511056
www.landunitconstruction.co.uk

Advertise today in...
Greenkeeper
INTERNATIONAL

COURSE MAPS

LANDMAPS



GPS Golf course mapping
Accurate area measurements for chemicals and fertiliser application.
Environmental management and wildlife habitat maps.

Cliftonhill, Kelso, Roxburghshire, Scotland, TD5 7QE
Tel - 01573 225028
Fax - 01573 226416
e-mail archie@landmaps.sol.co.uk

DRAINAGE

Duncan Ross Ltd

SPORTSTURF DRAINAGE SPECIALISTS
Design, installation and maintenance service

- ★ Latest Sportsturf trenching machinery
- ★ Sand Slitting ★ Verti Draining ★ Overseeding
- ★ Gravel Banding ★ Top dressing

Tel: 01257 255321 Fax: 01257 255327
Appley Bridge, Wigan, WN6 9DT Lancashire

GRASSFORM LTD

Land Drainage Systems
Gravel Banding, Sand Slitting
Sand Spreading / Top Dressing

FOR QUOTES / ADVICE OR ENQUIRIES
Grassform Ltd
Dunsteads Farm, Trueloves Lane
Ingatstone, Essex CM4 0NJ
Tel: 01277 355500 Fax: 01277 355504
email: grassform@tinyworld.co.uk



SEE US
AT SALTEX
STAND G01

DRAINAGE SYSTEMS

'Lytag' Banding of greens & fairways
plus traditional drainage

North Staffs Irrigation Ltd

Tel: 01785 812706

E-mail: NSIrrigation@aol.com

PHILIP DIXON LAND DRAINAGE

Golf Course • Sportsfield
Drainage • Construction
Renovation • Maintenance
Sand Slitting • Gravel Banding
Vertidrainage • Overseeding
Top Dressing • Spraying
Water Supplies

Tel: 01772 877289

Fax: 01772 877479

Preston, Lancs

SPEEDCUT CONTRACTORS LTD

SPORTSTURF
Construction
Drainage
Renovation
Sandslitting

Contact: Kevin Smith
OXFORD 01865 331479

Turfdry

Golf Course Drainage Specialist

For fast and friendly UK service call:

Melvyn Taylor
on 01283 551417
or 07836 259133

White Horse Contractors Limited



SPORTS TURF CONTRACTORS

CONSTRUCTION
DRAINAGE
LAKES & RESERVOIRS
DESIGN & BUILD

Tel: 01865 736 272

Fax: 01865 326 176

www.whitehorsecontractors.co.uk

FINANCE & LEASING



DEDICATED FINANCE FOR THE

GOLF COURSE, SPORTS CLUBS & GROUNDS CARE INDUSTRY

TEL: 01620 890200

FAX: 01620 895895

sales@golffinance.co.uk

Nutri-Rational FOLIAR

Stress-free solutions for fine turf

Call GreenLink
01245 222750

e-mail: greenlink@btinternet.com
www.greenlink.uk.com

GOLF COURSE SUPPLIES



M.C. & M.A. STEWART (HAULAGE) LTD

A family business established 1969
BS EN ISO 9002: 1992 Registered Company

GRAVEL, SAND, SOIL,
ROOT ZONE, TOP DRESSING,
WOOD BARK, TRACK MATERIAL

Contact Rachel Stewart

Tel: 01257 792536/792692

Mobile: 07973 426890

Woodlands, 31 Preston Road, Coppull, Chorley, Lancashire PR7 5HS

GOLF MATS



EL
Exclusive Leisure Ltd,
28 Cannock Street, Leicester, LE4 9HR

Tel: 0116 233 2255

Fax: 0116 246 1561

'TIGER T GOLF MATS'

Quality artificial grass mats for winter tees, practice areas and driving ranges.

Web: www.exclusiveleisure.co.uk

Email: info@exclusiveleisure.co.uk

GRASS CUTTING MACHINERY



For a World That Isn't Flat

01622 812103 www.lastec.com

LASTEC UK

HEALTH & SAFETY



Specialist Health and Safety Advisors to the Golf Industry

Keep your club's Health and Safety Policies up to date with a 3 year...

Health and Safety Maintenance Plan

for further information contact us on:

Tel: 020 8905 7552 Fax: 020 8905 7550

Email: info@safegolft.co.uk

Web: www.safegolftplan.com

IRRIGATION

British Turf & Landscape Irrigation Association

"Quality by Association"



Our aim is to ensure you have the best possible irrigation system so we constantly monitor, maintain and raise the standards of our members.

For a full list of members contact David Halford

Tel/Fax: 07041 363130

Website: www.btlia.org.uk

Cameron IRRIGATION

Suppliers of Irrigation Equipment to Golf Courses
Bowling Greens, Landscapes, Horticulture.
Existing systems renovated and upgraded
DESIGN • INSTALLATION • SERVICE
BS EN ISO 9001 Registered Company

Telephone: +44 (0) 1425 474614

Fax: +44 (0) 1425 471296

http://www.misc.irrig.co.uk

e-mail: enquiries@misc.irrig.co.uk



IRRIGATION

GlenFarrow

DESIGN • SUPPLY • PARTS
INSTALLATION • SERVICING

For your cost effective water solution call...

01775 722 327

Over 30 years industry experience

Glen Farrow UK Ltd, Spalding, Lincolnshire
e-mail: info@glenfarrow.co.uk



IRRIGATION SYSTEMS

Designed, Supplied and installed throughout the UK and Europe



"THE PROFESSIONALS CHOICE"

Tel: 01606 558 927

Fax: 01606 862 882

E-mail: mail@irrigationcontrol.co.uk

Website: www.irrigationcontrol.co.uk

BTLIA Year 2000 Certificate of merit award

IRRIGATION CONTINUED

irritech limited

Independent Irrigation Consultants

Specialising in:-

- Existing system evaluation
- System design & upgrade
- Project management

Contact Roger Davey on:

01823 690216

www.irritechlimited.co.uk

20+ YEARS EXPERIENCE



YOURS FOR THE ASKING...

Irrigation systems, lakes and reservoirs, plus servicing, repairs, system updates and extensions a speciality.



IRRIGATION & SYSTEMS SERVICE
Unit 18, Downton Industrial Estate,
Batten Road, Downton,
Salisbury, Wilts SP5 3HU
TEL: 01725 513880 FAX: 01725 513003

MJ ABBOTT LIMITED

IRRIGATION SPECIALISTS

- DESIGN ■ SUPPLY
- INSTALLATION ■ MAINTENANCE



Dinton • Salisbury • Wiltshire SP3 5EB
Tel: 01722 716361 • Fax: 01722 716828
www.mjabbott.co.uk

IRRIGATION SYSTEMS

PROFESSIONALLY DESIGNED,
INSTALLED AND SERVICED

North Staffs Irrigation Ltd

Tel: 01785 812706

E-mail: NSIrrigation@aol.com



IRRIGATION SYSTEMS

Design, Manufacture, Supply,
Installation & Service
Throughout the UK and Europe

Golf Courses - Sportsgrounds
Recreational - Landscape Areas

Tel: 0870 6005131

Fax: 0870 6005132

E-mail: info@ocmis.com

Website: www.ocmis.com

Independent Professional Irrigation

Golf Courses, Bowling Greens, Sports, Racecourses, Gardens +++

Design/Advice Servicing
New Installations Service Contracts
Contracting System Upgrades
Supply & Sales PC Systems



BTLIA 2001 CERTIFICATE OF MERIT AWARD

OAKDALE



Golf Course and Sports Turf Irrigation

Design, installation and maintenance

enquiries@oakdale.uk.com

Phone: 01427 874200

Fax: 01427 875333

TORO
IRRIGATION SYSTEMS

Whatever your needs,
we have the solution.
Call Lely: 01480 226800 or
email: toro.info@lely.co.uk
www.toro.com

IRRIGATION UPGRADES



International
irrigation
consultants

- Assessment of needs
- Resolution of problems
- Independent advice
- Sensible cost

T: +44 (0)1483 278416 E: bill@2ic.co.uk
Website: www.2ic.co.uk

Nutri-Rational FOLIAR

Stress-free solutions
for fine turf

Call GreenLink
01245 222750

e-mail: greenlink@btinternet.com
www.greenlink.uk.com

LAKE CONSTRUCTION/LINERS



Liners for lakes, ponds and
storage lagoons from the
UK's leading contractor



Comprehensive advice
regarding design and
construction of water areas

Tel: 01206 262676 Fax: 01206 262998

E-mail: sales@geosynthetic.co.uk

www.geosynthetic.co.uk

**THIS SPACE
COULD BE YOURS**
only £600 per year

For further details
contact Katie Davies at
BIGGA on 01347 833800

LAKE RENOVATION



Lake Renovation Specialist

Watercourse De-Silting &
Remodelling
Bank Protection & Ground Works
Long Reach & Floating Excavators
Low Ground Pressure Plant

For further details & brochure:
Tel: 01788 810854 Fax: 01788 817100
E-Mail: enquiries@bbfcontracts.com
Web Site: www.bbfcontracts.com

MACHINERY



Large selection of new and
reconditioned Turf Maintenance
Machinery in stock.

FREE DELIVERY IN UK.
Warranty given. Also interested in
purchasing surplus machines.

Tel/Fax: 01829 733432
Mobile: 07778 063418

MOLE CONTROL

MOLE CONTROL

South West and South of England
Annual contracts or daily rate
For further details contact

David Lillyman

Buckland Monachorum, Devon
TEL 01822 855225
MOBILE 07763 123 625

NETTING

TILDENET

- Ball Stop Fencing
- Germination Sheets
- Practice Nets
- Bunker Membrane
- Driving Range Nets
- Target Nets
- Turf Reinforcement Mesh

Tel: 0117 9669684

Fax: 0117 9231251

Email: enquiries@tildenet.co.uk



**SEE US
AT SALTEx
STAND G01**

pH CONTROL



STRANCO PRODUCTS

pH control and dosing systems for
your irrigation water, for improved
turf quality.

For nationwide installation,
commissioning, service or advice,
please contact us at:-

STRANCO PRODUCTS

Priority Works, Tonbridge, Kent TN11 0QL
Tel: 01732 354888
Fax: 01732 354222

RAILWAY SLEEPERS

Railway Sleepers £6.50 each
New Untreated Oak £14 each
Sandstone Paving £12/m
Oak TGV Flooring

Why Pay More?

Tel/Fax: 01869 253176

Mobile: 07976 955382

LANDSCAPING GRADE SLEEPERS SELECTED HARDWOOD

BEST QUALITY
PRICES

ALSO

COCKLESHELL PATH MEDIA

BULK LOADS - DISCOUNTED PRICES

FINETURF PRODUCTS

Tel: 01375 361606

RAILWAY SLEEPERS

FULL RANGE OF NEW, USED, TREATED
UNTREATED, HARDWOOD OR SOFTWOOD
SLEEPERS AND CROSSING TIMBERS
TELEGRAPH POLES ALSO AVAILABLE

DELIVERY ANY AREA

BEST PRICES ON ALL GRADES & SIZES

Tel: 01302 888676 Fax: 01302 880547

Website: www.sleeper-supplies.co.uk
Email: sales@sleeper-supplies.co.uk

RECRUITMENT

Total Golf Solutions Ltd

Recruitment consultants specialising in recruitment for golf clubs
If you are recruiting or looking for a new challenge within the greenkeeping profession you need to contact us now

Telephone and fax, 01604 709696
Web site: www.totalgolf-solutions.co.uk
Email: mail@totalgolf-solutions.co.uk

ROOT ZONE

BANKS AMENITY PRODUCTS LTD

SUPPLIERS OF
FENDRESS™ ROOTZONE TO USGA ECONOMY ROOTZONE DIVOT MIXES

01858 464346 / 433003
www.banksamenity.co.uk

RUBBER CRUMB

The use of RUBBER CRUMB on grass as top dressing has been granted a PATENT in the UK and Ireland under Number EP0788301BI

TEBBUTT ASSO. ARE THE LICENSEES

with CROWN III rubber crumb Turf Reinforcement, the licensed product

Contact Tebbutt Asso. on 01253 342003 or Fax 01253 346644

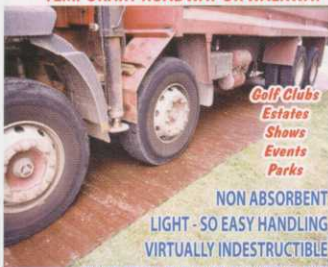
Greenkeeper INTERNATIONAL

For all recruitment needs

TEMPORARY ROADWAY

FLAT TRAK LTD

TEMPORARY ROADWAY OR WALKWAY



Golf Clubs
Estates
Shows
Events
Parks

NON ABSORBENT
LIGHT - SO EASY HANDLING
VIRTUALLY INDESTRUCTIBLE
MADE FROM RECYCLED POLYETHYLENE
FOR HIRE OR SALE - CALL 01908 505656

TOP DRESSINGS

BANKS AMENITY PRODUCTS LTD

EXCLUSIVE MANUFACTURERS OF
FENDRESS GREENTOP™ & FENDRESS™ TOP DRESSINGS
SUPERIOR, CONSISTENT TOP DRESSINGS

01858 464346 / 433003
www.banksamenity.co.uk

Bourne

Serving the South of England

Manufacturers of quality dressings, including green compost, fensoil & loams, for fairways, greens & tees, in loads of all sizes

Tel: (01797) 252298 Fax: (01797) 253115
www.bourne.uk.com

LOVIE LTD
QUARRY & CONCRETE PRODUCTS

Producers of quality Top dressings, Specialist sands, Rootzone soils, Grit, Gravel and Pathway materials for Golf Courses, Playing Fields and Sports Pitches

Cowbog, New Pittsigo, Fraserburgh, Aberdeenshire, AB43 6PR

Tel: **01771 653777**
Fax: **01771 653527**

Shirley Aldred & Co. Ltd

Suppliers of high quality granular charcoal for over 200 years

- Use one of the oldest products known to man to treat black layer
- Prevent thatch build up
- Improve drainage and rootzone
- Totally organic product of all grades
- Large stock levels of all grades
- Delivery anywhere in mainland UK within 3-4 days

Tel: 01433 620003
Fax: 01433 620388

TREES

THE TREE CARRIAGE COMPANY

GROWERS OF TREES

THE TREE CARRIAGE COMPANY
Court Gate Nursery, Eckington, Peshore, Worcs WR10 3BB
Tel: 01386 750585 Fax: 01386 750197
Email: willpoweruk@email.com Web: www.willpowers.co.uk

TRENCHERS

AFFORDABLE TRENCHING SOLUTIONS

AFT

A.F.T. TRENCHERS LIMITED
16/17 Addison Road • Sudbury • Suffolk • CO10 2YW
Tel: 01787 311811 Fax: 01787 310888
Email: info@trenchers.co.uk
Web site: www.trenchers.co.uk

TURF

CANNONS TURF LTD

Quality Cultivated Turf

TURF & SERVICE TO MEET YOUR NEEDS

07768 915499
TEL 01529 421210 FAX 01529 421591
www.cannonsturf.co.uk e-mail: info@cannonsturf.co.uk
CARDYKE FARM, SWATON, SLEAFORD, Lincs. NG34 0JW

Let our grass grow under your feet!

INTURF

Turf Growers and Innovators of Turfgrass Systems

The Chestnuts • Wilberfoss
York • YO41 5NT

Telephone: 01759 321000
Facsimile: 01759 380130
e-mail: info@inturf.co.uk
website: www.inturf.com

TurfTrac Course Protector

A portable playing surface for turf protection during adverse ground conditions. Ideal for enabling play during winter months.

merlin golf
Complete Protection from Tee to Green
Merlin Golf Limited
Merlin Way Hillend Ind Park
Dalgety Bay KY11 9JY
Tel: 01383 821133 Fax: 01383 824722
E: sales@merlingolf.co.uk

TURF ANALYSIS

THE TURF DISEASE CENTRE

WORLDWIDE, INDEPENDENT AND PROFESSIONAL TURF DISEASE SERVICE, PROVIDING:

- Turf sample analysis for identification of fungal and invertebrate problems
- Lecturing, seminars, workshops • Research collaboration

Contact: Dr Kate Entwistle Tel: 00 44 (0)1256 880246

VERTIDRAINING HIRE

NATIONWIDE VERTIDRAIN HIRE

SELF OPERATED OR WITH OPERATOR

TRACTOR WITH 1.6m
£500 PER WEEK

TRACTOR WITH 2m
£700 PER WEEK

TEL: **01522 869100**
www.countygrass.co.uk

PETER MANNINGTON

Specialist Verti-Drain Contractor for the South
For greens, tees, fairways and sportsgrounds
Experienced operator, competitive prices and reliable service

Tel/Fax Peter on 01580 861211
or Mobile 07850 612061

1 White Horse Cottages, Silverhill, Hurst Green,
Etingham, East Sussex TN19 7QA

WORTH DRAINING

VERTI-DRAIN HIRE
2.5 & 1.6M SAND SPREADING & OVERSEEDING
Distance no object

Tel/Fax: 01476 550266
Mobile: 07855 431120
Email: bloodworth@onetel.net.uk

WEBSITE ADVERTISING OPPORTUNITIES NOW AVAILABLE!

In the following areas:

- BIGGA Home Page
- Exhibition Page
- News
- Membership
- Education/Development
- Greenkeeper International
- The annual BIGGA Golf Directory

For further information contact the BIGGA Sales team NOW...
Tel: 01347 833800
Fax: 01347 833802
Email: sales@bigga.co.uk

WASTE/WASH WATER TREATMENT

HYDRO SCAPE

WASTEWATER TREATMENT SYSTEMS

The latest in biological wastewater treatment

Tel: 01425 476261
Fax: 01425 472380
email: sales@hydroscape.co.uk

Waste2Water

BIOLOGICAL VEHICLE & EQUIPMENT WASH-OFF SYSTEMS

ESD Waste2Water Europe Ltd.
Tel: 01782 373 878
Fax: 01782 373 763
E-mail: info@waste2water.com
Web: www.waste2water.com

SEE US AT SALT EX STAND G01

- Membership
- Exhibitions
- Recruitment
- Education
- Directory
- Training

LILLEY BROOK GOLF CLUB

Founded 1922.

Invites applications for the position of

DEPUTY COURSE MANAGER

Lilley Brook Golf Club is an 18 hole private members club set on the edge of the Cotswold scarp and widely renowned as one of the most picturesque and beautiful courses in the area.

The successful applicant will be a "hands-on" professional with a proven track record and ideally qualified to NVQ level 3 with PA1, PA2 and PA6 spraying certificates. He/she should possess strong motivational skills and the ability to lead from the front.

He/she should be competent in setting and managing budgets in order to assist the Course Manager in these aspects. He/she will be expected to stand in for the Course Manager during his absence, and assist in the planning and monitoring of course maintenance schedules and course projects.

Remuneration, pension scheme and holidays to be discussed at interview.

Previous applicants need not re-apply

Applications in writing including a full CV and 2 references to be forwarded by 30 September to:

The General Manager, Lilley Brook Golf Club,
Cirencester Road, Charlton Kings, Cheltenham GL53 8EG



THE LONDON GOLF CLUB

ASSISTANT GREENKEEPER

With two championship courses designed by Jack Nicklaus and Golden Bear Design, together with one of the most modern maintenance facilities, we are able to provide an excellent working environment for ambitious greenkeepers.

The club has built a reputation for high standards and key to achieving this has been the professionalism and dedication of our greenkeeping team.

We are currently seeking to recruit individuals with sound practical skills and experience, with a strong desire to learn and progress.

Applicants should be hardworking, well motivated and be able to work successfully with a team approach.

Salary will be in accordance with experience and qualifications.

If you are keen to progress your career in a challenging environment and develop new skills, apply in writing with a full C.V. to:

Peter Todd, Courses Manager, The London Golf Club,
South Ash Manor Estate, Ash Nr Sevenoaks, Kent, TN15 7EN

BILLINGHAM GOLF CLUB

Invites applications for the position of

1st ASSISTANT GREENKEEPER

The successful applicant will have the following:

- Minimum NVQ2 or equivalent
- 5 years experience
- Ability to lead, train and motivate staff
- Must hold PA2 and PA6

Closing Date: 30th September 2003

Please apply in writing with your CV to:

The Secretary, Billingham Golf Club, Sandy Lane, Billingham, Stockton-on-Tees, TS22 5NA

BRIDGEDOWN GOLF CLUB

Invites applications for

QUALIFIED GREENKEEPERS

to join our growing team on the first 'Seve Ballesteros' designed golf course in the country.

Applicants must have NVQ2, all spraying qualifications and at least 3 years practical experience.

If you would like to be a part of this exciting project, please apply on writing with full CV to:

Martin Hucklesby, Course Manager, Bridgedown Golf Club,
St Albans Road, Barnet, Herts, EN5 4RE

BLACKWELL GOLF CLUB LIMITED

EXPERIENCED GREENKEEPER

required for an 18 hole private members golf club set in mature parkland in the Worcestershire countryside.

Applications are invited for persons with a minimum of 5 years relevant experience in all aspects of greenkeeping, must have the ability to work to a high standard.

Qualifications would be an advantage but not essential.

Salary by negotiation depending on age/experience.

Apply in writing to The Secretary including full CV to:

Blackwell Golf Club, Agmore Road, Blackwell, Nr Bromsgrove, Worcestershire, B60 1PY

SHORTLANDS GOLF CLUB

Require a

QUALIFIED ASSISTANT GREENKEEPER

NVQ Level 2, PA1 & PA2 an advantage.

Salary will be based on age and experience.

Applications in writing with CV to:

Mr Peter May, Club Manager,
Shortlands Golf Club, Meadow Road, Bromley, Kent BR2 0DX

Recruitment

SKIDBY LAKES GOLF CLUB

Invites applications for

HEAD GREENKEEPER

for our 18 hole parklands course. Par 70, 6200 yards.

Experience of a new course would be an advantage.

May suit qualified Assistant Greenkeeper.

Salary Negotiable.

Applications in writing with C.V to Karl Worby,
Director of Golf, Skidby Lakes Golf Club,
Woodhill Way, Skidby, East Yorkshire, HU16 5SW



SKIPTON GC
- Founded 1893 -

GREENKEEPER REQUIRED

Applicants must be enthusiastic, self motivated, have a sound knowledge of golf course maintenance and be qualified to NVQ Level 2.

Applicants should apply in writing with details of relevant experience to:

Robert Clare, Course Manager,
Skipton Golf Club, Short Lee Lane, Skipton BD23 3LF

NEED TO RECRUIT?

COURSE MANAGER

SALES MANAGERS

HEAD GREENKEEPER

ENGINEERS

DEPUTY HEAD GREENKEEPER

TECHNICIANS

ASSISTANT GREENKEEPER

MECHANICS

SALES REPRESENTATIVES

THEN DO IT THROUGH GREENKEEPER INTERNATIONAL

When a recruitment advert is placed in the magazine it is posted for

FREE
on the **BIGGA** website

IN A HURRY TO RECRUIT?

Then why not take advantage of our website and start by advertising on there whilst waiting for the next publication. The recruitment section ranges from 3 to 6 pages each month and is the perfect way to reach all ranges of potential new recruits.

Is the BIGGA Recruitment section well read?

YES!

(well you're reading this aren't you!). Over 9000 readers – Over 7000 of which are BIGGA members

KIS and we'll do the rest – Keep It Simple!

Simply let our sales team know what is required and we will design the advert for you at no extra charge

GIVE OUR SALES TEAM A CALL NOW TO DISCUSS YOUR RECRUITMENT NEEDS AND WHEN GREENKEEPER INTERNATIONAL CAN ADVERTISE YOUR COMPANY'S SITUATIONS VACANT

01347 833800

Feature listing from September 2001

September 2001; Ryder Cup preview; Chafer Grubs; Drainage; BIGGA National Championship preview; Sandy McDivot; Machinery Maintenance; Soil Analysis; Wild Flowers

October 2001; Major Award for Walter Woods; Royal Portrush GC; Portstewart GC; Irrigation; Soil biodiversity; Leaf collection systems; Scotsturf preview; Saltex review

November 2001; BIGGA National Championship review; Environment Competition winner; Spraying; Toro Awards Preview; Cutting regimes; Dyke GC

December 2001; Toro Award Winners; Southern Gales GC; BTME preview; Specialty equipment; Thatch removal

January 2002; Walton Heath profile; Greenkeeping in Denmark; Moving materials; A first for Andy Campbell; New products

February 2002; Harrogate 2002 Review; Drainage; Castlerock GC; Trees; Recycling; TurfTrax profile; Barn Owl special report

March 2002; Donnington Valley profile; Utility vehicles; Essay competition winner; Irrigation; Seeds; Sandy McDivot

April 2002; Heyrose GC profile; Bernhard's Scholarship; De-stress your greens; COSHH assessments; Rootzones and topdressing; Maintenance facilities; Essay competition

May 2002; BIGGA Report; Nematodes; Caldly GC profile; Multi-tasking machinery; Bunker Sand; Essay competition; Fijian GC profile; BIGGA Minimum qualification

June 2002; Finding Fungi; Greetham Valley GC profile; Tyres; Calabria GC profile; Lakes and Ponds; Poa Annua - Jim Arthur

July 2002; Open preview; Turf; Steve Isacss; Emissions; Grinding; Rotary Mowers; BTME preview; Sandy McDivot

August 2002; BIGGA Golf Day; Open review; Talking Heads - Education & training; Trees; Dr Kate Entwistle; Pwllheli GC; Weather; Compact Tractors; Saltex preview

September 2002; National Championship Preview; Irrigation; Non Grass Cutters; Hawkstone Park; Careers in Greenkeeping

October 2002; Saltex Review; Golden and Silver Key Supporters; Environment Awards; Health & Safety; Sustainable Use of Pesticides

November 2002; Toro Student of the Year; National Championship; Drainage; St Andrew's Bay; Autumn Problems

December 2002; BTME & ClubHouse Preview; R&A Golf Course committee; Dr Kate Entwistle; Pennard GC

January 2003; Beedles Lake Profile; Talking Heads - Chemical Application; Rebuilding Golf Greens; Constructive Advice

February 2003; BTME/ClubHouse Review; Royal Liverpool Profile; Irrigation; Nematodes

March 2003; The Berkshire Profile; Meloidogyne; Overseeding Golf Greens; Talking Heads - Health & Safety

April 2003; Oakmere Park GC; Spraying; Golf Course Security; Bernhards Delegation; Ransomes Jacobsen Profile

May 2003; Cardrona Golf & Country Club; Poa Annua; Rough Mowers; Mole Control; Rootzone; Green Construction

June 2003; Irrigation; Ransomes Jacobsen Scholarships; Fertiliser; Fairway Mowers

July 2003; Irrigation Water; Greens Mowers; Bent Grasses; Course Management; Rakes

August 2003; Aeration; Open Review; Saltex Preview; Waste Water; Toro Student of the Year



Open All Hours

From all accounts the Open Championship at Sandwich was a huge success and the organisers were most pleased. As the tournament finished on Sunday evening some of the competitors made their way to Scotland for the Senior British Open being played over my home course at Turnberry.

The weather and conditions (and I am also proud to say the Golf Course) were as good as it gets. We had good crowds following their lifelong idols, although in their senior years the standard of play was outstanding, none more so than the eventual winner, Tom Watson, who triumphed in dramatic style, as he did when winning the Open Championship here in 1977.

I was most proud of our Greenkeeping team, as it was a tough week for the lads with the qualifying rounds being played at Barrassie GC as well as our new second course the Kintyre. To get two golf courses to Championship standards in the same week is no mean task especially with early tee-off times from 6.40am on the Ailsa and a two-tee start from 7.30am on the Kintyre, both on the same day! Our thanks go to our two friends, Course Managers, Jim Paton, West Kilbride, and Derek Wilson, at Irvine Bogside, who ably supported Martin and Jimmy at 4.30am, an early start for our lads, especially as they had to come back again in the evenings for a repeat performance.

Throughout modern championships one is expected to produce fast putting surfaces, the professionals and organisers are looking for green speeds of around 10 – 11 on the stimp meter. This may be ok and will not do any harm providing it is only for a limited short spell. Close mowing does discourage the coarser, undesirable grasses, but one needs to keep a very close eye on the greens, and know exactly how long it is before signs of stress start to show then heights of cut will have to be raised. Otherwise it is not only the greens that will have their necks cut, it will be the greenkeeper as well!

It does put the pressure on when ones courses and workmanship are shown throughout the world on TV,

especially at this time of year when various forms of fungi in the soil can become active and form unsightly visual disfigurement to the putting surfaces. It is all so easy to reach for the chemical bottle, but most of the fungal activity will only be temporary and not cause long term damage, so chemical treatment is not normally necessary. During this unusually long hot spell it has also brought other pests, we are inundated with flying-ants and wasps that seem to be more troublesome than ever this year. At least the holidaymakers are enjoying this long hot dry spell, as are the local farmers who have already harvested their spring barley and winter wheat much earlier than normal.

Unfortunately I attended another funeral this month, this time it was the sad loss of Bob Jamieson, who was the former Golf Professional at Turnberry for more than 30 years. Bob was well respected in the world of golf and well known for training many assistants who now hold some of the top jobs in the world. Bob's two sons are also in the golf business, Gregor followed his father's profession and is the Pro at Lake Nona, Florida and his younger son, Bruce, who is a good friend and of course well known throughout Europe as a Golf Course Advisor. My deepest sympathy and respects go out to Bob's family.

George Brown
Chairman



**Unique
Triple Zig Zag
brushes**

Is this the most effective topdressing and grooming brush ever invented?

The Greens Groomer has quickly been recognised by many top golf courses as the most effective method ever invented for brushing-in topdressing!

It is easy to attach to almost any power unit and is amazingly quick for grooming or dispersing dew. But where it really shines is for brushing-in topdressings – heavy or light. Then its 14 separate zig zag brushes move the sand in different directions



Mounted version for use with compact tractors to work it thoroughly into the surface, or down your coring holes, in less time than anything else!

Available in 6', 12' and 17' versions, towed or linkage mounted, there is a Greens Groomer to suit every golf course.



EVEN FASTER!
THE NEW
GREENS GROOMER 12'

Phone NOW
for a FREE
Demo!

0113 267 6000

GreenTek

GUARANTEED TO DO WHAT IT SAYS
-OR YOUR MONEY BACK!



&

ClubHouse

BE A PART OF THE GREATEST SHOW ON TURF!

20-22 JANUARY 2004

Decision makers visit BTME & ClubHouse

24% from the South

28% from the North

11% from Scotland/Wales

28% from the Midlands

9% International

How much business are you missing out on?

LAST FEW STANDS - SELLING FAST!

CALL PAULINE TO SECURE YOURS

Tel: 01347 833830 Email: pauline@bigga.co.uk www.bigga.org.uk

ALL FINE TURF INDUSTRIES REPRESENTED

