



Greenkeeper Education and Development Fund

BIGGA GOLDEN KEY and SILVER KEY MEMBERSHIP

Unlock the doors to progress through BIGGA's Education and Development Fund - the key to a great future for greenkeepers, golf clubs and the game of golf.

Golden and Silver Key Membership is available to both companies and individuals.

For details, please contact Neil Thomas on 01347 833800 or via neil@bigga.co.uk

Golden Key Supporters



Golden Key Company Members

Company	Tel: Head Office
Bernhard and Company Ltd	01788 811600
Gem Professional	01254 356611
John Deere Ltd	01949 860491
Hayter Ltd	01279 723444
Massey Ferguson (AGCO Ltd)	02476 851292
PGA European Tour	01344 842881
Rigby Taylor Ltd	01204 377777
Scotts UK Professional	01473 830492
Ransomes Jacobsen Ltd	01473 270000
The Toro Company/Lely UK	01202 319987
TurfTrax Group Ltd	01722 434000

Golden Key Individual Members

J H Fry; J H Greasley; WJ Rogers; David S Robinson; Stuart Townsend; Douglas Smith; Andrew Cornes; Andy Campbell MG, CGCS; Roger Barker

Silver Key Supporters



Silver Key Company Members

Company	Tel: Head Office
Ernest Doe & Sons	01254 380311
General Legal Protection Ltd	01904 611600
Heath Lambert Group	0113 246 1313
Ocmis Irrigation	01460 241939
RainBird	01273 891326
Syngenta Professional Products	0041 613 233 028

Silver Key Individual Members

Clive A Archer; John Crawford; Bruce Cruickshank; Douglas G Duguid; Alan Holmes; Kenneth Jones; Iain A MacLeod; Robert Maibusch MG; Richard S Muller; Elliott R Small; Steven Tierney; CJ Yeaman; Richard Lawrence; Clive Osgood; David Robinson; Richard Stillwell; Stephen Dixon; Ian Semple

Ken and Sami would like to wish all of our readers a very happy new year. We to hope to see you during the Continue to Learn week at Harrogate. Please remember, that there will be a BIGGA Education and Training Stand in Hall M, this year, at BTME.

OnCourse

Golf Course Management Software has, in the past, been seen by many greenkeepers as being too complicated for their course – that is until BIGGA introduced OnCourse, in 2000. Developed by greenkeepers, for greenkeepers, OnCourse is now being widely adopted by BIGGA members across Britain and Europe, from large, multi course facilities to the smaller private members clubs.

With the same underlying principles applying equally to both small course and large resort course greenkeeping facilities, the software is scalable to suit all situations. Andy Campbell, MG CGCS, the Estates and Golf Courses Manager at De Vere Carden Park has recently installed the system: "I have tried other programmes but OnCourse suits our needs best, it is the ideal package for our multi course operation".

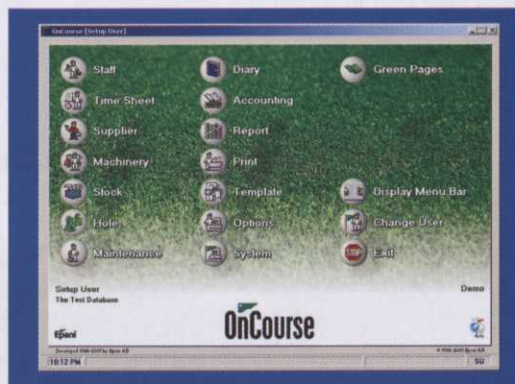
OnCourse has the potential to save a huge amount of time and paperwork for the Course Manager, allowing him to spend more time out on the golf course, managing his staff. Vast amounts of course management data (traditionally kept in dust-covered files) can be stored within the system, resulting in a more organised greenkeeping department, which requires significantly less administration: "It not only allows the Head Greenkeeper more managerial control but also allows all staff to see what is happening day to day, thus improving efficiency and control," added Andy.

OnCourse provides total budget transparency for the Course Manager. The reports produced by the system allow the Club Management to see exactly where resources are being utilised on the golf course and how budgets are put together. Most importantly, they can provide the head greenkeeper with the justification he requires for budget increases and requests for large capital investment items.

Producing detailed reports from OnCourse couldn't be simpler. For the 'Green Committee', showing how much time was spent on certain activities is practically impossible with a paper based system. OnCourse, however, provides this powerful information in many different formats: by hole, piece of machinery, time frame or member of staff, as well as retaining all historical information for comparing course activity and tasks with previous years.

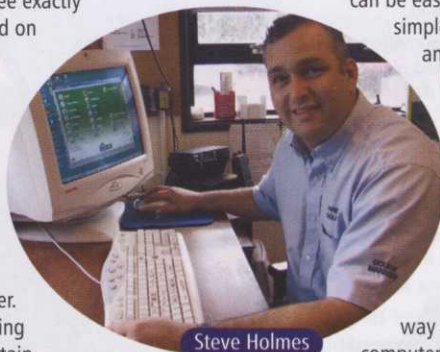
By using OnCourse the Course Manager can provide a Club Manager with peace of mind that the most expensive assets on the course are being utilised to the full whilst being maintained to the highest possible degree. OnCourse allows you to protect these investments and manage their rotation, replacement and depreciation.

"With ever tightening employee and Health and Safety legislation, OnCourse enables me to keep all staff records in one system, be they related to training, discipline or



Date	Time	Area	GR	IF	IF	Making
03/05/1999	Fertilize	Green				No
28/04/1999	Fertilize	Fairway	0.12	0.10	0.20	No
12/04/1999	Fertilize	Tea	0.30	0.25	0.50	No
26/03/1999	Fertilize	Tea	0.36	0.30	0.60	No
05/03/1999	Fertilize	Tea	0.68		1.90	No
04/03/1999	Fertilize	Tea	0.68		1.90	No
07/03/1998	Top Fertilize	Tea	22.00	3.00	4.00	No
05/10/1998	Sow	Tea				No
29/09/1998	Public	Tea				No
28/09/1998	Fertilize	Green	0.30	0.18	0.30	No
18/09/1998	Vertical Cut	Tea				No
15/09/1998	Fertilize	Tea	0.12	0.10	0.20	No
28/08/1998	Fertilize	Green	0.30	0.18	0.30	No
19/08/1998	Top Fertilize	Green	0.00	0.00	0.00	No
18/08/1998	Cutting	Tea				No

accidents in the workplace," commented Steve Holmes, the Course Manager at Hindhead Golf Club in Surrey. It only takes a minute per day for members of Steve's team to complete their daily timesheet. This involves nothing more than a few clicks with the mouse to record where they were working, for how long, and on what task or piece of machinery. By doing this, the data flows to all parts of the system, building up a comprehensive picture of greenkeeping activity and machinery use, all of which can be easily reported on. Using a cheap and simple cable to link his office computer to an old PC in the greenkeeper's canteen, Steve has maximised his system, by making it easy for his staff to access OnCourse at all times of the day. Each greenkeeper has his own logon password, which ensures that he only has access to areas of the system that Steve sees necessary.



Steve Holmes

"The system is easy to learn your way around – even for a self-taught computer user like me," added Steve. "I do a monthly backup of all my data to disk, and keep a copy of it in the Clubhouse safe as well as a copy at home. The more you use it, the better the system is."

The question that every head greenkeeper and course manager should be asking themselves this winter is: "With hundreds of thousands of pounds worth of assets under my control, can I afford not to manage my department without a computerised system that costs only £800?"

The winter months are the ideal time to install OnCourse, enabling you fully to reap the rewards come next spring. For further information, contact me at BIGGA House or visit the BIGGA Education Stands in Hall M or Hall D, at the BTME and ClubHouse Exhibitions, where you can also see demonstrations of OnCourse.

Regional Courses

We have had some very successful one and two-day courses this autumn and there are a few places left on the spring courses which start in February. These superb courses are excellent value for money, especially if you can acquire Golden Key Company. Recent feedback from delegates include: Great venue, excellent courses. "Brilliant! Solely the best reason for joining BIGGA. Enjoyed the two days fully. Look forward to the next course.

Unfortunately, due to an administrative error all the dates for the March 2003 courses were listed as March 4 & 5 in the December edition of this magazine. Apologies for any confusion. The dates of the March Courses are:

Further Computer Skills	Berkhamsted Golf Club	4 and 5 March
Project Management	Ross on Wye Golf Club	5 and 6 March
Coaching Skills	Potters Bar Golf Club	6 and 7 March
Management Skills for Head Greenkeepers	De Vere Carden Park	18 and 19 March
Basic Computer Skills	Southerndown Golf Club	18 and 19 March
Presenting a Professional Image	De Vere Carden Park	20 March
Budgets and Finance	De Vere Carden Park	16 and 17 April



You have a few more days to book your place on Continue to Learn, which runs from 20 to 23 January 2003. Places at the National Education Conference and on Workshops must be pre booked. However, you can book places on Seminars 'on the day', by calling at the BIGGA Education and Training Stand in Hall M. Remember, the National Education Conference and Workshop Programme is supported by the John Deere International Challenge.

Careers Fair

Remember to visit the BIGGA Careers Fair, in Hall Q at the Harrogate International Centre on 21, 22 and 23 January 2003. Supported by the TORO Company, the Fair includes information on careers in Greenkeeping and Golf Course Management, Golf Club Management, Agronomy, Machinery Sales and support, the Chemical and Fertiliser Industry, the Land Based Industries and Playing Golf.



The Allen Hover Mowers Powered by Honda Engines

Three models are in the range each benefiting from the easy starting smooth and quiet running of the Honda power packs, which can go anywhere a 2-stroke can.

The usual features of Allen hovers are retained, strong duty handlebar fixing to the deck, engine mounting frame giving less vibration and less damage to engine/deck in heavy duty conditions.

Tapered cone fixing of impeller to crankshaft means this item can be removed easily and without the use of pullers with resulting damage.

Ergonomically designed handlebars give more comfortable and hence less tiring grip, and are easier for side to side mowing.



440
Hovertrim



446
Hovertrim



450
Hover
Professional

Clean cut, quick
change, safety blades

- Safer than a bar blade
- Clean cut – minimises bruising
- Safe for use with a rope
- Quick & easy to change



POWERED by
Honda
Engines



allen
Powerful solutions for your growing needs

FOR A FREE BROCHURE AND DEALER LIST CALL

0845 60 10 815

Allen Power Equipment Limited, The Broadway, Didcot, Oxon, OX11 8ES
Telephone: 01235 515400 Facsimile: 01235 515401 E-mail: sales@allenpower.com