

Confirmed Exhibitors

Details correct as of 23.07.01

- | | |
|-----------------------------------|--|
| Advanta Seeds UK Ltd | Links Leisure Ltd |
| AF Trenchers Ltd | Lloyds & Co Letchworth Ltd |
| Aitkens Sportsturf Ltd | Logic Irrigation |
| Allen Power Equipment Ltd | Long Equipment Ltd |
| Allett Mowers | MJ Abbott |
| Amenity Land Services Ltd | Major Equipment Ltd |
| Amenity Technology | Merrist Wood College |
| Angus Horticulture | Mitchell Hire Ltd |
| Arden Lea Irrigation Ltd | New Holland |
| Aventis Environmental Science | Nickerson UK Ltd |
| Avoncrop Amenity Products Ltd | North Staffs Irrigation Ltd |
| Barenbrug UK Ltd | Ocmis Irrigation UK Ltd |
| Bathgate Silica Sand | Oliver Seeds Ltd |
| BCA | Pentagon Amenity Marketing Ltd |
| Bernhard & Company Ltd | Prestige Sports Surfaces Ltd |
| Better Methods Europe Ltd | PSD Agronomy Ltd |
| Bickers plc | Rain Bird Europe S.A.R.L |
| BLEC Landscaping Equipment Co Ltd | Reasheath College |
| Boughton Loam Ltd | Richard Campey Ltd |
| Boyd Golf Course Accessories | Rigby Taylor Ltd |
| British Seed Houses | Risboro Turf |
| Cannington College | Rolawn (Turfgrowers) Ltd |
| Capari Pumps (UK) Ltd | Rousseau Equipment Ltd |
| Charterhouse Turf Machinery | Rufford Soil Technology |
| Charterhouse Turf Machinery | Same Deutz-Fahr UK Ltd |
| Course Care | Saxon Industries |
| Dennis | Scotts UK |
| Distinct Manufacturing | Shirley Aldred & Co Ltd |
| DLF Perryfields | Simon Tullett Machinery |
| DW Tomlin | Sisis Equipment (Macclesfield) Ltd |
| Eagle Promotions | Spaldings UK Ltd |
| Elmwood College | Speedcut Contractors |
| Etesia (UK) Ltd | Sumi Agro (UK) Ltd |
| European Turf Technology Ltd | Supaturf Products Ltd |
| Evenproducts Ltd | Swan Golf Designs Ltd |
| Farm & Garden Machinery | Swan Plant Services Ltd |
| Farmura Ltd | Symbio |
| GPS Services Ltd | Tacit |
| Gambetti Barre UK Ltd | Talbot Farm Landscapes Ltd |
| Garfitts International Ltd | TEG Environmental |
| Gem Professional | Textron Golf Turf and Specialty Products |
| Geosynthetic Technology Ltd | The Association of Golf Club Secretaries |
| Golf Car UK Ltd | The Golf Sign Company |
| Greenkeepers Training Committee | TIL Irrigatoin Ltd |
| Greenlink International | Tildenet Ltd |
| Groundsman Industries | Tonick Watering Ltd |
| Hallmarket Ltd | Toro Commercial Products |
| Hardi | Totrax Ltd |
| Hayter UK Ltd | Trelleborg Wheel Systems |
| Headland Amenity | True-Surface Rollers |
| Hunter Grinders Ltd | TT Proturf Ltd |
| IQG | Turf Seed UK Ltd |
| Irrigation Control Ltd | Turfgrass Services International Ltd |
| John Deere | Turfmech Machinery Ltd |
| John Greasley Ltd | Tyre-line Original Equipment Ltd |
| John Hinton Associates | Verde Sports Ltd |
| Kawasaki Motors (UK) Ltd | Vitax Ltd |
| Ken White Signs | Waste 2 Water |
| Kestrel Golf | White Horse Contractors Ltd |
| Kubota (UK) Ltd | Whitemoss Amenities Ltd |
| Lastec UK Ltd | Wiedenman UK Ltd |
| Lewis Equipment Ltd | Yamaha |
| Lindum Seeded Turf Ltd | York & Martin |

Preparations for BTME2002 are cruising along, but you'll have to step up a gear to catch our Keynote speaker ...

TUE 22 JAN 02

WED 23 JAN 02

THU 24 JAN 02

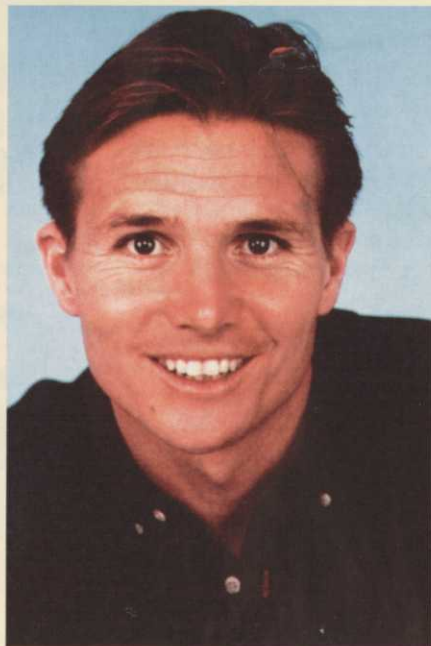
Making a sprint to Harrogate

Keynote speaker announced for BTME2002

Roger Black M.B.E. will be the Keynote Speaker next January at BTME 2002. For 14 years Roger represented Great Britain at the highest level in the world of athletics, both as an individual 400 metres runner and as a member of 4 x 400 metres relay team. He won 15 major Championship

Focus on Grandstand, "The Black Run" for skiing enthusiasts and is presenting at all major Athletics Championships, most recently at the Sydney Olympic Games.

By combining his close understanding of motivation and self-development with his personal experiences both on and off the track, Roger now inspires, motivates and entertains audiences throughout the country. Once again, the Keynote Speaker session looks set to start the BTME off on a high note and we look forward with anticipation to welcoming Roger Black.



Dr James Beard at the BIGGA Learning Week at BTME. The BIGGA Education and Training Department can announce that Dr James Beard, PhD will be making two presentations as part of the Learning Week at BTME to be held in Harrogate in January 2002.

Dr Beard will be presenting a Master Class at the National Education Conference on Monday 21 January and will present an extended Seminar session on Thursday 24 January.

Watch out for further Learning Week announcements in your monthly copy of Greenkeeper International,

in the News and Events section and the BTME section of our website.

medals including European, Commonwealth and World Championship Gold medals. His greatest achievement was winning the Olympic 400 metres Silver medal in 1996 and he is particularly admired for his triumphs over adversity, successfully overcoming several serious injuries and setbacks throughout his career.

He was British Men's Team Captain and was awarded the MBE. in 1992.

Roger is now a presenter for BBC Television Sport and works on a range of programmes including Athletics

at the Conference and on the Seminar Programme. His subjects include green construction and bunker design and construction.

Speaker Update

The Continue to Learn Week at BTME is approaching fast. The Education Programme is starting to take shape with most speakers confirming their attendance.

Those speakers confirmed include Dr James Beard, who will speak on both the National Education Conference and Seminar Programme. Jim Moore, from the USGA, will also make two presen-

tations, again at the Conference and on the Seminar Programme. His subjects include green construction and bunker design and construction.

The Conference will also feature sessions on Global Warming and the Golf Course and Preparation for Winter.

Workshops include a two day Golf Course Design 1 workshop, presented by Howard Swan and Simon Gidman and two, one day workshops on the subjects of Emergency First Aid and Environmental Management. These one day workshops will run on both Monday 21 and Tuesday 22 January.

The Seminar programme will commence on Wednesday 23 January and will include speakers from the USA, Canada and Ireland. Paul Crowe will be making a presentation on Preparation for the Ryder Cup at The K Club and in contrast Kevin Ross from the Country Club of the Rockies in Colorado will be discussing Gizmo's, Gadgets and Inventions.

An extended seminar session on Thursday morning will be presented by Brin Bendon, Vector Training and David Winterton, MG, Maidenhead Golf Club on the subject of Strategic Planning.

The seminars continue on Friday morning with Dr Mike Canaway presenting Training and Professionalism go Hand in Hand. Additional presentations will also be made by Andy Campbell, MG and Clive Osgood, BIGGA Chairman.

The 2002 Education Programme offers maximum flexibility to delegates allowing them to mix and match the Conference, Workshops and Seminars.



For the very latest BTME2002 news and event information visit: www.bigga.org.uk