

ASSISTANT GREENKEEPER ASSISTANT GREENKEEPER ASSISTANT GREENKEEPER ASSISTANT GREENKEEPER

Profile

Usually the spotlight falls on the Course Manager or Head Greenkeeper at a Club.

Now it is the turn of those whose work often goes unheralded to star.



Name: Stuart Kennedy

Club: Overstone Park G&CC

Position: Deputy Head GK

Age: 27

1. How long have you been a greenkeeper?

Ten years

2. What education are you currently undertaking?

National Intermediate Diploma in Turfculture

3. Which one task do you most enjoy doing?

Training all our our young green-keeping and landscaping team

4. Which one task do you most dislike doing?

Stone picking bunkers

5. What job other than greenkeeping might you have ended up doing?

Armed forces

6. Who has been the biggest influence on your career?

My Course Manager, Phillip Helmin and Andrew Murray, retired Head Greenkeeper at Brora GC

7. What would you do to improve the life of a greenkeeper?

Provide more training and education to help produce better golf courses

8. What are your hobbies?

Golf and working on my garden

9. What do you get out of BIGGA?

Magazine and education. Plus I make good use out of my courtesy card

10. What do you hope to be doing in 10 years time?

Course Manager of a large establishment - 36 holes and above

Wentwood Hills beckons Gary

A former Head Greenkeeper at Wentworth has been appointed by The Celtic Manor Resort to ensure unbeatable conditions for this summer's Wales Open.

Gary Connell will be applying his extensive experience to the upkeep of the 7,403 yard, par 72 Wentwood Hills venue for the biggest prize money tournament ever held in Wales.

Careful cultivation of the course for the next three months will culminate in intensive daily preparation during the PGA European Tour event from June 8-11. Around 50 greenkeepers will be out at 5am each day, stripe cutting the course and raking bunkers, with work resuming at close of play until 10pm.

As Assistant Course Manager for The Celtic Manor Resort's entire golf operation, 34 year old Gary's responsibilities will also extend to the resort's other two championship courses, Roman Road and Coldra Woods.

"The next few months will be something of a baptism of fire, but I'm looking forward to the challenge of helping in an inaugural major competition," he said.

Born in golfing country in Troon, Ayrshire, Gary began his career when



Jim McKenzie (left) and Gary Connell

the former Youth Training Scheme placed him with the local Kilmarnock (Barassie) club at the age of 16 before heading south in 1987 for a decade-long spell at Wentworth, progressing to Head Greenkeeper of the club's Edinburgh course.

After a six month break travelling in New Zealand and Australia - during which he worked on the NZ Open

course at Rennera in Auckland he returned to Scotland as Assistant Course Manager at the Roxburgh club on the Scottish borders.

"Wentwood Hills is the longest course and has the biggest staff I've been in charge of," said Gary.

"It's in fantastic condition and I'm very much looking forward to working on it."

Rolawn expands with more distribution depots

Rolawn (Turf Growers) Ltd has started a five year expansion programme by opening three new turf distribution depots.

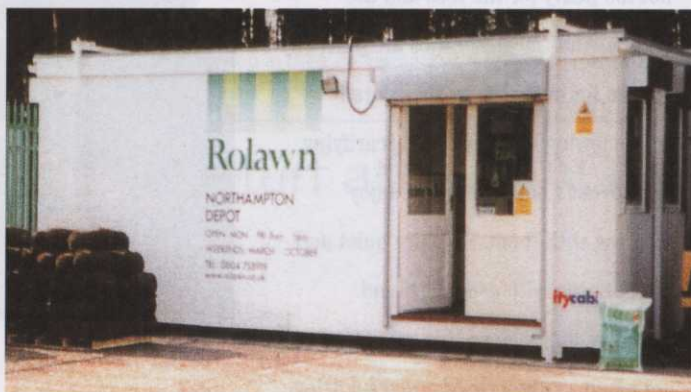
This increases the number of Rolawn Turf Depots (situated throughout the UK mainland) from 15 to 18.

The new Northampton depot situated on the Country Gardens Garden Centre site, HarlestonE Road, Harlestone Heath, Northampton opened its doors for trade at the beginning of March.

The new Newcastle South depot situated at Dobbies Garden World, Durham Road, Birtley, County Durham also opened in March.

The new Crawley depot situated on the Country Gardens Garden Centre site at Handross, East Sussex opened last month.

Rolawn's network of depots have



fresh turf and turf establishment fertiliser available daily on a no minimum order basis, enabling customers to buy as much as they require, from just one square metre to many thousands.

"We are very optimistic about the future of our business and this initial phase is an important step in our expansion programme."

stated Terry Ryan, Rolawn's Sales and Marketing Director.

Mastering a new Golf Degree in Edinburgh

The School of Landscape Architecture at Edinburgh College of Art/Heriot-Watt University has launched a masters degree in Golf Course Architecture.

The School has an international reputation for landscape architecture education and this prestigious new course will contribute to its profile, affirming Scotland's place at the centre of good design for golf.

"There is already evidence of strong market demand for a postgraduate course in Golf Course Architecture. A study commissioned in 1997 identi-

fied potential world-wide demand and primary markets in Norway, Germany, Italy, Switzerland, the People's Republic of China, South-East Asia, South America and the USA," said Professor Catharine Ward Thompson, Head of School.

The MSc course in Golf Course Architecture, the first of its kind, has been developed in conjunction with the European Institute of Golf Course Architects (EIGCA) and is fully endorsed by the Royal and Ancient Golf Club of St Andrews. The aim is to provide an education and qualifi-

cation which sets the benchmark for professional recognition in the field world-wide.

The course will include modules on habitat creation, soil science and course management and will focus on examples of best, and worst, practice from around the world.

The emphasis will be on how to design attractive and challenging courses in harmony with existing landscape processes; an ecological and sustainable approach that reflects the traditional origins of golf course design.