

# Live the American Dream...

## GCSAA Conference and Show, New Orleans, 14-20 February, 2000

GCSAA's 71st International Golf Course Conference and Show will be held in the Morial Convention Centre, New Orleans from 14-20 February 2000.

As in previous years BIGGA is offering you the opportunity to travel on the trip to New Orleans.

The BIGGA party will meet at Heathrow Airport on Sunday 13 February for departure to New Orleans via Chicago at 10.00am.

BIGGA will be able to arrange accommodation for any member wishing to stay overnight before the flight at competitive rates.

The Hotel Monteleone, chosen by BIGGA to accommodate our party, offers excellent facilities and is ideally located in the historic French Quarter.

The GCSAA Conference and Show takes place from 14-20 February with

the trade show on 18-20 February. You will be able to attend the conference seminars and education programmes as well as take in the latest golf course equipment, products and services at the trade show.

### Itinerary

#### Sunday 13 February

All members will assemble at Heathrow Airport and will take the 1000 hours American Airlines flight to Chicago before transferring to a flight to New Orleans. You will be transferred to your hotel for an eight night stay on a room only basis inclusive of private facilities.

#### Monday 21 February

You will be transferred to the airport for your return flight departing New Orleans for Chicago at 1240 hours with transfer to the overnight flight to London arriving at Heathrow at 0620 hours on 22 February.

### Prices

£929 per person based on a twin share. £1389 per person based on single occupancy. Plus comprehensive holiday insurance for the duration of £35.

### Included are:

Return Economy class flights London Heathrow/New Orleans with inflight meals and refreshments; UK and US taxes; transfer from the airport to hotel and return; eight nights accommodation on a room only basis and US accommodation taxes.

Please note: Registration costs for



the Pre-Conference seminars and Education programmes which run from 14-19 February and the Trade Show are not included in the package and bookings will need to be made directly with the Golf Course Superintendents Association of America. Details are available from BIGGA upon request.

Please forward full payment of £964 or £1424 (unless travel insurance is not required) to BIGGA HOUSE, Aldwark, Alne, York YO61 1UF to arrive no later than Friday 10 December; together with name, address and contact telephone number. If accommodation is required for the night of 12 February please advise in order for the hotel rooms to be booked. Payment will be made on checking out of the hotel.



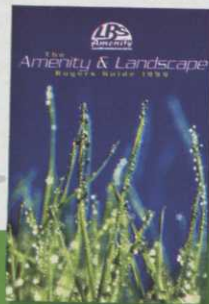
## The grass is **always** greener with LBS Amenity

Thousands of quality amenity & landscape products all in one concise catalogue



To reserve your free copy telephone **01282 873342** or fax **01282 869850**

LBS Amenity • Standroyd Mill • Cottontree • Colne • Lancashire • BB8 7BW • www.lbs-group.co.uk • email: sales@lbs-group.co.uk





# ...or see a little of Canada

**CGSA International Turfgrass Conference and Trade Show. Ottawa, 4-7 March 2000**

BIGGA has established close relationships with the CGSA and a large party of their members attended BTME. For the first time BIGGA is offering a package deal to the annual Conference and Trade Show which will be held at the Ottawa Congress Centre from 4-7 March. Departure will be from Heathrow Airport on Thursday 2 March at 1505 hours, returning from Ottawa on Tuesday 7 March to arrive at Heathrow the following morning. Accommodation will be provided at the Westin Hotel which is one of the CGSA official hotels with excellent facilities.

#### Itinerary

##### Thursday 2 March

Assemble at Heathrow Airport for the 1505 hours Air Canada flight

direct to Ottawa arriving at 1740 hours. You will be transferred to your hotel for a five night stay on a room only basis inclusive of private facilities.

##### Tuesday 7 March

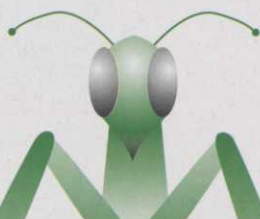
You will be transferred to the airport for your return flight departing at 1900 hours to arrive in London at 0635 hours on 8 March.

Prices are £565 per person based on a twin share. £1141 per person based on single occupancy plus comprehensive holiday insurance for the duration.

Included in the price are return economy class flights from London Heathrow to Ottawa with inflight refreshments and meals; airport taxes; transfer from the airport to hotel and return; five nights

accommodation on a room only basis and Canadian accommodation taxes.

Please note: Registration costs for the Conference and Trade Show are not included in the package and bookings will need to be made directly with the Canadian Golf Superintendents Association. Details are available from BIGGA on request. Please forward full payment of £595 or £1171 (unless travel insurance is required) to BIGGA HOUSE, Aldwark, Alne, York YO61 1UF to arrive not later than Friday, 7 January 2000; together with name, address and contact telephone number. If accommodation is required for the night of 1 March please advise in order for the hotel rooms to be booked. Payment will be made on checking out of the hotel.



## WEED FREE®

• Advice • Application •  
Supply • Training

DRIFT FREE Contract Spraying  
utilising our purpose built machine

The **SPRAYING MANTIS**

Freephone: 0800 068 08 78

Fax: 07000 481022

Car: 0850 300104

Unit 14, Roundshead Drive, Warfield, Berkshire RG42 3RZ

WEED FREE is a Registered Trade Mark

## Lloyds

**Manufacturers of High Quality Mowing Equipment**

120th Anniversary 1878 - 1998



**Lloyds Elite Triple Mower** is the ideal machine for high work rate requirements on golf courses, parks or sports grounds with a cutting performance up to 5 acres an hour designed with today's rigorous conditions in mind. *Now with floating heads and interchangeable vertirake.*

SEE US AT  
**SCOTSTURF**



Award winning **Lloyds Paladin** self-propelled mower gives the finest cut to the finest turf. On bowling greens, tennis courts, cricket squares, golf putting greens etc.

'Playability is seriously affected by the finish of the turf which therefore demands the mowing excellence provided by **Paladin** - now with 11 bladed cylinders and groom front rollers



**Lloyds Leda** mower units are very robust machines designed for prolonged regular use on golf courses, municipal parks or similar landscaped areas.

The standard unit being used for a good finish with regular cutting while the giant is used on rougher areas or where less frequent cutting is required

**LLOYDS & CO. LETCHWORTH LTD**  
BIRDS HILL, LETCHWORTH, HERTS SG6 1JE  
TEL: 01462 683031 FAX: 01462 481964