



The place, the time, the event...

It's almost here – BTME 97, January 22-24. The biggest, the most comprehensive, the most exciting event for 1997! Have you pre-registered yet? See the back of this issue for your pre-registration card.

Fancy a night out?

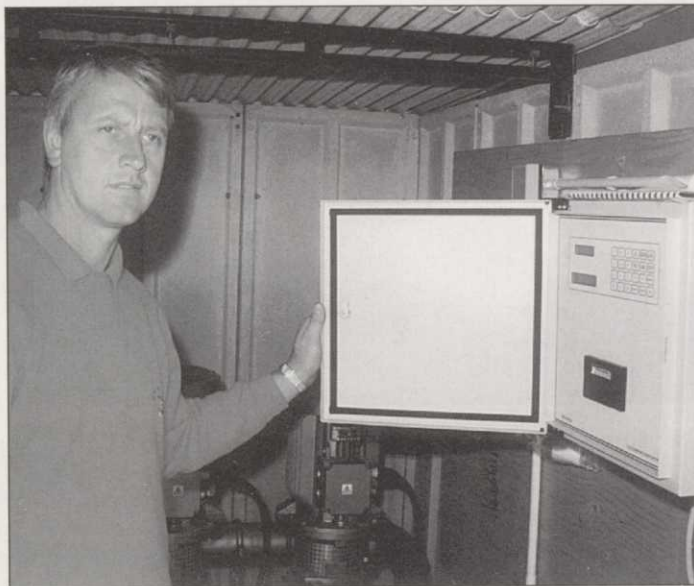
Have you booked your banquet ticket? It's the hottest ticket around for those in the know! Contact Sami Collins at BIGGA HQ on 01347 838581 if you haven't already reserved your ticket to see top comic Bobby Davro and experience the delights of Laine Kennedy's cabaret – all together, a night not to be missed!

Four halls to visit

All 154 companies large and small are primed and ready to talk to you about all that is new in your industry. So what are you waiting for? It couldn't be easier – send your completed registration card back to BIGGA HQ and avoid the queues.

Especially for you...

Are you a Chairman of Green or Golf Course Secretary? If so, register for the course presented by the STRI. The course aims to introduce Chairmen of Green and Secretaries to the practicalities of golf course construction and management. It also includes a visit to the STRI trial grounds and laboratories. Call Sami Collins at BIGGA HQ to book your place.



Andrew Hall of St George's Hill

successful and easy to get out for maintenance, as has all maintenance and draining down.

The TW2/4 controllers have been found to be particularly user friendly and have a good level of diagnostic ability built-in. Programming is very easy and Ian insisted that all important documentation, i.e. user manual and maps, were encapsulated in plastic making them durable even if used with wet or dirty hands. As far as Ian was concerned user manuals are extremely easy to understand. He relies on traditional greenkeeping principles to judge when and how much water to apply and this includes a regular use of probes.

St George's Hill in Weybridge, Surrey

Superseding the original 1970s installation the club's latest system by British Overhead Irrigation Limited has three variable speed pumps, a Photron CIC4 controller, three zones covering the 27 holes and allows for the use of (three) self-travelling sprinklers – with a 200m cable. The heathland courses are extremely free draining however Head Greenkeeper, Andy Hall, uses wetting agent and Toro Hydroject aeration to ensure optimum use of water. This is particularly pertinent as all water is bought from the local water company and stored in a 21,000 gallon butyl lined above ground tank. A key-

stone policy is to keep the system simple, and Andy said this applies to programming the system. Nevertheless the CIC4 which superseded a CIC1 model is extremely flexible. Mr Gerry Wilkins of BOIL suggested perhaps more flexible than any greenkeeper is likely to need. CIC controllers are produced by a 'sister' company. The previous irrigation system only had a single zone and single phase pumps of limited output which meant that it was taking over 14 hours of watering "just to keep the course alive". While the original system was only designed to irrigate 18 greens the addition of 9 holes plus watering of tees (and some banks) called for a radical re-think. The new system has just completed its first season. The system is a constant pressure system, however a time clock maintains a lower pressure during the day and this is increased at night for irrigation. The design pressure is 9.23 kg/cm² – at the lowest point – at St George's Hill there is a variation of about 30m between top and bottom points in the system.

Typically each green has four heads, controlled in pairs, while approaches have three or four, and the tees have from four to six each. All are pop-up gear driven Hunter G600 or G650 heads, full or adjustable part circle. Fairways are covered by three BOIL travelling sprinklers each with an output of 1600 gallons per hour,

these take water from hydrants through 1in. flexible pipes. However, consideration is being given to about putting in a permanent pop-up system for some or all of the fairways. Virtually no hand watering is carried out.

The sophisticated pump control system allows any of the three Grundfos pumps to be set as the duty pump which maintains line pressure – and this can be operated at very low revolutions little more than tick-over so minimising electricity consumption. It is only when demand exceeds this pump's capacity that the other pumps are called in. The variable speed motor controller means that each motor soft starts, avoiding starting under full load and considerably reducing the sudden pressure stresses placed on the whole system but in particular on pipework.

A notable feature of the CIC4 controller is the "duration percentage" function which allows an overall percentage increase or decrease to be made to all watering times, without the need to alter individual settings. Pipework is uPVC solvent welded in sizes suitable to location, some 8 miles of it, and most was mole ploughed in. Ample flush out and drainage points were installed and any section is easy to isolate says Andy.

There were a few small teething problems, but no more than Andy was expecting and these were readily rectified by the supplier. Once the system was set up, fine tuning and operating proved to be quick and simple. Andy said that knowledge with the previous system made using the new one simple.

THE ONE QUESTION I WOULD LIKE TO ASK OTHER GREENKEEPERS IS:



"How much do you earn?"
Terry Crawford, Clandeboye