

# GREENKEEPER

## International

BIGGA TURF MANAGEMENT EXHIBITION  
**BTME<sup>97</sup>**  
 HARROGATE  
 The Number One Choice  
 & EDUCATIONAL SEMINAR PROGRAMME  
 NOW ONLY TWO MONTHS TO GO!



# THE OAKS

From small acorns comes  
 a Yorkshire course  
 destined to  
 be a winner



## NEARLY MEN!

The greenkeepers' team - pictured - recovered from last year's debacle to finish second in the Kubota Challenge. Full report and pictures inside



BIGGA TURF MANAGEMENT EXHIBITION



# BTME 97

**HARROGATE**  
The Number One Choice

& EDUCATIONAL SEMINAR PROGRAMME

# MAKE TRACKS

to BIGGA's Turf Management Exhibition and the Learning Experience, the most comprehensive educational event in Europe in 1997.

See you in Harrogate,  
January 22-24, 1997.

Learning Experience starts January 20.

Don't miss your copy of 'The Learning Experience' in this magazine - and pre-register your place at BTME 97 for FREE by completing the card facing Page 51

For more details, call the BTME Hotline:

**01347 838581**



#### HOW TO GET TO HARROGATE

**BY RAIL:** The comprehensive rail network means you can get to Harrogate very easily. For example, 25 trains run daily from London King's Cross to Harrogate and there are some 15 trains from Edinburgh, 16 from Glasgow and 30 from Manchester

**BY AIR:** Manchester Airport is 56 miles from Harrogate and there's a convenient direct train via Leeds railway station. Leeds/Bradford airport is just 12 miles away from Harrogate

**BY ROAD:** From North and South - A1 exit Wetherby, nine miles from Harrogate. M1 and M62 to Leeds, which is 15 miles away

**BY SEA:** North Sea Ferries, from Rotterdam/Zeebrugge to Hull, 59 miles away.



# GREENKEEPER

International

■ The next edition of **Greenkeeper International** should be with you by **December 7**



**President**  
The Rt. Hon.  
Viscount Whitelaw  
K.T., C.H., M.C.,  
D.L.

**BIGGA BOARD OF MANAGEMENT**

Chairman: Dean Cleaver  
Vice Chairman: Patrick Murphy  
Past Chairman: Barry Heaney

**BOARD MEMBERS**

Richard Barker  
George Barr  
Gordon Child  
Harry Diamond  
David Milbourne

**EXECUTIVE DIRECTOR**

Neil Thomas B.A.

**ADMINISTRATION MANAGER**

John Pemberton

**EDUCATION OFFICER**

Ken Richardson

**SALES AND MARKETING MANAGER**

James McEvoy

**MEMBERSHIP SERVICES OFFICER**

Janet Adamson

**Where to contact BIGGA**

Aldwark Manor, Aldwark, Alne,  
York, North Yorkshire YO6 2NF

Tel: 01347 838581  
Fax: 01347 838864

**NOVEMBER 1996**

**Contents**

**Better – but still only second**

The Kubota Challenge is a firm favourite on the tournament calendar. As Scott MacCallum reports, this year's efforts saw the greenkeepers' team finish in second position – a whole lot better than last year's disastrous last place.....**Pages 33-34**



**Plea for a return to traditional links**

The Architect's Conference at Wentworth featured a clarion call from Donald Steel for more support for greenkeepers to preserve golf courses in the traditional manner.....**Page 11**

**Irrigation equipment in the spotlight**

Hugh Tilley poses questions about current irrigation equipment to the people who know them the best – working greenkeepers, on courses throughout the country.....**Pages 15-20**

**From little acorns comes... The Oaks**

Mix together an excellent piece of farmland, a superb location and attention to detail and you will have a course like The Oaks in Yorkshire. Scott MacCallum reports..... **Pages 36-37**

**Regular features**

**BIGGA in focus** Neil Thomas explains why there is no better time to join the Association and why existing members can renew with confidence.....**Page 4**

**News** Jobs boost for John Deere dealer... Optimism for great careers... How Bangkok GC coped with a massive flood... plus the first in a series of cartoons highlighting the benefits of BIGGA membership.....**Pages 5, 7, 9, 10**

**Letters** Why the chase after perfect colour continues to frustrate greenkeepers... an ecological view on trees and heathland courses... training courses that are true value for money... and a call for no compromise on presentation.....**Page 14**

**Cover**

The Oaks in Yorkshire and, inset, the greenkeepers' team from the Kubota Challenge. Pictures by Scott MacCallum

**FREE READER REPLY SERVICE**

Use the post-paid Reader Reply Card facing Page 2 for further information on the products and services advertised in this issue. Just state the companies' Ad Ref numbers, post the card to us and we'll arrange for further information to be sent to you direct.



**ADVERTISERS' INDEX**  
a quick reference guide

	Ad Ref	Page
Charterhouse	130	25
Cleveland Sitesafe	56	10
Eric Hunter	73	13
Glen Heat	280	18
Hardi	25	21
Hayter	90	52
Levingtons	102	29
Lindum Turf	38	13
Links Leisure	493	8
Marlwood	501	10
MJ Abbott	296	29
MJT Contracts	382	13
North Staffs	217	18
Ocmis	360	17
Pattissons	35	8
Rhône Poulenc	59	51
Rolawn	34	8
Service Chemicals	304	32
Sports Ground Irrigation		
	491	16
Standard Golf	421	29
Terra Firma	534	32
Tillers	292	9
Ultra Plant	473	38
Watermation	33	16
Weed Free	504	35
Buyer's Guide		40-44
Classified		45
Job Shop		45
Recruitment		46-49

**GREENKEEPER**  
International

is the official monthly magazine of the British & International Golf Greenkeepers Association

**EDITORIAL**

Editor: Scott MacCallum

**ADVERTISING**

Sales and Marketing Manager: James McEvoy  
Sales and Marketing Executive: Louise Lunn  
Sales and Marketing Assistant: Amanda Freeman  
Telephone: 01347 838581  
E-mail: general@bigga.co.uk

**PRODUCTION**

Design and Production Editor: Tim Moat, telephone 01904 610611  
E-mail: timmoat@headline-comm.co.uk

**PRINTING**

Hi-Tec Print, Unit 7, Universal Crescent, North Anston Trading Estate, North Anston, Sheffield S31 7NZ  
Tel: 01909 568533, fax: 01909 568206

**Greenkeeper International: winner of Certificate of Merit in Magazine of the Year category, Editing for Industry Awards 1994 and 1995**

Contents may not be reprinted or otherwise reproduced without written permission. Return postage must accompany all materials submitted if return is requested. No responsibility can be assumed for unsolicited materials. The right is reserved to edit submissions before publication.

Although every care will be taken, no responsibility is accepted for loss of manuscripts, photographs or artwork. Opinions expressed are not necessarily those of the Association and no responsibility is accepted by the Association for such content, advertising or product information that may appear.

Circulation is by subscription. Subscription rate: UK £34 per year, Europe and Eire £44. The magazine is also distributed to BIGGA members, golf clubs, local authorities, the turf industry, libraries and central government.

ISSN 0961 - 6977  
© 1996 British & International Golf Greenkeepers Association

**WIN** £50 CASH IN OUR BUYER'S GUIDE COMPETITION: TURN TO PAGE 40

**ADVERTISING WORKS IN GREENKEEPER INTERNATIONAL:**

“The Buyer's Guide has brought us a steady number of enquiries. We have found the response to be of good quality, in numbers, and feel that the Guide is effective in reaching the end user”

– MIKE FRANKLIN, National Sales Manager, Boughton Loam/Turf Management Systems

**FOR MORE DETAILS CALL:** James McEvoy, Louise Lunn or Amanda Freeman at BIGGA HQ on 01347 838581.

**Greenkeeper Education and Development Fund**

The Fund provides the key to the future for greenkeeper, golf club and game. Individuals and companies can join the Golden Key Circle and Silver Key Circle. For details, contact BIGGA on 01347 838581.

**GOLDEN KEY CIRCLE COMPANY MEMBERS:**

- Hardi Ltd • Hayter Ltd • Hepworth Minerals & Chemicals Ltd
- Jacobsen E-Z-Go Textron • John Deere Ltd • Kubota UK Ltd
- Levington Horticulture Ltd • Miracle Professional • Mommersteeg International • Ocmis Irrigation UK Ltd • H Pattisson & Co Ltd
- Ransomes, Sims & Jeffries Ltd • Rhône Poulenc Amenity • Rigby Taylor Ltd
- Supaturf Products Ltd • Lely UK Ltd (Toro Commercial Products)

**SILVER KEY CIRCLE COMPANY MEMBERS:**

- Avoncorp Amenity Products • Fenchurch Insurance Brokers Ltd • Rolawn Ltd
- Sisis Equipment Ltd



BIGGA TURF MANAGEMENT EXHIBITION  
**BTME97**  
HARROGATE  
& EDUCATIONAL SEMINAR PROGRAMME

Don't forget to pre-register for BTME 97 – complete and return the pre-paid card facing Page 51. Do it today!

# The brotherhood of greenkeepers

It's mid-November, bleak, depressing, not a favourite month. Through your letter box comes another invoice but one with a difference for this one is headed "BIGGA". Yes, it's membership renewal time again. To digress slightly before returning to the main theme, I have recently been reflecting on the great success of the inaugural Hayter International Cup competition where 24 competitors from around the globe played a stirring cup match and over a period of five days communicated and bonded in such a way that enduring friendships have been made. For Kim Macfie and Tony Bourke at Hayter as well as for myself, it was a wholly rewarding experience to see at first hand this coming together of individuals from many lands and diverse professional circumstances through the brotherhood of greenkeepers.

I use the word "brotherhood" advisedly as surely in many ways this is what BIGGA represents for our members. Defined in the dictionary as "members of association for mutual help", perhaps we have in the past been guilty of not emphasising enough this essential part of BIGGA membership. Never was it more needed than in today's greenkeeping world. The intolerance of society in general has pervaded this world and many of our members are increasingly put under pressure and find themselves in stressful situations. Our first recourse is to provide practical benefits to assist them in such circumstances, the legal and stress helplines immediately come to mind. The recent extension of the legal services to members through assistance from the Association's solicitors in appropriate cases represents a "first" for BIGGA. Hambro Legal Protection do not know of any similar professional body offering such a service to its members. It truly represents a substantial benefit of membership. The introduction this year of the transition package for the unemployed greenkeeper is another example of our concern for the member experiencing one of life's most difficult circumstances.

Briefly then I have touched on some of the practical benefits of



## BIGGA in focus

BY NEIL THOMAS

membership the details of which can be found within the pages of this month's magazine. Let's look more closely though at this concept of brotherhood. Mutual help can be made available in so many ways, most often perhaps in simple, social networking. Picture the scene and a common one it is for BIGGA members. You have enjoyed a good round of golf in your section competition, the catering has been excellent and now you have retired to the bar. I have never known it otherwise than that conversation turns inevitably to greenkeeping. So many greenkeepers have come away from such conversations with either a tip to help them in their daily tasks or with a solution to what seemed at the time an intractable problem. Mutual help at its most distinctive I would venture to suggest.

BIGGA's main brief has been and remains the education and training of greenkeepers. Members enjoy the benefits of heavily subsidised training courses, subsidies made possible through the operation of the Education and Development Fund which enjoys the support of companies and individuals throughout the industry and the profession. Too often

members take that support for granted. It is not theirs as of right and recognition of and appreciation for it needs to be more readily given. Through such training once again mutual help is available – greenkeeper can speak to fellow greenkeeper either through a formal lecture situation or in subsequent question and answer sessions and informal discussion.

Finally on the subject of mutual help I mention again the intolerance of society. This indeed pervades so many golf clubs in this day and age. The course condition is all important. If that condition falls below the perceived standard required by club committees and members, the greenkeeping staff are immediately, and quite literally, in the firing line. Key issues such as level of maintenance budget, provision of equipment and particularly in 1995 and 1996 prevailing drought conditions are conveniently ignored as the rumble of discontent grows into a roar. While the greenkeeper can utilise BIGGA's practical benefits in such situations, he often has a need for advice from his peer group and within BIGGA there is always a friend he can turn to or an influential figure who will lend support.

The brotherhood of greenkeepers can therefore be seen to be increasingly important. It manifests itself within BIGGA and all that BIGGA has to offer. To remain on the outside is always a choice open to the individual greenkeeper but I would argue that it is leaving that individual increasingly vulnerable and isolated. The old adage applies to BIGGA that there is strength in numbers and today BIGGA is strong with over 6000 members and recognised within the game

as one of golf's leading professional bodies. It is true that those of us working within BIGGA share a sense of frustration that the Association still has to convince greenkeepers on the outside who cannot or will not see the benefits, both visible and invisible, of BIGGA membership. BIGGA is committed through its Constitution to promote the welfare of greenkeepers and this it will most surely continue to do. Its Mission Statement declares that "BIGGA is dedicated to the continuing professional development of its members and in serving their needs will strive through education for standards of excellence in golf course management throughout the greenkeeping profession".

There are therefore compelling reasons for members to renew their membership and for non-members to join our vibrant Association. There has never been a better or more apposite time to renew or apply for membership. If you are joining, welcome to BIGGA, if you are renewing, we appreciate your commitment and confidence as we move forward in a spirit of optimism.

I will conclude this month with some words of Charles Dickens from *A Tale of Two Cities* which give food for thought and which are worth dwelling upon. A case perhaps of 'a tale of two greenkeepers'? It remains my conviction that greenkeepers have everything before them if they continue to move forward united and purposefully, with dedication to their profession and commitment to the ideas and aspirations of BIGGA. The alternative is indeed a gloomy prospect and not to be countenanced. As a greenkeeper which direction are you set upon?

"It was the best of times, it was the worst of times, it was the age of wisdom, it was the age of foolishness, it was the epoch of belief, it was the epoch of incredulity, it was the season of Light, it was the season of Darkness, it was the Spring of hope, it was the Winter of despair, we had everything before us, we had nothing before us, we were all going direct to Heaven, we were all going direct the other way".

## Reason to enter competitions...

The winner of the holiday voucher prize at BTME 96 sent a postcard to BIGGA Headquarters from Menorca showing that if you just take the time to enter competitions rewards can follow.

Russell Lucas of Hazlemere Golf

and Country Club and his family spent a week at the resort of Cala en Bosch in late September and reported that while weather was mixed the children were having a brilliant time in the pool while he and his wife tried to relax.

It could be you next year!

## As I see it...

BY DEAN CLEAVER  
BIGGA CHAIRMAN

**T**his has been one of the quieter months I've had since becoming Chairman and I've actually been able to get some work done on my course. In fact the joke is that I had to dig out the A-Z to find my way to the club. I made the most of it though and did some vertidrainage just to show the membership that I'm still about!

It hasn't meant that I have been totally quiet however.

I attended the British Institute of Golf Course Architect's Silver Jubilee Conference at Wentworth. The dinner was certainly a unique occasion with many familiar faces from the golf world gathered in the stunning surroundings of Wentworth's Ballroom.

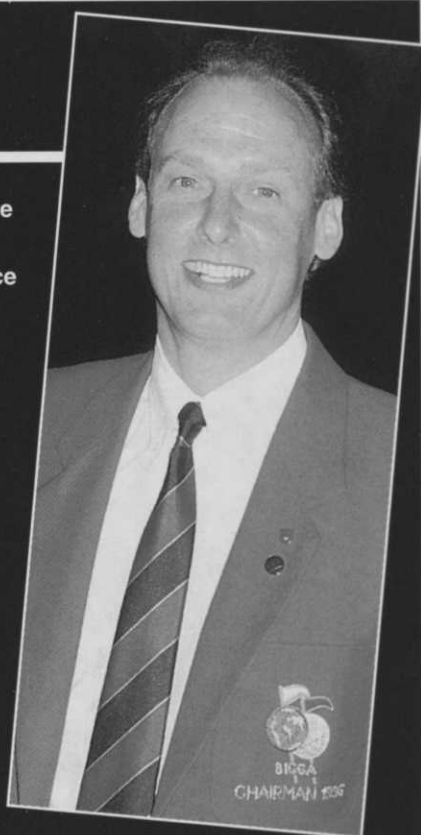
Although I had to miss the actual conference I understand it was superb and the role of the greenkeeper and work of BIGGA was highlighted by many of the speakers. Howard Swan who organised the Conference wrote to me and thanked BIGGA for supporting the event.

After Wentworth it was on to The Belfry for the annual Kubota Challenge, one of the highlights of the year.

After coming fourth and last last year it was better this as we got to the final only to be beaten by the English Golf Union, who won for the second successive year.

Now I'm not one to carp, and each one of the eight men who represented us in the final was a superb ambassador for BIGGA, but I do believe that if a 10pm curfew had been in place the night before the final the result may have been different. I curse the fact that I was unable to arrive a day earlier to supervise preparations for the final. Joking aside it was a wonderful event and I'd like to congratulate Rene Orban on his excellent Kubota Challenge debut.

At the moment I'm preparing for a trip to Interlachen in Switzerland for the International Greenkeepers Association Conference. I'm attending in my capacity of Chairman of FEGGA. I'll report back on my time in Switzerland next month.



# NEWS



## Jobs boost for new John Deere dealer

Nairn Brown Ltd at Busby, near Glasgow, is the latest recruit to John Deere's nationwide grounds care dealer network – the first time a main John Deere dealership has been established in the west of Scotland.

The appointment increases the opportunity for professional and domestic customers from Oban to Dumfries to invest in John Deere's full range of commercial and consumer equipment.

Dealer principal Nairn Brown founded the business in 1965. Nairn Brown Ltd was the Mountfield distributor in Scotland for 20 years, and several of the key staff have been with the company for over 25 years.

"We see the John Deere range as a way of extending and developing our customer base," says Nairn Brown. "Around half our current business is with local authorities and golf courses.

"Staffing levels will be increased to provide full sales, service and parts back-up to all

our customers. We carry 18,000 parts in stock, and are computer-linked to John Deere's worldwide Distribution Network System."

The company has been accredited to ISO 9002 certification since 1993, one of the few grounds care dealerships in the UK to have achieved this international quality standard.

● Pictured: Nairn Brown staff celebrating the new deal.

■ The Good Director 96 and 97 for Golf Owners Operators and Developers is now available from Golf Business Communications Ltd, 5/7 High Street, Dorchester-on-Thames, Oxfordshire, OX10 7HH priced £15.

The second edition contains the names and details of over 700 companies and there are more than 4,100 entries under the product and service group headings.



**Hardi Ltd**

**Hayter Ltd**

**Hepworth Minerals &  
Chemicals Ltd**

**Jacobsen E-Z-Go Textron**

**John Deere Ltd**

**Kubota UK Ltd**

**Levington Horticulture Ltd**

**Miracle Professional**

**Mommersteeg International**

**Ocmis Irrigation UK Ltd**

**H Patisson & Co Ltd**

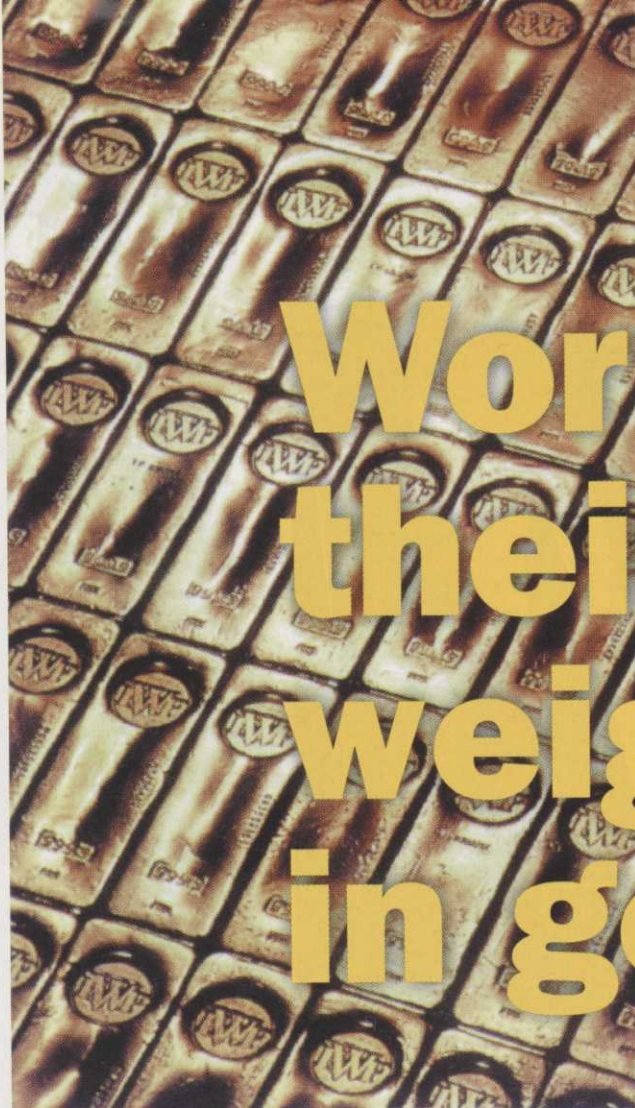
**Ransomes, Sims &  
Jeffries Ltd**

**Rhône-Poulenc Amenity**

**Rigby Taylor Ltd**

**Supaturf Products Ltd**

**Toro**



**Worth  
their  
weight  
in gold**

On behalf of the game of golf and of greenkeepers everywhere, BIGGA would like to thank members of the Golden and Silver Key Circles, both companies and individuals, for their commitment to a brighter future through their support of the Education and Development Fund.

Their support can be seen in a variety of educational and training opportunities, books and videos.

We share a common goal.

Together we're creating better golf courses – and dedicated professionals to maintain them.



**Avoncrop Amenity Products**

**Fenchurch Insurance Brokers Ltd**

**Rolawn Ltd**

**Sisis Equipment Ltd**



**BIGGA**

**...and  
in silver**

# Environment competition winner nets £5,000

As reported in last month's magazine Rudding Park, in only its first full year as an operating golf course, clinched the Amazone Golf Environment Competition. Mark MacKanes, Managing Director of the golf course received the £5,000 first prize from Rod Baker, Managing Director of Amazone Ground Care at a presentation at Rudding Park last month.

Other winners in the competi-

tion this year were as follows: Northern Region: Rudding Park Golf - Winner; Catterick GC - Highly Commended.

Midlands Region: Lindrick GC - Winner; Arscott GC - Highly Commended.

Southern Region: Liphook GC - Winner; Wilderness GC - Highly Commended.

Western Region: Manor House GC - Winner; Burnham and Berrow - Highly Commended

Wales: Cwmrhydneuadd GC - Winner

Eastern Region: Old Nene G&CC - Winner

Scotland: Linlithgow GC - Winner; Newtonmore GC and Royal Dornoch GC both Highly Commended.

● BIGGA's Executive Director, Neil Thomas, happened to play Cwmrhydneuadd the week after the presentation and can vouch for its excellence.



Six information boards have been erected at Rudding Park, covering aspects of their flora and fauna

# Optimism for 'great' jobs on golf courses

Great job opportunities still exist on golf courses in spite of the continued march of mechanisation. That's the optimistic view of Walter Woods, former links supervisor at St Andrews Links.

Speaking at Scottish Grass Machinery's turfgrass seminar held at Gleneagles, Walter pointed out that much had changed during his lifetime in the industry.

"People now expect to be able to play golf all year round and in all weathers, creating major difficulties with compaction and course wear and tear," he said. "Although specialist machines are now available to help combat the problem, they are becoming increasingly complicated to set up, use and maintain. The ever growing sophistication of equipment virtually demands the full-time employment of a trained and dedicated engineer to look after it.

"There is also a requirement for qualified irrigation technicians to help look after pumps, control systems and the associated water delivery systems. There must be a fortune in materials buried underground."

Walter pointed out that it was

20 years since the various authorities had recognised that greenkeeper education would have to be a priority if the standard of golf club management and maintenance was to move forward.

"I was fortunate that my position at St Andrews allowed me to bring young trainees onto the links to further their training," he commented. "Our mission was helped greatly by colleges such as Elmwood, the greenkeepers' associations and the golf unions, who helped promote the need for education to be extended beyond a basic first year."

Such has been the march forward in technology and standards that greenkeepers today need to be assessed on a regular basis in both the practice and theory of their job. The more enlightened are now able to study to become supervisors and, if they are high fliers, can move on to an HND course which can lead to a golf course manager's position.

"There is a clear and growing demand for more advanced education and training," pointed out Mr Woods. "New courses continue to be built and these will be looking for advanced greenkeep-

ing skills and knowledge. At the same time, the older courses will have to sit up and take notice in order to compete with the growing challenge to provide the highest quality playing conditions throughout the year."

Walter predicted that the staffing levels on many private golf clubs will double over the next 10 to 20 years in order to provide the conditions that golfers want. As a result, greenkeeping career prospects look extremely good, with better pay and better conditions backed by a strong association which will help look after the interests and needs of all involved in the industry.

"I admit that I could not handle all the education nor the machinery that greenkeepers need today," stressed Mr Woods. "However, I believe that golf clubs are really starting to appreciate the value of their maintenance staff and their needs and problems. The educational opportunities are being put in place to help greenkeepers achieve perfection and I believe that many are well on the way to getting there.

"There will be a wide range of greenkeeping career opportunities in the years to come and I see no reason why they should not be grasped by young men and women alike."

## Thanks from Don Hunt

Don, Liz and the girls would like to take this opportunity to thank all those friends who so kindly phoned or sent cards, letters, flowers or fruit during my recent illness. I apologise for not writing personally to all concerned but the strength of the support has been so great

it was impossible.

A big thank you to Bill and Carol Pile and Gordon and Marion Childs who visited me in Torbay hospital and kept me in touch.

See you soon on my usual route.  
Don

**(mis)adventures of Gordon the Greenkeeper**

Faulty goods? Do you know your rights?

The **LEGAL HELPLINE** can advise you

Greenkeeper Members call the LEGAL HELP LINE for FREE advice  
English Law: 01206 867775 Scottish Law: 0141 332 2887

Yet another benefit of **BIGGA** membership

# G

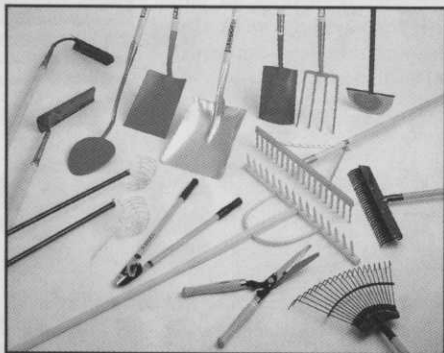
## GOLF COURSE EQUIPMENT



100 YEARS OF EXPERIENCE SUPPLYING THE GOLFING INDUSTRY WITH PRODUCTS FOR:

- THE TEE
- THE FAIRWAY
- THE GREEN
- THE CLUBHOUSE
- THE GREENKEEPER
- THE DRIVING RANGE
- THE PUTTING GREEN
- TURF MAINTENANCE
- EUROPEAN SPECS

A full selection of tools for the greenkeeper and groundsman are available to maintain your courses and hopefully make life a little easier for you!



With 100 years experience in supplying Golf Course Equipment...  
**...Why go anywhere else?**

If you require further information on any Patisson product or service, or you require your own copy of our current Catalogue and Pricelist please telephone

sales desk  
**01582-597262**



AD REF 35

# PRO-TEE ALL-WEATHER GOLF MATS

Take a closer look at these features:

- Natural feel all-weather surface
- Available in two sizes
- Protects the natural grass
- Suitable for right or left handed players
- Weatherproof, solid & stable
- Peg retention system that will not clog up with broken tees
- Special levelling devices

Constructed using a robust and durable glass reinforced cement base and three individually replaceable turf sections - which have 12mm rubber shock pad backings - the PRO-TEE all-weather golf mats are ideal for both course and practice ground use.



AD REF 493

## LINKS LEISURE

Find out more by contacting Links Leisure today

**LINKS LEISURE LIMITED**  
Unit 22,  
Civic Industrial Park,  
Whitchurch, Shropshire  
SY13 1TT  
Tel: 01948 663002  
Fax: 01948 666381

**Rolawn (Turf Growers) Ltd**

# Rolawn®

announce Britain's best ever greens turf deal

## TOP QUALITY MINSTER GREENS TURF

Minster Greens turf is produced from 80% Bargreen or Barcrown (fescue) and 20% Bardot (bent)

## THE UK'S BEST PRICES WE WON'T BE BEATEN!

During Autumn and Winter 1996 we **WILL** beat any like for like quotation for greens turf - from ANY turf grower

## NO MINIMUM ORDER - 24 HOUR DELIVERY

To see a sample, check a price or place an order ring Rolawn's field sales team:

South East England	Andy Church	0850 905377
Midlands/South West/South Coast	Graham Mace	0850 222043
Scotland/North East England	David Cunninghame	0860 735525
Central/Northern England	David Franks	0850 048882

**OR CALL ANY ROLAWN DEPOT**

AD REF 34



# Bangkok Golf Club at sea in worst flood in golfing history

Don Major, formerly of Betchworth Park GC, had some interesting reading when he returned from Hong Kong on a Cathay Pacific flight earlier this year.

In the *South China Morning Post*, which thankfully for Don is in English, was a report on the horrific flooding experienced by the Bangkok Golf Club and their Course Superintendent Chan Mekavichai.

"I couldn't believe the flooding that the golf club had experienced

and I thought readers of *Greenkeeper International* might want to read about it as well," said Don.

Reports the *South China Morning Post*: "It probably has to go down as the worst flood in golfing history," said American Greg Jerolaman, who doubles as General Manager and Professional.

A mere 90,000 sand bags could not prevent a dyke and a 12 inch thick concrete retaining wall bordering the 7th hole from collapsing under the sheer weight of

pressure of the rain that had fallen incessantly for eight weeks.

Over the next 24 hours in the region of two million cubic metres of water (about 20 cubic metres per second) poured on to the course, which had been closed for three days due to the non-stop downpours.

"It was terrible. There was nothing we could do except watch the water level rise," said Chan. As it rose by between 10 and 15 centimetres per hour, Chan led the frantic rush to reinforce the clubhouse by placing a further 5,000 sand bags around its perimeter.

The defence was neither high enough nor strong enough. At 5.30pm some seven hours after the flood gates had opened the water burst through. Fearful for the safety of the staff the clubhouse was abandoned. Ten minutes later the basement was under one metre of water.

Returning to survey the wreckage the next morning in boots rented from the military, it was doom and gloom. The average

depth of the water on the course was eight feet. In some areas it was 11 feet. "It was surreal. Everyone was in a state of shock," said Jerolaman.

For two months it was only possible to reach the clubhouse by boat...

For a four month period leading up to the reopening on the last day of March this year 200 labourers joined club staff working 12 hour shifts clearing the debris and irrigation system and 20,000 metres of drain liners, constructing a new 8,000 metre cart path, Re-grassing 16 greens and planting 200,000 square metres of grass, 10,000 flowers and 1,000 trees..."

It is understood that just 20% of the work was covered by insurance and the bulk of the \$4 million had to be met by the Club President.

Many thanks to Don Major for bringing this harrowing tale to our attention and perhaps allowing us to put our own problems in perspective!



The amphibious Watermaster dredger 'walked' into the lake to clear it of weeds and reeds before dredging it

## ...but clear water adds praise for St Pierre GC

Land and Water Services, the Surrey based inland dredging contractor and lake builder, was responsible for much of the excellent praise heaped on St. Pierre Golf Club, Chesham during the Solheim Cup.

The work done by the company involved dredging and restoration of the existing 11 acre lake and construction of a new reservoir to hold 22 million litres of water.

The first stage of the work was to completely redefine and landscape the lake edge, using

a Nicospan geotextile to support the fill material. This, together with clearance of the weeds, detritus and debris, has returned the lake to a focal point of outstanding natural beauty.

To prevent further weed growth the lake was deepened in places by up to one metre. Extreme care had to be taken at all times in order to cause as little disturbance as possible to the wildlife of the lake, one family of nesting ducks posing a particular problem.

### FLYING DIVOTS

County Crops have added Brian Spencer to its team of reps. Brian who will cover the North Yorkshire/Tyneside area and will allow the greenkeepers of the area to take advantage of the 24 hours chemical service.

Sports Ground Irrigation, the Hunter distributors and

Tonick watering, have signed a marketing agreement to promote "Winwater" control systems.

Winwater is compatible with Toro Sc1000 and 3000 Controllers and this agreement enables both SGI and Tonick to have access to new stand-alone systems.

Now's the time  
to do  
something  
about your  
bald patch

After another year of wear and tear, and difficult weather conditions, are your tees looking a bit thin on top?

Tillers Arena is a high quality, hard-wearing turf, suitable for restoring tees to their former glory. And getting them back into play quickly. 350 Greenkeepers chose Tillers last year, why not make it your choice this year?

For more information about our service, our products and our delivery, please phone 01652 650 555.

**TILLERS**  
g r o w e r s o f f i n e t u r f



AD  
REF  
292

# Keen-to-learn staff receive top training

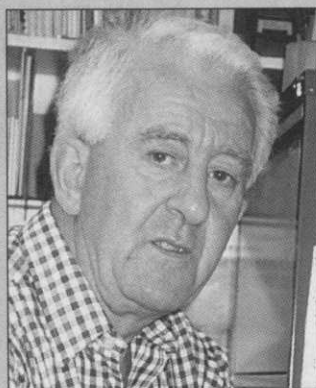
A series of product training sessions has been held for the whole of the workforce at Ransomes' European headquarters and manufacturing centre at Ipswich.

Designed to give all Ransomes' staff an insight into the design, operation and various applications of the company's professional grass and turf care machinery, the familiarisation sessions are an integral and essential part of the programme being followed by Ransomes in order to achieve an 'Investors in People' award.

A total of eight training sessions have been held at the Ipswich factory during the past six weeks. Attended by 400 staff, the sessions were split between the company's range of golf

course equipment and machines used primarily for local authority and contract grounds maintenance.

Leading the training was Ransomes' Product Training Manager, Nigel Church: "The interest and attention paid by staff from all departments demonstrated that they are keen to learn about the products that they help build and the company for which they work," he commented. "Seen from both the human and the commercial points of view, it is important that everyone understands and appreciates what the company does and where they fit into the operation. It can only help instil greater pride in their work and further boost Ransomes' position within the industry."



## Ecology section's leading expert at the helm

PSD Agronomy Ltd has responded to the call for a better understanding of conservation issues on golf courses, by securing an arrangement with Michael Schofield. A former director of English Nature, Michael, pictured, is to head PSD's new ecology section. This follows PSD's recent recruitment of David Rycroft, hydrologist, and continues the policy of providing a package of high quality, expert consultancy to the golf club.

Michael Schofield is a career conservationist, who has worked for the Nature Conservancy, the Nature Conservancy Council and English Nature over a period of 30 years, making his way from Warden Naturalist to

Member of the Management Board. He is, therefore, well versed in both the theory and practice of ecological management, and the implementation of sound policies.

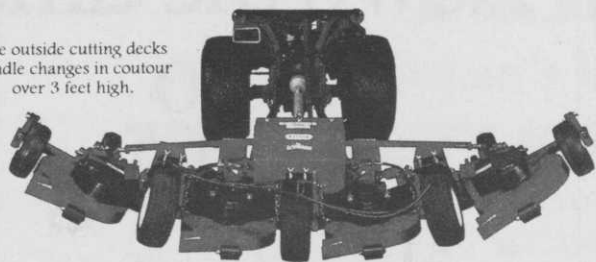
Mike also understands the problems of the golf club committee member. Having been Chairman of Green at his own Club for a number of years he has had a good view of what some see as the other side of the fence. His links with golf extend further than one club though - he has prepared plans for good ecological management for a number of others, and has advised the R&A, the EGU and the European Golf Association on conservation matters.

### The Articulator

LasTec

## INCREDIBLE FOR WHAT THEY DO

The outside cutting decks handle changes in contour over 3 feet high.



Articulators from LasTec offering the highest quality finish cut of any rotary mower at any price

- Precise length •
- Better grass distribution •
- Better wet grass cutting •
- Better lift • Less Compaction •
- And of course, No Scalping

**STRONGER • LIGHTER • TOUGHER • BETTER**

**EVEN BETTER FOR WHAT THEY ARE**

## Marlwood Limited

Court Lodge Farm, Forge Lane, East Farleigh  
Maidstone, Kent, ME15 0HQ, England.

Tel: (01622) 728718 • Fax (01622) 728720

AD  
REF  
501

## NEW SITESAFE

MODULAR SYSTEMS



...make all the difference to secure storage & accommodation units.



GARAGE



PAVILION



WORKSHOP

For further information  
please contact:

Irvine Weston on Tel: 01427 752058 or  
Cleveland Sitesafe Ltd. Park Farm,  
Dunsdale, Guisborough,  
Cleveland. TS14 6RQ.

Tel: 01642 475009 or Fax: 01642 471036.



AD  
REF  
56



Lined up for a great debate: The second day forum

**Donald Steel made this plea during the Architect's Conference at Wentworth**

**“W**e need to help greenkeepers and committees preserve golf courses in the traditional manner.”

That was the clarion call of respected golf course architect, Donald Steel, at the at the Silver Jubilee Conference, sponsored by Barenbrug, of the British Institute of Golf Course Architects held at The Wentworth Club last month.

“Heavy handed fairway irrigation alters the terrain. Everyone should be aware of the problems of fairway irrigation,” he said.

“The phrase ‘beautifully lush’ is one which grates and colour is no guarantee of quality. You must remember that a watered course is a longer course which is not what the members want,” he told delegates.

He called for law makers to provide help for greenkeepers and committees by giving a stronger lead when it came to controlling the ball and the clubs.

#### **USGA Guidelines**

Another issue discussed at the conference was that of USGA guidelines on green construction with Jim Moore, of the USGA, stressing that they where not actually “specs” but guidelines.

“We are often asked why do we change the guidelines. Well we are always looking for weaknesses in the guidelines so we can amend them. We learn and change rather than decide that we are perfect and not change it.”

He revealed that most clubs which claim to have USGA greens do not, in fact, meet the guidelines and he said that they would like to drop hydraulic conductivity from the guidelines.

#### **More New Courses**

The boom in golf can be reflected by the fact that over 1,000 golf courses will open worldwide in 1996 – the greatest number in history – revealed Geoffrey Cor-

# ‘Let’s get back to traditional links’

nish, a highly regarded American architect.

With 503 of these opening in the States and the rest throughout the world it is good news for greenkeepers looking for future career opportunities. It has also, as Jim Moore explained, created a new profession – the Grow In Superintendent, who spends six months on a course before moving on to his next project.

On the same theme Hamilton Stutt, who can recall travelling to golf courses as a youngster in the back of a car with his father and James Braid, said that he always encouraged owners to appoint the future Head Greenkeeper at

the start of the construction work so he could act as the Clerk of Works and feel a part of the team right from the beginning.

Another point which was raised was the need for Post Construction Manuals so everyone can be made aware of the materials which were used during construction and therefore what is required to maintain greens etc. It would be particularly useful in continental Europe.

#### **Fungicide Bans**

BIGCA Associate Member Tom Mackenzie, predicted that within 10 years fungicides would be banned and fertilisers and water

rationed and that change is going to be forced on the committee.

“Architects are going to be required to design courses to be played under the conditions which prevail if this does happen,” he explained.

This would involve designing greens to accept the running shots which will be need to succeed in the firm fast conditions.

#### **Presentation**

Hamilton Stutt, Peter Harradine on behalf of his father Donald Harradine, who died a week before the Conference, Eddie Hackett, Geoffrey Cornish and Dr Martin Hawtree on behalf of his father Fred Hawtree were all presented with Gold Medals by the Institute in recognition of the work they had done.

#### **New Federation**

A Federation of European Golf Course Architects was formed during the Conference with the coming together of the three professional organisations in golf course design in Europe.

AGFA, BIGCA and ESGA formalised their relationship in the formation of the Federation to progress towards a single voice in the European Golf market.

Representing almost 100 architects in practice the Federation will lobby on matters such as ecology, safety planning, education and so on to governments and administrative organisations.



Signing papers to establish the Federation of European Golf Course Architects

# A blending of the seasons

**N**ovember – dark mornings, frozen locks, flat batteries, solid white ground, numb feet, wet gloves, diesel soaked fires, steaming trousers, grey gloom, dirty oil drums with thin ice floating on top, cold, bright moon shining through the bare trees.

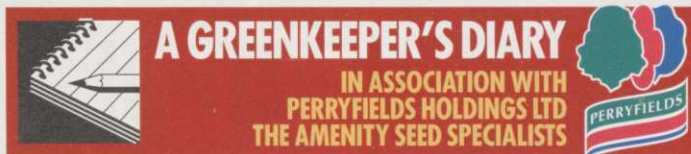
Is my mind playing tricks or were Novembers really like that? I can recall one when it was impossible to move the hole for three weeks but now it seems that I am unlucky if a frost lasts more than three hours. On checking my 1994 and 1995 diaries I find no mention of temporary greens. Instead it reads mowing fairways once a week, 14mm. Fairways! – November! – 14mm! I remember when my gang mowers used to go down to the council yard in October and would not be seen again until April. It seems that the seasons no longer obey their cosmic laws. They have not so much shifted as become fuzzy at the edges. It is difficult to tell where one starts and another begins. Autumn could last well past Christmas and spring can simply not happen at all.

So, what about November this year? The only thing for certain is that I will have a plan and I will have a contingency plan, for who can tell?

## ROUTINE MAINTENANCE

The single most important operation I do all year is spray for worms. On our ground it is essential. I will spray Carben-dazim to greens, tees surrounds and walk routes. Worst fairways will also be treated. I try to do this as late as possible so that one dose will last all winter and so be more cost effective. Any areas that are heavily infested are sprayed earlier and so may require another hit. When the costs for worm killing were prohibitive I used to spray one run around each green, the walk routes and the winter tees and greens. Since doing one run only up the middle of a worm ridden fairway I now have no trouble getting the necessary funding.

Aeration in November consists entirely of slitting. I do all areas as often as I can which is never as often as I would like nor is it ever enough. I use nine inch knife tines on fairways, walk routes, tees and approaches, six inch knife tines on greens. I prefer these tines as they leave comparatively small surface slit yet open up much more area underground for gaseous exchange, drainage and root development. If ground conditions restrict aeration I concentrate all efforts on walk routes. I would rather do these three times than the fairways once so targeting the slitting on the most compacted ground.



Troublesome diseases are usually dealt with by using a full dose rate of Carben-dazim which means that those greens treated get their worm killing for free. Should Take-All or Anthracnose threaten I dash for the Chlorothalonil which does seem to have some suppressing effect. I once tried to tough it out with Anthracnose and refused to spray. It was like sparing with Mike Tyson – a brave but painful experience not to be recommended.

As you would expect mowing heights on all areas are now a few mms above summer levels with one exception of green surrounds. Varying growth rates of different species in winter can leave them scruffy if left to their own devices so I cut down to 25mm to leave a more open, even and tidy surface during the winter.

One of the most important jobs at this time of year is traffic management. I ban all heavy vehicles from the course when the ground conditions dictate. It is not a good idea to trundle tractors about when you are about to announce the first trolley ban of the year. I have tried various methods to guide golfers over different routes; post and rope, post and chain, hoops and signs of all descriptions but nothing works as well as the humble white plastic strip. It does not rust, rot nor need painting and does not interfere with maintenance operations. It is not obtrusive on the eye and best of all it actually works.

Above ground items are invariably moved by golfers thus leaving a gap for all to trample through. The plastic strip is not movable and seems to throw up an invisible wall which is powerful enough to overcome the physiology of the golfer. I put 30cm strips at three metre spacings right across the front and up both sides of each green to push traffic wider than the normal summer route.

## PRESENTATION

Without the pressure of all out mowing, course presentation takes a high priority. Bunkers are kept edged,

paths hoed and trimmed up. All areas are brushed, blown and raked free of leaves. I tour the course to check the condition of course furniture. This immediately improves the look of the course and hurries up the process of replacement. Any unsightly areas which are due for repair that winter I mark GUR straight away. This has the effect of turning a scruffy cause for complaint into an ongoing upgrading of course standards.

I apply soluble iron at 14 to 18 kg/ha to greens, approaches fairways and tees. This helps improve winter colour while aiding the fight against disease and worms. I try to hand mow the greens at least once a week to present well during the winter months. After a dose of iron I might double hand mow the putting green and first tee or choose a short fairway and double cut with the tee triple, hand mow the tee and the green stripe up the rough with a chain har-

row or brush.

The idea behind this short lived Augusta syndrome on one or two holes is not to show that we can stripe with the best of them or to improve turf conditions nor even to try to increase resources so that we could achieve this all year round. I do it to show members that we can be plain one day and stripy the next but turf conditions have not changed.

No matter how much I dislike the superficial nature of striping I have to admit there is something undeniably alluring about it. However it can so easily be flatter to deceive. Having demonstrated this fact to golfers I hope that they will be more understanding of the need to produce quality year round surfaces and less enamoured by here today gone tomorrow stripes.

## COURSE DEVELOPMENT

There is always a progressive construction programme to improve the facilities offered by the club. Having just read Bob Maibusch's article for October our improvements seem modest in the extreme but I suspect

they are more in line with the average club over here. I intend to refurbish those greenside bunker faces which have suffered in the past two very dry years. I will dig out and completely rebuild the faces so that any sand build up is removed and the finished bunkers move back from the greens to leave a wider traffic route for mowers between bunker and green.

Two or three tees which have had add-ons over the years will be lifted, cultivated and re-turfed to provide a level stance. I use big roll turf for all but the smallest jobs. The time saved by this considerable and will be put to good use installing paths as necessary and carrying out some small scale tree planting schemes. There will be hopefully be some time to move tee irrigation from the middles to the sides of some tees as part of an upgrading scheme.

## MANAGEMENT

As the manager I will be busily communicating with the Club and members at all opportunities. I will be publishing Course News updates and there is a message on the answer phone and notices by the 1st tee every day to give news about the course, temporary greens, trolley bans and tee bookings. There is also a monthly report to the committee which is circulated to all the staff so they too are kept informed of the business of the club.

Like all Course Managers I know that my staff are my biggest asset. November is the month I hold our annual appraisal interviews where we discuss individually their aspirations and review their agreed development programme. Of all the meetings I attend during the year these are the most important. A great deal of time and resources goes into preparation for and the delivery of outcomes of these interviews but the results are well worth it and I recommend them to all.

November of course means bonfires. I like nothing more than to stack up accumulated rubbish both physical and metaphorical and erase it from memory. A good clear out will make room for a more ordered and tidy approach and allow the mind to concentrate on a positive attitude to the future. Just around the corner is another year and everything is possible.



## NOVEMBER

BY KERRAN DALY  
MGC

Salisbury and  
South Wilts GC

A GREENKEEPER'S DIARY IS  
BROUGHT TO YOU IN  
ASSOCIATION WITH  
PERRYFIELDS HOLDINGS LTD  
TEL: 01386 793135  
FAX: 01386 792715



# washed TURF

**StrathAyr**  
**BAyr Root Turf**

Mature turf is harvested into strips and then all soil is removed by the patented

Ideal for all sports:

- Golf
- Football
- Athletics
- Bowls
- Equestrian
- Cricket
- Tennis

StrathAyr BAyr Root Turf washing process.

The resulting vegetative mat, free of soil, has many advantages:

- No impediment to drainage
- Rapid root development, quicker establishment
- No soil contamination
- Eliminates sheer plane, greatly reduces divoting

- Lighter weight
- Easier to handle & lay



West Grange, Thorganby, York YO4 6DJ Tel 01904 448675 Fax 01904 448713

advancing turf technology

AD REF 38

1966

**TRILO**

1996

VACUUM SWEEPERS

**First in the field.  
Still out in front.**



For speedy, efficient and economical collection of grass cuttings, leaves and litter, Trilo's SG 400 is the perfect solution.

From golf courses to recreation grounds, this versatile machine is ideally suited to all applications.

There are now nine models in the Trilo range, and with numerous options available, you can trust Trilo to make your job easier and more efficient. For hire or sales contact:



**MJT Contracts Ltd**

Wadebridge Farm, Landwade, Exning,  
Newmarket, Suffolk CB8 7NE  
Tel: (01638) 720123.  
Fax: (01638) 720128

AD REF 382

## Experience 'Reel' savings and make your course a 'Cut' above the rest

- Arkley Golf Club
- Ashbourne Golf Club
- Ashbury Golf Club
- Beadlow Manor Golf & Country Club
- Braintree Golf Club
- Bramley Golf Club
- Caldy Golf Club
- Carnoustie Golf Links
- Carvoeiro Golfe SA (Algarve)
- Cavendish Golf Club
- Cawdor Golf Club
- Charleslands Leisure (Co. Wicklow)
- Clitheroe Golf Club
- Collingtree Leisure
- Cottesmore Golf & Country Club
- Crompton & Royton Golf Club
- Delapre Golf Complex
- Eaton Golf Club
- Fortrose & Rosemarkie Golf Club
- Gleneagles Hotel
- Goring & Streetley Golf Club
- Harpenden Golf Club
- Harrow School Golf Club
- Hellidon Lakes Golf & Country Club
- Hirsell Golf Club
- Kinross (Green Hotel)
- Leasowe Golf Club
- Leek Golf Club
- Lingfield Park
- Lymm Golf Club
- Malone Golf Club
- Massereene Golf Club
- Mere Golf & Country Club
- Milltown Golf Club (Dublin)
- Mold Golf Club
- Mount Murray Golf Club (IOM)
- Muirfield (Gullane) Golf Club
- Nairn Golf Club
- Newbury & Crookham Golf Club
- Newcastle-under-Lyme Golf Club
- Omonde Fields Golf Club
- Piltown Golf Club
- Pineridge Golf Club
- Ponteland Golf Club
- Preston Golf Club
- Ramsdale Hall Golf Club
- Rowlands Castle Golf Club
- Royal Ashdown Forest Golf Club
- Royal Dornoch Golf Club
- Royal Liverpool Golf Club
- Royston Golf Club
- Rye Golf Club
- St Andrews Links Trust
- Sherborne Golf Club
- Slaley Hall Golf & Country Club
- South Moor Golf Club
- Taunton & Pickeridge Golf Club
- Tehidy Park Golf Course
- Telford Golf Club
- Temple Golf Club
- The Berkshire Golf Club
- The Vale Golf & Country Club
- The Wynyard Club
- Torquay Golf Club
- Turnberry Hotel
- Tyneside Golf Club
- Wellingborough Golf Club
- West Herts Golf Club
- West Sussex Golf Club
- Whitecraigs Golf Club
- Worpleston Golf Club
- Wanstead Golf Club

**NEW CUSTOMERS:**

- Brookmans Park Golf Club
- Inverurie Golf Club
- Longhirst Hall Golf Club
- Mannings Heath Golf Club
- Newaslie United Golf Club
- North Foreland Golf Club
- Reykjavik Golf Club (Iceland)
- Royal West Norfolk Golf Club
- The Roxburghs Golf Course
- Tsada Golf Club, Paphos (Cyprus)
- Wolstanton Golf Club
- Sunningdale Golf Club

**Jupiter.**  
42" capacity  
Mower  
Cylinder and  
Bottom  
Blade  
Grinding  
Machine.  
A truly  
'precision'  
grinder, built  
to last half a  
century.  
Used and  
preferred by  
Professionals.



**SATISFIED CUSTOMERS:**

"Every forward thinking Golf Club should have a Juno in their workshop, a truly excellent machine." Mr. Mark Jones, Head Greenkeeper, Preston Golf Club.

"Hunter's relief grinding is far superior to anything I have ever seen, each blade cuts true, the savings are substantial and the cost is minimal." Mr. Roger Shaw, Course Manager, Ramsdale Hall Golf & CC, Co Durham.

"Our sole plates/bottom blades are now lasting between 2-3 times longer than when we were spin grinding." Mr. Philip Baldock, Head Greenkeeper, The Royal Portrush Golf Club, County Antrim.

"It is the best piece of machinery this course has ever invested in, a fine machine that I would recommend to anyone." Mr. John Bashford, Head Greenkeeper of the Green Hotel Golf Course, The Kinross Estate.

"A quality machine that gives a superb finish to our cylinders, and saves money." Mr. Derek Green, Head Greenkeeper of Royal Liverpool Golf Club.



**Juno 36".** Will accommodate every make and type of professional cutting cylinder and bedknife. Can 'in-situ' grind many greensmower reels. Water cooled (eliminates dust and heat), simple and fast to use, accurate 'relief angle' grinder.

**YES! All these clubs are breathing a big sigh of 'Relief' - let us tell you why!**

With our unique and accurate 'Relief angle' grinding method which: • Reduces contact between cylinder and bedknife (blades can last up to four times longer) • Reduces drag which means less friction, less fuel, less problems, less maintenance • Makes cutting units easier to 'set' • Blades cut cleaner and stay sharp longer.

But the biggest 'relief' is cutting service costs, reducing downtime and improving standards.

**EH ERIC HUNTER GRINDERS LTD**

HOBSON INDUSTRIAL ESTATE,  
BURNOPFIELD,  
NEWCASTLE UPON TYNE, NE16 6EB.  
TEL: (01207) 270316 FAX: (01207) 270312

See us at  
**Scotsturf**  
Ground Floor  
Stand 21

AD REF 73

# The chase after colour must cease

I have no wish to compound Alistair Connall's problems and indeed I make it a rule not to criticise unless I have seen matters for myself and although I am fully conversant with both background and events my intervention is on the basis that there is so much to learn from his comments, in general rather than particular terms, that my observations may draw attention to the revealed causes of the crisis.

Collingtree, established 1987, is hardly a new course. The long line of problems it has experienced follow, as night follows day, the decision of an inexperienced US "designer" to use "pure sand greens and Penncross". Both have been comprehensively condemned, often and specifically, by most of not all advisers – certainly by STRI and myself for years. "Unfortunately the predominant grass species is now annual meadow grass which seeds almost continually". Precisely! Any plant seeding "almost continually" is clearly under stress – nature's reaction to the threat of imminent death is to reproduce.

Sand only greens demand constant feeding with NPK and lime. This ensures total dominance of *Poa annua* in temperate climates. Failure to do so results in massive attacks of Take All Patch disease. This grass is the source of 90% of the problems in greenkeeping. Slow (seeding) putting surfaces follow – and encourage close mowing to try to collect the seed and speed up putting surfaces. Stressed grass responds for a limited period to this feeding but constant close mowing pushes even *Poa* beyond its limits of endurance.

"Symptoms seemed to indicate leaf spot"! This is never a significant disease – but the symptoms did indicate severe stress not disease. Fungicides would be counter-productive and ineffective. Allowing the cuttings to fly would ensure *Poa* dominance but it died instead – end of story. The stressful regime "caused *Poa* to complete its life cycle". Precisely! I am reminded of one club who told me they were concerned that their greens (*Poa*) were dying. "No, Sir you are killing them" was my reply – but gave them hope and they now have 50/50 *Poa/Agrostis* greens.

Finally we are told the grass is recovering (or regenerated) "proving that A.M.G can survive". It most certainly *can* recover – that is why it is so prevalent and such a persistent problem, especially in that it is

such a very poor winter grass.

What is the moral of this sorry tale? Where does the blame lie? Not with the greenkeeper dealing with a difficult situation of which he has no previous experience. There are virtually no good sand-only greens – and the one or two that are, are a tribute to the skill exercised in management.

Does it lie with advisers? Yes, but not in relation to the course, but to the principle. The expression "we gave them (in this case the European Tour) what they want", says it all.

The blame lies fairly and squarely on the shoulders of the professional Tour touting for "customers through turnstiles" and prostituting sound greenkeeping principles (of both construction and maintenance) to appeal alike to the great God television and ill-educated entry golfers.

All those spectator golfers who enthuse about "beautifully green" courses for summer tournaments will be the first to moan if as a result they are on temporaries for most of

the winter – when the Tour will be enjoying golf in warmer climes. If our traditional game is to survive and all year round golf remain feasible then this chase after colour – the "Augusta syndrome" – must stop.

Before dismissing me as some crotchety old Victor Meldrew of golf, think on! We have seen it all before (well, I have) in the '60s and '70s, when the feed and water brigade destroyed so many of our courses – and here we go again. If basic principles are ignored and sound management stopped eg by hotel managers, "because it might upset the guests" then nemesis will assuredly strike and strike again. Too many venues for televised golf fall far short of expectation for this to be mere coincidence. Failures are not acts of God, unfortunate accidents or due to previously unheard of diseases. They are the direct result of bad construction methods and bad subsequent management.

**Jim Arthur**

## Taking an ecological view

I found the article entitled "The Buzz Never Stops at Wentworth" about Chris Kennedy – October *Greenkeeper International* – very interesting but felt that relating to heathland management the comment "some people say there shouldn't be any trees on a heathland golf course but I disagree" if taken literally could lead to the loss of heathland courses and their reversion to woodland.

Heathlands by definition are "open landscapes largely devoid of tree species, characterised by nutrient, poor acid soils and a domination of low growing shrubs, principally of the heath (*Ericaceae*) family, (*Culluna vulgaris*) being the most prominent species".

Management is the key to maintaining the heathlands, either naturally through grazing or via physical methods employed by man. These processes have continued over 4,000 years since the first forest clearances by our early farming ancestors depleted the nutrient status of these predominantly sand areas. Many species of wildlife have, over this period, become totally dependent upon the heathland conditions, several are of international importance ie

Red data species on the brink of extinction. Golf is contributing to the conservation of heathlands, helping to extend what is now a very fragmented resource.

The final straw leading to a further loss of our heathlands would be to stop management and let succession take its course. From an ecological viewpoint loss of heathland through tree regeneration and the reinstatement of woodland would not be the most appropriate conservation strategy. From a golf point of view, tree invasion will reduce the prestige and status of the heathland course, its strategic/playing quality whilst at the same time reducing the overall aesthetic contribution that the open heathland condition can offer.

Indeed, on so many courses where heather was once a dominant feature large areas of this attractive and penalising hazard have now already been lost.

Thus, whilst some trees are tolerable, and indeed necessary, on our heathland courses their potential for natural spread must be recognised and rigorously controlled.

**R.S Taylor**  
**STRI Ecologist**

## Value for money

I write to you to convey my thanks through your magazine firstly to Rod Clark of Vector Training and Ken Richardson BIGGA for running an excellent two day course in Computer Skills at Falkirk recently.

The training was first class and I and other members of the class gained excellent practical use of computers which I hope will become of great use in the future.

Secondly I would like to thank all contributors to the BIGGA Education and Development Fund for making these courses possible.

I would recommend any of these courses to anyone. Great value for money!

Thanks again.  
**Gordon I. McKie**  
**St. Andrews**

## Times change

How times have changed. I was a Head Greenkeeper at two golf clubs for a number of years in the '70s. The frustration of lack of investment in machinery and the fact that the job was not being done to my satisfaction finally drove me out of the job, which I still think is the best job for any outdoor worker.

Recently, I started back at my local golf club as an assistant and was amazed and envious of the amount of equipment now available to the Greens Staff. With so much equipment on hand and double the staff when I was Head, the opportunity is there to do the job quicker and to do it better.

Unfortunately I was also amazed and dismayed at the frenetic and often obscure efforts to get certain jobs down in record times.

Golf courses are becoming very busy places, more and more people want to play this great game and any ideas of how to get the job done quicker is obviously very welcome. What I can't accept is the surrender of quality to quantity. There should be no compromise on presentation.

**Name Supplied**

## Footnote

Re: Mr Jeffrey's problem "How do I tackle pearlwort?" in August's magazine. I have found on my lawn that by applying "Verdone" in dry conditions, then twisting your foot on the Pearlwort gets results.

**C.C Moore**  
**Budleigh Salterton, Devon**

# REAL WORLD TEST

## Irrigation Equipment

GREENKEEPER INTERNATIONAL

**Hugh Tilly looks at a range of irrigation equipment on the market.**

Past seasons have put "automatic" irrigation to the forefront of most greenkeeper's minds and although there are still some, particularly on links courses, who believe that drying out is a natural phenomena which should be part of the game, most recognise that water is essential to maintaining a playable and attractive surface – not to mention sustaining the grass.

How far you go in irrigating depends upon a number of factors including any requirements for "a pretty course". The norm is for greens, tees and approaches to be watered, however some clubs have watering on specific banks and some surrounds while others have found a need for water on some or all fairways. One of the controlling factors in selecting an automatic irrigation system is the availability and cost of water, and while many clubs are still linked into mains water and thus pay through a meter there are a growing number which have installed a reservoir or borehole – and still pay. A valid point made by one Course Manager was that it was logic, even essential, to consider irrigation as an integral part of overall design – and to consider where the water would be sourced. Obviously the most satisfactory answer for the environment is to save winter rainfall, however, this needs a large reservoir which can be a major capital expense if the terrain is not water retentive. Boreholes are another option however often these cannot always be relied on to provide the volume required when it is most needed – much depends on the sub-strata. Which ever way you acquire water you will have to pay – the important point is that water should be sourced economically and reliably, this latter being as vital as the source itself.

While it was once common to find portable hose and sprinkler systems which connect to hydrants around the course, such systems are labour intensive and have become increasingly rare. Nevertheless most courses still find a need for some manual



The Oxfordshire's Martin Jones at their weather station

watering. Some fairways can be watered using travellers irrigators but these are only semi automatic and need good hydrant around the course. The most favoured system for today is fully automatic with an electronic controller to operate remote valves and pop-up sprinklers. Modern systems, and all in this survey, are of the pressure type which keep pressure in the line using a pressure vessel with a switch to activate a pump when pressure goes below a pre-determined minimum. Modifications can be used to improve response and control.

Perhaps the most important

factor for successful installation and operation is the ability of the designer and installer. There have been some horrendous tales of poor installation, of underground lines which are always failing, and of valves and pop-ups which jamb regularly, however, there are now several specialists who have the experience to "get it right" and to rectify the inevitable glitches fast and with minimum fuss. While most modern systems are very versatile, getting them set up to put water where you want it, when you want it and in the right amount is not always quick nor simple – especially as

most irrigation is carried on overnight. A growing body of opinion says that setting and operation of irrigation is a specialist task and perhaps a full time one – particularly in the early years of use. A mixture of imperial and metric units are used in this feature, usually those in most common use in irrigation. There are about 225 gallons in a cubic metre of water or 1000 litres.

### The Oxfordshire Golf Club

Designed to championship standard by Rees Jones, the 18 hole Oxfordshire at Thame, this year hosted the Benson and Hedges International Open on the European Tour. It has irrigation installed by Turf Irrigation Services on all greens, tees and surrounds plus watering of part fairways as well as "feature roughs" and other important clubhouse turf. The installation was put in when the course was built – it opened in July '93, which enabled TIS to trench all pipework and control cabling. There are some 1400 individual sprinklers, all Toro gear driven pop-ups in five models, full or part circle, and spaced to water head to head – varying nozzle and model sizes ensures that output met the specification. Control is by a Toro Network 8000 with 46 satellite stations which operate the sprinklers and most have individual control. There are three pumps, of differing sizes from 25 to 60 hp to give it the ability to output up to about 1050 gals/min – and these are automatically selected to suit demand. What is radically different to many other systems is that the Oxfordshire has a weather station which provides input into the system. Course Manager, Martin Jones, says that it is most revealing how conditions can vary day by day. He, or the computer, uses an index of 'evaporation/transpiration' – (E/T) to assess water need and this can vary dramatically when objectively measured. He is totally convinced about the efficiency and effectiveness of this method and has altered his thinking to E/T rather than minutes of application.

Fixed parameters such as soil type, aspect, exposure to sun and

IS YOUR BUSINESS GOLF?



OURS IS



**Watermation**  
IRRIGATION SYSTEMS

Tongham Road, Aldershot,  
Hants, GU12 4AA, England  
Tel: 01252 336838

Since 1970  
Watermation irrigation  
systems have helped to  
create and maintain  
championship golf  
courses around the  
world

**Hunter** Gear Drives That Go The Distance



**Sports Ground Irrigation Co**

DISTRIBUTORS OF QUALITY IRRIGATION PRODUCTS

6 Stuart Road, Market Harborough, Leicestershire LE16 9PQ

**Tel: 01858 463153 Fax: 01858 410085**

AD  
REF  
33

AD  
REF  
491



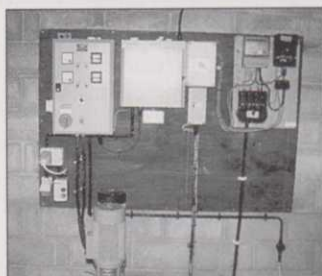


wind and slope as well as location and use are all fed into the computer – and these can be reprogrammed if they are altered. This programming was initially mainly done by the supplier, and it controls output from each head. Martin says that he does not think in terms of length of watering allowed as the program is based on E/T and automatically allows for these variables. The critical measurement used is millimetres/week which is processed to a specific formula to interact with the settings and demands of the Toro controller. The Network 8000 can be programmed to operate on daily, alternate, three day or weekly cycles and Martin programmes it to apply water as a percentage of the 'E/T' rate. He programmes sprinklers into four types according to location, i.e. greens, surrounds, tees, and other and normally applies from 35% to 48% of the E/T figure provided by the weather station. He commented that as a rough guide 40% is maintenance level while over 45% gives lush grass, when taken over a period. The controller has the ability to apply from 1% to 900% of set rate. Double normal rate – i.e. 80+% is used for watering in feeds etc.

Asked about the overall performance of the system Martin said he was very pleased with it, there is little maintenance required, it can be drained down with the existing drain points without needing compressed air to clear the lines and frost has not caused any damage to lines or sprinklers – the pump house and control electronics have automatic frost heating. And there have been very few stuck sprinklers.

The Oxfordshire takes all its irrigation water from two lakes which collect rainfall from the course – the entire course is drained, either with ditches or underdrains. These lakes have pvc linings – at the instance of the NRA – with clay on top and hold 200,000m3. Use in 1996 equalled about half of this. Location for the weather station is all important and the supplier provides some critical requirements which have to be met for it to give accurate and representative readings. On the Oxfordshire it is placed well away from trees or other disturb-

ing features, about 100m from the course manager's office which houses the controller. The lakes and pumps are some distance from the controller. Control cables carry 240 volts to the satellite stations which decode and relay 110 volts to individual valves. All pipework is uPVC with solvent welded joints and has been leek free – the few problems have been caused by subsequent ground settlement or heavy traffic over uncompacted ground.



Pump controls at Cumberwell Park

#### **Cumberwell Park at Bradford on Avon**

This new private parkland 18 hole course has an Ocmis designed irrigation system which Course Manager, Marc Haring, says performs extremely well with minimum problems. First opened in 1994 the irrigation was installed while the course was being built. Installing contractor was M J Abbott Ltd whom Marc praised highly. Reasons for deciding on an Ocmis installation was the use of MDPE – blue plastic – piping with screwed connections, price, a three year warranty overall and installation by Abbotts – who was a contractor already known from previous work carried out for the James family who own the land.

Water for the system is stored in a winterbourne brook-fed 12 million gallon lake situated on clay. Under half of this was used during each of the last two summers, furthermore such volume was replaced last autumn in a single week of rain. Irrigation is laid on to all greens, tees and approaches, it is supplied to four zones by two Grundfos CR8 pumps each with an 8.8m3/hr output (at 10.3 bar). All sprinklers are of the pop-up type, full or part circle, either Buckner impact heads on greens and

# *Irrigation system shut down for the winter?*

## *Memories of last season's irrigation problems fading?*

### *Perhaps you should be thinking of any major repairs or upgrades now.*

#### *For further information please call.*

## *Irrigation By Ocmis*

# **01460 241939** **0131 220 2102**

## THE WINNING CHOICE IN SPORTS FIELD IRRIGATION

# RAIN BIRD®

PREFERRED BY PROFESSIONALS WORLDWIDE

There is no specific system that meets the demand for every sports field. That's why Rain Bird offer a choice of systems to meet the individual requirements of your sport, local conditions, budget, water and manpower.

# GhI

As professional distributors and installers of irrigation equipment for over 24 years we will put our experience behind you

*So make our reputation your choice.*

### GLEN HEAT & IRRIGATION LTD,

PINCHBECK, SPALDING,  
LINCS. PE11 3UE

Telephone:

(01775) 722327

Facsimile:

(01775) 725444

**GOLF COURSE IRRIGATION**

- Designed
- Installed
- Serviced

## Irrigation at its best

AD REF 280



approaches or Hunter gear driven on tees. In-head controls are used on greens and approaches, some of these having twin nozzles, while each tee has a single control. The actual sector can be set on all heads. Marc stated that greens at Cumberwell are relatively large and have, on average, four heads each, while approaches have two, and tees five or six. Hydrants for hose and a lake feed have been included in the specification and the controller has several spare outlets to make it easy to add to the system if necessary – Marc said that one green is to be extended this winter and so will utilise this expansion ability. The wall mounted CIC computer control operates the system in four zones. It can be linked into a P.C. at a later date and incorporates a small printer which Marc finds useful to give a hard copy of settings.

Programming the controller has proved to be quick and easy, Marc reckons that on average he now takes under five minutes per day. Experience has taught him how to tweak the system to maximum effect and while he did not criticise the manual provided, he did say that it took a little time to learn the jargon used. The volume delivered by each head can vary according to height and distance from the pump but this is easily compensated in programming by adjusting individual run times. Similarly other physical differences on each green, such as shade and exposure to wind can be corrected by actual run time. Some manual watering, with a hand held hose, is still carried out, perhaps ten hours a week, to correct areas of specific deficiency. Some of this need results from wind effect on sprinkler pattern, some from the inevitable difficulty of using circular pattern sprinklers – even if overlapped.

The system is decommissioned in autumn and recommissioned each spring initially by Ocmis, however the club will be drying out the system themselves this winter. Ocmis's engineers will still be used in the spring.

Very few problems have been experienced overall, there have been no leaks in the line and a minimum of head problems – the greatest number of problems

being wear on the impact drives, and sticking pop-ups close to bunkers when sand has got in. There have also been a few blown fuses. Frost damage has been limited to the outer castings on a few heads, but Marc thinks this was due to ground water seeping in. The course is on clay which forms the impermeable strata for the lake. Where heads have stuck they have been easy to spot, either due to the dew still being on the grass or by turf colour and growth.

Overall Marc said the system has been trouble free, and while past experience has led him to expect some problems he said the Ocmis system at Cumberwell has almost always gone through its cycle without trouble. Installation had been "very good" and Ocmis were "very helpful" were his summary words.

### Canford Magna in Dorset

This course began as a 9 hole and has been extended to 36 in the past few years. It is variously laid over gravel or on silt over gravel in the Stour river flood plain and all greens are to USGA spec, thus drainage is exceptionally good. Course Manager, Trevor Smith, said he feels that it is essential to keep the root zone moist. The system was installed by Salisbury-based ISS and it now comprises of a computer (IBM) control running about 400 sprinklers through six zones. Water comes from a spring fed lake via three



Canford Magna's Trevor Smith

## NORTH STAFFS IRRIGATION

IVY MILL, LONGTON ROAD,  
STONE, STAFFORDSHIRE

Value for money at the sign of the water mill.

We are big enough to cope with all your Irrigation requirements and small enough to care about every aspect of our dealings with you. A family run business of qualified Engineers who really enjoy their work. Our Principal plays golf when he's not working and fully appreciates the needs of the course managers. We can offer your Golf Club the technology of today at prices well below some of the the bigger companies.



**At the end of the day the system has to work  
OURS DO – BEAUTIFULLY**

Recent contracts:

Royal Lytham & St Annes (1996 Open), Chatsworth (For the Duke of Devonshire), Wilmslow, Northampton Town F.C., Donnington Wood Bowling Green.

We are also pleased to undertake work at Tennis Clubs, Bowling Greens and Football Grounds.

Telephone us now on 01785 812706

Fax 01785 811747

Member of the BTLIA

AD REF 217



**Irrigation in action:**  
Watermation system at  
Hankley Common

main Godwin pumps with a small pilot pump which is used to maintain pressure. The controller has recently been changed from the original ISS BBC "Aquaflow" to a new IBM 486 computer and "Aquaflow +" software. Change-over has not been entirely straightforward due to some misunderstandings and polarity mix ups which 'blew' several chips – ISS are sorting this out. The new controller will give the system almost infinite flexibility and being 'Windows 3.1' based will enable the operator to use a mouse to set all parameters more quickly and easily. Important features of the Aquaflow+ program include "global adjust" which allows the operator to alter the times on all heads by percentages from -50 to +100%. Producing new programs – or files or adjusting old ones is quick and easy by copying, modifying then re-naming – several files can be 'chained' together to operate consecutively. ISS says the new controller system was released in March 1996 and some 32 new systems or upgrades have been sold to date.

Pipework and the low voltage control cables were all trenched in, the pipes all being 6 m lengths of uPVC with solvent cement joints. All were protected by hand by the greenkeepers with a layer of sand over the top and Trevor said that the care with which this laying was carried out has ensured that there have been absolutely no problems – no bursts or leaks over three years.

Greens and approaches are watered by Toro 650s and 760s, adjustable part or full circle, gear driven pop-up sprinklers while all tees are irrigated by Hunter I31 ADS pop-ups, the latter having

proved to be easy to service and clean out. Trevor said that it was his belief that all greens and approach irrigators must be of the in-head control so that they can be individually set to allow for shade or wind variations etc. He said that it was also important that each green had a hydrant for hand watering.

Canford Magna is going to change its water source in the next winter from the spring fed lake currently used to a borehole fed lagoon. The main reason Trevor gave for needing this change was the high pH found in the spring water. The club has always worked in close consultation with the Environment Agency – previously NRA – and a significant factor in this has been that the River Stour bounds the lower course for a considerable part of its perimeter. There are also some 14 feature lakes on the land.

The club will also extend the system to include some fairway watering as it has found it necessary to use a bowser to apply water to the fairways in the two past summers. This will mean changing the present system from six zones to eight, however, the ISS system has sufficient flexibility built in that changing is not considered to pose any problems.

Use, last year, amounted to 8, million gallons, with a full summer irrigation cycle taking about 75 thousand gallons per night. Trevor said his aim is to apply the water as early as possible in the evening so that it has the maximum length of time to soak into the rootzone. He said the club is open throughout the year and has an expectation of putting some 60,000 rounds through each year

– thus keeping surfaces playable was a must.

Consideration was also given last year to installing a weather station, however this was deferred in preference to upgrading the controller. Trevor feels that a weather station is but another aid to the management of the course, but he still has to be convinced of its need. ISS believe that once installed he will give it increasing credence.

#### **Hankley Common in Surrey**

This 18 hole sandy heathland course on lower greensand had its first irrigation in the 1960s – installed by locally-based Watermation. Upgrading in 1971 put automatic irrigation on all greens while an 1991 upgrade resulted in tees and surrounds being included in the system. In 1995/6 the whole system was virtually reinstalled or refurbished with water on all fairways as well, a borehole feed and new controls and pumps. Prior to last year the club took all its water from the mains and last year only had a licence to extract 3 million gallons, which, said Course Manager, Ian McMillan, was insufficient. An abstraction application for 9 million gallons including summer use has now been sought and should mean independence from mains water supply. The specification with which the club went to tender included an ability to apply 21mm per week from 7 hr/day working. Some 16 hectares in total are now covered by irrigation from pop-up sprinklers.

Watermation won the contract for the last improvements and Ian admitted that the company's satisfactory past record and local

base, as well as the quote price, were important considerations. No details of the other bidders were given but it was intimated that there were about three and all were nationally known names.

The installation has mainly GR series pop-up impact heads, variously full or part circle, some 530 of them, which are mostly controlled in stations of 3 or 4 by two TW2/4 controllers operating two pumping stations with a total of five pumps. The overall system is divided into two (old and new) with three zones for fairways and two for greens and tees. Ian said Hankley Common opted, as an extra, for a radio remote control, this is interlinked to both controllers and enables him to operate any station from almost anywhere on the course. This facility, he has found to be invaluable as it allows him to check the functioning of any sprinkler or group of sprinklers as well as allowing him to water in feeds or fungicides etc. without his needing to stop or leave his vehicle – this not having to stand around was a major time saver. In particular it means that he can switch on or off as he drives around or as greens are fertilised.

All heads have the same nozzles, with variations in water delivery being made either by spacing or by run time. Full circle sprinklers are placed in parallel lines on either side of fairways to give full application to the fairway and this meant that they apply only 50% to semi-rough. The use of travelling irrigators for the fairways was considered but rejected as being too labour intensive.

Installation was undertaken by Watermation supervised by McMillan Shields in a strictly controlled schedule which allowed each hole to be closed for only two days. Pipework was all uPVC – in 6m lengths, solvent welded and then mole ploughed in – larger sections also having a mechanical ring to ensure water integrity. It was, Ian said, a very smooth operation. There have been no problems with installation and the only small problem, with the header tank, was painlessly sorted out by Watermation. The impact heads, the GR3 in particular, have been very



## The place, the time, the event...

It's almost here – BTME 97, January 22-24. The biggest, the most comprehensive, the most exciting event for 1997! Have you pre-registered yet? See the back of this issue for your pre-registration card.

### Fancy a night out?

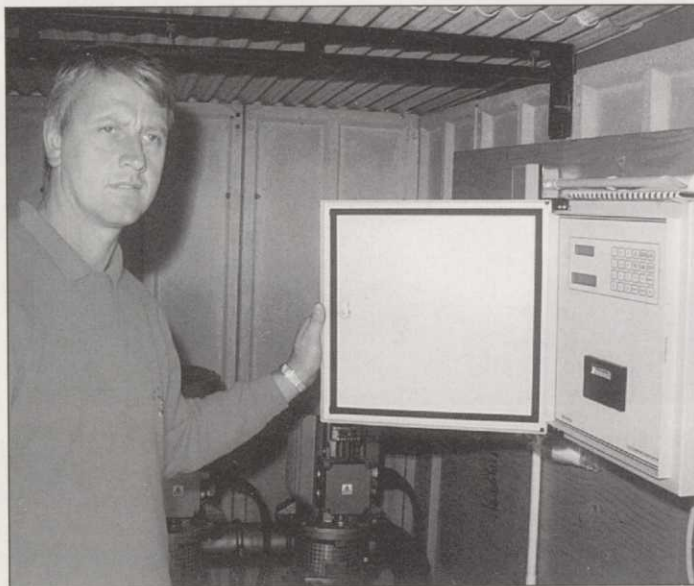
Have you booked your banquet ticket? It's the hottest ticket around for those in the know! Contact Sami Collins at BIGGA HQ on 01347 838581 if you haven't already reserved your ticket to see top comic Bobby Davro and experience the delights of Laine Kennedy's cabaret – all together, a night not to be missed!

### Four halls to visit

All 154 companies large and small are primed and ready to talk to you about all that is new in your industry. So what are you waiting for? It couldn't be easier – send your completed registration card back to BIGGA HQ and avoid the queues.

### Especially for you...

Are you a Chairman of Green or Golf Course Secretary? If so, register for the course presented by the STRI. The course aims to introduce Chairmen of Green and Secretaries to the practicalities of golf course construction and management. It also includes a visit to the STRI trial grounds and laboratories. Call Sami Collins at BIGGA HQ to book your place.



Andrew Hall of St George's Hill

successful and easy to get out for maintenance, as has all maintenance and draining down.

The TW2/4 controllers have been found to be particularly user friendly and have a good level of diagnostic ability built-in. Programming is very easy and Ian insisted that all important documentation, i.e. user manual and maps, were encapsulated in plastic making them durable even if used with wet or dirty hands. As far as Ian was concerned user manuals are extremely easy to understand. He relies on traditional greenkeeping principles to judge when and how much water to apply and this includes a regular use of probes.

### St George's Hill in Weybridge, Surrey

Superseding the original 1970s installation the club's latest system by British Overhead Irrigation Limited has three variable speed pumps, a Photron CIC4 controller, three zones covering the 27 holes and allows for the use of (three) self-travelling sprinklers – with a 200m cable. The heathland courses are extremely free draining however Head Greenkeeper, Andy Hall, uses wetting agent and Toro Hydroject aeration to ensure optimum use of water. This is particularly pertinent as all water is bought from the local water company and stored in a 21,000 gallon butyl lined above ground tank. A key-

stone policy is to keep the system simple, and Andy said this applies to programming the system. Nevertheless the CIC4 which superseded a CIC1 model is extremely flexible. Mr Gerry Wilkins of BOIL suggested perhaps more flexible than any greenkeeper is likely to need. CIC controllers are produced by a 'sister' company. The previous irrigation system only had a single zone and single phase pumps of limited output which meant that it was taking over 14 hours of watering "just to keep the course alive". While the original system was only designed to irrigate 18 greens the addition of 9 holes plus watering of tees (and some banks) called for a radical re-think. The new system has just completed its first season. The system is a constant pressure system, however a time clock maintains a lower pressure during the day and this is increased at night for irrigation. The design pressure is 9.23 kg/cm<sup>2</sup> – at the lowest point – at St George's Hill there is a variation of about 30m between top and bottom points in the system.

Typically each green has four heads, controlled in pairs, while approaches have three or four, and the tees have from four to six each. All are pop-up gear driven Hunter G600 or G650 heads, full or adjustable part circle. Fairways are covered by three BOIL travelling sprinklers each with an output of 1600 gallons per hour,

these take water from hydrants through 1in. flexible pipes. However, consideration is being given to about putting in a permanent pop-up system for some or all of the fairways. Virtually no hand watering is carried out.

The sophisticated pump control system allows any of the three Grundfos pumps to be set as the duty pump which maintains line pressure – and this can be operated at very low revolutions little more than tick-over so minimising electricity consumption. It is only when demand exceeds this pump's capacity that the other pumps are called in. The variable speed motor controller means that each motor soft starts, avoiding starting under full load and considerably reducing the sudden pressure stresses placed on the whole system but in particular on pipework.

A notable feature of the CIC4 controller is the "duration percentage" function which allows an overall percentage increase or decrease to be made to all watering times, without the need to alter individual settings. Pipework is uPVC solvent welded in sizes suitable to location, some 8 miles of it, and most was mole ploughed in. Ample flush out and drainage points were installed and any section is easy to isolate says Andy.

There were a few small teething problems, but no more than Andy was expecting and these were readily rectified by the supplier. Once the system was set up, fine tuning and operating proved to be quick and simple. Andy said that knowledge with the previous system made using the new one simple.

### THE ONE QUESTION I WOULD LIKE TO ASK OTHER GREENKEEPERS IS:



"How much do you earn?"  
Terry Crawford, Clondeboye

# Hardi makes every drop count



Selecting the best spray chemicals for your turf is one thing, applying them with the required accuracy is another.

That's why at Hardi we don't measure the performances of our spraying equipment solely in terms of tank capacity, nozzle output and bar pressure. We measure it in your terms.

Uniform coverage, speed of application and effective results.



**AM-PS Eagle**  
*High specification sprayer. Tank sizes 300/600/800 litres. Fitting kits available for all turf utility vehicles.*

For example, we know that your individual requirements, in terms of chemical choice, climate, terrain and turf condition, are unique.

**AM-TR-2 600/800 Trailer Sprayer**  
*High capacity spraying with large volume tanks and wide booms. Complete with PTO drive.*



That's why Hardi offer a complete range of amenity sprayers to suit all situations with tank sizes from 100 - 1500 litres.

When it's the end result that counts you can always rely on us... no matter what the pressures.



AD  
REF  
25

*We've got it covered*

For more details or the name of your nearest Hardi distributor call

**01455 233811**



# FRESH FROM SALTEX

Due to a lack of space in last month's magazine some of the interesting new products at Saltext had to be held over to this month.

## JCB

JCB launched a new materials handling machine. It has the manoeuvrability and centrally mounted visibility of an articulated loader, the reach and lift capability of a telescopic handler, the lift capacity and stability of a rigid loader and compact dimensions similar to a large skid steer.

The new JCB ~20-50 Loadall telescopic handler is based on the tried and tested drive train of the popular JCB 2CX compact backhoe loader and uses the proven single arm technology of the world renowned Kobot skid steer loader.

At only six feet wide, less than seven feet high and with four wheel steer it is sufficiently compact and manoeuvrable to work in almost any confined space; warehouses, industrial applications and inner city sites, including multi story car parks. Yet the 520-50 is powerful enough to lift two tonnes to a height of five metres.

The 520-50 is powered by the 71 hp (53kW) naturally aspirated Perkins 1000 series engine which has easy access to all daily checks from one side of the machine. And at only 4.5 tonnes it has a high power to weight ratio.

The new JCB 520-50 is well equipped in line with other machines in the JCB Loadall range. Features such as; JCB Safe Load Indicator, power braking on all four wheels and a low mainte-



The BIGGA stand at the show received a Silver Award for its excellence at the Show. The stand which featured an indoor section, a veranda as well as a grassed area proved an ideal meeting place for members and people from the industry.

The picture shows Neil Thomas receiving the award from IOG National Chairman Derek Walder.

nance parking brake are fitted as standard.

Product information Line: 0800 581761.

## Lawn-Boy

Lawn-Boy introduced a cleaner, quieter, lightweight 24 volt cordless mower. The mower eliminates tune-ups, oil changers, fuel spills and engine emissions. The lightweight polyethylene deck with steel liner and moulded bumper is gentle on trees and shrubs while it offers versatility as mulching and side discharge are standard and bagging optional. It mows up to an hour or cuts up to

half an acre on a single charge.

Further information: Tel: 01366 382041.

## Turf Machinery

Turf Machinery's new Bulk Top-Dresser with its spreading width of 10 metres can spread over 400 tonnes per day. It can also top dress from just a fine dusting to a layer over 18 millimetres thick.

A hydraulically driven slatted bed takes the material to the rear where it passes through an adjusting gate and drops onto two spinners which are also driven hydraulically.

The top dresser requires a minimum of a 50 HP tractor with spool drives.

Further information: Tel: 01483 764467.

## Tildenet

Tildenet unveiled a new bunker membrane designed for lining bunkers to prevent stones and underlying soil for contaminating bunker sand. The membrane also provides good water dispersion rate so it assists with drainage.

Further information: Tel: 01179 669684.

## Iseki

High standards of operator comfort, exceptional lift capacity and well-proven, fuel efficient engines are key features of two new

multi-purpose compact tractors from Iseki which made their debut at this year's Saltext.

Ideal workhorse machines for golf courses, local authorities and market gardens, the new 20 DIN hp TF321 and 25 DIN hp TF 325 (which replace Iseki's TU range) come equipped with spacious operator platform, mechanical or hydrostatic transmission, four-wheel-drive, rear and mid-PTO plus turf or agricultural tyres and optional Mauser cab.

The Iseki TF 321 with mechanical transmission sells from £10,744 and with hydrostatic transmission from £11,780 while the Iseki TF 325 with mechanical transmission is from £11,552 with hydrostatic transmission from £12,856.

Further information: Tel: 01203 851320.

## Dennis

Dennis launched its new "Power Barrow" which can be used as either a pedestrian or a ride-on.

It features a tipping galvanised barrow capacity of 250 kilograms and is operated by a easy start Briggs engine, a simple forward and reverse twist grip and a tiller steer with foldover handle.

There are options of alternative units in place of the barrow and a trailer attachment. Cost is £1600 + VAT.

Further information: Tel: 01332 824777.

## Headland Amenity

Headland Amenity launched a new range of resin coated, precision controlled fertilisers at SALTEX '96.

Multi-Gro fertilisers could help groundsmen and greenkeepers reduce the number of fertiliser applications to just one per season - a significant time and labour saving, claims the company.

"Multi-Gro fertilisers incorporate the very latest formulation technology," according to Mark De Ath, National Amenity Manager for Headland Amenity. The majority of granules are resin coated which enables them to release nutrients at a steady rate over a period of 5-6 months under UK conditions. A proportion are uncoated which means they are immediately available for rapid green-up.

"The products are unaffected



The cordless mower from Lawn-Boy

by moisture, pH or soil type and the release mechanism relates to soil temperature – which exactly mirrors the growing season,” says Mark.

“Independent trials show Multi-Gro fertilisers are effective for up to 200% longer than the current market-leading poly-SCU-based fertilisers,” claims Mark.

Further information: Tel: 01761 410877.

#### Etesia

When areas are infrequently cut, the resulting heavy undergrowth can become very time consuming and expensive to clear. This task is often made more difficult because of sloping terrain and then the job can only be carried out using hand-held brushcutters. The new Attila 85 ride-on brushcutter from Etesia UK is designed and purpose built to make light work of this type of application, and efficiently clears scrub, brushwood and long growth. Built around a reinforced tubular chassis, this 85cm-wide brushcutter is made for the roughest conditions. With its low centre of gravity, differential lock and heavy chevron tyres, it will take slopes up to 30 degrees in its stride.

The well proven 14hp Briggs & Stratton Vanguard engine ensures there is plenty of power for the toughest of jobs, plus noise level is kept to a minimum. The variable speed drive provides a range of forward speeds up to 8km/hour and 3km/hour in reverse. Underneath the heavy-duty steel cutting deck there is a 7mm thick cutterbar which is fitted with swing blades. These can be fixed in a ridged position when working in very tough conditions.

In addition, a built-in safety system protects the cutting mechanism from heavy impacts. Four cutting heights up to 90mm are adjusted by a central lever. Attila's low profile enables the operator to drive it under low hanging branches and its variator drive, plus specially designed steering assembly, make the machine very manoeuvrable for working in confined areas. The machine is ideal for river and water authorities, forestry commission, and contractors who have to maintain motorway banking, verges or clear sites.

#### Mercedes-Benz

A new, higher performance U100L Unimog from Mercedes-Benz made its show debut in the UK at SALTEX.

Power output has been increased by 24% and torque by 45%.

Geared for a maximum road speed of 95km/h (59mph), the new generation U100L is the ideal on-road/offroad vehicle for trailer work, and equipment and load-carrying operations

Improved low-speed torque characterises the new generation Unimog's cleaner-burning Mercedes diesel engines.

In Euro 2a form, the Unimog U100L can be leased for the equivalent of £120 per week, with purchase prices starting at £30,900. Seven year leases or contract hire – reflecting the longevity, low maintenance and minimal repair costs of the Unimog – are available through new financial packages. These allow the Unimog to be operated from revenue as opposed to direct purchase from capital equipment budgets.



The U100L from Mercedes

GCSAA Conference and Show, Las Vegas,  
February 6-12, 1997



## Join BIGGA in Las Vegas!

It is now becoming tradition for BIGGA to host a trip to the Golf Course Superintendents Association of America's Conference and Show and this year is no exception with the 68th Show being held at the Las Vegas Convention Centre February 6-12.

The BIGGA party will meet at London Heathrow Airport on Wednesday, February 5 for departure to Las Vegas, via Los Angeles, at 12 noon. BIGGA will be able to arrange accommodation for any members wishing to stay overnight before the flight at competitive rates.

The Las Vegas Hilton has been selected as the hotel to accommodate our party. It is one of Las Vegas' leading hotels offering outstanding facilities for visitors. It is adjacent to the Convention Centre and only one block from the famous Las Vegas Strip.

The GCSAA Conference and Show runs from February 6-12 with the trade show taking place between February 10-12. You will be able to attend the conference seminars and education programmes as well as take in the latest golf course equipment, products and services at the trade show.

#### ITINERARY

##### Wednesday, February 5

All members will assemble at London Heathrow Airport and will take the 12 noon Virgin Airlines flight to Los Angeles. The group will then catch the 1745 flight into Las Vegas arriving at 1840 local time. The group will then transfer to the Las Vegas Hilton for a eight night stay on a room only basis.

#### Thursday, February 13

Transfer to Las Vegas airport for the 1210 flight into Los Angeles followed by 1730 flight to London Heathrow arriving at 1145 on February 14.

#### PRICES

£720.00 per person based on a twin share

£960.00 per person based on single occupancy

Plus comprehensive travel insurance for the duration of £30.00. Included are: Return Economy class flights London Heathrow/Las Vegas, UK and US taxes, transfers to and from the airport to the Las Vegas Hilton, eight nights accommodation on a room only basis and US accommodation taxes.

Please note: Registration costs for the Pre-Conference Seminars which run from February 6-9 and the Educational Programmes which run from February 9-12 are not included in the package and bookings will need to be made directly with the Golf Course Superintendents Association of America. Details are available from BIGGA upon request.

**Please forward full payment of £750 or £990 (unless travel insurance is not required) to BIGGA, Aldwark Manor, Aldwark, Alne, York, YO6 2NF to arrive no later than Friday, November 29 at the latest, together with name, address and contact telephone number. If accommodation is required for the night of February 4 please let us know in order for the hotel rooms to be booked. Payment will be made on checking-out of the hotel.**

# Around the Green

Keeping in touch with news and comment from the regions

## SCOTTISH REGION

Elliott Small  
Tel: 01259 731445

### Ayrshire

The Section Autumn Outing was held at West Kilbride GC on September 24. The Committee would like to thank the Captain and the Committee of West Kilbride for the courtesy of the course. The weather held out quite well and everyone had a most enjoyable day. The prize winners were as follows:

Cat 1. 1. Wallace Mercer, 81-10-71; 2. Lee Blackburn, 78-5-73; 3. William McMeikan, 80-5-75. Cat 2. 1. Dougie Drain, 81-13-68; 2. Gordon Heron, 85-14-71; 3. Jimmy Johnstone 89-14-75. Cat 3. 1. David Nelson, 97-21-76; 2. Gary Crosbie, 102-21-81; 3. Jim Paton, 101-18-83. Scratch. George Brown 78 (Best last three). Trade. Kevin Brunton 75 (scr). Guest. Dan O'Connor 84-8-76. Texas Scramble. 1. Ian McNab, Roland Blackburn, William McMeikan and Gordon Heron, 59-4-55; 2. Jimmy Johnstone, Gary Crosbie, John MacLachlan and Dan O'Connor, 64-5-3-58.7.

At our recent committee meeting a discussion took place about one of our most esteemed members, Harry Diamond. Our Section Committee has requested from the Scottish executive its approval to put Harry forward for life membership.

Our Section lottery was a success and the winner was A. Groves, of Newton Stewart. Derek Wilson, Robert Bruce and I went down to The Open to do the draw and get the draw sheet completed. The draw was carried out with the assistance of Neil Thomas and John Pemberton and we would like to thank them for their time and I would personally like to thank Neil who pulled my name out with Nick Faldo and, hence, I won a prize. Thanks Neil. We also this year gave day prizes for the best score on each day if people had not been a prize winner in the main competition.

Our Section Social committee is arranging a car rally and a quiz later in the autumn.

We have decided to have a new method of collecting information for the magazine. We are going to use Robert Bruce on his travels to pick up any information which he can find. We will also use the direct method to me if anyone wishes. At the end of each month Robert will meet me and we will collate this information and I will then send it off to Aldwark after checking with our Chairman.

We have over 100 members now and one I would like to mention is Raymond



Burke, who has been residing in Arran for the past few years. It was nice to hear from you Raymond and we hope to see you attending a function soon to have a good chat.

On behalf of the Committee I would like, belatedly, to congratulate our Chairman Ian and his wife Pamela on the birth of their daughter Eildh. I have heard her little tonsils being exercised in the background and it is pleasing to report that she is behaving very well now and sleeping quieter than her father.

Jim Paton

### East

Welcome to this month's report. Sorry there was not one last month but there wasn't a lot to write but everything will be here this month.

Firstly on a sad note is the death of one of our younger members Mark Johnstone who was an assistant greenkeeper at Muirfield. Mark was 20 years old and has been at Muirfield since 1992 he also attended Oatridge College. He died in a road traffic accident near his home on the August 24 and all our thoughts go to his family and friends at this time after such a tragic loss.

On a much happier note. Congratulations go out to two people on the move (These I know about if anymore please let me know) Firstly, George Purves who moves from Melville Golf Course and Driving Range to Kings Acre GC as Head Greenkeeper (Kings Acre which was featured in Greenkeeper International a couple of months ago) George who will be putting the final touches to the growing in process as they hope to open in June '97. So a fair bit of work to be done between now and then (shaping fairways, grading semi rough etc etc). Hope all this work affects his golf as I would like a chance of winning something in the 2nd class wishful thinking on my part I suppose. Secondly Steven Holiday, who is moving after a good number of years (14 I think he told me) from Royal Musselburgh GC where he was first assistant greenkeeper to Melville Golf Course and Driving Range as Head Greenkeeper. All the best to both of them from all the section. So don't forget lads a round of golf on your courses will cover you getting a mention in this column!

Some upcoming dates for your diary. The AGM is at Swanston Golf Club on November 21, sponsor TBA. Also the Christmas shopping trip to the Metro Gateshead. Any information on these and other activities you can call S. Dixon 0131 660 3965

Chris Yeaman 01875 870485 or Andy Forrest 01875 813670 for prices details etc.

Now on to the results service.

Firstly we had the Willie Woods, at Seahouses GC, what a great day was had by all but we could do with a lot more teams as there were only 14 teams which was very poor. So come on make the effort and play in the great tournament. Thanks to the Captain and Council for courtesy of the course, John Stevens for organising everything for us, the steward and his wife for keeping the bar well stocked, the catering staff for the meals and last, but not least, big Alister Holmes and his staff. Well done the course was in great condition considering the dry spell that we were going through great stuff.

Results: (Greenkeeper first) 1. S. Dixon - D. Hastings, Kingsknowe; 2. G. Thomson - F. Rogerson, Goswick; 3. M. Kohler - I. Henderson, Swanston.

Also a big thanks to our sponsor of the day, Ian Henderson, of Ian Henderson Finance. I had the pleasure of playing with him and Martin we look forward to seeing Ian again at next year's event and future East Section events. Thanks again Ian.

Next year's event will be held by the courtesy of Kingsknowe GC, date TBA

PS. How S. Dixon won I don't know as the rumour has it he had his partner playing shots from places that the green staff haven't been. David Hastings Stevie's Partner has had back problems since carrying him round that day!

Now then down to the Autumn Tournament at Murrayfield GC. who were celebrating their centenary this year. Thanks to the Captain and Directors of Murrayfield G.C. for the courtesy of the course, clubhouse staff for keeping everybody well fed and refreshed and also Jimmy Neilson and all his team for having the course in terrific condition. The course was a credit to each and every one of you. Thanks again to everyone who made this day possible.

Results: Scratch - A. Holmes - 74; Cat 1. I. Bell, 77-5-72; 2. T. Murray, 76-2-74; 3. G. Wood, 80-5-75. Cat 2. 1. R. Thomson, 77-15-62; 2. K. Anderson, 85-12-73 B.I.H; 3. S. Russell, 85-12-73. Veteran, J. Robertson, 87-20-67. Guest. B. Kenny Trade. I. Henderson, 79-12-67, Ian Henderson Finance. New Member, K. Kinnaird 90-7-83; Best Nett of the Day, R. Thomson, 62; Best Aggregate. I. Bell, 144, Spring/Autumn. Longest Drive? S. Dixon (AKA John Daly)

It was good to see Scott MacCallum the Editor of Greenkeeper International in attendance. I hope he had a good day and hopefully we will get him to some more events in the future. Our Chairman/Secretary presented Murrayfield

G.C. with a plaque to commemorate our playing there in their centenary year which was a nice touch.

Well I am sitting writing this at the side of the pool here in San Antonio in Ibiza where the temperature is 90+ degrees which is quite warm. So that's it for this month, I will be writing again next month if I stop drinking long enough (it's the heat you see - don't want to become dehydrated)! So anything you want to know or tell us let myself C. Yeaman, S. Dixon, A. Forrest or any Committee Member know and we will try to help you out.

Just one last thing. Your last chance for dance tickets for the annual dance on the 7th December at the Kilsplindie House Hotel, price £18 and not many rooms left if you want accommodation at £20 per person (B & B), so be quick as I think there are only about 12 tickets left. For any information call Steve Dixon on 0131 6600 3965 (so hurry).

P.S. To the Editor. I mentioned Christmas four times in this article this month. Don't tell me it means another yellow card or worse a red! That's it bye for now.

P.P.S. Committee day out won by yours truly Chris Yeaman - 78-12-66 Chairman v. Vice Chairman Match - won by Vice Chairman Team which I was a member of. Hard luck Steve. Thanks to sponsors Lothian Tractors, Haddington Golf Club Captain and Council for the courtesy of the course clubhouse, staff for keeping us well fed and very very well watered and also thanks to anybody I have missed this month.

Chris Yeaman (on location).

### West of Scotland

Well, well, who would have predicted the finalists in the five a side tournament, obviously the ringers were brought in. Could be we have to revise the rules again. Congratulations to the eventual winners Campsie/Russells (on penalties I might add) and hard lines the losers Rigby Taylor. Well fought both semi finalists Clyde Bank/Windyhill and East Kilbride/Pollock. Most teams appeared to have enjoyed the day, as the weather was good and good company. The referees made all the difference, keeping play flowing and punishing any hefty challenges.

The Loch Lomond event had a good attendance and from the Greenkeepers I've spoken to they really enjoyed the experience.

The Autumn outing at Bulmore once again was excellent with the course presentation second to none. Well done Charlie and his team, thanks to mem-



bers, and Council for courtesy of the course. Thanks to the Bar staff and Catering Manager for the service through the day.

A few surprises in the winners circle and the Old Rule 19 will be thrown about, the results as follows: Scratch S. Bulloch, Fereneze, 66

Cat 1. 1. G. Bruen, East Kilbride, 4-6 = 68; 2. A. Bayfield, Buchanan Castle, 78-9 = 69 (B.I.H.); 3. S. Taylor, Glasgow, 70-1 = 69.

Cat 2. 1. J. Young, Douglaston, 74-17 = 57; 2. J. McCormack, Cawder, 79-16 = 63.3. S. Brawley, East Kilbride, 80-16 = 64.

Cat 3. 1. R. Grainger, Cawder, 77-20 = 57; 2. G. Skewer, Balmore, 91-22 = 69; 3.C. Fulton, Douglas Park, 98-28 = 70. Apprentice Trophy. G. Bruen, East Kilbride. Trade. D. Duchie, Aitkens, 75-4-71. Visitors.I. Murchison, Renfrew, 78-10 = 68. Well done everybody. Hope you had a good day.

A few dates to note. Annual Dinner. November 29, at the Admiral Bar; AGM/Games Night -December 5 at the Claremont.

If anybody has anything they wish to put into the magazine then please contact me at 0141 942 5554.

S. Taylor

#### North

It was second time lucky for the Section outing to Grantown-on-Spey as this year we had no problems during a wonderful day at the Speyside venue, and it was certainly worth the wait as Ken Kinnaird and his staff had the course in excellent condition. The lucky winners on the day were as follows: Scratch. 1. Bradley Wood, Westhill, 70; 2. and Committee Trophy, Iain Macleod, Tain, 74 bih Cat. 1. 1. Neil Sadler, Grantown, 66; 2. Colin Mackay, Cruden Bay, 70 bih; 3. Iain Gunn, Strathpeffer, 70. Cat 2. 1. and Head Greenkeeper Trophy Agg, Kenny Kinnaird, Grantown, 67; 2. Derek Anthony, Duff House Royal, 68; 3. John Geddes, Ellon, 71. Cat 3. 1. Chris Cumming, Fortrose, 61; 2. Keith Wood, Hazelhead, 67; 3. Colin Burgess, Forres, 70;

Veteran. 1. Allan Grant, 69 2. George Hampton, Pitlochry, 73. Apprentice. Ross Macleod, Forres, 73. Guest. Mark McAlpine, 62. Trade. Alex Cruickshanks, Daval, 69 bih. Consolation. Don Dingwall.

Nearest the pin at the 16th, winning a trolley kindly donated by Titleist, Colin Mackay, Cruden Bay, and at the 8th, Bradley Wood, Westhill. Longest drives Class 1. Neil Hampton, Class 2. Gordon Mckie, St Andrews, Class 3. Brian Cocker, Alyth. The Meldrum Trophy for nett aggregate was won by Gordon Moir, St Andrews. Kevin Fowler, Fortrose, was the winner of the card draw for the BIGGA blazer. 200 Club winners were May £30 Brian Strachan, Auchmill, June £30 John Taylor, Forres, July £40 Steve Simpson, Fraserburgh, and August £100 Richie Ewan, Nairn. Overall a great day, thank you to everyone at Grantown-on-Spey.

Staying at Grantown briefly, Stewart Smith has been working on the course for the Summer and would like to pursue

a career in Greenkeeping, so if any courses in the area are looking for a trainee, Stewart can be contacted on 01479 872428.

George Rollo rejoins the Section, George is Greenkeeper at Gairloch.

The lucky winners of the Patron award for 1996 are Stuart Hogg, Fortrose, and Steve Sullivan, Craigie Hill, who each receive £200 to be used for educational purposes, a course or trip to BTME at Harrogate. We are indebted to the members of the Trade who contribute to the Patrons Scheme and therefore make awards like this possible.

The AGM will be a Cullen GC on Thursday November 7, at 3.45 pm after the Annual Chairman, Vice Chairman's golf match, please attend and have your say in the running of your Section.

Finally the Committee are putting on a free bus from Aberdeen to Ellon for the Dinner/dance on November 29, phone Sam Morrison on 01224 705083 for details of pick up points. Iain Macleod



#### NORTHERN REGION

Bob Lupton  
Tel: 01782 750539

#### North East

On September 19, the City of Newcastle GC hosted our Autumn competition. Congratulations go to Head Greenkeeper, Ken Rutherford and his staff, for excellent condition of the course. Our thanks to the following giving donations Shorts of Whitburn, Course Care, Billy Thompson, Amenity Technology and Rickerby's.

Best Gross. A. McSure, Whickham GC, 72; Ransomes Cup. J. Redhead, City of Newcastle GC, 83 - 11 72 nett ; Greenlay Cup. G. Sauder, Slaley Hall, GC 76 - 5 - 71; Feursters Shield. B. Hughes, Whickham GC, 93 - 20 - 73; D. Cuthbertson, Slaley Hall GC 75 - 3 - 72; Slaley Hall GC; A. Callan, Prudhoe GC, 78 - 4 - 74; S. Pope, Tyneside GC, 83 - 9 - 74; D. Street, Boldon GC, 90 - 16 - 74; T. Mooney, Boldon GC, 102 - 28 - 74.

Thanks to Stuart Ashworth, of Amenity Technology, for donating a Large Bottle of Champagne for the lowest scores on par 3. This was won by Mal Lathan, of Hexham GC, with a score of 1 under par.

The last golf event of the year takes place at Matten Hall G C for the annual 4BBB match against the S E Scotland section.

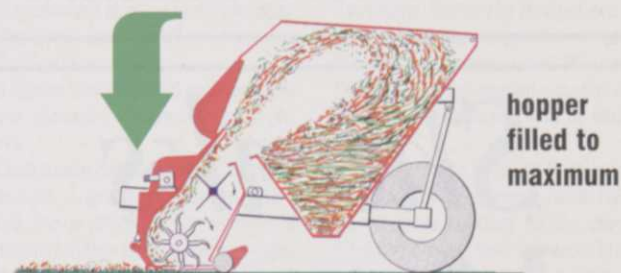
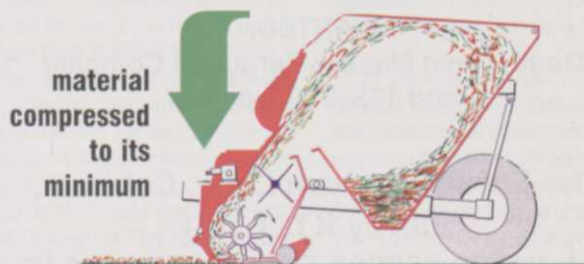
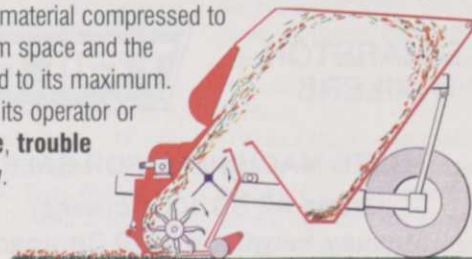
J. S Richardson

#### North West

Another busy month in the N/W calender, with friendly golf, serious golf and International golf. Firstly the friendly golf which was the annual match with the golf club stewards. This was played at West Derby GC with two teams of 16. The result was win for the N/W greenkeepers, with some good golf played which was reflected in the close scores. Chris Sheehan, the N/W Chairman, and his staff had the course in great condition and once again the greenkeepers were kindly sponsored by Gary Worrall Ground Care. This annual match will hopefully continue

# MORE RUBBISH FOR YOUR MONEY

The Turf Tidy's unique suck and throw developed by Charterhouse ensures that every load taken to the dump comprises material compressed to its minimum space and the hopper filled to its maximum. This saves its operator or owner **time, trouble and money.**



It's only with the  
**Charterhouse Turf Tidy that you get  
MORE RUBBISH  
FOR YOUR MONEY**

The multi-functional  
*Charterhouse*  
**Turf Tidy**

**scarifies, flail mows, and then sweeps up**

For more details send this coupon to Charterhouse Turf Machinery Ltd, FREEPOST (GI/2283), Haslemere, Surrey GU27 1DW.

Name: ..... GI.11.96

Position: .....

Address: .....

Postcode: ..... Tel: .....

AD REF 130

# SENDMARSH TRACTORS

DISTRIBUTORS OF GROUND CARE AND MAINTENANCE EQUIPMENT

MAIN AGENTS FOR



MASSEY FERGUSON



A S MARSTON  
TRAILERS



USED MACHINERY FOR SALE

Grade All SS 100 Screener  
Massey Ferguson 1010 Compact

WANTED:

Good, clean Massey Ferguson Compact  
and 135-240 Tractors

The Forge, Ockham Lane, Cobham,  
Surrey KT11 1LU

Tel: 01932 866626 Fax: 01932 863046

# Shanks Mowers

EXPERIENCE OUR SERVICE

*Specialist maintenance of all  
professional turfcare machinery*

RANSOMES

JACOBSEN

ALLETT

CONTACT US NOW AND USE  
OUR EXPERIENCE

GROVE WORKS, BENSHAM GROVE,  
CROYDON, SURREY CR4 8DA

☎ 0181 771 4811 (Telephone & fax)



## Turf-Care Supplies:

- Fertilisers
- Soil Conditioners
- Wetting Agents
- Pesticides
- Grass Seeds
- Turf
- Line Marking Materials
- Sports Equipment
- Top Dressings
- Soils & Sands
- Composts
- Bark
- Tools

## Engineering Services:

- New Machinery
- Reconditioned Machinery
- Service
- Repairs
- Overhauls
- Spare Parts
- On Site Servicing and Repairs

## Hire and Contract Services:

- Specialist plant hire
- Verti-draining
- Aerating
- Top Dressing
- Over-Seeding
- Water Injection Aeration
- Grass Cutting
- Spraying

For all your Turf-Care needs

PARKER HART

T. Parker & Sons (Turf Management) Limited,  
Malden Green Farm, Worcester Park, Surrey KT4 7NF  
Tel: 0181-337 7791 Fax: 0181-330 7392

for years to come.

The serious golf started with the Autumn Tournament at Wilpshire GC. This course with some great holes, and tight lies, was in excellent condition, thanks to Bill Horvath and his staff. There was a stiff wind blowing on the day, which I am told is the norm for the course and listening to some of the stories in the club house, there were so many reloads on the water holes that floating golf balls might be a good idea. I would like to thank Wilpshire GC for allowing us the courtesy of their course, and the club facilities, Mike and Doreen the steward and his wife for the lovely meal, and Bill and his staff for producing the best greens that I have seen in a long time.

The prize table was once again a fine display thanks to our friends in the trade and these were supplied by Richard Campey, Miracle Professional, Sisis, Pattissons, Gem, Premier Turf Dressings Ltd, Martin Bros, Farmura, Rhone Poulenc, Aitkens Sports Turf, Burrows, Acorn Equipment, Bathgate Top Dressings, Strike Top Turf.

The results were:- Best Gross. Tim Nolan. Best Nett. Nathan Berry, Over 55's. Bert Cross, Aggregate. Bert Cross, 2. Nett Bert Cross 3. Mark Haines 4. Chris Leeming 5. Tim Nolan 6. Paul Bertenshaw 7. Stephen Johnson.

The International golf was of course the Hayter International played between the Americas and The Rest of the World. This competition required a first class true links course and was played at West Lancashire GC which fitted the bill perfectly. John Muir and his staff had produced a course second to none, for this the first of the Hayter International Tournaments played on the same lines as the Ryder Cup. I had the pleasure of meeting all the competitors and many friendships were formed. I am sure you will have seen all the reports in the recent issue of Greenkeeper International so I will leave it at that and hope that this competition will continue for many years to come.

Next was the move to Fairhaven GC for the Hayter National Tournament where the qualifiers from five regions plus teams from Eire and Northern Ireland played for the National Trophy plus many other prizes. The winner was Steven Heap from Midland Region. The team prize of £500 was won by the Northern Region.

An educational evening sponsored by British Seed Houses has been arranged at Mere G&CC on Tuesday December 10 commencing at 7pm to be followed by a supper. The speaker is Mike Robinson, President of the seed research of Oregon and the subject is seed breeding. There is no cost and your club officials will be welcome. If you are interested please contact me no later than December 3 with names to allow for seating and catering on 0151 724 5412.

Bert Cross

### Northern

At our invitation day at Bingley St Ives we had an excellent turn out. Thanks to Joe Baxter and his gang for turning the

## Around the Green



course out so well. Also many thanks to John Walker, of Ritefeed (UK) Ltd, for putting up full sponsorship of the prizes, many comments were made on the high standard of prizes on show. The results for the days better ball competition were as follows: 1. Alan Baxter & Mary Welch; 2. Peter Thompson & David Brook; 3. Tony Gerrard & G Gerrard; 4. Steve Midgley & P Hancock; 5. Colin Garnett & D Croll; 6. Alan Dyson & C Bottomley; 7. Dave Collins & W Murgatroyd; 8. Robin Smith & J Peacock.

Many thanks to Mel Guy, Dennis Cockburn and the rest of the committee for their help on the day. Thanks also to the trade lads for bringing raffle prizes along.

On behalf of the Northern section I would like to welcome Mr Melvin Guy, of Greentech, on being newly elected as the section's President. I am sure Mel will continue to serve the section well and carry on his hard work and effort for the section.

Dates for your diary: Winter Golf - Selby GC, December 11, '96. Limited places book early. Annual Dinner - Wetherby GC, March 15, '97.

Any member wishing to volunteer for helping out at the BTME on the 22nd - 24th January 22-24, '97 please contact myself at 1 Cockley Meadows, Kirkheaton, Huddersfield, HD5 0LA. Tel: 01484 519829.

Finally I would like to congratulate Phil Batsey, from South Bradford GC, on recently getting married to Amanda in Gretna Green. Simon Heppenstall

### Sheffield

In September three of our members played in the Hayter Final at Fairhaven GC, they were Allan Allsop, Colin Hopper and Paul Neve.

Paul Neve did very well by coming second in his handicap division and he came second in the overall competition. Well done Paul!

All three of them were members of a winning team as the Northern Region team won the regional team prize, well done lads!!

Also in September Derek McJannet played in the Hayter International Cup at West Lincs GC. Derek halved his four ball match and won his singles match, but the team just got beaten by the Americas. Well done Derek.

Our congratulations also go to David Milbourne who was recently elected to the BIGGA Board of Management.

Our Christmas competition will be held at Wortley GC on November 27. Please return entry forms early! Thank you.

Our next lecture is on December 12 at Rotherham GC at 2.30 pm and will be

given by Mr C. Peel from ADAS. J.V. Lax

### MIDLAND REGION

Peter Larter  
Tel: 01480 437507

### East Midlands

This year's autumn Golf Tournament was held at Ramsdale Park on September 12, with a turnout of 35 members (which was surprisingly less than normal). Despite difficult windy conditions some excellent golf was played with the category winners as follows.

Category 1: 1. P. Forshaw, Ramsdale Pk, 77 - 6 -71; 2. P. Billings, Cotgrave Place, 82 - 7 -74; 3. P. Tatlow, Kedleston Pk, 80 - 6 - 74. Category 2. 1. I. Needham, Beedles Lake, 86 - 14 - 72; 2. T. Foster, Cotgrave Place, 89 - 16 - 73; 3. M. Smith, Ramsdale Pk, 91 - 17 - 74. Category 3. 1. M. Bindley, Kirby Muxloe, 91 - 21 - 70; 2. C. Bates, Willesley Pk, 106 - 28 - 78; 3. T. Allard, Charnwood, 119 - 28 - 91. Trade and Association. 1. G. Thurman, Charnwood, 81 - 8 -73. Nearest the pin: D. James, Scarptoft. Longest Drive: R. Barker, Kirby Muxloe.

The highlight of the day was seeing our Chairman chasing his scorecard across the 12th Fairway and only just retrieving it before it blew out of the bounds.

Our section would like to thank the Centre Manager of Ramsdale Park, Brian Jenkinson, for allowing us courtesy of their course and also to Course Manager, Martin Smith, and his staff, for preparing such a fine course.

A special thanks should go once again to our sponsors Charnwood and Highmeres

Lawnmower Services for supplying us with such a grand prize table. Also I would like to thank all the committee members for their help on the day, especially to Gavin Robson who, despite being unable to play, was willing to make the long journey to be starter for the day.

Congratulations to Steven Heap, of Rothley GC, for winning this year's Hayter National Final at Fairhaven GC with a nett score of 74.

Two dates for next year's diary Spring Tournament and Hayter Qualifier May 1, Cosby GC; September 3, Autumn Tournament, Chevin GC. Thanks again to both golf clubs for allowing us to stage tournaments.

Finally I would like to wish both Robert Coulter and Mark Huthwaite of Ramsdale Park speedy recoveries after their recent car accidents.

Antony Bindley

### East of England

The East of England Section took home the Chandlers Challenge Cup when they defeated the East Midlands Club Secretaries at Blankney GC.

It was the first win by the triumphant greenkeepers, having narrowly lost on the last green last year.

The result was 51/2 -21/2, but the secretaries got their own back by winning every ticket in the raffle.

Thanks to Jim Carr for sponsoring the

event and supplying the raffle prizes.

Greenkeeper names only:

Mick Wood and Alan Buckley, lost 2/1; John Henson and Barry Anderson won 4/3

Charlie Macdonald and George Venables lost 1 down; Peter Down and Peter Fell, won 5/4; Josh White and Jim Burkett, won 1 up; David Welberry and Les Purdy, won 4/3; Graeme Macdonald and John Scotney won 3/2; Phil Wilkinson and Ted Lake, halved.

The Lambs Lawnmowers Cup was won by Barry Anderson, of Toft GC, with 37 points. He was a very late entry, only hours before the competition started, but his impressive points tally was four ahead of Charlie Macdonald on 33 points. Third was Allan Buckley, Peter Fell and George Venables all on 32 points.

It was a pity our main sponsor Robin Lamb could not take part as he was on holiday in Egypt, but thanks for donating some prizes. The other sponsors were Fieldcare, Aitkens, Collier Turfcare, Banks Topdressing, Purdy's and Chandlers. Thanks to them all for making it a super day.

The day was held over one of my favourite courses - Luffenham Heath. This must be one of the most natural courses in the country and manicured to a superb quality by Head Greenkeeper, Dick Fogg, and his staff. The course winds gradually uphill through testing individual holes lined by Hawthorne, Gorse and Heather and you finish with a superb par three - one of the most picturesque views in Rutland. This hole was our nearest pin sponsored by Rhone Poulenc and won by Michael Wood.

My last thanks go to the Secretary, Ian Davenport and Luffenham Heath GC, for extending us courtesy for the day and providing a super meal and wine.

The Hayter National Finals at Fairhaven saw John Henson and Graeme Macdonald represent the Midland Team. Graeme fared well in testing conditions and picked up best gross overall -all four and fives, keeping six off his card - and second nett in Category one and the Midland Team finished second. Fairhaven

GC was in great condition with the fastest greens I have played on this year. The course played exceptionally long off the back tees and to cap it off the wind was blowing a gale over the 6883 yards course.

Many thanks to Kim Macfie and Hayter for making our stay and the tournament a memorable occasion and such a success.

Please ring 01733 260297 if you have anything that may be of interest to your fellow greenkeepers.

Graeme MacDonald

### Bucks, Berks and Oxon

Well it had to happen some time, a golf day that was over subscribed. We originally booked our Autumn Golf Tournament for a maximum of 40 people with strong reservations about hitting the magic number. Although we were cutting it fine when sending out the entry forms



(the phone never stopped ringing) Almost as soon as they were posted they were returning through my letter box to the point that I had to disappoint one or two people who left it late. The final total squeezed in was 50. Thanks to Studley Wood for allowing the extra players to participate.

The weather forecast for the day was a bit dodgy (me without waterproofs again) But thankfully it turned out fine. It had to be said the standard of golf was outstanding, with the adjudicators requiring calculators to add up the Stableford points. Results: 1. D. Schillaci & M. Jones (47am & 43pm = 90 pts); 2. T. Hookham & T. Strange (48am & 41pm = 89pts); 3. J. Scoones & I. Scoones (50am & 38pm = 88pts)

NOTE: I think its about time we appointed a handicap secretary. Any volunteers phone me.

Wooden Spoon: P. Gethin & M. Gethin 59pts

Many thanks to Studley Wood for their hospitality on the day. Congratulations to Ian and his staff for preparing the golf course, all comments from those who played were that the greens were superb. I certainly holed a few putts. Thanks to all the trade support as usual especially Richard Haynes, Avoncrop, for taking charge of the scorecards and Steve Denton, Patissons, for breaking into my partner's car to retrieve his keys! Definitely a sign of misspent youth.

The Rigby Taylor Final is between T. French & G. Wheeler and P. Critchley and J. Thorne. Good luck to both. Next golf day is the Turkey Trot & AGM to be held at Calcot Park GC (Reading) on Thursday, November 28. Entry forms will be arriving through your letterbox soon.

Lindsay T. Anderson

## **SOUTH WEST AND SOUTH WALES REGION**

Gordon Child  
Tel: 01803 844056

### **South West and South Wales Region**

The Region's Seminar, in partnership with Rhone Poulenc, at Cannington College on November 27 will include talks by Paul Clifton of Rhone Poulenc, Bill Lawson, George Brown, Gordon Irvine, an HND student and the BIGGA Roadshow. Among the topics are the 50s and the year 2000.

Among those we would like to congratulate this month are Ivor Scoones, Long Ashton Golf Club, who represented the Region in the Kubota Challenge at The Belfry last month; Paul Jenkins, Lilley Brook GC, who won the Regional nomination for the Miracle Professional Premier Greenkeeper. We wish him luck in the National Final and we express our thanks to all those who took part in a very close contest; the students who won the college nominations in the Toro Student Greenkeeper of the Year Award and we wish the eventual winner from the Region good luck in his achievements. Finally staying with education we would like to thank all those who have achieved their D32 and D33 NVQ Asses-

# Around the Green



sor certificates on recent courses.

Hayter Challenge Report – When the Region's team of nine travelled to Blackpool for the Final at Fairhaven GC our success on the course was limited with the exception of Phil Wentworth who did us proud by winning first prize in Category 2 and Bob Walker (Rock on Tommy) who somehow won the longest drive. The trip was excellent full of good food and enjoyable things. I did thank them all for their support and acting as fine ambassadors for the Region.

BTME Special Express January 21-24 1997 – Once booked you will be hooked on going to the main greenkeeper event. Take advantage of our bargain offer, and don't forget those fortunate enough to win the £100 voucher draw can use these towards payment to the Region's Special Express. You can ring for a reservation now. Don't leave it too long as bookings are well on the way at only £125 for members. Please don't forget that your other half is very welcome at £100. Give her a break! The banquet entertainer is Bobby Davro supported by Laine Kennedy and tickets are £28 each.

Westurf at Long Ashton Golf Club on April 30, '97 – Looking ahead to 1997 any ideas or comments for improving this already popular event will be most welcome. Further details will be available at a later date.

The Hayter Challenge Regional Final will be at Burnham & Berrow GC on June 11, '97.

Into the distant future the BIGGA National Tournament for 1999 falls to the Region to host and we are pleased to announce that his will be held at Royal North Devon GC, Westward Ho! on August 1-3, 1999, the oldest links course in England.

Marion Child

### **South Coast**

Our Christmas Turkey Trot will once again be held at Royal Winchester GC on December 2. This will be followed by our AGM – by the way the AGM is not December 3 as stated in the section programme. On completion of the AGM there is the Christmas dinner and prize giving. All members wishing to play should send their handicaps and a fee of £15 to Mark Webb, 12 Lime Road Arelsford, Hants SO24 9LD Tel: 01722 330277 to be received no later than three weeks before the AGM.

A last reminder for the Regional Seminar at Cannington College on November 27 for those of you who have not booked in contact Gordon or Marion Child on 01803 844056. Please make a big effort to attend as some very good speakers have been arranged for you.

On September 12 the South Coast Greenkeepers played the Secretaries at

Lee on Solent Golf Course the result 4-2 to the Greenkeepers well done lads and a good time was had by all. The day's events were well organised and everybody thoroughly enjoyed themselves, so much so that it is hoped that this will become an annual event, in fact Mark is already making arrangements for next year – possible venue Arelsford Golf Course. A trophy was supplied by Course Care who we thank for their generosity. I am told the course and especially the greens were in excellent condition – well done Steve and staff. A big thank you to the catering staff who provided a superb meal and last but not least, the Captain, Committee and Members for making everybody so welcome, their hospitality was second to none.

Arrangements are at present going ahead in organising our Section Seminar at Sparsholt College on February 18, 1997. The cost will be £15 for members and £20 for non members; this includes lunch. One speaker has confirmed, that is Scott MacCallum, our Editor. Last year speakers were of a very high calibre this time we hope to give you even better value for money. Up to now we have four sponsors Huxleys Grass Machinery, Its, Gem and Driving Force Leisure. These companies will be showing off their products, more details will be published when known.

Lastly, I have one more name to our list of assessors that is Simon Pickett, the Course Manager at Blacknest GC, this is North Hampshire. Anyone wishing to be assessed for their NVQ's or has any queries you should contact Simon, who I am sure, will be only too pleased to help you. While on the subject of NVQ's all our assessors in the section tell me their telephones have been quiet. All the assessors in our section are qualified to examine you on various stages of your NVQ's – make use of them and contact them. NVQ's are our recognised qualifications – they are what our employers will be looking for on our CV's when seeking new positions.

Ken Lodge

### **Devon and Cornwall**

Over the summer months the Section conducted a survey on aspects of working conditions and BIGGA. I'm pleased to inform you that the survey has now been completed and results will be available at all our sections meetings this winter. On behalf of your section committee I would like to thank all of you who spent a few minutes to complete and return the survey.

Our last summer meeting was held at St Mellion International on Wednesday September 18. Course Manager, Robert Brewer, gave members present a detailed guided walk around the Nicklaus course and his maintenance compound which has seen a few changes over the last year. Our thanks to Robert and his staff for the excellent evening. Also, I would like to thank Steve Evans for his organisation of our summer meetings.

Once again Christmas is approaching fast and with it our Christmas meeting which will be held at Okehampton GC on

Wednesday, December 11. As in previous years numbers will be limited to the first 80 members so to avoid disappointment please return your entry with the correct money as soon as possible and before the closing date.

The day will start as usual with golfing members competing in greensome format for the P. J. Flegg Trophy with non golfers having a guided walk of the course with Head Greenkeeper Richard Wisdom. Lunch will be followed by our afternoon cabaret and the day will conclude with raffles.

The Region's annual seminar will be held at Cannington College on Wednesday November 27 by now you should have all received details of the seminar programme if you haven't and would like to book your place or wish to know more about the programme please contact Gordon or Marion Child on 01803 844056.

Places on the Region's package to BTME 97 which includes transport, accommodation & entry to the BTME show & Seminars are going fast. To avoid disappointment you are advised to return your booking form as soon as possible.

Richard Whyman

### **South West**

With the busy season now over more time can be devoted to education with the report this month containing three reminders for education at National and Section level.

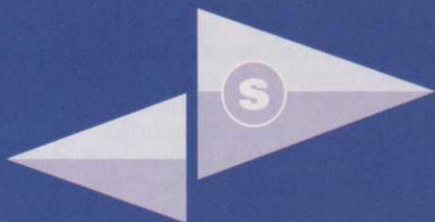
The yearly educational seminar at Cannington College takes place on November 27. Many members will have received application forms for the day but if you still wish to register then please contact Gordon or Marion Child on 01803 844056.

Forms for BTME 1997 have now been distributed to all Head and Deputy Head Greenkeepers in the Section with the intention that they inform their staff of the event. If you do not have access to one of these forms then please once again speak to Gordon or Marion Child on the above number to reserve a place on the coach. The cost for members is £125 for three nights bed and breakfast in York which includes entry to all seminars and the exhibition. The cost of the banquet ticket which is optional is an extra £28.

As always educational courses at section level are available with some being arranged at present to cover PA1, PA2 First Aid etc.

The Hayter Final took place at Fairhaven GC on September 18 and although there were no outright winners for the South West Section everyone who participated enjoyed the event. Thanks once again to Hayter for their continued sponsorship.

This year's AGM at Bristol & Clifton GC takes place on the November 14 with Rigby Taylor sponsoring the day. A morning round of golf will be followed by a short talk from a guest speaker before completing the day with the section AGM. There will be vacancies on the section committee so any of you who feel



## STANDARD GOLF

**SETTING THE  
STANDARD IN  
GOLF COURSE  
EQUIPMENT**

Ask for our full colour catalogue

Standard Golf (UK) Ltd  
20 B Buckingham Avenue  
Slough Trading Estate  
Slough, Berkshire SL1 4QA

Telephone: 01753 537410  
Fax: 01753 534661

AD  
REF  
421

*Quality First*



**Specialists in land drainage,  
irrigation installations,  
golf course construction and  
maintenance**

*Design, Supply and  
installation of*

***RAIN BIRD***

*Irrigation Systems*

**M J ABBOTT LIMITED**

Bratch Lane, Dinton, Salisbury, Wiltshire SP3 5EB  
Tel: 01722 716361 • Fax: 01722 716828

AD  
REF  
296

# Cast aside your cares



**Levington Turfclear® the double action worm control and fungicide for clean and healthy turf. Banishes casting worms and Fusarium Patch from all playing surfaces in one cost-saving operation.**

- Contains the most effective worm-cast control agent available.
- Systemic fungicidal action without risk of damage to fine turf.
- Unaffected by rain or irrigation.
- Original flowable formulation now available in 800ml and 5L packs to suit all needs.
- Turfclear WDG provides convenient, pre-measured, water soluble sachets of water-dispersable granules to increase user safety and ensure accurate dosing.

**ALTOGETHER AN UNBEATABLE COMBINATION**



If you would like to know more please call our Technical Services Manager on 01473 830492 or contact your local Area Sales Manager:

South - Chris Briggs  
Tel: 0378 603103 (mobile) or 01273 675966

North - Roger Moore  
Tel: 0378 603052 (mobile) or 01382 710076

Scotland - Craig McClymont  
Tel: 0378 603050 (mobile) or 01383 851007

Read the label before you buy: use pesticides safely.  
TURFCLEAR contains carbendazim. TURFCLEAR is a registered Trade Mark and THE LEVINGTON DIFFERENCE is a Trade Mark of Levington Horticulture Ltd.  
© Levington Horticulture Ltd 1996

AD  
REF  
102

you could contribute some time to running the section please ensure that you attend.

Finally the Christmas Tournament takes place this year at Worlebury GC on December 12. Please find time to attend this popular seasonal event.

Kevin Green

### South Wales

Our recent annual match versus the Golf Club Secretaries took place over the Southerndown golf course near Bridgend, the weather was superb the course could not have been better, altogether an excellent day!

A good equal attendance this year of 8 teams a piece resulted in a 4 1/2 to 3 1/2 win for the secretaries.

Results: Gerwyn Price/Ceri Jones v P. Plumb/R. Bennett Lost 3/2; Andy Roach/Malcolm Davies v D. Peak/D. Roderick Won 2/1; David Gladwin/Daryl Bray v J. Graham/G. Rees Halved; David Jenkins/Mike Norfolk v B. Player/H. Edmond Won by 1hole; John Phillips/Alan Richards v V. Davies/ D. Lloyd Lost; Herbie Probert/ Peter Edwards v K. Thomas/E. Evans Lost; P. Lacey/G. Johnstone v J. Whitaker/B. Jones Won by 2 holes

My sincere thanks to everyone for making the effort to turn up and ensure that this annual event is such an enjoyable and keenly fought competition. My thanks also to Fred Crossman for his organisation of this fixture, it was so good to see Fred in attendance despite his recent misfortunes of health and in such good spirit. Lastly I would like to thank everyone at the Southerndown GC for their part in ensuring that an enjoyable day was had by all. Gary Johnstone and his green staff for the course, Ann Fletcher for the feast, Jim Graham and the Executive Committee of Southerndown for their courtesy.

Peter Gee, 36, is the new Course Manager of Langland Bay GC, near Swansea. Peter, a Kent man, comes to Langland having been previously at the Ridge GC, Maidstone. We wish him well in his new position.

Double celebrations in the home of Mr and Mrs Chris Solman at present, firstly on the news that Chris has been appointed the new Head Greenkeeper of the Cardiff GC and secondly on the arrival of his new baby daughter 6lb 5oz Emily Jane. Well Done!

On Thursday, September 12, the Pontardawe GC played host to our Autumn Competition and Jacobsen Cup.

The day was sponsored by Keith Morgan Mowers of Usk. Our sincere thanks to Keith for his continued support. Again the weather was glorious and the course was in superb condition. A credit to Jamie Probert and his staff. 21 Golfers took to the course.

Results: Jacobsen Cup – Nett 67 – Alan Critchton – Kington GC; Waycott Cup – Nett 67 – Richard Patterson – Cradoc GC; Presidents Cup – Andrew Roach – 70 – Haverfordwest GC.

Our thanks to all at the Pontardawe GC for their hospitality and course courtesy, to John and Ben Morgan for the presentations.

## Around the Green



At the Orangery, Margam Park, near Swansea, recently, Celtic Mowers/ Kubota held an open day.

The agenda was a presentation/slide demonstrations of the new Kubota range machinery, including the superb range of compact tractors and an explanation / insight into what Celtic mowers have to offer – machinery hire, sales, repairs, as well as a full range of turf maintenance products ie fertilisers, seed, tools, etc. Then practical demonstrations of the presented machinery followed by a buffet lunch, including the Grandell range ST 30 and super b 2400.

An excellent event made all the more so by the fact that I won first prize in the raffle draw, a ghetto blaster! The only downside being the RSVP's were made by some 75 or so people and only 40 or so turned up! Thanks to Kim Davies, of Celtic Mowers, and Colin Hennah of Kubota for their sterling work, Well done!

Amenity Land Services recently held a seminar day at Usk. The day being primarily to promote a new range of Organic turf fertilisers and soil conditioners.

An excellent presentation and explanation of soil science and the reactions of organics was made by Belgium Agronomist and soil specialist Frans Pauwels.

This was followed by an explanation of each product and its function/benefit to the soil. This presentation was given also by a Belgian, soil specialist, Dirk Creve.

An excellent informative day that was well supported with over 40 people in attendance from as far afield as Worcester and Haverfordwest.

Many thanks to all at Amenity Land Services Limited but especially, John Reynolds for their hospitality.

Finally we would like to congratulate Course Manager, Mark Proctor and his staff at the Marriott St. Pierre Hotel Golf and Country Club, for the success of the recent Solheim Cup.

Both courses have recently undergone many changes and improvements including larger reservoirs, refurbishing of the 11 acre lake, overlooking the 17th and 18th holes and a completely new irrigation system which has been extended to include both aprons and fairways.

The course seen by millions of viewers recently certainly looked the part. Superb in fact, well done!

Peter Lacey

### SOUTH EAST REGION

Derek Farrington  
Tel: 01903 260956

### Surrey

September has been quite an eventful month as far as golfing events are con-

cerned. First, the inter country charity event which was organised by C. J. Collins Construction Ltd was not only a very enjoyable but also a hugely successful day C. J. Collins managed to raise in the region of £1400 to be donated to St Catherine Hospice. The man who takes the credit for this most successful event is Barry Pace, from Collins, who organised teams of 10 players from Kent, Surrey and Sussex to compete for the inter country charity trophy of which I am proud to say as captain of the Surrey team this year we returned victors by 12 clear points from the opposition which goes to prove which section has the best golfers. Extra thanks go to Birch Grove House Golf Course which was built by Collins and proved to be a real hard test of golf. Thanks to Course Manager, John Hills, for his extra efforts for the day.

The Huxley bowl came to a close with Epsom Golf Club's David Jones and Mark Harvey beating myself and Roger Glazier 5&4 over 36 holes. Well done to the both of you.

The Rigby Taylor Autumn Tournament was held this year at the Effingham GC. Thanks firstly to Effingham for allowing us to hold the event at the club, and also to Rigby Taylor for their sponsorship and to Sendmarsh Tractors for their co-sponsorship thanks to both of you for your generosity not forgetting Peter Broadbent and his staff for turning the course out in such great shape the course is a real credit to you all.

Results: 1. Kevin Boxall 56pts; 2. John Mathis 55pts on court back; 3. Dougie Fernie 55pts; Nearest the pin am Mike Wells, pm Steve Johnson. Longest Drive Terry Edwards

Forthcoming events include the first winter lecture which is to be held at Kingswood GC on Nov 20. The lecture will be given by Liquid Sod on the subject of nutrition amongst other things please try and support the evening 7 - 7.30pm. Dress smart and casual.

The turkey trot on December 3 at Guildford GC this also includes the AGM.

David Gibbs

### East Anglia

This was the last golf meeting of the season. So on the Wednesday, October 9, 40 of us gathered at Stapleford Abbots GC in the heart of Essex to do battle. Our thanks to Phil Newman for letting us use the course. The captain Ken Taylor for presenting the prizes, Martin for the course being in such good nick, John the Chef and his staff, especially, Joe.

Special thanks to Rigby Taylor and Tuckwells for sponsoring the event. Thanks Mark and Neil.

On with the prize winners:

Cat 1. 1. Alan Carter, 41 pts; 2. Andy Sheeham, 39 pts; 3. Richard Pride, 38 pts. Cat 2. 1. Tim Russell, 44 pts; 2. Ian Willett, 43 pts; 3. Sam Sylvester, 38 pts. Cat 3. 1. Keith Tittshall, 40 pts; 2. Wayne Chapman, 35 pts; 3. Todd Huddleston 34 pts. Guest Prize sponsored by Bourne Amenity. N. Howard, 39pts,

Longest Drive sponsored by Turf Actant and Oliver Seeds, Greg McHugh. Nearest Pin – 2nd sponsored by Scotts Company. Nearest Pin – 3rd sponsored by Barenbrug – Ian Willett. Nearest Pin – 4th sponsored by Fen Turf Dressing – Morris Smith.

Thanks to: Green Keeping Supply Company, Parker Hart, Grass Hopper, Kings, Colliers Turf Company, Avoncrop for the raffle prizes.

Thanks to Michael Virley for checking the cards and Ian Willett once again for selling all those raffle tickets. Good luck with the new job Ian.

A seminar was held at Writtle College on September 24 where 33 greenkeepers and trade gathered to listen to Ian Fear, of Atterton and Ellis, talking about the benefits of golf clubs having their own grinding machines, and with some good slides he made it very interesting.

The other speaker was Ivan Miller, of John Deere, talking about servicing machinery. He also had some good slides about the company.

The meeting closed about 10.30 and we retired to the bar for our raffle.

Thanks to: Dennis Smith, of Parker Hart; Clive Pearson, of Gem Professional, Graham Paul, of King's Horticulture and Colin White, of Avoncrop, for the prizes

That's about it for this time. Just to say I hope we can arrange an annual match between Essex and East Anglia in the future.

Don't forget the AGM at Aldburgh.

See you all there.  
David Wells

### Kent

First of all, apologies for missing last month's magazine. Believe it or not I have been very busy.

Our last tournament was held at Knole Park in Sevenoaks. On a sunny day at a very picturesque golf course a good day was had by all. Our thanks must go to Mr. Hoppe, the Secretary, for arranging courtesy of the course and to the caterers for a fine meal. However, the two biggest thank you's should go to Andy Arthur and his staff for presenting a fine course and to Bernard Diddams and Rigby Taylor for superb prizes again.

The winners were as follows: Overall Winner, N. Gillham; Best Gross, J. Bean; 2. Gross – D. Kelso; 2. Nett – M. Arthur; 3. Nett. C. Latham; Longest Drive. J. Askew; Nearest Pin. N. Pullen.

Details of our next tournament including results will appear next month.

Our best wishes go to Callum Arthur who has left Knole Park to go back to Scotland.

Your Committee are considering starting a foursomes knock-out for 1997. Please let me know if you are interested. We also have an opportunity to visit the Ransomes Factory at Ipswich. Again, let me know if interested.

Our next tournament is the turkey trot at Darenth Valley in December. Letters will be going out in November. Happy autumn maintenance.

Huw Morgan



# St Andrews builds for the future

The need for new greenkeeping facilities at St Andrews had been apparent for some time.

For more than 40 years, the staff looking after the original four courses on St Andrews Links had worked out of ageing buildings situated at the southernmost end of the Jubilee Course – the 18 holes laid out closest to the sea.

The result was that maintenance of St Andrews' four oldest courses, the Old, the New, the Jubilee and the Eden, involved crossing numerous fairways, public paths and tracks and even a now disused railway line, a situation far from ideal, especially during the run-up to important tournaments and championships.

The logistics problem was exacerbated further in 1972 and 1993 following the respective openings of the nine-hole Balgove and the 18-hole Strathtyrum Courses – both located inland adjacent to the Eden Course. The distance now being travelled from the existing Jubilee sheds to mow the most distant tees and greens was almost two miles.

"The facility had simply become inadequate for the staffing levels and the higher standards of maintenance demanded across the links," commented St Andrews Links Manager, Ian Forbes. "It was also in completely the wrong place to look after six separate golf courses."

A decision was taken by St Andrews Links Trust in 1993 to develop two new greenkeeping centres. One would replace the existing sheds to look after the Jubilee, the Old and the New Courses, the other would house the staff and machinery maintaining the Eden, Balgove and Strathtyrum Courses.

Because there was a pressing need for a brand new facility close to the latter three courses, it was decided that construction should start first on the all new Eden Greenkeeping Centre. But where should it be situated?

Initial plans drawn up in April 1994 by consultant architect, Fraser Smart, identified 10 possible locations for the new building. Six of these were quickly discarded as being unacceptable to either St Andrews or the local planners.

The remaining four sites were

then studied in detail with particular emphasis being given to their position in relation to the courses.

"Accessibility and the ease of serving the three courses were paramount in reaching the final decision," pointed out Ian Forbes. "However, selection of the best location from an access and operating point of view had to be set against the fact that this is a very sensitive area. Not only would the new greenkeeping centre be visible from the Old Course and the main road into the town, but it would also be close to the Links Trust offices, the Golf Practice Centre and the reception and ticket office for the three courses

roundings and the required traffic flow without detracting from the building's main function as a working greenkeeping centre.

"We needed to combine a low building, which would have minimum impact on the landscape, with a large internal volume to maximise the working space from an available floor area of 1,000 square metres," explained Fraser Smart. "This was achieved through the use of an asymmetric portal frame design which gave us a low eaves height, yet provided adequate internal headroom and plenty of useable space within the span of the building."

The major problem of low

centre which allows machinery to be driven from one course to another without hindrance.

Machines can also move smoothly from the roadway into the greenkeeping complex en route from the Eden to Strathtyrum or Balgove courses and vice versa. They can also leave the building by a different door to the one by which they entered.

From the beginning, the new Eden Greenkeeping Centre had to include three main elements: Storage for greenkeeping equipment, storage for buggies, and offices and facilities for greenkeepers, rangers and course orderlies.

Because the main workshop will be housed within the new Jubilee building, currently under construction, the Eden has minimal workshop facilities although there is a purpose-built separate covered storage area for fuel, soil and top dressing materials.

While the 'L-shaped layout of the main building has kept the individual internal elements separate, the greenkeepers are sharing rest and wash room facilities with the staff employed on the links to carry out support functions such as rangers, cleansing and waste management, painting and general repairs and maintenance. This integration is proving successful and has helped improve staff relations and the understanding of each other's role.

Concerns about the visibility of the Eden facility from other parts of the links were answered by a 2m high embankment built around virtually the complete complex. Part of this already existed following the excavations for the car park and golf practice centre in 1992. The remainder used soil excavated in preparation for the footings for the new building. This gave a fast, effective screen at considerable cost saving over the trees originally planned.

In designing the building, architect Fraser Smart included several interesting features. Ventilation is natural rather than mechanical combining air entry ducts beneath the eaves and louvered air outlets within dormers set into the roof at the same level as the top of the main doors. Apart from complementing the overall



A 2m high embankment around the facility provides an effective and economical screen. Air circulating through ducts beneath the eaves and in the roof provide five air changes an hour within the building

it would be serving."

While the introduction of a new working facility into the heart of an existing golfing centre brought difficulties of its own, the chosen location did help dictate the final design of the building. "Being adjacent to existing buildings and trees helped," pointed out architect, Fraser Smart. "There is no doubt that other sites would have had far more impact on the landscape."

Initial drawings of the new greenkeeping facility had followed a design which would sit comfortably among the existing architecture of the area, principally low, short span, pitch roofed farm buildings with gables. Once the final site was selected, the basic design and layout was altered to suit the immediate sur-

eaves is providing sufficient height for the movement in and out of the building of tall machinery such as tractors and digger-loaders. This was overcome by setting the main doorways into the roof, dormer fashion, with security provided by electrically-operated roller shutter doors.

The design and positioning of the building, its internal layout and main doorways were dictated by the traffic flow through the site and into the facility. Because the centre is serving three different courses – two in one direction, the third in another – it was necessary to plan separate routes into and out of the building and to the Eden, Strathtyrum and Balgove courses. This has been achieved successfully by installing a perimeter roadway around the

design, the resulting air circulation movement is said to give five complete air changes an hour within the building.

Because all of the washings go to soakaways, proper separation of grass, oil, fuel and silt is essential to prevent soil contamination and waste pipe blockage.

Oil and fuel is handled by three filtering chambers and there is also twin silt traps. Collection of grass clippings was considered a major problem and paid special attention by Fraser Smart. The solution was found in a specially-designed three-stage tumbling filter comprising three chambers of gradually increasing depth through which washings passed, depositing stray grass on the way.

The end result is clean water flowing to the soakaways, leaving grass behind in the regularly-emptied traps.

"In the Eden Greenkeeping Centre, we have a facility which has helped raise the all-round standards and efficiency of links maintenance," commented Ian



The main doors are set into the roof dormer-fashion to maintain a low eaves and building height in keeping with local architecture

Forbes. "From a greenfield site, it was up and running within the three months originally scheduled and was delivered within the planned budget of £525,000. At £400,000 for the building and

£120,000 for the associated services and roads, St Andrews has a cost-effective unit providing one of the best greenkeeping facilities in Europe."

● Next month, the Learning Experience considers the design, management and operation of St Andrews' Eden Greenkeeping Centre from the greenkeepers' point of view.

**THE ONE QUESTION I WOULD LIKE TO ASK OTHER GREENKEEPERS IS:**



"How would you go about getting an annual invitation to the Kubota Challenge?"

**Scott Ballantyne, Cowglen**

## how hard is your bunker?

### Perma-Soil Stabiliser

Perma-Soil stabiliser is a proven soil additive that dries, strengthens, and bonds soil into usable backfill. It minimises subsidence of restored excavations and potholes. It can even hold utility poles in position. Perma-Soil stabiliser increases strength 3 to 16 times more than untreated soil, while retaining original size and shape. Use it for a wide variety of applications to save both time and money.

### How can Perma-Soil Stabiliser help you?

Waterline breaks turns wet soil into usable backfill within minutes. Trenches and excavations - minimises settling of backfill.

### How is Perma-Soil Stabiliser applied?

As soil is excavated, add Perma-Soil stabiliser to the backfill. While your crew makes repairs, your backhoe operator can turn the backfill to mix properly. Place the mixture back into the hole in 6-to 8-inch layers, tamping each layer as you go.

### Perma-Soil is environmentally friendly

Environmentally friendly construction aid which is totally harmless to man, flora and fauna.

**To find out more call 0181 763 8993**

**terra firma** Specialists  
**Marlow House, Kenley Lane, Kenley Surrey, CR8 5DD**  
**Tel: 0181 763 8993, Fax: 0181 763 2588**  
**SPECIALISTS Agents for Perma-Soil**

## NEW IMPROVED go green

A whole lot more in one product

- NEW** Increased longevity of treatment
- NEW** Maximum dew dispersal
- NEW** More effective in cold weather
- NEW** Cultural effects inhibits fusarium patch

**go green** Unsurpassed Technology  
 Concentrated liquid iron and wetting agent

For further details please contact your local distributor or Service Chemicals plc  
**Tel: 01327 704444; Fax: 01327 71154** **SERVICE CHEMICALS**



# KUBOTA CHALLENGE

**After the debacle of '95 our boys improved in the '96 Kubota Challenge but they still didn't win. Scott MacCallum was there to support and record events.**

**H**aving carried the can for the horrendous showing in last year's Kubota Challenge when the BIGGA team came last for the first time in the history of the event it was with trepidation that I made my way to The Belfry for the 1996 event.

The news which greeted me when I arrived was extremely positive. We were in the final, having scraped through on count-back after tying four all with the secretaries. The stars were Raymond Day and Steven Heap who's big wins carried the day.

The other news was that the final had already started and every match was out on the course.

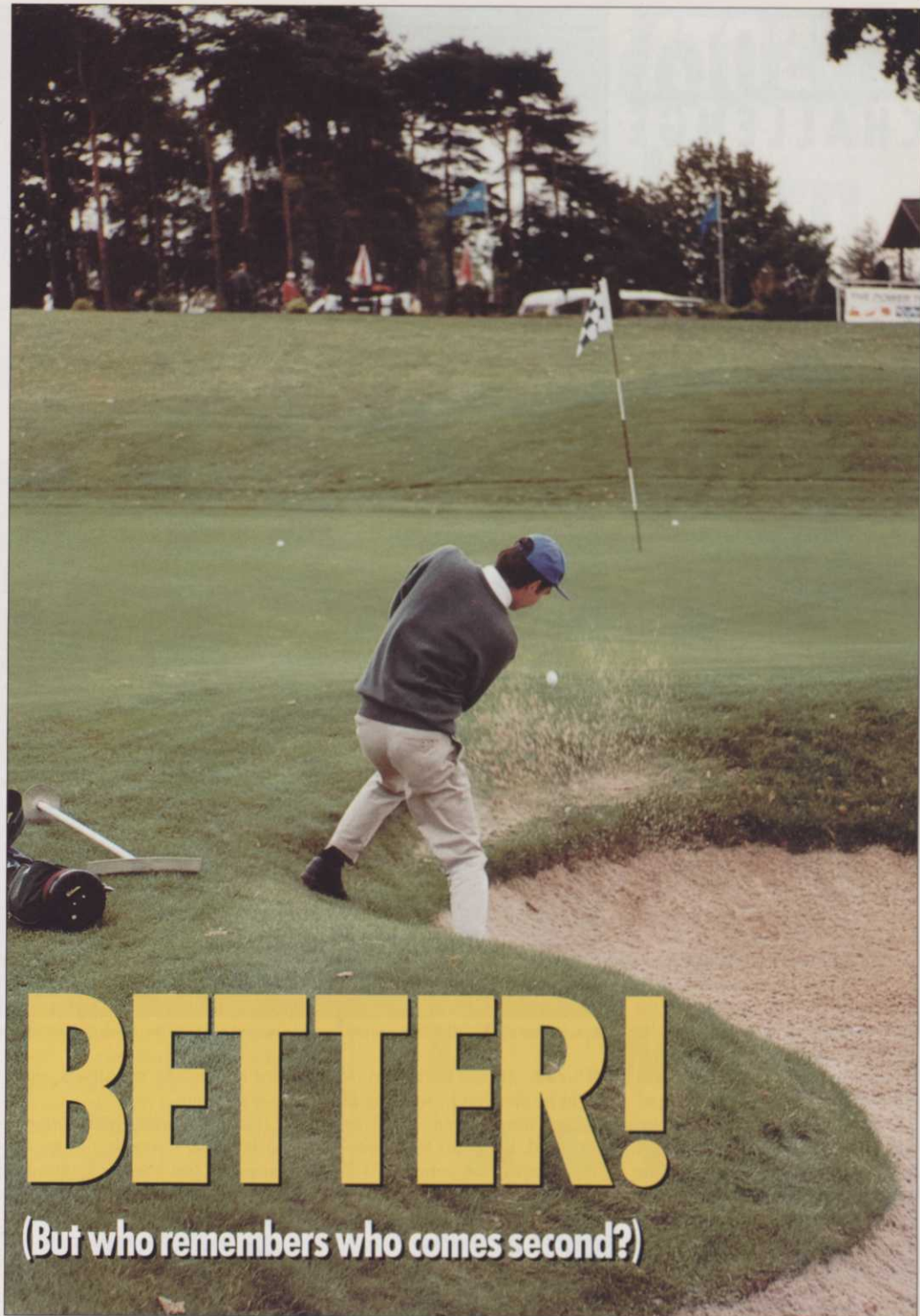
It appeared to me to be a desperate bid to avoid my evil eye after I had "cursed" our team last year and I was still thanking my lucky stars that I possessed a thick skin. It was only then that I discovered that a morning instead of an afternoon start had been adopted due to the hectic Belfry schedule and the traditional drive and chip would be later in the afternoon.

Hot footing it out in to the course and honing in on our lead man, Ray Day, I was about to learn that I was not going to see a great turn around in my own our team's fortunes. Good though our men were playing the defending Champions the EGU were a tough nut to crack and those in the early games who were receiving shots from our boys were certainly making them pay.

By the turn the writing was on the wall. We were well down and a collapse of Greg Norman proportions was needed by the men from Woodhall Spa to deprive them of the title.

Credit where credit is due our magnificent eight fought well but half a point from the first five games was a poor return and meant that the efforts of Neil Maltby and Steven Heap who produced maximum points over the two days and fought back to win their games in the final were in vain.

So who were our representa-



tives in this rare opportunity to represent the profession and how did they fare individually?

■ Ivor Scoones. The team Captain was seven down in the final at the turn. He found sand off the tee at the world famous 10th and BIGGA's photographer recorded his recovery over the water to rough on the right side of the green. He also recorded his mishit chip which left the ball in the rough. Unfortunately he put the camera down just as Ivor chipped in for an unlikely par.

■ Ray Day. Returned to the scene of his stag night a few weeks earlier and was the man on the match in the first round. He won 5&4 and was just one over par in difficult conditions in doing so. I

can only imagine that the celebrations of such a stunning display diluted his display in the final as he succumbed by two holes – although in mitigation, his opponent nearly holed his third at the infamous 18th from across the lake.

■ John Berry. Qualifying for the team by his stunning performance in the National Tournament at Seacroft but he perhaps peaked too early as he lost both his matches. The real tragedy was that he took souvenir pictures of the course during his round only to find he had no film in his camera.

■ Richard Barker. Nobbled Antony Bindley, his First Assistant at Kirby Muxloe, to get in the



**Above: Ivor Scoones collects his ball after chipping in at the 10th.**

**Top picture: Guess who!**

# KUBOTA CHALLENGE

team as a last minute reserve and give him yet another picture in the magazine. Unfortunately he too, despite having an excellent season, lost both of his matches. He did, though, go down the last in both of them.

■ **Scott Ballantyne.** Came from two down with two to play to grab the half point in the final and at least by the man to avoid the whitewash as we were already four nil down at the time.

■ **Roger Willars.** The only survivor from last year's humiliation. Won his first game but was the victim of a strange virus which affected his co-ordination the night before the final. At 2.30am he totally missed his mouth with a bacardi and coke, splashed it all over the bar and had to fork out £1.90 for a replacement. Remarkably his co-ordination returned sufficiently to make it to the first tee on the final but his brave fight came to an unsatisfactory conclusion on the 16th green.

■ **Neil Maltby.** Showed his team mates what conscientious professionalism can do by staying on soft drinks and being in bed by 10 the night before the final. He was rewarded by a 100% record and being the first greenkeeper to record a win in the final. He was also a star at the dinner because being from Doncaster he was able to translate the jokes of the excellent Duggie Brown, also from "Donnie", for the rest of the team.



Above: Neil Maltby, the first greenkeeper to record a win in the final. Below: At least we won the drive and chip!

■ **Steven Heap.** Carried on the form he showed in winning individual honours in the Hayter National Final at Fairhaven to also record full points. His 5&4 victory in the semi final along with Ray Day's similar victory margin helped

ensure that the countback went in our favour.

It was a marked improvement on last year's showing when we came last but bearing in mind it required a countback to reach the final there is improvement required to reach again the giddy heights when we won it five years in a row to '89 and three times in a row to '93. It is now three years since the cup has resided at Aldwark Manor the longest barren patch we have suffered in the event's 14 year history.

The one saving grace continues to be the drive and pitch where despite a severe handicap with regards to equipment we won convincingly. Behind the wheel of a Kubota our men are as at home as Chopin at the piano or Gazza in an early bath and, complimented by skill with the wedge that they hadn't displayed earlier, they

romped home with time to spare. The Kubota Challenge is a firm feature on the calendar and although there was a change this year with Brian Hurtley now enjoying his well earned retirement, Rene Orban took up the reins and immediately displayed a genuine feel for an event which should ensure it continues well into the next millenium.

All those, greenkeepers, secretaries English Golf Union and Golf Foundation representatives who have played since 1983 will certainly hope so.

**THE ONE QUESTION I WOULD LIKE TO ASK OTHER GREENKEEPERS IS:**



"How do you combat disease?"  
**Steven Heaps, Rothey Park**





## Education Update

BY KEN RICHARDSON

# Ecology on the course: always a lot to learn

Following on from the very successful, but tiring, regional finals of the TORO/Lely/PGA European Tour Student of the Year Competition and prior to the start of this year's Regional Supervisory Management Courses, in Scotland, I attended an interesting and informative seminar on golf course ecology, at the Royal Holloway College, University of London.

### Audubon International Golf Ecology Seminar 26 September 1996

Audubon International is the major ecological organisation in the USA.

Together with the United States Golf Association, they have initiated a Cooperative Sanctuary System which aims to encourage golf courses, in the USA, to operate to an ecologically responsible management plan.

The aims are to preserve biological diversity, reduce dependence on non-renewable resources, increase natural habitat and protect water quality and quantity.

The European Golf Association Ecology Unit, which was established in January 1994, was developed in recognition of the need for a coordinated European approach to environmental issues in golf. The EGA Ecology unit aims to establish a solid factual understanding of the environmental attributes of golf courses, to develop the environmental aspects of golf courses, to encourage a higher standard of environmental performance and to provide a contribution to environmental debate in Europe. The EGA Ecology Unit hopes to realise some of these aims by initiating its Pan European Environmental Management Programme for golf courses. There will be two key components to this programme:

a. *A Green Flag Campaign for European Golf Courses.* This will be in the form of a voluntary Environmental Management Programme based on the principles of the Eco Management and Audit Scheme and the highly successful Audubon Cooperative Sanctuary Programme. Golf Clubs which engage to improve their environmental performance

and implement Best Management Practice guidelines will be eligible for recognition in the form of a green flag award.

b. *An environmental dimension to the Ryder Cup.* The focal point for the launch of the Scheme will be a major public awareness initiative in association with the Ryder Cup at Valderrama, Spain, in September 1997. The aim of the campaign will be to raise the awareness of not only golfers and all those involved in the golf industry but also to show the general public that golf courses do have a major part to play in preserving the ecological balance by using best management practices on the golf course.

### *Best Management Practice for the Protection of Natural Resources on Golf Courses*

Because of continuing public concerns, general awareness and media pressure, golf course management decisions of the future will have to be based on sound ecological practices. In many people's eyes, golf courses are gross polluters and energy wasters but those with a knowledge of turfgrasses can offer many positive aspects of golf courses and golf. Dr Charles Peacock, from North Carolina State University gave an example of how public perception can be influenced by the popular press printing ill informed and, sometimes, completely untrue information. The following information was printed in a newspaper in North Carolina:

"City sewage, industrial wastewater, farm fertilisers, livestock manure and lawn and golf course chemicals are changing the Neuse River, choking it with Nitrogen and Phosphorus".

When the reporter was questioned about research which showed that any of the river's pollution problems were associated with turfgrass or golf courses she admitted that she had made generalisations. However, the damage was done and the public linked pollution of a river to golf courses. To prevent this type of misinformation being published, golf course managers will need to be proactive and develop sound ecological management plans to ensure that the media and the general public do

not have any material to support the anti golf lobby.

How does all of this affect BIGGA, its members and all golf greenkeepers? Pressure from governments, the general public and pressure groups will not go away. The EGA Golf Ecology Unit initiative will make European Golf Courses think about and perhaps change the way that golf courses are managed. Golfers will expect to see courses managed in ecologically sound ways and golf greenkeepers will have to adapt their skills to meet these demands. BIGGA recognised the need to make greenkeepers more aware of the need for ecological management by the launch of its book *A Practical Guide to the Ecological Management of Golf Courses*, in cooperation with the Sports Turf Research Institute, inclusion of speakers at the National Education Conference and Seminar Programme giving

talks on ecological management and by commissioning a training video which will complement the aforementioned book. These initiatives should give greenkeepers the knowledge and skills needed to conduct an ecological survey, produce an ecological management plan and follow the greenkeeping practices needed to ensure that golf courses continue to be assets to the environment.

Many of the delegates at this seminar were from non-golf, environmental backgrounds and it was obvious that the message that golf courses could be great assets to the environment was not getting across. It can only be hoped that the efforts of the EGA, the Home Golf Unions, the R&A and BIGGA in educating golfers, greenkeepers and the general public make sure that the positive contribution that golf courses make to the environment is recognised.

**IF I WERE  
A WEED  
I'D BE  
TREMBLING  
IN MY  
ROOTS**



**JANUARY  
LAUNCH**

An excellent piece of farmland, a superb location and a supreme attention to detail have combined to produce a new course destined to be a winner. As Scott MacCallum discovered.

When the *Demand for Golf* was first published by the R&A in the mid '80s it was as if the starting pistol had gone in a great race for land owners and developers to produce the "biggest", the "best ever", the "most expensive" golf courses yet seen in the country.

With the benefit of hindsight the sight of white elephants and smell of burnt fingers were almost inevitable but it was easy to sympathise with those who tried and failed at the time.

To compete with the Turnberys, Wentworths, Sunningdales and St Andrews of this world with their rich history and world renown new courses used different tactics to attract members – most expensive memberships, big name designers, signature holes, five star clubhouses. All to grab publicity and entice golfers to part with their money and join.

The problem was that the investment required was colossal and the competition among new clubs huge and, ironically, no matter the quality of the final product many golfers would still rather become members of a traditional members' club given the opportunity.

Robert Knut is one of the new breed of golf developer who watched the banks and third parties move in to rescue magnificent, but failing, courses and paying a fraction of the initial cost to do so. He watched and he learned and he constructed proper business plans before beginning his own course.

Like many of its impoverished older colleagues The Oaks is an outstanding golf course and no expense has been spared. Unlike the others steps were taken to minimise the possibility of financial collapse.

For one thing The Oaks is sited just north of Selby, in Aughton, close to York, close also to the A1 and the M62.

"We counted the chimney pots," explained Robert. It's a nice way of saying that the demand was gauged before any other move was made.

"Primarily we thought we had a block of land which was suitable for a golf course with woods and some water and being situated where we are we felt that there was demand for another course around York.

"We knew we had to go to the top end of the market to compete

# From little acorns...

# THE OAKS

# has grown



The well maintained entrance

with the clubs which had big waiting lists like Fulford, Strensall, Ganton, Selby and Brough," he said.

"We were convinced that there is always a demand if the job is done right. You just have to avoid getting cold feet."

The feasibility study was so wide ranging it also took into account the fact that the Central Science Laboratories and the Ministry of Agriculture had relocated to York from London.

"We worked out how many of the staff were likely to be golfers and that they would require somewhere to play golf. It was one of the main reasons we decided to go ahead."

As it turned out the "new golfers to the area" would not have been required as around 85% of the membership has come from neighbouring golf clubs and the The Oaks opened with a full membership of over 640. They even have a waiting list. How

many new clubs could claim that within four months of opening the gates?

The course was built by Fox Plant, of Lincoln, a company which had built its own course near Birmingham about two years before.

"They were absolutely invaluable when it came to credibility for the course and when they began building they came in with a lot of equipment and it was built quickly," explained Robert.

"The grass seed was one of the biggest decisions we had to make and we looked at a number of golf clubs, visited the STRI and most of the major seed breeders at their own trial sites before making up our minds," said Robert whose family are also seed merchants.

"My brother, father and I went to Bingley twice and we each identified what we thought were the best grasses and we were unanimous each time. So in the end it was easy."

They went with Barenbrug in the end and have been impressed with the "hands-on" attention of Michel Mulder who frequently popped in on the course to check on progress of his grass.

"Being a specialist grass seed company as well as farmers ourselves made us look harder than some people would have done when it came to seed. We had contacts in the trade ourselves but the odd thing was that we had never dealt with Barenbrug," explained Robert.

The greens and greens surrounds were both sown with the same mix – 20% Lance, browntop bent; 40% Barcrown, slender creeping red fescue and 40% Baragreen, chewings fescue – to reduce the chances of invasion by poa and as an added insurance we had three men for three weeks



The team: Assistant Richard Webster, First Assistant Nigel Tate and Head Greenkeeper Philip Young

who spent all day on their hands and knees roguing poa by hand.

"We took the attitude that if we start as near perfect as we can we will try and keep on top of it. It's an on-going problem so we had a rule that every time the green was cut a dozen meadow grasses had to be rogued out.

"We decided not to go with dedicated rough mix – they went with fairway mix is 25% Bar-crown; 20% Barumba/Bargreen,

chewings fescue; 25% Barnica, chewings fescue; 20% Limousine, smooth stalked meadow grass and 10% Highland, browntop bent – because it allowed us more flexibility as to where to put the rough and meant less compaction at the sowing stage.

"We said from day one that we would reduce compaction and use light vehicles and special tyres."

"Trees have rough round them

so there is no strimming while wherever possible jobs can be mechanised.

The course was designed and constructed to be maintenance friendly and manageable by the full time green staff of three – Head Greenkeeper Philip Young, First Assistant Nigel Tate and Assistant Richard Webster.

"Philip and the team work on tees, greens, fairways and bunkers while we have someone in the summer months who does nothing but cut rough and semi rough. There is no strimming to be done. Trees all have rough up to the bottom of them while slopes are all shallow enough to allow them to be cut by ride-ons and all greens and tees can also be cut by ride-ons. We don't have steps up to tees because that creates wear areas and again the areas around them would have to hand cut."

Farm staff can also be brought in to assist in non-greenkeeping work like dyke building if the need arises.

Robert has brought some agricultural practices to the job of maintaining golf courses.

"On the measuring side greenkeepers have traditionally walked

up and down with a hand pushed fertiliser spreader and there is no proper speed monitor. The speed could vary depending up how tired he was that day. With proper speed recording equipment and doing it in a vehicle 100% accuracy can be achieved and the job done much quicker.

"My tractor man who does the spraying on the golf course can take the sprayer to within half an inch of a green and you can do a job in four hours what it would take three days to do by hand."

They use liquids on The Oaks because of the accuracy it affords and because they can tailor a liquid by adding iron, sulphur or any of the trace elements and applying them in one application.

"I am absolutely delighted with the way the golf course and the club has established itself so quickly – we already have 39 single figure handicappers in the club one of the highest number in the area," explained Robert, whose bid to become one of them, admittedly from a standing start, is hampered by an inability to find time to play on his own golf course.

You can be sure that like the famous trees which share the club's name The Oaks will be become ever more impressive with time and become an established part of the golfing community of the area.



Rough is allowed to grow around trees to ease maintenance

## EQUIPMENT INVENTORY

- Two 6x4 John Deere Gators
- One John Deere 2243 Diesel Greens Mower
- One John Deere 2243 Petrol Greens Mower (Tees and Approaches)
- One Toro Reelmaster 6500-D Fairway Mower
- One Sabo Roberine Continent 400-3D Triple Mower
- Three Ransomes Greenspro 22 Hand mowers
- One Lastec F Deck Articulator
- One Huxley TR 84 Three gang Hydraulic Reel Mower
- One Wessex Trailed Rotary Mower
- One Kubota L4200 4WD Tractor
- One Massey Ferguson 1210 4WD Tractor
- One Blec Top Dresser
- One Techneat six metre sprayer
- One Kubota LA680 Loader

# ENGINES

By Roland Taylor

**B**ecause engines are, in a majority of cases, only component part of any piece of mechanised equipment – albeit the most vital one – their importance is often taken for granted by end users.

Only when they refuse to respond to the turn of the ignition key do they come under the spotlight. The modern engine is required to produce sufficient power to drive sophisticated transmission systems, hydraulics and cutting mechanisms. Development and technology over the last two decades have produced a compact, lightweight power unit, which has a cleaner and more efficient internal combustion process than its predecessor. However, this method of producing power still has a long way to go and in the meantime will continue to be one of the top items on the environmentalists' 'clean up your act' list.

## Quality standard

It was back in the seventies that we began to see changes in engine design – these were mainly in small industrial units many of which were fitted to lawn mowers. Engine manufacturers, including some UK companies, had been supplying this market for a number of years, but it was the entry of Japanese companies that was to play a major part in it at this stage. What they bought to the marketplace was not so much innovation, but quality. Using the latest in precision manufacturing they produced extremely high quality engines. As a result, other manufacturers soon realised they had to respond quickly to the situation. This meant considerable investments in engineering processes and machine tooling. Unfortunately, as with the motor cycle industry, it heralded the demise of UK small engine manufacturers. The

over all outcome was that the quality of engines, regardless of where they were produced, greatly improved.

Throughout this period an increasing number of companies began producing outdoor-power-equipment, especially grass cutting machinery. Each new product launch set the competition the challenge to improve the concept further. Engine producers were under pressure to come up with new innovations such as increasing power output, but not weight or over-all dimensions. It is during this period we see some big changes.

## All-round better starting

Early two-stroke engines had been anathema in the industry. They were often inefficient, difficult to start and keep running for long periods. The development of equipment that required this type of engine such as chain saws, brushcutters and hedge trimmers demanded changes. Today, the modern two-stroke is found on a wide range of machinery and gives very few problems.

With the introduction of electronic ignition contact breaker points were eliminated and the engine's performance and starting was dramatically improved. On larger machines electric starters were soon fitted as a standard feature.

## Diesel development

One of the biggest changes was on the diesel engine front, especially the single cylinder air cooled units. Up to this point they had been heavy cumbersome units that were ideal where a steady output was required. On machinery, especially rotary mowers, they failed to respond fast enough when placed under load. The advent of a small fuel injector and redesigned combustion chamber, plus the use of lightweight alloys, eventually produced an engine that was on par with its petrol cousins.

Mainly because of the savings in fuel costs, increasing numbers of commercial users were demanding diesel powered machines and twin and triple cylinder water-cooled engines began appearing on larger grass cutting equipment.

Today, turbo-charged units are begin to appear as a result of manufacturers requiring high engine output without increased weight or dimensions. A super turbo-charger can be a mechanical unit or is more likely to be driven by the exhaust gases. These pass through an impeller which drives a compressor to produce the necessary pressure that is required to deliver fuel into the combustion chamber.

## Legislation calls the tune

In recent years legislation, especially in America and some countries in Europe, has meant engine designers have had to find ways of reducing exhaust emissions, noise and vibration without affecting performance. Not an easy task, as the levels of these three factors are being continually reviewed and reduced. This again has led to a host of new developments.

## Design

Most single cylinder petrol engines now have overhead valves. This configuration not only reduces the over-all size of the unit, it is said to also enable the fuel/air mixture easier access to the cylinder and likewise the burnt gases can escape faster – both contributing to a more efficient performance.

## Lower emissions

The combustion process in itself is very wasteful and a lot of unburned fuel is passed into the atmosphere in the form of gases. These are Carbon Monoxide (CO), Hydrocarbons and Nitric Oxides (HC+NO). Reductions in their levels will depend on:

1. The efficiency of the engine's carburettor system. Rich fuel mixtures mean higher levels of emissions. Unfortunately lean mixtures result in loss of power and starting problems, so designers have had to find a fine balance between the two on the latest models. Poorly maintained or worn engines will also be emitting high levels of emissions.
2. Fitting a catalytic converter will reduce emission levels. These are becoming more commonly available for smaller engines, but are at present a relatively expensive addition. There are a number of

## TIRED OF SPREADING BY HAND, OR WET MATERIAL STICKING IN A TIRED MACHINE?



*Call Ultra Plant for a demonstration of the  
Ultra Spreader.*

Used on Murrayfield, Lansdown Road, Cardiff Arms Park and most major contractors in the UK

**Tel: 01868 747582**

35b Farlough Road, Newmills, Dungannon, Co. Tyrone,  
N. Ireland BT71 4DU

AD  
REF  
473

# 1997 STYLE



Smokeless two-stroke oil only produces water vapour and carbon dioxide. The problem of noxious oil smoke is eliminated

types available and these generally resemble either a tight coil of corrugated cardboard or a sponge. The idea is to produce the biggest surface area possible in a small space. Ceramics or stainless steel forms the base structure to which is applied a coating of precious metal. Once the catalytic converter reaches operating temperature it incinerates the emissions turning them into non-polluting compounds.

3. In the case of two-stroke engines there are now available smokeless oils. These are produced from a gas. When the oil/petrol mixture is burnt in the combustion chamber it reverts back to its original form and is emitted from the engine as water vapour and carbon dioxide.

## Noise

Improved exhaust systems, sound proofing materials and engine speed have a bearing on the amount of noise produced. Many manufacturers are now putting larger power units on machines so that even when under load the engine is working well within its capacity, thus keeping the noise emitted to a minimum. Incidentally this can also affect the amount of vibration produced.

## Vibration

Synchronised balanced engine

components plus specialist mountings reduce the levels of vibration from an engine. On small power units fitted to chain saws, brushcutters and hedge trimmers, improved damping systems provide extra operator comfort.

All this mainly applies to new engines and equipment so what about all those machines that are already in operation?

There are a number of things that greenkeepers can do that will not only contribute towards a cleaner environment but help towards getting the optimum performance from their equipment with the minimum of engine downtime.

## Re-powering equipment

The engine's performance is at the heart of any piece of equipment's performance. When this starts to deteriorate it can have the following affects:

- There is marked difference in the quality of finish
- Operations take longer
- Starting becomes difficult
- Fuel and oil consumption increase
- Emission levels rise
- More pressure is placed on the machine's other components
- The risk of a breakdown at a critical time is greatly increased
- Costs rise, frustration increases and efficiency declines.

At this stage there a probably

two courses of action that could be considered. Firstly the machine is replaced with the latest version, but funds may not be available for this solution. An alternative answer is to fit a new engine, but before taking this route there are a number of factors that need to be considered.

What is the condition of the rest of the machine? It is pointless to replace the power unit then find other components, transmission drives or cutting mechanism breakdown because they too are worn out.

The unit you are considering using will need to fit into the existing engine compartment without major modifications. Engine suppliers usually have list of suitable replacement power units plus any modification kits that may be necessary.

The advantages of taking this course of action are:

1. The latest model of engine is installed with all the latest benefits. It will carry a warranty.
2. Compared with replacing the whole machine it will be a very much less costly exercise.
3. The efficiency and performance of the machine is greatly improved.
4. The chances of any downtime are reduced.

Anyone contemplating fitting a new power unit should consult their local engine supplier who

can not only advise on the best course of action but also may have some attractive packages to offer.

## Other environmentally friendly actions

- Maintaining equipment, especially engines, to the highest of standards will always pay dividends.

- Air filters. A dirty or blocked air filter makes the mixture richer and as a result exhaust emission rises dramatically. Fuel consumption rises and starting becomes difficult whilst performance deteriorates. Therefore, clean air filters regularly, especially in dry dusty conditions.

- Fuel. Use the correct two-stroke mixture. Clear up any spillage immediately as these are one of the worst forms of atmosphere pollution. Ensure carburettor settings are regularly checked as these are vital to maintaining the lowest levels of pollution possible.

- Oil. Keep at the correct level and change at the recommended intervals. Oil contributes towards keeping the engine running at the correct temperature. Use a smokeless oil in two-stroke mixtures.

- Cooling systems. On air-cooled engines the fins around the cylinder head need to be kept free of debris as blockages in these cause the engine to run hot and produce more pollution. Units, especially diesel, are generally water-cooled and the radiators on these need to be kept free of grass clippings and dirt.

- General. Regularly attend to any components that require greasing, oiling or adjustment. It reduces any strain placed on the power unit. In addition to reducing pollution, this is good machinery management and makes for a more efficient and productive operation.

The race is on to find an alternative to the internal combustion engine, but in the foreseeable future it is likely to continue as the major source of power for most professional amenity equipment. However, whilst the basic principle is unlikely to change, man's ingenuity will continue to find ways of refining the process and design of engines to meet the demands and requirements of both the legislators and users.

# Buyers' Guide

The most cost-effective way of reaching readers of *Greenkeeper International*. Simply ring Louise Lunn or James McEvoy on 01347 838581 and ask about an alphabetical category listing: the cost starts from as little as £28 per month.

## Agronomy

### B Jamieson Golf Advisors Ltd

**Bruce Jamieson** formally Director of Agronomy with the **PGA European Tour** has now formed the above company offering expert advice on:

- ◆ Golf course maintenance
- ◆ Tournament preparation and presentation
- ◆ Machinery selection
- ◆ Budgeting
- ◆ Staff recruitment
- ◆ Soil and turf analysis

Contact: **Bruce Jamieson**  
10 Ashlea, Hook, Hampshire RG27 9RQ  
Telephone 01256 760870, Fax on request

### Gordon Jaaback

consulting agronomist

offers a practical and scientific approach to problem solving and an all-round service towards cost-effective golf course construction and maintenance

Introductory visits without obligation

25 Cheviot Close Tel/Fax  
Tonbridge TN9 1NH 01732 350351

### HAVE YOU FOUND THE TINY £50 NOTES YET?

Track them down and win a REAL £50 note!  
*Get searching!*

### PSD AGRONOMY LTD

A COMPLETE AGRONOMIC CONSULTANCY SERVICE FOR THE GOLF CLUB and GREENKEEPER

- Contract Management of Extensions and New Courses
- Site Management and Problem Diagnosis on Existing Courses
- Technical Advice and Support all year round
- Soil and Turf Analysis



For further information contact:  
**David Stansfield or John Hacker**  
42 Garstang Road, Preston PR1 1NA  
Tel: (01772) 884450 Fax: 884445

### Animal Repellents

#### FAIRWAYS

DISCREET CONTROL  
CONSULTANCY  
ENVIRONMENTAL SERVICE & TRAINING

*Rabbits & Moles...  
Our problem!*

SPRINGER HOUSE - WINDMILL LANE  
KEMBLE - CIRENCESTER GLOS - GL7 6AN  
TEL: 01285 770919  
FAX: 01285 770910

### SCUTTLE® ANIMAL REPELLENT

Up to ten weeks protection from browsing by rabbits from a single, effective spray application.

For product leaflet and the name of your nearest distributor, call

01734 510033 Read the label before you buy  
Use pesticides safely  
Scuttle contains sulphuronated  
cod liver oil  
Fax: 01734 510044

© Fine Agrochemicals Ltd, Worcester WR2 5AA

## YOU'RE ONTO A WINNER WITH GREENKEEPER INTERNATIONAL

Find three tiny £50 notes – win a real one, for free!

HERE WE GO with another chance to WIN £50 with Greenkeeper International!

All you have to do is take a look at this £50 note symbol. Now look through the ads in the Buyers' Guide section and spot THREE of them – they've been reduced in size, but they're there, somewhere!

Write down the names of the three ads where the £50 notes are located and send your entries on a postcard to: **Note the Notes Competition, BIGGA, Aldwark Manor, Aldwark, Alne, York, North Yorkshire YO6 2NF**, to be received by first post Friday November 22, 1996. The first correct entry drawn after that date will win £50. *It could be YOU! Enter today – and Note the Notes!*

Judges' decision is final. Not open to BIGGA staff.

£50

★ **Steven Kitchen, First Assistant at Elland Golf Club, Halifax, was the lucky winner of last month's competition.**

**A crisp £50 is on its way. Don't despair – YOU could be the next winner! Get searching straight away!**

### Amenity Spraying

#### WEED FREE BRACKNELL

PROFESSIONAL PESTICIDE APPLICATION AND ASSOCIATED TURF SERVICES  
**FOR ALL YOUR SPRAYING REQUIREMENTS**

Tel: 07000 481011  
Fax: 07000 481022  
Mobile: 0850 300104

Unit 12 Lindenhill Road, Bracknell, Berkshire RG42 1UT.

### Arboriculture



- Tree Spade Hire
  - Semi Mature Trees supplied
  - Mulches supplied
- Ring for colour brochures

Iver, Bucks, SLO 9LA  
Tel 01753 652022  
Fax 01753 653007

### Architects

#### BRITISH INSTITUTE OF GOLF COURSE ARCHITECTS

Representing the leading European Practices in golf course design, working worldwide and offering professional services from initial site appraisals and feasibilities, conceptual designs, to detailed architecture, specifications and project management and construction design.

Merrist Wood House, Worplesdon, Guildford, Surrey GU3 3PE  
Tel: 01483 236035 Fax: 01483 236037



### JONATHAN GAUNT

B.A. (Hons.) Dip L.A.  
GOLF COURSE ARCHITECT

From feasibility studies to complete design projects including contract supervision  
44 Stanmore Road  
London E11 3BU

TEL: 0181 532 9181 FAX: 0181 532 9553  
Associate of the British Institute of Golf Course Architects

### David Hemstock Associates

Consultants on:

- Golf Course upgrading
- New Course development
- Specialists in irrigation, drainage and contour surveys

Suite 4d, East Mill, Bridgefoot, Belper, Derbyshire DE56 1XU  
Tel/Fax: 01159 499080  
Mobile: 0850 744957

### Artificial Grass

UNIT 25, COWLING MILL  
COWLING BROW  
CHORLEY  
LANCASHIRE PR6 0QG  
Tel: 01257 269983/269069  
Fax: 01257 261064

- VERDE TEE FRAME  
Steel platform, woven grass top.
  - VERDE WINTER TEE  
Generous size, self-install kit.
  - VERDE DRIVING MATS  
Top quality - Long Life - Best Prices.
  - ARTIFICIAL GRASSES
  - DRIVING BAYS AND NETS  
For club and home use.
- TWENTY YEARS EXPERIENCE SUPPLYING THE BEST SURFACES AT COMPETITIVE PRICES.  
Please call for samples & information



Working House  
Basingstoke  
Hants RG23 8PY  
Tel: 01256 811014

- COURSE CONSTRUCTION ●
- SYNTHETIC GRASS TEES ●
- WINTER GREENS ●
- ADVENTURE GOLF ●

### Bark



Iver, Bucks, SLO 9LA  
Tel 01753 652022  
Fax 01753 653007

### Bridges

TOTAL TIMBER ENGINEERING  
**H. L. D. LTD**

BRIDGES  
Pedestrian and Vehicular  
REVETMENTS  
SHEET PILING  
SHELTERS

HICKSON LEISURE DEVELOPMENTS  
THE SHIPYARD, GAINSBOROUGH,  
LINCOLNSHIRE DN21 1NG  
telephone (01427) 611800 fax (01427) 612867

### Buildings

**ELWELL THE GREENKEEPER'S CHOICE**

Secure sectional steel buildings in various sizes.  
● Machinery & equipment storage  
● Fertilizer, weedkiller & seed storage  
● Workshops ● Tool sheds  
● Trolley stores  
● Temporary fencing & secure enclosures

For FREE design service, quotation, brochures and technical advice PHONE NOW  
**0121 553 5723 (24hrs)**  
Elwell Buildings Ltd, 204 Oldbury Road, West Bromwich, West Midlands B70 9DE. Fax: 0121 580 1172

### Greenkeepers' Stores Driving Ranges Club Houses

- ◆ Machinery Storage
  - ◆ Maintenance Workshops
  - ◆ Fertiliser and Weedkiller Storage
  - ◆ Offices and Staff Mess Rooms
- FREE initial designs and costings

**Ivan J Cooper Ltd**  
Steel Framed Buildings  
Moorside Works, Cauldon Lowe,  
Stoke-on-Trent ST10 3ET  
Tel: 01538 702282 Fax: 01538 702662



## Cockleshells

### BAILEY'S OF NORFOLK

Washed Cockleshells  
Delivered Nationwide, Competitive Prices  
Brick Kiln Road, Hevingham, Norwich,  
Norfolk NR10 5NL Tel: 01603 754607  
Mobile: 0850 353603

## WASHED COCKLESHELLS

Delivered Nationwide  
Britain's No. 1 Supplier



PHOENIX  
PATHWAYS

Tel: 01229 468001  
Fax: 01229 468002

## Chemical Disposal

### CHEMICAL & EMPTY CONTAINER DISPOSAL A PROBLEM?

ENVIROGREEN offer a Specialist  
Pesticide Disposal Service for both  
full and empty Container disposal.

ENVIROGREEN Limited  
Maxwell Hart Business Centre  
PO Box 298, Lightwater,  
Surrey GU18 5HH  
Registration No: BRK/060299  
Tel: 0345 125398

Tell the industry of your products  
and services, through an  
advertisement in greenkeeping's  
top magazine GREENKEEPER  
INTERNATIONAL

## GRUNDON

Grundon can provide safe  
disposal for pesticides and  
herbicides and all chemical  
wastes. For more information  
on how Grundon can help  
with your "Duty of Care"  
telephone 01491 834311

## Construction

### CONTOUR GOLF LIMITED

International Contractors and  
Construction Consultants  
Construction of new courses and  
remodelling of existing courses  
Tel: 01327 79464  
Mobile: 0385 272935  
105 The Severn, Daventry, Northants NN11 4QS

## BAGCC

### CONTACT THE PROFESSIONALS

Jonathan Franks, Secretary,  
BAGCC, 37 Five Mile Drive,  
Wolvercote, Oxford OX2 8HT  
Tel/Fax: (01865) 516927

A New Company...For Your Golf Course

## Renovations

Offering design and build remodels  
- Experienced Designers  
- Quality Construction  
- Fixed Price

Philip House, Stamford Road, Bowdon,  
Altrincham, Cheshire, WA14 2JU  
Tel: 0161 929 8600  
Fax: 0161 929 5060



Artington  
GOLF LTD  
28 PUMP LANE  
HORNEDEAN  
WATERLOOVILLE  
HAMPSHIRE  
PO8 9TS ENGLAND  
T/F: (01705) 592390

Update Your Existing Course By:  
TEE EXTENSIONS  
GREEN RE-MODELLING  
BUNKER ALTERATIONS  
DRAINAGE  
also NEW COURSE  
CONSTRUCTION

## RD JONES & SONS

Golf Course Construction Ltd

### DESIGN, CONSTRUCTION, LANDSCAPING AND REFURBISHMENT SPECIALISTS

Cae Coch Farm, Whitford, Clwyd,  
North Wales CH8 9EP  
Tel: 01745 561761  
Fax: 01745 561988



## G.O.L.F LANDSCAPES LIMITED

ASHWELLS ROAD, BENTLEY  
BRENTWOOD, ESSEX CM15 9SR

TEL: (01277) 373720  
FAX: (01277) 374834



## C.J. Collins Construction

Golf Course Contractors

Burgess Hill, West Sussex  
Tel: 01444 242993  
Fax: 01444 247318



John Greasley  
Specialist Contractors  
for the  
Construction  
of New  
Golf Courses

J D GREASLEY LIMITED  
"Ashfield House" 1152 Melton Road,  
Syston, Leicester LE7 2HB  
Telephone 0116 269 6766  
Fax 0116 269 6866



## Greenline Golf Course Construction Co.

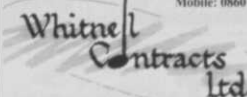
### CONSTRUCTION AND REFURBISHMENT CONTRACTOR

For all your design and  
construction requirements

47A Iona Street, Edinburgh EH6 8SR  
Tel: 0131 555 1799 Fax: 0131 555 3271

## Whitnell Contracts Ltd Golf Course Contractors

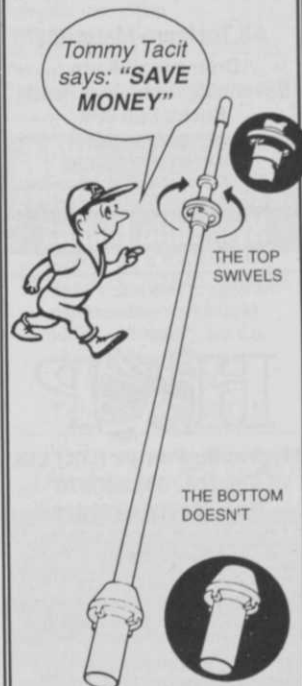
Woodlands, Ellis Road  
Boxted, Colchester  
Essex CO4 5RN  
Tel: (01206) 272834  
Fax: (01206) 272104  
Mobile: 0860 421074



## Course Accessories

## TACIT

The best for less!



Lockon to Tacit's new Flagstick  
with Anti-wear Ferrule.

When used in conjunction with  
Tacit's quality Holecups, it will  
prolong the life of the Flagsticks  
and so keep them upright  
longer.

For further details contact:

## TACIT

Golf Course Equipment Manufacturers

Tel: 01788 568818  
Fax: 01788 537485

## GREENKEEPER

International  
Greenkeeping's premier  
publication

## BOYD GOLF COURSE ACCESSORIES

IRELAND'S LEADING GOLF  
COURSE EQUIPMENT &  
ACCESSORY MANUFACTURER

FOR MORE INFORMATION  
TEL: (01247) 271163  
FAX: (01247) 471136

## Drainage



\* Vertidrain \* Top-dressing  
\* Land Drainage \* Overseeding  
\* All types of construction

(01734) 795454

Winnersh, Reading, Berkshire



Golf Courses and  
Sportsfields  
\* Drainage  
\* Construction  
\* Water Mains  
\* Fin Drains  
\* Approved sand,  
gravel and pipe  
supplied

Sunnyside, Blairadam, by Kelty,  
Fife KY4 0HY  
Tel: (01383) 830217  
Fax: (01383) 831771

## SLEATH & SON SPORTSTURF DRAINAGE

Full range of modern equipment providing  
UK and European service  
Contact Geoff Sleath  
Tel: (01709) 862109 Fax: (01709) 862075

## AGRIPOWER LTD.

Construction  
Drainage  
Stone Picking  
Verti-Draining

Tel: (01494) 866776

## Driving Range Equipment

## RANGE SERVANT

UK Ltd

### GOLF RANGE EQUIPMENT

Ball Dispensers, Collectors  
and Washers. Play Off Mats  
and Winter Tee Mats

### AUTOMATIC TEE-UP UNIT

Office Phone/Fax 01442 834242  
Mobile 0585 468624  
4 Arden Close, Bovingdon HP3 0QS

## Environmental Products

For natural and environmental solutions to get you growing, contact:

# farmura

Stone Hill, Egerton, Ashford, Kent TN27 9DU

Tel: 01233 756241 Fax: 01233 756419

## Fountains

## Fountains

For all your floating fountain and aerator requirements, contact S.G.I. Sales. Ask for details of our large range for functional and decorative displays.

### S.G.I. Sales

6 Stuart Road, Market Harborough, Leics LE16 9PQ

Tel: 01858 463153

Fax: 01858 410085



BTME Hotline 01347 838581

## Golf Course Supplies

# Martins

of course

## OUR SUCCESS IS GROWING

- For ★ Oakmoor Bunker Sand  
★ Par-Link Red Pathway Gravel  
★ Top Dressing – loose and bagged  
★ Fendress Top Dressing and HMC



Products

Rootzones

- ★ USGA
- ★ Golf
- ★ Sportpitch

also ★ Sharpes Designer  
☐ Range Grass Seeds

# Martin Brothers UK

Tel: 01625 614121

Fax: 01625 618282

## Grass Cutting Equipment

SAVE MONEY!



EX DEMONSTRATION AND TOP QUALITY REMANUFACTURED GOLF COURSE MACHINERY AVAILABLE FROM STOCK

RANSOMES TORO JACOBSEN  
RYAN HAYTER BEAVER  
sisis CUSHMAN ROYER  
VERTI-DRAIN  
Loyds ISEKI KUBOTA

UK & EXPORT DELIVERY ARRANGED  
Phone for a full catalogue NOW  
GREENSWARD ENG. CO. Manor Farm,  
Otley Rd, Adel, Leeds LS16 7AL. Tel: 0113 267 6000

## Grass Seed

Turf Management Systems

for  
PRE-GERMINATED GRASS SEED  
"LIQUID SOD" SPRAY ON GRASS  
TOP DRESSINGS  
GRASS SEED  
FERTILISERS  
HERBICIDES  
HORTICULTURAL PRODUCTS  
and  
All Turfcare Materials  
Dromenagh Farm,  
Sevenhills Road, Iver Heath,  
Bucks SL0 0PA  
Tel: 01895 834411  
Fax: 01895 834892

## Hydraulic Pumps

All types of Hydraulic Pumps & Motors Reconditioned and Supplied



Hydraulic Pumps (UK) Ltd

Tel: (01709) 360370

Fax: (01709) 372913

Collect, Strip, Assess & Quote free of charge

## Irrigation

Butyl Products Ltd for waterfeature linings,



reservoirs and storage tanks

Butyl Products Limited

11 Radford Crescent, Billericay, Essex  
Tel: 01277 653281  
Fax: 01277 657921

MIST IRRIGATION SYSTEM CONTROLS LTD

(Inc. MACPENNY-CAMERON IRRIGATION)

## IRRIGATION

Suppliers of irrigation equipment to golf courses, bowling greens, landscapes, horticulture. SPARES - REPAIRS - SERVICE

MISC LTD

Unit 18, Hightown Industrial Estate, Ringwood, Hants BH24 1ND  
Tel: (01425) 474614 Fax: (01425) 471296

## NORTH STAFFS IRRIGATION

DESIGN AND INSTALLATION BY AN INDEPENDENT, FAMILY COMPANY

Tel: 01785 812706 or  
Tel/Fax: 01782 395734

## Watermation

Manufacturers, designers and installers of  
**GOLF COURSE IRRIGATION FOR 25 YEARS**

Tongham Road, Aldershot, Hants GU12 4AA

Tel: 01252 336838

Fax: 01252 336808

## IC IRRIGATION CONTROL

DESIGN, SUPPLY, INSTALL, SERVICE

INSTALLING THE WORLD'S FINEST IRRIGATION PRODUCTS

Area dealers for:

Hunter\* and Weathermatic.

WINSFORD CHESHIRE

Tel: 01606 558 927

Fax: 01606 862 882

## MIDLAND IRRIGATION

AN INDEPENDENT IRRIGATION COMPANY

2 Fairedene Way, Great Barr, Birmingham B43 5JS

Tel: 0121 358 1246

Fax: 0121 357 6789

DESIGN • SUPPLY  
INSTALLATION • SERVICE

Full member of BTLIA

## I.L.S. Irrigation Systems & Equipment

For all your irrigation requirements, whether a new installation or system refurbishment – contact us now for a free survey, design and quotation.

I.L.S. Irrigation Systems & Equipment, Oundle Road, Luton, Peterborough PE8 5ND  
Tel/Fax: 01832 272450

## HIGH RELIABILITY DECODERS

Equivalent to Watermation, CIC, Wright Rain, PrimeTime, and Robydomo

- ◆ No switches, more reliable
- ◆ 3 year warranty
- ◆ Multi-outputs available
- ◆ Low cost address programmer
- ◆ Competitively priced

TONICK WATERING  
Tel: 01903 262393 Fax: 01903 694500

Associate Member of BTLIA

## Hunter®

The Irrigation Innovators

Full range including Valve-in-Head from  
**S.G.I. Sales**

6 Stuart Road, Market Harborough, Leics LE16 9PQ

Tel: 01858 463153

Fax: 01858 410085

## A Nationwide Irrigation Service

A well designed and installed irrigation system is a vital component to a successful project.

OCMIS specialise in irrigation systems for sportsground, recreational, amenity and landscape areas.

We offer comprehensive expert consultations, designs, quotations, manufacture, supply, installation and service.

OCMIS are stockists of an extensive range of quality irrigation equipment for every requirement.

Regional offices throughout the UK  
For further information contact  
Head Office on 01460 241939

# OCMIS

Buckner Hunter RAIN-BIRD

Design and service you can trust

Installation Sales & Service  
N.E. England, Yorkshire,  
N. Lincs, N. Derbys, N. & S. Humberside  
Contact: EB & L Simms  
Tel: (01765) 602175 Fax: (01765) 603488  
Par 4, Unit 18, Camphill Close,  
Dallamires Lane, Ripon,  
N Yorks HG4 1TT

BTME Hotline 01347 838581

## Automatic Watering Systems for Sports and Leisure Grounds

• Designed • Supplied • Installed

### GLEN HEAT & IRRIGATION

Pinchbeck, Spalding, Lincs.  
Tel: (01775) 722327  
Fax: (01775) 725444

### T. & G. TURF IRRIGATION SERVICES

38 Halfpenny Lane, Knaresborough, North Yorkshire HG5 0NS  
Tel & Fax: (01423) 864963  
Full member of B.T.L.I.A.

### BRITISH OVERHEAD IRRIGATION LIMITED

Tel: (01932) 788301  
Fax: (01932) 780437

### INDEPENDENT CONTRACTORS FOR GOLF COURSE IRRIGATION SYSTEMS, UPDATES AND COMPLETE PROJECTS

## BEST BUY B.O.I.L.

EXPERIENCE - EXPERTISE  
CARE - SERVICE  
since 1923  
Founder Member BTLIA

East Midlands Area  
Installation, Sales and Service  
Everton, Doncaster, DN10 5DR  
Tel: (01777) 817410

## Irrigation Pumps

### GRUNDFOS



- Borehole pumps for water supply
- Pressure boosting pumps for irrigation
- Heating & Hot Water Service pumps for clubhouses

For details of distributors and installers throughout the UK freephone Grundfos on 0500 002621

## Lake Construction/Liners



### GT GROUP LEAST COST WATERPROOFING OF LAKES AND RESERVOIRS

- using lining membranes and associated geosynthetic materials.

◆ Comprehensive service available to owners/architects/consultants and contractors. GT GROUP, Nags Corner, Wiston Road, Nayland, COLCHESTER CO6 4LT

For technical and sales enquiries  
Tel: (01206) 262676  
Fax: (01206) 262998



BTME Hotline 01347 838581

## Liquid Fertiliser



### OUTSTANDING RANGE OF AMENITY PRODUCTS

LIQUID BLOOD AND BONE  
Plant growth supplement  
CRN Range - unique controlled release Nitrogen products.  
★ pH FERTILIZER - pH Control ★ STANDARD LIQUID FERT RANGE ★ IRON PRODUCTS RANGE ★ SULPHUR PRODUCTS RANGE ★ ORGANIC PRODUCT RANGE ★ TURF WETTERS

R&D Formulations, Kettlethorpe, Lincoln  
Tel: 01522 704848 Fax: 01522 704748

## Mower Spares

### MOWER ACCESSORIES LTD

Manufacturers of high quality lawnmower blades and cylinders. Suppliers of spares and accessories.

65 Forncett Street  
Sheffield S4

Tel: 0114 276 5825  
Fax: 0114 276 5855

## pH Control



### Water Quality Control

pH and chlorine control and dosing systems for your irrigation water, for improved turf quality.

Nationwide installation and commissioning service and advice. Contact Brian Sykes

STRANCO LTD.

17 Apex Park, Hailsham, East Sussex.  
Tel 01323 441744 Fax 01323 441611

## Greenturf Systems

for pH Control using  
"PHAIRWAY" solution  
Contact:

### S.G.I. Sales

6 Stuart Road,  
Market Harborough,  
Leics LE16 9PQ  
Tel: 01858 463153  
Fax: 01858 410085

FREE SOIL AND WATER TESTING

## Peat

### Superscreened Sphagnum Peat for Golf Course Construction and Maintenance

- \* Conforms to BS4156
- \* Weed and Pathogen Free
- \* Provides quick and even establishment
- \* Excellent water retention during dry periods
- \* Reduced risk of dry patch
- \* Consistent quality for easy handling and mixing
- \* Quick and reliable deliveries nationwide

Finnfibre Horticulture Ltd  
Gerrard Business Centre, Worthing Road,  
East Preston, West Sussex BN16 1AW  
Tel: 01903 859555 Fax: 01903 859666

## Railway Sleepers

### A1 CONSTRUCTION GRADE SLEEPERS

Any quantity, delivered anywhere  
also

### COCKLESHELL PATH MEDIA

Bulk loads, discounted prices

### FINETURF PRODUCTS 01375 361606

### RAILWAY SLEEPERS 8'6" x 10" x 5"

### CROSSING TIMBERS 12" x 6" up to 16' long Price quoted for number required

Tel (01233) 625121 or 620277

### Faggs Fleet

Whitfield Road,  
Ashford, Kent



### RAILWAY SLEEPERS

For keen prices contact  
Mr David Robinson  
Tel/Fax 0161 456 7109  
at 'STRIKE TOP TURF'

## Root Zone

### FEN TURF DRESSINGS LTD

Specialist Manufacturer and Supplier  
(for over 20 years) of Rootzones and Top  
Dressings - to all specifications including  
USGA. Supplied nationwide.  
Please phone for quotation.  
Tel: (01858) 464346/433003  
Fax: (01858) 434734

### PHOENIX SPORTSTURF SERVICES

### QUALITY ROOTZONES USGA Spec available

Tel: 01229 468001 Fax: 01229 468002

## Sand/Silica Sand

### GRUNDON

### NOW SPREADING IN YOUR AREA

Top Dressing  
Bunker Sand  
Root Zone  
Tees Dressing  
All Aggregates  
Path Gravels  
Cockleshell

NEW HOTLINE NUMBER:  
Contact Gordon  
on 01367 244078



Sands  
Root Zones  
Top Dressing

Lime Free Dried and Washed Sands.  
USGA, Golf, Sports Pitch Root Zones  
Top grade Top Dressings  
Nationwide availability from local sites  
Hepworth Minerals and Chemicals Ltd  
Brookside Hall  
Sandbach  
Cheshire, CW11 0TR  
Sales orders:  
Tel 01270 752 700 Fax 01270 752 701  
General Enquiries:  
Tel 01270 752 752 Fax 01270 752 753

### ARC BUCKLAND Southern INDUSTRIAL MINERALS

### Sand and Silica Company COMPLETE RANGE OF HORTICULTURAL SANDS

Contact Lynda Jordan  
Buckland Sand & Silica Co.  
Reigate Heath, Reigate,  
Surrey RH2 9RG

Tel: (01737) 240151

### Drinkwater Sabey Ltd

(EBENEZER MEARS)

KINGSLEY FINE WASHED SAND  
for Tees · Greens · Bunkers  
and drainage sands and shingles

Wintersells Road, Byfleet, KT14 7AZ

01932 345616



## Seats

### Gloster FINE TEAK FURNITURE



Seats, tables, chairs,  
benches,  
planters and lit-  
terbins made  
from plantation  
grown teak. Listed in  
the Good Wood Guide.  
Send for brochure

D-Scan (UK) Ltd Concorde Road,  
Patchway, Bristol BS12 5TB  
Tel: 0117 931 5335 Fax: 0117 931 5334

## Sports Netting

### SPORTS NETTING



- PERIMETER NETTING
- TARGET NETS
- ANTI BALL PLUGGING
- GRASS GERMINATION
- ANTI DAZZLE NETTING
- PADDED/NET BAY DIVIDERS
- CHIPPING NET
- PRACTICE NETS
- 'EPIC' TARGET GREEN
- BALLSTOP FENCING

TEL: 01179 669684

## Tee Mats

### PRO-TEE ALL-WEATHER GOLF MATS

Constructed using a robust and durable  
glass reinforced cement base and three  
individually replaceable turf sections -  
which have 12mm rubber shock pad  
backings - the PRO-TEE all-weather golf  
mats are ideal for both course and  
practice ground use.



Take a closer look at  
these features:

- Natural feel all-weather surface
- Available in two sizes
- Protects the natural grass
- Suitable for right or left handed players
- Weatherproof, solid & stable
- Peg retention system that will not clog up with broken tees
- Special levelling devices

### LINKS LEISURE

Find out more by  
contacting Links Leisure  
today

LINKS LEISURE  
LIMITED  
Unit 22,  
Civic Industrial Park,  
Whitchurch, Shropshire  
SY13 1YJ  
Tel: 01948 663032  
Fax: 01948 666381

### TUFTURF ARTIFICIAL GRASS TEE MATS, CARRYMATS AND PUTTING SURFACES FROM CARPETITION LTD

14 Kaffir Road, Edgerton,  
Huddersfield HD2 2AN

Tel: (01484) 428777 Fax: (01484) 423251



- Suppliers of the Dunlop Winter Tee & Practice Mat
- Golf Course Furniture
- Driving Range & Practice Ground Equipment
- Flooring & Pathways

Tel: 01704 571271  
Fax: 01704 571272

## Top Dressings

### All Seasons Dressings

for CONSTRUCTION  
OF TEES, GREENS &  
BUNKERS

References available

119 London Road,  
Kingston, Surrey KT2 6NH  
Tel: 0181 546 3960

## Top Dressings

# HADLEY

- ♦ ROOTZONES ♦
- ♦ DIVOT MIXES ♦
- ♦ TOP-DRESSINGS ♦
- ♦ SCREENED SOILS ♦
- ♦ DRAINAGE & SUB-BASE MATERIALS ♦

Alan Hadley Limited, Fenton House,  
102 Grazeley Road, Three Mile Cross,  
Reading, Berkshire RG7 1BJ

Tel: 0118 988 3266  
Fax: 0118 988 4538

**STERILISED TOP DRESSINGS** from £18 per ton



**PHOENIX SPORTSTURF**

Tel: 01229 468001 Fax: 01229 468002

## Tree Planting

**EAMONN WALL & CO**

WOODLAND DESIGN & MANAGEMENT

● For everything to do with trees on golf courses, from planning to felling, expert advice.

● Large planting grants available.

OFFICES AT DOLLAR, DURHAM AND READING  
Tel: 01259 743212



**Eastcote Nurseries (Solihull) Ltd**

- ★ Tree Spade hire
- ★ Tree moving
- ★ Semi mature trees

Nationwide service

Hampton Road, Barston, Solihull,  
West Midlands B92 0JL

Tel: 01675 442033  
Fax: 01675 442324

## Turf



**Jubilee Seeds & Turf**

QUALITY CULTIVATED TURF FOR ALL GOLF COURSE AND OTHER APPLICATIONS:

Greens, Tees, Surrounds, Bunkers, etc

TEL/FAX 01797 320536

Jubilee Villa, 3 Ness Road,  
Lydd, Kent TN29 9DP

# Q Lawns

*Growers of Quality Turf*

- ★ Uniquely cultivated on fine dark soils
- ★ Next day deliveries
- ★ Quality assured company ISO 9002

British Field Products Limited  
Corkway Drive, Hockwold,  
Thetford, Norfolk IP26 4JR  
Office: 01842 828266 Fax: 01842 827911

**IOA** **OTPI**  
**SOVEREIGN TURF**

Growers of consistent quality turf in either big or small rolls for landscapers, amenity users and golf courses

Tel: 01728 688 984  
Fax: 01728 688 949

Fir Tree Farm, Blaxhall, Woodbridge,  
Suffolk IP12 2DX

## Tip Top Turf.

Seed grown turf available in one sq yd or large 25 sq yd rolls with laying machines or service available.

Tel: 01908 270701 • Fax: 01908 374889

# INTURF

GROWERS AND SUPPLIERS OF HIGH QUALITY CULTIVATED TURF FOR ALL APPLICATIONS AND APPOINTED OFFICIAL TURF PRODUCERS TO WEMBLEY STADIUM

Please contact Head Office for more information:

**THE INTURF GROUP**

Regent Street • Pocklington • York YO4 2QN  
Telephone 01759 304101 • Fax 01759 305229



*For a finer class of grass...*

The independent supplier with a wide product range of turf for all applications.

Grasslands Turf Farm  
Ashford Road, New Romney,  
Kent TN28 8TH. Tel: (01797)  
367130 • Fax: (01797) 367929



## Turf Dressings



**BAILEY'S OF NORFOLK**  
supply

PROFESSIONAL TURF DRESSINGS FOR THE PROFESSION

- ★ GOLF TURF DRESSINGS
- ★ SAND ★ SCREENED TOP SOIL

Deliveries nationwide

**BAILEY'S OF NORFOLK**  
Brick Kiln Road, Hevingham, Norwich,  
Norfolk NR10 5NL Tel: 01603 754607  
Mobile: 0850 353603

# BL BOUGHTON LOAM LTD.

For

**TURF DRESSINGS  
ROOT ZONE MIXES  
SCREENED TOP SOILS  
BUNKER SANDS  
HORTICULTURAL COMPOSTS**

Telford Way, Kettering,  
Northants

Tel: 01536 510515

**FEN TURF DRESSINGS LTD**

for Fendress Top Dressing

- Fendress Superfine
- Economy Dressing
- Rootzone Mixes
- Screened Fensoil • Screened Peat
- Screened Loam • Kiln Dried Sand
- Bunker Sands



Tel: (01858) 464346/433003  
Fax: (01858) 434734



**BTME Hotline 01347 838581**

# Rufford

TOP-DRESS SUPPLIES

Britain's No. 1 for  
QUALITY • SERVICE •  
SHEER VALUE FOR MONEY

Fairway House, South Stage, Broadway,  
Salford Quays, Manchester M5 2UQ  
Tel: 0161 877 8550 Fax: 0161 877 8554

## Tyres

**FLOTATION TURF TYRES**

- ★ Wide Flat Treads ★
- ★ Custom Made Wheels ★
- ★ New and Used available ★

**ROSCO TYRE AND WHEEL LTD**  
Graveyard Lane, Ormskirk, Lancs  
Tel: 01695 421100 Fax: 01695 424265

## Vertidrain Hire

**SEWARD TURF MAINTENANCE**

Vertidrain 2.5 and 1.5 metre  
Gravel Banding over seeding  
Hollow Tining Fairway Grooming  
and Top Dressing

Phone York: 01904 765949  
Freephone: 0500 432120

**MIDLAND TURF AERATING SERVICE**

- ★ Verti-Draining
- ★ Hollow Coring with Ryan GA30
- ★ Tractor Hire
- ★ Competitive Prices
- ★ Professional nationwide service.

Tel/Fax: 01922 417567

Mobile: 0973 478516

Charles Frost

*Richard Campey*

VERTIDRAIN 1.5mtr and 2.5mtr Hire  
Coremaster & Core Harvester.  
Shattermaster. Charterhouse Vreedo &  
Vertiseed Overseeders, Scarifiers and  
Topdressers. Large selection of Tractors,  
Mowers and Sports Turf Maintenance  
Machinery for sale.

For further details contact:

RJ & J Campey  
Marton, Macclesfield  
Tel: 01260 224568  
Fax: 01260 224791

*Alder Root Golf Club*



**VERTIDRAINING**

Competitive rates and prompt  
service offered throughout the  
North West

For details contact:

Ernie Lander on 01925 291919  
or 0831 448817

**PETER MANNINGTON**



Specialist Verti-Drain Contractor for the South  
For greens, tees, fairways and sportsgrounds  
Experienced operator, competitive prices and reliable service

Phone Peter on 01580 200205  
or Mobile 0850 612061

Sheepwash Farm, Church Street, Ticehurst,  
Wadhurst, East Sussex TN5 7DL

**PARKER HART**  
CONTRACTING SPECIALISTS

VERTI-DRAINING • HOLLOW CORING  
TOP DRESSING • SEEDING  
SAND SLITTING • SAND BANDING  
DRAINAGE

Qualified and experienced staff  
Plus all your sports turf, amenity and  
horticultural supplies

Contact Anne Wicks (Contracts  
Manager) Tel: 0181 337 7791  
Fax: 0181 330 7392

**ROSS OLIVER**

SPORTS GROUND CONSTRUCTION  
AND MAINTENANCE

- VERTI-DRAIN for Greens and Sportsgrounds
- STONE PICKING ● RYAN HOLLOW TYNER
- SAND SPREADERS ● DIRECT DRILLS

Greystones, Trebudamon, Cornwall TR8 4LP  
Tel: (01841) 540222 Fax: (01637) 881057

# WORTH DRAINING

VERTIDRAINING and  
HOLLOW CORING HIRE  
with the RYAN G.A. 30

Contact Peter Bloodworth  
**WORTH DRAINING**  
Cornbecks Farm, Imham, Grantham,  
Lincolnshire. Tel/Fax: 01476 550266

## Weed Control



complete weed control

**GETTING TO THE ROOT OF THE PROBLEM!**

The UK's leading specialist spray contractor  
with local service centres nationwide.

**01608 644044**

## Wood Chips

**SCREENED WOOD CHIPS**  
(95% Hardwood)

Delivered or Collected  
Price on application

Contact:

**HARRY ADCOCK & SONS**  
SAW MILLS, CORBY GLEN,  
GRANTHAM, LINCOLNSHIRE

Tel: 01476 550231  
Fax: 01476 550363

## Workshop Equipment

**NEARLY ROTARY BLADE GRINDER**

The model 400 Rotary  
Blade Grinder provides  
the latest in rotary blade  
sharpening capability,  
with economy, accuracy  
and convenience at a  
minimum of cost. (S)



Ring Risboro' Turf on 01844 274127  
or fax 01844 274191

for your nearest  
stockist

If you haven't found the ads with the  
3 symbols in yet,  
TRY AGAIN:  
IT COULD BE WORTH  
**£50 TO YOU!**

# Classified

## Machinery For Sale

### Richard Campsey MACHINERY FOR SALE

Jacobsen 3910 Fairway Mower 2WD ..£14,450  
 Jacobsen ST511 Fairway Mower c/w 5 blade  
 and 10 blade units.....£18,950  
 John Deere 755 c/w Cab .....£5,950  
 John Deere 855 c/w Cab, low hours .....£8,750  
 Kawasaki Mule 1000.....£2,950  
 Toro 3000D Greensmower, choice of four, fully  
 serviced.....from £7,500  
 Toro 216D 1995, 3WD, low hours.....£8,950  
 Large selection of tractors, grasscutting  
 and turf maintenance equipment available,  
 telephone or fax for details

Tel: 01260 224568  
 Fax: 01260 224791

### FOR SALE TORO HYDROJECT

620 hours  
 Dealer Serviced  
 Excellent Condition  
**£9250 +VAT**

Day: 01159 205640  
 Eve: 01623 490365

### Wanted

### HIPER GOLF WANTED

John Deere Turf Equipment  
 Verti-Drains, Verti-Seeds, Pedestrians  
 Ryan: GA24, GA30, Sod Cutter,  
 Renovaire, Mataway, Overseeder  
 Turfco: Mete-R-Matic  
**ANY CONDITION CONSIDERED**  
 Tel: Int. Code: +34 52 81 23 35  
 Fax: Int. Code: +34 52 81 78 73  
 (SPAIN)

### Servicing

### WINTER SERVICING and SHARPENING

★ Free appraisals and estimates  
 ★ Free collection and delivery  
 (within 75 miles of Milton Keynes)  
 USED MACHINERY - SPARE PARTS  
 - REFURBS + MODS A SPECIALITY  
**ADVANCED TURF MACHINERY**  
 Tel: Milton Keynes (01908) 281660

### Mower Spares

## DECEMBER SPECIAL OFFER



Real savings with Ransomes Real Parts  
 on Chains.

**CONTACT YOUR LOCAL  
DEALER FOR DETAILS**

### G E Adamson Grass Machinery

Ryan Greensaire 24 hollow corer. . . . £3250  
 Ransomes Super 51 Certes . . . . . £1150  
 Ransomes 180D diesel triple-fixed  
 or floating heads . . . . . £2950  
 Ransomes TM80 slitter - new  
 7" blades or spoons . . . . . £875  
 Sisis A04/S slitter c/w rear rollers. . . . £950  
 Sisis FTA/4 fine aerator - hollow tines . £875  
 Cushman topdresser . . . . . (choice) £975

Tel/Fax: 01995 640180

### MACHINERY FOR SALE

**BIG JOHN 32-3P  
TREE SPADE  
TWOSE TURF  
CONDITIONER  
MODUS T PRESSURE  
FRAME WITH  
TERRACORE AND  
AERATOR**

All good condition

**East Dorset Golf Club**

Tel: 01929 472244  
 Fax: 01929 471294

### Purdys Grass Machinery

JACOBSEN DISTRIBUTORS  
 Largest selection of professional  
 used and reconditioned grass  
 machinery in the Midlands

Toro Greensmaster 3000D. Superb  
 condition: £8,750  
 Jacobsen Tri-king Diesel, 3WD,  
 superb condition from £4,950  
 Jacobsen Greensking, power steer,  
 new Kubota diesel engine: £8,995  
 Ransomes 5 unit Sports cutter  
 from £2,995  
 Jacobsen Turfcat diesel,  
 50 or 60 inch flail: £5,950

CONTACT  
**CHRIS BRYDEN**  
 01777 704275  
 EVENINGS: 0115 920 9401



**BTME Hotline 01347 838581**

### RYAN GA 30 AERATOR

Approximately three years old.  
 New engine fitted October 1996.  
 In excellent condition - can be  
 seen working.

**£6,000**

Tel: 0113 2562530 or 0860 816918

### End of Season Sale

Toro Hydroject	£15000
Toro Workman	£12000
Toro Fairway Aerator	£13500
Toro Greens Aerator	£8500
1.5 mtr Vertidrain	£10000
Toro 3200D	£15500
Toro 5300 4wd	£21000
Toro 216D 3wd 8Bld	£11500
Kubota LB 3250	£9000
Kubota Grandel "P" Reg	£14000
Hi Tip Trailer	£3000
Metermatic FW15B	£3500

**D & E Turf 01388 608620**

### ERRINGTONS HORTICULTURAL

**Dealers for Toro Professional  
Turf Equipment.**

**Ex-Demo Machinery for sale.**

1x Vicon Spreader c/w frame for  
 Toro Workman or Cushman Truckster  
 or Tractor. Cost new £2955,  
 our price **£2000 + VAT.**

1x Hardi 600 AMPS Sprayer  
 (Ex Demo) to fit Toro Workman  
 c/w Jack Legs, Hydro Boom.  
 Cost new: £4855,  
 our price **£3600 + VAT.**

1x Coremaster 6/90  
 Pedestrian Aerator c/w 5/8" Hollow  
 Tines. Ex stock **£6400 + VAT.**  
 RRP £7975

**Telephone 0116 273 0421**



**Remember: BIGGA now accepts credit  
cards - the convenient way to pay for  
magazine or membership subscriptions  
as well as to buy BIGGA merchandise.  
For details, call 01347 838581**

## Job Shop

21 year old greenkeeper,  
 four years' experience,  
 qualified to City & Guilds 1,  
 NVQ Level 2 and PA1.  
 Experienced in golf course  
 construction and  
 maintenance.

I am hard working, honest,  
 reliable and will make a good  
 addition to any working  
 team. Willing to make a move  
 to anywhere in UK.

Box No JS 54/96, BIGGA, Aldwark  
 Manor, Aldwark, Aine, York YO6 2NF

Well qualified Greenkeeper.  
 Aged 27.

10 years working experience.  
 National Certificate in  
 Greenkeeping (12 month full  
 time course) and City &  
 Guilds I and II.

Spraying certificates.  
 Experienced in working with  
 clay based and USGA  
 greens. Experienced in  
 construction, and bringing  
 new course into play.  
 Seeking employment in UK.

Box No JS 53/96, BIGGA, Aldwark  
 Manor, Aldwark, Aine, York YO6 2NF

Ambitious and  
 enthusiastic 26 year old  
 with four years in  
 greenkeeping profession.  
 Qualifications include City  
 & Guilds phase II and IV.  
 Sound knowledge of golf  
 course maintenance and  
 golf course construction.

Seeks challenging  
 position in UK or abroad.

Box No JS 52/96, BIGGA, Aldwark  
 Manor, Aldwark, Aine, York YO6 2NF



January 22-24, 1997  
**It's getting closer  
all the time!**

**BTME Hotline 01347 838581**

# PANELITE

## MODULAFORM BUILDINGS

*for Quality, Choice and Style*

- \* TRACTOR SHEDS
- \* STORAGE BUILDINGS
- \* OFFICES
- \* CLUB HOUSES
- \* HALFWAY HOUSES



*"One of the UK's Largest Manufacturers of Modula Buildings, over 30 years experience"*

- Secure & Adaptable
- Designed, manufactured, delivered & erected
- Full mechanical & electrical package
- Traditional build if required
- Base laying service
- Hundreds of different styles

PHONE FOR A FREE COLOUR BROCHURE

**Tel: (0113) 286 3375**  
**Fax: (0113) 286 3377**

GREEN LANE • GARFORTH • LEEDS LS25 2AE

AD  
REF  
487

# CourseWear

**Clothing and Footwear**

**WEAR FOR ALL SEASONS**

- Protective footwear and clothing
- Foul weather wear
- Chain saw trousers
- Drivers suits
- Protective headgear



For staff recognition and security on the course choose co-ordinated clothing from Course Wear. Logos and emblems can be applied to most items.

# CourseWear

THE NEW APPROACH TO GREENSTAFF CLOTHING

Parkway House, Worth Way, Keighley, West Yorkshire BD21 5LD

Tel: 01535 611103. Fax: 01535 611546

AD  
REF  
524

## RECRUITMENT

### North Foreland Golf Club

requires an

## ASSISTANT GREENKEEPER

For Open Championship Final Qualifying Course.

The applicant would need suitable experience or qualifications. BIGGA rates apply. No accommodation.

Apply in writing with CV to:

Head Greenkeeper, North Foreland Golf Club,  
Kingsgate, Broadstairs, Kent CT10 3PU



### The North Shore Golf Club

Skegness, Lincs

requires a

## QUALIFIED HEAD GREENKEEPER

for its 18 hole long established very popular course.

The successful candidate will have a working knowledge of maintenance of links as well as parkland, and be experienced in personnel leadership, motivation, irrigation, turf maintenance and machine maintenance.

Applications in writing with full CV including current salary to:

The Company Secretary, Mitchell Leisure Inv. Ltd., Skegness Pier,  
Grand Parade, Skegness, Lincs PE25 2UE



### Colville Park Golf Club

requires a

## HEAD GREENKEEPER

Applicants must be experienced in all aspects of greenkeeping, properly qualified and have the ability to lead, motivate and work with existing staff.

Applications in writing to include full CV to:

The Golf Club Secretary, Colville Park Golf Club, Jerviston  
Estate, Motherwell ML1 4UG

# GREENKEEPER

*International*

Call Louise or  
Amanda on:

**01347 838581**

## Watermation

### DESIGN ENGINEERS

#### GOLF COURSE IRRIGATION

Due to increased business and expansion, we are seeking two motivated individuals who are willing to join our successful design team.

Preferred applicants shall have proven experience in golf course irrigation system design, a proven track record with two to four years' experience in design, plus interpersonal skills are required. The successful applicant should have CAD skills and be computer literate.

Please send application with CV to:

**Richard Pocock**  
Contract Sales Manager  
Watermation Sprinkler & Controls Ltd  
Tongham Road  
Aldershot  
Hants GU12 4AA

## Pleasington Golf Club

requires a

### HEAD GREENKEEPER

Pleasington, near Blackburn in Lancashire, is one of the best inland courses in the North of England.

The head greenkeeper will be a fully qualified experienced greenkeeper able to maintain the course to the highest standards, successfully manage course improvement and development, and generally be a sound organiser.

Application forms may be obtained from:

**The Honorary Secretary**  
Pleasington Golf Club  
Pleasington  
Blackburn  
Lancashire BB2 5JF

Telephone: (01254) 202177

## Hags Castle Golf Club

### MECHANIC/GREENKEEPER

Required to service and maintain a full range of greenkeeping machinery. Experience in cylinder grinding is essential.

Basic knowledge or experience in greenkeeping would be an advantage.

Salary negotiable. Apply in writing with CV to:

**The Secretary**  
Hags Castle Golf Club  
70 Dumbreck Road, Glasgow G41 4SN

## Upton-by-Chester Golf Club

require a

### HEAD GREENKEEPER

A busy 18 hole Parkland Course require applicants with recognised qualifications and sound knowledge of modern greenkeeping methods. Experience in course maintenance, organisational skills and ability to maintain a wide range of modern machinery essential.

Salary negotiable according to experience and qualifications.

Applications in writing with full CV to be sent to:

**Mr John B Durban, Secretary, Upton-by-Chester Golf Club,**  
Upton Lane, Chester CH2 1EE

Closing date for applications: 30th November 1996

### An unique opportunity to specialise in an aspect of golf course management

A young, growing organisation directly involved in contract golf course management require an additional team member who is able to:

- ◆ Work on own initiative
- ◆ Show an eye for detail and perform work to high standards
- ◆ Be reliable and flexible
- ◆ Become a key team player

The work will centre in and around the South of England but travel outside this boundary can be expected. Applicants must be experienced in all aspects of Greenkeeping, hold PA1 and PA2 and a full, clean driving licence.

If you are interested in receiving more details, please reply in writing with current CV to:

**Box Number R111/96, Greenkeeper International,**  
BIGGA, Aldwark Manor, Aldwark, Alne, York YO6 2NF

## Sutton Green Golf Club

requires an

### ASSISTANT GREENKEEPER

Minimum qualifications Greenkeeping to Phase I and II, in addition, both PA1 and PA2 Spraying Certificates plus full driving licence.

Salary based on BIGGA recommended rates.

Applications in writing with CV to:

**Head Greenkeeper, Sutton Green Golf Club, New Lane,**  
Sutton Green, Nr Guildford, Surrey GU4 7QT

## GOLF COURSE SUPERINTENDENT

ARZAGA GOLF CLUB, ITALY

EXCELLENT PACKAGE NEGOTIABLE

EXCEPTIONAL OPPORTUNITY FOR HIGH QUALITY INDIVIDUAL TO SPEARHEAD THE MAINTENANCE OF THIS NEW JACK NICKLAUS II DESIGNED 27 HOLE GOLF COURSE LOCATED NEAR THE LAKE OF GARDA, BRESCIA PROVINCE, ITALY.

THE GOLF COURSE IS UNDER CONSTRUCTION AND THE SUCCESSFUL APPLICANT WILL BE APPOINTED TO COMMENCE IN MARCH 1997 PRIOR TO THE FINAL SEEDING PREPARATIONS. THE PRIMARY RESPONSIBILITIES ARE TO GROW-IN A BENT GRASS GOLF COURSE, MAINTAIN A FIRST RATE GOLF COURSE AND DEVELOP A COMMITTED AND HIGH QUALITY GREENKEEPING STAFF.

THIS DEVELOPMENT IS ITALY'S FIRST PUBLIC ACCESS AND FIVE STAR HOTEL BASED GOLF COURSE AND IS SCHEDULED TO OPEN FOR PLAY IN SUMMER 1998.

The successful applicant will be a highly motivated individual demonstrating a successful greenkeeping background including:

- An excellent working knowledge of growing in high quality golf courses with USGA specification greens
- Full knowledge of modern golf course management practices
- Experience in managing creeping bent grass golf courses
- Excellent organisational and communication skills, the ability to speak Italian will be an advantage.
- Preparation and control of budgets
- Maintenance of health and safety requirements
- Supervision and development training for all greenkeeping staff

*The appointment will be for an initial period of three years.*

APPLICATIONS WITH A FULL CURRICULUM VITAE TO:  
Ref: LG1

**Mercator Recruitment**

*The Glassmill, 1 Battersea Bridge Road, London SW11 3BZ*  
OR FAX ON +44 (0) 171 924 5169



**The Mercator Group**

### Golf und Country Club Seddiner See

in Berlin, Germany, requires applicants for:

## HEAD GREENKEEPER AND EXPERIENCED ASSISTANTS

Positioned close to the city of Berlin, the 18 holes is one of a pair of championship courses situated on the banks of the Seddiner See, with golf facilities which also include a 4 hole academy, driving range and two putting greens. The position reports directly to the Course Superintendent and is responsible for the maintenance and development of 18 championship holes.

The successful candidate will possess recognised qualifications and be able to organise and motivate his own team on a daily basis. A knowledge of German would be advantageous.

Interested candidates should apply to:

**The Course Superintendent**  
**Golf und Country Club Seddiner See**  
**Fercher Weg**  
**14562 Wildenbruch**  
**Germany**  
**Tel: 0049 33205 64904**  
**Fax: 0049 33205 64905**

## AMENITY SALES REPRESENTATIVE

£ neg + car + benefits, N England/Scotland



Levington Horticulture Ltd is the market leader in the manufacture and supply of high quality branded products to both amateur and professional gardening markets.

In the Professional market, our customers are professional growers, local authorities and sports/leisure facilities which encompass golf courses, bowls clubs, etc.

A rare opportunity now exists in our Amenity team for a sales professional living in the West Yorkshire region. Ideally aged 25-40, you should possess the flair, drive and ambition to sell strongly branded fertilizers and chemicals used in the care and maintenance of turf. A background knowledge of horticulture/agriculture would be particularly advantageous, but of equal importance is a demonstrable record of sales achievement. Applicants not already possessing the BASIS qualification will be required to achieve this level of competence with the Company's financial support.

Our competitive benefits package includes a fully-expensed company car, 25 days holiday, contributory pension and subsidised health schemes.

Please write with full career details, including current earnings, to: The Personnel Department, Levington Horticulture Ltd, Paper Mill Lane, Bramford, Ipswich, Suffolk IP8 4BZ.

Closing date for applications: 18<sup>th</sup> November 1996.





Require

## EXPERIENCED AREA SALES MANAGER

Working from the Leyland Depot, selling mowing and turf maintenance machinery.

Remuneration package will be discussed according to experience.

Apply in writing to:

**Mr A Beamish**  
**Burrows GM Ltd**  
**Wigan Road**  
**Leyland**  
**Lancashire PR5 2UE**



## The Warrington Golf Club

Applications are invited for the position of

## HEAD GREENKEEPER

at this well established 18 hole parkland course.

Applicants will be suitably qualified and have relevant practical experience in all aspects of course management including machinery upkeep.

Salary will be negotiable, depending upon experience.

Accommodation is not available.

Applications in writing including a CV to:

**The Secretary, The Warrington Golf Club,**  
**Hill Warren, London Road, Appleton,**  
**Warrington, Cheshire WA4 5HR**

## Ilkley Golf Club West Yorkshire

Due to the retirement of a long serving member of staff, applications are invited for the position of

## HEAD GREENKEEPER

Applicants must possess recognised qualifications, be experienced in all aspects of golf course management including maintenance of machinery, budgeting and the ability to lead and motivate staff.

Ilkley is a tree lined course standing alongside the River Wharfe and a good working knowledge of this type of course would be an advantage.

Salary will be commensurate with experience and qualifications. No accommodation is provided.

Applications in writing with full Cv to:

**The Secretary**  
**Ilkley Golf Club**  
**Myddleston, Ilkley LS29 OBE**



## THE LONDON GOLF CLUB ASSISTANT GOLF COURSES SUPERINTENDENT

Applications are invited for the above position.

This post will give the successful applicant a unique opportunity to join our dedicated maintenance team, maintaining quality playing surfaces across our 36 hole Golden Bear designed private members club.

With a minimum of eight years experience and all relevant qualifications, the successful applicant will be required to motivate and supervise staff and take responsibility for programming and overseeing the day to day maintenance of the Heritage Courses, under the guidance of the Golf Courses Superintendent. In the absence of the Golf Courses Superintendent the job holder will be required to deputise.

Applicants will need to demonstrate sound and positive team management, self motivation and good communication skills, working closely with the Head Greenkeeper from the International Course.

Please forward your CV in the strictest confidence, no later than 15th December 1996, to:

**Mr Steve Jones, Golf Courses Superintendent,**  
**The London Golf Club plc, South Ash Manor Estate, Ash,**  
**Nr Sevenoaks, Kent TN15 7EN**



Paul Jenkins



Cedric Gough



Huw Morgan



Stewart McBain



David Leach

# Who will be the lucky seventh?

## PAUL JENKINS

Age: 37  
Golf Club: Lilleybrook GC.  
Region: South West and South Wales

Paul has been Course Manager at Lilleybrook, a course built on heavy clay, for four years and in that time he has overhauled all the bunkers and upgraded most of the machinery.

He began his career as an assistant at King's Norton GC where he was involved in the hosting of a televised PGA event. From there he became Head Greenkeeper at Osborne GC on the Isle of Wight, set in the grounds of Queen Victoria's summer residence. In 1985 he moved to Gloucester Hotel and Country Club as Assistant Grounds Manager where he was involved in the running of an 18 hole course, nine hole par three course, ski centre, driving range as well as the hotel grounds.

Married with two step children, Paul's hobbies are badminton, skiing, Formula One Grand Prix, photography and ten pin bowling – under the heading of achievements Paul put managing to get four pit passes for the '97 British Grand Prix!

He believes that the key to good greenkeeping is common sense and an eye for detail both of which he says he possesses.

## CEDRIC GOUGH

Age: 50  
Golf Course: Broadway GC  
Region: Midland

Cedric has been at Broadway Golf Club for 23 years and had his job redefined as Course Manager in 1989 and works with a team of three greenkeepers and a greenkeeper/mechanic – he has never appointed a Deputy or First assistant as they work well as a team.

He began his career at a nine hole course at Bridgenorth which he worked on singlehandedly and it was the pro of the course Willie Evans who set him on the path of greenkeeping. After three years he became First Assistant at Ross-on-

## Miracle Professional

### Premier Greenkeeper of the Year

**F**ive greenkeepers have the chance to be the seventh Miracle Professional Premier Greenkeeper of the Year and win a trip to Las Vegas for the GCSAA Conference.

After some extensive interviews and course visits the 31 original candidates for the Miracle Professional Premier Greenkeeper of the Year have been whittled down to five, one from each region, the winner will be decided at the final at Aldwark Manor on December 1 and 2.

Each region visited the courses in their own area to identify their finalist then Pat Murphy, Chairman of the Education Subcommittee and Richard Minton, of Miracle Professional, visited the courses of the finalists in late September so that they can be in a position to pass on information to the two other judges in the final, Neil Thomas Executive Director of BIGGA and Roger Mossop, of Miracle Professional.

As well as the honour of joining Anthony Davies, David Whitaker, Ian Harrison, Gordon Irvine, David Walden and Mike Goodhind as Miracle Professional Premier Greenkeeper of the Year the winner will receive a trip to the GCSAA Conference, which this year is in Las Vegas and his team will receive £500.

Second prize is a weekend break for two to London and tickets for a West End Show while the third prize is a weekend break for two.

Wye where he worked under Derek Blades before moving to Broadway as Head Greenkeeper at the age of 27.

Outside of work he likes to keep up to date with work at other golf course by playing and visiting while he likes to relax by fishing, cycling with his wife Judith or being at home with his birds and fish.

He is also a regular supporter of Wolverhampton Wanderers following their quest to get into the Premiership.

## STEWART "HUW" MORGAN

Age: 30  
Course: Wildernesse Club  
Region: South East

Huw has been Course Manager at Wildernesse for three and a half years where he manages the woodland course and the 100 acre woodland with a mix of tree – the course earned an environment award recently.

Was the IOG Young Groundsman of the Year in 1987-88 and

visited the GCSAA show in Houston visiting 20 golf courses and studying maintenance techniques during the trip.

Before arriving at Wildernesse Huw was Course Manager at Fairwood Park GC in Swansea and Head Greenkeeper at Southern-down GC in Bridgend.

Outside work he enjoys football, golf off a handicap of 6, indeed any sport while he is an active BIGGA committee man currently Vice Chairman of the Kent Section and on the South East Regional Board.

His aim is to continue to enjoy going to work in the morning and spending time with wife two children and friends.

## STEWART McBAIN

Age: 37  
Golf Club: Hazlehead GC and Balnagask GC  
Region: Scotland

Stewart is employed by Aberdeen City Council and his job title is

Grounds Services Supervisor and as such is responsible not only for the two golf courses but three sports centres, five bowling greens, eight tennis courts and two 18 hole putting greens. However he lists as a major achievement getting Hazelhead, a Alistair McKenzie designed course, up to a standard fit for tournament golf – in '94 it hosted a Scotland v England professional women's event.

He served a four year apprenticeship at Stonehaven GC and spent a further four years there as Assistant Head Greenkeeper before moving to Murcar GC as Assistant Head.

He moved to Aberdeen City Council as Head Greenkeeper at Balnagask (Nigg Bay GC) before restructuring within the City Council saw him apply for and get his current position.

He is married, a 7 handicap golfer and is also a carpet bowling champion and DIY enthusiast.

## DAVID LEACH

Age: 31  
Golf Club: North Manchester GC  
Region: Northern

David has been Head Greenkeeper at North Manchester for six and a half years having previously worked under Arthur Warhurst. He has worked on green construction, tees, bunkers etc and has recently planned and laid a fully integrated drainage system in a fairway using 1200 metres of pipe.

The club borders the biggest overspill council housing estate in Europe and serious vandalism is a serious, daily problem.

He began his career at Manchester GC where he worked with Edwin Walsh for five years, becoming fully qualified in 1985. He was promoted to Deputy a year later and moved to North Manchester in '88.

Married with three children he is a keen recorder collector and DIY enthusiast.

He is also working towards Master Greenkeeper status.

# Tough on turf disease

- Rapid contact action.
- Immediately effective against a wide range of turf diseases including Fusarium patch, Red thread, and Dollar spot.
- Will not scorch or damage turf.
- Unique rainfast formulation allows application all year round but especially useful during the cooler months.
- Available in 1 litre and new 5 litre containers.
- The No 1. choice for turf professionals for over 11 years.



NOW  
AVAILABLE  
IN 5L  
CANS



## Tender on turf

**RHÔNE-POULENC**

Rhône-Poulenc Amenity, Fyfield Road, Ongar, Essex CM5 0HW. Telephone 01277 31114 Fax 01277 301119.  
ROVRAI GREEN CONTAINS IPRODIONE. READ THE LABEL BEFORE YOU BUY: USE PESTICIDES SAFELY. (MAFF 05702)



AD  
REF  
59

For details of your nearest Rhône-Poulenc distributor, call 01277 301116

# MAKES MOWING EASY AND SERVICING SIMPLE



## The Hayter LT324 Triple Turf Mower

This professional multi-task mower combines high performance with rugged reliability, making it ideal for both golf course and local authority work.

It comes complete with a powerful Kubota VI505-BB-EC engine, a 4-wheel drive option

for demanding conditions and a smooth transmission control for a comfortable ride.

Convenience features include a hinged access system for easy maintenance and a modern, streamlined design with unrestricted operator vision.



# HAYTER

Hayter Limited

Spellbrook Bishop's Stortford Herts CM23 4BU England

Tel: 01279 723444 Fax: 01279 600338

AD  
REF  
90

*See the Hayter LT324 at your local Hayter dealership or contact:*