



SOON

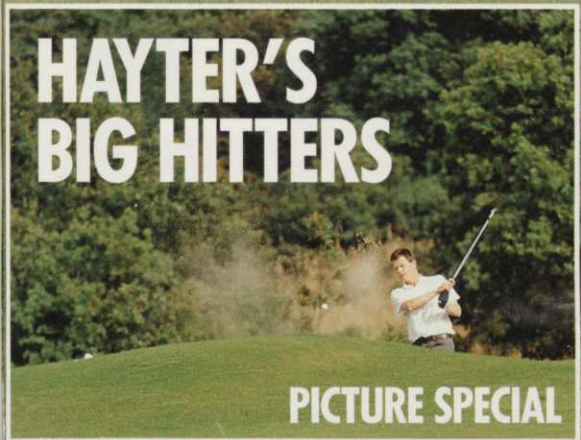
GREENKEEPER

International

Going Dutch



**HAYER'S
BIG HITTERS**



PICTURE SPECIAL

**Why British
greenkeepers
are taking their
skills abroad**



Out of this world



But not out of the way

The stars will be out for the BIGGA Turf Management Exhibition and Education Seminar Programme in Harrogate.

It's the event for *everyone* with an interest in fine turf. As well as greenkeepers, there's something for golf club officials, local authority specifiers, contractors... the entire galaxy of turf care professionals.

The week begins with an education programme which will be unequalled in Europe during 1995. Prestigious speakers from across the world will be making their way to Harrogate. Dr James Beard, Professor Emeritus of Turf Grass Science, Texas A&M University and Cameron Sinclair, Chairman, British Institute of Golf Course Architects, are just two of the high calibre speakers with a mission to inspire, educate and motivate.

The full programme, "The Learning Experience", is included as an insert in this magazine.

With the added benefit of an internationally recognised exhibition, the BTME week in Harrogate is truly an event you should shift heaven and earth to attend.

As our information panel shows, the Yorkshire town of Harrogate is easily accessible. When you get there, you'll find all the events are within walking distance. An elegant spa town with superb hotels and restaurants waits to welcome you. Historic York is half an hour's drive away and the breathtaking beauty of the North York Moors and Yorkshire Dales is on your doorstep.

It's your chance to turn a learning experience into an adventure.

BIGGA National Education Conference: January 23-24, 1995

BTME and Educational Seminar Programme: January 25-27, 1995

the
Learning
experience

Now read the book

BTME and the Educational Seminar Programme is organised by the British and International Golf Greenkeepers Association, Aldwark Manor, Aldwark, Alne, York YO6 2NF. For more details, or for an extra copy of "The Learning Experience", call Ken Richardson, BIGGA's education officer, on 0347 838581.

FINDING YOUR WAY TO HARROGATE

BY RAIL: 25 trains per day run from London King's Cross to Harrogate.

BY AIR: Leeds/Bradford Airport is 12 miles away and has direct flights from major European cities.



BY ROAD: From London - A1, exit Wetherby, nine miles from Harrogate. M1 and M62 to Leeds, which is 15 miles away.
BY SEA: North Sea Ferries, from Rotterdam/Zeebrugge to Hull, 60 miles away.

TO
PRE-REGISTER
FOR BTME,
COMPLETE
AND RETURN
THE
POSTCARD
FACING PAGE
54

GREENKEEPER

International



President
The Rt. Hon.
Viscount Whitelaw
K.T., C.H., M.C.,
D.L.

BIGGA BOARD OF MANAGEMENT

Chairman: John Millen
Vice-Chairman: Barry Heaney

BOARD MEMBERS

Richard Barker George Malcolm
Gordon Moir John Crawford
Huw Parry Dean Cleaver
Jeffrey Mills George Barr

EXECUTIVE DIRECTOR

Neil Thomas B.A.

EDUCATION OFFICER

Ken Richardson

ADMINISTRATION MANAGER

John Pemberton

GREENKEEPER

International

is the official monthly magazine of the British & International Golf Greenkeepers Association. Contact us at Aldwark Manor, Aldwark, Alne, York YO6 2NF

EDITOR

Chris Boiling
Tel: 0347 838581 • Fax: 0347 838864

DESIGN/PRODUCTION EDITOR

Tim Moat
Tel: 0904 610611 • Fax: 0904 643074

SALES AND MARKETING MANAGER

Bill Lynch
Tel/Fax: 091 413 7218

SENIOR ADVERTISING SALES EXECUTIVE

Carol Dutton
Tel: 0347 838581 • Fax: 0347 838864

SALES AND MARKETING ASSISTANT

Louise Lunn
Tel: 0347 838581 • Fax: 0347 838864

PRINTING

Hi-Tec Print, Unit 7, Universal Crescent,
North Anston Trading Estate,
North Anston, Sheffield S31 7NZ
Tel: 0909 568533 • Fax: 0909 568206

Please send all editorial contributions, advertising copy, subscriptions and address changes to BIGGA at Aldwark Manor, Aldwark, Alne, York YO6 2NF

Contents may not be reprinted or otherwise reproduced without written permission. Return postage must accompany all materials submitted if return is requested. No responsibility can be assumed for unsolicited materials. The right is reserved to edit submissions before publication.

Although every care will be taken, no responsibility is accepted for loss of manuscripts, photographs or artwork. Opinions expressed are not necessarily those of the Association and no responsibility is accepted by the Association for such content, advertising or product information that may appear.

Circulation is by subscription. Subscription rate: UK £34 per year, Europe and Eire £44. The magazine is also distributed to BIGGA members, golf clubs, local authorities, the turf industry, libraries and central government.

ISSN 0961-6977
© 1994 British & International Golf Greenkeepers Association

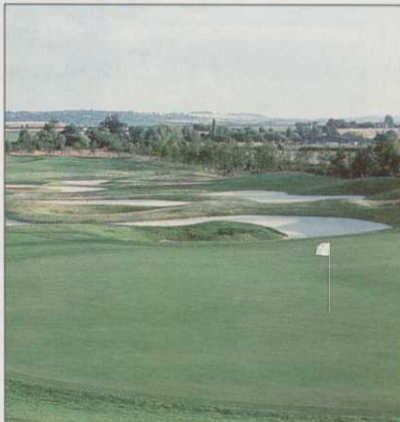
OCTOBER 1994

Contents

The 'inland links' course

The Oxfordshire Golf Course opened last year with big plans for its future. It certainly has impressive credentials.

Hugh Tilley reports from the club which has championship status firmly in its sights **Pages 20-26**



Hayter Challenge Tournament Final

Greenkeepers turned "Pannal beaters" as they took on the challenge of this Yorkshire course. A father and son combination played particularly well **Pages 12-14**

Students in the spotlight

Which one of the magnificent seven finalists will go on to become Toro/PGA European Tour Student Greenkeeper of the Year? See who you would vote for **Pages 10-11**

Holland: where the grass is greener

Chris Boiling goes Dutch to track down British greenkeepers making a go of things across the North Sea. He discovers there can be rich rewards in store **Pages 35-37**

Regular features

BIGGA in focus Neil Thomas reveals the outcome of a long series of discussions on the future of the BIGGA Turf Management Exhibition **Page 4**

News Keeping you up to date with all that's going on, including the launch of a new training video, new faces and changing places **Pages 5,7,19,33,54**

BTME Competition It's the final month in our BTME competition which gives you the chance to win £750-worth of prizes. **Page 9**

Cover

Adrian Simm, a British course manager now in charge at Amsterdamse Golf Club, Holland

WIN £50 CASH IN OUR BUYER'S GUIDE COMPETITION: **TURN TO PAGE 45**

Greenkeeper Education and Development Fund

The Fund provides the key to the future for greenkeeper, golf club and game. Individuals and companies can join the Golden Key Circle and Silver Key Circle. For details, contact BIGGA on 0347 838581.

GOLDEN KEY CIRCLE COMPANY MEMBERS:
• ET Breakwell Ltd • Hardi Ltd • Hayters PLC
• ICI Professional Products • Jacobsens • Kubota UK Ltd
• Lely UK Ltd • Rigby Taylor Ltd • Toro Irrigation

SILVER KEY CIRCLE COMPANY MEMBERS:
• Ransomes • Risboro' Turf



For a BTME '95 information pack call Louise Lunn on 0347 838581 - quickly! Only eight stands still available

FREE READER REPLY SERVICE

Use the post-paid Reader Reply Card facing Page 54 for further information on the products and services advertised in this issue. Just state the companies' Ad Ref numbers, post the card to us and we'll arrange for further information to be sent to you direct.



ADVERTISERS' INDEX

a quick reference guide

	Ad Ref	Page
Bob Andrews	381	42
Cleveland Sitesafe	56	43
DK East	468	26
Dowdeswell	450	21
Eric Hunter	73	24
Fosters	469	18
Groundhog	470	44
Hardi	25	41
Hayters	90	55
Irish Greenkeepers Association	458	10
Lely	61	22,23
Lockwood Grass Machinery	418	24
MJT Contracts	382	34
Mower Accessories	118	20
Multi-Core	347	34
Pattissons	35	26
Rhône Poulenc	59	6
Rocol	471	41
Rolawn	34	34
Rufford	5	56
Savana Turf	465	33
Shelton Trenching	69	18
Sisis	176	16
Standard Golf Colleges	421	36
Buyer's Guide		• 45-49
Classified		• 50
Recruitment		• 50-53
Job Shop		• 50

ADVERTISING WORKS IN GREENKEEPER INTERNATIONAL:

“ Our strategically planned advertising campaigns in Greenkeeper International over the past three years have without doubt contributed substantially to the healthy increase in sales for Toro products throughout the UK over that period. ”

- PETER MANSFIELD, Toro General Manager, Lely (UK) Ltd. UK distributor for Toro Commercial Products

FOR MORE DETAILS CALL: Bill Lynch on 091 413 7218, or Carol Dutton or Louise Lunn at BIGGA HQ on 0347 838581.



The show goes on

There can be no doubt that in the past year one of the most dominant themes in discussions amongst greenkeepers and members of the trade has been the future of industry shows. The future of the BIGGA Turf Management Exhibition has been at the forefront of those discussions. To recap a little, discussions started in earnest in May of 1993 when BIGGA was invited to attend a meeting convened by the Agricultural Engineers Association who through their Outdoor Power and Equipment Council represent the interests of the major manufacturing companies in our industry.

At that meeting both IOG and BALI were represented in addition to BIGGA. The meeting had been convened to convey to the three organisations the OPEC view that the time had come to establish a single indoor show for the industry incorporating shows currently organised by BIGGA, IOG and BALI. In the following months a number of meetings were held where the emphasis shifted away from IOG and BALI with a view to BIGGA being at the forefront of the new show. Developments accelerated in March this year when the AEA invited P&O Events Ltd to take the lead in establishing the new show. BIGGA continued discussions with P&O Events during which it became clear that the new show would be held at Olympia in London and whilst September 1995 had been the originally planned date, P&O Events moved this to January 1996 when it became clear that September was not a suitable date for greenkeepers to attend. BIGGA indicated to P&O Events its intention to survey its members on this extremely important issue to ascertain their views. This survey was conducted independently during August and September by the Golf Research Group and will be reported on in

detail in the November issue of *Greenkeeper International*. In the meantime P&O Events issued a press release to coincide with the SALTEX Exhibition at Windsor in September announcing the new show for January 1996 at Olympia.

There has, quite naturally therefore, been much concern within the Association and the industry as a whole. Throughout BIGGA has been mindful of two major considerations ie the views and wishes of our members and those of our exhibitors at Harrogate who provide the income not only to stage the BTME but to

Having considered all relevant factors, the Board has decided to continue with the BTME at Harrogate for the foreseeable future

assist in the development of a strong, professional body. From the outset BIGGA entered into discussions positively and with an eye to the future. In addition to the survey we have consulted widely not only with the AEA and P&O Events but with a broad spectrum of the industry. After eighteen months and with P&O Events' announcement of the new show in January 1996, your Board of Management has been faced with an extremely important decision on the future of the BTME. Having fully considered all relevant factors, the Board has decided to continue with the BTME at Harrogate for the foreseeable future. In making this decision the Board is aware that the BTME Steering Committee

continues with its support for the event and that this support reaches much further afield within the industry as a whole. The BTME is a growing, successful show but it is not a show which can stand still. The Steering Committee has recently had the opportunity to tour the new Hall Q at the Harrogate International Centre and this offers real opportunity for the further development of the BTME. With the addition of Halls D and Q there is the facility to double the available exhibition space.

BIGGA is aware of the perception within the industry that Har-

growing European market which becomes ever more accessible with improved transport links. We believe that through a partnership of Association and industry and with the committed backing of the Harrogate International Centre, the opportunity is there for the BTME, at the centre of the country, to continue to develop as an international show backed as it is not only by an excellent educational seminar programme but now also by BIGGA's National Education Conference. Careful consideration needs to be given to the sectors of the industry in which the BTME will seek to expand and as has happened since the first show in 1989 there will be ongoing consultations with the industry. One of the strengths of the BTME is its Steering Committee and the Association remains appreciative of the commitment and support it receives from Steering Committee members. It is an opportune time to acknowledge the support of those companies represented ie Ransomes, Zeneca, Farmura, Supaturf, Lely (UK) Toro, Hardi, Hayter, Kubota, Sisis, Jacobsens, Rolawn, Rigby Taylor, John Deere, Massey Ferguson and Gem Professional.

It has been a difficult period and there are many varied views within the industry on the need for shows, the number of those shows and their location. BIGGA will continue to consult and to listen and remain open-minded as to the future. It will also seek to ensure that the BTME remains the pre-eminent show for our industry with all roads, including those from Europe, leading to Harrogate each January. The 1995 show is eagerly anticipated. We at BIGGA are greatly appreciative of the industry's continued support and we look forward to January and a show which all the indicators suggest will be bigger and better than ever.



BIGGA in focus

BY NEIL THOMAS

rogate is not an international centre in the show sense. This is not a view prevalent in other industries who use Harrogate as the location for their shows. It is clear, therefore, that the Association, together with the Harrogate International Centre, must seek within the industry to change current perceptions and thereby enhance the status of the BTME as an international event. In the marketing of the BTME there will need to be a much greater emphasis on the excellent infrastructure at Harrogate and the improving communications particularly in respect of the Leeds/Bradford airport. Many of the companies who support us at the BTME are concerned at the need to further penetrate the

Carnoustie to stage Open after 24 years

After a 24-year gap, the Open Championship will return to Carnoustie in 1999. Work already done by John Philp's team includes the reconstruction of four greens and the redesign or introduction of 14 bunkers. He is also trying to encourage the growth of native fine grasses to restore the Championship course to true links character. It has also been announced that the 1995 and '96 Scottish Opens will be played on the 7,400-yard course.

The question being asked now is where will the Open go in 2001? St Andrews will host it in 1995 and 2000. It's going to Royal Lytham & St Annes in '96, Royal Troon in '97 and Royal Birkdale in 1998. When will it next return to Muirfield, Royal St George's or Turnberry?

Trial sites are needed for worm studies

The STRI is looking for trial sites for earthworm control studies, in particular golf courses in Yorkshire, Lancashire and Greater Manchester that experience heavy, fairly uniform earthworm casting.

If you are able to help, contact Dr SW Baker or EC Kirby at the STRI, St Ives Estate, Bingley, West Yorkshire BD16 1AU or on 0274 565131.

Tony's mission of mercy

Most greenkeepers use their holidays to take a well-earned rest. Not Tony Dyke, the head greenkeeper at Wyke Green Golf Club, Isleworth, Middlesex. He is going to spend his two-weeks holiday, October 13-23, driving to Romania with a truck-

load of goods for handicapped children. This will be his sixth trip there since 1991. Last time he was threatened with an iron bar at the border and nearly dragged out of his cab. "Only my leg wrapped round the steering wheel saved me."

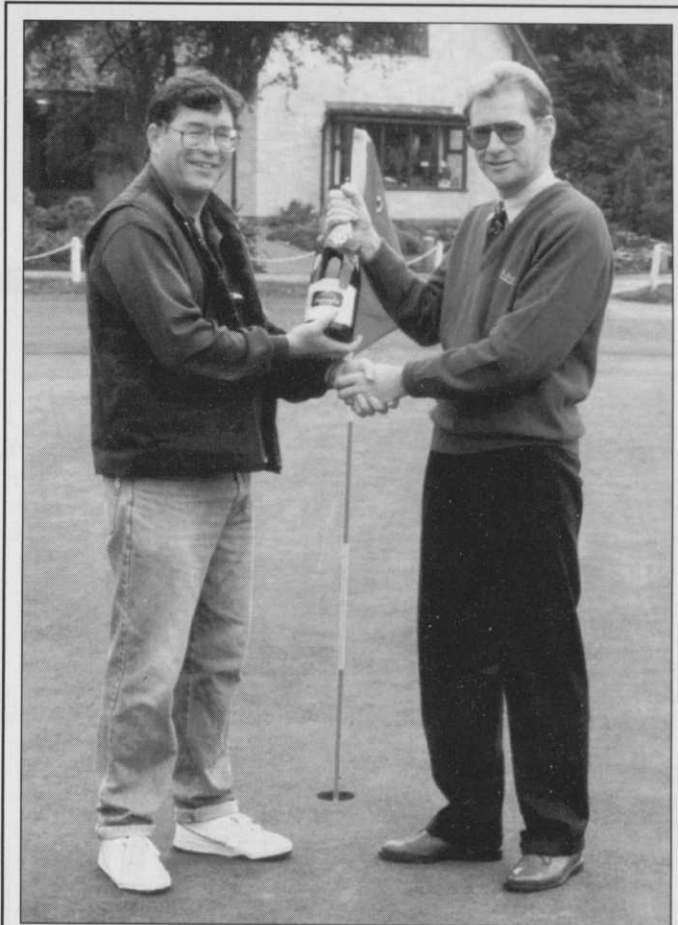
The problem was that some drivers had been stuck at the border for several days and got incensed when Tony's convoy, which is now familiar to the border guards and custom officials, was let through straight away.

Tony is not expect-

ing there to be any trouble this time (at least that's what he has told his wife). He says he was inspired to help these unfortunate children by an Anneka Rice TV programme. "I do it for the children. If you saw the state of the kids, you'd want to help too," he said.

Tony has been lent a 17-ton lorry by Alan Greenwood and John Hobbs of All Seasons Dressing. It will be one of five vehicles heading to Romania for the Ellesmere Port and Neston Romanian Appeal, which has adopted several orphanages in the country. The trucks will be packed with about 50-60 tonnes of goods, including toys, food and clothes.

NEWS



Teetotal Peter Woodward (left), course manager at Moor Hall GC in Sutton Coldfield, receives a magnum of champagne from Nigel Tyler, central sales rep for Rufford Top Dress Supplies. Peter won the champagne in a free draw on Rufford's stand at Saltex '94. He says he will crack it open when Walsall GC's Steve Wood beats him at golf!

FLYING DIVOTS

BIGGA review extended

■ BIGGA's Board of Management has decided to extend the consultation period on the initial draft document setting out a review of BIGGA's activities and its future plans.

The Board has also established a review body to extend the consultative process. Commented executive director Neil Thomas: "It is clear that the initial draft document which was circulated to our regional boards and section committees has stimulated much debate. As such, the Board of Management views the establishing of a review body as a logical step to further the review process. Each of the Association's five regions will be represented on the review body which will report to the Board of Management. At final draft stage, it is proposed to circulate the document to BIGGA's course managers/head greenkeepers for consideration by them and their staff. By the time the review process is concluded there will have been the widest possible consultation with BIGGA's 5,500 members."

The extended timescale means recommendations will be presented to the January 1996 annual general meeting.



■ Links supervisor Walter Woods (left) receives a ship's decanter from St Andrews' general manager Nicky James in recognition of his 20 years service at the Home of Golf.

■ Brian D Pierson's contracts co-ordinator, Paul Mould, has married Brian and Ann's daughter, Lisa.

■ Maxicrop International has appointed Malcolm Philby, formerly of Dow Elanco, as new territory manager covering the Midlands and Wales.



1 YEARS ON



AND STILL

GOING



STRONG



It takes time to build a solid reputation for performance and reliability.

But when turf diseases strike, time is the last thing you've got.

ROVRAL GREEN'S active ingredient iprodione, gives immediate, effective and long lasting control of a wide range of turf diseases including Fusarium patch, Red thread and Dollar spot.

With its rapid contact action and special rainfast formulation, ROVRAL GREEN is unaffected by changing weather conditions, making it equally reliable all year round, but especially powerful during the cooler months when there is little or no grass growth.

So it's little wonder that after 11 years at the top, the reliability, performance and reputation of ROVRAL GREEN still makes it the number one choice of UK turf professionals.



Rhone-Poulenc Environmental Products, Fyfield Road, Ongar, Essex CM5 0HW. Telephone 01277 301115 Fax 01277 301119.
ROVRAL GREEN CONTAINS IPRDIONE. READ THE LABEL BEFORE YOU BUY: USE PESTICIDES SAFELY.



DISTRIBUTED BY:
Banbridge, Co. Down
James Coburn & Sons Ltd.
Tel: 08206 62207
Basingstoke
Sta-Brite Supplies Ltd.
Tel: 0256 811811
Birmingham
E.T. Breakwell Ltd.
Tel: 021 733 3344

Bournemouth
Roffey Brothers Ltd.
Tel: 0202 537777
Bristol
Avoncrop Amenity Products.
Tel: 0934 820868
Co. Dublin
Unichem Ltd.
Tel: 01 835 1499

Colchester, Essex
Kings Horticulture Ltd.
Tel: 0787 223300
Dublin
Spray Chem Ltd.
Tel: 01 830 9099
Glasgow
Richard Aitken (Seedsmen) Ltd.
Tel: 041 440 0033

Home Counties
Driving Force Leisure (Europe) Ltd.
Tel: 0508 528828
Kent
Eden Park Ltd.
Tel: 0795 471583
Lancashire
Gem Professional.
Tel: 0254 393321

Midlothian
Stewart & Co. Seedsmen Ltd.
Tel: 031 663 6617
Shropshire
Amenity Land Services Ltd.
Tel: 0952 641949
Suffolk
R.E. Rushbrook & Son.
Tel: 0473 830273
Yorkshire
Aitken's Sportsturf Ltd.
Tel: 0977 681155

FOR A TOP PERFORMANCE, USE THE TOP PERFORMER. ROVRAL GREEN.

Maintenance facility is a real luxury

Martin Smith, head greenkeeper at Nottinghamshire's Ramsdale Park Golf Centre, has a maintenance facility that most greenkeepers can only dream about.

Costing £32,000, its facilities include an implement and equipment store, top dressing preparation room, chemical store, office, mess room and staff washroom. It is 30.6m long, 16.2m wide and has an eave height of 2.74m. It also looks good with its olive green roof cladding, brown stone wall cladding and high roller shutter doors.

"Most golf clubs or centres do



not have adequate greenkeeper facilities and few have mess and washroom areas for their staff. It is for this reason that the Ramsdale Park's building is the envy of the county," says Mr Smith.

"For example, it is unusual to have an indoor top dressing store. Without the facility, we would have to buy top soil and sand when required because storage under an outside cover proves

wasteful with the bottom of the pile being too damp, thus causing clogging in modern machinery. So not only do we save money by buying materials in bulk at the right time, we also minimise on wastage and keep machinery maintenance costs to a minimum."

The Leofric Buildings' 'Enterprise system building' was erected in 20 days.

Training video launched

A new training video – a joint venture between BIGGA and Toro – is now available. Titled 'Raising the Standard in Mowing Management', the new video was premiered at the recent Saltex show. Topics covered include the proper preparation of machinery prior to use, the correct practice and technique for all mowing situations, such as cutting of banks, rough, semi-rough, fairways, surrounds, teeing grounds and putting surfaces.

The film features animated and slow motion sequences showing in detail the relationship between the cutting action of the mower blades and the removal of grass.

A typical mowing operation from start to finish is illustrated, demonstrating essential health and safety factors as well as the correct course courtesy to be followed. At the end of mowing

operations the film details the recommended practices for preparing machines for storage.

BIGGA chairman John Millen, who has been closely involved in



the video's scripting, believes it to be a major new training aid for all those responsible for golf course turf management. He said: "I welcome this collaboration and co-operation between BIGGA and

Toro in making this education and training video for the benefit of all golf course greenkeepers."

Graham Dale, managing director of Lely UK, distributors for the film's sponsors, the Toro Company, said: "Toro is a big supporter of the education and training of golf greenkeepers and already jointly sponsors the BIGGA-organised 1994 Toro/PGA European Tour Student Greenkeeper Awards. We are pleased to extend this support through our sponsorship of the new turf management training video."

Free copies of the 40-minute video – filmed at the St Andrews Links Old Course, and Moor Park Golf Club – are being distributed to 2,000 UK golf clubs, including all those with BIGGA members. Copies are also being sent to greenkeeping training colleges. Other copies are available from Sami Collins, BIGGA, Aldwark Manor, Aldwark, Alne, York YO6 2NF.

Further details are available from the video's producer, Richard Fry, at Marketing Link Associates. Tel: 0268 413798.

■ BIGGA's latest video, a comprehensive guide to course preparation, is being shot at Prestbury and Royal Liverpool courses at the moment. Due to be launched at the '95 BTME at Harrogate, it is being funded by BIGGA's Education and Development Fund.

FLYING DIVOTS

■ BIGGA's chairman, John Millen, has left the Weald of Kent, the course he helped design and build, to take up the new post of director of greenkeeping with Golf Partners International Ltd. He will be based at the company's headquarters at The Tytherington, Macclesfield, and be responsible for the company's greenkeeping interests. Golf Partners is looking to buy courses.



■ Keen golfer Masakazu Miyake, 47, has taken up his post as president of Kubota (UK) Ltd. He replaces Bon

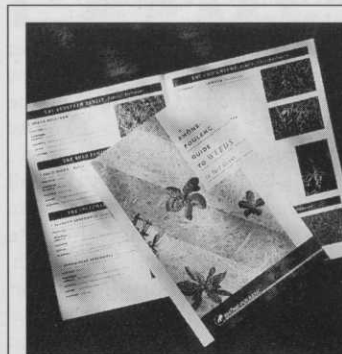
Tabata who has returned to Kubota Corporation's headquarters in Osaka, Japan, as manager of the engine export department.

■ Andrew Corstorphine, head greenkeeper of the Old and New Courses at St Andrews for more than 20 years has died, aged 94.

■ Paul Harley has wanted to be a head greenkeeper since he left school. Now the 28-year-old 14-handicap golfer has got the top job at Crewe GC.

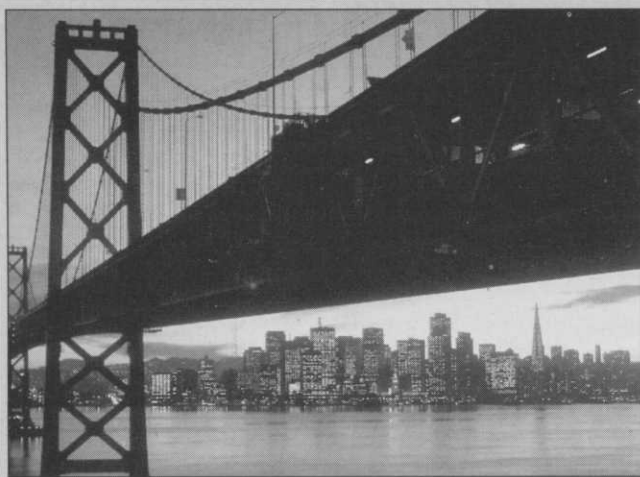
■ Greenkeepers are about to be sold in many pro shops! 'The Greenkeeper' is the name of a new retractable pitch mark repairer produced by Activity & Leisure Products of Wareham, Dorset.

■ New courses opened recently include 18-hole Cookridge Hall near Leeds and nine-hole Blackwater Valley Golf Centre near Eversley, Hampshire. Ten new holes costing £265,000 have been opened at Newton Green, one of Suffolk's oldest courses. Courses in trouble include nine-hole Fingle Glen GC near Exeter which is now in the hands of the receivers. A course out of trouble, in theory, is Sleafy Hall. The Northumberland golf and country club complex, which went into receivership with debts of £27 million, has been sold for around £5 million to a Swedish bank, according to Golf Weekly.



■ Rhône-Poulenc has produced a new book on weeds. The comprehensive guide, which contains photographs and concise descriptions of the major weeds in turf, along with product advice for their control, costs £2 plus 50p post and packing. Alternatively, The Weed Book is free when you purchase a container of Spearhead, the new selective weedkiller for use on turf.

Telephone: 0277 301115.



Come with BIGGA to the GCSAA Conference and Show *San Francisco '95*

The Golf Course Superintendents Association of America will be holding its 66th International Golf Course Conference and Show in San Francisco from February 20-27, 1995.

BIGGA's party attending this major international event will assemble on Sunday February 19 at the Excelsior Hotel, Heathrow Airport, leaving the next morning on a direct flight to San Francisco and arriving back at Heathrow on Wednesday, March 1.

The GCSAA will present an action-packed week dedicated to presenting the latest in educational opportunities with more than 60 educational seminars on offer, the newest golf course products and services, and an opportunity to meet with fellow professionals. Those attending will be able to visit Chinatown, Golden Gate Bridge, Sausalito/Muir Woods, Union Square, Golden Gate Park, Alcatraz and take the cable car to the world famous Fisherman's Wharf – just some of the attractions of San Francisco.

An exciting trip is in prospect and bookings with full payment must be received by November 30.

ITINERARY

Sunday, February 19

All participants assemble at the Excelsior Hotel, Heathrow Airport, overnight accommodation with free car parking included.

Monday, February 20

Depart Heathrow for San Francisco direct non-stop flight. Departure 1100 hours arrival 1500 hours. Transfer to the Holiday Inn, Union Square. Stay eight nights, room only basis.

Tuesday, February 28

Transfer back to airport. Depart San Francisco 1800 hours arrive Heathrow 1230 hours on March 1. Return transfer to Hotel to collect cars and drive home.

PRICES

£754.00 per person based on twin shares

£1,094.00 per person based on single room accommodation, plus comprehensive travel insurance for the duration £35.00

Included are: Overnight accommodation at Heathrow with car parking, return economy flights from Heathrow to San Francisco, UK and US taxes, transfers from the airport to the hotel and return, eight nights accommodation based on room only, US accommodation taxes.

Please forward full payment of £789.00 or £1,129.00 (unless travel insurance is not required) to BIGGA, Aldwark Manor, Aldwark, Ane, York, YO6 2NF to arrive by Wednesday, November 30 at the latest, together with name, address and contact telephone number.

Education update

BY KEN RICHARDSON



Secure your place at the Association's National Education Conference

Harrogate 1995

The National Education Conference and BTME Seminar Programme is now only four months away so make a note in your diary of the dates and get your place booked!

Included in this issue of *Greenkeeper International* are full details of the Education Conference and BTME seminar programme. A booking form is also enclosed and as always, please book early.

BIGGA Supervisory and Management Courses

There is still time to book a place on this year's BIGGA Supervisory and Management Courses. Week 1 is full but a few places remain on weeks 2, 3 and 4. If you wish to apply, phone me on 0347 838581.

N/SVQs

As I have highlighted in previous articles, BIGGA and the Greenkeepers Training Committee are determined that golf greenkeepers will be given nationally recognised qualifications for *all* formal training. The introduction of N/SVQs has meant a shift in emphasis from the traditional classroom based theory curriculum to a more work based learning and assessment system.

Colleges still have a major part to play in greenkeeper training as theory (or underpinning knowledge in NVQ speak) is still seen as an important part of courses, as is the teaching of the principles of greenkeeping practise.

However, for N/SVQs to be successful, employers and course managers/head greenkeepers need to become involved in the training and assessment of greenkeeping staff. The GTC expects employers to undertake to train greenkeepers and to allow course managers/head greenkeepers to become trained assessors. Regional seminars are being arranged to describe the structure, content and

philosophy of the N/SVQ system and the part that employers and course managers/head greenkeepers can play in making the scheme a success.

Any course manager/head greenkeeper wishing to register for an N/SVQ seminar should contact the GTC on 0347 838640.

TORO/Lely/PGA European Tour Student of the Year

After an arduous week of travel and interviews, the three members of the interview panel – Dean Cleaver, from the BIGGA board education sub-committee, Pete Mansfield from Lely and myself – chose six of the seven finalists for the National Finals of the TORO/Lely/PGA European Tour Student of the Year.

The seventh finalist was selected by our colleagues in Northern Ireland.

The final at Aldwark Manor will have taken place by the time you read this. An article appears on pages 10/11 giving potted histories of the seven finalists but we felt that all 33 entrants were winners to have reached the regional finals.

The standard of candidate was extremely high, which not only made our job very difficult but, more importantly, gave us a very encouraging look at the future of the greenkeeping profession. Congratulations to you all.

ICI Premier Greenkeeper of the Year

All 24 entrants for the ICI Premier Greenkeeper Award should now have received notification of the results of the first round course inspections.

The judges found it very difficult to select the winners in all five regions as the standard of course preparation was impressively high. Second round course inspections have been completed and the final takes place at Aldwark Manor on December 2 and 3.

£750-worth of prizes to be won in our BTME competition

★ It's a greenkeeper's dream holiday – and with this issue of *Greenkeeper International*, it could be YOURS!

An expenses-paid trip to the BIGGA Turf Management Exhibition, part of £750-worth of prizes, is being given away to three lucky readers. We will pay your rail fare. We will put you up in one of the best hotels in Harrogate and we will give you a free pass to the outstanding education seminar programme.

All you have to do to stand a chance of winning is answer six questions. Two were published in both the August and September magazines, which also contained the answers in amongst the BTME stories. Those four questions, plus two new ones for October, are printed below.

When you have the answers to all six questions, complete the form and return it to us by October 30, 1994. Good luck!
Usual rules apply.

★ **FIRST PRIZE** – Return rail travel from anywhere in the UK plus three nights' accommodation at a top hotel in Harrogate and entry to all the education seminar sessions

★ **SECOND PRIZE** – Return rail travel from anywhere in the UK, two nights' accommodation in a top Harrogate hotel and entry to all seminar sessions

★ **THIRD PRIZE** – One night's accommodation in a top Harrogate hotel and entry to all seminar sessions.

FINDING YOUR WAY TO HARROGATE
BY RAIL: 25 trains per day run from London King's Cross to Harrogate.
BY AIR: Leeds/Bradford Airport is 12 miles away and has direct flights from major European cities.



BY ROAD: From London – A1, exit Wetherby, nine miles from Harrogate. M1 and M62 to Leeds, which is 15 miles away.
BY SEA: North Sea Ferries, from Rotterdam/Zeebrugge to Hull, 60 miles away.

The best in Europe

Harrogate is set to host Europe's most interesting and comprehensive education programme for greenkeepers and golf course managers from January 23-27, 1995.

The week begins with BIGGA's two-day National Education Conference, where the emphasis will be on ecology, agronomy and irrigation. The speakers will include David Stubbs, executive director of the European Golf Association Ecology Unit, who will give "An overview of European golf course ecology". Also speaking will be the world renowned Dr James Beard, president of the International Sports Turf Institute and a professor in turfgrass science at Texas A&M University. His topic is "Benefits of turf grasses to environmental issues".

Other speakers at the conference include Bob Taylor, ecologist at the Sports Turf Research Institute (STRI), Neil Sinden, assistant secretary of the Council for the Protection of Rural England, and both Stig Persson and Hakan Eriksson of the Swedish Golf Federation. Greenkeepers sharing their experiences include Martin Smith of Ramsdale Park Golf Centre, Andy Campbell of Carden Park Golf Club, Michael Wattam of East Sussex National Golf Club, Billy McMillan of Wildwood Golf Club, Duncan McGilvray of Letchworth Golf Club, Joe Paulin of the London Golf Club and Geoff

Allinson of Patsull Park Golf Club.

The venue for the National Education Conference, January 23 and 24, is The Majestic Hotel, which is adjacent to the Harrogate International Centre and is one of Harrogate's premier hotels.

The week continues with the seminar programme which is run in conjunction with the BIGGA Turf Management Exhibition, Europe's premier fine turf trade show. A wide range of subjects will be covered by the talks in the Harrogate International Centre's Royal Hall.

the Learning experience

The seminar programme is designed so that visitors to the exhibition, now in its seventh year, can pick and choose the subjects that most interest them. And there's plenty to choose from.

Cameron Sinclair, chairman of the British Institute of Golf Course Architects, will give "A greenkeeper's guide to working with golf course architects". George Brown, course manager at Turnberry, will talk about the '94 Open. Colin Hegarty of the Golf Research Group will discuss 'Budgeting for golf course management'. Dr IG McKillop of the Central Science Laboratory will explain how to control

rabbit and vermin. Dr James Beard will make his second appearance, talking about international turfgrass trends and Douglas Shearer, a health and safety consultant, will give an update on this important aspect of course management.

"Considering the calibre of the experts delivering the lectures and seminars it's probably safe to say that the education on offer will not be surpassed anywhere in Europe during 1995," says BIGGA's education officer, Ken Richardson.

To help delegates unwind, there is also an interesting and varied social programme, including a dinner with a jazz band, a karaoke night at The Majestic and a banquet dinner with a cabaret starring comedian Tom O'Connor and female singer Lyn Paul (ex-New Seekers).

Full details of the National Education Conference and seminar programme are in "The Learning Experience", inserted with this issue.

● Only eight stands remain available for BTME '95 and so, with four months to go, the show looks certain to be a complete sell-out.

Recent companies to join are Interdrain Ltd, who have booked 20 square metres, Hi Speed Lubricants, HHI Electronics and Links Leisure.

At present, 124 exhibitors have booked for the show – a new record.

Now answer these questions, clip the coupon and send it in

August questions

● Which company doubled its stand space at BTME '94?

● Which association will take a stand at BTME '95 for the first time?

September questions

● What is the name of the course manager at Turnberry who will be speaking at the seminar programme in 1995?

● Which institute will be taking a stand at BTME '95 for the first time?

October questions

● What is the name of the company who has booked 20 square metres at the BTME '95?

● How many stands remain available?

Name:

Address:

Send your completed entry form to BTME Competition, Aldwark Manor, Aldwark, Alne, York YO6 2NF to be received by October 30. The first three correct entries opened after that date will win the prizes.



**INVEST IN QUALIFICATIONS NOW...
BANK ON SUCCESS IN THE FUTURE!**

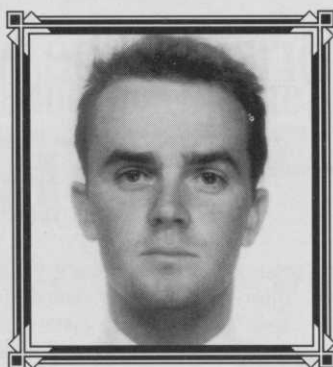
Expert staff, superb practical training facilities and an attractive environment make Reaseheath the best choice for YOUR training needs. Choose from a range of part time courses to suit your schedule:

- **GREENKEEPING** – NVQ Levels 2 and 3 (both as per GTC and IOG Training Manuals) – Day or Block Release
- **GREENKEEPING** – C&G Phase IV – Block Release
- **TURF CULTURE** – IOG National Intermediate Diploma and National Diploma – both on Day Release

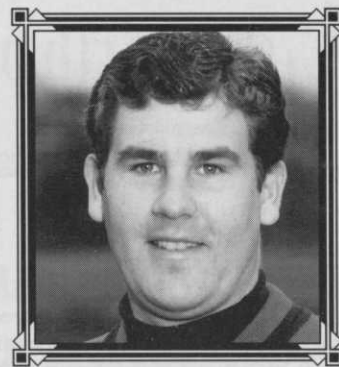
Full time courses are also available, including an HND in Golf Course Management, and Sports Turf Options on BTEC First and National Diplomas, and **Short Courses for Industry** include FEPA Chemical Safety, Chainsaws, Safe Lifting and Manual Handling, and First Aid.

Reaseheath College facilities include a nine-hole golf course, bowling green and outdoor sports pitches, and excellent residential and social facilities complete the package – so find out more by contacting Dennis Mortram or Geoff Brereton.

REASEHEATH COLLEGE, Nantwich, Cheshire CW5 6DF
Telephone: (0270) 625131 Fax: (0270) 625665



Euan Grant



Simon Heppenstall

HALL

EUAN GRANT

*representing South-East England
Age: 23. College: Plumpton*

Euan is a sports nut. He plays rugby union to a high standard, competes in marathons and plays golf off a 14 handicap. After graduating from the University of Leeds with a degree in sport and leisure management, he failed to find a job as a fitness instructor, which was their loss and green-keeping's gain.

Euan had gained some green-keeping experience during his university holidays, working under Dave Purvis at RAF North Luffenhan GC. He also had a temporary job at Tyrells Wood GC. Now he is assistant greenkeeper at Effingham Golf Club, Surrey, which encourages education. Euan has completed his City and Guilds phase II in greenkeeping and sports turf management and hopes to do phase III and/or the IoG Intermediate Diploma next year.

"My immediate aspirations are to become a deputy head greenkeeper or first assistant at one of the Surrey heathland championship courses. My long-term aspirations are to undertake a 'masters' degree in turf science either in England or America and become an agronomist to the European Tour or the PGA."

SIMON HEPPENSTALL

*representing Northern England
Age: 26. College: Askam Bryan*

Simon is from Huddersfield and works as the first assistant at Outlane Golf Club. He joined a few months ago after three and a half years as an assistant at Huddersfield Golf Club. Simon is now a

keen golfer. He only started playing two years ago but he is already down to a 10 handicap. He has represented his county at cricket and rugby but says "I now prefer to devote my spare time to golf."

He is qualified in NVQ levels I and II in greenkeeping, NPTC chainsaw competence and NPTC pesticides, handling and application.

"I feel that being promoted to a position of seniority in such a short period of time is a great achievement and I am hoping to commence the City & Guilds levels 3 and 4 management course soon. My aim is to become a head greenkeeper of a course in the near future," he says.

VINCENT LEE

*representing the Midlands
Age: 28. College: Warwickshire College*

Vincent has already proved himself a winner – at BIGGA's Midland section spring and summer tournaments. He plays off 18. He also plays football on Sundays.

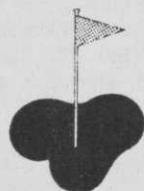
Married with two children, Vincent was recently appointed deputy course manager at Great Barr Golf Club. Previously he was an assistant at Sutton Coldfield Golf Club where he worked for nearly 10 years.

He has also recently completed his NVQ level 2 and aims to take the level 3 supervisory course next year.

KEN MOORE

*representing Northern Ireland
Age: 31. College: Greenmount College, Antrim*

Ken has been greenkeeping for 12 years. He has been at his present



**IRISH GOLF
GREENKEEPERS'
ASSOCIATION**

**SECOND TURF
MAINTENANCE
EXHIBITION**

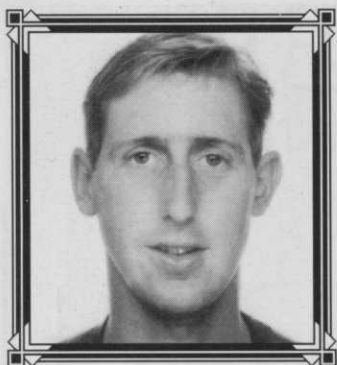
Last year's Fair, the first Irish Turf Maintenance Exhibition, was such a huge success with both exhibitors and buyers, that the IGGA is running it again this year. With a wider range of exhibitors showing more products and services, this year's Fair already outstrips last year's.

For further information contact the organisers.

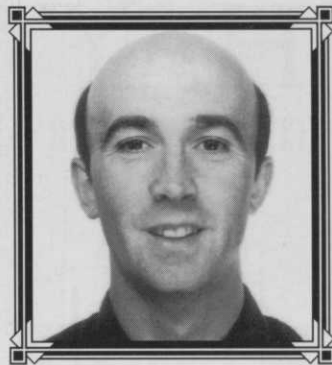
**3 and 4 NOVEMBER 1994
ROYAL DUBLIN SOCIETY, DUBLIN**

**Fairlink Ltd, 58 Clonard Court, Balbriggan,
Co Dublin, Ireland**

Tel: + 353 1 841 1362 Fax: + 353 1 841 2934



Vincent Lee



Ken Moore



Stephen Pellatt



Byron Thomas

OF FAME



Margeir Vilhjalmsson

WHO WILL BE THE TORO/PGA EUROPEAN TOUR STUDENT GREENKEEPER OF THE YEAR?

One of these young greenkeepers will win an eight weeks expenses paid trip to America. Two of them will join the PGA European Tour greenkeeping team and help prepare a course for a major event. The others can take comfort from the fact that they are the best student greenkeepers in their region.

All seven greenkeepers are already winners. Each has been picked to represent their region in the 1994 Toro-PGA European Tour Student Greenkeeper Awards after an extensive round of interviews.

During the summer 32 students, nominated by their colleges, were quizzed by Ken Richardson, BIGGA's education officer, Dean Cleaver, a member of BIGGA's education sub-committee and Pete Mansfield, general manager of Toro Lely UK. They clocked up more than 1500 miles as they interviewed the nominated student greenkeepers at colleges such as Oaklands, Cannington, Pencoed, Warwickshire, Askam Bryan, and Elmwood. Northern Ireland had its own selection process.

The upshot of all this is that seven superb students, representing Scotland, Wales, Ireland, Northern England, Midlands, South-East England and South-West England, will undergo further questioning in the National Final at Aldwark Manor in Yorkshire. And three of them will leave there with a "chance of a lifetime".

The overall winner will receive the Toro Scholarship which includes a six-week residential turf management study course at the University of Massachusetts in the USA in January/February 1995. There will also be visits to the Toro company's corporate headquarters in Minneapolis and the Toro Irrigation Division in California. And, if the schedules allow, time to visit the GCSAA's show in San Francisco. All expenses will be paid for by the sponsors.

The two runners-up will join the PGA European Tour greenkeeping team at two venues just prior to a major PGA event and will also be invited to attend the PGA European Tour's Greenkeeping Conference which is held every two years. The selected students will become working members of the PGA European Tour advance party, responsible for overseeing preparation prior to and during the tournaments. All expenses will be paid for by the sponsors.

We will announce the winner next issue, but which one would you vote for?

club, Shandon Park, for three years. His job title there is simply 'greenkeeper'. Ken, who is married, has also worked at Kirkistow and Knock golf clubs.

He plays golf but his best sport is autogress – he was the North-

ern Ireland champion last year.

To back up his practical knowledge he has been taking a two-year day release course in greenkeeping and sports turf management (NVQ II) at Greenmount and has qualified for the

Certificate in Greenkeeping from the GTC.

"I will now study for the level II supervision qualification at Greenmount to become assistant course manager at my present club," he tells us. "My ambition is to be a course manager if possible with the opportunity to help in the design and construction of a new course."

STEPHEN PELLATT

representing South-West England

Age: 30. College: Sparsholt

After leaving school Stephen served a four-year coppersmith's apprenticeship followed by another year "on my tools". Stephen, who is now married with two children, then became involved with turf while working as an assistant groundsman on a naval base. He worked there for two years, maintaining the grounds and the sports pitches.

"After a financially motivated spell in the building industry," he continues, "I joined Lee-on-Solent golf club as an assistant." Two years ago he was promoted to assistant head greenkeeper.

"I now have a career which provides me with enormous job and personal satisfaction. I aim to continue my education and broaden my experience on the way to becoming a successful head greenkeeper."

He has completed phase I of City and Guilds, is taking phase II and plans to take phase III afterwards.

BYRON THOMAS

representing Wales

Age: 20. College: Pencoed

Byron is the first assistant at Morlais Castle Golf Club near Merthyr Tydfil. After finishing school in July 1990, he started at Pencoed the following September and went to Morlais Castle for work experience as an apprentice. He has now trained there for three years and even took over from the head greenkeeper, Peter Lewis, when he was injured "in the line of duty".

At Pencoed Byron has completed phase I and II of the City and Guilds greenkeeping and sports turf management.

MARGEIR VILHJALMSSON

representing Scotland

Age: 22. College: Elmwood

Although Margeir is representing Scotland, as you can probably tell from the name, he is not Scottish. He comes from Iceland and took out a bank loan to go to Elmwood to learn about greenkeeping.

At the moment Margeir is working at Gleneagles on their Excellence in Golf Award Scheme. He has also had some work experience at Carnoustie. A keen golfer, he was the junior champion at Sudurnesja GC in 1987 and 1989 but now he plays off 12. "Greenkeeping has very much interfered with golf playing in recent years," he admits. As well as being a champion in Iceland, he also rose to the position of deputy head greenkeeper before coming to Britain to study. Margeir completed his national certificate in greenkeeping with ease and he is undertaking the HNC in golf course management by distance learning. He should complete this next year.

HAYTER

CHALLENGE TOURNAMENT FINAL

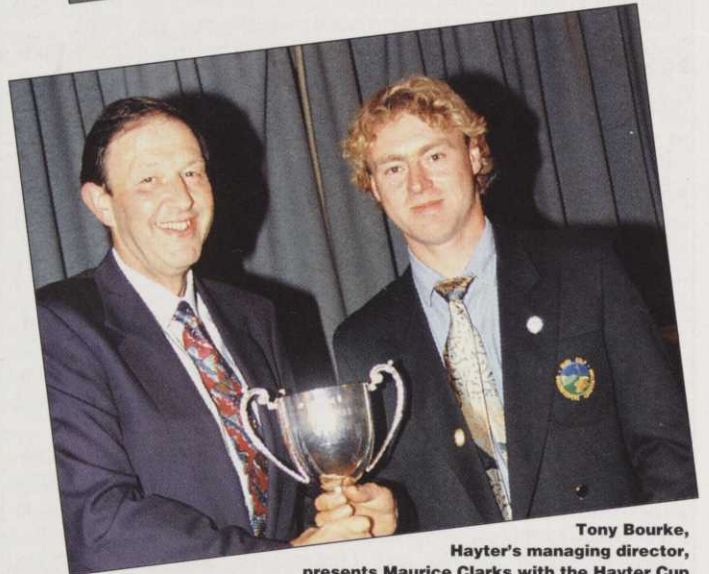
Pannal



Caddy reflects on boss's shot



The winning Northern team



Tony Bourke, Hayter's managing director, presents Maurice Clarks with the Hayter Cup



Kim Macfie, Hayter's sales and marketing manager, shows how it's done

beaters



Kevin Fowler, putting on 17th

David Spurden keeps his eye on the ball



Tommy Clarke, the over 55s winner



Maurice Clarke celebrated his victory in the Hayter Challenge Tournament final by scraping off his goatee beard. But his success at picturesque Pannal was anything but a close shave.

The 31-year-old 14-handicapper was one of three golfers who shot a nett 67 in the morning of this 27-hole competition. But the others couldn't keep up the pace in the afternoon and Maurice, the first assistant at Corrstown GC, near Dublin Airport, won by more than a whisker. A 20ft chip-in on the 5th followed by another birdie on the 7th gave him a gross score of 39 and a nett score of 32 in afternoon.

**Report and photographs
by Chris Boiling**

One of his co-leaders in the morning was his 61-year-old father, Tommy, the head greenkeeper at Corrstown, who was playing just in front of Maurice. "I had the added incentive that I wanted to beat the old man," said Maurice.

Tommy, a 12-handicap player, started the afternoon in superb fashion – with a birdie. "But I got so excited I went to pieces," he said jokingly.

The other morning leader, Steve Milne, a 21-year-old assistant at Exeter Golf Club, didn't go to pieces but still finished two shots adrift of Maurice with a nett 34 off a 24 handicap. Like Maurice, Steve had someone in his family to thank for his success: his 29-year-old brother is a pro. "He set me on the right track," says Steve, who has been playing for two years and has had about eight lessons.

How your team performed:

NORTHERN 885
MIDLAND 906
SOUTH WEST AND WALES 910.5
SCOTTISH 914
EIRE 917.5
NORTHERN IRELAND 946.5
SOUTH EAST 950

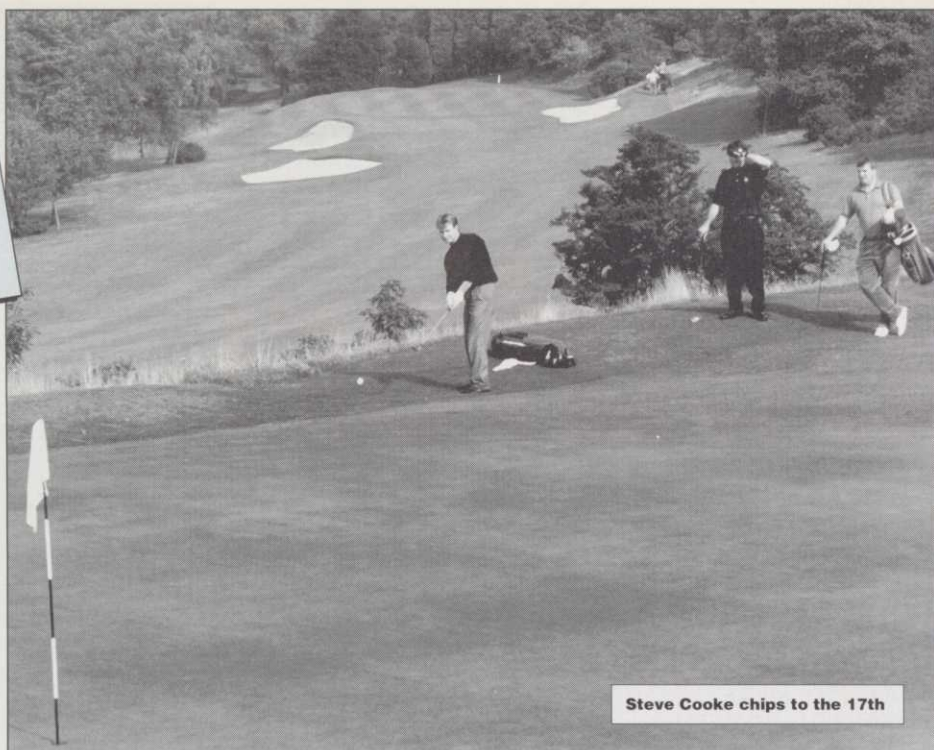
HAYTER

Several other golfers went round the 6659-yard par 72 course in sixtysomething in the morning. Paul Godwin and Mike O'Neill shot nett 68s, and Kevin Peace came in with a nett 69. But, after a quick lunch, this tiring course took its toll and they all slipped back in the afternoon.

Those who came good second time around the first nine were Graeme MacDonald, who added a nett 33.5 to a nett 72, John Moorhouse who added a 33 to a 72, Joe Bedford who added a 33.5 to a 79 and Alan Baxter who recorded a 32 after a morning 73.

However, the Hayter Challenge Tournament, now in its second year, is about more than individual scores. The pride of the regions is at stake. And once again the Northern team have something to gloat about.

"The sun shone again for the righteous," said regional administrator Bob Lupton who picked up the team trophy and a cheque. The winning team comprised: Tony Mears, Ian Hutton, Gary Potter, Alan Baxter, John Waite, David Spurden, Chris Powley, Chris Fiddell and John Jones. The runners-up again were the Midlands team, led by Roger Willars, the only playing captain in the competition. He says he stepped in to save the team's honour when a qualifier cried off and the reserves were unavailable.



Steve Cooke chips to the 17th

They don't know what they missed. Even those greenkeepers who didn't win a prize said they had enjoyed the day, the course and Pannal's hospitality. Most said they enjoyed it so much that they are going to try harder next year to make it through their section and region qualifying rounds to get to the final. Roger Willars has already booked his accommodation!

Verdict on the course

The winner, Maurice Clarke, spoke for everyone when he said: "The course was excellent and the greens were in great condition. The course is not too difficult, but you can get in trouble if you don't keep the ball straight". Head greenkeeper Kevin Wroe, who took over recently from Alan Gamble, and his team did a superb job with the presentation of the course.

Results

Overall winner: Maurice Clarke (Eire), 99

Regional team prize: 1, Northern, 885; 2, Midlands, 906

Category 1 (0-9 handicap): 1, John Moorhouse (Midland), 105; 2, Graeme MacDonald (Midland), 105.5; 3, Paul Godwin (SW/SW), 105.5.

Category 2 (10-18): 1, Maurice Clarke (Eire), 99; 2, Alan Baxter (Northern); 3, Tommy Clarke (Eire), 106.

Category 3 (19-28): 1, Steve Milne (SW/SW), 101; 2, Chris Powley (Northern), 109; 3, Alex Robertson (Scotland), 111.5.

Over 55s: Tommy Clarke (Eire), 106.

Under 21: Steve Milne (SW/SW), 101

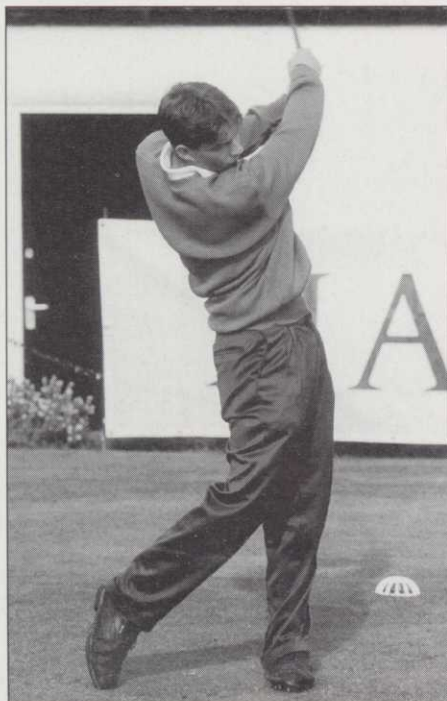
Best Gross: Ron Christie (SE), 112

Nearest the pin: David Behan (Eire), 5ft 11in

Longest drive: Ron Christie (SE)



John Moorhouse



Steve Milne



Tony Mears

Send your letters to The Editor, Greenkeeper International, Aldwark Manor, Aldwark, Aline, York YO6 2NF or fax them on 0347 838864

How to extend the battery life of your electric mower

I have read your article on the new Ransomes E-Plex triple greens mower in the September issue with interest mainly because it is powered electrically. Although this is a very obvious statement, I am a sales engineer for a very known lawnmower grinding machine manufacturer, and we, as a company, vigorously promote the single blade grinding method of sharpening cylinders, or as it is more commonly known 'relief angle grinding'.

With the launch of the Ransomes E-Plex machine, we feel it would be an opportunity to tell prospective buyers of the mower about some very distinct advantages of 'relief angle grinding' as this will give much longer battery life on the E-Plex mower and as a result will extend the life of the batteries and obtain more 'charges' than 350 as stated in the article. Allow me to explain in a little more detail the advantages of this method of grinding cylinders with a relief angle.

1. There is less friction between cylinder and bottom blade.
2. Longer blade life - both reels and bedknives can last up to 2-3 times longer.
3. Motors, gears, transmissions and all other moving parts last longer due to less friction
4. Adjustments, reels to bedknives (or vice-versa), due to less wear, are less frequent.
5. Dry summers and the lack of moisture in the grass to lubricate the cutting action leads to rapid wear of the blades. Relief grinding of the cutting cylinder is the cure to this and other associated overheating problems.
6. The cleaner cutting action means that mowing can take place in very wet conditions without

tearing, ribbing or skidding of heavily set (tight) mowing machines.

So greenkeepers, if you are seriously contemplating purchasing one of the above machines or any other make and wish to keep your costs down even further, consider the above method of grinding.

Peter Barrow
Southern UK sales engineer,
Eric Hunter Grinders Ltd,
Portsmouth

Teenager with taste

I have recently come into possession of some old issues of your magazine. This is a fantastic publication and I just cannot put it down. Can I subscribe or is there any way for me to purchase it regularly?

I will be 17 in February and I want to become a greenkeeper.

Alan O'Connor
Enniscorthy, Co Wexford, Eire
Editor's note: The subscription rate for non-BIGGA members is £34 per year, £44 if you live outside the UK.

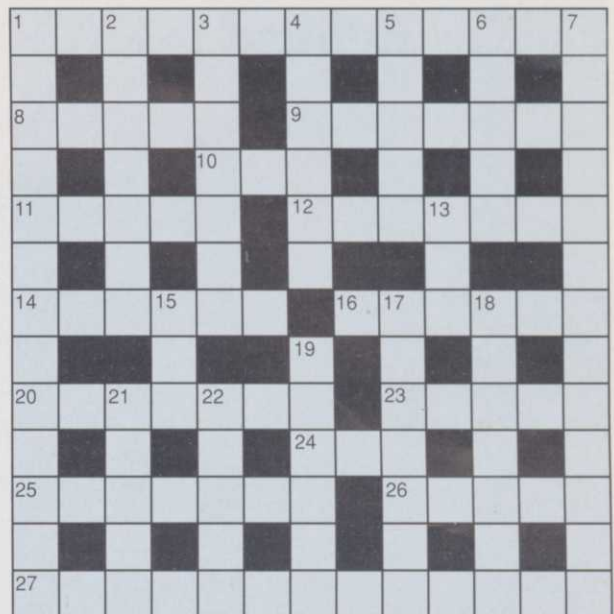
A great time

To the executive director,
Just a short letter to thank you and the BIGGA team for running the Open support team and the National Tournament so well. It was a great two weeks for me, which would not have been possible without the hard work that went into setting up these events and running them so professionally.

John Wells
course manager, Brocket Hall Golf Club, Welwyn, Hertfordshire

GREENKEEPER'S CROSSWORD

Compiled by Mark G Smith



WIN A BIGGA BLAZER OR £50 IN CASH!

CLUES ACROSS

- 1 Term given to the situation where a ball is accidentally deflected or stopped by an outside agency (Rule 19-1) (3, 2, 3, 5)
- 8 Period in which a series of events is completed, eg plant growth, engine operation etc. (5)
- 9 Competitive inter-club matches are often played in them (7)
- 10 Alternative name for a newt (3)
- 11 Blunt nosed short eared rodents some of which are aquatic (5)
- 12Fields C.C., Illinois, venue of the USPGA Championship in 1925 (7)
- 14 What a golfer may ask of an opponent's stroke played out of turn in match play (6)
- 16 Situation on the putting green where an opponent's ball blocks the way to the hole, nowadays remedied by marking (6)
- 20 An item of golf apparel (7)
- 23 What a player's and a marker's card should do before signing! (5)
- 24 Make a mistake (3)
- 25 Andrew winner of the 1993 Turespana Masters Open De Andalucia (7)
- 26 A spring of water (5)
- 27 Golfer with a zero handicap (7, 6)

CLUES DOWN

- 1 Strokes played from hazards etc (8, 5)
- 2 To sharpen mower blades using grinding paste (4-3)
- 3 (L.Refracta) Deciduous bulbous plant of the Iris family (7)
- 4 Surname of the only British amateur to win the Open Championship twice in 1892 and 1897 (6)
- 5 Surname of the Australian winner of the 1990 USPGA Championship (5)
- 6 Provide with tools, clubs etc (5)
- 7 Explanation of why a Flymo is at its greatest height of cut (2, 5, 7)
- 13 Month in which the Volvo PGA Championship is played (3)
- 15 Open country or meadow (3)
- 17 Emotional state experienced by some tournament winners breaking fat rule (anag) (7)
- 18 Dog's(L. Chenopodium Bonus Henricus) poisonous weed, or metal (atomic number 80) (7)
- 19 Open Championship played at the National Golf Club and won in 1993 by Costantino Rocca (6)
- 21 Common name of the tree (L. Sambucus Nigra), renowned for its black berries (5)
- 22 Fish of the salmon family (L. Salmo Fario) (5)

★ Solve the crossword puzzle and you could win either a BIGGA blazer (worth £87.95) or £50 in cash! Send entries to: Crossword Competition, Greenkeeper International, Aldwark Manor, Aldwark, Aline, York YO6 2NF.

Closing date October 30, 1994. First correct entry drawn after the closing date will win the prize. Photocopy your entry if you don't want to cut up your magazine. ➔ Last month's solution:



Name:

Address:

.....

.....

If I'm the winner, please send me £50 cash or BIGGA blazer, size

Greenkeeper is bound for Portugal

Callander Golf Club's W Myles has won a golfing holiday for two to Portugal in the Ocmis Irrigation survey prize draw. Ian Semple of Old Fold Manor GC won the second prize of two tickets to the Toyota World Match Play Championship. Twenty other head greenkeepers who completed the Ocmis survey will receive bottles of Somerset Royal Brandy.



THE WORD IS SPREADING



Since the first SISIS top dresser was launched in the 1950s the name SISIS has spread throughout the UK and around the world.

Tractor mounted, independently powered or hand operated we have the right machine for every requirement, each offering a wide range of application rates, precise setting and hopper capacities up to 1.8 cu.m.

For full details of the SISIS range of top dressers write to:

SISIS EQUIPMENT (Macclesfield) LTD:, Hurdsfield, Macclesfield, Cheshire SK10 2LZ. Tel: 0625-503030 Fax: 427426
SISIS Centre In Scotland: The Roundel, Middlefield Ind. Estate, Falkirk FK2 9HG. Tel: 0324-629635 Fax: 0324-632894
SISIS Centre In USA: SISIS Inc, Florida

"All SISIS machines are designed, patented and manufactured in Gt. Britain"

sisis

DRAINAGE

Michael Bird examines some of the options open to greenkeepers who are searching for solutions for drainage problems

Effective drainage is an essential requirement for all playing surfaces. An inability for water to keep moving either sideways or downwards can swiftly reduce superb turf to a mudbath, causing a series of knock-on effects which can be extremely costly to rectify.

Poor turf drainage not only limits water percolation, it also hinders the passage of air and warmth through the soil to the roots, restricting strong and healthy plant growth.

Prevention, as in so many other cases, is always better than the cure. However, the ability to carry out and maintain effective drainage is within the reach and means of most clubs. This can be achieved either by employing a professional sports turf drainage contractor or by using their own equipment, hired in or purchased for the job.

In many situations, it will pay to have one's major drainage works carried out using purpose-built drainage machinery equipped with laser guided levelling equipment to ensure that the pipe gradients are correct within both flat and undulating ground.

This requirement is not so demanding beneath turf which has a consistent slope in one direction or another, the aim being to drain to the lowest possible level, keeping water on the move using the lie of the land.

Whatever one's circumstances, there will always be occasions when additional drainage is needed or there is a need for rectification, maintenance or improvements to existing installations. For these jobs, greenkeepers can call on a growing range of equipment suitable for use by the "do-it-yourselfer".

Shelton Trenching Systems claims to be Europe's leading spe-



Top picture: muddy puddles at Newmacher Golf Club before drainage problems were solved. Above: the course as it looks today

Drainage problems at Newmacher Golf Club in Aberdeenshire started eight or nine years ago in the areas where heavy plant had been at work. With the resultant compaction, water just lay on the top.

All the problem areas were sorted with a 100m main drain down the centre and 80m laterals every 3-4m into nearby ditches. Drains were excavated with a Kubota digger.

Pipes were backfilled within 6in from the top with 10/5mm washed gravel then 4in of 5/2mm washed grit and then 2in root zone sand. For deeper drains they used 10/20mm gravel.

cialist manufacturer of sports turf drainage equipment, producing a series of high quality, effective products over the past decade.

The company's Supertrencher Mk Va is designed for high daily workrates cutting pipe trenches from 25mm to 135mm (1in to 5.3in) wide. Features include a longer conveyor than previous models allowing the use of larger trailers to remove the soil. Chain

driven, the conveyor has a chevron belt, the speed of which can be adjusted hydraulically.

Other enhancements include the lowering and enlarging of the soil exit port and the fitting of a stainless steel deflector plate. Together they are said to provide greatly improved soil flow for faster working.

Options on the trencher are laser levelling and a mini gravel

hopper to allow simultaneous backfilling. Designed for tractors of 75 to 90hp/ the Supertrencher Mk Va costs £9,350. It can be specified with segmented cutters with quick-change tungsten carbide tipped cutter heads.

For those preferring a trenchless system, Shelton's gravel band drainage machines can instal two 20mm (0.78in) bands of material 400mm (15.75in) apart in one

DRAINAGE

pass at depths down to 250mm (10in).

Rather than utilise gravel or sand, Shelton recommends 3mm Lytag because of its excellent hydraulic conductivity.

Presser wheels minimise surface heave allowing the turf to be returned immediately to play while the introduction of stainless steel channel openers has enabled the use of tractors of 50hp-plus, with four wheel drive advised in wet conditions.

Available on hire at £185 per day (minimum three days) or for outright purchase from £7,895, Shelton Gravel Band Drainers come in three models, one of which permits the fitting of self-loading equipment on the tractor's three-point linkage.

The company has also introduced recently a range of turf drainage equipment suitable for use with compact tractors.

Perthshire farmer, Jimmy Gilchrist, has been producing the Daisy D Drainer since the early

1980s. Comprising a simple, single leg trenchless unit, it is suitable for mounting on tractors of 75hp-plus, depending on ground conditions and drainage depth.

Versions suitable for laying 80mm or 100mm pipe down to a maximum depth of 914mm (3ft) are available and the hopper has a shutter to regulate depth of backfill.

'As a trencher, the machine is compact, self-contained and highly manoeuvrable'

Available within the Daisy D contract drainage service or for purchase at £2,600, the Daisy D Drainer can be equipped with laser levelling if required.

One multi-purpose machine which is proving its costeffectiveness on a range of jobs for landscapers, contractors, groundstaff and others is the Skidster, fitted with either a petrol or diesel

engine.

Comprising a base skid-steered power unit with a rear stand-on operating platform, the machine can be equipped with a host of attachments for work on hard and turf surfaces.

For drainage works, the machine can be had with a chain trencher, front hoe excavator and bucket loader, each designed to give the Skidster the abilities of a single, specialised unit.

As a trencher, the machine is compact, self-contained and highly manoeuvrable capable of digging a 914mm (3ft) deep trench at 100mm or 150mm (4in or 6in) widths. A crumbler attachment is available and there is also the option of full crawler rubber tracks to minimise disturbance of soft surfaces.

Equipped with a bucket, the machine offers a maximum 2m (6.5ft) lift height. Offered with a variety of tyre options to suit the surface, Skidster prices start from less than £7,000.

Bigger drainage works demand bigger machines and Foster has a range of heavy-duty diggers suitable for fitting to most tractors from 35hp upwards.

The company's D2 and D2P diggers connect direct to the three-point linkage and have twin ram 180deg slewing. Because of its offset facility, the Foster D3 model is attached to the tractor using a load-bearing sub-frame.

Major difference between the D2 and D2P is the use of an independent hydraulic system on the latter. Both machines have a maximum reach of 4.37m (14ft 4in), digging depth of 3m (9ft 10in) and tear out force of 2.9 tonnes (6,350lb).

The D3's arm can be offset to any position along its frame enabling work close to walls and fences. Sideways reach is a massive 5.18m (17ft).

Offered with a choice of ditching, trenching and drainage buckets, the latter with ejector, Foster diggers cost from £3,500.

DIGGERS

FOSTER

and Grabs



D2 complete with Tractor Fittings

£3,500 RETAIL

Foster are renowned for their solid construction and reliability. Easy fitting to any tractor in a few minutes. Independent hydraulic legs give rigidity to maximum digging penetration. Three models to choose from.

For further details and the name of your stocking dealer contact

FOSTER SALES COMPANY

Annie Reed Road, Grovehill Industrial Estate, Beverley, East Yorkshire HU17 0LF

Telephone: (0482) 868800 Fax: (0482) 861331

PRICE BUSTER



GRAVEL AND SAND BANDING FOR INTENSIVE SPORTS TURF DRAINAGE

FROM

7p

per METRE

with the **NEW**

SHELTON GRAVEL BAND DRAINER AND SAND GROOVING

SHELTON TRENCHING SYSTEMS

TEL: 0507 578288 FOR MORE DETAILS

EUROPE'S LEADING MANUFACTURER OF SPORTS TURF DRAINAGE EQUIPMENT

We went back to basics with the first golf club in East Germany

British greenkeepers Stuart Bishop and his partner Elaine Holland, a trained hairdresser who now cuts greens and fairways and mends machinery with the best of them, have been telling us about their experiences at Potsdam Golf Club, the first golf club in East Germany.

When they arrived in the east of the country after 18 months in the west, Stuart was surprised to find that it took the greenkeepers just eight hours to cut 18 fairways and the driving range with one machine. Asked how they did this, they demonstrated: the driver proceeded to cut the driving range at about 35mph with a 6-ton tractor followed by a flying set of gang mowers. Later, a close examination of the gang mowers revealed no set on (and they'd never heard of this).

The equipment at the course was mainly farming implements of which the 6-ton Russian tractor was their favourite. It was used to cut the fairways and semi-rough – well, almost everything. One problem was that the course was built on a swamp and the tractor kept sinking and making large holes. The answer? Fill the holes with sand and create another bunker!

They had tried to update their inventory with an electric Flymo – but it had to be returned when they couldn't find a long enough cable in East Germany to go around the course. Parts would take 3-4 weeks to arrive from the west. In the event that some-

thing arrived the same day, the staff would break it or insist it didn't fit!

One day the owner decided he wanted the fairways top-dressed. Stuart didn't know this until the top-dresser arrived – a farm manure spreader that discharged out of the rear by a conveyor belt with two bars with flailing rods on them. So going up hill it discharged at a rate of 1 ton per square metre and going down hill, nothing. Stuart and Elaine were assured by the greenkeepers that this was normal practice. Only when Stuart insisted that they all get a shovel and rake to smooth out the 2ft hills did they all remember they had doctor's appointments.

The arrival of a Jacobsen Turf Cat was similar to Unification Day. Suddenly everyone wanted to cut the semi-rough.

The Easteners are very easy going, so it wasn't a complete surprise to Stuart when the day before a big skins game featuring Bernard Langer and David Gilford that one greenkeeper had a day off for shopping plus a visit to the hairdresser's.

The mechanic had spent most of his time working on Russian tractors, which required nothing more than a huge hammer and a 42mm spanner, so when Stuart asked him to adjust the bit of play in the groomers he did just that – he welded the groomers to the frame of the mower, in the down position. Just the job for rotorvating the greens, which brings us to verti-cutting.

"They would normally rotor-

vate the greens because they were set so low and always finishing with twice around the green (as mowing) and once around the foregreen while decapitating any sprinklers in their path," recalls Elaine.

As a rule the greenkeepers were rewarded with a party given by the course owner or with presents of beer – and plenty of it. Stuart, a teetotaler, therefore was not the most popular man in Germany when he banned alcohol from the course.

'This man turned out to be our worst nightmare'

Most of the German greenkeepers are really farmers by profession, so Stuart and Elaine were delighted when their boss told them they were to get a new man with three years' experience. Their smiles turned to laughter when they found out his name was Herr Shiverdick. Their laughter turned to horror soon after he arrived. "This man turned out to be our worst nightmare," said Elaine. "Within two or three days the 6-ton tractor was in one of the streams complete with gang mowers and driver. This was after he had severed a high-pressure stand-pipe, which produced a 100m fountain. Every day there was some kind of catastrophe, but it was good for the others. It made them look competent!"

The mechanic did his fair share of wrecking, too. In the

shed was a reel grinder, two years old and never used as no-one had any idea what it was. Stuart removed the polythene and taught the mechanic how to use it, giving detailed instruction and demonstrations about what could go wrong. The mechanic appeared to have got the idea, so Stuart left him to it. An hour later Stuart returned expecting to see at least one finished. He was a little surprised to see all seven fairway reels finished – with a 5mm convex shape to them!

In Germany they like to apply quartz sand as topdressing, and a lot of it. Stuart decided he would mix soil and sand, which they did by throwing sand and soil in a small cement mixer, mixing it, then tipping it out and throwing it through a fine mesh screen with a shovel. What went through was used, what didn't was scrapped. "When you require 40 or 50 tons this procedure could take about six months," said Stuart. "Germany has not heard of power screens."

Stuart and Elaine have now left that club – "We both felt we had to leave for the sake of our own sanity," said Elaine. "But we hope we have left quite a bit of knowledge and know-how there. At least we know they'll be cutting the grass, not running over it at 35mph."

She adds: "It was a lot of fun and we met some very nice people. The staff are all now competent greenkeepers. It was a joy to work with them and we learnt a lot about life behind The Wall."

Summer madness hits St Enodoc

Picturesque St Enodoc Golf Club in Cornwall has been hit by a spell of summer madness.

One night 10 flags, six tee markers and six boards screwed to stone tee boxes disappeared and five greens were damaged. The vandals had made the holes about 18in in diameter by gouging them out with their hands. They also gouged other holes in the greens as well.

A security guard was brought in, but this did not stop the vandalism. A mini-Stonehenge was built on the 11th green using 6in wooden tee blocks from various

tees. Rakes were put in the holes and flags were planted in bunkers. Stones along a footpath were thrown in bushes.

While the security guard was throwing someone off one part of the course holidaymakers from nearby caravan sites were letting rip on the other side of the links. A second security guard with a dog was employed and, according to head greenkeeper Stuart Dymond, this seems to have worked.

There was no more damage during the summer holidays although the guards' daily reports

to the club showed that every night they escorted someone off the course.

Sticker winner

The winner of our recent sticker slogan competition is Mrs JR Whatling, wife of the head greenkeeper at Heworth Golf Club, York. She receives a £15 WH Smith voucher for her effort: *BIGGA greenkeepers – a cut above the rest*. One slogan that was rejected by the girls at HQ, due to lack of proof, stated: *Greenkeepers do it with BIGGA ones!*

NEW FACES

■ The new head greenkeeper at Brickendon Grange Golf and Country Club, a picturesque parkland course near Hertford, is Trevor Booth, 32. Previously he was head greenkeeper at Oakridge, Nuneaton. He replaces Mike Reece who has gone to King's Norton in Birmingham.

■ Bob Lawton, 39, has moved from South Shields GC, where he was head greenkeeper, to take over as course manager at Billingham GC, Cleveland. Harry Lees has gone to Ramside Hall.

Designed by Rees Jones to championship standards, the Oxfordshire Golf Course is the second Nitto Kogyo course in the UK (the first being Turnberry) and the first they have built outside Japan.

The architect's design philosophy is quoted as "to create an environment for the game of golf that is challenging, fair and aesthetically pleasing," while Nitto Albion plc, the UK operator, gives its objective as "to meet the cultural and business needs of Britain and Japan and form a bridge between the Japanese and British people and corporations."

Opened on July 4 1993 at an estimated cost of £22 million, the Oxfordshire is a 7187 yard par 72 course with sufficient options to tax golfers at all levels and an exceptionally well appointed clubhouse. Membership is by debenture, with a seven day debenture costing £26,000.

However these statistics are only part of the impressive credentials of the course.

Built on 250 acres of gently sloping ex-farmland just outside Thame and overlooking the Thame valley, the course is officially described as a modern American style parkland course. Course manager Martin Jones suggests that "inland links" is perhaps more accurate and gives a better indication of the design which is extensively landscaped.

Contours give additional interest, both visually and to play, and also ensures that all (rain) water is rapidly shed to drains. Martin is very proud of this, stating categorically: "we don't have puddles - if I saw a puddle during construction it was a cock-up - and notifiable." Of course there has been some minor settlement since, but he added, "rectifi-

Big time here we come

Hugh Tilley explores the ambitious Oxfordshire Golf Course where puddles are a major crime in the pursuit of championship status. Pictured right: the 14th hole

cation has been quick and simple."

The basic layout is two loops of 9 running out from the clubhouse, and a driving range. Part of the brief was that the Oxfordshire should have championship potential - and this justified using the highest specifications.

I suspect that the requirements of spectators and media were also fully considered during the planning because there are some very exceptional vantage points and such detailed

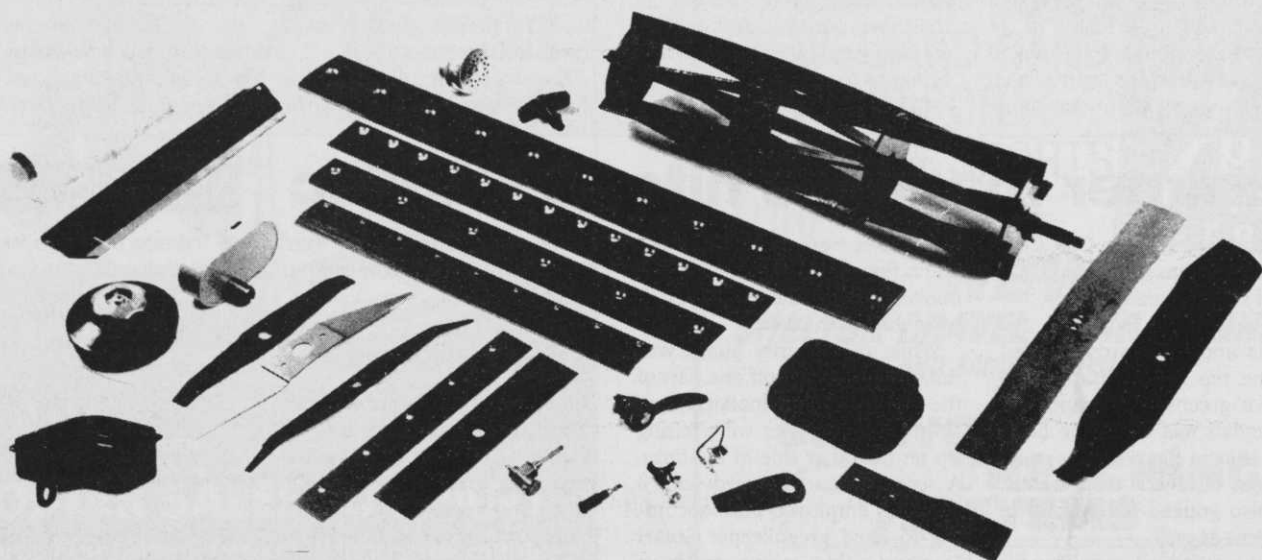
thinking and foresight appears to be a hallmark of this course architect.

The clubhouse, nearly 40,000 square feet of it, is positioned on the high ground with a commanding view of the course. Its design claims to be based on traditional 19th century English architecture but with a luxury interior built to suit individual guest and corporate hospitality. I have to admit to being overawed by it.

Mower Accessories Ltd

65 FORNCETT STREET
SHEFFIELD S4 7QG

MANUFACTURERS OF LAWNMOWER BLADES *and Cutting Cylinders*
SUPPLIERS OF LAWNMOWER SPARES & ACCESSORIES

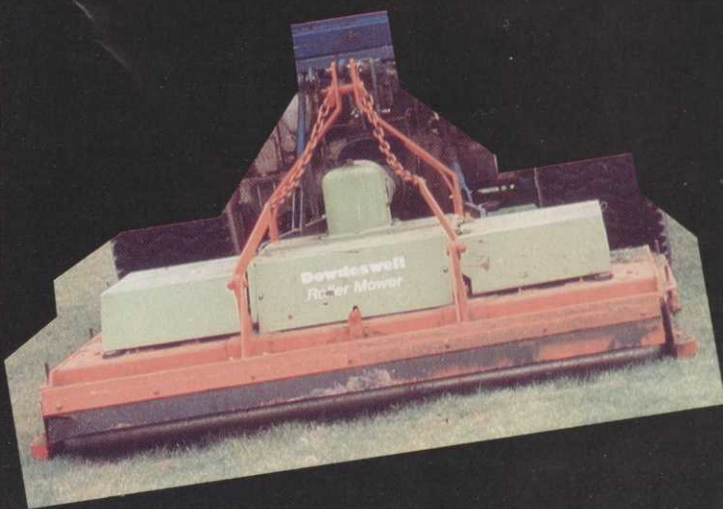


FOR ALL YOUR BLADES AND SPARES PHONE 0742 765825



Dowdeswell

Rollermower



The best of British design and build for use in areas where a high standard of finish is required.

- Cutting widths of 183cm (72in) and 233cm (92in) with cutting height from 9cm (3.5in) to 1.3cm (0.5in).
- Fully enclosed cutting chamber for safe use in public areas.
- Front and rear rollers with floating top mast allow the mower to follow undulations and avoid scalping.
- Multi-cut grass clippings uniformly discharge across full cutting width.
- Forward and reverse cutting speeds up to 8mph.
- Low maintenance drive and cutting system for reduced downtime and cost.

Dowdeswell's award winning engineering - offers you the best of British

Dowdeswell Engineering Co. Ltd.,

Blue Lias Works, Stockton, Nr. Rugby, Warwickshire CV23 8LD

Telephone: (0926) 812335, Fax: (0926) 817494

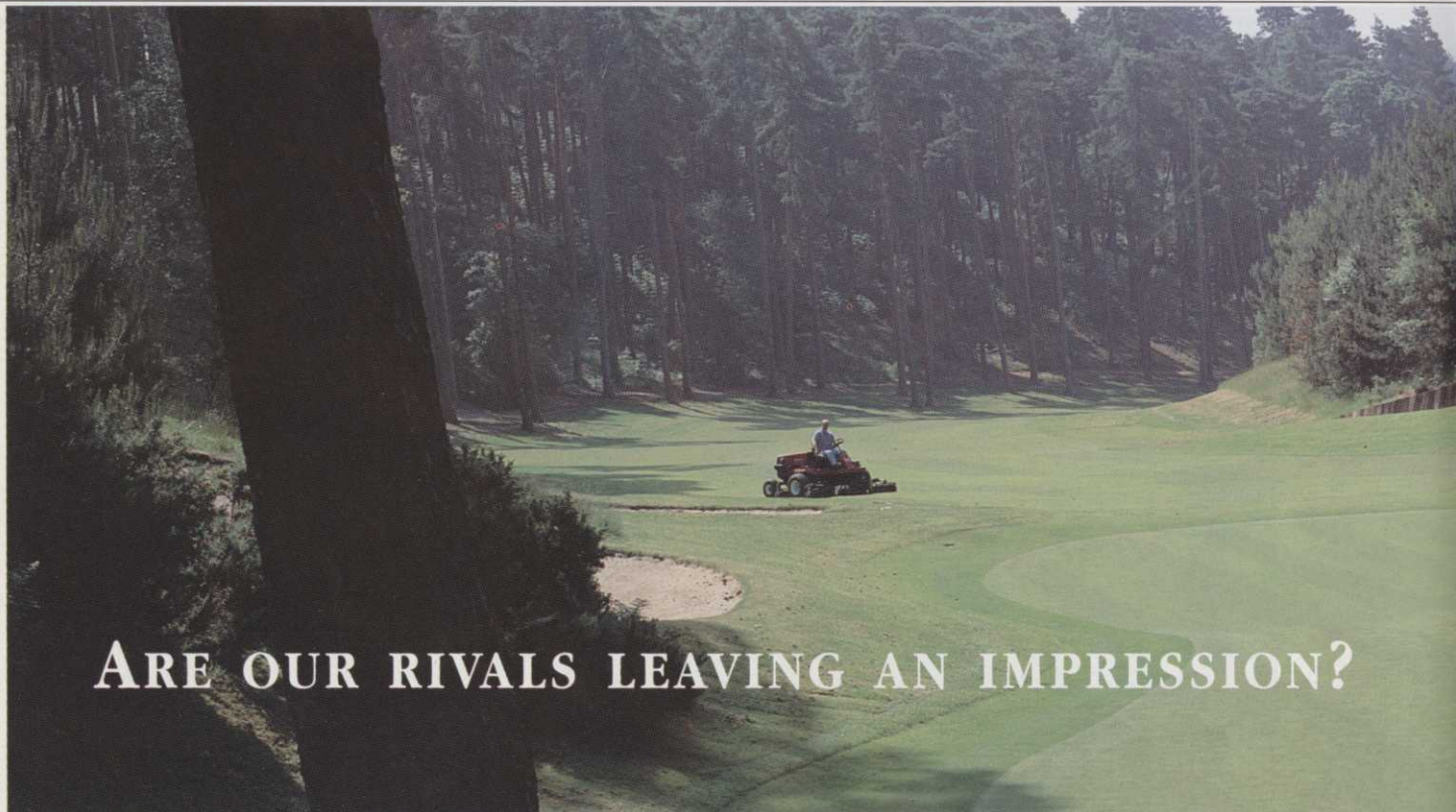
AD
REF
450

Big time here we come

As could be expected, the ground was previously poor farmland on difficult soil with considerable clay – hence, perhaps, its availability.

There was a field structure with hedges and a number of mature trees, mostly oaks, some of these had obvious potential as ‘features’ and have been retained, with the course built around them. In fact the landscaping has enhanced them so that they are now vital to their surrounds, both from the golf point of view and visually. Their new-found importance led Martin to consider schemes to protect some of them, and in particular to protect them against lightning. Unfortunately such protection is very expensive involving multiple electrodes and conductors, and in addition there is the dilemma, as Martin observed, “just which trees do you protect? You can be certain if a tree is hit it won’t be one which has been protected.” As a result, to date no trees have actually been protected.

No less important to the course is the water. This is used extensively with four separate ponds and lakes providing the most challenging of hazards, although most of the six holes driven over water do offer a dry route for the faint hearted.



ARE OUR RIVALS LEAVING AN IMPRESSION?

There'll be no tell-tale impressions left when these greenkeepers have finished. Just precision-cut, immaculate greens with the minimum turf compaction or damage. They know they can rely on the Greensmaster 3000 Series for the

lightest and quietest of rides, giving a consistent, smooth cut with the mower set to within a thousandth of an inch. The powerful Reelsmaster 5100 completes the picture on the fairway. Further example of how we've worked



to provide you with the precision engineered tools needed to create perfect playing surfaces, beautifully. Give us a call. We'd like to walk your course with you and recommend the best machine to meet your precise needs. You can

trust Toro quality. To leave the right impression simply telephone 0480 476971 and we will arrange for a local dealer to contact you.



*Bringing perfection
to play.*



ERIC HUNTER GRINDERS LTD

Hobson Industrial Estate, Burnopfield,
Newcastle upon Tyne NE16 6EB.
Tel: (0207) 270316 Fax: (0207) 270312



42" capacity Mower Cylinder and Bottom Blade Grinding Machine. A truly 'precision' grinder, built to last half a century. Used and preferred by professionals.



The new Juno 36" capacity Cylinder and Bottom Blade Grinder will accommodate every make and type of professional and domestic cutting cylinders and soleplates. Simple to operate, fast changeover from cylinder to bottom blade grinding.

See us at
Scotsturf

The Rolls Royce Range

Quality engineering at its accurate best. Improve standards – cut costs

Our clients include:

- Beadlow Manor Golf & Country Club
- Bramley Golf Club
- Caldry Golf club
- Carnoustie Golf Links
- Carvoeira Golfe SA (Algarve)
- Cawdor Golf Club
- Charleslands Leisure (Co. Wicklow)
- Chirk Castle Golf Course
- Clitheroe Golf Club
- Collingtree Leisure
- Crompton & Royton Golf Club
- Delapre Golf Complex
- Eaton Golf Club
- Ely City Golf Club
- Glenbervie Golf Club
- Gleneagles Hotel
- Goring and Streetley
- Hags Castle Club
- Harpenden Golf Club
- Hellidon Lakes Golf & Country Club
- Kinross (Green Hotel)
- Leek Golf Club
- Lingfield Park
- Malone Golf Club
- Massereene Golf Club
- Mere Golf & Country Club
- Milltown Golf Club (Dublin)
- Mold Golf Club
- Mount Murray Golf Club (Isle of Man)
- Muirfield (Gullane) Golf Club
- Newbury & Crookham Golf Club
- Northwood Golf Club
- Omonde Fields Golf Club
- Pittdown Golf Club
- Pineridge Golf Club
- Ponteland Golf Club
- Royal Ashdown Forest Golf Club
- Royal Dornoch Golf Club
- Royal Liverpool Golf Club
- Rye Golf Club
- St Andrews Links Trust
- Slaley Hall G&C Club
- South Moor Golf Club
- Taunton & Pickeridge Golf Club
- Tehidy Park Golf Course
- Telford Golf Club
- The Berkshire Golf Club
- The Vale Golf & Country Club
- Turnberry Hotel
- Tyneside Golf Club
- Wellingborough Golf Club
- West Herts Golf Club
- West Sussex Golf Club
- Whitecraigs Golf Club
- Worplesden Golf Club



Course manager Martin Jones with one of the Oxfordshire weather stations

LESCO

THE GREENS MACHINE THAT
MAKES ECONOMIC SENSE
FOR TODAY'S GOLF COURSE



Prices start
at £10,400

Distributors required for certain counties

LGM LTD

Unit 17 Greenwich Close, Landseer Road, Ipswich, Suffolk IP3 0DD
Telephone: (0473) 289158 Fax: (0473) 289161

Big time here we come

From the greenkeeper's point of view the most important value of the water, unless you are a cynic who considers water as a space which does not need mowing, is that it forms a reservoir to contain rainfall for recycling in summer via irrigation – and the Oxfordshire does have a formidable irrigation system. For those who thrive on statistics, two lakes are used specifically for water storage and they have a 198,000 m³ capacity. There are nearly 1400 pop-up sprinklers fed by three pumps capable of outputting 1050 gallons a minute, and controlled individually by a Toro Network 8000 electronic controller through 46 satellite stations.

Every square foot of the course is drained – either as in the case of tees, greens and some fairways with underdrainage or elsewhere by virtue of gradients which shed surface water into catchpits, culverts and ditches, and there are some massive concrete culverts to conduct the water when an open ditch is inappropriate.

The ability of this catchment system can be judged by the fact that it has proved able to cope with the heaviest thunderstorm and in shedding this to the reservoir has lifted the level by 8" overnight.

Tees, up to seven per hole, allow for three levels of play as well as providing for winter, renovation and resting. All are fully drained and covered by irrigation, have 100mm drains at about 7m spacings, the 'sandy' root zone mix is laid to a 150mm depth.

Martin said that Rees was very much the artist who visited the course regularly during its construction but left the day to day work to his 'shapers' who were resident and very able.

Detailed drawings were made after the work was carried out, as a result Martin knows exactly where drains and irrigation lines are – not just where they should have been. The work was carried out by Southern Golf Construction of Warwick.

Greens, to the latest specification, have closer spaced drains than the tees, plus a drainage carpet, sand blinding and a greater depth of rootzone. In general the fairways rely on surface drainage, using catchment pits and culverts, all are fully irrigated usually with three lines. The roughs have similar treatment in terms of water shedding, but because many areas of rough are considered as features in their own right some of these are also subject to irrigation.

Both greens and tees were seeded at a rate of 9g/m², using British Seed Houses' Pencross creeping bent, while fairways were seeded with a mix of Freda chewings fescue and Cobra creeping bent at a low rate of 17g/m².

A mix of creeping fescue, chewings fescue and smooth stalk meadow grass was used for roughs at the same rate.

The fertiliser regime overall is based on controlled release compounds to provide a basic level of nutrient for all grass except the heaviest rough with rates being adjusted according to the location. This level is then 'topped up' by applications of a liquid fertiliser as required. Both soil and tissue analysis is used regularly, the former twice a year as routine, the latter – leaf analysis – carried out monthly.

Martin's records revealed application of 329, 49 and 278 kg/ha each of N., P₂O₅, & K₂O respectively to his greens and tees, while 266, 29 and 72kg went onto the fairways which have all clippings boxed off.

Mowing, and removing the clippings, has become a well organised logistics operation using a five man team, four operating mowers and one with the clippings trailer. Greens and tees are almost exclusively mown with pedestrian machines while ride-ons are used twice or three times a week on the fairways.

Plastic boxes are used extensively as intermediate containers for clippings – allowing the mower to work uninterrupted by the need to have a trailer to hand.

The clippings are an embarrassment, Martin admitted. "We compost them." However 'composting' tends to mean tipping them in a heap to heat and rot. He is hoping to acquire additional 'rough' grassland ground close to the course so that they can be spread finely for better decomposition. One

avenue he explored was to offer them to a local major grassland drying company, but they politely declined explaining that they expected their feedstock in considerably larger amounts and in longer lengths.

Electronic control of the irrigation is backed up by electronic weather data collection – Martin admitted that he has become a weather junkie – however he is unrepentant, saying that the weather station yielded invaluable information such as transpiration rates, and this is a considerably more accurate basis for irrigation than his judgement and it allowed for winds, day length and other parameters which are not usually included.

This variance from his own judgement has been something of a revelation. Programming the Toro Network 8000 was undertaken by the installers, but they said that it would take about three years for the club to get it tweaked to obtain its full potential. This three year learning curve to get it just right Martin thinks was about correct.

For the first two seasons the club employed

Autumn grass cutting: the Oxfordshire way

GREENS MOWING

Using Toro 1000 pedestrian mowers – 6 cuts per week September at hoc 4.5mm; 4 or 5 cuts per week October at hoc 5mm; 2 or 3 cuts per week November at hoc 5.5mm; grooming for half the frequency of mowing; grooming omitted following dressing.

TEES MOWING

Using Toro 1000 pedestrian mowers – 3 cuts per week September at hoc 8mm; 2 cuts per week October at hoc 8mm; 1 or 2 cuts per week November at hoc 8mm.

VERTICUTTING

Prior to dressing if possible.

NUTRITION

Sierrablen Mini (22-3-7) resin coated applied at 350 kg/ha in October in conjunction with coring, surface aeration and dressing. Peters Bentgrass High K (20-5-30) sprayed at 50 kg/ha every 14 days September, every 21 days October, every 28 days November. Vitax 50-50 Soluble Iron at 12 kg/ha tank mixed with Peters from October onwards. Maxicrop Triple Seaweed at 12.5 l/ha tank mixed in September and October.

GREENS THATCH CONTROL

Week 37 – Light surface aerate, topdress, roll; Week 40 – Verticut, 3/8in core, topdress, roll; Week 41 – Light surface aerate, topdress, roll; Week 43 – Verticut, light surface aerate, topdress, roll.

TEES THATCH CONTROL

Week 37 – Verticut, 1/2in core, topdress, roll; Week 38 – Light surface aerate, topdress, roll; Week 39 – Verticut, 1/2in core, topdress, roll; Week 40 – Light surface aerate, topdress, roll; Week 42 – Verticut, 1/2in core, topdress, roll; Week 45 – Light surface aerate, topdress, roll.

HAND WEEDING

Hand weed or plug patches of *Poa annua* in collars.

DISEASE AND PEST CONTROL

Control fusarium patch outbreak with Rovral or Quintozene. Control superficial fairy rings on tees with Fairy Ring Destroyer. Control leatherjackets with Gamma Col.

HUSBANDRY

Remove dew on days when mowing is not practised. Repair pitchmarks daily prior to all operations. Change pin positions two to four times per week. Move tee markers daily. Rotate use of tees where possible. Repair tee damage by divotting and/or plugging weekly.

'Electronic control of the irrigation is backed up by electronic weather data collection'

Big time here we come

an irrigation specialist and he has been responsible for the system, checking its function and re-programming run times for each sprinkler – however Martin is now satisfied that such a specialist is no longer needed. While the system is exceptionally sophisticated, Martin reckons it is also very easy to use.

The machinery line-up is extensive, with everything phased in new as required. The majority of the mowers are Toro, because, according to Martin, their specifications matched requirements at the time. Of course there are also Kubota compacts, the UK company being Thame based. A full time mechanic is employed, this keeps machinery in top condition and also allows the course to run with a lower level of machinery. He undertakes all the mower sharpening, the policy being to both spin grind and back lap regularly, and having asked around "which is the best machine?", the Oxfordshire ended up with Atterton & Ellis grinders.

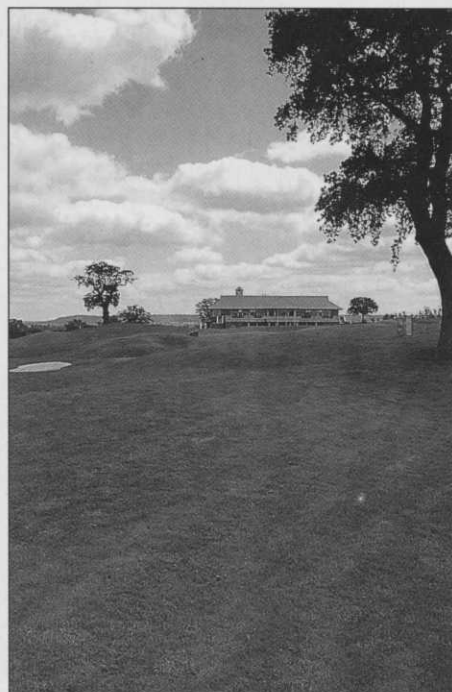
The greenkeepers' complex is situated close to the fourth and a useful distance from the clubhouse. It provides a full and almost lavish range of buildings and facilities, from Martin's

office through rest rooms to workshops and machinery storage, all facing a large yard and car park.

First impressions suggest that it is too large, particularly when it considered that the Oxfordshire is only an 18 hole course. However with the emphasis on perfection it is well staffed – staff numbers from 12 out of season to a high of 20 in summer. If this seems excessive perhaps it should be remembered that the Oxfordshire aspires to championship status, that it is not far from having been farmland and that the only acceptable 'weed-killer' for greens and tees and some of the fairways, is handwork.

In summary, from a management point of view the Oxfordshire is impressive – very impressive. From the aesthetic viewpoint I would certainly say Rees Jones fulfilled his aim and it has to be said that the landscaping works, although to be critical I find something unsettling about the sight of a parkland course full of dunes.

As to the challenge and fairness of the course, take Martin's word, even if he is not unbiased, that it does offer something for everyone.



Looking over 18th to club house from approach road

G

GOLF COURSE EQUIPMENT



Established 1896

USING OUR EXTENSIVE
EXPERIENCE
TO SUPPLY
THE GOLFING INDUSTRY
WITH QUALITY
PRODUCTS FOR:

- THE TEE
- THE FAIRWAY
- THE GREEN
- THE CLUBHOUSE
- THE GREENKEEPER
- THE DRIVING RANGE
- THE PUTTING GREEN
- TURF MAINTENANCE
- EUROPEAN SPECS

UNIVERSAL SWIVEL TUBE FLAGPINS

Available in 6ft, 8ft, 10ft and 12ft lengths of 12" PVC Swivel Tube suspended on Nylon bearings with a quick release Acorn shaped cap.

Our new Swivel Tube Flags will adapt to any universal manufacturer's flag pin

★★★



WINTER HOLE CUPS

The concept of the Winter Hole Cup grows each year. This has to be the most economical way of saving your greens in bad weather.

★★★

WINTER TEE MATS

There are now many options of saving the Tee area, and none better than the Tee Mat.

CALL NOW FOR FURTHER INFORMATION

**H. PATTISSON & CO LTD,
342 SELBOURNE ROAD,
LUTON, BEDS LU4 8NU**

TEL: 0582 597262 FAX: 0582 505241



THE PREMIER SUPPLIER TO THE
SPORTS/AMENITY/GROWER/LANDSCAPE
INDUSTRIES IN LONDON AND THE HOME
COUNTIES

Manufacturers of high quality turf dressings
Surrey loam and prescription mixed composts.

Can meet USGA specification or mixed to customers' individual requirements

Suppliers of: sands, aggregates, mulches, peat, bark, fertilisers, chemicals, grass seed, hand/powered tools and other products delivered by our own vehicles at competitive prices.

Cash & Carry facility: The One Stop shopping centre for the professional user with even keener discounts

Stockists: Levington/Fisons, Johnsons Seed, Vitax, Farmura, Maxicrop, Elliots Fertilisers, Standard Golf, Netlon, Indeline, and others

Please telephone for catalogue and information

A Division of DK East Ltd
Wholesale Horticultural Sundries
College Road, Hextable, Swanley, Kent BR8 7LT
Tel: 0322 668265 Fax: 0322 660006

Shanks Mowers

EXPERIENCE OUR SERVICE

*The Turfcare Machinery you want
and
The Professional Support Service
you need!*

RANSOMES

JACOBSEN

 **GREEN'S**

CONTACT US NOW AND USE
OUR EXPERIENCE

GROVE WORKS, BENSHAM GROVE
THORNTON HEATH, SURREY CR4 8DA

 **081-771 4811** (Telephone & Fax)

All Seasons Dressings

Top Dressings • Sands • Top Soils • Fern Soil
Suppliers of Soils for Golf Courses



Britain's leading Top Dressing supplies

TOP DRESSING: Grade 1, 2, 3 to a high specification

ROOT ZONE MIX: Individual mixes, USGA specification, Lime free sands used

SCREENED SOIL: 3mm and 6mm Screened soil for divoting and construction.
Naturally organic

SANDS: Free draining. Lime free sands for bunkers and top dressings

CONSTRUCTION: Tee and Green construction undertaken by our own
professional tradesmen

We at ALL SEASONS DRESSINGS have researched long and
hard to achieve a Top Dressing to a very high quality product.

All our soils and sands are tested by local agronomists and
chemists to obtain the best results for your greens and tees.

119 London Road, Kingston upon Thames,
Surrey KT2 6NH

Telephone: 081 546 3960 • Mobile: 0831 871939


Fax: 081 547 1923

JOHN DEERE



Nothing Runs
Like a Deere



 **0206
230283/
230146**



PHONE FOR DETAILS
OF HIRE MACHINERY

GREEN WORLD

P. TUCKWELL LTD

Ardleigh Hall, Ardleigh,
Colchester, Essex
C07 7LG

Job Shop

Job Shop is a new
service provided by
Greenkeeper
International which
will give
greenkeepers:

★ the opportunity
to let potential

employers know about them for only £19.95

★ looking for new
opportunities, a change
of location, promotion,
or perhaps a move back
into greenkeeping

Don't forget to
include details of
qualifications,
experience and
perhaps award
wins. You can fit
approximately 50
words into your
advertisement.

Just send your details with a cheque for £19.95
made payable to BIGGA, to Job Shop, BIGGA,
Aldwark Manor, Aldwark, Alne, York YO6 2NF

For only £19.95
you get a space
this size in the Job
Shop section to
tell clubs about
yourself. The cost
includes the use
of a confidential
box number.

Around the Green

Keeping in touch with news and comment from the regions

SOUTH WEST

With the departure of the summer season and the onset of autumn, so thoughts turn to renovation, and by the time you read this many greenkeepers will be well into essential autumn course maintenance programmes if quality surfaces are to be obtained next year.

The latter part of the year also enables another important factor – education – to be considered, both with the start of educational courses at recognised colleges throughout the country and also at section level with the organisation of days of instruction leading to certification in PA1, PA2, first aid and chainsaw use. Various members have already contacted me regarding these courses which are in the process of being arranged. If, however, you feel that these apply to you, please contact me to register.

Continuing the education theme, the annual regional seminar will be held at Cannington College on November 30. This has been well supported in recent years so an early return of the application form is suggested. Among the speakers will be Mike Smith, soil scientist at Myerscough College, and David Golding from the GTC. He will be explaining the NVQ system.

The fixture list for 1995 is now being finalised and will be with you early next year with some interesting venues promised. This month's events include matches against South Wales at St Pierre on October 5 and the South Coast at Marlborough on October 25.

The section's annual meeting will be held at Knowle GC on November 10. It will follow a morning round of golf, lunch and a short afternoon lecture. Any proposals for discussion at the AGM should reach me in writing by the end of this month.

This year's Summer Tournament was held at my course, Filton. My greenstaff and I had the pleasure – if that's what it can be called – of preparing the course for a field of 42.

The day passed with only two small hiccups: the theft of the pin from the 11th green by children from the local estate, and our chairman attempting to kneecap our regional board officer. This happened as John York drove from the 6th tee. His ball struck the general play tee marker in front of him and shot at right angles in the direction of the 7th green where Robin Greaves was preparing to putt out. On spotting the approaching danger, Robin took evasive action by leaping into the air only to be hit on the ankle, lose his balance and be unceremoniously dumped on his backside on the green. Fortunately the funny side was seen by all and little damage was done!

After some good scoring, an enjoyable day was rounded off with an excellent meal and hospitality laid on by steward and stewardess Martin and Julia Rose. Our thanks are also given to Filton GC for extending us courtesy of the course, to the trade for their generosity in donating prizes and to Filton's greenstaff for their efforts.

Results: Best head greenkeeper – Robin Greaves nett 67; best assistant – Andy Liddle nett 70; main competition – 1, Paul Godwin nett 70; 2, Nick Wilson nett 72; 3, Jonathan Leigh nett 72; 4, Ian Hazell nett 72; 5, Peter Baynton nett 72; 6, Marc Haring nett 73.

Finally, belated congratulations to Huw Parry from Bristol and Clifton GC on his appointment as lecturer in greenkeeping at Cannington College. We wish him every success.
KEVIN GREEN

AYRSHIRE

By the time you read this report we will be well into the autumn programme, yet it seems like only yesterday everyone was battling to get some growth in the severe spring of this year. Hopefully our work this back end will be welcomed by something better in '95.

The section is hoping to run some winter events this year, with possibly two evenings – or even afternoons – given over to guest speakers. The annual games event will again be held, but this time a little earlier to avoid clashing with the festive season. Hopefully this initiative will encourage more membership participation leading even to some new faces helping to run the section. Please respond quickly when the details of each event are sent out.

It was good to see many old faces at the Open, it's turning into a great meeting place. New faces joining the support team from our section belonged to Lee and Roland Blackburn and Ian Barr.

Recent movements include Vince Reid going from Castle Douglas to take over Colvend GC and Dean Whan going from Kirkcubright GC to take on his first head greenkeeper's job at

EVENTS DIARY

The South East Region Greenkeeping Conference will take place on Wednesday October 26 at Oaklands College. Speakers include John Hacker, Dennis Mottram, Guy Longshaw, John Millen and Derek Green. Attendance attracts three Master Greenkeeper credits.

November 9-10: Scotsturf, Ingleson, Edinburgh

December 1: Scottish Region North Section one-day conference at Craibstone Estate, Bucksburn, Aberdeen

January 23-24, 1995: National Education Conference, Harrogate

January 25-27: BTME '95, Harrogate International Centre

Castle Douglas GC. Steve McWhan is the new apprentice at Dumfries and County GC. Dumfries and Galloway, part of our section, is seeing a bit of a boom in course construction with new courses at Kipford, The Craigieknowes Club, Brighthouse Bay GC, The Solway Links and also Colvend extending to 18 holes from nine.

DUNCAN GRAY

(Duncan, who wrote an article for us recently on the new course at Loch Lomond, is not a course manager. He is the contract manager for Mitchell and Struthers (Contracts) Ltd which runs five golf courses and five bowling greens for Kyle and Carrick District Council along with other grounds maintenance.)

EAST MIDLANDS

Our section was well represented at the National Tournament at Dartmouth Golf and Country Club and Paul Sewell won the longest drive on day two, and nearest the pin on day three with the last tee shot of the tournament. The section's honours though went to Richard Barker and Roger Willars for their entertaining frames of snooker against Ray Reardon. Unfortunately their combined frame scores did not match any of Ray's breaks.

This year's match against the Midlands will take place at The Warwickshire GC on October 12 courtesy of Rigby Taylor.

Congratulations go to Steven Heap of Rothley Park GC for passing his Scotvec 2 exam and also to Mark Cumpston on his appointment as deputy head greenkeeper at Westwood GC.

Finally, would any member who does not wish his or her phone number to be circulated to fellow members please inform me as soon as possible.

ANTONY BINDLEY

KENT

This will probably be my last contribution to Around the Green for the Kent Section. I also intend to resign my position on the committee. Due to pressure of work I can no longer devote the necessary time to the section. As some of you may already be aware I am now installed as course superintendent for American Golf UK at Cray Valley and Ruxley Park golf courses. The 54-hole site has its fair share of problems and putting these right is taking all my time.

Coupled to this I have had a fairly long stint as Kent scribe, almost as long as I have been on the committee, some eight years. In this time we have all seen our Association and section grow and there must be some more of you out there now ready to continue with this progress.

Well, on the summer golfing front, no Kent winners at the wind and rain swept National Tournament, although the Kent team managed to finish with "mid table" respectability.

I recently heard from Mark Smith at St Augustine's GC. Perhaps a cautionary reminder to all of us of the dangers of using the commonplace equipment that we all come across in our day to day duties. It appears that even properly kitted out in the correct safety equipment, a small object managed to pass the protective face shield he was wearing while using a brushcutter, and lodge in his eye. This resulted in some serious long-term damage, Mark being away from work for a good few months and not being able to drive. Full recovery has taken some time and the sight in the affected eye may never be the same as it was prior to the accident. Mark would like to pass on his thanks to the members at St Augustine's who rallied round to help pay for his travelling expenses to London for treatment from an eye specialist.

On a lighter note, although one that could have turned out rather more serious, Neal Carter and his lads at Birchwood Park seem to be specialising in digging up unexploded bombs. After

some major manhandling, poking and prodding the amateur opinion of his staff was that they may have dug up a bomb and after calling the police and disposal experts it was necessary to explode the device on a secluded corner of the course. On returning to the maintenance sheds one of the experts noticed that a small metal object stored in the corner was in fact an unexploded incendiary bomb, again requiring some attention. It appeared that the only attention that Neal's staff had been giving to it was to occasionally kick it around the shed. It was a good job it had not been used for indoor cricket practice.

But I can claim a bigger find. The lump of metal that I dug out of my first fairway at Barnehurst, after it wrecked half the tines on a Verti-drain has subsequently been identified as the remains of a VI flying bomb. The expert from the historical department of Bexley Borough did ask if I wished to continue to dig for the rest of the device and along the stick of bomb craters in the 8th fairway, but I declined. Some future greenkeeper can have the pleasure of that experience.

So I now bid you farewell. I am sure when time permits I will be able to send the odd sharp letter into the magazine. I will say no more than I am presently having greens rebuilt on my Ruxley course and 100% *Poa annua* turf did not feature in my specification when choosing to re-turf these greens. I understand it does in some!

PAUL COPSEY

SOUTH COAST

Our summer tournament at Southwick Park Golf Club went well and a profit was made towards section funds. Prizes were donated by Parker Hart and Roffey Bros and we would like to thank them for once again supporting our events. Also our thanks go to the management of Southwick Park for the use of the course and to David Hinks and his team for its condition. Bob Cully and Mark Webb once again did a fine job of the organisation, they're getting the hang of it now!

The results from the tournament were: 1st with 43 points Martin Harper and Chris Lawrence, 2nd also with 43 points Eddie Fox and Eddie Vickers and 3rd with 41 points Darren Miller and Mark Eggbeer.

The section and region autumn and winter events are getting underway now with the workshop on Health and Safety at Cannington College on Wednesday October 12. Also at Cannington College is the regional seminar on Tuesday November 23. Nearer home we have the first of our section winter lectures at Alresford Golf Club on Wednesday November 2 starting at 7pm. Bob Young will be along from Sparsholt College to cast some light on the new NVQ qualifications and the changed role of the head greenkeeper in staff training. Because of the many changes coming in with regards to education in the industry our winter programme is weighted towards this.

Because of the difficulty often of obtaining news from around the section I would like to set up a few local reporters who could feed back relevant information and make this item more newsy. Anyone who may be interested in doing this can write to me at 45 Constable Close, Sholing, Southampton, SO19 1EN, or phone 0264 334269/0585 400529/0703 438808 (evening). In particular I would like to hear from anyone in Dorset, the Isle of Wight or the Channel Islands.

ALAN MITCHELL

NORTH WEST

This year's Roses match was played at Mottram Hall in the heart of Cheshire. This is a very impressive De Vere hotel and golf complex, and golf co-ordinator Natalie Cymbalista and course manager Barry Gregson made us most welcome.

The course was in great condition despite having recent problems with the greens, which Barry tells me were caused by algae in the watering system. (I seem to remember Derek Ganning telling us at the Mere seminar about a similar problem at The Belfry.) Anyway, the course played well and the NW won 5-3. That must be a pint that Mick Hannam owes me.

One memorable incident was when Sir Bobby Charlton, playing in front of Paul Pearce, came under fire from one of Paul's wayward shots. Fortunately it missed but perhaps it would be advisable for Sir Bobby to wear a suit of armour when playing in front of greenkeepers instead of his waterproofs.

Many thanks to Jonathan Hinch and H Pattison for once again sponsoring this tournament which has been run for the last 15 years, and we hope will run for many years to come.

The NW section AGM will be held at West Derby GC, Yew Tree Lane, West Derby, Liverpool on October 25 commencing

7pm with a lecture.

Any news or queries, call me on 051 7245412.

BERT CROSS

NORTHERN SECTION

Unfortunately we were not successful in retaining the trophy during the annual Roses match, played away at Mottram Hall this year. The team that represented our section were: T Jarvis, L Kirkbright, G Potter, G Oxley, D Collins, A Baxter, R Johnson, M Cordingley, R Smith, M Hannan, D Cockburn, P Marshall, A Gerrard, R Spencer, C Geddes

Congratulations to you Bert Cross and your Lancashire team, but I am confident that the Northern Section shall win the trophy back next year. I must also thank Peter Marshall and Patissons for their continued sponsorship of this event. I do hope this continues for the coming years.

Our Invitation Day took place at Harrogate Golf Club. The results were as follows: 1, M Hannan - B Robinson 62; 2, A Gerrard - B Gerrard 62; 3, A Baxter - A Taylor 63; VPs - 1, M Guy - D. Sidebottom 65; 2, N Schofield - D McPherson 68; 3, A Dyson - R Donaldson 71; nearest the pin - Joe White; putting competition - Joe Nelli (Ransomes); highest score - K Millington - H Storey.

Congratulations to all the winners. Firstly, thanks to Harrogate Golf Club for allowing us the use of their beautiful course and clubhouse. Thank you to club president Mr Mayo and club captain Mr Robinson for giving us a warm welcome and presenting the prizes to the lucky winners. Thanks must also go to Tony Baxby, the course manager and his team for preparing a beautiful course for us. Thank you to John Price and his colleague Tony Dodson who represented our main sponsors on the day, Yorkshire Mowers. The prize table was splendid and appreciated by everyone - especially the winners. Thank you for your sponsorship and I hope this will continue in the future. Other prizes donated on the day came from Liam Galway (I had been calling him Brady all day) of The Greenkeeping Supply Company, Norman Schofield of Rigby Taylor, Allan Dyson of Gem, H. Storey/Keith Millington of Mitchells, Mike Brear of Trident, Gerald Brady of Rhone-Poulenc, and Norman Sheddton of Aitken's Sportsturf Ltd. Also thank you Norman for doing the scorecards once again. Our main sponsors on the day Yorkshire Mowers also had on demonstration various machines. A lot of interest was shown in the new electric greens cutter. I spoke to Mark Carter of Ransomes who was demonstrating the E-Plex. Mark said the main features is the fact that it has no oil, diesel/petrol, hydraulic oil or noise, therefore maintenance cost are extremely low.

I have been informed that Ian Thompson of Wetherby Golf Club won 1st prize in Farmura's Blazon promotion, the prize being a Hardi spray machine. A runner up prize went to another of our members, Kevin Colefax, head greenkeeper at West Bradford Golf Club.

I welcome to our section the following new members: Kenneth Ward, Forest Park Golf Club and Martin Shaw, Bradley Park Golf Club.

If any member has been offered or hears of anyone trying to sell a Case International 385 tractor with a Chilton MX450 front loader and a McConnell Ditch Ring mounted on the rear, please contact me as mine has been stolen. Tel: 0274 568128.
PAT MURPHY

LONDON

Our summer golf tournament was held at Dyrham Park Golf and Country Club. The day was a great success and I would like to thank Don Wilson and his staff for preparing the course. The conditions were perfect although the wind did cause one or two problems for most of us. The winner with 36 points was Terry Colvill and the runners up were Ian Semple with 35 points and Barry Moggridge with 34 points. The longest drive was hit by Ian Semple and the nearest the pin prize was won by Darren Davis. The winner of the putting competition was our chairman, Doug Smith. The guest prize was won by the captain of Dyrham Park, Brian Cohen.

I would like to thank Dyrham Park for the excellent hospitality and help that was on offer throughout the day. A special thank-you to the trade for supporting us and for providing the funds for an excellent prize table.

Our next golf event is the turkey trot on Thursday November 10 at Sandy Lodge GC. Details will be sent out nearer the day. The winter education workshops are being compiled and details will be available towards the end of the month. This month we host the south east region greenkeeping conference at Oaklands College on Wednesday October 26.

TONY DUNSTAN

NORTH SCOTLAND

For the second year running the Ross-Sutherland Champion of Champions is a greenkeeper. This time Tain's Jocky Urquhart came out on top in the final played over the testing Carnegie course at Skibo. The course owner Peter De Savary was present for the prize giving and made a special award of a gold headed Carnegie putter, one of two so far that have been presented, the other went to Greg Norman who visited the course recently.

Several local greenkeepers were in the healthy crowd to watch the final and see for themselves what a superb course

this is. Jocky had just returned from Muirfield where he had been playing in the Pringle Champion of Champions, but was not quite so successful there! Incidentally the lady champion at Muirfield was one Emma Dugglesby who once worked at BIGGA head office.

At a recent Scottish executive meeting, two things of note came out. Firstly, this year's Patrons Award will be given to two members from each section, with a prize of £200 per person to be used for educational purposes. This can be put towards a course or a trip to Harrogate '95. We thank the Scottish companies that make this award possible by joining the patron scheme each year. Secondly the region will be organising a package trip to Harrogate again in January. A bus will take people down on the Tuesday evening and return after the exhibition closes on the Friday. The deal will include accommodation, so anyone interested should be ready for the forms coming and return them promptly.

Copies of the proposed review to take the Association into the future are in my care and available to any member who contacts me.

Finally, a belated good wish message to Allan Grant who retired earlier this year from his job at Fraserburgh GC. We will still see him at outings but in the meantime we wish him all the best for a stress-free retirement.

IAIN MACLEOD

SURREY

There were more than 50 entries for the latest McMillan Tankard at Sunningdale Golf Club. Thanks to Jack McMillan for presenting the prizes and to Geoff Cotton for donating an additional prize of which our Surrey Section were most grateful. Results are as follows: 1, J Roberts 37 on countback; 2, G Kyle 37; 3, G Roberts 36.

Members interested in attending next year's BTME at Harrogate should contact David Andrews on 081 6513252 as a coach and accommodation need to be booked.

Tickets for our Surrey Section dinner-dance at Reigate Manor Hotel on November 11 are still available. Anybody interested please contact your committee members. Tickets are priced at £18. Three course meal plus disco inclusive.

The first winter lecture has been set for November 9, 7-7.30pm at Kingswood Golf and Country Club. The lecture by Bill Oliver of Hardi Sprayers will be held in the Warren Room.

Forthcoming events include the Autumn Tournament, this year held at Burhill Golf Club on October 20 and also this year's Turkey Trot at Kingswood Golf & Country Club on December 8.

Members of the Surrey Section who do not have handicaps and wish to enter competitions can submit cards to our handicap secretary, Tony Lafrate c/o Reigate Heath Golf Club, Flanchford Road, Reigate, Surrey.

Please also ensure that competition entry forms are returned to Derek Walder on time as late entries will not be included.

Any information of interest to other members that you may like to be included within this article please contact me on 0737 832015.

DAVID GIBBS

EAST SCOTLAND

The summer sun shone on the day of the annual Willie Woods Memorial Trophy day, held at Murrayfield Golf Club. A field of 16 teams started to do battle at 1pm. By the time the last competitors arrived at the 18th it was plain to see that the scores were going to be on the low side. This tournament was started in 1988 to bring together the greenkeepers and members of their home clubs committees and it is only a pity that many greenkeepers do not ask a partner to come along to one of the highlights of the year.

The match was sponsored by Huxley Grass Machinery and we thank them for their excellent support and prizes. In third place with a nett score of 63 were S Dixon and C Stewart of Newbattle GC. In second place with a 62 were A Holmes and J Stevens of Seahouses GC. And the winners with a 59 were W Blair and D Hastings Kingsknowe GC. The winners are always asked to host the following year's tournament, and I look forward to having you all at Kingsknowe in 1995.

Yes, the golf was very good, but the scores could not have been obtained without the course being in excellent condition. This was prepared to the highest standard by Jimmy Neilson and his staff. This year we have all suffered from the very dry summer but the playing conditions at Murrayfield made a great deal of the surrounding courses look like deserts. We thank Jimmy and his staff for a first class day and hopefully it won't be long until we return to a course not played by the Association since 1984.

As I have said in the past, if you haven't reserved your dance tickets do it now or miss out on the highlight of the year.

Checking through the fixture card, you will see the events still to come; don't forget the skittles night and all lectures arranged for these dates. It would also be nice to see as many of our new members, or for that matter some more of our older members, attending.

I made a mistake in my last report when I said that the AGM would be a golfing event. It will be a lecture although golf will be available. The lecture arranged for October 27 is a visit to Stewart and Co turf farm and compost works. Hopefully numbers will

be high so that it is worth Stewart and Co putting this on for us.
WILLIE BLAIR

BUCKS, BERKS & OXON

My apologies to you all for the lack of reports lately but I've been spending many midnight hours slaving over the 'Towards 2000' document.

A big thank-you from the section to the golf clubs that have supported us this year:

Mill Ride for the Spring Tournament won by Paul Reeve of Sonning GC; Ellesborough GC for the Summer Tournament won by Ken Flint, the secretary of the club (cries of 'Fix' all round). In particular we would like to thank the clubs' committees, Gordon Irvine and his staff at Mill Ride and David Childs and his staff at Ellesborough.

Two Rigby-Taylor fourball results in: D Goodchild and I Rose beat R Woodwood and C Mitchell; and Critchley and Bond beat D Childs and G Butler.

RAY CLARK

CENTRAL SCOTLAND

Another section member, James, (The Viking) Duncan, has joined the trek south of the border. He is leaving Aberdour GC, where he has been since leaving school, to become first assistant at Boughton GC, Faversham, Kent. James has been an avid Raith Rovers supporter through thin and even thinner and there is a strong rumour (started by someone with the initials MC) that he has moved because the 'pars' beat the Rovers recently. Best wishes and every success for the future! Keep in touch.

Twelve teams entered the five-a-side tournament, with a good mixture of greenkeepers and trade members. Results will appear next month.

A lecture by Jonathan Franks and Robert Twaddle from British Seed Houses will be held at Aberdour GC on the afternoon of Tuesday November 8 (not 2nd as previously published). Details should have reached everyone by now.

Tickets for the annual dinner-dance are on sale now, priced £15 each, they are available from section committee members and me. So, if you don't want to be disappointed, reserve yours as soon as possible.

The section AGM will be held at Aberdour on Tuesday November 29, prior to which there will be a talk on aeration practices by Quentin Allardice, contracts manager at STS.

JOHN CRAWFORD

DEVON AND CORNWALL

Unfortunately I couldn't attend the National Tournament which was held in our section at Dartmouth Golf and Country Club. All members who played in the tournament were full of praise. Our congratulations to Terry Farkins and his staff who presented the course in excellent condition.

The section's AGM will be held at Lanhydrock GC, Bodmin, on Wednesday November 23. As usual the morning's foursome competition will be for the Toro Trophy with prizes kindly donated by Devon Garden Machinery and Lely. Non-playing members will have a guided tour of the course during the morning with head greenkeeper Martin Morgan as your host. The AGM will follow lunch. Our region's seminar will be held on Wednesday November 30 at Cannington College. If you haven't booked your place yet, contact Gordon Child on 0803 844056.
RICHARD WHYMAN

EAST MIDLANDS

This month we welcome Lee Hughes of Chilwell manor GC to our section. Congratulations go again this month to Richard Barker and Dave Leatherland on finishing second in an am-am tournament at Dave's home course, Kedleston Park, with a score of 13 under par.

This year's winners of the section's pairs K/O tournament are D Leatherland and P Tatlow of Kedleston Park. They beat C James and D James 3&2 at Breadsall Priory GC.

Finally a reminder to all members that this year's AGM will take place at Ullesthorpe Golf and Country Club on November 16 at 4.30pm.

ANTONY BINDLEY

SHEFFIELD

The Sheffield section AGM will be held at Rotherham GC on Thursday November 3 after our winter league event.
IAN COLLETT

NORTHERN REGION

The sun shone again for the righteous at this year's Hayter Challenge Final at Pannal Golf Club. I am delighted to report a spectacular win for the Northern Regional Team which consisted of Tony Mears, Ian Hutton, Gary Potter, Alan Baxter, John Waite, David Spurdin, Chris Powley, Chris Fiddell and John Jones. Our thanks must go to our generous sponsors Hayter and Pannal's new head greenkeeper, Kevin Wroe, for presenting the course so well for the competition.

Very well done to all the Northern team and, as we were discussing at the banquet, the cheques will be in the post.

Please make a note of my new address: 5 Lynam Way, Madeley, Nr Crewe, Cheshire CW3 9HX. Tel: 0782 750539.
BOB LUPTON

A BIGGA Thank you



**BIGGA
GOLDEN KEY
and SILVER KEY
CIRCLES**

*...to the following
companies, in recognition of
their continued support for
the Greenkeeper Education
and Development Fund*

Golden Key Circle:



Professional Products



The Toro Company
International Division
Irrigation



Lely (UK) Ltd.
UK distributor for Toro
Commercial Products

HAYTER



Silver Key Circle:

RANSOMES



*Together, we're building a
great future for golf club,
greenkeeper and game*

For details of how you can support the
Education and Development Fund,
Contact BIGGA at Aldwark Manor,
Aldwark, Alne, York YO6 2NF.
Telephone: 0347 838581 Fax: 0347 838864



Turf-Care Supplies:

- Fertilisers
- Soil Conditioners
- Wetting Agents
- Pesticides
- Grass Seeds
- Turf
- Line Marking Materials
- Sports Equipment
- Top Dressings
- Soils & Sands
- Composts
- Bark
- Tools

Engineering Services:

- New Machinery
- Reconditioned Machinery
- Service
- Repairs
- Overhauls
- Spare Parts
- On Site Servicing and Repairs

Hire and Contract Services:

- Specialist plant hire
- Verti-draining
- Aerating
- Top Dressing
- Over-Seeding
- Hydro-Seeding
- Grass Cutting
- Spraying

For all your Turf-Care needs

PARKER HART

T. Parker & Sons (Turf Management) Limited,
Maiden Green Farm, Worcester Park, Surrey KT4 7NF
Tel: 081-337 7791 Fax: 081-330 7392

FUSARIUM

Early diagnosis is essential for fusarium patch control, says the STRI's Kate York

Don't let THIS happen to you

Fusarium patch is the most damaging and disfiguring fungal disease to attack fine turf in the UK.

Good management techniques can go a long way towards minimising the effect of this disease but no system can guarantee fusarium-free greens, according to Kate York, plant pathologist at the Sports Turf Research Institute, Bingley.

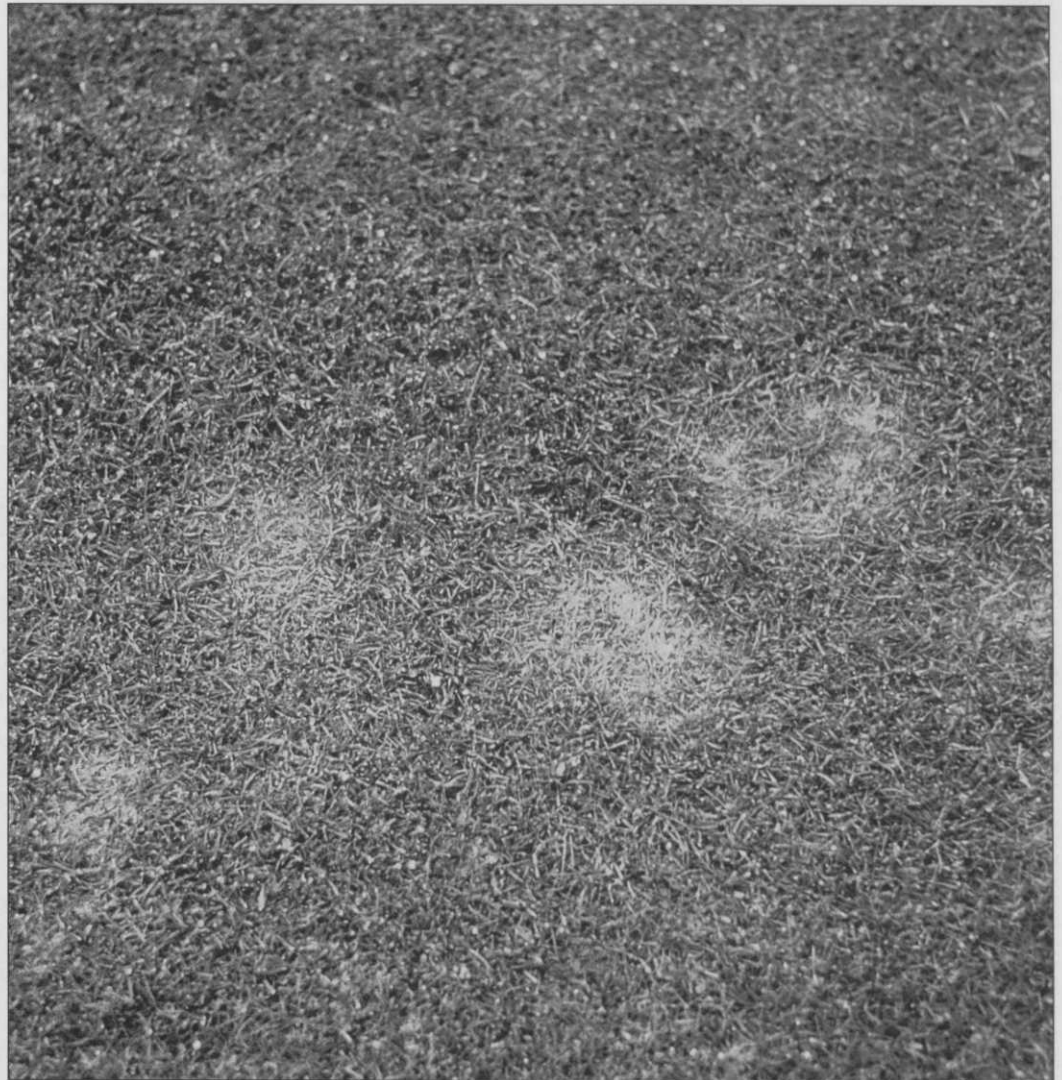
"The key to minimising fusarium patch damage is accurate diagnosis of the first symptoms of the disease. Almost all Britain's golf courses have a fusarium patch problem to some extent, so every greenkeeper should be on the lookout for early signs, especially between October and March when the fungus is most active," she says.

"Fusarium patch starts off as small orangey-brown circles of about 5cm in diameter. If left untreated once observed, the disease can rapidly spread in a very short period of time.

"These small patches increase in size and coalesce, eventually growing into larger dark-edged circles with straw-coloured centres which, when the disease is active, are slimy to the touch. This is the face of fusarium that all greenkeepers will recognise.

"Once the disease has become so firmly established that grass at the centre of each patch is dead, new spores are being released. These spores can be spread across the affected area causing a rapid rise in disease levels. Immediate fungicide treatment at this stage is imperative."

The fungus causing these problems is called *Microdochium nivale*. It is present in turf all year round, thriving particularly in cool, humid conditions. Although fusarium patch is generally considered to be a winter disease, it can occur throughout the year if



environmental conditions are suitable.

"Wet greens with a high level of *Poa annua* and a history of fusarium patch are most at risk every year," says Kate.

"To minimise the spread of fusarium patch greenkeepers should nominate one or two more susceptible greens and use them as 'indicator' greens. Shaded or sheltered areas, where the turf surface stays wetter for

longer, are ideal for this purpose.

"As a general rule, if fusarium symptoms are spotted on the 'indicator' greens, the disease is likely to appear on others within two weeks if there is no significant change in weather conditions. Using these greens as a guide will allow fungicide applications to be correctly timed, containing the problem and minimising turf damage.

"To maintain good control after the initial treatment, greens should be regularly monitored and repeat fungicide treatments should be applied as and when necessary."

If early action is not taken, the price can be high. The disease is extremely vigorous and spreads rapidly. If fusarium patch is allowed to establish itself, scars will be left on the turf surface and will cause further problems

FUSARIUM

even after the disease itself has been controlled.

"Although turf will grow back into the bare areas, weed grasses like *Poa annua* will recolonise the scar more quickly and increase the overall weed burden of the affected green," adds Kate.

Here are some management techniques she says could help tip the odds in the greenkeeper's favour:

"Keep the green surface as dry as possible by 'switching' to remove dew and rain. If greens are continually retaining excessive amounts of water, reconstruction of these areas should be considered.

"Avoid late fertiliser applications. Nitrogen applied late in the year will stimulate grass when growth rates should be decreasing. A quick, weak burst of growth will create a plant that is much more susceptible to the fungus.

"Keep an eye on the thatch. If the thatch layer gets more than half an inch deep it will retain moisture and provide an ideal environment for fungal growth and over-wintering. If the thatch is reduced, the inoculum which has the potential to cause problems the following year will also be reduced.

"Topdressing applied at too high a rate or left on the surface of the turf will also cause problems, smothering the turf and incubating the fungus.

"Finally, always be alert to the danger signs. When out mowing take a few moments to carefully examine the most susceptible greens.

"Both the STRI booklet and the recently published BIGGA guide on disease identification could prove to be invaluable tools in the early diagnosis of fusarium patch. Once the disease has been spotted, act immediately by spraying all greens to avoid further problems.

"Every greenkeeper knows his own greens and can best judge the problems he is likely to face," she concludes. "The key to successful control of fusarium patch is to take action as soon as it is seen. Applying fungicide sprays on a calendar basis, whether or not the fungus is active, will only waste time and money."

Treated seed is an effective way of keeping fungal attacks at bay

Greenkeepers using perennial ryegrasses are being advised to buy treated seed to ward off fungal attack.

Geoff Taylor, technical officer at Johnsons Seeds, warns that the arrival of the autumn with its warm moist soils, ideal for speedy germination, can often be interspersed with cold nights and heavy dews – predisposing factors for attacks by fungal disease on emerging grass seedlings. The seedbed if poorly prepared, especially when lying too wet (or even too dry), is the cradle for numerous fungal pathogens.

Renovation of thin turf is a prime case for treated seed. Serious losses can occur from

the earliest stages – with attacks on ungerminated seeds through the phases of pre- and post-seedling emergence.

Whilst recommended seed rates are designed to allow for these and other causes of seedling mortality, treatments such as Apron T treatment with its potent duo of thiabendazole and metalaxyl provide a relatively economical extra measure of protection against severe seedling losses. New sowings can be devastated by the well known 'damping-off' disease which involves a complex of fungi – the two main culprits being fusarium and pythium, respectively associated with excessive dryness

and wetness.

"Rapid and even seed development is a prime requirement in autumn to ensure that a new or renovated sward is well established before conditions deteriorate and growth ceases," says Mr Taylor. "Delayed sowings, therefore, are another obvious instance where seed treatment is an essential precaution.

"Faced with the risk of fungal disease, we believe treated seed is a prudent assurance policy that avoids the significant losses of time and money associated with sub-optimal sowing conditions."

For further details call Geoff Taylor on 0205 365051.

Fungicide dressing helps grass germinate quicker, saves money

A trial at Writtle College has shown that many amenity grass species will germinate quicker if treated with a certain fungicide dressing or polymer coating. The trial was set up in conjunction with Rhône-Poulenc to investigate the effects of non-mercurial cereal dressings on the germination and establishment of a range of five amenity grass species: creeping red fescue, browntop bent, smooth stalked meadow grass, chewings fescue and perennial ryegrass.

The seeds were dressed with a fungicide seed treatment containing guazatine plus imazalil, with and without a polymer film coat developed by Rhône-Poulenc. Guazatine plus imazalil is supposed to be particularly effective against seed and soil borne pathogens such as fusarium. The polymer coating, which is water insoluble, controls uptake of water into the seed, resulting in improved syn-

chronisation of seedling emergence.

"By retaining the active ingredient within the polymer and reducing leaching into the soil, it maintains a level of disease protection well into the early stages of seedling development," says KB Seal, senior lecturer in crop protection at Writtle College. "The polymer also allows the seeds to be more evenly dressed, which reduces the danger of overloading active ingredient on to the treated seed and its subsequent possible phytotoxic effect on either the seed or the emerging seedling. In addition, the polymer film coating increases the seeds' resistance to abrasion during handling and sowing and reduces dust."

After the trial, Mr Seal said: "All the amenity grass species except perennial ryegrass, which failed to respond to any of the treatments, showed both an increased rate and percentage germination with either fungi-

cide seed dressings, polymer or combinations of fungicides plus polymer 13, 14 and 19 days after sowing."

He concluded: "While the individual grass species showed varying responses to the different seed treatments, there was an overall trend of an initial boost to both the rate and increase in germination 13 days after sowing. The majority of the seed treatments commenced germination 2-3 days ahead of the untreated controls with this difference in growth also being reflected up to the two leaf stage. These differences were achieved with no apparent turf diseases evident on the emerging seedlings of either the treated or untreated controls. Neither was there any evidence of phytotoxicity on any of the seedlings from the seed treatments. The increased rate of germination, even by 2-3 days, could be of considerable economic benefit to golf courses."

Former welder heralds start of greenkeeping career with an award

Former steelworks welder Carl Price, pictured, has made an award-winning start to his new career as a greenkeeper.

Carl, who lives in Shotton, has just been presented with the 'Hortiplay' award for excellent achievement at the Welsh College of Horticulture in Northop, Clwyd.

He worked at the new Northop Country Park Golf Club during his training and has now been permanently recruited as an assistant greenkeeper. This marks the successful end of a country-wide trawl for work.

After being made redundant from Shotton steelworks in the early '80s, Carl travelled all over the UK as a contract welder, but found it increasingly difficult to find work as the recession bit.

Eventually he returned home to North Wales and saw the greenkeeping course advertised in his local paper.

Carl was one of 11 students



who undertook the NVQ Level 2 course at the Welsh College of Horticulture, supported by the Training and Enterprise Council for North East Wales.

Carl is one of a seven-strong greenkeeping team which looks after the 6,680 yards course at Northop Country Park, which is set within 247 acres of carefully tended parkland.

Noel Hynes, course manager, said: "We are delighted with Carl's success and have found him to be a very productive member of the team."

SPECIAL OFFER ON BIGGA GOLF SUITS



£10 off – NOW ONLY £69.95

The best just got even better! For a limited period, these fantastic Golf Suits, designed to keep you warm and dry when it's wet, are yours for just £69.95 each – a saving of £10! Supplied in navy blue with a stylish jacquard pattern, the suit comprises jacket and trousers made from a soft, supple and waterproof material. They feature a BIGGA logo on the arm and leg and are made by Walrus, manufacturers of quality sports clothing.

LIMITED PERIOD OFFER ★ LIMITED STOCKS AVAILABLE

BUY NOW TO AVOID DISAPPOINTMENT – YOUR ORDER WILL BE RUSHED TO YOU BY RETURN!

Please send me..... Golf Suit(s) at £69.95 each including postage

Name:.....

Address:.....

.....Size required:.....

Clip this coupon and post with your cheque made payable to BIGGA, to:

Golf Suit Offer, BIGGA, Aldwark Manor, Aldwark, Alne, York YO6 2NF

Write the details on a separate sheet if you don't want to cut up your magazine

SAVANA TURF GROWERS

THE ULTIMATE SAND-BASED GREENS/TEES

SAVANA TURF GROWERS LTD
NEWMARKET, SUFFOLK
Fax: 0638 560555
(0638) 560111
(0831) 618000

SAVANA TURF GROWERS

AD REF 465

Rolawn®

NEW FOR AUTUMN 1994

MINSTER GREENS TURF

Grown from the very best cultivars:
 40% Bargreen (*Chewings Fescue*)
 40% Barcrown (*Slender Creeping Fescue*)
 20% Bardot (*Browntop Bent*)

Purity and Germination Certificates available

SPECIAL LAUNCH PRICE
£1.25 PER SQUARE YARD (+ VAT)

Available in both standard and big roll
 No minimum order and FREE loan of laying equipment

This new turf grown by Britain's largest turf company from the top cultivars available today represents superb value for money at this price.

Grown on the finest soil in the UK. Free samples on request. Like all other grades of Rolawn turf, Minster is available washed (extra cost).



Rolawn®

Turf Depots are situated throughout the UK

Brentwood.....Tel: 01277 811566	Sheffield.....Tel: 0114 2489646
Bristol.....Tel: 01454 415315	Sidcup.....Tel: 0181 3095988
Edinburgh.....Tel: 0131 3353164	Solihull.....Tel: 01564 784064
Gateshead.....Tel: 0191 4932226	Southampton.....Tel: 01703 740059
Glasgow.....Tel: 0141 7620770	St Albans.....Tel: 01727 822139
Guildford.....Tel: 01483 300908	Warrington.....Tel: 01925 837190
Nottingham.....Tel: 0115 9491108	West London.....Tel: 01895 811544
Oxford.....Tel: 01865 730101	York.....Tel: 01904 608660

Head Office: Elvington, York
 YO4 5AR Tel: 01904 608661

**JUST OUT: FREE DIRECTORY
 OF COMMERCIAL TURF
 LAYERS**

AD REF 34

NEW from

MULTI-CORE

The superb TMI500 Greens/Fairway Aerator



- 1.5 metre coring width
- Variable spacing with a choice of tine sizes. Hollow or solid tine.
- Productivity. 67,000 square feet per hour at 2.6MPH.
- Adjustable depth. Depth capacity to 5 inches.
- Durability. Robust all steel welded frame
- No grease points. Fully sealed throughout.
- Fits your tractor. From 22HP gearbox or hydrostatic.

MULTI-CORE

3 Hillside Close, Euxton, Chorley, Lancs PR7 6JB
 Tel/Fax: (0257) 231861
 For Ireland please contact:
 Croft Turfgrass Industries, Greencroft, Castlebellingham, Co. Louth. Tel: 010 353 427 2163

AD REF 347

Take a leaf out of our book...



TRILO Vacuum Sweepers

Trilo's combination of high power vacuum, brush, scarifier and wanderhose, gives the power and versatility to cope with leaves, thatch, cuttings, hollow cores and litter.

With the new SF150 designed to mount on any golf truck, Trilo now offer five different models – so there's a Trilo to suit your needs!



For hire or sales contact:

MJT Contracts Ltd

50 Bury Road, Stapleford, Cambridge CB2 5BP
 Tel: (0223) 846648. Fax: (0223) 846206

AD REF 382

ADRIAN SIMM



Former Myerscough College student Adrian Simm assisted on about eight golf courses in the north of England before becoming a Maxwell Hart rep. One day he went for an interview in Belgium. He didn't get the job but when that firm bought a golf course in Holland he was offered the chance to show them what he could do. He started at the 27-hole Golfclub de Purmer championship course, about 40km north of Amsterdam, in June 1990 and stayed there until January this year when he moved 30km to Amsterdamse Golf Club. This is an 18-hole parkland course built on polder (reclaimed land). It has 750 members and has been open six years. He came in as course manager over the head greenkeeper which has caused problems but not as many as you might think.

Following a recent remark by BIGGA president Viscount Whitelaw that in years to come it may be difficult to keep the top greenkeepers in this country, Chris Boiling went to Holland to see what it's like for three Brits working abroad.

BILL GARNER

Bill Garner hasn't worked in the UK for ten years. After 16 years at Wilmslow (six as head greenkeeper), he became course manager at The Grange in Dublin. Then he saw a job advertised and in March 1988 became course manager at Hilversumsche, Holland's fourth oldest course.

When I met him, Bill and his staff were busy preparing the 18-hole wooded heathland course for the Dutch Open. He says his aim is to "make it the best course in Holland." He has no plans to return home yet: "The longer it goes on the harder it is to go back."



Holland

Where the grass is greener

The grass is greener for greenkeepers on the other side of the North Sea. After a quick tour of three Dutch clubs maintained by Brits, it's easy to come to the conclusion that:

- Their maintenance facilities rank alongside the best clubs in Britain;
- Their machinery inventory would be the envy of most British greenkeepers; and
- They are treated better. They are treated as professionals by

their employers and by club members, and are paid accordingly.

BIGGA's former education chairman, Huw Parry, the former course manager at Bristol and Clifton who accompanied me on the lightning tour of The Netherlands, agrees: "Their facilities are certainly much better. They seem to be regarded more – especially the expats – as professional people. They certainly have a way of life that is far better than in the

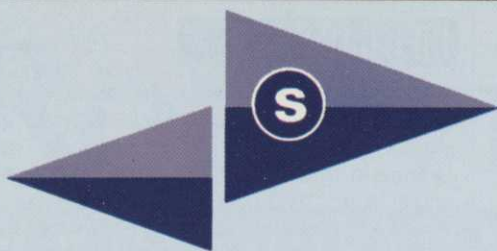
UK, but they seem to be under less pressure at the same time. The standards are different so the pressures are different. The standards in the UK are much greater, generally. I think they've got a much better working environment. They seem to have the machinery to do the job, they seem to have the money to spend on fertiliser, seeds and top dressings.

"I think at the end of the day as long as they're producing a good

product then the money is there for them, whereas back home many greenkeepers are fighting for everything they can get."

Budgets

At the 5859m par 72 Hilversumsche Golf Club Bill Garner says he has a budget but he gets what he wants. "The course comes first here. If I need a machine then it's planned." He even has his own Hydroject 3000 and two Verti-drains. He spends



STANDARD GOLF

WE RAISED THE STANDARD FOR GOLF

A first in the UK The all-American **TOURNAMENT** flag pole

Direct from the USA, now with special adaptor to fit all UK hole cups

Price: £19.95 each plus VAT

The original and still regarded by many greenkeepers as the best:

The Pro II HAND EJECTOR HOLE CUTTER

Available with straight or scalloped shell

Still only £83.94 each plus VAT



TUBE LOCK
FLAGS
20" x 14"
Yellow or red
**£39.70 set 9
plus VAT**
or personalised –
price on application

Special UK hole
cup adaptor

We are only a local call away NOTE NEW ADDRESS

For full details call Paula or Lisa now: 0345 125398

Ask for full colour 1994 catalogue and price list
WINTER TEE MATS 1.5x1.5m from £99 • 1.5x2m from £149 each

Standard Golf (UK) Limited,
Maxwell Hart Business Centre,
PO Box 297, Lightwater GU18 5HJ
Telephone: 0345 125398. Fax: 0276 452616

COLIN FAIRLEY



Colin Fairley – pictured centre with his team – joined Vereniging Golfclub Almeerderhout six and a half years ago and helped with its extension in 1990. The club now has three loops of nine holes, a nine-hole par 3 course and driving range. Although it is situated below sea level on land won back from the ocean, the forest has a very natural look. With several water hazards and an extensive tree-planting scheme they are “working towards parkland”.

Colin, 36, was recommended for the job by the pro whom he had met while greenkeeping in Edinburgh. Colin started as an apprentice at Harburn and worked his way up to first assistant before becoming head greenkeeper at Uphall, where he stayed for six years.

about £80,000 on grass seed, sand and fertiliser.

Colin Fairley says he now spends more on servicing his machinery than he had in his budget at his previous clubs. “It’s a new club run by company managers who realise you get what you pay for,” he adds.

Adrian Simm says at his first club “machinery and money were no object”. He says he had £1m worth of machinery and spent £120,000 a year on grass seed and fertiliser (although you have to bear in mind tax is paid on seed and fertiliser).

Size of team

Bill Garner has seven staff to maintain his 18-hole course. Colin Fairley has a staff of nine looking after 27 holes and par 3 course.

We were shocked when Adrian Simm said the greenkeeping staff at Amsterdamse comprised three greenkeepers and the course manager. Then we found out their only responsibility is the 18 greens, aprons, bunkers, tees and the tee bankings. Everything else is contracted out. The contractor has about 50 employees and looks after several courses and

parks. They cut the fairways, semi rough and rough and carry out other tasks such as verti-draining and overseeding. “It takes a lot of pressure off me,” says Adrian.

Bill adds: “The staff have been good to me. There were some difficulties in the beginning but you could get that going to Scotland.”

Greens committee

Hilversumsche has a greens committee of three who stay for five years. Bill Garner has had the same greens chairman for six years and, he says, “he backs me all the way when it comes to machines.”

Colin works with five other people on his committee, each has his own function. They meet every six to eight weeks.

Amsterdamse has a greens committee of one whom Adrian sees for ten minutes every Monday morning with the general manager.

Life abroad

The course managers we met had a higher standard of living than many of their UK counterparts and their money was far superior, although it’s an expensive place to live. Health insurance is partic-

Where the grass is greener

AMSTERDAMSE



ularly expensive. They also have to pay 50 per cent tax on everything earned over £17,000.

"Compared with Scotland, the standard of living is far higher, otherwise I wouldn't be here," says Colin Fairley.

Adrian Simm says he earns £38-40,000. With holiday pay (equivalent to a month's money) and a Christmas bonus (another month's money) he gets 14 months pay a year. He also gets a travel allowance and his phone bill paid. He works nine hours a day in the summer (7am-5pm) and seven hours in the winter. "The standard of living is much better," he says, "We seem to be able to afford more."

The language

If the signs on the courses are anything to go by, there should be no language problems. The 'ground under repair' and 'next tee' signs were all in English.

Bill speaks Dutch, Adrian doesn't but he says all of his staff speak English. Colin speaks a little Dutch but says half his staff are British anyhow – "there's a shortage of qualified staff in The Netherlands," he says, so he has employed several Brits.

Casper Paulussen, Colin's Dutch deputy, says: "Most Dutch people speak English so there is no problem with language."

Family life

Living abroad is easier for the greenkeeper because he's doing a job he enjoys. The key to success is how the wife and children adapt. "I think if my wife wasn't happy we'd go back, but she is happy. She's made some nice friends – Dutch and English," says Bill Garner who is married with three children – girls aged seven and four and a boy who is nearly two. He says his family have adapted well to life abroad. His children – two of whom were born in Holland – all speak "perfect" English and Dutch.

Adrian is also married with three children (aged eight, five and three) who are learning to speak Dutch.

Colin has a 15-year-old son who speaks fluent Dutch and a 14-month-old girl. His wife works in Amsterdam for Greenpeace, an international organisation that operates in English. "I think working abroad is more attractive to single people or couples with young families. The Dutch seem

to keep themselves to themselves," he told me.

Greenkeeping differences

The greenkeeping practices and problems in Holland are fairly similar to the UK. But, generally, they're a few years behind.

The weather is similar to the Midlands but probably more extreme in the winter and hotter in the summer.

Holland is a 'greener' country than the UK so there are more regulations concerning pesticides, the use of nitrogen and how much water can be used.

Adrian says the maintenance practices are very similar but "we've got more money to play with and full control of the budget."

Recommend it?

"It's a confidence booster – to be able to learn the language, drive on the wrong side of the road. When you can survive abroad you think 'Yeah, that's good'," says Bill.

Colin says: "Yes, but you need commitment."

● *This trip was sponsored by Barenbrug, which provides the seeds for the three courses.*

In 1990 the 60-year-old Amsterdamse Golf Club was forced to move to a new site when a new railway was built on nine holes. The remaining nine holes became the Amsterdam Old Course and a new course – with penncross and pure sand greens – was built in Halfweg. A year and a half after being built they were condemned by club members, the STRI's Jeff Perris and Walter Woods, St Andrews' links superintendent. They agreed the greens would never meet the required standard. The main cause was the very high pH level, a sandbed where the depth ranged from 20-60cm and the almost missing upper humusbed.

A decision was made to start again – at a cost of £100,000. "But we had no choice," said club member and golf course architect Gerard Jol, who was commissioned to redesign the greens and direct the project.

His starting point with the new greens was more pin positions. He also made them smaller (from an average of 690m² to 550m²), "more interesting and harmonised them with their surroundings. They also took the opportunity to add some bunkers around the greens and on two fairways to make "two rather dull holes more challenging."

The new greens were sewn with ordinary fescue, fescue with fine offshoots and ordinary bentgrass.

The work started in August 1992 and was finished two months later. Because the fairways were already sewn with fescue and bent grasses, good temporary greens were constructed on the fairway, so disruption to members was kept to a minimum while the new greens were built and grown-in.

The greens were open for play at the beginning of September 1993 with the mowing height kept to 8mm. In October, two years after the greens were condemned and one year after the reconstruction started, the Netherland Golf Federation gave the club the 'A-status' it desired.

The new products that caught our eye at the 1994 Saltex show at Windsor Racecourse

WHAT'S

Turfmech Accumulator 7/7



Staffordshire company **Turfmech Machinery Ltd** has produced a frame that will enable one tractor to pull two seven-gang mowing units simultaneously. The Turfmech Accumulator 7/7 frame enables one man to mow 30ft (9.5m) in one pass. Turfmech tells us: "The Accumulator's frame geometry has been designed so that mowing performance both in a straight line and when turning at the end of a run remains at peak levels without risk of turf scuffing or the mowers interfering with an adjacent unit." To that end, all PTO drive shafts have wide angle joints to accommodate tight turns and both they and the unit's oversize gearboxes are rated to match the recommended tractor power input of 40-60hp required to tow and operate the 14 individual mowing gangs.

Hydraulic pipework and quick release couplings are provided on the Accumulator's frame to enable lifting of the mowing units for transport. The frame is supported by four large castor wheels and has fully-floating arms to ensure precise, level mowing on undulating or uneven turf. All pivots are provided with greasing points. Price is £5,900.

Kubota's L4200



Kubota unveiled a three-strong range of tractors in the 30-40hp class with features that include fully synchronised transmission, creep gear box and independent PTO. All three models in the Grandel range – the 35.1 (SAE) hp L3300, the 38.5 (SAE) hp L3600 and the 45.3 (SAE) hp L4200 – are powered by Kubota E-TVCS indirect diesel engines which, according to Kubota, "have been designed and developed to meet the world's toughest emission standards and engineered to combine high torque with low noise and vibration."

One of the main attractions of the new tractors for greenkeepers is the fully synchronised transmission. This should facilitate smoother gear changes, allowing the driver to change gear between any of the four speeds in the main transmission whilst on the move. In addition, the hydraulic shuttle allows direction changes between forward and reverse.

The transmission with a range of 16 forward and 16 reverse gears incorporates creep gear box as a standard feature on all three models and is ideal for operations such as verti-draining, planting and trenching.

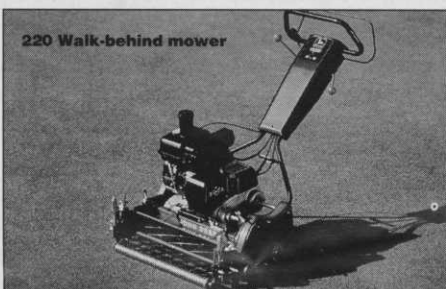
A hydraulically activated independent PTO is common to the range and ensures that

attachments can be easily and smoothly engaged and disengaged to reduce possible attachment damage. It also means that the operator can engage and disengage attachments either on the move or when static.

The Grandel tractor range also has a powerful lift capacity up to 1050 kgs. Prices, excluding VAT, are: L3300 – £13,350 fitted with rollbar, £16,810 fitted with 'Q' cab; L3600 – £17,600 fitted with 'Q' cab; L4200 – £18,740 fitted with 'Q' cab.

John Deere launched the 220 walk-behind greens mower which features a 3.7hp Kawasaki air-cooled engine and an 11-blade, 56cm (22in) reel for improved frequency of cut, at 4.9mm/cut. With an optional speed kit, this figure drops to only 3.9mm/cut. Standard cutting height with a 3mm bedknife is 3.2mm or, with the optional tournament bedknife, only 2.8mm. Attachments include a vertical cutter and rotary brush. Price is £2,611.

Also on show was a new Mauser cab that can be fitted to the John Deere 3235 lightweight fairway mower introduced earlier this year. It will provide the operator with extra comfort and lower noise levels.



Of great interest to our readers in the local authority sector is **Hayter's** latest rugged workhorse triple mowing machine – the Beaver LT312.

The LT312 combines the power of a 29hp Lombardini water-cooled diesel engine with a closed loop, hydrostatic, 2-wheel-drive transmission system to give a variety of grass cutting and transport speeds.

Features of this British-built machine are sturdy construction and a high mowing rate up to 7mph, depending on ground conditions. The 8in cutting reels are offered in 4-, 6- or 8-blade configurations and can be used in either floating or fixed mode for maximum versatility and performance. Cutterheads can be used independently and the overall cutting width is 2.13m (84in).

For added traction in wet or steep conditions a differential lock is incorporated. For travelling between sites it has a road speed of 14mph while the cutterheads lift to give a transport width of 1.4m (55in).

The latest in the Condor line-up, the Condor Hydrostatic, was also on display. This mowing machine complies fully with all the latest CE specifications and boasts a Honda GX340 engine with an output of 11hp. The 36in (91cm) Rotary head featured on the display machine has dual rotating cutterheads, each fitted with cutterbars, variable height of cut and swivel castor wheels for extra manoeuvrability.



The Beaver LT312

Nottingham-based **Rake 'N' Lift & Co** now has more than 100 different types of rakes. There are rakes that look more like shovels with teeth and there are plastic bunker rakes that go by the name of Parthenon and The Zeus.

For courses where vandalism and theft is a big problem Rake 'N' Lift have developed the Caddy Bunker Rake which golfers can take round in their golf bags. There are also rakes for removing water off greens. The Liquid-sand Rake and Squeegee Rake are manufactured in aluminium and have detachable rubber and plastic blades.

NEW

Dennis displayed its new FT610. With a 24in cut, this machine features an interchangeable cassette system and full range of cassette heads. A total of nine different cassette options are available, so you can cut, comb, scarify, de-thatch, brush, roll, sorrel roll and spike with this machine. Other accessories include a non-powered transport carrier and backlapping kit for use on the removed cylinder cassette. Also new is a verti-cutter system that fits into the shell of Dennis' 36 and 30in Premier mowers.

Selection of cassettes available for the Dennis FT510/FT610



Toro's leading greens mower, the Greensmaster 3100, is now available in a three-wheel drive model, the 3100-3WD. Toro sales manager David Cole told us: "The three-wheel drive feature allows operators to reach and mow very difficult areas where additional traction is required to get the job done, such as sloped or stepped greens or steeply elevated tees." He added that the Greensmaster 3100-3WD will especially benefit the many newer golf courses which frequently feature elevated greens or very hilly areas.

Toro also introduced a more powerful replacement for the company's leading lightweight fairway mower and a smaller version of the high capacity Fairway Aerator, for use with smaller tractors. The Reelmaster 5300-D replaces the RM 5100-D and comes with a 32hp Mitsubishi S3L engine, a larger radiator to cool this three-cylinder, 1318cc diesel engine, larger hydraulic reel motors, and larger hydraulic pump. The HC4000 is a mid-sized aerator which can be used with tractors of 25-45hp.

Rolawn's new Minster greens turf, officially launched at the show, has already been laid at Wentworth.

"The cultivars in the new turf exactly match those on our new greens," says course manager Chris Kennedy. The fine textured turf comprises 40% Bargreen (chewings fescue), 40% Barcrown (slender creeping red fescue) and 20% Bardot (browntop bent).

The turf has been installed on the club's new two-tier putting green in front of the new clubhouse.

Pro-Seed Equipment Ltd showed the new Prosweep which has been designed and developed to brush topdressing into the base of the sward quickly, to stripe fairways, and to sweep light leaves and rubbish into rows for speedy collection.

The £17,000 **Ransomes E-Plex**, the world's first all-electric triple greens mower which we featured last issue, attracted a great deal of interest. Greenkeepers from several top clubs were seen pawing over the machine which has no engine and no hydraulic system.

Zeneca Professional Products, formerly ICI Professional Products, celebrated its name change by launching two new publications, a product manual and a product label manual, and two new products: Cleanrun, a feed and weed mini granular conventional fertiliser with an NPK analysis of 9:7:7, and a non-residual systemic herbicide called Touchdown LA for control of annual and perennial grass and broad-leaved weeds in non-crop areas.

Claymore Grass Machinery introduced the Columbia Parcar range of golf cars, people movers and utility vehicles. There is a choice of either 3.2hp electric or 8hp two-stroke petrol models. Both have continuous variable transmission, which eliminates a gearbox. For strength, all the units are of tubular frame construction, and the dual coil springs and shock absorbers help provide a

smooth ride. A camber adjustment system keeps the front wheels flat on the ground to reduce turf compaction or the formation of ruts. To reduce noise, the petrol powered version has foam-lined engine compartment and wheel-wells, plus a tuned exhaust system. In addition, the engine has anti-vibration mountings. A feature of the Columbia Utilitruck is that the shell and frame components are manufactured separately to reduce replacement costs if there is an accident.

Dixon & Holliday Ltd says its new Alpina VIP42 knapsack brushcutter is designed for the professional user who requires a machine which can be operated for extended periods on power demanding operations. Powered by a 41cc two-stroke motor which is made by Alpina themselves, the unit is said to have excellent torque back-up which allows it to be operated at well below maximum revs. The power unit, which is carried on the operator's back in a well padded frame with wide straps, weighs under 7kgs (15lbs). The straps have a quick release clip for ease of putting on and taking off. A 1.5 litre (2.7 pint) fuel tank extends working time, and the captive cap ensures that it cannot be mislaid. A diaphragm carburettor, priming bulb and solid state ignition are designed to ensure easy and reliable starting. The machine is supplied with a 2-line trimmer head and a slasher blade with guard as standard plus tool kit and flexible shaft lubricant.



After years of development, **Major Equipment Ltd** has launched two gang mowers. Both the three and five gang models are land drive with a range of cylinder options. The five gang Ranger has a cutting width of 11ft 4in, cuts at 10mm to 40mm, while the six blade reel cuts at 38 cuts per yard. Features include freewheel sprag type clutch, rear rollers, 18in or 20in spun steel wheels with renewable studs, gang suspension system with adjustable spring pressure to allow the cutting units to follow the ground contours accurately, individual gang steering system to eliminate skidding over turf, and wide low profile carrier frame tyres to prevent marking of turf. Price of the three gang starts at £5,250 and the five gang Ranger with hydraulic lift starts at £11,800, the five gang trailed version starts at £8,900.

The mechanisation revolution of the past 20 years has had a dramatic effect on the daily work routines of today's golf greenkeepers and their staff.

As staff numbers on the majority of courses have declined, equipment complements have gone up, bringing a host of helpful, clever and innovative ideas to ease daily work schedules in the face of more and more rounds of golf.

If the initial purchase price is beyond the reach of the club, deferred payment schemes at attractive rates of interest are available from specialist finance companies, enabling the cost to be spread over several years and paid for out of future income rather than capital reserves or short-term borrowing.

This gives the advantage of immediate use, with the accompanying benefits of improved efficiency and higher standards today, rather than some time in the future when needs, expectations and price may have changed.

Alternatively, many specialist or expensive machines can often be hired for a week or more, giving even the most impecunious clubs the opportunity to use the very latest in golf course maintenance equipment, as and when needed, without high outlay.

Each year, companies from Britain and around the world develop and introduce new products designed to make the turf professionals' task that little bit easier. Some of the products gain immediate approval, while others may take time to become widely known and accepted.

There are those, also, which deserve to do well, but remain undiscovered for one reason or another. Similarly, there are others which should never have seen the light of day in the first place.

Clearing up leaves, litter, scuffed grass and other debris has long been a major consumer of time and labour for those working on large, open expanses of fine turf. One answer is to blow the material into windrows for faster, easier collection by hand, sweeper or vacuum.

Delivering a high speed blast of air at ground level, the Turfmech range of Tornado blowers comes in three versions – two suitable for mounting at the rear of tractors and one at the front of a ride-on mower in place of its out-front rotary deck.

The company's latest model is the TM 300, designed for linkage-mounting on tractors in the 20hp to 30hp class. Powered by the PTO, the blower is supported on two adjustable wheels and has an anti-scalp roller to prevent dam-

Michael Bird takes a positive view

Easy life!



Altrac wheel remover provides effortless removal and refitting of tractor tyres by one person

age to undulating turf. The 100mph air flow can be directed to the left, right or front of the machine.

Anyone who has to change a tyre on larger tractors or a digger/excavator will know that it can be a difficult job on one's own. Add to that the exacting health and safety considerations, and the need for assistance becomes more pressing.

Help is at hand in the form of the Altrac wheel remover, distributed by Burdens Lincolnshire Ltd.

Comprising a wheeled frame with adjustable gripper, the Altrac permits movement of the wheel in every possible plane, enabling it to be removed, moved and replaced without strain or effort.

The unit is ideal for those having to repair punctures, carry out their own service work or inter-

change tyres regularly for different working applications.

Of course, life would be a whole lot easier if punctures could be eliminated in the first place. A proven puncture preventive is OKO, a liquid sealant which is injected through the valve aperture into the tyre before a puncture occurs.

If the tyre is pierced, the escaping air forces the OKO sealant into the hole (max 7mm diameter) to immediately form a strong airtight seal with minimal loss of air.

Water soluble, OKO is easily washed from the tyre to enable a vulcanised repair to be effected, if necessary. The substance will not affect hot or cold cures and is suitable for virtually all pneumatic tyres. It is distributed by BasicRight Ltd and available from machinery dealers nationwide.

Cordless tools have made a great contribution to the ease and speed of carrying out repairs and maintenance to course machinery and equipment.

Claimed to produce up to 25 per cent more power than other cordless drills is the UK designed and manufactured Combi from Elu Power Tools, combining a percussion drill and screwdriver in one compact unit.

Fitted with a keyless 10mm chuck, the current top of the range model is the 235 watt SBA55K, equipped with a 12 volt power pack and 14 torque control speed settings. For ease and economy of maintenance, the drill has replaceable brushes and a fan-cooled motor.

Included in the kit box are a one hour fast recharger, two batteries and a spanner to interchange the chuck and screwdriver bit.

An alternative to the use of electricity, whether cordless or through a lead, is air. Both portable and fixed compressors are finding increasing favour in many workshops as a safe, convenient and effective means of powering tools and other equipment.

One of the largest ranges of air hand tools can be found in the Spaldings catalogue. A number of complete kits are available comprising either petrol-powered, single or three phase fixed and portable compressors complete with a host of air tools and accessories designed for every conceivable workshop task.

Items such as impact wrenches, angle grinders, ratchets, socket sets, tyre gauges and grease guns can all be purchased individually, as required.

Need to hold the work secure? The Elu Superjaws portable workbench and vice weighs just 44lb (20kg) and can be set up in less than 30 seconds. It has foot pedal locking of the fully adjustable vice, which is able to exert very light pressure or up to one tonne of force to suit the item being worked on.

The steel jaws have detachable polyurethane facings and can be adjusted to accommodate work up to (35in) 900mm wide.

For anyone who needs to set the height of cut accurately and evenly on a greensmower, the Accu-Gauge from Turf Machinery Ltd enables fast and precise measurement of cutting heights to within one thousandth of an inch.

Comprising a setting bar with depth indicator gauge, the tool is placed across the rollers and the measurement read directly from the gauge. The Accu-Gauge can be used also to check for wear in the bearings and ovality of the rollers.

Fore!

... all your linemarking requirements choose
ROCOL Easyline

**Purchase 6 cans of easyline and get one other colour
free of charge**

Plus...

**Here's your chance to win a De Vere Leisure Break
at a fabulous De Vere Hotel of your choice.**

**For details contact Joanna Donkin & Quote Ref: GI Leisure Break
ROCOL Safety Products, ROCOL House, Swillington, Leeds LS26 8BS.
Tel: 0113 2866511 Fax: 0113 2872159.**

ROCOL

AD
REF
471



- Meets current Health and Safety regulations
- Mounted/trailed/demountable units
- Choice of tank sizes 200-1500 ltr
- Choice of boom width 4m-12m with optional 3m walk boom



It's the results that count . . .

Contact the experts NOW on 0455 233811

HARDI LTD · 4/5 WATLING CLOSE · SKETCHLEY MEADOWS · HINCKLEY · LEICS LE10 3EX · TEL 0455 233811 · FAX 0455 233815

AD
REF
25

PUT ANDREWS BILLY GOAT ON YOUR WORKFORCE

Let's face it, sweeping, raking and shovelling are dirty and menial jobs that nobody wants.

Our 1994 range of vacuum sweepers, air brooms, truck-loaders and chippers bring your manual workers into the 21st century,

encouraging the vital pride that comes from a good job well done. The relatively small investment is repaid handsomely in a cleaner, better-groomed environment and a happier, more effective workforce.

ASK FOR A DEMONSTRATION ON YOUR OWN GROUND — WITHOUT OBLIGATION. WRITE, TELEPHONE OR FAX.

TERMITE

Here's a really useful and practical combination machine. Besides being the best small vacuum on the market, the Termite swiftly converts small branches (up to 1 1/4 in. dia.) to chips for mulching. Folds for easy transport. 7cu.ft. Trash Bag. Termite enjoys competitive demonstrations!

TRUCKLOADER

The only painless way to load (or unload) large volumes of leaves or other light debris. Model illustrated attaches to any pick-up tailboard without need for tools. 11h.p. B&S engine provides powerful suction through 8in. x 12ft hose, 16h.p. version with 10in. x 12ft hose available.

BLOWER

The quietest and most effective 5, 8 and 11h.p. air brooms available. Only Billy Goat blowers have the unique tangential impellers that move vast volumes of air, enabling bulk leaves and litter to be swept, under total and precise control.

V.Q. VACUUM SWEEPER

With or without stand-on sully. Five forward gears plus reverse; Heavy duty 8h.p. engine; 5in x 11ft Wander-Hose (option); 13in. dia. soft pneumatic Drive Wheels. The V.Q. has been designed to reduce noise and vibration to acceptable levels. The state-of-the-art sweeper for hard or grass surfaces. The one the rest have to beat — No contest!

BOB ANDREWS LTD

1 BILTON IND. ESTATE, LOVELACE RD, BRACKNELL
BERKS RG12 8YT. TEL: 0344 862111 Fax: 0344 861345

THE NEED TO BE

SECURITY CONSCIOUS

Hugh Tilley offers some useful advice on ways of making your maintenance facility and equipment more secure

Theft and vandalism are now a major problem for many golf clubs and while once it was the clubhouse which was the target it has now extended and on some courses it has become impossible for greenkeepers to leave anything out even while they have lunch.

For many the first routine in the morning is to check round to make sure that flags and markers are in position – or that nothing has been dumped. A number of clubs have taken quite radical action to secure their equipment and make everything as vandal-proof as is reasonably possible. This has meant investing in lock-ups, security equipment, lighting and alarms. Small powertools such as brushcutters and workshop equipment are particularly 'nickable' because they are relatively easy to sell, however there has been an increase in the number of larger items such as mowers (including triples) and tractors which have gone missing, and it is assumed that these are stolen to order.

Investing in security may help keep insurance costs down, may be a requirement of continuing cover, or may even allow premiums to be reduced, but in any event it must be worthwhile if only to avoid all the hassle. A few courses, such as St Enodoc in Cornwall (see Page 19), have resorted to employing security guards. Whether such a measure will succeed in other places is a moot point because of the extensive nature of most golf courses and the fact that the presence of a guard may even be an incentive for some to play 'catch me.'

Most vandalism is more annoy-

ing than costly, moved flags, markers thrown around, however damage such as setting fire to sheds or using the greens and fairways as a race track or skid-pan is more serious and can render parts of the course temporarily unplayable. One club which has fared particularly badly in the past is Swinton Park Golf Club in Greater Manchester. Their chapter of major incidents includes having the greenkeepers' shed burnt down with a total loss of equipment, having a stolen Range Rover smash through the gates and badly damage several greens, tees and fairways and having a stolen car fired on a green. The loss of flags and rakes is virtually an everyday occurrence.

Another club with by comparison a considerably less severe problem is Queens Park, Bournemouth. Its problem lies in the fact that it is a public open space, accessible to the malevolent and wicked – as well as to many walkers of dogs. Queens Park were particularly worried by vandalising of their previous hose based irrigation system. Being on free draining heathland, irrigation is vital to the course. As a result, in specifying an all new system they insisted that all sprinklers are of the pop-up type. The Toro 644 units proved to be unintrusive to the point that they often need to be switched on to locate them – and they are certainly impossible to pull up without using a spade. Control boxes local to each green and tee are housed in steel boxes under a substantial cover, and while these can be opened and tampered with, when visited last spring there had been no problems, and this was attributed to the fact that electric wires and contacts are very evident. People, including potential vandals, are frightened by electricity. Queens Park pro-

ected the pump and controls inside a substantial concrete block building within the greenkeepers' compound which has a 2.5m high fence around it. The reservoir is also in the compound and roofed to prevent sticks, cones or stones being thrown into it.

For Swinton Park this level of protection is nothing like sufficient. When they had their shed burnt down with the loss of all their equipment they commissioned a local builder to build an impenetrable building. The resul-

tant 600m² 'shed' has 220mm solid concrete block walls, a 150mm thick concrete roof and no windows – just two steel doors further protected by a lockable steel barrier to prevent ramming. The concrete roof protects an area which is often left vulnerable on many standard buildings which are otherwise secure, while the substantial steel bar in front of the doors pre-empts ramming which often jams steel doors even if it doesn't effect entry. Windows were felt to be areas of great vulnerability – hence their

EQUIPMENT CHEMICALS

**chemicals, tools, fuel
equipment, adhesives
paint, solvents
KEEP THEM SAFE**



**KEEP THEM
SITESAFE**

*Cleveland Sitesafe Ltd, Park Farm, Dunsdale,
Guisborough, Cleveland TS146RQ
Tel. 0642 475009 Fax. 0642 471036
Please contact us for details of the full range of
Sitesafe Storage Units*

EQUIPMENT CHEMICALS

AD
REF
56

A secure storage unit in disguise,
from Groundhog



omission. Swinton has gone further than this and has a full intruder alarm system linked direct to the police.

With the vulnerability of all equipment the start for all security must be consideration of fencing the greenkeepers sheds. A good lockable compound will deter casual vandals, locks bought with multiple keys allow authorised access. An electric fence – as used to contain livestock – is also a useful deterrent, but will need regular maintenance and very visible public warning.

The buildings themselves need to be secure, those 'sheds' normally found on the golf course offer little resistance to the thief. Doors and windows are obvious vulnerable points but reinforcing them may not be worthwhile if walls and roof are only timber or corrugated steel and asbestos. As a result the more effective answer

may be to build or buy a secure building or container and leave the shed unlocked – then no damage is done trying to get in. Many golf clubs have bought old shipping containers and use these for their vulnerable equipment. The problems with shipping containers are that firstly they are unsightly, secondly they are not spacious enough to put tractors and larger mowers in, and thirdly they are liable to be highly corroded, or even full of holes. Purpose made secure storage is

available from a number of companies such as Groundhog, nor is it excessively expensive. This company has recently introduced a half round timber cladding to the range and added a pitched tiled roof which makes the unit visually acceptable, although this adds significantly to the cost because each timber is screwed to the steel shell. Smaller containers may also be useful around the course for temporary tool storage, while lockable boxes to fit pick-up truck, tractor linkage or turf maintenance vehicle may ensure the safety of small hand tools, chemicals and other items which may 'walk' when a greenkeeper's back is turned.

Tractor trailers are not usually at risk, however smaller trailers such as those designed for ATVs and road use are, so too are major items such as mini excavators and similar plant. These can be protected by diverse means, the simplest with trailers being either a wheel clamp or locking the hitch. A better method however is to concrete in a hitching post and lock to this. Tractors are at risk to joy riders even if they haven't the glamour of an XR2. Tractors deserve a little more immobilising than just locking and removing the key – many car immobilisers work. In bad areas if the tractor is not actually removed it will lose 'bits' or have dirt put in the fuel – perhaps in spite because it can't be driven. Batteries are saleable.

Lighting can provide one of the most useful deterrents providing there are likely to be people around to spot a potential intruder or vandal, – there is no point in illuminating buildings just for their benefit! PIR – or passive infra-red, or better, dual technology systems, which automatically switch lights on is particularly effective because it alerts

people, however it can be prone to false alarms and failures if bought cheap and not carefully sited and set-up. Is it realistic to expect a £20 domestic PIR light from a DIY shop to protect £100,000 of equipment? It may be more effective to erect the lights on a tall standard so that it can be seen at greater distances, such lights are also useful to light the area for working in winter.

Of course such lighting is useless for security when the buildings are hidden or remote, as are audible alarms, however PIR and other more sophisticated forms of intruder detection are available to link by radio to a remote alarm in the clubhouse or even to page someone. Proprietary systems can be linked to a private security company, to the head greenkeeper or to the police, however because of the inevitable delay from alarm to response most are of limited use to a golf club. Video surveillance and recording seems to be proving remarkably effective in many places.

The crime prevention officer of the local police is one useful and free source of advice. Also there are a growing number of specialist security equipment suppliers happy to give advice, but don't expect it to be unbiased, after all they are after a sale. Some insurance companies also have advice to give, although this may be negative, perhaps suggesting that items at risk won't be covered if not secured or protected, or only at a higher premium or excess.

The police recommend making equipment identifiable. One idea may be to paint mowers and greens equipment in day-glo colours – they would help the player to see them while making them less valuable to acquire illegally and sell on. Stamping the postcode on the chassis is another simple identification ploy.

GROUND
Secure Equipment Hog

CENTURY WORKS • PENIEL GREEN ROAD
PENIEL GREEN • LLANSAMLET • SWANSEA SA7 9BZ
TEL: 0792 310101 • FAX 0792 310102

Buyers' Guide

The most cost-effective way of reaching readers of Greenkeeper International. Simply ring Bill Lynch on 091 413 7218, Carol Dutton or Louise Lunn on 0347 838581 and ask about an alphabetical category listing: the cost starts from the equivalent of under £25 per month.

Aerators

AERATORS

Problems with dirty water or algae bloom? Let Otterbine clean-up your lakes and ponds.

The world leader in water quality management.

Available from leading irrigation companies. Full details from:

S.G.I. Sales

6 Stuart Road,
Market Harborough LE16 9PQ
Tel: 0858 463153 ♦ Fax: 0858 410085

Agromony

PSD AGRONOMY LTD

A COMPLETE AGRONOMIC CONSULTANCY SERVICE FOR THE GOLF CLUB and GREENKEEPER

- Contract Management of Extensions and New Courses
- Site Management and Problem Diagnosis on Existing Courses
- Technical Advice and Support all year round
- Soil and Turf Analysis



For further information contact:
David Stansfield or John Hacker
42 Garstang Road, Preston PR1 1NA
Tel: (0772) 884450 Fax: 884445

All Weather Walkways

ALL WEATHER WALKWAYS

Limit turf damage with a natural woodfibre walkway.

- Free draining
- Soft and quiet tread
- Engineered particle size
- Blends into the landscape
- Expert construction advice

Dormit

For further information please call us on Cirencester (0285) 860781/2

Animal Repellents

FAIRWAYS

DISCREET CONTROL

CONSULTANCY ENVIRONMENTAL SERVICE & TRAINING

Rabbits & Moles...
Our problem!

SPRINGER HOUSE • WINDMILL LANE
KEMBLE • CIRENCESTER GLOS • GL7 6AN

TEL: 0285 770919
FAX: 0285 770910

SCUTTLE® ANIMAL REPELLENT

Up to ten weeks protection from browsing by rabbits from a single, effective spray application.

For product leaflet and the name of your nearest distributor, call

0734 510033

Fax: 0734 510044

© Fine Agrochemicals Ltd., Worcester WR2 5AA

YOU'RE ONTO A WINNER WITH GREENKEEPER INTERNATIONAL

Find three tiny £50 notes - win a real one, for free!

HERE WE GO with another chance to WIN £50 with Greenkeeper International!

All you have to do is take a look at the £50 note symbol above. Now look through the ads in the Buyers' Guide section and spot THREE of them - they've been reduced in size, but they're there, somewhere!

Write down the names of the three ads where the £50 notes are located and send your entries on a postcard to: Note the Notes Competition, BIGGA, Aldwark Manor, Aldwark, Alne, York, North Yorkshire YO6 2NF, to be received by first post Friday, October 28, 1994. The first correct entry drawn after that date will win £50. It could be YOU! Enter today - and Note the Notes!

Judges' decision is final. Not open to BIGGA staff.

★ The lucky winner from a bulging postbag last month was Mr R Hughes, course manager at Forrester Park Golf Club, Essex. Mr Hughes scoops the £50 cash prize. Will it be your turn for success next month? Get searching - note the notes and be a winner!

Arboriculture



- Tree Spade Hire
 - Semi Mature Trees supplied
 - Mulches supplied
- Ring for colour brochures

Iver, Bucks, SLO 9LA
Tel 0753 652022
Fax 0753 653007

Architects



JONATHAN GAUNT

B.A. (Hons.) Dip L.A.
GOLF COURSE ARCHITECT
From feasibility studies to complete design projects including contract supervision

40C NORWICH ROAD FOREST GATE
LONDON E7 9JH
TEL: 081 555 8577 FAX: 081 519 6163

Associate of the British Institute of Golf Course Architects

Artificial Grass



Worting House
Basingstoke
Hants RG23 8PY
Tel: 0256 811014

- COURSE CONSTRUCTION •
- SYNTHETIC GRASS TEES •
- WINTER GREENS •
- ADVENTURE GOLF •



UNIT 25, COWLING MILL
COWLING BROW
CHORLEY
LANCASHIRE PR6 0QG

Tel: 0257 269983/269069
Fax: 0257 261064

- VERDE TEE FRAME
Steel platform, woven grass top.
 - VERDE WINTER TEE
Generous size, self-install kit.
 - VERDE DRIVING MATS
Top quality - Long Life - Best Prices.
 - ARTIFICIAL GRASSES
 - DRIVING BAYS AND NETS
For club and home use.
- TWENTY YEARS EXPERIENCE SUPPLYING THE BEST SURFACES AT COMPETITIVE PRICES.
Please call for samples & information

Bacteria



GREEN CIRCLE

The biological way to:

- ✓ Degrade Thatch
- ✓ Increase Root Depth
- ✓ Promote Fine Grasses
- ✓ Reduce Fertiliser Needs
- ✓ Combat Disease

Tel: England/Wales: 081 669 0011
Scotland 0764 683250
Ireland 045 61389

Bark



PATHFORM™ Hardwood Chips

Ring for samples and colour brochure

Iver, Bucks, SLO 9LA
Tel 0753 652022
Fax 0753 653007

M & B SUPPLIES

Walkway Chips,
Softwood Bark - All Grades,
Fertilizers, Composts, Peat,
Horticultural Sundries

Baths Road, Longton,
Stoke-on-Trent
Staffordshire. ST3 2JQ

Telephone 0782 593233

Bridges



TOTAL TIMBER ENGINEERING

HICKSON LEISURE DEVELOPMENTS

BRIDGES

Pedestrian and Vehicular

REVENMENTS

SHEET PILING

SHELTERS

HICKSON LEISURE DEVELOPMENTS
NEW POTTER GRANGE ROAD, GOOLE
NORTH HUMBERSIDE DN14 6XF
telephone (0405) 766060 fax (0405) 768622



BUSINESSES

Don't miss your chance to take part in the SHOW OF THE YEAR.
Call Louise Lunn at BIGGA on 0347 838581 for an information pack!

Buildings



**Club Houses
Driving Range Buildings**
GREENKEEPERS STORES DESIGNED TO INCLUDE:

- As Required
- Machinery Storage • Maintenance Workshops
 - Fertiliser and Weedkiller Storage
 - Offices and Staff Mess Rooms
 - Any other specialist usages

FREE initial designs and costings
PLEASE CONTACT

Ivan J Cooper Ltd
Steel Framed Buildings
Moorside Works, Cauldon Lowe,
Stoke-on-Trent ST10 3ET
Tel: 0538 702282 Fax: 0538 702662

Cockleshells



PHOENIX
SPORTS TURF
SERVICES

COCKLESHELLS

Delivered Nationwide

"SUPPLIERS OF QUALITY FINE TURF,
CONSTRUCTION SOILS, ROOT ZONES &
DRESSINGS"

Tel: 0229 468001 Fax: 0229 468002

20 Nelson Street, Dalton-in-Furness,
Cumbria LA15 8AF

Chemical Disposal

CHEMICAL & EMPTY CONTAINER DISPOSAL A PROBLEM?

ENVIROGREEN offer a Specialist
Pesticide Disposal Service for both
full and empty Container disposal.
Also Record Books, Signs, Chemical
& Fuel Stores and Protective Clothing

ENVIROGREEN Limited
The Maxwell Hart Building,
612 Reading Road, Winnersh,
Wokingham, Berkshire RG11 5HF
Registration No: BRL 05342
Tel: 0345 125398

Construction



CONTACT THE PROFESSIONALS

Tim Banks, Secretary, BAGCC,
Angel Court, Dairy Yard, High Street,
Market Harborough LE16 7NL.

Tel: 0858 464346

Michael Lowe & Associates



GOLF COURSE DESIGN,
CONSTRUCTION & CONSULTANCY

Design only, complete construction or
any stage in between, including
Drainage.

Pro-Shop, 72 Bryniau Road,
Llandudno, Gwynedd
Tel: (0492) 876878 Fax: (0492) 872420

G.O.O.L.F LANDSCAPES LIMITED

ASHWELLS ROAD, BENTLEY
BRENTWOOD, ESSEX CM15 9SR

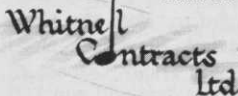
TEL: (0277) 373720
FAX: (0277) 374834



25-27 January 1995,
Harrogate, Yorkshire
Details from Louise Lunn
at BIGGA on 0347 838581

Whitnell Contracts Ltd Golf Course Constructors

Woodlands, Ellis Road
Boxted, Colchester
Essex CO4 5RN
Tel: (0206) 272834
Fax: (0206) 272104
Mobile: 0860 421074



C.J. Collins Construction

Golf Course Contractors

Specialists in complete
construction, or green,
tee, bunker and
drainage refurbishments



Burgess Hill, West Sussex

Tel: 0444 242993
Fax: 0444 247318

Consultancy

David Hemstock Associates

Consultants on:

- Golf Course upgrading
- New Course development
- Specialists in irrigation, drainage, contour and environmental surveys.

Suite 4d, East Mill, Bridgefoot, Belper,
Derbyshire DE5 1XF.
Tel: 0773 827115 Fax: 0773 821083
Mobile: 0850 744957

IMPERIAL LANDSCAPES
Fine Turf & Golf Course Consultants
♦ Tel: (0234) 851651 ♦ (0908) 615680
♦ Mobile: (0836) 767940
Moreton Lodge, Moorland,
Bromham, Beds MK43 8LU

Course Accessories

**WHY DOES
TACIT'S
FLAGPOLE LAST
TWICE AS
LONG?**



THE TOP
SWIVELS

THE BOTTOM
DOESN'T

EAGLES, BIRDIES, FALDOS

Tacit's upright flagpoles
could have the same effect
with your members.

TACIT - Suppliers of
Holecups, Flagpoles and
equipment for
European Ryder Cup 1993
The Belfry.

TACIT

Manufacturers of quality
Golf Course Accessories

Tel: 0788 568818
Fax: 0788 537485

Drainage

SLEATH & SON SPORTSTURF DRAINAGE

Full range of modern equipment providing
UK and European service
Contact Geoff Sleath
Tel: (0709) 862109 Fax: (0709) 862075

AGRIPOWER LTD.

Construction
Drainage
Stone Picking
Verti-Draining

Tel: (01494) 866776



**WHITE HORSE
CONTRACTORS LTD
SPORTSTURF**
OXFORD (0865) 736272



Golf Courses
and
Sportsfields
★ Drainage
★ Construction
★ Water Mains
★ Fin Drains
★ Approved sand,
gravel and pipe
supplied

MEIKLEM

Sunnyside, Blairadam, by Kelty,
Fife KY4 0HY
Tel: (0383) 830217
Fax: (0383) 831771

Driving Range Equipment

RANGE SERVANT UK Ltd.

A NEW UK subsidiary of
Range Servant of Sweden AB,
Europe's market leader for

GOLF RANGE EQUIPMENT

Ball Dispensers, Collectors and Washers.
Play Off Mats and Winter Tee Mats.

AUTOMATIC TEE-UP UNIT

Phone/Fax 0442 834242
Mobile 0585 468624
4 Arden Close, Bovingdon HP3 0QS

DRIVING RANGE SUPPLIES

EASY PICKER Europe Ltd

GOLF DRIVING RANGE EQUIPMENT

Upgrade your practice area using the
world's most popular range ball picker.
Also suppliers of ball dispensers, ball
washers, top quality range mats and
winter tees.

Tel: 0508 528828
Fax: 0508 520909

Environmental Products

*For natural and
environmental
solutions to get
you growing,
contact:*

farmura

Stone Hill, Egerton, Ashford,
Kent TN27 9DU
Tel: 0233 756241 Fax: 0233 756419

Fertilisers



The top organic fertiliser for tees,
fairways and ground under repair

For more information contact
J Russell (Ayr)
Tel/Fax: 01292 267601

Sierrablen Turfmix

Controlled Release Fertilizer
with fast start portion

A single application assures
feeding for the whole
growing season.

High Quality. Proven in Practice

Grace-Sierra UK Ltd

High technology in plant nutrition
61 Loughborough Road, West Bridgford,
Nottingham NG2 7LA
Tel: 0602 455100 • Fax: 0602 455311

Golf Course Supplies

STRIKE TOP TURF

Merchants to the sports
and leisure trade

The complete range under one banner
- if you require it, we will have it
Fertilisers - all grades and types, loams and dressings,
pesticides, top dressing; Rootzone, cockleshell;
Horticultural and agricultural tools, golf course
equipment, work clothing and much, much more!
Call 061 456 7109 or mobile 0831 639798
for up to date list and quote
40 Offerton Road, Hazel Grove, Stockport,
Cheshire SK7 4NL

Martin Brothers

TOP QUALITY, TOP SERVICE

Distributors of

Cheshire Quality
Top Dressings,
Root Zones and
Tee Mixture

MoneyStone
Bunker Sand
Britain's best,
head and
shoulders above
the rest

Par-Link Red
Pathway Gravel
ideal link from
Green to Tee,
any course
anywhere

24hr ACTION LINE
0625 584571

Tell the industry of your products
and services, through an
advertisement in greenkeeping's
top magazine GREENKEEPER
INTERNATIONAL

Grass Cutting Equipment

SAVE
MONEY!



EX DEMONSTRATION
AND TOP QUALITY REMANUFACTURED
GOLF COURSE MACHINERY AVAILABLE
FROM STOCK

TORO JACOBSEN
RANSOMES BEAVER
RYAN HAYTER
sisis CUSHMAN ROYER
VERTI-DRAIN
Loyds ISEKI KUBOTA

UK & EXPORT DELIVERY ARRANGED
Phone for a full catalogue NOW
GREENSWARD
ENGINEERING COMPANY
Manor Farm, Otley Road, Adel,
Leeds LS16 7AL, England
Tel: (0532) 676000

Grass Seed

Turf Systems Management

for
PRE-GERMINATED GRASS SEED
"LIQUID SOD" SPRAY ON GRASS
TOP DRESSINGS
GRASS SEED
FERTILISERS
HERBICIDES
HORTICULTURAL PRODUCTS
and

All Turfcare Materials

Dromenagh Farm,
Sevenhills Road, Iver Heath,
Bucks SL0 0PA
Tel: 0895 834411
Fax: 0895 834892

GERSON Grass Seed

QUALITY AMENITY
GRASS SEEDS
& WILD FLOWERS

119 Holloway Head,
Birmingham B1 1QP
Tel: 021 631 2303
Fax: 021 633 0281

PROBLEM AREAS? Scan-Seeding is the answer

Our unique, mulch-free
hydroseeding system will
solve your seeding problems
on difficult areas such as
banks, slopes or where soil
erosion may occur.

The unique Scan-Binder soil
stabiliser ensures that the
seed stays in position until
germination and
establishment.

Call us now for more
details and a quotation on
0372 749909

SCAN-SEED

(U.K.) LIMITED
Franchises available

Irrigation

HORTECH SYSTEMS LTD.

TURF IRRIGATION
SPECIALISTS

We offer full design, Installation
and After Sales Service
Hortech Systems Ltd,
Hallgate, Holbeach,
Spalding, Lincs PE12 7LG
Tel: 0406 426513

T. & G. TURF IRRIGATION SERVICES

38 Halfpenny Lane, Knaresborough,
North Yorkshire HG5 0NS
Tel & Fax: (0423) 864963
Full member of B.T.L.I.A.

Making sure your Golf Irrigation system isn't a handicap.

Contact: S. Penny
109 Chapel Road, Hesketh Bank, Preston,
Lancs., PR4 6RU Tel: (0772) 813571
Southern Office: N. Ford Tel: (0708) 761717

AQUAPLAST
Putting water in its place

Rain Rotor®

The impact sprinkler for tees,
greens and fairways made in
Britain by
CRESWELL
ENGINEERING LTD
340/342 Cherrywood Road,
Birmingham B9 4UU
Tel: 021 772 2512
Fax: 021 773 9548

Watermation

Manufacturers, designers
and installers of
**GOLF COURSE
IRRIGATION
FOR 24 YEARS**
Tongham Road, Aldershot,
Hants GU12 4AA
Tel: 0252 336838
Fax: 0252 336808

A National Irrigation Service

Free consultation and design
service

Suppliers of quality products for
all types of irrigation

Local installation and
maintenance throughout the UK

Specialists in the refurbishment of
existing irrigation systems

For further information
telephone 0460 241939

OCMIS

Design and service
you can trust

**PAR 4
(IRRIGATION) LTD**

Installation
Sales
& Service
N.E. England, Yorkshire,
N. Lincs, N. Derbys, N. & S. Humber-side
Contact: E.B. & L. Simms
Tel: (0765) 602175 Fax: (0765) 603488
Par 4, Unit 18, Camphill Close,
Dallamires Lane, Ripon,
N. Yorks HG4 1TT

MIDLAND IRRIGATION

AN INDEPENDENT IRRIGATION COMPANY
2 Fairedene Way, Great Barr,
Birmingham B43 5JS
Tel: 021 358 1246
Fax: 021 357 6789
DESIGN • SUPPLY
INSTALLATION • SERVICE
Full member of B.T.L.I.A.

B SERVICE **TORO** IRRIGATION
**BELL TURF & IRRIGATION
SERVICES**
East Midlands Area
Installation, Sales and
Service
Everton, Doncaster, DN10 5DR
Tel: (0777) 817410

Hunter
The Irrigation Innovators
Gear driven sprinklers
including the new golf range
available from
S.G.I. Sales
6 Stuart Road,
Market Harborough,
Leics LE16 9PQ
Tel: 0858 463153
Fax: 0858 410085
NOW YOU HAVE A CHOICE!

BRITISH OVERHEAD IRRIGATION LIMITED

Tel: (01932) 788301
Fax: (01932) 780437

INDEPENDENT CONTRACTORS
FOR SPORTS TURF IRRIGATION
SYSTEMS, UPDATES AND
COMPLETE PROJECTS
BEST BUY B.O.I.L.

EXPERIENCE - EXPERTISE
CARE - SERVICE
since 1923
Founder Member BTLIA

**Automatic Watering
Systems for Sports
and Leisure Grounds**
• Designed • Supplied • Installed
GLEN HEAT & IRRIGATION
Pinchbeck, Spalding, Lincs.
Tel: (0775) 722327
Fax: (0775) 725444

Lake Construction



GT GROUP
LEAST COST
WATERPROOFING OF
LAKES AND RESERVOIRS
- using lining membranes and associated
geosynthetic materials.
• Comprehensive service available to
owners/architects/consultants and contractors.
GT GROUP, Nags Corner, Wiston Road,
Nayland, COLCHESTER CO6 4LT
For technical and sales enquiries
Tel: (0206) 262676
Fax: (0206) 262998

Machinery Repairs

LAMP

HORTICULTURAL ENGINEERS
Service and repairs of all makes
of professional grass cutting
equipment for the sports and
leisure industry
Contact Andrew or Rosemary
Tel/Fax: 0827 284415
Unit 7, Roman Park, Tame Valley Industrial
Estate, Wilnecote, Tamworth, Staffs B77 5DQ

Mower Spares

MOWER ACCESSORIES LTD

Manufacturers of high quality lawnmower blades and cylinders. Suppliers of spares and accessories.

65 Forncett Street
Sheffield S4

Tel: 0742 765825
Fax: 0742 765855

Netting



- ★ Germination Sheets
- ★ Frost Protection Sheets
- ★ Target Nets
- ★ Perimeter Netting
- ★ Ball Stop Netting
- ★ Rain Covers
- ★ Mobile and Static Nets

Available from all good distributors
Longbrook House, Ashton Vale
Road, Bristol BS3 2HA
Tel: 0272 669684

pH Adjustment

High pH?

Liquid Sulphur

is a unique source of flowable sulphur for use as a nutrient additive or pH adjuster.

Available exclusively from

Liquid Sod
and its distributors.

Ring 0963 251129 today for more information and your own FREE pH adjuster chart.

LIQUID SOD, LINDEN VIEW,
REDWING ROAD, MILBORNE PORT,
SHERBORNE, DORSET, DT9 5DB

Railway Sleepers



10" x 5" x 8 1/2"
FROM £6 EACH
Hundreds of uses in:
◆ Golf Courses ◆ Civil Engineering
◆ Farming ◆ Landscape Gardening ◆ Fish Farms
◆ Garden Centres

ASHWELL MAKE IT EASY
◆ Sale, hire or buyback ◆ Choice of new or used
◆ Generous bulk discount ◆ Cutting service
25p ◆ Sale or return ◆ Delivery

ASHWELL

Tel: 0375 892576 Fax: 0375 891736
Unit G, Criton Ind. Est., Stanford Rd, Orsett, Essex RM16 3DH

RAILWAY SLEEPERS
8'6" x 10" x 5"

CROSSING TIMBERS
12" x 6" up to 16' long
Price quoted for number required

TELEGRAPH POLES
NEW AND SECONDHAND

Tel (0233) 625121 or 620277

Faggs Fleet, Whitfield
Road, Ashford, Kent

Sand/Silica Sand



Complete range of damp and dried graded silica sands for all purposes.

Contact John Deavin at
Eastern Way Works,
Eastern Way, Heath & Reach,
Leighton Buzzard,
Beds LU7 9LF
Tel: (0525) 237911
Fax: (0525) 237991

Tell the industry of your products and services, through an advertisement in greenkeeping's top magazine GREENKEEPER INTERNATIONAL

Drinkwater Sable Ltd

(EBENEZER MEARS)

KINGSLEY FINE WASHED SAND
for Tees · Greens · Bunkers
and drainage sands and shingles

Wintersells Road, Byfleet, KT14 7AZ

0932 345616

ARC BUCKLAND
Southern INDUSTRIAL
MINERALS

Sand and Silica Company
COMPLETE RANGE OF
HORTICULTURAL SANDS

Contact Lynda Jordan
Buckland Sand & Silica Co.
Reigate Heath, Reigate,
Surrey RH2 9RG
Tel: (0737) 240151

GRUNDON

NOW SPREADING
IN YOUR AREA

Top Dressing
Bunker Sand
Root Zone
Tees Dressing
All Aggregates
Path Gravels
Cockleshell

NEW HOTLINE-NUMBER:
Contact Gordon
on 0367 244078

TOP GRADE TOP DRESSINGS

Lime free dried & washed sands
Lime free moist & washed sands
Bulk 24 hour delivery service

ARNOLD

SANDS FOR INDUSTRY

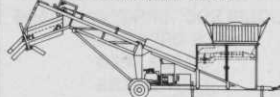
Arnold Sands Ltd
PO Box 542
Leighton Buzzard
Bedfordshire LU7 8FH
Tel: (0582) 477322
Fax: (0582) 661476

Screeners/Shredders

GRADE ALL

GRADEALL INTERNATIONAL LIMITED

Manufacturers of the SS100
Screener/Shredder



9 Farlough Road, Dungannon,
Northern Ireland BT71 4DT

Tel: 08687 40484 · Fax: 08687 48823

Seats

Gloster

FINE TEAK FURNITURE



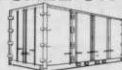
Seats, tables, chairs,
benches,
planters and litterbins made
from plantation
grown teak. Listed in
the Good Wood Guide.

Send for brochure

D-Scan (UK) Ltd Concorde Road,
Patchway, Bristol BS12 5TB
Tel: 0272 315335 Fax: 0272 315334

Secure Storage

SECURE STEEL LOCK-UPS
(Ex Shipping Containers)
FOR SALE OR HIRE



Delivered to your golf club or premises by self
unloading lorries within 24 hours (Mainland UK)
10' x 8', 20' x 8' and 40' x 8' insulated or uninsulated.

IF YOU NEED ECONOMIC SECURE STORAGE
RING NOW FOR PROMPT
EFFICIENT SERVICE

LAWRENCE CONTAINERS
Tel: 0622 820308
Fax: 0622 820300

Tee Mats

LINKS LEISURE

PRO-TEE ALL-WEATHER
GOLF MAT

Robust,
durable
GRC base
with three
replaceable
artificial turf
sections.



The ideal
substitute
for the
natural
grass tee.

Tel 0948 663002
or Fax 0948
666381 for details



- Suppliers of the Dunlop Winter Tee & Practice Mat
- Golf Course Furniture
- Driving Range & Practice Ground Equipment

Tel: 01704 541055
Fax: 01704 536594

TEEMASTER

BY PRO-AM GOLF
SERVICES LTD

YOUR WINTER AND
PRACTICE TEE SPECIALISTS

Tel: (0446) 700130/733063

Pro-Am Golf Services Ltd.,
Unit 20, Atlantic Trading Estate,
Barry, South Glam., CF63 6RF

TUFTURF

ARTIFICIAL GRASS TEE MATS,
DRIVING RANGE MATS AND
PUTTING SURFACES FROM

CARPETITION LTD

14 Kaffir Road, Edgerton,
Huddersfield HD2 2AN

Tel: (0484) 428777 Fax: (0484) 423251

Tree Planting

Tree Planting Service
Large Grants Available

Eamonn Wall & Co.
Woodland Design and Management
22 West Burnside, Dollar

Tel: 0259 743212



Eastcote
Nurseries
(Solihull) Ltd

- ★ Tree Spade hire
- ★ Tree moving
- ★ Semi mature trees

Nationwide service

Hampton Road, Barston, Solihull,
West Midlands B92 0JL

Tel: 0675 442033
Fax: 0675 442324

Trenchers

TRENCHERS FOR HIRE

Width: 15cm-30cm
Depth: up to 122cm

Trenchex Plant Sales

Tel: 0889 565155 Fax: 0889 563140

Turf

EXCELLENCE
THROUGH
EXPERIENCE

Shelford

TURF FARMS

Beech Tree Farm, Shepreth Road,
Foston, Cambridge

Tel: (0223) 871814. Fax: (0223) 872354



Growers of consistent quality turf in
either big or small rolls for landscapers,
amenity users and golf courses

Tel: 0728 688 984
Fax: 0728 688 949

Fir Tree Farm, Blaxhall, Woodbridge,
Suffolk IP12 2DX



TILLERS

Growers of high quality turf supplied nationwide in standard and big rolls. All turf grown on sandy, stone-free soil.

For more information, contact
Tim Fell at:

Tillers Turf Company Ltd
Castlethorpe, Brigg,
South Humberside DN20 9LG

Tel: 0652 650555
Fax: 0652 650064

INTURF

GROWERS AND SUPPLIERS OF HIGH QUALITY CULTIVATED TURF FOR ALL APPLICATIONS AND APPOINTED OFFICIAL TURF PRODUCERS TO WEMBLEY STADIUM

Please contact Head Office for more information:

THE INTURF GROUP

Regent Street • Pocklington • York YO4 2QN
Telephone 0759 304101 • Fax 0759 305229



Grasslands

Specialist Seed Grown Turf Producers COVERING THE SOUTH
Grasslands Turf Farm, Ashford Road,
New Romney, Kent TN28 8TH
Tel/Fax: (0797) 367130

TURF GROWN TO YOUR SEED SPECIFICATION

or from our stock
ALL GROWN IN STERILE COMPOST

Supplied nationwide

GREENKEEPER LTD,
Shelford Manor, Shelford,
Nottingham NG12 1ER

Tel/Fax: 0949 21144

Tip Top Turf.

Seed grown turf available in one sq yd or large 25 sq yd rolls with laying machines or service available.

Tel: 0908 270701 • Fax: 0908 374889

Turf Dressings

FEN TURF DRESSINGS LTD

for Fendress Top Dressing

- Fendress Superfine
- Economy Dressing
- Rootzone Mixes
- Screened Fensoil • Screened Peat
- Screened Loam • Kiln Dried Sand
- Bunker Sands



Tel: (0858) 464346/433003
Fax: (0858) 434734

GREENBASE ECOLOGICAL LIMITED

The ProBase range of Products for Turf Dressings and Construction materials. Lightweight. User friendly and economical

Tel: 0427 811738 • Fax: 0427 810405

Rufford

TOP-DRESS SUPPLIES

Britain's No. 1 for
QUALITY • SERVICE •
SHEER VALUE FOR MONEY

Fairway House, South Stage, Broadway,
Salford Quays, Manchester M5 2UO
Tel: 061 877 8550 Fax: 061 877 8554



BAILEY'S OF NORFOLK

supply

Professional Turf Dressings for the Profession

GOLF TURF DRESSINGS

Approved formulations for use in Construction and on the finest greens, tees and fairways.

SAND

All requirements catered for including lime free. Kiln dried sands available.

SCREENED TOP SOIL

Including the finest Black Fenland Soil. Screened loams to customers' individual specifications.

We also produce and supply root zone mix and always have vast stocks of cockle shells for immediate delivery

DELIVERIES NATIONWIDE

BAILEY'S OF NORFOLK

Brick Kiln Road, Hevingham,

Norwich, Norfolk NR10 5NL

Tel: 0603 754607

Mobile: 0860 661603

BL BOUGHTON LOAM LTD.

For
TURF DRESSINGS
ROOT ZONE MIXES
SCREENED TOP SOILS
BUNKER SANDS
HORTICULTURAL
COMPOSTS

Telford Way, Kettering,
Northants

Tel: 0536 510515

Turf Maintenance



PROFESSIONAL TURF MAINTENANCE AND RENOVATION EQUIPMENT AVAILABLE FOR HIRE

J. WOOD & SON

(BILSDALE PLOUGHS) LTD

Tel: (0377) 253313 Fax: (0377) 257465

DRIFFIELD • RYEDALE • YORK

Tyres

FLOTATION TURF TYRES

- Wide Flat Threads
- New & Used Custom Wheels
- Bargain Prices

ROTOTYRE LTD

Graveyard Lane, Ormskirk, Lancs

Tel: 0695 421100 Fax: 0695 424265

Sam Moreton & Sons TURF TYRE

Turf Tyres of all makes to fit any machine. Wheels made to customer requirements.

Enquiries 0926 632269

Fax 0926 632023

Orders 0926 613737

Nationwide delivery service

Vertidrain Hire

MIDLAND TURF AERATING SERVICE



- Verti-Draining • Hollow Coring with Ryan GA30
- Core Collector • Golf Tee Construction
- Bunker Alterations
- Over-Seeder

Tractor Hire • Competitive Prices • Professional nationwide service.

Tel/Fax 0922 417567

Charles Frost



VERTIDRAIN Hire Co

VERTIDRAIN AND HOLLOW CORING MACHINES AVAILABLE FOR HIRE

Contact: Peter Holmes, 10 Carson Road, Gainsborough, Lincs DN21 2RE

Tel: 0427 613035

Mobile: 0831 359394

PARKER HART

Verti-draining, hollow coring, conventional and hydro-seeding throughout the South East

Complete range of turfcare machinery available for hire

Competitive rates
Reliable equipment
Experienced operators

Call Karen or Anne

081 337 7791

HERONFIELD HIRE

(Solihull)

Vertidrain, Moore Sportsfield Over-Seeders, Verti Over-Seeder for Greens & Tees, Toro Aerators, Case Trenchers & Sportsfield Slitters etc.

Contact: Doug or Ron Johnson

Tel: (0564) 772597

Fax available

Richard Campy

For vertidrain, hollow coring, scarifying, and overseeding requirements.

1.5m and 2.5m vertidrain

Greencare Corers

Charterhouse Vertiseed

Marton Hall Lane, Marton,

Macclesfield.

Tel: 0260 224568

Fax: 0260 224791



ROSS OLIVER SPORTS GROUND CONSTRUCTION AND MAINTENANCE

- VERTI-DRAIN for Greens and Sportsgrounds
 - STONE PICKING • RYAN HOLLOW TYNER
 - SAND SPREADERS • DIRECT DRILLS
- Greystones, Trebudannon, Cornwall TR8 4LP.
Tel: (0841) 540222 Fax: (0637) 881057

E&S SPORTSGROUND CONTRACTORS

We're No. 1 for Vertidrain, Hollow Tining and Core Collection

For competitive rates and a professional service, contact

RICHARD VEITCH
0734 795454

The Fairways, King Street Lane, Winnersh,
Wokingham, Berkshire RG11 5AX
Fax: 0734 795353



- Verti Drain Hire • Hollow Coring
- Deep Spiking • Tractor Hire
- Full range of Landscape Equipment

YORKSHIRE'S ONLY AGENT FOR WIEDENMANN TERRA SPIKE

SPEN GROUND CARE SERVICES

Unit 7, Valley Road, Liversedge,

West Yorkshire WF15 6JY

0924 401522 • 0836 722080

SEWARD TURF MAINTENANCE

CONTACT THE PROFESSIONALS

Ten years experience using only the best

2 greens verti-drains

(18 greens in 2 days)

Half-inch tines at 2x2 spacing

Fairway verti-drain

Coremaster complete with collector

Fairway overseeder

Contact Michael Seward

York (0904) 765949 night or day

WORTH DRAINING

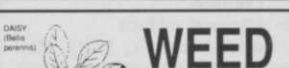
VERTIDRAINING and HOLLOW CORING HIRE with the RYAN G.A. 30

Contact Peter Bloodworth

WORTH DRAINING

Cornbecks Farm, Irnham, Grantham,
Lincolnshire Tel/Fax: (0476) 550266

Weed Killing



WEED FREE (BRACKNELL)

Professional Weed Killing & Associated Turf Services

MIKE SEATON F.Inst.G(Dip)

Tel: (0344) 481011

Fax: (0344) 300052

Mobile: (0850) 300104

You're at the end of the Buyers' Guide section — if you haven't found the ads with the 3 symbols in yet,

TRY AGAIN:

IT COULD BE

WORTH

£50

TO YOU!

Classified

Machinery For Sale

G E Adamson Grass Machinery

Ransomes 3 set Magna or sports trailed – new cylinders£2500
 Ransomes 5 set Magna or sports trailed – new cylinders£4175
 Ransomes Super Certes 51 as new c/w comb and wheels£1250
 Ransomes 180D 2 cyl Diesel fixed or floating heads£3950
 Compact Tractors and Machinery
 All prices inclusive of transport but subject to VAT.
Tel/Fax: 0995 640180

QUALITY REBUILT GROUND CARE MACHINERY

Iseki TU 318 Tractor 21hp, cab, creep gearbox, ex. demo: £5,995 +VAT

★ Gang Mowers ★ Triple Mowers
 ★ Cylinder Mowers ★ Aeration Equipment ★ Scarification & Collection Equipment ★ Nationwide Delivery, Export by Arrangement

EFG GARDEN MACHINERY
 Tenterfields Business Park,
 Luddendenfoot, Halifax HX2 6EJ.
 Tel: 0422 882165
 Fax: 0422 886014

1x T/C10 Twose Soil Conditioner: £500

x2 F3/222 Turf Irons SR-H3: £2,000 each

Contact The Head Greenkeeper 0865 390864

Drainage

DAISY D



- Special Drainage for Golf Courses
- Minimal surface disturbance
- Get your course back in use – FAST

Contact Daisy D Ltd
 West Mains,
 Gleneagles PH3 1PJ
 Tel: (0764) 682202

Purdys Grass Machinery

JACOBSEN DISTRIBUTORS
 Largest selection of professional used and reconditioned grass machinery in the Midlands

Aebi TT 77hp complete with flail and rotary.

Ransomes Hydr Mtd 5.

Ransomes 213 D's and 350 D's.

Trailled gangs. Howard Gem.

Kubota 8200 with set of 3 Hayter Wrap Round. Triples.

CONTACT
CHRIS BRYDEN
 0777 704275
 EVENINGS: 0602 209401



Breakwell's

Ransomes Commander DX3500 6 knife fixed headex-demo from £25,000
 Ransomes Parkway 225 6 knife fixed headex-demo from £12,000
 Ransomes GT Champion with verti-groom unitsex-demo from £5,000
 Ransomes Fairway 300 .ex-demo from £19,500
 Ransomes 180D 7 knife and boxesex-demo from £8,250
 Ransomes T23D Rotary 60" rear dischargeex-demo from £8,000
 Ransomes 180D fixed head units onlyex-demo from £875
 Ransomes Greens Pro 56 transport wheelsnew from £1,800
 Ryan GA30 Aeratorex-demo from £7,500
 Ryan Matawaynew £1,900
Telephone: 021 733 3344

Trees

LARGE TREES IDEAL for GOLF COURSES

Many varieties
 Nursery seconds

From £3.00

Ramswood Nurseries

Tel: 0925 821002

Fax: 0925 821022

Job Shop

Senior Deputy/First Assistant Greenkeeper, fully qualified, with over 18 years experience, seeks similar position, good golfers (within 30 miles of London).

Experienced in spraying, irrigation, construction, all aspects of golf maintenance, modern and traditional.

Box No JS 9/94, BIGGA, Aldwark Manor, Aldwark, Ane, York YO6 2NF

Will you soon qualify? Are you living abroad but looking to move to the UK? Perhaps you just fancy a new job?

For only £19.95, this space could be working for YOU!

Job Shop

Call Carol or Louise on 0347 838581 for details of Greenkeeper International's new Job Shop feature

RECRUITMENT



Betchworth Park Golf Club

Due to the retirement of the Head Greenkeeper the club seeks to appoint from 1st April 1995 a

COURSE MANAGER

for an established H S Colt designed parkland course.

Applicants must possess recognised qualifications as well as an established career development in modern course management preferably gained on parkland courses.

The ability to lead and motivate an established team of greenstaff and organise work programmes, is essential.

A practical knowledge of modern greenkeeping machinery, current Health and Safety Regulations and budgetary control skills are required.

Remuneration is negotiable and will include accommodation.

Apply in confidence with full CV to:

**The Secretary, Betchworth Park Golf Club,
 Reigate Road, Dorking, Surrey RH4 1NZ**

Harpenden Golf Club

are committed to an ambitious five year plan to develop further this already prestigious course.

Required: an

EXPERIENCED SENIOR GREENKEEPER

To work directly with the Course Manager on the full range of both maintenance and development. This is a permanent, full-time post for an ambitious, forward-thinking professional.

Applicants must be suitably qualified and have a proven record in course and machinery maintenance.

Application forms can be obtained from:

**The General Manager, Harpenden Golf Club Ltd.,
 Hammonds End, Redbourn Lane, Harpenden, Herts AL5 2AX**

ROTHERHAM GOLF CLUB LTD

require a

HEAD GREENKEEPER

For an 18 hole parkland course. All applicants must hold City & Guilds Phase II and III and PA1 and PA2 Spraying Certificate. The ideal candidate must have the ability to lead and motivate the staff, have a sound knowledge of the use and maintenance of modern machinery, organise and carry out work programmes and maintain the course to its already high standard.

Accommodation is not available. Salary negotiable.

Apply in writing with full CV to:

**The Secretary, Rotherham Golf Club, Thrybergh Park,
 Rotherham, South Yorkshire S65 4NU**

THE INTURF GROUP

QUALIFIED GREENKEEPERS/ GROUNDSMEN REQUIRED

Skilled staff required for sports and amenity turf maintenance and installation works throughout the British Isles and possibly abroad.

As one of Europe's best respected turf growers and developers of the Big Roll and Turf Tile systems, Inturf is seeking staff with experience and qualifications in turf management to work at or from two of its production nurseries situated at Grantham and York, and to undertake turf laying on sportsgrounds and landscape sites.

Duties will be varied, extremely interesting and undertaken to the highest standards of groundsmanship. Many of the sites worked on are world famous and it is important that any person applying must be of presentable appearance, of pleasant manner, honest, physically fit and energetic.

All necessary training will be given. Good conditions. Salary/wages negotiable and a company vehicle provided when or where appropriate.

Applications in writing please to:

Derek Edwards
Turfgrass Services International Limited
A Division of the INTURF Group
Regent Street, Pocklington, York YO4 2QN
Telephone 0759 304101 Facsimile 0759 305229

Colony Club Gutenhof, Vienna, Austria

require a

IRRIGATION MANAGER

for its 5 year old 36 Hole Golf Complex

The successful candidate must be suitably qualified and experienced in the use and operation of a

Hydraulic SC3000 Toro Irrigation System

Salary offered is OS 13,000 net paid 14 times per year. Free accommodation at the course.

Membership of the Club.

5 weeks vacation per annum.

Interviews will take place in London
- December 1994.

Apply in writing or fax your CV to:

Gary Moseley, Director of Golf
Colony Club Gutenhof, Golfplatz Himberg,
2325 Himberg Austria
Tel: 010 43 2235-88055 or 010 43 663-9194660
Fax: 010 43 2235 8805514



Huddersfield Golf Club Ltd

HEAD GREENKEEPER

Applications are invited for this appointment at Huddersfield Golf Club, one of Yorkshire's Championship Courses, and the home of Yorkshire Golf.

To be considered applicants must show that they have:

- ◆ successfully completed all relevant theoretical/academic training.
- ◆ a minimum of ten years practical experience in the application of machinery, fertilisers and chemicals.
- ◆ a tidy, methodical approach to course and workshop management and paperwork.
- ◆ the ability to lead and motivate a team with firmness and fairness.

Pay negotiable.

Applications by CV with brief covering letter to:

The General Manager
Huddersfield Golf Club Ltd
Fixby Hall
Lightridge Road
Fixby
Huddersfield HD2 2EP

HEAD GREENKEEPER

We have an immediate vacancy for a Head Greenkeeper for a new 9 hole course in the North East of England due to be opened in Spring 1995.

The successful applicant will have the following skills, knowledge, experience and personal qualities, which will be rewarded accordingly:

- ◆ Greenkeeping qualifications.
- ◆ Management skills of planning, directing, man management along with the necessary personality to work in a large organisation.
- ◆ Experience in bringing a course into play and some experience in construction.
- ◆ Energy and enthusiasm to assist in the development of the course and a further 9 holes to be constructed.
- ◆ Machinery maintenance and budget preparation and control.
- ◆ A good standard of golf.

If you are looking for a new and exciting challenge and have the necessary self motivation please apply with full details of career and qualifications to date to:

Box No. R/2/94,
BIGGA, Aldwark Manor, Aldwark, Alne, York YO6 2NF



High Post Golf Club

invite applications for the position of

HEAD GREENKEEPER

for an 18 hole downland golf course situated in Wiltshire between Salisbury and Amesbury.

The successful applicant will head a staff of four, answering directly to the Club Manager. He or she will have a sound knowledge of turf culture and be fully conversant in the use and maintenance of modern course machinery. He or she will also have an awareness of and be responsible for relevant Health & Safety, legislation on matters pertaining to course husbandry.

The salary and benefits are commensurate with this important post; family accommodation is provided in a modern three bedroom bungalow adjacent to the clubhouse.

The new Head Greenkeeper is required to commence his or her duties between 1st December and 31st January, the accommodation being available immediately.

Application in writing with full CV should arrive by 1st November addressed to:

**The Manager, High Post Golf Club Ltd,
Great Durnford, Salisbury SP4 6AT**

Newport Golf Club

require an

ASSISTANT HEAD GREENKEEPER

Applicants should be qualified and have sound practical experience and the ability to motivate staff.

Excellent prospects with modern machinery for enthusiastic applicants seeking career progression.

Apply with CV to

**The Secretary,
Newport Golf Club, Great Oak,
Rogerstone, Newport, Gwent NP1 9FX**

Bedale Golf Club Ltd

requires an

EXPERIENCED HEAD GREENKEEPER

For an 18 hole parkland course.

Applicants must be suitably qualified and possess the necessary management and supervisory skills with appropriate greenkeeping qualifications and detailed knowledge of the use and maintenance of modern machinery.

The candidate must have the ability to lead and motivate staff, organise work programmes and maintain health and safety requirements.

Salary negotiable. No accommodation available.

Apply in writing with full CV to:

**The Secretary
Bedale Golf Club Ltd
Leyburn Road, Bedale, North Yorkshire DL8 1EZ**

Berliner Golf Club Gatow eV

requires a

HEAD GREENKEEPER

For 9 hole course in Berlin, Germany.

Applicants should be fully qualified in all aspects of greenkeeping maintenance, have a good knowledge of modern machinery and possess sound management and supervisory skills.

Salary negotiable. Position available now.

Apply in writing with full CV and references to:

**Mr J Rumney, Manager, Berliner Golf Club Gatow eV,
Kladowerdamm 182-288, 14089 Berlin
Fax 01049 30 365 7660**



are looking for

Self Employed Agents

in many locations to join our growing Sales Force selling top quality products to the Leisure Sector.

We operate throughout Great Britain supplying Oil, Greases, Fuel Treatments and a full range of machinery maintenance products and equipment.

If you are comfortable talking about engineering and equipment matters and you have current experience selling to the Leisure Sector, call

**John Wood, Marketing Director
at our Keighley Head Office on 01535 611103**

Ballyheigue Castle Golf Club

a new 9 hole golf course in Co. Kerry, Ireland, the construction of which is nearing completion, requires a qualified person, experienced in all aspects of turf and machinery maintenance to be

HEAD GREENKEEPER

The position may suit a young person looking for their first head position.

Salary and conditions negotiable.

Apply in writing with CV and references to:

**Roger Jones Golf Associates
Allman House, Tralee Road, Killarney, Co Kerry, Ireland**

St Michael's Golf Club, North East Fife

require a

HEAD GREENKEEPER

The club is in the process of extending its course to 18 holes. Applicants must be qualified greenkeepers and have experience as either head or assistant greenkeeper, the ability to manage, control and motivate staff, organise work programmes and maintain health and safety requirements and must have a practical knowledge of modern techniques of course maintenance, including machinery maintenance and care of irrigation systems.

Closing date for applications: 29 October 1994. Interviews: 7 or 8 November. Salary negotiable. Living accommodation cannot be provided.

**Apply in confidence with full CV to:
The Secretary, St Michael's Golf Club, Leuchars, Fife KY16 0DX**



Basingstoke Golf Club Limited

requires a

HEAD GREENKEEPER

Applicants must be suitably qualified and experienced in all aspects of Course Management and have the ability to lead and motivate staff, along with the energy and enthusiasm to develop and implement a plan of Course improvement.

Salary negotiable. No accommodation.

Please apply in writing with full CV to:

**The Secretary/Manager, Basingstoke Golf Club,
Kempshott Park, Basingstoke, Hampshire RG23 7LL**

Closing date: 30th October 1994

Essex

New parkland Golf Course requires

HEAD GREENKEEPER

Applicants must be experienced in all aspects of modern course management and have the ability to lead and motivate staff as part of a team.

The position requires a high standard of excellence and commitment.

Salary negotiable but will not include accommodation.

Applicants in confidence to:

**Box No. R/3/94
BIGGA, Aldwark Manor, Aldwark, Alne, York YO6 2NF**

Harleyford Club

invites applicants for the position of

HEAD GREENKEEPER

The construction of this new and exciting 18 hole course has just started and is situated by the River Thames just outside Marlow.

The successful applicant will be required to assist during the grow-in period and to help recruit staff and lead a team capable of maintaining a very high standard golf course.

All applicants must be experienced in modern greenkeeping methods with good knowledge of machinery and irrigation. They must also hold all appropriate qualifications and certificates.

Apply in writing with full CV to:

**Brian Folley, Harleyford Estate,
Henley Road, Marlow, Bucks SL7 2DY**



Wellingborough Golf Club Northamptonshire

FIRST ASSISTANT GREENKEEPER

(BIGGA Rates)

Training and experience essential

Possibility of 2/3 Bedroom Cottage – local taxes paid.
Position would suit married person with children.

Apply in writing with CV to:
**The Secretary/Manager, Wellingborough Golf Club,
Great Harrowden, Wellingborough NN9 5AD**



Beauty and The Bearwood

Work has begun on what could turn out to be "one of the most beautiful golf courses to be developed this decade".

The 18-hole, par 72, Bearwood Lakes Golf Club will be constructed upon 200 acres of Bearwood College estate at Sindlesham near Wokingham. Built among some of the most attractive heath and woodland in the South of England, the course features an existing 40-acre lake and is scheduled to open for play in late spring/early summer of 1996, with greenkeepers being recruited from next autumn.

The course will consist of two loops of nine holes which will start and finish close to the clubhouse. Each loop is approximately 3,400 yards long and par 36. The course has been designed by Martin Hawtree and the clubhouse is being created by a local company, Izod Design of Wokingham.

Bearwood Lakes is the brainchild of hotelier and leisure and golf operator David Newling Ward, who lives near Henley. David will be chairman of the company which owns the club.

His fellow director and partner, Ray Wilson, is managing director of Southern Golf which has built golf courses in over 20 countries dur-

ing the past 20 years. The company has also been responsible for constructing many other recent prestigious projects, including The Wisley, The Oxfordshire and The Buckinghamshire.

Demand for membership of Bearwood Lakes is expected to be high, with a population of one million people living within 15 minutes driving time of the site, but initially the club owners are only making 100 founder member debentures available at £4,500 each.

"We are inviting golfers to make an initial and returnable deposit of just £1,500, with the balance payable in two additional instalments between now and the opening of the course in 1996," explained Mr Newling Ward. "There will also be a joining fee and annual membership charge."

The estate gardens and parkland are listed by English Heritage as Grade II, the second highest grading awarded to parks and gardens. Bearwood originally formed part of Windsor Forest, but in 1816 was sold to John Walter MP, then proprietor of The Times newspaper.

The mansion and park were gifted to the Royal Merchant Seaman's Foundation in 1919

and became the Royal Merchant Navy School. Now known as Bearwood College, it is a fee-paying boys boarding school with around 250 pupils.

"Because we have 200 acres of wonderful natural countryside available, every hole will not only provide for good golf but will also be scenically attractive," explained Mr Newling Ward. "In addition to the two main lakes there is also a reservoir."

"There are also wonderful redwood, oak, lime and chestnut trees as well as an overabundance of commercially planted pine which will need to be reduced for the benefit of the other types of tree. And at the right time of the year our display of rhododendrons will match anything to be seen at Wentworth."

English Heritage and local conservationists have already supported the development of a golf course on such an exceptionally natural site, and consultant ecologist Dr Anne-Marie Brennan has produced an environmental survey and management plan to benefit the 90 types of bird and nearly 200 species of plant, tree and fungi which inhabit the Bearwood site.

George Shiels is the consultant agronomist.

SCOTLAND
POWERSHIFT
Dundee
0382 24152

NORTHERN
ENGLAND
GIBSONS GARDEN
MACHINERY LIMITED
Kirkham
0772 682516

FEWSTER AGRIC
SERVICES LIMITED
Seaton Burn
091 236 4155

F R SHARROCK
LIMITED
Wigan
0257 422710

MOUNTAINS MOWERS
Leeds
0532 531201

SEWARD
AGRICULTURAL
MACHINERY
Beverley
0482 869155

MIDLANDS
GROUND CARE
Lincoln
0526 860060

MITCHELL FARM
INDUSTRIES LTD
Nottingham
0785 787987

MOTRAC
Nesscliffe
0743 741528

WHI GRASS CARE
Stratford upon Avon
0789 204073

WOODLANDS
BRIGSTOCK LIMITED
Kettering
0536 373238

EAST ANGLIA
BEN BURGESS
GARDEN EQUIPMENT
LIMITED
Norwich
0603 628251

COWIES EASTERN
TRACTORS LIMITED
Chelmsford
0245 256281

GRASSHOPPER
HORT. LIMITED
Chelmsford
0245 362377

GOLF AND TURF
EQUIPMENT
Codicote
0438 820879

RISBORO TURF
LIMITED
Princes
Risborough
0844 274127

THURLOW NUNN
STANDEN LIMITED
Ely
0353 662871



BY APPOINTMENT TO H.M. THE QUEEN
MANUFACTURERS OF AGRICULTURAL MACHINERY
HAYTERS PLC

HAYTER

THE COURSE LEADER

T44



S W ENGLAND
ROCHFORD
GARDEN
MACHINERY LTD
Wincanton
0963 33713

DEVON GARDEN
MACHINERY
LIMITED
Torquay
0803 872124

G J HANDY
& CO LIMITED
Swindon
0793 721615

RON SMITH
AND CO LIMITED
Worcester
0905 23887

HENNINGS
HORTICULTURAL LTD
Falmouth
0326 250020

LONDON
& SOUTHERN
ENGLAND
GOLF AND TURF
EQUIPMENT
Basingstoke
0734 326484

DRAKE AND
FLETCHER LIMITED
Ashford
0233 6250445

E O CULVERWELL
Lewes
0273 480250

NEW FOREST FARM
MACHINERY LIMITED
Ringwood
0425 472572

NORTH WALES
MAJOR R OWEN
LIMITED
Penrhyndeudraeth
0766 770261

SOUTH WALES
PRO TURF
Carmarthen
0267 233648

TED HOPKINS
Newport
0633 680754

NORTHERN
IRELAND
CYRIL JOHNSTON
AND CO LIMITED
Belfast
0232 813121

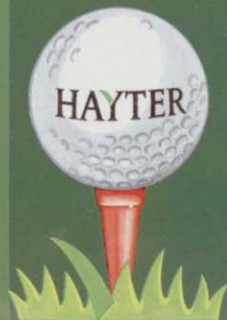
SOUTHERN
IRELAND
DUBLIN GRASS
MACHINERY
Dublin
010 353 1 386995

JOHN O'FLYNN
AND SON LIMITED
Cork
010 353 21314088

CHANNEL
ISLANDS
TONY MAHY
Guernsey
0481 45468

THE PROFESSIONALS' NUMBER ONE CHOICE

Truly way out in front, the T44 is the self-propelled gang mower. The only choice you need to make is 10" fixed or 8" floating heads with 6, 8 or 10 knives. Ample power, advanced controls, weight transfer,



four-wheel drive and differential lock combine to make this machine your perfect playing partner. To proceed further in your quest for perfection, call your dealer today for full details and a demonstration.

Hayters PLC, Spellbrook, Bishop's Stortford, Herts CM23 4BU Telephone: (0279) 600919 Facsimile: (0279) 600338

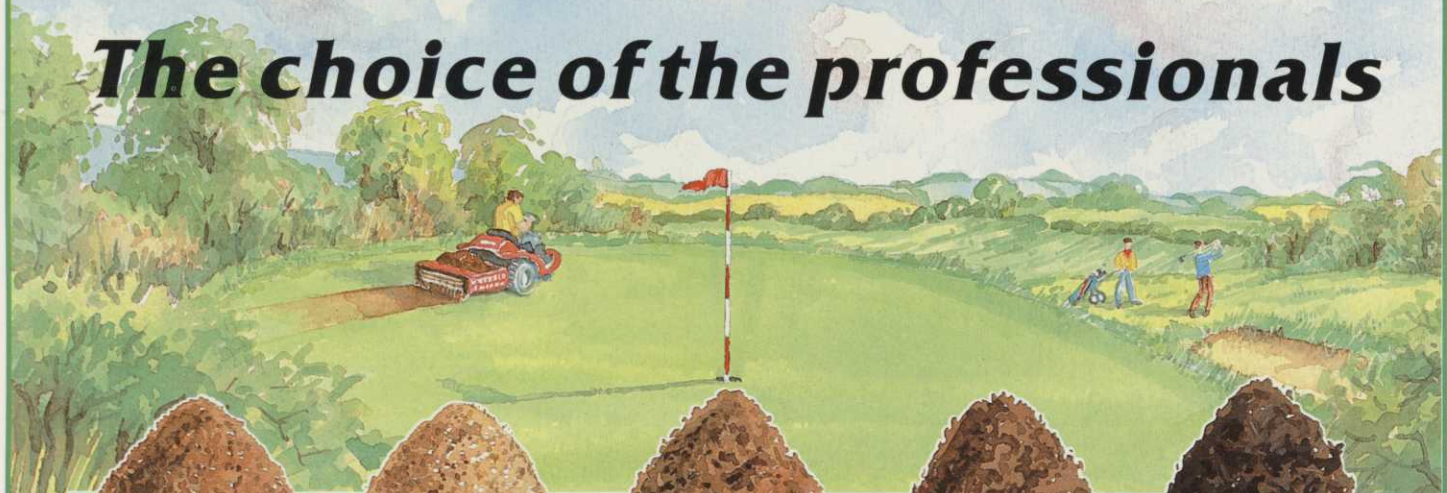
Britain's
No.1
For Service
and Quality

RUFFORD.

NOW THE

COMPLETE RANGE.

The choice of the professionals



TOP-DRESSINGS

Super 1742 - A dressing dominated by the medium sand fraction.

No.1 - Medium/Fine Dressing from our famous Nucks Wood Quarry.

No.2 - Medium/Fine Dressing from our Warrington Quarry.

No.3 - A Coarser Grade Dressing from our Warrington Quarry.

Budget mix - Coarse grade Dressing for cost-effective applications.



SANDS

Free draining lime free sands for Top Dressings, Bunkers, Drainage and Winter Sports Pitches.

Sand suitable for USGA putting green construction.



ROOT ZONE MIX

Can meet USGA Specification, standard and individual mixes available for construction/reconstruction of Golf Greens and Tees. Consistency of materials and unique delivery service guaranteed.



SCREENED SOIL

Screened and shredded, this soil is ideal for all Construction, Divoting and Maintenance work. It is of Quarry origin and has guaranteed consistent quality.



DIVOT MIX

Especially blended for Golf Tees and Fairway Divoting.

Also Available

Peats
Top Dressing Covers
Gravels
Turf

NATURALLY ORGANIC

The success of keeping your Golf Course or Sports Ground in top condition depends on you among other things buying top quality products.

All Rufford Products are produced from our own Quarries with no need to import Sands or Soils. All have been approved by leading agronomists and

Soil Scientists. Consistency of quality and our vast reserves enable you to purchase with total confidence.

You are invited to visit our Quarries to judge for yourselves. Quite a number of course Managers and Agronomists have already done so and we would like to think they were just a little impressed.

All enquiries:-

061 877 8550

Fairway House, South Stage, Broadway,
Salford Quays, Manchester M5 2UQ
FAX: 061 877 8554

Rufford

TOP-DRESS SUPPLIES

Ring us or your nearest distributor
for immediate attention.