



# THE MAGNIFICENT SEVENTH

A RECORD number of exhibitors will be at the 1995 BIGGA Turf Management Exhibition in Harrogate, January 25-27. More than 140 companies and golfing bodies have taken all the available space at the Harrogate International Centre. This is the first time in the seven-year history of the event that it has been a complete sellout.

Every aspect of golf course maintenance is catered for at Europe's premier fine turf show. If you're looking for seeds or strimmers, turf or tractors, mowers or mats, pop-ups or pipes, electric greens machines or expert advice, you'll find it all at BTME. All the major companies and many smaller ones will be there.

The '95 show will open at 9am on January 25 with a ribbon-cutting ceremony in the main entrance performed by BIGGA's chairman, accompanied by other Board of Management colleagues.

As well as the exhibition there is also a series of educational seminars. Subjects covered include 'Budgeting for Golf Course Management' by Colin Hegarty of the Golf Research Group, 'Rabbit and Vermin Control' by Dr IG McKillop of the Central Science Laboratory, 'Plant and Grass Breeding' by Dr David Patterson, a turfgrass breeder, 'Health and Safety' by Douglas Shearer, a health and safety consultant, and 'International Turfgrass Trends' by the world renowned Dr James Beard.

Some of Britain's top course managers will also be talking in the exhibition centre's Royal Hall.



“Every year the BIGGA Turf Management Exhibition gets bigger and better. This year's event looks set to be the best yet – the magnificent seventh. A record number of exhibitors will be at the show with many major companies using it to launch new products. A record attendance is expected from all categories of visitor. They will be seeking knowledge from the technical experts speaking at the educational seminars, coming to see the latest machinery and other products, and coming to spend time and learn from old friends. If you haven't been before, you don't know what you're missing. It's the most useful and informative week in the greenkeeping calendar. See you there!”

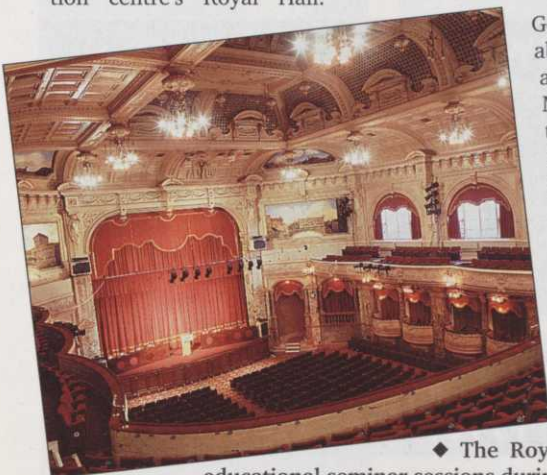
JOHN MILLES  
BIGGA chairman

Popular comedian Tom O'Connor and ex-New Seekers singer Lyn Paul head the all-star cabaret at The Majestic Hotel on Thursday January 26. Entertainment for the National Education Conference dinner on Monday January 23 will be provided by the Rainbow Jazz Band. Greenkeepers will be providing their own entertainment on January 26 as Wednesday night is karaoke night. Is Harrogate ready for this, we wonder?

George Brown will talk about this year's Open at Turnberry, Iain MacLeod of Tain will talk about Golf Course Management in the Highlands, Jim Cassidy will talk about Ashridge – the last five years.

On BIGGA's stand there will be a legal expert offering free advice to anyone having trouble at work.

◆ The Royal Hall – venue for educational seminar sessions during the BTME '95.





## Announcing the winners of Greenkeeper International's BTME competition

They may not have won the National Lottery, but they've won the next best thing – our popular BTME competition, worth £750 in prizes.

And the lucky winners are... **Nigel Buxton**, first assistant,

Cavendish Golf Club; **Andrew Young**, Otley College student and first assistant; and **Stuart Hogg**, deputy course manager at Fontrosse and Rosemarkie Golf Club.

First prize winner, Nigel Bux-

ton, wins return rail travel, three nights' accommodation at a top hotel in Harrogate and entry to all educational seminar sessions.

Second prize winner Andrew Young will receive return rail fare, two nights' accommodation

and entry to all seminars. Third prize winner Stuart Hogg will be given one night's accommodation in Harrogate and entry to all the seminar sessions.

*Congratulations to all our winners – enjoy the show!*

# World class speakers line up for educational event

ENVIRONMENTAL issues, agronomy and irrigation are the main themes for the 1995 BIGGA National Education Conference at The Majestic Hotel, Harrogate, January 23 and 24.

'Green' issues will be covered by David Stubbs, executive director of the European Golf Association Ecology Unit, Neil Sinden of the Council for the Protection of Rural England, Wally Grice of the Forestry Authority, Bob Taylor of the STRI, James Moore of the USGA and Dr James Beard of Texas A&M University.

Agronomy will be covered by several course managers, including Andy Campbell.

Irrigation will be covered by

## the Learning experience

Charlie Barebo of Otterbine Barebo, RA Murray of the Leeds Weather Centre, George Bell of NRA Thames Region, consultant Philip York and head greenkeeper Martin Smith of Ramsdale Park Golf Centre.

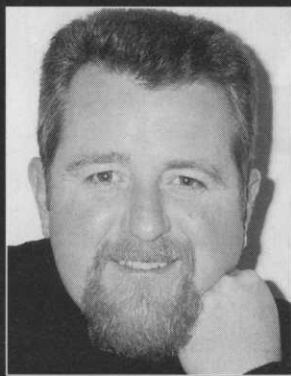
Other greenkeepers giving talks at the National Education Conference include Billy McMillan of the Wildwood Golf Club, Duncan McGilvray of Letchworth Golf Club, Joe Paulin of the London Golf Club and Geoff Allinson of Patsull Park Golf Club.

The National Education Conference is followed by the BIGGA Turf Management Exhibition at the nearby Harrogate International Centre, January 25-27. Running alongside the show is a series of education seminars with a similarly high calibre of speakers.

The quality of this line-up of speakers means Harrogate will be hosting the most informative and comprehensive fine turf education programme outside San Francisco in 1995.

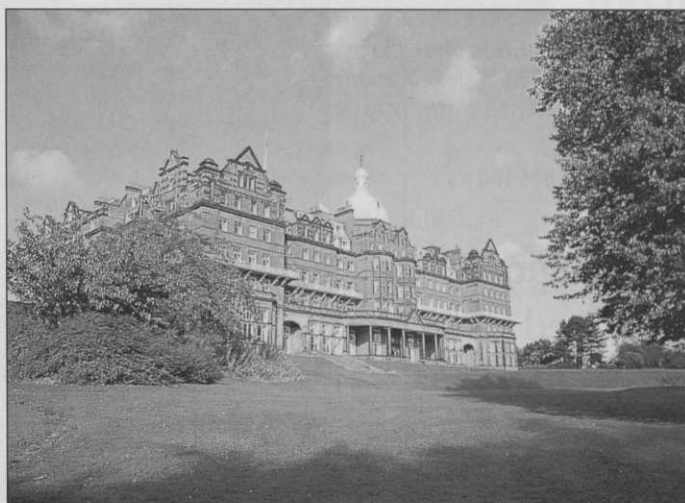
"It's a week few greenkeepers, club secretaries and chairmen of green can afford to miss," says BIGGA's education officer Ken Richardson.

### AMONG THE SPEAKERS...



Jim Cassidy, pictured, is course manager at Ashridge Golf Club and his talk in the Royal Hall on Wednesday January 25 will be about his course – the geology and wildlife, the management structure, improvements brought about by investment in modern machinery, the irrigation system and future plans.

◆ The Institute of Agricultural Engineers' amenity and ecological engineering group will hold a special seminar in the George Hotel from 2-5pm on Thursday January 26. The subject will be Engineering Progress in Sports Turf Maintenance. Speakers will include Marvin Jaques of Ransomes, Bill Oliver of Hardi and David Jenkins of Charterhouse. Entrance is free.



The Majestic Hotel will be the base for the '95 National Education Conference. If you are going to the conference, you'll find it much more convenient if you are booked into this 156-bedroom hotel. You will also find it more relaxing as it has a heated indoor swimming pool, Jacuzzi, sauna, gymnasium, squash court, tennis court, golf driving net and snooker/pool room.



### BTME opening times

Wednesday January 25:  
9am-5.30pm  
Thursday January 26:  
9am-5.30pm  
Friday January 27:  
9am-1.30pm

◆ BIGGA's president, Viscount Whitelaw, who missed last year's show because he had some important speeches to make in the House of Lords, intends to be there this year to see how much BTME has grown since his last visit.

### LATE BOOKINGS

Accommodation is still available but it's being booked fast. Call Sami Collins at BIGGA HQ today to reserve your hotel room. Telephone 0347 838581.

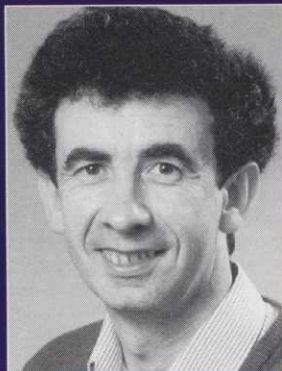
◆ The third European Forum will take place in the Royal Hall on Thursday January 26 from 1.30-3pm. Speakers include Tommy Lindelof, chief executive of the Swedish Greenkeepers Association; Peter Shaw, international member and course manager at Munchen-Riedhof in Germany; Dennis Mortram of Reaseheath College and Joe Baidy, president of the GCSAA.

◆ The BIGGA Annual General Meeting will take place at The Majestic Hotel at 5.45pm on Wednesday January 25. All members are urged to attend – but please produce your membership cards to get in.

◆ The British Association of Golf Course Constructors will be holding a reception in the Swan Hotel from 6-7.30pm on Wednesday January 25. Admission is by invitation only.



AMONG THE SPEAKERS...



The welfare of wildlife is a growing public concern and therefore there is increasing pressure on greenkeepers to manage the problem species on their course in a humane manner. In most cases there is also legislation in place which prescribes the way in which animals can be managed, particularly, for example, badgers. Dr Gordon McKillop of the Central Science Laboratory will give details of management techniques – so greenkeepers can adopt a balanced, ecological approach to this sensitive subject – in a seminar at the BTME on Thursday January 26.

# With one swipe, the queues are cut and you're in

THERE should be no long queues to get in this time. BIGGA has invested in a new pre-registration system and is employing the latest technology to ensure that visitors can walk more or less straight into the show.

For the first time, people who pre-register will get their badges mailed to them prior to the event. These badges contain a barcode. When the pre-registered visitor turns up at the Harrogate International Centre, this barcode will be 'swiped' by a light pen as you enter the hall.

A light pen will also be given free to most of the exhibitors so they can make a note of who they've been talking to (name, job title, course, address) by simply scanning your badge. Your details will then be recorded automatically for the exhibitor, so you won't have to hand out busi-

ness cards left, right and centre or hang around while someone writes down all your details in a book.

Coventry Data Services, specialists in this field since the '60s, have been commissioned by BIGGA to operate this convenient system.

Of course the key to getting in faster is to pre-register by completing the black and white folded BTME card inserted in this magazine. Pre-registrations from recent issues are already flooding in to BIGGA HQ.

**FINDING YOUR WAY TO HARROGATE IS EASY**  
 BY RAIL: The comprehensive rail network means you can get to Harrogate very easily; for example 25 trains run daily from London King's Cross to Harrogate and there are some 15 trains from Edinburgh, 16 from Glasgow and 30 from Manchester

**BIGGA TURF MANAGEMENT EXHIBITION**  
  
**BTME**  
 1995  
 & EDUCATIONAL SEMINAR PROGRAMME

BY AIR: Leeds/Bradford Airport is 12 miles away and has direct flights from major European cities. BY ROAD: From North and South – A1, exit Wetherby, nine miles from Harrogate. M1 and M62 to Leeds, which is 15 miles away. BY SEA: North Sea Ferries, from Rotterdam/ Zeebrugge to Hull, 60 miles away.

◆ The three qualities every greenkeeper should possess are perseverance, pride and professionalism. At the National Education Conference Geoff Allinson, the 27-year-old course manager at Patshull Park, will explain how he used these qualities to overcome problems at this 18-hole parkland course. Problems such as breaking down age barriers between him and his staff, improving greens with insufficient machinery, and overcoming problems caused by moles and buggies.

VITAX LTD.,  
 OWEN STREET,  
 COALVILLE,  
 LEICESTER LE67 3DE  
 TEL: 0530 510060  
 FAX: 0530 510299

# VITAX



By Appointment to Her Majesty the Queen  
 Manufacturers of Fertilisers and Insecticides  
 Vitax Limited

## VITAX ULTRAFLO

## THE ULTIMATE WETTING AGENT

See us on Stand A34A at BTME

Formulated for today's climatic conditions. Water is one of our planet's most precious resources using it more resourcefully, makes both economical and environmental sense.

- Once a year treatment.
- Rapid and deep penetration through thatch and dry patch affected turf.
- Easy to mix in cold water and use in cold climatic conditions.
- Major savings on future watering and irrigation requirements.
- Maximises the benefits of subsequent fertiliser and chemical applications.
- Successfully trialled by a number of leading U.K. Golf Courses.

Available in 10 litre containers.



AD REF 139



# WHO TO LOOK OUT FOR AT BTME '95

A selection of some of the exhibitors – full catalogue next month

## Massey Ferguson Grass Equipment

Massey Ferguson Grass Equipment supplies a wide range of compact tractors and turfcare machinery for the professional grounds care market. In addition to its own branded products, the company is the exclusive distributor for Iseki turfcare equipment and Bucher grounds maintenance machines in the UK and Ireland. All three ranges are sold through a nationwide network of dealers.

On show at BTME will be models from the 17 to 35hp MF 1200 compact tractor line-up and the 25 to 45hp Iseki TA compact tractor range. Also on show will be the Iseki SF 300 diesel front cut mower and Iseki SG diesel riders.

## Supaturf Products

Two brand new water management products for fine turf are to be launched at BTME '95 and Supaturf are preparing for a grand presentation at Harrogate. To promote the launch of these new greenkeeper products, Supaturf are running a competition with the chance to win a free trip to the GCSAA show in San Francisco with the BIGGA party. If you haven't already entered, please see the advertisement in this edition of Greenkeeper International for details.

To add to their existing range of line markers and marking liquids for both grass and hard surfaces, Supaturf have introduced a new range of line marking aerosols, called Supa Mark, ideal for use around the golf course.

## BLEC

BLEC will be exhibiting some new prod-

ucts on their show stand to complement their range of construction and maintenance equipment. New machinery for 1995 includes a pedestrian overseeder, a range of attachments for Honda 2 Wheel tractors, including turf cutters, aerators, brushes, flail mowers, rotary mowers, renovators, also a new hydroseeder model has been developed for transporting on light trucks and trailers, ideal for golf course construction and renovation works.

The experienced BLEC staff will be on hand to welcome all visitors, both existing and new, on their stand.

## Multi-Core

Multi-Core's TM1000 and TM1500 will be featured at BTME '95. Each machine combines robust construction with ease of maintenance, claim the manufacturers, resulting in downtime being kept to a minimum. A choice of tine spacings and sizes are available, from mini hollow and solids to 19mm hollow, giving up to five inch depth. All the current heads will be on display.

Also featured will be the popular greenkeeper pedestrian 21 inch aerator, offering reliability at an affordable price. So if you're looking for an aerator in 1995, don't forget to call in at the Multi-Core stand.

## D&E Turf

Exhibiting for the fourth time at the BTME, D&E Turf are becoming well known throughout many sections of the Association for their innovative ideas and forward thinking. Many BIGGA

members have used their modern equipment for their renovation work.

In 1995 D&E launch their machinery education facility at their Bishop Auckland depot. Full details of the practical training courses will be available at BTME.

Dave Stephenson and his staff will be on the stand and look forward to answering any queries and providing competitive quotations for the many services available to the turfcare professional.

## Martin Brothers

Martin Brothers (UK) Ltd have over three decades experience of servicing the amenity marketplace with quality sands and aggregates.


They believe they are now at the forefront in the supply of finest quality top dressings and rootzones, produced at quarries in Cheshire and Lincolnshire and available for delivery throughout the UK within 72 hours.

The company pledge is for quality products, competitive prices and superior service.

Martin Brothers claim that like their products, their service is second to none, backed up by helpful trained staff both in the office and in the field.

## Vitax

Vitax will be displaying three new additions to their sport amenity and key product range. 50-50 Liquid Mosskiller is a fine turf and hard surface mosskiller and biocide. Pack sizes 5 litre – 10 litre. Vitax Stay Wet is the ultimate water



**AMONG THE SPEAKERS...**

◆ Billy's about! Billy McMillan, course manager at Wildwood Golf Club, Cranleigh, Surrey, is considering using a video for his presentation at the National Education Conference. Billy, 36, has been asked to "Put it all in perspective" by talking about greenkeeping, irrigation, agronomy and ecology – the main themes of the conference. But since he's a man of very few words (his words!), he's been asking BIGGA headquarters about what type of tape he needs to bring.

absorbing granule, say the makers, for targeting water precisely at plant root level. Fine X is a new improved seaweed formulation of this long established fine turf spring and summer powder fertiliser. Pack size 25kg. These new products will be featured alongside the full Vitax sport amenity and key range products.

## Pattisson

H Pattisson & Co Ltd have a long stand-

**J D GREASLEY LIMITED**  
"Windridge" Station Road · Rearsby · Leicester LE7 4YY

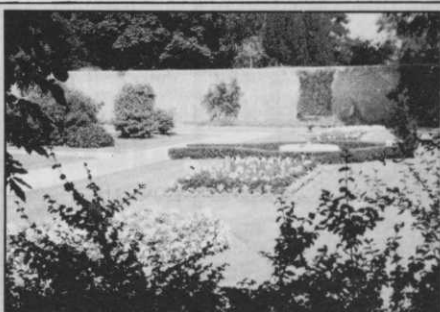
*John Greasley* · SPECIALISTS IN · GOLF COURSE CONSTRUCTION ·

Telephone 0664 424770  
Mobile 0836 553899  
Fax 0664 424126

See us on Stand C27 at BTME

BRITISH ASSOCIATION OF GOLF COURSE CONSTRUCTORS  
**BAGCC**

AD REF 461



## BRITISH OVERHEAD IRRIGATION LIMITED

UPPER HALLIFORD GREEN, SHEPPERTON, MIDDLESEX, TW17 8SB.  
TELEPHONE: 0932-788301 FACSIMILE: 0932-780437.

See us on Stand C18 at BTME

**WORKING WONDERS WITH WATER - SINCE 1923**



AD REF 229

# WHO TO LOOK OUT FOR AT BTME '95

A selection of some of the exhibitors – full catalogue next month

ing reputation in supplying golf course equipment. In 1987 as demand grew for range equipment Patisson launched new innovative products to supply the driving range market. 1994 saw the new Patisson's emerge, with the launch of their new brochure and products. And now comes the new driving range brochure, offering customers a "one stop shop" for all their requirements, according to managing director, Mike Hinch.

Patissons are main distributors for Tildenet and recently signed an agreement with Range King ball dispensers. They also market a ball dispenser manufactured in the UK.

At Harrogate, Patissons will be launching a new product, which they describe as an "innovative secret". All will be revealed during BTME...

## Mommersteeg

Mommersteeg lay claim to being the leading supplier of grass seed mixtures to the golf industry. Through their group of distributors covering the county they can supply top quality mixtures for greens, tees, fairways and roughs.

Whether you are planning course extensions or alterations, or you want to talk about a routine maintenance programme, visit the Mommersteeg stand at BTME for help and advice.

All mixtures are treated with Headstart – a biological growth enhancer, which Mommersteeg reckons increases the vigour of the young sward and ensures the establishment of a new playing surface as soon as possible.

## Scotts

During 1994, the Scotts Company, USA, acquired Grace Sierra and its subsidiary officers including Grace Sierra UK.

At BTME '95, the new company, Scotts UK Ltd, will be introducing two new ranges of fertilisers, utilising technology unique to Scotts, which they claim to be the market leader in the United States. This will build on the already successful range of coated products, such as Sierrablen Turfmix and Osmocote N, currently available.

The new products will be of particular interest to greenkeepers maintaining sand based greens, low cut tees, fairways, approaches and surrounds including creeping bent and those interested in cost effective fairway fertilisation.

## Euromec

Euromec will be displaying their new range of front deck mowers and collection machines at BTME '95. The company claims their equipment is ideal for local council use, parks, playing fields and residential areas, offering excellent productivity at competitive prices.

Mowers have been designed to collect grass cuttings. The top of the range Turbograss has a zero steering radius, to cut grass in difficult places. High speed blades cut cleanly and a powerful vacuum systems collects cuttings efficiently.

For effective vacuum collection, Euromec will have on display two innovative machines – the TurboVac and the MuckLoada.

Also on the stand will be a range of ride-on and walk behind sweeping machines.

## HLD Ltd

Exhibiting for the first time, HLD will be featuring all aspects of their timber landscape and engineering product range. HLD offer what they claim is an unrivalled service for the design, manufacture and installation of timber bridges, boardwalks and access structures, with projects completed on several prestigious golf courses throughout the UK.

HLD manufacture to individual client specifications and all tanalised redwood structures carry a unique 25 year preservation guarantee.

## JD Greasley Ltd

John Greasley established his business ten years ago to specialise in golf course construction. The company prides itself on high standards of work at a reasonable price.

During the last year, the company has constructed a new 18 hole course at Ridding Park, near Harrogate and has recently completed alterations including reconstruction of the greens at Open Championship course Royal Birkdale and a programme of bunker reconstruction at Wollaton Park GC, in Nottingham.

## Inturf

Inturf grow a comprehensive range of turf for golf courses including high agrostis, fescue/agrostis and high fescue species in a variety of cultivar com-



## AMONG THE SPEAKERS...

◆ At least four people will have water on the brain on the morning of Tuesday January 24. Charlie Barebo of Otterbine Barebo will start the drip of information by talking about ponds and lakes. RA Murray of the Leeds Weather Centre will continue the outpouring by talking about Meteorological Effects. Geoff Bell, water quality manager of NRA Thames Region, will explain how to use water wisely and leading irrigation consultant Phillip York will shower you with information about how irrigation operating costs can be reduced with proper system design, installation and good management. These four talks are just part of the education programme lined up for the National Education Conference at Harrogate during BTME Week, January 23-27.

# BUNKER PUMPER

## MOVES 280 GPM – FAST!

Clear flooded bunkers, gulleys, open-drains, ditches or other low lying areas of casual water fast. Watch Bunker Pumper do it for you.

Portable, powerful, self-priming, Bunker Pumper moves unwanted water at the rate of 280 GPM. Brings flooded areas back into play faster than you'd think!

Yes. Forget the problem of unwanted water hazards – let an Otterbine Bunker Pumper clear the way for you...

*Before saying 'yes', ask for a demonstration.  
Phone, fax or write today, say 'Bunker Pumper'.*

**HYDROSCAPE GROUP LTD**  
Official Otterbine Distributor for British Isles  
10 Carvers Industrial Estate  
Ringwood • Hampshire • BH24 1JS  
TEL: 01425 476261 FAX: 01425 472380



AD  
REF  
475



# WHO TO LOOK OUT FOR AT BTME '95

A selection of some of the exhibitors – full catalogue next month

binations popular with modern green-keeping requirements. Supplies are available anywhere, any time, say the company, in conventional rolls, big rolls or, by special arrangement, turf tiles.

Inturf say they have made tremendous advances in the industry, having developed the original and patented Big Roll turfing system and more recently their "Lay 'n' Play Turf Tiles".

## Tildenet

Tildenet Ltd, the international netting company, claim to be market leaders in perimeter ballstop netting. They now supply fencing kits for self installation as well as offering a full installation service, including advice or obtaining planning permission.

At BTME, Tildenet will be exhibiting their increased range of golf practice nets, to cater from the busiest of professionals and golf clubs, to the keen beginner's back garden.

Target nets, anti-ball plugging nets and germination sheets can also be found on the Tildenet stand.

## Sports Ground Irrigation

Sports Ground Irrigation will be showing the latest new products from Hunter Industries, including the new HPV electric valves and the PSC Controller for the bowling greens and residential markets. Hunter's new G750 large turf and valve-in-head sprinkler will also be featured, as well as a special section for the student greenkeeper with a range of technical literature specifically aimed at this important group.

Sports Ground Irrigation will also be offering for the first time the Phairway system of PH control, utilising the "Greenturf" system. Full technical details will be available, together with a working unit.

## Lely/Toro

Toro is showing three new turf maintenance products at the BTME.

The Reelmaster 5300-D is a completely reworked model of the Toro 5100-D lightweight fairway mower with added power for cutting in tougher conditions. The new machine has the same technical specification but is fitted with a bigger engine and appropriately updated other components. Other technical changes have resulted in excellent climbing performance.

The Greensmaster 3100-3WD is a new three wheel drive model of Toro's lightweight greens mower.

The Toro HC4000 is a new high-capacity aerator for use with smaller tractors of 25hp to 45hp. It fills the gap between larger fairway and smaller greens aerator.

## Sovereign Turf

Sovereign Turf Ltd have been producing high quality turf for professional landscapers, local authorities and sports clubs since 1987. Top rated STRI cultivars, light sandy soil together with what they describe as innovative management techniques ensure that Sovereign Turf is of consistently high quality and available all year round.

Steve Williams and David Waring will

be pleased to welcome you to the Sovereign Turf stand where samples of the recently launched New Century Greens turf will be displayed. Also on show will be fine tees and hard wearing sportsturf grades.

## Bourne Amenity

Bourne Amenity, marketing Tilcon products in the south of the country, are exhibiting with Tilcon at BTME '95. Bourne Amenity and Tilcon are jointly representing their complete range of amenity products available nationwide.

What they claim to be market leading products, such as Dunlop Sports Sand, Harden Redtrack pathway material and mixed top dressings and rootzones, will also be on show.

After a busy 1994 Bourne Amenity's contracting division will also be represented. Numerous projects that have been completed for prestigious clients include the London Golf Club.

## Eric Hunter

Eric Hunter Grinders will be exhibiting their range of fine mower grinding machinery. The Jupiter and Juno machines are proving tremendously popular with golf clubs who are anxious to save on high outside maintenance costs and also improve cutting standards, says the company. Already used by many leading golf clubs such as Gleneagles, St Andrews and Turnberry, these machines lead the field in accurate "relief" angle grinding. This method of grinding is becoming immensely popular, they claim, due to the superior cut-

ting edge it produces which in turn has many other major benefits.

## Barenbrug

Barenbrug will use BTME as a platform to advise visitors of their latest successes in the 1995 STRI Turfgrass Seed Report.

In the golf green sector, Barcrown remains at the top of the Slender Creeping Red Fescue table, where it has been joined at number eight position by newcomer Barlander. In the Chewings Fescue table, Barenbrug has three varieties in the top ten.

Heriot and Bardot perform well in the Agrostis category and dwarf perennial ryegrass Barclay and stable mate Barcredo are among the top six ryegrasses.

All the varieties will be on display in Harrogate and managing director Michel Mulder and his team will be on hand to explain the reasons why Barenbrug consistently scores so well.

## British Overhead Irrigation Ltd

BOIL are staging a comprehensive display of tried and tested golf course irrigation systems at BTME. Among the equipment will be conventional and valve-in-head pop-up sprinklers, high efficiency solenoid valves, electronic control systems, associated hardware and Hunter's new PSC controller for small scale projects.

BOIL have 72 years of specialist irrigation design and contracting experience and staff are looking forward to informed discussions with turfcare professionals.

## Powered Up To Go The Distance The Hunter G-700

The Hunter G-700 is a proven and reliable gear-drive for all golf course sites. New pressure port nozzling ensures efficient water distribution across the entire 23,2 to 30,5 radius range. And the G-700 features the industry's first pure flow valve filtration system for dependable performance in harsh water conditions.

### The G-700

- Check-O-Matic, Hydraulic and Electric V.I.H.
- 80 mm pop-up prevents wet spots around the head
- Logo cap with recess for yardage markers
- Five-year exchange warranty



The G-700  
Electric  
Valve-In-Head  
with Pressure  
Regulation

### Authorized Hunter Golf Distributor

#### Sports Ground Irrigation Co.

6, Stuart Road  
Market Harborough  
Leicestershire LE16 9PQ  
Tel: 01858 463153  
Fax: 01858 410085

Now Available in Scotland

#### Sports Turf Services

Newbridge, Midlothian EH28 8LE  
Tel: 031 333 2345  
Fax: 031 333 5311

See us  
on Stand  
A8 at  
BTME

# Hunter®

Europe: 26ter rue Sallier, 13100 Aix-en-Provence, France - Tel: 33-42-93-03-68 - Fax: 33-42-93-03-84

Member  
  
The Irrigation Association