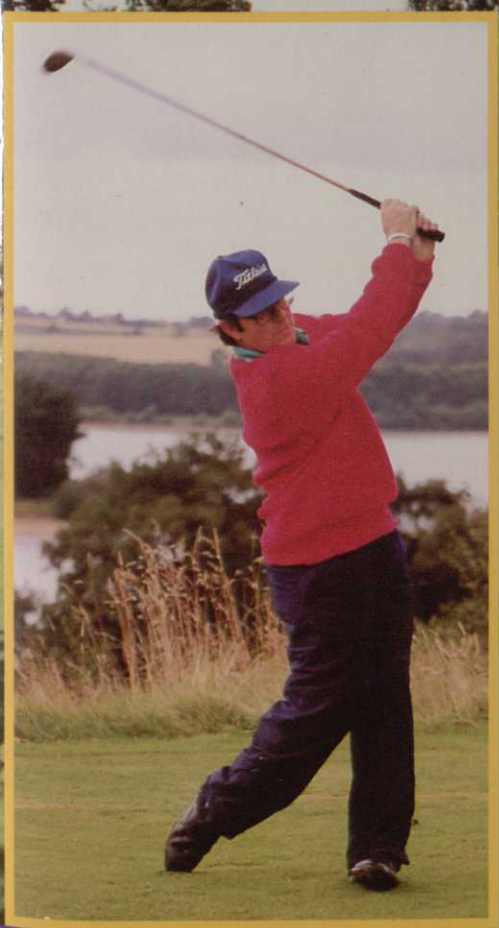


# GREENKEEPER

*International*



## MIKE'S MAGIC

Hughes wins Hayter Challenge





# “We believe that the Ransomes Classic is the best Greens Triple available today”

says Bill Howie  
General Manager, Prince's Golf Club.



No other Greens Triple can match the mowing precision of the Ransomes Classic. Superb greens units with “no tool” micro adjustments and verti-groom option ensure a fast, consistent putting surface.

Designed to meet the needs of today's golf courses; it features simple to use hydraulic controls, fast interchangeability of units and diesel engine for economy and performance.



BY APPOINTMENT  
TO HER MAJESTY THE QUEEN  
MANUFACTURERS OF  
HORTICULTURAL MACHINERY  
RANSOMES SIMS & JEFFERIES LTD  
IPSWICH

**RANSOMES**

Ransomes Sims & Jefferies Ltd, Ransomes Way, Ipswich IP3 9QG, England. Tel: (0473) 270000 Fax: (0473) 276300





Official publication of the  
British & International Golf Greenkeepers Association  
**OCTOBER 1993**

# GREENKEEPER

International

## CONTENTS

### Getting to Kingsknowe you

Nestling on the outskirts of Edinburgh and managed by staunch BIGGA supporter Willie Blair, lies city course Kingsknowe. David White examines this 'wee gem' - when he eventually manages to find it...

.....Pages 17-19



### Double figures for Education fund

More good news for greenkeeping as a career as the BIGGA Education and Development Fund presents a plaque to its tenth member .....Page 7

### Managing water effectively

David Hemstock looks at the science, rather than the art, of using water for effective golf course drainage .....Pages 8-9

### Hayter Challenge Tournament

Heavy rain failed to dampen enthusiasm for the eagerly anticipated final of the prestigious Hayter Challenge Tournament .....Pages 10-12

### Students line up for glittering prize

It's time once again for the Toro/PGA European Tour Student Greenkeeper of the Year Award and eight hopefuls prepare for battle .....Pages 14-15

**WIN  
£50  
CASH IN  
OUR FUN  
COMPETITION  
- TURN TO  
BUYERS  
GUIDE  
P38**

## DEPARTMENTS

### Faces and places

Up to the minute news and views of all that's happening in our industry - and a challenge for turf cutter historians.....Page 5

### Letters

Favourable feedback from BIGGA's new video; more on mowrah; how things were in the 1930s; and more in a bumper mailbag .....Page 37

### Around the Green

Regular updates from our country-wide correspondents. Find out more: .....Pages 29-31, 35, 46

### COVER PICTURE:

Mike Hughes demonstrates the swing that 'won him top spot in the Hayter Challenge Tournament

### Greenkeeper Education and Development Fund

Launched by Viscount Whitelaw at BTME 1992, the Fund provides the key to the future for greenkeeper, golf club and game. Individuals and companies can join the Golden Key Circle and Silver Key Circle. For details, contact BIGGA on 0347 838581.

**GOLDEN KEY CIRCLE COMPANY MEMBERS:**  
Farmura • Hardi Ltd • Hayters PLC • ICI Professional Products • Jacobsens • Kubota UK Ltd • Lely UK Ltd • Milliken • Ransomes • Rigby Taylor Ltd • Risboro' Turf • Toro Irrigation



**BIGGA  
GOLDEN KEY  
and SILVER KEY  
CIRCLES**

## ALL THE DETAILS YOU NEED

Our FREE READER REPLY SERVICE keeps YOU in the picture



Use the post-paid Reader Reply Card facing Page 46 for further information on the products and services advertised in this issue. Just state the companies' Ad Ref numbers and leave it to us.

## ADVERTISERS' INDEX

a quick reference guide

	Ad Ref	Page
All Seasons Dressing	375	46
Allen Power	126	26
Atterton & Ellis	7	22
Bob Andrews	381	27, 33
CLC	424	9
Compact Machinery	14	4
Enterprise Buildings Ltd	425	18
Eric Hunter	73	24
Golf Mats UK	426	32
Hayter PLC	90	25
John Deere	103	13
Lamberhurst Equipment	427	4
Land Recovery	417	33
Lely (UK) Toro	61	20
Lockwood Grass Machinery	418	21
MJT	382	32
Monomet	428	9
Multicore	347	32
Pattisson	35	35
Ransomes	9	2
Rhône Poulenc	59	36
Rigby Taylor	127	16
Risboro' Turf	386	32
Rufford	5	48
SCATS	429	4
SISIS	176	47
Standard Golf	421	29
Supaturf	164	34
Supreme Mowing	57	28
Tillers Turf	292	17
Verde Sports	291	4
Wessex Farm Machinery	210	34
Colleges	•	7
Buyers Guide	•	38-42
Classified	•	43
Recruitment	•	43-45



**President**  
The Rt. Hon.  
Viscount Whitelaw  
K.T., C.H., M.C.,  
D.L.

### BIGGA BOARD OF MANAGEMENT

Chairman: John Crawford  
Vice-Chairman: John Millen

### BOARD MEMBERS

Ivor Scoones George Malcolm  
Gordon Moir Barry Heaney  
Huw Parry Dean Cleaver  
Roy Kates George Barr

### EXECUTIVE DIRECTOR

Neil Thomas B.A.

### EDUCATION OFFICER

Debbie Savage



### EDITOR

David White  
Tel: 0323 891291 • Fax: 0323 895593

### DESIGN/PRODUCTION EDITOR

Tim Moat  
Tel: 0904 610611 • Fax: 0904 643074

### SALES AND MARKETING MANAGER

Bill Lynch  
Tel/Fax: 091 413 7218

### SALES AND MARKETING ASSISTANT

Louise Lunn  
Tel: 0347 838581 • Fax: 0347 838864

### ADVERTISING SALES EXECUTIVE

Carol Dutton  
Tel/Fax: 0207 570117

### PRINTING

Hi-Tec Print, Unit 7, Universal Crescent,  
Houghton Road, North Anston Trading  
Estate, Dinnington, South Yorkshire S31 7JJ  
Tel: 0909 568533 • Fax: 0909 568206

Greenkeeper International is the official magazine of the British and International Golf Greenkeepers Association and is published monthly at BIGGA Headquarters, Aldwark Manor, Aldwark, Alne, York YO6 2NF. Tel: 0347 838581 • Fax: 0347 838864.

Please address all advertising, subscriptions and address changes to BIGGA.

Contents may not be reprinted or otherwise reproduced without written permission. Return postage must accompany all materials submitted if return is requested. No responsibility can be assumed for unsolicited materials. The right is reserved to edit submissions before publication.

Circulation is by subscription. Subscription rate: UK £34 per year, Europe and Eire £44. The magazine is also distributed to BIGGA members, golf clubs, local authorities, the turf industry, libraries and central government.

### Editorial Offices

All magazine contributions should be sent to: The Editor, Greenkeeper International, 13 Firlie Close, Seaford, East Sussex, BN25 2HL. Tel: 0323 891291. Fax: 0323 895593. Although every care will be taken, no responsibility is accepted for loss of manuscripts, photographs or artwork. Opinions expressed are not necessarily those of the Association and no responsibility is accepted by the Association for such content, advertising or product information that may appear.

ISSN 0961-6977

© 1993 British & International  
Golf Greenkeepers Association



Take a closer look at what Greenkeeper

International can do to promote YOUR business

Here's what one of our advertisers has to say about the industry's most effective magazine:

"Greenkeeper International just keeps on getting better and as a regular advertiser we're enjoying the benefits of more and more enquiries."

- PETER JEFFORD,  
Managing Director, Rufford Top  
Dress Supplies Ltd.

### FOR MORE DETAILS CALL:

Bill Lynch on 091 413 7218,  
Carol Dutton on 0207 570117  
or Louise Lunn at BIGGA HQ  
on 0347 838581.



# Sports surface technology

- VERDE TEE FRAME  
Raised steel platform with fully adjustable legs. Top quality driving surface.
- VERDE WINTER TEE  
Spacious artificial tees. Self install kits for the practical groundsman looking for good value.
- VERDE DRIVING MATS  
Driving range and practice mats. Proven life of over two years on busy ranges. Best quality - Best prices.
- ARTIFICIAL PUTTING SURFACES
- ALL DRIVING RANGE REQUIREMENTS
- DRIVING BAYS FOR CLUB AND HOME. Comprehensive selection of frames and net enclosures.

Artificial, sports surfaces and equipment for a range of sport and leisure activities.

**V**  
**VERDE**  
**SPORTS**  
**LIMITED**

UNIT 25,  
COWLING MILL,  
COWLING BROW,  
CHORLEY,  
LANCASHIRE.  
PR6 0QG

TEL: 0257 269069  
0257 269983  
FAX: 0257 261064

PLEASE CALL  
FOR FREE  
SAMPLES  
AND  
INFORMATION

AD  
REF  
291

# SCATS

Number One,  
Top Iseki Dealer in the UK

## ISEKI



For your ISEKI requirements in the South of England, please contact our Sales Offices on any of the following numbers:

<b>ALTON</b>	<b>0420 83511</b>
<b>BILLINGSHURST</b>	<b>0403 782031</b>
<b>MARDEN</b>	<b>0622 831685</b>
<b>NEWPORT IoW</b>	<b>0983 524351</b>

AD  
REF  
429

# LAMBERHURST

## ★ IMPORTANT NOTICE ★

THE FOLLOWING ITEMS WILL BE SOLD  
TO THE HIGHEST WRITTEN OFFER  
RECEIVED BY 26 OCTOBER 1993

- 1 EX-DEMO HUXLEY HUXTRUK C/W SHORT DUMPBOX. *Only 76 hrs. Excellent condition*
- 1 EX-DEMO HUXLEY 358 GREENSMOWER, SLOTTED FRONT ROLLERS, TURF COMBS, 3 WHEEL DRIVE. *300 hrs. perkins engine. Very good condition.*
- 1 EX-DEMO HUXLEY HEAVY DUTY 138 5-GANG TRAILED UNIT. TWIN ROLL. *Only 3 demo's. Excellent condition.*
- 1 EX-DEMO HUXLEY HU38 AERATOR. HOLLOW + SOLID TINES + WEIGHTS. *Very good condition.*
- 1 EX-DEMO SAXON MTM7 TRIPLE RIDE-ON. *Excellent condition.*
- 1 NEW HUXLEY TR138 TWIN ROLL 5-UNIT GANG MOWER C/W CASTER WHEEL ATTACHMENT + FLOATING TOP LINK.
- 1 NEW HUXLEY HEAVY DUTY 84 3-GANG UNIT.
- 1 EX-DEMO HUXLEY TR84M TRIPLE FOR MF OR HINOMOTO. *Good condition.*
- 1 NEW AGAR MID MOUNTED ROTARY FOR MF OR HINOMOTO.

FOR FURTHER INFORMATION  
AND INSPECTION, PLEASE CONTACT

Tel: 0892 890364 Fax: 0892 890122

Priory Farm, Lamberhurst, Tunbridge Wells, Kent TN3 8DS

AD  
REF  
427

# GRASSHOPPERABILITY!

*grass'hop'per abil'i ty n.*  
the ability to make all the right  
moves for mowing quality and time-  
saving trimability.

Choose from the most complete line of  
outfront, zero-radius mowers in the industry,  
ranging from 11 to 25 hp, and from 35" to 72"  
cutting widths. Plus a full range of  
year-round attachments  
including the Quik-D-Tatch  
Vac® Grasscatching  
System. Advanced dual-  
hydrostatic direct drives  
assure smooth  
response, require  
less maintenance  
and extend  
service life.



Zero-radius  
maneuverability

Outfront  
reachability and  
"no shift"  
forward/reverse

Square corner  
turnability

Uncanny trimability

Ask for a  
demonstration.

For information or a demonstration please contact

**COMPACT**  
MACHINERY LIMITED

No 1 Yard, Barlby Road, Selby, North Yorkshire YO8 7AB  
Tel: 0757 210007 Fax: 0757 210020

AD  
REF  
14



# Faces and places

■ The STRI will hold four five-day courses at Bingley in the autumn of '93 and spring of '94, on the theory and practice of turf construction and management. The courses (Monday-Friday) will cover soils, grasses, turf diseases and pests, drainage, watering, fertilisers, machinery, ecology and conservation management.

The 'Golf Only' courses begin on 1 November and 8 November '93, and in '94 on 21 February and 28 February. The cost for '93 is £185 (members) and £230 (non-members) and for '94 will be £195 (members) and £240 (non-members). Prices do not include VAT, accommodation or meals. Details: Mrs M Curran, STRI, Bingley, West Yorkshire, BD16 1AU. Tel: 0274 565131.



■ Allan Stow, left, technical sales advisor at Vitax, was seen sporting a larger than usual grin on his monicker at IoG. When quizzed by editor White he spoke of upcoming wedding bells, or whatever the equivalent tune is played at the 'registry'. So to Nina, the lucky gal, and to 'Stowie', the lucky lad, every happiness and good fortune!



■ What is believed to be Fife's first commercial pay and play golf course, perhaps even the first in all of Scotland, Charlton House is due to open to the public next year. Head greenkeeper David MacOwet is busy putting finishing touches to the parkland course, which overlooks the Forth, hard by a cluster of such famous member clubs as Elie, Leven and Lundin Links.

■ Parker Hart has announced the closure of its Warrington depot, declaring the operation insufficiently profitable. The company will now concentrate its resources in the south, where the appointment of Richard Gooding as sales director of their sister company, Roffey Bros., is seen as strengthening further their selling operation in the south-west.

■ Golf course architect, Martin Gillett, has developed a most distinctive style in his many years of designing courses, with an emphasis placed clearly on strategy.

Not afraid to create something different, Gillett has designed one of the longest holes in the country, the 18th at Crondon Park, Essex. It measures a full 645 yards – though golfers will be pleased to know it's downhill all the way and normally plays with the prevailing wind. An additional feature at this Gillett designed course is a 19th hole, designed as an extra to be incorporated when one hole needs to be taken out of play for maintenance – or simply to change the length and playability of the course.

Martin Gillett's current commissions include the acclaimed pay and play at Little Hadham, Hertfordshire, one of a number of such courses the development of which Martin believes are essential to the future well being of the game. Three Gillett designs have opened in the past year. Details: Tel 0277 231371.



■ David McInnes, 31, has been appointed sales manager for the south of England by turf, amenity and landscape equipment specialist, Turfmech Machinery Ltd, Hixon, Staffs.

Working from Bicester, Oxon, David takes on responsibility for sales of Turfmech machines, including vacuum collectors, tractor-mounted blowers, fine cut rotary mowers, stone buriers and the recently-introduced trailed top dressers.

■ I don't know if league tables are kept of such things, but I understand from Whitnell Contracts Ltd, the Essex based golf course construction company, that they lay claim to a record by constructing 18 holes (and numerous water features) at Bletchingly GC in just 36 working days. In this period all works up to topsoil return and preparation were completed in readiness for turfing, which was undertaken by another contractor.

■ The first pay and play course to be constructed in the Sheffield region for over 20 years opened for play recently. The

nine hole family course at Bondhay complements the existing driving range and the new 18 hole course, which opens in 1994.



■ Cedric Johns has been appointed by the British Turf & Landscape Irrigation Association as its press officer. Involved in the UK irrigation market since its early days, his knowledge and journalistic skill will be utilised to improve standards of technical awareness – both in the industry and in the education of potential end users responsible for sports turf.

Speaking of CJ's appointment, BTLIA chairman Paul de Rham said "with him on the BTLIA team we plan to step-up our professional presence in the market and broadcast the message that high standards of irrigation design, installation, its use and the conservation of water should be taken seriously by our industry and end-users alike."



■ The Toro Division of Lely (UK) Ltd announced recently a programme of nationwide 'Workman Field Days', where the acclaimed Workman 3000 maintenance vehicle, left, will be demonstrated and made available for personal test drive; including the use of a wide range of attachments. Full details of the programme may be obtained from Toro dealers. Already well underway (it started on 13 September), the programme is proving most popular with greenkeepers and will continue until 29 October.

■ Driving Force Leisure have appointed David Murphy, latterly with Sta-Brite Supplies, as their rep. for Herts, Beds, Cambs, Northants and Warwicks.

■ The Irish Golf Greenkeepers Association is holding its first Turf Maintenance Exhibition in early November. This will bring together in Dublin suppliers of materials and services, both Irish and international, and will be the essential event for greenkeepers and those who maintain sports and leisure facilities throughout the UK and Ireland. The dates are 4-5 November and the venue is the Royal Dublin Society Showground, Ballsbridge, Dublin, which is easily accessible. Details and invitations from Fairlink Ltd., 58 Clonard Court, Balbriggan, Co Dublin. Tel: + 353 1 8411362. Fax: + 353 1 8412934.



■ Under the by-line 'they don't make 'em like that anymore', it was good to learn from John Phillips at St David's City Golf Club, Pembroke, that he still uses a turf cutter (by Patisson, I believe) which he thinks may first have seen the light of day before World War I. What's more, John tells me it still works perfectly. Does anyone know its history?

■ As a finale to their full time year of study, 15 National Certificate Greenkeeping students from Elmwood recently took a week long study tour to the Rhone – Alp region of France.

Based at the 'Lycee Horticole' they also visited France's oldest course, Golf Aix les Bains founded in 1913, and the six year old layout at Correncon en Vercors, which at over 4000 ft is under snow for four months of the year. (During this time the head greenkeeper works as a ski instructor). The 36 hole Golf Club de Lyon, and the nine hole Golf l' Isle d'Abeau were also visited during the study tour. Aspects of the design and layout and turf maintenance were discussed, and compared to the students studies at Elmwood.

Of course there was also time to relax; two of the clubs visited offered free use of their practice area. A free day enabled a look round Grenoble, then there was the coffee and croissants, warm sunshine, cool beer, alpine scenery... All things considered a successful tour was enjoyed by everyone.



■ A new recruitment consultancy, Golf Personnel UK, has been set up in Horsham, West Sussex, by Jessica Maddin, above. As the name implies, Golf Personnel UK specialises in golf trade related vacancies: club pro's, secretaries, stewards and, of course, greenkeepers – and makes no charge to applicants. Tel: 0403 823828.



■ Congratulations to Alastair Holmes, top, latterly head greenkeeper at Goswick, on his move to course manager at Seahouses GC. Also to Paul Seago, pictured below Alastair, latterly head greenkeeper at Royal West Norfolk, who takes on the exciting task of course management at East Lothian, stage managing those rare beauties – Gullane One, Two and Three. We wish them good fortune.

■ Members in Scotland and throughout the country will be saddened to hear of the passing of Harry Diamond's wife, Greta, after a long and valiant struggle against illness. Our deepest sympathies are with Harry and his family at this time.









★ Pictured at the IoG exhibition, BIGGA chairman John Crawford presents an award for furtherance of greenkeeper education – the BIGGA Education and Development Fund – to Gold Key supporter, Jonathan Harmer of Farmura Environmental Products. This award brings the total of Gold Key supporters into double figures, the presentation marking the tenth donation to the Fund.

## Countdown has started to BIGGA's main event

Harrogate is now only four months away – so read all about it now, make a note in your diary of the dates and get your place booked!

Included in this issue of Greenkeeper International you will find a copy of the Educational Seminar Programme giving details of the workshops and seminars together with a copy of the BTME Newslines. A booking form is also enclosed and as always, please book early especially if you wish to make use of BIGGA's education and accommodation packages.

At Harrogate, we will be launching the much awaited career video and if it receives as much acclaim as the recent training video, then it is bound to be a success. We have received numerous letters and telephone calls at HQ congratulating us on the professionalism and quality of the video on "Setting the Standards in Spray Application".

The Toro/PGA Student Greenkeeper of the Year Award is reaching its climax. As you will read on Pages 14/15, the eight finalists will meet at Aldwark Manor on 10/11 October to decide the 1993 winner and runners up.

The ICI Greenkeeper of the Year Award has now reached its next stage and the five regional finalists have been selected. They will now receive a visit to their course by Huw Parry, BIGGA's Education Chairman together with Richard Minton from ICI.

The five finalists will be featured in the next edition of Greenkeeper International.

### REASEHEATH COLLEGE

#### TRAINING – PAR EXCELLENCE!

Reaseheath College offers you the BEST in Greenkeeper Training – expert staff, superb practical training facilities (including a 9-hole golf course) and a wide range of courses

- FULL TIME: HND in Golf Course Management, plus Greenkeeping Options on BTEC First & National Diplomas
- PART TIME: Greenkeeping at NVQ Level 2 (as per GTC Training Manual), City & Guilds Phase III and Phase IV

For further details please contact Dennis Mortram at

**REASEHEATH COLLEGE**  
Reaseheath, Nantwich, Cheshire CW5 6DF  
Tel: (0270) 625131 Fax: (0270) 625665

# A BIGGA Thank you



**BIGGA GOLDEN KEY and SILVER KEY CIRCLES**

...to the following companies, in recognition of their continued support for the Greenkeeper Education and Development Fund



Professional Products

The Toro Company  
International Division  
Irrigation



Lely (UK) Ltd.  
UK distributor for Toro  
Commercial Products



**RANSOMES**



**HAYTER**

**farmura**



Together, we're building a great future for golf club, greenkeeper and game

For details of how you can support the Education and Development Fund, Contact BIGGA at Aldwark Manor, Aldwark, Aine, York YO6 2NF.  
Telephone: 0347 838581 Fax: 0347 838864



BIGGA: BUILDING A BRIGHTER FUTURE



DAVID HEMSTOCK on golf course drainage

# MANAGING WATER

It's official! According to figures from the National Environment Research Council, we have had a year of awful weather. Four years of drought conditions, which started at the end of 1988 and resulted in depleted water stocks over much of the country, have been countered by last winter's well above average rainfall and a gloomy summer with slightly above average rain, an awful lot of it falling in one of the wettest July months for 30 years.

The bad weather during the summer and autumn of 1992 was instrumental in the financial hardship felt by some new course development projects, adding to the misery of the trough of recession. Earthworks came to a standstill from June onwards for many, and the windows for proper seed-bed preparation and sowing were few and far between.

Judging by the number of enquiries we've received from existing clubs on drainage problems, many established courses had a wet and soggy time of it over the winter of 1992/93.

It's ironic, of course, that I should have co-written an article for this magazine, ('Too hot to handle', Jan 1992) just before the flood, based on the imponderables of global warming and the implications on drought and water use efficiency. Cue for the weather to hit back; predictably unpredictable in our corner of Europe.

Partly due to this unpredictability, we do have a tendency in the UK to avoid the issue when it comes to long term improvements to water sourcing and storage, drainage and irrigation. We can always be pretty sure that today's problem - drought or flood - is unlikely to last too long, and is quite likely to be solved by one of those characteristic 'mood-swings' in the weather. Install a new drainage system, followed by four years of drought, and you will have members muttering about over-draining (whatever that is) and the essential nature of fairway irrigation.

When dealing with a new course, the opportunity to tackle issues such as water sourcing and storage strat-

egy, the integrated design of drainage and re-contouring, and the efficiency of irrigation really should be grasped as early as possible. We know how important water is, where we need it and where we don't, but it is useful to take a look at the integral system, from cloud or sprinkler to outfall.

In essence, the water which is required in summer for irrigation falls in winter. If the course does not store water in winter for irrigation directly, mother nature does geologically or a water company does for a financial return. If the NRA allows it, and water passes by or through or lies under the course, abstraction and storage is possible. Of less interest to the NRA is the fate of drainage water, the constraints on use of this source are less rigorous than some of the others. Rainwater harvesting is a neat idea, i.e. recycling rainfall, avoiding potential pollution problems, making secondary use of a drainage system, but there are problems.

Firstly, if water percolates freely through the soil profile to groundwater, directing it through pipes may not be possible or may not be very fruitful. The type of course with this problem is also the one most likely to have water sourcing problems, unfortunately.

If this is not the case, but the contours do not naturally lead to a useful outfall, it may be possible to lead water away from a natural catchment, around the nose of a hill for instance, to an artificially extended catchment. This is assuming that infiltration of water into the soil is reasonable or that the soil can be manipulated to absorb water rather than allowing it to go, possibly to waste, as run-off.

The proportion of rain which becomes run-off or infiltration depends on many factors; slope, drainage, soil type and compaction status, rainfall intensity etc. On a compact soil, run-off may constitute virtually all of the fate of rainfall, similarly on a sloping site run-off may predominate in heavy rainfall events; this is the basis of the 'American' style, heavily re-shaped, course with swale and gully-pot drainage system which relies on run-off to work.

Run-off would normally find its way into an open watercourse or more permeable area and hence to drains or groundwater. It is quite easy to collect water as run-off in low spots where it lies, but to transfer it to the ideal position may often require pumping, which is better avoided if there is an alternative.

To increase the amount of water

finding its way into a drainage system, and therefore increasing the control of where it goes to, a more intensive pipe system is needed in conjunction with a permeable topsoil, or some method of intercepting water at the surface is required, by improving soil infiltration or by introducing drains and/or slits, grooves etc. with sand to the surface.

The technique for designing a rainwater harvesting system that I use is based on the contour bund (or grip) method used in Africa against erosion on sloping land and sometimes in forestry and moorland drainage. Drains or slits with a highly permeable surface area follow the contour with a slight grade to act as water interceptors. At calculated intervals the interceptors connect with a carrier system, which may be sealed to prevent 'blow-outs' occurring, which takes the water down the slope to the required place. The flatter the land in question, the easier it is to avoid problems caused by exceptional rainfall events.

I have covered the subject of drainage systems and installation in some detail in another previous article ('Drainage Decisions' Oct. 1992). Basically, purely from a drainage rather than a rainwater harvesting point of view, the system installed initially is usually there to keep the water table below the level of significant root activity as well as to collect areas of water concentration, i.e. hollows, bases of banks, greens, bunkers, springs etc. Operating below the surface layer, this system requires regular aerating or de-compaction treatment on most topsoils. If these treatments cannot effectively keep water infiltrating through the soil then help may be needed from a 'by-pass' system such as sand slitting - to remove water directly from the surface and transfer it to the carrier system. At the same time, the slit system is acting as a close-spaced soil drainage system, absorbing soil water and reducing compactibility potential. This is a key point: pipes and slits may not be there simply to pick up wet spots, a more important role may be to keep soils inherently dryer, thus reducing compaction problems.

If drainage water is being harvested, it is worth directing it to the chosen point with the maximum preservation of 'head', which might be useful. So, having directed water to a particular point, and solving problems on the way, how is it going to be stored?

I am personally very keen on

## GOLF COURSE DESIGN AND CONSTRUCTION

Two-day course in Norwich  
13/14 January or 17/18 February 1994

- DAY 1 - Specification for golf courses  
- Soils  
- Drainage  
- Green construction options  
- Quantities/costs
- DAY 2 - The concept  
- Design strategy  
- Green/Tee/Bunker design  
- Working drawings

Telephone John Glasgow on 0603 872734 for further information or enclose a payment of £188 with booking, made payable to Golf Course Technology Ltd, to cover the course fee, accommodation and dinner for one night to:

### GOLF COURSE TECHNOLOGY LTD

— DESIGN & CONSTRUCTION CONSULTANTS —

LYNG • NORWICH • NORFOLK • NR9 5RX

Tel (0603) 872734.

Please indicate either January or February course.



# EFFECTIVELY

water features on the golf course, whether or not they come into play. A round of golf is an encounter with nature, and anything which increases the diversity of flora and fauna on the course must be a good thing. However, an area of water designed to store water for future use will require some sort of treatment to disguise the draw-down that is inevitable once irrigation is underway. This could be very expensive, yet still not be particularly attractive or natural in appearance. Protecting banks from fluctuating water levels requires stone, concrete or similar revetment, gabions, mattresses, palisades, plastic reinforcement, or whatever. And the more shapely the edges are made in an attempt to soften the pond or lake appearance, the higher the cost is likely to be. Civil engineering solutions to a problem often prefer straight lines and even grades.

On this subject of water features with engineering implications, an interesting encounter with an NRA official recently revealed what might

be a possible development in their policy towards golf constructions with regard to water storage. Apparently the similarity between a golf course under construction and various mineral extraction sites had not gone unnoticed, particularly the laxity of controls on the former when compared to quarries, opencast sites etc. Very high run-off rates were to be expected on both, particularly the major golf course projects involving large amounts of topsoil strip. Rigorous demands on settling lagoons and balancing ponds common to mineral workings may become essential to golf and other developments soon.

Following construction, the very effective drainage systems of some courses, whether relying on swales and carrier pipes or under drainage and slitting could also cause problems downstream, with immense peak drainage flows compared to previous land uses. These abnormal peak flows could be blamed on over-efficient drainage, changes to catchment characteristics, or even on untreated and widespread com-



Half full or half empty? Optimist or pessimist; the weather makes us one or the other. Look objectively at long term climatic trends

paction on the course.

Perhaps the water feature installed as a combined golfing hazard and wildlife sanctuary might have a further dual role in storing water for future use and in temporary storage of potentially damaging storm flows.

In a true re-circulation system – where water is pumped back up to maintain flow of water through ponds to aid aeration or to occasionally top up water levels in ponds or storage reservoirs – a sizeable pump may be required. I say 'may be' because I have been involved with three new golf course developments where only a small, constant flow was required to maintain water levels, this within the range of the irrigation system itself to supply through a valve arrangement. However, all three systems were

designed to operate with a smallish pump feeding water from the outfall end of the watercourse system to separate from the irrigation main. Inevitably, moving large amounts of water costs a lot of money, but it is not just Kiawah Island clones that can justify total water management.

Managing water effectively in the UK means removing it efficiently from the rooting depth of the turf, applying it only when needed (which is a science rather than an art) and manipulating what passes through to maximum benefit, so long as the course of nature is perverted no more than temporarily and harmlessly.

● The author, David Hemstock BSc, runs his own golf course consultancy, David Hemstock Associates, specialising in aspects of golf course design development and construction.



**CLC Ltd**  
*Services include:*

- ★ Golf Course construction
- ★ Green & Tee renovation
- ★ Specialist drainage
- ★ Professional consultancy
- ★ Tree planting & management

Tring House, High Street,  
Cranleigh, Surrey GU6 8RL

**Tel: 0483 274800**  
**Fax: 0483 268593**

AD  
REF  
424

## THE VITAL LAYER TREVIRA SPUNBOND FOR TECHNICAL EXCELLENCE

TREVIRA SPUNBOND is a high performance polyester geotextile with outstanding physical properties, which will enhance traditional construction materials by raising performance and reducing costs.

**TREVIRA<sup>®</sup>**  
**SPUNBOND**

Ideal for golf courses, TREVIRA SPUNBOND can be used for bunkers, greens and fairways. The unique separation, filtration and drainage properties of TREVIRA SPUNBOND ensure that the course is rarely waterlogged.

**MONOMET**  
LIMITED  
50 Beddington Lane, Croydon, Surrey CR0 4TE  
Fax: 081 689 6876

**081 689 8990**

A Member of the **RMC** Group

AD  
REF  
428





**HAYTER CHALLENGE TOURNAMENT 1993**

# THAT'S THE

Three and a half inches of rain dumped on Sand Moor's eighteen holes in twelve hours or less adds up to an awful lot of wet stuff – enough, I fancy, to fill a fair-sized lake. Also, it occurred to me that if the Great Controller In The Sky bore a grudge on Yorkshire, which of course was a ridiculous thought, the spot chosen for His extra irrigation must have been Leeds. Dire warnings predicting floods, pestilence, doom and disaster, in Leeds above all other places, frequently interrupted every radio station as I travelled to Sand Moor, and though I may have swum through deeper rivers, there seemed a distinct possibility that sixty three golfing greenkeepers, along with their team managers and cheer-leaders, would soon be opting for an early bath and a return to base. As it poured and poured, playing the Hayter Challenge Tournament seemed less and less likely.

Thankfully, the deluge abated, at least the heavy stuff, and though players would experience the odd puddle of 'casual water', the stout-hearted green staff of Sand Moor, managed so capably by Bobby Barnes, were able to enact their game-plan according to King Canute, keeping most of the waters at bay on this free-draining golf course. That stated, even Bobby and his crew were powerless to repair all of the damage wrought by such liquid ferocity, for though many bunkers were washed thin of sand, there was no time for replenishment; the game had to continue!

Greenkeepers love the Hayter and Hayter's love greenkeepers. In fact, there is no argument amongst the cognoscenti, the most eagerly anticipated event in the calendar is that which is now titled the Hayter Challenge Tournament. After all, players in the Hayter don't get to compete just by being good guys, rather they earn their spurs the hard way, victorious in examinations of golfing prowess that include both section and regional qualifying events, playing golf to a higher level than their peers. To qualify for the final is a class act in itself, to win is every greenkeepers dream. Ironically, as this event is determined first by handicap, it is not such a crazy dream after all, for winning is within the reach of every golfer, as previous finals have often shown.

Wet weather makes for difficult playing conditions, and whilst Sand Moor's greens remained true, firm and speedy – enough to test any man – there was no measurable run through the green. As a professional golf watcher over the years, I fancy



**Winners all: top, Bill Francis, first in category one; main picture, Chris Hulme, first in category two; and Paul Jackson, first in category three**

## REPORT AND PHOTOGRAPHS BY DAVID WHITE

myself a dab hand at picking winners, kid myself I can spot a champ after a mere dozen shots have been fired. Playing the hunch, I drifted with the first game of the day, green with envy for the fluidity and suppleness of Martin Scothern and his plus one swing, mindful also of the innate talent of Mike Hughes, always a danger off his handicap of five. These two were my first 'bankers' and, bless their hearts, they both paid dividends. It was Martin Scothern who produced the lowest gross score, 111 for a round and a half of glorious golf under trying conditions, certainly acting as the lynchpin for the soon to be victorious Northern team, whilst Mike

Hughes won the premier trophy of the meeting, the Hayter Challenge Cup, with a nett score of 102.5. It was the same golf course for everybody, it just happens that Mike Hughes is the man with the trophy.

I've watched Mike quite a bit over the years, impressed always by his workmanlike approach to the game. The moment he bagged a majestic four at the second, after floating a soft wedge that could so easily have found the green into the greenside bunker, splashing out, and ferreting the putt, I knew this was to be his day. That he went on to fire a cluster of birdies spoke volumes for Mike's power of concentration – even he began to fancy his chances

– whilst Midlands team captain, Dean Cleaver, was often at his side, whispering words of encouragement.

Playing the hunch again, I nipped back a couple of holes to watch Bill Francis, a 'banker' for the South East if ever I saw one, finding him well out of character in shooting the rapids, visiting parts of the course best left to wild beasts. On two holes I watched him poke his tee shot into the boondocks, twice marvelling as he recovered with consummate ease. It says something for Bill that he's not given to panic, but it is not fair for an editor to hover at such moments of stress, so I pushed off elsewhere. Later I learned that my hunch was correct again, Bill's score of 107 in category one leading the class by 4.5 shots from Northern Ireland's Jonathan Guest (nice chap, full of strong, vibrant feelings for the occasion) and five less than Jon Moorhouse, the Midlands cornerstone.

Predicting winners in the second category isn't so easy, even practice rounds make 'em edgy, they're the 'anything might happen' brigade. Well, I'm telling you, when I spotted Chris Hulme early in the round, spied him through a camera lens, I couldn't believe my eyes. He has a ten handicap, swings like a three, hits the ball a country mile and is oh so tidy around the greens. Not surprising, then, that he should romp home, leading second placed Mathew Blake (S.W & S Wales) and the ever grinning Owen O'Connor (Eire), by eight glorious shots.

The seasoned reporter (for that matter, the seasoned golfer) must never write off those dark horses in category three, for with literally handfuls of shots, they often can prove an enormous upset. Whilst it's easy to kid oneself, it's tough to pick a 'banker' from these ranks. Paul Jackson hails from Bournemouth, working and playing at Ferndown, which by anyone's reckoning is a tough old test of nerve. A player holding 19 handicap at Ferndown might easily be a 14 elsewhere, such is its test of severity.

So, was Paul Jackson one of my bankers? I'm sorry to say that he was not, though around the turn at Sand Moor he revealed how lacking my powers of observation had been to miss him – this guy is really hot mustard, he hits the ball with meaningful vigour and must be regarded as a 'soon to be' candidate for category two, his score of 104.5 almost proving the upset of the day. Unlike Mike Hughes or Martin Scothern, I'll bet Paul can look back over his 27 holes and say 'if only I hadn't missed



# SPIRIT!



In the swing: Martin Scothern, left, who achieved lowest gross score and William McMeikan, under 21s winner

such and such a shot'... but such is the agony of golf. Suffice to say Paul's 104.5 was streets ahead of the second placed 112 of Toney Livingstone, and 7.5 strokes to the good of third man, Chris Powley. Chris also collected a nice award for being closest to the pin on a selected hole, whilst for the longest drive of the day we turned to the incredible Brian Mulholland, Northern Ireland's answer to John Daly and of not dissimilar stature. Brian is huge fun to be around, has a reputation for wicked humour – and we know he has a deft touch equal to Daly

regarding the right elbow!

Of the Scots, I must report less than perfect results, perhaps explained by the 'entertainments' enjoyed with those wild men of the Emerald Isle the previous night. Whatever, it was left to Alex Wallace and young William McMeikan to bring a smidgen of comfort back to the Scottish team, Alex's 118 taking the 'over 55's' award, William's the 'under 21's' with a score of 116.5.

When the accolades were given, there was a sense of elation in the victorious Northern team → 12



It's a gift: Alex Wallace, left, over 55s winner, receives congratulations and a prize from Kim Macfie of Hayters

Come with BIGGA to the  
GCSAA Conference  
and Show

# DALLAS 1994



The Golf Course Superintendents Association of America will be holding its 65th International Golf Course Conference and Show in Dallas from 4-7 February.

BIGGA's party attending this major international event will assemble on Sunday, 30 January at the Moat House Gatwick Airport, leaving the next morning on a *direct flight* to Dallas Fort Worth Airport and arriving back at Gatwick on Wednesday, 9 February.

In over 150 years, Dallas has grown from a cabin on the banks of the Trinity river into an internationally recognised commercial and manufacturing centre thanks to the discovery of Texan oil and the tenacity and spirit of its people. It is a major cultural centre of skyscraper banks and offices; elegant shops, fine restaurants and hotels. Neighbouring Fort Worth, originally a military outpost, retains a 'western' atmosphere and continues to be headquarters for the cattle industry. Fort Worth's clubs feature country and western music whilst its western heritage is most evident at the Historic Stockyards Area where there are frontier-style shops and cafes.

GCSAA will be organising more than 70 educational seminar sessions and forums, a three-day, 190,000 square foot trade show with more than 600 manufacturers and distributors of golf and turf industry products, supplies and services together with a gala banquet featuring performances by the Oak Ridge Boys and country star Crystal Gayle.

An exciting trip is in prospect and *bookings with full payment must be received by 19 November.*

#### ITINERARY

##### Sunday, 30 January

All participants assemble at the Moat House Gatwick Airport, overnight accommodation with FREE car parking is included.

##### Monday, 31 January

Depart Gatwick for Dallas Fort Worth Airport on British Airways – 10.05 hours – arrive 14.40 hours. Upon arrival transfer to Hotel Loews Anatole, stay 8 nights.

##### Tuesday, 8 February

Return transfer to Dallas Airport and depart on British Airways – 16.40 hours – arrive 07.30 hours on 9 February. Return transfer to Hotel to collect cars and drive home.

#### Price

£724 per person based on twin shares; £1,060 per person based on single room accommodation, plus comprehensive travel insurance for the duration: £35.

Included are: flights UK to Dallas and return; US Airport taxes; Hotel accommodation in the Loews Anatole including taxes, room rate only; Full comprehensive travel insurance for the duration.



Please forward full payment of £759 or £1,095 (unless travel insurance is *not* required) to BIGGA, Aldwark Manor, Aldwark, Alne, York YO6 2NF to arrive by *Friday 19 November at the latest*, together with name, address and contact telephone number.

# 'The spirit lives – it's called the Hayter Challenge Tournament'

11 → camp, for Ian Holloran and Bob Lupton a reward for all they had done behind the scenes, whilst no greater applause was ever heard than for the new sponsors of this wonderful tournament, Hayters PLC.

Taking over an established tournament is never easy, but Hayters have properly stamped the mark of 'A1 First Class' on the whole shebang, bringing a professionalism and a sense of real purpose to a tournament that is now rightfully their very own property. In everything the Hayter professionals touched, the trophies, the Hayter presentation packs, the Hayter flags, and the display of nifty looking Hayter machinery (I hope you all took a good, long look), the event shone clear. This event is very much the right stuff, a civilised haven for a few precious days, an escape from a world that all too often is tainted by greed and grossly over-paid sportspeople. The spirit lives – it's called the Hayter Challenge Tournament.



**Above: Hayter Challenge Winner Mike Hughes, centre, receives his trophy from BIGGA Chairman John Crawford as Kim Macfie looks on. Left: Members of the Northern Team receive their prize**

## RESULTS

**The Hayter Challenge Trophy:**  
Mike Hughes (Midlands) 102.5

**Low gross score:**  
Martin Scothern (Northern) 111.

**Over 55's:**  
Alex Wallace (Scotland) 118

**Under 21's:**  
William McMeikan (Scotland) 116.5

**Category One (0-9 handicap)**  
1st: Bill Francis (South East) 107  
2nd: Jonathan Guest (Northern Ireland) 111.5  
3rd: Jon Moorhouse (Midlands) 112

**Category Two (10-18 handicap)**  
1st: Chris Hulme (Northern) 106  
2nd: Mathew Blake (S. West & S. Wales) 114 (countback)  
3rd: Owen O'Connor (Eire) 114

**Category Three (19-28 handicap)**  
1st: Paul Jackson (S. West & S. Wales) 104.5  
2nd: Toney Livingstone (Midlands) 112  
3rd: Chris Powley (Northern) 113

**Nearest the pin:**  
Chris Powley

**Longest drive:**  
Brian Mulholland (Northern Ireland)

**Team Prize:**  
1st: Northern 916  
2nd: Midlands 943.5

## Financial Services to Members

The Association is pleased to announce that with the help of Peter Hoare & Co Ltd., a panel of F.I.M.B.R.A. registered brokers has been set up which is able to give pensions and related advice to members. The panel will consist of a total of 35 brokers across the United Kingdom enabling a local service to be offered. Each broker will be monitored to ensure a high standard of service is maintained.

Initially members' enquiries should be sent to BIGGA Headquarters at Aldwark Manor, to be forwarded to the local contact.

Members' attention is drawn to the enquiry card (postage paid) at the front of this issue of Greenkeeper International and it is proposed to feature this every alternate month.



All brokers in the panel have joined BIGGA as Associate members and there will be a strong representation at BTME '94.

In the meantime, members requiring information on the scheme should contact either their local secretary or John Pemberton at BIGGA HQ. (Tel: 0347 838581).

### PETER HOARE & COMPANY (Insurance Brokers) Ltd.

Ranmoor House,  
237 Graham Road,  
Sheffield S10 3GS.  
Telephone: (0742) 305305.  
Fax: (0742) 309494.

Neil Thomas, BA  
Executive Director  
British & International Golf Greenkeepers Association  
Aldwark Manor  
Aldwark  
Alne  
York  
YO6 2NF

12 August 1993

Dear Neil

#### Independent Financial Advice For Members

Many thanks for appointing us to act as lead member of a team of professional Independent Financial Advisers.

We are in the process of creating a list of first class advisers across the country in order to give BIGGA members unbiased and independent advice on any topic within our brief. You can be assured that the members will be pleased with the resulting response time and the ability to talk over their problems with a local IFA at their leisure with no pressure being brought to bear.

Being able to talk about any insurance company product has a distinct advantage compared with the restrictions placed on a representative of one company. All the panel will be in a position to deal with any insurance company and will do their utmost for your members. In fact, the rules of our governing body insist that the clients' interests come first and we must give the best of advice at all times.

The panel will be able to provide advice on pensions of all types - whether frozen or active - as well as setting up any new contracts required.

Life Assurance, Pensions and Investment can be very complex but you can have peace of mind in the knowledge that our panel members will be well versed in its intricacies.

We look forward to a long and happy relationship with your association.

Yours sincerely

*M G J Bower*  
M G J Bower  
Director

Directors:  
R.G. Boulford ACH FIBBA, A.F. Combe ACH,  
C. Staley, M.G.J. Bower, J.M. Spence FCH,  
B.F. Tomlinson ACH.  
P.J. Hoare MA FCH (non-executive).  
Company Secretary: K.A. Pope.

Company Registered in England No. 105119





# All other utility vehicles have just become endangered species

INTRODUCING THE **GATOR 6x4** AND **4x2** FROM JOHN DEERE

Traditionally, there have always been two types of utility vehicles: Either they were built for rough, off-road work, or for on-turf applications.

But now, two new utility vehicles threaten to send them the way of the dinosaur.

The Gator 6x4 and 4x2 from John Deere. Vehicles made to take on the off-road as well as work on turf.

Like their namesake, the Gators are rugged and durable. A heavy-duty, arc-welded body and a ribbed-box construction create a tough hide.

On grass, however, these Gators turn into gentle creatures.



Both Gators feature high flotation, low pressure tyres for work on turf.



The 6x4 and 4x2 have low sound levels, perfect for a golf course environment.

The reason is low compaction. Even fully loaded, the Gators have only 7.1 – 7.5 pounds per square inch (0.49 – 0.52 bar). By comparison most all-terrain vehicles have 20 and 22 psi

(1.38 – 1.52 bar). Now you'll understand why we're the only utility vehicles making impressions by not leaving any.

For more information about the Gator 6x4 and 4x2, see your local John Deere dealer or contact John Deere Ltd., Tel. 0949 863299.

## NOTHING RUNS LIKE A DEERE







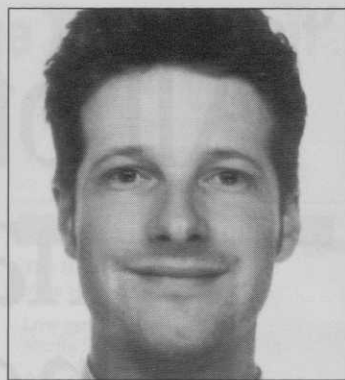
Alexander McAuley



Bridie Redican



Iain McCulloch



Jonathan Oldknow

# Meet tomorrow's



The field of greenkeeper education, or more specifically the training colleges around the country and across the Irish Sea, has seen a hive of activity lately, with the selection process to find the 1993 Toro-PGA European Tour Student Greenkeeper of the Year reaching fever pitch. In previous years 'approved colleges' were invited to nominate a student candidate, who then went forward automatically to the final. This year it was decided by both BIGGA and the sponsors that all colleges offering greenkeeping courses at craft level should nominate their 'Student of the Year', with regional finals staged to select the final eight candidates now featured.

Six regional finals have been held recently, the first at the Welsh College, followed by Oaklands, Cannington, Warwick, Askham Bryan and Elmwood. In addition, our colleagues in Eire and Northern Ireland held their own selection process. Thirty one nominations were named as 'student of the year' by their colleges, and by a process of interview and assessment we now have reached the final eight.

Huw Parry, BIGGA's education chairman, and Debbie Savage, BIGGA's new education officer, along with a representative from Toro-Lely, carried out interviews which sought to establish, amongst other things, a history of each candidate relative to a career in greenkeeping, their individual views on the benefits gained from their college course - including improvements they might like to see - and where they might see themselves in greenkeeping in, say, five years time. Judging by the comments received, we hope there are enough

'championship' golf courses for them all!

The winner, who will enjoy a Toro sponsored expenses paid trip to the USA, including student membership of the Winter School for Turfgrass Managers at University of Massachusetts, will be featured in the next issue of Greenkeeper International, as will the two runners-up, whose prizes will take them to a European Tour event as part of the PGA Support Team. The event takes place at Aldwark Manor on 11 October.

#### The Candidates:

##### ALEXANDER McAULEY

*nominated by Greenmount College, Northern Ireland*

Thirty six year old fitness fanatic Alex is not the sort you would care to upset, for in a jiffy he'll likely have you on the deck! Joking aside, Alex is an avid and highly accomplished practitioner of the art of ju-jitsu and boasts a yellow belt - which means he's pretty damned good.

He's also made impressive in-roads toward carving a solid career in greenkeeping, having begun his fine turf education as an apprentice with the City of Belfast, working at numerous different sporting locations and including a lengthy spell on the underrated but significantly important task of nurturing a bowling green to the standard demanded of championships.

Now with the Ballyearl Golf and Leisure Centre, he's been their head greenkeeper for some five years, during which time he's tucked an NJC in Horticulture and Turfculture under his belt and completed Phase II in Greenkeeping and Sportsturf Management, with a distinction in paper two. Currently undertaking some major course development work at Ballyearl, when this is complete Alex intends to concentrate more on what he describes as 'getting serious' about playing golf.

##### BRIDIE REDICAN

*nominated by Teagasc National Botanical Gardens, Dublin*

Glory be, for the first time ever we have a lady nominated for this prestige award, and a practicing greenkeeper to boot! Bridie is 25, lives in County Kilkenny and works as an assistant at the new Jack Nicklaus designed Mount Juliet, a course which played host in 1993 to a PGA European Tour event, the Carrolls Irish

Open. What a busy schedule Bridie has packed into her life, with a good deal of golf course experience, including construction of tees, greens and bunkers, in such far flung places as Australia and Michigan USA, all this before joining the team at Mount Juliet under Aidan O'Hara.

Bridie started her career by studying Horticulture at An Grianan College, though since becoming a full time greenkeeper she has followed the time-worn path of studying City & Guilds in Greenkeeping, working now toward Phase II with plans to continue with Phase III on block release.

Pat Suttle, Bridie's tutor at Teagasc, praises her conscientiousness and is fulsome in his admiration for her ability to compete - and to win - in what is often considered a male dominated profession. Like many who enter greenkeeping, Bridie is hooked on golf, though she does not have a handicap just yet - no matter, watch out Laura Davis!

##### IAIN McCULLOCH

*nominated by Langside College, Glasgow*

We may assume that Iain McCulloch has a strong right arm and a splendid pair of lungs, for he is a member of the Scottish fly fishing team - a Scottish Youth International no less - and he also plays the bagpipes as a member of the local band. He's just 20, took to greenkeeping first as a seasonal employee before catching the eye of his employers and being offered a three year apprentice at Torrance House GC. Iain has taken all modules in the Scotvec National Certificate in Greenkeeping and Groundsmanship, and was chosen as the best second year student in 1992. Not content to rest on such laurels, he will soon undertake further study by way of an HNC in Golf Course Management.

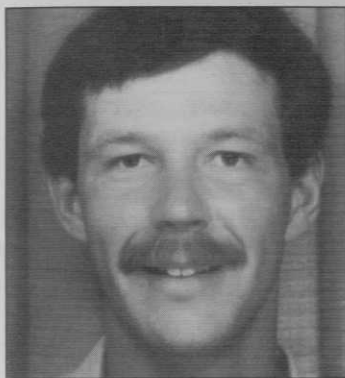
Writing of Iain, Langside tutor Colin Urquhart declared him a sound theorist and an eminently practical exponent of the art of greenkeeping, whilst bringing to the college an inspiration to others in his peer group, offering well rounded and coherent points of view, often with originality and insight. Guess what, he's a beginner at golf and is already 'hooked' - forgive the pun!

##### JONATHAN OLDKNOW

*nominated by the Warwickshire College*

Twenty six year old Jonathan was voted the





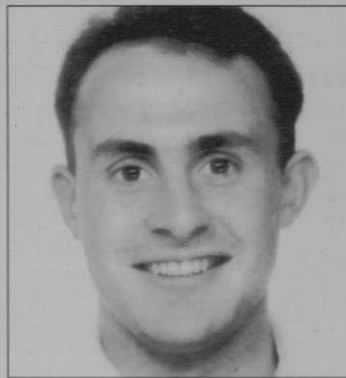
**Anthony Bindley**



**Mike Yorston**



**Richard Andrews**



**Christopher Solman**

# cream of the crop

Warwickshire's top practical greenkeeping student of 1993, having completed C&G in Phases I and II before moving to Year IV in Turf Management. Like so many who turn to greenkeeping as a career, he's a keen sportsman, having represented the City of Coventry schools in both football and cricket, whilst also nursing a pretty good golf swing to a handicap of 16. Full time education gained Jonathan six 'O' levels and an 'A' level, and he began his career with the Metropolitan Police Force – 'Oldknow of the Met' has a nice sound about it – but altered his ideas of a police career after a spell with the West Midlands Police Force, thus taking a complete change of direction by working for the Warwick Parks and Leisure Department. This valuable experience in sports turf management and horticulture, both practical and theoretic, brought him to his present task, that of assistant greenkeeper with the Coventry Hearsall GC.

Jonathan's tutor at the Warwickshire praises his leadership qualities, whilst being equally impressed by his extensive knowledge of plants, his commitment, his self motivation and his high level of initiative.

## **ANTHONY BINDLEY**

*nominated by Reaseheath College*

The catch-phrase in East Midlands golfing territory, as players quietly succumb to defeat at the hand of Anthony or his brother – the notorious Bindley twins – is to murmur 'I've been Bindleyed'.

Anthony, 30, is described as 'the quiet man of golf' by his tutor, Denis Mortram, also 'one who has excellent dedication to his chosen career, being highly perceptive and with the ability to work diligently whilst alone.' Not content with ringing Anthony's praises, Denis quietly let slip his opinion that Anthony is 'Reaseheath's best nominee for several years.'

Anthony has been in golf greenkeeping for three years, having taken C&G in Greenkeeping and Sportsturf Management at Phase II (and winning the 'Best Student' nomination) whilst working as an assistant at Kirby Muxloe GC. He plans to begin Phase III in the coming year.

Before Kirby Muxloe, Anthony spent a decade as an assistant groundsman at the Leicestershire County Cricket Club and, as you might imagine, cricket is as much a love as

golf. He's captained the village cricket club for the past five years – whilst 'Bindleying' his way to wins in the BIGGA E. Midlands Singles and Pairs Knockouts in 1992. Nice fellow, quiet maybe, but a deep thinker and a canny wee golfer.

## **MIKE YORSTON**

*nominated by Sparsholt College*

Mike, 24, is fortunate to work at that most delicious of Surrey courses, Worplesdon. Luckier still that he took to greenkeeping, for the job which has become so much a part of his life was originally a 'temp' post, a chance simply to earn enough to travel around Europe! Mike must have liked Worplesdon and they must have liked him, for the rest is history – three years working his way up to first assistant – whilst also taking C&G in Greenkeeping and Sportsturf Management at Phases I & II. In writing, Mike explained the Worplesdon job offer was 'too good to refuse', and he is deeply involved now in all aspects of course maintenance, priceless experience that includes a programme of clearing scrub and sucklings to encourage heather growth where it had been shaded by trees, also to the benefit of wildlife.

Hailing from New Zealand, it's not surprising that Mike is a keen rugby player, playing for the first team in the London New Zealand Rugby Club, but his sporting fancy also covers golf – playing to a mean 12 – and he serves on the Surrey section of BIGGA – a busy man. Like all Antipodeans he wants to travel, but his real ambition is to become a golf course manager – either here or on the sunny shores of New Zealand.

## **RICHARD ANDREWS**

*nominated by Oaklands College*

Richard, 26, is an assistant greenkeeper at Highgate GC, a post he has held for less than a year. OK, it's a short spell, but having been accepted at Oaklands on a full time ONC in Greenkeeping and Sportsturf Management, Richard knew full well which direction his new career would go and he threw himself into greenkeeping like no other. I suspect also that Richard doesn't ever do things by halves, you would never expect it of a man who this year alone has competed in a 25 mile walk, a 75 mile bike race and a half marathon, plus a swimathon for charity. By the way, he plays

tennis, golfs' well enough to shoot level par (his best) at Brent Valley, and likes taking photographs – phew!

Ian Merrick is fulsome in his praise for Richard, his 'Top Student and Award Winner' declaring him as being possessed of a high degree of personal motivation and taking particular pride in projects. Voted by his peers to become their course representative, in this capacity he became a member of their Greenkeeper Liaison Committee. Richard joined Highgate GC for just four weeks work experience under Derek Mason, the course manager, and as a direct result he's now full time at this London parkland club. Coming soon – Richard Andrews in Phase IV Business Management!

## **CHRISTOPHER SOLMAN**

*nominated by Pencoed College*

In humorously describing life before greenkeeping, Chris, 24, wrote of starting in sales – followed by nearly three years in the Army, where the attraction was to learn a trade and travel the world – and of being thoroughly disillusioned! His only trip was a boot-camp week in Scotland, his time spent playing rugby for his regiment at Bordon, Hampshire. The sum result was three months training as a vehicle mechanic, untold rugby games and lots of bull! – he quit. Returning to civvie street, quite by accident Chris was directed to labour as a summer worker at Cardiff GC. He thought his military training might come in useful (machinery maintenance, presentation, discipline, time-keeping, that sort of thing), and hoped, as he liked the life so much, that the club might take him on permanently. They did, he's been with them for four years now, the accidental start becoming a very smart career move indeed.

Luck has a way of following the lucky, and Chris admits to having his fair share of good fortune – Cardiff GC agreed to him attending Pencoed, he's currently completing his second year of Phase II G&STM, and he's soon to make a start into Phase III. His tutor, Peter Gillard, thinks Chris is rather special and wrote glowingly of his 'presenting the image of a very modern, progressive greenkeeper.' Peter's convinced he'll go to the top. By chance, Chris and Mike Yorston have much in common – Chris plays rugby and holds the record number of tries in one season at Tongwynlais – 32 in 18 games!






# Now, the Fusarium Control you've been waiting for!

New Rimidin is the latest addition to the Mascot Range of products from Rigby Taylor.

Rimidin is today's revolutionary answer to long term control of Fusarium, Dollar Spot and Red Thread. Technologically advanced Rimidin provides unrivalled performance.

Rimidin's performance has been confirmed in STRI Trials and offers unrivalled efficacy. Because of its systemic action Rimidin keeps on working after rainfall or mowing giving superb value for money.

Don't wait any longer for the Fusarium control you need. Talk to Rigby Taylor now for full information.

**Rigby  
Taylor** 

A **GROWING** FORCE IN LEISURE

 **FREE 0800 424 919**



# Kings of the castle



DAVID WHITE discovers a jewel nestling in the Edinburgh suburbs

Leaving the by-pass which skirts forever round the City of Edinburgh, bound to keep an appointment with Willie Blair at Kingsknowe Golf Club, I missed seeing any 'KINGSKNOWE THIS WAY' signs and for a while became hopelessly lost in a jungle of look-alike, mostly post-war housing. Recalling Pete Seeger's famous song, I thought the place could easily have been Pete's role model. The song begins "Little boxes, on the hillside, and they're all made out of ticky-tacky, little boxes,

little boxes, and they all look just the same".

Left with my own homing device and lacking guidance from the natives, all of whom seemed to vapourise as I searched, I scabbled around following instinct rather than map, before catching a sudden sweet glimpse – through high and extremely sturdy chainlink fencing – of Kingsknowe's lovely little golf course, a view that conjured up a wicked thought: a rose amongst thorns! Peering through the grill I sensed how it must feel to

be imprisoned and how inmates must react, looking out at the promised land – yet knowing it is out of reach. Granted, I was on the outside looking in, but Kingsknowe Golf Club seemed just such a place, inviting freedom and escape from an otherwise cramped suburb, a course overshadowed to the south by high-rise blocks and surrounded by an assemblage of anonymous houses and other assorted bits of 'ticky-tacky', yet with lush green fairways that beckoned and beguiled. → 18



## The Name Behind Britain's Top-Rated Turf

**When it comes to quality, we don't mess around.**

Take, for example, our soils. We use the best soils in the country for growing turf. Selected to grow turf that's strong and easy to lay, with no wastage. Selected for free-drainage of rain and irrigation water. And then there's the grass seed. We choose only the top-rated varieties of grass from the STRI Merit Lists - to give you not only the best instant effect, but the best long term results, too. And with a range of different grades, you can choose the most suitable for your purpose.

**Guaranteed delivery time.**

With a guaranteed delivery time for single-drop

loads, you won't be paying your men to stand around doing nothing. And if there's no fork-lift on site, don't worry... our mechanical off-loading facilities will ease the burden.

**Big or small roll.**

As you can see in the photo above, you can have Tillers Turf in either big or small rolls. To give you even greater flexibility, we offer a laying service too. Which means that if your staff are flat out with other jobs you can rely on us to deliver the turf, off-load it, and lay it to a high standard of workmanship. Of course, you may want to lay the big roll yourself, in which case we can loan you a suitable machine free. For a prompt quote, or to find

out where our distributors are nationwide, give us a call on 0652 650555. We will also send you a copy of our brochure. And to see for yourself why Tillers is the name behind Britain's top-rated turf we can send you a sample next day, as well.



**TILLERS**

Tillers Turf Company Ltd., Castlethorpe, Brigg,  
South Humberside DN20 9LG.  
Telephone: 0652 650555. Fax: 0652 650064.

AD  
REF  
292



# 'One of James Braid's

17 ➔ Do I malign this suburb of Edinburgh? I think not; for I reckon residents who have the Kingsknowe course on their patch are positively blessed. Further, as I later discovered, they are thrice blessed, for a tail-end of the Pentland Hills nips at their back door, peering moodily across the fairways. As a bonus, the views north to the Ocle Hills and especially toward Edinburgh Castle some five miles distant are simply stunning.

The course at Kingsknowe was opened in 1908, long before the ugly high-rise apartments were plonked out of place, certainly before the majority of Kingsknowe's surrounding housing plots attracted land-hungry developers. It is easy then to imagine how the territory must have appeared when James Braid cast his expert eye over what is now Kingsknowe Golf Club. Braid, Open Champion for the fourth time, obviously was not too busy with exhibitions to turn down the chance of an honest guinea or two for course design, and he must have liked what he saw, for this layout is simply one of his cleverest. It began life as a par 74 in the days of hickory, and is now par 69, stretched to its fullest extent to be no longer than 5975 yards. There is no vast grandeur as may be found at Gleneagles;

**Willie Blair:**  
'master of the  
golf course  
rather than  
its puppet'



where Braid designed The Kings, but with the meagre acreage allotted he certainly turned up trumps. The proof is there to see: Braid's only creation in the whole of Edinburgh is no simple rose amongst thorns, as I had surmised originally, rather a wee gem set fair in the outer perimeter of this ancient city.

Willie Blair, a man hugely proud of his greenkeeping heritage, is the custodian of Jimmy Braid's rather special patch. It was Willie who'd suggested my visit, urging me to 'come cast your eyes over a great little city course'. En route for Dunbar, I needed no second bidding.

Willie's greenkeeping career followed an

almost perfect learning curve, for he was apprenticed to the legendary Andrew Anderson at Gullane, a man oft likened to a professor and one who ensured his charges were expertly tutored in the art of greenkeeping. In the event Willie stayed with Andrew for close on fifteen years, giving every credit to this sadly missed old sage, declaring Andrew as the one who taught him everything. As a single example of the clever way Andrew worked, Willie told how during one season at Gullane the team lifted, rebuilt and restored six greens – without the membership knowing! Of course, those were the days before Arnie's Army, before courses were as overplayed as they are now and before the game, fuelled by TV, had reached fever pitch.

Readers travelling through East Lothian will surely have noticed the Lothianburn Golf Club, hard by the main road into Edinburgh. Slap on the east slope of the Pentlands, laden bounteously with broom and gorse, it was until recently over-run also with sheep! It was to this mountain-goat territory that Willie made his move after over fourteen years at Gullane, poached, would you believe, by two Gullane members who happened to be members also at Lothianburn. They'd seen how well Willie

## A NEW, SECURE GREENKEEPER WORKSHOP OR STORE IN DAYS!

**QUICK • CLEAN • SOLID**

Such is the exceptional versatility of the Enterprise high performance building system that you could be using your new workshop or store within 10-15 days.

With more than forty years as market leaders, we have developed a unique system which is quick to build, virtually maintenance-free and blends beautifully with its natural environment - an important factor when seeking planning permission.

With Enterprise you are planning for a predictable, durable solution that gives a solid and secure structure with minimum disruption and maximum space utilisation.

Call **Greg Preston** or **Stuart Campbell** today for more information and colour literature.

**Enterprise Buildings Ltd**  
Godalming Business Centre  
558 Woolsack Way  
Godalming, Surrey GU7 1XN  
Tel: 0483 426688  
Fax: 0483 426911



# cleverest layouts...'

performed as foreman on Gullane's Number Two, they knew his greenkeeping pedigree to be beyond reproach and they wanted him as their head greenkeeper. They persuaded the 29 year old to bring his wife and three youngsters to the wicked city!

From seaside links to heavy clay-based hillside site, when Willie arrived at Lothianburn it was so run-down that folk declared even raking the bunkers would show a big improvement! In the event, Willie took the place by the scruff and gave it a thorough shakedown, spending eight happy years there and leaving it a much better golf course than anyone could have imagined. He left to take over at Kingsknowe after Peter Dodds departed to Royal Aberdeen.

Working on just three golf courses in close on 40 years (he's been at Kingsknowe now for some 17 years) seems to me pretty good indication of dedication to the task, and in summarising that dedication it seems also that Willie thrives on what I'll call the 'high aggravation' factor.

Certainly there was aggravation aplenty at Lothianburn, with claggy clay and rocks galore, sheep to dodge, no water at all, not a single tap until Willie installed one, all this on a course that defied the laws of gravity. Now at Kingsknowe he works within the confines of just 110 acres: every inch parkland, every inch cultivated and every inch (including rough) cut to some degree, all in the interests of keeping the overplayed areas uncluttered, of speeding players through.

His course again is on clay, which is nobody's friend, and his predominantly meadowgrass greens grow on old clay puddle constructions (save one, the 17th). What's more, he's surrounded, literally, by a ten feet high fence, a la Colditz! What purpose does it serve? It keeps *some* of the vandals at bay (though last year alone over 400 flag sticks were stolen) and reminds, if nothing else, of trespass boundaries. Kingsknowe members cannot enjoy the luxury of timber benches, fibreglass flagpoles or decorative chains round tees – these simply would disappear. Last year the club lost, in addition to flags, some £15,000 of equipment to burglary, which has resulted in an elaborate alarm system being installed at the sheds.

On the course it's a case always of keeping the hard-played greens in good shape with, Willie hints, 'an old head and a little sulphate of iron'. Rather more, it is a case of composting the surfaces regularly (every six weeks or so) with sandy loam (which Willie swears by), and keeping the overly lush fairways cut every single day (he just can't stop 'em growing), in the summer months. Keeping thatch at bay demands regular spring and autumn hollow coring and the utilising of groomers and verticutters, Willie believing in working these tools hard and scarifying the daylight out of the Poa annua. With 600 members and a busy schedule of visiting societies to keep happy, this

is the only way he can manage – and it works.

He's mean on fertiliser, mean on water, in fact he's a believer in Jim Arthur's regime of austerity in greenkeeping, following it almost to the letter, though he admits he couldn't get away with one Arthurian practice – slitting in the summer months – certain that his members, '600 amateur greenkeepers', wouldn't stand for it.

Willie doesn't think he'll ever move away from Kingsknowe, content in the satisfaction the job gives him, happy to be working with a great crew and pleased to be amongst 'good club people who are nice to work with'. He's an honorary member of the club, he sits on committee, prepares monthly reports and presents his own budget. Granted he seeks approval for such expenditure, which is normal enough, but Willie feels he's master of the golf course rather than its puppet, not having to rush for 'second opinions'. In a nutshell, he appears to have Kingsknowe licked, though I reiterate, he thrives on conditions from which I would run a mile: those that would top my 'high aggravation' list.

There can be but few greenkeepers who don't know 'Our Willie', especially through Association activities. He's been secretary of the Scottish East section for 15 years, beginning with SGGA and latterly SIGGA before amalgamation some five years ago into BIGGA. He says "I don't know what I'd do without it", and one is moved by his sincerity, aware that he's the Association's most ardent ambassador, devoted to the hurly-burly; the selling of a greenkeeping philosophy. He gets peeved when discussing those greenkeepers who distance themselves from BIGGA. Far too many, he thinks, even in such a golfing enclave as Edinburgh. "They say they won't join because they don't play golf", he says, "but the Association was never set up for golf alone. We're about education, about seminars, about training people and helping them to be

better at their job" – OK Willie, I'm convinced!

I found myself charmed by Kingsknowe, despite first reservations, and Willie Blair warmed me greatly. As we ended he leaned across, grinned, and spoke directly into my recorder: "I'm just a routine worker", he whispered, "I never say a word out of place and I get on well with everyone"...OK Willie, I believe you, I'm convinced!



**On the horizon at Kingsknowe GC: top, the clubhouse with Braid Hills behind; one view across to the 'high rise horrors'; and a city vista, with Edinburgh castle in the background**



# New Concept in Rotary Mowing



AN AFTER CUT APPEARANCE YOU CAN BE PROUD OF

## Guardian<sup>®</sup> 72" Recycler<sup>®</sup>

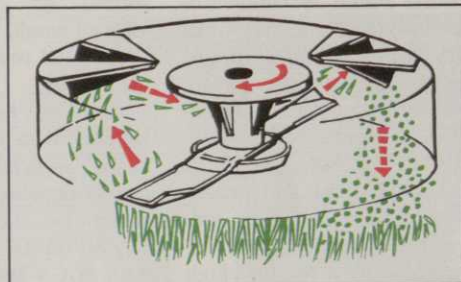
The Toro Guardian 72" Recycler introduces sophisticated deck technology to reduce clippings and enhance safety.

The new Recycler system provides the safety of no discharge as debris is forced downwards within the mowers width reducing the risk to pedestrians and property.

The Guardian Recycler has an innovative deck design which cuts and recuts the grass 10 to 15 times more than conventional mowers. This exclusive feature eliminates unsightly windrowing so staff are free to perform other duties rather than raking and collecting.



The result is an excellent after cut appearance. So for all the 'inside facts' phone or post the coupon now.



### TORO

Distributed by LELY (UK) LTD  
STATION ROAD, ST. NEOTS  
HUNTINGDON, CAMBS PE19 1QH  
Tel: 0480 476971  
Fax: 0480 216167

**TORO**

*in a class  
of their own*

Please send me details of the Guardian 72" Recycler and address of my nearest TORO dealer.

Name (Block Caps please) \_\_\_\_\_

Student   
Address \_\_\_\_\_

Post Code \_\_\_\_\_

GI 10 93





The John Deere 3235 lightweight fairway mower has a 32hp diesel engine and can be equipped with either seven-bladed, 5in reels or eight-bladed, 7in reels. Inset: Powered brush on Allett's Tournament mower now has more coils per inch and uses polyethylene bristles.

# CUTTING EDGE



## MICHAEL BIRD examines cylinder mower developments

Anyone visiting the IoG Exhibition at Peterborough hoping to compare the merits of triplex-type greens mowers would have been struggling to spend much more than half an hour at the event. With the exception of John Deere, all of the leading manufacturers of such machines had decided to give the show a miss for 1993.

Their reasons ranged from a dislike of the location to the fact that they had little new to exhibit or had better things on which to spend their money. In the first case, at least, the return of the show to Windsor next year should please a number of companies, particularly those hoping for a more international event.

John Deere's managing director, Alec McKee, agreed that the show needed to attract more overseas visitors and the move back to Windsor would help in that respect. "However, we have the situation in the UK where there

are several large events during the year aimed at the grounds maintenance industry," he commented. "All have their slight differences, but they also overlap in many areas. The organisers of each really should get together so that we have just one major show in this country - a truly European event, which could be supported by all companies within the industry."

John Deere's decision to attend Peterborough in 1993 was rewarded by a steady stream of visitors and those on the look out for innovations on the company's stand were not disappointed.

Now available with a diesel engine is the John Deere 2243 greens mower. Introduced "to meet user demand", the machine has a three cylinder 18hp Yanmar engine, rubber mounted in the mower's frame. The engine has been set up to meet Californian emission standards, which are among the toughest in the → 23

## LOCKWOOD GRASS MACHINERY

LESCO THE GREENS MACHINE THAT  
MAKES ECONOMIC SENSE FOR  
TODAY'S GOLF COURSE



**SOLE UK IMPORTER FOR LESCO**

Unit 17 Greenwich Close, Landseer Road, Ipswich, Suffolk IP3 0DD  
Telephone: (0473) 289158 Mobile: 0850 745055 Fax: (0473) 289161





# A simple trick of the trade

BL  
~~trade~~

For over 100 years we've been designing grinders and we've learnt a few tricks in that time - however, they're tricks that benefit you, the user...

*...like the simple* flat bed of an Atterton, the natural way to grind a cylinder, in the upright position

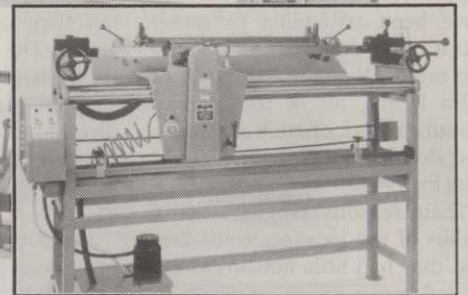
*...like the simple* choice of either in-situ grinding with the whole machine up on that convenient flat bed, or separate cylinder grinding when the machine's stripped down

*...like the simple* single pedal clamping device, perfected by Attertons to provide easy, accurate fixing when grinding the cylinder in-situ

*...like the simple* method of operation, to accurately and efficiently grind cylinders, either way, with a minimum of operator effort

*...like the simple* fact that there's nothing quite like the EXPRESS DUAL available today...except its partner, the ANGLEMASTER, Britain's premier bottom blade grinder...together they form a formidable duo for today's modern workshop.

*The trick of the blade?... grind with an Atterton and then cut the grass...it's no trick...it's magic!*

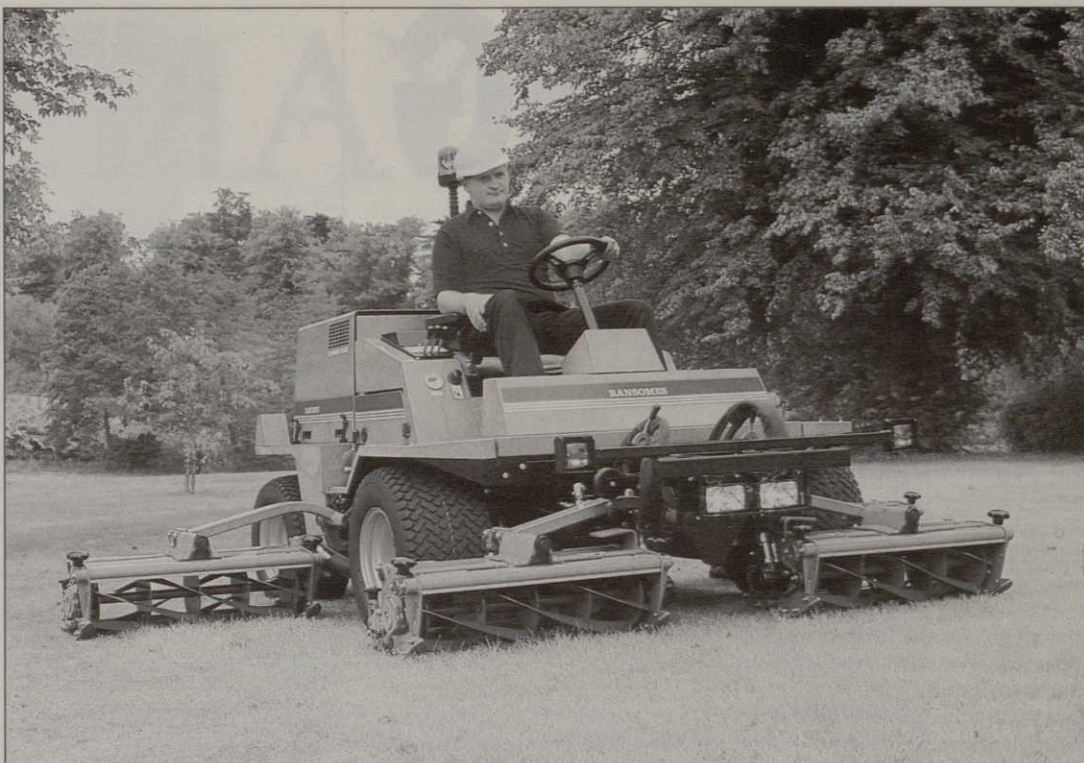


**ATTERTON & ELLIS LTD**  
*Manufacturers of fine Grinders for over 100 years*

**Iron Works, Haverhill, Suffolk CB9 8QH**  
**Tel: (0440) 702312 Fax: (0440) 712138**



Suitable for mowing large areas of parkland and sports turf, Ransomes' Commander 3500DX can be equipped with 6, 8 or 11 knife cutting reels



21 → world. The mower has no gearbox. Its transaxle is direct driven from the engine via a two-section hydraulic pump. One section drives the reel motors, the other supplies the steering and cutting units' lift rams. Apart from the 'Diesel' logo, the only visible difference between the petrol and diesel-engined machines is the rear hood which has been raised slightly to accommodate the taller power unit. Available next Spring, the JD 2243 diesel greens mower costs from £12,887.

Two cutting reel options are offered on two new lightweight fairway mowers also launched at the IoG exhibition by John Deere. Labelled the 3215 (25.5hp) and 3235 (32hp), the machines have been designed so that users can select the optimum power output and cutting unit to suit their grass and terrain. The smaller machine is offered only with standard seven-bladed, 5in diameter reels, said to be suitable for any turf type, but particularly the more delicate grasses found in cooler climates. Either the standard units or heavy-duty, eight-bladed, 7in diameter reels, can be specified for the larger JD 3235 fairway mower, the latter being better suited to longer, lusher conditions. Both reel types are 22in wide and feature a patent-applied-for mounting to the rear of the cutting unit. John Deere say that the design maintains a balanced force over the front and rear rollers keeping the cutting unit level and in more solid contact with the turf. Available with

four-wheel drive, fairway groomer and verticut options, the mowers are priced from a little under £21,000.

Although absent from Peterborough, both Toro and Ransomes announced new five-gang ride-on mowers to coincide with the IoG show. The Toro Reelmaster 4500-D is based on the RM 450-D, but

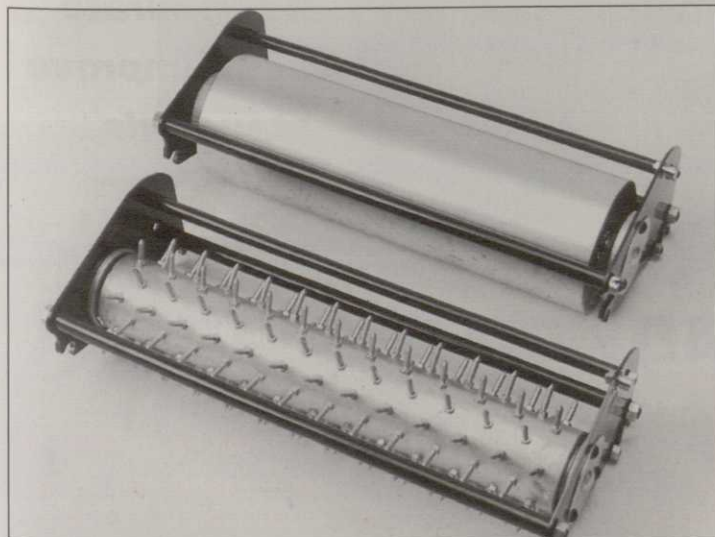
features some important upgrades including a four wheel drive option, a larger capacity engine, a new cooling system and a four post roll-over protection structure, the latter standard on the four-wheel drive mower and optional on two-wheel drive machines. Four-wheel drive is engaged by a switch on the instrument panel and operates in forward mode only. The engine has been changed from the Mitsubishi 4DQ5 (50hp governed down to 40hp) to the latest Mitsubishi 4DQ7, rated at 55hp. This is governed similarly down to 40hp, but the additional power available throughout the speed range will, says Toro, reduce noise levels and help prevent smoking under heavy load. A new water pump, two speed electric cooling fan and larger capacity radiator provide for cooler running, assisted by a new air intake and cooling system, now drawing air from the rear. Available with 5, 7 or 11 bladed reels, the 3.5m (11ft 6in) cut Reelmaster 4500-D costs from £25,725.

Also offering a maximum cut of

3.5m is the new Ransomes Commander 3500DX, a five unit mower suitable for parkland and sports turf. It has full hydrostatic transmission, on-demand four wheel drive and a choice of 6 knife fixed head and 8 or 11 knife floating head cutting unit options. Power comes from a 51hp diesel helping produce a maximum workrate of 3.2ha/hour at 12.5km/hr (8 acres/hr at 7.5mph).

Features designed to improve cutting performance and operator comfort include variable cutting speed reel control, a differential lock, articulating mower wing units for work on slopes, a rubber-mounted operator's platform and fully-enclosed engine compartment. An optional all-weather cab with roll-over protection structure is available for the new Commander 3500DX, which costs from £23,339.

Described as a tees and surrounds mower, the Sabo Roberine C400 from Claymore Grass Machinery offers a number of interesting features which extend its versatility for those looking after a variety of grass conditions and areas. The basic machine resembles a triple greens mower having a rear-mounted 16hp diesel engine, hydrostatic drive, rear wheel power steering and up-front driving position. However, the two front cutting units have hinged rear deflectors which, when raised, allow grass to be discharged direct from the rear of the unit. With the deflectors down, grass can be collected in the normal manner in the optional front grass boxes. On the rear cutting unit, the grass collector fits to the rear of the assembly, removing the need for any deflec-



Latest cassette attachments for the Dennis FT510 mower are a turf roller and a Sorrel surface aerator



# CUTTING EDGE

23 ➔ tor. Price of the 1.8m (6ft) cut C400, complete with three-wheel drive, fully-floating 7 bladed reels and de-luxe seat is £12,250. Grassboxes and 5 or 10 bladed reels are optional.

First seen at last year's IoG exhibition, the Green's 20in super-fine pedestrian mower now has a name - Romax. The 10-bladed machine includes a number of detail improvements as a result of testing by selected golf clubs over the past year. Probably the most important is the fitting of an indexing adjuster for bottom blade adjustment, with a quarter turn of the hand wheel giving a thousandth of an inch blade movement. Price of the Green's Romax is from fl,800. Turf combs and transport wheels, yet to be priced, are extra.

Staying with pedestrian mowers, Allett has modified the powered brush on its Tournament 20in greens machine. The fully adjustable brush serves three main purposes: It keeps the front roller free of grass build-up to maintain a consistent height of cut; it brushes the turf, promoting healthy growth; and it helps lift lateral growing and flattened grasses for a complete cut across the full mowing width. Changes to the spiral brush include increasing the number of coils per inch and moving from nylon to polyethylene bristles. The result, according to Roy Allett, is an improved grooming action and extended working life. Price of the Tournament mower is £1,995.

Lloyds of Letchworth is introducing a 24in version of ➔ 27



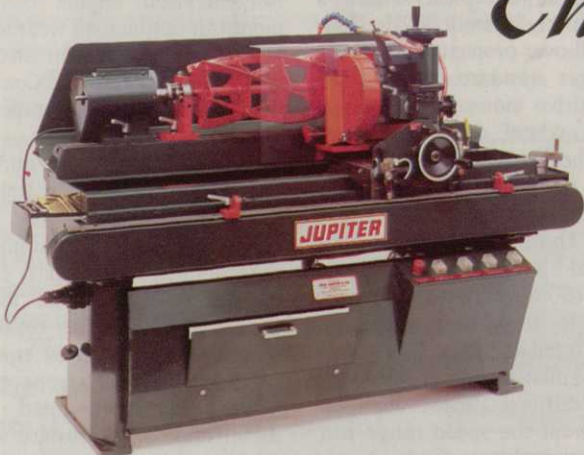
Shortly to be offered with a 10-bladed cylinder, the Masport Olympic 500 combines a 'no-frills' design with an economical purchase price



## ERIC HUNTER GRINDERS LTD

HOBSON INDUSTRIAL ESTATE, BURNOPFIELD, NEWCASTLE UPON TYNE, NE16 6EB. TEL: (0207) 70316 FAX: (0207) 70312

### The Rolls Royce Range



42" capacity Mower Cylinder and Bottom Blade Grinding Machine. A truly 'precision' grinder, built to last half a century. Used and preferred by professionals.



The NEW JUNO 36" capacity Cylinder and Bottom Blade Grinder will accommodate every make and type of Professional and Domestic cutting cylinders and soleplates. Simple to operate, fast changeover from cylinder to bottom blade grinding.

**Quality  
engineering at  
its accurate  
best. Improve  
standards  
- cut costs**

## THESE CLUBS ALREADY DO IT!

- Bramley Golf Club
- Gleneagles Hotel
- Mold Golf Club
- Rye Golf Club
- Caldy Golf club
- Goring and Streetley
- Muirfield (Gullane) Golf Club
- St Andrews
- Carnoustie Golf Links
- Hags Castle Club
- Newbury & Crookham Golf Club
- Slaley Hall G&C Club
- Cawdor Golf Club
- Harpenden Golf Club
- Northwood Golf Club
- South Moor Golf Club
- Charleslands Leisure (Co. Wicklow)
- Kinross (Green Hotel)
- Omonde Fields Golf Club
- Tehidy Park Golf Course
- Chirk Castle Golf Course
- Leek Golf Club
- Pine Ridge Golf Club
- Telford Golf Club
- Collingtree Leisure
- Lingfield Park
- Ponteland Golf Club
- The Vale Golf & Country Club
- Crompton & Royton Golf club
- Malone Golf Club
- Royal Ashdown Forest Golf Club
- Turnberry Hotel
- Delapre Golf Complex
- Massereene Golf Club
- Royal Dornoch Golf Club
- Wellingborough Golf Club
- Eaton Golf Club
- Mere Golf & Country Club
- Royal Liverpool Golf Club
- West Herts Golf Club
- Ely City Golf Club
- Milltown Golf Club (Dublin)
- Whitecraigs Golf Club



BEDS  
Bedfordia  
Groundcare Ltd  
0234 826262

BUCKS  
Risboro Turf Ltd  
0844 274127

CORNWALL  
Hennings  
Horticultural Ltd  
0326 250020

COUNTY CORK  
John O'Flynn  
and Son Ltd  
010 353 21314088

DEVON  
Devon Garden  
Machinery  
0803 872124

DUBLIN  
Dublin Grass  
Machinery  
010 353 1 386995

DUNDEE  
Powershift  
0382 24152

DYFED  
Pro Turf  
Equipment Ltd  
0267 233648

EAST SUSSEX  
John Shaw  
(MACH) Ltd  
0825 872070

ESSEX  
Cowies Eastern  
Tractors Ltd  
0245 256281

Grasshopper  
Horticultural Ltd  
0245 362377

GALWAY  
JW Tool Services Ltd  
010 353 91 56321

GLASGOW  
Nairn Brown  
(Glasgow) Ltd  
041 644 3563

GRAMPIAN  
Allan Gammie  
0561 377355

GWENT  
Ted Hopkins  
0633 680754

GWYNEDD  
Major R Owen Ltd  
0766 770261

HANTS  
New Forest Farm  
Machinery Ltd  
0425 472572

Golf & Turf  
Equipment  
0734 326484

HERTS  
Golf & Turf  
Equipment  
0438 820879

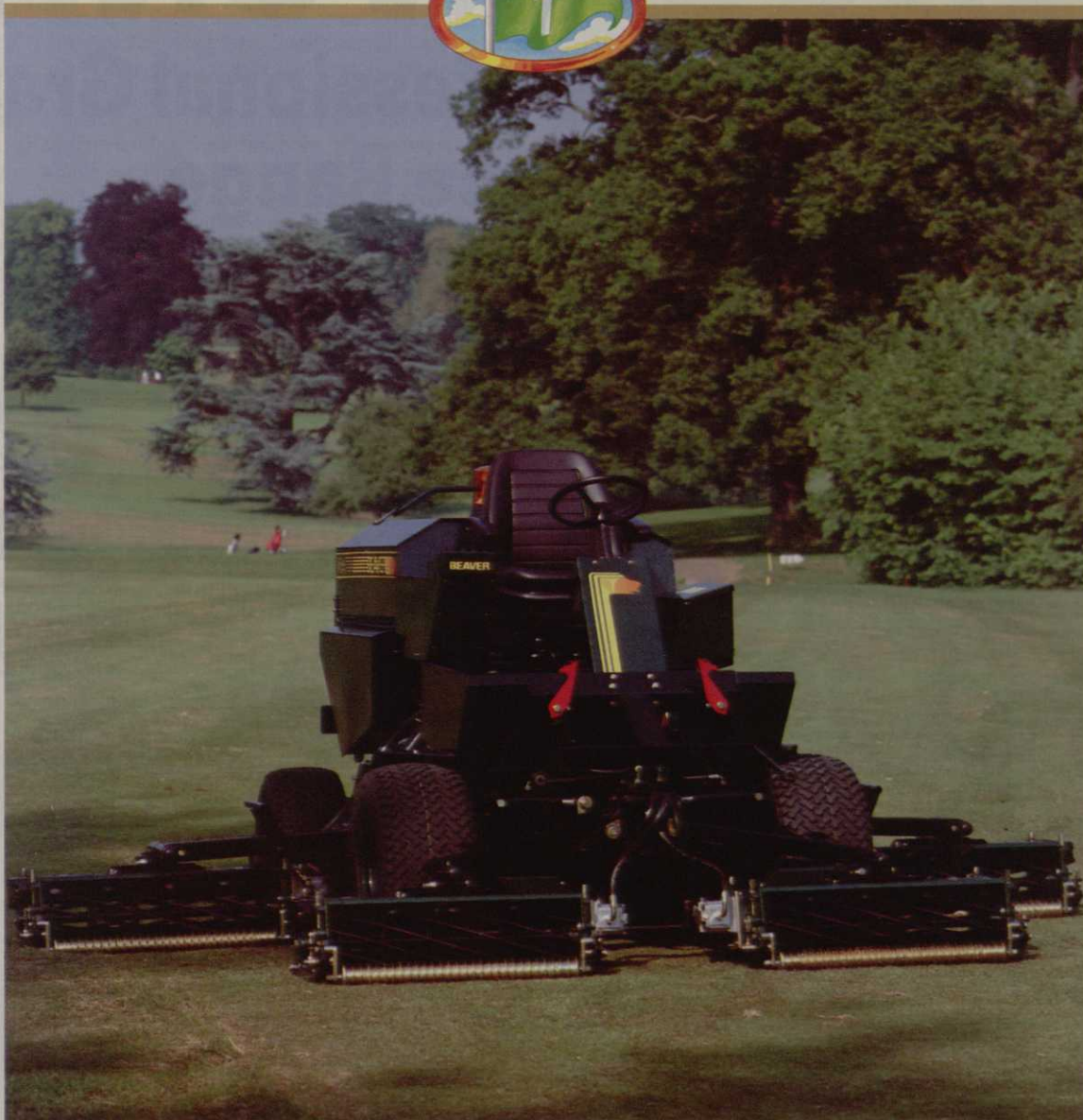
J Middleton Ltd  
0462 892528



# HAYTER

## THE COURSE LEADER

T44



ISLE OF MAN  
Isle of Man  
Farmers Ltd  
0624 626600

KENT  
Drake and  
Fletcher Ltd  
0233 625044

LANCS  
Gibsons Garden  
Machinery Ltd  
0772 682516

NORTHERN  
IRELAND  
Cyril Johnston  
& Co Ltd  
0232 813121

NORFOLK  
Ben Burgess Garden  
Equipment Ltd  
0603 628251

NORTHANTS  
Woodlands  
Brigstock Ltd  
0536 373238

NOTTINGHAM  
Mitchell Farm  
Industries Ltd  
0785 787987

ORKNEY  
John Scarth  
(Eng) Ltd  
0856 2601

SHROPSHIRE  
Motrac Ltd  
074 381528

SOMERSET  
Rochford Garden  
Machinery Ltd  
0963 33713

STAFFS  
Mitchell Farm  
Industries Ltd  
0785 42341

SUFFOLK  
Tomlinson  
Groundcare  
0449 736060

SUSSEX  
John Shaw  
(MACH) Ltd  
0825 872070

TYNE & WEAR  
Fewster Agric  
Services Limited  
091 236 4155

WARKS  
WFI Grasscare  
0789 204073

WIGAN  
F R Sharrock Ltd  
0257 422710

WILTS  
G J Handy & Co Ltd  
0793 721615

WORCESTER  
Ron Smith & Co Ltd  
0905 23887

YORKSHIRE  
H C Professional  
Grass  
M/C Ltd  
0924 201875

### THE PROFESSIONALS' NUMBER ONE CHOICE

Truly way out in front, the T44 is the self-propelled gang mower. The only choice you need to make is 10" fixed or 8" floating heads with 6, 8 or 10 knives. Ample power, advanced controls, weight transfer,



four-wheel drive and differential lock combine to make this machine your perfect playing partner. To proceed further in your quest for perfection, call your dealer today for full details and a demonstration.



# WHOLE IN ONE!

## The Complete Professional Grass Maintenance Range



### NATIONAL 68

Award winning model. Full 68" cut, folding side cylinders. 7½ hp Kawasaki engine. Cuts over 2 acres an hour.

**£3750**

### RECIPROCATOR

One revolutionary cutting head, trims around golf bunkers, ditches, pond weed – even cuts under water.

**£425**



### MUSTANG

The go-anywhere, rugged 42" ride on rotary mower. Specially suited to bank mowing. Grass collection optional.

**£3795**



### RECIPROCATING EDGER

Two reciprocating blades deliver precise cutting power, and a smoother and safer operation.

**£553**



### WALKOVER PROFESSIONAL

The unique, maintenance-free pump, enables accurate and fast spraying of fertilisers, fungicides and weedkillers. Other models available.

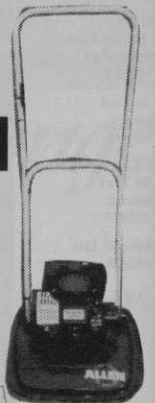
**£468**



### HOVER MOWER

218 si Hover Mower 18" cut powered by 120cc Suzuki two stroke engine. Other models available.

**£399**



**For a Free Brochure complete the coupon below or phone 0235 813936 Now!**

To: Allen Power Equipment Ltd.

Dept. G.I., The Broadway, Didcot, Oxon OX11 8ES

Name .....

Address .....

Postcode .....

Tel. ....

Please send me details on:

- National 68
- Reciprocating edger
- Walkover Professional
- Brushcutters
- Mustang
- Hover Mowers
- Reciprocator

GI.10.93



**Allen Power Equipment**  
The Broadway · Didcot, Oxon OX11 8ES

**0235 813936**

\*Prices exclusive VAT.

**Plus**

A range of top quality professional brushcutters 26cc – 50cc with full anti vibration system.





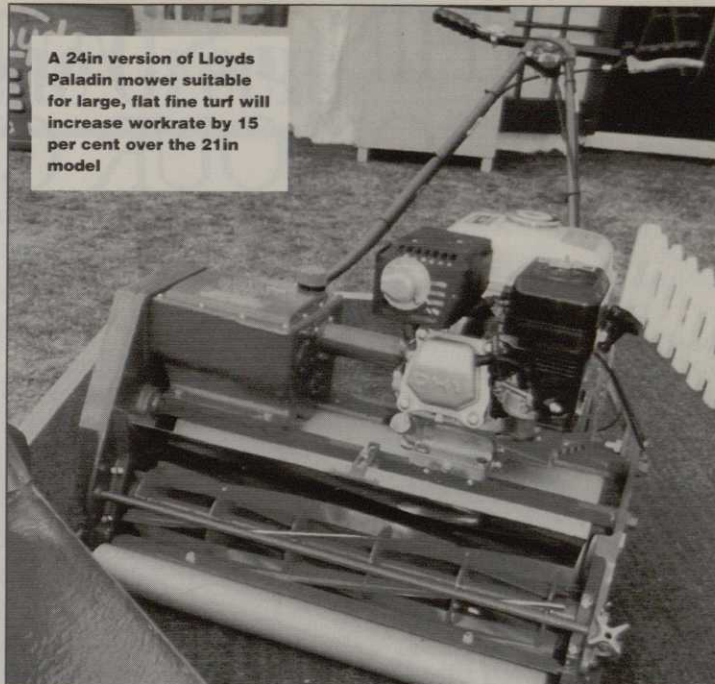
# CUTTING EDGE

24" its long-established Paladin mower, to be sold alongside the 21in model. The 18in Paladin is to be discontinued. The principal change is to the width of the aluminium rear roller and 5 or 9 bladed cylinder, although Honda's GX120 4hp engine is now used on the range. Ideal for large, flat greens, the 24in Paladin weighs just 3kg (6.6lb) more than its 21in stable-mate. Price is expected to be around £2,200 when it goes on sale for next Spring.

Dennis, winner of the most innovative new product at last year's IoG exhibition with its FT510 20in fine turf mower, has extended the range of cassette heads available for the machine. A turf roller and sorrel-type surface spiker are now available, with a slitter and wire rake currently undergoing prototype testing. All are interchangeable in less than one minute without the use of tools.

Finally, one name which would not spring immediately to mind when discussing pedestrian greens mowers is Masport, distributed in the UK by Autocar Equipment Ltd. Although badged as Masport, the mowers are in fact now built by New Zealand company, Steelfort, following the take-over of Morrison by Masport, and the resulting rationalisation.

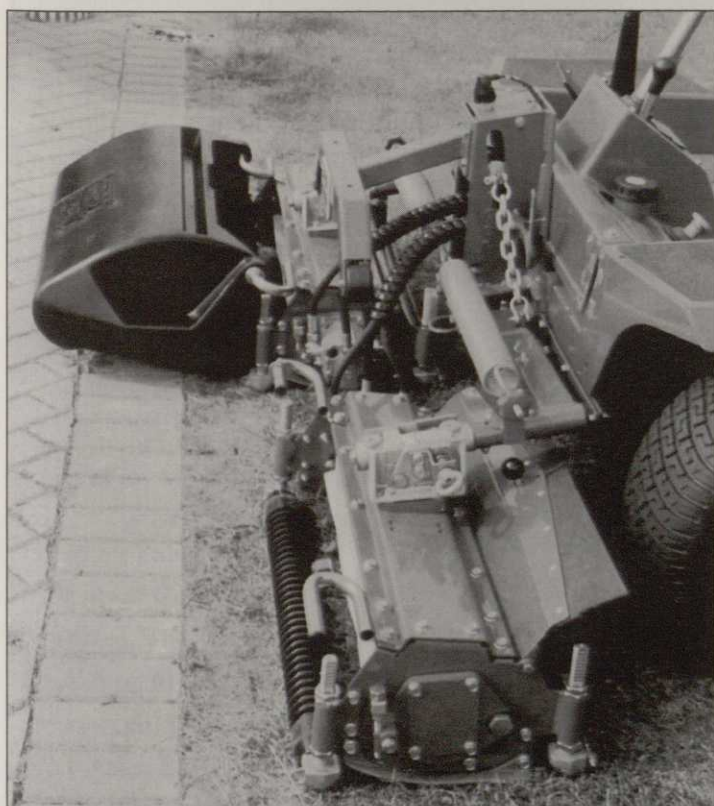
If price is a major consideration, it could well pay greenkeepers seeking a 'no frills', sturdily-built machine to take a look at the Olympic range, especially when a 10-bladed cylinder option becomes available next year. Estimated price of the Masport Olympic 500 with 3hp Tecumseh petrol engine, 20in cut and self-adjusting chain drive is under £900. Although not seeking to be placed in the same class as the top professional pedestrian greens mowers, it is still expected to cut fine turf very nicely, thank you, at considerably lower cost.



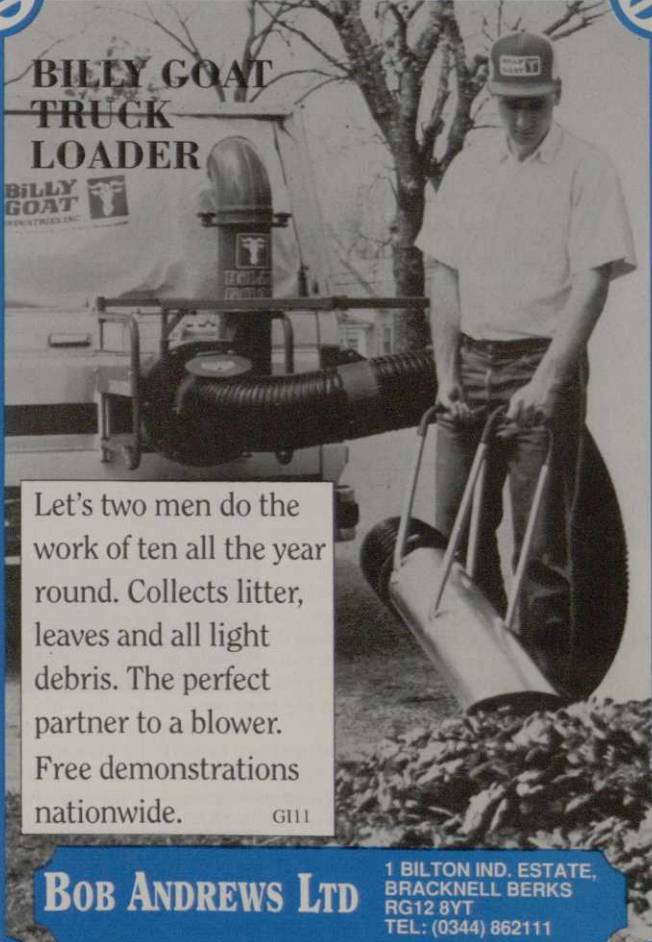
A 24in version of Lloyds Paladin mower suitable for large, flat fine turf will increase workrate by 15 per cent over the 21in model



A roll-over protection structure, four-wheel drive and improved cooling system are key features of Toro's Reelmaster 4500-D



Raising a hinged deflector on the Sabo Roberine C400's front cutting units allows grass to escape rearwards (nearside unit). Lowered, the deflector directs grass into the optional collector



**BILLY GOAT  
TRUCK  
LOADER**

**Let's two men do the work of ten all the year round. Collects litter, leaves and all light debris. The perfect partner to a blower. Free demonstrations nationwide.**

G111

**BOB ANDREWS LTD**  
1 BILTON IND. ESTATE,  
BRACKNELL BERKS  
RG12 8YT  
TEL: (0344) 862111



# NOTHING STANDS IN THE WAY OF OUR CYLINDERS.



**"Nothing stands in the way of our replacement cylinders.... sticks, stones, tin cans, glass bottles, golf tees, etc."**

A statement you have probably heard time and time again but never been able to believe, until **now**.

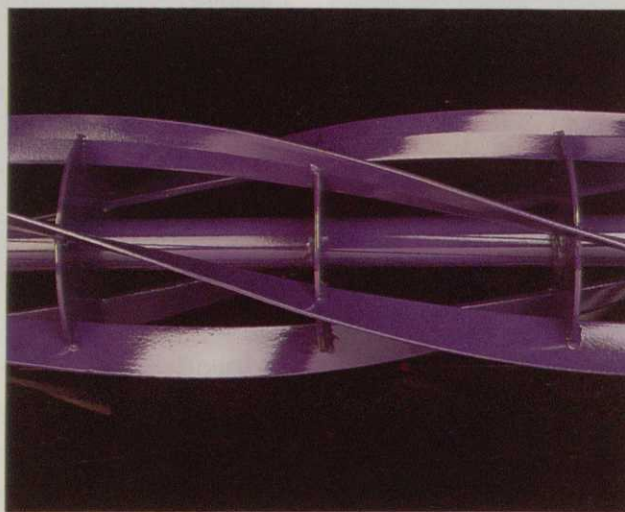
At Supreme Mowing we not only state this fact, but more importantly guarantee our replacement cylinders against breakage upon hitting a movable object.

The use of the finest British Steels and advanced

methods of production and heat treatment enable us to manufacture products that are renowned for their accuracy and reliability, therefore giving you a longer working life and a cleaner cut.

There is a cylinder to fit any make and size of mower, Ransomes... Toro... Jacobsen... Dennis... Shanks... Atco...

Nickerson... Agria... Hayter... Greens... National... Morrison... Sabo...



**S U P R E M E  
M O W I N G**

Wet Moor Lane, Wath-Upon-Deerne, Rotherham, S63 7LR. Tel: (0709) 873436 Fax: (0709) 878005

A Ransomes PLC Company



# Around the Green

Keeping in touch with news and comment from the regions

## NORTH SCOTLAND

Not much happening just now to report, either that or nobody is talking to me about it! Congratulations to the five lads from the North section who went to Dunbar for the BIGGA National Championships. They could make up only one team, so Gordon Moir elected himself non-playing captain (just as well, I hear) and the four proceeded to win the competition for our section. Well done Alick Mackay, Stephen Sullivan, Paul Murphy (he gets everywhere) and George Paterson. George merits extra praise for actually winning the individual prize (he was both low gross and low nett). George is enjoying a purple patch just now as he also retained the North Order of Merit, with fellow greenkeepers John Urquhart and Stevie Macintosh also finishing high up. Brian Fraser won his home club's 36 hole Open at Inverness – it's a pity he can't make our outings.....or is it? – and his 67 in the morning was a superb score. I'm told also that Gary Tough won the prestigious Edzell Club Championship Dalhousie Medal. With these and other greenkeepers performances people may wonder when the work gets done? The answer – get up very early if you want to see the green staff at work!

By the time this report reaches you the autumn/winter programmes will be up and run-

ning. I wish you all the best and if any of you have interesting jobs for this winter, please contact me and tell me about them.

Next month's report will carry a summary of our autumn jaunt to Kirriemuir (no balls or virgins, I'm afraid), which at the time of writing (August 31) has an entry of 80 – watch this space.

Three more new members to welcome: Barry Cueyne, Newtonmore GC, Alisdair Macleod, Stornaway GC, and Alan Kemp from Blair Atholl, who is a student at Elmwood College. All the best to Stuart Griffiths, who after working at Tain for the summer has gone to Elmwood College for a one year full-time course.

I'm glad to report that Colin Mackay now has a full-time post over at Cruden Bay and will be starting college this winter – well done, Colin.



IAIN MACLEOD

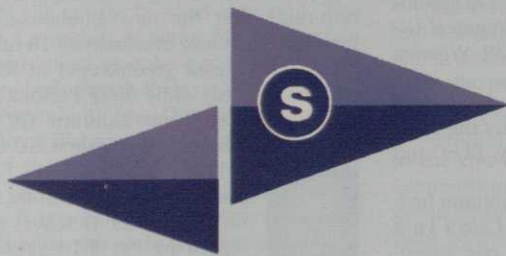
## SOUTH WALES

On Tuesday 5 August at Southerndown GC the annual Secretaries v Greenkeepers match took place, with fine weather and a cool breeze blowing from the sea. The result was a win for the greenkeepers by four games to three – 'and about time too' – for this was the greenkeepers first win in six years! Yes, the last time we won

was back in 1987 and that also was at Southerndown. The winning pairs were: Mike Norfolk/Alan Richards, Gary Johnston/Patrick Jones, Tyrone Garland/Robert Johnston/Chriss Thomas. Our thanks to Southerndown GC, its staff, caterers and committee, also to Fred Crossman (from the secretaries) for his splendid organisation.

Royal Porthcawl GC hosted this year's Birdie Cup competition held on 17 August. Again the weather was kind, warm and sunny, and the course was as testing as ever. Our thanks go to Birds of Cowbridge for sponsoring the day and to Dave Ward and his staff and to all at Royal Porthcawl. Results: Best Gross, Birdie Cup-Mike Jones. Runner Up-Gerwyn Price. Best Nett, John Duncan Cup- Andrew Jenkins. Runner Up-Ted Thompson. It was great to see Ted back in action after two years in the wilderness (and taking second place as well) – we'll have to watch him! The semi-finalists in the PRO TURF sponsored matchplay competition are Mike Jones, Laurence Walter, Robert Frater and Douge Donne. Results will follow.

Good luck to both Tyrone Garland and Laurence Walter of Wenvoe Castle GC. Tyrone has been nominated to represent South Wales in the ICI Premier Greenkeeper of the Year, whilst Laurence is the only section entry to ➔ 30



## STANDARD GOLF

### WE SET THE STANDARD FOR GOLF

Ask for our full colour Catalogue and Price List together with our comprehensive list of Driving Range Equipment including our UNIQUE and PATENTED Driving Range/Winter Tee Mat 1.5 x 1.5m. Prices as low as £125 per Mat for nine mats.

Contact Paula or Lisa at:  
Standard Golf (UK)  
Limited, The Maxwell Hart  
Building, 612 Reading Road,  
Winnersh, Wokingham,  
Berkshire RG11 5HF.  
Tel: 0734 788044  
Fax: 0734 785805



Our Professional Series Ball Washer is an improvement on the competition! Made from high grade space age plastic case and superior construction, its easy crank design and super ball cleaning action, it is able to wash up to four balls at a time. The Pro Washer can be mounted on our Tripod Ball Washer Stand, or attached to any 2-3/8" O.D. Post. Available at £112.82 each.

Colours available for the above: Yellow, Red, Brown, Avocado, Blue and White

## Turn your Toro or Jacobsen greens mower into the finest top dressing brushing system ever invented



Save time, while avoiding damage to your greens, by using our patented FLEXBRUSH™ to work on your course.

It handles top dressing chores perfectly.

FLEXBRUSH is actually a set of three brushes that quickly and easily attach to the cutting units of either a Jacobsen or Toro greens mower. On a light top dressing application and at transport speed, you can brush a green in less time that it takes to mow it.

Think of it as the right tool for the job. It won't compact your putting surfaces. And it's designed so the brushes get to the top dressing before the wheels.

FLEXBRUSH follows the contours and undulations of top dressed surfaces like no dragging method can.

Note: Do not use with turf groomers.

FLEXBRUSH for Jacobsen Greens King: £481.09

FLEXBRUSH for Toro Greensmaster: £484.00





29 → make the Hayter Challenge Tournament final. (see *Hayter results*, this issue – editor).  
PETER LACEY

## MIDLANDS

On 9 August the Midlands played their Autumn Tournament at Copt Heath GC. The players found the course to be in great condition and expressed thanks to Harold Lewis and his staff.

On his own course Paul Loffman played great golf over 27 holes and won the event with a nett score of 98.5, whilst Mike Hughes shot the lowest gross, winning with a score of 111. We thank Copt Heath for the welcome extended to us and for excellent catering. Thanks also to our many trade colleagues for again sponsoring the tournament and for fine support so freely given.

After this event we travelled south the following day to Dunstable Downs GC, for a match against the Mid Anglia section. After last year's result Mid Anglia sought revenge and with a score I won't reveal... they certainly got it! Our thanks to Mid Anglia for organising such a wonderful day: it was a fine game on a nicely presented course, followed by an excellent meal – and enjoyed by everyone. The Midlands section extend special thanks to Bob Pilsbury, who kindly sponsored the day.  
DEAN CLEAVER



## SCOTTISH REGION

Members of the old SIGGA, especially members of the West section, will be saddened to learn of the death in July of Joe Braid, for many years head greenkeeper at Cawder Golf Club. Joe, in fact, only ever worked at Cawder – from young boy to head greenkeeper – and could boast a career in greenkeeping that spanned over 46 years. Joe was a keen member of the Greenkeepers Association, being both committee member and eventually chairman of the West section. Our deepest sympathies are extended to May, his wife, at this sad time.

Whilst talking to another old member of the West section, Johnny Bulloch (who, incidentally, was a great friend of Joe Braid), Johnny mentioned the recent BIGGA National Tournament at Dunbar, saying that it took him back some 54 years, when on 29 August 1939 he won a trophy at the British Tournament held at Ayr Belleisle. Johnny, along with all the trophy winners that year, held his trophy longer than anyone else, certainly for at least five years. Maybe it had something to do with the fact that two days after the British Tournament was staged, World War II broke out!  
ELLIOTT SMALL



## SURREY

Here I am on holiday in sunny Suffolk, writing what should have been written last week, but delayed in the hope of news arriving at the eleventh hour from within the section. However, all seems quiet over this holiday period with no births, deaths, marriages or career moves to report. I am fortunate under these circumstances to report on a splendid afternoon of golf enjoyed by nearly fifty section members at Sunningdale GC in mid-August. The old course was an impressive sight, with heather in flower and greens firm and true – only the golf played could spoil the occasion! This certainly wasn't the case for Ian Sutcliffe, who tallied 36 Stableford points to gain victory and thus was fittingly presented with the McMillan Tankard by Jack himself. Dave Langheim pipped Ronnie Christie on a count-back for second place – both on 35.

# Around the Green



Following a superb spread of fare in the artisans clubhouse, our thanks were extended to Lawson Bingham and Robert Brewer, plus of course all the green staff at Sunningdale, for the fine condition of the course. In addition we acknowledged and thanked the Sunningdale Artisans Club for their hospitality, whilst not forgetting the caterers for a grand meal.

Please remember that the Autumn Tournament takes place at Epsom GC on Thursday 21 October – with closing date for entries being 7 October. The format is 27 holes Stableford, 7/8th stroke allowance. Please also note that a jacket and necktie must be worn in the clubhouse.

Following the success of last year's mini-bus trip to Harrogate for the BTME (run by the section in conjunction with Ian Kerry), we are considering a similar trip this coming January. Will members please contact a committee member if they are interested in this venture – thanks.  
ROGER TYDEMAN

## BUCKS, BERKS & OXON

Our thanks to Mark Barthelmie at Risboro Turf for organising the annual Jacobsen Tournament, held at Hazlemere G&CC on 4 August. Forty five greenkeepers from the area were invited, all of whom had the pleasure of playing a course in superb condition, thanks to Russell Lucas and his fine band of men. The event was Stableford off full handicap (max 18). RESULTS: 1st K Stevens Mentmore GC 44. 2nd S Edwards Whiteleaf GC 43. 3rd A Wells Chartridge Park GC 39. Wooden spoon John Witney 20.

Mark would like to thank all those that helped to make the day a success, particularly the trade – Jacobsen, Hardi, Iseki, Etesia, Saxon, BLEC and Lamborghini.

May I remind everybody that our Autumn Invitation Tournament is being held at Calcot Park GC on 11 October. The format is one greenkeeper and one guest invited from your golf club. If you have any queries, please contact me, though you should have already received the information by post.

The section will be running a mini-bus to BTME in January, so if you are interested in attending this important and informative function, please let me know ASAP so we can organise numbers.

After the go-karting we need more ideas for social events that you would like us to stage next year, also ideas for the '94 lecture programme. Write to me with your input or call me on 0628 829208.



Good luck to our chairman, Dave Childs, who is running the Dublin Marathon at the end of this month. We all hope to see him hobble forth at the AGM in December  
RAY CLARK

## EAST MIDLANDS

At the time of writing, the singles and pairs knock-out competitions are reaching a climax, despite my inability to remember where I have written down the results! Congratulations to Jamie Bedford and Adey Porter on already having reached the singles final. Double congratulations, in fact, to Adey, who will soon be taking

charge of the Crocketts Manor G&CC, a new development at Henley-in-Arden. Although technically out of our area, Adey will be staying with the East Midlands section.

I would like to give an early reminder for the 1993 Regional Seminar, which this year is to be held in the East Midlands. The venue is the Sketchley Grange Country House Hotel, situated at Burbage, Leicestershire, and it takes place on 24 November. In addition to the speakers, Hardi Sprayers have invited all those attending the seminar for coffee and a tour of their establishment – they are situated only a few hundred metres from the conference centre. Booking forms are available from Roger Willars. Tel: 0455 283053. It is hoped that section members will again support the event strongly.

This month we are, as ever, pleased to welcome new members: Mark Stanbrook of Springwater GC, Anthony Foulds of Manor GC., Uttoxeter, and David Sankey of The Leicestershire. With all The Leicestershire's staff now being members, Paddy McCarron could realise a long-standing ambition to manage a BIGGA five-a-side football team – if he could find anyone willing to play against Maurice Emery!  
TONY HOWORTH



## CLEVELAND

Roger Shaw, latterly course manager at Brancepeth Castle GC, has moved to a new course development at Romside Hotel, Carrville, Durham City.

George Malcolm, tells me the new course layout at Brass Castle is fully operational, six new holes having been built 'in-house' by George's own staff. Also at Brass Castle, Stuart Vickers is confirmed as first assistant – congratulations.

Brian Hall, head greenkeeper at the recently opened Hunley Hall GC at Brotton, East Cleveland, is busily turfing over large mounds (anti ram-raid) near the new clubhouse. The view from the clubhouse overlooks all 18 holes.

Ron Cole, head greenkeeper at Kirby Moor-side, has retired, while Steve Parsons has moved to Hunley Hall from Saltburn GC and Nick O'Grady has moved from Wilton GC to Saltburn GC.



The next meeting will be at Darlington GC on 21 October, a talk presented by Par 4 Irrigation Systems entitled 'Modern Control Systems'.  
BRUCE BURNELL

## SOUTH COAST

A new venture has been arranged for Wednesday 3 November – a golf game in the morning, followed by buffet lunch and an afternoon talk. East Dorset GC and British Seed Houses have kindly agreed to assist the section with this venture, a departure from our normal winter evening lecture, and I trust members will give the event their full support.

The date, let me remind you, is 3 November, with golf starting at 8.30 am. A buffet lunch will be available from 12.30 pm and the talk begins at 2.00 pm. Members wishing to take advantage of either golf, or lunch, must contact me on 0962 797288 (day) or 0962 733574 (evening) before 24 October, though no advance notice is required if you are coming only to listen to the lecture. East Dorset GC is situated at Hyde, Wareham, and the lecture will be given by Jonathan Franks.

Our other winter lectures are: • Tues. 7 Dec: Royal Winchester GC, 4.00 pm – AGM. • Wed. 12 Jan: Dorset College of Agric. 2.00 pm – Ed McCabe and Arthur King on 'Communications within a Golf Club'. • Wed. 2 Feb. Alresford GC, 4.00 pm. – Ken Barber, East Sussex





National GC. • Wed. 2 March.  
Alresford GC, 7.00 pm. – David  
Whitaker, Wisley GC.  
BOB DENNIS

### EAST OF ENGLAND

Kenwick Park GC, Louth, was the venue for the Rigby Taylor Trophy and our thanks are extended to head greenkeeper Ian Morton and his staff for the super conditions we enjoyed at this new course. Thanks also to Brain Booth and Stuart Jeffs, representing our sponsors, who presented some great prizes.

RESULTS: 1st Dave Hornsey 33 pts, 2nd Josh White 30 pts, 3rd Graeme MacDonald 27 pts, 4th Ian Morton 26 pts, 5th Mike Finney 26 pts.

It is hoped to organise a trip to Hardi Sprayers, Hinkley, Leicester, the proposed date being 18 November. Section members should now have received information regarding this trip, but if for some reason you've been missed – please contact me.

Finally, if you have any news, views, opinions or problems – get in touch.  
MIKE FINNEY

### NORTH WEST

It is with regret that I report sad news. Graham Teasdale, head greenkeeper at Swinton Park GC, has died after a long illness. Graham moved to Swinton Park from Dean Wood GC two years ago, though unfortunately he only enjoyed about one year of good health after his move. Our thoughts at this sad time are with his wife and two daughters.

Mike Goodhind, the head greenkeeper at Cavendish GC Buxton, is on the move and is going over the 'Big Hill' to take responsibility for managing the course at Tytherington GC. Mike has been at Cavendish for nine years and tells me they are a great club to work for. I'm sure that Cavendish will be sorry to lose him as he always kept the course in good condition. The vacancy at Cavendish is being filled by Julien Snape, latterly head greenkeeper at Marple GC. Good luck to both men in their new posts.

Talking recently to Tom O'Brien, head greenkeeper at Royal Birkdale, he tells me that re-construction of the remaining 13 greens starts in September (five have already been completed). I am sure he is now hoping for summer (the one we missed!) while this work is undertaken.

Now, how about some support for North West section events? A team of 16 was required to play a match against the Northern section, the event kindly sponsored by Patissons, who picked up the tab. After mentioning this event in section notes and still failing to get sufficient volunteers, I spent a small fortune in 'phone calls attempting to gather a team of 16, which eventually I managed, though unfortunately, despite promises of attendance, only 13 members turned up! The result (obviously) was a win for the Northern section, although I understand it was a close match and thoroughly enjoyed by all. Similarly, a visit to GEM was organised for 25 August and this was publicised in the section notes on two occasions. Three days before the event I had the embarrassing task of ringing Andy Hardy, who had made arrangements for catering etc, cancelling the trip. Only three members (plus me) applied to go! I know there can be problems with getting time off, but with nearly 500 members in the North West section I would expect better support.

On a better note, the Autumn Tournament at Mere G&CC on Thursday 21 October will begin with soup and sandwiches at noon, the 18 hole medal round teeing off at 1.00pm, followed by an evening meal and presentation. All applications to Paul Pearse, 1 Swan Close, Poynton,

# Around the Green



Stockport. SH12 LHX. Please include your deposit of £10. Latest date for entries 18 October. Any complaints, news or enquiries, please call me on 051 724 5412.  
BERT CROSS

### SOUTH WEST

August is the holiday month and I'm on mine – currently enjoying some rare sunshine in the Lyme Regis area of East Devon. The weatherman has just appeared on the TV screen, he smiles confidently, but half way through his forecast we realise that he is cunningly standing directly in front of a large area of low pressure and the smile is looking more apologetic by the minute. As he finishes – is that a bead of perspiration on his brow? – the kids start squabbling, the wife bad-temperedly packs away the beach gear and starts thumbing through country house brochures. I can hardly wait. Still, we did manage a game of golf last week. I played a reasonable shot to the first green and affluently marked the ball with a pound coin. My elder son looked horrified as I carried my bag to the edge of the green and bellowed "Dad, you're not going to leave that pound there, are you?"

May I take this opportunity to welcome the dozen or so new members who have taken advantage of the half-year discount and recently joined the section. Entry forms for the autumn – winter programme will be in the post soon, and there should be something for everyone: golf events; lectures; a visit to the Ransomes factory, and training days. I hope you will all feel able to join in as active section members.

Finally, as this won't appear until October, I'll wish everyone the best of luck during the period of autumn maintenance. I'm probably preaching to the converted when I say 'keep the lines of communication open'. A little consultation can go an awful long way toward smoothing over some of the potential problems this trying time can bring. I remember being stopped by a member of my last club, half way through a green with the Ryan Greens Aire, only to be asked "why, when this green is so good, do you have to wreck it by doing that?" He was one of many who genuinely did not appreciate that the greens would not stay in top class condition for very long if basic maintenance was neglected. A brief explanation on the notice board in the 'Captain's Newsletter' helped a lot in this respect. Happy hollow coring!  
PAUL WORSTER

### NORTHERN

I am pleased to report that there were no problems in raising a team this year to play in the 'Battle of the Roses'. Only two members were unable to accept the invitation, as they were playing in the National at Dunbar. I am also pleased to report that the Northern Team looked splendid in their beautiful white sweaters, given to each player (see photo). Do you recognize the member without a white sweater? It is our chairman, Phillip Taylor, who was not playing golf. I must thank those who accepted the invitation to play for Yorkshire versus Lancashire and I am delighted also to inform of our team's success, winning back the Shield from Bert Cross and his

team. It was four years since Lancashire last won, in 1992, so lets hope it's at least another four years before they win again! Well done the North, represented by Messrs Midgley, Lealman, Storey, Jarvis, Smith, Collins, Kirkbright, Gamble, Gee, Johnson, Waite, Spencer, Linley, Oxley, Potter and Mennell. I must thank Fulford Golf Club for extending the courtesy of their course to us, also our colleague Mark Mennell and his team for preparing the course. Everyone who played was complimentary about the conditions and thoroughly enjoyed the day. Further thanks must go to Peter Marshall and his employer, Patisson's, for their continued sponsorship of the above event and support for our association.

Invitation Day was held at Pannal GC on 17 August, a great success, with the sun shining (as it did last year) all day. Everyone attending enjoyed the event, which again was sponsored by Yorkshire Mowers. Our thanks to John Price and Tony Dodson for making all the arrangements and getting the prizes in place. Incidentally, in conversation with John Price it came to light that since his involvement with the sponsorship (over five years), it has always been sunny – all I can say is, long may you continue sponsoring this event. I must thank our colleague Allan Gamble and his team for preparing an excellent course, also Pannal GC for making us welcome and extending courtesy of the course to us.

The Results:- 1st M. GUY – C. THOMPSON 62, 2nd J. WAITE – D. HARTIGAN 69, 3rd R. SMITH – J. SAMUEL 70, 4th R. GEE – F. MALLINSON 70, 5th K. CHRISTIE – R. BELL 70, 6th G. HOPE – R. ELLIS 70, 7th M. HANNAN – M. BAXTER 71, 8th R. EMSLEY – J. NEWTON 71.

Last month I had nothing to report, but this month has certainly made up for it. First of all, congratulations to Mr & Mrs John Waite, who are expecting their first baby after five years of marriage. Johns current handicap is 16 and I wonder if it will go higher or lower after the event? Best of luck to you both. I've also heard that Bob Raistrick, head greenkeeper at Queensbury GC, is retiring and that Martin Shaw is taking over. I wish you both good fortune and may all your problems be little ones. I also learned that Ron Gaul at Kirkbymoorside GC retired recently. I wish him a long and happy retirement.

Some news of 'the trade': Graham Walker (GEM) has been promoted (he's been given a new car) and the new GEM rep is Alan Dyson. Congratulations to you both. Whilst writing about GEM, I am in the process of organising a trip to Gem's plant in the winter, details later. Glen Hardcastle, who many will know from his days at Trident, has now parked his car and returned to greenkeeping, taking the post of course manager at Leeds Golf Centre, Wike Ridge GC. I wish these folk all the best and look forward to meeting them during our winter lecture series.

Finally, I am pleased to welcome the following new members: Barrie Darsley, Grimsby GC, Alistair Cobbett, Mid York GC, Christopher Berry, Allerthorpe Park GC, and Alan Speight, Michael Stockhill, Richard Revell and Wayne Briggs, all of Redhall Services, Redhall Estate. If any new member requires any information please call me on 0274 568128  
PAT MURPHY



Northern Golf Team



JUST MOVED!

# MULTI-CORE

The superb TMI 500 Greens/Fairway Aerator



- 1.5 metre coring width
- Variable spacing with a choice of tine sizes. Hollow or solid tine.
- Productivity. 67,000 square feet per hour at 2.6MPH.
- Adjustable depth. Depth capacity to 5 inches.
- Durability. Rubust all steel welded frame
- No grease points. Fully sealed throughout.
- Fits your tractor. From 22HP gearbox or hydrostatic.

Aerators Ltd, 3 Hillside Close, Euxton, Chorley, Lancs PR7 6JB.  
 Tel: (0257) 231861  
 Fax: (0257) 231861  
 For Ireland please contact: Redlough Landscape Equipment, Belgree, Mulhuddart, Dublin 15. Tel: 8207033/34

AD REF 347

Take a leaf out of our book...



# TRILO Vacuum Sweepers



For hire or sales contact:

## MJT Contracts Ltd

50 Bury Road, Stapleford, Cambridge CB2 5BP  
Tel: (0223) 846648

AD REF 382

# GOLF MATS UK

## SOLE SUPPLIERS OF THE DUNLOP WINTER TEE & PRACTICE MAT



The Dunlop winter tee mat has established itself as the most preferred mat available on the market. With its stylish looks and turf-like feel it is a pleasure to play off.

This system enables us to provide:

- Price budgeting from £175.00-£300.00
- A choice of quality playing surfaces
- Can be portable, fixed or with adjustable legs
- All grass pieces are replaceable at minimal cost
- Detachable handles enable easy portability for two persons

We can demonstrate the mat at your club at your convenience.

Please contact our office to make an appointment.

PO Box 145, Southport, Merseyside PR8 6QU  
Tel: (0704) 541055 • Fax (0704) 536594

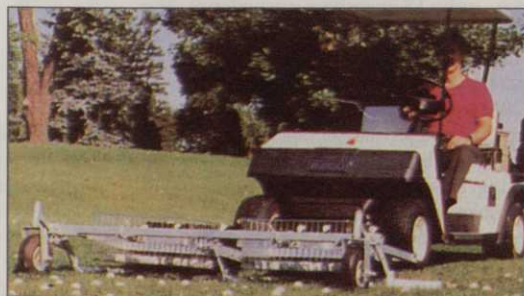
AD REF 426

## THE ANSWER TO YOUR SUMMER AERATION PROBLEMS



The RTS "Sarel Type" Roller  
A pedestrian model is also available

## THE ANSWER TO YOUR GOLF BALL COLLECTING PROBLEMS



The Acrow Ballpicker  
A pedestrian model is also available



### RISBORO' TURF

CHINNOR ROAD, BLEDLOW, PRINCES RISBOROUGH  
AYLESBURY, BUCKS, HP17 9PH  
TEL: PRINCES RISBOROUGH (0844) 274127 FAX: (0844) 274191

Contact us for the name of your nearest dealer or a demo

AD REF 386





For grass banks, the 'big blow' works wonders

# THE BIG BLOW

One of the most enduring problems greenkeepers must face is the constant maintenance associated with sand bunkers. Edging is difficult enough, but of on-going concern is the continual build-up of sand on the greenside edge of bunkers caused by explosion shots. These massive amounts of sand can kill the turf by mere suffocation or by accumulating to such depths that severe drought conditions develop. It's a vicious cycle.

Many have tried various methods of removing sand from

the grass faces of bunkers. Larry Gilhuly has shown you one technique (*in a previous article - editor*) using water to wash away the accumulated sand on a steep sand bank. It's a good one and it works. Mike Rewinski, superintendent at Westhampton Country Club on eastern Long Island, has found another innovative approach worthy of our attention.

While blowing out his irrigation system to prepare for winter, Mike found a large rented air compressor ideal for blowing sand from grass → 34

## BLAST THE LEAVES

Without doubt the most efficient and cost effective way to keep Autumn's bounty at bay is by employing a BILLY GOAT blower. Especially designed to move leaves and litter from awkward places under perfect control. One man with our blower can do the work of five with rakes, brooms and shovels. The perfect partner to the truck loader.

**BOB ANDREWS LTD**

1 BILTON IND. ESTATE,  
BRACKNELL BERKS  
RG12 8YT  
TEL: (0344) 862111

**BUT DON'T TAKE OUR WORD FOR IT,**

ask for a "no-obligation" demonstration; in the car-park, on the tees or even on the putting surface. Billygoat sweeps clean where the others leave off (or can't get the leaves off). GI12

AD  
REF  
381

## BUY DIRECT

Why pay the middle man? Buy direct from our quarries at competitive prices. Nationwide deliveries. All mixes to your specification. For prices, samples and analysis please contact:

**JEAN at WHITE MOSS SAND QUARRY (Cheshire) on 0270 884288**  
Root Zone • Top Dressing • Sand • Soil (Screened) • Peat (Screened and As Dug)

**JULIE or JENNY at BETLEY ASH & AGGREGATES on 0270 820426**  
Ash (Black and Red) • Drainage Media • Ash based Soil • Granular Fill

Our products are currently being supplied to major golf courses and construction projects nationwide.

**ALL MATERIALS FROM OUR OWN QUARRIES**

AD  
REF  
417



# THE BIG BLOW



Before and after - and the difference is amazing

33 → bunker banks back into the bunkers. He outfitted the compressor with a hose attached to four feet of 1/2-inch pipe. One person can easily blow the sand back into a bunker usually in 15 to 20 minutes. Some dried grass clippings will settle in the sand but are easily cleaned up with leaf rakes.

The nett result of this action is a neat, clean turf that can thrive

very well and extend the life of the reconstructed grass banks indefinitely. Banks of little-used bunkers should be cleaned once a year. More heavily used bunkers should be subjected to the Big Blow as often as twice a year.

● This article first appeared in the USGA Green Section Record and is reproduced here with due acknowledgement and thanks to the USGA Green Section and author Gary Watschke.

**AIRIENA**  
**GUR**

A simple, non toxic and ready to use line marking system complete with stencil for marking out G.U.R. areas.

When it comes to G.U.R. marking ...

*turn to the experts*

**Supaturf**

SUPATURF PRODUCTS LTD  
AMENITY HOUSE · 2 MAIZEFIELD · HINCKLEY FIELDS INDUSTRIAL ESTATE  
HINCKLEY · LEICESTERSHIRE LE10 1YF FOR FURTHER DETAILS  
Tel: (0455) 234677 or Fax: (0455) 234714

AD  
REF  
164

# Leaf Sweeper

Demonstrations available through local dealers



Simple well proven design, easy to use, excellent value for money - 4 rows of hard wearing polypropylene bristles lift leaves, grass clippings and litter effortlessly into high-capacity hopper.

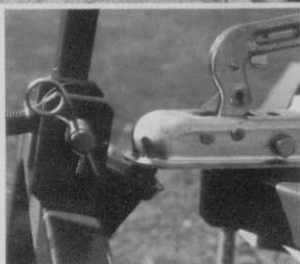
Fully floating linkage enables brush to sweep cleanly on undulating golf course fairways.

Simple manual trip facility for easy dumping of debris.

Optional scarifying rotor and gulley brush attachments available.

# WESSEX

Send for details - no stamp required  
WESSEX FARM MACHINERY SALES CO.  
FREEPOST BZ221  
BORDON • HANTS • GU35 9HH  
0420 478111



Universal joint detail



Brush detail

AD  
REF  
210



The emergency first aid course, our first training course in 1993, was staged on August 20 and was a great success. We thank the staff of St. John Ambulance Brigade for the valuable information so expertly given. A better response for such training events is, I believe, required of section members in order that their education may be further improved and to also comply with current legislation. Remember, you are never too old to learn!

The regional seminar is at Hadlow College this month, so do try to attend. The winter seminar will be on 2 December at Oaklands College and the cost for the day is £8.50, including lunch. Please come along and invite your secretary or chairman to attend also. You will, I am sure, gain considerable benefit from listening to the excellent speakers, all of whom will speak on subjects that are of importance to our industry.

The Turkey Trot will be held at Hadley Wood GC on November 11 commencing at 11.00 am. Entry forms will be sent to you for this last golf event of the year and members should note that the AGM will follow the meal. Nominations or propositions for the agenda are required (in writing) and should arrive 14 days prior to the meeting. Please forward such details to our secretary: Barry Moggridge, Flat 3, Hadley Wood GC, Beech Hill, Barnet, Herts. EN4 0JJ.



TONY DUNSTAN

### EAST ANGLIA

I've always said that greenkeepers would end up in Happy Valley....well our lot ended up in Fynn Valley, which is pretty close. Being there, it was hard to believe that two years ago we would have been walking in a cornfield. Praise was given to 'Toddy' for the layout and condition of the course, this coming in particular from the owner, Mr Tony Tirrell, who was there to welcome us. Praise must also go to Mick Offord, the head greenkeeper, for presenting the course in such excellent condition.

The results: (0-18) 1st Peter Howard 38 pts, 2nd Sam Sylvester 37pts, 3rd Richard Pride 36 pts, (19-28) 1st Steve Davison 40 pts, 2nd Kevin Bunn 39 pts, 3rd Steve Millard 38 pts Guest prize: Cyril Fuller 42 pts. Prizes were donated by CWM, Toro, CWM, Does, CMW, Hayter, CMW, Rushbrooks, CMW, and Parker Hart. That should make up for all the times I've left CMW off the list in the past - sorry Mike! Our thanks once again to all at Happy - sorry - Fynn Valley!

Our second report is from Sam, reporting from Thorndon Park (as I was again on holiday). An excellent day was enjoyed by a band of 32 players. Weather good, hospitality superb (they're a good lot, those Essex boys). The course was in super 'nick' and Sam reports 'the greens were too fast', though he wasn't complaining and, of course, was in amongst the prizes again.

The results: (0-17) First and winner of the Vic-tor Autumn Cup, Andy Sheehan (on countback) 34 pts, 2nd, Sam Sylvester 34 pts ( I bet he was sick, nevertheless well done Sam), 3rd Richard Pride 33 pts. (18-28) 1st Toddy Huddleston 32 pts, 2nd Glen Rayfield 30 pts, 3rd Gerry Steggalls, 29 pts, Guest - Eddie Cottage 34 pts. Nearest the pin sponsors were: 2nd Parker Hart, won by Mike Peters. 5th Parker Hart won by Andy Sheehan (under four feet and he missed the putt!). 12th Rigby Taylor won by Frank Daniels, 15th Parker Hart won by Jim Timms. The longest drive, sponsored by Rigby Taylor, was won by Roland Hughes. Other trade prizes from CMW, Synchemicals, Rhone Poulenc, SISIS, Does, ICI, Sta-Brite and CMW.

Our next meeting is at Yarmouth & Caister on 6 October, See you there.

MICK LATHROPE



# Around the Green



### DEVON & CORNWALL

Five candidates competed for the honour of representing Devon and Cornwall in the forthcoming ICI Premier Greenkeeper of the Year award. In scoring, the section committee decided to use the Master Greenkeeper assessment paper to mark each of the five courses, and these were visited by Jeff Mills and Steve Redman.

Only half a point separated first and second place and our congratulations go to Lauchlan Miller, head greenkeeper at Dawlish Warren GC, who went forward to represent the section in the regional final, selected subsequently to represent the region in the ICI Premier Greenkeeper of the Year finals, to be held on Dec. 6-7 at Aldwark Manor. I am sure Laughlan will be an excellent representative for our region and we wish him good luck in the final.

Our AGM will be held at Torquay GC on Wednesday November 17 and, as usual, this day will commence with golfing members competing for the Toro Trophy, with prizes kindly donated by DGM and Lely. The section's AGM will follow lunch, and this year we will be seeking three new committee members as our current serving chairman (Bill Pile), vice-chairman (Brian Summers), and president (Don Hunt) will not seek re-election. On behalf of all section members I would like to thank these gentlemen for all their hard work, put in over many years. The section will require one member from Cornwall, one from Devon, and one from



RICHARD WHYMAN

### NORTH EAST

On 20 July we held our annual match against the North East secretaries at Foxton Hall GC, the result being a halved match at three all, thus giving the greenkeepers retention of the salver! Our thanks to the committee for granting us courtesy of the course, and to the head greenkeeper and his staff for excellent playing conditions. A personal observation, I hope the Foxton hall secretary takes heed next time he sees swallows swooping low on the fairways, for this action means it is going to rain, not what he thought!

Well, there are quite a lot of people on the move in the section, starting with me. I've moved to a new 18 hole development at Matfen Hall and can be con-

tacted on 0661 886084. Needless to say, any member who wished to visit Matfen Hall will be most welcome. Congratulations to Clive Patterson, formerly of Arcot Hall, who has returned to the Isle of Man, also to David Jennings, formerly of Newbiggin, who is now first assistant at Morpeth. Finally, I believe Glen Barter, latterly of South Shields, has taken the job of head greenkeeper at Seahouses - best of luck to you, lads. May I also congratulate Caroline Malone, who worked at Alnwick in the past, on joining the greenkeeping ranks once again. Caroline, I wish you well in the future.

The match against Cleveland will probably take place this month (October) - details to be advised. Finally, congratulations to Tony McLure (Whickham) on representing his country in the two-man team event staged in August, England v France.



JIMMY RICHARDSON

### EAST SCOTLAND

Dunbar Golf Club was, as you all know, the venue for the BIGGA/ICI National Tournament, played on a course presented to the highest order in true Scottish links fashion. Our grateful thanks go to the captain & committee of Dunbar GC, and in particular to Graham Wood and his staff for wonderful playing conditions. A great number of people left with fond memories, for believe it or not, Dunbar is the driest part of the country and boasts the highest sunshine record in Scotland. This was certainly the case during the championship, with the wind cutting the grass and continually drying the course. Many of Graham's staff worked through the night, watering the greens constantly, though this all came to no avail when the winds rose at dawn, drying them out again. As Graham said: "That's sods law."

The tournament certainly was well run, → 46




## MANUFACTURERS & SUPPLIERS OF GOLF COURSE AND DRIVING RANGE EQUIPMENT.

### RANGE EQUIPMENT INCLUDES:

Play Off Mats from £147.00  
Ball Dispensers from £2680.00  
Ball Collectors from £1865.00  
Distance Discs from £44.00  
(with posts!)

### AND OUR GOLF COURSE ACCESSORIES:

Tee Markers from £2.40  
Putting Green Markers from £2.80  
(New fibreglass model)  
Flag Pins 6ft white from £4.30  
New material flags from £1.35  
Boot & Shoe Cleaner Electric model from £465.00

The best does not have to cost the most!

## PATTISSON & CO LTD

342 Selbourne Road, Luton, Beds LU4 8NU  
Tel: 0582 597262 Fax: 0582 505241

**SPECIAL OFFERS ON CERTAIN PRODUCT LINES**  
Please phone for more details



# Outstanding performance all year round



## Rovral gives fast, effective and reliable control of turf disease

ROVRAL GREEN and CDA ROVRAL take effect immediately upon application by a unique contact action which both controls and prevents six major turf diseases\*.


Because the contact action of ROVRAL is unaffected by weather conditions and slow grass growth, you can confidently use ROVRAL GREEN and CDA ROVRAL all the year round. They are particularly effective in the colder winter months, or during summer drought, periods when systemics do not work well.

With no water to add and no mixing, CDA ROVRAL gives you the performance of ROVRAL in a sealed system that is quick and easy to use.



\*ROVRAL GREEN & CDA ROVRAL can control and prevent:

- |                |                 |
|----------------|-----------------|
| Fusarium Patch | Leaf Spot       |
| Dollar Spot    | Brown Patch     |
| Red Thread     | Grey Snow Mould |

 **RHÔNE-POULENC**

Rhône-Poulenc Environmental Products, Fyfield Road, Ongar, Essex, CM5 0HW. Tel: 0277 301301 Fax: 0277 301119

**ROVRAL GREEN AND CDA ROVRAL CONTAIN IPRADIONE  
READ THE LABEL BEFORE YOU BUY : USE PESTICIDES SAFELY**



# The Last Word

Send your letters to The Editor, Greenkeeper International, 13 Firle Close, Seaford, East Sussex BN25 2HL

## Efficient team

I am most grateful for the help which we received from BIGGA members during the course of the most recent Open Championship. They did, as I am sure you know, provide a most efficient team of bunker rakers and their efforts were very much appreciated. They did, too, tend to stand out from the crowd with their lilac shirts, which I am assuming is now the official BIGGA colour!

I would be most grateful if you would convey our thanks to those of your members who were involved.

**G E Watts, Secretary, Royal St George's Golf Club, Sandwich, Kent**  
(letter sent to John Millen, who forwarded it for publication — editor)

## Excellent video

May I congratulate BIGGA on producing an excellent and most professional video — 'SETTING THE STANDARD IN SPRAY APPLICATION'. Not only will this prove to be a great asset in helping with the education of young trainee greenkeepers, but to some of the older generation also — those who came into greenkeeping later in life and who find it difficult to get time off (from some clubs) to attend college and lectures. I hope this video will be the first of many educational training films.

**Martin Forrester, Course Manager, Stapleford Abbots GC, Essex**

## The hole facts

I write in response to Mr S Antolik's letter in last month's Greenkeeper International.

H Pattison & Co came under new management on July 5 1993 and I became the new managing director. Since taking over the company we have embarked on new strategies, better production methods and new quality checks. Obviously it is difficult to achieve this overnight. On Aug 11 1993 a letter was received from Mr Antolik pointing out that he was in possession of one of our hole cups measuring 111mm in diameter, contrary to the R&A rules of golf. We promptly replied to Mr Antolik, thanking him for bringing this to our attention, and took immediate action by making contact with our manufacturer.

After a short investigation we found a small batch of hole cups to have a diameter change from 107mm to 111mm, this a direct result of the compound of nylon utilised and a change in the coolant cycle, not the original tool that has been made that actually manufactures the hole cup. Our original patented drawings for the hole cup clearly show the diameter should be 108mm.

The problem has now been resolved and a new quality control procedure put into place to ensure that all hole cups meet the required 108mm as set down by the R&A. The small batch with the size differential problem have been sourced and returned to the manufacturer. I have also been assured by the Rules Committee that

the hole cups used at The Open, supplied by Pattison, measured 108mm.

I am pleased also to announce that our new quality controls are all part of procedures as the company embarks on BS5750. May I also point out that Mr Antolik is and has been a valued customer of Pattison since the early seventies.

**M Hinch, Managing Director, Pattison & Co Ltd, Luton, Bedfordshire**

## More on mowrah

Re Jon Allbutt's letter (August) asking for information from 'mature' greenkeepers regarding the use of mowrah meal, although a mere 'young upstart' of 23, I believe I have something of interest.

The following was taken from 'GOLF COURSES, DESIGN, CONSTRUCTION, AND UPKEEP' Published in 1933: "Mowrah meal was recommended to be used at the rate of half a pound to one pound per square yard. After the powder has been spread it should be thoroughly watered in, even if rain is falling at the time. It is useless to apply mowrah meal when worms have been driven below either by frost or a prolonged period of dry weather. Nor is it advisable to use it while the grass is in a young and tender stage of growth.

Mowrah meal also possesses some slight fertilising value. This product is the residue from an Indian Bean, known as *Bassia latifolia*, after it has been crushed for the extraction of oil. There are many grades of mowrah meal according to the degree to which the residue is ground. Coarse grades are of small value for killing worms, and although samples of such grades are offered at cheap rates it is uneconomical to purchase them as they may only be 50% effective. Mowrah meal can also be used to eradicate small grubs that feed upon grass roots, the most common of these being Bibio."

It would appear therefore that mowrah meal was only a by-product from the mahua tree after mahua-butter was produced from its seeds. If the butter is no longer produced commercially this may explain why mowrah meal is no longer available. As we are now talking of an organic-based worm deterrent could this also explain why the Pesticides Safety Directorate were unable to help with information. Perhaps some investigation into those industries connected with the mahua tree would be more rewarding.

**Jon Cole, Church Lane, Eaton Bray, Bedfordshire**

*Jon is not alone in researching mowrah, as Roger Tydeman's letter and extract (below) reveals. Further, readers may care to look back at 'How to make the worms turn' (March '93), The illustrations used are identical to those in the Carter's catalogue mentioned — editor.*

## 1930s approach

During recent building work in our clubhouse, several books from the thirties were found, including Carter's 'Practical Greenkeeper' for 1936 and Sutton's Golf Course Catalogue for 1939. The information contained in the latter may be of interest to Jon

(and others) regarding mowrah meal.

As you can imagine, the books are of considerable interest to historians, featuring photographs of many well known courses (of the period) under construction.

**Roger Tydeman, Croham Hurst Golf Club, South Croydon, Surrey**

● *Extract from Sutton's catalogue:* 'Earthworms are present in almost every class of soil, with the possible exception of some of the dry peaty types. Their food consists mainly of decaying vegetable substances, but they also consume decomposing animal matter. Various kinds of leaves, grass stalks, and even twigs are drawn into their burrows to decay and provide food, but living plants are not attacked. When feeding, and also when burrowing, earthworms consume considerable quantities of soil. During the passage of the soil through the body of the worm the digestible matter is extracted, the indigestible residue being discharged when the creature visits the surface, thus forming the familiar worm casts. Even small stones and other solids are passed through the bodies of worms and brought to the surface.

The activities of earthworms are largely affected by weather conditions, and during dry or very cold spells they will descend to a great depth. Although regarded as terrestrial creatures, they are, to a certain extent, semi-aquatic. Moisture is essential to their existence and they are conspicuously active during wet weather, especially when the temperature is not very low. Being nocturnal in habit, worms are not often seen on the surface by day.

Breeding takes place chiefly during June and July, although some authorities state that it occurs in spring and autumn. The eggs (from one to three) are contained in a capsule or cocoon and are hatched in from two to three weeks.

While it is admitted that the operations of earthworms are in some respects beneficial to the soil, the presence of these creatures in golf and other sports turf can only be considered as a nuisance. Not only do the casts they create make the surface muddy and uneven, to the great annoyance of players, but they also provide a ready medium for the germination of weed seeds. Furthermore, weed seeds are brought to the surface by worms. It is sometimes noticeable that worms are especially troublesome on areas which have been limed, and it is also found that the worm population is greater in turf mown without the use of the grass box than where the cuttings are collected.

On some golf courses it is regarded as part of the regular routine to destroy worms in putting greens, and an increasing number of clubs now treat their fairways also, generally by means of mechanical pumping machines designed for applying the destructive agencies. To keep the fairways clear is sound policy, for players have a preference for such courses, particularly in the winter months. For many years we have been in close touch with various methods of destroying earthworms, e.g., by the use of Mowrah Meal, Lead Arsenate,

Copper Sulphate, Permanganate of Potash, Lime Water etc. There is little doubt that on courses where the water supply is restricted a convenient method of disposing of worms is by the use of Lead Arsenate. It must be borne in mind, however, that this is a scheduled poison and that a Poison Book Entry Form must be signed at the time of ordering. Although we have received reports from some golf clubs that rabbits had been found dead following the use of Lead Arsenate, no case of poisoning of human beings has yet come to our notice.

MOWRAH MEAL is the crushed residue of a species of Indian Bean known as *Bassia*. Not only is the product very efficacious in killing earthworms, which are brought to the surface, BUT IT IS OF AN ORGANIC NATURE AND POSSESSES FERTILISING PROPERTIES. Further, it is non-poisonous and easy to use.

*An interesting fact. In the 1936 price list which Roger enclosed, the price of 'Carter's tested worm killer' (i.e. Mowrah meal) was quoted at £12 per ton, less than in the 1924 Carter list I have in my library, where the price quoted was £15 per ton. How many companies, I wonder, are today able to boast substantial price decreases? — editor.*

## Picture this

I must have been in one of my bolshie moods when I read the July issue, for I took exception to no less than three pictures within! Page 22: Why not a full group picture of the greenkeeping staff, instead of Japanese golfers? Surely the locals deserve better recognition. Page 19: The redesigned bunker at Sandwich is an eyesore, and the most un-natural man-made obstacle I've ever seen on a golf course. It's not the contractors fault, but the club's, and I trust they have considered the implications of 'accidents at work' by greenkeeping staff when trying to maintain it, or possible claims by golfers injured in an attempt to scale this height. Did you see Mike Harwood clambering about in there during The Open? He was lucky, someone was on hand to rake it afterwards, though ordinary golfers will take so long in restoring it that people waiting on the tee will need great powers of patience — I'd like to hear the greenkeepers reaction to this 'improvement'.

Page 19, lower: Presumably neither Rhone-Poulenc nor their advertising agency are familiar with the complexities of cricket score-boards, this one shows the score at 142 for 4, the last wicket having fallen at 122. So, twenty runs have been added since the fall of the last wicket, but one batsman has 23 runs to his credit, and the other one 48! Therefore the minimum score must be 122 + 23 = 145. There's one exception to this scenario. For a year's supply of Supertox I'll be happy to tell Rhone-Poulenc what it is!

Well, that's off my chest; you can't say that Greenkeeper International isn't perused in this household. Keep up the good work. Your July cover picture is delightful with such natural bunkers, looking an acceptable part of the golfing scene.

**Peter Bown, Winterbourne Houghton, Blandford Forum, Dorset**



# Buyers' Guide

The most cost-effective way of reaching readers of Greenkeeper International. Simply ring Bill Lynch on 091 413 7218, Carol Dutton on 0207 570117 or Louise Lunn on 0347 838581 and ask about an alphabetical category listing: the cost starts from the equivalent of under £25 per month.

## Aeration

### AERATION & DRAINAGE SERVICES



For Hire: Hydroject, Verti-Drains and Turf Conditioners, etc.

Contact: Paul or Lesley Wright, Aeration & Drainage Services, 48 Brightland Road, Eastbourne, East Sussex BN20 8BE  
Tel: (0323) 411860  
Mobile: (0860) 838241  
Fax: (0323) 411980

### THE EASY WAY HIRE EQUIPMENT FOR YOUR COMPACTION PROBLEMS

Moore Uni-Drill Overseeder  
Toro Hydroject • Toro Fairway Aerator  
Cushman Core Harvester  
Trilo Vacuum Sweeper Scarifier  
Toro Greens Corer with pulveriser  
Shelton SuperTrencher sand slitting  
Fairway scarification with Vacuuming  
1.5Mtr Greens & 2.5Mtr Fairway Verti Drains

D&E Turf Maintenance Ltd  
Tel/Fax: 0388 608620  
Mobile: 0836 376944  
Evenings: 0388 772844

## Aerators

### AERATORS

Problems with dirty water or algae bloom? Let Otterbine clean-up your lakes and ponds.

The world leader in water quality management.

Available from leading irrigation companies. Full details from:

### Golf Course Services

6 Stuart Road,  
Market Harborough LE16 9PQ  
Tel: 0858 463153 ♦ Fax: 0858 410085

## All Weather Walkways

### ALL WEATHER WALKWAYS

Limit turf damage with a natural woodfibre walkway.

- Free draining
- Soft and quiet tread
- Engineered particle size
- Blends into the landscape
- Expert construction advice

### Dormit

For further information please call us on Cirencester (0285) 860781/2

## Animal Repellents

### FAIRWAYS DISCREET CONTROL

CONSULTANCY ENVIRONMENTAL SERVICE & TRAINING

Rabbits & Moles...  
Our problem!

SPRINGER HOUSE • WINDMILL LANE  
KEMBLE • CIRENCESTER GLOS • GL7 6AN

TEL: 0285 770919  
FAX: 0285 770910

## YOU'RE ONTO A WINNER WITH GREENKEEPER INTERNATIONAL

Find three tiny £50 notes - win a real one, for free!

HERE WE GO with another chance to WIN £50 with Greenkeeper International!

All you have to do is take a look at the £50 note symbol above. Now look through the ads in the Buyers' Guide section and spot THREE of them - they've been reduced in size, but they're there, somewhere!

Write down the names of the three ads where the £50 notes are located and send your entries on a postcard to: Note the Notes Competition, BIGGA, Aldwark Manor, Aldwark, Alne, York, North Yorkshire YO6 2NF, to be received by first post Wednesday, October 27, 1993. The first correct entry drawn after that date will win £50. It could be YOU! Enter today - and Note the Notes!

Judges' decision is final. Not open to BIGGA staff.

★ A full £50 better off as the winner of our September competition is Mr G A Hampton, of Pitlochry, Perthshire. Mr Hampton joins our growing band of Greenkeeper International winners - and for spending just a few minutes of his time. It could YOUR TURN to win this month!

## Animal Repellents

### SCUTTLE® ANIMAL REPELLENT

Up to ten weeks protection from browsing by rabbits from a single, effective spray application.

For product leaflet and the name of your nearest distributor, call

☎ 0734 510033  
Read the label before you buy. Use pesticides safely. Scuttle contains sulphuronated cod liver oil.

© Fine Agrochemicals Ltd., Worcester WR2 5AA.

Tell the industry of your products and services, through an advertisement in greenkeeping's top magazine GREENKEEPER INTERNATIONAL

## Arboriculture



- Tree Spade Hire
  - Semi Mature Trees supplied
  - Mulches supplied
- Ring for colour brochures

Iver, Bucks, SLO 9LA  
Tel 0753 652022  
Fax 0753 653007

## Architects

### JONATHAN GAUNT

B.A. (Hons.) Dip L.A.  
GOLF COURSE ARCHITECT

From feasibility studies to complete projects, including project management

40C NORWICH ROAD FOREST GATE LONDON E7 9JH

TEL: 081 555 8577 FAX: 081 519 6163

Associate of the British Institute of Golf Course Architects  
Candidate Member of the European Society of Golf Course Architects

## Artificial Grass

### TEETECTOR TEE MATS

The mat with the guarantee Unique heavy duty golf range and municipal mats.

25mm hand finished woven pile. 20mm shock pad.

Professional galvanised and painted frame. Any size, any shape. Double sided. Free Demo unit available. Trade welcome. Putting surface.

Contact: Evergreens UK

2 Extons Units  
Market Overton  
Oakham,  
Leics LE15 7PP  
Tel: (0572) 768208  
Fax: (0572) 768261



## F3 ORCE LEISURE

EXPERTS IN GOLF COURSE AND SPORTS FIELD CONSTRUCTION

### SYNTHETIC GRASS TEES & WINTER GREENS

The Limes Telephone: (0734) 323718  
37 High Street,  
Theale, Reading Facsimile:  
Berkshire RG7 5AH (0734) 323496

### PUTTING PLANS INTO PRACTICE

## Sports surface technology



- VERDE TEE FRAME  
Raised steel platform with fully adjustable legs. Top quality driving surface.
- VERDE WINTER TEE  
Spacious artificial tees. Self install kits for the practical groundsman looking for good value.
- VERDE DRIVING MATS  
Driving range and practice mats. Proven life of over two years on busy ranges. Best quality - Best prices.
- ARTIFICIAL PUTTING SURFACES
- ALL DRIVING RANGE REQUIREMENTS
- DRIVING BAYS FOR CLUB AND HOME.  
Comprehensive selection of frames & net enclosures.

Artificial, sports surfaces and equipment for a range of sport and leisure activities.

UNIT 25, COWLING MILL, COWLING BROW, CHORLEY, LANCASHIRE. PR6 0QG

TEL: 0257 269069 / 0257 269983 FAX: 0257 261064

PLEASE CALL FOR SAMPLES AND INFORMATION

## Bark



Ring for samples and colour brochure

Iver, Bucks, SLO 9LA  
Tel 0753 652022  
Fax 0753 653007

## Bowling Greens

### ROBERTS BOWLING GREENS

For an additional facility to your golf or leisure complex consult the leading UK bowling green contractors

Roberts Bowling Greens  
25 Selborne Way, East Preston,  
West Sussex BN16 2TG  
Tel: 0903 775965

## Buildings

### THE GREENKEEPER'S CHOICE



Secure valuable equipment  
Elwell Buildings Ltd  
204 Oldbury Road, West  
Bromwich, West Midlands B70 9DE  
Tel: 021-553 5723 (24 hrs)  
or fax on 021-580 1172





**Club Houses**  
**Driving Range Buildings**  
 GREENKEEPERS STORES DESIGNED TO INCLUDE:  
 As Required  
 ♦ Machinery Storage ♦ Maintenance Workshops  
 ♦ Fertiliser and Weedkiller Storage  
 ♦ Offices and Staff Mess Rooms  
 ♦ Any other specialist usages  
 FREE initial designs and costings  
 PLEASE CONTACT

**Ivan J Cooper Ltd**  
 Steel Framed Buildings  
 Moorside Works, Caudon Lowe,  
 Stoke-on-Trent ST10 3ET  
 Tel: 0538 702282 Fax: 0538 702662

### Chemical Disposal

**ENVIROGREEN**  
 SPECIAL WASTE DISPOSAL SERVICES

For all your disposal needs for either full or empty containers contact us now.

Tel/Fax 0345 125398

Reg. No. BRK-059342 issued by Berkshire County Council



### Cockleshell

**THE NATURAL PATHWAY MATERIAL. WHY?**

- Will not damage mowers
- Always looks clean
- Superb drainage
- Easy to lay
- Great value for money

Chatsworth Street, Barrow in Furness, Cumbria



Tel: (0229) 430477  
 Fax: (0229) 430488

### Construction

**G.O.L.F. LANDSCAPES LIMITED**

ASHWELLS ROAD, BENTLEY BRENTWOOD, ESSEX CM15 9SR

TEL: (0277) 373720  
 FAX: (0277) 374834

**IAN MARTIN and BOB HORNEGOLD**

Specialists in Project Management, Golf Course Construction, Renovation, Finishing and Maintenance Contracts.

Tel: (0277) 810616  
 or (0425) 655586

**STONE PICKING STONE BURYING**

For Golf Courses and Sportsgrounds. Contact Chris Badger

Tel: (0993) 830307



**C.J. Collins Construction**

Golf Course Contractors

Specialists in complete construction, or green, tee, bunker and drainage refurbishments



Burgess Hill, West Sussex

Tel: 0444 242993  
 Fax: 0444 247318

**BUNKERS**

Golf Course Construction, Alterations & Clubhouse Landscaping

National company equipped to offer you a full range of construction services for golf courses, including land drainage and bunker construction.

Contact Graham Baker  
 Tel: 0323 894896  
 3 Bramber Road, Seaford, East Sussex BN25 1AG

**Whitnell Contracts Ltd**  
 Golf Course Constructors



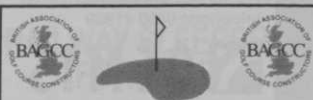
Lionel Whitnell  
 WOODLANDS ELLIS ROAD BOXED COLCHESTER ESSEX CO4 5RN  
 Telephone: (0206) 272834  
 Fax: (0206) 272104  
 Mobile: 0860 421074



**CONTACT THE PROFESSIONALS**

Tim Banks, Secretary, BAGCC, Angel Court, Dairy Yard, High Street, Market Harborough LE16 7NL.

Tel: 0858 464346



**LAND UNIT CONSTRUCTION**

Hanslope, Milton Keynes, MK19 7BX

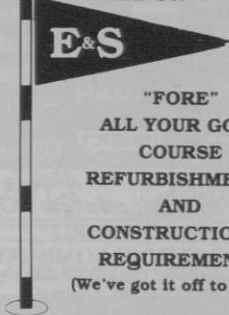
Telephone: 0908 510414  
 Fax: 0908 511056

**ROY DIXON**

Golf Course Construction

A fully equipped and experienced team is at your service for hire, £30 contract or sub-contract UK-Europe  
 Tel: (0434) 673521 Fax: 606601

**WHY SETTLE FOR LESS? CALL ON —**



"FORE"  
 ALL YOUR GOLF COURSE REFURBISHMENTS AND CONSTRUCTIONAL REQUIREMENTS  
 (We've got it off to a Tee!)

**(0344) 860690**  
 39 Knox Green, Binfield, Bracknell, Berks RG12 5NZ

**ESC**

**EURO STONE CLEAR**  
 Golf Course/Sportsground: Cultivation Stone-picking/Burying: Seeding/Turfing UK/Europe: Also Machinery Hire  
 Tel: (0434) 673521 Fax: 606601

**STONE PROBLEMS NO PROBLEM AVAILABLE FOR HIRE**



DE-STONING MACHINE suitable for use on Golf Course or other landscaping projects. Also STONE BURYING MACHINE for a perfect finish. These machines are currently only used on Golf Courses by our own experienced operators. Available by the hour, day, week or fixed price. Please ring the Bondhay Office for further details. Also available tracked and wheeled plant equipment all with Golf Construction experienced operators. Bondhay Lane, Whitwell, Worksop, Notts S80 3EH. Tel: 0909 723608 Fax: 0909 720226

**R. A. SLEATH & SON**  
 GOLF COURSE CONSTRUCTION AND SPORTSGROUND DRAINAGE

Work undertaken for many leading Golf Course Architects  
 Distance no object  
 Contact: Geoffrey R. Sleath  
 Tel: Rotherham (0709) 862109 Fax: (0709) 862075

### Course Accessories

**HERITAGE FAIRWAY**

Golf Range Equipment Engineered to Perfection  
 UK Manufacturers of Ball Dispensers, Washers, Conveyers, Ball Collectors and Ancillary Range Equipment  
 Heritage Fairway Limited  
 6 Marine Terrace Mews Brighton, Sussex  
 Tel: 0273 602637 Fax: 0273 571621

**Pattison**

Manufacturers and suppliers of golf course and driving range equipment

Pattison & Co. Ltd  
 342 Selbourne Road, Luton, Beds LU4 8NU  
 Tel: (0582) 597262  
 Fax: (0582) 505241

**WHY DOES TACIT'S FLAGPOLE LAST TWICE AS LONG?**



THE TOP SWIVELS



THE BOTTOM DOESN'T

**EAGLES, BIRDIES, FALDOS**

Tacit's upright flagpoles could have the same effect with your members.

TACIT - Suppliers of Holecups, Flagpoles and equipment for European Ryder Cup 1993 The Belfry.

**TACIT**

Manufacturers of quality Golf Course Accessories  
 Tel: 0788 568818  
 Fax: 0788 537485

### Disease



**GREEN CIRCLE**

Are you sterilising your root-zone with expensive fungicides?

Try the biological alternative that out-competes pathogenic fungi.

For case histories and references etc. contact:

Symbio

Tel: 081 669 0011 Fax: 081 773 8449

### Drainage



**CLC Ltd**

Services include:

- ★ Golf Course construction
  - ★ Green & Tee renovation
  - ★ Specialist drainage
  - ★ Professional consultancy
  - ★ Tree planting & management
- Tring House, High Street, Cranleigh, Surrey GU6 8RL  
 Tel: 0483 274800  
 Fax: 0483 268593





**WHITE HORSE**  
Contractors Limited  
SPORTSTURF  
Tel: Oxford (0865) 736272



**AGRIPOWER**  
LTD.

Construction  
Drainage  
Stone Picking  
Verti-Draining

Tel: (0494) 866776

**Driving Ranges**

**Be safe** Design and construction of high protective fencing for Golf Driving Ranges. Complete service from design to B.S., planning, fabrication through to erection.

Also complete range of Golf Netting Products including boundary nets, practice nets, bunker mesh, wind-break nets, stabilisation mesh.

**Be sure** to contact: Pelacon Construction part of the Pelacon Group at 1 Foundry Lane, Bridport DT6 3RP.  
Tel: 0308 25100 or Fax: 0308 58109



**Fertilisers**

**Sierrablen Turfmix**  
Controlled Release Fertilizer with fast start portion

A single application assures feeding for the whole growing season.  
High Quality. Proven In Practice

**Grace-Sierra UK Ltd**  
High technology in plant nutrition  
61 Loughborough Road, West Bridgford, Nottingham NG2 7LA  
Tel: 0602 455100 • Fax: 0602 455311


**Golf Course Consultant**

**David Hemstock Associates**

Consultants on:

- Golf Course upgrading
- New Course development
- Specialists in irrigation, drainage, contour and environmental surveys.

Suite 4d, East Mill, Bridgefoot, Belper, Derbyshire DE5 1XF.  
Tel: 0773 827115 Fax: 0773 821083  
Mobile: 0850 744957



**Golf Course Supplies**



We supply top quality products and services to golf clubs, sports grounds, local authorities, parks, racecourses, greenkeepers and groundsmen throughout the UK.

For further information, please ring PAT on 0235 772000 for a free copy of our CATALOGUE and PRICE LIST

**Grass Cutting Equipment**

**SAVE MONEY!**




EX DEMONSTRATION AND TOP QUALITY REMANUFACTURED GOLF COURSE MACHINERY AVAILABLE FROM STOCK

RANSOMES TORO JACOBSEN  
RYAN HAYTER BEAVER  
sisis CUSHMAN ROYER  
VERTI-DRAIN  
Loyds ISEKI KUBOTA

UK & EXPORT DELIVERY ARRANGED  
Phone for a full catalogue NOW

**GREENSWARD ENGINEERING COMPANY**  
Manor Farm, Otley Road, Adel, Leeds LS16 7AL, England  
Tel: (0532) 676000

**Grass Germination**



GERMINATION SHEETS  
FROST PROTECTION SHEETS  
TARGET NETS  
PERIMETER NETTING

AVAILABLE FROM ALL GOOD DISTRIBUTORS

**TILDENET LIMITED**  
Longbrook House, Ashton Vale Road, Bristol BS3 2HA  
Tel: (0272) 669684  
Fax: (0272) 231251

**Grass Seed Mixtures**



**great in grass**

The finest range of mixtures for all your sports, amenity and landscaping needs.

Barenbrug UK Limited  
PO Box 2 Rougham Industrial Estate  
Bury St Edmunds Suffolk  
Tel: (0359) 70766 Fax: (0359) 71021

**Irrigation**

**CAN WE CUT YOUR WATER COSTS AND BOOST YOUR PROFITS?**

Specialist water well engineers

- ★ Survey ★ Drilling ★ Casing ★ Pumping Plant
- ★ Storage Tanks/Pressure Vessel ★ Drainage Wells

**BLAIR DRILLING LTD**  
c/o Merrydale Farm, Chelford Lane, Over Peover, Knutsford, Cheshire WA16 8UG  
Tel: Day 0625 860974  
Evening: 045 7765409  
- ask for Geoff



Members of the British Drilling Association



**MIDLAND IRRIGATION**  
AN INDEPENDENT IRRIGATION COMPANY

2 Fairdene Way, Great Barr, Birmingham B43 5JS  
Tel: 021 358 1246  
Fax: 021 357 6789

DESIGN • SUPPLY  
INSTALLATION • SERVICE

**Automatic Watering Systems for Sports and Leisure Grounds**  
● Designed ● Supplied ● Installed

**GLEN HEAT & IRRIGATION**  
Pinchbeck, Spalding, Lincs.

**Gh** Tel: (0775) 722327  
Fax: (0775) 725444

**MIST IRRIGATION SYSTEM CONTROLS LTD**

- ★ Manufacturers of Irrigation Equipment ★
- ★ Design and Installation ★
- ★ All Types Systems Serviced ★

Unit 18, Hightown Ind. Est., Ringwood, Hants BH24 1ND  
Phone (0425) 474614 Fax: (0425) 471296

**Watermation**

Manufacturers, designers and installers of

**GOLF COURSE IRRIGATION FOR 23 YEARS**

Tongham Road, Aldershot, Hants GU12 4AA  
Tel: 0252 336838  
Fax: 0252 336808

**Prime Watermen**

IRRIGATION DESIGN AND INSTALLATION SERVICE

WANGFORD • BECCLES  
SUFFOLK NR34 8AX

Tel: 050 278 481

MEMBER OF BTLIA

**Weathermatic**  
SPRINKLER SYSTEMS

**IRRIGATION TECHNICAL SERVICES**  
Approved Toro service centre. All leading manufacturers' equipment maintained and serviced. Contact Stuart Mills Tel/Fax 0202 874216  
43 Pinehurst Road, West Moors, Dorset

**T. & G. TURF IRRIGATION SERVICES**  
8 Whitcliffe Grove, Ripon, North Yorkshire HG4 2JW  
Tel: (0765) 602941 (0423) 864963  
Full member of B.T.L.I.A.

**A National Irrigation Service**

Free consultation and design service

Suppliers of quality products for all types of irrigation

Local installation and maintenance throughout the UK

Specialists in the refurbishment of existing irrigation systems

For further information telephone 0460 41939



**OCMIS**

Design and service you can trust

**FLANDERBLADE LTD**  
Specialists in golf course irrigation  
20 Whiteacre, Littlehampton, West Sussex BN17 7JA  
Tel: (0903) 724545  
Full member of B.T.L.I.A.

**I.L.S.** for all aspects of GOLF COURSE IRRIGATION

- Installation • Service
- Extensions and Improvements
- Pumping Systems

Oundle Road  
Luton  
Peterborough  
PE8 5ND

Tel: Oundle (0832) 272450



**BELL TURF & IRRIGATION SERVICES**

East Midlands Area  
Installation, Sales and Service

Everton, Doncaster, DN10 5DR  
Tel: (0777) 817410

**Hunter**  
The Irrigation Innovators

**Gear driven sprinklers including the new golf range available from S.G.I. Sales**

6 Stuart Road, Market Harborough, Leics LE16 9PQ  
Tel: 0858 463153  
Fax: 0858 410085  
NOW YOU HAVE A CHOICE!



**PAR 4 (IRRIGATION) LTD**

**TORO**

Installation Sales & Service  
N.E. England, Yorkshire, N. Lincs, N. Derbys, N. & S. Humberside

Contact: E.B. & L. Simms  
Tel: (0765) 602175 Fax: (0765) 603488  
Par 4, Unit 18, Camphill Close, Dallamires Lane, Ripon, N. Yorks HG4 1TT

- DESIGN
- INSTALLATION
- SERVICE -

For a free estimate give us a call now - we'll do the rest



**LANDSCAPE IRRIGATION SYSTEMS**

0425 473790  
Fax 0425 471157

River View  
Old Salisbury Road  
Ringwood, Hampshire  
BH24 1AS



**STRANCO**

Water Quality Control

pH and chlorine control and dosing systems for your irrigation water, for improved turf quality.

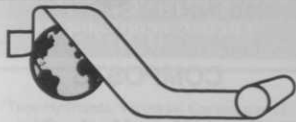
Nationwide installation and commissioning service and advice.  
Contact Brian Sykes  
STRANCO LTD  
Commercial Road, Eastbourne, East Sussex. Tel: (0323) 646163



## BRITISH OVERHEAD IRRIGATION LTD.

• Manufacture Equipment  
• Design and Install Systems  
The Green, Upper Hallford,  
Shepperton, Middlesex TW17 8RY  
Tel. (0932) 788301. Fax. (0932) 780437

## Lake Construction



### GT GROUP

LEAST COST WATERPROOFING AND CONSTRUCTION OF LAKES AND RESERVOIRS - using lining membranes and associated geosynthetic materials.  
♦ Comprehensive service available to owners/architects/consultants and contractors.  
GT GROUP, Nags Corner, Wiston Road, Nayland, COLCHESTER CO6 4LT  
For technical and sales enquiries  
Tel: (0206) 262676  
Fax: (0206) 262998

## Line Marking



### AEROSOL Line Marking Paint

For marking GUR's, Pathways, Car Parks etc  
From £7.50 for a 750ml can  
Bowman Products Ltd  
Tel: 0706 882291 Fax: 0706 291000  
Southern office:  
Harry S Jenkins Ltd  
Tel: 0633 259181 Fax: 0633 211763

## Mower Spares

### MOWER ACCESSORIES LTD

Manufacturers of high quality lawnmower blades and cylinders. Suppliers of spares and accessories.

65 Forncett Street  
Sheffield S4

Tel: 0742 765825  
Fax: 0742 765855

## Nursery Stock

### D.W.FROST (WHOLESALE NURSERIES) LTD



Suppliers to Golf Clubs, Landscape Contractors and Local Authorities  
Growers of top quality container and field grown nursery stock - over 80 acres of tree production.  
For further help and information contact:  
Fosseway Nurseries, Car Colston, Bingham, Notts NG13 8JA  
(0949) 20445/20154 or FAX 0949 21154

### West Lancashire Nurseries Ltd

Specialist suppliers to Golf Clubs - countrywide.  
We will supply plants exactly to your specifications and plant it if required.  
For further information, please contact our sales department:  
West Lancashire Nurseries Ltd, PO Box 42, Wigan Road, Leyland, Lancs.  
Tel: 0772 432611 Fax: 0772 621492

## Path Gravels



ALL TYPES OF SAND AND AGGREGATES  
Cockleshells - Redgra  
Self-binding Gravels  
Also Bunker Sands and Top Dressings  
Phone: 0453 548663  
0836 514266  
Unit 7a, Taits Hill Ind. Est.  
Stinchcombe, Dursley, Glos GL11 6BL

## pH Adjustment

## High pH?

**Liquid Sulphur**  
is a unique source of flowable sulphur for use as a nutrient additive or pH adjuster.

Available exclusively from  
**Liquid Sod**  
and its distributors.

Ring 0963 251129 today for more information and your own FREE pH adjuster chart.

LIQUID SOD, LINDEN VIEW,  
REDWING ROAD, MILBORNE PORT,  
SHERBORNE, DORSET, DT9 5DB

## Pumps

## GRUNDFOS PUMPS

FOR SPORTS & RECREATIONAL TURF IRRIGATION, BOOSTING AND WATER SUPPLY

Contact our sales offices today for full information on the Grundfos range  
SOUTH: (0525) 850000  
NORTH: (0925) 813300

**GRUNDFOS**  
GRUNDFOS PUMPS LTD GROVEBURY ROAD,  
LEIGHTON BUZZARD, BEDS. LU7 8TL

## Railway Sleepers

RAILWAY SLEEPERS  
8'6" x 10" x 5"  
CROSSING TIMBERS  
12" x 6" up to 16' long  
Price quoted for number required.  
Tel (0233) 625121 or 620277  
Fagg's Fleet, Whitfield Road,  
Ashford, Kent TN23 1TY

### ASHWELL RECYCLING COMPANY LTD

Unit G, Criton Industrial Estate,  
Stanford Road, Orsett, Essex RM16 3DH  
Tel: 0375 892576 Fax: 0375 891736

## RAILWAY SLEEPERS FOR SALE

Ideal for ★ Tees ★ Bunkers ★ Bridges etc.  
Also Telegraph Poles, RSJs, UB Steel Sections - all cut to your requirements.  
Transport at cost.

## Sand/Silica Sand

**Martin Brothers**  
MONEYSTONE BUNKER SAND, BRITAIN'S NATIONAL SUPPLIER  
No. 1  
ACTION LINE  
0625 584571

*Drinkwater Sable Ltd*  
(EBENEZER MEARS)  
KINGSLEY FINE WASHED SAND  
for Tees · Greens · Bunkers  
and drainage sands and shingles  
Wintersells Road, Byfleet, KT14 7AZ  
**0932 345616**

**GARSIDE SANDS**  
Complete range of dried graded silica sands for all purposes.  
Contact John Deavin at  
Eastern Way Works,  
Eastern Way, Heath & Reach,  
Leighton Buzzard,  
Beds LU7 9LF  
Tel: (0525) 237911  
Fax: (0525) 237991

**ARC BUCKLAND INDUSTRIAL MINERALS**  
Sand and Silica Company  
COMPLETE RANGE OF HORTICULTURAL SANDS  
Contact Lynda Jordan  
Buckland Sand & Silica Co.  
Reigate Heath, Reigate,  
Surrey RH2 9RG  
Tel: (0737) 240151

**MONEYSTONE BUNKER SAND**  
Granular and Free Draining  
Delivered loose bulk, all parts.  
For cheapest prices contact:  
Jim Burrows at  
M & B SUPPLIES  
Baths Road, Longton,  
Stoke on Trent ST3 2JQ  
Tel: (0782) 598383  
Fax: (0782) 598174

## Screeners/Shredders

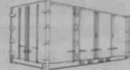
**GRADE ALL**  
GRADEALL INTERNATIONAL LIMITED  
Manufacturers of the SS100 Screener/Shredder  
9 Farlough Road, Dungannon,  
Northern Ireland BT71 4DT  
Tel: 08687 40484 · Fax: 08687 48823

## Seats

**Gloster**  
FINE TEAK FURNITURE  
Seats, tables, chairs, benches, planters and litterbins made from plantation grown teak. Listed in the Good Wood Guide. Send for brochure  
D-Scan (UK) Ltd Concorde Road,  
Patchway, Bristol BS12 5TB  
Tel: 0272 315335 Fax: 0272 315334

## Secure Storage

SECURE STEEL LOCK-UPS  
(Ex Shipping Containers)  
FOR SALE OR HIRE



Delivered to your golf club or premises by self unloading lorries within 24 hours (Mainland UK)  
10' x 8', 20' x 8' and 40' x 8' insulated or uninsulated.  
IF YOU NEED ECONOMIC SECURE STORAGE RING NOW FOR PROMPT EFFICIENT SERVICE  
**LAWRENCE CONTAINERS**  
Tel: 0622 820308  
Fax: 0622 820300

## Tee Mats

**MATEEK Tee Mats**  
GOLF COURSE - DRIVING RANGE TEE MATS & FRAMES  
Tel: 0291 625351  
Fax: 0291 628203

**TUFTURF**  
ARTIFICIAL GRASS TEE MATS, DRIVING RANGE MATS AND PUTTING SURFACES FROM  
**CARPETITION LTD**  
14 Kaffir Road, Edgerton,  
Huddersfield HD2 2AN  
Tel: (0484) 428777 Fax: (0484) 423251

## Timber Structures

**TIMBERMAT**  
Protect your greens from heavy machines - hire Timbermats.  
Phone 061 476 6252 Fax 061 476 6253  
NATIONWIDE SERVICE

## Top Dressings

**ALL SEASONS DRESSING**  
Top Dressings · Sands · Top Soils · Ferr Soil.  
Suppliers of Soils for Golf Courses.  
Britain's leading Top Dress supplies  
★ Top Dressing ★ Root Zone Mix ★ Screened Soil ★ Sands ★ Construction  
119 London Road, Kingston upon Thames, Surrey KT2 6NH.  
**Tel: 081 546 3960**  
Mobile: 0831 871939 · Fax: 081 547 1923



## Top Soil

### BLACK FEN TOP SOIL

Mixed with 75% peat. Screened and graded. No stones guaranteed.  
£6 per ton +VAT ex yard.  
Tel: daytime 0733 244692  
evening 073 129 350

## Tree Planting



### Eastcote Nurseries (Solihull) Ltd

- ★ Tree Spade hire
- ★ Tree moving
- ★ Semi mature trees

Nationwide service  
Hampton Road, Barston, Solihull,  
West Midlands B92 0JL

Tel: 0675 442033  
Fax: 0675 442324

### GOLDSMITH TREES & LANDSCAPES

Specialists in growing, supplying, planting and moving of

### TREES

Crown Nursery, High Street  
Ufford, Suffolk IP13 6EL

Telephone: 0394 460755

## Trenchers

### CASE TRENCHERS TRENCHEX PLANT SALES

Dove Fields, Uttoxeter, Staffs.  
Fax: (0889) 563140.  
Tel: (0889) 565155

## Turf

### TURF GROWN TO YOUR SEED SPECIFICATION

or from our stock  
ALL GROWN IN STERILE COMPOST

Supplied nationwide  
**GREENKEEPER LTD,**  
Shelford Manor, Shelford,  
Nottingham NG12 1ER  
Tel: 0949 21144  
Fax: 0602 862139

## TILLERS

Growers of high quality turf supplied nationwide in standard and big rolls  
Tel: 0652 650555 • Fax: 0652 650064

## THAMES TURF

High quality cultivated turf for golf courses and sports surfaces.  
Finest sands, loams, compost and lawn dressings also available.

- ★ Direct nationwide delivery ★

Contact: Gail Trotter  
Tel/Fax: 0628 76804

**THAMES TURF**  
Lillibrooke Manor Farm,  
Ockwells Road, Cox Green,  
Maidenhead, Berks SL6 3LP

THE ULTIMATE SAND-BASED GREENS TURF  
**SAVANA TURF GROWERS LTD**  
SPORTS & AMENITY  
SAVANA TURF GROWERS LTD  
45 FAIRLAWNS, NEWMARKET, SUFFOLK  
CB8 8JS Fax: 0638-360555  
**(0638) 560111**  
**(0831) 618000**

### CUCKMERE VALLEY TURF FARMS

### Specialist turf producers for the South East

Common Lane, Berwick,  
Polegate, East Sussex BN26 6SU

Tel: 0323 870773  
Fax: 0323 870285

### EXCELLENCE THROUGH EXPERIENCE

### Shelford

TURF FARMS

Beech Tree Farm, Shepreth Road,  
Foxton, Cambridge  
Tel: (0223) 871814. Fax: (0223) 872354

### Tip Top Turf.

Seed grown turf available in one sq yd or large 25 sq yd rolls with laying machines or service available.

Tel: 0908 270701 • Fax: 0908 374889

## INTURF

GROWERS AND SUPPLIERS OF HIGH QUALITY CULTIVATED TURF FOR ALL APPLICATIONS AND APPOINTED OFFICIAL TURF PRODUCERS TO WEMBLEY STADIUM

Please contact Head Office for more information:

### THE INTURF GROUP

Regent Street • Pocklington • York YO4 2QN  
Telephone 0759 304101 • Fax 0759 305229



## Grasslands

Specialist Seed Grown. Turf Producers  
Covering the SOUTH EAST.

Grasslands Turf Farm, Ashford Road, New Romney, Kent TN28 8TH. Tel/Fax: (0679) 67130

## FAIRFIELD TURF LTD

6 GRADES OF MATURE CULTIVATED TURF, TOPDRESSINGS, ROOTZONES, RH30 SAND, BUNKER SANDS, TOPSOILS, AGGREGATES, F-RANGE OF GRASS SEED MIXES, TOPGREEN RANGE OF GRASS SEEDS

**(0797) 344731**  
Fax: (0797) 344737

## Turf Dressings

## ARENA

### Sportsturf Ltd

South - Tel: (0823) 432231 Fax: (0823) 432231  
North - Tel: (0229) 65555 Fax: (0229) 65555

- ★ Top Dressing ★ Root Zone Mix ★
- ★ Screened Soil ★ Sands ★
- ★ Construction ★ Cockleshells ★

## FEN TURF DRESSINGS LTD

for Fendress Top Dressing

- Fendress Superfine
- Economy Dressing
- Rootzone Mixes
- Screened Fensoil • Screened Peat
- Screened Loam • Kiln Dried Sand • Bunker Sands



Tel: (0858) 464346/433003  
Fax: (0858) 434734



### "The Tops in Top Dressing"

THE FINEST QUALITY TOP DRESSINGS, ROOT ZONES AND TEES MIXTURES DELIVERED NATIONWIDE

**ACTION LINE**  
0625 584571

## BAILEY'S OF NORFOLK

supply  
Professional Turf Dressings for the Profession

GOLF TURF DRESSINGS  
Approved formulations for use in Construction and on the finest greens, tees and fairways.

### SAND

All requirements catered for including lime free. Kiln dried sands available.

### SCREENED TOP SOIL

Including the finest Black Fenland Soil. Screened loams to customers' individual specifications. We also produce and supply root zone mix and always have vast stocks of cockle shells for immediate delivery

### DELIVERIES NATIONWIDE

**BAILEY'S OF NORFOLK**  
Brick Kiln Road, Hevingham,  
Norwich, Norfolk NR10 5NL  
Tel: 060 548 607  
Mobile: 0860 661603

## Rufford

### TOP-DRESS SUPPLIES

Britain's No. 1 for  
QUALITY • SERVICE •  
SHEER VALUE FOR MONEY

Fairway House, South Stage, Broadway,  
Salford Quays, Manchester M5 2UQ  
Tel: 061 877 8550 Fax: 061 877 8554

## BL BOUGHTON LOAM LTD.

For  
TURF DRESSINGS  
ROOT ZONE MIXES  
SCREENED TOP SOILS  
BUNKER SANDS  
HORTICULTURAL  
COMPOSTS

Telford Way, Kettering,  
Northants  
Tel: 0536 510515

## Turf Netting

### CONWED TURF REINFORCEMENT

For faster turf production  
WEST MIDLAND TURF GROWERS  
Tel: (074-631) 247 Fax: (0746) 767331

## Tyres

### IN A SPIN? Call



SPECIALISTS IN TYRES & WHEELS

- ★ Turf Tyres
- ★ ATV Tyres
- ★ Custom made wheels available
- ★ Standard wheels ex-stock

National Supplier

Tel: 0205 73578  
Fax: 0205 73520



### Sam Moreton & Sons TURF TYRE

Turf Tyres of all makes to fit any machine. Wheels made to customer requirements.

Enquiries 0926 632269  
Fax 0926 632023  
Orders 0926 613737

Nationwide delivery service

## Vertidrain Hire

### PETER MANNINGTON



Specialist Verti-Drain Contractor for the South  
For greens, tees, fairways and sportsgrounds  
Experienced operator, competitive prices and reliable service

Phone Peter on 0580 200205  
or Mobile 0850 612061

Sheepwash Farm, Church Street, Ticehurst,  
Wadhurst, East Sussex TN5 7DL

## WORTH DRAINING

VERTIDRAINING and  
HOLLOW CORING HIRE  
with the G.A. 30

Contact Peter Bloodworth  
**WORTH DRAINING**  
Cornbecks Farm, Irnham, Grantham,  
Lincolnshire Tel/Fax: (0476) 550266





**VERTIDRAIN MACHINES FOR FAIRWAYS AND GREENS AVAILABLE FOR HIRE**  
 Contact: Peter Holmes, 10 Carson Road, Gainsborough, Lincs DN21 2RE  
 Tel: 0427 613035  
 Mobile: 0831 359394

Toro Hydroject, Vertidrain Coremaster 12 and Ryan Greensaire + Core Harvester, Charterhouse, Sisis and Gill Overseeders, Ransomes 214 and Beaver 308 Fairway Scarifiers. Large range of tractors from 16 - 60 HP, as well as machinery for sale.  
 List and further details from:

**Richard Campey**  
 Marton Hall Lane, Marton, Maclesfield  
 Tel: 0260 224568  
 Fax: 0260 224791

**E&S SPORTSGROUND CONTRACTORS**

We're No. 1 for Vertidrain and Hollow Coring on Greens, Tees and Fairways.

For competitive rates and a professional service, contact

**RICHARD VEITCH**  
**0344 860690**

39 Knox Green, Binfield, Bracknell, Berks RG12 5NZ

**SEWARD**

**TURF MAINTENANCE**

CONTACT THE PROFESSIONALS

Ten years experience using only the best 2 greens verti-drains (18 greens in 2 days)

Half-inch tines at 2x2 spacing

Fairway verti-drain

Coremaster complete with collector

Fairway overseeder

Contact Michael Seward

York (0904) 765949 night or day

**HERONFIELD HIRE**

(Solihull)

Vertidrain, Moore Sportsfield

Over-Seeders, Verti

Over-Seeder for Greens & Tees,

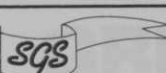
Toro Aerators, Case Trenchers

& Sportsfield Slitters etc.

Contact: Doug or Ron Johnson

Tel: (0564) 772597

Fax available



◆ Verti Drain Hire ◆ Hollow Coring

◆ Deep Spiking ◆ Tractor Hire

◆ Full range of Landscape

Equipment

YORKSHIRE'S ONLY AGENT FOR WIEDENMANN TERRA-SPIKE

**SPEN GROUND CARE SERVICES**

Unit 7, Valley Road, Liversedge,

West Yorkshire WF15 6JY

0924 401522 • 0836 722080

**ROSS OLIVER**  
 SPORTS GROUND CONSTRUCTION AND MAINTENANCE

- ◆ VERTI-DRAIN for Greens and Sportsgrounds
  - ◆ STONE PICKING ◆ RYAN HOLLOW TYNER
  - ◆ SAND SPREADERS ◆ DIRECT DRILLS
- Greystones, Trebudamon, Cornwall TR8 4LP.  
 Tel: (0841) 540222 Fax: (0637) 881057

You're at the end of the Buyers' Guide section — if you haven't found

the ads with the 3 symbols in yet, TRY AGAIN: IT COULD BE

WORTH

**£50**

TO YOU!

**Classified**

**RFE Turf Machinery Ltd**

Toro 216  
 Ransomes Mk II Sportscutter Gangs (choice)  
 Ransomes Mk 13 Magna Gangs (choice)  
 Farmura Turf Iron  
 Sisis Auto-Outfield Spiker  
 Sisis Vee-Mows  
 Jacobsen Greens King, diesel or petrol (choice)  
 Ez-e-go Trucks (choice)  
 Jacobsen Trapping  
 Lloyds Palladin  
 McConnel Seko BM23 Turf Groomer  
 Cushman Brouwer Triple Power Gangs  
 Easy Picker Ball Pickers, at special prices  
 Tel: (073081) 5775  
 Fax: (073081) 5844

**GADPACK LTD**

Hertfordshire  
 Tel: 0582 842435  
 Verti-drain Hire  
 £275 per day  
 SALE: Atterton & Ellis Grinders Master / B.B.  
 £5,500 plus VAT. VGC



Ring Risboro' Turf on 0844 274127 or fax 0844 274191 about any of our current used machinery listed below:

Jacobsen 1671 Diesel TriKing 3WD, Boxes, 1200 hrs.....	£7500.00
Jacobsen 1471 Petrol TriKing .....	£4500.00
Charterhouse Easy Spread Top Dresser .....	£1250.00
Vicon 303 Engine Drive Spreader for Truckster .....	£650.00
Ransomes TM80 Mounted Spiker .....	£250.00
Toro GM3 Reconditioned complete with Green and Verticut units .....	£2500.00
Iseki TA545 4WD Tractor 2DA SCV, PVH, Turf Tyres, 1200hrs.....	£8750.00
Brouwer MO1 PTO 5 Gang Fixed Head Mowers .....	£3250.00
Lloyds LEDA Set 5 Bladed .....	£1750.00
Morrison Triplex 1800 complete with Grass Boxes .....	£1750.00
Bucher M300XL complete with 36" Rotary Mower .....	£1000.00
Ransomes Wayfarer 30" Rotary - choice of 2 (each) .....	£1000.00
Lloyds 21" Paladin 1991 vgc .....	£1195.00
Ransomes 20" Marquis 1991 .....	£425.00
Beaver T24 Triple 1991 1030 6 Bladed heads.....	£9750.00

All prices are plus VAT at the current rate prevailing. All prices are ex our yard.

**For Sale**

**TOTAL TIMBER ENGINEERING**  
**HICKSON LEISURE DEVELOPMENTS**

**BRIDGES**  
 Pedestrian and Vehicular

**REVTMENTS**

**SHEET PILING**

**SHELTERS**

HICKSON LEISURE DEVELOPMENTS  
 NEW POTTER GRANGE ROAD, GOOLE  
 NORTH HUMBERSIDE DN14 6XF  
 telephone (0405) 766060 fax (0405) 768622

**AEBI/TT/80**

'H' Registration (1991)  
 Clean and tidy condition.

For details telephone:  
**081 881 1001**

**DEMO/SHOPSOILED EQUIPMENT**

Modus T 48" Main Frame complete with deep and surface aerators, scarifier and combi tool .....£1500.00  
 Beaver P9 Side Arm Flail for compact tractor .....£1750.00  
 Amazone Groundkeeper GH120 .....£2650.00  
 Amazone EKS300 Spreader .....£500.00  
 Beaver LM308 Mounted Gangs.....£3250.00  
 Many items of used equipment for sale - ring for details.

**WOODLANDS BRIGSTOCK LTD**  
 Brigstock, Kettering, Northants  
 Tel: 0536 373238

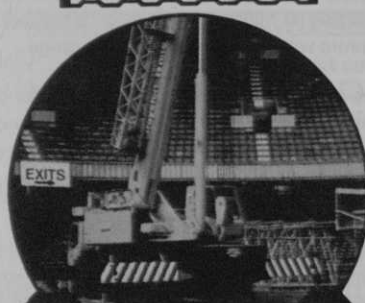
**Aeration**

**Quality Hire Equipment**  
 2.5 MTR FAIRWAY and 1.5MTR GREENS  
 VERTI-DRAINS  
 TORO FAIRWAY HOLLOW CORING

D&E Turf Maintenance Ltd Tel/Fax: 0388 608620  
 Mobile: 0836 376944 Evenings: 0388 772844

**Portable Roadway Systems**

**eve TRAKWAY**



ASTRO TURF AVAILABLE  
 IN GOOD USED CONDITION  
 OFFERS INVITED

- PORTABLE ROADWAYS
- SECURITY FENCING
- BRIDGES
- PEDESTRIAN CARPET
- ARENA SURFACE PROTECTION
- CROWD CONTROL BARRIERS

a division of **eve** group plc

EVE TRAKWAY LTD., COXMOOR ROAD,  
 SUTTON-IN-ASHFIELD, NOTTS. NG17 5LA, ENGLAND  
 TEL: (0623) 515333 FAX: (0623) 440154



## Tylney Park Golf Club

Rotherwick, near Basingstoke, Hampshire RG27 9AY

**Hard working**

# HEAD GREENKEEPER

required for attractive 18 hole mature parkland course (1974).

Applicants with mechanical aptitude must possess recognised qualifications and be experienced in all aspects of course management and presentation.

Ability to lead and motivate staff is essential.

Salary negotiable.

Please send written application with full CV to:

**Tylney Investments Ltd**  
Elmfield House, Woodfalls, Salisbury,  
Wiltshire SP5 2ND



**MOUNT MURRAY**  
COUNTRY CLUB

**Isle of Man**

requires a

# HEAD GREENKEEPER

This is a golden opportunity for an experienced fully qualified greenkeeper to make his name in the final shaping and growing in of this beautiful 18 hole golf course nestling in a hilly landscape with deciduous and coniferous woodland adjoining.

Must be able to show proven ability in all aspects of golf course maintenance and be capable of supervising manual staff. Knowledge of sand/peat greens, computerised irrigation systems and modern machinery is desirable.

Accommodation is available and the remuneration package will include a bonus payable when the course opens in spring 1994.

If you are a hard worker anxious to prove yourself in a challenging position this is the chance you have been waiting for.

Please reply in confidence with full CV and details of present salary to:

**Gary Spence**  
Land and Property Management Services (UK) Ltd,  
Stanhope House, Market Street,  
Shipley, West Yorkshire BD18 3QD

## TECHNICAL SALES REPRESENTATIVE

Established over 50 years, we are a forward thinking family business acting as major distributors for a number of manufacturers with an extensive product range.

We require a Technical Sales Representative for our Sports/Amenity Department to sell a wide variety of products including fertilizers and chemicals in the following counties:

Northamptonshire, Leicestershire, Nottinghamshire, and Derbyshire

Conditions of employment are excellent, as could be expected from a company of our standing in this industry, and include 4 weeks holiday initially, a fully expensed company car with mobile phone, plus the opportunity of career advancement as we provide extensive training and always look to promote from within our own organisation.

There is also a non-contributory private health scheme for our employees.

Only experienced candidates need apply in writing with full CV to Mr L Breakwell



**E.T. Breakwell Ltd**

Specialists in Grass Maintenance Equipment and Sports Turf Treatments  
814 Stratford Road, Shirley, Solihull, West Midlands B90 4BJ  
Tel: 021 733 3344 • Fax: 021 733 16131

## Abbeydale Golf Club

require a

# HEAD GREENKEEPER

Applications are invited for the above position at one of South Yorkshire's premier golf courses which will celebrate its centenary in 1995.

Fully experienced greenkeepers with the appropriate qualifications in course management and a sound knowledge of modern greenkeeping methods are encouraged to apply.

A proven track record in course maintenance, organisational skills and the ability to maintain a wide range of modern equipment is essential.

Salary is negotiable but is expected to exceed the BIGGA recommended rate.

Applications in writing to:  
**Mr Jack Copeland, Chairman of Green,**  
Abbeydale Golf Club Ltd, Twentywell Lane,  
Dore, Sheffield S17 4QA





## Chestfield Golf Club

require a

# HEAD GREENKEEPER

A busy 18 hole parkland course requires applicants due to the retirement of the existing Head Greenkeeper through illness.

It is essential to be experienced in all aspects of course management, machinery and irrigation. An ability to manage, lead and motivate staff is a priority, to include on course training.

An up-to-date awareness of the health and safety regulations is also essential together with the ability to work within the budget as laid down by the club.

No accommodation available.

Salary according to BIGGA scales.

Please reply in writing with full CV to:

**The Secretary, Chestfield Golf Club, 103 Chestfield Road, Chestfield, Whitstable, Kent CT5 3LU**

## ALNMOUTH GOLF CLUB

Foxton Hall

requires a

# HEAD GREENKEEPER

Applicants must be experienced in all aspects of greenkeeping, be properly qualified, and have the ability to manage and motivate greens staff.

Knowledge of a computerised course irrigation system (Toro), and modern machinery is essential.

Good accommodation available.

Please apply in writing with FULL CV

**The Secretary**

**Alnmouth Golf Club**

**Foxton Hall, Lesbury, Alnwick, Northumberland NE66 3BE**

## SALESPERSON

### PROFESSIONAL GROUND CARE MACHINERY

Due to expansion of our groundcare division we are seeking to recruit a salesperson to further increase our sales of professional grass and groundcare machinery. Our main supplier is John Deere and our customers are local authorities, golf courses, sports clubs and landscape gardeners throughout the Lothians.

Applications are invited from candidates with experience of this market sector, who believe they can contribute to this developing part of our business.

Please apply in writing to:

**Mr Andrew Harkness,  
Thomas Sherriff & Co. Ltd.,  
Groundcare Division, Mill Wynd, Haddington,  
East Lothian EH41 4DB**



## CONTRACTS AND TECHNICAL ASSISTANT

Due to further expansion in Scotland we are seeking the above personnel to join our Company to promote our

### ADVISORY and SPORTSTURF CONTRACTING SERVICES

All applications will be treated in strict confidence.  
Please write enclosing a detailed CV to  
M B Eddington - Senior Partner



### SPORTS TURF SERVICES CONTRACTING

Newbridge, Midlothian EH28 8LE Fax: 031 333 5311 Tel: 031 333 2345



## Castle Royle Golf and Country Club

require:

- (1) Fully qualified ASSISTANT HEAD GREENKEEPER
- (2) A fully or semi-qualified ASSISTANT GREENKEEPER

This is a Neil Coles designed, championship course, currently in the growing in period, due to open in June 1994. These are salaried positions with opportunities for career progression.

Applications should write with full CV to:

**The Course Manager, Castle Royle Golf & Country Club,  
Knowl Hill, Reading, Berks RG10 9XA**

## Grimsby Golf Club

require a fully qualified

# ASSISTANT HEAD GREENKEEPER

with the opportunity for career progression.

Applications in writing with a full CV to:

**The Secretary**

**Grimsby Golf Club,**

**Littlecoates Road, Grimsby,  
South Humberside DN34 4LU**



35 → and thanks must go to Neil, Edna & Elliott for their organisation – and of course to our main sponsors, ICI, for three great days.

On the social side everything appeared to go very well: the skittles and whisky tasting evening attracting a good number and the banquet on Tuesday evening was first class. All of these 'events within an event' have to be organised well in advance and the social committee from East Scotland worked hard over the year to make them happen. Day trips for the ladies were also organised, but for one reason or another these fell by the wayside – a pity, as we're sure the ladies would have enjoyed them. Grateful thanks then to the following, for making the social side the success it was: Alan Ronaldson the piper, Cecil George for his 'Address to the Haggis'; Kirsty Greenwood, the excellent dancer; plus Fiona & mum Agnes Greenwood for their assistance, and comedian Gary Dennis. The social committee consisted of 'yours truly', Stewart & Agnes Greenwood and Steve Dixon. To all who took part in the tournament we say 'haste ye back.'

With this event behind us we can now concentrate on section events: The Willie Woods Memorial event this month (19 October) sees us again returning to Dunbar, with the AGM taking place on 24 November, followed by the annual dance on 4 December (at Turnhouse). Returning to the Willie Woods event, we are delighted to have a new sponsor – Huxley's Grass Machinery – who have kindly offered to donate the prizes. I've met the local agent, George Brown, and the final details are almost to hand. Information regarding all events (including the winter programme), will soon be posted to section members.



WILLIE BLAIR

#### SUSSEX

The weather forecasters said 'warm with a few showers'. Fact – torrential rain and blowing a 'hooli' from tee-off until conclusion of the first round! Anyway, our mid-summer (?) 36 hole tournament saw us at the newly opened Singing Hills GC, near Brighton..... and how well course manager Richard Quelch and his team have done. The greens, sown with pure creeping bent, have been a struggle, but on the day they looked and putted superbly. The tees and fairways were well manicured and the general feeling of our forty-plus members was that Singing Hills, once matured, will be one of the best courses in the south. Certainly it is hoped the section will be invited back – not only to try our hand again on the existing 18, but to sample the new nine holes, opened in August.

The morning round was sponsored by Farmura, with Jim Coppin in attendance to present the prizes: Results – 1st Stefan Antolic, 2nd Les

## Around the Green



Shrubb, 3rd Bruce Cruickshank. Trade & Guests: David Eastland.

The afternoon Stableford got off to a better start, for not only had the weather improved dramatically but everybody was well satisfied with the superb lunch provided by the club. We tee'd off from both first and tenth, due to the popularity of the course, the round kindly sponsored by Turf Iron of Australia. Jim Coppin again presented the prizes, telling us also that he was leaving Farmura to join the Australian company – in order to fully pursue their interests in the UK – we wish him every success. Results: 1st Martin Broomfield, 2nd Chris Allen, 3rd Roland Hughes. There was a special prize for Steve Voguls, who came in with just one point. As they say, 'it's the taking part that counts.'

The section is indebted to Singing Hills for their generous hospitality, with special thanks to Derek Howe and his staff (the caterers of three superb meals), and to Richard and his boys for all the effort put into the course -thank you.

Finally, we welcome Jon Budd, a new first assistant to George Barr at Ham Manor, and offer congratulations to Dave Ranger on his new appointment as head greenkeeper at Horscham Park GC.



MARK WILTON

#### NORTH WALES

On 18 August a group from the North Wales section visited the Gem Professional factory in Oswaldtwistle, witnessing the process and production of top dressings, fertilisers, and many other products made at the Gem factory. On behalf of those who made the journey, our thanks to Terry Adamson for organising the trip (especially the coach!), and to John Harris and Andy Hardy, for their hospitality and for providing an excellent and interesting tour. Also a big thanks to the coach driver for a most enjoyable journey.

In December (date still to be decided) we

will be holding our Christmas competition at Llangollen GC, so once again, when these forms come out, get them filled in and sent back as soon as possible – don't forget the entrance fee!

With winter nearly upon us we hope to organise seminars for the winter period. We would also like to present a first aid course at Northop College, but as you will appreciate, we need to



know how many people are interested before we set a price and date. Please, if you have an interest in first aid, give me a call on 0248 713490.

DAVID PROCTOR

#### MID ANGLIA

The Autumn Tournament will again be staged at Woburn G&CC, this year on 26 October. The format has been changed slightly to accommodate our AGM – with 18 holes in the morning, followed by lunch, the AGM itself being held in the afternoon. The meeting will start at 3.00 pm approx., though this time may be altered depending on starting times for the golf. Because of the slight delay in confirmation of this event, entries will be accepted until 15 October – by form only and with cheque – to Chris Brook.

By the time you read this column the Lodge-way Four-Ball final will have been played – over 27 holes at Brocket Hall GC. Results will be published in November. The semi-finals produced the following results: D Low & A Freeman (Northants County) beat I Oliver & D Croxton (Cold Ashby). P Lockett & R Coogan (South Beds) beat R McKeown (Arley) & K Bunting (Ashridge). David Low and Tony Freeman were eventual winners over the Cold Ashby pair, but it took an incredible 40 holes of golf to separate them! Thanks to Chas Ayres for again organising the event and to his company – Lodgeway Tractor Co – for its continued support.

One piece of news concerns David Murphy, who many of you will know as the rep for Sta-Brite. David has left to join a fairly new company – Driving Force Leisure – which started last year. Good luck David.



PAUL LOCKETT

## EVENTS DIARY

- October 10-11: Toro/PGA European Tour Student Greenkeeper of the Year Award, Aldwark Manor.
- October 12-13: Kubota Challenge, The Belfry, Sutton Coldfield, Warwickshire
- November 4-5: Irish Golf Greenkeepers Association Trade Exhibition, Ballsbridge, Dublin.
- December 6-7: ICI Premier Greenkeeper of the Year Award, Aldwark Manor.
- January 19-21, 1994: BIGGA Turf Management Exhibition (BTME), Trade Show and Educational Seminar Programme, Harrogate, North Yorkshire.
- February 4-7: GCSAA Conference and Show, Dallas, Texas
- March 5-8: Canadian Turfgrass Conference and Trade Show, Calgary, Alberta.

**Britain's  
leading  
Top Dressing  
supplies**

**PRICES  
HELD FOR  
1993**

## All Seasons Dressings

Top Dressings • Sands • Top Soils • Fern Soil.  
Suppliers of Soils for Golf Courses.

**TOP DRESSING**  
Grade 1, 2, 3 to a  
high specification

**ROOT ZONE MIX**  
Individual mixes  
USGA  
specification,  
Lime free sands  
used

**SCREENED SOIL**  
3mm and 6mm  
Screened soil for  
divoting and  
construction.  
Naturally organic

**SANDS**  
Free draining.  
Lime free sands  
for bunkers and  
top dressings

**CONSTRUCTION**  
Tee and Green  
construction  
undertaken by our  
own professional  
tradesmen

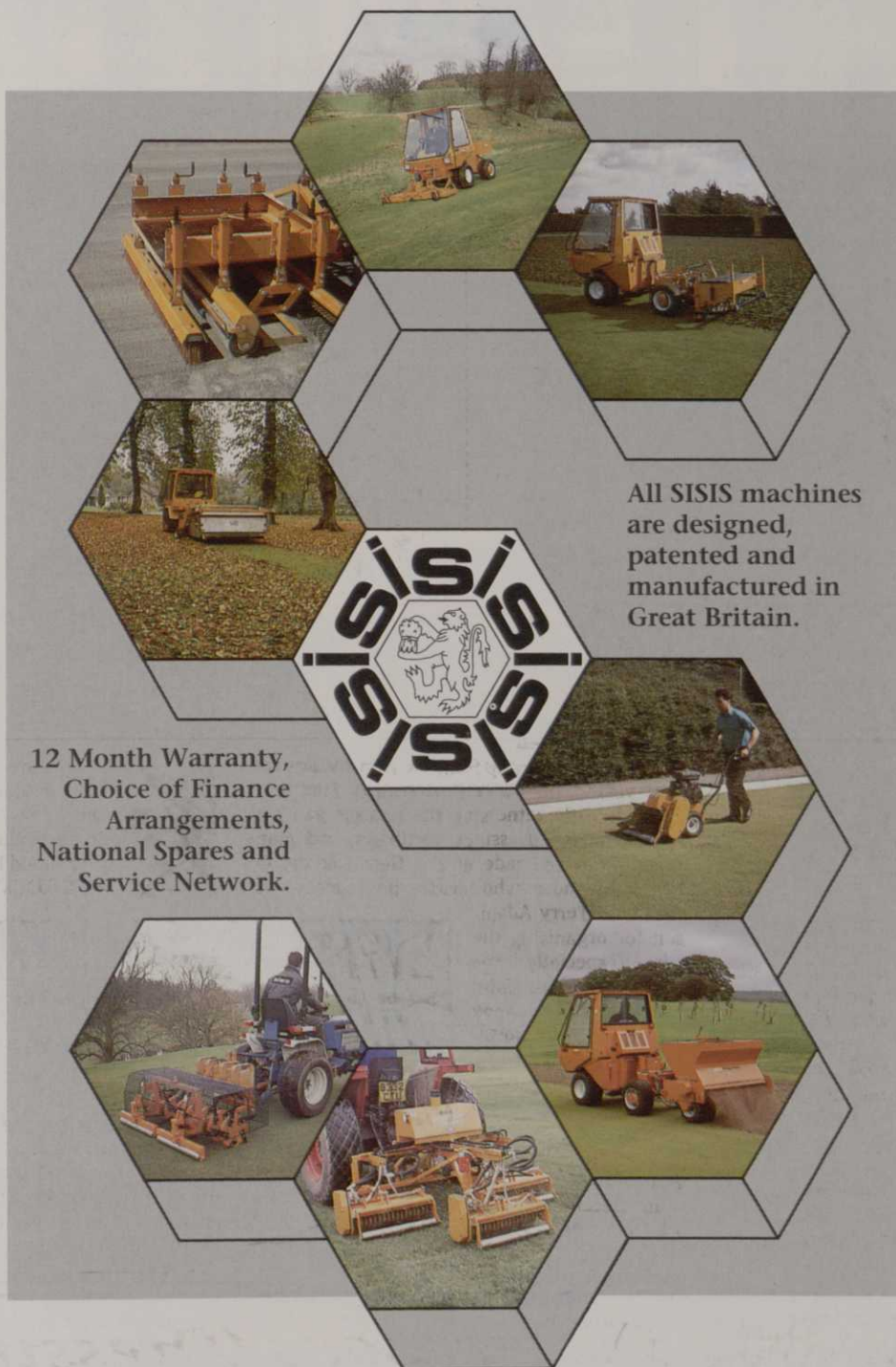


We at ALL SEASONS DRESSINGS have researched long and hard to achieve a Top Dressing to a very high quality product. All our soils and sands are tested by local agronomists and chemists to obtain the best results for your greens and tees.

119 London Road, Kingston upon Thames, Surrey KT2 6NH.  
Telephone: 081 546 3960 • Mobile: 0831 871939 • Fax: 081 547 1923



# POWERFUL



All SISIS machines  
are designed,  
patented and  
manufactured in  
Great Britain.

12 Month Warranty,  
Choice of Finance  
Arrangements,  
National Spares and  
Service Network.

# PERFORMERS

SISIS Equipment (Macclesfield) Ltd., Hurdsfield, Macclesfield, Cheshire SK10 2LZ Tel: (0625) 503030 Fax: 427426

SISIS Centre in Scotland, The Roundel, Middlefield Ind. Estate, Falkirk FK2 9HG Tel: (0324) 29635 Fax: 32894  
SISIS INC 4827 Phillips Highway, Jacksonville FLORIDA 32207, USA



# *What's in a* **NAME?**

**R**ufford No.1, No.2, No.3 and  
now Super 1742 topdressings

**U**niform particle size

**F**ine soil and silica sand

**F**ree draining, lime free sands

**O**rganic screened and shredded soil

**R**oot zone mixes which can  
meet USGA specification

**D**elivery within 48 hours

## **THAT'S WHAT'S IN OUR NAME**

For more information on the Rufford range of Topdressings and Rootzones, contact:

**Rufford**

TOP-DRESS SUPPLIES LTD

FAIRWAY HOUSE  
BROADWAY  
SALFORD QUAYS  
MANCHESTER  
M5 2UQ

**TEL: (061) 877 8550**

**FAX: (061) 877 8554**