

YOUR OFFICIAL GUIDE TO 1993'S PREMIER EVENT



BTME

BIGGA Turf Management
Exhibition and Seminar
Programme 1993



BIGGA TURF MANAGEMENT EXHIBITION

CATALOGUE

January 20-22, 1993

BTME is open from 9am on all three days. It closes at 5.30pm on Wednesday and Thursday and at 1.30pm on Friday.

Entry to the Exhibition is free but unless you have pre-registered, you will need to complete a registration card. Visitors who have pre-registered will be handed their identification badge at the door.

Please note that registration will be suspended for ten minutes from 10.10am on Wednesday January 20, to allow for the arrival of The Duke of York. You are strongly advised to arrive early to avoid any inconvenience.

Organisers' office is on the left hand side of the entrance hall.

Press/Product Launches

These will take place throughout the Exhibition at the end of Hall B. Information sheets will be available on the appropriate days. The Press office is also situated at the end of Hall B.

Photography

Nicholas Fisher, of Expo Photo (0629 825804), will be on hand to provide photographic coverage throughout the Exhibition.

Safety

Fire exits are marked and shown on the Exhibition Plan, Pages 30-31.

Educational Seminar Programme

Workshop sessions will be held in the Old Swan Hotel whilst the general Seminar Programme running concurrently with the Exhibition, will be held in the Royal Hall - entrance from Hall C.

The Old Swan Hotel

Venue for pre-Exhibition workshops and designated as Exhibition and Conference hotel. BIGGA hospitality room will be open in the evenings for exhibitors and delegates.

Dates for your diary

March 26-28: BIGGA National Education Conference, University of Keele, Staffordshire

April 28: Westurf Trade Exhibition, Long Ashton, Bristol

July 15-18: The 122nd Open Championship, Royal St Georges, Kent

August 2-4: BIGGA National Golf Tournament, Dunbar Golf Club, Scotland



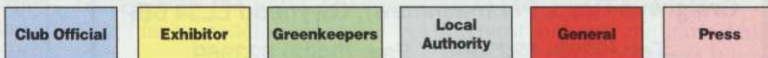
Welcome to the Show!

Come and see the
BIGGA team on Stand C15



Identification badges

These are colour coded to differentiate visitor classification and are as follows:



Your at a glance guide to all that's going on

Two-Day Educational Workshops

10.00 hrs - 12.30 hrs : 14.00 hrs - 16.30 hrs

THE OLD SWAN HOTEL, HARROGATE

Monday and Tuesday, 18th and 19th January 1993

Workshop 1

THATCH AND COMPACTION

Course Tutor: Professor R N Carrow, University of Georgia

This workshop will cover the topic of soil compaction and thatch. Sections will include effects on soils, plants, management programmes and alleviation by traffic control, cultivation and chemical/physical soil modification.

Workshop 2

Day 1: HEALTH AND SAFETY AT WORK 1993 - GETTING IT RIGHT

Day 2: THE ENVIRONMENT PROTECTION ACT

Course Tutors: Jon Allbutt & Associates

Information of vital importance awaits the Course Manager and Secretary at this Workshop. The HSW Act is currently undergoing its most radical update since it was introduced in 1974. EC directives and other influences now place more responsibility on the employer to be more active in implementing policies and taking action over Health and Safety at work.

Workshop 3

FROM GREENKEEPER TO COURSE MANAGER 'THE ESSENTIAL SKILLS'

Course Tutors: Frank Newberry and Paul Whiteley

This two-day course is designed to help greenkeepers learn the management skills which will assist them in their everyday environment whether it be on the golf course or in the committee room. Two specific areas to be covered are written and verbal presentations to Committee.

Workshop 4

THE PRINCIPLES AND METHODS REQUIRED TO ACHIEVE THE ULTIMATE GOAL OF ALL YEAR ROUND GOLF

Course Tutors: Jim Arthur, Barry Cooper, Brian Pierson

This Workshop will cover in depth all aspects of course management and construction aimed at achieving all year round playability, of which the most important of a number of aspects which will be discussed is efficient drainage without loss of nutrient and moisture retention, to produce healthy hard-wearing turf.

Wednesday, 20th January 1993

THE ROYAL HALL, HARROGATE

10.30am

OPENING CEREMONY AND PRESENTATION OF INDUSTRY AND EDUCATION AWARDS

HRH The Duke of York and Viscount Whitelaw

SEMINAR PROGRAMME SESSION A

11.00 - 12noon

KEYNOTE ADDRESS

Colonel John Blashford-Snell, MBE

1.40 - 2.10pm

THE LAYMAN'S VIEW ON BUILDING A USGA SPECIFICATION GREEN

George Barr, Course Manager, Ham Manor Golf Club

2.10 - 2.40pm

ROLE OF THE COURSE MANAGER WHEN A NEW IRRIGATION SYSTEM IS BEING INSTALLED

Bill Montague, Superintendent, Oakwood Golf Club, Cleveland, Ohio - First Overseas Master Greenkeeper

3.20 - 3.50pm

FINANCE - WHAT ARE THE OPTIONS?

Keith Jaynes, NMB Farm Finance

3.50 - 4.20pm

AERATION AND THE GOLF CLUB MEMBERS

Bob Lupton, Course Manager, Cleckheaton Golf Club

QUIZ NIGHT

8.30pm at the Old Swan Hotel.

Thursday, 21st January 1993

SEMINAR PROGRAMME SESSION B

9.30 - 10.00am

GOLF - 365 DAYS A YEAR!

John Millen, Course Manager, Weald of Kent Golf Club

10.00 - 10.30am

COMPUTERS IN GOLF COURSE MANAGEMENT

Kerran Daly - Master Greenkeeper - Course Manager, Salisbury & South Wilts Golf Club

11.10 - 11.40pm

STAYING ONE STEP AHEAD OF THE LAW: ACTION PLAN FOR A RISK ASSESSMENT

Jon Allbutt, Health and Safety Consultant

11.40 - 12.10pm

SETTING UP A NEW AMERICAN STYLE DEVELOPMENT IN BRITAIN

Martin Jones, Course Manager, The Oxfordshire Golf Club

EUROPEAN FORUM

12-2pm at the Old Swan Hotel. The first ever European Forum aimed at ascertaining the needs of greenkeepers throughout Europe.

SEMINAR PROGRAMME SESSION C

1.40 - 2.10pm

GREENS MANAGEMENT - BACK TO REALITY

David MacIndoe, Course Manager, Killarney Golf and Fishing Club

2.10 - 2.40pm

THE BENEFITS OF ENGAGING A GOLF COURSE ARCHITECT

Simon Gidman, British Institute of Golf Course Architects

3.20 - 3.50pm

GRASS CUTTING TO COST CUTTING

Richard Barker, Course Manager, Kirby Muxloe Golf Club

3.50 - 4.20pm

HOLD YOUR HEAD UP HIGH

Jane Ryan, Assistant Greenkeeper, Abbeydale Golf Club

EXHIBITION BANQUET

and Wayne Dobson cabaret, Old Swan Hotel 7.30 for 8pm

Friday, 22nd January 1993

SEMINAR PROGRAMME SESSION D

10.00 - 10.45am

GREEN CONSTRUCTION - THE EUROPEAN STANDARD

Dr Steve Baker, Sports Turf Research Institute

10.45 - 11.15am

THE REDEVELOPMENT OF A GOLF COURSE

David Jones, Area Course Manager, Country Club Hotels

11.15 - 11.45am

ANALYSIS A FALLACY?

Jim Arthur, Consultant Agronomist

BEV GOLF EQUIPMENT



See us on Stand B36 at BTME

Graiglwyd Road, Penmaenmawr, Gwynedd LL34 6EP

Tel: (0492) 622309 Fax: (0492) 623969

AD REF 391

Speaker profiles

Enjoy



Simon Gidman, one of the young tigers of golf course architecture, is well qualified to discuss **The**

benefits of engaging a golf course architect, having been involved in the business for some ten years and more recently gaining full membership of the British Institute of Golf Course Architects. Simon first entered golf as an assistant professional at Gerrards Cross GC, retaining his 'pro' status until 1979, when he attended Leeds Polytechnic until 1982 to study Landscape Architecture. From 1983 he worked as a self employed consultant at Hawtree & Co and during that time worked on many golf courses both private and public in Britain and abroad.

Courses for which he has had primary responsibility, both in terms of planning, design and contract supervision include the Seedy Mill GC, Sandford Springs GC, West Hove GC, Salisbury & S Wilts (extension), and the prestigious Puckrup Hall Hotel course at Tewkesbury.



Richard Barker is well known to readers of **Greenkeeper International**, playing a multi-faceted role in the develop-

ment of the Association through his chairmanship of the East Midland section, his just announced appointment to the committee of the Midland region and his launch into greenkeeping 'stardom' as an award winner in the 1991 ICI Premier Greenkeeper of the Year awards.

Apart from his 'serious' work,

Richard has achieved high honours in the game of golf and has on numerous occasions been seen taking the giant's share of silverware at BIGGA tournaments.

Since 1988 he has been head greenkeeper at Kirby Muxloe GC, near Leicester, and it is from his experiences at Kirby Muxloe that he presents his talk on **Grass cutting to cost cutting**, a paper that will outline several important aspects in the preparing and monitoring of a golf course budget and its subsequent presentation to the club treasurer – valuable ammunition.



David MacIndoe began his career under the expert guidance of Jack McMillan, cutting his metaphorical golfing teeth on

the fine turf of Cardross, Scotland. At the age of just 20 he won recognition by becoming the head greenkeeper at Kingshorpe GC, Northampton, following this with similar posts at Kingsdown GC and the West Herts GC. Throughout all this time David was the most active of committee men, serving on the executive committee of BGGGA, on the board of management of EIGGA and chairing the London branch for both BGGGA and EIGGA.

Ireland beckoned in 1984 and he became course manager at the exquisite 36 hole Killarney Golf and Fishing Club, a club that has played host to the Carrolls Irish Open in both 1991 and 1992. We know David as a man with essentially practical views and we are sure that seminar participants will enjoy listening to his discourse on **Greens management – back to reality**, a thoroughly intriguing title.

Pattisson

GOLF COURSE EQUIPMENT AND TURF MAINTENANCE MACHINERY MANUFACTURERS

**Winter Tee mats
1.5mtr x 1.5mtr, from
£177.00 plus VAT
Steel framed Tee units
with deep pile strike
mats, from
£273.00 plus VAT**

Carriage is chargeable in some areas.

See us on Stand B24 at BTME

Pattisson



H. Pattisson & Co Ltd

342 Selbourne Road, Luton, Beds LU4 8NU
Tel: 0582 597262 ♦ Fax: 0582 505241

AD REF 35



a wealth of experience

Kerran Daly is the course manager at Salisbury and South Wilts GC., as well as being one of the select handful who has achieved Master Greenkeeper status. He's a Scot by birth and breeding but with the unusual distinction of having only ever worked on golf courses in the south of England – rare indeed!

Always an active member of BIGGA, Kerran has held various positions within the committee structure, including chairmanship of the Sussex section. More recently he has been elected as the regional board representative for the South Coast section, expressing his main interest as that of advancing greenkeeper education. On that front, Kerran will address the Harrogate audience on the subject of **Computers in golf course management**, with a vow that he will refrain from mentioning *Poa annua*, *Pennecross*, 'The Way Forward', *Fusarium*, Take all patch or any other such taxing subjects, this for a full thirty minutes!



John Millen is the envy of many of his colleagues, a course manager who has achieved a lifelong ambition, that of designing and constructing a golf course from scratch. His course, however, is not one of the umpteen million pound wonders that swallow profit and bruise credibility, rather it is an essentially practical play-every-day layout that will

take heavy traffic, despite its clay based soil. This has been achieved at a cost of just £700,000 and from the very beginning has shown a healthy profit and attracted great acclaim – creditable indeed.

John practices what he preaches and will pose for discussion the premise that **Golf – 365 days a year!** is no pipe dream, rather an eminently achievable target for those who seek to provide year round play on a full course at reasonable cost, coupled with true, firm greens and mud free fairways.



George Barr has much to be proud of, managing as he does the delightful Ham Manor course, undoubtedly one of Harry Colt's finest. At the back of George's mind, however, there had long been a nagging feeling that the eighteenth green at 'The Ham' had somehow not survived in quite the same way as Harry's seventeen other gems, often playing in an uncharacteristic manner. With unbounded enthusiasm and a modicum of guidance from the experts, George photographed the green, took meticulous measurements of every contour and idiosyncrasy and then proceeded to lift the turf and rebuild the entire green to USGA specifications. His talk, **The layman's view on building a USGA spec green** will make fascinating lis-

tening, with the ghost of Harry Colt, I fancy, nodding approval.



Martin Jones started in greenkeeping as a result of summer work whilst studying maths and engineering. During a period spent on the Southend Parks Department course, he decided that his future lay in golf course management. Positions at Saffron Waldon GC and Tadmerton Heath GC followed and he is currently responsible for growing in the prestigious Rees Jones designed Oxfordshire course near Thame.

His paper, **Setting up an American style development in Britain**, will highlight the differences between managing old and new courses and outline the techniques used during the establishment of an American style course.



Jane Ryan is secretary of the BIGGA Sheffield section and the glamorous half of Yorkshire's only husband and wife greenkeeping team, working alongside husband Paul at Abbeydale GC. She is rare in many respects in being not only a player of great merit, having competed at national level against the likes of Laura Davis and Alison Nicholas, but also a qualified greenkeeper with over seventeen years solid

experience and, above all, being foremost amongst the most dedicated of those whose cause it is to further the proud profession of greenkeeping. Speaking for the first time to a nationally assembled group, Jane's subject is one dear to our hearts – **Hold your head up high** – a *cri de coeur* that should not be ignored.

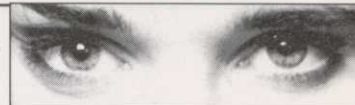


Bob Lupton worked at the STRI for four years before becoming a head greenkeeper, at the tender age of 19, at Baildon GC. After six years he moved to a second head greenkeeping post, this time at West Bradford GC, and eight years later moved to his current job, that of course manager at Cleckheaton, where he has been in charge for some five years. Bob is a high profile BIGGA personality – a lifelong member, currently the Northern region administrator, a committee member of the Northern section and a former chairman, secretary and treasurer. In addition he has also worked on the Turfgrass Advisory Committee and the Askham Bryan College Liaison Committee.

There can be none in the profession who doubt the value of aeration, though his subject for discussion, **Aeration and the golf club member**, will no doubt open up a whole new vista on the thorny problem of keeping the customers satisfied by keeping them informed.

Guide to exhibitors

Who to look out for...



ADAS - Stand No. A2

Wrest Park, Silsoe, Bedford MK45 4HS
Tel: 0525-860077 Fax: 0525-861813
Contact: A Redrup

The ADAS exhibit will highlight a comprehensive range of consultancy services to enable golf and other sports clubs to maintain and improve current facilities so that usage can be increased and deterioration of playing conditions avoided. ADAS consultancy services are completely independent and objective. Our highly professional team of specialists includes architects, civil and structural engineers, drainage and irrigation engineers, meteorologists, agronomists, ecologists, woodland experts and business advisers. All services are supported by in-house laboratories able to undertake tasks such as pest and disease identification or soil, material and water analysis. We use the latest techniques and equipment such as aerial photography and computerisation.

AGRILAND LTD - Stand No. B4

Blue Roof Farm, Throop Road, Bournemouth, Dorset BH8 0DW
Tel: 0202-532291 Fax: 0202-535224
Contact: L Linehan/T Le Mesurier

Agriland's amenity range is getting well established north of Watford, so here we are in Harrogate for the first time. Our show features Agrimaster, Agricrop, Ferrogreen, Classic Liquid Fertilisers, Multi-Purpose Wetter and Seaweed meal soil conditioner - plus a brand new product never seen in public before. Friends and spies are welcome on stand B4.

AITKENS SPORTSTURF LTD

- Stand No. A46

Unit 18 Moor Lane Trading Estate, Sherburn-in-Elmet, North Yorks LS25 6DX
Tel: 0977-681155 Fax: 0977-684636
Contact: Peter Fell

Suppliers of fertilisers, pesticides, grass seeds, top-dressings, sands, line marking machines and material. Sports equipment, ground equipment tools to the sports turf industry and amenity market in England and Scotland.

ALLEN POWER EQUIPMENT LTD

- Stand No. A28

The Broadway, Didcot, Oxon OX11 8ES
Tel: 0235-813936 Fax: 0235-811491
Contact: Lance Bassett

Allen Power Equipment will be exhibiting the Allen National 68 Triple Mower, a machine operated by hundreds of golf clubs throughout the UK. Plus the Reciprocator and Reciprocating Edger, two machines for cutting and edging in complete safety to bystanders, the operator and the machine. The Reciprocators do away with the principle of high speed blades, and will even cut under water. Also on display will be the Allen Walkover range of sprayers and the Allen Mustang All Terrain Mower, a 42" cut machine that can be used to cut in the most inaccessible areas including steep slopes.

ALLETT MOWERS - Stand No. B42A

60 Burckett Road, Earlstrees Industrial Estate, Corby, Northants NN17 2DT
Tel: 0536-68950 Fax: 0536-201856

◆ *The Icemen cometh...* News has just reached us that a ten man greenkeeper delegation from the Golf Union of Iceland will be attending the BTME, specifically to see the great progress that has been achieved in machinery and golf course maintenance equipment. Even more encouraging, they plan to attend many of the BIGGA educational workshops and seminars, returning home to put into practice the new techniques and ideas that will come from such exposure.

In a letter to BIGGA HQ, we learned that Iceland has some 40 golf courses, cared for in the main by men who have little or no formal greenkeeper training. Climatic conditions mean that golfers can play only during the summer months, and they are plagued with the well known difficulties of *Poa annua*, moss and other undesirable turf invaders. This is a situation that the GUI plans to tackle and it is encouraging to learn that there are plans afoot also to form an Icelandic Greenkeepers Association, with the GUI seeking guidance from our own Association.

Two Icelandic greenkeepers are currently undergoing formal training, one at Elmwood College in Scotland, the other in Canada. It is from these humble beginnings that fine associations are formed and we are delighted to welcome them to our shores. Lest you think that Iceland is backward in golfing terms, we are informed that Iceland's golfers are the current Nordic Champions, having beaten Sweden, Denmark, Finland and Norway in 1992, under the expert coaching of ex-Ryder Cup player, John Garner.

Contact: David Allett

On display on the Allett Mowers stand will be three machines specifically designed for greenkeepers. The Allett Conqueror is a ride on triple mower for use on tees and surrounds. The machine benefits from hydrostatic transmission and is therefore very manoeuvrable. Unique for a machine in this price range, the Conqueror has individual clutches for all 3 cutting units giving a choice of cutting widths of 78", 57" or 36". The machine is powered by an 11hp electric start command engine with a pressure lubricated system for prolonged use on banks. Also on display will be two pedestrian greens machines. The Tournament incorporates a power driven spiral brush fitted between front roller and cylinder which brushes the turf, lifting any lateral grass, for a much better quality of cut and at the same time it brushes the front roller to keep it clean and so maintain a consistent height of cut. The Shaver is a similar machine but with an optional static brush. Both machines give 180 cuts per yard and a finish which is unequalled.

AMENITY POWER (GRASSBLADES PUBLISHING) - Stand No. B41

Baranite House, 13 Whitehorse Street,

Baldock, Herts SG7 6QB

Tel: 0462-892608 Fax: 0462-490066

Contact: Roland Taylor

Amenity Power is a monthly machinery magazine for everybody involved in the grass machinery and outdoor power equipment industry. For greenkeepers, course managers, club secretaries and green committee members, the magazine provides comprehensive information on grass cutting equipment plus all other machinery used in the maintenance of a course. The information carried in Amenity Power throughout the year is of considerable benefit when those important buying decisions have to be made. Regular monthly features on new products keep our readers abreast of the latest developments, whilst informative articles of a practical nature are designed to help all those who use equipment. Buying, selling or looking for machinery? Amenity Power's classified section is the answer. To make sure you personally receive a regular copy, visit us on Stand B41 where we will be delighted to meet you.

ASKHAM BRYAN COLLEGE

- Stand No. C27

Askham Bryan, York, North Yorks YO2 3PR
Tel: 0904-702121 Fax: 0904-702629

Contact: Nick Bisset

Askham Bryan College is the centre approved by the Greenkeepers Training Committee for the North East and East Midlands areas for all levels. A series of courses have been developed in consultation with the County Golf Unions and Greenkeepers Association in the region. The courses are therefore designed to fit career training at all levels from new entrants to aspiring managers. The courses are offered on a "block release" basis, with accommodation if required. Each course consists of a series of one week blocks spread over the year. Short courses on specific topics can be arranged as required, the college also offers full time and part time course in Agriculture, Horticulture, Gamekeeping, Floristry, Business and Finance, Equestrian Studies and Forestry.

ATTERTON & ELLIS - Stand No. A8

Iron Works, Hamley Road, Haverhill, Suffolk CB9 8QH

Tel: 0440-702312 Fax: 0440-712138

Contact: David Smith

For over 100 years, Atterton & Ellis have led the field with their innovative range of grinding machines. Their market leading EXPRESS DUAL, offering accurate grinding of cylinders, both in-situ and with the cylinder removed, has become the standard for precision grinders today. The 'Professional' model allows an even greater range of cutting units to be sharpened in-situ. Bottom blades get the same precision treatment from the Atterton ANGLEMASTER, a heavy duty bottom blade grinder that features power traverse. Both will be shown at Harrogate - both are chosen by many of the leading golf courses in the UK - both carry the Atterton hallmark of quality, reliability and a personal back-up service that has kept them ahead for over a century.

BAILEYS OF NORFOLK - Stand No. A35

Brick Kiln Road, Hevingham, Norwich,

Who to look out for...



Norfolk NR10 5NL
Tel: 060-548 607 Fax: 060-548 607
Contact: Alan Bailey

Olympian Range of root zone mixes and top dressings. Tested and approved by the STRI, Baileys have a string of testimonials from head greenkeepers and course managers, praising the fertility and consistent growing profile of grasses where they have used Olympian products. Samples of the range and friendly professional advice will be available at our stand. We have millions of cubic feet of rich Black Norfolk Fen Soil – the essential proven ingredient of the Olympian range – sufficient to guarantee customers with the finest quality mixes and dressings for at least two decades.

BARENBRUG UK LTD – Stand No. A44

PO Box 2, Rougham Industrial Estate, Bury St Edmunds, Suffolk IP30 9NW
Tel: 0359-70766 Fax: 0359-71-21
Contact: Michel Mulder

Both British and overseas visitors to the Barenbrug stand at BTME will feel at home as the products they'll find are widely known and used throughout the European Community. To satisfy the entire needs of the golfing greenkeeper, Barenbrug will be displaying many of the highly rated grass seed varieties carefully bred for applications as diverse as the smooth, close mown surface of a green to the high wear resistance and rapid self repairing properties demanded on a golf tee. Amongst the high quality varieties the greenkeeper will be able to examine are: BARCROWN – an exceptional new slender creeping red fescue, BARDOT – a highly acclaimed brown-top bent and BARUBA – an excellent new chewing fescue. These varieties are constituents of mixtures marketed by Barenbrug and widely used both in the UK and across Europe.

BELL IRRIGATION – Stand No. A12B

Everton, Doncaster DN10 5DR
Tel: 0777-817410
Contact: Mr or Mrs Bell

BETTER METHODS-EUROPE

– Stand No. A37

Brantwood House, Kimberley Road, Parkstone, Poole, Dorset BH14 8SQ
Tel: 0202-740142 Fax: 0202-722300
Contact: Richard Horner

Several new items from Better MethodS will be exhibited in Harrogate for the first time. These include a new club cleaner and tools for soil sampling and core removal. Also on display will be a selection of our popular turf care tools and golf course accessories. These will include some large capacity, heavy duty golf ball washers, solid resin tee markers that do not chip or break, plus golf hole cups, cup pullers and setters. The official USGA Stimpmeter, which is becoming increasingly popular with greenkeepers as a reference tool for regulating green speeds is also featured. Call at our stand to see all these items and more and collect our latest catalogue.

BEV GOLF EQUIPMENT – Stand No. B36

Graiglwyd Road, Penmaenmawr, Gwynedd LL34 6EP

Tel: 0492-622309 Fax: 0492-623969

Contact: Brian Evans

To get "something for nothing" these days is just about impossible except when dealing with BEV, the refurbishment specialists. BEV offer to golf clubs throughout the UK, tee markers and all other "on course" equipment, completely "free of charge". This prestigious equipment, is manufactured and supplied by BEV to many courses, both municipal and private with the cost being nil. The benefits to the club are obvious. This year a new range of goods go on display at Harrogate but it will all remain completely "free of charge". Clubs are advised to put in orders for this free equipment quickly as 1993 will be BEV's busiest year so far. "It's all free with BEV."

BLAZON EUROPE – Stand No. B23

24 Badgers Court, Langdon Hills, Basildon, Essex SS16 6AU
Tel: 0268-413798 Fax: 0268-416434
Contact: Richard Fry

Blazon spray pattern indicator is the only non staining colourant for use on turf and non crop vegetation. When added to the spray solution of pesticides, liquid fertilisers, wetting agents and other sprayable turf maintenance products Blazon eliminates spray overlap and excessive use of pesticides, prevents mis-application and will identify at a glance blocked or faulty spray nozzles. Visitors to the Blazon Europe stand will be able to discuss at first hand how to substantially reduce chemical costs, enter a draw to win a free official BIGGA on-course work hat and learn of the new Blazon developments for 1993.

Come and meet
BIGGA's Sales & Marketing Manager

BILL LYNCH

On Stand C15
BTME – THE PLACE TO BE SEEN!



BRACKENHURST COLLEGE

– Stand No. C24

Southwell, Notts NG25 0QF
Tel: 0636-812252 Fax: 0636-815404
Contact: B W Osborne

National Certificate in Horticulture, Greenkeeping and Sportsturf Management – this is a one year full-time course for students wishing to specialise in the Sportsturf industry, the course is highly practical in nature and the theory lessons relate very much to these practical techniques. Also included is tuition in management skills and information technology.

- BTEC 1st Certificate – a one year full-time introductory course into the Horticultural industry for the school leaver, covering a broad based skills learning area and more special horticultural skills modules.

- National Vocational Qualifications – Levels 1 to 4 – Brackenhurst College offers all available options in these industry based horticultural qualifications and is presently working with the greenkeeping industry introducing them into the workplace. Bespoke courses for industry – available at all times of the year from one element of a NVQ qualification through FEPA training, to a

complete skills or amenity management package. Brackenhurst College also offers courses in agriculture, agricultural supply merchandising, food technology engineering, agricultural machinery, floristry and equestrian skills.

BRITISH AND INTERNATIONAL GOLF GREENKEEPERS ASSOCIATION

– Stand No. C15

Aldwark Manor, Aldwark, Alne, York, North Yorkshire YO6 2NF

Tel: 03473-581/2 Fax: 03473-8864

Contacts: Neil Thomas, David Golding, Debbie Savage, Samantha Flint, Sue Gudgeon, Emma Duggleby; *Greenkeeper International*: Bill Lynch, Carol Dutton, David White

BIGGA welcomes all visitors to Harrogate once again. The Association is delighted to be organising the event which, in its fifth year, shows every indication of developing into the largest indoor Exhibition and Educational Seminar Programme throughout Europe. At the BIGGA stand you will be able to obtain all current BIGGA literature and be updated on developments within the Association. Details of membership of the Association will be available and for those so wishing there will be the opportunity to complete applications for membership whilst visiting the stand. Visitors should particularly note details of the Master Greenkeeper Certificate. The award of this certificate will indicate that recipients have achieved the highest standard of excellence within the profession of greenkeeping. Please ensure that you take a copy of the programme for the National Education Conference to be held at the University of Keele from 26-28 March, 1993. An eminent panel of speakers has been assembled with a wealth of greenkeeping knowledge and experience and delegates will greatly benefit by attending at this major three day educational event. The full range of BIGGA merchandise will be on sale and also details of the TRIMS Computer Software Package will be available – fast becoming a vital management aid for the progressive course manager. Please take a copy of 'Greenkeeper International' – essential reading for greenkeepers, golf clubs and the industry.

The Association's staff look forward to meeting you on the Stand, where much lively and informed discussion can be assured.

BRITISH AND INTERNATIONAL GOLF GREENKEEPERS ASSOCIATION

– NORTHERN REGION – Stand No. C29

Northern Region Regional Administrator: Bob Lupton, 23 Hinchcliffe Avenue, Baildon, Shipley, West Yorkshire

Tel: 0274-590463

The six Northern Region Section Secretaries will be available throughout the exhibition to deal with members enquiries relating to membership, section events etc.

BRITISH SEED HOUSES LTD

– Stand No. A20

Bewsey Industrial Estate, Pitt Street, Warrington, Cheshire WA5 5LE

Tel: 0925-54411 Fax: 0925-416676

Contact: Jonathan Franks

Who to look out for...



British Seed Houses Ltd have been privileged to supply all the grass seed for several major golf course projects during the past twelve months, including the new Oxfordshire Golf Club, designed by Reece Jones where Creeping Bents were sown extensively through the course. The company have also supplied all the seed for the Bowood House Golf Club in Wiltshire and Brocket Hall in Hertfordshire which were opened within twelve months of seeding where mixtures containing FRIDA Chewings Fescue gave excellent establishment. The company will be launching four new grasses next season, METEOR Turf Type Perennial Ryegrass, OLIVIA Chewings Fescue, JASPER Strong Creeping Red Fescue and PINTOR Hard Fescue all of which have been well rated by the Sports Turf Research Institute.

CB DESIGNS INTERNATIONAL LTD

- Stand No. B8

33 Station Road, Rickmansworth, Herts WD3 1QP

Tel: 0923-897160 Fax: 0923-710344

Contact: Christopher Boxall

CB Designs International specialise in the production of high quality tee signs which are custom made to the club's specific requirements. Products are manufactured in a variety of hard wearing materials including granite, slate, cast polymer,

bronze and aluminium. Custom made tee signs are either sold directly to clubs in the normal manner or provided free of charge with the inclusion of a sponsor's plaque. The type of sign and fixings still remains the club's choice even when provided at no charge. A "unique" all new tee marker is also being launched at the exhibition.

Come and meet
Advertising Sales Executive

CAROL DUTTON
On Stand C15
BTME - THE PLACE TO BE SEEN!



CMW EQUIPMENT CO - Stand No. A40

3 Priors Way, Coggeshall Industrial Park, Colne Road, Coggeshall, Essex CO6 1PW

Tel/Fax: 0376-562569

Contact: Mike Moss

CMW will be exhibiting a wide range of on course equipment and accessories. New this year will be a display of custom made signs. CMW now have the technology to produce signs to customers' own specifications, incorporating logos and graphics, at very competitive prices. Last year the easicut holecutter was introduced and has been very successful. During the year the reinforced

blades have been updated with added strength which should be of particular interest to greenkeepers with hole cutting problems. CMW will again be producing tee shirts and baseball caps to visitors' own designs. Bring your own logo or design to stand A40. That's where it will all be happening.

CANNINGTON COLLEGE - Stand No. C5

Nr. Bridgwater, Somerset TA5 2LS

Tel: 0278-652226 Fax: 0278-652479

Contact: Kristine Bater

Cannington College is the south west regional centre of excellence for greenkeeper training and the two golf courses, the pitch and putt and the international nine hole, offer unrivalled opportunities for developing these skills to the highest level. The college offers an HND in Golf Greenkeeping with European Studies (three year sandwich) National Diploma in Golf Greenkeeping and Sports Turf Management (both full-time and part-time study options) and City & Guilds Phase II and III in Golf Greenkeeping.

JOHN CHAPLIN (MACHINERY) LTD

- Stand No. C18/19

Roseville Road, Leeds LS8 5DT

Tel: 0532-459535 Fax: 0532-431938

Contact: Michael Chaplin



See us on
Stand A27
at BTME

Large or Small

Laying turf is not exactly child's play, but it is a lot easier with Rolawn.

Because our turf is precision cut, mature, purpose grown and available when you want it. Because you can choose standard, convenient square yard rolls or the extra big,

(25 square yard) rolls. We'll even lend you laying equipment for the big rolls so turfing large areas is quicker and more cost-effective than ever.

Because our chain of national depots mean a truly local service for collection or delivery.

Talk to our turf specialists on 0904 608661 and find out why more people use Rolawn than any other cultivated turf.

Rolawn[®]
Elvington, York YO4 5AR.



New products are to the fore from Yorkshire's longest established specialist distributor of professional ground maintenance machinery. The all new GMV grounds maintenance vehicle equipped with three way tipping body and integrated hydraulic drive system makes this the only "on course" maintenance system with the best quality operator comfort in the game. Top dressers, sprayers and aeration systems are available for use with this prime mover. In addition the range of new NCT cutting systems can be seen on the Baroness gang mowers, pedestrian greens mowers and the renowned Saxon triples, all of which are known for quality, reliability and low maintenance costs.

CLAYMORE GRASS MACHINERY

- Stand No. B25

Waterloo Industrial Estate, Waterloo Road, Bidford-on-Avon, Warwickshire B50 4JH
Tel: 0789-490177 Fax: 0789-490170
Contact: Nick Miles

Claymore will be exhibiting products from all three ranges distributed by them. With walk behind cylinder mowers and gang mowers manufactured by Greens, hopefully to include a new, more advanced mower for golf greens. There will also be a selection of products from Bolens including, mulching mowers, chipper/ shredders and the revolutionary chipper/vacs, new for this year and of course, ride on hydraulic cylinder mowers will be represented by Sabo Roberine, one of the leading and upcoming manufacturers in their field. Also from Sabo Roberine, there will be news of a new product specifically designed for the golf course market.

D & E TURF MAINTENANCE LTD

- Stand No. A11

St John's Schoolhouse, Central Parade, Shildon, Co Durham D14 1DL
Tel: 0388-608620

Contact: David Stephenson

Hollow coring of fairways, football and rugby pitches for thatch removal and material replacement has for many years been desirable but impractical as heavy duty coring and core harvesting machinery has not been available. To overcome this D&E Turf Maintenance have launched a contractor service of hollow coring with the TORO Fairway Aerator and core harvesting with the TRILO Vacuum Sweeper. This new service supplements the existing hire fleet of The Shelton Sand Groover a vastly underrated machine for linking surface water problems to the existing drainage systems, TORO Hydrojet 3000, 2.5m and 1.5m Verti-Drains. Also the TORO Greens Aerator which is now available with a core pulverisation facility, this has proved very popular with our Local Authority customers coring and pulverising bowling greens. First to introduce the TORO Hydrojet 3000 in the UK, the innovative nature of this well proven machine, now in its third season with ourselves, has become widely recognised and accepted, with both Rangers Football Club Ibrox Park and St. Andrews Golf Club Fife purchasing their own machines, two very diverse applications. We are now introducing BS5750 part 2 into our company although not widely recognised within the golf

clubs it is essential to give quality assurance to all our customers in our specialised field of heavy duty aeration equipment.

DONATH SEEDS - Stand No. B9

Priory Industrial Estate, Tetbury, Gloucs GL8 8HZ

Tel: 0666-502834 Fax: 0666-502401

Contact: Chris Hale

This year we will be introducing our new wild-flower mixtures for conservation areas on golf courses and DANILO the leading new amenity perennial ryegrass which will be available in our fairway mixture. We will be happy to help you with any queries you may have concerning hydroseeding on golf courses.

◆ *The Swedish Invasion...* With more than 700 members, the Swedish Greenkeepers Association is second only to BIGGA as the biggest greenkeepers association in Europe. No BTME would be complete without a mini invasion from our Swedish cousins, this year witnessing a bigger than ever contingent making the crossing, including every single member of the eight strong Green Section regional agronomist squad, specialists who visit every Swedish golf course at least once each year. BIGGA is certainly living up to its international reputation and we are thrilled to welcome again those ever popular Swedish invaders.

ELMWOOD COLLEGE - Stand No. C26

Carslogie Road, Cupar, Fife KY15 4JB
Tel: 0334-52781 Fax: 0334-56795

Contact: Carol Borthwith

At Elmwood we offer a wide range of courses for all greenkeeping staff from youth training to course managers. Choose from:

- NVQ/SVQ Level I course for greenkeepers (incorporating the new greenkeepers training manual)
- Block Release and Full Time National Certificate in Greenkeeping
- Distance Learning National Certificate in Supervisory Studies
- Distance Learning or Full Time or Day Release in our new Higher National Certificate in Golf Course Management
- Plus many more including a range a short courses

Flexibility is a key word in our education system. Come and see Mike Taylor and Carol Borthwith on Stand C26 to work out your training programme.

ENGLISH GOLF UNION - Stand No. C3B

1-3 Upper King Street, Leicester LE1 6XF
Tel: 0533-553042 Fax: 0533-471322

Contact: Neil Hayward

The English Golf Union are the governing body for mens amateur golf and are responsible for all aspects of the game in England. These include tournaments, membership, handicapping, rules,

golf development and administration. The Golf Development Department through their network of County Union Field Officers are available to advise and assist potential developers and to give guidance to local planning authorities on golf course development. The department have compiled the most comprehensive report on planning applications and are able to provide detailed information on all the various facets of the demand for golf.

HOWARD EVANS FINANCIAL SERVICES LTD

- Stand No. C2

13 The Rainbow Business Centre, Phoenix Way, Swansea Enterprise Park, Morriston, Swansea SA7 9EH

Tel: 0792-791179 Fax: 0792-797748

Contact: Howard Evans

Howard Evans Financial Services was set up on 1st November 1990, specifically to offer financial advice to all BIGGA members on pensions, mortgages and other related financial topics. As you probably know, Howard Evans has been offering financial advice to the BIGGA membership since August 1989 but the initiative has proved so successful that Howard has reorganised his activities to give even more time to answering the financial questions posed by BIGGA members. Howard Evans Financial Services is an Appointed Representative of Standard Life, possibly the UK's most respected investment, pensions and life assurance office and certainly the European Community's largest mutual life assurance company. Howard Evans Financial Services offers all BIGGA members free advice on the full range of financial topics, but retains a primary interest in ensuring that all members are making adequate contributions to an appropriate Pension Plan. In the last 18 months many greenkeepers have started contributing to a BIGGA Personal Pension Plan. Some are making contributions entirely on their own whilst others are having contributions made on their behalf by their Golf Club. Either way, we all know sensible financial planning for the future makes sense.

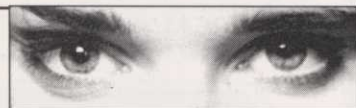
FARMURA LTD - Stand No. A38

Stone Hill, Egerton, Ashford, Kent TN27 9DU
Tel: 0233-76 241/581 Fax: 0233-76419

Contact: Mr J Harmer

Farmura Environmental Products are continuing to set the pace for innovative new turf products for the 1990s. At Harrogate, Farmura will display their reformulated Farmura Green and Porthcawl liquid organic fertilisers. On display for the first time will be Flo-Gro Super Concentrates packed in 10 litre containers with two and a half times the concentration of conventional liquids. They are a major step forward, being easier to transport, store and handle and using less packaging. The revolutionary Turf Iron already supplied to top clubs in the UK and abroad will be highlighted. With its ability to speed-up greens, reduce stress and restore surfaces following maintenance the Turf Iron is well set to become a "tool of the trade". With the winner of a trip to the GCSAA Show resulting from the Blazon Better Way to Spray campaign being announced, plus a major new launch, the Farmura stand will be an essential visit.

Who to look out for...



FENCHURCH NORTHERN - Stand No. C2
Bramley Business Centre, 533 Stanningley
Road, Leeds LS13 4DA
Tel: 0532-558400 Fax: 0532-570310
Contact: Andrew Lawrence

Fenchurch Northern act as Insurance Brokers to BIGGA and its members in respect of the insurance covers provided within the membership package. We also offer our professional services on any other insurance requirement, specifically to BIGGA members for personal insurances such as motor and household. The Fenchurch Group are national and international Insurance Brokers and, in addition to our expertise in arranging scheme and personal line insurances, are renowned for our expertise in arranging corporate commercial insurance for all areas of industry and commerce. Exhibitors wishing to discuss any insurance matters would be welcome at the Fenchurch Northern stand and should contact Andrew Lawrence.

FISONS PLC - Stand No. B3
Horticulture Division, Paper Mill Lane, Bramford, Ipswich, Suffolk IP8 4BZ
Tel: 0473-830492 Fax: 0473-830386
Contact: Gill Craig-Jarrold
Come to the Fisons stand for details of the Top-

master Turf Dressing range - new for 1993. The range comprises four new formulations TD1 to TD4, which promote healthy root development, and good colour in fine and sports turf. TD1 and TD2, rigorously tested by independent laboratories both in the UK and the United States, conform to the USGA specification. Information on Greenmaster and Sportsmaster will also be available together with our range of liquid turf fertilisers, chemicals and wetting agent. Examples of the new products and literature are available. Ask at stand B3 for details.

Come and meet
Greenkeeper International editor

DAVID WHITE
On Stand C15
BTME - THE PLACE TO BE SEEN!



FRASER GROWN LAWN PROFESSIONAL
- Stand No. B42B

Woodside Farm, Sandy Lane, High Kinnerton,
Chester CH4 9BS
Tel: 0244-660901 Fax: 0244-660468
Contact: Fred Trim
Fraser Grown Lawn Professional has a reputation built on quality, reliability and value for money,

which has led to us becoming a major supplier of turf. We have invested in the latest machinery available to produce, maintain and harvest the turf to the highest quality. Delivery is made by our own fleet of vehicles with crane off loading facilities or rear mounted fork lift for specific drops anywhere on site, which cuts down on time and labour for you. Dealing with a family run company like Frasers, means that our customers are always assured of personal service established 20 years.

GANNON UK LTD - Stand No. C9

Welbourn, Lincolnshire LN5 0QL
Tel: 0400-72475 Fax: 0400-72303
Contact: Derek Overton

Gannon will be exhibiting the Aera-Vator, a new concept in turf cultivation. The advantages are as follows:

- A. Superior penetration and aeration with less subsoil compaction than other aerators weighing twice as much.
- B. The burrowing motion produces a larger diameter hole with soft side walls for better absorption of air, water and nutrients.
- C. (No cores to clean up) Soil pushed out and around the hole is evenly spread by mowing.
- D. An excellent renovation tool for overseeding or laying turf.

IS YOUR BUSINESS GOLF?



OURS IS



See us
on Stand B20
at BTME with
T&G IRRIGATION
(Tel & Fax: 0765 602941)

Watermation
IRRIGATION SYSTEMS

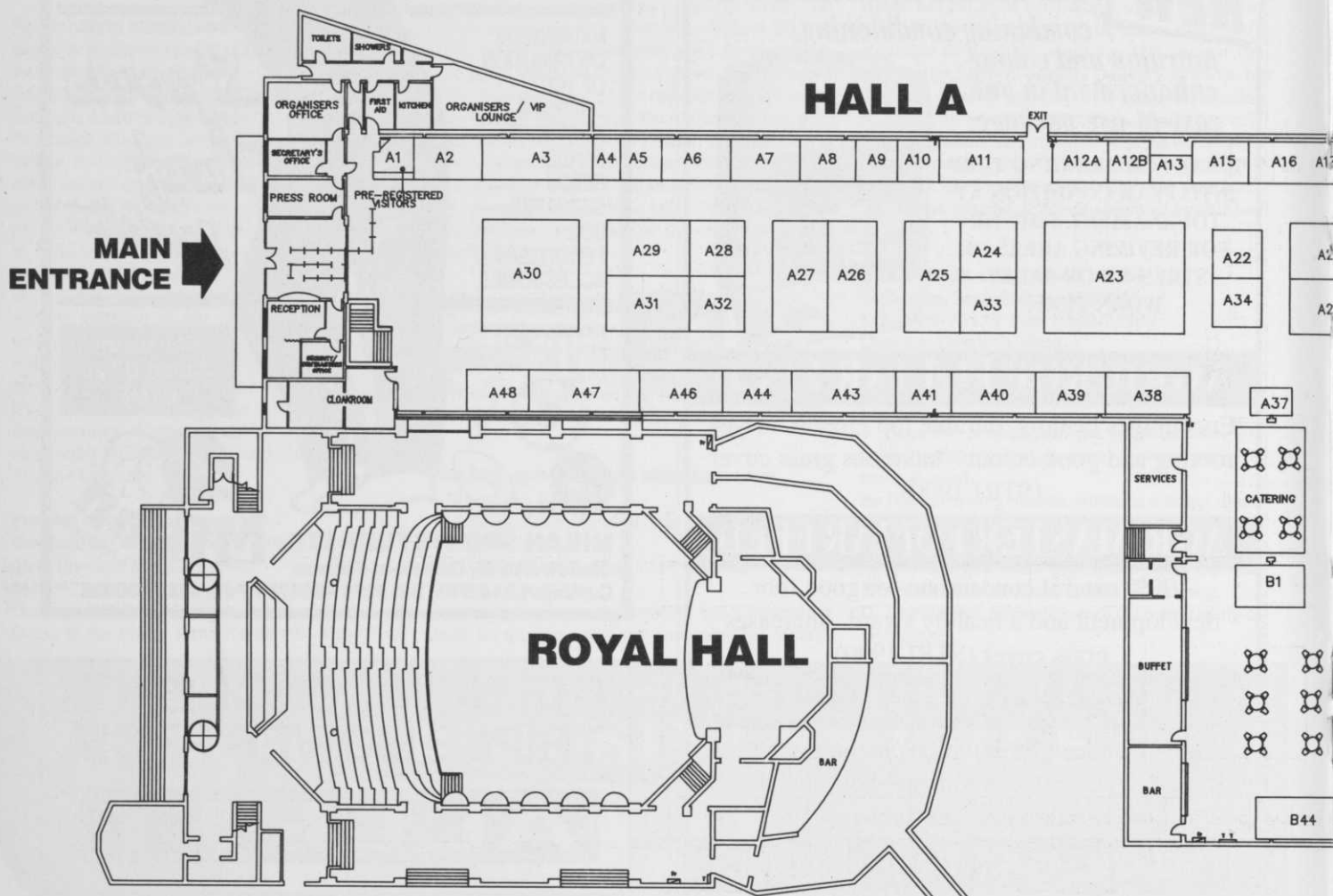
Tongham Road, Aldershot,
Hants, GU12 4AA, England
Tel: 0252 336838

Since 1970
Watermation irrigation
systems have helped to
create and maintain the top
championship golf courses
around Britain, Ireland,
Europe and worldwide.



BTME Exhibition plan

BIGGA Turf Management
Exhibition and Seminar
Programme 1993



Exhibitors by stand reference

HALL A

A1.....BIGGA PRE-REGISTRATION DESK
A2.....ADAS
A3.....I/C DISTRIBUTORS
A4.....HOLE-IN-WHITE (EUROPE)
A5.....SUPATURF PRODUCTS LTD
A6.....STA-BRITE SUPPLIES LTD
A7.....RHONE-POULENC ENVIRONMENTAL PRODUCTS
A8.....ATTERTON & ELLIS
A9.....SPORTS GROUND IRRIGATION
A10.....OTTERBINE AERATORS
A11.....D&E TURF MAINTENANCE LTD
A12A.....JOHN MCLAUCHLAN HORTICULTURE
A12B.....BELL TURF & IRRIGATION SERVICES
A13.....PROFESSIONAL SPORTSTURF DESIGN
.....ASSOCIATES
A15.....LANCASHIRE COLLEGE
A18.....MOORE UNI-DRILL
A20.....BRITISH SEED HOUSES LTD
A21A.....UNITED AGRI
A21B.....KUBOTA (UK) LTD
A22.....MODUS T LTD
A23.....LELY (UK) LTD
A24.....VITAX
A25.....HUXLEYS GRASS MACHINERY
A26.....MITCHELL INDUSTRIES GROUP
A27.....ROLAWN (TURF GROWERS) LTD

A28.....ALLEN POWER EQUIPMENT LTD
A29.....NETLON
A30.....RANSOMES SIMS & JEFFERIES
A32.....SUPREME MOWING
A33.....TURF MANAGEMENT
A34.....INTURF LTD
A35.....BAILEYS OF NORFOLK
A36.....WIEDENMANN (UK) LTD
A37.....BETTER METHODS-EUROPE
A38.....FARMURA LTD
A39.....RUFFORD TOPDRESS SUPPLIES LTD
A40.....CMW EQUIPMENT CO
A41.....MULTI-CORE AERATORS LTD
A43.....RIGBY TAYLOR LTD
A44.....BARENBRUG UK LTD
A46.....AITKENS SPORTSTURF LTD
A47.....HARDI LTD
A48.....GRACE SIERRA UK

HALL B

B1.....SISIS EQUIPMENT (MACCLESFIELD) LTD
B2.....TACIT
B3.....FISON PLC
B4.....AGRILAND LTD
B5.....LINDUM SEEDED TURF
B6.....GROUNDSMAN INDUSTRIES

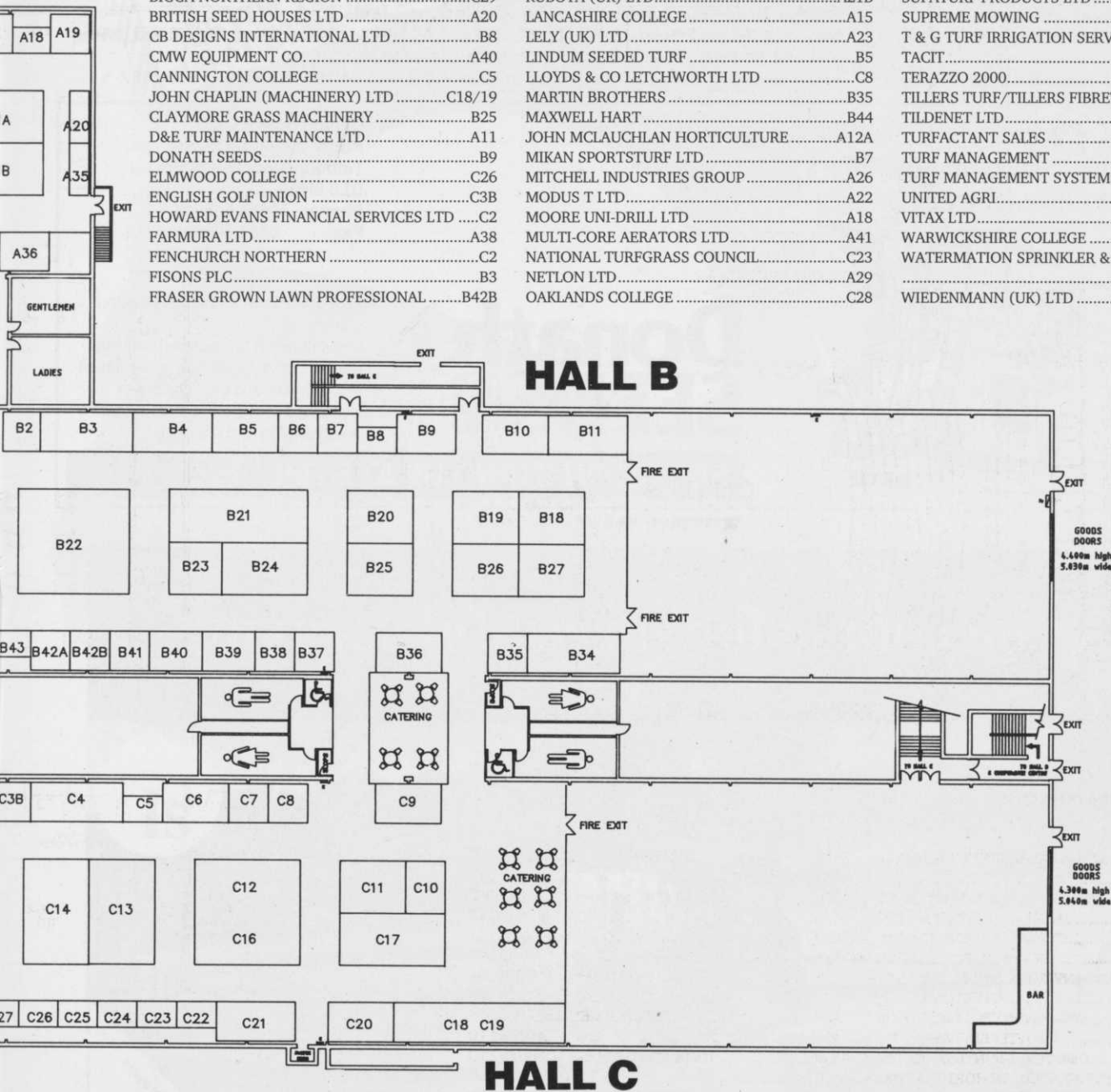
B7.....MIKAN SPORTSTURF LTD
B8.....CB DESIGNS INTERNATIONAL LTD
B9.....DONATH SEEDS
B20.....T & G TURF IRRIGATION SERVICES
.....WATERMATION SPRINKLER & CONTROLS LTD
B21.....ICI PROFESSIONAL PRODUCTS
B22.....ISEKI UK LTD
B23.....BLAZON EUROPE
B24.....H PATTISSON & CO LTD
B25.....CLAYMORE GRASS MACHINERY
B26.....PRO-TEE PRODUCTS
B35.....MARTIN BROTHERS
B36.....BEV GOLF EQUIPMENT

Exhibitors by alphabetical listing

ADAS	A2
AGRILAND LTD	B4
AITKENS SPORTSTURF LTD	A46
ALLEN POWER EQUIPMENT LTD	A28
ALLETT MOWERS	B42A
AMENITY POWER (GRASSBLADES PUBLISHING)	B41
ASKHAM BRYAN COLLEGE	C27
ATTERTON & ELLIS	A8
BAILEYS OF NORFOLK	A35
BARENBRUG UK LTD	A44
BELL TURF & IRRIGATION SERVICES	A12B
BETTER METHODS-EUROPE	A37
BEV GOLF EQUIPMENT	B36
BLAZON EUROPE	B23
BRACKENHURST COLLEGE	C24
BIGGA	C15
BIGGA NORTHERN REGION	C29
BRITISH SEED HOUSES LTD	A20
CB DESIGNS INTERNATIONAL LTD	B8
CMW EQUIPMENT CO	A40
CANNINGTON COLLEGE	C5
JOHN CHAPLIN (MACHINERY) LTD	C18/19
CLAYMORE GRASS MACHINERY	B25
D&E TURF MAINTENANCE LTD	A11
DONATH SEEDS	B9
ELMWOOD COLLEGE	C26
ENGLISH GOLF UNION	C3B
HOWARD EVANS FINANCIAL SERVICES LTD	C2
FARMURA LTD	A38
FENCHURCH NORTHERN	C2
FISONS PLC	B3
FRASER GROWN LAWN PROFESSIONAL	B42B

GANNON UK LTD	C9
GEM PROFESSIONAL	B38
THE GOLF SIGN COMPANY	B39
GRACE SIERRA UK	A48
GREENKEEPERS TRAINING COMMITTEE	C31
GROUNDSMAN INDUSTRIES	B6
HARDI LTD	A47
HAYTERS PLC	C12/16
HOLE-IN-WHITE (EUROPE)	A4
HUXLEYS GRASS MACHINERY	A25
I/C DISTRIBUTORS	A3
ICI PROFESSIONAL PRODUCTS	B21
INSTITUTE OF GROUNDSMANSHIP	C30
INTER SEEDS LTD	B37
INTURF LTD	A34
ISEKI UK LTD	B22
JACOBSEN	C13/14
JOHNSONS SEEDS	C6
KUBOTA (UK) LTD	A21B
LANCASHIRE COLLEGE	A15
LELY (UK) LTD	A23
LINDUM SEEDED TURF	B5
LLOYDS & CO LETCHWORTH LTD	C8
MARTIN BROTHERS	B35
MAXWELL HART	B44
JOHN MCLAUCHLAN HORTICULTURE	A12A
MIKAN SPORTSTURF LTD	B7
MITCHELL INDUSTRIES GROUP	A26
MODUS T LTD	A22
MOORE UNI-DRILL LTD	A18
MULTI-CORE AERATORS LTD	A41
NATIONAL TURFGRASS COUNCIL	C23
NETLON LTD	A29
OAKLANDS COLLEGE	C28

OTTERBINE AERATORS	A10
H PATTISSON & CO LTD	B24
PRIME WATERMEN LTD	B40
PROFESSIONAL SPORTSTURF DESIGN ASSOCIATES	A13
PRO-TEE PRODUCTS	B26
RANSOMES SIMS & JEFFERIES	A30
REASEHEATH COLLEGE	C25
RHONE-POULENC ENVIRONMENTAL PRODUCTS	A7
RIGBY TAYLOR LTD	A43
ROLAWN (TURF GROWERS) LTD	A27
RUFFORD TOPDRESS SUPPLIES LTD	A39
SPORTS TURF SERVICES	C6
SISIS EQUIPMENT (MACCLESFIELD) LTD	B1
SPORTS GROUND IRRIGATION	A9
SPORTS TURF RESEARCH INSTITUTE	C3A
STA-BRITE SUPPLIES LTD	A6
SUPATURF PRODUCTS LTD	A5
SUPREME MOWING	A32
T & G TURF IRRIGATION SERVICES	B20
TACIT	B2
TERAZZO 2000	B43
TILLERS TURF/TILLERS FIBRETURF	C4
TILDENET LTD	C21A
TURFACTANT SALES	C7
TURF MANAGEMENT	A33
TURF MANAGEMENT SYSTEMS	C11
UNITED AGRI	A21A
VITAX LTD	A24
WARWICKSHIRE COLLEGE	C22
WATERMATION SPRINKLER & CONTROLS LTD	B20
WIENENMANN (UK) LTD	A36



B37	INTER SEEDS LTD
B38	GEM PROFESSIONAL
B39	THE GOLF SIGN COMPANY
B40	PRIME WATERMEN LTD
B41	AMENITY POWER (GRASSBLADES PUBLISHING)
B42A	ALLETT MOWERS
B42B	FRASER GROWN LAWN PROFESSIONAL
B43	TERAZZO 2000
B44	MAXWELL HART

HALL C

C1	BIGGA SEMINAR REGISTRATION
C2	FENCHURCH NORTHERN

C3A	SPORTS TURF RESEARCH INSTITUTE
C3B	ENGLISH GOLF UNION
C4	TILLERS TURF/TILLERS FIBRETURF
C5	CANNINGTON COLLEGE
C6	JOHNSONS SEEDS
C7	SPORTS TURF SERVICES
C8	TURFACTANT SALES
C9	LLOYDS & CO LETCHWORTH
C10	GANNON UK LTD
C11	TURF MANAGEMENT SYSTEMS
C12/16	HAYTERS PLC
C13/14	JACOBSEN
C15	HOWARD EVANS FINANCIAL SERVICES LTD
C18/19	JOHN CHAPLIN (MACHINERY) LTD
C20	ELMWOOD COLLEGE
C21	ASKHAM BRYAN COLLEGE
C22	OAKLANDS COLLEGE
C23	BIGGA NORTHERN REGION
C24	INSTITUTE OF GROUNDSMANSHIP
C25	GREENKEEPERS TRAINING COMMITTEE

C26	ELMWOOD COLLEGE
C27	ASKHAM BRYAN COLLEGE
C28	OAKLANDS COLLEGE
C29	BIGGA NORTHERN REGION
C30	INSTITUTE OF GROUNDSMANSHIP
C31	GREENKEEPERS TRAINING COMMITTEE
C32	WARWICKSHIRE COLLEGE
C33	NATIONAL TURFGRASS COUNCIL
C34	BRACKENHURST COLLEGE
C35	REASEHEATH COLLEGE
C36	ELMWOOD COLLEGE
C37	ASKHAM BRYAN COLLEGE
C38	OAKLANDS COLLEGE

Who to look out for...



Also Gannon will be introducing the Aera-Vator attachments, namely the Seeder Box, Smoothing Roller and Seed Rake. Also exhibited is the Gill Spiker Overseeder used by golf courses, local authorities and sports surfaces.

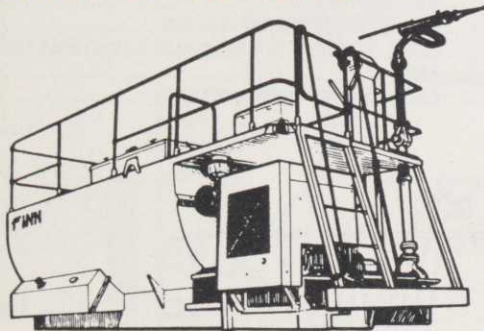
GEM PROFESSIONAL - Stand No. B38
Brookside Lane, Oswaldtwistle, Accrington,
Lancs BB5 3NY
Tel: 0254-393321 Fax: 0254-236775

Contact: Patrick Dyer
Gem Professional, the largest privately owned manufacturer of fertilisers and turf dressings, will be exhibiting their exclusive range of products and look forward to welcoming friends old and new to their stand. The first company to achieve BS5750 quality assurance in the industry will have their technical representatives in attendance and will be delighted to discuss your requirements in detail. The Gem Professional product

range is the result of over one hundred years of experience in the manufacture of fertilisers and can be relied upon to give complete satisfaction at a fair price.

THE GOLF SIGN COMPANY
- Stand No. B39
65/69 Old Chester Road, Birkenhead, Wirral
L41 9AW
Tel: 051-647-8081 Fax: 051-666-1087

Full range of amenity and wildflower species
FINN Hydroseeders and tackifiers
CONWED Fiber mulches



Donath SEEDS 

SEE US ON STAND B9 AT BTME

Donath Seeds Ltd.
Priory Industrial Estate
Tetbury Gloucestershire
GL8 8HZ
Phone: 0666 502834
Fax: 0666 502401

Fast application and reduced labour costs.
One operation for multiple products
Cost effective landscape revegetation
Reclamation and erosion control
Enhanced establishment for longterm satisfaction and results.

Get on course for successful spraying



Whatever your spraying problem on course or around the park, **Hardi has the answer.** From hand held and trolley sprayers to tractor and utility truck units, the Hardi range of amenity sprayers stand ready to get you on course for successful spraying.



Take a look at the specification, and then choose Hardi: nobody offers a more comprehensive range, or the experience of application technology, worldwide.

Please send me details of HARDI Amenity Sprayers

Name _____
Position _____
Address _____
Tel _____
GL1.93

Hardi Ltd., 4/5 Watling Close, Sketchley Meadows, Hinckley, Leics. LE10 3EX
Tel: (0455) 233811 Fax: (0455) 233815

Who to look out for...



Contact: David Frances

The Golf Sign Company, engravers and sign manufacturers since 1887 produce high quality sign products. Tee markers and discs, yardage markers, main entrance signs with full colour crests, car park and road signs, signs for the clubhouse, locker rooms, bar and professional's shop. Health and Safety at Work, caution and warning signs are a speciality with many items ex-stock for immediate dispatch. Also manufactured are the GREENKEEPER range of standard information signs, very popular with greenkeepers and course managers at over 300 private and public golf courses in the UK and Europe. GREENKEEPER signs provide a high quality, durable, weather resistant range of 8" x 6" Stove enamelled aluminium signs, complete with a 14" aluminium fixing spike, with over 25 standard wordings and a 24 hour delivery service, the GREENKEEPER range offer exceptional value for money at £3.99 per sign.

GRACE SIERRA UK - Stand No. A48

61 Loughborough Road, West Bridgford, Nottingham NG2 7LA
Tel: 0602-455100 Fax: 0602-455311

Contact: Mark Hunt

Grace Sierra UK will be exhibiting their established range of controlled release fertilisers for

turf and landscape applications. All products feature the unique organic resin coated granules offering an unrivalled 5-6 months longevity of temperature-only dependent nutrient release. Tees, fairways, approaches and winter season pitches can all be fertilised once in early spring with no need for re-application that growing season. Also present will be Grace Sierra's range of water soluble fertilisers designed for use on sand based constructions, with a new high acidification analysis for lowering pH levels on golf greens and tees.

GREENKEEPERS TRAINING COMMITTEE

- Stand No. C31

Aldwark Manor, Aldwark, Alne, York, North Yorks YO6 2NF
Tel: 03473-640

Contact: Neil Thomas, General Administrator

The Greenkeepers Training Committee (GTC) has recently launched a new Training Manual to coincide with the introduction of Vocational Qualifications. This Manual has received wide acclaim and is recommended to all greenkeepers. The Manual will be available on the stand at a cost of £14.

GROUNDSMAN INDUSTRIES

- Stand No. B6

The Mill, Seymour Street, Ballymoney, Co Antrim, Northern Ireland BT23 7SR

Tel: 02656-67049

Contact: Bill Warke

Don't miss the opportunity to see the latest technology in turf aeration machinery. These elliptical action fine turf aerators have been in research and development for five years, and this investment is reflected in the result. A much simplified design with fewer moving parts - a sealed bearing crank driving the rubber jointed mechanism. The extensive range of implements include the 'well known' twin, triple, and quadra holder capable of accepting solid, hollow, and slitting tines. Groundsman Industries have also developed an attachment called the Cluster Holder. This implement can accept up to 12 tines per head, and aerate to a pattern of less than 1 inch x 1 inch.

HARDI LTD - Stand No. A47

4/5 Watling Close, Hinckley, Leicestershire LE10 3EX

Tel: 0455-233811 Fax: 0455-233815

Contact: Colin Gregory

Hardi Ltd, being the UK's leading supplier of amenity spraying equipment, will be displaying a full range of mounted, trailed, de-mountable, knapsack and compression sprayers. A walk boom will be displayed. This is able to be used in

ADAS THE COMPLETE SERVICE FOR GOLF AND LEISURE DEVELOPMENTS

"FROM CONCEPTION TO COMPLETION"

Whether you are looking to improve your existing facilities, develop new amenities or just require expert advice on aftercare, ADAS can help.

Use our unique blend of design, technical, financial and environmental knowledge and practical skills to cut the complexity of design, construction and aftercare.

Make sure your development is successful by using ADAS Consultancy.

For total confidence with your development contact:

CHRIS STANSFIELD

ADAS GLEADTHORPE, THE GRANGE

MEDEN VALE, MANSFIELD

NOTTINGHAM, NG20 9PF

TEL: 0623 846742 FAX: 0623 847424

VISIT US ON STAND A2



ADAS

FOOD, FARMING, LAND & LEISURE

Who to look out for...



conjunction with mounted, trailed or de-mountable sprayers. Its unique feature of being able to work on USGA spec greens is of paramount importance to the new courses being constructed in the UK. All sprayers meet with all the current EC and HSE legislation which is becoming so much a part of today's business. Special sprayers built to the customer's own specification can be discussed. Machines on display: AM PS 300 de-mountable sprayer fitted to a Cushman, AM TR-2-800 trailed sprayer, AML 200 mounted sprayer. Come and discuss your requirements with Colin Gregory and Geoff Dandy. You will be sure of a warm welcome.

HAYTERS PLC - Stand No. C12/16
Spellbrook, Bishop's Stortford, Herts CM23 4BU
Tel: 0279-723444 Fax: 0279-723821
Contact: Tina Pulsford

The prominence of Hayter Beaver's extended stand at this year's exhibition indicates the company's commitment to the golf course industry. Taking pride of place will be the unique Articulator. This rear-mounted all terrain rotary mower is ideal for cutting even the most difficult rough. Its floating heads are specially designed to follow ground contours without scuffing. Many golf courses have already discovered the benefits of the high performance T44 triple. This high specification machine is well suited for cutting fairways fast. Major features include ease of operation and user comfort. The T92 triplex is proving to be a winner for fast efficient cutting of greens and has a mowing performance of 156 cuts per yard at 3.5mph. Visit us on Stand C12 to see these machines and find out more about Hayter Beaver's exciting range of golf course machinery for 1993.

HOLE-IN-WHITE (EUROPE) - Stand No. A4
Skinners Farm, Epping Lane, Stapleford Tawney, Romford, Essex RM4 1ST
Tel: 0708-688435
Contact: Robert D Paterson

We return to Harrogate for the third year to enable greenkeepers and trade to see first hand a demonstration of Hole-in-White in use. Hole-in-White is a golf hole turf whitener and has been specially designed to provide the golf course manager/greenkeeper with a fast and most efficient way of painting the inside of the golf hole (top inch) using our patent device and quick drying new formula aerosol paint. Don't miss this opportunity to come along and see us on Stand A4.

HUXLEYS GRASS MACHINERY
- Stand No. A25
The Dean, New Alresford, Hampshire SO24 9BL
Tel: 0962-733222 Fax: 0962-734702
Contact: Martin Cooke

Huxleys Grass Machinery will be showing equipment designed and built at their New Alresford works in Hampshire. On show will be the Huxtruk Turf Maintenance Vehicle with new all-weather cab and large capacity top-dresser. The latest Huxley 358 Greensmower and other machines from Huxleys' range of Heavy Duty Reelmowers, Reelmowers for compact tractors,

Turf Care implements, Turf Blazer rotary mowers, The Little David Stump Remover and Royer shredders and powerscreens will also be displayed.

I/C DISTRIBUTORS - Stand No. A3
1 Centre Park, Marston Moore Business Park, Rudgate, Tockwith, North Yorks YO5 8QF
Contact: R Beebee

On stand A3 at the BIGGA show, I/C Distributors will be showing their range of commercial groundscape equipment. PLM Power Products, will be showing their range of 'Little Wonder' hedgetrimmers, lawn edgers and leaf and litter blowers, together with the 'Shindaiwa' range of hedgecutters, brushcutters, chainsaws and pumps. Industrial Power Units, will be exhibiting their range of Dori & Ferris professional grass machinery and GUTBROD professional and domestic garden machinery.

◆ Did golf originate in Holland?... The historic golfing detectives have never given up on this poser and my own position in the continuing saga is well documented. It is, however, encouraging for we British to learn that a contingent of greenkeeping specialists from Holland, along with like-minded experts from neighbouring Belgium, will be attending BTME, not to convince us of the lowland origins of golf, but to seek information on all that is new and innovative in the world of golf course maintenance and equipment. With the barriers of European trade all but dead, the exchange of ideas, information and - yes - even scholarly historic discussion, will be one that BIGGA positively encourages. Welcome Holland, Welcome Belgium.

ICI PROFESSIONAL PRODUCTS
- Stand No. B21
Fernhurst, Haslemere, Surrey GU27 3JE
Tel: 0428-645454 Fax: 0428-657222
Contact: Roger Mossop

The ICI Professional Products stand at BTME '93 will feature the new addition to the 'Longlife' range, 'Mini-Gold'. 'Mini-Gold' is a high quality sulphur coated urea mini-prill fertiliser. The nitrogen (31:0:0) is in a slow release form with one application lasting up to 14 weeks. Also on display will be two new water soluble fertilisers 'Ultra-Green' N and 'Ultra-Green' NPK. These products are packed in unique 1 kg resealable plastic packs making for easy handling, storage and disposal. In addition ICI will have details of their free empty pesticide container collection scheme, and will also be launching a new product.

INSTITUTE OF GROUNDSMANSHIP
- Stand No. C30
19-23 Church Street, The Agora, Wolverton, Milton Keynes MK12 5LG
Tel: 0908-312511 Fax: 0908-311140
Contact: Derek Walder, General Secretary

For over 50 years there has been one organisation that has fought continuously to raise the status of sports ground and turf care professionals and regularise the standards of work. The IoG has run training courses and seminars and devised an examination syllabus that leads to widely recognised qualifications. NVQs are now being incorporated into the scheme to broaden the scope even further for students. The IoG has acted as a focal point for all new developments and information throughout the entire turf culture industry, helping today's turf professional to become highly skilled and fully versed in every aspect of an increasingly demanding job. The long standing co-operation and common goals shared by the IoG and BIGGA are underlined by the Institute's participation at BTME and BIGGA's presence at the IoG World Trade Exhibition at Peterborough from 7-9 September 1993.

INTER SEEDS LTD - Stand No. B37
Thorn Farm, Inkberrow, Worcs WR7 4LJ
Tel: 0386-793135 Fax: 0386-792715
Contact: Jeremy Howarth

Inter Seeds will be promoting their wide range of top quality varieties, which can be formulated into specialist mixtures for use on golf greens, tees, fairways and the rough. Main varieties include Lifalla Chewings Fescue, Liprosa Slender Creeping Red Fescue and Limousine Smooth Stalked Meadow Grass. A major development is the introduction of pre-germinated grass seed in specialist mixtures, offering fast establishment and reduced risk of weed invasion. Inter Seeds also offer a wide range of conservation mixtures for use in the rough, using native wild flower species. Jeremy Howarth and Danny Godfrey will be at the exhibition to provide technical advice.

INTURF LTD - Stand No. A34
Regent Street, Pocklington, York, North Yorks YO4 2QN
Tel: 0759-304101 Fax: 0759-305229
Contact: June Edwards

Inturf, grower and supplier of high quality cultivated turf, operates a seven day harvesting programme, producing six grades of turf from the selected 1,200 acres of nurseries situated throughout the country, and is the official turf producer for Wembley Stadium. Technical advice is offered by Turfgrass Services International Ltd, and the whole group accomplishes total quality management verified by BS5750 accreditation. Visit our stand number A34 where technical personnel will be available to offer advice.

ISEKI UK LTD - Stand No. B22
Broadway, Bourn, Cambs CB3 7TL
Tel: 0954-718981 Fax: 0954-719731
Contact: Arthur Wood/Andy Howard

Iseki UK Ltd provide a complete range of compact tractors and turf maintenance equipment. Compact tractors ranging from 14 to 45 hp supported by various turf care attachments including the newly introduced Iseki Greencare Shattermaster and the latest pedestrian Coremaster '6' Turf Aeration system. In addition to the compact tractors Iseki also provide a wide choice of power and garden products including the new SW 621 professional walk behind mower.

Who to look out for...



JACOBSEN - Stand No. C13/14

Jacobsen House, Telford Way Industrial Estate, Kettering, Northants NN16 8UN
Tel: 0536-417777 Fax: 0536-310245
Contact: Rene Orban

Machines from Jacobsen UK Ltd at this year's BTME will include the recently introduced Jacobson LF3810 Fairway or Amenity mower, complete with three metre (10ft) cutting width. It will be shown in 10 blade form to suit both greenkeepers and parks' staff and is powered by a 38hp diesel via a hydrostatic drive unit giving stepless forward/reverse speeds throughout the range. Also new to the BTME will be the Jacobsen range of Workhorse utility trucks. The Jacobsen Workhorse can have attachments such as top dressers and aerators to give this flexible machine the opportunity for year round operation. There is also the option of hydraulic service tools. Also available is the latest version of the 810 Express truck - a four-wheel general purpose utility vehicle. The new Jacobsen 422 pedestrian greens mower also makes its BTME debut. It has a low overall weight and a short wheelbase front to back for improved tracking. The newly designed eleven blade reel leaves a superb finish and it can be fitted with the Jacobsen Turf Groomer which virtually eliminates grain and lateral growth. These three new machines, plus the Jacobsen Greens King 422, provide the company with a complete range of greenkeeping management.

JOHNSONS SEEDS - Stand No. C6

London Road, Boston, Lincs PE21 8AD
Tel: 0205-365051 Fax: 0205-310148
Contact: Derek Welbourn

Please come along to discuss your grass seed requirements with our technical staff. Whether you are carrying out maintenance programmes, course extension work or new construction we will have the specialist mixture for you. As plant breeders we have introduced cultivars with specific golf course uses - Jupiter, Lance etc. We will also have information on Apron T - fungicide seedling protection against damping off - the safe and sure way to establish a high value playing surface.

KUBOTA (UK) LTD - Stand No. A21B

Dormer Road, Thame, Oxon OX9 3UN
Tel: 084-421 4500 Fax: 084-421 6685
Contact: Stuart Ellis

Kubota (UK) Ltd, a leading specialist supplier of turf maintenance machinery will feature the revolutionary zero-turn, 24hp, FZ2400 front mounted, ride-on mower which is designed to allow the operator unparalleled levels of machine turning ability. Also featured is the 40 SAE hp (36.5 DIN hp), L3250 tractor which is shown complete with the latest low noise DL Cab. Other tractors on show include a unit from Bi-Speed B50 compact tractor series together with machines from the 'G' Series of professional ride-on mowers. The latest GCD collectors are also featured. Power products include walk-behind mowers, brush cutters and hedge trimmers together with a selection of portable generators and pumps.

LANCASHIRE COLLEGE OF AGRICULTURE

AND HORTICULTURE - Stand No. A15

Myerscough Hall, Bilborrow, Preston, Lancs PR3 0RY
Tel: 0995-40611 Fax: 0995-40842
Contact: Lorna Tyson

Few colleges in the UK can boast such a long association with the sportsturf industry. In addition to offering a wide range of traditional part-time and full-time courses, including the new HND in Turfgrass Science and Sportsground Management, the Lancashire College is also leading the field in the development of commercial and educational links within the leisure industry. This close relationship ensures that our courses are designed and delivered in such a way as to produce highly trained people who are capable of accepting responsibility and able to respond to the rapidly changing technological and market demands. Come and visit our stand at the show.

◆ Bernhard Langer has done more to encourage golf in Germany than any other European player, his success generating unbelievable interest. The growth and potential of the game in Germany, along with building and maintaining new courses, has positively rocketed. BIGGA is proud to welcome a contingent of German greenkeepers and golf course specialists, many of whom are members of our Association, to BTME '93.

LELY (UK) LTD - Stand No. A23

Station Road, St. Neots, Huntingdon, Cambs PE19 1QH
Tel: 0480-476971 Fax: 0480-216167
Contact: David Boothby

Four wheel stability with three wheel manoeuvrability. That's the phrase that introduces the new Toro Workman 3000. This new turf utility vehicle is a totally new project from the Toro Company. Key features include an out front operator position to allow 2000lbs of cargo to be carried evenly between the two axles, minimising ground pressure and providing maximum stability. Exclusive Toro designed transmission has 3 forward speeds with synchromesh. The Hi-Low range gives six forward speeds and two reverse to provide a wide range of speeds needed to operate variety of attachments that will fit to the vehicle. See the vehicle on stand A23, if it's Toro, it has to be good.

LINDUM SEEDED TURF - Stand No. B5

Church House, Horkstow, Barton on Humber, South Humberside DN18 6BG
Tel: 065-261 329 Fax: 065-261 447
Contact: Stephen Fell and David Snowden

Lindum Turf on stand B5 will be displaying their range of turf. We are well respected and used by golf courses nationwide.

- Tournament - the top quality fescue bent greens turf.
- Tees 1 - the fine grass tees turf.
- Tees 2 - the hard wearing tees turf with dwarf perennial ryegrass.

All other sporting and leisure uses are covered by our range of turf grades. The Lindum portfolio of

products and services also includes turf in big and small rolls, a laying service by competent operators, a range of fertilisers and top dressings, and an overseeding package.

LLOYDS & CO LETCHWORTH LTD

- Stand No. C8

Birds Hill, Letchworth, Herts SG6 1JE
Tel: 0462-683031 Fax: 0462-481964
Contact: Derek Haley

This year's stand reflects Lloyds' reputation for first class service. This back-up, combined with our top quality machinery, enables greenkeepers and managers to maintain courses to the highest standard. Our Letchworth factory service unit has facilities to carry out any work from a simple reground to a full overhaul. Lloyds' Customer Choice Service Scheme is designed to suit individual requirements. The latest Paladin with its new nine-bladed cutting cylinder is ideal for those special events as well as everyday greens mowing. The addition of the Vertirake increases this machine's versatility. Lloyds' staff will be on hand to discuss with visitors their wide choice of gang-mowers and other equipment, including the latest in rotary and flail mowers.

MARTIN BROTHERS - Stand No. B35

18 George Street, Alderley Edge, Cheshire SK9 7EJ
Tel: 0625-584571 Fax: 0625-586130
Contact: Andrew Law

Martin Brothers (UK) Ltd established over 30 years ago operates from its base in Alderley Edge, Cheshire as a major supplier of quality products for construction and maintenance of golf courses, bowling clubs, amateur and professional football clubs, rugby clubs etc., also local authorities throughout the UK. We are the major supplier of Moneystone bunker sand throughout England and Wales. We also supply a large range of top dressing, root zone, drainage gravels, grit and footpath materials. We would like to welcome you on stand B35 where our staff will be pleased to answer any questions you have.

MAXWELL HART - Stand No. B44

612 Reading Road, Winnersh, Wokingham, Berks RG11 5NF
Tel: 0734-785655 Fax: 0784-785805
Contact: Carl Crome

Maxwell Hart will be launching a unique new product at this years BTME exhibition. By correct pH management of your soil, you will encourage your grass species to thrive, in alkaline conditions finer grasses suffer, earthworms are more active, alkaline weeds flourish. By applying Maxwell Hart's PhS flowable sulphur specially formulated for the turf industry you will gain optimum pH for your grasses to thrive, harden the grasses against turf diseases and discourage earthworm and weed invasion. Visit our stand for further details and find out how to obtain a pH meter free of charge. Also on display will be the full range of easy picker products for golf driving ranges and Standard Golf's new budget line course equipment.

JOHN MCLAUCHLAN HORTICULTURE

- Stand A12A

Who to look out for...



50A Market Place, Thirsk,
North Yorkshire YO7 1LH
Tel: 0845-525585 Fax: 0845-523133
Contact: John McLauchlan

Steeley Minerals Ltd: Steeley will be showing their new Biosorb calcined montmorillonite/diatomite granules which are used primarily as a fine turf conditioner. Biosorb is available in 25 litre and in bulk bags in three grades - fine (0.5 - 1 mm), standard (1 - 3 mm) and coarse (3 - 6 mm).

Humate International Inc: Humate International will have on display their straight humic acid products. These Humates are available as liquid, granules and soluble powder. Also shown will be wetting agent pellets for use with hose guns. These pellets include one with added Humate and another with added Humate and iron. Chelated nutrients and stress relievers are also available.

MIKAN SPORTSTURF LTD - Stand No. B7
Chatsworth Street, Barrow-in-Furness, Cumbria
Tel: 0229-430477 Fax: 0229-430488
Contact: Michael Caine

For 1993 Mikan Sportsturf Ltd have developed a full range of turf management products to go alongside our popular cockle shell pathway mate-

rial. For your convenience we now have available a full range of accessories from the 'Tactic' range. We feel our range of products and after care service are now second to none.

Come and meet
BIGGA's Executive Director

NEIL THOMAS
On Stand C15
BTME - THE PLACE TO BE SEEN!



MITCHELL INDUSTRIES GROUP
- Stand No. A26

Nottingham Road, Old Basford, Nottingham
NG6 0FU
Tel: 0602-787987 Fax: 0602-423119
Contact: Keith Ball

A wide range of John Deere equipment for greenkeepers and turf care professionals is being exhibited by specialist grounds care dealer GME Ltd, a member of the Mitchell Industries group of companies. The 2243 self-propelled offset triplex greensmower will be shown with three different cutting heads: verticut; nine-blade cylinder mower with groomer and powered rear brush; and five-blade cylinder mower. An 855 24hp

compact tractor with mid-mounted mower, the 22in walk-behind greensmower, and a 5hp 14SB model walk-behind mower complete the cutting equipment on display. In addition, there will be a ride-on bunker rake - equally at home helping to form bunkers during construction, as raking the sand flat - and a model from the John Deere easy-starting trimmer range.

MODUS T LTD - Stand No. A22
Brewery Park Industrial Estate, New Street,
Wem, Shropshire SY4 5DT
Tel: 0939-233213 Fax: 0939-233682
Contact: Adam Greaves

Value for money means a solid quality of build and prices that please. The all new Modus T range supply just that. For an update on these products and several exciting new machines for 1993 call in for a few words at stand A22.

MOORE UNI-DRILL LTD - Stand No. A18
Newhill House, 33 Kirk Road, Ballymoney, Co Antrim, Northern Ireland BT53 6PP
Tel: 02656-64444 Fax: 02656-65696
Contact: Sam Moore

Greenkeepers, are you under pressure to improve your course fairways? The Moore Uni-Drill uses a unique patented system which can over-seed large areas quickly, following ground contours

Troubled waters?

We create beauty while solving problems.

Contact our distributors

Golf Course Services

6 Stuart Road,
Market Harborough,
Leicestershire
LE16 9PQ.

Tel: 0858 463153/464853
Fax: 0858 410085.

Beware of expensive imitations

See us on
Stand A10 at
BTME

Otterbine Aerators

The prescription for troubled breathing, poor circulation, and changing temperatures in ponds and lakes is practical engineering that is aesthetically pleasing.



The aerators range in power, circulating from 600,000 to 20 million gallons of water in a 24-hour period. Each complete, turnkey system is delivered fully assembled; no special pumps or foundations are required.

Striking patterns begin with the Starburst, Rocket, Sunburst, Constellation, or Phoenix working alone or mingled together. Add the Otterbine Fountain Glo™ lighting system for spectacular evening display as well as security or the Rock Float Cover for the illusion of natural spray.

Otterbine Aerators meet the water management needs of golf courses, parks, recreational lakes, office and residential developments. Call or write for more information.

Barebo Inc.

5840 Main Rd. East,
Emmaus, PA 18049 USA.

Tel: (USA)
0101 215 965 6018
Fax: (USA)
0101 215 965 6050



Who to look out for...



accurately, introducing seeds at a constant depth and ensuring good soil contact by immediate consolidation using press wheels. Visit and discuss, stand A18, you're always welcome.

MULTI-CORE AERATORS LTD

- Stand No. A41

229 Higher Meadow, Clayton Le Woods, Leyland, Lancs PR5 2RR

Tel/Fax: 0772-451959

Contact: Ian Waddington

Multi-Core Aerators are the UK importers of the Multi-Core range of equipment. There are four machines in the range, two tractor mounted and two pedestrian machines. The versatile TM1500 1.5m wide tractor mounted aerator is robust enough to handle greens and fairways alike. Being fully sealed throughout the TM1500 is almost maintenance free and productivity of up to 6700 sq ft per hour makes it one of the fastest and most reliable machines. In its class for tractors with less horsepower there is the popular TM1000. For the best job on a bowling green or cricket wicket there is the Non-steering Greenkeeper with front roller and for golf clubs the Steering Greenkeeper with riding platform. A variety of different heads and tines will also be on display so if you or your club are considering purchasing an aerator why not visit our stand where a warm welcome awaits.

NATIONAL TURFGRASS COUNCIL

- Stand No. C23

3 Ferrands Park Way, Harden, Bingley, West Yorkshire BD16 1HZ

Tel: 0535-273188

Contact: John Shildrick

The National Turfgrass Council is the national organisation concerned with all outdoor amenity grass and non-grass surfaces used for sport or recreation. We link together 23 member organisations, over 30 patrons, and a widespread Associate membership. Our display shows our current activities on behalf of the industry, our forthcoming events, and our range of publications.

NETLON LTD - Stand No. A29

Kelly Street, Blackburn, Lancs BB2 4PJ

Tel: 0254-262431 Fax: 0254-694302

Contact: Tim Oliver

Netlon Ltd will give regular 'live' demonstrations of the benefits of the Netlon Advanced Turf System on stand A29 at BTME. Netlon Advanced Turf is the unique combination of natural turf and a mesh stabilised rootzone which resists wear and compaction. It is widely used on golf courses for tees, greens and walkways throughout the UK and across the world, from the Woburn Golf and Country Club to the Fan Ling Golf Club, Hong Kong. The live demonstration shows the unequalled stability of Advanced Turf.

OAKLANDS COLLEGE - Stand No. C28

Oaklands Campus, Hatfield Road, St Albans, Herts AL4 0JA

Tel: 0727-50651

Contact: Ian Merrick

The college offers a wide range of training courses for the professional greenkeeper. Full-time courses: 1 year course leading to the

National Certificate in Greenkeeping & Sports Turf Management. Part-time courses: Phase 1 and 2 Greenkeeping & Sports Turf Management, Parts 1 and 2 Horticultural Mechanics, Phase IV Business Management. Short Course Programme: a full range of short one or two day courses designed especially for the greenkeeper. The college also offers a full training and technical consultancy package to individual clubs and organisations.

OTTERBINE AERATORS - Stand No. A10

3840 Main Road East, Emmaus,

Pennsylvania 18049, USA

Tel: 215-965-6018 Fax: 215-965-6050

Contact: Charlie Barebo

Otterbine Aerators can help keep irrigation waters clean. This full-time management tool reduces bottom sludge, algae, aquatic weeds and foul aquatic odours through a process called Aeration. Mechanical aerators pull cold dense bottom waters upwards and throw them into the air where they collect atmospheric oxygen. This circulation and oxygenation helps speed biological clean-up process. Mechanical aerators are effective when the stress on the aquatic ecosystem is greatest during calm, still and cloudy days. Otterbine supplies a self-contained compact system with over 100,000 installations throughout the world.

◆ *Jim Arthur... the hottest news on the wire informs that that doyen of greenkeeping lore, Jim Arthur, will be making an unexpected but welcome appearance at BTME, addressing the gathered masses on a subject dear to his heart, 'The Analysis Fallacy'. Jim has stepped into the breach caused by the unfortunate withdrawal of one of our speakers and we may be sure that Jim's words of wisdom will echo to a packed lecture theatre. To paraphrase, 'This one should not be missed'.*

H PATTISSON & CO LTD - Stand No. B24

342 Selbourne Road, Luton, Beds LU4 8NU

Tel: 0582-597262 Fax: 0582-505241

Contact: Peter Dell

Pattison welcome new and old friends to their stand where they will be able to see their new nylon bogey hole cup - putting green markers and flag swivel with the easi-fit flag along with their comprehensive range of golf course and driving range equipment.

PRIME WATERMEN LTD - Stand No. B40

Wangford, Beccles, Suffolk NR34 8AX

Tel: 050-278 481 Fax: 050-278 729

Contact: Glyn Prime

Prime Watermen Ltd are main agents for the WEATHER-MATIC range of irrigation equipment as well as being designers and installers of complete irrigation packages tailor-made for turf, landscape and sports applications. The WEATHER-MATIC range comprises impact and gear driven pop-up sprinklers together with remote control valves from brass and plastic materials and also electrical controllers giving microprocessor accuracy at traditional mechani-

cal controller costs. Along with this Prime Watermen Ltd have introduced a three-wire, remote-control valve system which gives a visual display and permanent printed record of the date and time of irrigation periods, watering times for individual stations.

PROFESSIONAL SPORTSTURF DESIGN

ASSOCIATES - Stand No. A 13

75 Garstang Road, Preston, Lancs PR1 1LD

Tel: 0772-884450 Fax: 0772-884445

Contact: John Hacker

Professional Sportsturf Design Associates provide a complete agronomic consultancy service for the golf course. Whether upgrading a mature course to cope with today's increased play or developing a new course, Professional Sportsturf Design Associates can help you. Many mature golf courses are suffering severe agronomic problems and Professional Sportsturf Design Associates can provide the technical and analytical support necessary for a busy greenkeeping team. New golf courses are being planned every week. Having Professional Sportsturf Design Associates act as consultant-in-charge will ensure a high quality, well managed project. Accurate working drawings, tender documents and careful site supervision ensure that you get the best value for money. See Mike Harbridge, John Hacker or David Stansfield on stand A13 to discuss how we can be of help.

PRO-TEE PRODUCTS - Stand No. B26

Hill House Farm, Misbrooks Green Road,

Beare Green, Dorking, Surrey RH5 4QQ

Tel: 0306-712998 Fax: 0306-712997

Contact: Ian Stonestreet, Garth Bacon

Pro-Tee Products will be exhibiting their tried and tested all-weather teeing-off platform. The mat provides excellent economies for golf club management and greenkeepers alike, with the solid GRC base, and the low cost replaceable artificial grass sections. Due to an extremely successful first year, Pro-Tee Products are currently able to deliver, free of charge, demonstration units to all clubs who would like to try the revolutionary Pro-Tee mat. For further details please see the sales staff on the stand, or contact Pro-Tee Products at the above address.

RANSOMES SIMS & JEFFERIES LTD

- Stand No. A30

Ransomes Way, Ipswich, Suffolk IP3 9QG

Tel: 0473-270000 Fax: 0473-270032

Contact: Richard Bishop

Ransomes' position as a world leader in the production of grass cutting and turf maintenance machinery will be illustrated at the exhibition where the company will be showing a range of machines for the golf course market including aerators, greens and fairway mowers. Launched at the exhibition is the Fairway 300, a new high performance 5 unit ride-on fairway mower designed to cope with world grass growth conditions. The Fairway 300 features include 4 wheel drive providing exceptional traction, excellent fuel economy, low exhaust and noise levels. Hydraulically driven 26 inch wide cutting units provide a cutting width of 114 inches. The Greenspro 56, a highly sophisticated machine designed

Who to look out for...



for the precision cutting of fine turf will be alongside the Greens Triple Classic which offers high standards of finish with precise hand operated hydraulic controls and a choice of cutting units. Also on show will be a three wheel diesel Cushman Turf Truckster. The multi-purpose system vehicle available with a range of attachments for all aspects of turf care will be shown with the Vicon Spreader.

REASEHEATH COLLEGE - Stand No. C25

Reaseheath, Nantwich, Cheshire CW5 6DF
Tel: 0270-625131 Fax: 0270-625665

Contact: Dennis Mortram

Reaseheath College is the only centre approved by the Greenkeepers Training Committee for greenkeeper training in the North West and Midlands. The college has an excellent reputation and outstanding facilities which include a 9-hole golf course affiliated to the English Golf Union and operated on a commercial basis, providing students with valuable practical experience. Courses offered include a three year full-time HND in Golf Course Management, and part-time courses in Greenkeeping at craft level to NVQ 1 and 2, and Management level to Phases 3 and 4, as well as NEBSM. In addition Reaseheath offers a Greenkeeping Machinery Maintenance course designed to assist practising greenkeepers or people employed in ground maintenance work.

RHÔNE-POULENC ENVIRONMENTAL PRODUCTS - Stand No. A7

Regent House, Hubert Road, Brentwood, Essex CM14 4TZ

Tel: 0277-261414 Fax: 0277-264072

Contact: Sion Price

Is your time increasingly spent on paperwork? Are you sure your pesticide records are accurate and up-to-date? Are you looking for a simple system to deal efficiently, safely and accurately with the preparation and application of pesticides, in addition saving you time in the generation of spray records. If so, visit stand A7 and see the latest update of DATACHEM. DATACHEM is a computer software program designed to aid in the safe, accurate and efficient use of amenity pesticides. In addition to the array of standard features, the latest upgrade now incorporates a spray operator record system and the facility to enter details on any manufacturers product. Rhône-Poulenc market a wide range of products for the control of pests, weeds and diseases on turf, and we welcome the opportunity of BTME to discuss solutions to your turf problems.

RIGBY TAYLOR LTD - Stand No. A43

Rigby Taylor House, Garside Street, Bolton, Lancs BL1 4AE

Tel: 0204-394888 Fax: 0204-385276

Contact: Clive Williams

The enlarged Rigby Taylor stand will feature some of the most advanced products in turfcare today. New products, new formulations and new literature will be available along with a major advance in Fusarium control, which will be of interest to all professional greenkeepers. Come and meet our technical team, come and enter our competition and we are sure that you will be pleased that you decided to 'Talk to Rigby Taylor'.

ROLAWN (TURF GROWERS) LTD

- Stand A27

Elvington, York, North Yorkshire YO4 5AR

Tel: 0904-608661 Fax: 0904-608272

Contact: Terry Ryan

Rolawn is the largest turf grower in Europe and has built its reputation on supplying greenkeepers with the highest quality purpose grown turf, all year round and in any quantity. Turf is supplied either in square yards or in the new 25 sq yd rolls. As a special service, laying equipment is offered free of charge for customers to lay the large rolls themselves, in a shorter time and at a greatly reduced cost. If you want turf of consistent quality, or need advice on what turf to use, visit the stand at BTME, or contact head office or one of Rolawn's own local turf depots.

Come and meet

BIGGA's Education Officer

DAVID GOLDING

On Stand C15

BTME - THE PLACE TO BE SEEN!



RUFFORD TOPDRESS SUPPLIES LTD

- Stand No. A39

Acton Grange Quarry, Birchwood Lane, Moore, Warrington, Cheshire WA4 6XE

Tel: 0925-232476 Fax: 0925-574004

Contact: Peter Jefford

Rufford Topdress Supplies Ltd are leaders in the field of supplying golf courses and sportsgrounds throughout the UK with a superior range of topdressings and construction rootzone mixes. New for the show will be Super 1742 topdress, Bunker 17 Sand, Divot mix, Budget topdress and topdressing covers. All Rufford products are produced from their own quarries. Working closely with prominent soil scientists and agronomists has enabled Rufford to set very high standards within the industry. A warm welcome awaits old and new customers.

SPORTS TURF SERVICES - Stand No. C6

Newbridge Industrial Estate, Newbridge, Mid Lothian EH28 8LE

Tel: 031-333 2345 Fax: 031-333 5311

SISIS EQUIPMENT (MACCLESFIELD) LTD

- Stand No. B1

Hulley Road, Hurdsfield, Macclesfield, Cheshire SK10 2LZ

Tel: 0625-503030 Fax: 0625-427426

Contact: Mrs L Hilton

The SISIS Trugreen is a multi-purpose system for all fine turf surfaces. Use of the Trugreen allows a higher cut, increasing pace with less stress on the turf. This ride-on unit has twin split rollers, one on each side of the machine, both driven by a hydraulic motor axle from an 8.5hp vertical shaft engine. This provides a smooth forward/reverse traverse with a variable speed control. When used in conjunction with a third roller attachment levelling is achieved by the over-riding effect on slight hollows; the level surface being firmly rolled, whilst low areas are left. Other optional, interchangeable attachments include spiker-slit-

ter; brush, rake; Rolaspikes, roller and transport trailer.

SPORTS GROUND IRRIGATION

- Stand No. A9

6 Stuart Road, Market Harborough, Leics LE16 9PQ

Tel: 0858-463153 Fax: 0858-410085

Contact: Mike Walker

Sports Ground Irrigation Co. will be showing for the first time at BTME, their remote control irrigation system - this enables the greenkeeper to operate each valve manually without opening the valve box. The system uses a hand-held transmitter and smart decoders developed specially for the CIC range of decoders and is probably the easiest golf course controller to programme. Also on display will be the full range of "Hunter" gear driven sprinklers, including the "Hunter" golf range for which Sports Ground Irrigation are the UK distributors.

SPORTS TURF RESEARCH INSTITUTE

- Stand No. C3A

Bingley, West Yorkshire BD16 1AU

Tel: 0274-565131 Fax: 0274-561891

Contact: Dr Ian McClements

The Sports Turf Research Institute was founded in 1929 as an independent, non-profit organisation. It exists to raise turf standards through research, advice and education. Our advisory service employs a team of 17 agronomists who provide golf clubs, sports clubs, schools and local authorities throughout the UK with technical advice on turf maintenance. We have over 30 years experience in construction management and have directly participated in the successful construction of a wide range of schemes, including golf courses, soccer and rugby pitches, and bowling greens. As consultants, we provide an unparalleled service where a project can be overseen from the initial conception to final completion. At all stages of development, our scientists at Bingley can provide additional advice on soil physics, chemistry, turf pathology and ecology.

STA-BRITE SUPPLIES LTD - Stand No. A6

Unit 7 Bessemer Park, Bessemer Road, Basingstoke, Hants RG21 3NB

Tel: 0256-811811 Fax: 0256-811078

Contact: Dan Haas/Mike Fabb

Sta-Brite will be showing details of their HIFLIERS grass seed mixes, most of which have been upgraded to include more of the cultivars rated highly by the STRI in their latest listing. The STA-GREEN and SCHWEIZER ranges of sports turf fertilisers will be on show as will a new wetting agent. You can also get a sneak preview of their new catalogue and price guide. Published annually in February this is one of the few priced catalogues available that gives brief user-friendly product information together with prices for a very wide range of consumable turf care products and golf equipment.

SUPATURF PRODUCTS LTD

- Stand No. A5

Amenity House, 2 Maizefield, Hinckley Fields Industrial Estate, Hinckley, Leicestershire LE10 1YF

Who to look out for...



Tel: 0455-234677 Fax: 0455-234714

Contact: David Rodda

Supaturf will exhibit and demonstrate the benefits of their range of wetting agents including Aqua-Gro 20:S a concentrated, granular, spreadable application especially ideal for emergency spot treatment when water is not available. Other Aqua-Gro products include Aqua-Gro Liquid for application through sprayers, and Aqua-Gro Advantage for applying through a hose pipe. Other products include fertiliser spreaders, bunker rakes and specialist amenity products for all greenkeeping applications. Technical staff will be available to discuss Supaturf's complete range of organic and semi-organic fertilisers for greens, tees and fairways.

SUPREME MOWING - Stand No. A32

Wet Moor Lane, Wath-upon-Dearne, Rotherham, South Yorkshire S63 7LR

Tel: 0709-873436 Fax: 0709-878005

Contact: Linda Adams

Supreme Mowing will display the Supreme grinding system - a machine to suit all requirements and offering upgrading options as required. The Supreme system offers a machine capable of sharpening both cylinders and bottom blades with equal efficiency and precision. Cylinders can be sharpened in situ or out of frame. Why take up

precious working area with two machines when one can offer all options? Also on display will be our range of high quality replacement cylinders and blades to suit all machines. Supreme has it all.

◆ *My spies tell me... that bookings for the Grand BIGGA Banquet are pouring in at a great rate of knots. My advice, if you wish to join in the merriment, would be to book up right now.*

T & G TURF IRRIGATION SERVICES

- Stand No. B20

8 Whitcliffe Grove, Ripon,

North Yorkshire HG4 2JW

Tel: 0765-602941

Contact: N Glover

Once again we are pleased to join with Watermation on stand B20 where we will be happy to discuss your irrigation requirements. On display will be many of the sprinklers on the market together with new models for your inspection. We look forward to meeting old and new customers.

TACIT - Stand No. B2

48 Hillmorton Road, Rugby,

Works CV22 5AD

Tel: 0788-568818 Fax: 0788-537485

Contact: Richard Webb

TACIT renowned for the quality of their golf course accessories will be exhibiting several new products, of which will be the Refined Lazer hole-cutter, the one piece construction ball washer, with post and litter basket, the telescopic switch with large grips for those cold winter mornings, and their new design swivel flagpoles with anti wear bung and holecups as well as their granite style yardage plinths.

TERRAZZO 2000 - Stand No. B43

82-90 Priory Road, Kenilworth, Works

Tel: 0926-52994 Fax: 0926-52994

Contact: R Simmons

The Terrazzo 2000 Tee Marker is durable in the extreme with all colouring, logo work and lettering cast into the marble block. The top of the range model shows a full hole layout of each of the holes found at your course detailing greens, bunkers etc. We also produce other models showing hole number and yardages only.

Terrazzo marble is of unequalled prestige and yet the sheer weight of the product is a great 'anti-vandal' feature. The weathering properties and frost resistance of terrazzo is time proven.

For our brochure ring (0926) 851081.

CUTS, COLLECTS, CLIMBS, CARRIES, PULLS AND LEAVES OTHER 'RIDE-ONS' STANDING



**ALLEN
Mustang
A.T.M.**
ALL TERRAIN MOWER

See us on
Stand A28
at BTME



IT'S BETTER BUILT

The Allen Mustang is a go-anywhere, rugged 42 inch ride-on rotary mower. It is especially suited to bank mowing having a low centre of gravity and wide, low pressure flotation tyres with hydrostatic drive.

The Mustang is purpose made to cope with all manner of garden duties, whilst offering the operator a totally safe, effortless and practical way to 'tour the land'. Powered by a Briggs & Stratton Vanguard 16hp twin 4-stroke engine, other features include a differential lock and electric lift to cutter deck for precise, easy operation.

The adjustment for height of cut can be set to any height between 3/4" (2cm) and 4" (10cm) at the touch of a button. A powered collection system is also available.

For **FREE** brochure complete the coupon or phone 0235 813936 NOW!

To: Allen Power Equipment Ltd, Dept G1
The Broadway, Didcot, Oxon OX11 8ES.

Please send **FREE** Allen Mustang details.

Gl.1.93

Name.....

Address.....

Postcode.....

**TILDENET LTD - Stand No. C21A**

Longbrook House, Ashton Vale Road,
Bristol BS3 2HA

Tel: 0272-669684 Fax: 0272-231251

Contact: Paul Drew or Lawrence Green

Tildenet will be exhibiting their revolutionary germination material, which also helps to protect the greens from frost and snow.

In addition to the wide variety of perimeter ball stop and soil support netting, new products on display include golf target nets and a new material which stops golf balls from plugging on driving ranges.

TILLERS TURF/TILLERS FIBRETURF

- Stand No. C4

Castletorpe, Brigg,

South Humberside DN20 9LG

Tel: 0652-650555 Fax: 0652-650064

Contact: Tim Fell

"The best turf we've ever had" is the reaction from most of our customers - greenkeepers and architects, landscapers and contractors. Come and see it for yourself on the Tillers stand. If you agree that healthy roots are the key to a high quality, hard-wearing sward, come and talk to us about Fibreturf reinforced rootzone. By reducing compaction and keeping the soil pores and channels open, the surface of the Fibreturf tees and pathways stays greener, firmer and dryer. And with far less annual maintenance, your budget will go further too.

TURFACTANT SALES - Stand No. C7

The Hollies, Pebmarsh Road, Twinstead, Sudbury, Suffolk CO10 7ND

Tel: 0787-269292

Contact: Edward Clarkson

In the past two years Turf-Actant has made a significant impact on the wetting agent market. Manufactured in the UK and sold direct to Greenkeepers and Turf Managers, Turf-Actant is a high quality wetting agent available at the lowest price of any comparable product.

Clients throughout the country confirm that both their budgets and their sports turf have benefited from the regular use of Turf-Actant in 1992 and we are certain that many more will enjoy the same benefits in 1993. We hope you will be amongst them, please come and see us!

TURF MANAGEMENT - Stand No. A33

38-42 Hampton Road, Teddington,
Middlesex TW11 0JE

Tel: 081-943 5000 Fax: 081-943-5658

Contact: Nicole LeVesconte

The monthly magazine that gives you all the latest news, views and techniques from the Turf industry, and what's more it's free! To receive your free copy of Turf Management every month simply complete a reader registration form, available from our stand A33. If you would like further information on Turf Management please visit us at our stand or contact us at the above address.

TURF MANAGEMENT SYSTEMS

- Stand No. C11

Dromenagh Farm, Sevenhills Road, Iver
Heath, Bucks SLO 0PA

Tel: 0895-834411 Fax: 0895-834892

Contact: Allan Moffat

Turf Management Systems welcome you to our stand to discuss the advantages of the unique pre-germinated grass seed and Liquid Sod process. Also all the associated products such as the slow release fertilisers in the form of Nutralene, Nitroform, and Sulphur Coated Urear. These fertilisers are all non scorch and controlled release. We will also display a range of top dressings and root zone mixtures, also seed samples.

UNITED AGRI - Stand No. A21A

15 Stamford Road, Exton, Oakham, Leics LE15 8AZ

Tel: 0572-813531 Fax: 0572-813531

Contact: Ron Denby

United Super Zip Topper is available in three versions, 12' 6" cut with wheels single or dual rollers which enables it to follow ground contours and is capable of working up to 10 acres an hour. It has a very clean cut, an even spread with quick recovery. It can cut from half an inch upwards. Low horse power required. Transport width 7' 10". It has five spindles with anti-scalp discs and 15 blades. United Parks Zip Mower is available in four versions, 7' 6" cut, with easy screw adjustable side skids, single or dual rollers, or with wheels. Extremely strong. Either machine will cut in forward or reverse direction. 3 point linkage front and rear.

Come and meet
Exhibitions/Membership Officer

DEBBIE SAVAGE

On Stand C15

BTME - THE PLACE TO BE SEEN!

**VITAX LTD - Stand No. A24**

Owen Street, Coalville, Leicester LE67 3DE

Tel: 0530-510060 Fax: 0530-510299

Contact: Trevor Holmes

Vitax Gro-Cover, a clear micro-perforated polythene germination fabric with unique funnel shaped perforations, was originally launched at the BIGGA show in 1991. Since that time it has established itself as a brand leader in the sport amenity market. Vitax invite you to come along to their stand to see how they have improved their product still further with a simple innovative product adaption. This product will be featured alongside the full Vitax sport amenity product range, including Ultraflo, the concentrated long term wetting agent and the well established range of Vitax Key amenity fertilisers.

WARWICKSHIRE COLLEGE

- Stand No. C22

Moreton Morrell, Warwick CV35 9BL

Tel: 0926-651367 Fax: 0926-651190

Contact: Peter Smith

Warwickshire College has a long tradition of quality courses for greenkeepers and grounds-men. The college is the GTC approved centre for greenkeeper training in the Midlands. A four year NVQ/City & Guilds programme is offered on both day or block release which provides the technical and management expertise that modern-day

greenkeeping and sports turf management demands. The college also offers a wide range of shorter courses in turf related areas including soft and hard landscape, chainsaw operation and FEPA pesticide training. Further details are provided in our Course Directory, obtainable from our stand or by contacting the college.

WATERMATION SPRINKLER AND CONTROLS LTD - Stand B20

Tongham Road, Aldershot, Hants GU12 4AA

Tel: 0252-336838 Fax: 0252-336808

Contact: Eileen Hawthorn

Watermation will once again be sharing a stand with their distributor and installer in the north of England, T & G Turf Irrigation of Ripon, North Yorkshire. On show will be their new Golf Rotor Sprinklers (GR range) which went into production in October '92 after lengthy testing both in the Watermation indoor testing station and also out on site. There are now three models in the range, GR1 for tees and small greens, GR2 for greens and GR3 for approaches and fairways. They incorporate many new features such as anti flood valve and a new circlip fixing for the guide plate for simple maintenance. They have also been designed with a flange plate encircling the lid for prevention of damage by mowers and to improve stability in the ground. Watermation are also showing three models in the popular TW2 controller range, the economy 1 zone TW2 1, the standard 4 zone TW2-4 and the new PC range TW2-PC.

WIENENMANN (UK) LTD - Stand No. A36

Stoneybrae, Potterhill, Paisley PA2 7TG

Tel: 041-884-2552 Fax: 041-884-6252

For the third time Wiedenmann will be exhibiting its range of turf maintenance equipment including Terra-Spikes - tractor mounted, deep aeration spiking machines - which are proving tremendously successful with sportsgrounds, golf clubs and contractors. Terra-Spikes range in operating widths of 1.35 to 2.10 m and depths of 30-40 cm with power requirements of 30-40 hp. Other equipment from Wiedenmann GmbH, West German manufacturers, includes Green Pluggers, Leaf Loaders and Seeders. A network of distributors has been set up nationwide and demonstrations of any item of equipment can be arranged by appointment. Also at the show the Company will unveil its latest item of grounds maintenance equipment which should prove of particular interest to greenkeepers.

◆ Harrogate is getting a face-lift... or to be more specific, the great hall in which BTME is staged is in the final throes of a magnificent refurbishment, all of which will be ready in good time for our great exhibition. Not content with lavishing attention on the main structure and fabric of the building, the brand spanking new hospitality suite is nearing completion and this also will be ready in good time for BTME '93 - I'm told it will be a great place to entertain important clients - we'll be sure to look out for you!