

JULY 1991

# GREENKEEPER

## *International*



**UNDER  
SCRUTINY:  
CHAMPIONSHIP  
COURSES**



**Preparing a  
course to PGA  
European Tour  
standard**

Tom O'Brien, B.E.M., reveals  
how Royal Birkdale maintains  
its world-class reputation



# OPEN SECRETS



**Great styles at the very best prices: BIGGA comes up with the goods!**



# BIGGA & BETTER OFFERS!

Be cool when it's hot!  
**T-shirts**

T Shirts  
Only available in white.  
Order No. BO6.....£6.95

**SPECIAL OFFERS**  
July Special Offer  
Kangol Woollen caps only £8.95 – save over 25% on shop price.  
Colours: Black, Navy, Beige, Maroon.  
Order No. B12.....£8.95

Only a few remaining slipovers from June's Special Offer. Half-price – £12.95.  
Colours/Sizes still available: Burgundy 42"; Pale Blue 40", 42", 44"; Yellow 40", 42", 44", 46"; Navy 38", 42"; University Green 44"; Beige 40".  
Order No. BO2.....£12.95

To order, simply use the Order Form card facing this page, enclosing a cheque made payable to BIGGA. Prices include VAT, Postage and Packing.

**UNIFORM**

**STOP PRESS**

**Blazers**  
BIGGA Blazers (including badge) NOW available through our new supplier – order straight away!  
Order No. B16  
.....£74.85 + VAT = £87.95

**Glenmuir Sweaters**  
Sizes: 36" – 50"  
Colours: Navy, Pansy, Black, Claret, Oxford Grey, Royal, Crimson, Light Grey, Peacock, Pink, White, Blue Mist, Natural, Bottle, Emerald, Azure Blue, Buttermilk, Carmine, Firtree, Helio, Slate Blue.  
Order No. BO1.....£27.95

**Glenmuir Mull Shirts**  
Short sleeved, 100% cotton piquet.  
Sizes: XS – XXL (36" – 50")  
Colours: Candy, Navy, Jade, White, Brilliant Blue, Peppermint, Ferrari Red, Peach, Sky Blue, Light Yellow.  
Order No. BO4.....£15.95

**Glenmuir Moffat Shirts**  
Short sleeved, 60% cotton /40% polyester  
Sizes: XS – XXL (36" – 50")  
Colours: Light Yellow, White, Burgundy, Jade, Pale Blue, Navy, Black, Stone, Peach, Candy, Ferrari Red, Bermuda Blue, Peppermint, Sky Blue, Oxford Grey, Ascot Blue.  
Order No. BO3.....£14.95

**Glenmuir Polo Neck Shirts**  
Sizes: XS – XXL (36" – 50")  
Colours: Pale Blue, White, Navy, Ferrari Red.  
Order No. BO5.....£13.95

**Blazer Badge**  
Order No. B09.....£11.95

**Ties**  
Colours: Light Blue, Bottle Green.  
Order No. BO7.....£4.50

**Tie Bar**  
Order No. B13.....£2.95

**Visor**  
Order No. B11.....£4.95

**Lapel Badge**  
Order No. B14.....£1.95

**Ladies Scarf**  
Order No. B15.....£6.95

**Books available from BIGGA Headquarters**  
**A Manual on Golf Course Construction, Turf Establishment and Cultural Practices.**  
**James B Beard**  
– Under the sponsorship of BIGGA, available in book form is James B Beard's two day presentation from the seminar at the BTME in Harrogate. 84 pages, soft covered and ringbound.  
Price: £22 including postage.

**Specifications for a Method of Putting Green Construction.**  
**Written by members of the USGA Green Section staff and edited by William H Bengeyfield**  
– A complete step-by-step guide including sub-grading, drainage, gravel and course layering, root zone mixtures, top mix covering, placement, smoothing and firming with a concluding chapter, Tip for Success and Opportunities for Error.  
Price: £2.50 including postage.

**EXCLUSIVE OFFER ++ EXCLUSIVE OFFER**

**BE A PROFESSIONAL IN YOUR PROFESSION**

**Exclusive offer to BIGGA members – 200 three-colour Business Cards for only £19.95**  
(Equivalent High Street price over £76!)



YES! For less than a third of equivalent High Street print shop price, you can have 200 Business Cards which contain your name, golf club and home address and telephone numbers, plus BIGGA's logo proudly emblazoned in red, blue and black! Example shown is smaller than actual size.

Just complete the panel below with the information you would like to appear on the Business Card and send it with your cheque for £19.95 (made payable to BIGGA) to **Business Card Offer, BIGGA, Aldwark Manor, Aldwark, Alne, York YO6 2NF.**

Name: .....

Home Address: .....

..... Tel: .....

Golf Club: ..... Position: .....

Address: .....

..... Tel: .....

If you are an official of BIGGA, please state your position: .....

**FREE READER  
REPLY SERVICE**

**Advertisers' Index**

A Greenkeeper International service to show on which page companies' advertisements can be found. For further information about their products or service, simply use the free Reader Reply Service card to be found facing Page 42 in this month's issue.

	Ad Ref	Page
AC & M Birch	58	14
Aeration & Drainage		
	43	21
Agripower	262	32
BTME	330	27
Bobcat	272	31
CDC	142	43
D&E Turf Maintenance		
	323	19
Dixon & Holliday	214	10
Devenish	307	42
E&S Sportsgrounds		
	248	19
Expoconsult	324	Insert
Farmura	88	Insert
Fray-Languard	325	26
Fred Hawtree	47	15
Howard Evans	29	26
Lawn Tech	301	44
Lely	61	28, 29
Maxel	263	24
Open Sales	329	20
Pattissons	35	10
Ransomes	9	16, 17
RFE	8	25
Rhone Poulenc	59	42
Soilcare	46	18
Suzuki	327	7
TRIMS	317	27
Wessex Farm Machinery		
	210	30
Yamaha	328	8
Colleges	•	33
Recruitment	•	36-37
Buyers' Guide	•	38-41
Classified	•	41

**In today's difficult economic climate many people are finding they have to be careful how they spend their money.**

**Indeed, many companies are very careful how they spend their advertising budgets and which publications they choose to use.**

**However, Greenkeeper International is an excellent investment for those advertising £s because advertising in our publication works - our free Reader Reply Service confirms this each month.**

**If you're not convinced that it could work for your company, call us and we will show you how.**

**Ring Bill Lynch on 091 413 7218, Carol Dutton on 0207 570117 or Andrew Clark on 03473 581.**



Official publication of the British & International Golf Greenkeepers Association

**JULY 1991**



**President**  
The Rt. Hon. Viscount Whitelaw K.T., C.H., M.C., D.L.

**BIGGA BOARD OF MANAGEMENT**

Chairman: George Malcolm  
Vice-Chairman: Roy Kates

**BOARD MEMBERS**

Ivor Scoones John Crawford  
Harry Diamond Barry Heaney  
Hugh Parry Paddy McCarron  
John Millen Clive Osgood

**EXECUTIVE DIRECTOR**

Neil Thomas B.A.

**EDUCATION OFFICER**

David Golding

**EXHIBITIONS/MEMBERSHIP OFFICER**

Debbie Savage



**EDITOR**

David White  
Tel: 0323 891291 • Fax: 0323 895593

**DESIGN/PRODUCTION EDITOR**

Tim Moat  
Tel: 0904 610611 • Fax: 0904 643074

**SALES AND MARKETING MANAGER**

Bill Lynch  
Tel/Fax: 091 413 7218

**ADVERTISING SALES EXECUTIVE**

Carol Dutton  
Tel/Fax: 0207 570117

**PRINTING**

Hi-Tec Print, Unit 7, Universal Crescent, Houghton Road, North Anston Trading Estate, Dinnington, South Yorkshire S31 7JJ  
Tel: 0909 568533 • Fax: 0909 568206

Greenkeeper International is the official magazine of the British and International Golf Greenkeepers Association and is published monthly at BIGGA Headquarters, Aldwark Manor, Aldwark, Aline, York YO6 2NF. Tel: 03473 581/2 • Fax: 03473 8864

Please address all advertising, subscriptions and address changes to BIGGA.

Contents may not be reprinted or otherwise reproduced without written permission. Return postage must accompany all materials submitted if return is requested. No responsibility can be assumed for unsolicited materials. The right is reserved to edit submissions before publication.

Circulation is by subscription. Subscription rate: UK £29 per year, Europe and Eire £39. The magazine is also distributed to BIGGA members, golf clubs, local authorities, the turf industry, libraries and central government.

**Editorial Offices**

All magazine contributions should be sent to: The Editor, Greenkeeper International, 13 Firle Close, Seaford, East Sussex, BN25 2HL. Tel: 0323 891291. Fax: 0323 895593. Although every care will be taken, no responsibility is accepted for loss of manuscripts, photographs or artwork. Opinions expressed are not necessarily those of the Association and no responsibility is accepted by the Association for such content, advertising or product information that may appear.

ISSN 0961 - 6977

© 1991 British & International Golf Greenkeepers Association

# GREENKEEPER

*International*

## CONTENTS

### A very pressing problem

Understanding the principles of compaction is something every greenkeeper should know - and want to pass on to his Club members! Our laymans' guide should be required reading for all players - why not ask the secretary to pin this vital article on the Club notice board ..Pages 18 - 20

### Tom O'Brien's Open invitation

Tom O'Brien is our featured head greenkeeper as he enters the final phase of fine-tuning Royal Birkdale for The Open Championship, golf's oldest and greatest tournament. His year round preparation ensures nothing is left to chance and he's ready for any contingency.....Pages 11 - 13

### Controversial advice and a Tour of strength

Preparation and attention to detail is the name of the game at PGA European Tour events. Bruce Jamieson leads us into the heady world of tournament golf, revealing secrets that bring near perfection in their wake. ....Pages 22 - 26

### Winter water - an irrigation cure-all?

Storing winter water in lakes and ponds is seen by many as the only salvation for future summer irrigation. Get the skid-steer loader out and start excavating!.....Page 32

### Forming a chemical waste disposal policy

Save it you've got it, ditch it, you've had it! Doom and gloom perhaps, but the incorrect and unlawful disposal of containers and tank washings could mean a visit to the magistrates court and a very hefty fine.....Page 14

## DEPARTMENTS

### Education

The only sure weapon against bad ideas is better ideas.....Page 33

### Around the Green

Fever pitch is reached as Iseki regional results pour in .....Pages 34, 35, 41, 43

### Letters

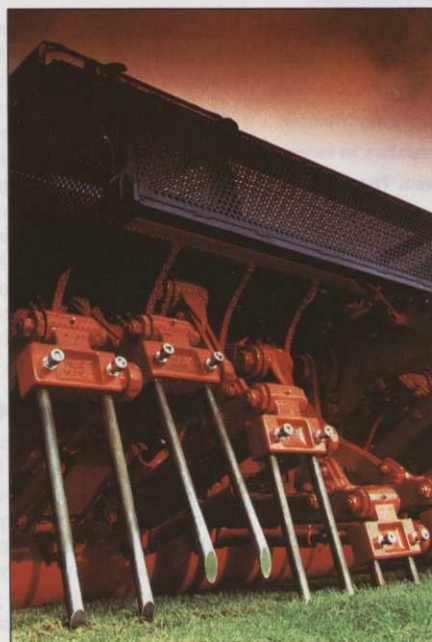
Don't agree with something you've read? You tell us about it!.....Page 15

### Advertising Features

Local Authority Golf - a look at one dutiful local authority and its golf programme .....Pages 30, 31  
All Terrain Vehicles - fun in store.....Pages 6, 7

### COVER PICTURES:

The Clubhouse at Royal Birkdale and Austria's Gut Altentann: championship courses in focus



# Flying Divots

An appreciation of what is not always appreciated

■ The Health & Safety Executive have disclosed plans to allow magistrates to dramatically increase maximum penalties for breaches in safety rules. The tenfold increase, from £2,000 to £20,000 per offence gives a clear signal to magistrates that offences should be dealt with firmly. Unlimited penalties are still available to the HSE in the Crown Court and such prosecutions have increased four times in the last three years. In addition, the HSE plan to increase the number of inspectors and will have the largest field force since 1982 by the end of 1991. Average fines under the Health & Safety at Work Act have doubled since 1988 to £877, the new increase coming as the result of extensive lobbying.

## Perils of pesticide poisoning

■ A report on a Lancaster University study gives some cause for alarm to those within our industry regarding pesticide poisoning. According to their findings, cases of pesticide poisoning by those affected by organophosphate pesticides, eg: those often used to control insects, weeds or fungi, could be much higher than suspected for one simple reason – 'Victims have had no success in reporting to the official agencies, with many victims just too ill to report to a baffling system'. Calling the system 'a failure', the study highlights the need to be adequately protected, totally aware of substances used, strictly adhere to the instructions issued for use, and keep immaculate records of ALL chemicals used. Ignorance of these basics can seriously damage your health. Above all, DEMAND protection at all times. It is your right.

### Wonders into tragedies

■ Over the fax today came a snippet too good to miss, originating from the pen of Peter McMaugh, Director of the Turfgrass Institute in Sydney, Australia: "Golf has almost become two distinct sports, one a spectator sport and the other a participant sport. The spectacle – the circus – the amphitheatre – the combatants – the commentators – trying to make it unique, all geared towards the spectacle of golf rather than the participant and all because of the advertising dollar, resting on TV ratings.

"And yet golf, of all sports, is both the ultimate in individualistic isolation and the most intense of competitions. All too often we are prepared to spend countless dollars on the few for TV and neglect the many enjoying the game in the fresh air.

"Budgets of \$16-20 million are not uncommon for new courses in Australia. 'Good' has become synonymous with outlandish or spectacular in the journalists' vocabulary. Commentators rush to pour adulation on companies who are technical miscreants – if not charlatans. Today's wonders become tomorrow's tragedies.

"The golf world seems to be full of spivs of two kinds – first the pro inspired by arrogance and second the technocrat inspired by ignorance – but both of whom can create masterpieces out of nothing in five minutes, one costing a fortune and the other saving it, and both leaving work behind in repairs for the next 20 years.

"I'll finish with the comment one designer made recently:

'Our main concern is to give the client the golf course he deserves'.

"I'll leave you to think about that."

### A job for Moaner

■ An advert placed by Tees Valley Tourism for a £150 a month 'part time moaner or professional complainer' drew a response that astonished the county tourist board for Cleveland. The job – visiting hotels, guest houses and restaurants – was one of making life as difficult as possible for management. Someone should have told TVT that a humble postcard on almost any golf club notice board would have brought instant response... from the hordes of part-timers who enjoy directing their complaints and moans at the poor greenkeeper.

### Golden divot for Alex

■ How good it was to see Seve Ballesteros back in winning form at the PGA Championship at Wentworth, and to see the Burma Road in such sparkling condition. My 'golden' divot goes to Alex Hay, a stout supporter of the greenkeeping cause, for heaping praise over the TV waves on course manager Chris Kennedy, and in bringing to the attention of countless millions the plight of all greenkeepers over the past two seasons. Whilst Alex gains the coveted 'gold', Peter Alliss loses Brownie points by daring to suggest that the West Course could use some re-bunkering and that he would love the job! The ghost of Harry Colt must be writhing at his audacity.

### Old journals wanted

■ Now a plea for your help. Over the years I've attempted to build up a library of golf and golf greenkeeping techniques. The STRI Journals are invaluable sources of reference and I am looking for copies from all eras. I've some from the thirties, (first published 1930) practically nothing from the forties, ditto fifties. Market prices gladly paid and all issues considered. Call 0323 891291 or drop a line. Show me that advertising works!

### Seve shows his mettle

■ Seve's renaissance continues apace with yet another great win – two in one week no less – at Woburn in The British Masters. Earning the equivalent of a greenkeeper's weekly pay over the past five outings each time he hit the ball – about £215 a shot – he also merits a 'golden' divot for kindly words spoken on Neil Whitaker's preparation of the Duke's course. This was no generous winner's lip service either, but well deserved in his describing the course as 'one of the best in Britain'.

### Couplets of wisdom

■ Groundsman, greenkeeper... who are they  
Without them both you'd rarely play  
On grounds and pitches well prepared  
From knowledge most would wish they shared  
Too hard, too soft, too fast, too slow  
But would you like to have a go?  
Like Hell you would, so on your bike  
You wouldn't know just when to spike  
To scarify, to slit or trim  
So leave the job all up to him  
And when you're sitting round the table  
Only speak if you are able  
To do the job as he can do  
You wouldn't really have a clue...  
– submitted by Tony Howard, Maxwell Hart Ltd.

## Divots

by Badleigh-Dunne



# Who and what are moving on and moving in, in the greenkeeping industry

## FACES & PLACES



■ Four members of the staff of SISIS Equipment Ltd complete 25 years service with the Company in 1991. Pictured are Lynn Hilton; George Hobbs; Dennis Bayley and Eric Burgess with directors R A Hargreaves; J W Hargreaves and A Harrison, plus production manager J D Arnold, who himself completed 25 years in 1989. The total service of these eight amounts to 206 years – an enviable record!

■ Kevin Munt is leaving John Jacobs Golf Associates to join Kajima Engineering Europe, as Manager of their Golf Course Management division. Links with Jacobs will however continue, for the current Colne Valley development at Denham, owned by Kajima, is a John Jacobs design. Given the acclaim this layout has received, no doubt other designs for Kajima will follow from the Jacobs stable.



■ Robin Greaves is moving from Bristol and Clifton GC to the Burhill Golf Centre, Thornbury, where a full length 18 plus 18 par three and 20 bay range will open in '92 on a pay and play basis. Robin has been in greenkeeping since school and was at Cotswold Hills GC before moving to Bristol and Clifton GC some 12 years ago, assuming the head greenkeeper role in 1985.

■ Vion (Buster) Lewer has secured a long deserved promotion, moving from Wells GC to take on the Erlestoke Sands course at Devizes, Wiltshire. This course, designed by Adrian Stiff of Western Golf Developments, will open in May '92 and at 6500 yards par 71 has already generated sufficient interest for the Wiltshire Golf Union to apply for their championships to be held there in 1995.



■ Mike Eddington and Andrew Robinson of Sports Turf Services were welcome visitors to Charterhouse Turf Machinery recently, the occasion being receipt of the Charterhouse Dealer of The Year Award, presented annually to the dealer with the best sales of the year. Last year's winners, Risborough Turf Supplies, worked hard to repeat their 1990 success but were pipped at the post by the Edinburgh-based Sports Turf Services.

Pictured, from left, David Jenkins, Mike Eddington, Andrew Robinson, Philip Threadgold.

■ Martin Townsend has been appointed Regional Technical Sales Manager, Avoncrop Amenity Products, this following a brief but successful spell with Monro Amenity Care. Martin has skills which have spanned several sports, including an apprenticeship at Lords, head groundsman at Eastway Multi-Sports Centre and head greenkeeper at Bishops Stortford GC. Apart from obvious practical skills, Martin has an academic background that includes C&G Phase I and II in Greenkeeping and Sportsground Management and the IOG National Technical Certificate.

■ A weary stork was sighted over Ashburnham GC recently, lugging the 8lbs 13ozs that is David Michael, a son of Ashburnham's Mike and Pam Wilson. The best wishes of BIGGA's South Wales section goes to them all.



■ Bert Cross wrote that Martin Twist, Hillside's head greenkeeper featured recently in Greenkeeper International, was married on May 25th to Anne-Marie. In wishing them good fortune from the NW Committee, Bert couldn't resist telling me that Martin had declared his golf clubs off limits but took fishing rods on honeymoon instead. My guess is that Anne-Marie is probably the best catch he'll ever make!

■ We'll call it the Charnwood merry-go-round, for the transfer list in the East Midlands, supplied by Gordon Mitchell, revealed that Tim Allard moved to Charnwood from Longcliffe GC and Steven Tolley moved from Charnwood to Longcliffe. Also away from Charnwood to Oxtun GC is Charlotte Skirrow, with Nick Danvers moving from Scraftoft GC to join the hard-working team at Leicester under Bill Hewetts. In Gordon's words, good luck to you all and may the grass grow greener on the other side of the fence.



■ Andrew Chamberlain has been appointed national sales manager by Bark Products, his special responsibilities including major accounts and commissioned agents.

■ If Charnwood is the merry-go-round, what adjective can be conjured up to describe the goings-on in North Scotland? The dictionary suggests circumfluous, (flowing all around) which aptly fits Gordon Moir's latest epistle of changes vis:

Kerry Park to Rothes after being out of greenkeeping for six months, Martin Cameron returning from Germany to be head greenkeeper at Buckpool, Derek Green starting as head greenkeeper at Huntly, with Alan Strachan moving from Montrose to Royal Dornoch as first assistant. Meanwhile... Maurice Rodgers has moved up from Biggar to Fraserburgh as first assistant, Iain Elliot has left Keith for Austria, whilst an un-named gentleman has moved from Orkney to Keith, leaving Orkney seeking a head greenkeeper. There's more... John Littlejohn has moved from Newmacher after completing his apprenticeship, to be first assistant at the John Souter complex at Tullybannoch, near Comrie. All this activity leads me to think there must be something in the Scottish water. Good fortune to you all, gentlemen.

■ The 18 hole par 72 parkland course at Hintlesham Hall, near Ipswich, designed by Hawtree, is due to open later this year with a feature that promises to be quite something. A unique Edwardian-style clubhouse is currently under construction and will complement one of England's finest historic hotels. Full marks to the developers for such foresight, especially when many Clubs consider razing their own delightful clubhouses to the ground in favour of so-called modern structures which often turn into architectural nightmares.

■ Doubts as to the readiness of The Ocean Course for the Ryder Cup may be instantly dispelled, for Kiawah Island's 'magnificent work of art', opened for regular play on May 24th for up to 100 players a day. Players reported being spellbound by its character. Playing 7371 yards from the tiger tees, the course features 12 holes directly along the Atlantic Ocean and has a distinctly Scottish links flavour that should suit our team admirably. Surprisingly, considering the huge investment, cost of play is not exorbitant, with fees of \$100 (about £55) including cart rental and unlimited practice balls quoted.



■ Peter Jefford, MD of Rufford Top Dress Supplies Ltd., has appointed his wife Margaret (pictured) to assist in promotions and exhibitions. Margaret's wealth of experience in sales and marketing will benefit Rufford's dramatic expansion in the sports and leisure industry. The quality of Rufford's range is well known and to further enhance this,



Michael McDonnell (pictured) has been appointed as head of production and quality control. Commenting, Peter Jefford said 'This is just reward for Michael, who has been with Rufford's from its conception, his vast experience in quarry operations and his dedication to detail will be a great asset'.

# ATV

Singing in terrain... climb anything, go anywhere vehicles make their mark on the golf course



## All-Terrain Vehicles

**T**hey're glamorous wee beasts, conjuring in the mind a vision of Moto-Cross and airborne scramblers flying 50 feet into the air. It's true these versatile, go anywhere, do anything, little vehicles were spawned directly from the sport of motorcycling, but their rapid development has seen them used in situations as diverse as polishing the aisles in Marks & Spencer or rounding up stray animals at a safari park, together with increased use on golf courses, be they wet or dry, flat or hilly.

Prompted by the impropionate amount of interest shown in ATVs at the Landscape Industries Show, and the ear to ear grins on the faces of those who took demo rides, Greenkeeper International, in the cloak and dagger guise of your roving editor, quizzed greenkeepers at the show and quickly discovered that in most cases All Terrain is translated as Rough Terrain. So successful have the ad. campaigns been in promoting the vehicles' ability to climb mountains that the day-in-day-out workhorse character is often overlooked. Further, in later asking the question of several renowned head greenkeepers: "What do you look for in an ATV?", we were surprised by the wide variance of answers.

Steve Suttle, at North Foreland GC in Kent, felt that his course, on chalk downland with gentle sloping terrain, drained so well that he had no need for an ATV, although he resisted using tractors unless absolutely necessary and used three turf trucksters for maintenance work and as runabouts. Avoiding compaction is high on his priority list and if an ATV miraculously appeared, he would insist on low flotation tyres.



# Rough busters

**Pictured, clockwise from top, the Suzuki LT-F4WDX King Quad; the Kawasaki Mule 1000 with Logic rotary mower; the Polaris Big Boss 6x6 six wheel drive; the Kawasaki KLF 300B**



→ The research experience of David Berry, at Bury GC in Lancashire, prompted by the envious news that his Club secretary has earmarked such a purchase was, in his own words, 'an eye opener'. Admitting he didn't know much about them, his 'wants' list now includes: low centre of gravity; seating for two; load-carrying hydraulic dump box; anti-roll bar with optional cab; low-flo tyres; PTO and tow-bar; implement attachment; a steering wheel and regular layout pedals; four wheel drive and a diesel engine. The use of 4WD is, he insists, an essential in view of the steep slopes at Bury and he believes that both excess pressure and stress is put upon the suspension of his present runabout. Conscious of the large bag/electric trolley syndrome, he is aiming to set a good example by using a light, turf-friendly ATV whenever possible.

Stewart Melville already uses an ATV on his hillside course of Lothianburn, near Edinburgh, tackling hills that are near vertical. Sheep roam on the course and he finds them a troublesome intrusion on what he describes as a labour-intensive layout. 4WD he sees as an essential, as are very sound brakes. He is also cost conscious and thinks diesel is a must. Three questions to be answered, were he to replace his current model, would be: 1) Will it have the capacity to do what I want and will it cope with the hill-



Terratrac TT 80 by Inter-Drain

side?; 2) What is the quality of service, in particular is the maintenance agreement a sound one?; 3) Is it cost effective? His critical buying decision would not rest on price alone however, for in his experience short time savings can result in long term costs in repairs and lost man-hours, an important point.

Finally we asked Ray



Yamaha Pro-Hauler with trailer

Day, of Saunton GC in Devon, for his views and once again the compaction problem loomed large. For him 4WD is a must, as are low-flo tyres and a diesel engine. He likes the idea of a pick-up type body with drop sides and a tailgate and would welcome a fixture to accommodate an irrigation hose reel, and a bolt-on bench vice. A wide wheel axis and a short wheel base, giving good stability on undulating ground, is equally important and extras such as PTO, three-point linkage and possibly a winch to haul hydro drive machines aboard would be highly desirable. He thinks that such a versatile machine would be expensive but would be a lot more vehicle than a mere run-around.

The world of LOGIC, who specialise in ATV accessories, solve most of these 'must-have' needs and manufacturers themselves are constantly looking at new ways to add to what is already accepted as a machine of unique versatility. Cost, in the writer's opinion, is not something that should prevent serious consideration when the need for a highly manoeuvrable work machine is next mooted.

# King off the Road

Suzuki - the pioneers in Four Wheel Drive ATV's

	SUZUKI LT-F4WDX	HONDA TRX 300 FM	YAMAHA YFM 350 4WD	KAWASAKI KLF 4x4
4WD CAPABLE	✓	✓	✓	✓
2WD CAPABLE	✓	✗	✗	✗
15 SPEED TRANSMISSION	✓	✗	✗	✗
HIGH/MED/LOW REDUCTION BOX	✓	✗	✗	✗
INDEPENDENT FRONT SUSPENSION	✓	✓	✓	✓
INDEPENDENT REAR SUSPENSION	✓	✗	✗	✗
FRONT DIFF LOCK IN/OUT CAPABLE	✓	✗	✗	✗
HYDRAULIC BRAKES	✓	✓	✓	✓
SHAFT DRIVE	✓	✓	✓	✓
210mm MIN. GROUND CLEARANCE	✓	✗	✗	✓
SPEEDO STD EQUIPMENT	✓	✗	✗	✓

The new Suzuki LT-F4WDX is strictly in a class of its own. The proven Four Wheel Drive engine is now bigger, more powerful and offers improved low and mid range torque capabilities.

The four wheel drive system on the King Quad has three drive modes - 2WD, 4WD and 4WD with front differential lock, plus the added benefit of a handy reverse gear.

Three speed secondary transmission guarantees a gear for almost any use - high, low and super low - covering a range of fifteen speeds.

With the widest track width of any 4 wheel ATV available, oil damped shock absorbers (with pre-load adjustment), and the many other features of the

King Quad, you can be sure of being first in the field.

**King  
Quad**



First in the field

**SUZUKI**

Send to Heron Suzuki Plc, Enquiry Centre, Unit 16, Headlands Business Park, Salisbury Road, Ringwood, Hants BH24 3PB or call 0425 470354

Please send LT range brochure Applicant must be 18 years or over

Mr/Mrs/Ms/Miss \_\_\_\_\_

Address \_\_\_\_\_

Postcode \_\_\_\_\_

Tel. No. \_\_\_\_\_

Occupation \_\_\_\_\_

A Heron International Company

GI.7.91

Safety First. Wear a helmet, eye protection and protective clothing, slow down on unfamiliar terrain or when visibility is reduced. Read owner's manual carefully.

# Back to the



Penncross/  
USGA Spec.



## THE GREAT DEBATE

Rather as predicted, the continuing interest in the USGA Specification for constructing greens continues – perhaps even gathers pace. Following Consultant Agronomist Jim Arthur's thought-provoking views in our May issue, and to maintain editorial impartiality, we now publish two further views on a subject with legs; it'll run and run...

### From Gordon Jaaback:

It is obvious from Jim Arthur's article that there is still much controversy and apprehension over the merits and use of the USGA Specification. As an agronomist just four years in Britain I am loath to query his wealth of experience in this country – yet none of us in the technical, commercial or practical world of turfgrass can override sound scientific fact seen in the correct context.

Today, with the rise in professional sport and the added boost through the media, the demands on high quality grassed surfaces are much greater than ever before. Wear is heavier and consequent compaction on them is more severe. Furthermore, as Jim Arthur maintains, play is extended or often concentrated – particularly golf, rugby and football – into a winter season which differs markedly with the harsh extremes in the North American continent, where snow cover or continual freezing prevents play and enforces a period of dormancy. Yet this in itself should not prejudice the use of USGA Specification in Britain.

It is not my theory that is offered – it is the basics of turfgrass science, soil physics and hydrology, which should be the foundation of any turfgrass programme.

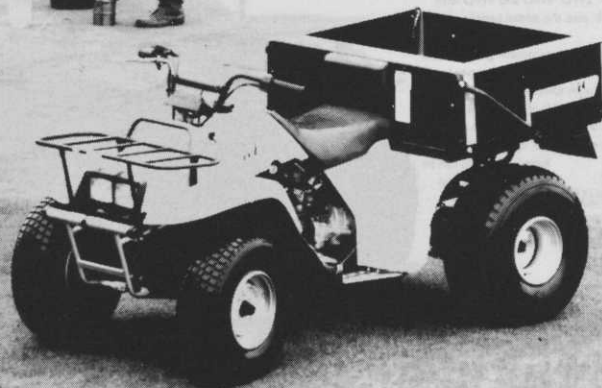
On the matter of USGA Green Section golf greens:

1: I am sure Jim Arthur acknowledges that the specification has no relevance to the choice of grass species – it was developed to overcome physical problems in golf greens and is based on scientific data on the movement of water in soils and their physical properties. The main concerns were compaction, poor internal drainage and the need to get the landing ball to 'bite'. Since these problems occur everywhere the game is played, the specification will have an application in every location.

“As an all-purpose truck the Pro-Hauler is absolutely ideal, it finds new jobs for itself every day”

Mark Root Head Greenkeeper

Northampton Golf Club



Anyone with a requirement for sturdy, go anywhere transport, has to consider the benefits of the Yamaha Pro-Hauler.

Whether for the optional turf tyre model for covering sensitive surfaces, or the standard all-terrain machine, the powerful OHV engine, heavy duty suspension and flexible dual range transmission ensure outstanding performance all year round.

For full colour illustrated brochure and details of your nearest dealer, complete the coupon and send to: Power Products Division, Mitsui Machinery Sales (UK) Ltd., Oakcroft Road, Chessington, Surrey KT9 1SA. Tel: 081 397 5111.

NAME \_\_\_\_\_ Gl.7.91

ADDRESS \_\_\_\_\_

TEL \_\_\_\_\_

Occupation \_\_\_\_\_ Age 16 or under  Age over 16

**YAMAHA**  
**ALL TERRAIN VEHICLES**



# grass roots

2: Initial research by Dr Marvin Fergusson on behalf of the USGA confirmed the minimum criterion for essential rootzone properties, namely permeability, water retention, porosity and bulk density. Hence a laboratory evaluation should be a requirement prior to the selection of the rootzone mixture. Whether sand/peat, pure sand or the 'fen' soil recommended by Jim Arthur for the rootzone mixture, it must meet the criterion prescribed.

3: Contrary to Jim Arthur's viewpoint, water demands by turf grasses in tropical countries do not warrant different rootzone specifications. Warm season grasses have adapted to the greater heat stress and provided the rootzone has the tested minimum water retention capacity it will retain adequate water – the water amount further increased due to the 'perching' phenomena. It is not copious watering that is then required – it is frequent light syringing that is of real benefit in such instances. There are instruments available that can be helpful in monitoring minimum watering needs.

4: Grass will germinate well on most soils including pure sand, even in the UK – the absence of organic matter at the onset is not a vital issue – and the difficulties during establishment can be overcome by frequent light irrigation, covering with inexpensive clear plastic sheeting or mulching during the critical germination period.

5: It is essentially the finer fractions of clay and silt that give the rootzone medium its inherent water retention capacity (referred to as 'buffer' in the article). The considerable organic matter produced by the grass plant also drastically reduces the permeability in the green and contributes markedly to the increase in water retention.

6: As stated by Jim Arthur, a good drainage installation is a prerequisite. While he maintains a preference for 40mm stone (a 100mm layer of 6-10mm stone has proved adequate in most situations in the UK and overseas and can be adequately spread with a small tracking machine) there may be reasons for its use, but research work into the use of filtering materials concludes that the overlying medium should not have an average particle size of more than 5-7 times smaller than the underlying medium. This would apply to the rootzone material overlying the filter or 'blinding' layer as well.

7: Certainly there is scepticism over the success of creeping bentgrass in this country. However, authorities in the breeding of the improved strains maintain that with good management and care it will survive well here. Where management is lacking or soil conditions are unsuitable – and either one or both are generally responsible – it will suffer, but by the nature of its stoloniferous growth, if properly cared for it can be as aggressive as any improved strains of bent grass or fescue. In the past three years Collingtree and East Sussex National have shown that maintenance of good swards are possible and so surely it cannot be condemned for all situations.

Greenkeeper International fully confirms the need for a scientific approach to growing high quality turfgrass and yet so many Clubs follow an established programme with little or no flexibility and virtually no foresight in meeting the problems that can be expected before they arise. If the greenkeeper is motivated he can soon learn from the wide

range of published research data which is freely available.

● *The writer, Gordon Jaaback, BSc Agric., is a member of the American Society of Agronomy and the British Society of Soil Science.*

## From Chris Nicholson:

May I comment on Jim Arthur's article of May last, based on my experiences in Australia, where I have spent the past two years constructing sand based greens and maintaining them with much loving care.

I can confirm that such greens sown with Pennncross are not the sort that can be maintained on a 'normal' small to medium Club budget, rather they demand intensive maintenance, linked with chemical warfare, a first-rate irrigation system, a vast stable of equipment – most of which is foreign to British greenkeepers – and a fully trained and motivated staff of 20 or more. In addition it helps to have a fully equipped workshop and a resident mechanic on site.

A great many courses have had pure sand greens sown with Pennncross put into use by constructors/specifiers and are then maintained like an average course in the UK. A few seasons later the Pennncross is nowhere to be seen – more the result of lack of know-how and low budgets than the Australian weather.

Those entering into this kind of construction without fully understanding the high cost of maintenance do so at their peril.

I think that golf course consultants are often to blame for the mistakes that have and continue to be made. Some have never worked on a golf course, let alone constructed one, and when they tell a farmer that they can design and construct a course with greens sown with Pennncross that will be just like Augusta, they conjure up in the farmer's mind a vision of an Augusta at Nether Wapping or some such place. Failing to explain the high cost of maintenance is nothing short of criminal.

Whilst on the subject of golf courses, many hundreds of which await planning consent as I write, it seems every farmer who owns a JCB wants to build a course these days. 'Old Ted', who once played on the local pitch & putt, will act as consultant during construction and the farm labourer of some 30 years standing, who has a rusting Flymo in the shed, will be the greenkeeper! Like the rest of the proper greenkeeping fraternity, my advice would be 'stick to farming' and let the real experts deal with golf courses.

● *The writer, Chris Nicholson, is the new course manager at Pinner Hill Golf Club.*

**Footnote: Dr James Beard, speaking recently at a seminar given to British golf course architects, suggested that the USGA spec, whilst meeting most of the known criteria for rootzone properties, has resulted in US lawsuits being brought upon architects and substantial settlements have been paid. With full blessing from the USGA he is currently writing a bulletin which modifies the spec somewhat and this will be known as the Texas Specification. In the interim, he suggests that their 1973 specification, or that appearing in his own manual, more accurately meets the desired specification, the 1989 specification having had the rootzone collar eliminated from the design. The Texas Specification will be published in the autumn.**



**'I think that golf course consultants are often to blame... when they tell a farmer that they can design and construct a course with greens sown with Pennncross... they conjure up a vision of an Augusta at Nether Wapping'**

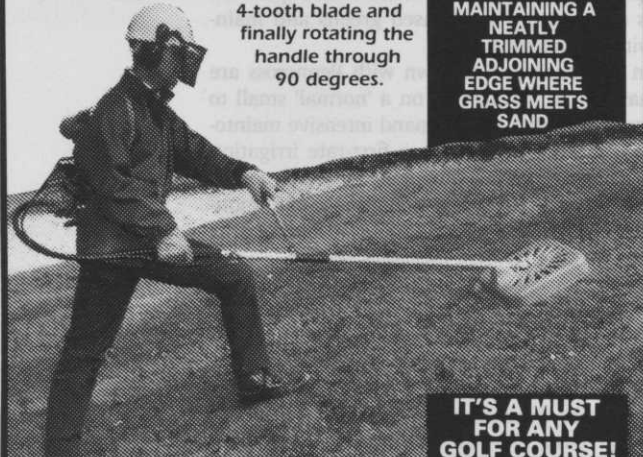
## NIKKEN KNAPSACK BRUSH CUTTER/MOWER

The Nikken fitted with its unique hover hood gives total flexibility and freedom of movement, giving a very neat finish to your bunker slopes and banks.

The operator can either mow from inside the bunker mowing uphill or mow from the top reaching down into the bunker, both achieved with total ease.

Flying sand is no problem with Nikken due to all sensitive components being protected and out of harm's way on operator's back, which only weighs 12lbs.

Edges can be quickly and neatly trimmed by removing the hood, attaching a small 4-tooth blade and finally rotating the handle through 90 degrees.



**THREE PROBLEMS WITH ONE SINGLE SOLUTION**

■ **SUCCESSFUL MOWING OF STEEP BANKS & SLOPES THAT COVER MOST BUNKERS**

■ **NO ENGINE FAILURE DUE TO FLYING SAND THAT CAUSES MOST REGULAR MACHINE BREAK DOWNS**

■ **MAINTAINING A NEATLY TRIMMED ADJOINING EDGE WHERE GRASS MEETS SAND**

**IT'S A MUST FOR ANY GOLF COURSE!**

Send for details now to: **DIXON & HOLLIDAY LTD**  
Unit 4, Graham Potter Estate, Beech Avenue, Swindon, Wilts SN2 1JY  
**Tel & Fax (0793) 513214 Sales (0462) 700547**

AD REF 214

# Pattisson



**Manufacturers & Suppliers of Golf Course and Driving Range Equipment.**

Practice Mats to Ball Collectors.

Hole Cups to Tee Markers.

The Complete Range

Send for Catalogue

## PATTISSON & CO LTD

342 Selbourne Road, Luton, Beds LU4 8NU

Tel: 0582 597262. Fax: 0582 505241

AD REF 35

# GREENKEEPER

*International*

## Editorial Comment

### Garbage of the so-called 'expert'

Nothing is more likely to cause an editorial apoplexy attack than the appearance in print of garbage camouflaged as expert opinion. Thus, along with countless others, I took exception to comments appearing in a turf magazine recently, made by a supposedly learned man – an 'agricultural consultant' no less – who took it upon himself to declare that "the art seems to have gone out of greenkeeping" and that, "at the heart of the matter, even 'basic' knowledge is lacking in greenkeepers". This vitriolic offensive continued with his questioning whether the 'right' training courses exist, and ended with his 'original-and-oh-so-clever' idea that he sees a need for a recognised British national qualification and a co-ordinated group of advisers to organise greenkeeper training.

Where has this man been living? Has he never heard of 'The Way Forward'? Is he really blind to the multitudes of specialised colleges throughout the British Isles, busily and effectively training young greenkeepers in the art and craft of an honourable profession?

Is he, I wonder, even remotely conscious that hundreds of students pass into their chosen career each year with City and Guilds, Scotvec, B.Tech N.D.'s or even higher qualifications in Sports Turf Management or Turf Science, their training placing emphasis on understanding soil characteristics, drainage, irrigation and construction, the building and maintenance of greens, tees and bunkers, the control and care of a wide variety of sophisticated machinery, the skills and technical knowledge necessary to ensure that pesticides and fertilisers are safely and accurately applied?

As if his assault on British greenkeeping isn't enough, this ardent four times a week golfer thinks it would be a good idea to have golfers subscribe to a "good greenkeepers' society". Step forward for National Health eye test Mister know-it-all, your reading is clearly not what it might be. Far from being incensed, perhaps we should pity one so completely untouched by the publicity machine, and so blind to the realities of maintaining standards in the game he purports to care so passionately about.

I'm prepared to bet our radical anti-hero has never heard of the R&A's Joint Golf Course Committee, which brings together the very best minds, the policy shapers, bent on ensuring a sound future for all our golf courses. The Home Unions, the Sports Turf Research Institute and our own British and International Golf Greenkeepers Association are, I'll lay money on it, total mysteries to our critic. Taken a step further, I'll wager he's oblivious to the huge problems caused by cantering herds of society golfers and probably thinks over-play is a kinky form of bedroom game. Compaction? Ah, yes, you can almost hear him say, isn't that some sort of new record disc?

If there is one faint glimmer of hope, it is that he 'suspects' (only suspects, mind you) training courses are there, but that Club committees fail to recognise the benefits good training can have. Yes sir, fine training courses are there in great profusion and yes, the committee think-tanks do very often fail to see how training will benefit their course. The sadness is that it is often left to greenkeepers themselves – by any standard not over-paid – to finance their own academic advancement. It is to their great credit that so many of them do.

This man's real worry, however, is that at all levels – players, officials and greenkeepers – he thinks there's a lot of rubbish talked about how to improve golf courses. If we accept the premise that two out of three isn't bad, and thus delete the greenkeeper from his 'rubbish' list, we can nevertheless see still more toro manure added to the pile, this time from one 'expert' who ought to know better.

DAVID WHITE

# OPEN

## Invitation

Tom O'Brien was instantly impressed with Royal Birkdale when he walked the course for the first time 13 years ago. At the age of 48, he accepted the Head Greenkeeper's post in what could have been his last opportunity to handle an Open Championship, as well as his first. JOHN NELSON met the man who is again preparing his course for a world-class test of golf

**T**om O'Brien, B.E.M., is the name. On his shoulders rests the reputation of Royal Birkdale for providing a world-class test of golf at The 120th Open in July. It could not be in better hands.

Tom's the head greenkeeper and this will be his second Open preparation. He had his baptism in 1983 and although it was an experience not without its traumas, his course was universally acclaimed. Now, once again, he's in the hot seat, under the spotlight. What kind of man is he? How has he gone about preparing the course? Was it a benefit having done it before? How can other head greenkeepers gain from such experience?

Golf and greenkeeping have been his whole life. Indeed, he grew up as part of the Scottish tradition whereby golf was the natural thing to do. Everyone played and virtually every village had its own course. He comes from Muirhead, Glasgow originally and on leaving school immediately started a career as a greenkeeper. He joined his local club – Mount Ellen – as the junior member of its green staff.

Mount Ellen is a downland course and Tom joined a team of four. He stayed 17 years and there he learnt his craft – as well as marrying a local girl and raising two sons. In those days – as always I guess – it was the head greenkeeper who determined whether or not you made the grade. Tom was lucky. The Mount Ellen head insisted on the highest standards, taught Tom all he knew, and made sure he got a thorough training. It was all practical training and know-how, of course. Tom didn't have the opportunity for studying college theory, but this didn't turn him against academic learning or against those who were college trained. He accepts the academic view – except when it goes against common-sense! He was taught always to listen to other views – and then make up his own mind.

Anyway it paid off. He was able to join the ranks of head greenkeeper and get his own course. It was not initially →



**UNDER  
SCRUTINY:  
CHAMPIONSHIP  
COURSES**





→ in Scotland, but France, where he became 'superintendent' at a USAF Base course near Paris. He liked it there, but eventually felt the urge to return to Scotland. He successfully applied for the head greenkeeper post at Gullane, with its three courses. This was his first exposure to links courses and he was, and remains, full of praise for the Gullane links.

He also got to know Muirfield and its head greenkeeper. Muirfield was a current venue for The Open and the Gullane links were used for qualifying. It was at Gullane that he first began to have ambitions to handle an Open Championship. He realised, however, that this would mean leaving Gullane and although he speculated about Muirfield he decided it would be foolish to wait for the vacancy of head greenkeeper to occur since there was no guarantee of his getting it. He would have to look elsewhere.

Then as now, there were just seven Open Championship venues, four in Scotland and three in England, so the choice was limited. He accepted the need for patience and resigned himself to possibly a long wait.

The first to become vacant was Royal Birkdale in 1978. Tom discussed it with his wife, applied – and the rest, as they say, is history. He was 48, and felt this could well be his last opportunity – as well as his first!

Arriving early, he walked the course and was instantly impressed. Notwithstanding the splendour of Gullane, he'd never seen a more inviting course and it instantly appealed. 'You can tell immediately' he said, 'if a course is for you', and Royal Birkdale was. He felt at home with its sense of feel, of visual appeal and scale, and it all felt right.

Tom hadn't rated his chances over highly. He lacked academic qualifications, but had 33 years experience of greenkeeping, caring for top class links courses as well as downland and parkland courses and, of course, he was a successful head greenkeeper.

He got the job and he's never looked back. He's enjoyed every minute and the family immediately took to Southport where they've settled. When the day comes to retire, he'll stay there.

He was all set to realise every greenkeeper's ambition – to handle an Open Championship. This was to be in 1983, so he had ample opportunity to get to know his course and its idiosyncrasies – and to worry about it, of course. In the event – apart from one hiccup – it all turned out alright. But he found it a humbling experience. 'The realisation comes' he said, 'that you've been entrusted with ensuring that your course stand up to scrutiny – that it provides the best test for the world's best golfers'.

The R&A help beforehand by inviting head greenkeepers from all Open venues to be its guests at prior Opens, and in Tom's case he was to visit four other venues before his own ordeal.

He now thinks he was perhaps a bit too cautious with his cutting of the greens in 1983 and also revealed that it was during this, his first Open, that he suffered his greatest



**He was all set to realise every greenkeeper's ambition – to handle an Open Championship. This was to be in 1983, so he had ample opportunity to get to know his course and its idiosyncrasies – and to worry about it, of course**

upset. A 'phone call in the early hours told that the 6th green had been sabotaged. Could he come at once? He was collected by police car.

Vandals had dug it up in six places to a depth and width of over a foot and slogans had been spray painted all over the green. A protest group claimed responsibility. Tom inspected the damage by torchlight and made plans for a 4am start to patch things up. But by daylight it was obvious that it would take months to restore the green to its former glory. It must have come close to breaking Tom's heart. He said he'd never felt so low.

In the event, start of play was delayed by just 20 minutes – to allow the repair work to be completed. The tee was brought forward 30-40 yards to make it possible to carry the cross bunkers and then play a short iron to the green. Damaged areas were designated G.U.R. and two undamaged avenues allowed players to replace their ball to hole out. Part of the fringe was cut to make it part of the putting surface. Five white slogans were repainted green to make them less legible and the BBC agreed not to give any TV exposure, thus minimising the publicity sought by the vandals.

The R&A subsequently stated that it would meet any cost involved and give any assistance required in restoring the green to the very fine standard of the other 17 greens.

Tom explained his preparation for this year's Open – especially the greens – and his thinking behind it. He was somewhat sceptical about media talk that there was a special programme. 'Royal Birkdale', he said, 'is a members' course and they expect to be able to play on it every day.'

So his programme is special every day. The course must be maintained in first class condition 365 days a year – including Christmas Day! Unlike Augusta, the course is not closed for work to be carried out without interruption. Nor is there the luxury of a few days grace once The Open is over. People queue to be first to play the course the very next day.

It's all very well for tournament players to say that the greens will be great for members when they leave. He appreciates the need for greens to be at their peak from the beginning of the tournament, but they don't have to maintain them afterwards – day in, day out – or carry the can if he loses them afterwards. The same applies to tees, for although some are created just for The Open, many are not. Many are members tees of limited size, and used continually up to, during and immediately after by members and visitors. Some holes would lose their character if played from new tees, the 9th being a good example, for they would have to remove the legendary marker post landmark for the drive!

Having said this, Tom readily admitted that he took his preparation for The Open very seriously. His approach is systematic and includes aeration, feeding, minimum watering and measured grass cutting.

Commenting on the quality of Birkdale sand, he said it was very fine, didn't retain water and therefore must be kept



### Royal Birkdale's working calendar

**AERATION:** Throughout the year Tom O'Brien aerates the greens weekly, stepped up at the back end of the year to 2/3 times a week.

**TOP DRESSING:** He dresses the greens once a month before The Open with a Buxton sand of a consistent grade and particle size, specified by the STRI.

**VERTICUTS:** Every two weeks until two weeks before the tournament.

**TURF GROOMING:** He uses Turf Groomers all the time. The height is adjusted according to grass growth.

**GRASS GROWTH:** Greens are cut every day. In January, February and March there isn't much growth because the turf is links grass and east winds retard development. It's more a case of trimming than cutting – he calls it 'topping'.

**GRASS CUTS:** He cuts in two directions at 90 degrees. During The Open week he cuts the greens three times a day – once early morning, twice at night.

**LENGTH OF CUT:** Before The Open – three-sixteenths, during The Open – one-eighth of an inch.

**WATERING:** Yes, he uses water, but only if absolutely necessary.

damp but not swamped. This, he emphasised, is where local knowledge was so important – as it was with the weather – and why he would stick with his hard-won knowledge about his own course and not be overawed by those who, whilst undisputably expert in their own fields, lacked detailed local knowledge.

The variable and unpredictable local weather proved that a rigid programme wouldn't work. To plan to carry out the same jobs every Monday morning would result in complete frustration. Thus he'd learnt to adapt to what each day brought with it.

Asked if the snow in February, which stayed around, had affected his schedule, he opined that it had been a blessing in disguise. It allowed the ground to rest and there had been no ill-effects, the often magnifying action of sun on snow causing no burn-up.

Happy with his preparation up to the start of the golf season, he'd been very gratified when the R&A at their first Open preview for the media, held in March, declared themselves very satisfied with the course.

But then he'd had to cope with a prolonged drought. Throughout May there'd been the least rainfall for 100 years. The Weather Centre reported a record low of 8.4mm for the month and there was no sign of rain to come!

Nonetheless conscious that he would be judged by his greens, he drew a contrast between Birkdale and Augusta, where the one topic of player conversation would be the greens and their speed compared with previous years, by saying that his test of golf started with each tee and the winner would be the one who played the best golf from tee to green as well as putting the best.

His greens, he promised, would have enough pace to pose a real challenge although they would not be as fast as Augusta. Nor did they have Augusta's severe undulations – in fact they appear on TV as seemingly bland and flat. But they do have their own subtleties – ask any member!

It's his policy to make all the greens the same speed, but he must work with the natural conditions and these vary for different greens. 'The 6th is probably the fastest' he said, 'but take, for example, the 2nd and 8th and compare them.' The 2nd is sheltered from the sun and protected from wind by trees, whereas the 8th is exposed and unprotected. He confessed he didn't use a stimpmeter or pentrometer but had his own ways to measure speed and firmness.

He smiled with gentle irony as he told of the extra staff drafted in for The Open. 'If they're necessary now, they're surely necessary all the time, aren't they?' he asked.

A golfer himself, he thought it helped him as a greenkeeper. He plays much less now and his handicap has risen from nine to nearer 18. He doesn't play at Royal Birkdale although he started off that way, finding he didn't enjoy his golf as he was always seeing little things that demanded attention. Now he plays at Southport Old Links and by playing away from home any perceived problems are not his, and he enjoys his golf.

He is looking forward to his second Open Championship, not least because he meets greenkeepers from other Open venues and BIGGA members who come to help him keep the course in good order during the event. For their part I am sure they also will be looking forward to meeting Tom. I doubt if any other greenkeeper is held in higher esteem than Tom O'Brien, Head Greenkeeper, Royal Birkdale Golf Club.

● The author, John Nelson, is a member at Hillside, one of the four Open qualifying courses.

## JON ALLBUTT on the disposal of chemical containers and tank washings

As NPTC examiners we listen as the Foundation Module Test candidates recite the litany of options available for disposing of old chemicals, used containers and tank washings. It sounds impressive enough until you look closely at those options and try to see how they might work on a golf course.

Take for example the disposing of used containers. The problems of finding a suitable site for burying are so great as to make this option unworkable on a golf course, similarly the option of burning certain types of container is also a non-starter. Most containers find their way into a skip or on a rubbish tip... try explaining that to the Inspector when he or she visits and starts asking those awkward questions! So what is the best way of dealing with the problem?

All containers must be rinsed and the rinsings put into the spray tank. The empty containers must then be rendered unusable again, with puncturing in several places being the best way of ensuring that they are not re-used for carrying petrol, or worse! The containers should then be kept in a safe place until there are enough to justify a trip to the council tip, enquiring of your local authority first to be sure you take them to the right place. An alternative strategy is to use the disposal services offered by the manufacturer or distributor – both Chipman and Envirogreen (Maxwell Hart) offer such a service.

There are no options available for disposing of unwanted concentrate. An authorised waste disposal contractor is the only route available for this job. Remember, it is a breach of the Pesticides Regulations to store non-approved pesticides and this includes old wood preservatives.

The options for disposing of tank washings also become a problem when looked at in the context of the golf course. The options of constructing a soakaway or using a 'designated area' fall down when you approach your local office of the National Rivers Authority. In general you can expect your local official to be less than enthusiastic! There are units available that will filter the pesticides out of the washings, though these are more suitable to those who use much more pesticide than we do and are also quite expensive to buy.

It is possible to have a specially constructed wash down and rinsing area that drains into a tank which is periodically pumped out and disposed of by a licensed contractor. You will need to take care that rain does not fill the tank by fitting a cover over the drain when not in use. The best method is to spray out the washings on an area compatible with the product label approval, for example if greens have been sprayed with a selective weed-killer, the rinsings and tank washings can then be sprayed on the fairway. In certain circumstances the tank washings can be re-used for another spraying job providing the same product is to be used again. If the washings are to be re-used they must be kept in a sealed container properly labelled to avoid misuse.

The new edition of the Amenity Code of Practice for the use of Approved Pesticides is in the process of being revised and reprinted. It will contain advice on how the job of using

# How to create your own policy on handling chemical waste

some pesticides is now subject to risk assessments under the COSHH Regulations and having a copy of this Code of Practice is an essential first step in forming a policy on the handling of chemical waste. Copies will be available from the NTC in the autumn, with details appearing in this magazine.

There is a lot of concern about the pollution of water and the NRA is responsible for enforcing the new Regulations under the Water Act and the Pesticides Regulations. The very new Environment Protection Act will also have an impact for users of potential pollutants of any kind.

To avoid the risk of prosecution under one or all of the Regulations now in force, make sure you have a clearly written policy on how you will tackle the problem of disposals. Before you establish your policy make a draft and consult those listed in the Code of Practice. After their comments have been taken into account, introduce the policy to your staff and make sure they follow it. It will be necessary to carry out periodic checks to make sure the policy is being carried out correctly – don't assume that staff will follow it to the letter!

● Jon Allbutt will be presenting his highly informative lectures on COSHH and the Food and Environment Protection Act at BIGGA Management Courses in November.

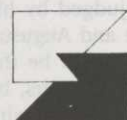
## GOLF COURSE SIGNS



Designed to your own specification. Strongly manufactured. Maintenance free, chip resistant, club motif if required.

Choice of colours

Ring now and just let us know what you need



A C & M Birch Ltd  
Golf Signs  
Unit GH1, Platts Lane,  
Burscough, Lancs. L40 7TE

Telephone: Alan Birch 0704 896177/892997

AD  
REF  
58

■ Your informative reply to Barry Moggridge's letter (March issue) regarding employment in the USA prompts me to pose a similar question regarding employment in Canada.

My work and qualifications are near identical to those of Barry and, like him, I'm travelling abroad in the autumn for a holiday. My destination is Toronto, where I have aspirations of obtaining work in the near future.

After reading your reply I became concerned about the 'green card' issue and whether such restrictions apply to Canada.

Please advise me and if possible give information on jobs available or organisations I may contact.

**PAUL McGRAIL** Ashton-in-Makerfield Golf Club

*Discussing Paul's request with the Canadian High Commission, I learned that similar restrictions to those in the USA also apply. A Canadian Country Club employer seeking to recruit emigrant staff must first satisfy the Canadian Employment Centre that stringent efforts have been made to fill a specific post with a native born Canadian and that such efforts have failed. Only when this is proved beyond doubt will the Canadian High Commission in Britain entertain an application, which must then be accompanied by an "Employer Validation Certificate", in effect a form of employer sponsorship. Exceptions are made for the recruitment of specialists in world-wide short supply and include such as nurses, midwives and some doctors. Having a blood relative resident in Canada does also help, though is by no means a guarantee. With the Canadian turfgrass industry applying similar management techniques to those employed in the USA, it seems the odds are stacked against an emigrant applicant.*

■ I feel I must respond to 'Mr Scargill's' letter in the April issue. First, I do not think the committee set-up at Mr Carr's Club has anything to do with attending lectures. Until this year all Northern Section lectures were held in the evening, but this year we tried afternoon lectures and they were poorly attended. Of course we greenkeepers work strange hours, but surely no work is pressing enough to keep a greenkeeper out on his course at 8pm on a January evening!

Second, does anyone, or should anyone, get expenses for attending lectures? I certainly do not and would not expect payment for what is partly a social outing anyway.

Third, concerning travel from remote areas: we've had members travelling from as far afield as Hull and Lincoln, which is a credit to them for making the effort.

As for waiting 13 years for a toilet to be installed, where does the fault lie? It is the responsibility of every employer BY LAW to provide washing and toilet facilities for staff members. If Mr Scargill's toilet flushes I assume mains water is available, so the solution to proper washing – a hot water geyser costing about £50 – is there. Where, I wonder, does Mr Scargill wash after spraying? What would happen if there was a spillage? It is not only the fault of the Club, but also the responsibility of the head greenkeeper to ensure these facilities are provided for his staff. Committees are sometimes blamed for things of which they are unaware and it is incumbent upon head greenkeepers to present in a proper and professional manner the details of their employers obligations.

Mr Scargill, has your Club got a written Safety Policy document, a visible copy of the Factories Act, Contracts of Employment, copies of Insurance Liability, protective clothing, first aid kits, fire extinguishers, an accident book, a spraying log book, COSHH assessments, chemical inventory, safety signs and proper chemical storage? All these MUST be provided, to be seen and used, AT EVERY PLACE OF WORK. If yours is not the case, I suggest a written report to committee may help, or a telephone call to your local Health and Safety Officer.

**BOB LUPTON** Secretary Northern Section

■ The advent of imported bark fumigated with the pesticide methyl bromide

# Letters

is causing increased anxiety amongst both purchasers and suppliers of naturally processed home produced barks. As a major handler of solely British bark from sustainable resource forests which is naturally processed, I feel it is important to draw attention to this controversial issue.

Imports of bark are banned under Britain's plant health organisations. However, it appears that if it is proved to the Forestry Commission's satisfaction that the product does not present a plant health risk to British forests, the Commission has the power to grant licences to import normally prohibited material. So, to ensure there is no such risk, the imported bark is fumigated, before being landed, with methyl bromide gas to kill any insect or fungal infestation.

As I see it, this is an act of environmental vandalism. It is contaminating an otherwise sound natural product with a poison, a halogenated hydrocarbon – the same family in fact as CFCs. Methyl bromide is toxic and leaves residues on organic materials and bark thus treated cannot be accepted as wholly natural. Certainly the Soil Association will not endorse it as such.

In the current climate of environmental awareness untreated British bark must be the preferred product, but how can the buyer know which is treated with pesticides and which is not?

We feel strongly that products should pass an environmental audit to prove them ecologically sound in terms of origin, process and use and guarantee that our bark is free of any chemical additives. It is hoped that those professional companies with sound environmental ethics will make similar statements. Buyers should ask for written guarantees to state that the bark has not been treated or mixed with methyl bromide or any other harmful chemicals.

Imported bark may make economic sense but environmentally, while it is chemically treated, it is simply unacceptable.

**JOHN LATTER** Melcourt Industries, Gloucester

■ The article appearing in your April issue (Keith McKee on 'Nitrogen versus other nutrients') gives rise to a point on which I must take issue. Because fertiliser rates are the subject of argument, and if printed articles, by Keith or others in the fertiliser industry, are not crystal-clear and accurate, how can the poor greenkeeper, struggling with a flood of information, be expected to discount mis-information?

Okay, Keith would say 'Yes, everyone knows I meant P<sub>2</sub>O<sub>5</sub>'. But he and your excellent magazine (as a source of reliable information) should be as near perfect as possible. The expression of phosphorus and potassium content needs care in the use of the elemental symbols P and K. They can be used by themselves in text as abbreviations for phosphorus and potassium respectively. But when used with numerals, as in '5 kg/ha P' or '6 oz/yd 2 K' they relate (or should relate!) to the quantity of the pure element, as opposed to the oxides P<sub>2</sub>O<sub>5</sub> (phosphate) and K<sub>2</sub>O (potash) which are the usual forms for expressing fertiliser content. The factors for converting units P to units P<sub>2</sub>O<sub>5</sub>, etc., are:

$$P \times 2.29 = P_2O_5 : P_2O_5 \times 0.44 = P$$

$$K \times 1.21 = K_2O : K_2O \times 0.83 = K$$

If your magazine was not so good I'd not bother. It's only because of the trust it generates that I want to see reliability on this point!

**JOHN SHILDRICK**

*John Shildrick is Chief Executive of The National Turfgrass Council.*

## Colt & Co.

Golf Course Architects

by  
**Fred Hawtree**

Foreword by

Sir Denis Thatcher, Bt., M.B.E., T.D.

Cambuc Archive

Publishing imprint of Hawtree Golf Course Architects & Consultants 3/5 Oxford Street Woodstock Oxford OX7

The full story of Harry Colt whose talents enriched five 'Open' layouts, Pine Valley, Sunningdale, Wentworth, etc., etc.

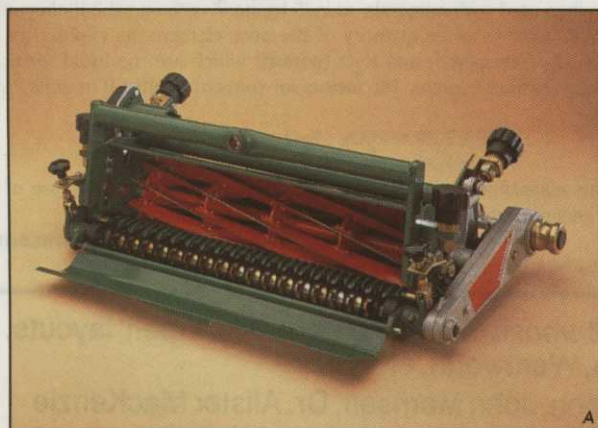
- + His partners Hugh Alison, John Morrison, Dr. Alister MacKenzie
- + Their war-time letters & post war problems 1939 - 1951
- + An appreciation of Colt's legacies to golf and posterity
- + A selection from contemporary records and his own essays
- + A listing of over 300 Colt, Alison, Morrison, MacKenzie courses

224 pages. Case bound + 16 pages separate booklet.

Due out 14th July. Price £28.50 + £1.50 (UK p/p). US\$56.50 + \$6.50



THE NEW GT RANGE



A The micro-precision Greens Unit with Verti-Groom attachment.  
 B The GT Champion's electronic control panel.  
 C 3-way adjustable seat with flip-up armrests



It takes years to perfect the greenkeeper's art.

But you can still pick up a few useful pointers in a week. Particularly if you spend it at the wheel of a new Ransomes GT.

If you'd like to try it, you only have to ask.

Choose the GT Champion, with its second-generation electronics, or the GT Classic, with simple but effective hydraulic controls.

See for yourself the perfectly-groomed finish achieved

**THERE'S NO SHORT CUT TO PERFECT GROOMING**





the air oxygen can no longer keep the soil sweet. Locking oxygen out of the soil...  
 to supply the plant's requirements. The grass roots are now in a hostile environment and start to retreat towards the surface. The plant can no longer...  
 this is chronic.

if nothing is done to correct the basic problem it becomes tempting for...  
 to treat the symptoms. More water is required to keep shallow roots...  
 grasses alive. Since shallow roots find it difficult to obtain food, fertilizer is...  
 the soil to dry.

the root system of the plant. This causes a root break, where the root...  
 within their own layer of thatch. This causes a root break, where the root...  
 to keep the grass alive and so the grass continues to grow.

to reduce unnecessary maintenance and pay traffic is more obvious to us...  
 to do up greenkeepers' maintenance...  
 to reduce unnecessary maintenance and pay traffic is more obvious to us...  
 to do up greenkeepers' maintenance...

by the 9-blade Greens Units, with their Verti-Groom

attachments to control lateral growth and thatch.

And try for size the superb new driver's seat:

generously upholstered, fitted with flip-up

arm-rests, and adjustable every which way.

For all the details of both

machines (and a week's loan of one)

simply ring Trevor Knight at

Ransomes, or return the

coupon. And see how, just for

once, you can take a short cut to perfection.



We offer soil analysis and formulate and apply...  
 appropriate soil conditioners. With associated...  
 full service of fertilizing, verti-training, soil...  
 conditioner application and tree root feeding...  
 is offered.

The proven Tertill system goes 30in deep to...  
 ameliorate areas of deep soil compaction and...  
 poor drainage - without damaging the surface...  
 Soil conditioners and root feeds can be...  
 incorporated by the Tertill.

Please send me full details of the new Ransomes GT range, and ask my local dealer to contact me to arrange a week's trial without obligation.

Name: \_\_\_\_\_  
 Position: \_\_\_\_\_  
 Club: \_\_\_\_\_  
 Address: \_\_\_\_\_

GI.7.91

Ransomes Sims & Jefferies Limited  
 Ransomes Way, Ipswich, England IP3 9QG  
 Tel: (0473) 270000 Telex: 98174 Fax: (0473) 270032



(WELL, ONLY ONE.)

**Patchy turf.  
Dying trees.  
Shrivelling shrubs.**

**The problem  
lies in the soil**

Soilcare offers a complete service to cure causes of poor growth in turf, trees and shrubs.

We offer soil analysis and formulate and supply appropriate soil conditioners. With associates, a full service of Terralifting, verti-draining, soil conditioner application and tree root feeding is offered.

The proven Terralift system probes 30in deep to ameliorate areas of deep soil compaction and poor drainage – without damaging the surface. Soil conditioners and root feeds can be incorporated by the Terralift.

Whatever your soil-borne problem, Soilcare may solve it – call us now.

**The answer lies  
with Soilcare**



**SOILCARE**  
(incorporating Colin Pryce Terralift)

Unit 3, Bush Farm, Nedging, Ipswich Suffolk, IP7 7BL  
Tel: (0449) 741012 Fax: (0449) 741012

AD  
REF  
46

# A VERY

How to win the battle against compaction:  
a Greenkeeper International special report

One of the major battles every greenkeeper must win if he is to gain the respect of his employers and Club members is the battle against compaction. We hear so much these days about compaction and its associated problems that it is important for our members to understand precisely what is meant by compaction, how it affects our courses, and what can be done to alleviate it.

First, let us identify the problem. Plants have basic requirements if they are to thrive: food, water, warmth and light are all obvious and readily spring to mind. In addition to this they require the right growing medium. This usually means soil. Soil should be open and contain a high proportion of air as healthy plants require oxygen within the root zones. These air gaps and pockets provide the passageways through which water can easily move and be stored. This aids both drainage and irrigation. It is also through these gaps that the plant pushes its root systems.

Compaction exists within the soil when it has been pressed together, causing these air gaps and pockets to close. As soon as compaction starts, the micro-environment within the soil moves in a downward spiral. Having closed the air gaps, oxygen can no longer keep the soil sweet. Decaying organic matter gives off methane, which will now remain locked in the soil, making it sour. Water can no longer drain through the soil, which adds to this problem as it becomes stagnant.

Neither can the water be drawn up through the soil by capillary action to supply the plants' requirements. The grass roots are now in a hostile environment and start to retreat towards the surface. The plant can no longer thrive and will begin to lose its healthy green colour. The technical term for this is chlorotic.

If nothing is done to correct the basic problem it becomes tempting for Clubs to treat the symptoms. More water is required to keep shallow rooted grasses alive. Since shallow roots find it difficult to obtain food, fertiliser is also applied, and as every greenkeeper will tell you, we now have the classic situation for a build-up of thatch. If allowed to continue, the thatch will cause the soil to dry out even more.

The root zones will become even more shallow until they almost only exist within their own layer of thatch. This causes a root break, where the turf on the greens is often not attached to the soil layer at all. More water and more fertiliser is required to keep the grass alive, and so the spiral continues.

By now the ideal environment has been created for the build up of various bugs and diseases which tend to survive in the sour damp micro-climate of thatch. The most obvious of these is fusarium, although there are several others which can be just as devastating. At this point many a strong man has been known to go weak at the knees, but let us not despair. Rather let us ask ourselves a few questions which may help us to avoid getting to this point, or if we are already there, help us to reverse the cycle.

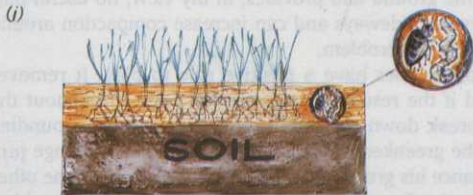
The first question is: 'What causes compaction?' The answer is traffic. Traffic through construction, traffic through maintenance and traffic through play. While there is little that may be done about traffic in construction, there is a great deal which can be done by greenkeepers and the Club to reduce unnecessary maintenance and play traffic. It seems obvious to us that players and maintenance vehicles should be kept to the proper paths and walk-ways. However, greenkeepers often complain that golfers ignore barriers and signs, but I wonder how often they are set a bad example by green staff sometimes riding unneces-



# PRESSING PROBLEM



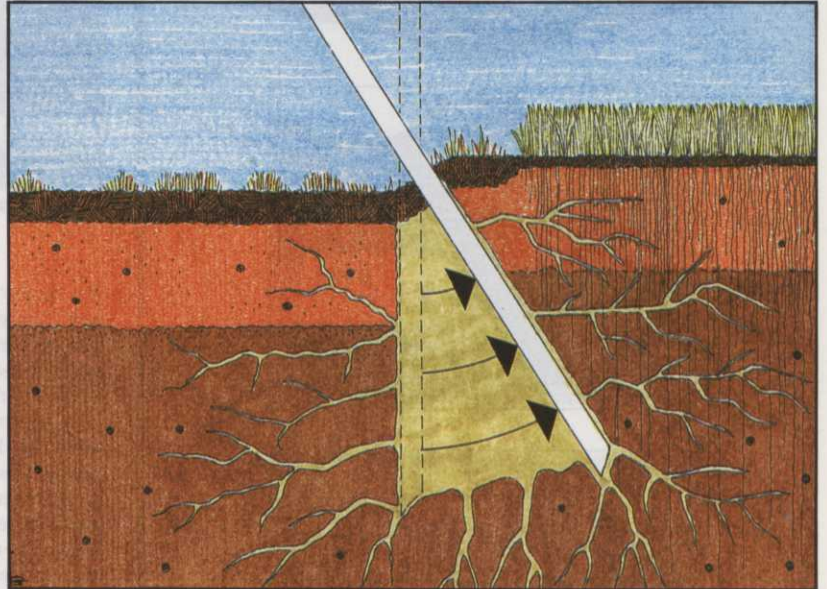
Air channels are closed; the air is forced out and water can no longer move freely in the soil



A micro climate is created within the thatch layer where pests and diseases thrive

sarily over the grass on tractors and turf maintenance vehicles? Good communications are important, and it may be that greenkeepers need to explain just how much damage can be done if selfish players do not obey the course rules.

Having said all this, it has to be acknowledged that most



The action of a Verti-Drain

courses are being subjected to an amount of play which is far in excess of anything imagined even ten years ago, let alone when many courses were built, possibly over a hundred years ago.

Having identified compaction and its causes, what can be done to alleviate the problem? The answer is a great deal.

## E & S SPORTSGROUND CONTRACTORS

### TOTAL GOLF COURSE MAINTENANCE

- Verti-Drain
- Drainage
- Sand Spreading
- Irrigation
- Sand Slitting
- Construction
- Overseeding

Contact: Richard Veitch  
E & S Sportsground Contractors  
39 Knox Green, Binfield, Bracknell, Berks RG12 5NZ  
Tel: (0344) 860690

## FOR HIRE



### TORO HYDROJECT Turf aeration 'the easy way'

Inject new life into your greens without disrupting the playing surface.

D & E Turf Maintenance of Shildon  
0388-772844 • 0836-376944

+++++NATIONWIDE SERVICE+++++

AD  
REF  
248

AD  
REF  
323

# CORE!

## WHAT A MACHINE



Multi-Core TM 1000



Multi-Core Contractor



Multi-Core Green Keeper

### CORE DOWN TO NEW DEPTHS WITH

## MULTI-CORE

- Durable – manufactured from heavy materials
- Low maintenance – few moving parts to go wrong
- No grease points
- High output – up to 1.5 acres per hour (TM 1500)
- Deep coring – down to 5"
- Versatile – choice of tine heads
- Unique mini-tine – frequent use helps control dry patch
- Very precise hole pattern – up to 1174 per sq. metre

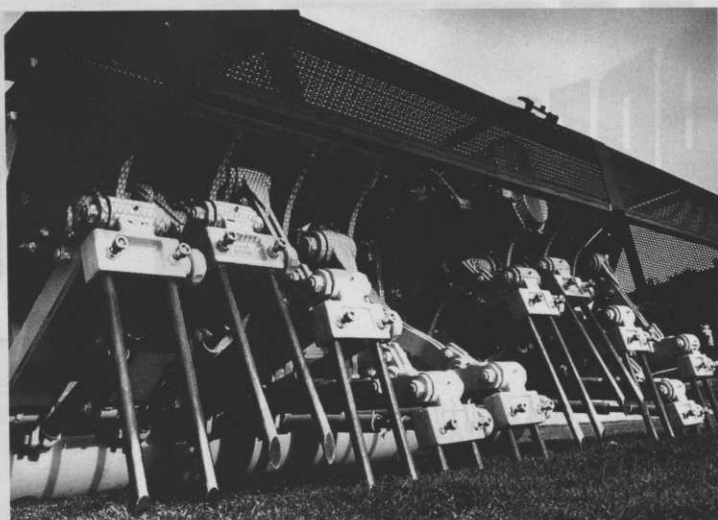
### HIRE OR BUY FROM OUR NATIONWIDE DEALER NETWORK

NEW 1.5 METRE TRACTOR MOUNTED MODEL AVAILABLE SEPTEMBER

### MULTI-CORE EUROPE

Halfway Bridge, Petworth, West Sussex GU28 9BP  
Tel/Fax: 07985 535

## CALL FOR A DEMO TODAY



The Verti-Drain – a powerful tool

In the past many different systems of cultivation have been devised and used. These include solid, hollow, and slit tining. Solid tining is simply driving a spiked shape tine into the ground and provides, in my view, no useful purpose whatsoever. It forces soil sideways and can increase compaction around the hole rather than alleviate the problem.

By contrast, hollow coring does have a positive role to play. It removes some thatch and soil and if the resultant holes are left open throughout the winter, frost again can break down the hole sides, helping the surrounding soil to open up. Should the greenkeeper wish to conduct a soil exchange programme, because for instance his greens have been built on clay or some other unsuitable matter, he can simply remove the cones and replace them with a suitable top dressing. The depth of hollow tining is of paramount importance when carrying out such an operation, and a machine capable of penetrating the soil up to eight inches or more should be used.

Slit tining also has its benefits. Deep slitting in the autumn connects the surface of the soil to the drainage layers. This helps to take away any heavy winter rain and, in the same way, fine slitting in the spring and summer ensures that rain and irrigation soaks through the turf rather than being shed sideways by the thatch. Slitting is also a useful means of root pruning rhizomes and stolons.

In recent years the appearance of the Verti-Drain has transformed compaction relief by using its unique shatter tining action. This machine penetrates the ground up to 16 inches deep, piercing any pan which may exist. The tines then heave the soil, cracking up the compaction before they are withdrawn. This heaving action lifts the soil in a uniform manner, the lift representing the amount of air that has been incorporated into the ground. Like most machines, the Verti-Drain has to be used conscientiously, and soil conditions need to be taken into account. The operation should be undertaken at an intensity of hole spacings and to a depth which is consistent with the greenkeeper's maintenance programme. It may be that the greenkeeper would wish to start at, say, four inch centres going down to a six inch depth and progressively increase the depth as well as decrease the distance between centres. Such a programme may well be necessary if the greens have a root break. In such circumstances the surface of the soil needs to be opened up so that the grass carpet can anchor itself to the soil before a more vigorous treatment is attempted.

Whichever method of compaction relief is used, it is important for greenkeepers and Clubs alike to realise that the benefit is not indefinite, and that it will be necessary for them to continue with their compaction relief programme as long as their courses are extensively played.

Finally, let us consider our objective, which is to have a healthy grass cover despite the excessive wear and possible drought conditions which we are experiencing. Open friable soil should enable the right grasses to put down deep rooting systems which can obtain moisture in all but the worst drought conditions. These deep rooting grasses should be able to sustain heavy wear and regenerate growth after intensive play. Using the right machinery at the right time can assist every greenkeeper in achieving this objective.

**'Whichever method of compaction relief is used, it is important for greenkeepers and Clubs alike to realise that the benefit is not indefinite, and that it will be necessary to continue with their compaction relief programme as long as their courses are extensively played'**

**Part 4**  
**In which**  
**Mr Lidwell sings the**  
**praises of 'a visit**  
**from the agronomist'**

**F**or a reason that I find difficult to understand, some chairmen of green and greenkeepers dislike the idea of a specialist coming to their course. They seem to think that if anyone has to give them advice, they have failed.

Actually nothing is further from the truth. The world outside of Golf Clubs operates on that very basis. The larger the company the greater the number of specialists employed. They take the sensible view that no one person can keep up with all the latest developments and that if they are to maintain their own standing in the business environment they must employ specialists to keep them advised.

Briefly, the STRI was established in 1929 under the title of 'The Board of Greenkeeping Research' to provide a service to Golf Clubs. It was re-constituted in 1951 as the 'Sports Turf Research Institute' and its work expanded to cover all sports played on a grass surface. Most of the major sport-controlled bodies of the British Isles are members through nominated representatives. Its affairs are administered by a board of management which includes representatives from the Royal and Ancient Golf Club and the Golf Unions, together with those from Association Football; Rugby; Lawn Tennis; Bowling; Cricket; Hockey; The British Association of Golf Course Architects and of course your own Association, BIGGA.

Many Golf Clubs like my own have joined the Institute and receive an annual visit from one of their agronomists. His visit takes the form of a walk-about. We select a route which takes in locations on our course that have received his previously recommended treatment and also includes areas where we feel in need of advice. We are always pleasantly surprised at his detailed knowledge of our course, it being obvious that he does us the honour of preparing well for his visit.

After our course walk-about, we retire to the board room for a cup of tea and a chat. This is a most valuable part of the visit, affording the opportunity to both check our notes and confirm recommendations which can be put in hand prior to publication of the report.

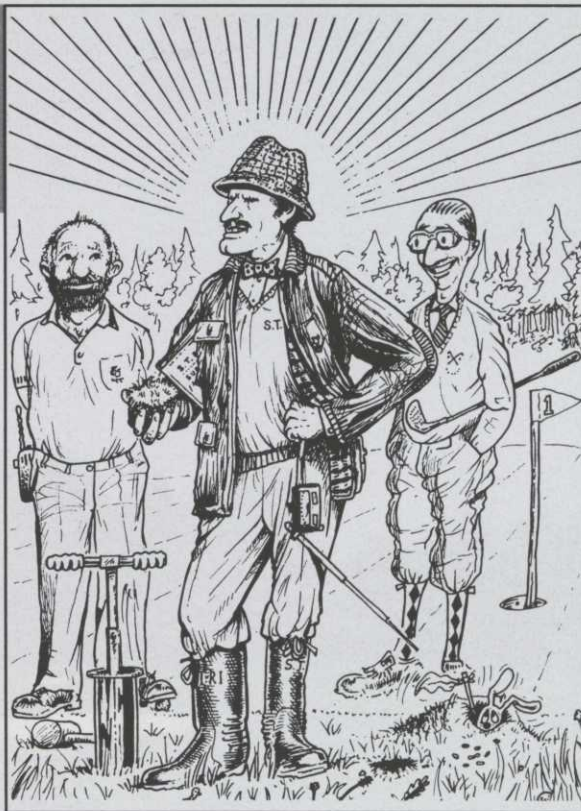
Shortly after the visit we receive his report which usually includes these sections:

- Introductory remarks: A brief survey of the general condition of the course.
- Course Survey; A detailed survey of those parts of the course on which the agronomist wishes to make comment, together with those where he was asked for advice.
- Recommendations: Discussed recommendations for course maintenance together with detailed treatments, quantities and rates of application.
- Other points: Comments, suggestions and recommendations as a result of the visit. Our own reports have included details on the building of a bunker with a revetted face, arboreal work, the extension of a green and the emotive problem of trolly use in winter.

As a definite policy, my committee arrange for a copy of the report to be displayed for all to see in the clubhouse. Naturally, the greenkeeper also receives a copy which he displays on the notice board in the mess room. When the report arrives I have an immediate responsibility to evaluate the cost of the recommendations, together with the effect such changes may make on the regular maintenance programme.

To obtain an overall view of the recommendations I prepare a large sheet of paper with the operations along the top and the work locations - Green; Temporary Green; Collars; Aprons; Tees; Fairways and Rough - down the left hand side. By working through the report and noting the details in the appropriate section I can be sure of making a full evaluation.

This type of analysis allows me to see at a glance the requirements at each location. The greenkeeper also has a copy for his notice board and uses it as a reference. It removes the need for him or his staff to spend their valuable time sorting through



**THE**  
**OTHER**  
**SIDE**  
**OF THE**  
**GREEN**

paragraphs of the report.

While I am obviously advocating the use of the STRI and a visit by an agronomist I have made no mention of their research facilities, which are concerned not only with sports turf but with all amenity grass areas and artificial turf surfaces. Some of their research is funded by outside bodies, but we all benefit when results are published. Their activities also extend from feasibility studies on potential golf course sites to the ecological and conservationist issues of established courses. We should all make use of their good offices.

**STOP PRESS!**

**AERATION & DRAINAGE SERVICES**

now offers the ultimate in aeration

**TORO HYDROJECT 3000**

Call now for hire rates.  
 We also have large and small  
 verti-drains, turf conditioners,  
 trenchers, etc.

Contact: Paul or Lesley Wright  
 Aeration & Drainage Services

20 Westminster Close,  
 Eastbourne, Sussex BN22 0LQ  
 Tel: Eastbourne (0323) 506725  
 Mobile: (0860) 838241  
 Fax: (0323) 411980



AD  
 REF  
 43



**How the PGA provides a**

# STRENGTH



# Tour of

# THE

## UNDER SCRUTINY: CHAMPIONSHIP COURSES



### Number 2: PGA EUROPEAN TOUR

Bruce Jamieson, pictured, is a man who gets results. As Director of Agronomy for the PGA European Tour, that's one of many required skills. DAVID WHITE reports



**T**he final shot on the first play-off hole at Wentworth, a stiff-to-the-flag five iron from Seve... he's home and dry, a worthy winner of the PGA Championship. Such is the stuff of which dreams are made and which makes golf such a perfect spectacle. But how are such courses prepared for a major championship?

To get the facts was not difficult, for the PGA European Tour boast as their Director of Agronomy Bruce Jamieson, a talented young Scot with a dead cert family background – his father and brother are both professionals – who has achieved his goal by working through the ranks as greenkeeper, head greenkeeper (at Powfoot and Royal Porthcawl) and who has never once dismissed the need to follow the learning curve. Learning was the very key to his present role and followed a familiar Scottish pattern of Elmwood College for City & Guilds in Greenkeeping, a positive and substantial portfolio of turf management and self-improvement courses at other colleges and finally graduation into 'fully trained management' – his ultimate aim – via examination and graduate membership of the Institute of Industrial Management. He is proof positive that greenkeeper education works!

At Porthcawl, where he masterminded the course for at least two National Championships, his skills were instantly recognised. In their wisdom the Club saw that he was outstripping his earning potential and planned for him to be released, as a designed campaign, to give advice to other Clubs in the area. In the event a different challenge presented itself and he joined the PGA European Tour as a Tour Administrator. Suddenly things were not the same. Opportunities abound for a man of knowledge and in offering advice to the green staff at a Tour venue in Italy and subsequently at other European venues, his skills of communication were observed and monitored to an extent that within a short space of time he was appointed to his present role by PGA European Tour Executive Director, Ken Schofield.

How did it happen? It seems simple enough, for he has a gentleness and calm that inspires confidence. He talks with people, not at them. He listens; he has sympathy; he understands. He's been there. Above all he doesn't tell people what to do, he merely suggests better or different ways of achieving a goal – the goal that both parties want. And he gets results.

I was interested to learn how he ensured reaching what is all-important to tournament players: that the quality of the course and the condition in which it is presented to them is as good as it possibly can be. How, for example, does the whole thing start?

A tour venue, once mooted, gets to first base only after several imponderables have been thoroughly examined and the site found to meet specific criteria. Location is, naturally enough, ➤



**Methyl Bromide gassing**

● Previous page:  
**Attention to detail at Austria's Gut Altentann**

→ one such criteria and access for traffic and spectator accommodation another. The course must have playability and this will be ascertained only after several rounds have been played by senior Tour officials.

Achieving playing conditions that challenge the world's best golfers may necessitate minor alterations and within reason some changes may need to be made to, say, the levelling of a tee or its enlargement. It is the Tour's role to give such advice, to work alongside golf course personnel, to help them achieve the standards of preparation that are required for tournament play. A venue is visited six months prior to an event and informed discussions will take place with the head greenkeeper about his planning for the event and the logical approach seen to be necessary leading up to the tournament. The head greenkeeper is free to talk to Bruce at any time if he has a query,

or seeks confirmation of a planned course of action. Bruce has a lengthy check list which outlines a programme to be attained, but the impression I gained was always of joint consultation, advice, suggestion. Never insistence.

If, for example the Club is short on greenkeeping staff, and if the head greenkeeper is happy to accept help, the Tour can supply the Club with three qualified greenkeepers – Roger and Richard Stillwell and Mark Lewis – and they arrive a week prior to the event and stay on until the event is over. Roger Stillwell, who like Richard is an independent consultant greenkeeper, is seen as something of a 'fire-fighter' – a problem shooter if you like. He's around if needed and often attends three or four months in advance. Now they've added to the team, with BIGGA TORO Student Greenkeeper of The Year finalists attending during a tournament. This year two finalists attended St Mellion for two weeks and proved invaluable to the team, whilst gaining additional skills.

I touched on the grass species conundrum and asked about Poa annua. It was a subject that Bruce instantly warmed to and one on which he holds firm views. He believes that the Poa problem can be solved quite easily.

**'We have this dogma in Britain about**

# Get rid of

'We've had a situation over the past 20 years where consultants like Jim Arthur and the STRI have given good solid advice for maintaining bents and fescues and achieving them back into the sward' he said. 'But it's a very slow process and I believe golfers today are too impatient and don't want to wait years for good surfaces. Anyone thinking they can revert 100% Poa to bent and fescue in under ten years by slow management methods is dreaming. They'll maybe knock it back to 30% in the first two years, but getting rid of that 30% is going to take another ten years. Then you have the problem of seed that's been laid down in the thatch layer still germinating maybe two years after. Therefore you can have an invasion of the sward any time opportunity presents itself to the Poa remaining.

'You've also got several different types of Poa in greens, not just one. There's a stoloniferous variety and one that grows by rhizomes as well, so all the slitting that we do to greens, although it encourages the bent grass to shoot stolons and rhizomes, actually encourages the Poa as well. It's easy to say you will get rid of Poa annua – meaning the seeded head producing variety – yes, you certainly will, but whether you get rid of the variety spreading by stolons, that's another matter, and I don't believe you will.

'At El Salar they have a Poa problem and every three years they take four greens, cover them with polythene after aerifying with a hollow tiner, and gas them with Methyl Bromide. It kills the greens stone dead to a depth of four inches. They clean up the thatch, leave it for two weeks, score new seed into the soil – in their case pure Pennncross, which germinates in six days – and in six weeks they have a fine putting surface which lasts for three to five years, or even longer, depending on how they're managed. I believe that's a route we should consider in Britain. If you've got a Poa green and want to get rid of it, gas it! Get it cleaned out, sterilise the soil, re-seed it with what you want and manage it accordingly. I believe you can then retain it, but

# MAXEL golf

## "THE COMPLETE SERVICE IN GOLF COURSE CONSTRUCTION"

### CONSULT US WITHOUT OBLIGATION

**Maxel Construction and Management Services Ltd.  
Manor Cottage, 1 Front Street, Whickham,  
Newcastle upon Tyne, NE16 4HF.  
Tel: (091) 496 0312. Fax: (091) 496 0084**



AD  
REF  
263





# WEED FREE GREENS!

IMPOSSIBLE? NOT AT FRAY-LANGUARD LTD - THE METHYL BROMIDE FUMIGATION SPECIALISTS.

"PUTT" IT TO THE EXPERTS

## Fray-LanGuard Ltd

13 Church Lane, Husbands Bosworth, Lutterworth, Leicestershire LE17 6LS. Tel: 0858 880898. Fax: 0858 880720

→ destroys the ability of a good golfer to score'.

He talked of The Masters and how each green has a single greenkeeper, each responsible for a consistent speed, some may need one cut, others four or five, but each will be the same as the other. Greenkeepers in Britain and on the continent, however, are under resourced and have perhaps two or three triples for a whole course. No problem, in Bruce's view, providing each mower is set on the accubar gauge to the same tolerance. A good triple cut, cut at a 45 degree angle on the second cut can present the greens very nicely. The stimpmeter is also a useful tool, he says, giving the greenkeeper information that he should want to have.

Many Clubs do not get paid to stage a Tour event, yet there are more and more who are actively seeking to be on the rota. What do they get from it? Members can expect to gain from their hard work and sacrifice. Benefits are tangible and intangible. The clubhouse may receive a face-lift, the golf course will certainly benefit from the maintenance programme, from the picture it presents to the world, and the spirit that pervades throughout ensures that pride is increased. One positive bonus is the knowledge gleaned on how to manage a course through a stressful period, the increase in traffic and wear and tear. Greenkeepers are often pleasantly surprised at how much the course can take when preparation is programmed and the experience of managing turf 'at peak performance' for a week becomes a priceless bonus when preparing for future Club championships. The kudos to a greenkeeper in seeing a job well done is beyond measure. Taking a direct comparison between Wentworth, a world-renowned course designed by Harry Colt, and Coombe Hill, another Colt design and in many ways very similar in quality and playability, but little known outside of London, the Wentworth course has hosted tournaments for the past 30 years and is the one everyone wants to play. That international recognition continues to the benefit of members long into the future.



A Cornish jewel: the 5th at St. Mellion, a PGA Tour venue

AD REF 325

**MORTGAGE FUNDS AVAILABLE TO BIGGA MEMBERS AT 10.75% FIXED**

## THE BIGGA PERSONAL PENSION PLAN

BIGGA is pleased to announce that with immediate effect, the minimum premium for the BIGGA Personal Pension Plan is reduced to only £15 per month for all greenkeepers. So now you can take full advantage of the tremendous benefits that the plan offers for a lower monthly outlay.

## THE BIGGA MORTGAGE SERVICE

BIGGA is pleased to announce a new service for all members, which will make it easier for greenkeepers to secure the best mortgage offer when they are either buying a new house or refinancing the purchase of their existing property. The Association is well aware of the exceptional demands placed upon its members because of the nature of their work. Greenkeepers do not always have the time to explore all the mortgage possibilities available.

NOW is the time to find out more. Please complete the form below and post to:  
**Executive Director, BIGGA, Aldwark Manor, Aldwark, Alne, York YO6 2NF**

- |   |                                   |
|---|-----------------------------------|
| 1. I will soon be/am in the process of buying a house. Please send me details of the new BIGGA Mortgage Service         | Tick box <input type="checkbox"/> |
| 2. I already pay for a mortgage on my house, but I wish to know if any better mortgage arrangements are available to me | <input type="checkbox"/>          |
| 3. I am/am not in a Golf Club Pension Scheme. Please send me details of the new 1991 BIGGA Pension Plan                 | <input type="checkbox"/>          |

Name.....Date of Birth.....

Golf Club and Job Title.....

Home Address.....

.....Post Code.....

Tel No. (Work)..... (Home).....

Howard Evans Financial Services is an appointed representative of Standard Life and is a special financial advisor to BIGGA. Pensions, Investments, Savings, Life Assurance, Mortgages, Commercial Loans, Tax Planning, Health Care and Financial Management

GI 7.91

Lautro



## B.E.M. for former BIGGA Chairman

It is with great pleasure that the Association learnt of the award of the British Empire Medal to Walter Woods in the recent Queen's Birthday Honours list.

The Award was made to recognise his services both as Links Supervisor at St Andrews and to the greenkeeping profession. Walter, pictured, played a leading part in the establishment of BIGGA in 1987 and indeed was the first Chairman of the Association. His has been a key role in the development and progress of the Association and rarely a week goes by without Walter contacting the office with a new idea or some relevant suggestion. Those who know him will vouch for his forthright views, warmth of personality and at all times his determination to enhance the greenkeeping profession and the well-being of greenkeepers.

I am sure that the Association will continue to enjoy his practical support and be able to call on his technical expertise for many years to come. Many congratulations Walter on this very much deserved recognition for all you have achieved for the greenkeeping profession.

NEIL THOMAS, Executive Director



# Bookings are up for '92 Exhibition

**HEAD OFFICE**  
NOTICES

It is interesting and very encouraging to note that despite the current depressed economic climate, confirmed bookings for our 1992 exhibition in all three halls are well ahead of expectations, which only seems to confirm the growing popularity of BIGGA's January show.

A limited number of excellent sites are still available, but won't be for long! In fact, at the recent Landscape Industries show a new 1992 exhibitor was overheard expressing anxiety as to the outcome of the deadline for 1991 exhibitors to confirm space, as he was awaiting confirmation of his own application and space allocation.

New and potential exhibitors in the UK, Europe and the USA, will be receiving details very shortly and will no doubt accelerate the take-up of remaining stands.

The 'no cost to user' facility provided by the hotel booking agency INNTEL will again be available, thus making it easy for exhibitors, delegates and visitors alike to arrange their hotel accommodation for their stay in Harrogate. To avoid any rush you can call now, asking for Annie Moncrieff on 0206-211106. Remember that the BIGGA headquarters hotel is The Old Swan and accommodation can also be booked there through INNTEL.

January 1992 may seem a long way off, but it is wise to make sure of your exhibition space and accommodation soon. Details of the seminar programme, which is always of great interest to our members, will be announced shortly. For any further information, please call Debbie Savage on 03473-581/2.



## BIGGA National Golf Tournament

Royal St David's, Harlech, 5th, 6th, 7th August

The final date for entry is Friday 19th July. If you haven't already done so, mail your completed entry form to BIGGA Headquarters - now!



**BTME**  
BIGGA Turf Management Exhibition and Seminar Programme 1992

22 - 24 January 1992,  
Harrogate Exhibition Centre



Make a date  
in YOUR diary for the  
industry's premier event

Have you booked your stand space?

Space is limited... and it's going fast.

Book now - ring Debbie Savage on 03473 581/2

## THE WORD IS OUT!



### TRIMS DOES IT ALL!

Greenkeepers around the world are using **TRIMS Ground Management Software**.

**TRIMS** is the one and only software system designed with the help of greenkeepers to meet the challenge of today's record keeping requirements.

**TRIMS** Record Keeping Features include:

- Budgets & Expenses
- Equipment Maintenance
- Spare Parts Inventory
- Purchase Orders
- Material Safety Data Sheets
- Fuel Inventory (UST's)
- Personnel Records
- Labour activity
- Work Orders
- Irrigation
- Chemical Usage
- Fertiliser Application

Call or write today for your **FREE** Demo Disk (state size: 3 1/2" or 5 1/4") and see what **TRIMS** can do for you!

Contact BIGGA HQ, Aldwark Manor, Aldwark, Aline, York YO6 2NF  
Tel: 03473 581/2 • Fax: 03473 8864

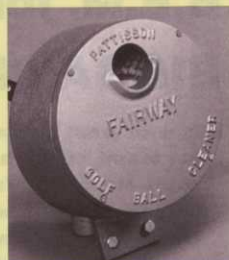
# TRADE TOPICS

■ High winds can make a pipe smoker thoroughly niggardly on a golf course when the matches won't stay lit. Thus at The Belfry I was impressed with the super Western Log Company shelters, which offer a comforting break from any wind and rain. With 12 of 'em dotted strategically around, this smoker was able to indulge his filthy habit with nary a problem. The golf was good too! Western Log are on 0639 896715.



■ A new bunker/green rake – called the Ulti-Mate – has been given the thumbs-up at the Belfry and looks set to make its mark elsewhere. All-plastic, it features a grip guard to keep the handle free of sand and a blade which the makers suggest can be used to clear a path to the hole when early morning golfers are faced with dew. Forgive me for mentioning it, gentlemen, but is that not a contravention of rule 23? For details, call 0792 296624.

■ Taken to task for my comments in May on 'those dreadful tin box and sliding brush affairs' in describing ball washers and how neglect of little items around the course can cause irritation, I am reliably informed by Patissons that quite apart from losing favour, these are more popular than any other ball cleaner sold in Britain. However, plastic has taken over from tin and metal fittings are now galvanised. Whilst never intending to 'knock' a particular model, my comments on clapped-out equipment and tardy replacement remain firm. Suitably chastised, I still admit to a personal preference for Patissons 'FAIRWAY' rotary cleaner, which is a gem. Details, telephone 0582 505241.



■ Toro's innovative Hydroject 3000, featured in June, has its first UK buyer, D & E Turf Maintenance of Shildon, Co. Durham. First announced at BIGGA's January exhibition, we understand that enquiries received were quite staggering. Original sales forecasts have been rapidly ditched and are now expected to be at least 100% in excess of target.

■ Booker Seeds Ltd, acquired recently by the Dutch Royal Vanderhave Group BV, has changed its name to Sharpes International Seeds Ltd. For day to day trading the company will immediately adopt the more streamlined title of Sharpes International. To coincide with the launch of the new name, Sharpes International has also published a comprehensive brochure which provides a detailed insight into their breeding/trialing programmes, quality control facilities and extensive varietal portfolio. Copies from Boston Road, Sleaford, Lincs, telephone 0529 304511.

■ Supaturf have produced a colourful new eight-page brochure detailing their range of Top Line pressure spray line marking machines that are streets ahead of the hand-held aerosol. Well worth investigating, copies are free by 'phoning 0533 750256.

# TORO Quite Simply Machines That Guarantee

There's just nothing to beat the dependability and high performance of the **TORO REELMASTER 450-D**

This exceptional machine has been designed with its weight evenly distributed around a centre mounted 50 hp engine. Climbing ability and traction is so easy ... in virtually all weather or ground conditions. All controls are in easy reach of the operator to provide greater comfort. And with transport speed of 15 mph and mowing capacity up to 7.5 mph productivity will be increased considerably. O-ring seals protect connections. Low PSI ... it all adds up to the 450-D.



You can aerate 61,000 square feet an hour at speeds up to 2.2 mph with exceptional hole quality. That's about four times as fast as other reciprocating models.

A wide swath pattern and fast speed put the Toro Fairway Aerator way out in front.

## TORO Fairway AERATOR



Clears  
consists  
hole quality p  
adjustable coring dep  
control. Up to 5" with  
two-tine head and up  
3" with  
six-tine he

■ To help maintain putting green quality at four of the 14 Whitbread courses, a delivery of 11 Lloyds Paladins has been made. Explaining the choice, Derek Keen, Area Course Manager for Tudor Park, Meon Valley, Breadsall Priory and Goodwood Park, said: 'We have trodden the triplex road for speed and cost-effectiveness but found they can mark the greens when used regularly... with pedestrian operated machines, we found they produced a better finish. Another factor is our greenkeepers. They get terrific job satisfaction from caring for the greens and it is very rewarding to use a machine that gives that final touch of perfection.' The 53cm width Paladin is powered by a Honda GX110 3.5hp engine and gives 138 cuts per metre.



Derek Keen takes delivery from Derek Haley of Lloyds

■ On December 31st the JLO factory in Germany ceased production of their two-stroke engines. Some JLO engines will continue to be made at Technamotor's Italian facility to the original design and full spares and service support is assured for both past and future production. In the UK and Eire, IPU of Wolverhampton will continue to provide service until September, when Technamotor (UK) Ltd will assume responsibility for all JLO related matters. Their number is 0784 450785.

■ Colin Pryce, who has been operating a Terralift soil aeration service for the past four years, has formed a new company, C & P Soilcare Ltd. The new company will provide a complete soil care service and includes compressed air soil aeration, soil analysis and supply of conditioners which can be injected by Terralift or incorporated by convention means. They have the knowledge to sort out seemingly unsolvable soil problems, or know a man who can!

Pictured: The Terralift pneumatic Soil Conditioning Unit.



■ Ransomes have been chosen to supply a range of equipment to the Earls Colne Golf and Country Club, Colchester, built on the site of a World War II airfield, part of which is still used for flying. The full 18 hole course, together with 4 hole training academy and 20 bay floodlit range covers 300 acres and features 14 lakes and 25,000 trees. Praising Ransomes for their wide range, owner Mr Eric Hobbs said: 'I am a firm believer in buying British and Ransomes equipment really impresses me, it fits my bill perfectly.'

■ Agar Equipment Ltd have announced a new front mounted mower specially designed for use with Ford's CM224 Front Mowing Tractor. Featuring a fully floating head, fully castorised wheels, solid rubber tyres, high clearance and blade access by tipping the deck over, the new FM constitutes an exceptionally efficient grass cutting machine, especially where grass is difficult and uneven. Agar Equipment Ltd are on 0905 52717.

# The Best. Top Quality Guarantee Cost Effective Operation

There's no doubting the value and quality of TORO TURF MANAGEMENT EQUIPMENT.

Have a word with your local TORO dealer who will be only too pleased to arrange a demonstration depending only upon availability of machine ... they sell very quickly ... of course!

And with both contract and leasing terms available can you afford not to find out more about TORO.

TORO distributed by LELY (UK) Ltd  
Station Road · St Neots · Huntingdon · Cambs PE19 1QH.  
Tel: (0480) 76971 Fax: (0480) 216167 Telex: 32523

**TORO.**

*in a class  
of their own*

## Cuts Costs ... Cuts Time ... Cuts Maintenance

When you have acres of parkland or miles of grass verge, it goes without saying that you need a machine that will do a good efficient cost effective job. There is only one answer. From the world leaders.

## TORO REELMASTER 335-D

Good transport speed 0-15 mph. Heavy duty 1.9 litre 35 hp engine. Very manoeuvrable.

18" uncut circle ... with an 84" width of cut.  
High 7" clearance.  
Optional 2 or 4 wheel drive. 6 ply high flotation turf tread tyres.  
It's a dream to control, plus the advantage of an adjustable steering column.



Please send me full details of

TORO REELMASTER 450-D  TORO AERATOR

TORO REELMASTER 335-D  (tick box required)

Name \_\_\_\_\_ GI.7.91

Company \_\_\_\_\_

Address \_\_\_\_\_

Post code \_\_\_\_\_ Telephone \_\_\_\_\_

# The good, the bad

This feature was to have focussed on Britain's Local Authorities and their golfing activities. The many hours spent by your editor on asking questions – and receiving totally negative answers or being stonewalled – turned out to be the most unrewarding experience of all time. What have they to hide? Why are they so negative? Whose corner are they protecting? One highly capable head greenkeeper in charge of a local authority course in Kent summed it up rather succinctly by declaring that in his case the reason was one of ignorance: "None of the faceless ones from my authority know 'beans' about golf", he said, "and they frankly couldn't care less."

## Local Authority Golf – getting it wrong X



## Local Authority Golf – getting it right ✓

### GOLF AT THAMESDOWN – a dutiful local authority and its golf programme

Thamesdown – the borough centred around Swindon – is extremely conscious of its duties to its citizens and over the years has invested in many amenity facilities. Their golf includes an 18 hole and two 9 hole courses, three pitch & putt courses and a 34 bay driving range. The majority of these are centred around the Broome Manor Golf Complex, where Kelvin Dudley is the head greenkeeper with a staff of six. Also under the same management in the adjoining Coate Water Country Park are extensive pitch & putt, mini golf and putting green facilities. The complex, under the management of Tom Watt, has a pro shop and a restaurant and bar, these being available for private functions.

The driving range, which re-opened recently with an additional 14 bays, has been given a sand-filled synthetic surface to allow the majority of balls to roll towards the centre for mechanical retrieval. It was the need to mechanise the facility (six million balls a year) which led to the refurbishment. Kelvin said that in wet weather balls 'plugged' and had to be picked and washed by hand.

The new carpet was made specifically for Thamesdown and extends over six acres. In re-contouring the site a considerable tonnage of clay subsoil was removed and replaced with a stone sub-base over which 500 tonnes of sand was placed. New lighting was installed and the range is now open from 8am until 9pm, seven days a week.

In common with most local authorities, the advent of competitive tendering has placed restrictions on availability of facts or figures which could be used by a competitive tender. Tom said this was regrettable, as they (Thamesdown BC) liked to be helpful, but CCT was a fact of local authority life and you never knew if the next complex manager might not be from a Dutch or French firm. Thamesdown have tendered for their own contract, and while expecting to win they are nervously awaiting an answer on their future.

Tom claimed not to be political, and within the popular meaning he certainly is not, however he is proud and possessive of Thamesdown's attainments and their 'value for money' services. In particular he is sincere in his belief of the

# WESSEX

## Sweeper Collectors

Collect leaves, grass clippings and litter from turf or hard surfaces.



The Wessex Sweeper is PTO Driven, has a big hopper which can be tipped from the tractor seat, and is designed to sweep clean even on undulating ground.

4ft & 6ft versions for tractors from 15hp



Optional gully brush attachment

WESSEX FARM MACHINERY SALES CO.  
Trading Estate, Oakhanger Road,  
Bordon, Hampshire, GU35 9HH.  
Telephone 0420 478111

AD REF 210

# and the faceless

rightness of providing rate-payers with golf a reasonable prices, green fees being a maximum £6.85 at weekends, with concessions for the unemployed mid-week. Even at these modest levels Thamesdown's golf makes a substantial contribution to the borough's income. Perhaps as a result, councillors are positive about the facility and willing to re-invest.

Thamesdown has invested £800,000 in golf in the last two years, the major projects being at Highworth and the extensions and improvements at Broome Manor. They also plan a further £250,000 for a substantial expansion of the Clubhouse. The authority's interest in golf stems from 1976 when the original 18 holes were laid out, the range coming in '82 and the additional 9 holes a year later.

Neither men claim that these courses are the country's best and are well aware of the problems, many of which stem from past work carried out while working to a budget, resulting in obvious deficiencies. Kelvin is acutely aware that the courses are over-used, adding that compaction required a lot more work to be carried out.

Soil at Broome Manor is predominantly clay, allowing the formation of several ponds and streams, and adding significantly to interest. While there is only limited under-drainage there have been few problems in recent dry years, though one specific area of more sandy soil is heir to compaction as it slumps in the wet. However, the complex has its own Verti-drain.

The golf side works autonomously within the parks department and they have their own machinery, which is relatively modern and well maintained by their own fitter.

Tractors are usually second-hand after Parks and Highways have finished with them, as they do no road mileage, nor is their duty onerous. Mainstays of the mower fleet are two trailed gangs for rough and fairways, changing duty being a matter of altering the height rollers. Rough is kept short to minimise searching for lost balls. For greens and tees they have a fleet of GreenKings and Tri-Kings at Broome Manor, whilst at Highworth, where the nine holer only opened this April, pedestrian mowers are used. Both sites have irrigation on all greens, but this is used fairly frugally, with water abstracted from the mains.

However, they are meeting popular demand with an annual 60,000 rounds at each of Broome Manor's two courses and an anticipated 40,000 at Highworth. Nor will Tom allow that the standard of play is sub-standard, for they have several county players and one junior national player (Gary Harris).

The atmosphere is one of relaxed, informal friendliness, though there are disciplines, with perhaps the biggest problem being slow play. A ranger is employed to keep matches moving, though no-one admits to being slow – they always have an excuse – was Tom's comment.

Tom's view on the expansion of golf courses was entirely consistent. He considers there should be more 'village' courses of nine holes, based (perhaps) in a redundant farm building and run by a village sports club. Such facilities, he suggests, could be set up for around £120,000 and would give the maximum amount of pleasure to the maximum amount of people.

Furthermore, obtaining planning permission would be easier.

**'They  
are meeting  
popular demand  
with an annual  
60,000 rounds'**

● The author, Hugh Tilley, is a journalist specialising in the field of golf course machinery and maintenance. He lives in Wiltshire.



## *Golf Course Ground and Irrigation Works. General Landscaping. It's all Bobcat Territory.*

Real mechanical manpower with exceptional workload versatility is what Bobcat compact construction equipment offers. Skid steer loaders, excavators and trenchers. Comprehensive range of easy to fit attachments provide economic working solutions to general landscaping works—excavating, grading, backhoeing, trenching, digging, post holing, tree transplanting, raking. And more.

**Bobcat. Technically and mechanically superior.**

**MELROE**  
EUROPE

Contact for further information: Bobcat — Melroe Europe,  
8-12 Coventry Road, Hinckley, Leicestershire LE10 0JT.

Tel: 0455-251725. Fax: 0455-637574. Tx: 34330.

Bobcat Parts and Services Support from a National Dealer Network.

As the acceptance of – and demand for – benefits provided by the automatic watering of extensive sports turf playing surfaces gathers momentum, it is evident that the sourcing and conservation of viable water supplies are fast becoming major issues.

This is especially relevant to golf where, in addition to the numbers of new courses being constructed every year, more and more existing Clubs, faced by increases in traffic, are investing in automatic watering systems to help greenkeepers overcome maintenance problems created by wear and tear – and equally important, present courses on a par to those seen during televised tournaments.

In the south, the vast growth of residential development plus a big increase in the building of industrial estates requiring water has compounded the situation. These factors and the undoubted change in climatic conditions which we are experiencing is now reaching a point of real concern.

But all is not lost! The key to future sports turf irrigation and golf course watering in particular is the provision of large scale water storage facilities in the form of a reservoir or ornamental lake.

Utilising impounded water – out of season water supplies boosted by natural, winter rainfall – the storage facility, if designed to match the needs of an automatic watering system, could provide sufficient water to last through the bulk of most long, dry summers.

Examples of this far-sighted approach are already beginning to take shape. In Devon, the design for a new 27 hole golf course at Dartmouth, currently under construction, includes a lake capable of storing 1.5 million gallons of water.

Fed from boreholes for which an abstraction licence has been obtained, water will be pumped into the lake to service their automatic watering system, which, unusually, consists of 216 full circle pop-up sprinklers covering all 27 greens and tees.

Despite the fact that full circle sprinklers use 50% more water than the more conventional part-circle heads, the capacity of the lake is such that in the unlikely event of the boreholes drying up, the automatic watering system would be able to continue to operate daily for up to six weeks before supplies were exhausted.

In real terms, the lake, full of 'winter water' for use in say late March or early April onwards, would only require topping-up through the summer. If the watering programme was carried out over six months, the use of 'peak season water' could be reduced by up to 50% – a substantial saving.

In contrast, the specification for the nine-hole pay and play Thorney Farm golf course, being developed close to Heathrow Airport, includes the construction of a five million gallon lake.

From what Richard Skehan, director of the company developing what was



Lakes at The Belfry feature wind powered circulation/aeration Lake Aid Systems

# Wise up to winter water

a waste disposal dump, tells me, fairway watering has been specified in addition to planning for pop-ups around greens and tees. In this instance, the lake – initially filled with 'winter water' – will be capable of supplying enough water to service the system without replenishment for up to three and a half months!

On the Solent coast, the Barton-on-Sea Golf Club – founded in 1898 – have embarked upon an imaginative, phased re-development of their existing 18 hole course which, when completed, will consist of 27 holes plus an ornamental lake featuring an island green.

As might be expected, the lake is not being created just to make the course look attractive – it will also serve as a reservoir for a pop-up system for greens, tees and approaches. The lake, capable of holding 1.25 million gallons, will be fed by two natural springs and possibly a stream containing treated water which runs from the nearby sewage treatment plant. Top-up supplies – mains water – will be piped into a break-tank and held, prior to being pumped into the lake.

Tony Gadd, course manager at Barton says that the treated water supply will most probably be used as an emergency source although tests may well prove its viability for everyday use on the course.

So how much is it going to cost members who, having an existing automatic system, appreciate the importance of the need to become relatively self-sufficient in terms of water supplies?

Surprisingly little. The provision of a reservoir – such as a large pond or lake – should, I'm told, be no more than £10-£15,000, depending on location, soil structure and ease of construction. When I asked about disposal of the resultant spoil, he replied to the effect that this could be used to build a feature somewhere else on the course – or as he succinctly put it; "sell it!"

Talking of costs, the provision of a reservoir can also reduce the price of water being piped onto the course. 'Winter water' is a far cheaper buy in volume than peak season water – if it is available both in time and quantity.

Safeguarding water supplies is one thing, managing its usage is just as important. In this context it is obviously of equal importance to realise that the automatic watering system can play a key role in water conservation.

It will do so, providing it is properly designed, correctly installed, operated thoughtfully and serviced regularly.

The greenkeeping team can contribute much to achieve consistency of operation by learning as much as they can about the system. Sensibly, one member of the green staff should be given the responsibility of keeping a daily eye on the equipment and carrying out relatively minor adjustments or repairs. This will entail some training – often provided by the irrigation contractor who installed the system.

As knowledge and experience is gained, these skills can be put to good use: saving time, (awaiting an outside engineer to arrive and solve what is often a simple fault) frayed tempers and the possible loss of thousands of gallons of precious water should a sprinkler malfunction or pipe joint fail.

Talking of maintenance, Clubs should also consider the importance of budgeting for at least one major inspection and service each year. This is best achieved by arranging a contract with the company responsible for installing the system originally, or where contact has been lost, by asking the British Turf and Landscape Irrigation Association to provide the name of a suitable alternative.

**Footnote: Clubs should be aware that a licence to abstract water – be it from the mains, a river flowing through the course, a natural spring or by sinking boreholes is a mandatory requirement. Club secretaries should consult their nearest National River Authority office for details.**

● The author, Cedric Johns, is an ex-Fleet Street columnist, a PR and advertising consultant, and editor of the irrigation newsletter 'Pipelines.'

 **AGRIPOWER LTD**  
SPORTSTURF

SPORTSFIELD CONSTRUCTION  
IN  
GRASS OR SYNTHETICS

DRAINAGE - SANDBANDING

VERTIDRAIN HIRE

STONE PICKING

CULTIVATIONS

MACHINERY HIRE

Head Office: 02406 6776  
Midlands/North: 0543 250010



# Courses designed for everyone

EDUCATION

The day when your editor can sit through a day of lectures, aimed at members of that much maligned and supposedly misunderstood group 'The Golf Club Committee' – and come out smiling – has finally dawned. At such a seminar, given recently by the National Golf Clubs' Advisory Association, it gave me much pleasure not only to listen to three speakers, but to listen to those who listened. Each an expert in his own sphere: Keith Wright spoke on "The EGU/Club Partnership", our own David Golding on "The Need for Greenkeeper Training" and John Crowther on "The Responsibilities of a Golf Club Member when elected to a Committee".

Each in his own way proved highly entertaining and, of greater importance, each had a message to put across. That they succeeded in winning 100% approval from the audience would be almost too good to be true, but the overriding

message I received, in both eavesdropping and in discussion with green chairmen and secretaries, was of how those greenkeepers who had attended BIGGA management courses returned as changed men. Words hitherto taboo in committee-speak, like employee training; job progress; course excellence and college education, were no longer whispered. I even heard, and dare repeat it, 'greenkeeping management autonomy'!

I can read your mind, and anticipate your quizzical 'what's all this got to do with me?' The answer is simple. BIGGA's management training courses, a feast of which are scheduled for October and November at Aldwark Manor (see insert card for application), are planned specifically to take the heat off those who, perhaps like you, think education is not for them. BIGGA management courses are entertaining. Sure they're educational, but not at the expense of being boring

and never at the expense of technobabble, of talking over your head.

Still not quite convinced? Talk to anyone who has already attended, ask about the courses and what they gained from them, ask about the spirit of informal good fellowship that pervades throughout the whole period – the exchange of ideas and the sheer good fun of it all. If that doesn't convince, look hard at the sits. vac. columns and see how the better educated command higher pay!

The BIGGA management courses, I repeat, are meant just for you. Tell your Club secretary I said so and show him this column.

● **Book your place at one of the BIGGA management courses – see the card facing Page 2 for details.**



## Elmwood 'top college in Britain'

**Jack Humphries, Chairman of the Midlands Golf Union and President of The E.G.U. Executive Committee, which, amongst other things, is concerned with the training of greenkeepers, paid a visit to Elmwood College, saying: 'There is no doubt that Elmwood is the pinnacle of them all – it is the top college in Britain for training greenkeepers'.**

**A personal opinion, naturally enough, but doesn't that sound like fighting talk? I predict it will be viewed as red-rag-to-the-bull by other approved colleges, hell-bent, proud, and fiercely competitive in their education of future generations of greenkeepers.**

## Good jobs for first full-time students

The value of a full-time education course for potential greenkeepers has been amply demonstrated by news of four young men who attended the first such course ever held in Britain, all of whom have been appointed to good positions.

It was four years ago that a three year B Tech National Diploma in Turf Science and Sports Ground Management started at The Lancashire College of Agriculture and Horticulture, near Preston, under the direction of John Hacker.

Seven young men from around the country started the course, part of their first year being spent in college and 20 weeks – one term – at a variety of placements where they gained practical experience. The All-England Lawn Tennis Club at Wimbledon, Royal Mid-Surrey Golf Club, Cardiff Arms Park, Guernsey Golf Club and Grimsby Leisure Centre were among the organisations that took the budding greenkeepers.

The second year was spent solely at the college, whilst in the third most students went to golf courses for 32 weeks – in Florida.

Now comes news that Chris Harvey, one of the students on that path-finding course run by John Hacker (now running his own consultancy), has been appointed course manager at Isle of Purbeck GC in Dorset, where he is in charge of the 27 hole complex. Chris, who had previously worked as groundsman for Portsmouth FC, incidentally married an American girl whilst in the US last year.

Another, John Huntington from York, has recently been first assistant at Farnham GC and on June 11th took over as deputy head greenkeeper of the Kings Course at Gleneagles.

Graham Wallace, a third group member, is deputy head greenkeeper on the Monarch Course at Gleneagles.

whilst Geoff Allison, from Peterlee, is an assistant on the new Wisley Course due to open in August.

It is good to learn that their hard work is paying off and equally gratifying that similar courses have been running successfully at The Lancashire College each year thereafter.

## GTC APPROVED COLLEGES

**SPARSHOLT COLLEGE HAMPSHIRE**

### GREENKEEPING & GOLF COURSE MANAGEMENT TRAINING

Sparsholt is unique in offering a wide range of full and part-time practical training, including

#### Full-time Courses

BTEC National Diploma in Golf Course and Sportsground Management (3 years)  
National Certificate in Greenkeeping and Sportsground Management (1 year)

#### Part-time Courses

A full range of day, evening or residential block courses.

For further details contact:

The Courses Adviser, Sparsholt College, Hampshire,  
Nr Winchester, Hants S021 2NF Tel: 0962 72441.  
Sparsholt is a Greenkeeper Training Committee Approved College

## Want to know about Greenkeeper Training?

Askham Bryan College can set your Career on the right course. We have been training Greenkeepers for many years and are a Centre approved by the Greenkeepers Training Committee.

Telephone Mrs Margaret Cairns on 0904 702121 and benefit from our experience.



...Ask Askham!

**ASKHAM BRYAN COLLEGE**  
ASKHAM BRYAN, YORK. Tel: (0904) 702121

Warwickshire College of Agriculture offer the following specialist courses in

### GREENKEEPING

Day-Release over four years leading to CITY AND GUILDS OF LONDON INSTITUTE GOLF GREENKEEPING qualifications.  
ADVANCED NATIONAL CERTIFICATE IN GREENKEEPING (One year, or over two winter periods)

For further information please contact:

The Registrar, Warwickshire College of Agriculture, Moreton Morrell, Warwick CV35 9BL. Tel: 0926 651367



■ Five Scottish colleges have formed a consortium to write units for a SCOTVEC Higher National Certificate course in Greenkeeping with Management.

This will be the first advanced greenkeeping course developed in the country and indicates the importance of carving a real career in such a vibrant industry through further education.

The five involved are Ayr and Dundee College of Technology, Elmwood in Fife, Langside in Glasgow and Oatridge near Edinburgh, with the consortium chaired by BIGGA's own Cecil George.

Pictured: Representatives from each college, together with Cecil George, at a recent development day.

# AROUND THE GREEN

## Keeping in touch with news and comment from the regions

### NORTHERN IRELAND

This was my first visit to Northern Ireland and my thanks to Peter Powell of Iseki for transporting and hosting me. It really is a beautiful part of the world. Portstewart GC, now with an additional nine holes of distinguished linksland added to the original fabulous 18, was the venue for the Iseki Northern Ireland regional qualifying event, under the expert management of Bernard Findlay. The wind was at gale force but golfers are hardy in these parts and without exception all those participating enjoyed the day and the excellent hospitality and catering. Results were: First class: 1st Patrick Devine, Carrickfergus GC; 2nd Sidney Arrowsmith, Royal Portrush GC; 3rd Godfrey Clarke, Dungannon GC. Second class: 1st Alec Lafferty, Royal Portrush GC; 2nd Ray McMaith, Royal Portrush GC; 3rd Tony Bradshaw, Malone GC. Third class: 1st Eric O'Neil, Portstewart GC; 2nd Paul McBain, Royal Belfast GC; 3rd Joe Millar, Knock GC. We look forward to welcoming them at Hillside on September 12th. This was a successful first event in this part of the world and I am sure the Northern Ireland round will go from strength to strength.



Northern Ireland Iseki category winners at Portstewart, from left, Neil Thomas, BIGGA, Alec Lafferty, Pat Devine, Eric O'Neil, Peter Powell, Iseki

NEIL THOMAS

### SOUTHERN IRELAND

The course at Forrest Little, for the Iseki regional qualifier under the expert management of Owen O'Connor (pictured), was in sparkling condition and an excellent day's golf ensued. The warmth of welcome at the club is something special - nothing is too much trouble and the catering throughout the day was excellent. BIGGA is now developing close relationships with greenkeeper members and non-members alike 'across the water' and in this connection the Iseki tournament makes a great contribution. My thanks to all concerned for a truly Irish welcome. Results were: First class: 1st Frank Donlon, Malahide GC; 2nd Paul Fitzgerald, Beech Park GC; 3rd Gerry Byrne, Westmanstown GC. Second class: 1st Edward Donlon, Rush GC; 2nd Frank Larkin, Castle GC; 3rd Owen O'Connor, Forrest Little GC. Third class: 1st Sean Murphy, Stackstown GC; 2nd Joe Walsh, Beavertown GC; 3rd Chris Nolan, Forrest Little GC. We shall look forward to meeting them all at Hillside on September 12th.



NEIL THOMAS

### NORTH WEST

The Spring Tournament at Saddleworth GC was attended and enjoyed by 40 greenkeepers on May 15th. The day started with weather best suited to winter underwear and ended with much needed but bitterly cold rain. Nigel Potter had done a grand job on the course even though the temperatures on Saddleworth are always considered to be at least 10 degrees lower than low lying areas. Despite the inclement weather some good scores were returned and as this was our Iseki qualifier it certainly brought out the best from competitors.

The results were: Best gross: P Pearce 77-2=75. Best nett: F Platt 80-10=70. Other nett scores - 2nd: J Pearson 90-18=72. 3rd : T Lyons 90-18=72. 4th: G Jarvis 82-10=72. 5th: S Hartshorn 88-15=73. 6th: A Peel 79-5=74. 7th: E Stewart 93-18=75. 8th: B Turner 93-18=75. 9th: D Berry 82-6=76. Vets Prize: B Cross.

Out thanks to Saddleworth GC for allowing us the courtesy of the course, Mr Marner and his staff for the first class catering; and our trade friends who as usual helped to swell the prize table. The next tournament will be the 'Roses Match' at Crossland Heath GC, Huddersfield, on Thursday August 22nd. I will require a team of 16 stalwarts to bring the trophy back to its rightful place, so please contact me if you are interested on 051 724 5412.

BERT CROSS

### SOUTH COAST

Details of the Section Summer Tournament are as follows:

Venue: Brockenhurst Manor GC. Date: Thursday 1st August 1991. Time: teeing off from 1.00 pm Closing date: 22nd July 1991.

34 GREENKEEPER INTERNATIONAL July 1991

The competition, consisting of a member and guest, will be the usual format of an 18 hole four-ball better ball.

Following a recent committee decision it was agreed to define a guest as either a member from our members own Club, or a greenkeeper from a different Club to their own.

Written entries, giving name and address, name of partner and current handicaps, together with the current fee, should be sent to: Joe Burdett, 948 Castle Lane East, Bournemouth BH7 6SP. Tel: 0202 483017.

I hear that Phil Nason has taken a greenkeeping job in Norway. Good luck Phil, perhaps I could book you for a winter lecture when you are under 3ft of snow next year! Maybe our editor would like an article on your greenkeeping experiences once you have settled down.

BOB DENNIS

### NORTH SCOTLAND

May 16th was the day for our Spring Outing at Nairn GC, the event turning out to be one of the best supported ever with over 70 members, traders and guests playing and another handful enjoying the general good fun. Our sincere thanks to everyone concerned at Nairn GC for hospitality and friendliness and for granting us the courtesy of the course. Although a light drizzle hung around for most of the day, it did little to dampen the spirits of golfers as they enjoyed playing a splendidly prepared championship course, ably presented by Ian Carson and his staff.

The successful players were: Scratch 1st Ian McLeod, Tain, 75. 2nd Kevin Peace, Peterhead, 76. Handicap 1-7: 1st Derek Roy, Nairn Dunbar, 79-7=72. 2nd Eoin Riddell, Royal Dornoch, 80-6=74 (BLH). Handicap 8-14: 1st Gordon Leslie, Duff House Royal, 82-11=71. 2nd Kenny Anderson, Newmacher, 86-14=72. Handicap 15-28: 1st Stuart Donald, Newmacher, 90-23=67. 2nd David Sinclair, Royal Aberdeen, 94-16=78.

Trevor Mackay of Royal Dornoch was best apprentice with a nett 71 off 8 whilst John Taylor of Forres won the Vets with a fine nett 78 off 5. Steven Frost of Royal Aberdeen succeeded again in the division for members without official handicaps by turning in a 92-26=66, duly being allotted a 20 handicap! John Robertson retained the Trade Shield whilst Ian Carson used local knowledge (and his hole cutter!) to win nearest-the-pin at the 4th.

Howard Evans addressed members prior to prizegiving with an informative talk on the benefits of a pension plan. The committee's thanks to Howard for making the long journey to help us. We hope he enjoyed this part of the world.

Members should note that our August outing at Peterhead has been brought forward one week to Thursday Sept. 5th, thus avoiding a clash with the Iseki finals. The lottery will also be drawn on that day. There is little truth in the rumour that Peterhead has snow in mid-September and I hope as many members as attended Nairn will make the journey.

At this time the section has 130 members, though it is disappointing to note that around 20 have not yet re-joined.

GORDON MOIR

### EAST MIDLANDS

May 16th saw the start of the East Midlands golfing programme with a bonny day of golf at Kibworth GC, a grand course delightfully prepared. As is often the case with these events the play was quite outstanding, the food delicious and the company just perfect. Thanks to all concerned. The best score was 74 from Paul Sewell, with the best nett being a staggering 61 from Craig Watt. Other scores were: (0-9) R Barker 75-4=71. P.Sewell 74-2=72. M Emery 88-8=80. (10-18) C Hare 81-14=67. S Fretter 86-18=68. S Goode 82-12=70. (19-28) C Watt 84-23=61. M Bindley 92-24=68. M Billings 93-22=71. Trade and Associates: I Toon 80-9=71. P.Fell 83-10=73. J Barsby 91-18=73. Well done all you winners and remember if you did not win something this time there is still the Autumn meeting at Rushcliffe GC on September 19th.

May I make my continuous appeal for news or gossip for this column, no matter how insignificant. Please call me on 0664 61642.

Paul Sewell

GORDON MITCHELL

### DEVON and CORNWALL

Third year unlucky was how the weatherman caught us at Westurf '91, though such inclement stuff doesn't stop the Devon and Cornwall members from attending in force and enjoying themselves! The whippers are reaching roaring pitch as the good word gets around about this excellent show and our thanks to all who make it thus, especially Gordon and Marion Child.

Our Iseki qualifiers tested their skills against the Tredegar Park course



(results later), with a special thanks to P J Flegg and Devon Garden Machinery for driving members to and from the venue – it was much appreciated.

May I make a plea to all who are tardy with subscription payments, reminding you that 34 people are still unpaid and seemingly do not consider the matter important. DO IT TODAY.

RICHARD WHYMAN

## SOUTH WEST



Bob Gates (pictured) is getting sick at having his leg pulled. It seems that being chairman of the section counts for nothing when mischief is in the air. Indeed, he told me only yesterday that if one more greenkeeper offers a tongue in cheek 'congratulations Bob, I've never seen your course looking so good' only for Bob to have to grudgingly admit that he retired last Christmas, then we may be one member short for some considerable time!

Seriously, the course at Westonbirt, considering the awful spring weather, was looking very tidy and playing well. Out thanks to the bursar of Westonbirt School for allowing us the use of the

course for our annual John Ireland Greensomes on May 2nd. This event, which combines greenkeepers playing with amateur partners, has proved very popular over the years since its inauguration in 1976. This year was no exception with prizes keenly contested from the start. The bright idea is to find the biggest bandit in your Club and make him an offer he can't refuse...

The nett results were: 1st R Greaves and T Reaves (Bristol and Clifton) 60. 2nd D Dobie and M Coburn (Marlborough) 61. 3rd T Roberts and C Middleton (Lilleybrook) 62. 4th P Baynton and J Scoones (Long Ashton) 65. 5th I McFarlane and J Cooper (Saltford) 65. Best front nine: D Eves and W Smith (Painswick) 37. Best back nine: C Tozer and D Rendell (Bridport) 34.

Thanks to Sta Brite Supplies and Monro's for prizes and to mine hosts Ken and Pauline at The Carpenters Arms for catering to inner needs.

It seems that some of you did not receive entry forms before the competition and if this should happen again; please feel free to telephone (0285 651908) and ask for one. One thing – don't leave it until the night before an event – give me a week's notice otherwise I cannot guarantee a place.

PAUL WORSTER

## SURREY

May I first apologise to you for the lack of Surrey section news in the last issue. I missed the copy deadline date. So far no one has contacted me regarding the two trips mentioned in previous issues of Greenkeeper International. What is the matter with you? Again I say – if you wish to visit Jacobsen's factory in July or Rolawn's turf farm in October you can still do so, but... you MUST contact me (025 125 4287) very soon or these events will have to be cancelled through lack of support.

You should have received entry forms for the Cresta Cup and The MacMillan Tankard and may I now request that you return them PROMPTLY. This enables food etc to be organised. May I further remind you that the rule still applies: once booked, if you then fail to play you will be required to pay for food ordered on your behalf.

The regional seminar is in Surrey this year, at Merrist Wood College on November 6th, and numbers are limited. If you are interested in reserving places please contact a committee member.

I'm off to Canada on holiday – tough life isn't it? I hope it rains steadily for the next two weeks, purely for the sake of your golf course – naturally!

PHIL BALDOCK

## KENT

Our Spring Tournament and Iseki qualifying round was played on May 14th at Sittingbourne GC, our qualifying representatives at Ham Manor will be: 0-1 category Ian Rawlings, Alan Sheppard, George Brown and Steven Suttle, with David Goodhew in reserve. 10-18 category: Jason Bean, Peter Briscoe, Michael Love and John Millen, with Malcolm Arthur in reserve. 19-28 category Phil Hurst, John Roots, Steve Philips and Nigel Stapley, with John Waterman in reserve. Well done, and the best of luck for the next round.

In the morning medal there was a tie on 73 nett, with a count-back revealing Phil Hurst as winner with Peter Briscoe and Jason Bean in second and third. The scratch prize, as usual, went to Alan Sheppard with a 79. In the afternoon we chose to play a Stableford competition over the front nine, which is why I chose to play my best golf on the back nine in a friendly skins game. The results were David Vidler 19, John Millen 17, George Brown 16. The trade prize winner and undoubted star of the afternoon was Bernard Dibhams with 20 points.

Our thanks to David Horne and his staff for their hard work on the course. I understand David has had a long period of staff shortage and his work load increased by having the extra responsibility of maintaining the newly laid areas on the new part of the course. We could all appreciate his need to crack on with his top-dressing programme with an ever busy fixture list.

I hope David will pass on our extra thanks to the Club's staff for their hospitality and a great evening meal. It was a shame that some were not present to appreciate it at first hand, but those who missed it also missed the chance to pick up prizes – if you miss the prize giving, you miss your prize!

I would like to thank my partners, David Goodhew and Ian Rawlings, for an enjoyable day and though we didn't feature in the prizes – playing golf that ranged from dire to exceptional – it's the taking part and comradeship that counts.

Last – thanks to our usual trade members for their continued support and a reminder that our next event is the Summer Tournament at North Foreland GC on July 17th.

PAUL COPSEY

## NORTHERN

Not a great deal happening around our section at the moment, which gives me a chance to mention education.

I recently attended a regional board meeting, where we were informed that each Club in the region had been sent a letter regarding greenkeeper education, outlining what is available to BIGGA members. Our administrator has asked me to ask you to find out your Clubs views and opinions about such greenkeeper training. I try to attend as many seminars and exhibitions as I can, as well as the management courses at Aldwark Manor, and they are really excellent. Members who do not attend are really missing out. I realise some Clubs do not support their staff on education, but PLEASE take the trouble to ask their opinions regarding the letter mentioned. Then let me know.

Finally, there are still a few places left for the Roses Match and the Autumn Tournament.

BOB LUPTON

## SOUTH WALES

Our annual competition for the Jacobsen Cup and Browns Shield was held on May 15th, the day being glorious, which in this job is a bonus when playing, but not when working.

The competition was well attended with 24 players contesting for glory and a mere handful falling by the wayside. The results were: 1st (Jacobsen Cup and Tankard) Dennis Jones – nett 69 on countback. A gross 81 was sufficient for Graham Cox to take the Browns Shield and Tankard and a nett 69 won Anthony Miller the Waycott Cup and Tankard.

A raffle was held to swell funds and Dennis Jones was again a winner, this time a shirt donated by SISIS. Anthony Jones won a bottle of scotch donated by Munro's and Les Hallett won a bottle of sherry donated by Avoncrop. Our thanks to sponsors, Munro's Horticulture and Keith Morgan of Usk, (Jacobsen Dealers) together with contributions to the prize table from Munro's, Keith Morgan, SISIS and Avoncrop. Without their help our section would not be thriving as well as it is.

Thanks are due to Glamorgan GC for their unfailing courtesy to us and to Michael Williams and his crew for the splendid course preparation.

PHILIP SWAIN

## AYRSHIRE



The Ayrshire group at Bogside Golf Club

Our Spring Meeting was held at Irving Bogside on May 20th, where an excellent days' golf was enjoyed, though by a disappointingly small turn-out. Could this possibly be due to the very difficult greenkeeping conditions 'enjoyed' in our area over the past few weeks? What we lacked in quantity was replaced by quality, both in standard of play and the Bogside course, ably presented by head greenkeeper Derek Wilson, who did wonders when one considers the vagaries of recent weather. Results were: Scratch: Gary Briden, Turnberry, 1st Class: D Gray, Kyle and Carrick. A Patterson, Powfoot. G Brown, Turnberry. 2nd Class: C Taylor, Powfoot. R Bruce, Stewarts. G Heron, Turnberry. New member: J Johnstone, Turnberry. Trade: D Duffy, Stewarts.

Will all section members make sure that lottery tickets are returned in good time (early July) to ensure they all get into the draw for The Open.

I'm just back from the Iseki Scottish finals at Fraserburgh and must tell you what a delight it was to play on such a natural old links course. Even the new holes being built have been kept in tune with the natural terrain. Architects please take note. Those of you who missed out this year on the Iseki Championship will just have to try harder in '92, otherwise you'll not get to play on gems like Fraserburgh.

DUNCAN GRAY

## EAST ANGLIA

Channels GC saw our first medal round for many a year and disaster is the word that springs to mind. Must have been a force ten blowing and it was always against us!

I managed a ten on one hole to equal Simon, who was playing equally scintillating golf. Hot Toddy managed several 'Barnes Wallace's' across ➔ 41



## MILL RIDE GOLF CLUB

has an immediate vacancy for

### 2 ASSISTANT GREENKEEPERS

Applicants should be qualified in all aspects of greenkeeping, with experience of modern machinery and post-construction maintenance. Salary negotiable. Help with accommodation may be provided.

Apply in writing with full CV to:

**Gordon Irvine, Course Manager, Mill Ride Golf Club, Mill Ride Estate, Mill Ride, North Ascot, Berkshire SL5 8LT**

## DOWNFIELD GOLF CLUB

INVITES APPLICATIONS FOR THE POSITION OF

### HEAD GREENKEEPER

From persons of proven ability with appropriate qualifications and experience in all aspects of course maintenance related to an inland championship course.

A comprehensive knowledge of machinery, and their maintenance, together with the ability to direct and motivate staff are essential qualities required of applicants.

The salary is negotiable and will reflect experience and qualifications.

No accommodation is available.

Applications in writing, including CV to:

**B. F. Mole Esq.  
The Managing Secretary  
Downfield Golf Club  
Turnberry Avenue  
Dundee DD2 3QP**

## Greenkeeper – South of France

First class Greenkeeper wanted for new 27 hole complex near Toulouse, France.

Degree/Diploma in subject related to turf grass agronomy or greenkeeping desirable, however proven practical ability will weigh heavily in selection of successful applicant.

Experience in machine maintenance, economy management, the ability to supervise staff and a working knowledge of satellite controlled irrigation system.

Also, a willingness to learn French.

Salary by negotiation.

Please post or fax CV with references to:

**Jim Lynch  
Golf Des Etangs De Fiac  
Brazis 81500 Lavaur  
France**

**Telephone: 010 33 63 70 70 85  
010 33 63 75 70 01**

**Fax: 010 33 63 75 75 09**

## COURSE MANAGER



### *The Beau Desert Golf Club Ltd.*

Applicants are invited for the above position who are fully qualified, with a thorough knowledge of greenkeeping, and have the ability to motivate and control Staff and take charge in all respects of Course management at this premier Midlands Club.

Salary negotiable in relation to the applicant's experience, qualifications and ability.

Apply in writing with full CV to:

**The Hon. Secretary  
Beau Desert Golf Club  
Hazel Slade  
Cannock  
Staffordshire WS12 5PJ**

# RECRUITMENT



GOLF CLUB  
RHEIN-SIEG  
E.V.

## Head Greenkeeper

This private club, near Bonn, Germany, requires a suitably qualified person, aged between 30 and 45 years, with experience to maintain and improve a good interesting course. (18 + 4 holes).

Applicants should have a sound knowledge of modern greenkeeping methods and be able to maintain a wide range of modern machinery. A knowledge of German would be of advantage.

The salary is negotiable depending upon experience.

*Applications in writing to:*

**The Secretary, Golf Club Rhein-Sieg  
Haus Dürresbach  
Postfach 1216, 5202 Hennef,  
Germany**



## TOTTENHAM HOTSPUR FOOTBALL CLUB

require a

### GROUNDSMAN

to take control of all aspects of pitch maintenance.

The successful candidate will be suitably experienced, able to work on his/her own initiative and used to budget planning and machinery maintenance.

Salary negotiable depending on experience and qualifications.

Applications in writing enclosing a full CV to:

**The Group Property Manager  
Tottenham Hotspur Football & Athletic Co. Ltd.  
748 High Road  
Tottenham, London N17 0AP**

## MILL HILL GOLF CLUB LIMITED



### ASSISTANT HEAD GREENKEEPER WANTED

Minimum of 5 years experience. Fully experienced in all aspects of greenkeeping, with practical knowledge of modern methods, machinery and irrigation equipment.

Holder of City & Guilds Certificate in Greenkeeping or equivalent. Member of BIGGA preferred. Salary in line with BIGGA rates. Excellent job prospects.

Apply in writing with CV to:  
**The Secretary, Mill Hill Golf Club  
100 Barnett Way, Mill Hill, London NW7 3AL**

### TECHNICAL SERVICES

## Foreman/Woman Greenkeeper

Hainault Forest Golf Course  
£11,000 plus overtime

This mature scenic and busy 36 hole public golf course and adjoining sports facilities are subject to compulsory competitive tendering. It is therefore important that candidates should have the ability to work within rigid specifications.

You should have a sound knowledge of fine turf culture, modern machinery and automatic watering systems. You should also have supervisory experience.

Hours of work are 39 per week on a rota basis including early mornings and weekends (paid at an enhanced rate).

For an application form please telephone 081 478 3020 ext: 2186 or write to the Directorate of Technical Services, London Borough of Redbridge, PO Box No 2, Town Hall, 128-142 High Road, Ilford Essex, IG1 1DD.

Closing date: 12th July 1991.  
Please quote reference CH65

*London Borough of*

**Redbridge**

## Hearsall Golf Club (1924) Ltd

require a

### FIRST ASSISTANT GREENKEEPER

Applicants should apply in writing stating qualifications, be fully experienced in the use of modern equipment and familiar with all aspects of greenkeeping and turf culture. Salary negotiable. No accommodation.

Replies in writing with CV to:  
**The Secretary, Hearsall Golf Club,  
Beechwood Avenue, Coventry CV5 6DF**

## LAMBOURNE GOLF CLUB

requires a qualified

### FIRST ASSISTANT GREENKEEPER

To help maintain this new 18-hole golf course due to open in Spring 1992.

Applicants should be qualified in all aspects of greenkeeping, with experience of modern machinery and post-construction maintenance. Salary negotiable. No accommodation.

Apply in writing with full CV to:  
**Tony French, Course Manager, Lambourne Golf Club,  
PO Box 1398, Maidenhead, Berkshire SL6 3BQ**

# Buyers' Guide

The most cost-effective way of reaching readers of Greenkeeper International. Simply ring 03473 581/2 and ask about an alphabetical category listing: the cost starts from the equivalent of under £21 per month.

## Aeration

### AERATION & DRAINAGE SERVICES



For Hire: Hydrojet, Verti-Drains and Turf Conditioners, etc.  
**Contact: Paul or Lesley Wright, Aeration & Drainage Services, 20 Westminster Close, Eastbourne, Sussex BN22 0LQ. Tel: (0323) 506725 Mobile: (0860) 838241**

## Arboriculture



All sizes of tree moving machines available for hire. Most machines equipped with flotation tyres. Also massive stocks of Nursery Grown Trees in all sizes.

Contact:  
**RUSKINS TREE MOVING LTD**  
 Wolves Farm, Wyatts Green, Brentwood, Essex CM15 0QE  
 Tel: 0277 353436  
 Fax: 0277 353916  
 Mobile: 0831 174 704

### MARTIN BROMAGE TREE SURGERY

- Tree Moving
  - Tree Planting
  - Tree Stump removal
- Nationwide service  
 Coopers Hill Gloucester GL3 4SB  
 Tel: (0452) 862110  
 Mobile: (0831) 577777

### LARGE TREES

#### FOR INSTANT MATURITY!

Supplied and planted nationwide from our extensive nursery stocks exceeding 200 varieties and species. Also our Tree Spades on 4 x 4 Tractors transplant trees on site economically.

### CIVIC TREE CARE LTD.

102 High Street, Tring, Herts. HP23 4AF  
 Telephone 044282 5401  
 and 081 950 4491  
 FAX 0442 890275  
 Call us for stock list and advice.



### DOLWIN AND GRAY

(1969-1990)

Arboriculture and Forestry Consultants and Contractors  
 Approved Landscape Contractors  
 Game Covert Design (SE England)



Alpha House  
 Crowborough Hill  
 Crowborough  
 East Sussex  
 TN6 2EG  
 Tel (0892) 664612



## Artificial Grass

UNIVERSAL MATERIALS CO. LTD.  
 The Golf Mat Specialists

### UNIMAT AstroTurf

Also Easy Picker  
 Ball Harvesters and Washer  
 5/7 High Street,  
 Dorchester-on-Thames,  
 Oxfordshire OX9 8HH  
 Tel: (0865) 341580.  
 Fax: (0865) 341575

### TEETECTOR TEE MATS

The mat with the guarantee  
 Unique heavy duty golf range and municipal mats.  
 25mm hand finished woven pile.  
 20mm shock pad.  
 Professional galvanised and painted frame. Any size, any shape. Double sided.  
 Free Demo unit available.  
 Trade welcome. Putting surface.

Contact:

**Evergreens UK**

2 Extons Units  
 Market Overton  
 Oakham,  
 Leics LE15 7PP  
 Tel: (0572) 838208  
 Fax: (0572) 838261



## Bark

### NATURAL ALTERNATIVE TO PEAT

Bark for Mulching, Walk Chips or Woodfibre for those woodland tracks and walkways between green and tee. Biomulch for large scale economic ground cover. Playbark for adventure playgrounds. Soil conditioners, top dressings and loam are all available. Telephone 0666 502711 or write for free colour brochures.

**MELCOURT INDUSTRIES LTD**

Tetbury, Glos GL8 8JG  
 Tel: 0666 502711  
 Fax: 0666 504398

## Bins

### LISTER

by  
**Green Brothers (Geebro) Ltd**  
 South Road, Hailsham  
 BN27 3DT. Tel: (0323) 840771  
 Fax: (0323) 440109

## Buildings



Storage for all your greenkeeping equipment.  
**Elwell Buildings Ltd**  
 021 553 5723

## Compaction

THE PROBLEM ...  
**COMPACTION**  
 THE SOLUTION ...  
**TWOSE 3 OR 7 LEG TURF CONDITIONER**

### PROFESSIONAL GRASS CARE

Ring now for more information on our specialist hire equipment  
 Tel: (0507) 600989  
 Fax: (0507) 609009



## Compost



### Compost and Top Dressings Manufacturer

A specially formulated range of quality composts to ensure strong, healthy plants.  
 Delivered pre packed or bulk

### TUNSTALL BRAND COMPOSTS

Eden Park Ltd, Tunstall  
 Sittingbourne, Kent  
 Tel: 0795-471583/478108



### Golf Build (UK) Ltd

**GOLF COURSE AND DRIVING RANGE CONSTRUCTION**

Sedlescombe, East Sussex  
 TN33 0SD  
 Tel: (0424) 870888  
 Fax: (0424) 870855

## Construction



contractors

### GOLF COURSE CONSTRUCTION SERVICES

include  
**FEASIBILITY  
 PLANNING PROGRESSION  
 DESIGN SPECIFICATION  
 CONSTRUCTION  
 DRIVING RANGES  
 GOLF COURSE DRAINAGE**  
 High Street, Cranleigh, Surrey  
 Tel. (0483) 274800

### R. A. SLEATH & SON

**GOLF COURSE CONSTRUCTION AND DRAINAGE**

#### Specialising in Golf Greens

Work undertaken for many leading Golf Course Architects  
 Distance no object  
 Contact: **Geoffrey R. Sleath**  
 Tel: Rotherham (0709) 862109 or 862075

## Course Accessories



### Midgley Nicholls

#### GOLF BALL DISPENSERS

Up to 50,000 ball capacity  
 Automatic Loading and Washing Systems. Full Guarantee and Servicing  
 Manufactured in England by BHN Engineering Limited

Also suppliers of a complete range of ancillary equipment including collectors, mats and balls, etc.

Tel: 0252 341665  
 Fax: 0273 571621  
 after office hours 0273 602637

### Pattison

Manufacturers and suppliers of course and driving range equipment.

Pattison & Co. Ltd  
 342 Selbourne Road, Luton,  
 Beds LU4 8NU  
 Tel: (0582) 597262  
 Fax: (0582) 505241

### Specialists in SPORTSFIELD and GOLF COURSE CONSTRUCTION

#### Conservation & Leisure Ltd

Chapel Farm, By-Pass Road,  
 Ightham, Sevenoaks,  
 Kent TN15 9AF  
 Tel: 0732 455244  
 Fax: 0732 350351

## Course Accessories

**TACIT**

Looking for quality Golf Course Equipment?  
Look for Tacit  
48 Hillmorton Road, Rugby, CV22 5AD  
Tel: (0788) 568818

## Drainage



White Horse Contractors Limited

CONSTRUCTION  
DRAINAGE  
VERTIDRAINING

Tel: (0865) 736272

## Fertilizers

**Osmocote N**

Environment friendly 100% controlled release nitrogen assures optimum results. Detailed trial results by STRI on request from

**Sierra UK Ltd**

61 Loughborough Road  
West Bridgford, Nottingham NG2 7LA  
Tel. (0602) 455100. Fax. (0602) 455311

## Grass Cutting Equipment

**Reconditioned  
Golf Course Machinery!**

FOR IMMEDIATE DELIVERY  
OR EXPORT. PHONE FOR  
CURRENT CATALOGUE NOW

GREENSWARD ENGINEERING COMPANY (0532) 676000  
OR DIALLING FROM ABROAD + 44 532 676000

## Grass Germination

**TILDENET**

**Grass Germination Sheet**

- speeds up germination
  - encourages rapid uniform growth
- Tried, tested and proven by groundsmen nationwide

Longbrook House, Ashton Vale Road, Bristol BS3 2HA  
Tel 0272 669684 Fax 0272 231251

## Grass Reinforcement

**TECNOTILE**

The flexible grass reinforcing surface available in sheets of 10 sq. feet  
Tel: 071 639 2846  
Fax: 071 639 2618

## Grass Seed Mixtures

**Mommersteeg**

**Grass Seed Mixtures**  
For sports turf, amenity  
and land reclamation use

Station Road, Finedon, Wellingborough,  
Northamptonshire NN9 5NT  
Telephone: Wellingborough (0933) 680891  
Telex: 311234  
Fax: (0933) 682022

MEMBERS OF A.G.M.A.  
MEMBERS OF B.A.L.L.  
MEMBERS OF B.G.C.C.

## Grinding Machines

**MOWER GRINDING MACHINES**



**ERIC HUNTER GRINDERS LTD**

Hobson Industrial Estate,  
Burnopfield,  
Newcastle upon Tyne NE16 6EB  
Tel: (0207) 70316.  
Fax: (0207) 70312

## Irrigation

**Watermation**

Manufacturers, designers  
and installers of  
**AUTOMATIC  
IRRIGATION**  
for 21 YEARS  
Tongham Road, Aldershot,  
Hants GU12 4LL  
Tel: 0252 336838  
Fax: 0252 336808

**PRIME WATERMEN LTD**

Wangford, Beccles,  
Suffolk NR34 8AX  
Tel: 050 278 481  
Fax: 050 278 729  
**Weathermatic Distributor**

**TORO**

**PAR 4**

**IRRIGATION SYSTEMS**

Installation Sales & Service  
North & North East of England

Contact: E. B. & L. Simms  
Tel: (0765) 602175. Fax: (0765) 603488  
Par 4, Unit 18, Camphill Close, Dallamires  
Lane, Ripon, N. Yorks HG4 1TT



**STRANCO**

**Water Quality Control**

pH and chlorine control and dosing systems for your irrigation water, for improved turf quality. Nationwide installation and commissioning service, and advice.

Contact Brian Sykes  
STRANCO LTD  
Commercial Road, Eastbourne,  
East Sussex. Tel: (0323) 646163

**Wright Rain**

**RAIN BIRD**

The unbeatable partnership  
in golf course irrigation

RINGWOOD, HANTS, BH24 1PA

Tel: (0425) 472251

Fax: (0425) 472258

**B**

SERVICE

**TORO**

IRRIGATION

**BELL TURF & IRRIGATION  
SERVICES**

East Midlands Area  
Installation, Sales and  
Service

Everton, Doncaster, DN10 5DR

Tel: (0777) 817410

For all aspects of Golf Course



- Irrigation
- Installation
- Service
- Extensions/Improvements
- Pumping systems
- Advisory services

ILS, 34, Station Road,  
Nassington,  
Peterborough PE8 6QB.  
Tel: (0780) 782375

**L.S. Systems**

- for
- ★ Water Storage Tanks ★
- ★ - Spraylances + Couplings ★
- ★ Dosmatic-Simple Fertilizer Dosing ★
- ★ Cooper Pegler Knapsack Sprayers ★
- ★ Pumps ★

- If it's water, contact Darren  
at 188 Blackgate Lane,  
Tarleton, Preston, Lancashire  
on - 0772 815080  
Fax - 0772 815417

**FLANDERBLADE LTD**

Specialists in golf course irrigation  
20 Whiteacre, Littlehampton,  
West Sussex BN17 7JA  
Tel: (0903) 724545  
Full member of B.T.L.I.A.

**T. & G. TURF  
IRRIGATION SERVICES**

8 Whitcliffe Grove, Ripon,  
North Yorkshire HG4 2JW  
Tel: (0765) 2941 (0423) 864963  
Full member of B.T.L.I.A.

**BRITISH OVERHEAD  
IRRIGATION LTD.**

- Manufacture Equipment
- Design and Install Systems

The Green, Upper Hallford,  
Shepperton, Middlesex TW17 8RY  
Tel. (0932) 788301. Fax. (0932) 780437

## Mole Ploughs

**L. D. BOURGEIN OXFORD LTD.**

South Hinksey, Oxford OX1 5AZ  
Tel: 0865 735420 Fax: 0865 326155



Sole UK Importers of  
the CASE Mole Plow

## Mower Spares

**MOWER ACCESSORIES  
LTD**

Manufacturers of high  
quality lawnmower  
blades and cylinders.  
Suppliers of spares and  
accessories.

65 Forncett Street  
Sheffield S4

Tel: 0742 765825

Fax: 0742 765855

## Pumps

**GRUNDFOS  
PUMPS**

FOR SPORTS & RECREATIONAL  
TURF IRRIGATION, BOOSTING  
AND WATER SUPPLY

Contact our sales offices today for  
full information on the Grundfos range

SOUTH: (0525) 850000  
NORTH: (0925) 813300

**GRUNDFOS**

GRUNDFOS PUMPS LTD, GRUNDVOLDY VEJ 60  
DK-8600 BRUNSBY, DENMARK

## Railway Sleepers

**RAILWAY  
SLEEPERS**

Top quality for bunkers, bridges,  
etc. Prompt nationwide delivery.

Tel: (0483) 720455

**J. HARVEY SERVICES**  
Downside Goods Yard  
Guildford Road, Woking,  
Surrey GU22 7QE

## Sand/Silica Sand



The leading supplier of  
**MONEYSTONE**  
Britain's  
most popular,  
top quality  
**BUNKER SAND**

1a Clifton Street, Alderley Edge,  
Cheshire

Tel: Alderley Edge (0625) 584571/  
585143. Fax: (0625) 586130

## Sand

**PROFESSIONAL TURF  
DRESSINGS FOR THE  
PROFESSION**

**Sand**

All sand requirements catered for  
including lime free  
Also lime free Horticultural Grit - and  
Wood Chips. Nationwide deliveries.

**Bailey's of  
Norfolk**

Brick Kiln Rd, Hovingham, Norwich,  
Norfolk NR10 5NL.  
Tel. 060 548 607. Mobile 0860 661603

## Sand

### GARSIDE SANDS



Complete range of dried graded silica sands for all purposes  
Contact John Deavan at 39 Hockliffe St., Leighton Buzzard, Bedfordshire LU7 8HB. Tel: (0525) 372201. Fax: (0525) 851572. Telex: 825868



### MONEYSTONE BUNKER SAND

Granular and Free Draining  
Delivered loose bulk, all parts.

For cheapest prices contact:  
Jim Burrows at  
**M & B SUPPLIES**  
Paynter Street, Fenton,  
Stoke-on-Trent, Staffs ST4 3JL  
Tel: (0782) 598383  
Fax: (0782) 598174

### CROW SAND & GRAVEL LTD

(Part of Gables Group)  
Specialists in all types of sands and gravels contact:  
**DICK GUNN**  
at The Gables, Stanstead Road,  
Elsenham, Essex, CM22 6LJ  
Tel: 0279 647647. Fax: 0279 816627

## TOP GRADE TOP DRESSINGS

Lime free, dried or  
moist - washed sands  
Bulk 24 hour delivery

## ARNOLD SANDS FOR INDUSTRY

Joseph Arnold and Sons Ltd  
Billingdon Road Leighton Buzzard  
Bedfordshire LU7 8TW  
Telephone: 0525 372264  
Facsimile: 0525 851620

## BUCKLAND

Sand and Silica Company

COMPLETE RANGE OF  
HORTICULTURAL SANDS

South of England  
Contact Lynda Jordan  
Buckland Sand & Silica Co.  
Reigate Heath, Reigate,  
Surrey RH2 9RG  
Tel: (0737) 240151

North of England  
Contact: Tony Rodgers  
Buckland Sand & Silica Co.  
Blubberhouses, Otley,  
West Yorkshire, LS21 2PN  
Tel: (094388) 331



Suppliers of all grades of sand  
and gravel drainage media.

**HALL AGGREGATES (South East) LTD**  
RMC HOUSE, CANNING STREET,  
MAIDSTONE, KENT ME14 2RX  
Tel: (0622) 761281  
Fax: (0622) 692433

## Seats

### LISTER

by  
**Green Brothers (Geebro) Ltd**  
South Road, Hailsham  
BN27 3DT. Tel: (0323) 840771  
Fax: (0323) 440109

## Screeners/Shredders



**GRADEALL INTERNATIONAL LIMITED**  
Manufacturers of the S5100  
Screener/Shredder

9 Farlough Road, Dungannon,  
Northern Ireland BT71 4DT  
Tel: 08687 40484 • Fax: 08687 48823

## Signs

**SHELLEY SIGNS LIMITED.**

ENTRANCE, "T" MARKERS & GENERAL SIGNS.  
IN HIGHLY DURABLE GLASS REINFORCED PLASTIC.  
EATON-ON-TERN, MARKET DRAYTON,  
SHROPSHIRE, TF9 2BX.  
Tel: 095 283 483. Fax: 095 283 755.

### PEARTS QUICKSIGNS

Embossed aluminium  
and engraved signs.  
Unit 9, Littlemead Ind. Est.,  
Cranleigh, Surrey GU6 8ND  
Tel: (0483) 272329 Fax: (0483) 272329

## Stone Picking



### DO YOU HAVE STONE AND DEBRIS TO REMOVE?

We have the equipment and experience to  
undertake all stone picking and associated  
landscape works.  
All areas.  
Contact PAUL JAMES  
Tel: (0734) 320539  
Fax: (0734) 320705

## Tee Mats

## TUFTURF

ARTIFICIAL GRASS  
TEE MATS  
& PUTTING SURFACES  
FROM

### CARPETITION LTD.

14 Kaffir Road, Edgerton,  
Huddersfield HD2 2AN.  
Tel: (0484) 428777  
Fax: (0484) 423251

## Top Soil

## DAWITHERS

(Established 27 years)

Suppliers of  
TOP DRESSING  
VARIOUS GRADES OF SCREENED  
LOAMS AND TOPSOILS  
BUNKER AND WASHED SAND

Honeypot Farm, Honeypot lane,  
Edenbridge, Kent  
0732 865433 (office)  
0860 543370 (mobile)

### PROFESSIONAL TURF DRESSINGS FOR THE PROFESSION

**Screened Top Soil**  
Including the finest of Black Fenland soil.  
Screened loams to customers' individual  
specifications.  
Nationwide deliveries.

### Bailey's of Norfolk

Brick Kiln Rd, Hevingham, Norwich  
Norfolk NR10 5NL.  
Tel. 060 548 607. Mobile 0860 661603

SCREENED TOP SOIL SUPPLIED  
AND DELIVERED COUNTRYWIDE  
ALSO WOOD MULCH

For quotes ring

### JAMES DANDY

Tel 0244 335775 Mobile 0836 598388

## Trenchers

### CASE TRENCHERS TRENCHEX PLANT SALES

Dove Fields, Uttoxeter, Staffs.  
Fax: (0889) 563140.  
Tel: (0889) 565155

## Turf

### FRASER GROWN LAWN PROFESSIONAL



Specialists in growing all  
grades of turf aimed specifi-  
cally for all aspects of golf  
course requirements. We  
deliver with our own fleet of  
vehicles with rear mounted  
fork lifts and HIAB mounted  
cranes, for your convenience.

### Telephone

Chester (0244) 660901

### Fax

Chester (0244) 660468

WE GROW TURF TO SUIT  
THE FUTURE OF GOLF

## INTURF

For High Quality Cultivated Turf  
on the NEW BIG ROLL Turf Laying System  
Tel: (0759) 304101 Fax: (0759) 305229

## Turf Dressings

### PROFESSIONAL TURF DRESSINGS FOR THE PROFESSION

### Golf Turf Dressings

Professionally approved formulations for  
use in construction and on the finest  
greens. Tees and fairways. Nationwide  
deliveries.

### Bailey's of Norfolk

Brick Kiln Rd, Hevingham, Norwich  
Norfolk NR10 5NL.  
Tel. 060 548 607. Mobile 0860 661603

### FEN TURF DRESSINGS LTD

Manufacturers and distributors of  
FENDRESS also Prescription Dressings  
Contact: Fen Turf Dressings Ltd  
2 Angel Court, Dairy Yard, High Street,  
Market Harborough, Leicestershire, LE16 7NL  
Tel: Market Harborough (0858)  
464346/433003. Fax: (0858) 434734

## BL BOUGHTON LOAM LTD.

For  
**TURF DRESSINGS  
ROOT ZONE MIXES  
SCREENED TOP SOILS  
BUNKER SANDS  
HORTICULTURAL  
COMPOSTS**

Telford Way, Kettering,  
Northants  
Tel: 0536 510515

## Rufford

TOP-DRESS SUPPLIES

Britain's No. 1 for

QUALITY  
SERVICE  
SHEER VALUE FOR  
MONEY

Nucks Wood Quarry, Wiggins Lane,  
Rufford, Nr Southport, Lancs L40 1UJ.  
Tel. (0925) 232476



The finest quality top  
dressings for fine turf

1a Clifton Street, Alderley Edge,  
Cheshire  
Tel: Alderley Edge (0625) 584571/  
585143. Fax: (0625) 586130.

## Turf Netting

### CONWED TURF REINFORCEMENT

'for the fastest turf production'

WEST MIDLAND TURF GROWERS  
Tel: (074-631) 247 Fax: (0746) 767331

## Verti-Drain Hire

### ROSS OLIVER

SPORTS GROUND CONSTRUCTION  
AND MAINTENANCE

The most comprehensive service  
in the south west including

- VERTI-DRAIN for Greens and Sportsgrounds
- RYAN HOLLOW TYNER
- SAND SPREADERS
- DIRECT DRILLS

Contact: Ross Oliver, Greystones,  
Trebudannon, Cornwall, TR8 4LP  
Tel: (0637) 880257

### NB1 BUTLERS TURF MAINTENANCE & MACHINERY

Gill Overseeder  
Coremaster Hollow Corer  
Top Dressing Machines

— all available for hire  
Full range of secondhand  
machinery available for sale

Tel: 081 974 2708  
or 0831 364774



## Verti-Drain Hire

**WORTH  
DRAINING**

### VERTIDRAIN HIRE

Contact Peter Bloodworth  
**WORTH  
DRAINING**  
Cornbecks Farm  
Irnham, Grantham,  
Lincolnshire 0476 84266



**VERTIDRAIN MACHINERY**  
SLIT DRAINAGE EQUIPMENT  
AVAILABLE FOR HIRE  
Contact Peter Holmes,  
10 Carson Road,  
Gainsborough, Lincs DN21 2RE  
Tel: 0427 613035 • Mobile: 0831 359394

### E & S SPORTSGROUND CONTRACTORS

Only a sample of our services:

Drainage  
Verti-Drain  
Overseeding  
Sand Spreading

Contact: RICHARD VEITCH  
39 Knox Green, Binfield, Bracknell,  
Berks RG12 5NZ  
Tel: 0344 860690

Vertidrain, Charterhouse  
Overseeder, Coremaster  
Hollow Corer -  
all available for hire.  
New and used Compact  
Tractors and Sportsurf  
Equipment supplied including  
Lesco 300D Greensmower.

**R. J. & J. CAMPEY**  
The Dairy, Marton Hall Lane,  
Marton, Macclesfield.  
Tel 0260 224568 or 0860 451011

# AROUND THE GREEN

35 → the lakes but failed to make the leader board on this occasion. Those who made it were (all nett) : 0-18: Mike Fance, 70. Ernie Hart, 74. Andy Shin, 75. 19-28: Mel Brown, 70. Martin Forester, 75. Martin Myson, 81.

Our thanks to Channels for an interesting day and to their captain, Bob Salmon, for presenting prizes donated by Colliers, Kings, Cowies, CMW, Rigby Taylor and Pattissons.

MICK LATHROPE

### SCOTTISH REGION

Fraserburgh GC was the venue for the Scottish Region Iseki finals on May 28th. Travelling up the evening before it was a beautiful night and all looked set for a great day to follow. Came the dawn the sky was overcast and grey and the temperature was chilly to say the least. However it was dry and it warmed as the day wore on.

The course was in excellent order, thanks to Gordon Moir and his team, and the hospitality and catering was first class - thanks to Brian and Karen Thomson and their staff. We especially thank Alan Bolt, Captain of Fraserburgh, for joining us at the presentation to say a few kind words, and to his council for giving us the courtesy of the course. Our thanks also to Iseki - represented by Peter Powell and ably abetted by Hadyn Wheeler for their sponsorship and to Reekie Plant for their demonstration tractor.

RESULTS: 1st Class: 1 Kevin Peace 72-2=70. 2 Gordon Moir 75-4=71. → 42

## Classified

### ATVs



**LOGIC**  
THE NAME BEHIND ATV  
VIDEO  
2  
ATVs AT WORK  
PICK UP A COPY  
ON FREE LOAN FROM

**YOUR LOCAL ATV DEALER**

For participating Dealers Phone LOGIC NORTH 0434 606661  
LOGIC SOUTH 0451 60682

### For Sale

**TORO GREENSMASER 300**  
with groomers. Re-painted and fully re-conditioned.  
**RANSOMES MAGNA Mark 10**  
with set of 3 trail gangs. Re-painted and fully re-conditioned.  
**RANSOMES 180**  
Re-ground cylinders and new bottom blades.  
**SISIS SOIL SCREEN & ELEVATOR.**  
Very good condition.  
Contact: RICHARD COLE  
Tel: (0836) 745138  
(Messenger Service)  
(0733) 203817

### FOR SALE

1 set of Atco Gangmowers, 5 unit, PTO driven, recent overhaul, plus various spares  
**£900 ono**  
Contact: The Course Manager, H.C.E.G., Muirfield, Gullane, East Lothian EH31 2EG  
Telephone 0620 842123

A set of 5 Beaver TM 508 Hydraulic Trailed Gang Mowers. One season old.  
**£8,000 ono.**

Apply to:  
The Secretary, Barrow Golf Club, Rakesmoor Lane, Hawcote, Barrow in Furness, Cumbria  
Tel: (0224) 835213

## Machinery For Sale

Unused new equipment.  
New Jacobsen Green King  
New Jacobsen Turf Cat  
New Jacobsen LF 100  
Iseki 320 Tractor  
**35% off list price.**

Contact Mr Stuart  
**0279 722333**

### Turf Dressings



**GreenWoods of the South of England**

### TOP DRESSING

- Top Soil
- Screened Loams
- Construction Mixes
- Sands
- Horticultural Composts
- 24 Hour Delivery
- Greens and Tees constructed by the Professionals

Tel: 081 546 3960  
Fax: 081 547 1923

Established over 23 years

**Marygrove**  
THE BEST

**TOP DRESSING**  
WITH OPTIONAL SEAWEED ADDITIVES

Plus Bark, Fen and Meadow Loams, Silica Sands, Peat, Fertilisers, Manures and Grass Seed Mixtures

Manor Farm, Abbotsley, Cambs PE19 4UW

Call Carol:  
Tel: (07677) 296  
Fax: (07677) 7901

### Grass Cutting Equipment

**F.A.R.M.  
Ltd**

For the best in Rotary and Flail Mowers.  
Front Mounted/Rear Mounted with side or rear discharge.  
4' to 7'6" cutting width  
Rotary Tillers  
Compact Power Harrows

Further details:  
Tel: 0386 765770  
0386 442082  
Fax: 0386 765183

41 ➔ 3 Graham Robbins 79-8=71. 4 Stuart Taylor 73-1=72. 2nd Class: 1 David Montgomery 76-12=64. 2 Kenny Anderson 81-14=67. 3 Stuart Sime 85-15=70. 4 David Sinclair 86-15=71. 3rd Class: Wilson Morrison 93-24=69. 2 Alasdair Fraser 96-24=72. 3 Stuart Donald 94-22=72. 4 Steven Frost 94-20=74.

The team prize was won by the North Section with a total of 571, just pipping the West with 576.

Peter Powell gave a special prize to Ian McDougall of Crieff for determination. His car expired 60 miles from Fraserburgh at 9.30am, but after seeing it into the hands of a motoring organisation, he arrived by taxi at 1pm. Ian's 80-6=74 was not a bad score in the circumstances. All in all it was a good day and as I said last year, with the road system we now have, it is not nearly as far as it sounds.

ELLIOTT SMALL

#### NORTH EAST

Our annual Spring Competition was held at Bamburgh Castle on April 25th, the first time we had played there, though hopefully not the last. Set in idyllic surroundings with the famous castle behind us and miles of golden sands in the distance, this course is a 'must' for all who have not experienced its charms. Our thanks then to the greenkeeping staff for such excellent preparation and to the committee for granting us courtesy. The event,

# AROUND THE GREEN

sponsored by Ryton Gravel Co; Turf Care Supplies; Bland Short; Stewarts; Thompsons Quarries and Maxwell Hart, was a great success and we acknowledge with thanks their generosity.

Results: Best Gross: M Simpkin, Parklands GC, 75. Best Nett; S Cram, Slayley GandCC, 89-24=65. Assistant's Cup: J Pattinson, Gosforth GC 89-20=69. Leading Nett scores: M Gunn 77-7=70. G Baxter 89-18=71. P Robison 77-6=71. C Patterson 76-5=71.

Our congratulations to Craig Kilgour, 19, assistant greenkeeper at Ponteland GC, on winning the Durham County 72 hole Stroke Championship.

Membership of the North East section continues to rise, now up to nearly 90, due in no small part to the efforts made in spreading the good word about the benefits of joining BIGGA. Keep them coming in!

JIMMY RICHARDSON

# 4

## GOOD REASONS WHY YOU SHOULD USE COCKLESHELL FOR ALL YOUR PATHS

1. No damage to your mowers – saving you time and money
  2. It always looks clean – especially after rain
  3. It can be used on all paths – right up to the edge of the grass
  4. You can put it directly onto sand – and it stays on the surface
- ...and if you want a 5th... over 150 golf clubs already supplied can't be wrong!  
(Including Sunningdale, St Georges, North Hants, Knole Park, and Gerrards Cross).

Contact us today for a leaflet and a sample – or you can do it tomorrow, because we've been in business for over 100 years so we'll still be here! Deliveries nationwide.

**10% SUMMER DISCOUNT**  
for orders placed before 31st August.  
Send for a 3 litre free sample

**DEVENISH LTD suppliers of shell sand and top soil**

**60 Hambro Hill, Rayleigh, Essex SS6 8DH Tel: (0268) 743866/7**

**COCKLESHELL:**  
The 'natural' choice for paths

AD REF 307



## WELCOME TO A WORLD WHERE THE GRASS IS ALWAYS GREENER.

Rhône-Poulenc provides the professional with a range of effective, dependable products to control turf diseases.

ROVRAL GREEN is a contact fungicide with both curative and preventative action. It's quick action in combating turf disease makes it the ideal product to rely on at any time of the year.

QUINTOZENE WETTABLE POWDER is a contact fungicide which controls the main disease problems of U.K. turf. Use it to ring the changes and keep one step ahead of turf disease.

MILDOTHANE TURF LIQUID is ideal for use during periods of active grass growth when it's systemic action both cures and prevents disease.

Rovral and Mildothane are also available in CDA formulations. No water to add, no mixing, no handling of chemicals - and both products can be applied through most CDA lances with a droplet size of 200-300 microns.

 **RHÔNE-POULENC**

AD REF 59

Environmental Products, Regent House, Hubert Road, Brentwood, Essex CM14 4TZ. Telephone 0277 261414

ROVRAL CONTAINS IPRODIONE. QUINTOZENE WETTABLE POWDER CONTAINS QUINTOZENE. MILDOTHANE CONTAINS THIOPHANATE-METHYL

**READ THE LABEL BEFORE YOU BUY: USE PESTICIDES SAFELY**



# NOW WE'VE GONE FOR A DRIVE

Our Lesco Greens Mower is an amazing success (we're selling more pro rata than anyone else in Britain). So now we've added a Fairways Mower. It has a complete hydraulic operation system, excellent stability, superb performance and much more. The Lesco policy is simple and very professional, provide the greenkeeper with unrivalled quality, value, and backup then offer it, unlike some of our rivals, at a sensible price. You know the only way to choose a mower is to test drive it first so give us a call and we will arrange a demonstration... and a comparison!

**LESCO**  
FROM CDC

**Quality doesn't always cost the earth**

CDC Group plc, Chapel Works, Waldringfield, Woodbridge, Suffolk IP12 4PT. Telephone: (0473) 36791

# When less means more

75 sq. yds. of turf = 3 Lawn Tech. rolls *or* 112 standard rolls

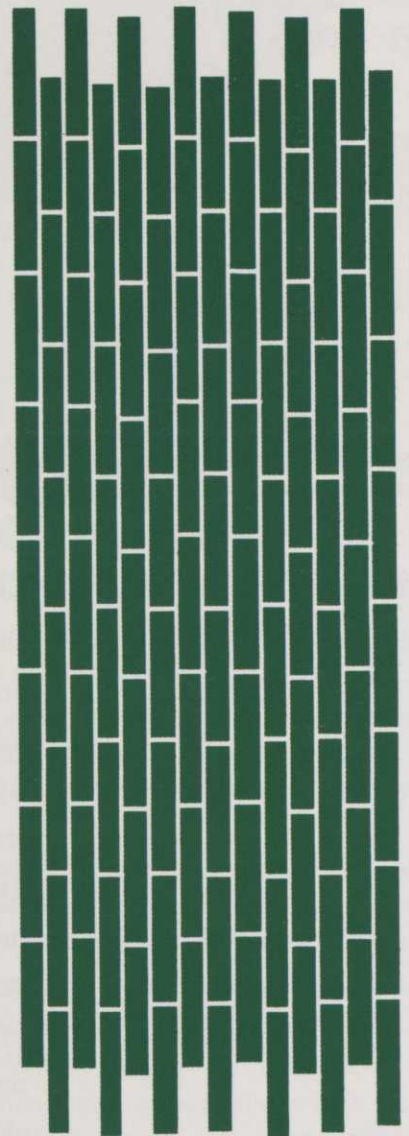
## Less

- joints
- shrinkage
- slippage
- weeds
- stress
- time to lay
- after-care
- cost
- delay to use

## More

benefits  
for contractors and clients

A complete turf supply and installation service for sports landscaping and utility contracts



Big 25 sq.yd. turves laid in minutes.

Please send me without obligation GI.7.91  
More information/demonstration . . .   
A quotation/site visit . . . . .  Please tick

Name \_\_\_\_\_  
Address \_\_\_\_\_  
\_\_\_\_\_



Lawn Technology Ltd., Turf House, 16 Invincible Road,  
Farnborough, Hants GU14 7QU Tel: 0252 370101. Fax: 0252 370241