

Advisory Services · Agrochemicals
Demonstrations · Education and Training
Mowing and Maintenance · Irrigation
Recreation and Playground Equipment
Seeds, Turf and Plants · Sports Goods
Waste Disposal



Arboriculture and Forestry · Buildings
Engines and Motors · Lectures and Films
Outdoor Furniture · Plant and Machinery
Protective Clothing · Safety and Security
Technical Books and
Trade Journals

ROYAL WINDSOR '87

15th-17th SEPTEMBER 1987: 10am-5pm DAILY

The main event for the Professional Groundsman, Greenskeeper, Landscape Architect, Estate Owner and Manager, Site Operator and Local Authority Employee.

The finest opportunity to see a whole range of developments, discuss services and techniques with experts, and check-test the latest in machinery and equipment.

Venue: The Royal Windsor Racecourse, Maidenhead Road, Windsor, Berkshire. Dates: 15th, 16th and 17th September 1987. Times: 10 am till 5 pm daily. Entrance: By Catalogue £2.00. Complimentary admission to IoG Members.

How to get there: (Windsor is just 22 miles west of London).

By Road: A few minutes off the M4 Motorway (Junctions 8/9 or 6) on the Windsor - Maidenhead road (A308). Ample car parking facilities available at £2.00 per vehicle. Coaches free.

By Rail: Frequent services to Windsor from Waterloo, Reading and Paddington with connections to all parts of the country. A complimentary coach service direct to the Exhibition grounds will operate each morning and afternoon from Windsor & Eton Central and Riverside stations.

By Air: Close to London Heathrow and convenient also for London Gatwick airports.



Organised annually by:
The Institute of Groundsmanship,
19-23 Church Street, The Agora, Wolverton,
Milton Keynes, Buckinghamshire, MK12 5LG
Telephone: Milton Keynes (0908) 311856

This issue

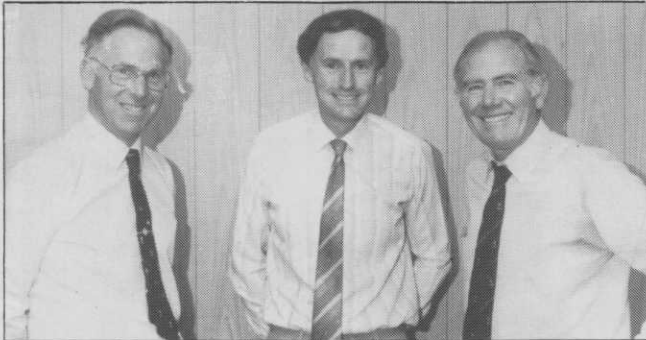
JULY 1987

Front cover: There was universal acclaim for the condition of Jack McMillan's Sunningdale golf course during the Walker Cup and further cause for celebration in the McMillan family camp - see page 11.

ASSOCIATION APPOINTS EXECUTIVE DIRECTOR

3

Neil Thomas gets the top BIGGA job



JOIN BIGGA NOW

6

Your application form - don't delay, send it off today!

GREENKEEPING CAN BE A 'BOARING' CHORE!

8

It certainly is at times for Simon Taylor in the first of a series that looks at the profession abroad

MACHINERY REVIEW

10

The Huxley TR138 - and some of its stablemates - comes under our spotlight

NOTEBOOK

11

Talk of the trade

TOO MUCH WATER OR TOO LITTLE?

12

The NTC's 4th residential seminar could provide the answer

PEOPLE, PLACES, PRODUCTS

14

OUT ON THE COURSE

18

With Ken McNiven

EDUCATION CORNER...

20

APPOINTMENTS

22

And there are more on page 9!

BUYERS' GUIDE

23

Publisher: Fore Golf Publications Ltd

Managing Director: Michael Coffey

Editor: Robin Stewart

Contributors: Jim Arthur, John Campbell, David Jones, Jimmy Kidd, Jack McMillan, Eddie Park, Donald Steel, Howard Swan, Peter Wisbey and Walter Woods

All advertising matter, editorial copy and correspondence should be sent to: *Greenkeeper*, 121-123 High Street, Dovercourt, Harwich, Essex CO12 3AP. Tel: 0255 507526

Subscription rates:

UK-£18 USA-\$45 Continent-£30 Eire-IR £23

Greenkeeper is published ten times a year. Printed in England by J.B. Offset, Marks Tey, Colchester, Essex.
Copyright: Fore Golf Publications Ltd 1987

Association appoints executive director



NEIL THOMAS (above) is the new executive director of BIGGA and, from August, he will be based at the Sports Turf Research Institute, Bingley, West Yorkshire.

His family - wife Elaine, Scott, four, and Grant, two - was recently augmented by another young member and is looking forward to establishing a new home in Yorkshire.

Neil was born in Penarth, South Wales. He attended the local grammar school and, subsequently, the University of Wales at Cardiff, where he obtained a history degree. He later entered local government and soon became a principal officer in the social services department of the newly formed West Glamorgan County Council.

His management progress did not stop there - as a chief administrative officer, he managed personnel, financial and general support services within a large social services department. His experience embraces committee work, working parties and industrial relations.

Neil's first sporting loves were rugby, tennis and cricket, turning out for Penarth in the Welsh Clubs' Cricket Conference. He became hooked on golf following a visit to that memorable 1975 Open at Carnoustie, when Tom Watson held off the luckless Jack Newton in a play-off.

"I've been a fan of Tom Watson since and, in recent years, have enjoyed the meteoric rise of fellow Welshman Ian Woosnam. Carnoustie gave me the inspiration to take up golf and I joined Fairwood Park Golf Club in Swansea. I then spent a couple of years at nearby Clyne GC before returning to Fairwood Park."

Neil describes his current game as "average, but

Continued on page 6...



THE NEW 3 IN 1 GRADEALL BEAVER



- A new concept in greenkeeping, designed for **maximum mobility** the GradeAll Beaver combines blending, shredding and grading in a single unit.
- The reliable, built-in power pack provides tons of high quality top dressing with **minimum effort**.
- The Beaver performs aggressively on poor quality damp soils with stones, shrubs and sods producing a high quality loose and manageable soil. (It will turn tough, lumpy organic humus into a pure workable 100% organic compost). Cricket tables, bowling greens golf greens and fairways — indeed any turf area will benefit from the Beaver's unique capabilities.

GRADEALL INTERNATIONAL LTD.
 9 Farlough Road,
 Dungannon,
 County Tyrone,
 Northern Ireland
 BT7 4DT
 Telephone (08687) 40484.

Applications include:

Car Parks, Caravan Sites, Golf Courses and other leisure complexes, Footpaths, Picnic Areas, Country Parks, Emergency service access lanes.



Caravan Sites

Geoblock gives the ultimate pitch – grass which doesn't wear.

Country Parks and Picnic Areas

Where there is heavy use maintenance costs are cut to the minimum. Reseeding and returfing is needed much less frequently and appearance is maintained.

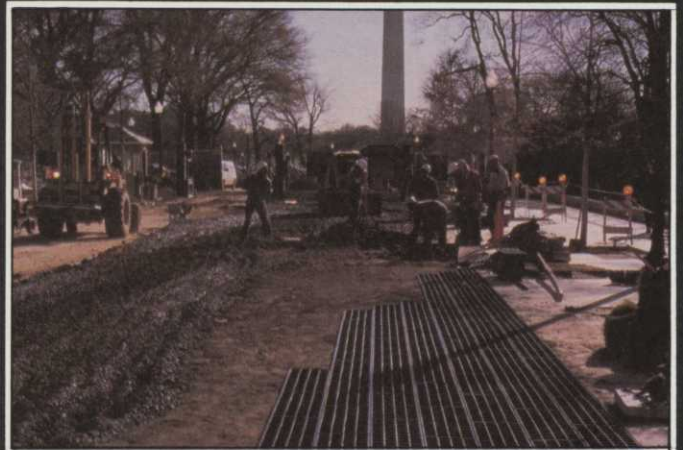
Golf Courses

Protect those areas where wear is heaviest.



Car Parks

If hard surfaces are used the area can become visually at odds with the surrounding area. Geoblock gives a natural appearance – a major benefit in national parks and on sites where visual compatibility with the surroundings is important.



SPECIFICATIONS

HEAVY DUTY GEOBLOCK

Size 925mm x 325mm x 50mm
No. of blocks per pallet – 72.
Square metres per pallet – 21.6
Average weight per pallet – 468kgs

LIGHT DUTY GEOBLOCK

Size 925mm x 325mm x 29mm
No. of blocks per pallet – 120
Square metres per pallet – 36
Average weight per pallet – 408kgs

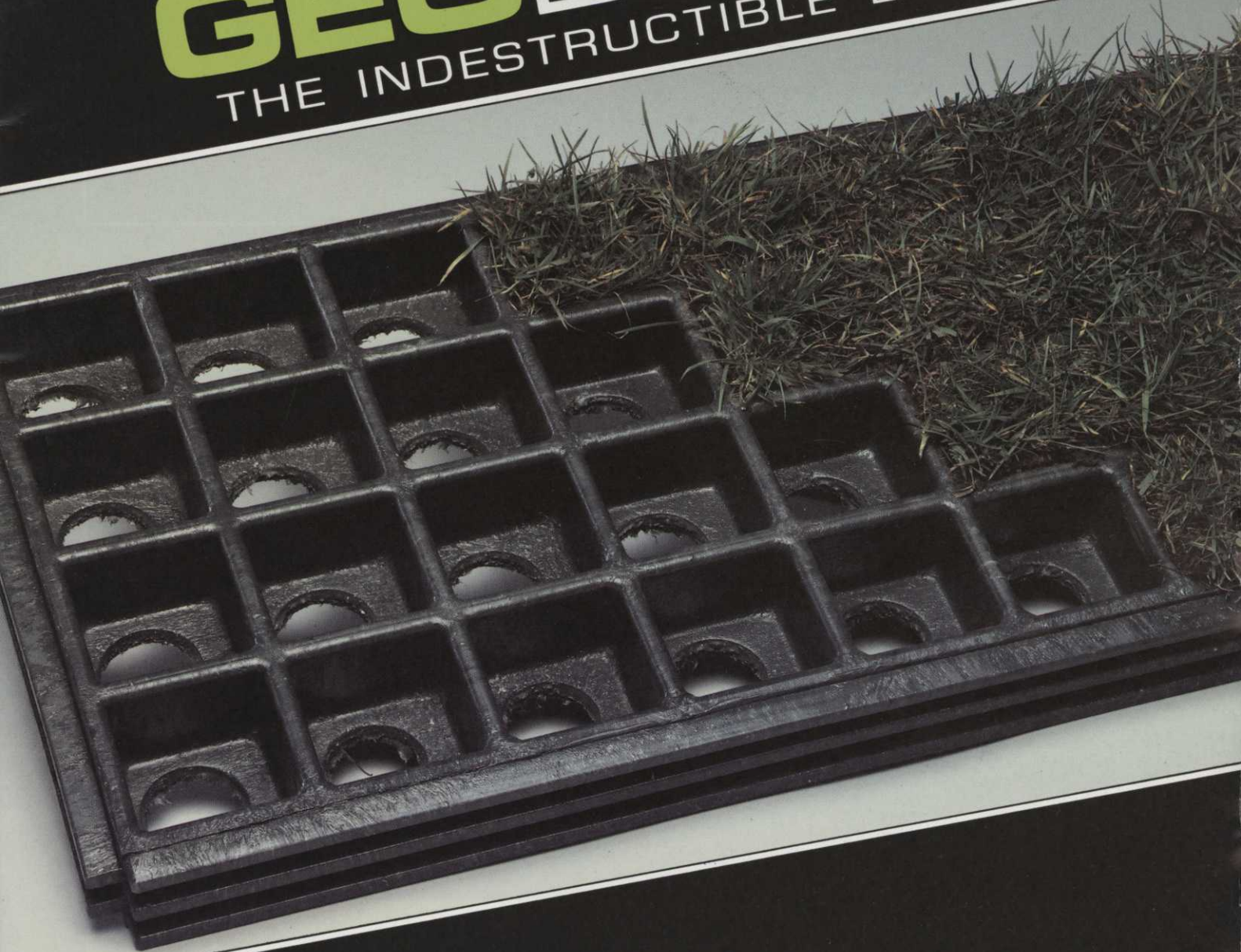
GEOPLAS LTD

HEANOR GATE INDUSTRIAL ESTATE, HEANOR, DERBYSHIRE DE7 7RG
TEL: 0773 530530 TELEX: 377163 ALIDA G. FACSIMILE 0773 530025

A member company of Alida Holdings plc.

GEOBLOCK

THE INDESTRUCTIBLE LAWN



Geoblock system is made up of moulded high strength, low weight, low density polyethylene (LDPE) blocks which will support pedestrian and vehicle traffic, while maintaining a thick cover of grass. Features of the system are:

- Strong interlocking tongue and grooved edges which distributes the traffic load over a wide area.
- Easily installed light weight blocks which can be cut with a hand or power saw to fit contours or obstructions.
- Resistance to chemicals, fertilisers and temperature extremes.
- Availability in two sizes, 50mm depth for heavy duty use, 30mm for light duty use.

Grassed areas with heavy use tend to become compacted and good quality grass cover is difficult to maintain. Wear and compaction in such areas can be minimised by using Geoblock. The blocks provide the load bearing element so that the grass can grow normally without continually being worn away by the traffic. The root system is protected.

Geoblock offers an attractive and effective alternative to hard surfaces particularly in environmentally sensitive areas. When the grass has become fully established the visibility of the block is minimal.

GEOPLAS

Geoplas Ltd
Heanor Gate
Heanor
Derbyshire
DE7 7RG

Telephone: (0773) 530530
Telex: 377163 ALIDA G
Facsimile: (0773) 530025

Date as Postmark

GEOBLOCK - THE INDESTRUCTIBLE LAWN KEEPS THE COURSE LOOKING GOOD

Dear Greenkeeper

The Golf Course is a place for relaxation and an increasing number of people are playing the game. It is also part of the natural environment which under heavy use can very easily show signs of unsightly wear and tear.

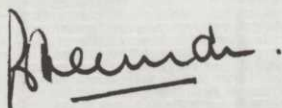
Under many pairs of feet grass becomes compacted and dies leaving bare patches which damage the overall attractive appearance of the course.

GEOBLOCK is the answer to the problem. The moulded plastic block absorbs the loads, protects the root system and enables the grass to grow normally. Once established it is unobtrusive and the grass can be mown in the normal way.

So, if you have paths, car parks, verges or other grassy areas that are showing signs of wear and tear consider GEOBLOCK.

Complete the reply paid card and return it to us and we will make contact with you to discuss the product in more detail

Yours sincerely



P J Freeman
SALES DIRECTOR

Enc

Please send details as ticked boxes

Lib. serv. Annual Disc.

Inst. Order

Name _____

Address _____

Telephone _____



If you're looking for the best value it can only be **TORO** ... we may not be the lowest price but in the long run **TORO** are by far the finest economical and efficient **TURF MANAGEMENT EQUIPMENT**.

To prove the point why not have a demonstration working under your own conditions ... you'll soon see what we mean particularly if you have other equipment to compare.



Quality Performance Reliability

most manufacturers say it

we mean it!

Please send details as ticked box/s

Literature Nearest Dealer
Trial/Demo

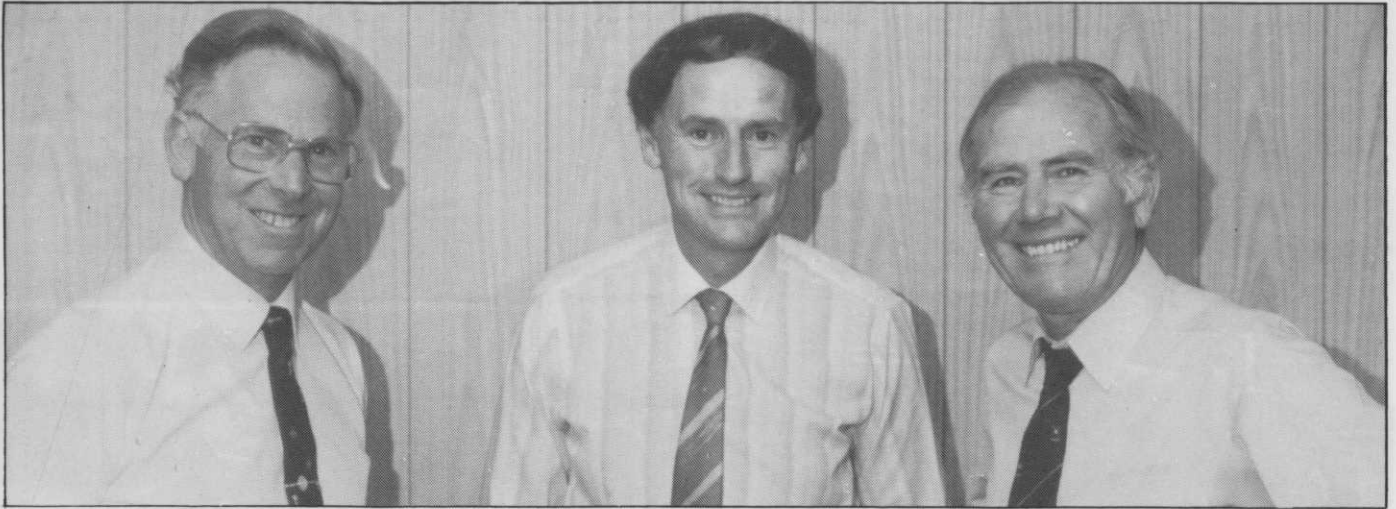
Name

Address

Telephone

G/7/87

LELY (UK) LTD Station Road, St Neots, Huntingdon, Cambs PE19 1QH Tel (0480) 76971 Telex: 32523



Neil Thomas is flanked by Peter Wilson (left) and Walter Woods.

in dire need of more practice!"

"I am very excited by the job that awaits me and look forward, through the board of management, to organising the association's affairs. It's my aim to establish BIGGA as a major force in the game and, to this end, I am ready to listen and learn. I feel it is of paramount importance that the membership makes its views known - the association is there for the members' benefit.

"At present, course managers and greenkeepers generally have a low profile. A unified association will be able to project a far more positive image of the profession, nationally as well as internationally.

"Our public and press relations will be tightened up and I aim to get around the regions to meet the

members as soon as possible, although I would ask for patience in the early stages! There is much to be done and a secretariat to be established at Bingley.

"I was very impressed by the way board of management members, all working course managers, sacrificed their time to establish BIGGA and the contribution by the two R&A trustees, Peter Wilson and Roger Robinson, was invaluable.

"There's no reason why the association cannot become pre-eminent within golf. The board and I will set about achieving this and it is my fervent hope that we will receive the backing and active participation of every member, enabling BIGGA to become established and then move forward."

BRITISH and INTERNATIONAL GOLF GREENKEEPERS' ASSOCIATION

APPLICATION FOR MEMBERSHIP

Greenkeeping member

Name in full Club

Position

Trade or Associate member

Name in full Company

Position

Preferred mailing address

I attach my cheque for £15 (plus VAT) = £17.25 Signed.....

Return to: The Executive Director, BIGGA, Sports Turf Research Institute, Bingley, W. Yorkshire.

Watermation

FOR GOLF COURSE IRRIGATION

Rainbird sprinklers are made in California, so are Toro, so are Buckner. Weathermatic sprinklers are made in Texas, Perrot sprinklers are made in Germany and Roland are made in France... but

Watermation Sprinklers are made in Britain

Along with their unique TW1 and TW2 computer controllers and other specialist equipment, Watermation have now designed and built their own GN range of sprinklers. Apart from keeping their own people in work, there are other advantages to buying British. The prices won't be subject to increase with the dollar, deutschmark or franc and there are always spare parts quickly available.

We don't expect you to buy Watermation sprinklers just to be patriotic. They are high quality sprinklers made from brass, bronze and stainless steel in a heavy cast corrosion resistant body. The internal mechanism has a multi fit guide plate so that it can be used to refurbish the Rainbird 21-47 range or the Weathermatic K range — thus saving money.

All the GN sprinklers have thick moulded green rubber tops and have been specially designed for golf course irrigation — the GN1 for tees, the part circle GN2 for the greens and the long range full circle GN3 for fairways.



BUY BRITISH — BUY WATERMATION — BUY THE BEST

Watermation Ltd., Monument Way E., Woking, Surrey GU21 5LY.
Tel: Woking (04862) 70303 & Stirling (0786) 70252.

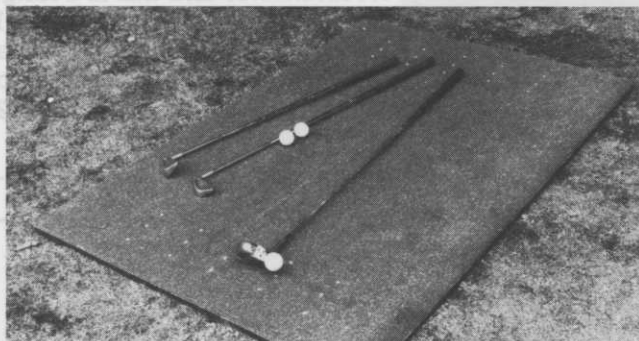
CARPETITION

LTD.

THE 'TUFTURF' TEE MAT —

Like a piece of firm, well sprung fairway

FOR TEE SHOTS



AND FAIRWAY SHOTS



"A British made porous hardwearing all weather tee 1.5m x 1m and 2m x 1m. Synthetic grass, bonded to reconstituted rubber underlay shock pad with 60 tee inserts, combine to give a superb playing surface. Its use is highly beneficial as a WINTER TEE, or when re-turfing tees in the playing season. Also ideal for DRIVING RANGES and PRACTICE GROUNDS both indoor and outdoor."
Further details from:-

CARPETITION LTD.,
6 KAFFIR ROAD, EDGERTON,
HUDDERSFIELD HD2 2AN.
Tel: 0484-28777

SIMON TAYLOR, 22, joined the greens staff at the RAF Germany Golf Club, Bruggen in June 1985, originally to earn some money before returning to university.

However, when September came, he decided not to return to his studies and the club kept him on.

"I have played golf since I was eleven, but had never considered how enjoyable and rewarding working on a golf course could be. Being a golfer means I can appreciate why each job has to be performed in a certain way and what results are expected."

The course at Bruggen has 18 holes, with an SSS of 71, measuring 6,522 yards off the back tees.

Greenkeeping can be a 'boaring' chore!

Simon Taylor works at RAF Bruggen in West Germany where he has to contend with some unusual damage to the course within the station's grounds...

There are three members of the greens staff and an extra worker in the summer. The course is heavily wooded, which means there is plenty to do during the winter when the weather prevents other jobs being undertaken.

"Removing dead and misshapen trees improves the appearance of the course and speeds up playing time. It also makes it easier for the sun and the wind to get through to wet areas. I find tree work in the winter healthy and enjoyable and a welcome change from painting tee markers and flagsticks.

"But the major problem we have at Bruggen is damage to the course by wild boars. This problem occurs most years and it is a long and laborious task levelling out soil and replacing turf so that the ground can recover. Special lamps, smelling deterrents and even gas-guns have little success in keeping the boars away and it is very frustrating to spend all day repairing a damaged area of fairway only to find it ripped up again the next day.

"In 1986, eight fairways were quite extensively damaged and repair work went on until May. Naturally, this meant that basic course maintenance suffered and, to some extent, our summer programme depends on just how much boar damage we experience in spring.

"Permission to shoot the boars has to be given by the German forest master and this is a lengthy process which, in any case, has little overall effect, as the damage has been done by the time per-

Continued on page 21...



Simon Taylor - exasperated by the boar damage to his 16th fairway.

*We've built more courses than everyone else put together...
for new constructions, alterations or improvements on your course...*

GOLF LANDSCAPES LTD.

ASHWELLS ROAD
BENTLEY, BRENTWOOD
ESSEX: CM15 9SR

Telephone: (0277) 73720
Telex: 995215 GOLF LG



*The proven experience in the field
for construction, drainage and irrigation*

BLACK FEN TOPSOIL

Tel: G. J. Moyses
(0733) 69447

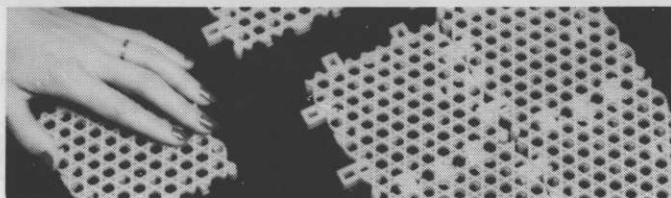
HEAD GREENKEEPERS CLUB SECRETARIES GREENS CHAIRMEN

Are you looking for
greenkeeping staff?

To place an advertisement
in the Appointments pages of

GREENKEEPER

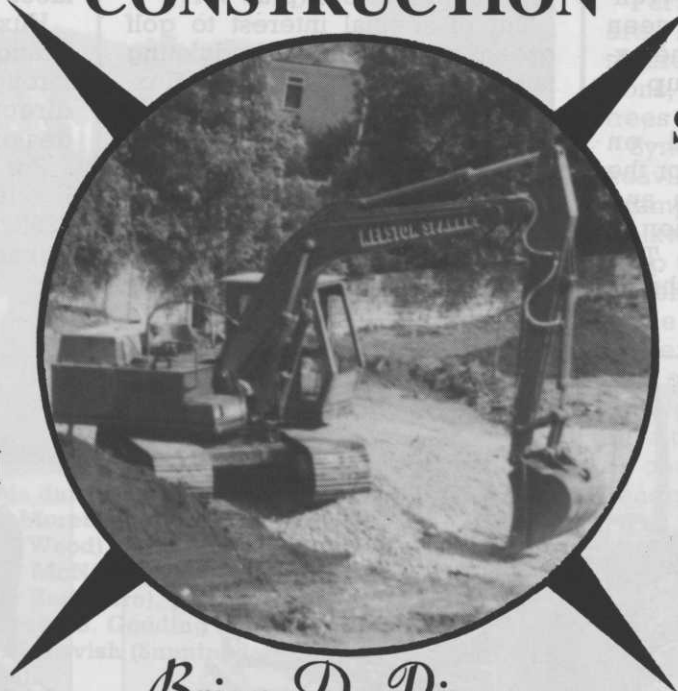
PHONE LINDA BAKER
ON 0255 507526



NO DIVOT FILLING
INSTALLATION ON TURF OR SEED
ALL YEAR PLAYING
LESS MAINTENANCE
LIGHTWEIGHT AND TOUGH
CAN BE ROLLED UP
PROTECTS GRASS ROOTS
NO MUDDY PATCHES
EXCELLENT GRIP FOR PLAYERS

TECNOTILE 64 OAKHURST GROVE LONDON SE22 9AQ 01-693 6287

COURSES CURRENTLY UNDER CONSTRUCTION



**ST. ANDREWS
(JUBILEE)**

PUTTENHAM

**BARNHAM
BROOM**

Brian D. Pierson
(Contractors) Limited

Homestead Farm, Ringwood Road, Three Legged Cross, Wimborne, Dorset. BH21 6QY
Telephone: Verwood 822372 & 824906 (STD 0202)

MACHINERY REVIEW...

Stately Setting For Professional Grass And Turf Equipment Show



The splendid backdrop of Stratfield Saye House, with its 30 acres of landscaped grounds, provided the perfect setting for a demonstration of three new items of professional grass and turf maintenance equipment from Huxleys Grass Machinery.

The company's full range of equipment, which includes the Cushman, Huxley, Royer, Little David, Red Rider and Yankee product names, as well as the latest introductions, were shown as part of a three-day exhibition.

Staged at the country estate of the Duke and Duchess of Wellington, situated midway between Reading and Basingstoke, the exhibition attracted one group of visitors from Madrid.

Their interest centred on Huxley-made attachments for the Cushman turf care system and particularly the latest addition to the range - the H44 Fine Turf Scarifier for use with Cushman Turf Truckster vehicles.

Of identical working width, and operating details, the Huxley TV36 Fine Turf Scarifier has been produced by the company for use with the smaller compact tractors in the 14 to 18hp range. The Huxley H44 and TV36 Fine Turf Scarifiers both cost £1,335 (plus VAT).

The second machine making its first major public working appearance at Huxley's Stratfield Saye exhibition was the latest Cushman Front Line ride-on rotary mower with its three-cylinder, 21.5hp diesel-engine, priced from £9,830 (plus VAT).

But of special interest to golf greenkeepers, with undulating fairways to maintain, was the Huxley TR138 Golf Course five-gang hydraulic reel mower, with its new floating top link and rear castor wheel options.

Although providing all the transport and manoeuvrability benefits of a fully tractor-mounted machine, these two optional

Pictures show the 3.5m (11ft 6in) cut Huxley TR138 Golf Course mower.



items give the mower the characteristics of a trailed unit in work, allowing the frame to follow ground contours independently of the tractor.

The Huxley TR138 Golf Course mower has twinroll floating head cutting units as standard and is equipped with seven-knife reels for a precision finish.

In standard form, this 11ft 6in (3.5m) cut mower, which requires tractors developing a minimum of just 25hp, costs £6,700 (plus VAT). The floating top link and castor wheel options for undulating surfaces add £125 (plus VAT).

Huxleys can arrange demonstrations of any item of equipment throughout the country, either direct or through appointed dealers.

For more details, contact Paul Huxley on Alresford (0962) 733222, or Barry Huxley on Egham (0784) 38666.

