

Wider Application For The Verti-Drain

Over the last three years, a new dimension has been added to turf culture by the introduction of the Verti-Drain, which not only aerates to the previously unheard depth of 16in, but also heaves the ground in the process, thus smashing any pan and relieving compaction.

The original mounted Verti-Drain requires a power unit of approximately 80hp, limiting its use to contractors, a few golf clubs and local authorities, many of which have purchased tractors specifically for use with the machine.

However, Charterhouse Turf Machinery has announced a new towed Verti-Drain, which requires approximately half the previous hp without compromising on the standard or quality of job performed. This reduced hp requirement will enable the Verti-Drain to be used in conjunction with tractors in golf course and local authority fleets.

"Now, the benefits of Verti-Draining can be bought into the range of the average budget," David Jenkins,



Anyway you view it, the Verti-Drain is very effective...

managing director of Charterhouse Turf Machinery, said. David is pleased with sales to date and looks forward to increased awareness of the new towed machine, which costs about £10,500.

Greenkeeper contributing editor John Campbell said: "I think we will

eventually find more and more golf courses having a Verti-Drain as part of their range of equipment for use on a regular basis."

Full details from Charterhouse Turf Machinery, Pink's Yard, Church Road, Milford, Surrey, GU8 5JD. ☎ 048 68 24411 and 21040.

Show's Screen Success

The first showing of a video filmed at last year's IOG international exhibition at the Royal Windsor Racecourse took place at the British Academy of Film and Television Arts in Piccadilly, London recently. Such was the success of the presentation that it was screened 60 times.

Some 250 exhibitors have already booked stands for this year's exhibition (from September 17-19) and exhibition organiser Dai Rees warned: "Many regular exhibitors are extending their stand sizes. Those who have not yet booked, should do so quickly or they are going to be disappointed." So far, enquiries have been received from the Soviet Union, Malawi, France, Fiji and West Germany.

The video is available on payment of a returnable £10 deposit or it can be bought for £18.50 (plus VAT), including post and packing.

Write to the Exhibition Organiser, IOG, The Pavilion, Woughton-on-the-Green, Milton Keynes, Buckinghamshire MK6 3EA. Please state VHS or Beta.

Diesel Engine Option

Saxon Industries now offers a Robin 348cc direct injection diesel engine as an alternative to the Robin EY35B petrol engine.

It is claimed the diesel engine is more economical on fuel, giving a 50

per cent reduction in consumption over petrol. An automatic decompression ensures quick starting by means of a starting handle. Lubrication is by a mechanical pump, incorporating a filter system.

For further details, contact Saxon Industries, Lower Everlands Road, Hungerford, Berkshire. ☎ 0488 82655.



Choose your fuel for this Saxon machine.

IT'S ON THE GREEN ...WHERE IT COUNTS!

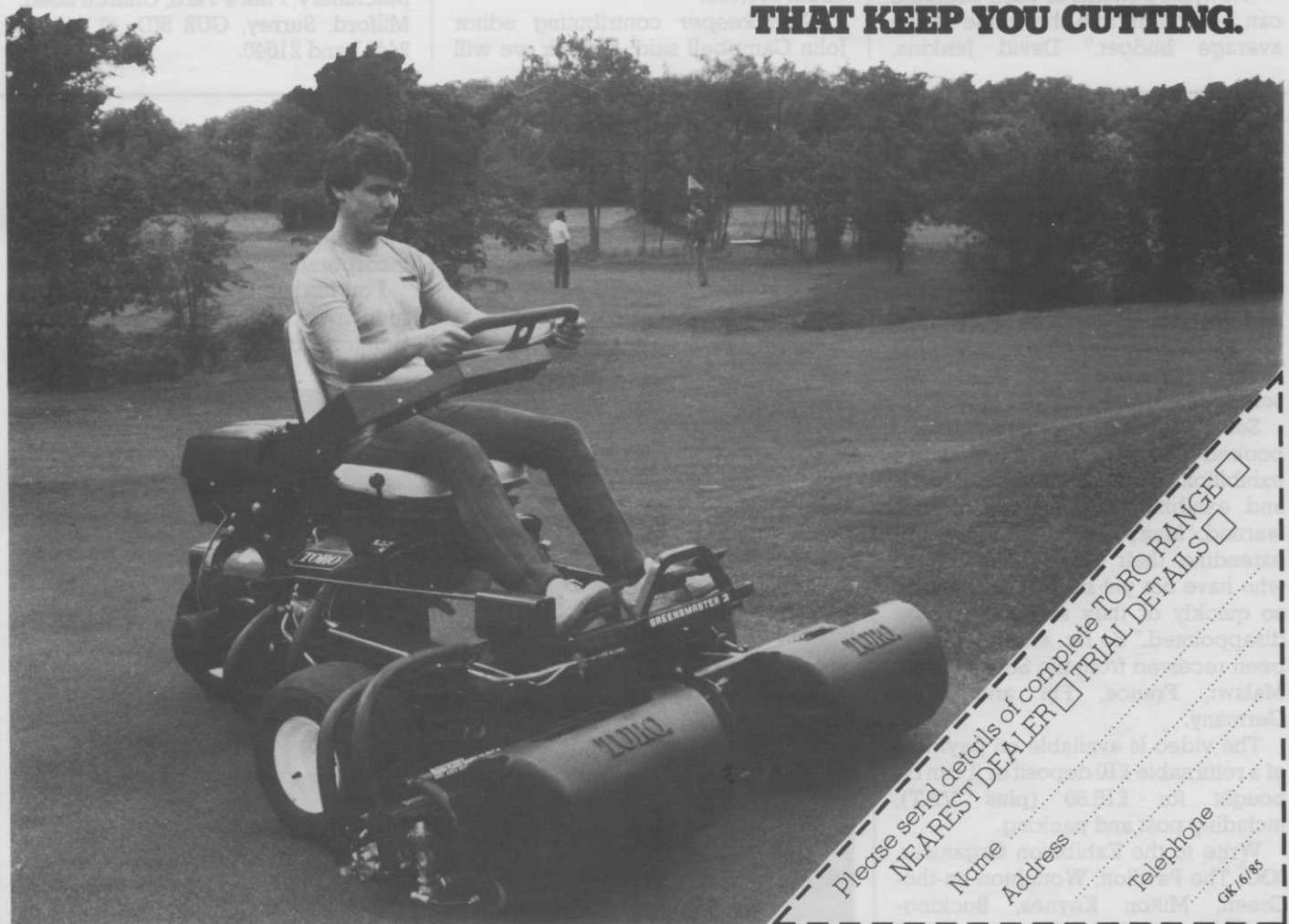


... of all the mowing jobs on a golf course, mowing the greens requires the most delicate touch of all. The new GREENSMaster 300 ensures a uniform cutting height, appearance and playing characteristic while manoeuvring in a tightly defined area. Why not see this exceptional mower in action ... the GREENSMaster 300 has so much more to offer!

NEW GREENSMaster 300



**THE PROFESSIONALS
THAT KEEP YOU CUTTING.**



Please send details of complete TORO RANGE
 NEAREST DEALER TRIAL DETAILS
 Name
 Address
 Telephone

GK/6/85

UK DISTRIBUTORS: LELY IMPORT LIMITED STATION ROAD / ST NEOTS / CAMBRIDGESHIRE Tel (0480) 76971 Telex 32523

People, Places, Products

Maxwell Hart has added Edward Hadgkiss to its sales team. He will cover the Hereford, Worcester and Lincolnshire area, handling the company's full product range.

Eddie, 30, was previously head greenkeeper at Stoke Poges and Wrekin Golf Clubs and is a member of EIGGA and the BGGGA.

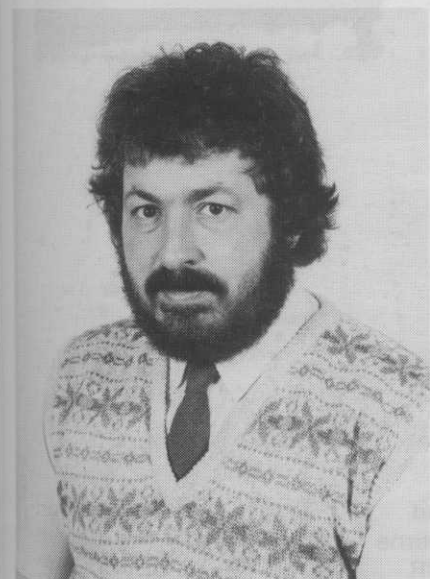
Married with two children, Eddie lives in Shipston-On-Stour, Warwickshire and he can be contacted on 0608 61300 or through Maxwell Hart's sales office in Wokingham on 0734 785655.

After moves initiated from Riverside, California and the recent resignation of Philip York, Toro has announced personnel changes within its sports turf irrigation division located at Ringwood, Hampshire.

Peter Roberts has been appointed manager of Toro Irrigation, the subsidiary company responsible for all irrigation product sales in the UK and Eire. He also becomes area manager for the Toro International sales company's interests in northern Europe.

Peter has been with Toro for nine years, operating mainly within the UK golf markets.

Based at Ringwood, Richard Parsons becomes specifier sales manager for Europe, the Middle East and Africa with special responsibilities for Scandinavia. Mark Gunter has been appointed service manager for Europe, the Middle East and Africa. The revised operation is headed-up by Carlos Ochoa, managing director of sales, Europe, the Middle East and Africa.



Peter Roberts.



Pictured seated on a Ransomes triple greens mower is Donald Steel, who was elected chairman of the projected European Association of Golf Course Architects at the 13th AGM of the British Association of Golf Course Architects held at Ransomes recently. The past chairman of the BAGCA Don Harradine (third from right) was elected president and Dr Martin Hawtree (far left) secretary and treasurer.

George Palmer, the Peterborough-based fertiliser and feed-stuffs manufacturer, after a year in which demand for its organic-based fertilisers and protein feeds increased by over 30 per cent, has announced the first part of a three-phase capital investment programme of £300,000 for additional plant and storage.

Fisons Horticulture will be sponsoring two bowling leagues this summer—the South West Bowls League in Bristol and the Birmingham Bowling Association League.

The South West Bowls League is one of the largest in the country, with 27 private and municipal clubs competing in the two divisions. The Birmingham Bowling Association comprises 13 clubs, again drawn from private and public authority greens.

A fundamental feature of sponsorship, which is being operated jointly with Fisons stockists Brown & Sons Seeds in Bristol and E.T. Breakwell in Solihull, is that the clubs involved will be able to benefit from Fisons professional advice on greens maintenance throughout the season.

Nigel Woodland, sales and marketing manager for Fisons Professional Horticulture, said: "We are delighted to give this support and feel that our association with these two leagues will make a positive

contribution to the sport in terms of green maintenance and improvement."

• *Fisons Horticulture has published five new product booklets—the first in a series the company aims to produce, ultimately covering the full professional horticultural range of composts, fertilisers and pesticides for the greenkeeper/groundsman, commercial grower and landscaper.*

The titles are: *Turf Chemicals (covering selective weed control, systemic disease control and effective worm cast control), TPMC tree and shrub planting compost (specially formulated for the improved establishment of newly planted trees and shrubs and a selected blend of peats with a complete range of nutrients), Grower Pesticides (fungicides, herbicides and insecticides), Cudgel (the new microencapsulated insecticide for the effective control of vine weevil, sciarid fly and cabbage root fly) and, finally, Levington And Fenmere Composts.*

Copies are available from Fisons Horticulture, Horticulture Division, Paper Mill Lane, Bramford, Ipswich, Suffolk IP8 4BZ. ☎ Ipswich (0473) 830492.

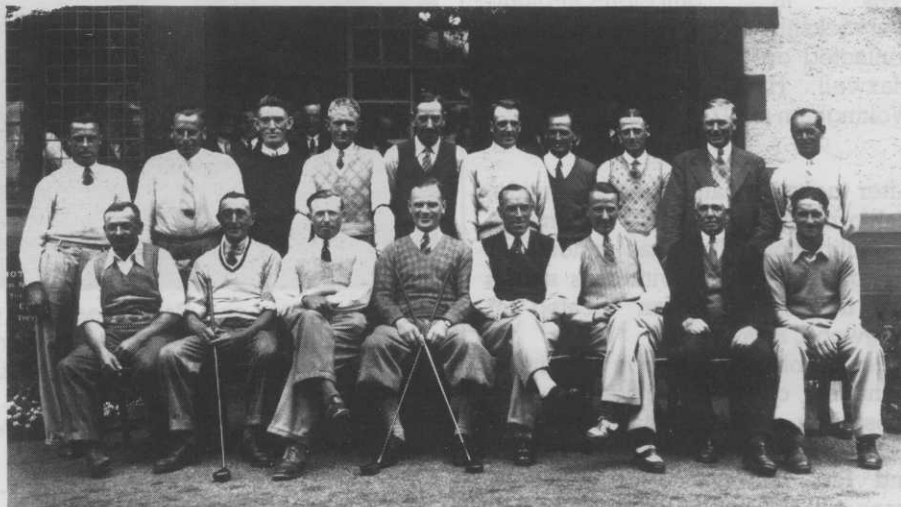
**Continued
overleaf...**

Compo, a subsidiary of BASF and a leader in the continental amenity turf market, is bringing its range of slow-release nitrogen products to the UK market. BASF United Kingdom has appointed George Palmer as its sole UK wholesale distributor and the range, which initially includes nitrogen, NPK and NK products sold under the Floranid name, will be handled by Palmer's horticultural and amenity division, which will be appointing retail distributors. Further details from John Hinton, BASF United Kingdom on 0473 822531 or Jim Green of George Palmer on 0733 61222.

Orag, the authorised European agency for the distribution of Ryan equipment, has appointed Victa (UK) as UK distributor. John Edmunds, managing director of Victa (UK), said: "The Ryan equipment is among the finest available for turf maintenance and, as such, requires a trade commitment and after-sales back-up in line with its quality. As these conditions are similar to those enjoyed by the Victa range, the Ryan programme will form a logical and exciting development for our UK operation." For further information, contact John Edmunds on 0256 50301.

Team Group Identified

On *Greenkeeper's Notebook* pages in March, this photo of greenkeepers, taken prior to an England-Scotland match at Barnton in the mid-1930s, was published. At the time, no details of the personnel were available. Well, now the picture is a little clearer, thanks to several readers contacting the editor. The known line-up, thus far, reads (back row, left to right): not known, Jack Glass (vice-chairman), Ben Ellis, not known, Charlie Prickett, not known, George Hart, Bert Dash, Alf Whitall (chairman) and Jimmy Ness. Front: Ted Dunn, Arthur Tydeman, Stan Morton, George Martin, Bill McKean, Jim Bridges, Charlie Saunders and not known.



VERTI-DRAIN FOR HIRE

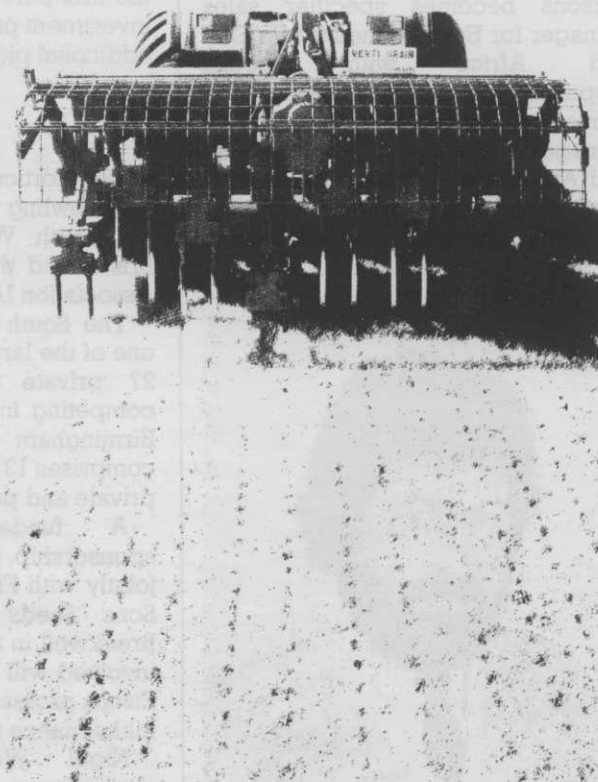
Clubs we have Verti-Drained:

Royal St. Georges
Wentworth
Meon Valley
Berkshire
Alresford
Broome Manor
Bramshaw
Broadstone
Bognor Regis
Beechlands
Burnham Beeches

Corhampton
Hankley
Hayling Island
Lyme Regis
Parkstone
Sherborne
Temple
Tilney Park
West Surrey
Woking
Knighton Heath

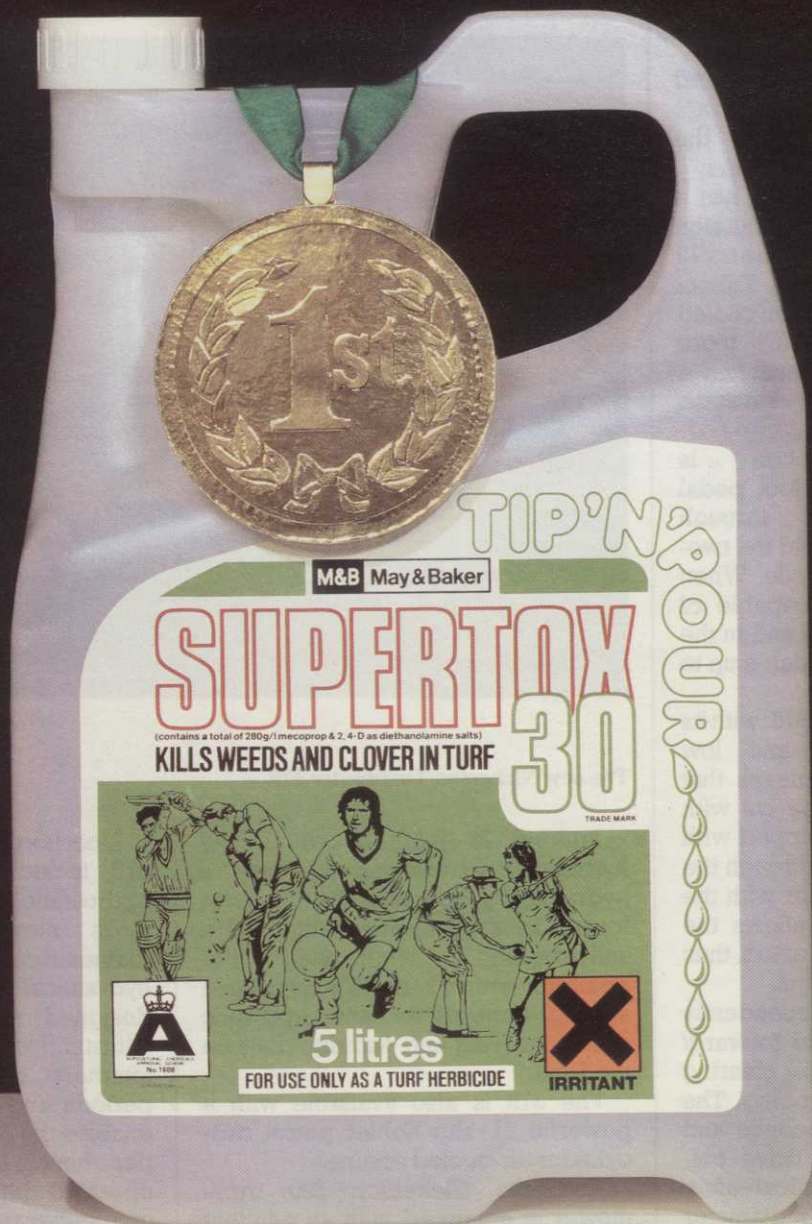
Brian D. Pierson
(Contractors) Limited

AERATE YOUR GREENS OR PITCH
THE DEEPEST PENETRATION



27 Vicarage Road
Verwood, Wimborne
Dorset BH21 6DR

Tel: Verwood
822372 & 824906
(STD 0202)



BEATS THE COMPETITION

Supertox 30 has all it takes to be a winner at weed control.

Broad-spectrum cover to beat weed competition, with over 22 species controlled including chickweed, yarrow, pearlwort, creeping buttercup, daisy, dandelion and clovers.

Economy of treatment that exactly matches the dose rate to the need.

Turf tolerance record excellent at all recommended dose rates.

Complete flexibility from routine jobs to really difficult control problems. Now in the unique 5 litre Tip 'n' Pour pack and 25 litre drums.

M&B May & Baker

New Pair From Nickerson

Nickerson Turfmaster has developed a new range of sophisticated grass cutting machinery to meet the requirements of professional users.

Nickerson Turfmaster's 375 has a full 7ft cut, hydrostatic transmission plus a host of other features. The triple mower is powered by a Kubota 21½hp, three-cylinder, water-cooled diesel engine, giving the 375 more than adequate power to maintain a high work rate and fast transport speed.

Forward/reverse motion is controlled by a rocking foot pedal giving variable speed through hydrostatic transmission and the two-speed, front-wheel drive axle. When cutting, the machine is capable of operating at up to 7½mph and in the transport gear speed is variable up to 14½mph.

The configuration of the 375, with its low centre of gravity and low pressure flotation tyres, means that slopes of up to 30° can be cut with ease. The machine is equipped with hydraulic power steering through the rear wheels which, together with the hydrostatic transmission, allows the 375 to be used in awkward areas, thus reducing hand-trimming time.

Each cutting unit is independently hydraulically operated and forward/reverse drive allows for the clearing of blockages and back-lapping. The units can be raised in seconds and have automatic cylinder drive cut-off—they also have mechanical safety locks for transport. The 8in diameter cylinders are available with three or five blades and can deal with grass up to 8in high—height of cut is easily adjusted from a ½in to 2½in.



The new Nickerson Turfmaster 375.

Braking is inherent within the hydrostatic transmission, but a hydraulically operated 8in diameter foot brake is also fitted together with a self-adjusting handbrake. For operator comfort, there's adjustable seating, controls to hand, hydraulic power steering and warning dials on the fascia.

The 375 is also available with a powerful 21½hp Kohler petrol two-cylinder air-cooled engine.

And the Nickerson 390 triple mower is equipped with an efficient Kubota 28½hp, four-cylinder, water-cooled diesel engine for fuel economy and trouble-free running over extended periods.

Incorporating all the features of the 375, including power steering and hydrostatic transmission, the 390's three mowing units have 10in diameter cutting cylinders, which are hydraulically powered. The specially designed robust cutting units will withstand constant hard work in the toughest of conditions for long periods and the 100in width of cut enables the 390 to cut up to 7½ acres per hour. Like the 375, a heel-operated differential lock is fitted to give better traction should wheel slip occur.

All Nickerson Turfmaster machines carry a two-year warranty. ☎ 0427 4776.

MELTON MOWBRAY GOLF CLUB

invite applications for the post of

HEAD GREENKEEPER

Accommodation provided. Salary negotiable.
Opportunity for wife to undertake some catering.

Please apply in writing giving age, course qualifications and experience to:

Secretary, Melton Mowbray Golf Club, Thorpe
Arnold, Melton Mowbray, Leics.

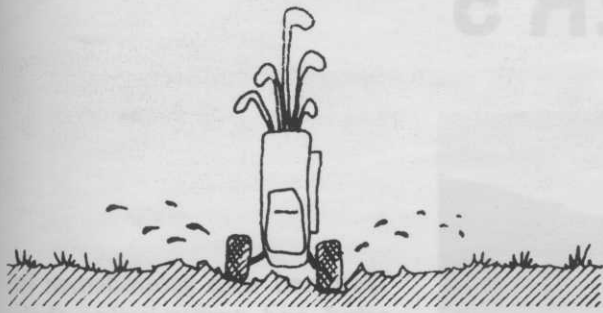
The professionals choice in Compact Tractor equipment

WESSEX

WESSEX FARM MACHINERY SALES CO.
NEWMAN LANE, ALTON, HAMPSHIRE.
TELEPHONE: ALTON 88848. TELEX: 858755.

Get On The Right Track

The problem of how to stabilise and keep clean muddy pathways in a cost-effective way has been tackled by Woodland Riding Surfaces, Warren Camp, Crowborough, East Sussex TN6 1UB. ☎ 034282 4612. On test, what was previously a bog remained a clean and



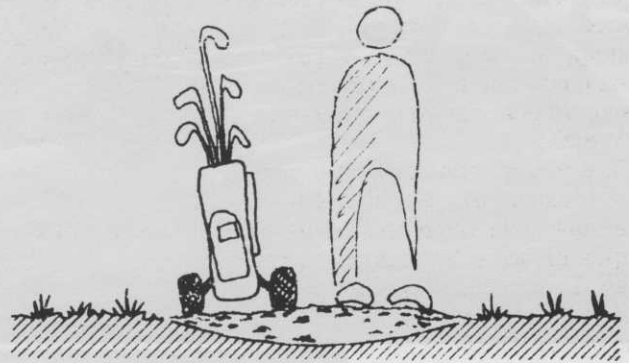
Muddy paths, dirty shoes, bogged wheels,' the members complain... Prepare a clean, hard sub-base by clearing the mud and draining puddles down to the firm subsoil.



walkable pathway throughout the winter thanks to a 3in-6in layer of the company's Woodland Pathway Surfacing. The only preparation required is the removal of excess mud and, as the material is delivered in bulk, it can be wheelbarrowed straight on to the path and takes spiked shoes and trolley wheels immediately. Decay resistant, the material will last for up to five years before topping up is necessary.



Delivery of the mixed hardwood chip/bark and twigs takes up to ten days. Rake until level a layer of Woodland Pathway Surfacing. The clean, light-coloured, natural, non-splashing, long-lasting and economical surface pleases golfers!



EDDIE PARK—CONTINUED FROM PAGE 11...

water to our natural rainfall. We now only add about 5in.

When you realise that the average rainfall for the area totals only 25in, you can see how easy it was to go over the top. We have now realised just what a skilful job watering should be. Hand watering, the use of small local sprinklers, wetting agents and moisture meters enable the skilled operative to apply just enough water to different areas of permeability at different rates and to achieve a positive effect in change of grasses. There are no more wet middles with lush meadow grass and no more dry peripheries or hard and bare slopes. As fescue and agrostis have reappeared, we can allow the top few inches to become drier and concentrate on the root growth, perhaps 6in down. Local weather forecasts and a rain gauge are other helpful aids.

I can illustrate the variations that exist in different parts of the green with some further simple observations.

Many greens on old courses were

constructed to retain water for periods of drought. An impervious layer was built in, sometimes in a saucer shape. Many of our greens had to be built up to clear the underlying rock and local clay was used. As most of the greens have returned to agrostis with fescue, we have seen two interesting features. One is the initial change back to agrostis followed by a further change in many areas to fescue. The second is the fact that we are left with a few small local areas that are different from the rest in that they have some *Poa annua* patches.

Fusarium

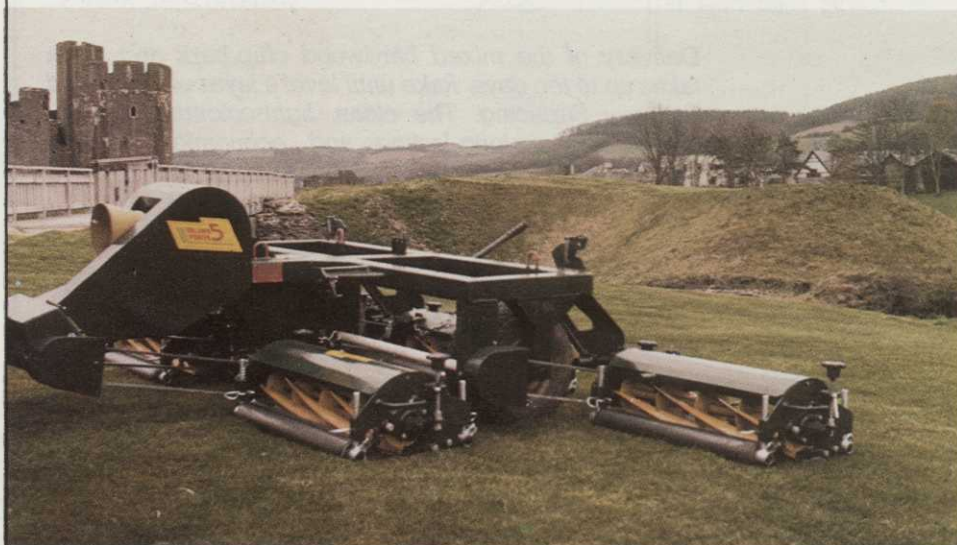
These are the only areas to be susceptible to fusarium. They are not really extensive enough to be significant, but they are irritating. There had to be some reason lying under the surface and so we tried the 'comparative cans' test. Tin cans minus tops and bottoms were inserted into a shallow slit in the turf and filled with water, with controls on the better areas. The soil should be generally

moist, but not saturated. The control cans emptied at a vastly greater rate than those in poor areas. Percolation in these difficult areas was clearly blocked. And, in fact, deep holes revealed a dense layer of impervious material.

I may have drawn the wrong conclusions from these observations. I hope someone is going to think it worth doing the research to prove me right or wrong. I would like to see irrigation companies thinking out what we require for our climate. It could be high volume, but well diffused, hand-watering devices, equipped with a flow meter so that if hand watering is required, it can be done in the shortest possible time. Quick coupling hoses are available.

There must be a commercial need for a full watering advisory service able to keep a check on our swards to tell us how much water is required, to test the permeability, compaction, moisture holding capacity and, no doubt, many other things. For some courses, its arrival cannot come soon enough.

CUT INTO YOUR WORKLOAD WITH THE VERSATILE POWER 5



Designed with groundsmen in mind and now winning their acclaim for its sharp, clean, close cutting ability.

Five fully floating heads follow the ground contours and cut without scalping.

The hydraulically raised '3/5' can be used either as a full '5 gang' machine or as a '3 gang' with the outer '2' raised and drive automatically disconnected.



Rocraft Limited

Energlyn, Caerphilly, Glam. CF8 3TE Tel: (0222) 885778

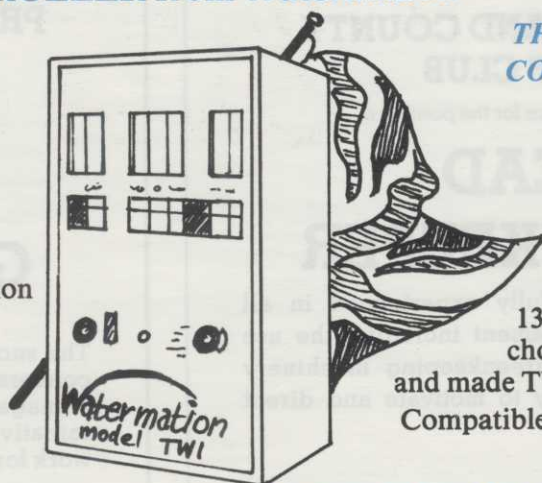
Are you still green with envy?

or are your greens under the control of the
TW1 COMPUTER CONTROLLER from **Watermation**

**THE MOST ADVANCED
CONTROL SYSTEM FOR
GOLF COURSE
IRRIGATION**

Developed by
Watermation over 5
years, the TW1 is now
available for you. Over
130 golf clubs have already
chosen this British designed
and made TW1 computer controller.
Compatible with existing equipment

- 1" high, easy to read display
- Large control buttons
- 3 alternative watering programmes
- Battery back up in case of power failure
- Simple rotary switch for easy selection of function
- Diagnostic switch allows greenkeeper to check system is working without applying water



REQUIRES TWO WIRES ONLY

Greens, tees, approaches and fairways can all be controlled by one TW1 and one pair of wires feeding up to 99 solenoid valves. In most cases, existing cabling can be used.

INSTALLATION STRAIGHTFORWARD

Installation can be carried out by your local irrigation contractor (who can also supply the unit) or by **Watermation**

FUTURE FLEXIBILITY

TW1 enables you to **ADD** areas of irrigation at any time, such as tees or approaches, without additional controllers or cables.

COMPLETELY ACCURATE TIMING

Modern computer technology gives accurate timing in 1 minute steps and allows Greenkeeper to set up to three alternative watering programmes.

Watermation Ltd., Monument Way E., Woking, Surrey. Tel.: Woking (04862) 70303

farmura

The Liquid Organic Fertiliser

Make it part of your turf management programme — from re-seeding to maintenance

farmura

benefits include

- ★ Thicker sward
- ★ Deeper roots
- ★ Improved germination
- ★ Greater resistance to stress

For detailed information, contact your distributor or

Farmura Ltd, Stone Hill, Egerton, Kent. Tel: Egerton (023376) 241

farmura

has been used on a wide variety of sites including

FOOTBALL GROUNDS — Wembley, Aston Villa, Arsenal, Coventry
GOLF COURSES — Birkdale, Lytham St. Annes, St. Andrews, Woburn
RACECOURSES — Ascot, Ayr, Chester, Uttoxeter
LAND RECLAMATION — Work in progress on NCB sites
ALSO on cricket pitches, bowling greens, tennis courts — in fact, wherever grass is sown, grown and mown

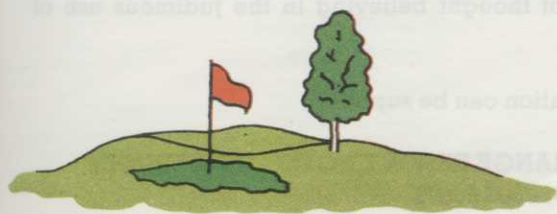


Whether it be construction, drainage or **TORO** irrigation

GOLF LANDSCAPES LTD.

ASHWELLS ROAD
BENTLEY, BRENTWOOD
ESSEX CM15 9SR.

Coxtie Green (0277) 73720



The proven experience in the field

Appointments

DUMFRIES AND COUNTY GOLF CLUB

invite applications for the position of

HEAD GREENKEEPER

Applicants must be fully experienced in all aspects of turf management including the use and maintenance of greenkeeping machinery and possess the ability to motivate and direct staff.

The salary is negotiable.

Apply in writing giving age, qualifications and full details of experience to:

**THE SECRETARY,
DUMFRIES AND COUNTY GOLF CLUB,
EDINBURGH ROAD,
DUMFRIES.**

PRESTWICK ST. CUTHBERT GOLF CLUB

invite applications for the post of

HEAD GREENKEEPER

The successful applicant will require to be fully conversant with all aspects of golf course management, be capable of working on his own initiative and have the ability to control a small work force, leading by example.

The salary is negotiable.

There is no accommodation.

Apply in the first instance to:

**THE SECRETARY
PRESTWICK ST. CUTHBERT G.C.
EAST ROAD
PRESTWICK
AYRSHIRE**



LETHAM GRANGE HOTEL

THE PREMIER RESORT CENTRE IN THE EAST OF SCOTLAND
20 BEDROOM DE LUXE HOTEL, WINTER CURLING RINK (OPENED IN 1985)

HEAD GREENKEEPER

required for

18 Hole Championship Golf Course, built in beautiful wooded parkland (to open for play during 1986), and incorporating other sports.

Applications are invited for the post of Head Greenkeeper, to take over at the completion of construction work, and maintain the golf course to a very high standard. It is important that applicants must have a desire to be an improver, and must belong to the school of thought believing in the judicious use of irrigation and fertilisers.

Salary negotiable. Family accommodation can be supplied.

Write with C. V. to:

**G. K. SMITH – MANAGING DIRECTOR, LETHAM GRANGE RESORT HOTEL, SUTTIESIDE,
FORFAR, ANGUS. TEL. NO. 0307 63671**

OR INITIALLY TELEPHONE FOR BROCHURE AND PLANS, GIVING NAME ADDRESS AND TEL. NO'S.