

Heathland— Continued...

work in this environment have a duty to conserve as much of this disappearing land as possible.

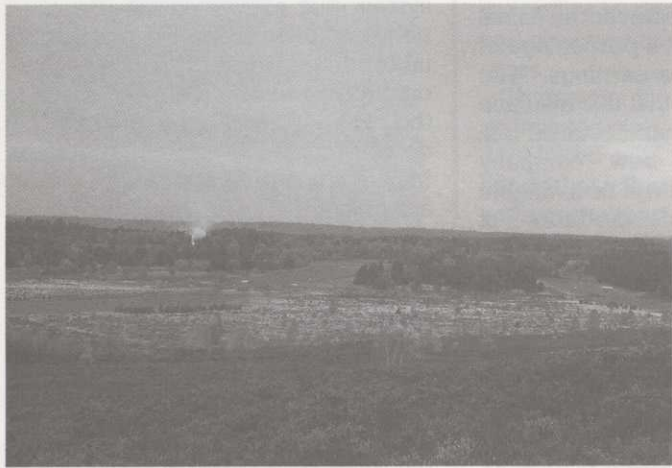
Let us not lose any more of our

heathland golf courses to trees, bracken, gorse, undesirable grasses and mismanagement due to ill-conceived ideas of what a heathland golf course should look and play like.

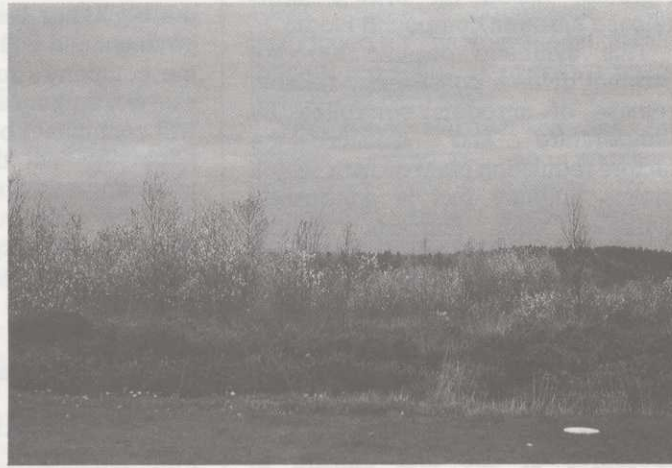
Next time you are out on a heathland course, whether working or playing, take time out to see how much of the heathland remains

according to the true definition I have described.

If you are carrying out your 'tightrope act' on a heathland course, ensure that you are maintaining your balance. I and many others would hate to see you topple and, thus, lose more of that fine inland golfing terrain laid down on the seventh day.



Open and tree-lined fairways.

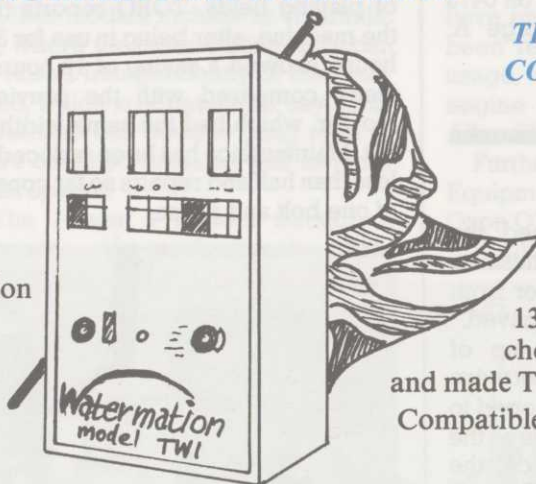


Silver birch invasion of heathland as natural succession takes over.

Are you still green with envy?

or are your greens under the control of the
TW1 COMPUTER CONTROLLER from **Watermation**

- 1" high, easy to read display
- Large control buttons
- 3 alternative watering programmes
- Battery back up in case of power failure
- Simple rotary switch for easy selection of function
- Diagnostic switch allows greenkeeper to check system is working without applying water



THE MOST ADVANCED CONTROL SYSTEM FOR GOLF COURSE IRRIGATION

Developed by
Watermation over 5 years, the TW1 is now available for you. Over 130 golf clubs have already chosen this British designed and made TW1 computer controller. Compatible with existing equipment

REQUIRES TWO WIRES ONLY

Greens, tees, approaches and fairways can all be controlled by one TW1 and one pair of wires feeding up to 99 solenoid valves. In most cases, existing cabling can be used.

INSTALLATION STRAIGHTFORWARD

Installation can be carried out by your local irrigation contractor (who can also supply the unit) or by **Watermation**

FUTURE FLEXIBILITY

TW1 enables you to ADD areas of irrigation at any time, such as tees or approaches, without additional controllers or cables.

COMPLETELY ACCURATE TIMING

Modern computer technology gives accurate timing in 1 minute steps and allows Greenkeeper to set up to three alternative watering programmes.

Watermation Ltd., Monument Way E., Woking, Surrey. Tel.: Woking (04862) 70303

New Into The Market

BASF, one of Europe's largest fertiliser and agrochemical groups, has now entered the UK amenity turf management market with a slow-release fertiliser range called Floranid, based on BASF's slow-release nitrogen compound Isodur.

This synthetic organic nitrogen product gives a consistently reliable release of nitrogen, controlled by temperature and moisture—the factors regulating plant growth, which means amenity turf is adequately supplied with nutrients without producing the flushes of growth usually associated with conventional turf fertilisers.

The result, says BASF, is even growth, improved turf recovery, increased root development and a turf surface better able to withstand the pressures of use and climate in everyday management situations.

The Floranid range contains four products with applications for use on all amenity turf areas. George A. Palmer has been appointed the sole UK wholesale distributor for these products and a list of appointed retail distributors is to be announced.

Further details can be obtained from John Hinton of BASF UK on 0473 822531 or Jim Green of George A. Palmer on 0733 61222.

The Motomop Rolls On

A British invention that eased the frustrations of sports enthusiasts world-wide by removing water from rain-soaked pitches has been saved.

Creditors at the winding up of Motomop of Ilminster, Somerset were told by the liquidator that he hoped to sell the rights to manufacture the motorised sponge roller. Since, the Motomop stock, plant and machinery, together with patents, trade marks, copyrights and US licensing agreement, has been sold to MFM of Dunstable, Beds.

A director, Mike Butterfield, a former national sales manager of Motomop, said that he and co-director Alan Smith, a turf-care expert, planned to manufacture the machine at Hednesford, Staffs. They have invited the inventor of the Motomop, Lou Weatherill, to advise on future development. "Our immediate aim is to look to the overseas market,

Europe," Butterfield said. "We have already received enquiries from Australia and New Zealand."

The Motomop will again be available for this year's PGA European Tour events and there are plans to extend its use into industrial locations.

As part of the agreement with MFM, the liquidator has received an initial payment and will get a percentage of the company's future earnings. "The sale not only means that this machine will continue to be manufactured but, hopefully, as the new company prospers, a dividend will be available for the unsecured creditors of Motomop," the liquidator said. particularly Japan and western

TORO At St Andrews

After extensive trials, TORO's Scottish dealer, A.M. Russell of Edinburgh, has announced an initial order from the curator of the University of St Andrews for the TORO 350D Reelmaster.

The TORO 350D is used at St Andrews for cutting some 120 acres of university grounds. It is also used to cut the ski-slope and finish the edges of playing fields. TORO reports that the machine, after being in use for 300 hours, showed a saving of 12 hours a week compared with the previous mower, which had the same width of cut. Maintenance has been reduced to less than half and repairs so far consist of one bolt and a fuse.

Agar Will Have You Agape!

A three-gang, linkage-mounted cylinder mower suitable for tractors of 15bhp and above is the latest from Agar Equipment.

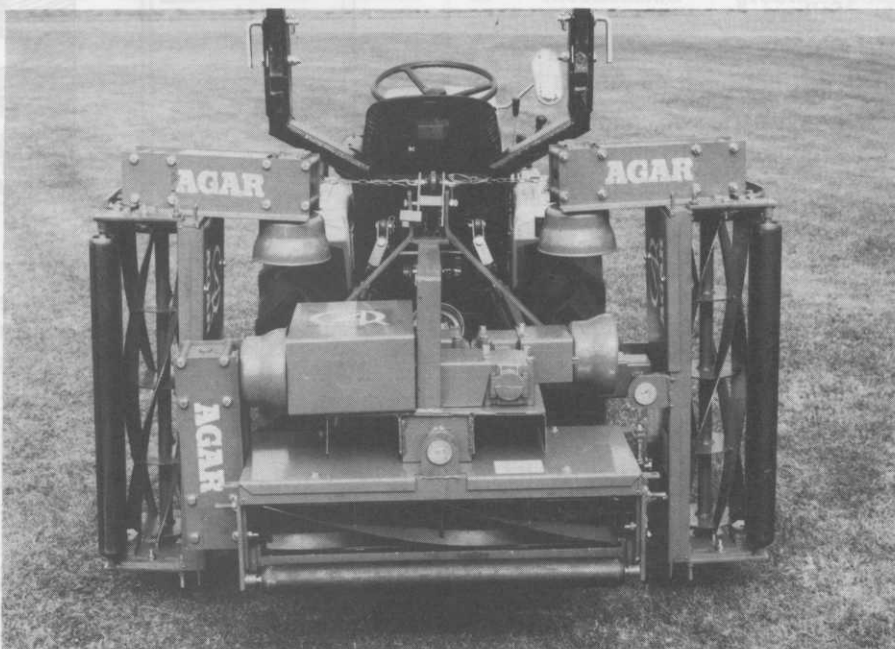
The 220 has a direct drive gearbox system that eliminates the use of all belts and chains. The drive assembly incorporates three 1³/₈in, six-spline outputs, which drive the pto shafts to the cylinder gearboxes—a sheer pin device protects each cylinder. Maintenance requirements on the 220 are claimed to be minimal and do not require skilled labour—all grease nipples are easily accessible.

Being a rear-mounted, compact machine, the 220 can be instantly detached and reattached. This is seen as a distinct advantage over mid-mounted mowers which, because detachment is troublesome, are often left fixed to the tractor for an entire season.

The three cylinders have an overall cutting width of 86in and are designed to follow ground contours closely with sufficient overlap for tight turns.

On approaching a narrow opening between trees, etc, the machine's width can be reduced by removing one or two cylinders—a simple task that takes only a minute. The main frame folds for easy transportation.

The 220 costs £3,500 (plus VAT). A full specification can be obtained from Agar Equipment, Unit F4, Blackpole Trading Estate, Worcester, Worcestershire WR3 8SG. 07095 52717.



Agar Equipment's latest cylinder mower—the 220.

An Apt Machine From AFT



The Skid-Steer Trencher.

In addition to its range of self-propelled and tractor mounted versions, A.F. Trenchers has developed a trencher attachment for Gehl Skid Steer Loaders enabling them to trench for electric cables, water pipes and all other small underground services.

Ideal for use on 45hp machines with a high capacity pump, the trencher uses a reversible hydraulic motor to drive the digging chain. Extra power for removing underground obstructions can be provided by a flywheel geared to this motor.

Called the AFT S.30, the trencher mounts easily on the lift arms of the loader and a depth control wheel enables the correct height for trenching to be maintained. Quick-snap fittings are used to connect the hydraulics. No external controls are required as the loader's normal controls are used for steering, crowd speed, depth control and to engage drive to the chain. The minimum trench width is 12.5cm—the maximum 30cm. Maximum depth is 1.20cm. A single worm auger places the soil to one side of the trench. Offset digging is provided as standard to the full width of the machine, either side of centre.

The approximate cost is £3,500 (plus VAT), according to trench specification. For further details, contact A.F. Trenchers, Gosbecks Road, Colchester, Essex CO2 9JS. ☎ 0206 44411.

Power To All Our Friends

Two years ago, the Power 5 pto driven gang mower was first launched on to the market. It's a British designed and built machine for professional grass-cutting operators needing a high work rate machine, able to stand up to heavy duties, but simple in design.

Since that time, the Power 5 has become widely accepted for its versatility in operation and transport and ability to cope with long and wet grass.

However, to fulfil the needs of greenkeepers, a machine was developed with fully floating cutting heads that follow the ground contours without scalping.

On this machine, each cutting head is fitted with front and rear rollers that support the head and govern the height of cut. Quick height adjusters enable alterations in cutting height to be made easily and without the need for spanners. The minimum height of cut is 1/2in and the maximum 3in.

To enable the Power 5 to cut longer grass, the front rollers may be quickly removed and the cutting heads locked in the fixed head position. This is done by simply turning a locking pin on each of the cutting heads.

The Power 5 is also available with hydraulic lift to the cutting heads for those operators who frequently need to fold the machine for transport.

Other models include an hydraulic 3/5, where the outer cutting units can be raised independently of the inner three, which is of benefit to, say, local authorities that need to gang mow in more confined areas as well as more open spaces.

The Power 5 is sold through a network of professional grass

machinery agents throughout the country that can offer advice and arrange demonstrations. For further information, contact Rocraft, Brynhyfyrd Industrial Estate, Energlyn, Caerphilly. ☎ 0222 885778.

More Power From Allen

Allen Power Equipment has introduced a new National triple mower, the result of over two years testing and field trials.

The Allen National 68 has 7in cutting cylinders as standard equipment and is powered by a Lombardini diesel engine with a stated fuel consumption of one gallon for eight hours running.

As with all Allen National mowers, extensive use in production is made of standard 'off the shelf' items that are designed to keep running and maintenance costs to the minimum.

And the company has also launched a new high-output 18in air cushion mower as a result of a development programme that started two years ago. Using the latest computer-aided design techniques, air flow through the machine has been increased from 700 cu ft per minute to 900 cu ft per minute.

Even though more air passes through the machine, Allen engineers have ensured that engine speed has been reduced, resulting in less fuel usage, smoother operation and less engine wear. The price of the new Allen 218 is £189.50 (plus VAT).

Further details from Allen Power Equipment, The Broadway, Didcot, Oxon OX11 8ES.

☎ Didcot 813936.



National coverage with the new 68 model.

Flying The Flag

For 21 years, Bridges Pennants has supplied a variety of golf club needs across the country from its Essex seaside base.

Arthur Elvin, the man behind the company, recalled how it all started. "I was made redundant from my previous job and began to notice how tatty some courses looked. I felt I could provide quality equipment to tidy them up and set out to do just that."

One of his first customers was Brian Huggett, then the professional at Romford. Now the company sends flags all over the UK, to the Algarve, Malta, Spain and Switzerland, as well as to most major golf tournaments. "We distribute 72,000 flags a year," Arthur added. "They last, on average, around six to eight months, but that obviously depends on the weather."

"Too much wind or sun can shorten their life, although I have known some of our flags to still be going strong after more than a year."

It is not only golf clubs that call for flags. Manchester United, Liverpool and Everton are among clubs who have availed themselves of the service, as well as many rugby clubs.

Pat Bridges, partner and flag designer, is regarded by many as one of the best flag makers in the business and she only engages top machinists.

Arthur says he carries enough stock to ensure a return of post delivery on most items. "There are 6,000 hole cups on the premises and something like £25,000 of golf flags."

A PVC flagpole was designed by Arthur and has been a top-selling line for many years. "We started producing them in fibreglass last year. These are unbreakable and have proved very popular. There are also 93 different signs we can supply—everything from 'ground under repair' to wide wheel trolleys only."

"We also have a wide selection of bag tags, tee plaques, hole borers, tee markers, rope, plastic chain, ball washers, even a putter once owned by Art Wall—you name it and it's here somewhere!"

Arthur showed with pride a letter from the governor of the Falkland Islands Sir Rex Hunt and Dennis Thatcher thanking him for a Stanley Golf Club tag.

"We were asked to re-equip the Stanley club after the end of hostilities," he said. "Our agent, Maxwell Hart, handled the most part of that transaction."

Golf course design has also



Whatever you want, Bridges Pennants can probably supply it...

featured in the company's work over the last few years. One club in particular, Ballards Gore in the Essex village of Canewdon, has often consulted Arthur for advice. He has been involved in the club since setting up the first nine holes. This year, it becomes an 18-hole layout.

Arthur, was once asked by a Kent club to provide a claxon, ship's bell

and a 78 of *God Save The Queen*. "We managed to find them. The horn and bell were wanted to signal to golfers that a couple of par threes were free to play, but I never did find out why they wanted that record..."

Full details from Bridges Pennants, 68 Southchurch Avenue, Southend-on-Sea, Essex SS1 2RR.

☎ 0702 612344.

IOG Celebrates 40 Years Success

The Institute of Groundsmanship annual international exhibition celebrates its 40th anniversary this year by mounting the biggest event ever held for the sports and leisure industry from September 17-19.

A total of over 40,000 square metres of display and demonstration space has already been booked. Only a few

units of part-covered stands remain available and a small area of open space. There are also a limited number of stands available in the new closed pavilions.

As part of the celebration, the exhibition has adopted a new logo (illustrated). This will be featured on Press advertisements and announcements, literature, entry tickets (including trade invitation cards), as well as admission passes and special lapel badges for the exhibitors and Press.



Better At The Edge

The Cherwell Edge Golf Course has completed an additional nine holes and a clubhouse, including bar and catering facilities, is now in operation.

A municipal course, it is situated four miles to the east of Banbury, Oxon. The first 100 acre site was purchased in 1973 and, subsequently, 68 acres were developed for a nine-hole course. During 1981, an offer was made to the council of a further 43 acres of land to the south. The purchase was completed in March 1982 and the balance of the original acreage sold to off-set the cost of the new land.

The original nine-holes were developed from an arable field and included a putting green and practice area. Development of the new nine holes began with earth moving equipment and a Youth Opportunities team of 12 being employed. Later, further money was set aside for specialised earth moving and drainage equipment.

From March to September 1982, approximately 70,000 cu tons of soil were moved and the soil converted into compost materials and re-sited to provide the extensive grounds that now exist.

The new greens were created in the development's first year with the exception of the sowing of three greens which, due to weather conditions, had to be curtailed. During the following year, further earth moving took place and a team from the Manpower Services Commission was employed.

This team consisted of older people with some knowledge of agricultural



Cherwell Edge's pro Richard Davies and council parks manager David Harrison flank greenkeeper John Donaldson.



The 18th green and 13th fairway beyond.

work. During 1983, work continued on the construction of tees, clearing woodland and completing drainage works. All work was completed by

September. During the early part of that year, an automatic watering system was installed on the course by a specialist contractor.



Ground work at Cherwell Edge.



People, Places, Products

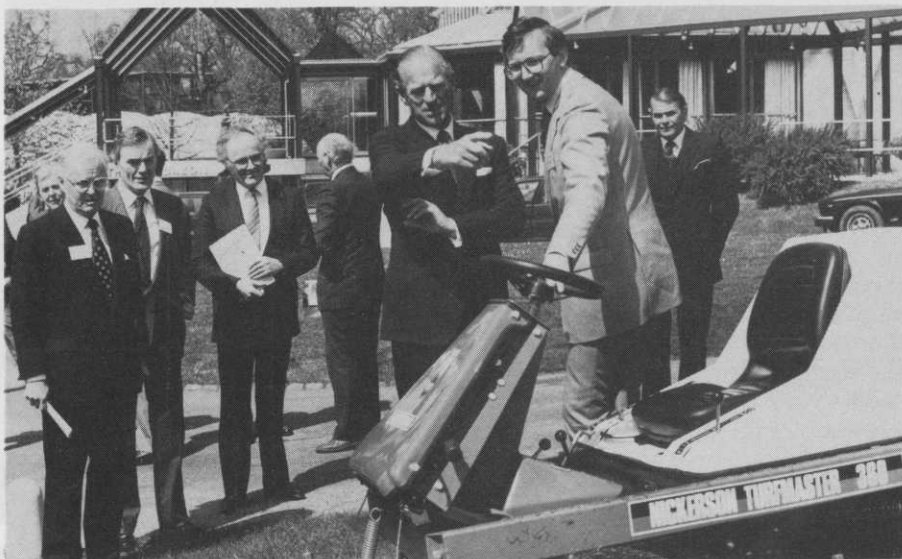
Nickerson Turfmaster was recently presented with its 1985 Design Council Award by HRH The Duke of Edinburgh at the National Motor Museum, Beaulieu, Hampshire. The award, which was won by the Nickerson Turfmaster 360, is believed to be the first given to a grass cutter for professional use.

Formerly European sales director for the Toro Company, Philip York has established a turf and landscape irrigation consultancy for users and specifiers throughout the UK, Europe and the Middle East.

With nearly 20 years irrigation system design and installation experience, Philip said: "I aim to fill a vital gap in the sports turf and landscape markets, where my objective advice and assistance can be used by potential irrigation system purchasers to their advantage."

Citing golf clubs as typical, he said: "Very few greens committees or greenkeepers know enough about sprinkler irrigation systems to be able to evaluate designs and tenders submitted by contractors. By calling me in, they can obtain objective, unbiased advice and guidance before committing the club, its members and their money to installation."

Philip, the British Turf Irrigation Association's first chairman, added: "The BTIA established some fundamental design and installation parameters years ago but, unfortunately, there are still examples of sub-standard systems being quoted. It is my intention, as a founder member of the BTIA, to ensure that not



Graham Templeton, commercial director of Nickerson Turfmaster, shows HRH The Duke of Edinburgh the award-winning 360.

only are these standards upheld, but improved for the benefit of the trade and end-users alike."

For further information, contact Philip York, Touchwood, Ripley, Brangsgore, Christchurch, Dorset BH23 8ES. ☎ Brangsgore 73892.



Philip York.

Bruce Hanham, 40, has been appointed general manager of the bowls specialist company Drakelite. Bruce was formerly divisional manager of Cameron Irrigation, based at Littlehampton, and has been closely linked with the sports and



Bruce Hanham.



Mr JONES LETTER PAGE 11

Mr. Arthur has no comment. Except to point out that he was never Wentworth's adviser, and that he only inspected the Course on behalf of of the P.G.A. (European Tour).

**Appointments
Sales & Wants
Buyers' Guide
Greenkeeper,
of course!
Phone—
0255 507526**

leisure markets. He is a qualified engineer, who specialised in commercial management and was awarded a fellowship from the Engineering Training Board in 1983.

Married with two children, Bruce is an active sportsman, covering football, swimming, golf, cricket, table tennis, squash and now bowls. He can be contacted at Drakelite, 81 High Street, Southwold, Suffolk. ☎ 0502 722002.



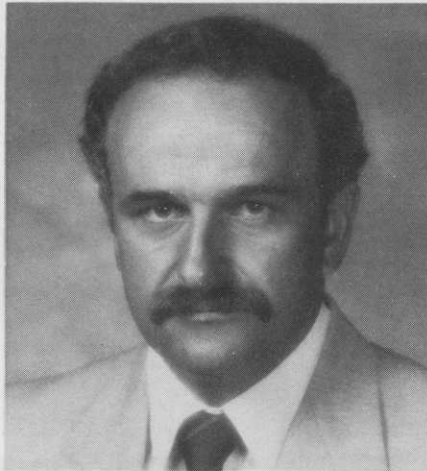
Curt Kimpfbeck.

Curt Kimpfbeck has been appointed director of international sales for Jacobsen. As head of Jacobsen's international department, Kimpfbeck assumes responsibility for increasing sales through the company's network of more than 50 distributors in the UK and Europe, South and Central America, Africa, Asia and Australia.

Previously, he was director of international distribution for Jacobsen. He and his wife Carol live in Racine, Wisconsin.

Ransomes Sims and Jefferies has appointed Helmut Adam, 35, to the main board of directors. President of the company's USA subsidiary in Wisconsin, he was vice president finance until taking up his present

position in 1983. Married with two sons, he left East Germany with his parents 30 years ago to settle in the United States.



Helmut Adam.

Paul Wright's Aeration and Drainage Services offers 'an experienced greenkeeper with a Verti-Drain for hire.' To date, Paul has been commissioned by head greenkeepers John Millen at Canterbury GC, Mike Lower, Chipstead GC, Bob Tingey, Holtye GC and Brian Turner at Worplesdon GC. He has also worked at the Coulsdon and North Downs clubs, for Basingstoke and Rushmoor councils and Southampton Football Club at The Dell.

April-June's edition of the *Sports Turf Bulletin* is a special on bowling greens. Features include notes on construction, spring and summer work, autumn and winter maintenance, special problems with flat greens and pests and disease.

The Hampshire College of Agriculture is running a full-time NCH course in greenkeeping and sportsground management,

beginning at the end of September and finishing during the last week of June next year. Half the course will be practical, covering the principles of plan., growth, greenkeeping and sportsground management, estate and landscape maintenance, supervision and turf machinery. Full details and application forms from Bob Dennis, Head of Horticulture, Hampshire College of Agriculture, Sparsholt, Winchester, Hampshire SO21 2NF. ☎ 096 272 441.

A review of sales and promotional activities by the six distributors of the Steeley Vitax Key range of fertilisers and specialist products reported a 21 per cent increase over the 1983-84 trading period and a further 13 per cent boost in the first quarter of this year. Trevor Martin, manager of Steeley Vitax, has appointed two new distributors—Fyffes Monro in Burscough and Percy Garford at Wisbech. A further appointment to cover south London, Kent and Sussex will be made.

Ransomes technical sales manager Brian Mitchell has been invited to represent the company on the Golf

Continued overleaf..



Brian Mitchell.

farmura The Liquid Organic Fertiliser

Make it part of your turf management programme — from re-seeding to maintenance

farmura

benefits include

- ★ Thicker sward
- ★ Deeper roots
- ★ Improved germination
- ★ Greater resistance to stress

For detailed information, contact your distributor or

Farmura Ltd, Stone Hill, Egerton, Kent. Tel: Egerton (023376) 241

farmura

has been used on a wide variety of sites including

FOOTBALL GROUNDS — Wembley, Aston Villa, Arsenal, Coventry
GOLF COURSES — Birkdale, Lytham St. Annes, St. Andrews, Woburn
RACECOURSES — Ascot, Ayr, Chester, Uttoxeter
LAND RECLAMATION — Work in progress on NCB sites
ALSO on cricket pitches, bowling greens, tennis courts — in fact, wherever grass is sown, grown and mown



People, Places, Products Continued...

Course Superintendents' Association of America's education committee and industrial advisory council.

The invitation to join the two GCSAA committees recognises Ransomes' increasing influence in the United States. "It's a great honour and I feel we've arrived in the US," Ransomes sales and marketing director Guy Catchpole said. Brian is the first resident outside North America to serve on a GCSAA committee.

The third National Turfgrass Conference takes place at Nottingham University from September 25-27. The theme will be *Better Grass, Greater Value*. The full package costs £90, while the conference fee only (no accommodation or meals) is £45. Full details from John Shildrick, 3 Ferrands Park Way, Harden, Bingley, West Yorkshire BD16 1HZ. ☎ 0274 565131 or 0535 273188 (evenings).

Due to demand, TORO has produced weather cabs for some of its commercial models. Cabs are now available for the Greensmaster 300, Groundsmaster 220 and 2170 and Reelmaster 350D. Each cab comprises a steel frame and roof, glass front top screen, perspex front lower screen, wiper and motor, roll-up PVC curtain on the sides and rear,

access zips to the left-hand side and sound deadening in the roof.

Full specifications can be obtained from Graham Dale, sales manager of Lely Import, on 0480 76971.



The Groundsmaster...



...And The Greensmaster.

Any readers managing a golf course with fairy rings, including so-called 'superficial fairy rings' (thatch fungi), who would be prepared to co-operate with a research project supported by The Royal and Ancient Golf Club of St Andrews, should contact Roy Woolhouse, the Sports Turf Research Institute, Bingley, West Yorkshire, BD16 1AU.

In order to meet the growing needs of its expanding membership, the IOG is planning to relocate in new offices at Wolverton, Milton Keynes.

The move, which is being co-ordinated by the Milton Keynes Development Corporation, will bring an extra 1,000 square feet of floor space which will permit not only a fully-equipped suite of administrative offices, but also a computer room, conference facilities, boardroom, library and provision for storage and reference.

• The institute will no longer be directly responsible for the management and maintenance of the Woughton sports complex. The IOG and Milton Keynes Development Corporation will continue to maintain a close dialogue with regard to Woughton (which the IOG is sorry to leave) and other similar amenity complexes in Milton Keynes.

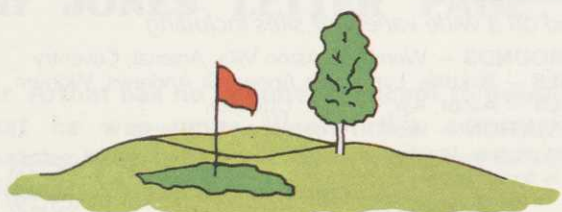
Hyett Adams, UK distributors of Husqvarna chain saws, has launched the new Husqvarna 40, a light and versatile chain saw with an automatic chain brake as standard equipment.

Due to a new ignition system, the Husqvarna 40 is easy to start. It requires only a light pull on the starter cord as the engine fires easily at low revs. The 40 features improved silencing on induction and exhaust resulting in a noise level of only 99dba. A new type of damper element has been incorporated between the engine and handle sections to reduce vibration levels and Husqvarna has reduced the number of component parts for improved reliability and simpler service.

For further information, contact Dave Seed of Hyett Adams on 045 382 2382.

Whether it be construction, drainage or **TORO** irrigation

GOLF LANDSCAPES LTD.



ASHWELLS ROAD
BENTLEY, BRENTWOOD
ESSEX CM15 9SR.

Coxtie Green (0277) 73720

The proven experience in the field



“they’re simply in a class of their

OWN and I’m delighted with the exceptional performance and ability to work under any ground and weather conditions. Hitched up to any attachment the ISEKI TX2160 4WD* ‘HST’ gives me 100% day in day out at a very economical rate. I also have the TE4270 4WD fitted with the appropriate equipment to aerate the fairways and all approaches. As far as I’m concerned I’m using the best team in the business.

Jack McMillan
Course Manager, Sunningdale Golf Club

”

There’s no doubt about it, LELY ISEKI TRACTORS are rapidly becoming the most sought after in turf management. The versatility of any model from 16 to 72hp is second to none and with a wide variety of all British Built attachments which includes the LELY BEAVER GM386 Triple Mower, isn’t it time you had a demonstration on your land.

We have Sales and Service Distributors with fully trained personnel in your locality, why not give us a call now.

*TX range available with LGP Tyres

**LELY ISEKI TRACTORS, STATION ROAD,
ST. NEOTS, HUNTINGDON, CAMBS PE19 1QH.
TEL (0480) 76971 TELEX 32523**



ISEKI



FAIRHAVEN GOLF CLUB HEAD GREENKEEPER

Applications are invited for the position of Head Greenkeeper of this prestigious S.S.S.73 Championship Course.

All applicants must have a proven record of Greenkeeping, Equipment Maintenance, Course Construction and Management.

The Salary, which is generously based on E.I.G.G.A. guidelines, is negotiable.

No accommodation available.

Applications in writing to:

**THE SECRETARY
FAIRHAVEN GOLF CLUB LIMITED
LYTHAM HALL PARK
ANSDELL
LYTHAM ST ANNES FY8 4JU**

BURNHAM & BERROW GOLF CLUB

Applications are invited for the position of Head Greenkeeper at the above Championship Course. (18 and nine hole).

Applicants must have a sound knowledge of all aspects of Greenkeeping, preferably on a Links Course, and experience in modern golf course management techniques.

A practical working knowledge of the use and maintenance of modern greenkeeping machinery together with the ability of motivating and directing staff is essential.

Salary and conditions negotiable.

Please apply in writing, giving age, qualifications and full career experience, to:

**THE SECRETARY
BURNHAM & BERROW GOLF CLUB
ST CHRISTOPHER'S WAY
BURNHAM-ON-SEA
SOMERSET TA8 2PE**

HEAD GREENKEEPER

required by

RAMSEY GOLF CLUB

(18 hole parkland course plus six rink bowling green)

Applications are invited from persons of proven ability and experience in all aspects of course maintenance, who have a thorough knowledge of machinery maintenance and the ability to direct and motivate staff.

Salary negotiable.

Apply in writing, giving details of age, experience and qualifications, to:-

**THE SECRETARY/MANAGER
RAMSEY CLUB COMPANY LIMITED
4 ABBEY TERRACE
RAMSEY, HUNTINGDON
CAMBS**

A 27-HOLE GOLF COURSE IN GWENT, SOUTH WALES REQUIRE A

HEAD GREENKEEPER

Applicants must possess a sound knowledge of up to date golf course maintenance and the ability to direct and motivate staff.

Salary negotiable.

Accommodation may be available.

Apply in writing to Box No 101

**CLOSING DATE FOR APPLICATIONS
1st AUGUST 1985**