

JULY 1987

Greenkeeper



**THE OFFICIAL PUBLICATION OF THE
BRITISH AND INTERNATIONAL
GOLF GREENKEEPERS' ASSOCIATION**

Advisory Services · Agrochemicals
Demonstrations · Education and Training
Mowing and Maintenance · Irrigation
Recreation and Playground Equipment
Seeds, Turf and Plants · Sports Goods
Waste Disposal



Arboriculture and Forestry · Buildings
Engines and Motors · Lectures and Films
Outdoor Furniture · Plant and Machinery
Protective Clothing · Safety and Security
Technical Books and
Trade Journals

ROYAL WINDSOR '87

15th-17th SEPTEMBER 1987: 10am-5pm DAILY

The main event for the Professional Groundsman, Greenskeeper, Landscape Architect, Estate Owner and Manager, Site Operator and Local Authority Employee.

The finest opportunity to see a whole range of developments, discuss services and techniques with experts, and check-test the latest in machinery and equipment.

Venue: The Royal Windsor Racecourse, Maidenhead Road, Windsor, Berkshire. Dates: 15th, 16th and 17th September 1987. Times: 10 am till 5 pm daily. Entrance: By Catalogue £2.00. Complimentary admission to IoG Members.

How to get there: (Windsor is just 22 miles west of London).

By Road: A few minutes off the M4 Motorway (Junctions 8/9 or 6) on the Windsor - Maidenhead road (A308). Ample car parking facilities available at £2.00 per vehicle. Coaches free.

By Rail: Frequent services to Windsor from Waterloo, Reading and Paddington with connections to all parts of the country. A complimentary coach service direct to the Exhibition grounds will operate each morning and afternoon from Windsor & Eton Central and Riverside stations.

By Air: Close to London Heathrow and convenient also for London Gatwick airports.



Organised annually by:
The Institute of Groundsmanship,
19-23 Church Street, The Agora, Wolverton,
Milton Keynes, Buckinghamshire, MK12 5LG
Telephone: Milton Keynes (0908) 311856

This issue

JULY 1987

Front cover: There was universal acclaim for the condition of Jack McMillan's Sunningdale golf course during the Walker Cup and further cause for celebration in the McMillan family camp - see page 11.

ASSOCIATION APPOINTS EXECUTIVE DIRECTOR

3

Neil Thomas gets the top BIGGA job



JOIN BIGGA NOW

6

Your application form - don't delay, send it off today!

GREENKEEPING CAN BE A 'BOARING' CHORE!

8

It certainly is at times for Simon Taylor in the first of a series that looks at the profession abroad

MACHINERY REVIEW

10

The Huxley TR138 - and some of its stablemates - comes under our spotlight

NOTEBOOK

11

Talk of the trade

TOO MUCH WATER OR TOO LITTLE?

12

The NTC's 4th residential seminar could provide the answer

PEOPLE, PLACES, PRODUCTS

14

OUT ON THE COURSE

18

With Ken McNiven

EDUCATION CORNER...

20

APPOINTMENTS

22

And there are more on page 9!

BUYERS' GUIDE

23

Publisher: Fore Golf Publications Ltd

Managing Director: Michael Coffey

Editor: Robin Stewart

Contributors: Jim Arthur, John Campbell, David Jones, Jimmy Kidd, Jack McMillan, Eddie Park, Donald Steel, Howard Swan, Peter Wisbey and Walter Woods

All advertising matter, editorial copy and correspondence should be sent to: *Greenkeeper*, 121-123 High Street, Dovercourt, Harwich, Essex CO12 3AP. Tel: 0255 507526

Subscription rates:

UK-£18 USA-\$45 Continent-£30 Eire-IR £23

Greenkeeper is published ten times a year. Printed in England by J.B. Offset, Marks Tey, Colchester, Essex.
Copyright: Fore Golf Publications Ltd 1987

Association appoints executive director



NEIL THOMAS (above) is the new executive director of BIGGA and, from August, he will be based at the Sports Turf Research Institute, Bingley, West Yorkshire.

His family - wife Elaine, Scott, four, and Grant, two - was recently augmented by another young member and is looking forward to establishing a new home in Yorkshire.

Neil was born in Penarth, South Wales. He attended the local grammar school and, subsequently, the University of Wales at Cardiff, where he obtained a history degree. He later entered local government and soon became a principal officer in the social services department of the newly formed West Glamorgan County Council.

His management progress did not stop there - as a chief administrative officer, he managed personnel, financial and general support services within a large social services department. His experience embraces committee work, working parties and industrial relations.

Neil's first sporting loves were rugby, tennis and cricket, turning out for Penarth in the Welsh Clubs' Cricket Conference. He became hooked on golf following a visit to that memorable 1975 Open at Carnoustie, when Tom Watson held off the luckless Jack Newton in a play-off.

"I've been a fan of Tom Watson since and, in recent years, have enjoyed the meteoric rise of fellow Welshman Ian Woosnam. Carnoustie gave me the inspiration to take up golf and I joined Fairwood Park Golf Club in Swansea. I then spent a couple of years at nearby Clyne GC before returning to Fairwood Park."

Neil describes his current game as "average, but

Continued on page 6...



THE NEW 3 IN 1 GRADEALL BEAVER



- A new concept in greenkeeping, designed for **maximum mobility** the GradeAll Beaver combines blending, shredding and grading in a single unit.
- The reliable, built-in power pack provides tons of high quality top dressing with **minimum effort**.
- The Beaver performs aggressively on poor quality damp soils with stones, shrubs and sods producing a high quality loose and manageable soil. (It will turn tough, lumpy organic humus into a pure workable 100% organic compost). Cricket tables, bowling greens golf greens and fairways — indeed any turf area will benefit from the Beaver's unique capabilities.

GRADEALL INTERNATIONAL LTD.
 9 Farlough Road,
 Dungannon,
 County Tyrone,
 Northern Ireland
 BT7 4DT
 Telephone (08687) 40484.

Applications include:

Car Parks, Caravan Sites, Golf Courses and other leisure complexes, Footpaths, Picnic Areas, Country Parks, Emergency service access lanes.



Caravan Sites

Geoblock gives the ultimate pitch – grass which doesn't wear.

Country Parks and Picnic Areas

Where there is heavy use maintenance costs are cut to the minimum. Reseeding and returfing is needed much less frequently and appearance is maintained.

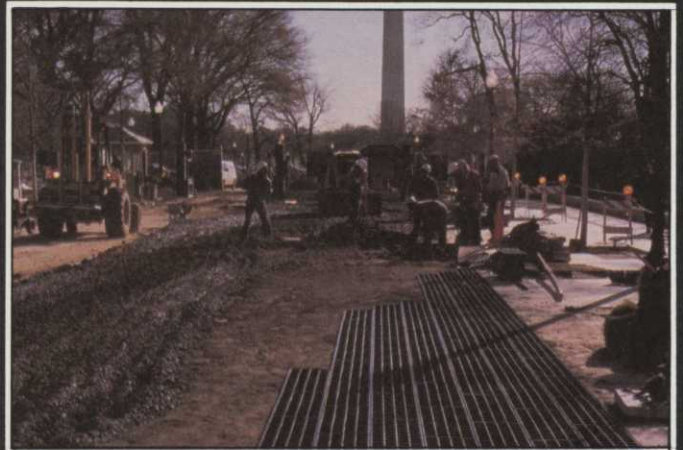
Golf Courses

Protect those areas where wear is heaviest.



Car Parks

If hard surfaces are used the area can become visually at odds with the surrounding area. Geoblock gives a natural appearance – a major benefit in national parks and on sites where visual compatibility with the surroundings is important.



SPECIFICATIONS

HEAVY DUTY GEOBLOCK

Size 925mm x 325mm x 50mm
No. of blocks per pallet – 72.
Square metres per pallet – 21.6
Average weight per pallet – 468kgs

LIGHT DUTY GEOBLOCK

Size 925mm x 325mm x 29mm
No. of blocks per pallet – 120
Square metres per pallet – 36
Average weight per pallet – 408kgs

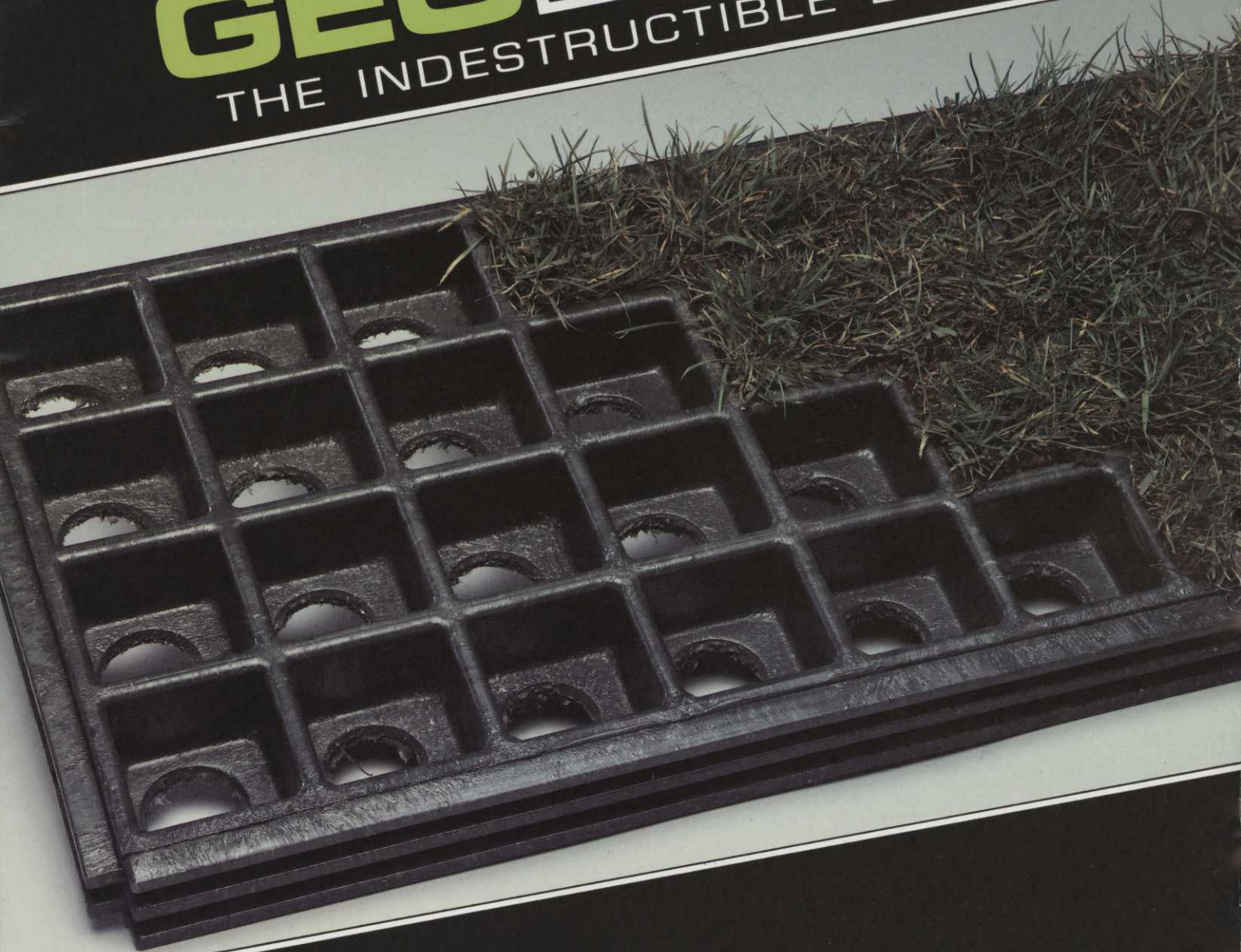
GEOPLAS LTD

HEANOR GATE INDUSTRIAL ESTATE, HEANOR, DERBYSHIRE DE7 7RG
TEL: 0773 530530 TELEX: 377163 ALIDA G. FACSIMILE 0773 530025

A member company of Alida Holdings plc.

GEOBLOCK

THE INDESTRUCTIBLE LAWN



Geoblock system is made up of moulded high strength, low weight, low density polyethylene (LDPE) blocks which will support pedestrian and vehicle traffic, while maintaining a thick cover of grass. Features of the system are:

- Strong interlocking tongue and grooved edges which distributes the traffic load over a wide area.
- Easily installed light weight blocks which can be cut with a hand or power saw to fit contours or obstructions.
- Resistance to chemicals, fertilisers and temperature extremes.
- Availability in two sizes, 50mm depth for heavy duty use, 30mm for light duty use.

Grassed areas with heavy use tend to become compacted and good quality grass cover is difficult to maintain. Wear and compaction in such areas can be minimised by using Geoblock. The blocks provide the load bearing element so that the grass can grow normally without continually being worn away by the traffic. The root system is protected.

Geoblock offers an attractive and effective alternative to hard surfaces particularly in environmentally sensitive areas. When the grass has become fully established the visibility of the block is minimal.

GEOPLAS

Geoplas Ltd
Heanor Gate
Heanor
Derbyshire
DE7 7RG

Telephone: (0773) 530530
Telex: 377163 ALIDA G
Facsimile: (0773) 530025

Date as Postmark

GEOBLOCK - THE INDESTRUCTIBLE LAWN KEEPS THE COURSE LOOKING GOOD

Dear Greenkeeper

The Golf Course is a place for relaxation and an increasing number of people are playing the game. It is also part of the natural environment which under heavy use can very easily show signs of unsightly wear and tear.

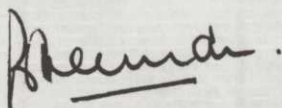
Under many pairs of feet grass becomes compacted and dies leaving bare patches which damage the overall attractive appearance of the course.

GEOBLOCK is the answer to the problem. The moulded plastic block absorbs the loads, protects the root system and enables the grass to grow normally. Once established it is unobtrusive and the grass can be mown in the normal way.

So, if you have paths, car parks, verges or other grassy areas that are showing signs of wear and tear consider GEOBLOCK.

Complete the reply paid card and return it to us and we will make contact with you to discuss the product in more detail

Yours sincerely



P J Freeman
SALES DIRECTOR

Enc

Please send details as ticked boxes

Lib. serv. Annual Dir.

Inst. Dir.

Name _____

Address _____

Telephone _____



If you're looking for the best value it can only be **TORO** ... we may not be the lowest price but in the long run **TORO** are by far the finest economical and efficient **TURF MANAGEMENT EQUIPMENT**.

To prove the point why not have a demonstration working under your own conditions ... you'll soon see what we mean particularly if you have other equipment to compare.



Quality Performance Reliability

most manufacturers say it

we mean it!

Please send details as ticked box/s

Literature Nearest Dealer
Trial/Demo

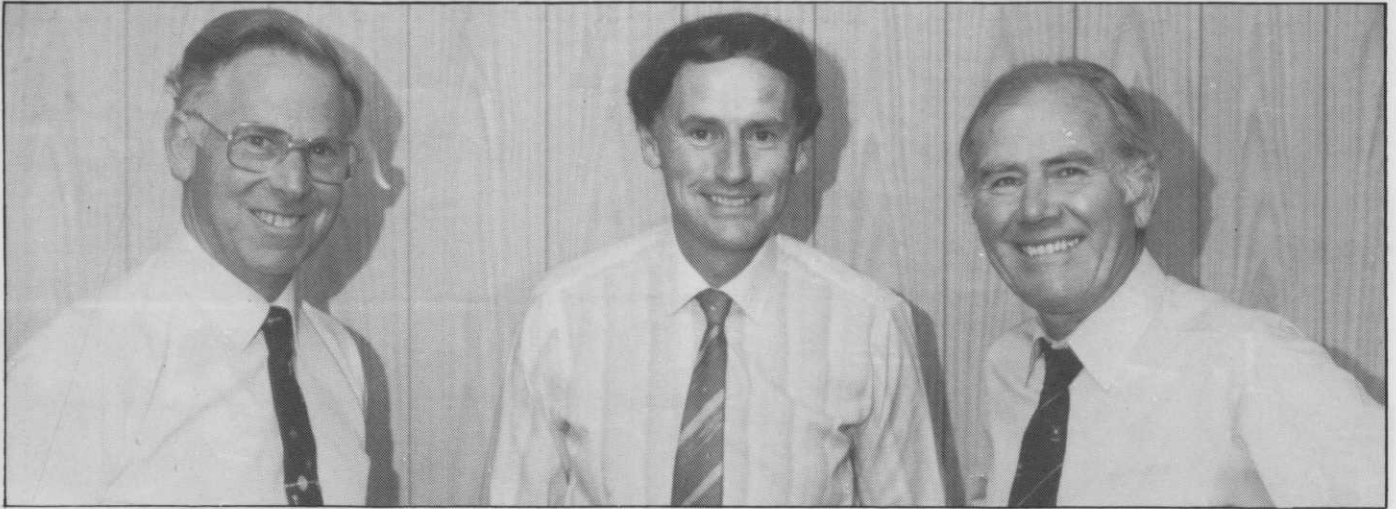
Name

Address

Telephone

G/7/87

LELY (UK) LTD Station Road, St Neots, Huntingdon, Cambs PE19 1QH Tel (0480) 76971 Telex: 32523



Neil Thomas is flanked by Peter Wilson (left) and Walter Woods.

in dire need of more practice!"

"I am very excited by the job that awaits me and look forward, through the board of management, to organising the association's affairs. It's my aim to establish BIGGA as a major force in the game and, to this end, I am ready to listen and learn. I feel it is of paramount importance that the membership makes its views known - the association is there for the members' benefit.

"At present, course managers and greenkeepers generally have a low profile. A unified association will be able to project a far more positive image of the profession, nationally as well as internationally.

"Our public and press relations will be tightened up and I aim to get around the regions to meet the

members as soon as possible, although I would ask for patience in the early stages! There is much to be done and a secretariat to be established at Bingley.

"I was very impressed by the way board of management members, all working course managers, sacrificed their time to establish BIGGA and the contribution by the two R&A trustees, Peter Wilson and Roger Robinson, was invaluable.

"There's no reason why the association cannot become pre-eminent within golf. The board and I will set about achieving this and it is my fervent hope that we will receive the backing and active participation of every member, enabling BIGGA to become established and then move forward."

BRITISH and INTERNATIONAL GOLF GREENKEEPERS' ASSOCIATION

APPLICATION FOR MEMBERSHIP

Greenkeeping member

Name in full Club

Position

Trade or Associate member

Name in full Company

Position

Preferred mailing address

I attach my cheque for £15 (plus VAT) = £17.25 Signed.....

Return to: The Executive Director, BIGGA, Sports Turf Research Institute, Bingley, W. Yorkshire.

Watermation

FOR GOLF COURSE IRRIGATION

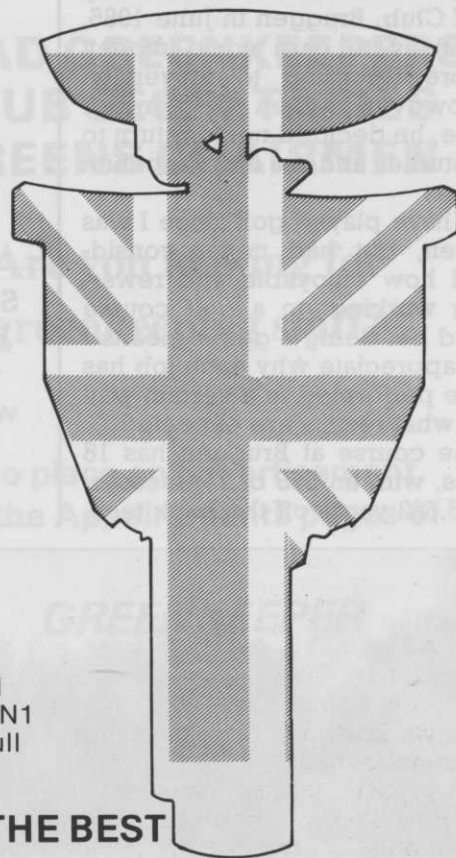
Rainbird sprinklers are made in California, so are Toro, so are Buckner. Weathermatic sprinklers are made in Texas, Perrot sprinklers are made in Germany and Roland are made in France... but

Watermation Sprinklers are made in Britain

Along with their unique TW1 and TW2 computer controllers and other specialist equipment, Watermation have now designed and built their own GN range of sprinklers. Apart from keeping their own people in work, there are other advantages to buying British. The prices won't be subject to increase with the dollar, deutschmark or franc and there are always spare parts quickly available.

We don't expect you to buy Watermation sprinklers just to be patriotic. They are high quality sprinklers made from brass, bronze and stainless steel in a heavy cast corrosion resistant body. The internal mechanism has a multi fit guide plate so that it can be used to refurbish the Rainbird 21-47 range or the Weathermatic K range — thus saving money.

All the GN sprinklers have thick moulded green rubber tops and have been specially designed for golf course irrigation — the GN1 for tees, the part circle GN2 for the greens and the long range full circle GN3 for fairways.



BUY BRITISH — BUY WATERMATION — BUY THE BEST

Watermation Ltd., Monument Way E., Woking, Surrey GU21 5LY.
Tel: Woking (04862) 70303 & Stirling (0786) 70252.

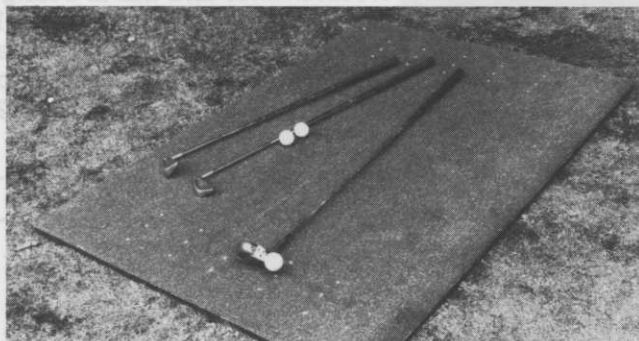
CARPETITION

LTD.

THE 'TUFTURF' TEE MAT —

Like a piece of firm, well sprung fairway

FOR TEE SHOTS



AND FAIRWAY SHOTS



"A British made porous hardwearing all weather tee 1.5m x 1m and 2m x 1m. Synthetic grass, bonded to reconstituted rubber underlay shock pad with 60 tee inserts, combine to give a superb playing surface. Its use is highly beneficial as a WINTER TEE, or when re-turfing tees in the playing season. Also ideal for DRIVING RANGES and PRACTICE GROUNDS both indoor and outdoor."
Further details from:-

CARPETITION LTD.,
6 KAFFIR ROAD, EDGERTON,
HUDDERSFIELD HD2 2AN.
Tel: 0484-28777

SIMON TAYLOR, 22, joined the greens staff at the RAF Germany Golf Club, Bruggen in June 1985, originally to earn some money before returning to university.

However, when September came, he decided not to return to his studies and the club kept him on.

"I have played golf since I was eleven, but had never considered how enjoyable and rewarding working on a golf course could be. Being a golfer means I can appreciate why each job has to be performed in a certain way and what results are expected."

The course at Bruggen has 18 holes, with an SSS of 71, measuring 6,522 yards off the back tees.

Greenkeeping can be a 'boaring' chore!

Simon Taylor works at RAF Bruggen in West Germany where he has to contend with some unusual damage to the course within the station's grounds...

There are three members of the greens staff and an extra worker in the summer. The course is heavily wooded, which means there is plenty to do during the winter when the weather prevents other jobs being undertaken.

"Removing dead and misshapen trees improves the appearance of the course and speeds up playing time. It also makes it easier for the sun and the wind to get through to wet areas. I find tree work in the winter healthy and enjoyable and a welcome change from painting tee markers and flagsticks.

"But the major problem we have at Bruggen is damage to the course by wild boars. This problem occurs most years and it is a long and laborious task levelling out soil and replacing turf so that the ground can recover. Special lamps, smelling deterrents and even gas-guns have little success in keeping the boars away and it is very frustrating to spend all day repairing a damaged area of fairway only to find it ripped up again the next day.

"In 1986, eight fairways were quite extensively damaged and repair work went on until May. Naturally, this meant that basic course maintenance suffered and, to some extent, our summer programme depends on just how much boar damage we experience in spring.

"Permission to shoot the boars has to be given by the German forest master and this is a lengthy process which, in any case, has little overall effect, as the damage has been done by the time per-

Continued on page 21...



Simon Taylor - exasperated by the boar damage to his 16th fairway.

*We've built more courses than everyone else put together...
for new constructions, alterations or improvements on your course...*

GOLF LANDSCAPES LTD.

ASHWELLS ROAD
BENTLEY, BRENTWOOD
ESSEX: CM15 9SR

Telephone: (0277) 73720
Telex: 995215 GOLF LG



*The proven experience in the field
for construction, drainage and irrigation*

BLACK FEN TOPSOIL

Tel: G. J. Moyses
(0733) 69447

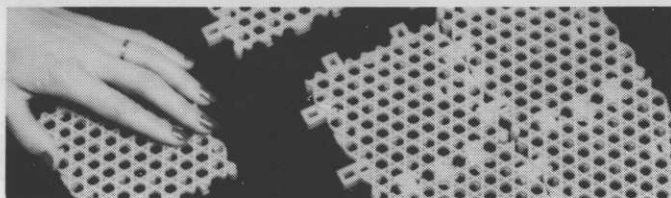
HEAD GREENKEEPERS CLUB SECRETARIES GREENS CHAIRMEN

Are you looking for
greenkeeping staff?

To place an advertisement
in the Appointments pages of

GREENKEEPER

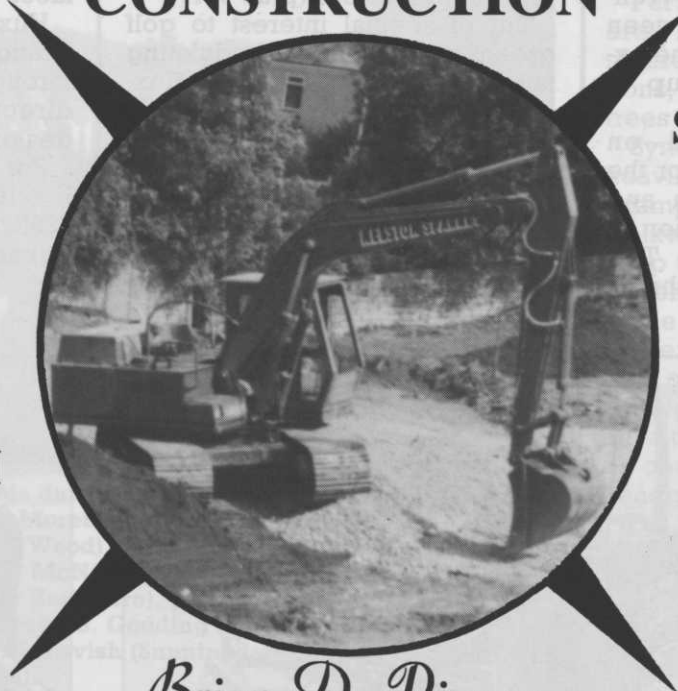
PHONE LINDA BAKER
ON 0255 507526



NO DIVOT FILLING
INSTALLATION ON TURF OR SEED
ALL YEAR PLAYING
LESS MAINTENANCE
LIGHTWEIGHT AND TOUGH
CAN BE ROLLED UP
PROTECTS GRASS ROOTS
NO MUDDY PATCHES
EXCELLENT GRIP FOR PLAYERS

TECNOTILE 64 OAKHURST GROVE LONDON SE22 9AQ 01-693 6287

COURSES CURRENTLY UNDER CONSTRUCTION



ST. ANDREWS
(JUBILEE)

PUTTENHAM

BARNHAM
BROOM

Brian D. Pierson
(Contractors) Limited

Homestead Farm, Ringwood Road, Three Legged Cross, Wimborne, Dorset. BH21 6QY
Telephone: Verwood 822372 & 824906 (STD 0202)

MACHINERY REVIEW...

Stately Setting For Professional Grass And Turf Equipment Show



The splendid backdrop of Stratfield Saye House, with its 30 acres of landscaped grounds, provided the perfect setting for a demonstration of three new items of professional grass and turf maintenance equipment from Huxleys Grass Machinery.

The company's full range of equipment, which includes the Cushman, Huxley, Royer, Little David, Red Rider and Yankee product names, as well as the latest introductions, were shown as part of a three-day exhibition.

Staged at the country estate of the Duke and Duchess of Wellington, situated midway between Reading and Basingstoke, the exhibition attracted one group of visitors from Madrid.

Their interest centred on Huxley-made attachments for the Cushman turf care system and particularly the latest addition to the range - the H44 Fine Turf Scarifier for use with Cushman Turf Truckster vehicles.

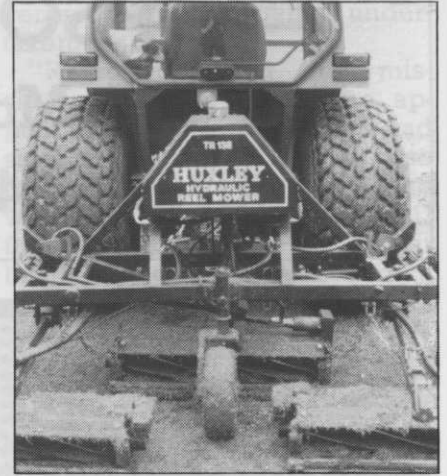
Of identical working width, and operating details, the Huxley TV36 Fine Turf Scarifier has been produced by the company for use with the smaller compact tractors in the 14 to 18hp range. The Huxley H44 and TV36 Fine Turf Scarifiers both cost £1,335 (plus VAT).

The second machine making its first major public working appearance at Huxley's Stratfield Saye exhibition was the latest Cushman Front Line ride-on rotary mower with its three-cylinder, 21.5hp diesel-engine, priced from £9,830 (plus VAT).

But of special interest to golf greenkeepers, with undulating fairways to maintain, was the Huxley TR138 Golf Course five-gang hydraulic reel mower, with its new floating top link and rear castor wheel options.

Although providing all the transport and manoeuvrability benefits of a fully tractor-mounted machine, these two optional

Pictures show the 3.5m (11ft 6in) cut Huxley TR138 Golf Course mower.



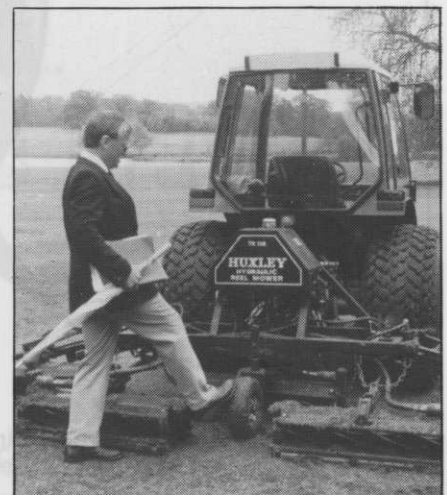
items give the mower the characteristics of a trailed unit in work, allowing the frame to follow ground contours independently of the tractor.

The Huxley TR138 Golf Course mower has twinroll floating head cutting units as standard and is equipped with seven-knife reels for a precision finish.

In standard form, this 11ft 6in (3.5m) cut mower, which requires tractors developing a minimum of just 25hp, costs £6,700 (plus VAT). The floating top link and castor wheel options for undulating surfaces add £125 (plus VAT).

Huxleys can arrange demonstrations of any item of equipment throughout the country, either direct or through appointed dealers.

For more details, contact Paul Huxley on Alresford (0962) 733222, or Barry Huxley on Egham (0784) 38666.



Nice One, Jack!



Just about the only cheery note to come out of the recent Walker Cup debacle at Sunningdale was the universal acclaim for Jack McMillan's golf course. There was further cause for celebration in the McMillan household, for youngest son Cameron, 21, had just landed the top job at Liphook Golf Club, Hampshire, making it a full set of head greenkeepers following in father's footsteps.

Sunningdale courses manager Jack lined-up with (from left to right): Ian, 26 (Hankley Common), Bobby, 29 (Upminster), Stewart, 30 (Leatherhead), Billy, 29 (Sunningdale) and Cameron. Proud Jack said: "The McMillan family - 97 years in greenkeeping, 62 as head greenkeepers and its early days yet!"



Among the many helping hands during the Walker Cup were, standing: Cyril Hollis, G. Wilson and A. Moreton (all Sunningdale), Bobby McMillan, A. Watson (Tyrrells Wood), Billy McMillan, B. Wiles (RAC), M. Howton, Jack McMillan, G. McNiven (all Sunningdale), K. McNiven (Effingham), Bob Moreton (The Berkshire), J. Houston (Addington Palace) and D. Green (Sunningdale). Front: S. Godding (Sunningdale), Stewart McMillan, Ian McMillan, N. McTavish (Sunningdale), Cameron McMillan and Ian McNiven (Sunningdale).

Bill Brown has retired from the post of head greenkeeper at North Hants after 21 years.

At a ceremony in the club-

house, the captain, major-general Pat Kay, paid tribute to the outstanding way Bill had carried out his duties, presenting

Changing Times At The Home Of Golf

The Links Management Committee at St Andrews recently opened five Playturf synthetic tees on its full-size practice ground.

The synthetic tees - the first artificial turf at St Andrews - were supplied and laid by Charles Lawrence Scotland. Each tee measures 5ft by 13ft and consists of an excavated porous base 6in deep, a ½in rubber shockpad and a woven carpet surface with a ¾in pile of green polypropylene.

Playturf was chosen after a two-year comparative trial of synthetic tee materials carried out at Stirling University for the Scottish Sports Council.

The new practice ground at St Andrews is a temporary arrangement following the purchase of 120 acres of farmland south of the Old Course.

Major developments, involving remodelling the 18-hole Eden and 9-hole Balgrove courses, are planned for late 1988 and, at that time, the synthetic tees will be moved to a new permanent practice ground. The small old practice area is now restricted to seven-irons and upwards.

Permanently laid synthetic tees are being increasingly considered for other stressful locations, such as winter tees, under trees and par-three holes.

Synthetics are used as well for heavily trodden paths. A recent example is the porous rubber walkway laid between the pro's shop and 1st tee at the Tytherington club, near Macclesfield.

The Charles Lawrence group is also experimenting with synthetic golf greens. As a first initiative, Charles Lawrence have installed an 'alternative' synthetic green at a course near their Newark headquarters.

For further information, contact Mike Abbott or Dave Blamire, Charles Lawrence Scotland, 42 Silverknowes Road, Edinburgh EH4 5LF. Tel: 031-312 7976. The Newark, Nottinghamshire office can be contacted on 0636 76218.

the course in top-class condition.

Bill received a framed certificate granting him courtesy of North Hants for life.

TOO MUCH WATER OR TOO LITTLE? THE NTC'S 4th RESIDENTIAL SEMINAR COULD PROVIDE THE ANSWER

The National Turfgrass Council has established a tradition of topical and successful conferences, which draw together the industry's leaders. The fourth conference, a residential seminar at the Post House Hotel, Allesley, near Coventry, maintains this tradition. The subject - *Water Management For Turfgrasses* - will be covered in three sessions over one and a half days on Wednesday and Thursday October 21-22.

Good drainage is essential on the golf course and, yet, an STRI survey in 1981 showed four out of five courses had a drainage problem on at least one green. Research work has been under-

taken at Aberystwyth and Bingley to investigate the best construction methods and the right sands to use in different situations, to give the benefit of extra play throughout the year. This work will be reviewed in two papers, one by Steve Baker from Bingley and the other by Bill Adams and Richard Gibbs from Aberystwyth. There will, no doubt, be plenty of attention to the use of sand for golf greens.

Against all this research background, Geoffrey Davison of Cambridge Associates will describe the kinds of turfgrass drainage system that can be installed today and how to keep them effective, in spite of surface

capping and compaction. The various bypass systems (sand-slitting, surface-banding, etc) are particularly important in this respect. In the fourth paper of the first session, Bob Fry of the Land Drainage Contractors' Association will review the drainage industry, the cost benefits it can offer and likely future developments.

The second session looks at water management from the opposite point of view, making sure turfgrasses have sufficient water, especially on the free-draining constructions considered earlier in the day. Of all the technologies the greenkeeper has to master, irrigation is probably the most



Join Dr. Peter Hayes, DIRECTOR - STRI, James Kidd, ESTATE MANAGER - GLENEAGLES, Howard Swan CHAIRMAN - NTC and many more experts from the UK and International Turfgrass Industry, to discuss the subjects essential to the success of your job.

The Workshops will be of particular value to those delegates with responsibility for the planning and purchasing of products and the day to day management of all turfgrass situations.

Also of considerable interest to delegates will be the exhibition of a wide range of products and services, and the outdoor demonstrations of turf maintenance machinery.

WORKSHOP DATES AND VENUES

- Tuesday 6th October**
STIRLING UNIVERSITY - SCOTLAND
- Wednesday 7th October**
HOUGHALL AGRICULTURAL COLLEGE - DURHAM
- Thursday 8th October**
NATIONAL AGRICULTURAL CENTRE - STONELEIGH, WARWICKSHIRE
- Tuesday 13th October**
BRITISH STEEL COMPLEX - EBBW VALE, GWENT, SOUTH WALES
- Wednesday 14th October**
OAKLANDS HORTICULTURAL COLLEGE - ST. ALBANS, HERTS.
- Thursday 15th October**
MERRIST WOOD AGRICULTURAL COLLEGE - WORPLESDON, SURREY

Attendance at the Workshops will be by ticket only and these are available from the organisers on receipt of the attached application form and a cheque or postal order for £7.50 (incl. VAT) for each delegate made payable to **Turf Care Workshops**. This small charge covers luncheon, refreshments and a publication containing full details of all the speakers' presentations.

Numbers may have to be limited - early application is recommended.

complex, both in the equipment itself and the understanding of its proper use.

The session starts with two of the country's most knowledgeable turfgrass irrigation specialists. Robin Hume deals with all kinds of sports turf, for which the ability to provide irrigation, at some period or other in the year, is virtually essential in a good management programme. Philip York will review the development of irrigation for landscaping and prestige amenity areas, where the importance of irrigation in order to achieve the highest standards, even in our climate, is just beginning to be recognised.

Two top managers, David Bracey of the Metropolitan Police Sports Club and Jimmy Kidd of Gleneagles, will explain how irrigation is integrated with mowing, fertiliser application and all

the other aspects of fine turf management. In the session's final paper, Bob Moore from the Aquatrols Corporation of America will explain a technique that is becoming increasingly important - the use of wetting agents to ensure maximum water efficiency on turf, especially where thatch-related conditions cause problems.

In the third session, the perspective widens to include water in and around turfgrass areas. Glyn Williams of the Severn-Trent Water Authority reviews the availability of this basic resource - no irrigation system can function without assured supplies of sufficiently good quality water. Recent pesticide legislation has put particular emphasis on avoiding the contamination of water, in the ground or in waterways, and it will be especially valuable to

learn the proper management of the water areas themselves from this point of view. Gordon Fisher of Land Capability Consultants will deal with this topic.

The conference's second guest from North America is Jim Watson of TORO, who will explain what the USA has done to conserve water by using it more efficiently - another aspect of the wise use of irrigation. Finally, Peter Hayes of the Sports Turf Research Institute will look back over all aspects of water management and the needs of various turfgrass species. He will review research currently in progress in order to forecast the sound management practices of future decades.

Details of the seminar and a booking form are available from J.P. Shildrick, Secretary, NTC, 3 Ferrands Park Way, Harden, Bingley, West Yorkshire BD16 1HZ. Tel: Bradford (0274) 565131.

PROGRAMME

10.00am
Registration of delegates - Coffee

10.25am
Chairman's introduction
HOWARD SWAN, CHAIRMAN - NATIONAL TURFGRASS COUNCIL

10.35am
"Research today for the needs of tomorrow"
Dr. PETER HAYES, DIRECTOR - SPORTS TURF RESEARCH INSTITUTE

11.05am
"Modern turf nutrition"
KARL SEELIGER, SKW Trotsberg AG, West Germany

11.35am
"The thinking mans guide to turf irrigation"
PETER ROBERTS, GENERAL MANAGER - TORO IRRIGATION

12.05am
Discussion

12.15pm
Exhibition - Demonstrations
TURF MAINTENANCE MACHINERY DEMONSTRATIONS
Featuring Equipment from **Lely UK** (Toro Machinery) and **Sisis (Equipment) Ltd.**

Buffet Luncheon

2.15pm
"Organics towards balanced management"
JONATHAN HARMER, DIRECTOR - FARMURA ENVIRONMENTAL PRODUCTS

2.45pm
"Chemicals - Management tools for the future"
KEITH CLEVERLY BUSINESS MANAGER - ICI PROFESSIONAL PRODUCTS

3.15pm
"Gleneagles a natural experience"
JAMES KIDD, ESTATE MANAGER - GLENEAGLES HOTEL AND INTERNATIONAL SPORTS COMPLEX

4.00pm
Discussion and close

4.15pm
Tea - Exhibition

A complete and fully illustrated prestige publication featuring the 'Workshop' presentations given by all the speakers including special papers from both **Lely UK** (Toro machinery) and **Sisis (Equipment) Ltd.** will be available to each 'Workshop' delegate.

WORKSHOP DATES AND VENUES

- Tuesday 6th October**
STIRLING UNIVERSITY - SCOTLAND
- Wednesday 7th October**
HOUGHALL AGRICULTURAL COLLEGE - DURHAM
- Thursday 8th October**
NATIONAL AGRICULTURAL CENTRE - STONELEIGH, WARWICKSHIRE
- Tuesday 13th October**
BRITISH STEEL COMPLEX - EBBW VALE, GWENT, SOUTH WALES
- Wednesday 14th October**
OAKLANDS HORTICULTURAL COLLEGE - ST. ALBANS, HERTS.
- Thursday 15th October**
MERRIST WOOD AGRICULTURAL COLLEGE - WORPLESDON, SURREY

Please tick the Workshop Venue you will be attending.

NAME

ADDRESS.....

.....

.....

I would like to attend a TURF CARE WORKSHOP and have indicated my preference of venue above.

I have enclosed a cheque/postal order for £..... made payable to **Turf Care Workshops** in payment for tickets at £7.50 each (incl. VAT)

Signed.....

PLEASE COMPLETE THIS COUPON, TEAR OFF AND RETURN TO - TURF CARE WORKSHOPS, FREEPOST, BASILDON, ESSEX SS16 6BR

People, Places, Products

Scottish Agricultural Industries and Norit-Klasmann (Scotland) have announced that SAI has purchased the business of Norit-Klasmann (Scotland), enabling SAI to continue expanding production of its peat and compost products. Further details from A. Gordon of SAI Horticultural Products. Tel: 0506 39281.

When Groves Marketing, manufacturers of Soilife, were taken over, Soilife, used by many greenkeepers to help overcome drainage and compaction problems, looked lost to the marketplace.

Now, Interbac are producing a range of enzyme products in Cork and Soilife is, once again, available. Farrant Chemicals have been appointed the sole UK marketing agents and all enquiries should be sent to their new office at 37/39 Southgate Street, Winchester SO23 9EH. Tel: 0962 51226.



Walton Heath secretary Wing Commander Bill McCrea (left) and head greenkeeper Clive Osgood (second right) took delivery of the Case International 485 tractor with loader and McConnell ditcher/digger.

Sportsturf consultants John Hacker and Mike Harbridge have joined Vitax to advise on product usage for sportsgrounds, golf courses, landscaping and general amenity areas and new product development.

The company's new fine turf fertiliser Weed 'n' Feed Extra is now available in 50sq yd (3kg) and 100sq yd (6kg) packs. At pre-

sent, the development is only available in 10kg bags (to treat 142m²) and 25kg bags (to treat 357m²).

Further information on Weed 'n' Feed Extra can be obtained from the Technical Advisory Service, Vitax, Palais Buildings, Liverpool Road North, Burscough, Ormskirk, Lancashire L40 0SB. Tel: Burscough (0704) 893311.



Right Farm Equipment

New and Second-hand Tractors and Grass Cutting Machinery

FOR SALE

RANSOME 180. 170 hours only.
RANSOME Hydraulic Mounted 5 gang mower, fully reconditioned.
HUXLEY Hydraulic Mounted 3 gang mower.
MASSEY Ferguson 35, fully reconditioned.

SISIS Autocrat, fully reconditioned.

We are only a phone call away on
042 878 532

FOR HIRE

Verti-drain and auto seeder for hire
Cricket - Golf Greens - Rugby - or
Football Pitch
quotes given - Tractor/Driver and Verti-drain
all included

Ring now for bookings -
0873 880244 Keith Morgan

Any distance covered
also main Jacobsen agent, South Wales

HA 1391

M&B May & Baker
ENVIRONMENTAL PRODUCTS

**THE PROFESSIONAL CHOICE...
FOR CONTROL AND CONVENIENCE**

CLEARWAY is a trade mark of May & Baker Ltd.
May & Baker Ltd., Regent House, Hubert Road, Brentwood CM14 4TZ.

CLEARWAY CONTAINS SIMAZINE, AMINOTRIAZOLE AND AMMONIUM THIOCYANATE.
READ THE LABEL BEFORE YOU BUY. USE PESTICIDES SAFELY.

People, Places, Products - Continued...

ICI, whose wholly owned subsidiary, SAI, supplies fertiliser and peat-based products to Scotland, much of England and Wales, is to integrate its marketing arrangements.

Production by SAI of fertilisers and peat-based products will continue at their various sites, but ICI's plant protection division will be responsible for sales and marketing of the current SAI and ICI product ranges. Garden and amenity products will be marketed by ICI's garden and professional products departments and those for commercial growers by ICI Midox, which currently handles ICI's range in that sector.

In Scotland, the latter products will continue to be sold by SAI as ICI's sole distributor.

SAI production staff will not be



The Hodges & Moss low ground pressures sprayer at work.

affected by the changes and almost all technical and sales staff will be integrated into the new structure, which will become effective from next January.

For further information, contact Richard Walker at ICI's plant protection division on Farnham (0252) 724525 or Alec Gordon, SAI Horticultural Products. Tel: Livingston (0506) 39281.

The Belfry recently called in Shropshire amenity experts Hodges & Moss to conduct a comprehensive weed control programme on the Brabazon and Derby courses.

A two-man team from Hodges & Moss accomplished the task, with the help of a special low ground pressure self-propelled sprayer, in two days.

GREENKEEPERS!

AQUAFLOW+

Two functions for the price of one!

NEW!
FROM THE PEOPLE WHO KNOW ABOUT WATERING SYSTEMS

Aquaflow Plus, the simple way to computerise your golf course watering system without having to worry about computer languages. Benefits include:-

- 4 automatic start times per day/night.
- 2 automatic syringe start times per day-full or zoned.
- Unlimited number of manual starts • 7 day operating cycle • No computer language needed!

PLUS - A DUAL PURPOSE

Your Club Secretary can use Aquaflow Plus to run his office - ideal for membership listings, subscriptions, handicaps, competition dates, pay-rolls etc.

ISS

Designed to connect to most existing golf course watering systems, Aquaflow Plus reduces installation costs to a minimum.

Ask Gary Parker for more details - he will be pleased to show you how...

IRRIGATION & SLURRY SERVICES
LOUVAIN · QUAVEY ROAD · REDLYNCH · WILTSHIRE SP5 2HH
TELEPHONE: DOWNTON (0725) 20377

Toro Irrigation Area Distributor

HA 1395

M&B May & Baker

ENVIRONMENTAL PRODUCTS

Lurmark
M&B May & Baker
ENVIRONMENTAL PRODUCTS
The colour coded KEMATAL® range of Nozzles for use on most sprayers.

NOZZLE GREEN 08-1710
YELLOW 05-1710
BLUE 06-1710
NOZZLE GREEN 08-1710
CAMBODGE BLUE 06-1710

Lurmark
M&B May & Baker
ENVIRONMENTAL PRODUCTS
THE LEADERS IN SPRAY TECHNOLOGY
SMALL SPRAYER APPLICATIONS

THE LEA
M&B May & Baker
GY

**THE PROFESSIONAL CHOICE...
FOR CONTROL AND CONVENIENCE**

LURMARK JETS
Manufactured by LURMARK LTD., Cambridge England.
May & Baker Ltd., Regent House, Hubert Road, Brentwood CM14 4TZ.

Wheel Of Fortune

L.D. Bourgein Oxford's latest attachment for the Task Force 700 trencher is the Oxford Wheel. It features tungsten carbide cutting tips to deal with the worst of ground conditions, including stone, concrete and brick found on made-up sportsgrounds.

The Oxford Wheel attachment ensures a fast neat trench with minimum disturbance, the spoil being removed by alloy conveyor at trailer height. Standard trenches are 2in wide by 10in, variable to 16in deep.

Other attachments include the VariDrainer for trenches 2½in to 8in wide by 0 to 25in deep, with 100 per cent soil pick-up and the standard boom for trenches 4in to 18in wide by up to 4ft deep.

Another Bourgein development is the fully automatic laser depth control, which means that, whatever the surface conditions, a level trench base with 0 to 11 per cent grades is guaranteed.

These attachments, together

with the dozer and backhoe options, make the TF700 a versatile machine.

L. D. Bourgein Oxford has offered a trencher sales and hire service for over 20 years, supplying the full range of Case/Davis trenching equipment. These are available with tracks or rubber tyres and units range from 10 to 70hp. The company will advise on the correct specification for each job.

Full details from L.D. Bourgein Oxford, South Hinksey, Oxford OX1 5AZ. Tel: 0865 735420.

John Shaw Machinery recently held a field day at their headquarters near Hailsham, East Sussex. Among the many machines demonstrated were several models from the TORO range, including the new Reelmaster 216, Reelmaster 450D and Greensmaster 300.

For further details, contact Graham Dale at Lely (UK) TORO, Station Road, St Neots, Huntingdon, Cambs PE19 1QH. Tel: 0480 76971.

West Malling To Defend Course Management Title

The Course Management Trophy will again be held at Hankley Common Golf Club, on Tuesday August 4. The competition, for teams of three consisting of head greenkeeper/course manager, secretary and green committee chairman from each competing club, has a Bowmaker format (the best two Stableford scores from three) over 36 holes.

Winners of the inaugural meeting in 1986 were West Malling GC, who will be defending the trophy this year.

Hankley Common, used for Open Championship pre-qualifying, is a heathland course originally designed by James Braid and was described by the late Charles Lawrie as one of the best inland layouts in Britain.

Entry forms are available from the secretary, Hankley Common GC, Tilford Road, Tilford, near Farnham, Surrey GU10 2DD. Tel: Frensham (025125) 2493.

"FENDRESS"®

THE TRULY NATIONAL TURF DRESSING AS SUPPLIED TO MANY CHAMPIONSHIP COURSES

A Superior Top Dressing, using soils with a low clay and silt content, carefully blended with Fenland Peat and Lime Free Silica Sand, shredded and sieved. Ready for immediate application to golf/bowling greens.

Save purchasing expensive equipment, which stands idle for much of the year. Also high labour costs and problems of finding suitable ingredients of constant quality.

BULK DELIVERIES TO ALL PARTS OF THE UK IN 10, 15, 20, 25 TONNE LOADS. CUSTOMERS IN BELFAST, ABERDEEN, PLYMOUTH, EAST ANGLIA, ETC.

PLEASE REMEMBER, THERE IS ONLY ONE TRUE FENDRESS, WHICH IS A REGISTERED TRADEMARK. BEWARE OF IMITATIONS.

Pre-Packed supplies available. Special mixes to your specification prepared. Also, Screened Sedge Peat ('Fenpeat') in bulk. Lime Free Sands, White or Yellow. Screened Loam, etc.

Please telephone T.J. Banks for quotations. You will be surprised by our competitive prices.



Contact: Fen Turf Dressings Ltd., Suite 3, Angel Court, Dairy Yard, High Street, Market Harborough, Leics LE16 7NL. Tel: Market Harborough (0858) 64346.

HA 1383

M&B May & Baker
ENVIRONMENTAL PRODUCTS



**THE PROFESSIONAL CHOICE...
FOR CONTROL AND CONVENIENCE**

ROVRAL is a trade mark of May & Baker Ltd.
May & Baker Ltd., Regent House, Hubert Road, Brentwood CM14 4TZ.

ROVRAL CONTAINS IPRODIONE.
READ THE LABEL BEFORE YOU BUY: USE PESTICIDES SAFELY.

Round first with Ransomes



MOUNTED HYDRAULIC 5



MOTOR 350D



VERTICUT 214

When the course has to be at its best, Greenkeepers can rely on RANSOMES mowers. They're chosen for their performance and reliability to bring an immaculate finish to any course.

Take the RANSOMES TRIPLEX 171 triple greens mower for example. It can mow, verticut and spike to provide the best playing surface. Interchangeability of units is quick and simple without the use of tools. With instant forward and reverse manoeuvring couldn't be easier. And for the finest cutting there is also the AUTO CERTES, renowned throughout the world for its championship finish.

That's why before most British championships, RANSOMES go round first.

Ransomes Sims & Jefferies PLC Nacton Works, Ipswich, IP3 9QG.
Telephone: Ipswich (0473) 270000 Telex: 98174 Fax: 270030.



YOU'LL FIND US IN ALL THE BEST KEPT PLACES



OUT ON THE COURSE



with Ken McNiven.

EFFINGHAM Golf Club lies in the heart of Saxon England – an area of Surrey that is a feast of rural beauty. There is scarcely a village without some picturesque association with the past.

A fine Georgian clubhouse lends an air of dignity and splendour to the character of the golf course. Like most others in the downland belt, Effingham is built on chalk, the finest base after sand for a golf course.

The course opened in 1927 and is a tribute to the architectural genius of Harry S. Colt. There are no drainage problems on the beautiful downland turf. The gently undulating terrain and fairways of ample width help inspire a golfer's confidence, its hazards are generally visible and, in keeping with modern requirements, its large greens are fair and interesting to play to, but provocatively subtle to putt on.

Course manager Ken McNiven (see footnote) is an engaging personality with an infectious sense of humour. Among his special qualifications in greenkeeping, he has a wealth of experience on different kinds of golf course.

"When I left school, I went into greenkeeping at Williamwood Golf Club, Glasgow, which was a heavy clay, parkland course not too easy to manage, but it was extremely good experience for me. From there, I moved to Ralston

Golf Club for a short spell before taking up my first head greenkeeper's appointment at Old Ranfurly Golf Club, Bridge of Weir, a moorland course. Later, I went to West Kilbride, a links.

"As I was relatively new to links type management, I was fortunate to meet an old greenkeeper, John Wilson, who had worked on the course for over 50 years and we spent many hours discussing the problems involved. His knowledge and shrewd advice was invaluable to me and, as a result, we resorted to using sand from the dunes and started collecting the seaweed on the doorstep, which was plentiful and free. This was stockpiled, shredded and mixed to make an excellent compost, which was used on the links in tandem with a regular slitting programme and it dramatically improved the quality of turf.

"I have two sons and a daughter and the boys have followed in my footsteps. The oldest, Graham, started at Effingham with me and did a four-year training programme, involving a three-year greenkeeping course and a 4th year in management at Elmwood College, Cupar. He has since moved to Sunningdale to broaden his experience. My youngest son, Ian, has also been at Sunningdale for the past two years. Daughter Kirsty, 14, is a great help to my wife Linda in the house.

"My golf handicap is five, but my main sport has always been shinty which I have played almost since the day I started to walk. I was born in Tighnabruaich, Argyleshire, a great stronghold of

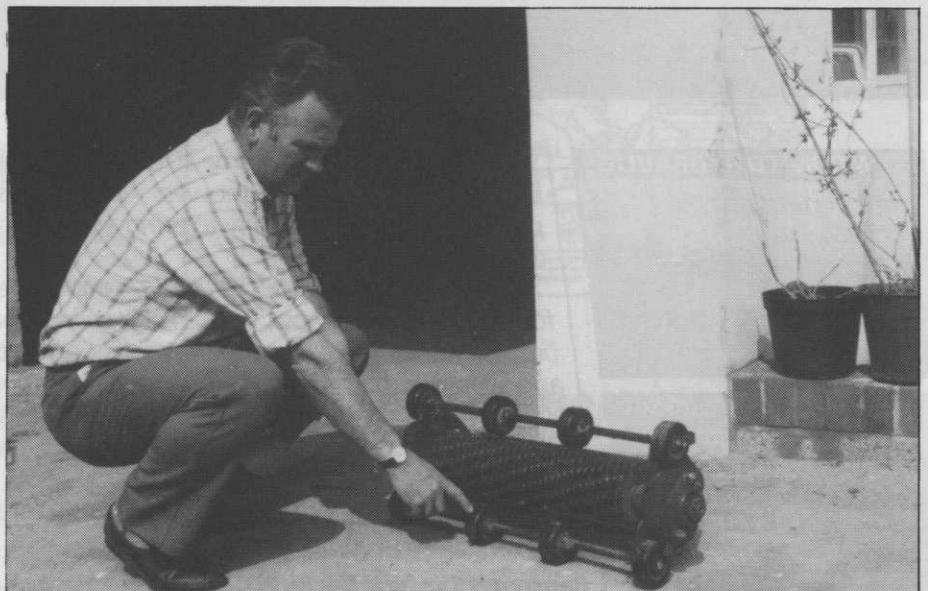
the game. It became a way of life for me – in fact, I was playing until the very day I moved to Effingham. I have represented Scotland on a number of occasions, playing in Dublin and Cork, as well as other international games – it's a fine sport.

"My move to Effingham in 1981 presented me with an entirely different situation from the heavy clay, semi-moorland and links courses that I was familiar with. Being on the chalk downs, I had to contend with another type of terrain and problems, so it took a little time to adapt to the new surroundings. That is one of the exciting aspects of our profession, it is never dull.

"The club is run on business lines. There is Effingham Golf Club and Effingham Limited, both of which are run by one board of management and I am totally responsible to the general manager, John Norman, a fine administrator with whom I have an excellent working relationship. His long experience with the club is a great help to me.

"A general budgeting system allows us to have the best of machinery and a staff of six greenkeepers to look after 18 holes set in 300 acres. Of this, 100 acres in the middle of the course is arable farming land.

"We have one of the first automatic irrigation systems ever installed by Watermation. This was updated about six years ago. As we're on chalk, the fairways don't dry out very easily – deep roots tend to draw a lot of moisture from the chalk. In winter, the turf is always clean



Ken shows the extra roller wheels he fitted to this verti-cut unit, preventing the scalping of high spots on greens.

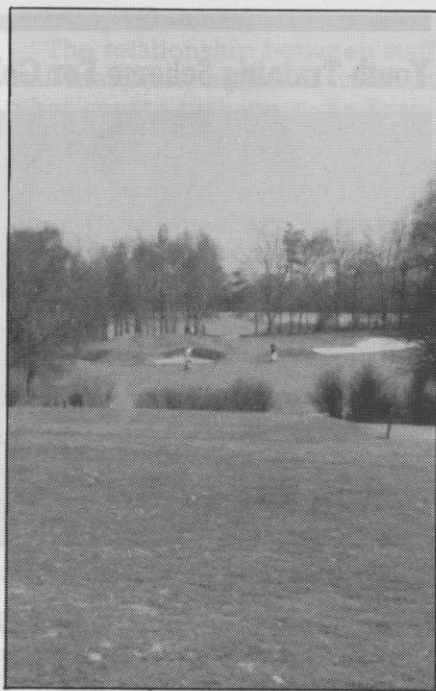
and dry and a joy to play golf on.

"Among my responsibilities is the upkeep of four tennis courts, two of which are grass and two hard surfaces. With no previous experience of looking after such sporting facilities, I had to look around for someone to give me a few wrinkles on the subject. I was fortunate enough to meet up with Jim Thorn, head groundsman at Wimbledon, and he gave me a lot of sensible advice and good information about all kinds of tennis court. This is a different kind of management from golf green-keeping.

"On the chalk downs, our main problem is the weeds and worms - if you don't keep the worm population under control, it means a lot of weeds, particularly daisies. I have also inherited a lot of speedwell, which takes time and considerable expense to get rid of as it spreads so rapidly.

"Our maintenance programme for weed spraying has to be done with a certain amount of care and caution. We have a great many wild orchids and flowers in certain areas that have to be preserved at all costs. A few of the copses get cut in the winter with a rotary, after which they are left to flower for the rest of the period. The trees on the course are mostly beech apart from a few ornamentals that have been planted by the club over the years.

"Effingham has formulated a long-term policy for the good of the course, so that the green-keeping staff can work within certain guidelines and plan the work programme accordingly. Many clubs don't have long term policy documents and work plans chop and change at the whims of every new committee. This is not good



Effingham GC.

for the course and it often disorients the staff to a point where they lose interest in the work.

"With regard to course upkeep, we slit the greens fairly regularly and topdress from February through to October on a monthly basis with a sand based compost - about 1½lb per sq yd. We spray the greens occasionally in the winter with sulphate of iron. This gives them a good colour and keeps fungal disease at bay. In the early spring, sulphate of ammonia is added to stimulate gentle vigour.

"I have always been a firm believer in the use of sulphate of iron. Its a good remedy for many things and is applied at 1lb per 200 sq yds to the greens. The best way is to spray it on and mix it with a wetting agent. It needs

very hot water to liquify the material after which it should be strained through a nylon stocking before using.

"I have been seen sneaking away from the rear of the clubhouse clutching a pair of ladies' tights, which makes me feel guilty, but it's all for a good cause!

"We try to maintain an even standard of upkeep and don't bring the course up to a peak for any one competition. If you take things to a peak, then you obviously must have troughs. We strive to keep the same standards every day, so we treat all golfers the same - one golf event is not necessarily more important than another.

"We have three acres of putting surface, which take just over three hours to mow with a TORO 300. We also have two GM3s; one is used for verti-cutting and the other, a back-up machine, does tees and surrounds. The fairways are cut three times a week with a set of Lloyds Leda Gang units even though there might not be a lot of growth. This always keeps them trim and tidy, in keeping with club policy."

Ken McNiven is popular among his contemporaries in the Surrey area and his enthusiasm to promote the cause of greenkeeping deserves some acclaim. His organising ability recently brought together greenkeepers and club officials for an enjoyable day's golf and dinner at Walton Heath. It was a convivial day for the 150 who took part.

● *Since John Campbell conducted the interview, Ken McNiven has accepted a post at Old Thorns.*

are you concerned with root development

Slow hard growth, a thick sward, drought resistance, soil conditioning, grass seed germination, tree planting, fine turf, land reclamation, indoor landscaping, a balanced management system, destructured soils, deep green colour, improving your soil ...

... then Farmura Environmental Products can help your management programme

Ask for details of the Farmura range of products or write for colour brochure to:

Farmura Environmental Products, Stone Hill, Egerton, Ashford, Kent. TN27 9DU. Tel: Egerton (023376) 241

farmura

ENVIRONMENTAL PRODUCTS

Caring for the environment naturally!



EDUCATION CORNER...

SISIS, in association with May & Baker and their distributors E.T. Breakwell and Cameron Irrigation, have announced an autumn series of seminar/demonstrations.

At each, turf management techniques and machinery for bowling greens will be shown, followed by lectures with slides covering disease recognition and necessary chemical applications. There will also be advice and information from irrigation specialists.

Dates and venues are Tuesday September 29, Hatfield Lawn Tennis and Bowls Club, Herts; Monday October 5, Blaby Bowls Club, Leicester; October 6, City and County Bowls Club, Oxford; October 7, Potterton International Sports Club, Warwick; October 8, West Midlands Travel Sports and Social Club, Kings Heath, Birmingham.

Admission by invitation only from SISIS Equipment (Macclesfield), Hulley Road, Macclesfield, Cheshire. Tel: 0625 26363.

Youth Training Scheme For Golf Greenkeepers



Dominic received an engraved tankard from J. Hargreaves of SISIS.

A scheme was set up in June 1986 to provide specialist training for 16 and 17-year-olds seeking a career in golf greenkeeping.

Close liaison between the De Vere Hotel group, managing agents and owners of The Belfry, and the Warwickshire College of Agriculture, who provide job training on a residential basis, has provided the basis of a successful first year's training.

The initial year of the scheme has been spent following the City and Guilds phase one course in horticulture and, during this time, a strong basis has been placed on greenkeeping and mechanisation. The second year will follow the City and Guilds phase two course in greenkeeping.

On a recent visit to SISIS, top trainee Dominic Moore-Corey (Worcester GC) received an engraved tankard.

Full details of the course can be obtained from the Warwickshire College of Agriculture, Moreton Morrell, near Warwick, Warwickshire.

THE DRIVING RANGE

The ICI range of turf care products has been developed for professionals. Whether your target is turf weeds, insect pests or turf diseases — whether the location is fine turf or outfield, look to the driving range.

SUPER VERDONE* The effective selective herbicide which controls major broad-leaved weeds in any established turf. Three powerful weedkillers give broad spectrum cover, even to speedwell and yellow suckling clover.

GAMMA-COL* turf. Underground pest like leatherjackets and chafer grubs will cause ugly bare patches as they eat grass roots and stems. Gamma-Col turf will kill these pests and remains in the soil to give effective and long term control. The easy to use liquid formulation has contact and fumigant action.

TURF CARE PRODUCTS

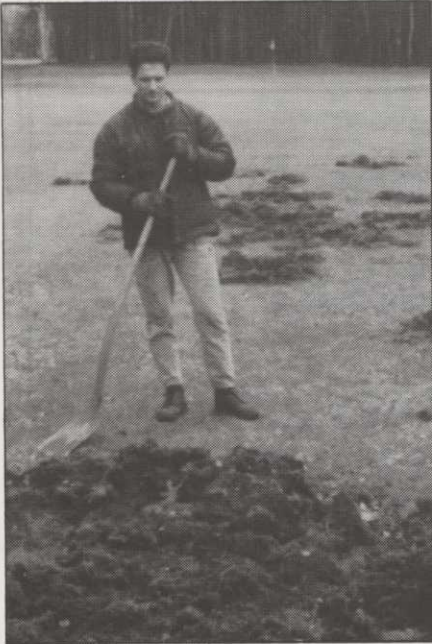


Professional

ICI Professional Products, Woolmead House East, Woolmead Walk, Daconil turf contains chlorothalonil; Tornado contains carbaryl; Super Verdone contains dicamba, 2,4-D and ioxynil; Gamma-Col turf contains gamma HCH.



BOAR DAMAGE CONTINUED...



mission is granted.

"We also experience a great deal of rabbit damage, due to the course being heavily wooded and, as with the boars, permission has to be obtained before any

shooting can be done.

"The relationship between staff and members here will interest other course managers. As Bruggen is an RAF course, the majority of members are only here for about three years and there are a lot of greens fee players. There are also a great number of competitions and society meetings from April to November, both weekdays and weekends.

"The course is relatively busy, so a lot of the work is done while play is going on and some players seem unreasonably impatient when required to wait a few minutes before playing their shots.

"There also seems to be a lack of willingness to consider plans for the course any further ahead than the present time, possibly as a result of short-term membership."

Simon enjoys a good working relationship with colleagues, a Dutchman and his son. However, there are language problems. "It is difficult for me to learn the theoretical side of greenkeeping and also impossible for me to attend college for the same reason."

Simon says he has gained much

more enjoyment from greenkeeping than he would have ever imagined possible and after another year at Bruggen, he intends to look for a position at a course in the UK.

● To keep pace with the ever-changing face of our industry, Greenkeeper is spreading its wings to take on a more international appeal.

It is already widely read in continental Europe, in America, the Far East and Australia and this report by Simon Taylor is the first in a series that will highlight courses, problems and peculiar traits all over the greenkeeping globe.

Future articles will cover such diverse locations as Greece; Zimbabwe, where importation problems for spares and chemicals are a major headache and make for some interesting improvisations; the Algarve, now ripe with golf course and property development; and the States, when we will compare the lifestyle and working conditions of an American superintendent and his UK counterpart.

NG RANGE.

TORNADO* Based on carbaryl, Tornado gives economical, effective and long-lasting control of casting worms. Because it works by contact and ingestion it gives quick results and good residual activity. The special liquid formulation is easy to mix and simple to apply. After application it leaves no unpleasant odour – so as soon as the grass is dry, play can continue.

DACONIL[†] turf. A broad spectrum fungicide for the prevention and control of major turf diseases. Its unique multi-site action and chemical composition means that even after years of successful use it continues to be effective – even sequential spraying programmes create no problems. Daconil turf has dependable and consistent activity at any time of year.



BANG ON TARGET!
Products

Farnham, Surrey GU9 7UB. Tel: (0252) 724525
Read the label before you buy: Use pesticides safely.



KYLE AND CARRICK DISTRICT COUNCIL

AYRSHIRE

A head greenkeeper is required for the three prestigious municipal links golf courses at Troon.

The successful applicant will be responsible to the council's Golf Courses Superintendent, and must have a high degree of competence and experience in the theory and practice of golf course management. The ability to lead and motivate staff, organise and maintain machinery, must be combined with a pleasant manner towards the public.

Temporary housing may be arranged if required.

Applications, giving full C/V and present salary should be sent to - **Director of Parks and Recreation, Kyle and Carrick District Council, 30 Miller Road, Ayr, Scotland.**

Closing date for applications is Monday, 3rd August 1987.

SUNNINGDALE GOLF CLUB

require a

DEPUTY HEAD GREENKEEPER

Only persons of proven ability need apply for this responsible position. Accommodation is available as part of a generous remuneration package. *Applications in writing with a full C.V. to:-*

**Jack McMillan,
Head Greenkeeper
Sunningdale Golf Club,
Ridgemount Road,
Sunningdale,
Ascot,
Berks.**



GOLF & COUNTRY CLUB

invites applications for the post of

HEAD GREENKEEPER

Slaley Hall is a new 18 hole championship golf course presently nearing completion.

The applicant must be highly experienced in all aspects of golf course maintenance, greenkeeping and have proven ability in staff management.

Salary by negotiation.

Applications in writing giving full details of age and experience to:-

**The Course Manager,
Slaley Hall Golf & Country Club,
Slaley,
Slaley by Hexham,
Northumberland. NE47 0BX
Tel Mr. Milbourne 043473 543**



Brickendon Grange Golf and Country Club

requires an

ASSISTANT GREENKEEPER

Must have experience in all aspects of golf course maintenance, and use of modern machinery. Salary negotiable. Accommodation available.

Apply to:-

**Mr. N. Martin,
The Secretary/Manager,
Brickendon Grange Golf and Country Club,
Brickendon, Nr. Hertford,
HERTS. SG13 8PD
Tel:- Bayford 258**

BADGEMORE PARK GOLF CLUB

1st ASSISTANT GREENKEEPER

Required immediately for 18 hole course. Applicants should be fully conversant with all aspects of greenkeeping, including machinery maintenance, watering systems etc. Accommodation available. Salary negotiable according to experience. *Apply in writing to:-*

**The Secretary,
Badgemore Park Golf Club,
Henley-on-Thames,
Oxon. RG9 4NR
Tel: Henley 572206**



The Belfry

Applications are invited for the post of:-

ASSISTANT HEAD GREENKEEPER

Technically qualified in all aspects of greenkeeping. Knowledge of 'Toro' irrigation system an advantage. Must be excellent in man management and be able to keep records and reports. Capable of using all types of modern turf equipment.

Approx. age range:- 25 - 35 yrs.

Excellent salary. Live out.

Apply in writing to:-

Brian Cash,
Director/Chief Executive,
The Belfry,
Wishaw,
North Warwickshire.
B76 9PR



Wentworth Club

Vacancy for two

ASSISTANT GREENKEEPERS

Applicants will have experience in all aspects of course maintenance and in the use of modern turf care equipment.

The club is able to offer outstanding prospects for the suitable applicants, due to its development plans.

Married accommodation is available, salary commensurate with experience.

Membership of the BIGGA an advantage.

Apply in writing with full C.V. to:-

K.N.Munt,
Course Manager,
Wentworth Club Ltd.,
Wentworth Drive,
Virginia Water,
Surrey.
GU25 4LS



Milltown Golf Club Dublin

require a

HEAD GREENKEEPER

The successful applicant will be fully experienced in all aspects of modern greenkeeping and machinery maintenance.

Experience of staff supervision desirable.


This well established course is situated four miles from Dublin.

Salary is negotiable, but will be attractive and commensurate with this important position. Housing is not available.

Written applications with full details of age, experience and qualifications etc. to:-

The Secretary/Manager
Milltown Golf Club,
Lower Churchtown Road,
Dublin 14

JACOBSEN®



Full details of the range from the company's UK division at Unit 12, N. Lynn Industrial Estate, Bergen Way, King's Lynn, Norfolk PE30 2JG. Tel: 0553 763333.

Greens King Team...The Best in the Business