

JANUARY/FEBRUARY 1987

# Greenkeeper



● **OUT ON THE COURSE VISITS  
MINCHINHAMPTON (PICTURED)**

● **NEW PESTICIDE LAWS EXPLAINED**

● **JACK McMILLAN ON AERATION**

**PLUS ... ALL OUR REGULAR FEATURES**

**SPECIAL  
ANNOUNCEMENT**



**The all year all turf treatment**

**New Distribution Arrangements For SAI LONGLIFE TURF FOODS**

*The LONGLIFE range is now available from:*

- |                                    |  |  |
|------------------------------------|--|--|
| ● Chipman<br>Horsham<br>0403 60341 | ● Chipman<br>Harrogate<br>0423 68658       | ● Parker & Sons (Turf Management)<br>Worcester Park<br>01-337 7791 |
| ● Chipman<br>Derby<br>0332 364271  | ● Wm K McNair<br>Edinburgh<br>031-669 2260 |  |

*And the following ICI Professional Products Distributors:*

- |  |   |
|--|---|
| Stewart & Co Seedsmen<br>Dalkeith<br>031-663 6617              | ● Richard Aitken (Seedsmen)<br>Glasgow<br>041-440 0033      |
| ● Fargro<br>Littlehampton<br>0903 721591                       | ● Borax Consolidated<br>Chessington<br>01-397 5141          |
| ● Collier Turf Care (Distributors)<br>Norwich<br>0603 613531/2 | ● Maxwell Hart<br>Wokingham<br>0734 785655                  |
| ● Brown & Sons Seeds<br>Bristol<br>0272 736831                 | ● Supaturf Products<br>Peterborough<br>0733 68384           |
| ● Joseph Bentley<br>Barrow on Humber<br>0469 30501             | ● E T Breakwell<br>Solihull<br>021-744 4477                 |
| ● Kilgerm Chemicals<br>Ossett<br>0924 277631                   | ● Kenneth Wilson (Horticulture)<br>Wetherby<br>0937 845 845 |
| ● Monro Horticulture<br>Aylesford<br>0622 77373                | ● Monro Horticulture<br>Burscough<br>0704 895066            |
| ● Monro Horticulture<br>Penzance<br>0736 710304                | ● Monro Horticulture<br>Chichester<br>0243 784263           |



*For further information, contact Scottish Agricultural Industries on Livingston (0506) 39281*



# This issue

JAN/FEB 1987

**STOP THE SILLINESS!** 5  
Says Jim Arthur

**OUT ON THE COURSE** 6

Minchinhampton Golf Club's Laurence Pithie talks to John Campbell, who also penned this sketch



**NEWS & VIEWS** 12

**USING WHAT COMES NATURALLY** 14  
The Elie club has discovered something special down beside the sea

**PESTICIDE LEGISLATION IN GREENKEEPING** 18  
Everything you should know about this important subject

**BARRUS AND BUNTON GET TOGETHER** 19  
Two famous names join forces

## BIGGA UPDATE...

At the meeting of the board of management held in York on January 13, it was agreed that a short report should be circulated to members with an accompanying letter from the chairman.

### ● Appointment of General Administrator

As it was not finally known until late last year that a single association of greenkeepers would be formed, it was not possible to take any action until December to engage a general administrator. At the December board of management meeting, consultants were engaged to obtain a short-list of applicants and, at the meeting held in January, a job specification and advertisement were approved. The ad has subsequently appeared in the January/February issue of *Amateur Golf* and appears on page 31 of this *Greenkeeper*. It has also been run in other selected publications.

### ● Office Location

The BIGGA office is to be located at the Sports Turf Research Institute at Bingley and the general administrator's first responsibility will be to set up that office and appoint a secretary. Until this time, the Sports Turf Research Institute is assisting the association. However, until the association has its own employees, members are requested *not* to communicate with the STRI, but with regional board of management representatives.

### ● Association Sections

The new association's constitution provides that association regions be divided into areas. It is likely that they will be similar to the old sections. Board of management representatives have been asked to report upon this issue at a meeting to be held on March 2. It is being recommended that all section funds shall, subject to the approval of those sections, be handed over to the constituted new area.

### ● Annual Subscriptions

As stated in the letter from the chairman, subscriptions will not be demanded until the association has set up its own office.

**AERATION IS NOT A PASSING FAD BUT NOW A CONSTANT NECESSITY** 20

Jack McMillan, 40 years a greenkeeper, dwells on a modern-day dilemma

**NOTEBOOK** 24

**GOLF COURSES - THEIR POTENTIAL AND ARCHITECTURE** 29

Eddie Park continues to detail the ideal library

**APPOINTMENTS** 31

If you can't find that special job in *Greenkeeper*, where can you? There are 16 vacancies in this issue.

**BUYERS' GUIDE** 35

**Publisher:** Fore Golf Publications Ltd

**Managing Director:** Michael Coffey

**Editor:** Robin Stewart

**Contributors:** Jim Arthur, John Campbell, David Jones, Jack McMillan, Eddie Park, Donald Steel, Peter Wisbey and Walter Woods

All advertising matter, editorial copy and correspondence should be sent to: *Greenkeeper*, 121-123 High Street, Dovercourt, Harwich, Essex CO12 3AP. Tel: 0255 507526

Subscription rates:

UK—£18 USA—\$45 Continent—£30 Eire—IR £23

*Greenkeeper* is published ten times a year. Printed in England by J.B. Offset, Marks Tey, Colchester, Essex.

Copyright: Fore Golf Publications Ltd 1987

### ● National Annual Golf Competition and Greenkeepers' Conference

A golf competition will be organised as previously - further details at a later date. The conference, to be held at Redwood Lodge in April, was to have been the annual conference of EIGGA. This has been postponed. A one-day seminar will take place at the Mere Golf and Country Club on Thursday March 12, organised by the north-west branch of the BIGGA.

### ● Association Magazine

The consultants advising the association on the appointment of a general administrator are also preparing a tender document for submission to those interested in publishing the association's magazine and tenders will be invited.

### ● In Conclusion

It would appear that the total membership will be over 2,000. The precise number will not be known until all former trade members have been identified and deleted from the list of the greenkeeper membership.

### ● Chairman's Message

"I feel honoured to be elected chairman of our newly formed association," Walter Woods said.

"It has been two long years of steering committee meetings. Sacrifices had to be made, but these were unselfishly overcome, with our thoughts set firmly on the future. The new management committee brings together a group of enthusiastic members with one common ambition - to improve the status of the golf course greenkeeper.

"Our first objective is to coordinate the association's framework, embracing education, finance, communications and any future developments. No major decisions will be made without formal proposal to the membership.

"Over the next few years, we will succeed, but it will take effort and dedication similar to that provided by our ancestors. It took wisdom and foresight to show us why we were wrong to be divided. Together, we can move forward to a more rewarding future.

"Finally, I would like to take this opportunity to thank the members of the management committee for electing me chairman and also the Royal and Ancient Golf Club and the English Golf Union for their valuable assistance."



# WHAT DO YOU WANT?



## The Mini or the Rolls?

They're both unique in their own way. And they both offer real value for money. The trouble is, everyone wants luxury, but most of us can't afford a Rolls.

The new **ORGANICROM** range of fine turf organic fertilisers is unique too! But everyone *can* afford them. And the result is true luxury on *your* greens. You'll be surprised how much you get for your money.

We call them **ORGANICROM** because the granule itself is a highly nutritious form of organic matter, carefully manufactured from top quality animal waste. So, you don't just feed your greens, you put back valuable organic matter every time you fertilise with **ORGANICROM**.

Lush winter growth may lead to disease problems, so the **ORGANICROM** range of organic fertilisers are specially designed for spring application. They contain a unique combination of conventional and slow-release fertilisers, providing 'phased' release over an extended period — you feed your grass as it needs it.

The fertiliser ratios with **ORGANICROM** are based on the latest research, (which demonstrates that excess phosphate encourages annual meadow grass and leads to increased disease susceptibility).

So we give you the choice. Three **ORGANICROM** fertilisers contain no phosphate, but if you do have a phosphate deficiency, we have an **ORGANICROM** tailored to meet your special needs.

And finally, **ORGANICROM** contains iron to provide a rapid green-up effect, strengthen your turf and reduce wear, tear and disease.

For further information on how to buy luxury at a mini price contact:

**What more could you want?  
All the rest offer you a mini!**



# TRIDENT

THE ULTIMATE IN TURF CARE PRODUCTS



# STOP THE SILLINESS!

GREENKEEPING problems seem to crop up on a regular pattern, some seasonal and some topical, judging by my telephone calls. The commonest chronic worry from now on until spring is the concern, to put it mildly, about moss on greens. This always seems to be raised by the keen lawn owner – and if there is one man I dread (much more than farmers who can be educated), it is the lawn owner who extols lush green turf and wants the greens on his course to look like his lawn. It is pointless telling him that his lawn would soon look a sorry mess if it had to withstand the amount of traffic to which the normal green is subjected.

By Jim Arthur

Concern that moss will kill the grass is baseless. There is an old greenkeeping adage to the effect that if greens do not show a little moss in winter, then they will inevitably be too lush and soft all summer. Naturally, as soil 'fertility' drops off in winter with the cessation of micro-organism activity in the soil as temperatures drop, that critical level which suits the finer grasses, but is too low for the unsuitable ones to survive, may drop temporarily to a level only just enough for the better grasses and moss can then invade.

Needless to say, such invasion is worst where there is least traffic, e.g. on the backs of greens and the areas furthest from the next tee, and also on ridges that are penalised by closer mowing, etc. One dodge to get rid of moss in the old days was to cut the hole in the middle of a mossy area – it very soon disappeared!

As 'fertility' rises naturally in the spring, the moss will go equally naturally, though it can be speeded on its way by the application of a light ammonia and iron dressing in March. Try and kill it off with (expensive) moss killers in the autumn and inevitably we are left with bare areas that can only recolonise with more moss.

In the growing season, savage attacks against moss all too often merely result in the scars recolonising with annual meadow grass. Moss will never kill grass in the accepted sense of the term. It is easily controlled by creating conditions that suit the finer grasses and less so the moss, but great care is needed not to overdo the 'improvement' which would replace moss with annual meadow grass.

A great deal of unnecessary worry could be avoided if a little moss were accepted as normal and a good sign that soil conditions are about right. It also needs stating that very little moss is caused by bad drainage or by compaction – as these have to be so marked that other problems loom first and demand correction. Nothing exasperates me more than the worried committee man who goes on and on about the moss, but admits that the greens are putting perfectly. Yet they never see annual

*Continued on page 15...*

**FOR SALE**  
**TORO SANDPRO 14**  
ELAPSED TIME 543 HOURS  
GOOD CONDITION  
PRICE £2,440 INC VAT

Burrows (GM) Ltd., Spring Slade Works,  
Cannock Road, Stafford.  
Telephone Stafford STD 0785 661131

**BLACK FEN**  
**TOPSOIL**  
Tel: G. J. Moyses  
**(0733) 69447**

**Sportsground Services**  
**Scotland**

Verti-Drain for hire  
Most areas considered  
Very competitive rates

Tel: Maybole (0655) 83251

**Spray Equipment**  
**for Compact**  
**Mini Tractors**

Spray a 10ft width or, set vertically, negotiate green-house aisles or orchards. Suitable for use with all tractors, connecting to PTO. For full details contact:



**Frank Driver**  
**Limited**

206 Elgar Road, Reading, Berkshire. Tel: (0734) 752666

"EVER since school days in Edinburgh, the job of greenkeeping appealed to me - I used to help out on a local course where I was a junior member during the weekends and holidays," Laurence Pithie said. "Although I was a keen low-handicap golfer, I did not see myself joining the professional ranks. My ambition was a career in greenkeeping, as long as I could attend college and study the theory, as well as the practical side, of golf-course management.

"After a three-year apprenticeship at Bruntsfield Links in Edinburgh, I moved across town to Mortonhall GC for another three years, where I was soon promoted to first assistant. Both these courses were extensively remodelled, so I gained a great deal of construction experience at an early stage.

"In 1976, I took the plunge and headed south to Sandiway GC in Cheshire as head greenkeeper. Sandiway is a semi heath/woodland course on light sandy soil. I spent five years there and made many friends in the north-west before moving further south to Minchinhampton where there are two 18-hole courses. My wife Sandra and children Jennifer and Alistair have settled well into the rural community. We enjoy life in the Cotswolds and are fortunate to live and work in such a beautiful part of the country.

"The Minchinhampton club was formed in 1889. Golf was played on part of the local common, which became known as the Old Course. Golf had been played there many years before and the area is, in fact, steeped in

# OUT ON THE COURSE

**John Campbell travelled to Minchinhampton GC in Gloucestershire to meet Laurence Pithie, a course manager with some rather uncommon problems...**

history, Charles I having stayed at a local inn. The common now comes under the auspices of the National Trust, so I have to work within regulations imposed by the Nature Conservancy Council.

"The area is deemed as a site of special scientific interest. Added to that, I also have to deal with a commons committee representing the local people. Their ancient charter allows them to graze animals on the common for a nominal fee.

"The main problem on the Old Course is dealing with the depredation caused by the animals, of which there are approximately 450 grazing on the common. Cattle damage is usually inflicted when they bed down for the night on the greens and foul up the putting surfaces. The 50 or so horses can be more of a problem and often give us a few headaches."

Looking after a golf course on commonland is not an easy job (as I recall from my early experiences at Westward Ho!), so I asked Laurence if he had any advice for others with similar responsibilities.

"We are allowed to 'fence-off' up to six greens at any one time in a given year for repair and renovation. The fencing is usually left around these greens for a period afterwards to permit recuperation. This is a big help.

"The introduction of short flagsticks, about one foot high, helped. Normal length pins were always a target for the animals, being the only prominent objects on open expanses of windswept common. But having the short sticks now, they cannot rub their flanks against them, so they don't have the same attraction - this has reduced a lot of the damage.

"Routine control treatments, such as selective weedkilling and worm control, carried out on most courses are virtually out of the question. These chemicals can only be applied when no animals are grazing, between April 1 and May 13. In these parts, the weather is generally cold and dry so early in the season, therefore none of these treatments would really be practical. In addition, there is no irrigation on any part of the course."

The course is well drained, having a few inches of soil overlying limestone rock. Old quarries and gulleys where stone was once removed, along with old ditches and mounds dating back centuries, form the natural features along with a few clumps of hawthorn hedging. Grass cover is a varied mixture of species, but mainly fescue. The greens are predominantly fescue, with root depth of at least six inches. This is in spite of the fact that they receive virtually no aeration, no fertiliser, no water and next to no top-dressing. In fact, almost nothing except a 20in mower plus what falls from the sky. Their quality is superb.

"There is a head greenkeeper and assistant employed full time on the Old Course, but there are occasions when the strength is supplemented by bringing in staff from the New Course for competitions or special jobs. Greens are cut with pedestrian mowers, fairways maintained with Ransomes trailed triple gang units



Horses for one of Minchinhampton's courses...

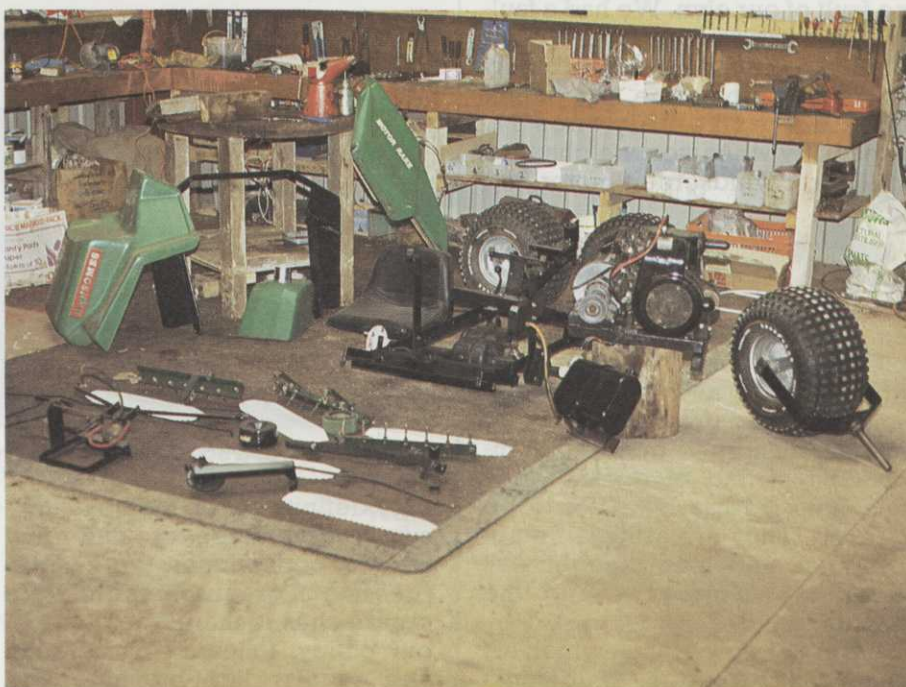


and tees, aprons and surrounds are mowed with a Toro 70 machine. There are no bunkers to worry about and the rough is kept very short by grazing animals."

At the beginning of the 1970s, the problems of playing golf on the Old Course were gradually mounting as the number of people using the common for other recreational purposes increased. Weekend competitions became intolerable and, indeed, dangerous with the public roaming around oblivious of the risk to life and limb. This finally prompted club members to look around for a suitable piece of land to build another golf course.

Some 135 areas of farmland were eventually purchased on the other side of Minchinhampton village, three miles from the Old Course and next to Gatcombe Park, home of HRH Princess Anne. The New Course was designed by Fred Hawtree and constructed by a local firm of contractors with no experience of golf courses and also on a limited budget. It was opened for play in 1975 and then suffered the following year's severe drought. From a somewhat troubled start, it is now a thriving club with a full membership of around 700. A new clubhouse created from an old Cotswold tythe barn includes an indoor alley for skittles, a popular West Country game.

"There are five staff including myself on the New Course, with my deputy doubling as mechanic. We have first-class facilities, which include a large purpose-built maintenance building, a soil shed that holds



The club boasts a well-equipped workshop.

160 tons of sand, soil and peat, etc, and also five outside concrete storage bays. There is an automatic irrigation system to the greens and a manual system for the tees, which was upgraded in 1984. We have recently acquired our own water supply, via a 300 foot borehole, so we expect a substantial saving in future water charges.

"We are fully mechanised with a good range of equipment, including three tractors, two Cushmans, two triplex mowers, three motor triples, hydraulic mounted gangs, motor rake and shredder, etc.

"We usually have three greens meetings a year, which I attend along with other members of the

greens committee. Any reports, plans, recommendations, etc, are submitted for discussion at this point and, once agreed, a plan of action is implemented immediately. This system has worked very well and I am fortunate to have the full backing of an enthusiastic committee behind the agreed policies. I am in regular contact with the chairman and liaise closely with the secretary, who has been a great help."

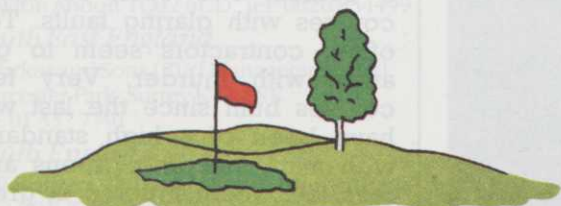
When asked about new machinery, he said: "as far as performance is concerned, I don't think I am qualified to comment, but I do have some reservations regarding certain machinery. Quite recently, we spent nearly £1,000 on one machine, through

*We've built more courses than everyone else put together...  
for new constructions, alterations or improvements on your course...*

# GOLF LANDSCAPES LTD.

ASHWELLS ROAD  
BENTLEY, BRENTWOOD  
ESSEX. CM15 9SR

Telephone: (0277) 73720  
Telex: 995215 GOLF LG



*The proven experience in the field  
for construction, drainage and irrigation*



no fault of our own. We had a faulty hydrostatic pump, which even baffled the local distributor. Spare parts for some equipment can be extremely costly, especially when you are charged £145 for a windscreen motor and arm.

"The majority of my time is spent on the New Course, since there is a well-established routine on the common. My main problems on the New Course stem from design and construction, soil depth and grass species. The overall design is good, but individual styling of greens, tees and bunkers has left a lot to be desired. They are artificial in appearance and little thought was given to maintenance and the flow of traffic.

"Another problem, which is somewhat related, is the distinct lack of soil covering the limestone rock. As the volume of play has increased, the amount of wear on certain areas around the greens has left limited grass cover, which is even non-existent in some places. The exposed nature of a 500 foot plateau does not help either, since we are particularly prone to cold east winds and summer drought.

"Perhaps the greatest difficulty concerns the Ryegrass mixture with which the course was sown. Unfortunately, it was fashionable in the early 1970s for misguided advisors who totally ignored the indigenous sward content growing naturally on the common three miles away, which provides an ideal playing surface for golf. I cannot understand how we are expected to maintain a good playing surface containing two such opposing grass species.

"Our maintenance year is a



Greenstaff constructed this impressive lake.

very definite seven months intensified greenkeeping and five months construction work. Top-dressing of greens, tees and front approaches is the cornerstone of our policy, followed by aeration and regular light-brushing and verti-cutting, etc. We are now gearing ourselves up to top-dress five fairways each year in an attempt to improve the sward density along with other management techniques.

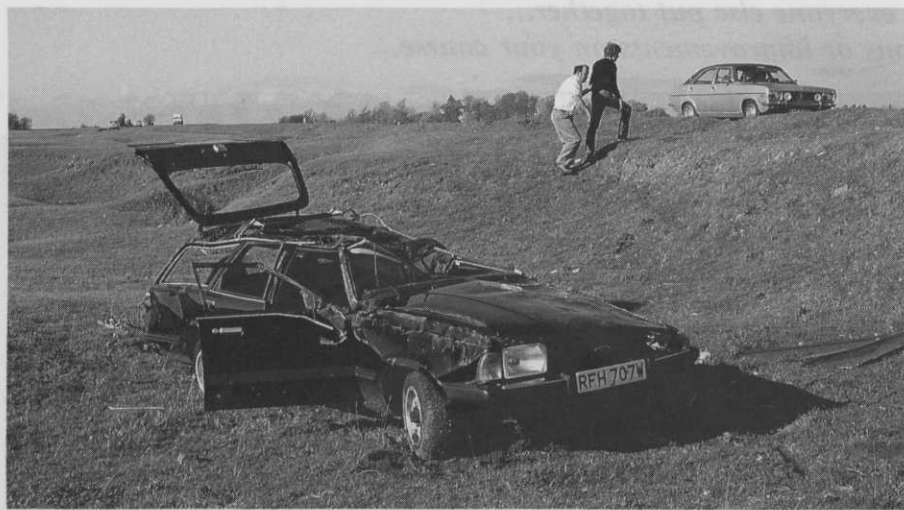
"Perhaps the most interesting period is during winter, even during the arctic-type conditions common to the Cotswolds. Our policy of improvement has been to redesign several bunkers, construct numerous tees and create large mounds, hollows and ridges, etc, in an attempt to break up the landscape and add character to the course. Last year, we constructed a lake and four tees, moving over 20,000 tons of material, mostly rock. All good fun! One problem we still have to solve is what to do with some of the green surrounds. Ideas and plans have been drawn up, so possibly next winter we will make a start."

"I like my men to feel part of the team and treat them as individuals with a contribution to make. When assigning them daily tasks, it is important for all staff to feel involved by discussing any aspects of the work programme and for them to express opinions."

Laurence's advice to young greenkeepers is: "be prepared to take the rough with the smooth and don't get too upset every time you hear someone complain about something on the course, since the majority of these remarks are often trivial. Ill-founded observations from a golfer who has had a bad round is something every greenkeeper has to take in his stride, hence the need for a thick skin and two deaf ears!

"To succeed in the job, you must learn to be observant, have an open mind and, above all, be ambitious and have the courage of your convictions. It's good to visit other courses, find out how they tackle their problems, study other methods of maintenance and compare notes with other experienced greenkeepers. Photographs or slides can also be a big help in forming a reference library.

"I still hold two main personal ambitions. One is to write a book in my later years on golf-course management, after I have accumulated a wealth of experience on a variety of golf courses. The other is to construct a course. I've seen so many courses with glaring faults. Too often, contractors seem to get away with murder. Very few courses built since the last war have been of a high standard, with many needing greens and tees, etc, reconstructed at great cost and inconvenience."



Typical of Laurence's headaches, a wrecked car in the semi-rough!



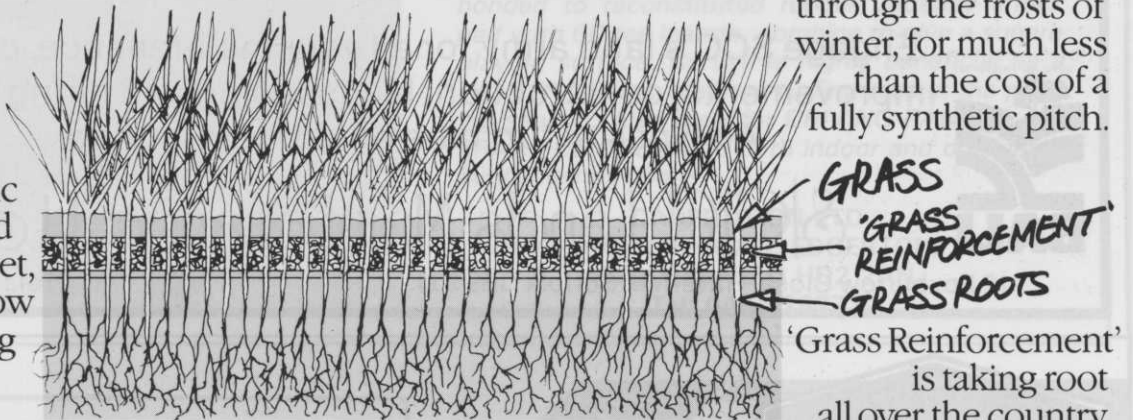
# THE Tough Turf

Playground, park or penalty spot, wherever grass is worn away, that's where you need a little extra help.

Whether you are a groundsman, park officer, landscaper or architect, there are times when turf just isn't tough enough.

Think what a good idea 'Grass Reinforcement' is. It's a synthetic fabric that's as flexible and easy to lay as a carpet, which lets grass grow through it, providing anchorage and protection for the roots. If the blade gets damaged the roots are still there, and with a little reseedling and topdressing, they can produce a sward once more.

You can use it on paths, banks and worn-out walks. You can use it on cliff faces, on riversides and on eroded roadsides. Nearer to home, it will keep your favourite football ground flat, playable (and therefore profitable) through the frosts of winter, for much less than the cost of a fully synthetic pitch.



## **GRASS REINFORCEMENT**

**LETS THE GRASS GROW IN THE MOST HOSTILE AREAS**

'Grass Reinforcement' is taking root all over the country, wherever grass roots are being destroyed to the extent that ground use is affected. Now you know what a good idea it is to reinforce grass.

# **NOTTS SPORT LIMITED**

**We make the ground work better**

'Grass Reinforcement' Suppliers

### *South West England*

D. O. Hunt Ltd, 14 Fairfax Road, Heathfield, Newton Abbott TQ12 6UD. Tel: 0626 834499

### *South East England*

T. Parker and Sons (Turf Management) Ltd, Worcester Park, Surrey KT4 7NF. Tel: 01 337 7791

### *South England*

Roffey Bros Ltd, Throop Road, Bournemouth BH8 0DF. Tel: 0202 523752

### *Scotland*

Stewart and Co. Seedsmen Ltd, Stronghold Works, Mayfield Industrial Estate, Dalkeith EH22 4BZ. Tel: 031 663 6617/8/9 (24 hr)

### *North England*

Rigby Taylor Ltd, Rigby Taylor House, Garside Street, Bolton BL1 4AE. Tel: 0204 389888

### *Northern Ireland*

Greenline Distributors Ltd, Castlewellan Road, Banbridge, Co. Down. Tel: 08206 23861

### *Midlands*

Rigby Taylor Midlands Ltd, Unit 9A, Warwick Industrial Estate, Budbrook Road, Warwick CV34 5XH. Tel: 0926 401444

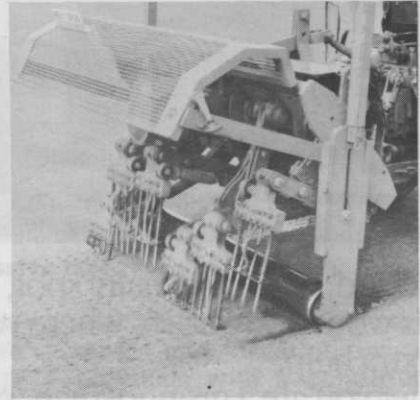
'Grass Reinforcement' Suppliers also supply Notts approved seed and topdress.

# JOIN THE GROWING LIST OF THOSE WHO HAVE USED THE PROFESSIONALS



**MAJOR**

+



**CAPTAIN**

British Association  
Landscape Industries



Engage SCC's land army for all your maintenance, course improvements, construction, landscaping and hiring needs.  
All types of turf care equipment for hire.



**S/C/C Lands Maintenance Ltd**

12 Foxburrow Close, Haverhill, Suffolk CB9 9JJ.

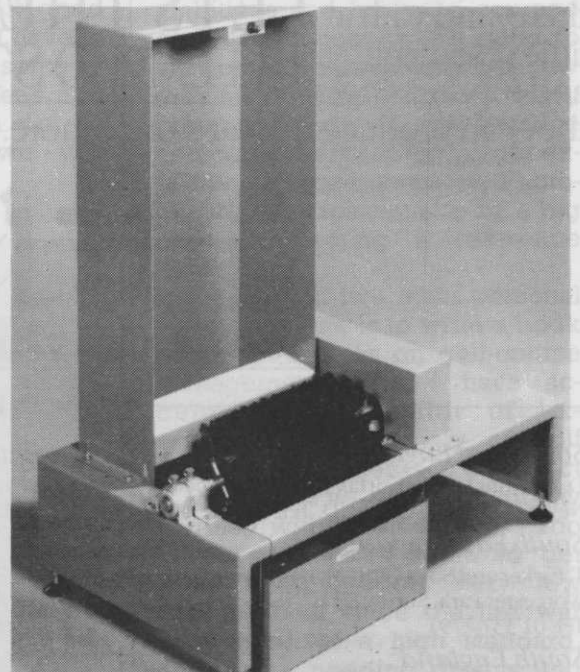
Tel.: Haverhill 62369

## Pattison

**THE NAME for golf course equipment and furniture**



Pictured above: a selection of Pattison accessories. Right: the Brush Master, for removing mud and grass from boots and golf shoes, at £395 (plus VAT).



**Phone 0582 597262 for a catalogue**

H. PATTISSON & CO. LTD., 342, SELBOURNE ROAD, LUTON, BEDS. LU4 8NU

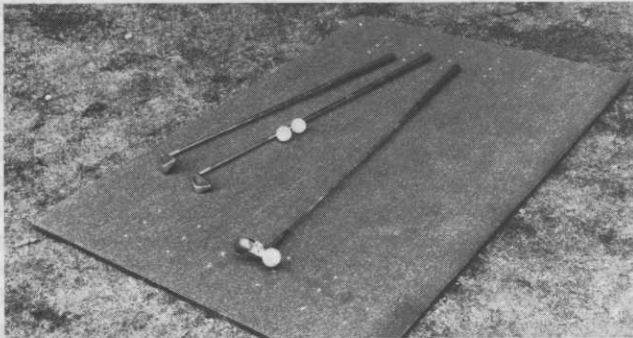
**GOLF COURSE EQUIPMENT AND TURF MAINTENANCE MACHINERY MANUFACTURERS**



# CARPETITION LTD.

THE 'TUFTURF' TEE MAT —  
Like a piece of firm, well sprung fairway

FOR TEE SHOTS



AND FAIRWAY SHOTS



"A British made porous hardwearing all weather tee 1.5m x 1m and 2m x 1m. Synthetic grass, bonded to reconstituted rubber underlay shock pad with 60 tee inserts, combine to give a superb playing surface. Its use is highly beneficial as a WINTER TEE, or when re-turfing tees in the playing season. Also ideal for DRIVING RANGES and PRACTICE GROUNDS both indoor and outdoor." Further details from:-

CARPETITION LTD.,  
6 KAFFIR ROAD, EDGERTON,  
HUDDERSFIELD HD2 2AN.  
Tel: 0484-28777

## "FENDRESS"<sup>®</sup>

THE TRULY NATIONAL TURF DRESSING AS  
SUPPLIED TO MANY CHAMPIONSHIP COURSES

A Superior Top Dressing, using soils with a low clay and silt content, carefully blended with Fenland Peat and Lime Free Silica Sand, shredded and sieved. Ready for immediate application to golf/bowling greens.

Save purchasing expensive equipment, which stands idle for much of the year. Also high labour costs and problems of finding suitable ingredients of constant quality.

BULK DELIVERIES TO ALL PARTS OF THE UK IN 10, 15, 20, 25 TONNE LOADS. CUSTOMERS IN BELFAST, ABERDEEN, PLYMOUTH, EAST ANGLIA, ETC.

PLEASE REMEMBER, THERE IS ONLY ONE TRUE FENDRESS, WHICH IS A REGISTERED TRADEMARK. BEWARE OF IMITATIONS.

Pre-Packed supplies available. Special mixes to your specification prepared. Also, Screened Sedge Peat ("Fenpeat") in bulk. Lime Free Sands, White or Yellow. Screened Loam, etc.

Please telephone T.J. Banks for quotations. You will be surprised by our competitive prices.



Contact: Fen Turf Dressings Ltd., 36 High Street,  
Market Harborough, Leicestershire LE16 7NL.  
Tel: Market Harborough (0858) 64346.

BOOK EARLY  
TO SECURE SPACE  
CLOSING DATE FOR STAND BOOKINGS  
28 FEBRUARY 1987

Have you  
booked your space at  
the Greatest Spring Event  
for the  
Sports and Leisure Industry?

## SOUTHPORT'87

The second  
JOG Sports and Leisure Spring  
Exhibition will take place at  
Victoria Park Southport Merseyside

from  
12th-13th May 1987: 10am till 5pm daily

- \* Ground rental charges from only £4.50m<sup>2</sup>
- \* Extensive demonstration areas available



BOOKING FORMS AND FURTHER INFORMATION  
AVAILABLE FROM:

JOG  
SPORTS & LEISURE  
WORLD TRADE EXHIBITIONS

19-25 CHURCH STREET - THE AGORA - WOLVERTON  
MILTON KEYNES - BUCKINGHAMSHIRE MK12 5LG  
TELEPHONE: MILTON KEYNES (0908) 311856

NEWSFLASH  
ONLY A LIMITED AMOUNT OF STAND SPACE  
NOW REMAINS AVAILABLE FOR ROYAL  
WINDSOR '87 - 15th-17th SEPT. MEMBER  
OF THE TOTAL INFORMATION  
SPACE AND STAND  
RACE COURSE. INFORMATION  
FORMS AVAILABLE  
ON REQUEST.

## Association News Round-Up

The **South Wales** branch is to stage a one-day seminar at Pen-coed College of Agriculture, near Bridgend, Mid-Glamorgan on April 15.

Speakers confirmed are David Jones, course manager at the St Pierre Golf and Country Club, Archie Patterson of Watermaton and Tony Horne, grounds manager of Cardiff Arms Park. A fourth speaker is to be announced.

Please make every effort to attend and support greenkeeper education. Members will receive more details shortly - in the meantime, information can be obtained from me on 0656 771335.

*Raymond Hunt.*

The final golf competitions of last season in **East Anglia** were, as ever, well-supported. The Abridge Golf and Country Club attracted over 50 members to do battle for the Ransomes watch. Phil Staines with 37 points won on a countback from Paul Bertenshaw.

In the 19-28 section, Brian Measor took the top honours with 48 points, while the leading guest was David Chapman. Prizes were presented by John Robson, captain of Gog Magog.

Dipping further back into the archives, Doug Neville retired from the Gogs in July after 34 years service. The staff bought Doug a greenhouse so they could still keep an eye on him! Lyndon Upham is the new boss.

In October, ten EIGGA members played a match at Heath Farm GC - unfortunately, they were trounced. Thanks to Sam Sylvester for organising the event and to the club members for their hospitality.

Back in November, the STRI, led by Dr Peter Hayes, planned a small seminar at Stoke by Nayland and over 140, representing 45 clubs throughout East Anglia, turned up!

Steve Noye is to be congratulated for the professional way he chaired the occasion. The Christmas draw was donated to John Young who, incidentally, has had yet another operation. We wish him and his family a

much better 1987.

I would just like to say thanks to the trade boys for supporting EIGGA. Where would we be without 'Big' Bob Chelsham, Brian Richardson, 'Moycey' and Ken Stern? Answers on a postcard, please! Long live Steve Noye - the lad's been an inspiration to us all.

Finally, I leave you with a quote from Napoleon. 'Always forget the past. No man ever backed in to prosperity.'

*Mick Lathrope.*

Pictured are two of the top winners at the Elmwood Agricultural and Technical College's annual awards ceremony.

Distance appears to be no object for those wanting to attend the Cupar, Fife college's block-release classes in greenkeeping.

**Trevor Dennis** (left), who comes from Norfolk and works at King's Lynn Golf Club, received the St Andrews Links Trust Award for the best practical greenkeeping student. Trevor is currently enrolled on the college's





distance learning supervisory course.

**David J. Merrills** (right) was awarded the Gleneagles Challenge Trophy, which is presented annually to the student submitting the best greenkeeping project. David was, until recently, employed at the Porters Park Golf Club, Radlett, Hertfordshire.

The certificates were presented by Mrs Audrey More, wife of Fife's director of education.

**Surrey** reports the death of Stuart McKay and offers its condolences to his family and friends.

The branch's autumn tournament was held at The Berkshire and 40 members turned out. Our thanks go to the club for allowing us use of the course and clubhouse and to Bernie Tomlin and his company, Rigby Taylor, for providing a superb prize table.

Scores: 1st G. MacNiven (13) 60 points, 2nd P. Pearse (4) 57 points,

3rd P. Weston (14) 54 points and 4th J. Russell (12) 52 points. S. McMillan (12) had the best morning score, totting up 35 points, while the afternoon's honours went to R. Glazier (10) with 22 points.

Brian D. Pierson presented the first winter lecture at Malden GC and our thanks go to the club and Brian.

*Paul Pearse.*

## Dear Sir...

I write as captain of my golf club and a former greens convenor and with the full knowledge and approval of my head greenkeeper.

We have argued in a friendly way for eight years over autumn maintenance and, in particular, the timing and method of the hollow-coring and topdressing programme.

We are an inland Scottish club some 400ft above sea level with a south-easterly exposure on free-draining soil. I believe hollow-coring should be carried out in late September/early October without fail and that, having cored the greens, the topdressing should be applied and brushed into the resulting hollows.

I well remember 20 or so years ago at Gleneagles watching this job being done by five greenkeepers with SISIS hand hollow-corers, followed by a team of spreaders and sweepers.

At our club, we hire a hollow-coring machine, which whizzes round the course and does the coring all right but, by the time we get around to applying the topdressing, it could be weeks depending on the weather, the cores have overgrown or have been trampled in.

I am convinced we should buy a hollow-coring attachment for our Hydromain, so that one green can be completed at a time. Our greenkeeper thinks it is better to hire and that it does not matter if the topdressing goes into the holes or not.

While I don't see every issue of your magazine, I enjoy reading it very much.

*Name and address supplied.*

*It is refreshing to learn of your interest in course upkeep - most golfers don't want to become too involved, writes John Campbell.*

*Your reference to the use of SISIS hollow forks takes me back to the 1930s when hand forking greens was the vogue. As a young greenkeeper in the west of Scotland, we used to do all the greens on our two 18-hole courses with Paul hollow-tine forks. This was extremely tedious, leg-aching work when labour was plentiful and golf courses never had the amount of play they receive today.*

*We did not always follow up hollow-forking operations with topdressing. The cores were allowed to dry out after which they were broken up with a drag mat and worked back into the turf with birch brooms.*

## Old greenkeepers

*Many old greenkeepers favoured leaving the tine holes open through the winter and declared this assisted better surface drainage during periods of high precipitation, as well as allowing the frost to get into the ground to break up panned soil layers.*

*Nowadays, aeration work is highly mechanised and the job has to be done more quickly and efficiently with a minimum of labour. You take the view that hollow tining should immediately be followed by topdressing, doing one green at a time. This would slow the job down and most greenkeepers do not have the time to do things this way - they prefer to get the work done in methodical stages.*

*Some do six greens at a time, others nine, while there are*

*those who like to do all the greens at once - hollow-coring first, then following up with topdressing. It's a matter of timing and other factors have to be taken into account, such as the amount of play, weather, club fixtures, etc.*

*Golfers often get uptight when these cultivating activities begin on the greens, particularly hollow tining - life is never easy for the greenkeeping staff and it is often difficult to get all the work done according to plan.*

*If one is intent on replacing poor-quality soil in the greens with something better, then it makes sense to proceed one green at a time, working the dressing into the core holes with the back of a wooden rake or birch broom. This is a slow process if done properly. But you have a 'good free draining soil' on the course and are not trying to replace it with something new!*

*I am inclined to have the same view as your greenkeeper, who is obviously very experienced and knows that all topdressing is gradually absorbed by the turf - some material finds its way into the tine holes, some of it gets pushed down and is mixed with the soil through other cultivating techniques, such as slit and solid tining. The main objective with topdressing is doing it on a regular basis to build up a smooth resilient surface that will cope with all the wear and tear.*

*Having your own hollow-tining equipment would be an advantage, but it's not necessary to hollow-tine every year and it should be remembered that a lot of good topsoil can be removed from the greens (if it is done too often), which may have taken a long time to build up with topdressing.*



# Using what comes naturally!

ELIE Golf Club head greenkeeper Brian Lawrie is cashing in on a couple of natural assets that lie right alongside his fairways – sand and seaweed from the shores of the Firth of Forth.

Brian and his assistant David Bowers have combined these with grass clippings from the course to make a giant compost heap and they feed the rotted-down result back on to the grass.

The work of collecting the sand and seaweed and then turning the compost used to be a backbreaker – all done with hand shovels. But, three years ago, Elie invested in a McConnel Ditch

King, a three-point linkage-mounted digger/loader that fits on to the back of the club's Massey Ferguson 135 tractor.

The arrival of 'the machine age' heralded a vastly more efficient operation, with the Ditch King's grab scooping up large amounts of seaweed and its digging bucket collecting the sand in a fraction of the time needed for the hand operation. Splay feet on the Ditch King enable it to work safely on the beach.

It then just remained to transport the material from the beach the 500 yards to the compost heap.

Armed with the digging bucket, the backhoe also turns the compost. The increased amounts it turns over compared to a hand-digging operation mean the heap rots down more quickly. This also means the golf course benefits from frequent small dressings of compost, rather than the occasional heavy dressings that were the norm before the Ditch King arrived.

The Ditch King and bucket have also become essential items for excavating and shaping Elie's bunkers. Again, prior to the machine's arrival, this job had to be done by hand.



Top left: the Ditch King also comes in handy for bunker work. You may notice in the background a ship's periscope! This was rescued from a Newcastle upon Tyne scrapyard and enables the starter to see that the 1st green is clear. Top right: down by the seashore, the Ditch King grabs another load of seaweed. Above left: assistant David Bowers digs into the heap. Above right: David with Elie's head greenkeeper Brian Lawrie.



## Jim Arthur — Continued...

meadow grass and far more serious problems remain a complete mystery to them!

The other hardy annual concerns hollow-tine forking. I must have missed some article or talk that extolled the virtues of this type of aeration, since my telephone has been red-hot on the subject. Hollow-tining has been repeatedly proven by engineering research to be less effective than deep chisel-tining or slitting as a method of achieving maximum sub-surface cultivation with minimal surface disturbance. This has made it far less popular, especially with the accent in recent decades on much more intensive all-year-round slitting and, of course, in the last seven years with Verti-draining. Frankly, the only function of hollow-tining is to aid the introduction of soil ameliorants into the soil profile and, in any case, this is much more easily achieved after Verti-draining.

I am horrified to see a resurgence of the totally disproven practice of intensive hollow-tining and heavy sanding — disproven in every case and by the latest US research, except on pure sand greens — and, be it noted, this does not mean sandy construction to USGA Green Section specification. Again, history repeats itself and 40 years ago hollow-tining was condemned by many old Scottish links greenkeepers on the grounds that it let in annual meadow grass in pure links greens. I cannot see any point in hollow-tining and leaving the holes open. Yet, if you hollow-tine late to avoid upsetting

the autumn meetings, then it is difficult to top-dress afterwards without risking a massive attack of disease.

If regular deep-slitting is carried out, with perhaps chisel-tining in summer to avoid disturbing putting surfaces and if Verti-draining is carried out when and where needed to deal with sub-surface pan formation, I can see absolutely no point in hollow-tining, and especially if this is part of a heavy sanding programme. Very little of the sand goes down normal hollow-tine holes and it merely sits on the top and causes, eventually, a severe root break. It used to be said of some greenkeepers that they earned undeserved good reputations for good greens by feeding and watering and heavy sanding, but they had to move every five years to avoid being sacked in the face of impending disaster.

### Engineering research

I must stress that engineering research shows that slit-tining is the ideal method of sub-surface aeration and hollow-tining, which used to be a useful method, not more often than once a year, has largely been superseded by better methods. We must beware of resurrecting old ideas that have no relevance to today's problems — and those advocating it must remember that 25 years ago you could do what you liked to the greens between October and Easter and hardly a member would ever see what was going on. Today, we play golf all the year round and, hopefully, on good putting surfaces. If we have to upset members at any time, let it be for good, valid and unavoidable reasons and not unnecessarily.

### ASSISTANT HEAD GREENKEEPER

APPLICATIONS ARE INVITED  
FOR THE POSITION OF ASSISTANT  
HEAD GREENKEEPER

This is a working position for which applicants should be members of recognised trade associations.

A minimum of five years practical experience is expected and, in particular, a knowledge of sand-based greens would be advantageous.

Please write or telephone for an application form.

Single accommodation is available  
for this senior post.

Liphook (0428) 724555



## OLD THORNS

GOLF COURSE · HOTEL · RESTAURANTS  
Longmoor Road, Liphook, Hampshire.

### WEST MIDDLESEX GOLF CLUB REQUIRE A PERSON TO JOIN OUR GREENKEEPER STAFF

Must be of proven ability. References and career details with reply please.

Salary to be negotiated.

No accommodation.

Reply to:

The Secretary  
West Middlesex Golf Club  
Greenford Road  
Southall  
Middx UB1 3EE



# are you concerned with root development

Slow hard growth, a thick sward, drought resistance, soil conditioning, grass seed germination, tree planting, fine turf, land reclamation, indoor landscaping, a balanced management system, destructured soils, deep green colour, improving your soil ...

... then Farmura Environmental Products  
can help your management programme.



Ask for details of the Farmura range of products or write for colour brochure to:  
Farmura Environmental Products, Stone Hill, Egerton, Ashford, Kent. TN27 9DU.  
Tel: Egerton (023376) 241

# farmura

## ENVIRONMENTAL PRODUCTS

*Caring for the  
environment  
naturally!*

## Watermation

### FOR ALL SPORTS TURF IRRIGATION

You can't beat us when it comes to first class irrigation. With over 15 years experience behind us, we have installed irrigation systems all over Britain, in all the best places, and our sprinklers pop-up in Ireland, in Europe and in Africa.

But you probably know about our past. In the future we will continue to offer the best automatic irrigation installations but now we are ALSO OFFERING A NEW RANGE OF SPRINKLERS, CONTROLLERS AND OTHER SPECIALIST EQUIPMENT, ALL DESIGNED AND BUILT BY WATERMATION IN ENGLAND.

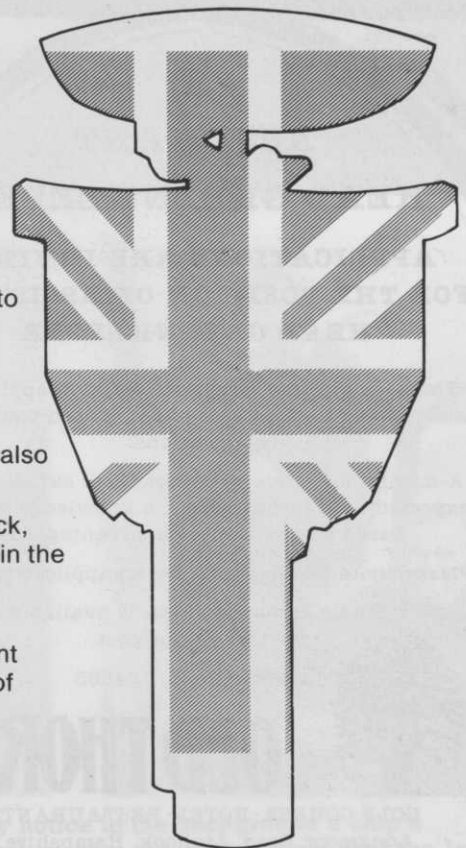
It isn't all "just grass" to us — sometimes it isn't even grass at all. We also design sprinkler systems for artificial surfaces.

So if you have a golf course, tennis court, bowling green, running track, football pitch . . . or even a whole town to be irrigated and monitored in the Middle East, we can offer you irrigation equipment which is specially designed and suitable for the needs of those areas.

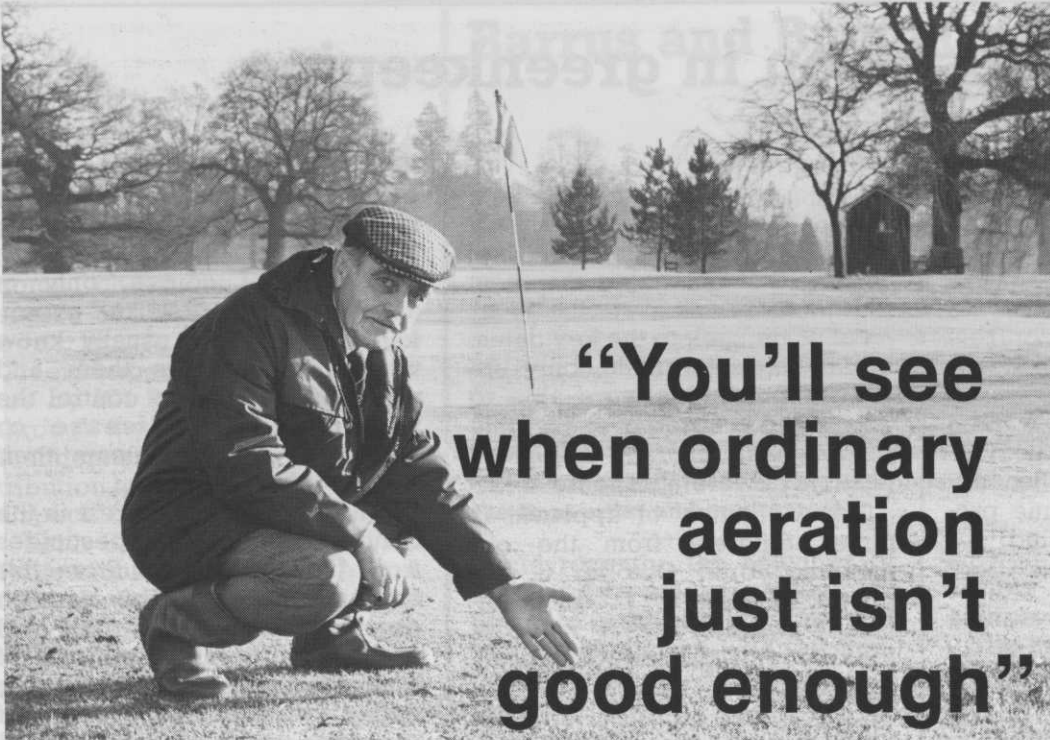
Naturally, we can still supply you with all our usual range of equipment and spares and in fact we now have the most comprehensive range of irrigation equipment in the Country. THE CHOICE IS YOURS.

**WATERMATION LTD.**  
Monument Way E.,  
Woking, Surrey. GU21 5LY.  
Woking (04862) 70303

also at:  
Stirling (0786) 70252  
Dublin 760964







**“You’ll see  
when ordinary  
aeration  
just isn’t  
good enough”**

“You’ll see alright. It may be surface water is still a problem. The turf could be looking thin and tired. Weeds could be on the increase.

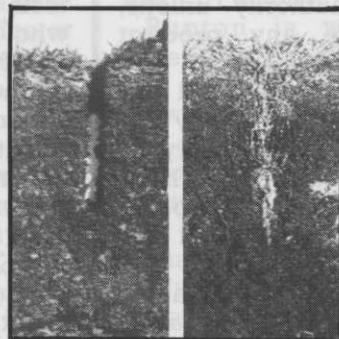
“What you can’t see so easily is the cause. Compaction. Or a build up of thatch. Probably both. Either way, the result’s the same. Water doesn’t soak in properly. The soil is starved of oxygen. Rooting gets shallow. Weeds and disease get a hold. You’ve got a problem and just spiking holes in the ground isn’t going to solve it.

“Hollow tine aeration is the answer. What the Ryan people call Core Cultivation.

“In fact, I reckon that for most heavily used sports areas, Core Cultivation should be a routine part of any turf maintenance programme. Not just a problem solver. Obviously, how often you use hollow tining varies according to different soil conditions. I find once in the Spring and Autumn is about right.

“So what’s this core cultivation all about?

“First, hollow tining actually removes cores of soil—and thatch of course. That obviously relieves soil compaction far better than a spike or slit. As a result, it opens up the soil giving better movement of air, water and fertilisers. If the soil is good, breaking up the cores, either by a scarifier or a Ryan core processor, separates the thatch, which can then be removed easily.



*New vigorous growth after hollow tining*

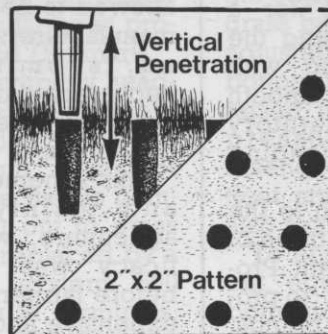
*Cores of soil and thatch*



“Why do I think Ryan hollow tine aerators are the best?

“Well, they’ve got some very special design features.

“Look at the Greensaire for instance. There’s the core pattern created by the tines. A close 2 inch by 2 inch up to 3 inches deep with a 24 inch swath. On a green of say 6000 square feet that’s 3 cubic yards of core material. And you can do that in well under an hour.



*Ryan’s unique design features*

“Then there’s the way the tines actually penetrate the soil. Ryan have a really clever design which makes each tine go in and out absolutely vertically. Unlike other makes, where the tines sort of rock to and fro which can damage the surface.

“It’s that sort of thing that makes Ryan aerators the best. In fact, you should have a look at the whole range of Ryan turf maintenance equipment. It’s the best you can buy”.

## The Ryan Range

### Aerators

Greensaire 16in  
Greensaire 24in with optional  
Core Processor  
Ride-Aire 19in ride-on  
Lawnaire 19in  
Lawnaire 3ft tractor towed  
Tracaire 6ft tractor towed  
Renovaire 6ft contouring  
tractor towed

### Scarifiers

Ren-O-Thin 5hp 18in  
Ren-O-Thin 7hp 18in  
Mataway 10hp 19in self propelled

### Turf Cutters

J.R. 12in width.  
Heavy duty 12 and 16in widths  
with automatic chop off and  
turf rolling

### Purchase, hire or contract schemes available

Contact your nearest official  
Ryan dealer for further  
information

### Scotland

Autogarden (Glasgow) 0505 24341

**Northumberland, Tyne & Wear,  
Durham, Cleveland, N. Yorks. (NW)**  
J M Raine 0388 604847

**Cumbria, Lancs, G. Manchester,  
Merseyside, Cheshire, Derbyshire, N.  
Yorks (W), W. Yorks (W)**  
Fletcher-Stewart (Stockport)  
061-483 5542

**S. Yorks, Humberside (N), N. Yorks  
(Cen. & E), W. Yorks (E)**  
Sewards Agricultural Machinery  
0904 704121

**Ciwyd, Gwynedd, Shropshire, Powys**  
Walker Engineering 069-186 2447

**Staffs, W. Midlands, Warwicks,  
Hereford, Worcs.**  
E T Breakwell 021-7444477

**Lincs., Notts., Leics., S. Humberside**  
Lawnmower Services (Lincoln)  
0522 810562

**Northants., Cambs., Beds.**  
Rogers Engineers 0234 870201

**Norfolk, Suffolk (NE)**  
Ben Burgess Garden Equipment  
0603 628251

**Essex, Suffolk (SW), London (E)**  
R Johnson (T.E.S.S.) 0708 28811

**Oxon, Berks, Bucks, Herts, London  
(NW)**  
Risborough Turf Suppliers  
08444 3023

**Glos., Avon, Wilts. (N)**  
Bristol Garden Machinery  
0272 719361

**Dyfed, Glamorgan, Gwent**  
Celtic Mowers 0792 41517

**Somerset, Devon**  
L F Jewells 0278 424088

**W. Sussex, Hants, Dorset, I.O.W.,  
Wilts (S)**  
Marshall Rolfe 0794 513185

**Kent, E. Sussex, Surrey, London (S)**  
Shanks Mowers (Croydon)  
01-771 4811

**N. Ireland**  
Cyril Johnston & Co. 0232 813121

**Eire**  
Brophy’s Lawn & Turf Machines  
0001 974081

# RYAN

## Turf Care Equipment

### Distributed in the UK by Victa (UK) Limited



Rutherford Road  
Daneshill West  
Basingstoke  
Hants RG24 0QY  
Tel: (0256) 50301  
Telex: 858282

# Pesticide legislation in greenkeeping

OCTOBER 6 1986 was a momentous day for the chemical industry. After decades of non-statutory codes of conduct on the development, marketing and use of products, it signalled the change to statutory controls which will not only affect chemical manufacturers, but anybody involved in selling them through the established distribution chain in the UK. From January 1 1989, users of these same products will also be controlled.

## By Michael Coffey

The chemical industry is, of course, deeply involved in the new statutes. It needs to be because it will be most affected. Within this side of our industry, plans have been made for a number of years, expecting the inevitable and consulting with government to ensure a smooth transition from non-statutory codes to legally demanding controls.

There was a simple aim to the legislation, based on part three of the Food and Environment Protection Act 1985. This was: 'to protect the health of human beings, creatures and plants; to safeguard the environment and to secure safe, efficient and humane methods of controlling pests.'

The act gave ministers the power to:

- Control the import, sale, supply, storage, use and advertisement of pesticides.
- Make information supplied in connection with the control of pesticides available to the public.
- Enforce these provisions with powers of seizure, disposal or remedial action.
- Call for data on all products.
- Issue codes of practice.

- Charge fees.
  - Authorise enforcement officers.
- These are the main issues likely to affect greenkeepers with, of course, the first being the most pertinent.

Let us go back to the key dates. From October 6 1986, only *approved* pesticides were able to be supplied, stored or used. Only *provisionally* or *fully approved* pesticides were able to be sold.

This definition of approval is rather different from the old meaning. Until October 6, approval applied to products officially awarded the 'A' mark by the old Agricultural Chemicals Approvals Scheme (ACAS). Products cleared on safety grounds under the old Pesticides Safety Precautions Scheme (PSPS) were allowed to be sold and used, but manufacturers could, if they wished, submit to ACAS the necessary data on efficacy after two years' use under commercial conditions.

This scheme was non-statutory and mainly designed for agriculture, where proof of efficacy was usually required before farmers risked the use on expensive and valuable crops. It had no meaningful use in the amenity pesticide industry, although many people, most notably local authority unions, refused to use any product without the 'A' mark.

After October 6, the word 'approval' embraced both safety and efficacy. To meet the statutory requirements, manufacturers have to submit data on both aspects before ministers will grant full approval.

This has, perhaps, been rather long-winded, but with legislation now controlling all aspects of pesticides, all users can be sure

that the product chosen and bought will have been effective in proper trials, or is undergoing that process.

This is, of course, only of academic interest to greenkeepers who will usually know what product suits them and which is the best to control the various weed, disease or whatever other problems their course is afflicted with.

What is of more interest is the control on the users of pesticides from January 1 1989. From this date, any user who was born on or after December 31 1964 will need to possess a certificate of competence or else be working under the direct supervision of someone with a recognised certificate.

A certificate is also required for anyone using pesticides in the course of commercial service, such as contractors. Included here also are greenkeepers who may occasionally offer neighbouring clubs a spraying service whether or not a payment of any kind is involved.

Tests of competence for spray operators are being developed by the National Proficiency Tests Council (NPTC), but are not likely to be set up until mid-1987. This leaves only 18 months to handle tests and issue certificates to all who require them. It may be helpful to note here that there is bound to be a long queue for the services of the NPTC. It has 52 county committees and they will be responsible for not only testing greenkeepers, but farmers, contractors, local authority groundstaff and all other categories who would be affected.

It seems clear that help will be needed. As a start, one of the first

## DOING IT IN GRASS? — DO IT

We believe we have the very finest and most comprehensive range of cultivars currently available in the Country. The quality of our turf is backed up with



duties of BIGGA should perhaps be to organise and coordinate the applications to the NPTC for testing. This coordination will not come cheap and a relevant source of finance is perhaps the contribution made to the Greenkeeper Training Committee by ICI Professional Products through the PGA European Tour. I understand that the 1986 contribution has yet to be allocated to a specific use.

Keith Cleverly, manager of ICI Professional Products, is committed to helping the industry through these complicated procedures. Keith initiated the Amenity Horticulture Committee of the British Pest Control Association and, as an executive board member, is actively involved in managing the training and certification of the ICI distributors who have joined the BPCA. These distributors are, perhaps, more affected than greenkeepers as they need to obtain a certificate of competence by January 1 1988 to sell pesticides. The chairman of the Amenity Horticulture Committee of the BPCA is Len Breakwell.

In the course of 1987, information about how to pass the NPTC tests will come from ICI and any help in matters of chemical application is always available from the company's Farnham office or territory managers. Similar services may also be offered by other manufacturers and distributors.

*Greenkeeper* plans to keep fully up to date with developments and will report regularly on details of courses and NPTC tests. In the meantime, it would do no harm for BIGGA regional representatives to get to know their local NPTC man.

## Barrus and Bunton get together



The Bunton 22in greens mower complete with powered rotary brush between the front roller and cutting reel.

"Until recently, the activities of E.P. Barrus were principally confined to outboard motors and garden machinery," Robert Bennett, company chairman and managing director, said, "but we have formed a new division to handle professional grass-care machinery and now represent Bunton, which manufactures products in the USA and Denmark."

The impressive company headquarters at Bicester is well-equipped to handle sales enquiries. After eight years of yeoman service, the Barrus computer has been put out to grass and has now been replaced by a brand new IBM system 600 megabyte unit with 27 terminals. Each sales desk has its own terminal that allows orders to be entered as customers dictate them by phone.

Bunton is well-known to American superintendents, for it has been building commercial mowers for over 35 years. Today, the company markets its equipment all over the world through a network of distributors specialising in turf products for professionals. The product line includes multi-purpose grounds maintenance tractors, commercial rotary mowers with cutting widths from 12 to 61 inches, greens-

mowers, edgers, trimmers and a variety of other specialised equipment.

The Bunton special 22in greens mower, manufactured in Japan, has a powered rotary brush mounted between the front roller and the reel. The brush rotates in the opposite direction to raise the grass before it is cut and is easily adjusted to suit the pitch of the bottom blade. The brush can be raised to reduce the amount of pressure on the grass or disengaged completely. A verticut attachment for thatching is also available.

To ensure a stable and straight cut, equal power is supplied to both sides of the heavy gauge aluminium alloy drive roller. The nine-blade, cutting reel is resilient and resistant to wear due to its hardened steel construction.

The machine is fitted with a standard handbrake to aid transportation over slopes and banks. Quick-release wheels have pneumatic transport tyres, which give good adhesion on uphill ground. It has an all-gear drive train and a four-cycle Robin engine.

Other features include a plastic grass box designed to catch all the cuttings and hold them.

# INTURF!

ated sports and amenity turf  
a friendly "traditional" customer service.

**INTURF LTD.,**  
**75 MARKET STREET,**  
**POCKLINGTON (07592) 4101**  
*evenings & weekends*  
**WILBERFOSS (07595)352**



# Aeration is not a passing fad but now a constant necessity

**IN 40 years of greenkeeping, I have lived through the acid theory, the alkaline theory, lime recommendations from Bingley in the 1960s and '70s, the 'unable to afford' fertiliser time to the 'as much as you can afford' fertiliser time. There was the time when we used little or no water and the time when it was "give 'em as much water as you can," which was followed by the time when cutting back in water was again advised! Things in this business seem to go in cycles, writes Jack McMillan.**

We have now reached a point in our history when another cycle is taking place. Over the last decade, everyone who is employed in the business of preparing and presenting golf courses has realised the importance of aeration. If courses are to become busier then, to keep a very natural structure, i.e. soil healthy, under very unnatural traffic, then we must be allowed to cultivate it.

Aeration programmes have caused so many problems for course management that there is now a move to temper the programmes in the interest of good club-member relations. I can again see a turning back of the clock to all the problems related to surface compaction, for there is nothing that can cause more aggravation, confrontation and pain among golfers than to see an aeration machine on the course.

I remember many years ago listening to an old American turf consultant from Miami, Tom

Mascaro, who said that man has known from early in time that if he stirred a soil with a stick, it became alive and plants thrived - early aeration, in fact.

Everyone in the business end of producing golf courses is aware that soil of any structure, whether it be on links, downs, parks or the varying types of heathland, requires aeration to remain healthy.

The machine trade, consultant agronomists, including the STRI, secretaries and greenkeepers are all aware of the importance of a healthy aeration programme. The only individual not aware of this is the paying customer, i.e. the golfer.

The machinery trade has gone to great lengths to produce good machines to carry out this work. Their responsibility finishes there - they take their money and go. I am sure we all, as greenkeepers, are delighted that these machines are available to us today.

The consultant agronomist, with one exception, gives excellent

advice and leaves the greenkeeper to get on with the painful business of applying the programme. Jim Arthur has, over the years, I am sure tried to get the message across to the paying customer, the golfer, not, I may add, without some pain in the process.

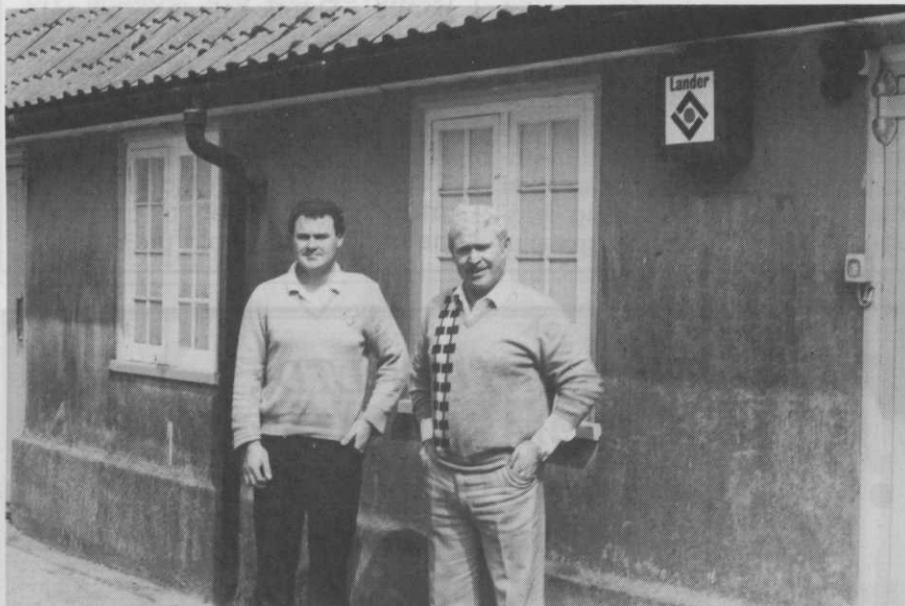
The club secretary is, like the greenkeeper, a bit nearer the scene of the crime. It is the secretary who is first in line when any complaints about the course arrive. It is his unfortunate role to justify the programme to the members. Hopefully, he will not be influenced into bringing pressure on the greenkeeper to reduce his programme.

The greenkeeper is the man in the firing line. It is he who is left to get on with the programme and carry it out. This part of the maintenance programme is the one that affects greenkeepers lives more than anything else. It removes him further from the person he is employed to please, i.e. the golfer.

Somewhere, somehow, we have to get the message across to the golfers that rather than it being a problem, aeration promotes his pleasure more than any other operation we carry out.

Without aeration, the benefits from fertilisers are lost, as it is pointless applying fertiliser to a compacted surface. Without aeration, the full value of wetting agents or irrigation systems is completely lost, leaving more serious problems from run off on proud areas, resulting in dry patch, or soft wet areas due to ponding in low areas, causing a stagnant rot. Without aeration, the course's ability to handle wet weather is also affected. Compacted surfaces do not let even normal drainage and infiltration rates work.

One of the more common comments greenkeepers receive is that the course is overplayed. Again, the message must be got over and it is that golf courses are for playing golf on, all the year round, as long as the prevailing weather conditions are right and



**Two generations of McMillans - Jack with son Billy, one of five sons in the business.**





Jack gets to grips with a Sunningdale green.

as long as we are allowed to aerate, compensating for the additional traffic.

Somehow we must find a way to carry out aeration programmes without disturbing the golfer. Every experienced greenkeeper knows that a well-aerated soil aerates well with little evidence of the work having been carried out.

The real problem lies in very compacted soils where aeraters

leave obvious evidence of where they have been working, i.e. surface plucking and tear, causing unacceptable disturbance to putting surfaces.

I know of greenkeepers whose lives are made a misery for carrying out sensible greenkeeping programmes. Some lose their jobs. I know others who have become ill with worry about it. This problem has brought a measure of stress that was never

there before and the greenkeeper is the whipping boy.

The work has to be done and I would suggest it is tackled early in the week and as early in the morning as possible. What the golfer does not see, etc...

I would also suggest that greenkeepers obtain clear guidelines on what their club's policy is regarding sensible aeration, taking away some of the burden. Unfortunately, many I talk to have no guidelines whatsoever regarding policy in this matter.

Much as I am sure that we should let the golfer know what we are doing and why, I very much doubt if he wants to know. After all, he is out to enjoy a game of golf. It is possible that one of the pleasures of playing the game is the right to criticise the greenstaff. After all, one of my great pleasures is to see people enjoying playing the game on courses we have prepared for them.

● *Jack McMillan is the course manager at Sunningdale Golf Club and vice chairman of the British and International Golf Greenkeepers Association.*

## JACOBSEN HONOUR INVENTOR

The late Lawrence L. Lloyd, past member of the GCSAA and inventor of the Turf Groomer greens conditioner, was honored at a reception Sunday, February 1, held by Jacobsen Division of Textron Inc.

At the reception, John R. Dwyer, Jr., President of Jacobsen, presented Mrs. Barbara Lloyd with a plaque commemorating her husband's contributions to modern turf care equipment design.

Lloyd developed and tested the Turf Groomer over a period of two years. His primary goal was to combat fast thatch build-up on putting greens, but his invention proved to be beneficial in a number of ways. Improved green consistency, increased green speed without lowering cutting height, and improved control of broadleaf weeds, on green fringes were just a few of these additional benefits. Use of the greens conditioner, first introduced last year on the Greens King IV riding greens mower, has been shown to improve green health and consistency. Increases in green speed of as much as 25% have been achieved without lowering the cutting height.

Lloyd was vice president and superintendent at Rancho Canada Golf Club in Carmel, California. Jacobsen purchased his patent in 1985. As part of the patent purchase agreement, the Lloyd estate receives income from the sale of each Turf Groomer.



The Turf Groomer greens conditioner is now available on Jacobsen's standard and Championship walk-behind Greens Mowers.



# TURF PROBLEMS?



## DON'T LET THEM GET ON TOP OF YOU

Get tough with your turf attackers with Supaturf's range of protection products.

Whether you want a full turf management programme or the solution to a specific problem Supaturf have the right answers.

With a national team of specialist representatives and the largest number of

branches servicing customer needs throughout England and Wales, Supaturf can supply the full range of grass seeds, chemicals, fertilizers and sports ground equipment and accessories.

**So let Supaturf get on top of your problems before the problem gets on top of you!**



# Supaturf

SUPATURF PRODUCTS LIMITED

**Branches:**

**North**  
Unit 2  
Ripley Close  
Normanton  
Wakefield  
West Yorkshire  
WF6 1TB  
Tel: (0924) 891000

**Head Office**  
Oxney Road  
Peterborough  
Cambridgeshire  
PE1 5YZ  
Tel: (0733) 68384

**South**  
Dromenagh Farm  
Seven Hills Road  
Iver Heath  
Buckinghamshire  
Tel: (0895) 832626/834198

**South West**  
D.O. Hunt Limited  
14 Fairfax Road  
Heathfield  
Newton Abbot  
Devon  
TQ12 6UD  
Tel: (0626) 834499

**Midlands & South Wales**  
Unit 104B  
Hartlebury Trading Estate  
Kidderminster  
Worcestershire  
Tel: (0299) 250087





The Johnson J-Range is a 'super-grass' range and has everything you need for the finest quality sports, amenity, local authority and landscaping schemes.

A series of specially formulated mixtures gives you a grass for every purpose and there's also a range of wild flower species. And a unique range

of reclamation mixtures.

If you wish to make up your own mixtures we can supply the quality cultivars you need including Waldorf, Dawson, Banner, Parade, Arno, Scaldis and Merlin.

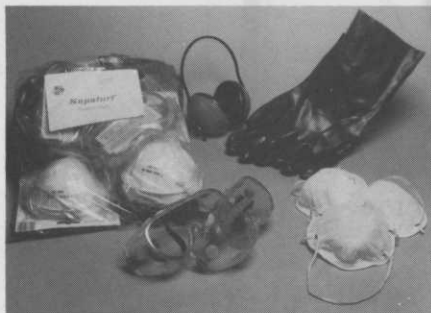
We've over 160 years of experience—it's yours for the asking. Talk to us now about:—

# **J** JOHNSONS **Range**

**SPORTS AND AMENITY GRASSES**

W. W. JOHNSON & SON LTD., LONDON ROAD, BOSTON, Lincs PE21 8AD. Tel: BOSTON (0205) 65051  
Branches at Haydock, Merseyside and Woodley, Berks.

## As A Result Of Legislation...



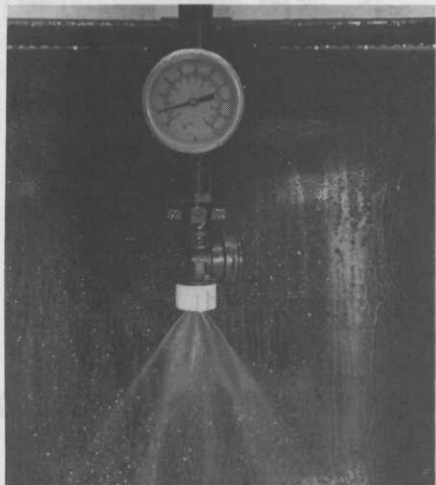
**The Supaturf safety pack.**

Supaturf has introduced a safety pack for spray operators.

It comprises protective gloves, goggles and masks, all conforming to British Safety Standards, and retails at £21.50.

First-time purchasers will also be able to obtain a free pair of hearing protectors.

For further information, contact Supaturf Products, Oxney Road, Peterborough PE1 5YZ. Tel: 0733 68384.



**A worn nozzle, resulting in incorrect spray application.**

A study carried out by May & Baker highlights the significance of nozzle matching on spray pattern uniformity.

To improve the performance of spray application, May & Baker, in conjunction with Lurmark, is offering a range of nozzles specially designed to suit the needs of chemical users.

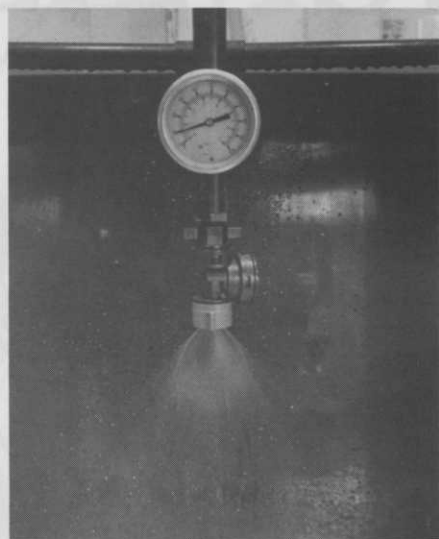
This colour-coded, range covers May & Baker's herbicides, fungicides, insecticides and

growth regulators, enabling the spray operator to choose easily the right nozzle to suit each chemical.

Tests have shown that these nozzles, made of Kematal, are stable and durable.

As nozzles wear, so the flow rate increases. In the case of Kematal nozzles, an increase of only five per cent extra spray in the flow rate was detected after 60 hours continual use, whereas stainless steel nozzles led to 16.1 per cent extra spray and brass gave a 30.4 per cent increase.

**A Lurmark nozzle with spray pattern uniformity.**



## Jola Good Show!

AF Trenchers has launched a new Jola fertiliser spreader, following the company's appointment to market the Jola range in the UK.

The new type 110 has been designed for accuracy of spread control and can be adjusted to provide spread widths from 12 to 24 metres.

The spreader features double stainless steel rotors, enabling it to handle fertilisers of any chemical constitution. A new vee-belt drive system provides efficient and quiet operation. Its spread control is obtained by adjustments to the discharge hole, rather than by varying the rotation speed, and the efficient spread pattern eliminates the danger of

pollution to water courses and adjacent areas, resulting from stray fertiliser application.

The type 110 is a robust machine and the standard fit includes lid, screen and a flexible cable for spread control from the cab. It is also equipped with brackets for raising the spreader when using in standing crops.

Two sizes of machine are offered - 950 litres or 1,350 litres - and filling can be achieved by front loader, tip wagon or bulk bags.

Full technical specifications for the type 110, as well as the single rotor types 50 and 60, are available from AF Trenchers, Gosbecks Road, Colchester, Essex CO2 9JS. Tel: 0206 44411.



**The new Jola type 110 double spreader.**



## A Newcomer With A Difference

Rufford Top Dress Supplies have acquired a sand quarry. Based at Rufford, near Southport, Lancashire, the deposit of silica sand has been described as one of Britain's finest top dress making sands.

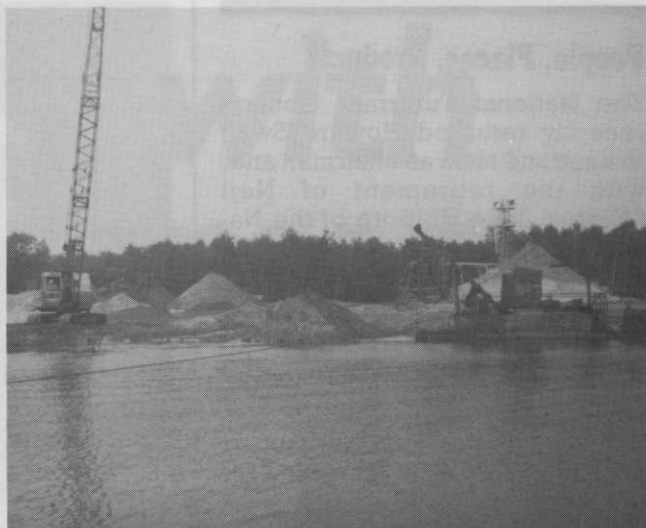
The sand is under 25 acres of thick forest and the soil covering the sand is an accumulation of many years of forest litter, which is now a decomposed leafmould, making it ideal for mixing with the sand to produce a high quality top dressing for use on all kinds of sports turf surfaces.

The company have vast reserves of both sand and soil in the quarry and there is also a huge deposit of valuable peat, which has, as yet, not been touched. A mixture of bark and sedge because it, too, lies under a forest, the peat is considered to be ideal for planting.

The quarry has only recently been taken over by the Rowcroft-Hambro (Group), based at Manchester, and the new owners are now determined to break into the UK top dress market.

As they own, extract and process the product, they guarantee total consistency of quality. And, as they control all of the operation in the quarry, they also guarantee to deliver to practically every corner of Great Britain within 48 hours and, indeed, within 24 hours to many areas.

The company have invested heavily to bring the quality of processing up to a high standard. As both the sand and the soil deposits are lying under a forest, removing brambles and twigs has proved difficult, but now, at last, this has been totally overcome. The end product is a very fine and easy to apply top dress at competitive prices.



The Rufford site has proved rich in resources.

The company had supplied over 60 golf clubs in various parts of the country by the last weeks of 1986 with either sand, soil or top dress and are now actively seeking to appoint agents throughout the country to promote this single product. As it is a single product with a single price, the company believe it would be easy for manufacturers and suppliers of machinery, as well as, of course, companies already involved in the marketing of top dress, to act as agents.

The company plan to install a bagging plant and currently deliver loads from five tonnes up to 25 tonnes in bulk to most parts of the country, but especially to the North-West, North-East, Yorkshire, Derbyshire and Cumbria.

### SANDFORD SPRINGS GOLF CLUB nr. Newbury

require an enthusiastic

## HEAD GREENKEEPER

(commencing April 1987)

The course is at present under construction (the remaining 9 holes to be completed this year) and the post will therefore provide an exciting opportunity of working on the course from its earliest stages of development through to opening in 1988/89.

Must be of proven ability. Career details to be enclosed with reply.

Salary negotiable, accommodation provided.

Reply to:

Hawtree & Son,  
Golf Course Architects,  
5 Oxford Street, Woodstock,  
Oxford. OX7 1TQ

### RUFFORD TOP DRESS SUPPLIES



Require immediately agents for all parts of the UK to help in the launching and establishment of their superb product.

The company has recently acquired ownership of a sand quarry located at Rufford, near Southport, Lancashire. This quarry has vast deposits of a very fine silica sand which has been described by acknowledged experts as one of Britain's finest top dressing sands.

As the quarry has been under a forest for over one hundred years the sand is covered by a layer of soil which is in effect an accumulation of forest litter, now a rich decomposed leafmould. When the fine sand and this soil are processed together they produce a top dress of the very highest quality.

The company is now very well situated and totally determined to make a major impact on this market and this is a unique opportunity for suitably qualified agents to join us, in what would be a long term financially rewarding joint venture.

All enquiries to: The Managing Director, Rowcroft-Hambro (Group) Ltd., Hambro House, Bradfield Road, Urmston, Manchester. M31 1PA Telephone: 061 747 4333

## People, Places, Products

The National Turfgrass Council recently returned Howard Swan to a second term as chairman and, with the retirement of Neil Gilmour, John Holborn of the National Playing Fields Association was chosen as vice-chairman. John Shildrick was reconfirmed as secretary.

"I was particularly pleased with our workshop programme last year," Howard said, "which was excellently supported and anticipate that the fourth NTC conference and seminar (scheduled for October and which will take water management as its theme) will be a major event.

"We are planning a permanent secretariat for 1988 and shall be looking to our supporters in the industry to assist in setting this up."

The council also noted the appointment of council member Jon Bauer (ILAM) on the NPTC committee concerned with training under the new pesticides legislation and an updated bulletin of turfgrass research for publication in December.

The 1986 bulletin analysed areas of research presently being undertaken in the UK. The new version will revise this analysis to mid-1987 and also point towards areas of future research.

**Peter Roberts, general manager at Toro Irrigation, became chairman of the British Turf Irrigation Association at its recent AGM. Robin Hume of Turf Irrigation Services was elected vice-chairman.**

Roberts' immediate task will be to lead his committee of Bill Hawthorn (Watermation), John Penny (Cameron Irrigation) and Howard Swan (Golf Landscapes) to draw up proposals for minimum standards of irrigation on all kinds of turf and landscape.

The BTIA has already published minimum standards for golf course irrigation in its free booklet *Your Guide To The British Turf Irrigation Association* and plans to extend this to cover bowling greens, tennis courts, running tracks, soccer and rugby pitches and, perhaps most importantly, general landscape irrigation.



**Christopher Sturdy.**

Christopher Sturdy, 31, Rolawn's unit manager at Shackleford, near Godalming, Surrey, has been appointed southern area manager. He will be responsible for coordinating the company's two southern units.

David Levy is the new assistant manager with Corin Bowyer, sales administrator. Charles Frankau remains unit manager at Woodbury Hall, near Sandy, Beds.

The company, which has over a thousand acres of turf under cultivation in Britain, also operates from Elvington, Yorkshire and East Lothian.

**Johnsons Seeds has issued the 1987 J Range brochure listing the seven standard turfgrass mixtures and three master blends recommended for sports and amenity areas.**

The new brochure has been redesigned to simplify mixture selection. Proportions of individual components in each mixture are set out, together with recommended sowing rates and mowing heights in both metric and imperial measures. Recommended uses of each mixture are specified and grouped under four main headings.

Mixture descriptions have been revised, so that users can choose the best mix for their needs quickly and with confidence. Further guidance is available on the back cover where an A-Z list advises on mixture selection.

Copies of the J Range brochure are available free from Johnsons Seeds, London Road, Boston, Lincs PE21 8AD.

W. H. (Bill) Heath resigned from Supaturf recently to work as an agent, supplying grass seeds, fertilisers and topdressings through William Riley & Sons, Halmerend, Stoke-on-Trent, Staffordshire. He can be contacted on 0782 627780.

**The IOG's programme of practical weekend training courses opened in January at Birmingham where sportsground construction was the topic.**

Other subjects, venues and dates: are machinery and equipment, at Exeter from February 28-March 1, cricket square maintenance, Twickenham, March 14-15 and Exeter, March 28-29, bowling greens, Chippenham, April 4-5 and winter games pitches, Stockton on Tees, April 11-12.

The fee for each course is £40, inclusive of VAT, refreshments and lunch. The fee for IOG members is £20.

Further details from the Education Secretary, IOG, 19-23 Church Street, The Agora, Wolverton, Milton Keynes, Bucks MK12 5LG. Tel: 0908 312511.

Scottish Agricultural Industries is offering four new composts. Poting Plus has a resin-coated fertiliser enabling plants to be fed for up to nine months.

Container Plus is an advanced formula compost based on a blend of quality sphagnum peats and bark. It contains enmag, the safe source of slow-release nutrients, a resin-coated fertiliser for longer term feeding and grit for greater plant stability. SAI's Container Plus feeds plants for up to 15 months.

Modular SP is a new formula economy compost for use in the production of modular seedlings.

Ericaceous SG is an advanced formula compost with added sand and grit that is suitable for all lime-hating species.

All SAI composts are based on sphagnum peat with the addition of a balanced supply of nutrients including enmag. The four new composts are available in bulk and Modular SP is also sold in 100L bags.

Full details from SAI, 25 Ravelston Terrace, Edinburgh EH4 3ET. Tel: 031-332 2481.



# Round first with Ransomes



**MOUNTED 5**



**MOTOR 350D**



**VERTICUT 214**

**W**hen the course has to be at its best, Greenkeepers can rely on RANSOMES mowers. They're chosen for their performance and reliability to bring an immaculate finish to any course.

Take the RANSOMES TRIPLEX 171 triple greens mower for example. It can mow, verticut and spike to provide the best playing surface. Interchangeability of units is quick and simple without the use of tools. With instant forward and reverse manoeuvring couldn't be easier. And for the finest of finishes there is also the AUTO CERTES, renowned throughout the world for its championship finish.

That's why before most British championships, RANSOMES go round first.

**Ransomes Sims & Jefferies plc** Nacton Works, Ipswich, IP3 9QG.  
Telephone: Ipswich (0473) 270000 Telex: 98174 Fax: 270030.



**YOU'LL FIND US IN ALL THE BEST KEPT PLACES**





## Jack Has Europe In His Sights

Camcorp International and International Resort Holdings have been appointed to represent Jack Nicklaus Golf Services in Europe.

Nicklaus' reputation as a golf course designer is rapidly approaching his record exploits on the course. He has designed 76 courses around the world, 42 of which are now open for play. His designs span eleven countries.

Jack Nicklaus Golf Services provides a complete service to golf clubs and real estate developers, from initial planning through design to organisation of the club structure and maintenance of the course.

Camcorp International, a sports marketing company specialising in European golf, is owned by Roddy Carr, the ex-Walker Cup player. The company currently promotes the Spanish Open and the Portuguese Open.

International Resort Holdings specialises in golf-based developments. It is owned by Graham Fisher and Alistair Smith and was responsible for the first Jack Nicklaus course in the UK - at St Mellion, it recently opened for play.

Jack said: "I have known Roddy and his family for many years and Graham has worked with us over the past five years on the St Mellion project."

"We have been approached by several developers and are currently looking at proposals in France, Germany, Spain, Italy and Portugal. We hope to have five Jack Nicklaus signature golf courses under construction by the end of 1988," Roddy said.

Roddy Carr can be contacted on 01-438 0890, Graham Fisher on 04427 4656 and Alistair Smith on 031-225 3488.

## People, Places, Products - Continued...

**Too many courses have tatty tee markers. One company - Tacit-T-Markers of Unit 3, 3 Millers Lane, Monks Kirby, Rugby CV23 0RJ (Tel: 0788 832166) - has noticed this and is producing a tee marker that is both tidy and light.**

**A height of 16in helps define teeing ground clearly and the markers come in a variety of colours - white for men's medal, yellow for men's and red for the LGU.**

**A set of 36 markers costs £251.64 (£6.99 each) and a club or company emblem embossing service is available at £39 for the set. Postage and packing (£8.36) takes the total price to £299.**

**Toro 570 Stream Rotor sprinklers at Etruria Hall, formerly the Wedgwood family home and now the National Garden Centre headquarters.**



**Brian D. Pierson is now located at Homestead Farm, Ringwood Road, Three Legged Cross, Wimborne, Dorset BH21 6QY. Tel: 0202 822372/824906.**

After the success of its fully automatic irrigation system at last year's National Garden Festival, Stoke, Turf Irrigation Services of Sandbach, Cheshire has already commenced work on a similar installation for the 1990 National Garden Festival at Gateshead.

The TIS system at Stoke comprised five main areas each with its own water supply and pumping system. Controlled by a two-wire multi-zone electronic control system utilising 250 solenoid valves, water was delivered through 1,500 Toro sprinklers, ranging from small Toro AG2 heads, 570 Shrub-heads and Toro 640 and Super 600 series pop-ups to specialised low flow sprinklers and drip for small areas.

Applicants are invited for the post of

## HEAD GREENKEEPER

Applicants with a proven ability and suitable qualifications should send current C.V. to:

**The General Manager  
Staverton Park Golf Club  
Staverton, Daventry,  
Northants.**

## MOORS VALLEY GOLF COURSE

### HEAD GREENKEEPER

A qualified Greenkeeper experienced in all aspects of golf course maintenance is required for the challenging task of maintaining this newly constructed 9 hole course. The golf course, which is part of the Council's Country Park Development, will open in the spring of 1988 and there is a possible extension to 18 holes.

Applicants should apply in writing with C.V. to:

**Personnel Officer,  
Wimborne District Council, Council Offices,  
Furzehill, Wimborne, Dorset.**

Closing Date: 27th February 1987.



# GOLF COURSES – THEIR POTENTIAL AND ARCHITECTURE

I WANT to turn your attention to the task of taking a much wider view of our golf courses, writes *Eddie Park*... We live in an age of equality, but not all golf course sites are of equal potential – most greenkeepers would readily agree with that statement.

In fact, the nearer you are to the 'sharp end', the more likely you are to recognise the limitations under which you have to operate. But that is certainly not true of most *golfers* who have convinced themselves that, with just a little more effort, their course is the equal of any in the world. Here, then, is another subject to be studied in depth.

The most important factors in site potential are the turf and the terrain. If the turf is now good (ie bents and fescues), or if it was good before 'improvement', then it probably has the potential to be good again if treated correctly. Again, the terrain may have been good naturally or it may have been modified by a course builder as instructed by his architect.

A study of golf courses in literature helps to clear the mind. Any book that gives a picture of courses we know today as they existed under different management regimes will be of great service.

Classic books by writers who had an eye for good golfing country are fascinating. Horace Hutchinson wrote *Famous Golf Links* (1891) and *British Golf Links* (1897). Bernard Darwin produced *The Golf Courses Of The British Isles* (1910) with water colour illustrations by Harry Rountree.

More recent examples would be *A Round Of Golf Courses* (1951) by P. Dickinson, *Go Golfing In Britain* (1961) by L. Claughton Derbyshire and *Golfers Companion* (1962) by J.J.F. Pennink.

Looking further afield, a large Australian reference book *Golf* (1978) was edited by Tom Bradley and has excellent pictures and descriptions of courses right across the world.

We must not forget all the handbooks published annually, but none of them can compare with a book I have mentioned in a previous article, *Nisbet's Golf Yearbook* (c1903-1912), edited by John L. Low. Not only does it list all the clubs, but also provides a description of the type and standard of their courses (I wonder if we should start it up again? Perhaps that would be a bit too cruel!). The many clubs in London and the Home Counties are accompanied by maps showing the soils on which they lie.

This sort of information brings it home to me how clever our predecessors were at spotting the best sites for golf. Next time you drive through unfamiliar countryside, try and guess, as they did from the topography and existing vegetation, where you will find the best local course. Only too often nowadays, golf courses advertise their presence by those ghastly parallel rows of stunted trees, so that spoils the game.

## Rapid expansion

Most architects seem to have eventually felt the need to write and there are plenty of books to study. In the days of the rapid expansion of golf – say 1885 to 1925 – it was relatively easy to lay out a good course on the many good sites still available and near enough to centres of population.

Ex-professionals, such as Willie Park, James Braid and J.H. Taylor, were very successful and were followed by some gifted amateurs who became very expert, indeed. H.S. Colt and his partner Charles Allison became internationally famous and published *Some Essays In Golf Course Architecture* (1920).

There are many who would argue that the greatest architect of them all was the Leeds doctor Alister Mackenzie with courses such as Moortown and Alwoodley at home and Royal Melbourne, Cypress Point and

Augusta (collaborating with Bobby Jones) abroad.

Mackenzie had made a great reputation during the First World War by using his landscaping skills to camouflage artillery positions. He not only designed many new courses, but also tidied up many poor designs on older courses. His only book is now widely regarded as a classic. *Golf Architecture* (1920) is a slim volume, but now commands a high price. It has been republished in a luxury edition in recent years.

M.F. Sutton gave us *Design Construction And Upkeep* (1933) and a good book often found at a reasonable price is *Design For Golf* (1952) by H.N. Wethered and the inimitable Tom Simpson. Wethered had earlier written *The Architectural Side of Golf* (1929).

Coming up to modern times, Fred Hawtrey, known to many greenkeepers, put together *Golf Course Planning Design And Maintenance* (1983). A beautiful book is *Golf Course Design* by Geoffrey Cornish, who gave such a fascinating review of the subject at the Cambridge EIGGA conference in 1984.

So we have looked at quite a wide cross-section of books on these subjects. I, for one, am struck by the fact that the most successful architect was the man who picked the best site and I believe that is still true today.

It is all very well to move mountains with bulldozers to achieve the greatest degree of scenic beauty, but recouping the cost and probably meeting heavy maintenance charges may cause the project to be of doubtful viability. The present era of these huge projects could, in future, be seen as just another blind alley.

This wide subject of the potential, both in terms of turf quality and amendment of terrain, is increasingly being perceived by many greenkeepers as of paramount importance to their wellbeing.

Next time, I want to look at books of a technological nature.





If you're looking for the best value it can only be **TORO** ... we may not be the lowest price but in the long run **TORO** are by far the finest economical and efficient **TURF MANAGEMENT EQUIPMENT**. To prove the point why not have a demonstration working under your own conditions ... you'll soon see what we mean particularly if you have other equipment to compare.



**Quality  
Performance  
Reliability**  
most manufacturers say it  
**we mean it!**



**TORO** Please send details as ticked  
 Literature  Nearest Dealer  Trial/Demo

Name .....

Address .....

.....

Telephone ..... G1/87



## REDDISH VALE GOLF CLUB (18 HOLE COURSE)

invite applications for the post of

# HEAD GREENKEEPER

From persons of proven ability with suitable qualifications and experience in all aspects of course management, who have a thorough knowledge of machinery maintenance, watering systems, and also the ability to motivate staff. Salary negotiable — accommodation available.

*Written applications stating age, qualifications and experience to:*

**The Secretary**  
Reddish Vale Golf Club Ltd  
Southcliffe Road, Reddish  
Stockport, Cheshire. SK5 7EE

## NORTHAMPTON GOLF CLUB

require a

# HEAD GREENKEEPER

Applicants must be fully experienced in all aspects of course management, machinery maintenance and staff control.

An attractive salary will be offered together with assistance towards removal expenses. Rented housing accommodation could be made available to the successful applicant on moving to the area.

*Applications in writing giving full details of career and qualifications should be sent to:-*

**The Secretary**  
Northampton Golf Club  
Kettering Road  
Northampton NN3 1AA.

## BUILTH WELLS GOLF CLUB

appointment of

# GREENKEEPER

Applications are invited for this post from persons suitably qualified in all aspects of golf course maintenance. The person appointed will be expected to work with a minimum of supervision, being able to plan a programme of operations and direct other course labour.

The course is in a parkland setting in this beautiful rural area.

Salary and conditions negotiable. An attractive package will be offered to the right applicant.

*Apply in writing with full details of experience and current C.V., also giving names and addresses of two referees, to:*

**The Secretary**  
Builth Wells Golf Club,  
Builth Wells, Powys.

by 24th February 1987.

## THE BRITISH & INTERNATIONAL GOLF GREENKEEPERS ASSOCIATION

### GENERAL ADMINISTRATOR

The Association wishes to appoint a General Administrator based at Bingley, West Yorkshire.

Responsibilities will include the day to day running of the Association's business, management of Education and Training schemes, and the development of activities which will contribute towards the confirmation of the Association's international professional standing.

Applicants aged between 35 and 50 should be able to demonstrate all-round administrative experience, leadership qualities, and a record of representation at senior industrial or national level.

Salary will be in the region of £16,000.

Write for application form to R J Butler, Crew Butler Ltd,  
35 Orchard Way, Stanbridge, Leighton Buzzard,  
Bedfordshire. LU7 9JE

## 36 HOLE GOLF COURSE PORTUGAL

A highly experienced Superintendent is required for a prestigious 36 Hole Golf Course in Portugal.

The successful applicant will be fluent in Portuguese and/or Spanish and be willing to undertake additional instruction.

Experience in man management and a thorough knowledge of modern machinery and irrigation systems is essential.

Initial Contract will be for a minimum of three years with excellent terms and conditions.

*Apply in writing with full C.V. to:*

**Mr. W. G. Squires**  
Dave Thomas Limited,  
Betchton  
Sandbach,  
Cheshire. CW11 0TS

## GRANGE PARK GOLF CLUB ST. HELENS

require an

# ASSISTANT GREENKEEPER

Applicants should be suitably qualified in greenkeeping with knowledge of modern equipment.

Salary negotiable.

*Apply in writing to:*

**The Secretary/Manager**  
Grange Park Golf Club  
Prescot Road  
St. Helens  
Merseyside. WA10 3AD

## BRACKNELL & WOKINGHAM JOINT GOLF COURSE COMMITTEE

# GREENKEEPER

HURST GOLF COURSE  
POST NO. HGC2

Wage: £92.50 per week      Grade: Manual D

Greenkeeper is required for this 9 hole course. Pay in accordance with NJC Scale for Local Authorities Manual Workers, at present £92.50 per week.

Applicants must be experienced and conversant with modern techniques of all aspects of golf course maintenance, including automatic irrigation and maintenance of golf course equipment.

*For an application form returnable by the 16th February, 1987, please contact the Personnel Section, District Secretary's Department, Council Offices, Trinity Court, Emmview Close, Wooshill, Wokingham, Berkshire. RG11 9AE Telephone: Wokingham (0734) 786833 ext. 205 or 207, quoting reference HGC2.*

## STIRLING GOLF CLUB

require a

# HEAD GREENKEEPER

Experienced man with proven ability in all aspects of course management, staff control and working knowledge of machinery maintenance.

Salary negotiable.

*Apply in writing with details of experience and references to:*

**The Secretary**  
Stirling Golf Club  
Queens Road  
Stirling





**NEW**

- Increase in slow release nitrogen content
- Plus two new formulations

# MASCOT MICROFINE

The first choice for a champion playing surface

A slow release fertilizer produced after exhaustive trials and discussions with course managers, greenkeepers and groundsmen. As part of our policy of continual improvement to the quality and dependability of the Microfine range, our latest tests have led us to improve the product in two distinctive ways.

The I.B.D.U. slow release nitrogen source has been substantially increased across the range, plus the addition of two new formulations.

The range is now as follows:- 14:4:7 –  
12:0:6+2% Iron – 8:0:0+2% Iron – 8:0:0+4% Iron –  
18:0:0+6% Iron – 4:10:10 – 4:0:8+2% Iron.

Rigby Taylor wish you success with the new product

Rigby Taylor Ltd.  
Rigby Taylor House,  
Garside Street,  
BOLTON BL1 4AE  
Tel: (0204) 394888

Rigby Taylor (Midlands) Ltd.  
Unit 9A,  
Warwick Industrial Estate,  
Budbrooke Road,  
WARWICK CV34 5XH  
Tel: (0926) 401444

**Rigby  
Taylor**

Rigby Taylor (South) Ltd.  
Unit 7,  
The Riverway Estate,  
Peasmarsh,  
GUILDFORD,  
Surrey GU3 1LZ  
Tel: (0483) 35657

Souters of Stirling  
(Sportsturf) Ltd.  
Cunningham Road,  
Springkerse,  
STIRLING  
FK7 7SL  
Tel: (0786) 72141



## **DOWNES CREDITON GOLF CLUB**

requires a

# **HEAD GREENKEEPER**

The person appointed will have had formal training and will be responsible for maintenance, repair and construction on the golf course, machinery maintenance, the instruction and management of junior staff and course budgeting.

No accommodation                      Salary negotiable

*Applications in writing with full curriculum vitae to:*

**Chairman of Green Committee  
Downes Crediton Golf Club  
Hookway  
Crediton  
Devon EX17 3PT**

**2ND ADVERTISEMENT  
PREVIOUS APPLICANTS NEED NOT APPLY**

## **WOLLATON PARK GOLF CLUB**

has a vacancy for a

# **HEAD GREENKEEPER**

The person appointed must have the essential skills and experience to supervise existing greenkeeping staff and be qualified in all green-keeping duties.

Salary commensurate with experience.  
No accommodation will be provided.

*Please reply in writing, giving full details and experience to date, to:*

**The Secretary  
Wollaton Park Golf Club  
Wollaton Park  
Nottingham  
NG8 1BT**

## **RENISHAW PARK GOLF CLUB**

invite applications for the post of

# **HEAD GREENKEEPER**

Applicants must be fully experienced in all aspects of modern greenkeeping, machinery maintenance, staff supervision and turf management techniques.

Salary negotiable.

Accommodation available if required.

*Please apply in writing giving age, course experience and qualifications to:*

**The Captain  
Renishaw Park Golf Club  
Club House  
Renishaw  
Sheffield. S31 9UZ**

## **FULWELL GOLF CLUB**

Applicants are invited for the post of

# **HEAD GREENKEEPER**

A fully experienced Greenkeeper is required to take charge of this well known Golf Course. He will be a member of a recognised Greenkeepers' Association, and be in possession of the City & Guilds Certificate of Greenkeeping. He will be expected to have a thorough knowledge of modern Golf Course equipment, and to be responsible for course staff.

Salary negotiable.

Modern two bedroom accommodation available.

*Apply in writing to:*

**The Secretary  
Fulwell Golf Club  
Wellington Road  
Hampton Hill  
Middlesex. TW12 1JY**



# Buyers' Guide

## **BARK AND BARK BASED PRODUCTS**

**Camland Products Ltd.**,  
36 Regent Street,  
Cambridge. CB2 1DB  
Tel: 0223 68780 Telex: 81254

**Meicourt Industries Limited**,  
Three Cups House,  
5 Church Street,  
Tetbury, Glos. GL8 8JG  
Tel: 0666 52711 or 53919 Telex: 43144

**BRITISH ASSOCIATION GOLF COURSE ARCHITECTS**

### **Full**

**J. Hamilton Stutt - Hamilton Stutt & Co.**,  
12 Bingham Avenue, Poole,  
Dorset BW14 8NE  
Tel: 0202 708406

**Donald Harradine**,  
CH 6987. Caslano, Switzerland.  
Tel: 091 711561

**Fred Hawtree**,  
**Martin Hawtree - Hawtree & Son**,  
5 Oxford Street, Woodstock,  
Oxford OX7 1TQ  
Tel: 0993 811976

**Donald Steel - Cotton, Pennick, Steel & Partners**

Miller House, Corporation St.,  
Rugby. CV21 2DW  
Tel: 0788-77191

**Tom McAuley**,  
38 Moira Drive, Bangor, Co. Down,  
N. Ireland BT10 4RW  
Tel: 0247 465953

**Peter Harradine**,  
P O Box 1165. SHARJAH,  
United Arab Emirates  
Tel: 009716 356446

### **Provisional**

**Alistair Rae**,  
26 Tannoch Road, Uplawmoor Road,  
Glasgow G78 4AD  
Tel: 050 585 371

**Cameron Sinclair - Cotton, Pennick, Steel & Partners**

Miller House, Corporation St.,  
Rugby. CV21 2DW  
Tel: 0788 77191

**Simon Gidman - Hawtree & Son**,  
5 Oxford Street, Woodstock,  
Oxford OX7 1TQ  
Tel: 0993 811976

**Overseas (Full)**  
**Eddie Hackett**,  
28 Ailesbury Drive, Dublin 4. Eire  
Tel: Dublin 691592

**Joan Dudok Van Heel**,  
Benkenlaan 4, 1640, St Genesius,  
Rode. Nr Brussels, Belgium  
Tel: 358 5518

**Pier Mancinelli**,  
21 Via Achille Papa 00195  
Rome, Italy  
Tel: 06 36036 35

**Jan Sederholm**, S 252 34 Helsingborg  
K. Knstoffersg 3A Sweden  
Tel: 042 371 84

**Overseas (Provisional)**  
**Kurt Roßknecht**,  
Dennenmoos 5a 8990 Lindau-Bad,  
Schachen, Germany  
Tel: 08382 230 05

**R. Berthet**,  
57-59 Rue Lhomond. 75005.  
Paris, France  
Tel: (1) 336 77 50

**Senior Member**  
**Fraser Middleton**,  
15 Kilmaron Crescent, Cupar,  
Fife KY15 4DS, Scotland

**BRITISH ASSOCIATION OF GOLF COURSE CONSTRUCTORS**

**Chipman Limited**,  
Horsham, Sussex RH12 2NR  
Tel: 0403 60341

**Eccles Contracting Ltd.**,  
Brickfield Street, Hadfield, Hyde,  
Cheshire SK14 7DZ  
Tel: 04574 63425

**Golf Landscapes Ltd.**,  
Ashwells Road, Bentley, Brentwood,  
Essex CM15 9SR  
Tel: 0277 73720

**Land Unit Construction Ltd.**,  
Folly Farm, Hanslope, Milton Keynes,  
Bucks. MK19 7BX  
Tel: 0908 510414

**Brian D. Pierson (Contractors) Ltd.**,  
Homestead Farm, Ringwood Road,  
Three Legged Cross, Wimborne,  
Dorset. BH21 6QY  
Tel: 0202 822372

**Southern Golf & Landscapes Ltd.**,  
85 West Street, Warwick, Warwickshire  
Tel: 0926 492898

**COMPOST**  
**Bord na Mona**,  
36 King Street, Bristol BS1 4DP  
Tel: 0272 211666

**FENCING (Timber all types)**  
**Wicksteed Leisure**,  
Digby Street, Kettering, Northamptonshire  
NN16 8YJ  
Tel: Kettering 0536 517028 Telex: 34395

**FERTILISERS**  
**Bentley, Joseph Ltd.**,  
Barrow-on-Humber,  
South Humberstone  
Tel: Barrow-on-Humber 30501

**FERTILISERS AND TOP DRESSING**  
**D.O. Hunt Ltd.**,  
14 Fairfax Road, Heathfield,  
Newton Abbot, Devon TQ12 6UD  
Tel: 0626 834499

**GOLF COURSE ACCESSORIES**  
**Bridges Pennants**,  
68 Southchurch Avenue,  
Southend-on-Sea, Essex SS1 2RR  
Tel: 0702 612344  
Contact: Mr. A. Elvin

**H. Patisson & Co. Ltd.**,  
Stanmore Hill Works, Stanmore,  
Middlesex HA7 3HD  
Tel: 01954 4171

**GOLF COURSE EQUIPMENT**  
**Clan Marketing Co.**,  
Milton House, Loddington,  
Nr. Kettering, NN14 1JZ

**H. Patisson & Co. Ltd.**,  
342 Selbourne Road,  
Luton, Beds LU4 8NU  
Tel: 0582 597262 Telex: 887916

**GRASS CUTTING EQUIPMENT**  
**Ransomes Sims & Jefferies PLC**,  
Nacton Works, Nacton Road, Ipswich,  
Suffolk IP3 9QG. Tel: (0473) 270000  
Fax: (0473) 270030 Telex: 98174  
Cables: Ransome Ipswich  
Contact: J.F.R. Wilson/R. Bishop

**Watkins Naylor & Co. Ltd.**,  
Friar Street, Hereford  
Tel: Hereford (0432) 274361  
Telex: 35302 W. Naylor or contact  
your dealer

**GRASS SEED**  
**British Seed Houses Ltd.**,  
Bewsey Ind. Est., Pitt Street,  
Warrington, Cheshire.  
Tel: (0925) 54411  
Contact: Roger Saunders  
Portview Road, Avonmouth, Bristol  
BS11 9JH  
Tel: (0272) 823691  
Contact: Michael Warne  
Camp Road, Swindon, Lincoln  
Tel: (0522) 86714  
Contact: Philip Adams

**Mommersteeg International**,  
Station Road, Finedon,  
Wellingborough, Northamptonshire  
NN9 5NT  
Tel: (0933) 680674  
Contact: Michael Perkins

**IRRIGATION**  
**CAMERON**  
**a division of Wright Rain Limited**,  
Head Office, Harwood Ind. Est.,  
Littlehampton, West Sussex BN17 7BA  
Tel: Littlehampton (0903) 713985  
Evesham, Worcs.  
Tel: Evesham (0386) 49348  
Ringwood, Hants.  
Tel: Ringwood (04254) 2251  
Spalding, Lincs.  
Tel: Spalding (0775) 3764  
Norwich, Norfolk  
Tel: Swainsthorpe (0508) 470402  
Edinburgh, Scotland  
Tel: (031) 453 4789  
Bridgforth, Shropshire  
Tel: Bridgforth (07462) 61762  
Wetherby, Yorks  
Tel: Boston Spa (0937) 845788

**Watkins Naylor & Co. Ltd.**,  
Friar Street, Hereford  
Tel: Hereford (0432) 274361  
Telex: 35302 W. Naylor or contact  
your dealer

**IRRIGATION EQUIPMENT**  
**British Overhead Irrigation Ltd.**,  
The Green, Upper Halliford,  
Shepperton, Middlesex TW17 8RY  
Tel: 09327 88301 Telex: 928767  
Contact Sales Department

**Toro Irrigation Ltd.**,  
Unit 7, Millstream Trading Estate,  
Ringwood, Hampshire BH24 3SD  
Tel: Ringwood (04254) 6261

**Sports Ground Irrigation Co.**,  
Hereward Lodge, Paget Road,  
Lubenham, Market Harborough,  
Leics. Tel: (0858) 63153

**Waterment Ltd.**,  
Monument Way, E. Woking,  
Surrey GU21 5LY  
Tel: Woking 70303 Telex: 859224

**LANDSCAPE CONTRACTORS**  
**Gavin Jones Limited**,  
Station Road, Motspur Park,  
New Malden, Surrey KT3 6JH  
Tel: 01-942 0055

**LIME FREE SANDS**  
**Buckland Sand & Silica Co. Ltd.**,  
Reigate Heath, Reigate, Surrey  
Tel: 07372 40151

**LITTER BASKETS**  
**H. Patisson & Co. Ltd.**,  
342 Selbourne Road,  
Luton, Beds LU4 8NU  
Tel: 0582 597262 Telex: 887916

**Wire Products (Wales) Ltd.**,  
Treforest Ind. Est.,  
Pryntpridd, Glam.  
Tel: Treforest (044 385) 2501

**LOAM**  
**C.H. Binder Ltd.**,  
Embleys Farm, Moreton, Ongar,  
Essex CM5 0HY  
Tel: Moreton 246 & 320

**LIQUID ORGANIC FERTILISER**  
**Farmura Ltd.**,  
Stone Hill, Egerton, Nr Ashford,  
Kent  
Tel: Egerton (023376) 241

**RANSOMES DISTRIBUTORS**  
**Henton & Chattell Ltd.**,  
London Road, Nottingham  
Tel: Nottingham (0602) 862161  
Contact: Christopher Bryden

**Wilcocks**,  
Walker Street, Preston, Lancs.  
Tel: Preston 53068

**PEAT**  
**Bord na Mona**,  
36 King Street, Bristol BS1 4DP  
Tel: 0272 211666

**PEAT IN BULK**  
**Bord na Mona**,  
36 King Street, Bristol BS1 4DP  
Tel: 0272 211666

**SAND**  
**Martin Bros.**,  
1A Clifton Street, Alderley Edge,  
Cheshire SK9 7NN  
Tel: Alderley Edge (0625) 584571  
Contact: Nick Gray

**Wettern Brothers PLC**,  
Rochester Road, Aylesford,  
Maidstone, Kent ME20 7DX  
Tel: 0622 70431  
Contact: J.F. Hoesen

**SANDS - HORTICULTURAL AND LAWN**  
**Buckland Sand & Silica Co. Ltd.**,  
Reigate Heath, Reigate, Surrey  
Tel: 07372 40151

**SCREENED TOP SOIL**  
**C.H. Binder Ltd.**,  
Embleys Farm, Moreton, Ongar,  
Essex CM5 0HY  
Tel: Moreton 246 & 320

**SEATS**  
**Barlow Tyrie Ltd.**,  
Springwood Ind. Est., Rayne Road,  
Braithree, Essex CM7 7RN  
Tel: Braithree (0376) 22505 Telex: 98173  
(Brochure available)

**Wicksteed Leisure**,  
Digby Street, Kettering,  
Northamptonshire NN16 8YJ  
Tel: Kettering (0536) 517028 Telex: 34395

**SEATS PLAQUES**  
**Wicksteed Leisure**,  
Digby Street, Kettering,  
Northamptonshire NN16 8YJ  
Tel: Kettering (0536) 517028 Telex: 34395

**SEAWEED FERTILISERS**  
**Seamac**,  
Foundry Lane, Chippenham, Wilts.  
Tel: (0249) 652811

**SEMI MATURE TREES**  
**Eastcote Nurseries (Solihull) Ltd.**,  
Wood Lane, Barston, Solihull,  
West Midlands B92 0JL  
Tel: 06755 2033/4  
Contact: Stephen or Michael Fisher

**SEMI MATURE TREE PLANTING (EQUIPMENT FOR HIRE)**  
**Eastcote Nurseries (Solihull) Ltd.**,  
Wood Lane, Barston, Solihull,  
West Midlands B92 0JL  
Tel: 06755 2033/4  
Contact: Stephen or Michael Fisher

**SOIL CONDITIONERS**  
**Soilife: Liquid Enzymes**,  
Romilt Marketing for your local supplier  
North Wyke Farm, Guildford Road,  
Normandy, Surrey GU3 2AN  
Tel: Guildford (0483) 811933

**TEE MATS**  
**Carpetation Ltd.**,  
6 Kaffir Road, Edgerton,  
Huddersfield HD2 2AN  
Tel: 0484 28777  
("Tulturn") - Synthetic Grass Backed  
Rubber - Porous)

**Charles Lawrence UK Ltd.**,  
153A Farnon Road, Newark,  
Notts. NG24 4SP  
Tel: 0636 76218 Telex: 37668  
(Synthetic Grass Backed with Rubber)

**H. Patisson & Co. Ltd.**,  
342 Selbourne Road,  
Luton, Beds LU4 8NU  
Tel: 0582 597262 Telex: 887916

**TREE GUARDS**  
**Lenvale Products Ltd.**,  
Chart Mill, Chart Sutton, Maidstone  
Tel: (0622) 890909

**TREE TIES**  
**J. Toms Ltd.**,  
Wheeler Street, Headcorn, Ashford,  
Kent TN27 9SH  
Tel: Maidstone 891111

**TREES & SHRUBS**  
**Eastcote Nurseries (Solihull) Ltd.**,  
Wood Lane, Barston, Solihull,  
West Midlands B92 0JL  
Tel: 06755 2033/4  
Contact: Stephen or Michael Fisher

**Notcutts Nurseries Ltd.**,  
Woodbridge, Suffolk IP12 4AF  
Tel: 03943 3344  
(incorporating Waterers Nurseries,  
Bagshot, Surrey)

**TOP SOIL**  
**C.H. Binder Ltd.**,  
Embleys Farm, Moreton, Ongar,  
Essex CM5 0HY  
Tel: Moreton 246 & 320

**TRENCHERS**  
**L.D. Bourgein Oxford Ltd.**,  
South Hinksey, Oxford OX1 5AZ  
Tel: (0865) 735420 Telex: 83147  
Att. Trenchers, Sales, Service, Hire

**TRENCHING MACHINES**  
**A.F. Trenchers Ltd.**,  
Gosbecks Road, Colchester, Essex  
CO2 9JS  
Tel: 0206 44411  
Contact: W.D. Baker

**TURF (SPECIALITY)**  
**Rowlan (Turf Growers) Ltd.**,  
Elvington, Yorks YO4 5AR  
Tel: (0904) 85661 Telex: 57796  
Rowlawn G  
Fine Purpose grown sports & amenity turf

**VERTI-DRAIN HIRE**  
**Aeration & Drainage Services**,  
10 Oxendean Gardens, Lower Willington,  
Eastbourne, East Sussex

**Brian D. Pierson (Contractors) Ltd.**,  
27 Vicarage Road, Verwood,  
Dorset BH21 6DR  
Tel: 0202 822372

**SCC Lands Maintenance Ltd.**,  
12 Foxburrow Close, Haverhill, Suffolk  
Tel: 0440 62369


**Worth Draining**,  
Cornbecks, Irnham, Grantham,  
Lincs. NG33 4JQ  
Tel: 0476 842666

**Scotland**  
**Sports Turf Services**,  
Newbridge Industrial Estate, Newbridge,  
Midlothian EH28 8LE  
Tel: 031 333 2345

**Patisson Equipment, tools & accessories**  
from: Richard Aitken, Seedsmen Ltd.,  
123 Harmony Row, Govan,  
Glasgow C51 3NB  
Tel: 041 440 0033



# JACOBSEN



*Full details of the  
range from the  
company's UK  
division at Unit 12,  
N. Lynn Industrial  
Estate, Bergen  
Way, King's Lynn,  
Norfolk PE30 2JG.  
Tel: 0553 763333.*

**Greens King Team...The Best in the Business**