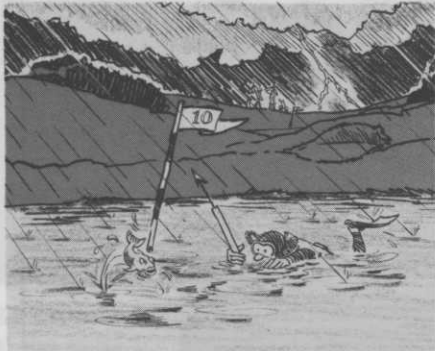


Chance For Clubs To Win Competition Sponsorship



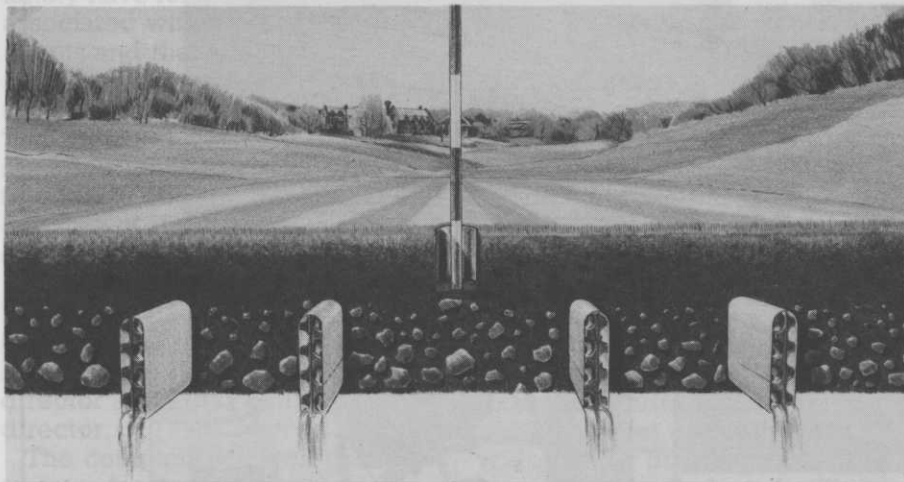
As part of their campaign to promote Hitek Fin Drains for golf courses, BTR Landscaper are offering clubs the opportunity to win a sponsorship deal for a monthly medal competition.

The campaign, commencing in August, will include a programme of mailings direct to clubs. The object is to introduce

the Fin Drain concept into this country, following its success in Australia where it was developed.

Clubs are being offered a free drainage survey by BTR Landscaper and the names of every club accepting this free invitation will be entered into the draw. Ten winning clubs will be given the sponsorship package, which includes a BTR Landscaper Trophy, together with a replica, plus prizes of £25, £20 and £14 for the first, second and third prize-winners.

Full information on the Fin Drain system, together with how to enter your club into the sponsorship draw, are available from Richard Ellison-Smith at BTR Landscaper, PO Box 3, Centurion Way, Farington, Preston PR5 2RE. Tel: 0772 421711.



Top: a course flooded continually is no joke... Above: a cross-section of a Hitek Fin Drain.

Birdies For Wildlife

A charity pro-am aims to raise more than £20,000 to help safeguard the Cheshire countryside. The event, staged by Altrincham-based Tryangle Management International on behalf of the Cheshire Nature Conservation Trust, has set a £675,000 target as its contribution to the Royal Society for Nature Conservation's British Wildlife Appeal.

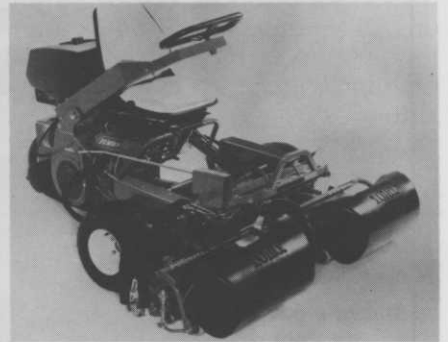
The pro-am takes place on September 28 at Dunham Forest and it is hoped that 90 amateurs will partner some 30 of Europe's

top professional women golfers, including Laura Davies, Dale Reid, Cathy Panton and Liselotte Neumann.

The British Wildlife Appeal, set up in 1985, is run by the Royal Society for Nature Conservation and aims to raise £10 million to support the continued health of our countryside.

Details of the event and the British Wildlife Appeal are available from the British Wildlife Appeal, 164 Vauxhall Bridge Road, London SW1V 2RB.

Take It From Toro!



The Greensmaster 3000.

The new TORO Greensmaster 3000 made its first showing recently.

TORO claims to be the first manufacturer to introduce new O-Ring face seal fittings on most hydraulic lines, which reduce the potential of oil leaks.

A Kohler 16hp Magnum engine is quieter and more durable and electronic ignition reduces maintenance. Hinged lift arms are standard and an unrestricted cutting unit flotation improves traction on undulating ground.

The fuel tank has a 7.5 gallon capacity and most parts, reels and accessories are interchangeable.

The Groundsmaster range of mowers is designed to fit virtually every turf maintenance need - from the small 21in walk behind to large deck models with 27hp four cylinder engines.

There's a choice of five models in the TORO Walk Rotary range - two hand-propelled, three self-propelled, all complete with rear baggers. Width of cut ranges from 18in to 2ft. Optional extras include a leaf shredder, thatcher and side chute.



TORO's Groundsmaster.

All-Clear Given For A New Look At Wentworth

A new multi-million pound clubhouse is planned for Wentworth, following permission from the Department of Environment to remove a temporary historic building listing on the present clubhouse.

The clubhouse has now outlived its economic use and the club's board has opted for a major new complex to be completed in tandem with a third 18-hole course.

The clubhouse design by D.Y. Davies Associates will provide more than 50,000sq ft of changing rooms, bars, reception and administration areas, pro shop, function rooms, dining areas, a large indoor swimming pool, two squash courts and a gym.

"The new facilities will be located to the north of the existing clubhouse and will take advantage of the ground's natural slope," D.Y. Davies' chairman David Davies said. "It has been sensitively designed to be in keeping with the architecture of the Wentworth Estate and will include many features contained within the existing clubhouse."

Work will start in August and scrub clearance for the new Wentworth course will begin during the summer. The new clubhouse is expected to be opened in early 1989 and the third course should be ready for play in the early 1990s.

Sold For £1.5m

Ransomes Sims & Jefferies has acquired the business and assets of Mowing Machine Maintenance of Wath on Dearne, specialist manufacturers of cutting cylinders, blades and grinding machines for domestic and overseas grass machinery markets.

It is intended to continue operating at the Wath on Dearne premises.

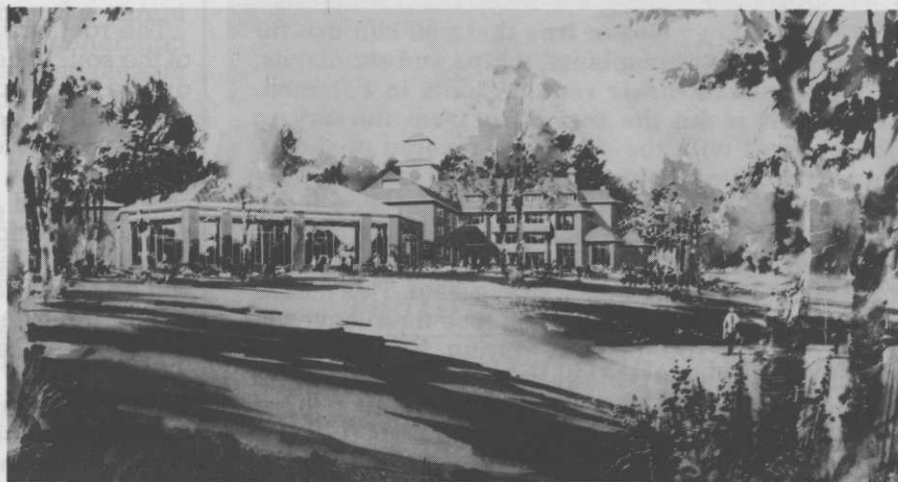
Ransomes group chief executive, Bob Dodsworth, said: "This acquisition provides the group with considerable potential to develop our important spares business, especially in export markets. It will also enable us to market a superior range of grinding machines through our worldwide dealer network."

Legislation Lecture

The IOG's north-east zone is to hold a one-day seminar on the new pesticides legislation in turf management at Sheffield United FC on Thursday October 22, from 9.45am to 3.45pm. Speakers will include specialists from the Ministry of Agriculture, the National Test Proficiency Council, Sheffield University and May & Baker Professional Products Division.

Admission, including buffet lunch, will be £10. Institute members benefit from a 50 per cent reduction.

Booking forms and further information from Derek Harrison, 20 Muirfield Close, Tapton, Chesterfield, Derbyshire S40 1SS. Tel: 0246 204338 between 5pm and 7pm only.



An artist's impression of the new Wentworth clubhouse as viewed from the course with the swimming pool foreground.

are you concerned with root development

Slow hard growth, a thick sward, drought resistance, soil conditioning, grass seed germination, tree planting, fine turf, land reclamation, indoor landscaping, a balanced management system, destructured soils, deep green colour, improving your soil ...

... then Farmura Environmental Products can help your management programme

Ask for details of the Farmura range of products or write for colour brochure to:

Farmura Environmental Products, Stone Hill, Egerton, Ashford, Kent. TN27 9DU. Tel: Egerton (023376) 241

farmura

ENVIRONMENTAL PRODUCTS

Caring for the environment naturally!

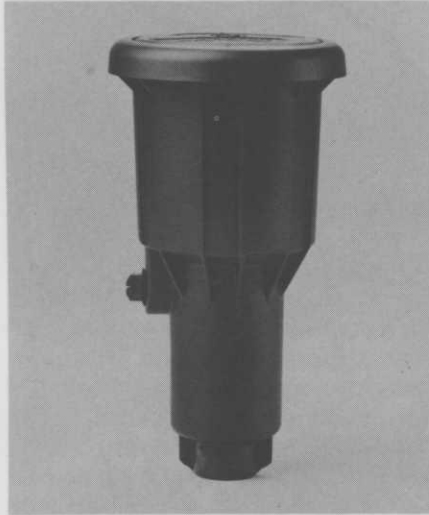


All From Wright Rain

Cameron, the horticultural, sport-sturf and amenity division of Wright Rain, has a new range of Rainbird products, for which it is the exclusive UK distributor.

The additions represent the latest of more than 100 new products introduced by Rainbird since 1981.

MAXI-PAW



A pop-up rotor for use in medium-sized commercial turf areas, the Maxi-Paw is available with four interchangeable, colour-coded, matched precipitation rate nozzles that lock into place. The Maxi-Paw is also available with a Seal-A-Matic device that prevents puddling, run-off and erosion caused by low head drainage. The built-in SAM reduces water hammer, conserves water and saves money.

For increased durability, the Maxi-Paw rotor is constructed with a heavy duty case with reinforced ribs. The Maxi-Paw features Rainbird's patented multi-function wiper seal that assures positive pop-down. The Maxi-Paw features a water lubricated impact sprinkler for long, trouble-free operation. The double-weighted impact arm provides slower rotation, greater distance of throw and improved close-in watering. The sprinkler has full and part circle operation capability.

95DR ROTOR

The 95DR valve-in-head electric rotor is ideal for irrigating large turf areas, such as golf courses, football pitches, bowling greens and parks. The 95DR combines part and full circle operation capability in one unit, its circular or wheel impact drive resulting in a slower and more even rotation speed for longer life. This water lubricated impact

sprinkler has a precision moulded power nozzle to maximise radius of



throw, while its low 23° angle of trajectory provides superior wind resistance.

The 95DR contains a built-in, pressure regulating, diaphragm solenoid valve, which allows for individual sprinkler control for more flexible and precise watering while reducing system cost. The valve also serves as a SAM device to prevent run-off and erosion due to low head drainage. The 95DR's pressure regulator is field adjustable and assures even water distribution and saves energy and water. A full circle only model, the 91DR, is also available.

R-50 ROTOR



A rugged pop-up sprinkler for irrigating medium turf grass areas, the R-50 features Rainbird's patented multi-function wiper seal that assures positive pop-down even in the worst soil conditions. The R-50 has part and full circle operation capability in one unit.

The sprinkler's small exposed surface diameter makes it almost invisible to vandals. Its patented memory arc feature always returns the rotor to its present arc setting

even if vandals tamper with it. The R-50's simple turbine drive design is water lubricated and has no expensive gears for vandals to strip. The rotor's dual bypass system compensates for pressure and flow, resulting in more uniform rotation and increased sprinkler life.

15-VAN

Providing a more versatile selection of spray patterns, the 15-VAN nozzle works on Rainbird 1800 series pop-up sprayheads and is ideal for watering oddly shaped areas. The 15-VAN has an infinite arc setting of 0° to 330°, eliminating the need to stock a wide assortment of fixed spray patterns.

To keep the operator dry while adjusting the arc, the 15-VAN has a visible arc setting from the top of the nozzle. The 15-VAN has a radius adjustment screw, which allows the radius to be reduced for smaller areas.

PES - ELECTRIC PLASTIC SCRUBBER VALVE

PES scrubber valves are effluent water valves that contain a self-cleaning, flow-activated scrubber consisting of a stainless steel cylinder screen and a plastic scraper. The scrubber keeps algae, micro-organisms or silt from clogging the valve control parts, thus giving trouble-free operation in very dirty waters.

PES valves are available in two sizes and can be ordered with an optional pressure regulating device, the PRS-2, which senses inlet pressure and maintains constant outlet pressure despite fluctuations in mainline pressure. This ensures better sprinkler performance and saves water and energy. PES valves have a brass flow control stem and manual on/off capability. PES valves provide brass valve features, including high pressure operation of economical plastic valve prices.

Prices and details of the new products are available from Cameron on Littlehampton (0903) 713985.

