

The Latest From Lely

Lely Beaver's two new hydraulic gang mowers are light and versatile for operation in almost any conditions.

The Lely Beaver TM380 combines the simplicity of tow-behind gang mowers with the all-weather performance of hydraulic drive. The pto-driven hydraulic system includes filtration and overload protection, with automatic cut-off for all units when raised. Six-blade cylinders are fitted as standard, with full width rear rollers and skids, which are adjustable for cutting height.

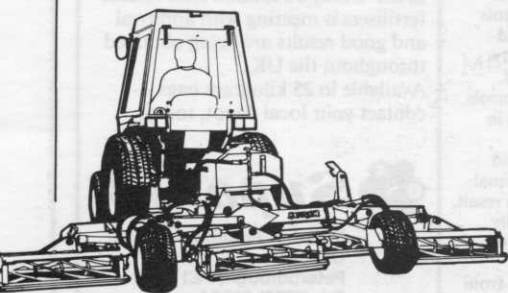
The working width is 84in, height of cut is from $\frac{1}{2}$ in to $2\frac{3}{8}$ in and the transport width is 76in. Options include external service spool valves, four-blade or eight-blade cylinders and floating cutterheads.

The drive system to the Lely Beaver TM508 hydraulic gang mower incorporates overload protection and full-flow filtration. There is independent cut-off for the wing units when raised and the three centre units have a master cut-off valve, giving a choice of cutting widths.

Six-blade cylinders are standard, with full width rear rollers and skids, also adjustable. Full articulation allows each cutterhead to follow undulations.

The working width of the TM508 is 142in. It has the same height of cut options as the TM380, while its transport width is 91in. Extras include external service spool valves, four-blade or eight-blade cylinders and floating cutterheads.

Full details of both models can be obtained from Lely Iseki Tractors, Station Road, St Neots, Cambridgeshire.



Fuel For Thought

Another source of power at King's Norton Golf Club.



King's Norton Golf Club in Worcestershire has achieved savings on fuel costs for its mowers by switching from petrol to propane.

With 250 acres of grass to maintain, course manager Peter Bailey decided to convert his six biggest mowers to propane last March. As he keeps accurate fuel records, he was able to calculate the exact benefits of the changeover.

"When we switched to propane, the cost of two-star petrol was 36.5p per litre. We had been buying a total of 11,000 litres each year, of which 8,000 litres, costing £2,920, went on the six mowers - 8,000 litres of propane cost £1,288, a big saving, even taking into account the cost of converting the machines plus the tank rental."

The mower conversions were carried out by Turfgoods, which operates in conjunction with propane supplier Flogas. "Turfgoods took just a day to convert each mower, with a mechanic working in our workshop," Peter added.

A one tonne storage tank, equipped with a hand pump, was installed by Flogas. This is topped up when necessary.

Peter was advised that he would probably use more pro-

pane than petrol. So far, he has not found this to be the case - perhaps because the mowers are kept in tip-top condition.

"The performance of the mowers following the conversion has been excellent with no loss of power. In fact, they now seem much smoother, which may be due to the fact that propane is lead free."

As propane is an unvaporised fuel, it cannot be introduced into the engine, so there is less wear and tear. This means that spark plug and oil filter life are increased and oil can be used up to 400 per cent more.

"I am also impressed by the environmental benefits of propane. There are practically no fumes, filling the mowers' tanks is easier and cleaner and if a leak did occur, the grass would not be damaged, as with petrol." Peter also pointed out that pilfering was impossible.

For further information, contact Glynn Harby at Flogas. Tel: 053021 352/416.

● *At the time of going to Press, petrol prices were falling. Peter Bailey's story was told prior to this trend, therefore the examples quoted should only be treated as such. Ed.*

A UK First

Golf Landscapes designed and installed a new Toro irrigation system for the greens, tees and approaches at Royal Berkshire last year.

A feature of the system, which uses Grundfos CR vertical multi-stage in-line pumps, is that each of the 36 greens is watered by four pop-up sprinklers, controlled individually to maximise efficiency.

Most irrigation systems in the UK are of a block design, where all sprinklers on a green are activated at the same time and, so, apply equal amounts of water to each part of the green. The single head system at the Royal Berkshire club adds flexibility to

the irrigation programme.

Tees and approaches on the two courses are watered by Toro sprinklers, which give full circle, adjustable part circle and two speed heads as each location demands. Certain fairways are watered with quick coupling hose points and Toro's new travelling sprinkler.

Three Grundfos CR 16-18 and one CR 4-120 vertical multi-stage in-line centrifugal pumps provide the boosted water for the pop-up sprinklers. The CR 4 acts as a jockey pump, monitoring the system requirements. When flow is insufficient, one or more of the CR 16s is activated by a solenoid.

The system installed at Royal Berkshire includes computerised control, as well as some 800 individual sprinkler stations.

The concept could pave the way for single head control irrigation systems at many more British golf courses and full details can be obtained from Grundfos Pumps, Grovebury Road, Leighton Buzzard, Beds. Tel: 0525 374876.

Help With Planting Time Traumas

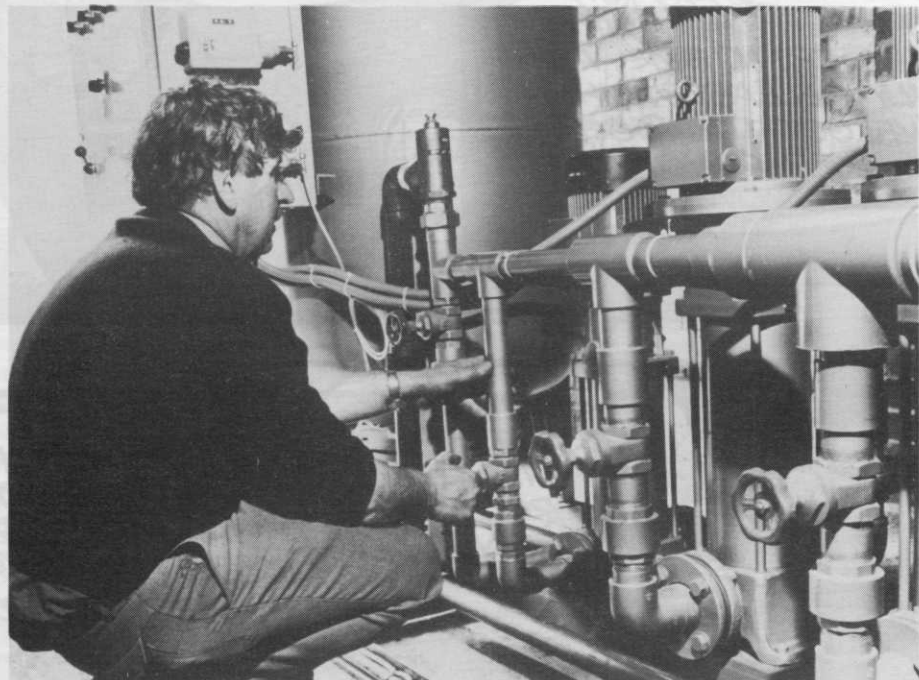
Since Maxwell Hart launched the Broadleaf P4 polymer soil additive in 1984, the benefits of moisture retentive materials have been put to widespread use. But the company emphasises that users should ensure such materials are functional, too.

Maxwell Hart has no doubts about the abilities of Broadleaf P4. It was given immediate acceptance and has since proven its worth - particularly in the planting of trees and shrubs. Afterwards, in the battle to establish root systems, P4 releases moisture 'reservoirs' to the root system as required.

Broadleaf P4 can absorb up to 400 times its weight in water and, with unlimited dry-out and rehydration capacity during its lifespan of about five years, it is a long-term solution to soil conditioning.

The additive reduces evaporation, inhibits leaching and limits the build-up of harmful salts and also upgrades the structure, hydration capacity and aeration of any soil, sand or compost.

Full details from Richard Tigwell, Maxwell Hart, Winnersh, Wokingham, Berkshire RG11 5HF. Tel: 0734 785655.

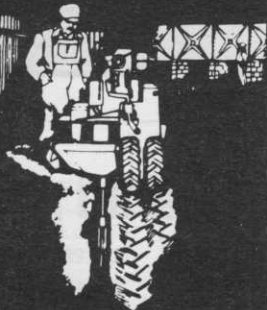


Royal Berkshire's Grundfos CR vertical multi-stage pumps.

SAND SLITTING?

AFT trenchers are good—
very good

... because we have been manufacturing and developing trenching machines for sportsfields over a 15 year period. Whether you want to buy or hire, our machines are first class. Find out more about the range. Write or telephone for details, demonstration etc



AF Trenchers Ltd
Gosbecks Road
Colchester CO2 9JS
Tel. 0206 44411

FOR SALE

1 Jacobsen MK 4 Green King
Ex Demonstration Unit 20 Hours on Clock

PRICE £5,000.00

1 Toro GM 3 Greens Machine
Fully Overhauled

PRICE £1,300.00

ELLESMERE AG
SALOP ROAD
OSWESTRY
SHROPSHIRE
TELEPHONE: OSWESTRY 657232

People, Places, Products

The summer of 1984 nearly caused disaster at the Liverpool Garden Festival – the ornamental turf dried out and consultant Jim Arthur recommended spraying with Farmura Green, which proved successful. So, Farmura approached the organisers of the 1986 Stoke Garden Festival and James Wilson, the horticultural co-ordinator, agreed that treatment with Farmura would benefit the fine turf areas. As the seeded areas were too 'young' to have developed the normal load-bearing characteristics, a SISIS Hydromain Seventeen with a sprayer unit was used to apply Farmura Sportsturf. The organisers are pleased with the results so far and confident of long-term benefits.

A revamped range of amenity grass seed mixtures has been introduced by Hunters of Chester. Supreme lawn seed, suitable for golf and bowling greens and cricket squares, now contains 70 per cent Waldorf chewings fescue and 30 per cent Highland brown top bent.

Sports lawn seed, for tennis courts, hockey fields, golf tees and cricket outfields, is now made up of 40 per cent smooth stalk meadow grass, 25 per cent Waldorf chewings fescue, 25 per cent Ensylva creeping red fescue and ten per cent Highland brown top bent.

Other reformulated mixtures include Outfields, a general purpose playing fields mixture, and Sportsfield renovation mixture.

The only mixture to remain unchanged is Sovereign lawn seed, which can be used for the same purposes as Supreme, but is claimed to be more cost effective.

For further information, contact Peter Hunter on Chester (0244) 47574 or Brian Hunter on Halifax (0422) 823787.

The SISIS Auto-Rotorake heavy duty, powered scarifier now has an adjustable front flap, which can be lowered for safety when being used without the grassbox. Depth controls are located on the righthand side of the machine



The SISIS Hydromain Seventeen spraying Farmura Green at the Stoke site.

and operate through a shrouded universal joint. It is also now fitted with a 5.2hp Villiers-MAG petrol engine.

Cameron has named Mark Stanley retail sales manager for the south east.

With over ten years experience in horticultural irrigation, Mark joined the company via Glen Heat and Irrigation, TTS Baggaley and Wilco Industries, all of which are Cameron distributors and agents. During this time, he gained experience in the latest techniques of water application, such as rockwool culture NFT, mist and fog propagation, glasshouse gantry use and flood bench watering.

John Penny, a Cameron rep for 14 years, has been promoted to product manager.

Dabro International recently acquired the Eurotec product range and has embarked upon an intensive development programme.

The company's original approach to new concepts can be seen in an effective control over tines, blades and knives in the turf slitter range – the degree of penetration being controlled by the operator from the driver's seat.

For further information on the new Dabro machinery, contact the company at Mill House, Mill Street, Prees, Whitchurch, Shropshire SY13 2DL. Tel: 0948 840162.



Innovation from Dabro International.



Frank Crookson.

Supaturf has appointed Frank Crookson its first national sales manager.

Frank, 52, joined Supaturf six years ago as northern area manager.

●
Palmers horticultural and amenity division has made Ivan Hubbard, 38, sales rep for Cambridgeshire, Norfolk, Suffolk, Lincolnshire, Essex, Nottinghamshire and Hertfordshire. Palmers' products include the

new BASF Compo Floranid, Aqua-Gro, Supagro and the compost ranges.



Ivan Hubbard.

CDC Landscapes of the Chapel Works, Waldringfield, Woodbridge, Suffolk IP12 4PT (Tel: 047 336 733/4) has designed and is now constructing a nine-hole course at Priory Park, Nacton, Essex for Peter Little, who owns the site, part of a caravan park on the banks of the River Orwell.

Greens and fairways have been seeded and the course is due to open early next year at the latest.

It will be run on similar lines to the Heath Farm course at Waldringfield, which is owned by the chairman of CDC Landscapes, Mr A. Clarke, and was designed and built by his company.

A clubhouse is already established in the Old Priory, where changing rooms will be provided. Membership for between 250 and 300 will be created, while visitors will be welcome to play the compact course well-populated with mature trees.

●
Last summer, Richard Adam left Melton Mowbray Golf Club in Leicestershire to join Maldon GC, Essex as head greenkeeper. His wife Diane (24 handicap) was already a playing member at the new club when Richard (18 handicap) partnered her while making his competitive debut on New Year's Day. The couple won the competition thanks, in part, to Richard's ace at the 166-yard 14th. A jubilant Richard said: "What a start! The first day of 1986, my first competition and my first hole in one. Not bad, eh?" Not bad at all!

farmmura

1976-1986 Ten years of Research and Service to turf

farmmura Sportsturf

Used from initial reseeded through to maintenance. Farmmura encourages quicker establishment of grass seed, root development, tillering and a thick sward without a flush of growth. Encourages fine grasses and can be used in ecologically sensitive areas. Farmmura increases soil bacteria count (Archer Report 1984) and makes locked up nutrients in the soil available to the plant. Other proven benefits include increasing drought and disease resistance.

Uses-Reseeding, Golf Courses, Sports Pitches, Racecourses, Bowling Greens, Cricket Wickets, land reclamation, ecologically sensitive areas.

farmmura Green

Farmmura with the addition of iron and wetting agent. Designed especially for areas where a high standard of presentation is required producing a deep green colour within a few days. Added benefits are increased resistance to disease, hardening of the grass, increased stimulation of fine grasses — all with no flush of growth.

Uses-Golf Greens, Bowling Greens, Tennis Courts, Lawns etc. Formulated for fine turf, Farmmura Green is also available in a formulation for more extensive areas to special order — for example Golf Fairways, Racecourses.

farmmura N

Where a specification or programme calls for low inputs of major nutrients, these can be supplied ready mixed with Farmmura to produce a semi-organic liquid fertiliser. Available to your specific requirements by quotation, only one application need to be made, so saving time and equipment. For example, Farmmura with six units of nitrogen per acre or 1 cwt. 5-6-6 per acre, **Uses-Low input management programmes, land reclamation.**

The benefits of Farmyard Manure, which have been known for thousands of years, are now available in a convenient, easy to use form. Proven in use by turf managers, 1986 marks the Tenth Anniversary of Farmmura products in amenity use. Farmmura has achieved its growing reputation based on results and is recommended by the leading turf consultants and used by most of the top venues in the U.K. and increasingly overseas.

USE OF FARMMURA PRODUCTS LEADS TO LASTING IMPROVEMENT AND COST BENEFITS

For detailed information, contact your distributor or

Farmmura Ltd, Stone Hill, Egerton, Kent. Tel: Egerton (023376) 241