



less. And it costs a lot less than you think.

weather when you use it. Floranid is resistant to leaching, reduces scorch risk, keeps grass growing for longer even in a drought, and helps bare patches recover beautifully.

Independent trials have proved Floranid is more efficient to use. The results are more satisfying. And it's more cost-effective than you think, whether it's on the village green or in the national stadium. That's why Floranid is Europe's most successful amenity turf fertiliser.

If you want a tough, well-rooted sward – packed with strong, even growth, attractive to look at, hard-wearing

to use, easy to look after – look into the Floranid range. The facts make other fertilisers look expensive.

# Floranid

Europe's top-selling amenity turf fertiliser.

BASF United Kingdom Limited, Lady Lane, Hadleigh, Ipswich. Tel: (0473) 822531.

Floranid is a BASF trademark.

**BASF** Group





# News . . News . . News . . News .

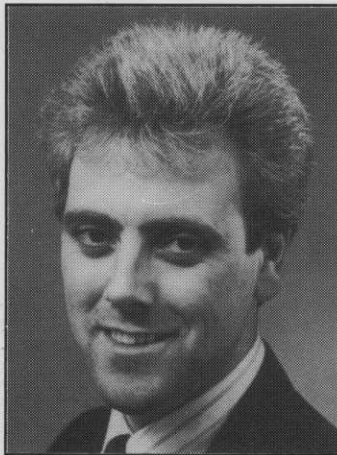
## NEW ASSISTANT DIRECTOR AT BINGLEY

Following the retirement of Mr John Shildrick, Assistant Director of the Sports Turf Research Institute, the Board of Management have appointed, as their new Assistant Director (Research), Mr P. M. Canaway.

Mike Canaway joined the STRI in 1974 on a contract financed by the Department of the Environment to study wear and durability of sports turf. One of his first achievements was to develop a "wear machine" for simulating the effects of play in turfgrass experiments. The machine is capable of simulating different types of wear, including football, golf and abrasion as occurs on training, kickabout areas and parkland. The development of the wear machine had a major impact on the Institute's research programme. Also in the early period, Mike Canaway developed equipment for measuring the "grip" or "traction" available to players on turf and this is now incorporated in a draft British Standard for testing traction or friction on synthetic turf. Both the wear machine and traction apparatus were used in studies on wear tolerance of grasses, soils and nutrition during subsequent years. In 1981 Mike Canaway started a major programme of research on sand constructions for sport, the object being to provide a free draining playing surface and good playing conditions. In 1985 he was honoured to be asked to present the Keynote Address on soils and plant nutrition at the International Turfgrass Research Conference in Avignon, France. The work on sand rootzones has flourished, with research finance being obtained from the Royal and Ancient Golf Club, the Football Trust and the Football Association. Mike Canaway has been asked to lecture at various venues throughout the United Kingdom and he has published some 35 scientific papers on various aspects of his work at the Sports Turf Research Institute.

Mike Canaway is married with three sons and lives near Skipton in North Yorkshire where he is Secretary of Craven Speakers Club. His other interests include cross country running, gardening and hill walking.

## New Reps for Ransomes



**Michael Prentice**

Michael Prentice 27, had previously been a service engineer with the well-known Maidstone based landscape contractor, Turfsoil.

On leaving school, Michael joined the Amenities Dept. of Kent County Council and attended the Mid-Kent College of Technology, where he gained a City and Guilds, with distinctions in horticulture and horticultural machinery.

Until recently a member of the Territorial Army, he served in R.E.M.E. as a qualified vehicle maintenance engineer. During his 6 and a half years as a Territorial he visited Belgium, West Germany and The Netherlands.

Although rock climbing, in particular the sea cliffs at Swanage, is his main hobby, for two seasons he was the mechanic for a Formula Ford 2000 racing car team competing at Brands Hatch and Lydden.



**Mark Radford**

Following five years as an area representative with the well-known horticultural dealer Henton & Chattell, 33 year old Mr. Mark Radford has been appointed Ransomes grass machinery representative for the East Midlands and North East England.

Educated in Nottingham at Forest Fields Grammar School and Brackenhurst College of Agriculture, where he gained a City and Guilds in turf culture, Mark Radford's first appointment was Grounds Maintenance Manager with Trent Polytechnic in Nottingham. He subsequently had a spell with British Seed Houses where he was an area representative.

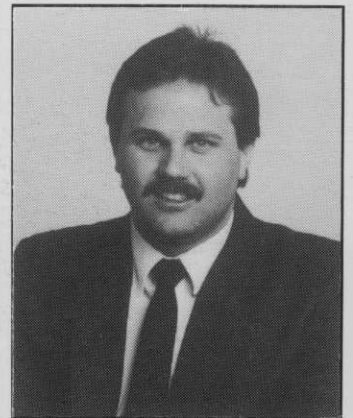
A dedicated supporter of Notts County Football Club, Mark Radford and his wife Carole live in Nottingham, where they are enthusiastic theatre goers.

## QUALCAST SERPAR STRENGTHEN TECHNICAL SUPPORT

Qualcast Serpar have strengthened their technical support to the professional market by appointing a professional technical service representative. Serpar are the specialist group company handling service and parts for Qualcast Garden Products and Atco Ltd.

Barry Goodchild will be responsible for providing a full machinery after-sales service for the Atco professional range of products including the Gangmaster, Royale and Tractor ranges.

Before joining Serpar Barry was a marine engineer for ten years.



**Barry Goodchild, appointed as professional technical service representative by Qualcast Serpar Limited.**

## Royal opening at Leeds Castle Golf Course

Her Royal Highness Princess Alexandra, patron of the Leeds Castle Foundation, joined Ryder Cup Captain and former Open Champion Tony Jacklin, when she formally opened Leeds Castle's re-designed golf course, last month.

Tony Jacklin was the star guest of a foursome to play the first round on Leeds Castle's 9-hole golf course, which has been

re-designed by Neil Coles, with the creation of four new holes and new water hazards.

After lunch, Princess Alexandra walked through the Castle grounds and gardens.

During the afternoon Tony Jacklin held a golf clinic for a group of local players, who regularly use Leeds Castle golf course.

# NEW MARK 200 CONTROLLERS FROM WEATHER-MATIC.

Weather-matic has announced the addition of a new commercial series of micro-processor controllers. The Mark 200 Series will offer designers a choice of 12, 18, 24 or 30 stations in a heavy duty housing. As on all Mark controllers, the 200 Series will feature a Day-Bright™ high intensity LED display for superior outdoor daytime visibility.

Programming the Mark 200 Series Controller is fast and easy with the function selector switch and four large, clearly labelled programming buttons. User training is minimal.

The LED display further aids programming by showing current time or pro-

gramme values. A choice of six or seven-day calendar programming allows for even-day, odd-day, or third-day watering. The dual watering feature provides two independent programmes with four daily start times each.

A start-up/back-up programme automatically provides two daily 5 minute watering starts on all stations in the absence of a specific programme. The back-up programme can be switched 'off' at the user's option.

A separate test programme permits the operator to run all P1 or P2 stations for 2 minutes each without disturbing previously programmed duration times. Additionally, the

test programme will skip stations that do not have programmed watering times.

The Mark 200 will 'stack' up to 7 start times. 'Saved' times which occur while the unit is watering will start after the programme in progress is completed.

A self-charging battery back-up system retains programmes and clock times in the event of a power failure. A 'short sensor' that detects shorted valves flashes an LED on the face panel and skips watering at that station as long as a 'short' condition exists.

Other standard features include 0 to 99 minutes timing at one-minute increments, a valve power switch to deacti-

vate stations without disturbing set programmes, and semi-automatic or manual start capability.

All Mark 200 Commercial Series Controllers feature a heavy duty transformer, industrial terminal blocks, built-in pump start and pump protection circuit in a heavy-gauge steel housing. The hinged cover has two side toggle latches and a cylinder lock. An optional pedestal mount is available.

Weather-matic manufacture a complete range of irrigation controllers, valves and sprinklers which are distributed and installed in the UK by Prime Waterman Limited, Wangford, Beccles, Suffolk NR34 8AX.

# JACOBSEN

## HF-5 AND TRI-KING™ MOWERS

Here's the right combination for high quality cutting and trimming in parks and other council applications.

### HF-5 Hydraulic Tractor/Mower

- 5 gangs with free floating 6- or 10-blade reels to follow ground contours
- 33 hp liquid-cooled diesel engine
- Lightweight (8 PSI ground pressure) but high capacity—mow up to 50 acres per day

### Tri-King 1471

- 3-wheel drive for superior hill climbing ability
- Hydraulic reel lift for better productivity with less effort
- Hydraulic traction drive—no belts to slip or adjust
- Easy maintenance—easy access to engine, quick belt replacement
- Auto-type drum brakes for hill holding ability
- Choice of 5- or 10-blade reels, floating or non-floating for quality cut
- Isolation mounted engine for less vibration and noise

Jacobsen compact hydraulic mowers—part of a full line of Jacobsen equipment for parks, council and golf course maintenance: small and medium walk-behind mowers, riding rotary mowers, grooming tools, greens and fairway equipment, gang mowers, large turf tractors and special purpose vehicles. See them all. Call: King's Lynn (0553)763333.

**JACOBSEN**  
DIVISION OF TEXTRON LIMITED  
Bergen Way, King's Lynn,  
Norfolk PE30 2JG





## Kubota Tractors for Turnberry



When George Brown arrived at Turnberry two years ago from Broom Park in Kent, he was faced with the situation of taking over a championship course which needed an equipment update.

The new owners – NITTO KOGYO of Tokyo were positive in their forward planning. Turnberry had to be, and remain, a major course and a con-

tinuing venue for the Open Championship.

Budget plans were agreed and a schedule of investment drawn up to meet the new owners commitment to the future of golf in Scotland.

Included in the schedule of investment was a requirement for two new tractors.

After looking at all available tractors and many

years of practical experience, George was convinced that the ideal golf course tractor was in the 30-35hp mark, four-wheel drive, power steering and low PSI.

At SCOTSTURF '87 at Ingliston, George took the opportunity to take a close look at various tractors on the market. Attracted to the overall package Kubota had to offer, an

appraisal was made of the Company, its product range, and Dealer back-up. Subsequently, a demonstration was arranged at Turnberry of Kubota products suitable for the course requirements.

These demonstrations led to the purchase of two Kubota L2850 tractors, one fitted with a back-hoe and loader.

### AGRIMASTER® & AGRICROP®

Liquid Growth Stimulants

#### TIP THE SCALES IN YOUR FAVOUR

Two invaluable ingredients in one container!  
Farmyard manure PLUS seaweed make the perfect foliar spray for fairways, greens, sports & recreation grounds and all amenity purposes.

- ENCOURAGES ROBUST, EVEN TOP GROWTH
- TAKES UP LESS STORAGE SPACE
- LOWER OUTLAY
- IMPROVES ROOT STRUCTURE
- HIGHER NUTRIENT VALUES
- LABOUR SAVING

# 2 GALLONS PER ACRE

## 6 PINTS (3.4 LITRES) TREATS 1800 SQUARE YARDS

AGRIMASTER® is a 100% organic formulation of manure and seaweed containing N[8-8%]PK, growth stimulants and a range of trace elements, all of natural origin.

AGRICROP® has similar ingredients but with added nitrogen [19.5%]. Both products are available with extra iron.



#### AGRLAND

ORGANIC FERTILIZERS LTD  
BLUE ROOF FARM, THROOP ROAD, THROOP  
BOURNEMOUTH, DORSET BH8 0DW  
Telephone: Bournemouth (0202) 532291  
Telex: 418297 CHACOM G  
Telefax: (0202) 298676 Groups 2-3

® Registered Trademarks. Patent pending.



# IoG's GOLDEN YEAR

Paradoxically the 43rd annual IoG Sports & Leisure World Trade Exhibition – which takes place at the Royal Windsor Racecourse, Maidenhead Road, Windsor, Berkshire from 20th-22nd September 1988 – is celebrating its Golden Jubilee!

The Exhibition was first held in 1938 (the war and its aftermath account for the seven lost years).

With demand for space up by a massive 25 per cent, this

year's exhibition is now all set to be the industry's biggest ever event.

- \* 388 exhibitors
- \* 46,000 square metres of stand space
- \* 16,000 square metres of working demonstration areas
- \* two covered pavilions
- \* exhibitors from 27 overseas countries.

To this must be added a record number of colleges which will be featured in the

extended Educational and Training section. They include:

Askham Bryan, Aylesbury, Berkshire, Cambridgeshire, Cheshire, Evesham, Lancashire, Merrist Wood, Oaklands, Pershore, Plumpton, Rycotewood, Somerset, South London, Sparsholt, West Sussex and Writtle.

Also joining them in that section, will be such bodies as the Agricultural Training Board, BALI South Thames

Training, the City & Guilds of London Institute, Garden Machinery Association, National Playing Fields Association, National Turfgrass Council and the Sports Turf Research Institute.

The education displays will be supported by a programme of 18 mini-lectures covering such topics as Winter Games, Bowling Greens and Cricket Squares maintenance, which will be held in the Lecture Theatre.

## JOHN SHAW OPEN DAY



*Mr Andrew Darlow (TORO) demonstrating the 220D to Mr Seymour of Hastings Borough Council who is awaiting delivery of his 220D.*

Although the recent J.S. Open Day did not enjoy the best of weather this did nothing to dampen the numbers nor indeed the enthusiasm of everyone concerned. In fact around 80 invited guests including Local Authorities, Greenkeepers and Groundsmen seemed to treat the weather with the contempt it deserved. No doubt because there was plenty of machinery on view to raise the spirits, not to mention the lunch which, once again, was splendid.

Several products were demonstrated including the Groundmaster 220D a recent addition to the TORO stable. This 3 cylinder diesel engine machine is highly manoeuvrable and is fast gaining praise. The 52 in. or 62 in. rear discharge cutter decks which may be fitted, are an addition to the range and a unique

flotation system ensures improved ground following.

The Flagship of the TORO range the Reelmaster 450D was also on show. This high output all-hydraulic mower powered by a 50hp Mitsubishi engine with power steering travels up to 15mph and will mow up to 10.5 acres per hour, 5 or 7 bladed cutting cylinders are available and the heads can be either fixed or floating.

Within the TORO section of Lely the New Reform-Metrac 4-wheel drive tractor unit has been added to the range as it will enhance and complement the existing TORO products.

The Metrac is a 38hp 4-wheel steer unit which is ideally suited for banks and difficult terrain work which can be fitted with flails or rotaries or any other front or rear mounted attachment.

## KAWASAKI MEETS THE DEMAND



*Readily identified by the twin headlamps mounted below the front carrying rack, the Kawasaki KLF220 is a very sophisticated machine available at the value for money price of £1,899 plus VAT.*

Over the last few months, Kawasaki have been embarrassed by their KLF185 ATV – or rather by their lack of stock. For this well-proven work-horse has proved such excellent value for money that they had completely sold out, while still waiting for the replacement model.

The good news is that the new model (pictured) not only still provides superb value for money (it retails for £1,899 plus VAT), but also incorporates many worthwhile advantages.

The enlarged engine capacity gives a worthwhile boost in torque to this reliable four stroke engine, which retains both electric and recoil start systems. The KLF220 retains independent swingarms with dual shock ab-

sorbers for the front suspension, but at the rear there is now Kawasaki's refined Quad-Link system that offers a progressive, rising-rate action. Previously, stopping was via a single rear drum brake, now this is supplemented by drum brakes for each of the front wheels.

The new styling is practical as well as attractive: twin headlamps provide a wider spread of light than the original single unit.

Features that remain unchanged include the five speed gearbox with automatic clutch and reverse gear, shaft final drive, and the use of a vibration-reducing balance shaft in the well proven engine.

## HYDRAULIC LIFT VERSION OF ATCO GANGMASTER

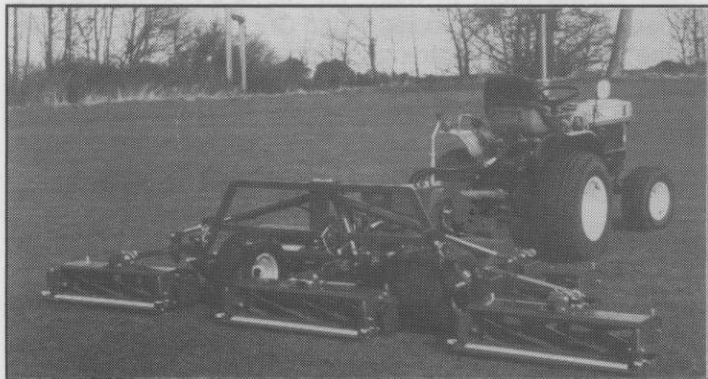
Hydraulic lift is now available on all four versions of Gangmaster, the PTO belt driven gangmower made by Atco.

For ease of operation the user will now be able to lift the cutting heads automatically without having to leave the cab, particularly useful when moving from one cutting site to another.

There are four versions of the Atco Gangmaster. It is available with either 5 or 3 cutting heads

and overall cutting widths of 138 inch and 83 inch respectively, and with either fixed or floating heads.

Special features on the Gangmaster include a belt driven system, operated from the tractor's power take off, designed to provide constant cylinder speed in all conditions with the added advantage of avoiding expensive damage if a hidden object is hit – the V belt will simply 'slip'.



For further information contact: David Woolridge, Marketing Manager, Atco Limited, Suffolk Works, Stowmarket, Suffolk IP14 1EY. Tel. (0449) 612183, or Peter Evers/Karen Green, Edson Evers & Associates, Public Relations Consultants, Priory House, Friars Terrace, Stafford ST17 4AG. Tel. (0785) 55146.

## BROUWER 5 GANG MOWER



One of the Brouwer range of trailed gang mowers.

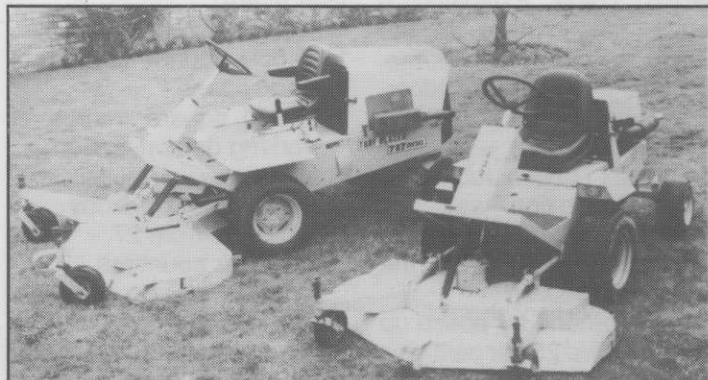
The Brouwer range of turf-care machinery has a first-rate reputation for quality and reliability and the latest tractor mount reel mower is loaded with exciting new features and options. Golf Course models are available, delivering a fine cut.

The Golf Course model is fitted with floating heads to cope with .5 inch fine cut to 2 inch rough cut. No lengthy adjustments are needed, just a flick of a lever. Optional brushes are also available which virtually eliminate tractor tracks from fair-

ways.

The most outstanding features of the new lightweight mower include simple one man 5 minute operation to detach the rear mowing units and release the tractor for other duties, full 5-gang operation with 4-gang and 3-gang modes for tight spots, simple bedknife to reel setting via one adjustment bolt, four-wheel drive traction, hydrostatic transmission and finger-tip controls for easy raising and lowering of cutting units or for transportation.

## TURFBLAZER OUT FRONT MOWERS LAUNCH IN GREAT BRITAIN – NEW RANGE NOW AVAILABLE FROM ISEKI U.K.



The Turfblazer range of out-front professional mowers is now available in Britain with cutting widths from 1.5 to 4.5 metres wide.

The Turfblazer range of out front mowers manufactured in America by Howard Price Turf Equipment is now available in Great Britain from Iseki U.K., giving a wide variety of cutting widths in both rotary and cylinder forms from 1.5 to 4.5 metres wide.

Three models are initially being imported by Iseki with power outputs from 22 to 78 horsepower, all hydrostatically driven and with 3 or 4 cylinder water cooled diesel engines.

The smallest of the models is the 22 horsepower Turfblazer 422 with a choice of 60" or 72" wide rotary cutting decks with options of snow blowers or front mounted brushes. The decks themselves are offset for close trimming and feature quick change height adjustment from 1.5 to 4.5 inches. All Turfblazer decks have front mounted flotation wheels for perfect contour following.

Moving up the scale is the Turfblazer 727 with its 27 horsepower engine, hydrostatic drive means the operator can vary ground speed independent of engine rpm, whilst the simple two pedal control gives instant forward or reverse. On the 727 is the option of an 84" cylinder mower in three gang configuration or a five gang set up for mowing up to 130" wide on the 40hp power unit. All the cylinders are available in either 6 or 8 blade form for cutting heights from 3/8" to 2 3/8". Verticut blades are also available as an option.

Finally, Iseki will be doing selective trials and demonstrations this year with the mighty Turfblazer 180, a 78 horsepower 4 cylinder diesel engine machine allowing rotary cutting up to 14 feet wide in one pass. The hydrostatically driven machine with hydraulically folding wings is capable of cutting up to 50 acres per day in either rotary or cylinder form.

Commenting on the introduction of the new Turfblazer range, Colin Gregory, Iseki's Sales Director, said "We took a long time deciding on a range of out front mowers. Turfblazer is well respected in America and we feel this range offers the professional operator a choice of cutting widths, plus excellent economy and durability. We'll be only too pleased to show the Turfblazer range to you and demonstrate why we believe it offers so much".

Further details are available from Iseki U.K. on 0480 218100.

The result is a quality mower that is economical, versatile and dependable. Turfand Professional, sole UK distributors of the Brouwer range of machinery, provide a first-class spares facility and back-up service through their nationwide team of representatives. This expertise, added to the reliability and dependability for which the Brouwer range has become renowned, means that the customer has at his disposal a complete package that is second to none.



# New British Triplex to Hit the Golf Market

A new greens mower has been announced by Huxleys Grass Machinery, the Hampshire based family company at Alresford, known best in this country as the main Cushman dealers.

The independent British firm, headed by Ted Huxley and his two sons, have had the machine under wraps for some time to ensure that the principal requirements demanded by greenkeepers were met.

It is a no frills machine, easy to use, quieter than other diesels, economic in running costs, there is a first class service and parts back-up, and the machine has front wheel drive and rear steering.

The white painted triplex, designed by a team of engineers under the direction of Ed Fox, will be priced at around £10,000 when it goes into full production

prior to being launched at the IOG Windsor Show in September.

In a market dominated by Jacobsen, Toro and Ransomes, the Huxley Three 58, so called because of the three cutting cylinders and the 58 inch cutting width, is powered by a Kubota diesel engine.

From tests carried out on a number of golf courses in the south of England it is said to use only 1.6 litres an hour in fuel, which, compared to the petrol engines of other machines can save a golf club around £500 a year in running costs.

The Three 58 has hydrostatic drive with separate pedals for forward and reverse, stopping by easing off the drive pedal. Cutting speed is around 3 mph at 180 cuts per yard, with a top travelling speed between greens of 8.5 mph.



*The Huxley Three 58 Greensmower*

*A full report on the Huxley Three/58 will appear in the July/August issue.*

## LLANDUDNO (Maesdu) GOLF CLUB Ltd.

*Urgently require an ambitious, enthusiastic and experienced*

### HEAD GREENKEEPER

with course management qualifications.

The golf course is mainly meadowland with a few holes of links texture.

Approximately 100 acres. SSS 73.

Remuneration by negotiation.

No accommodation available but assistance will be given in relocation.

*Applications together with full C.V. to:*

THE SECRETARY  
LLANDUDNO (Maesdu) GOLF CLUB Ltd.  
HOSPITAL ROAD  
LLANDUDNO  
GWYNEDD  
N. WALES LL30 1HU

## Turf who



FOR SPORTS SURFACES  
FOR BOWLING GREENS  
FOR AMENITY AREAS

The solution to your "green" problem.

**Turfland**  
*where the grass is always greener*

**The country's leading turf nursery.**

**Nurseries in the prime grass-growing counties in England**

Head Office: Turfland, Dutton, Warrington, Cheshire, WA4 4LL.  
Tel. (0928) 719336 (6 lines)

## CAME DOWN GOLF CLUB

*Require a*

# HEAD GREENKEEPER

Applicants should be capable of maintaining high standards on this 18 hole course and of leading and motivating a team of three assistants.

They must be experienced in all aspects of greenkeeping and have a thorough knowledge of modern equipment.

No accommodation available.

*Please apply in writing to:*

THE SECRETARY  
CAME DOWN GOLF CLUB  
DORCHESTER  
DORSET DT2 8NR

## Head Greenkeeper

Scale 5, £9,780-£10,665 inclusive

Required at our Hounslow Heath Golf Course to head a small team.

You must have experience of fine turf work and be able to identify turf pests and diseases.

Familiarity with the use of chemicals and competence in spraying methods are essential as is a knowledge of the use of plant and machinery.

You must be able to undertake physically demanding work and hold a valid driving licence in order to drive a tractor from the course to the depot for maintenance purposes.

For an application form telephone 01-572 5513 (24 hour answer service) quoting ref: LS/08/25 or write to the Director of Leisure Services, Civic Centre, Lampton Road, Hounslow TW3 4DN. Closing date 1 July 1988.

*Job Sharers Welcome*



# Hounslow

An Equal Opportunity Employer

GOLF GREENKEEPING  
the most widely distributed golf  
course management magazine  
in Britain

Our Appointments Section  
produces quality responses for  
all levels of Greenstaff  
Telephone: 0937-63181

## COTTESMORE GOLF & COUNTRY CLUB

*Require*

# A FIRST ASSISTANT GREENKEEPER and A GREENKEEPER/ TRACTOR DRIVER

*Apply in writing with full C.V. to:*

THE SECRETARY  
COTTESMORE GOLF & COUNTRY CLUB  
BUCHAN HILL  
PEASE POTTAGE  
CRAWLEY  
SUSSEX RH11 9AT

## WILLESLEY PARK GOLF CLUB

*Invite applications for the post of*

# HEAD GREENKEEPER

Applicants should be fully experienced in all aspects of greenkeeping including machinery maintenance and be capable of controlling and motivating staff.

No accommodation available but assistance given towards any removal expenses.

Salary negotiable depending on age and experience.

*Please apply in the first instance to:*

THE SECRETARY  
WILLESLEY PARK GOLF CLUB  
TAMWORTH ROAD  
ASHBY DE LA ZOUCH  
LEICESTERSHIRE LE6 5PF

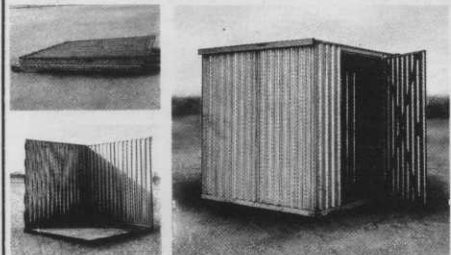
For application form  
Position re-advertised



# TRADE DIRECTORY

SMALL ADS IN THE TRADE DIRECTORY — £40 PER YEAR

## RECROCABIN FLAT PACK Security Store



Quick Fix . Maximum Security . Low Cost  
To O Class Fire Regulations . All Steel Vandal Resistant  
Ideal for Chemical and Pesticide Storage  
**Record Playground Equipment Ltd.**  
Beach Works, Canal Road, Selby, N. Yorks  
Tel: (0757) 703620

## ARTIFICIAL GRASS

**AstroTurf Artificial Grass**, PSA Ltd., Vorda Works, Highworth, Swindon, Wilts. SN6 7AJ. Tel: (0793) 764301. Telex: 449703. Fax: (0793) 765319. Contact: David Stoker.  
**The Greensward Company**, The Old Hall, Langham, Oakham, Rutland, Leicestershire LE15 7JE. Tel: Oakham (0572) 2923 & 56031. Telex: 34362 Greeco G.  
**P.N. Structures Ltd.**, 5 Vigo Street, Piccadilly, London, W1X 1AH. Tel: 01-734-2578. Design, supply and installation of a completely artificial grass system, specifically tuned to golf greens and tees.

## CONSULTANT AGRONOMISTS

**Martyn T. Jones**, Consulting Agronomist in Landscape and Amenity Turf Culture, 41 Pennine Way, Great Eccleston, Preston, Lancs. PR3 0YS. Tel: (0995) 70675.

## CONTRAVATING AND BRILLION SERVICE

**Boughton Loam Ltd.**, Boughton Quarry, Boughton, Northampton. Tel: (0604) 847814.  
Suppliers of Loams, Sports and Horticultural Dressings.

## DRAINAGE TUBES AND PIPES

**W.T. BURDEN LTD.**, Wellsley, Keynsham, Bristol. 35mm to 300mm PVC Land Drainage Pipe, Polythene Water Pipe, UPVC Pressure Pipe and Fittings, Soil Stabilisation Fabric and all Drainage, Building, Civil Engineering Materials, delivered from eleven depots. Tel: (02756) 4761. Contact: Don Wakley.

## FERTILIZERS & TOP DRESSINGS

**Fisons plc.**, for the comprehensive turf fertilizer range, and both bagged and bulk peat and peat/sand top dressings, delivered nationwide.

Professional Horticulture Department, Paper Mill Lane, Bramford, Ipswich, Suffolk IP8 4BZ. Tel: Ipswich (0473) 830492.  
"Maskells" for Comprehensive Range of Fertilizers in Granular, Powder and Liquid form, Bagged and Bulk Peat(s), Pulverised Bark(s), Turf Dressings, Soils, Sands, Composts delivered U.K. Tel: (01) 476 6321. Contact: Maskells Golf Course Department Stephenson Street, London E.16. Quotations by return.  
**Boughton Loam Ltd.**, Boughton Quarry, Boughton, Northampton. Tel: (0604) 847814.  
Suppliers of Loams, Sports and Horticultural Dressings.

## FUNGICIDES

**Fisons plc.**, for Turfclear combined turf fungicide and worm cast control and Filex against Pythium and Phytophthora. Professional Horticulture Department, Paper Mill Lane, Bramford, Ipswich, Suffolk IP8 4BZ. Tel: (0473) 830492.

## GOLF CLUB SIGNAGE

**WOODBLAST SIGNS**, Lower Standen Hey, Whalley Road, Clitheroe, Lancs. BB7 1PP. Tel: (0200) 22156.  
Signage with a difference. Quality, plus distinctive and unusual character. Tee signs showing hole layout. Prestige entrance signage with club name and golfer silhouette. Information and direction signs, etc. etc. COLOUR BROCHURE.

## GRASS MACHINERY RANSOMES DISTRIBUTORS

**Burrows G.M. Ltd.**, Wigan Road, Leyland, Lancs. PR5 2UE. Tel: (0772) 421778. Contact: Mr. J.K. Sutton.  
**Burrows G.M. Ltd.**, Spring Slade Works, Cannock Road, Stafford. Tel: (0785) 661131. Contact: Mr. J. Guest.  
**Henton & Chattell Ltd.**, London Road, Nottingham, NG2 3HW. Tel: 0602 862161.  
**W. Mountain & Son Ltd.**, Bank Avenue, Morley, Nr. Leeds. Tel: (0532) 531201-6. Contact: A.C. Mountain.  
**Rowes of Chichester**, D. Rowe & Co. Ltd., The Hornet, Chichester, West Sussex PO19 4JW. Tel: Chichester (0243) 78810. Telex: 86110.  
Contact: D. Strange or J. Burfoot.  
**W. Wilcock & Sons (Preston) Ltd.**, Walker Street, Preston, PR1 2PR. Tel: Preston 53068.

## GRASS SEED

**BRITISH SEED HOUSES LTD.**, Bewsey Industrial Estate, Pitt Street, Warrington, Cheshire WA5 5LE. Tel: (0925) 54411.  
Portview Road, Avonmouth, Bristol, Avon. Tel: (0272) 823691  
Camp Road, Swinderby, Lincolnshire. Tel: (052286) 714.  
David Bell Limited, Eastfield Industrial Estate, Penicuik, Midlothian. Tel: (0968) 78480.  
**Mommersteeg International**, Station Road, Finedon, Wellingborough, Northants NN9 5NT.  
Tel: Wellingborough (0933) 680674. Telex: 311234.

## IRRIGATION EQUIPMENT

**Cameron**, St. Richard's Road, Four Pools Industrial Estate, Evesham, Worcs., WR11 6DP. Tel: Evesham (0386) 49341 Telex: 334141.  
**Wright Rain Ltd.**, Flordon Road, Newton Flotman, Norwich, Norfolk, NR15 1QX. Tel: Norwich (0508) 470402. Telex: 975015.  
**Wright Rain Ltd.**, Bank Head, Medway, Sighthill Industrial Estate, Edinburgh, Scotland EH11 4BY. Tel: (031) 453 4789.  
**Wright Rain Ltd.**, Unit 3D3, Thorp Arch Trading Estate, Boston Spa, Wetherby, Yorks. LS23 7BJ. Tel: Wetherby (0937) 845788.  
**Cameron Irrigation**, a Division of Wright Rain Ltd., Harwood Industrial Estate, Littlehampton, West Sussex BN17 7BA. Tel: (09064) 3985. Telex: 877483.  
**Par 4 Irrigation**, Ash Grove Industrial Estate, Ash Grove, Ripon, N. Yorks. Tel: Ripon (0765) 2175.  
Supply, installation and servicing on automatic irrigation systems. Contact: E.B. Simms or L. Oyston.  
**Sports Ground Irrigation Co.**, "Hereward Lodge", Paget Road, Lubenham, Market Harborough, Leics. Tel: (0858) 63153.  
**T. & G. Turf Irrigation Services**, 8 Whitcliffe Grove, Ripon, North Yorks. Tel: (0765) 2941. Golf Course Irrigation Contractors. Vibratory Moleplough and Tractor Winch For Hire. Contact: R.N. Glover or T. Teggan.  
**Toro Irrigation Services Ltd.**, Unit 7, Millstream Trading Estate, Christchurch Road, Ringwood, Hants. BH24 3SD. Tel: Ringwood (04775) 255.  
Suppliers and installers of automatic irrigation systems. Contact: R.M. Hume.  
**Flanderblade Ltd.**, 20, Whiteacre, Littlehampton, West Sussex, BN17 7JA. Tel: (0903) 724545.  
Supply and installation of Automatic Irrigation Systems.  
**Prime Watermen Ltd.**, Wangford, Beccles, Suffolk NR34 8AX. Tel: Wangford (050 278) 481. Telex: 975731 Prime G.

## LIQUID ORGANIC FERTILIZER

**FARMURA LTD.**, Stone Hill, Egerton, Nr. Ashford, Kent. Tel: (0233) 76241. Contact: Jonathan Harmer.

## NAMEPLATES & PLAQUES

**Thos. A. Ingram & Co. Ltd.**, P.O. Box 305, 68 Soho Hill, Birmingham B19 1BB. Tel: (021) 554 4576. Full Colour Brochure Available (Commemorative Plaques, Seat Plates, etc.)

## PEAT

**FISONS plc.**, for good clean sedge peat, bagged and bulk, delivered nationwide, Sphagnum bales bagged and bulk also supplied. Professional Horticulture Department, Paper Mill Lane, Bramford, Ipswich, Suffolk IP8 4BZ. Tel: Ipswich (0473) 830492.

## PEAT — BULK

**Banks Horticultural Products Ltd.**, 36 High Street, Market Harborough, Leics. Le16 7NL. Tel: Market Harborough 64346.

## PEST CONTROL

**A. & R. Fairway Pest Control**. We offer consultancy, on site staff training, service and materials, tailored to meet the requirements of the golf course industry. Is anything harming your course?  
Phone: (0654) 710128 (24 hour service)  
**MOLES VANISH** — "KILMOL" — Mole bait makes certain. A safe and effective method (not Strychnine) £7.50 Packs — 1/2 acre (approx.) £19.25 Pack — 3 acres (approx.) (inc. P & P). CALLISTO AVIARIES (G), Lapley, Stafford ST19 9JP. Tel: (0785) 840366.

## SAND

**Joseph Arnold & Sons Ltd.**, Billington Road, Leighton Buzzard, Bedfordshire LU7 8TW. Tel: Leighton Buzzard (0525) 372264.  
Contact: P.R. Windmill.  
**Dunlop Sports Sands** — **Tilcon Special Products**, Manchester Road, Congleton, Cheshire CW12 2LU. Tel: (0260) 275214. Sand for top dressing and bunkers. Contact: Mr. Joe Stead.  
**Martin Bros. Ltd.**, 1A Clifton Street, Alderley Edge, Cheshire SK9 7NN. Tel: (0625) 584571.  
**Boughton Loam Ltd.**, Boughton Quarry, Boughton, Northampton. Tel: (0604) 847814.

Suppliers of Loams, Sports and Horticultural Dressings.  
**Bunker Sand Sale**. Ring Grant Gordon on 0375 — 858844.  
Star Group, Star House, Linford Road, Chadwell St. Mary, Grays, Essex.

## SEMI-MATURE TREES

**Eastcote Nurseries (Solihull) Ltd.**, Wood Lane off Barston Lane, Solihull, West Midlands B92 0JL. Tel: Hampton-in-Arden (06755) 2033/2034. Contact: Michael Fisher.

## SEMI-MATURE TREE PLANT & LIFT EQUIPMENT FOR HIRE

**Eastcote Nurseries (Solihull) Ltd.**, Wood Lane off Barston Lane, Solihull, West Midlands B92 0JL. Tel: Hampton-in-Arden (06755) 2033/2034. Contact: Michael Fisher.

## SOIL CONDITIONERS

**SOILIFE**: Liquid enzymes. ROMILT MARKETING for your local supplier: North Wyke Farm, Guildford Road, Normandy, Surrey GU3 2AN. Tel: Guildford (0483) 811933.

## SOIL STERILIZERS, SIFTERS & SHREDDERS

**Terra Force**, Kent Horticulture Engineers, Prospect Place, Tonbridge Road, Wateringbury, Kent ME18 5NY. Tel: Maidstone (0622) 81387. Telex: 965222. Contact: John Brough.

## SPRAYING EQUIPMENT

**Evers & Wall Ltd.**, St. George's Way, Bermuda Industrial Estate, Nuneaton, Warwickshire CV10 7QT.  
Suppliers of Hardi Knapsack, Powered and Tractor Mounted Sprayers. Enquiries for Specials welcomed.

## TEEING GROUND AREA MARKERS

**TACIT-T-MARKERS**, 3 Millers Lane, Monks Kirby, Rugby CV23 0RJ. Tel: (0788) 832166. If you have prepared the best Tees, we have the best Teeing Ground Area Markers. Also customised tees for that special golf day.

## TOP DRESSINGS — BULK & BAGGED

**Boughton Loam Ltd.**, Boughton Quarry, Boughton, Northampton. Tel: (0604) 847814.  
Suppliers of Loams, Sports and Horticultural Dressings.  
**Fen Turf Dressings Ltd.**, 36 High Street, Market Harborough, Leics. LE16 7NL. Tel: Market Harborough 64346.  
Suppliers of Fendress.

## TORO & ISEKI SALES & SERVICE

**County Mowers**, Toro Sales and Service, Main Street, Thorne, Leeds LS14 3DX. Tel: 0532-892627. Contact: David Birdsall  
**D. & J. Needham Ltd.**, Toro and Iseki, Sales, Service and Parts. (24 hr. Datapost service). Darlington Road, Middleton-St-George, Darlington, Co. Durham DL2 1LH. Tel: (0325) 332991.  
Contact: Needham or M. Grange.

## TREES, SHRUBS & PLANTS

**Notcutts Nurseries Ltd.**, Woodbridge, Suffolk IP12 4AF. Contact: John Dwyer, NDH. (Tel: 03943-3344).  
Also incorporating **Waterers Nurseries**, Bagshot, Surrey.  
**T. Hilling & Co. Limited**, Chobham, Woking, Surrey. Tel: (099 05) 7101. Contact: Mr. G. Taylor.  
**Taylor Trees**, Cliffe House, Gt. Harwood, Blackburn, Lancs. All types from 25p each. Ring for details. Tel: (0254) 884563.  
Contact: Bob Felton, Sales Manager.

## TREE TIES & GUARDS

**Toms Tree Ties**, (J. Toms Ltd.), Wheeler Street, Headcorn, Ashford, Kent. Tel: Maidstone (0622) 891111.

## TRENCHING MACHINES

**A. F. Trenchers**, Gosbecks Road, Colchester, Essex, CO2 9JS. Tel: (0206) 44411. Purpose built new, reconditioned or self-drive hire trenchers for all your drainage, irrigation, water and power supplies. Contact: Bill Baker.  
**L.D. Bourgein Oxford Ltd.**, Economical, high speed, narrow trenching. Sales or hire nationwide or we supply our own Mobile Trenching Service with operator. Contact: Roger Bourgein, South Hinksey, Oxford OX1 5BR Tel: (0865) 735420. Telex: 83147.

## TURF

**J. Brailsford**, Thrang End Farm, Yealand, Redmayne, Carnforth. Telephone: (0524) 781952. Turf suppliers to the Trade for 30 years of all types.

## TURF (SPECIALITY)

Fine purpose grown sports and amenity turf.  
**ROLAWN (TURF GROWERS) LTD.**, Elvington, York, YO4 5AR. Tel: (0904) 85661. Telex: 57796. Rolawn G.

## VERTI-DRAIN HIRE

**Ross Oliver**, Greens Verti-Drain Hire, "Greystones", Trebudan-non, Newquay, Cornwall. Tel: St. Columb (0637) 880257.  
**Brian D. Pierson (Contractors) Limited**, 27 Vicarage Road, Verwood, Wimborne, Dorset BH21 6DR. Telephone: (0202) 822372.

## WATER STORAGE

**Milne, Elan (Liquid Storage)**, Station House, Eye, Leominster, Herefordshire HR6 0DT. Tel: Leominster (0568) 3697.  
Contact: Michael D. Cocket. Suppliers of Water Tanks for Golf Courses.  
Specialised suppliers and installers of Liners for ornamental ponds, lakes and reservoirs.  
**Turf Irrigation Services Ltd.**, Betchton, Sandbach, Cheshire. Tel: (04775) 255. Suppliers and installers of automatic irrigation systems. Contact: R.M. Hume & D.W. Evans.

## WEEDKILLERS

**FISONS plc.**, for Tritox, selective turf herbicides, Herbazim total herbicide range and Greenkeeper Extra, combined weed and feed for turf. Professional Horticulture Department, Paper Mill Lane, Bramford, Ipswich, Suffolk. IP8 4BZ. Tel: Ipswich (0473) 830492.