

## HYDRAULIC LIFT VERSION OF ATCO GANGMASTER

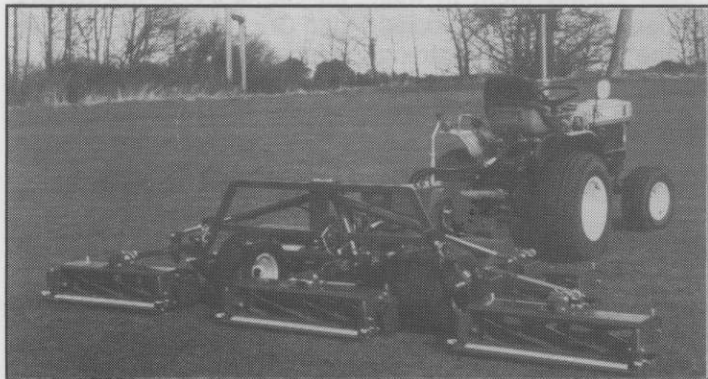
Hydraulic lift is now available on all four versions of Gangmaster, the PTO belt driven gangmower made by Atco.

For ease of operation the user will now be able to lift the cutting heads automatically without having to leave the cab, particularly useful when moving from one cutting site to another.

There are four versions of the Atco Gangmaster. It is available with either 5 or 3 cutting heads

and overall cutting widths of 138 inch and 83 inch respectively, and with either fixed or floating heads.

Special features on the Gangmaster include a belt driven system, operated from the tractor's power take off, designed to provide constant cylinder speed in all conditions with the added advantage of avoiding expensive damage if a hidden object is hit – the V belt will simply 'slip'.



*For further information contact: David Woolridge, Marketing Manager, Atco Limited, Suffolk Works, Stowmarket, Suffolk IP14 1EY. Tel. (0449) 612183, or Peter Evers/Karen Green, Edson Evers & Associates, Public Relations Consultants, Priory House, Friars Terrace, Stafford ST17 4AG. Tel. (0785) 55146.*

## BROUWER 5 GANG MOWER



*One of the Brouwer range of trailed gang mowers.*

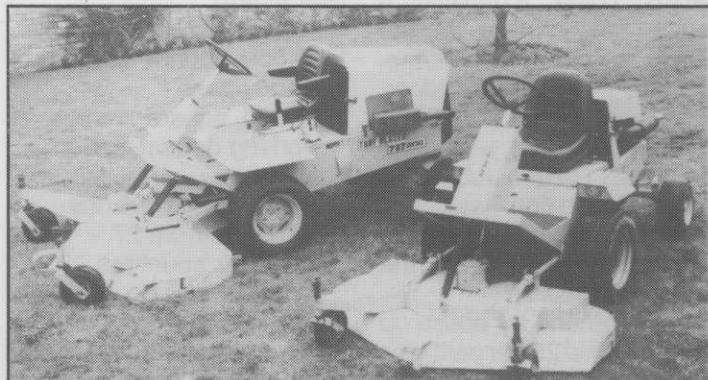
The Brouwer range of turf-care machinery has a first-rate reputation for quality and reliability and the latest tractor mount reel mower is loaded with exciting new features and options. Golf Course models are available, delivering a fine cut.

The Golf Course model is fitted with floating heads to cope with .5 inch fine cut to 2 inch rough cut. No lengthy adjustments are needed, just a flick of a lever. Optional brushes are also available which virtually eliminate tractor tracks from fair-

ways.

The most outstanding features of the new lightweight mower include simple one man 5 minute operation to detach the rear mowing units and release the tractor for other duties, full 5-gang operation with 4-gang and 3-gang modes for tight spots, simple bedknife to reel setting via one adjustment bolt, four-wheel drive traction, hydrostatic transmission and finger-tip controls for easy raising and lowering of cutting units or for transportation.

## TURFBLAZER OUT FRONT MOWERS LAUNCH IN GREAT BRITAIN – NEW RANGE NOW AVAILABLE FROM ISEKI U.K.



*The Turfblazer range of out-front professional mowers is now available in Britain with cutting widths from 1.5 to 4.5 metres wide.*

The Turfblazer range of out front mowers manufactured in America by Howard Price Turf Equipment is now available in Great Britain from Iseki U.K., giving a wide variety of cutting widths in both rotary and cylinder forms from 1.5 to 4.5 metres wide.

Three models are initially being imported by Iseki with power outputs from 22 to 78 horsepower, all hydrostatically driven and with 3 or 4 cylinder water cooled diesel engines.

The smallest of the models is the 22 horsepower Turfblazer 422 with a choice of 60" or 72" wide rotary cutting decks with options of snow blowers or front mounted brushes. The decks themselves are offset for close trimming and feature quick change height adjustment from 1.5 to 4.5 inches. All Turfblazer decks have front mounted flotation wheels for perfect contour following.

Moving up the scale is the Turfblazer 727 with its 27 horsepower engine, hydrostatic drive means the operator can vary ground speed independent of engine rpm, whilst the simple two pedal control gives instant forward or reverse. On the 727 is the option of an 84" cylinder mower in three gang configuration or a five gang set up for mowing up to 130" wide on the 40hp power unit. All the cylinders are available in either 6 or 8 blade form for cutting heights from 3/8" to 2 3/8". Verticut blades are also available as an option.

Finally, Iseki will be doing selective trials and demonstrations this year with the mighty Turfblazer 180, a 78 horsepower 4 cylinder diesel engine machine allowing rotary cutting up to 14 feet wide in one pass. The hydrostatically driven machine with hydraulically folding wings is capable of cutting up to 50 acres per day in either rotary or cylinder form.

Commenting on the introduction of the new Turfblazer range, Colin Gregory, Iseki's Sales Director, said "We took a long time deciding on a range of out front mowers. Turfblazer is well respected in America and we feel this range offers the professional operator a choice of cutting widths, plus excellent economy and durability. We'll be only too pleased to show the Turfblazer range to you and demonstrate why we believe it offers so much".

Further details are available from Iseki U.K. on 0480 218100.

The result is a quality mower that is economical, versatile and dependable. Turfand Professional, sole UK distributors of the Brouwer range of machinery, provide a first-class spares facility and back-up service through their nationwide team of representatives. This expertise, added to the reliability and dependability for which the Brouwer range has become renowned, means that the customer has at his disposal a complete package that is second to none.