

## Kubota Tractors for Turnberry



When George Brown arrived at Turnberry two years ago from Broom Park in Kent, he was faced with the situation of taking over a championship course which needed an equipment update.

The new owners – NITTO KOGYO of Tokyo were positive in their forward planning. Turnberry had to be, and remain, a major course and a con-

tinuing venue for the Open Championship.

Budget plans were agreed and a schedule of investment drawn up to meet the new owners commitment to the future of golf in Scotland.

Included in the schedule of investment was a requirement for two new tractors.

After looking at all available tractors and many

years of practical experience, George was convinced that the ideal golf course tractor was in the 30-35hp mark, four-wheel drive, power steering and low PSI.

At SCOTSTURF '87 at Ingliston, George took the opportunity to take a close look at various tractors on the market. Attracted to the overall package Kubota had to offer, an

appraisal was made of the Company, its product range, and Dealer back-up. Subsequently, a demonstration was arranged at Turnberry of Kubota products suitable for the course requirements.

These demonstrations led to the purchase of two Kubota L2850 tractors, one fitted with a back-hoe and loader.

### AGRIMASTER® & AGRICROP®

Liquid Growth Stimulants

#### TIP THE SCALES IN YOUR FAVOUR

Two invaluable ingredients in one container!  
Farmyard manure PLUS seaweed make the perfect foliar spray for fairways, greens, sports & recreation grounds and all amenity purposes.

- ENCOURAGES ROBUST, EVEN TOP GROWTH
- TAKES UP LESS STORAGE SPACE
- LOWER OUTLAY
- IMPROVES ROOT STRUCTURE
- HIGHER NUTRIENT VALUES
- LABOUR SAVING

# 2 GALLONS PER ACRE

## 6 PINTS (3.4 LITRES) TREATS 1800 SQUARE YARDS

AGRIMASTER® is a 100% organic formulation of manure and seaweed containing N[8-8%]PK, growth stimulants and a range of trace elements, all of natural origin.

AGRICROP® has similar ingredients but with added nitrogen [19.5%]. Both products are available with extra iron.



#### AGRLAND

ORGANIC FERTILIZERS LTD  
BLUE ROOF FARM, THROOP ROAD, THROOP  
BOURNEMOUTH, DORSET BH8 0DW  
Telephone: Bournemouth (0202) 532291  
Telex: 418297 CHACOM G  
Telefax: (0202) 298676 Groups 2-3

® Registered Trademarks. Patent pending.

# IoG's GOLDEN YEAR

Paradoxically the 43rd annual IoG Sports & Leisure World Trade Exhibition – which takes place at the Royal Windsor Racecourse, Maidenhead Road, Windsor, Berkshire from 20th-22nd September 1988 – is celebrating its Golden Jubilee!

The Exhibition was first held in 1938 (the war and its aftermath account for the seven lost years).

With demand for space up by a massive 25 per cent, this

year's exhibition is now all set to be the industry's biggest ever event.

- \* 388 exhibitors
- \* 46,000 square metres of stand space
- \* 16,000 square metres of working demonstration areas
- \* two covered pavilions
- \* exhibitors from 27 overseas countries.

To this must be added a record number of colleges which will be featured in the

extended Educational and Training section. They include:

Askham Bryan, Aylesbury, Berkshire, Cambridgeshire, Cheshire, Evesham, Lancashire, Merrist Wood, Oaklands, Pershore, Plump-ton, Rycotewood, Somerset, South London, Sparsholt, West Sussex and Writtle.

Also joining them in that section, will be such bodies as the Agricultural Training Board, BALI South Thames

Training, the City & Guilds of London Institute, Garden Machinery Association, National Playing Fields Association, National Turfgrass Council and the Sports Turf Research Institute.

The education displays will be supported by a programme of 18 mini-lectures covering such topics as Winter Games, Bowling Greens and Cricket Squares maintenance, which will be held in the Lecture Theatre.

## JOHN SHAW OPEN DAY



*Mr Andrew Darlow (TORO) demonstrating the 220D to Mr Seymour of Hastings Borough Council who is awaiting delivery of his 220D.*

Although the recent J.S. Open Day did not enjoy the best of weather this did nothing to dampen the numbers nor indeed the enthusiasm of everyone concerned. In fact around 80 invited guests including Local Authorities, Greenkeepers and Groundsmen seemed to treat the weather with the contempt it deserved. No doubt because there was plenty of machinery on view to raise the spirits, not to mention the lunch which, once again, was splendid.

Several products were demonstrated including the Groundmaster 220D a recent addition to the TORO stable. This 3 cylinder diesel engine machine is highly manoeuvrable and is fast gaining praise. The 52 in. or 62 in. rear discharge cutter decks which may be fitted, are an addition to the range and a unique

flotation system ensures improved ground following.

The Flagship of the TORO range the Reelmaster 450D was also on show. This high output all-hydraulic mower powered by a 50hp Mitsubishi engine with power steering travels up to 15mph and will mow up to 10.5 acres per hour, 5 or 7 bladed cutting cylinders are available and the heads can be either fixed or floating.

Within the TORO section of Lely the New Reform-Metrac 4-wheel drive tractor unit has been added to the range as it will enhance and complement the existing TORO products.

The Metrac is a 38hp 4-wheel steer unit which is ideally suited for banks and difficult terrain work which can be fitted with flails or rotaries or any other front or rear mounted attachment.

## KAWASAKI MEETS THE DEMAND



*Readily identified by the twin headlamps mounted below the front carrying rack, the Kawasaki KLF220 is a very sophisticated machine available at the value for money price of £1,899 plus VAT.*

Over the last few months, Kawasaki have been embarrassed by their KLF185 ATV – or rather by their lack of stock. For this well-proven work-horse has proved such excellent value for money that they had completely sold out, while still waiting for the replacement model.

The good news is that the new model (pictured) not only still provides superb value for money (it retails for £1,899 plus VAT), but also incorporates many worthwhile advantages.

The enlarged engine capacity gives a worthwhile boost in torque to this reliable four stroke engine, which retains both electric and recoil start systems. The KLF220 retains independent swingarms with dual shock ab-

sorbers for the front suspension, but at the rear there is now Kawasaki's refined Quad-Link system that offers a progressive, rising-rate action. Previously, stopping was via a single rear drum brake, now this is supplemented by drum brakes for each of the front wheels.

The new styling is practical as well as attractive: twin headlamps provide a wider spread of light than the original single unit.

Features that remain unchanged include the five speed gearbox with automatic clutch and reverse gear, shaft final drive, and the use of a vibration-reducing balance shaft in the well proven engine.

## HYDRAULIC LIFT VERSION OF ATCO GANGMASTER

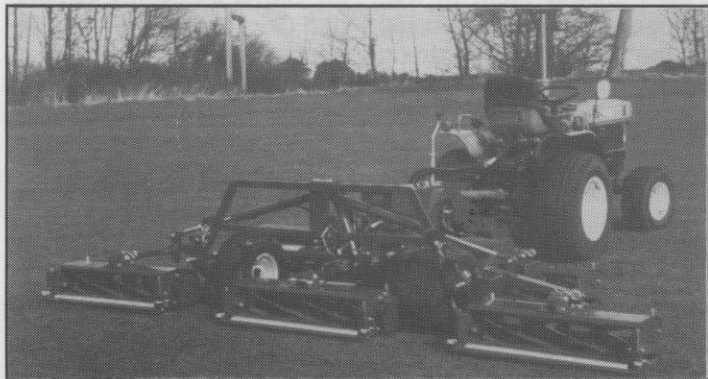
Hydraulic lift is now available on all four versions of Gangmaster, the PTO belt driven gangmower made by Atco.

For ease of operation the user will now be able to lift the cutting heads automatically without having to leave the cab, particularly useful when moving from one cutting site to another.

There are four versions of the Atco Gangmaster. It is available with either 5 or 3 cutting heads

and overall cutting widths of 138 inch and 83 inch respectively, and with either fixed or floating heads.

Special features on the Gangmaster include a belt driven system, operated from the tractor's power take off, designed to provide constant cylinder speed in all conditions with the added advantage of avoiding expensive damage if a hidden object is hit – the V belt will simply 'slip'.



*For further information contact: David Woolridge, Marketing Manager, Atco Limited, Suffolk Works, Stowmarket, Suffolk IP14 1EY. Tel. (0449) 612183, or Peter Evers/Karen Green, Edson Evers & Associates, Public Relations Consultants, Priory House, Friars Terrace, Stafford ST17 4AG. Tel. (0785) 55146.*

## BROUWER 5 GANG MOWER



*One of the Brouwer range of trailed gang mowers.*

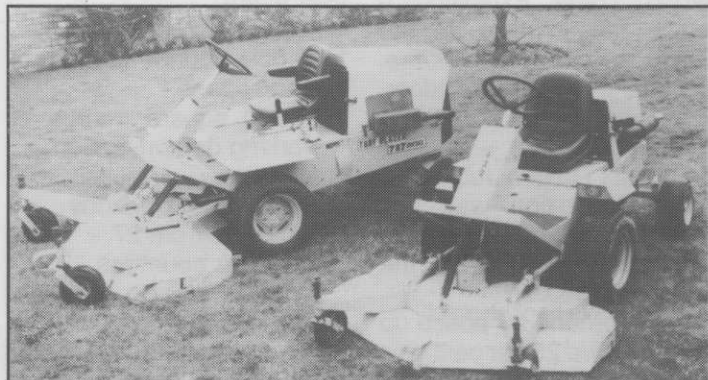
The Brouwer range of turf-care machinery has a first-rate reputation for quality and reliability and the latest tractor mount reel mower is loaded with exciting new features and options. Golf Course models are available, delivering a fine cut.

The Golf Course model is fitted with floating heads to cope with .5 inch fine cut to 2 inch rough cut. No lengthy adjustments are needed, just a flick of a lever. Optional brushes are also available which virtually eliminate tractor tracks from fair-

ways.

The most outstanding features of the new lightweight mower include simple one man 5 minute operation to detach the rear mowing units and release the tractor for other duties, full 5-gang operation with 4-gang and 3-gang modes for tight spots, simple bedknife to reel setting via one adjustment bolt, four-wheel drive traction, hydrostatic transmission and finger-tip controls for easy raising and lowering of cutting units or for transportation.

## TURFBLAZER OUT FRONT MOWERS LAUNCH IN GREAT BRITAIN – NEW RANGE NOW AVAILABLE FROM ISEKI U.K.



*The Turfblazer range of out-front professional mowers is now available in Britain with cutting widths from 1.5 to 4.5 metres wide.*

The Turfblazer range of out front mowers manufactured in America by Howard Price Turf Equipment is now available in Great Britain from Iseki U.K., giving a wide variety of cutting widths in both rotary and cylinder forms from 1.5 to 4.5 metres wide.

Three models are initially being imported by Iseki with power outputs from 22 to 78 horsepower, all hydrostatically driven and with 3 or 4 cylinder water cooled diesel engines.

The smallest of the models is the 22 horsepower Turfblazer 422 with a choice of 60" or 72" wide rotary cutting decks with options of snow blowers or front mounted brushes. The decks themselves are offset for close trimming and feature quick change height adjustment from 1.5 to 4.5 inches. All Turfblazer decks have front mounted flotation wheels for perfect contour following.

Moving up the scale is the Turfblazer 727 with its 27 horsepower engine, hydrostatic drive means the operator can vary ground speed independent of engine rpm, whilst the simple two pedal control gives instant forward or reverse. On the 727 is the option of an 84" cylinder mower in three gang configuration or a five gang set up for mowing up to 130" wide on the 40hp power unit. All the cylinders are available in either 6 or 8 blade form for cutting heights from 3/8" to 2 3/8". Verticut blades are also available as an option.

Finally, Iseki will be doing selective trials and demonstrations this year with the mighty Turfblazer 180, a 78 horsepower 4 cylinder diesel engine machine allowing rotary cutting up to 14 feet wide in one pass. The hydrostatically driven machine with hydraulically folding wings is capable of cutting up to 50 acres per day in either rotary or cylinder form.

Commenting on the introduction of the new Turfblazer range, Colin Gregory, Iseki's Sales Director, said "We took a long time deciding on a range of out front mowers. Turfblazer is well respected in America and we feel this range offers the professional operator a choice of cutting widths, plus excellent economy and durability. We'll be only too pleased to show the Turfblazer range to you and demonstrate why we believe it offers so much".

Further details are available from Iseki U.K. on 0480 218100.

The result is a quality mower that is economical, versatile and dependable. Turfand Professional, sole UK distributors of the Brouwer range of machinery, provide a first-class spares facility and back-up service through their nationwide team of representatives. This expertise, added to the reliability and dependability for which the Brouwer range has become renowned, means that the customer has at his disposal a complete package that is second to none.

# New British Triplex to Hit the Golf Market

A new greens mower has been announced by Huxleys Grass Machinery, the Hampshire based family company at Alresford, known best in this country as the main Cushman dealers.

The independent British firm, headed by Ted Huxley and his two sons, have had the machine under wraps for some time to ensure that the principal requirements demanded by greenkeepers were met.

It is a no frills machine, easy to use, quieter than other diesels, economic in running costs, there is a first class service and parts back-up, and the machine has front wheel drive and rear steering.

The white painted triplex, designed by a team of engineers under the direction of Ed Fox, will be priced at around £10,000 when it goes into full production

prior to being launched at the IOG Windsor Show in September.

In a market dominated by Jacobsen, Toro and Ransomes, the Huxley Three 58, so called because of the three cutting cylinders and the 58 inch cutting width, is powered by a Kubota diesel engine.

From tests carried out on a number of golf courses in the south of England it is said to use only 1.6 litres an hour in fuel, which, compared to the petrol engines of other machines can save a golf club around £500 a year in running costs.

The Three 58 has hydrostatic drive with separate pedals for forward and reverse, stopping by easing off the drive pedal. Cutting speed is around 3 mph at 180 cuts per yard, with a top travelling speed between greens of 8.5 mph.



*The Huxley Three 58 Greensmower*

*A full report on the Huxley Three/58 will appear in the July/August issue.*

LLANDUDNO (Maesdu) GOLF CLUB Ltd.

*Urgently require an ambitious, enthusiastic and experienced*

## HEAD GREENKEEPER

with course management qualifications.

The golf course is mainly meadowland with a few holes of links texture.

Approximately 100 acres. SSS 73.

Remuneration by negotiation.

No accommodation available but assistance will be given in relocation.

*Applications together with full C.V. to:*

THE SECRETARY  
LLANDUDNO (Maesdu) GOLF CLUB Ltd.  
HOSPITAL ROAD  
LLANDUDNO  
GWYNEDD  
N. WALES LL30 1HU

## Turf who



FOR SPORTS SURFACES  
FOR BOWLING GREENS  
FOR AMENITY AREAS

The solution to your "green" problem.

**Turfland**  
*where the grass is always greener*

The country's leading turf nursery.

Nurseries in the prime grass-growing counties in England

Head Office: Turfland, Dutton, Warrington, Cheshire, WA4 4LL.  
Tel. (0928) 719336 (6 lines)