

**WHY ACCEPT**

- Flooded Greens?
- Ponds on the fairways after heavy rain?
- Bunkers filled with water?
- Wear and tear due to traffic over water logged grass?



- ★ Removes surface water at up to 60 gallons per minute and pumps it out of harm's way
- ★ New special attachment for clearing bunkers
- ★ £1750 is a small price to pay for a Hoverdry machine
- ★ Special one-month trials available

**As used by the PGA and the R & A**

For further information please contact:  
Richard Nissen, Sales Director, Hoverdry Ltd, 1st Floor,  
35 Piccadilly, London W1V 9PB Tel: 01 439 8985

**Your Chemical Storage Problems.....**

**SOLVED**

with a practical, secure workbase from

**CLEVELAND SITESAFE LTD**



For further information on our wide range of units

**PLEASE CONTACT**

Cleveland Sitesafe Ltd.,  
High Farm, Old Lackenby,  
Eston, Middlesborough,  
Cleveland. TS6 8DN.

Telephone:  
(0642)  
453629

# Rufford Top-Dress Supplies

L I M I T E D

**BRITAINS  
No1**

## Rufford Screened Soil- Sedge Peat

*Quality, Service,  
Sheer value for money.*

**Unique quality  
guarantee and fast  
delivery nationwide**



NUCKS WOOD  
QUARRY,  
WIGGINS LANE,  
RUFFORD,  
Nr. SOUTHPORT,  
LANCS., L40 1UJ.

TELEPHONE:  
(0704) 821314

WE CAN PROVIDE THE WIDEST RANGE OF TRENCHING EQUIPMENT AND SPARE PARTS AVAILABLE IN THE U.K. TODAY... BACKED BY EXPERIENCE SECOND TO NONE!



PEDESTRIAN TRENCHERS  
12 - 18 hp

TRACK-MOUNTED  
TRENCHERS 165 - 750 hp

TRAC TRENCHERS  
30 - 90 hp

**MAYFIVE LIMITED**  
DOCK ROAD INDUSTRIAL ESTATE,  
CONNAH'S QUAY, DEESIDE,  
TEL: 0244 819891  
FAX: 0244 810863

# WESSEX *Pick-up Mower*

for one pass mowing, collection and scarifying — even clears autumn leaves!



The GR Pick-up Mower (available in a range of sizes from 98cms to 207cms) is a versatile machine ideal for golf courses, sports grounds, and estates. Based on the 'G' series flail mower, the rotor has closely spaced back to back flail blades which leave a fine finish. The Wessex GRD mower is really a flexible system which adapts to the changing requirements of the seasons, offering a choice of rotors, grass collection facility, and scarifying tines for clearing thatch from golf course fairways, cricket outfields and similar areas. Cut material can be dumped from the tractor seat.

Full details from: **WESSEX FARM MACHINERY SALES CO.**  
Trading Estate, Oakhanger Road, Bordon, Hampshire GU35 9HH. Tel: 042 03 8111

Send now for our new catalogue and for detailed information on Wessex mowers.





Lindum are renowned for the high quality of their seeded turf. And their customer service.

It's their knowledge and expertise, their groundsmanship skills, the quality of their seed varieties and fertilisers, and their innovation .... these are the grass roots from which Lindum's success has grown and flourished.

Their complete turf service includes:

## Quality Seeded Turf

The range includes:

PAF (Poa Annuua Free), for finest golf and bowling greens.

HERITAGE for luxury lawns and prestigious applications.

LG1 for golf tees.

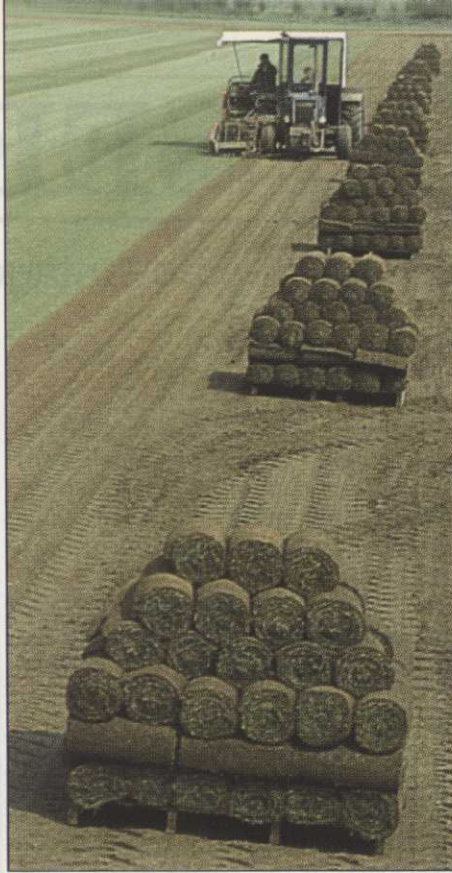
SPORTURF for sports pitches.

LG2 for low maintenance amenity areas.

## 'Sodnet' Netting

Designed to prevent soil bed erosion: it acts as a mulch, reduces moisture loss, works as a

holding medium for the root mat and enables early lifting. Grass seeding of land reclamation areas will benefit by the use of 'Sodnet' to stabilize the soil surface, particularly on sloping sites.



## Seed Prescriptions

Designed for customers' special needs.

Varieties are chosen for their disease resistance, winter hardiness, drought tolerance, growth pattern, colour and compatability and high germination levels.

The vigour-proven seed is cleaned to a high purity standard prior to prescription mixing.



## Fertilisers

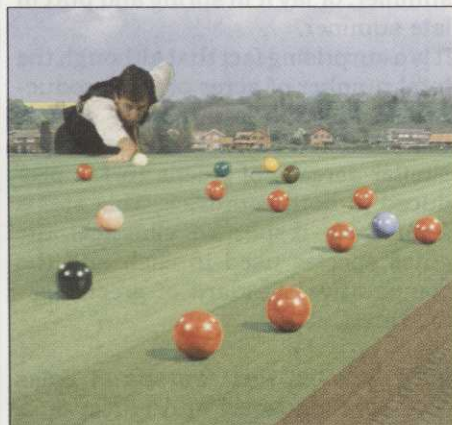
The Lindum formulations are designed to give turf and seed healthy growth, good leaf colour and resistance to disease and drought.

## Preparation and After Care Service

Lindum will provide advice on the preparation of new sites, will carry out a soil analysis and offer an agronomy advisory service.

**LINDUM HAVE THE ANSWER.  
THE EXPERTISE  
AND THE COMMITMENT**

# The LINDUM PORTFOLIO OF PRODUCTS AND SERVICES for PERFECT TURF



**LINDUM** Seeded Turf  
FOR LANDSCAPE AND LEISURE

Church House, Horkstow, Barton on Humber,  
South Humberside, DN18 6BG

Telephone (065 261) 329 or 564 Fax 065 261 447



# TURF OR SEED

Robert W. Laycock examines the advantages of both methods and new species

**T**he method of establishing grass on the playing surface is one of the major decisions in the construction of a new golf course. It affects the quality of the game, as well as the time taken to bring the course into play.

In the United Kingdom the choice is simply whether to turf or to use seed. Elsewhere in the world there is a further option - the use of "sprigs" or stolons.

Whichever method is used, it is vital that seed should not be sown nor turf laid until the greenkeeper is absolutely sure of the condition of the underlying drainage system, the quality of the rootzone material and the evenness of the surface levels.

In theory, the use of seed gives the user the widest choice of species and cultivars, and it should be possible to pick and choose the best available for each particular situation. In practice, however, the constructor tends to choose from the ranges of proprietary mixtures offered by each of the major seed houses.

In devising their mixtures the seedsman inevitably has to compromise between availability and price. Some desirable cultivars are effectively exclusive to a seedsman and so the "ideal" seed mixture remains hypothetical. Even so, the seed guide issued by the Sports Turf Research Institute each year enables an objective comparison to be made among the available mixtures.

Given time, seed can give a first class surface. It does not introduce any undesired soil types to the course and of course is by far the cheapest technique. Unfortunately in the British Climate, seed is significantly slower than turf, whereas in other parts of the world, where water temperatures prevail, greens grown from seed can be in play in a matter of weeks and turfing becomes unnecessary.

Turf grown on a mulch, possibly with a reinforcement of netting, and sold when a few weeks old, can give good results on the golf course. However, because it consists of fine-leaved seedlings any coarse grass present in the sown mixture may not become apparent until the turf has matured on site.

Seedling turf is vulnerable to desiccation at the establishment phase, but gains a few weeks growth over seeded areas. It is debatable whether the benefits of this outweigh the high cost.

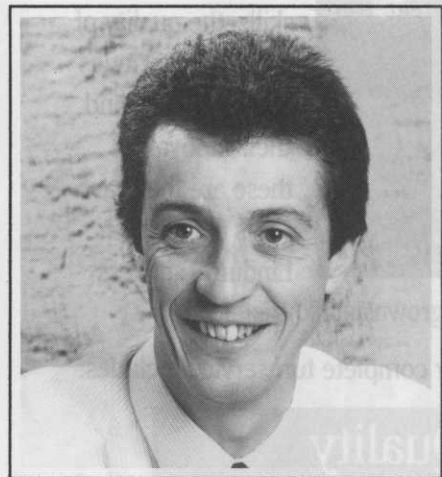
In the UK several companies producing this type of turf were in operation in the mid - 1970's, but none of these original companies are still in existence, though there seems to be a recent revival of interest from new companies. A French technique involving the use of seed sown into a composted pine bark mulch was also developed in the 1970's and is now being promoted in the USA as well as in mainland Europe.

In spite of this, seedling turf is not suited to large-scale production and will therefore inevitably remain a minority interest among turf growers. Pressure to get new golf courses into play as quickly as possible means that more and more greens in the UK are being turfed using cultivated turf. In Britain it is perfectly feasible to lay turf in autumn and putt on it by early summer; or lay it in spring and putt in late summer.

It is a surprising fact that although the total number of acres of turf production in the USA is massively greater than that in the UK, I estimate that a similar acreage of greens turf is produced in both countries. This stems from their respective climates, the grass species used in each and the comparative standard of greenkeeping care.

**C**ultivated turf consists of grass specially sown and grown on a natural soil. Turf is harvested when it is mature, which gives greater strength to the established playing surface and allows heavier use at an earlier date than with other techniques. A range of grass mixtures is available to suit the majority of possible uses.

Choosing a supply of cultivated turf depends on the soil on which it is grown as much as the grasses it contains. There is no point in laying turf grown on a heavy soil on to a new green built with a free-draining rootzone. Water simply would not drain



Robert W. Laycock

from the surface, playing days would be lost and the sward would deteriorate in play, no matter how good it was when purchased. The best way to choose turf if you are at all unsure is to inspect the field from which your order is to come, as close as possible to harvest date. Any reputable turf grower will welcome the opportunity to show you his fields. There is no point in looking at turf six months ahead of purchase. Fields can vary and only the one from which the customer's turf will come is of real interest to him.

In the UK and at golf clubs in Europe with a British influence, the traditional mixture for creating a putting surface is fescue/bent. The fescues may be a combination of Chewings fescue and slender creeping red fescue while the bent is predominantly browntop (known in the US as Colonial bent), whether "Highland" (*Agrostis castellana*), one of the *Agrostis capillaris* cultivars, or a native type. Frequently annual meadow grass has invaded greens over the years, but sensible management can minimise its extent.

**I**n more continental temperate climates, creeping bent grass, (*Agrostis stolonifera*), is used for greens, particularly in the USA where it is virtually exclusively used. "Pennncross" is the best known cultivar, though other similar types are available. Seed of "Pennncross" was first released in the

USA in 1954 which makes it one of the oldest cultivars on the market.

Because there is only one type of grass on a creeping bent grass green it has a very uniform texture, albeit coarser than the finer fescues and browntop bents. Different forms of creeping bent in the green can cause segregation and a patchy appearance.

With access to a particularly good strain of creeping bent grass one could create a green vegetatively, using pieces of stolon as cuttings which would rapidly fill in to make a full grass cover. A number of vegetatively propagated strains of creeping bent were selected in the USA in the first half of this century to enable greens to be made in this way. In the UK this technique was restricted to the infamous "Emerald Velvet" bent grass which was available by mail order briefly about thirty years ago, but is still referred to in the amateur gardening textbooks as a way of making a new lawn.

**A**s American golf course designers have had a greater impact on European golf they have brought with them the grasses they know best. These have begun to increase in prominence over the grasses traditionally used for golf in mainland Europe, which had originally been introduced as a result of British influence. Thus creeping bentgrass is likely to become more common in Europe.

In Southern Europe, North Africa and other sub-tropical and tropical areas the most usual grass for golf greens is Bermuda grass (*Cynodon* spp). Like creeping bent it can be propagated by

seed or vegetatively, the better types being established from sprigs and sold as sprigs or turf.

As more golf clubs are built around the Mediterranean the improved Hybrid Bermuda grasses, originally bred in Georgia, USA have been introduced and are now widely used in the area. One drawback is that they become brown and dormant in temperatures below about 10 degrees centigrade.

As with greens there is a choice of grasses suitable for use on tees in the UK. Traditionally a mixture of red fescue and browntop bent has been used, similar to that on the greens. To add resilience to the sward smooth-stalked meadow grass may be added. A radical departure from this is the use of a perennial ryegrass turf on the tee. Forgetting the tradition of the game and looking objectively at the required characteristics of a tee, many people find that the best of the modern, fine-leaved ryegrasses provide a combination of features which are beneficial on the tee, particularly when used with a rhizomatous grass such as creeping red fescue which can help repair divots. A number of the top clubs are trying this kind of seed mixture, particularly on par 3 tees.

On North European 'American - style' courses the tees tend to be creeping bent or smooth-stalked meadow grass, both of which are also able to repair damage. Between the latitudes of 35 degrees N to 35 degrees S, Bermuda grass is more appropriate because of its heat tolerance.

Whether turfing or seeding, the results depend on the initial preparation and the standard of greenkeeping af-

**Robert Laycock B.Sc. M.Sc. D.I.C., C.Biol., M.I.Hort., is a chartered biologist and turf grass scientist. He has been Technical Director, Rolawn (Turf Growers) Ltd since 1987. A graduate in botany from University College, London he worked for the Field Studies Council before carrying out post graduate work on close-mown turf at Imperial College. Later he undertook research at the Sports Turf Research Institute at Bingley for six years.**

**His main responsibility at Rolawn is the development and sales of turf for the professional sporting market and overseeing the quality control processes. He also provides technical advice for customers and staff and was responsible for introducing the concept of washed turf to the UK.**

**Robert is also much in demand as a lecturer on sports turf and lawn care. He has published scientific papers on turf grasses, and numerous articles on turf management for specialist journals and features on lawns for the general public.**

ter establishment, as much as the grasses used, the temperature and availability of water. Choosing the most appropriate material is the key to success.

## FROM THE FAIRWAY

Dear Sir,

Whilst reading the very interesting March issue of 'the Golf Course' I was surprised to read under Topical Tips your recommendations in response to the greenkeepers question about the Certificate of Competence. The advice you gave was inaccurate.

I will work through it step by step.

It is wrong to refer to the age of 25, as that was the starting age and will increase by one year each year.

1. Those born before 31 December 1964 and are spraying on their own or their

employers land (owned or rented) do not require a Certificate of Competence and do not need to be supervised.

2. Those born after 1 January 1965 require a Certificate of Competence - unless they are being supervised by a certificate holder.

3. Those born before 31 December 1964 may not unless certificated supervise an operator who was born after 1 January 1965.

4. All contractors whatever their date of birth must be certified. A contractor is an operator paid or unpaid who is applying

pesticide to land which is not owned or rented by themselves or their employer.

There is so much confusion about the legislation that I hope you will forgive me for attempting to put the record straight.

**G. Keith McKee**

**European Technical Manager  
Fisons plc Horticulture Division**

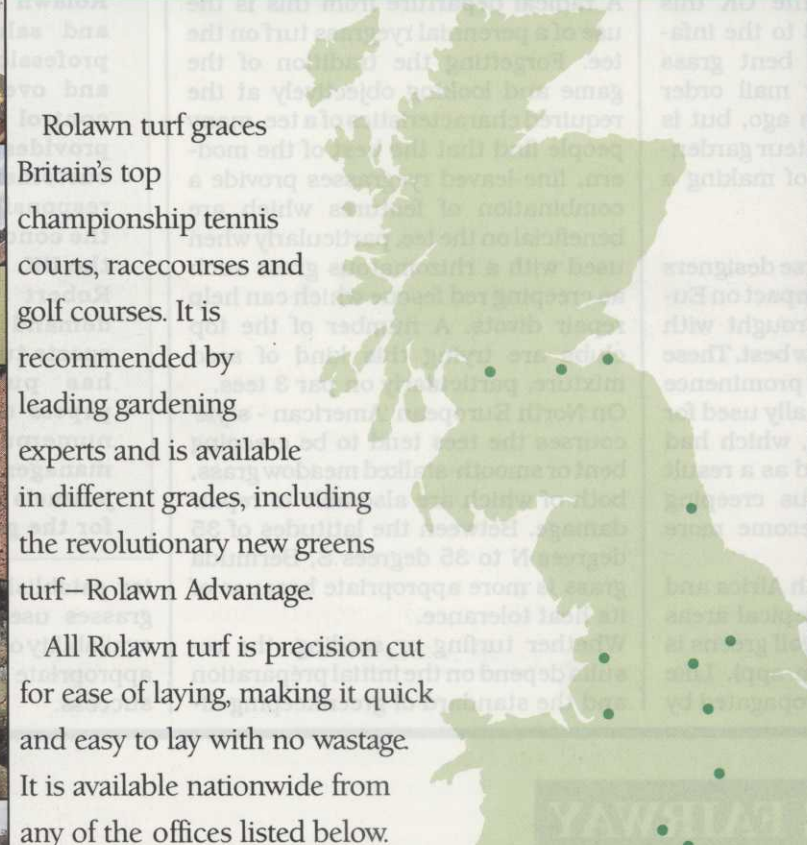
*Editors Note:*

*Your guidance is much appreciated. The legislation is complicated and piecemeal, but in time all greenkeepers will be required to undertake training regardless of age. There is no substitute for sound knowledge and skills.*





# YOUR NATIONAL GOOD TURF GUIDE



Rolawn turf graces Britain's top championship tennis courts, racecourses and golf courses. It is recommended by leading gardening experts and is available in different grades, including the revolutionary new greens turf—Rolawn Advantage.



All Rolawn turf is precision cut for ease of laying, making it quick and easy to lay with no wastage. It is available nationwide from any of the offices listed below.



You can obtain further information and technical advice from our Head Office in York.



## Rolawn®

- Rolawn Depots • Bedfordshire Tel: (0767) 50155 • Birmingham Tel: (0562) 700988
- Bristol Tel: (0272) 236620 • Colchester Tel: (0206) 212090 • Coventry Tel: (0203) 635733
- Edinburgh Tel: (031) 335 3164 • Glasgow Tel: (041) 552 8463
- Herts & London (North) Tel: (0727) 22139 • Kent & London (South) Tel: (0959) 32944
- Leeds Tel: (0532) 703296 • London (East) Tel: (0277) 811566 • London (West) Tel: (01) 569 2762
- Newcastle Tel: (091) 493 2226 • Norwich Tel: (0603) 260927 • Nottingham Tel: (0602) 491108
- Oxford Tel: (0865) 730101 • Preston Tel: (0772) 628053 • Scotland (South) Tel: (062 085) 625
- Sheffield Tel: (0709) 820671 • Southampton Tel: (0703) 629028
- Stockton-on-Tees Tel: (0642) 616057 • Surrey Tel: (0483) 810851
- Warrington Tel: (0925) 837190 • Yorkshire & Humberside Tel: (0904 85) 661

**EUROPE'S FINEST TURF**  
 ROLAWN LTD., ELVINGTON, YORK, ENGLAND YO4 5AR TEL: (0904-85) 661





# ISEKI

## The driving force



### TU

The midrange maestros – the Iseki TU range offers you a choice of manual or hydrostatic drive, with models from 19-27 horsepower all designed for more productivity and performance, whatever the task.



### DIESEL Rider

For professional or domestic grass cutting the Iseki Diesel Rider means you can cut and collect in one productive pass. A choice of 13-15 horsepower models with manual or hydrostatic drive.



### TA

Iseki TA Tractors mean big productivity on courses or in parks – three models from 33 to 48 HP, all with four wheel drive and Iseki shuttle drive gearboxes.

The original compact tractor – these 16-18 horsepower machines offer you real versatility with 2 or 4 wheel drive and front, mid or rear mounting points.

### TX



Iseki have a range of tractors to suit your needs. From 14-48 horsepower you'll find no more versatility, no more technical excellence, no better support and no better finance schemes. That's why Iseki are the driving force - because no one looks after your compact tractor needs more than Iseki.

Iseki UK Ltd, Broadway, Bourn, Cambridge, CB3 7TL. Telephone 0954 718981. Fax 0954 719731.

Please send me more details on the Iseki range of Tractors.  
I am particularly interested in the following ranges:

Diesel Rider     TX     TU     TA  
 Name \_\_\_\_\_  
 Address \_\_\_\_\_  
 Postcode \_\_\_\_\_  
 Tel No. \_\_\_\_\_

TRACTORS · MOWERS · POWER EQUIPMENT · ATTACHMENTS

# POWERED TRACTORS, COMPACT AND VERSATILE

When it comes to mowing fairways on your golf course, there is probably no better machine around than the Iseki range of Compact Tractors.

Iseki, one of Japan's foremost manufacturers of Compact Tractors now have a full range of tractors for a number of versatile jobs around the course, including fairway mowing. More normally, specialist equipment might be used, but one of the new TA tractors from 33 to 48 horsepower, equipped with a five gang

back hoe, and the TA tractor becomes a real economic investment for your golf course.

Beyond the Iseki TA series is the smaller TU series, launched successfully two years ago, at the Institute of Groundsmanship show at Windsor. This range of tractors is available with either syncromesh or hydrostatic stepless transmission and has horsepower from 19 to 27. With the TU series you can mount the machines at the back, at the front or in the middle to combine



*Iseki's new TA Tractors are especially suitable for mowing fairways where they power from 33 to 48 horsepower and four wheel drive*



*Iseki's TX Tractors are available with wrap around cylinder mowers for fairway or green surround moving*

mower can be just as productive, and more importantly equally at home on other jobs around the course such as scrub cutting, hedging, ditching and course preparation.

The Iseki TA series comprises of three tractors from 33 to 48 horsepower all with four wheel drive and high torque, but economic, diesel engines. Take for instance the latest introduction to this range, the TA545, this 48 horsepower, 4 cylinder diesel engine tractor, has a job around the course. Uniquely this shuttle gear box allows you to work extremely quickly and economically with a loader or alternatively using its PTO power to power trail gang mowers. Turning circle is especially tight on the TA545, and you will find no more comfortable cab, with wide opening doors, front and rear screens and electronic PTO and power steering, it must be one of the most comfortable operator environments around. Combine this with the full range of attachments available from Iseki including Hedgetrimmers for either hedgetrimming or flail mower on road side verges, a full range of flail or rotary mowers including flail collection machines and a front mounted loader or rear mounted

up to three operations in one path. Iseki have built into these tractors, good features, such as a step thru' operators platform and power steering to make them especially easy to operate and especially productive.

Quite recently, Iseki moved into spacious new premises at Bourn in Cambridgeshire to give more of a service to their well established customers throughout Great Britain and

indeed Europe.

These new premises include, some 15000 square feet of storage space and has meant a greatly increased range of service parts, as well as a demonstration and educational facilities for dealer and customer training.

Iseki who are sponsors of the Iseki Greenkeepers golf tournament in Britain have made considerable steps in the golf course market over recent years and with the introduction of the new TA series their tractors from 19-27 horsepower and the top selling TX tractors, the original compact tractor, from 16-18 horsepower plus a range of attachments for all types of jobs around the course, really are the driving force in Golf Course management, in truth you will probably find no more interesting and innovative machines to work on your course than Iseki - the Driving Force in Golf Course Maintenance.

*Below: Iseki's innovative new TU Tractors are available from 19-27 horsepower*





# BUYERS GUIDE - BUYERS GUIDE - BUYERS GUIDE

## BARK AND BARK BASED PRODUCTS

### CAMLAND PRODUCTS LTD

Fordham House,  
Fordham, Cambs. CB7 5LN  
Tel: 0638 721100  
Telex: 81254

### MELCOURT INDUSTRIES LIMITED

Tetbury, Gloucestershire.  
GL8 8JG Tel: (0666) 502711  
Telex: 43144  
Fax: (0666) 504398

### PRACTICALITY BROWN

P.O. Box 294,  
Iver, Bucks. SLO ODD  
Tel: 0753 652022  
Fax: 0753 653007

## BRITISH ASSOCIATION OF GOLF COURSE ARCHITECTS

Full members

### J. HAMILTON STUTT - HAMILTON STUTT & CO.

Bergen 12, Bingham Ave,  
Poole, Dorset. BH14 8NE  
Tel: 0202 708406

### DONALD HARRADINE PETER HARRADINE

CH6987, Caslano,  
Switzerland.  
Tel: 091 711561

### FRED HAWTREE, MARTIN HAWTREE, SIMON GIDMAN HAWTREE & SON

5 Oxford Street, Woodstock,  
Oxford. OX7 1TQ  
Tel: 0993 811976

### DONALD STEEL

The Forum, Stirling Road,  
Chichester, West Sussex.  
PO19 2EN  
Tel: 0243 531901

### TOM MCAULEY

38 Moira Drive, Bangor,  
Co. Down, N. Ireland.  
BT20 4RW  
Tel: 0247 465953

### CAMERON SINCLAIR

21, Lauds Road, Crick,  
Northampton, NN6 7TJ  
Tel: 0788 822672  
Fax: 823453

Provisional

### PETER BELLCHAMBERS, STEVEN McFARLANE, HAWTREE & SON

5 Oxford Street,  
Woodstock, Oxon. OX7 1TQ  
Tel: 0993 811976

### ALISTAIR RAE

26 Tannoch Road,  
Uplawmoor, Glasgow,  
G78 4AD  
Tel: 050 585 371

### STEFEN QUENOUILLE c/o TOM MCAULEY

38 Moira Drive, Bangor, Co.  
Down, N. Ireland BT20 4RW  
Tel: 0247 465953

Overseas full

### JEREMY PERN

13 Lotissement des Chenes,  
Aussonne 31700,  
Blagnac (Toulouse)  
France  
Tel: 61 85 09 02

### EDDIE HACKETT

28 Aillesbury Drive,  
Dublin 4,  
Eire.  
Tel: Dublin 691592

### JOAN DUDOK VAN HEEL

Beukenlaan 4,  
B-1640, St Genesius-Rode,  
Nr. Brussels,  
Belgium.  
Tel: 02-3583387

### PIER MANCINELLI

21 Via Achille Papa  
00195, Rome,  
Italy.  
Tel: 06-36036-35

### JAN SEDERHOLM

S 252 34 Helsingborg  
K. Krisoffersweg 3A Sweden.  
Tel: 042-371-84

Overseas provisional

### KURT ROBKNECHE

Dennenmoos 5a,  
8990 Lindau-Bad,  
Schachen, Germany.  
Tel: 08382-230-05

### R. BERTHET

Chateau du Tremblay  
S/Mauldre 78490 Montfort  
L'Amaury France  
Tel: (1) 34879200

### TJASA GREGORIC

Kobilarna Lipica, 66 210  
Sezattia  
Yugoslavia

### GERARD JOL

Landschapsarchitekt bnt,  
Middenduinerweg 75,  
2082 LC Santpoort  
The Netherlands  
Tel: 023 376449

## COMPOSTS

### RUFFORD TOP DRESS SUPPLIES LTD

Nucks Wood Quarry, Wiggins  
Lane, Rufford. Nr Southport.  
L40 1UJ  
Tel: 0704 821900  
Fax: 0704 822583

## FERTILISER & TOP DRESSINGS

### E. T. BREAKWELL LTD

814 Stratford Road, Shirley,  
Solihull, West Midlands.  
B90 4BJ  
Tel: 021 733 3344  
Fax: 021 733 1631

## GOLF COURSE ACCESSORIES



H. PATTISSON & CO. LTD.  
342 Selbourne Road, Luton, Beds.  
LU4 8NU Tel: 0582 - 597262  
Fax: 0582 - 505241

### TACIT

48 Hillmorton Road,  
Rugby. CV22 5AD  
Tel: 0788 68818  
*The very best for less in golf  
course equipment*

## GOLF COURSE CONTRACTORS

### BRIAN D. PIERSON (CONTRACTORS LTD)

Homestead Farm, Ringwood  
Road, Three Legged Cross,  
Wimbourne, Dorset. BH12 6QY  
Tel: 0202 822372/824906

### LAND UNIT CONSTRUCTION LTD

Folly Farm, Hanslope, Milton  
Keynes, Bucks. MK19 7BX  
Tel: 0908510414

### C. J. COLLINS CONTRACTORS

25 Coopers Close, Burgess  
Hill, West Sussex. RH15 8AN  
Tel: 0444 242993  
Mobile: 0860 205233

### LANDSCAPE MAINTENANCE LTD

167 Station Road,  
West Moors, Dorset.  
Tel: 0202 872549

### GOLF LANDSCAPES LTD

Ashwells Road, Bentley,  
Brentwood, Essex.  
CM15 9SR  
Tel: 0277 373720

### SPORTWORKS LTD

Warehouse Road,  
Montrose, DD10 9ES  
Tel: 0674 73900

# BUYERS GUIDE - BUYERS GUIDE - BUYERS GUIDE

## GOLF CART PATHS

### BRENNAN BUILDING & CIVIL ENGINEERS

We are specialists in the construction of golf carts on both new and existing courses, call R. J. Brennan Bsc (Hons), C. Eng., M.I.C.E., Brennan Building & Civil Engineering, Northampton (0604) 769192

## GOLF COURSE SIGNS

### WOODBlast SIGNS

Quality tee markers and golf course signage in carved cedar-wood or Westmorland green slate. COLOUR BROCHURE AND DETAILS FROM:

Woodblast Signs, Lower Standen Hey  
Whalley Road  
Clitheroe Tel: 0200 22156  
Lancs. BB7 1PP Fax: 0200 28576

## GRASS CUTTING EQUIPMENT

### E. T. BREAKWELL LTD

814 Stratford Road, Shirley,  
Solihull, West Midlands.  
B90 4BJ  
Tel: 021 733 3344  
Fax: 021 733 1631

### RANSOMES, SIMS & JEFFERIES PLC

Ransomes Way, Ipswich,  
Suffolk. IP3 9QG  
Tel: 0473 270000 Fax: 0473  
270032 Telex: 98174  
Cables: Ransomes, Ipswich.

### VOTEX HEREFORD LTD

Friar Street, Hereford.  
Tel: Hereford 0432 274361  
Telex: 35302  
W. Naylor or contact your  
dealer.

## GRASS SEED

### BRITISH SEED HOUSES LTD

Bewsey Ind. Est. Pitt Street, Warrington,  
Cheshire. Tel: 0925 54411  
Contact: Roger Saunders.  
Portview Road, Avonmouth, Bristol.  
BS11 9JH Tel: 0272 823691  
Contact: Michael Warne  
Camp Road, Swindon, Lincoln.  
Tel: 0522 86714 Contact: Philip Adams,  
Eastfield Ind. Est., Penicuik, Midlothian.  
Tel: 0968 78480 Contact: Michael Shannon



**Inter Seeds**  
Growing for Success.

Inter Seeds Limited  
Southern Avenue Industrial Estate Leominster  
Herefordshire HR6 0QF Tel. (0568) 6363

### MOMMERSTEEG INTERNATIONAL

Station Road, Finedon,  
Wellingborough, Northants.  
NN9 5NT Tel: 0933 680891  
Telex: 311234  
Contact: Michael Perkins

## GOLF COURSE DEVELOPMENTS

### LUDLOW GOLF DEVELOPMENT

DESIGN, SPECIFICATIONS  
AND CONSTRUCTION  
The Croft, Shottlegate,  
Derby DE5 2LE  
Tel: 077389 454

## IRRIGATION

### CAMERON IRRIGATION (A DIVISION OF WRIGHT RAIN LTD)

Hardwood Ind. Est.,  
Littlehampton, West Sussex.  
BN17 7BA  
Tel: (0903) 713985

### FLANDERBLADE LTD

20 Whiteacre, Littlehampton,  
West Sussex.  
BN17 7JA  
Tel: (0903) 724545

### IRRIGATION AND SLURRY SERVICES

Unit 6, The Bourne Centre,  
Southampton Road, Salisbury,  
Wilts. Tel: 0722 412510  
S.W. office 0271 830800  
Full member BTIA. Southern  
area Toro distributor

### PRIME WATERMEN LTD

Wangford, Beccles,  
Suffolk.  
NR34 8AX  
Tel: 050278 481

### SPORTS TURF SERVICES

Newbridge Ind. Est.,  
Newbridge, Midlothian,  
EH28 8LE  
Tel: 031333 2345

### TORO IRRIGATION LTD

Unit 7, Millstream Trading  
Estate, Christchurch Road,  
Ringwood, Hampshire. BH24  
3SD Tel: (0425) 476261  
also Toro International Sales  
Co - address as above

### BELL TURF AND IRRIGATION SERVICES

Milners Holt, Everton,  
Doncaster. DN10 5DR  
Tel: 0777 817410

TORO AGENTS for the E.Midlands  
FULL MEMBERS OF THE BTIA

### TURF IRRIGATION SERVICES LTD

Betchton, Sandbach,  
Cheshire. CW11 OTS  
Tel: (04775) 255/6

IRRIGATION IS OUR BUSINESS  
WE MANUFACTURE, DESIGN, INSTALL  
SYSTEMS FOR SPORTS, LANDSCAPE,  
AMENITY AREAS  
ADVISE AND QUOTATIONS FREE OF  
CHARGE

### BRITISH OVERHEAD IRRIGATION LIMITED

The Green, Upper Halliford, Shepperton,  
Middlesex. TW17 8RY Tel: 0932 788301/4  
IRRIGATION SPECIALISTS SINCE 1923

## Watermation

GOLF COURSE  
IRRIGATION  
Monument Way East, Woking,  
Surrey. GU21 5LY  
Woking 70303/21009

### PHILIP YORK AND PARTNERS

P.O. Box 749,  
Ringwood, Hants.  
BH24 1YW  
Tel: 0425 472900  
Fax: 0425 471213

## LIQUID ORGANIC FERTILISER

### FARMURA ENVIRONMENTAL PRODUCTS LTD

Stone Hill, Egerton,  
Nr. Ashford, Kent.  
Tel: 023376 241

## LOAM

### C. H. BINDER LTD

Embleys Farm, Moreton,  
Ongar, Essex.  
CM5 OHY  
Tel: Moreton 246-320

## NAMEPLATES & PLAQUES

THOS. A. INGRAM & CO. LTD.  
P O Box 305, 68 Soho Hill,  
Birmingham B19 1BB Tel: 021  
554 4576.

Full colour brochure available  
(Commemorative Plaques,  
Seat Plates, etc)

## PEAT

### BORD NA MONA

36 King Street, Bristol.  
BS1 4DP  
Tel: 0272 211666

## PEAT IN BULK

### BORD NA MONA

36 King Street, Bristol.  
BS1 4DP  
Tel: 0272 211666

## PEST CONTROL

### A & R FAIRWAY PEST CONTROL

Trawstmawr, Llanegryn,  
Tgwyn, Gwynedd. LL36 9LN  
Andrew Venables  
0654 710128 (24hrs)

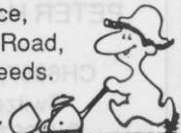
## QUALITY TURF

### TILLER TURF CO LTD

Park House, Worlaby,  
Brigg, S. Humberside.  
DN20 ONF  
Contact: Tim Fell 065 261 451

## RECONDITIONED GRASS CUTTING EQUIPMENT

### GREENSWARD ENGINEERING CO.

Harold Terrace,  
Off Cardigan Road,  
Headingley, Leeds.  
LS6 1PG  
0532 751627 

## SAND

### BUCKLAND SAND & SILICA CO. LTD.

Reigate Heath,  
Reigate, Surrey.  
Tel: 07372 40151

### WETTERN BROTHERS LIMITED

RMC House, Canning Street,  
Maidstone, Kent. ME14 2RX  
Tel: 0622 762361  
Contact: Chris Perkins