

NEW

Rolawn
ADVANTAGE



THE ULTIMATE
GREENS TURF

After 18 years of development
you'd expect our new greens turf to
have one or two advantages.

For 18 years, scientists at Queen's University, Belfast worked to solve the perennial problem of annual meadow grass. The result is a unique seed mixture of Chewings fescue and browntop bent for our exclusive new greens turf, Rolawn Advantage. It's a significant breakthrough and represents another important milestone for Rolawn, Europe's finest turf grower.

So what are the advantages?

- First, no annual meadow grass means the smoothest textured, "greenest" green for your members (and your committee).
- And Rolawn Advantage is actually **guaranteed** supplied free of annual meadow grass.
- There's also the option to have Rolawn Advantage closer mown to bring the green into play even earlier.
- There's fast delivery nationwide (within 12 hours of harvesting) from Rolawn's own network of Turf Depots.
- And of most importance, there's peace of mind -

through Rolawn's fastidious reputation for quality. Quality achieved through meticulous checking of every part of every field. (Ask any top greenkeeper and he'll tell you as much).

If other turf growers promise similar advantages, just check their credentials.

You can check ours by filling in the coupon and sending (FREEPOST) for the Rolawn Advantage Information booklet. Even better, you could book an inspection visit to see the turf for yourself. We'd be delighted to welcome you.

To: Rolawn Ltd., FREEPOST, Head Office, Elvington, York. YO4 5DH

Please send me without delay my copy of Rolawn Advantage - The Ultimate Greens Turf I/we should like to inspect the growing turf Please send details of your other turf and how I can obtain it

Name: _____

Club/Business: _____

Address: _____

Tel No: _____

Rolawn®
ADVANTAGE

Rolawn® EUROPE'S FINEST TURF

ROLAWN LTD., ELVINGTON, YORK, ENGLAND. YO4 5AR TEL: (0904-85) 661

Iron and sand keeps fusarium under control at Tudor Park

John Lelean meets the helmsman, on course for a successful season.

On the outskirts of Maidstone near the village of Bearsted, the new Tudor Park Hotel Golf and Country Club fits majestically into the rural Kentish countryside.

Built on the site of the Tudor House Restaurant, gutted by fire some years ago, together with the adjacent former deer park of Milgate Estate, Country Club Hotels, a division of the Whitbread Group, have created the first of a new generation of hotel golf and country clubs, which they justly regard as the flagship of the present ten similar hotels and golf courses operated by the company.

But more about the superb hotel and leisure facilities later. The objective of my visit was to meet the man responsible for the upkeep of the eighteen hole Tudor Park Golf Course, course manager Derek Keen.

Derek is well known to many greenkeepers in the Midlands, having moved to Tudor Park from Telford Golf and Country Club to take charge at the construction stage in 1985.

Prior to his appointment at Telford in 1974 he had a four year stint as head greenkeeper at Shrewsbury where a new course was built to replace the original 1891 design.

He has always taken an active part in the affairs of the Greenkeepers Association and was one time secretary of the Midlands Section, always to be relied on to produce newsworthy items for publication.

His interest in the advancement of greenkeepers is still strong, though Derek now confesses to taking a less demanding role in the organisation, understandably because of the responsibilities he has undertaken with his new course, though he has accepted a committee position for the Kent Section.

The parkland course, designed by Donald Steel was never intended to be a champion-

ship course. Acreage restrictions demanded the 6,041 yards from the back tees had to be set into the land available, but nevertheless Steel achieved his objective to produce a pleasant hotel club course which gives every golfer, regardless of handicap a more than fair chance to beat the standard scratch.

The course winding round the rear of the hotel has two par fives, 12 par fours and four par threes. Two ponds at the fourth and tenth add a feature to the course, but unless one over clubs at the 177 yard tenth, they do not come into play.

There are only 26 bunkers on the course, one way to cut back on maintenance costs, but these are made up by an increasing use of moundings and grass hollows, formed in such a way they can be cut mechanically. The greens in January were in superb condition. Firm with a good grass covering, well drained and hardly a suspicion of poa.

Derek said they were constructed with a herringbone drainage system overlaid with a blinding layer of pea gravel on a gravel carpet. The growing medium is a 70:30 mix of Leighton Buzzard Sand and Fen Soil.

All the greens were seeded rather than turfed with a mixture of Chewings Fescue and Browntop Bent and since the course was opened for play in May last year he estimates there has been less than 2 per cent incursion from other species.

This has been achieved by a programme of intensive cultivation, slitting every two weeks (though this was not too noticeable on the putting surface) and hand cutting with Ransomes Auto Certes. He is cutting every two weeks throughout the winter.

Over the last few months careful use of iron and sand as a greens top dressing has kept the dreaded fusarium at bay and he has had no need to apply any fungicides. Earlier he fertilised with small quantities Farmura and Seamac but now only applies a dilute solution

on weak areas of the fairways.

The fairways, like most courses constructed on open parkland are inclined to be sparse in the initial stages. Derek is attempting to overcome the problem by regular slitting and keeping traffic away from areas with a tendency to wear thin or become muddy, though drainage is not a serious difficulty as the underlying layer is Kentish ragstone a material which has fissures and cracks allowing water to run through.

With hindsight, the tees could have been built larger and some may have to be extended to give greenstaff the opportunity to effect repairs if the number of rounds of golf increase. Winter golf is played off mats and Derek invested around £1,600 to put an artificial surface on every tee, but even these have not saved the immediate surrounds from intensive wear.

The opening of the course at Tudor Park created an interesting situation, which new golf course owners might consider. Although guests at the hotel may use the course as part of the daily tariff, a club was formed to include membership of both the golf course and the leisure facilities, including the indoor swimming pool.

Because it was a new course, the majority of applications came from nearby residents, who previously had not been able to obtain membership of a golf club with the result that quite a number were beginners at the game.

The thought of three hundred 'hackers' let loose on a new course is enough to turn a greenkeeper's legs to jelly, but this was overcome by insisting that golfers had to reach a required standard before they were allowed out on the fairways.

Although this was an added bonus for club professional Marc Boggia, Derek Keen has said the policy has worked well and not only are the new members reasonably

MANAGEMENT



competent, despite high handicaps, but they have been taught the etiquette of the game. Divots are replaced, pitchmarks repaired, there are less hold-ups and cards are marked correctly.

When the course was planned, trees played a major part in the layout, that was until the hurricane of 1987 struck the South of England. Between 50 and 60 were lost, including ten mature specimens intended to be a feature in the playing of a hole. However these were cleared and in time others will take their place.

Even now visitors to Kent and Surrey are shocked at the total devastation of woodland in the countryside, which will take years to cut and clear, let alone replant.

Derek's pride and joy at Tudor Park is his greenkeeping 'shed'. Shed is hardly the word to describe the magnificent long low L shaped equipment area, hard surfaced in front of the high security up and over doors, with a roofed open area to the left of the building where he is able to store sand and compost and do his own mixing.

The maintenance building includes Derek's office, which also houses the computerized control centre for the Watermation irrigation system and a rest area for the seven greenkeeping staff.

Most of the equipment is Ransomes. In addition to the five Auto Certes for the greens, there are three hand operated Marquis for tees and approaches, three Ransomes 180s, one five blade and two seven blade.

For the fairways he has a Hydraulic 5, with a five gang Magna and a three gang Magna for rough cutting. Power is provided with a 45hp Kubota, a Massey Ferguson 135 and a Ford Tractor with a loader.

For fairway slitting he uses a SISIS TDF 32 and for greens maintenance a Cushman system. Extra equipment includes a screen and shredder and a couple of 36" Bobcats for awkward rough areas.

But to return to the hotel and leisure complex. Derek Keen met me in the poolside grill and bar alongside one of the best private heated indoor swimming pools in the country. The pity was we did not

have the time to enjoy it!

Nor the saunas, jacuzzi, squash courts and snooker tables, though I can sing the praises of the hotel's Garden Restaurant where the food was of excellent quality, beautifully presented by the staff, who perfectly blended the balance between professionalism and friendliness.

As for breakfast . . . that was a treat that had most of the guests gasping for breath as they were confronted with the vast range of tempting dishes from oriental fruits, several types of fish to good old English bacon and eggs accompanied by as many of the extras one could put on the plate.

All the bedrooms have their own bathrooms, most look out over the golf course.

In time the views will be even better as Derek Keen's responsibility includes the hotel gardens. He said the company policy is to create colour and interest throughout the year by planting banks of flowering shrubs.

In his words it is "to create a visual experience", a task I know he will enjoy.



TORO[®]

The Professional's Choice

Wherever top sporting events are held, Toro automatic irrigation is invariably used as part of the all important turf management programme. We would say that of course - but don't just take our word for it, read what the leading professionals have to say on the subject...



"Toro single head control allows me total freedom to work on the golf course as and when I decide. Top dressing, fertilisers, silting and watering - the Toro 650 automatic watering system helps at every stage of my daily maintenance programme - I don't bother watching weather forecasts any more!"

Bob Moreton - Head Greenkeeper
The Berkshire Golf Club



"All the remedial work we carry out at Wimbledon is totally reliant on the automatic watering system. The Toro 650 system gives me complete control of my own environment - especially when I need to cut just nine days after seeding!"

Jim Thorne - Head Groundsman
All England Lawn Tennis & Croquet Club



"It's marvellous, the Toro system - a mixture of 650 and 690 sprinklers really is an invaluable aid to our day-to-day maintenance programme. Installed sixteen years ago, I cannot remember experiencing any serious problems with the watering system. . . Maintenance? We do most of it ourselves!"

Gordon Hiscock - Head Groundsman
Ascot Racecourse



"Water when I need it is essential to help maintain the Wembley pitch which requires constant overseeding. The Toro 690 automatic system is an important preparation tool which allows my staff to work on the pitch between watering - imagine it, it used to take 8 hours to put water on using mechanical sprinklers!"

Steve Tingley - Head Groundsman
Wembley Stadium Limited



"The best bowling surfaces are undoubtedly those which are firm, consistent in terms of speed - and as level as one can possibly make them. Ideally, a mixture of 20% soil to 80% sand helps promote excellent quality turf - this plus an automatic watering system such as the Toro 650 design really puts the groundsman in control. . ."

David Bryant - World Singles Champion
Willie Wood - World Singles Finalist

The bottom line: It costs no more to enjoy the same high level of automated excellence which the top professionals rely on! Hundreds of Toro users will vouch for that - but prove it yourself, ask Toro to bring you and your club up to date with the facts. Telephone or write today.



TORO[®]

Excellence in Irrigation

TORO IRRIGATION LIMITED
Unit 7, Millstream Trading Estate
Ringwood, Hampshire BH24 3SD
Telephone 0425-476261



HOW DOES THE LATEST TECHNOLOGY IMPROVE YOUR TURFCARE PROGRAMMES?

KUBOTA KNOW HOW!

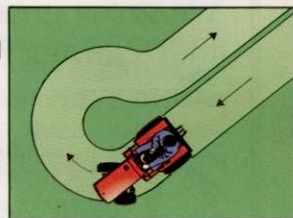


Kubota know how to ensure the right machines for the task in hand, providing the power and the versatility for all your grassland and turfcare needs.

And the proof is evident on the next generation B50 series — the 14hp B1550, the 17hp B1750 and the powerful 4 cylinder, 20hp B2150 compact tractors.

It was Kubota know-how that first introduced compact tractors with hydrostatic transmission which leaves the operator's hands free for steering and implement operation, whilst providing infinitely variable speeds and instant changes of direction forwards and backwards. HST is available throughout the B50 series range.

Now, Kubota know-how has developed the exclusive Bi-Speed Turn innovation for the B1550 and B1750 models: on tight turns, the front wheels rotate almost twice as fast as the rear wheels, allowing the tightest of turns with significantly reduced turf damage. Each has a mid-mounted mower, with which you can make a single turn round a tree!



With 'turf' pattern tyres and a cylinder block of tunnel construction to ensure that no oil is shed on precious turf, the Kubota know-how of the B50 series gives you more choice of more power for all your grassland needs.



If you want to know how to care for your turf, just complete the coupon. Because Kubota have the know-how!

KUBOTA
MORE POWER. MORE CHOICE.

Kubota (UK) Limited, Dormer Road, Thame, Oxon OX9 3UN. Tel: 084 421 4500



THE NEXT GENERATION:
INNOVATION FOR IMPROVED TURFCARE.

I want to know how the latest technology can improve my turfcare. Please tell me how.

Name: _____
Address: _____
Postcode: _____
Tel: _____

Grass growth on small tees

The Setting: The small but scenic 16th tee at Secluded Woods Golf Club. Dappled light flickers on the teeing ground through the tall oaks. After several practice swings and a few divots, the golfers prepare to play. **The Comment:** "Why can't we grow grass on this tee!" James Snow gives some answers.

Only a lucky few golf course managers have never had to answer this question. Most

speak of their problem tees with a hint of frustration and forced resignation, feeling that the ultimate solution to improving them would not be acceptable to the golfers. While this may be true in certain instances, it is often possible to make adjustments to the tee itself or to the surrounding environment so that acceptable turf can be maintained.

Problem tees usually suffer from one or more of the following maladies:

- small size
- tree effects
- poor construction
- insufficient maintenance and management

Most often a combination and interaction of three or four of these factors leads to turf failure, but it is probably safe to say most problem tees have one thing in common: they are simply too small to accommodate the play they must take. To a certain point, adequate tee size can compensate for almost any other weakness. The ability to distribute wear over a large enough area is the key.

A good rule suggests that there should be at least 100 square feet of usable teeing area for every 1,000

rounds of golf played annually, with 200 square feet available for every 1,000 rounds played from tees where irons are used. If this was the situation at most golf courses, there would most certainly be fewer problem tees.

Many tees were not small to begin with, but rather, they evolved over

*Old tees
can't handle
the same traffic
as modern tees*

the years. Consider the great architects of the 1920s building golf courses to accommodate perhaps 5,000 to 10,000 rounds. Had they only known that today their courses are being stampeded by up to 40,000 to 50,000 golfers each year. Construction specifications, too, were not what they are today. Old tees built of native soils can't handle the same amount of traffic as a tee constructed to modern specifications.

Finally, the growing environment around many tees has changed over



A small tee before and after trees were removed.

MANAGEMENT

the years. The negative effects of maturing trees and the demands for more closely cut turf have pushed tees beyond their limits without intensifying maintenance practices. When this occurs, most golf clubs would be best advised to rebuild or enlarge their tees to better accommodate the traffic they receive.

A major complicating factor contributing to problem tees is the effect of nearby trees. While most golfers consider the shade and aesthetic beauty of these trees, from a turf standpoint they are a nuisance. Shaded turf is inevitably weaker, less vigorous, more prone to traffic injury, and less able to recover quickly from damage. Too many trees block air circulation, leading to problems with heat and disease.

Wherever possible, nearby trees should be selectively culled, and branches on remaining trees should be pruned and thinned to increase sunlight and increase air circulation. If it is done carefully, the turf can be significantly improved without harming the aesthetic appeal of the area.

While it is easy enough to see how shade affects turf, tree roots are the hidden menace. Contrary to popular opinion, tree roots can extend well beyond the dripline in their search for moisture and nutrients, robbing the turf of essential elements. In most instances, root pruning around the outside of the tee can make a dramatic difference in the condition of the turf on the tee. Tree root pruning is easily done by slicing or digging a two- to three-inch-deep trench between the tee and trees. If a trench is used, place tar paper or sheets of heavy plastic along the wall of the trench and backfill. Root pruning may have to be repeated every three to five years, depending on the species and their proximity to the tee.

Trees also affect tees by effectively making them smaller. As trees planted off the front and sides of tees become larger, they block part of the tee. As a result, the actual usable teeing area is reduced, and the remaining surface is subjected to greater and greater play. Where this has occurred, trees should be removed or branches should be pruned back to help reclaim the entire surface.

Many problem tees were unknowingly built to self-destruct. While it is common for new greens to be built to the latest improved specifications, such is not the case with many new tees. The use of pond dredgings or on-site topsoil, the lack of adequate drainage, and poor grading are among the common mistakes.

Where substantial quantities of fill are used, the material is not always compacted or allowed to settle adequately before the topmix is added and the finishing work is done. As a result, settling occurs later and the tee becomes uneven. When this happens, the usable area on the tee is reduced, and the remaining level areas are subjected to heavier play than anticipated.

New tee construction should receive the same kind of consideration as if it were for a green, especially where heavy play is anticipated.

Where time and resources are available, intensifying maintenance practices can partially overcome the effects of small size, poor construction, and tree competition on problem tees.

Any practice that improves the



MANAGEMENT

health and vigor of the turf is certainly helpful on problem tees. One of the easiest and yet most overlooked programmes is turf fertilisation. Tees frequently require twice as much nitrogen fertiliser as greens, yet they often receive less than greens. Because of heavy wear and their need to recover quickly from damage, use of 3/4 to one pound of nitrogen per 1,000 square feet per growing month is common.

To help overcome the effects of heavy traffic and soil compaction, aerify (core cultivate) problem tees as often as possible. If the soil is poor, remove the cores and incorporate good quality topdressing into the holes, then overseed the tee with the appropriate type of grass, which in the case of problem tees is often perennial ryegrass. Ryegrass germinates and develops quickly, is wear tolerant, and it survives on shaded, compacted tees better than bentgrass.

One of the best techniques for encouraging quick recovery of damaged areas is to fill divot scars daily, weekly, or as often as possible

with a mixture of top-dressing and seed. This helps to keep the tee surface smoothed and helps minimise the establishment of certain weeds.

Because mowing problem tees with triplex mowers can contribute to soil compaction and turfgrass wear problems, try to use walk-behind units. If this can't be done, then request that the triplex mower make its turns off the teeing surface itself.

In the realm of tee management, many things can be done to maximise usable teeing area and to take advantage of every available square foot of space. Depressions should be selectively topdressed on a regular basis until they conform with adjacent turf. Severe undulations or settling over irrigation lines may require that the sod be lifted, the subsurface levelled and the sod replaced.

Trees which interfere with play or block the use of part of a tee should be removed or pruned back so that golfers can legitimately use the entire surface.

Where the situation presents

itself, build ladies tees (or forward tees) to take a certain amount of traffic off the regular tee and to open up a new area for the regular markers where the forward markers had previously been placed. The construction of alternate tees at a different distance or angle would serve a similar purpose.

Careful movement of tee markers from day to day can also be very helpful in distributing traffic over the entire usable area. Using just 1/3 or 1/2 the width of the tee when possible, move the markers in a set rotation so the golfers are forced to use the entire tee over a period.

Dealing successfully with problem tees involves intensifying maintenance and management practices and minimising the effects of nearby trees. When this does not resolve the problem satisfactorily, enlarging or rebuilding the tee to good specifications is the only alternative.

James T. Snow is Director of the North Eastern Region of the USGA Green Section.

GREENSWARD ENGINEERING CO.

SUPPLIERS OF HIGH QUALITY RECONDITIONED AND GUARANTEED TURF MACHINERY

FORD 1200 4wd tractor 339hrs	£2,450.
BROUWER Power gangs	£1,495
LLOYDS 3 Leda gang mowers	£1,850
RANSOMES Motor Triple	£2,950
RANSOMES Auto-Certes. New engine from	£595
RANSOMES 3 sportscutler trailed gang mowers	£1,850
RANSOMES 3 Magna trailed gang mowers	£1,850
RANSOMES 3 Hydraulic gang mowers	£2,200
RANSOMES 180 706 hrs. c/w lift kit	£2,795
KUBOTA L225 c/w cab & turf tyres	£2,450
KUBOTA B7100 4 wd 178 hrs - immaculate	£3,450
CUSHMAN c/w top dresser, slitter, brush etc	£4,450
BUCHER flail mower for steep banks	£1,495

Ring NOW for full machinery list. National delivery arranged.



LEEDS (0532) 751627

Harold Terrace, Headingley, Leeds LS6 1PG

F. HIRD & SONS

Nationwide suppliers of railway sleeper and crossing timbers. Wooden and Concrete, all grades suitable for retaining walls, roads, path edgings etc. Prices available for delivery or collection from all areas.

For further information phone

BARBARA

Doncaster (0302) 831339



THE BRITISH MASTERS.

Lindum are Masters of growing fine turf for golf greens and tees.

"I am absolutely delighted with the quality of the Lindum turf supplied for the greens of our new south course." Michael Hunter, Estate Manager, Wentworth Golf Club.

Need we say more? If so, ask for a copy of our new brochure.

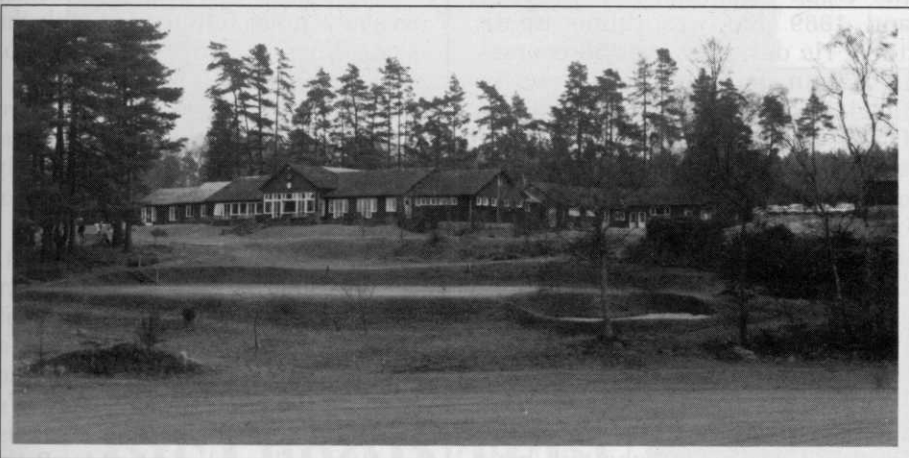
LINDUM Seeded Turf
FOR LANDSCAPE AND LEISURE

For more information, telephone Stephen Fell, 065 261 329, Lindum Seeded Turf, Church House, Horkstow, Barton on Humber, South Humberside DN18 6BG.

THE MASTERS OF FINE TURF PRODUCTION

Exercises in golf course architecture

Fred Hawtree has praise for home grown talent



Liphook Golf Course designed by Horace Hutchinson.

Last month, I threatened to clobber you with a key to the style of golf course architects to help you establish responsibilities for your own course if the early Minutes are obscure. Even if they are absent, as is more common, there may still be one of those slim booklets which publicity firms produced gratis for nearly all golf clubs on the revenue from butcher, baker and other suppliers who felt it prudent to keep their names in favour with the secretary.

Given the connections, it is probably no accident that the Irish are equally addicted to discovering the identity and activities of their courses' designers. Reading a recent press cutting about a west coast, links, I was fascinated by a description of the architect's aims, style and mannerisms which could only arise from wide experience and reflection on the results. The account of these characteristics became still more riveting when it mentioned that they were mine.

These publications from firms like Temple Publicity Services, and The Golf Clubs Association (G.W. May Ltd.) generally started with a potted history and sometimes the name of the designer got in by mistake. The latter firm, particularly, used highly respected writers and these were more likely to look for the architect first. But apart from a few cognoscenti, British golfers have never been particularly interested in the man who designed their course. Even today he will only be

identified if his name is Nicklaus, Ballesteros or Langer. You don't believe it? Last week one of those travel writers who spend happy lives perambulating Europe sending home occasional dispatches on hotels where they lingered and four-course meals which, after a loving description, they generally sum up with a casual cost-guide like 'only £80 a head.' This man had been down the Costa Brava to Pals where he found the 'renowned' golf course which was host to the Spanish Open in 1973 (British designed, not mentioned). Farther south, he visited another golf course 'designed by Olazabal.' I guess that this would be Mr O's first and, since his father was a golf greenkeeper, it is likely to be very creditable. I also guess that he gets a mention because the player is known. In this country, if the golfing press ever mention a British designer's name, they always feel obliged to tack on to it 'the well-known golf course architect' because their readers will not know who on earth they are talking about.

The American golfer is different. He wants to know who designed the course before he pays his green fee or very soon afterwards. Some of his interest may spin off the higher publicity profile adopted by resort courses; but some, at least, comes from a genuine interest in all the aspects of the game he enjoys and a desire to compare the designs of one man with those of another.

Clues in the form of mannerisms in detail and standard solutions to particular problems often provide the best cards in the golf course Identikit which I shall offer later. Much later, as it happens. You should allow at least 28 days for delivery, like everything else you order by post, because it is now clear that the names will mean nothing to you. Therefore the current exercise will be devoted to cataloguing the principal designers of the early days. After that there will be no excuse for you to say that you never heard of him.

We will return first to the happy days when there were no golf course architects - only golf professionals, though sometimes known as greenkeeper or custodian, until job descriptions became better defined.

Amateur golfers did not get in on the act until the early 20th century though men like Horace G. Hutchinson, Gordon G. Smith, John L. Low and Arthur Croome were already formulating theories of design which they were able to apply when consulted informally, Hutchinson at Royal Eastbourne and Royal West Norfolk, John Low at Woking and Croome later at Liphook. But these were mostly one off men, (there are still a few about). You are unlikely to come across them in this context and I should be hard put to it to define any recognisable features of their work.

Most designers or better, perhaps, 'layers out' of golf courses were professional golfers as late as 1910 and even after the Great War though things were changing. I say 'layers out' because a golf course would often be staked out in the afternoon following a morning inspection (though not on a Sunday in Scotland). Indications of bunkering might be discussed or supplied on a plan later but the detailed landscaping of greens and hazards was often the province of the local greenkeeper, professional or contractor.

This was not true of later disciples like Willie Park Junior to whom we will return to in a moment but probably characterised the more distant operations of the prolific

OPINION

Tom Morris (Snr.) 1821-1908. It is only fair to point out however that alterations of contours on any large scale were either impossible, unnecessary or not wanted at that time. The real art lay precisely in the staking process as in many ways, it does today save when the operation is only an exercise in landscape engineering and the original contours are ignored. Old Tom did marvels within these limits.

His contemporary, Tom Dunn, (1849-1902) was the most prolific of five golfing and designing Dunns. His father had laid out the London Scottish Golf Club's course on Wimbledon Common. Tom cannot be mentioned without crediting him for the golf course architect's favourite and most hackneyed quotation 'God obviously intended this to be a golf course.' He was a great cross-bunkerer and his formal style had an enormous influence on inland design until the knowledgeable young amateurs who followed took it apart and interred it. He did more than 50 courses in Britain and others overseas. His brother, Willie Junior, and nephews Seymour Dunn and John Duncan Dunn all started designing in Britain and Europe but then moved to North America where they left an impressive list of credits. Willie Park Junior came much closer to today's practising golf course architect although his talents penetrated every department of the game - golf

ball-maker, greenkeeper, professional, club-maker, golf architect, contractor, developer, inventor and author. To cap this record, he won the Open Championship in 1887 and 1889 and was runner-up in 1888. He designed over 50 courses in Britain, four in France, two in Belgium and a wide range in the U.S.A. and Canada.

Willie Park and the Dunns take us across the turn of the century to the early 1900's when James Braid started designing. Braid won the first of his five Opens in 1901 and his earlier courses like Machynlleth (1905); Stranraer (1906); Turnhouse, Edinburgh (1909) West Hove (1910) were followed by over 100, the majority constructed by John R. Stutt Ltd. of Paisley who will have done the detailed design on site.

J.H. Taylor, fellow member of the Great Triumvirate, was just ahead with Seaford (1904) before Royal Ascot (1905), Eastbourne Downs (1908), Clevedon (1909) and also seems to have got his nose in front at Salisbury and South Wilts (1894). His score exceeds sixty but after 1920, like Braid, the credits are blurred because he allied himself to a practical designer and constructor, my son's grandfather, who I happen to know did the donkey work until Taylor, also like Braid, put in an appearance at the Opening Exhibition matches. But his reports in the early 1900s, before this connection arose, were 'professional' and

wholly admirable. I was naturally convinced of this at Mortonhall, Edinburgh's first 'private' course, when I found, some years later, that my recommendations of 1973 for five new holes followed roughly the same lines as those which Taylor had suggested in 1905.

Vardon (1870-1937), the third side of the triangle though active, did relatively little. His score barely reaches 20 and a few of these are of dubious attribution.

Digressing for a moment, when Royal North Devon G.C. opened its museum at Westward Ho!, they played a recording of J.H. Taylor giving the encomium at Harry Varden's funeral. I thought it of marvellous quality and said so to Mr. Peter McEvoy who was next to me. "Met a lot of people!" said P.M. and that was that. But I think there was much more to it. In spite of leaving school at 11, J.H. acquired a style and presence which no further education could have improved. He did not need to imitate people. His eminence and his prose were notable because they were home-grown.

The last professional designer of note in those early days is Tom Williamson. He was greenkeeper and pro. at Notts. Golf Course for more than 50 years from 1896 to 1950 but was consulted for many new layouts. His extra-mural activities was confined almost exclusively to Nottinghamshire and adjoining counties.

His assistant was his brother, Hugh. In all, Tom was responsible for more than 60 new courses and remodellings and could even claim at one time that every course within 50 miles of Nottingham came from the Williamson stable.

If stuck for an answer to the provenance of an East Midlands course, you could therefore do worse than hazard a guess that the author might be Tom Williamson.

These are all the names you need to know for the moment. I will return to the matter next month when we will look at the amateur golfers who took over in the Twenties. By the time we have looked at all of them, I expect we shall again have to put off giving you the Identikit until a later issue. By then you will probably be too busy to read it anyway but it is nice to think that Spring is now with us.

WORTH DRAINING

2 VERTI-DRAINS FOR HIRE

*

GETS THE JOB DONE IN HALF THE TIME

*

EXPERIENCED OPERATIVES WHOLE COUNTRY COVERED

*

FOR A QUOTATION PHONE 0476 84266
Cornbecks, Irnham, Grantham, Lincs. NG33 4JQ