

WESSEX

LGU Wood Chipper

A versatile and powerful wood chipper which can achieve full capacity even with a 16hp compact tractor.



Brushwood up to 12cm thick can be loaded horizontally and powered rollers feed it to the chipping disc at a controlled rate. Chip size can be varied and the chips are discharged through an adjustable chute directly into a trailer. PTO versions and fully self contained highway models are available.

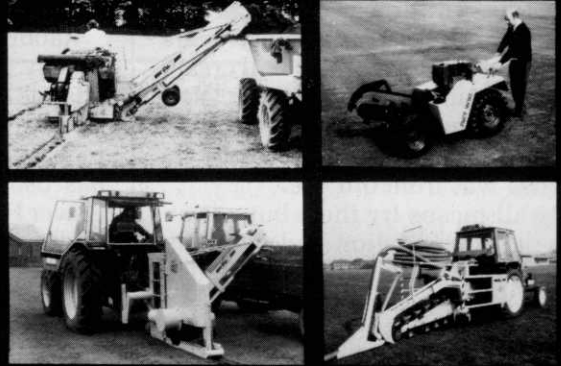
Clip the coupon today for full details

Rush me details of the LGU CHIPPER

Name Position
 Company Address
 Phone

WESSEX FARM
 MACHINERY SALES CO.
 Trading Estate,
 Oakhanger Road,
 Bordon, Hants, GU35 9HH.
 Tel: (04203) 8111

For Multi-Purpose High Speed Trenchers Choose AFT



Our range of seven trenchers cut from 5 cm to 45 cm wide for all your cables, water pipes and sportsfield drainage requirements with unrivalled performance and cost effectiveness. Soil collection systems and laser assisted grading are available on some models. With over 20 years manufacturing experience, a first class after sales service and a convenient self-drive hire fleet we offer a unique trenching service that is second to none.

Write or telephone for details today:-

A. F. Trenchers Ltd.,
Gosbecks Road, Colchester, CO2 9JS
Telephone 0206 44411

RFE - RFE - RFE - RFE - RFE - RFE - RFE -

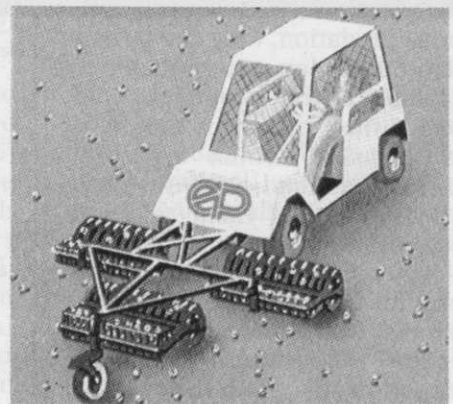
RFE TURF MACHINERY

THE PROFESSIONALS CHOICE

Units 3 & 4, Wedglen Industrial Estate, Midhurst, West Sussex GU29 9RE.
 Tel: 073081 5775/6/7

NEW & USED TRACTORS AND GRASS CUTTING MACHINERY

- | | |
|--|--|
| Allen National 68 (choice of 3) | Toro 70 |
| Ransome 180 (fixed and floating) (choice of 4) | Toro GM300 (new type heads) |
| Ransome hydraulic 5 | Sisis Auto Turfman |
| Ransome hydraulic 214 sportscutters | Sisis Auto Rotorake |
| Ransome mounted 3 Magna (choice of 2) | Mountfield Triple 'M' choice of 2 |
| Ransome Mk 10 gang mower 3 & 5 units | Dabro Fine Turf Slitter |
| Ransome Mk 11 gang mowers 3 & 5 units | Dabro Outfield Slitter c/w weight transfer |
| Ransome 20" Auto Certes | Dabro Scarifier |
| Ransome Motor Triple | Dabro 2 leg Turf Drainer |
| Ransome 5/7 magna gangs | Paterson Fine Turf Scarifier |
| Cushman truckster 3 wheel (choice of 2) | |
| Cushman Top Dresser | TRACTORS |
| Cushman Cyclone | Iseki 3210 4WD |
| Cushman Low Load Box | Ford 1710 4WD (turf) Lewis Loader |
| Cushman 5 mini Gangs | Kubota B7100 HST 4WD |
| Cushman Turf Scarifier | Massey Ferguson 135 2WD |



GOLF BALL COLLECTOR
BY EASY PICKER
RING FOR DETAILS
FROM 9' TO 21'
DESIGNED TO SAVE TIME

Main dealers for Agria - Iseki - Allen - Woods.
 We buy and sell - always willing to take part exchange

RFE - RFE - RFE - RFE - RFE - RFE - RFE -

MANAGEMENT

milk bottles, hosepipe, electric vibrators, children's plastic windmills on sticks, proprietary baits and other old wives tales will create inconvenience but little more. You may find an odd mole who died laughing, but it was more likely its demise was from old age.

By all means try them but not on our recommendation and certainly not if it costs anything. Complete control is only possible with professional help, backed by continuous monitoring by your own staff on a daily basis.

And now to rabbits, but where does one start? They are synonymous with breeding, can scratch, dig, despoil, destroy newly planted trees, turn a bunker into a children's sand pit or create a complimentary hold for putting on the green.

They may well feed and frolic on your hallowed acres, but live in comparative safety on neighbouring land across the way.

Myxomatosis, whatever view you may hold on the disease is no longer having the total extermination effect of twenty years ago. Rabbits are recovering from the infection and in many cases developing an immunity.

Their non feeding periods have changed from the deep burrows in banking to spending daylight hours in shallow depressions and deep undergrowth, though with continuous predation, they can be controlled but seldom exterminated.

Rabbits can be trapped, snared, ferreted, shot, gassed or caught by dogs. If asked which method I would recommend, I would reply "At least three of them, and any three will do!"

Work of this type can obviously be provided on a professional basis. Much can also be done voluntarily by the thousands of keen fieldsportsmen around the country. Many belong to shooting organisations such as the British Association for Shooting and Conservation (B.A.S.C.), carrying full 3rd party insurance.

Gassing holes and warrens is a worthwhile operation and can be done by staff using Phostoxin tablets in systems, which are observed to be active. Professional instruction is advisable to gain the best

effect from this method, the same applies to trapping and snaring.

Rabbits can now be fenced out simply and effectively using 3 or 4 strand electric fencing systems fixed low down at 3, +3½, +4, +4½ inch wire spacings. This method has been pioneered by Gallaghers Power Fencing, UK at Coventry. It is widely used by market gardeners, field scale horticulturalists, and farmers and is often the only practicable method of stopping damage, especially when rabbits are coming from adjoining property.

These fences, and others at different spacings are equally effective in controlling badgers, foxes and deer. They are far less obtrusive than other methods. Further information and advice can be obtained from the manufacturers.

Rabbit control is a long term project. A professionally drawn up plan of campaign combining riddance and exclusion is the first and most important step.

Many creatures cannot fairly be described as pests but will occasionally cause damage or create nuisance. Crows, other corvines and seagulls sometimes develop a taste for golf balls. Unprotected species can be stopped by removing the individual responsible. One normally only gets one shot at a crow, before the difference between a 5 iron and a 12 bore is learned.

The presence of large numbers of Cockchafer grubs in fairways and in the 'rough' will often lead to major excavations by rooks and badgers. The cure on areas frequently damaged lies in spraying the turf to kill the grubs and leather jackets, not in destroying the rooks and badgers - another example of, remove the food and the pest moves on! Likewise create a barrier, like electric fencing between a feeding area and shelter habitat and the pest feeds elsewhere.

Wildlife is something to be encouraged on golf courses. The provision of rough natural areas and ponds for conservation will enhance the appeal of any such Club. Staff trained to recognise and treat developing problems will make such areas both rewarding and valuable.

Professional consultation, service, staff training and co-ordinated help, provide the link between wildlife and habitat conservation and damage prevention.

To return to my opening question, 'What is a pest?' - some things are always pests, and anything can be a pest. Everything has its place, but it doesn't have to be on your place.

Andrew Venables is an expert in pest control systems specialising in assisting golf clubs.

He operates A & R Fairway Pest Control from Tywyn, North Wales offering both consultancy on pest problems, staff training or eradication.

OPEN CHAMPIONSHIP

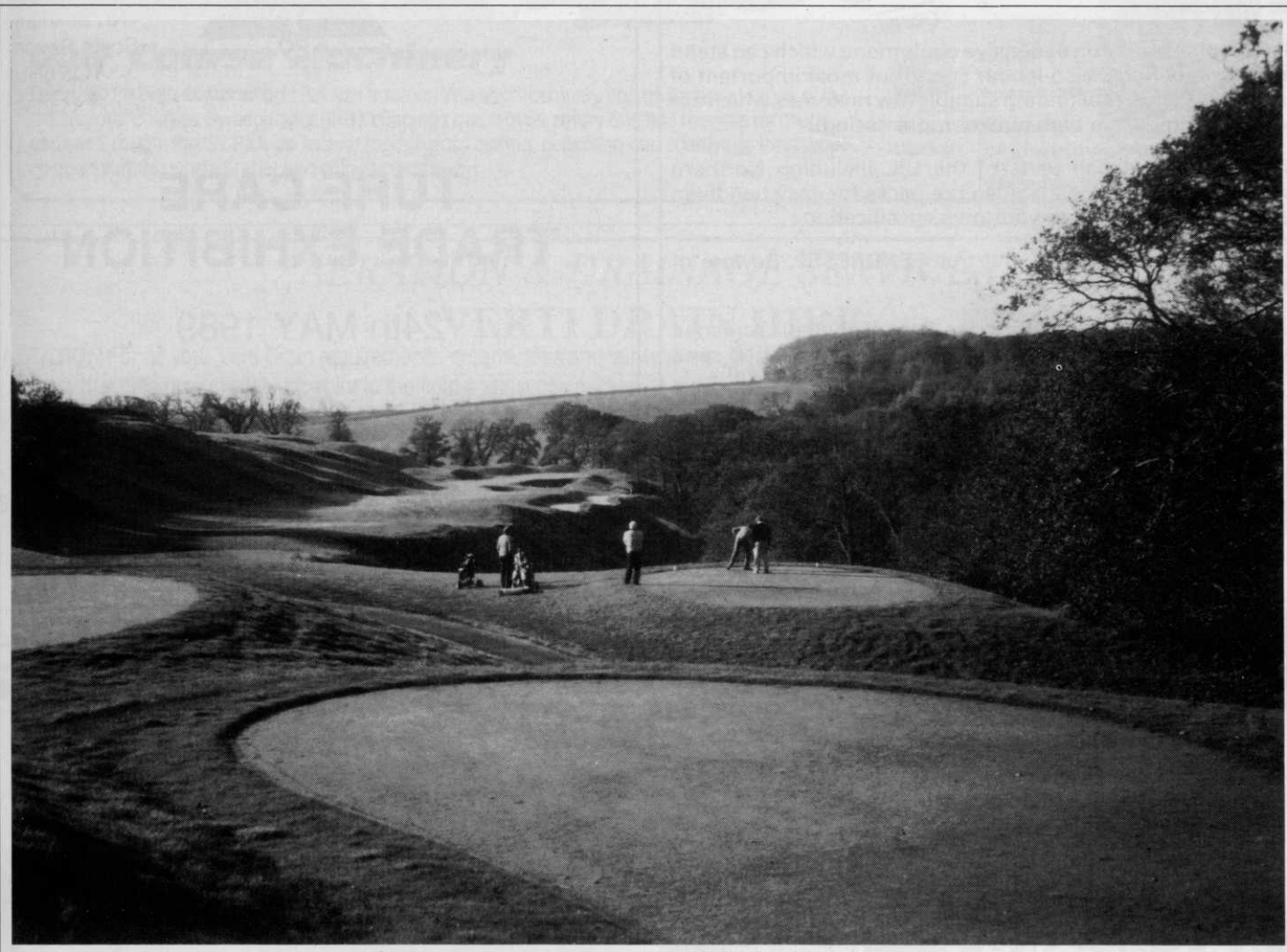
17th-23rd JULY, 1989

If you wish to assist with bunker-raking and other duties at Troon, please forward your name and address to the Executive Director as soon as possible with an indication of the dates on which you are available. Please note that assistance is needed for the practice days as well as the four Championship days.

Preference will be given to those members who can make themselves available for the whole period.

Courses with top pedigrees

John Campbell reports on three new Golf projects using seed imported by BSH



There is a good choice of tee positions at every hole on the Jack Nicklaus International Course.

Having heard and read much about the Nicklaus International Course at St. Mellion, Cornwall, it was interesting to visit the complex recently to tour the layout and facilities by courtesy of Herman Bond, co-owner of the club with his brother, Martin. When I arrived there the place was a seething hive of activity in the morning sunshine, the car park full, a golf school in progress on the practice ground and an enthusiastic group of society golfers preparing to go out on the course. On a pleasant hillside location overlooking the golf scene, earthmoving machinery was busy preparing a site for building luxury homes as part of the complex - it seemed a superb setting.

Commanding views of the surrounding countryside from the

clubhouse and parts of the course are a scenic feature. Although there is a fall of 200 feet from the clubhouse to the lowest point of the course, by dint of extensive earth movement most of the fairways have been constructed on the level. The course layout has been designed to accommodate special routes for golf buggies and other traffic flow, also with big events in mind there are many natural vantage points to present ideal viewing facilities for spectators.

While the course was specially designed to offer a challenging test for professionals and low handicap players it also caters for the ordinary golfer by a choice of tee positions at each hole. The contemporary style of green design gives the course a good degree of character, the

mounds and traps around the putting areas are well balanced to provide contrast, depth perception and blend well with the surroundings. Water is also an attractive feature and good use has been made of lakes and streams to enhance the playing strategy.

British Seed Houses supplied all the grass seed for the course construction. Their A12 fairway mixture - 35 per cent Frida/Checker chewings fescue, 45 per cent Boreal creeping red fescue, 10 per cent Julia smooth stalked meadowgrass, 10 per cent Highland browntop bent, is an ideal blend of species now well established on all the fairways to make a good playing surface. It allows the ball to sit up well and is a boost to the golfers confidence for the next shot to the

FENDRESS®

THE TRULY NATIONAL TURF TOP DRESSING AS SUPPLIED TO MANY CHAMPIONSHIP COURSES FOR OVER 10 YEARS

A superior and consistent golf green top dressing prepared for the professional using the highest quality East Anglian fensoils (with very low clay and silt fractions) which are blended with lime free silica sand, shredded and screened, ready for immediate application.

Save capital outlay on expensive equipment, which can stand idle for long periods, also labour costs, but most important of all, save the difficulty of finding suitable raw materials which are essential to produce a high quality top dressing.

Bulk deliveries to all parts of the UK, including Northern Ireland in 10-25 tonne loads. Also pre-packs for easy handling. Special mixes prepared to your own specification.

Remember, there is only one true FENDRESS®. Beware of imitations.

Also available, granulated Sedge Peat (Fenpeat), screened loam, specialist yellow or white bunker sands, grit/dried sand for vertidrainage.



FENDRESS

Please telephone T J Banks for a competitive quotation

Contact:

FEN TURF DRESSINGS LTD
3 ANGEL COURT
DAIRY YARD
HIGH STREET
MARKET HARBOUROUGH
LEICS LE16 7NL

Tel: (0858) 64346 or 33003

BRITISH AND INTERNATIONAL GOLF GREENKEEPERS ASSOCIATION

South West and South Wales Region

Regional Administrator
Gordon F. Child



Archways
Churston Road
Churston Ferrers
Nr. Brixham
South Devon
TQ5 0HU
Churston 844056

TURF CARE TRADE EXHIBITION

24th MAY 1989

AT

LONG ASHTON
GOLF CLUB

BRISTOL

Don't just mow that grass—SPRING CLEAN it!

Get rid of winter debris and **SPRING CLEAN** your turf in *one pass* with the remarkable McConnell Dabro Turf Groomer.

This beautifully engineered piece of equipment sweeps, cleans, cuts and rolls simultaneously thanks to its combination of brush, rotor blade and roller leaving a professional, 'striped and groomed' finish.

In two models – one for 18-30hp and one for 35-45hp tractors – the McConnell Dabro Turf Groomer:

- **CUTS** – 42 high-speed blades, infinitely adjustable, with a massive 71" wide cut.
- **CLEANS** – tough pto-driven 'broom' combs the grass upright ready for the blades **AND** picks up all debris, flinging it into the collecting box.
- **SCARIFIES** – the brushing motion of our polypropylene 'broom' lifts out growth-inhibiting 'thatch' giving room for fine grasses to flourish.
- **COLLECTS** – old 'thatch', as well as anything else in its path, is chopped, shredded and collected in the 43 cu. ft. capacity hopper.
- **STRIPES** – fully adjustable roller leaves your turf with that enviable light/dark striped effect.

Write or phone now for the name of your nearest dealer.



ENGINEERED FOR PERFORMANCE

McCONNEL DABRO

F. W. McConnell Ltd.,
Temeside Works, Ludlow,
Shropshire SY8 1JL.
Telephone: 0584 3131
Fax: 0584 6463

WESSEX

Compact Tractor Attachments

Golf Course Machinery

Designed for both compact and full size tractors, Wessex machinery can be found on many of the leading golf courses. Sweepers for grass clippings and leaves, rotary and flail mowers for rough and semi-rough, the GR Pick-up mower for one pass cutting, collecting and scarifying, even wood chippers turning waste timber into chips for pathways.



Illustrated: GM 415 finishing mower, pto sweeper collector, P18 rotary mower, LGU wood chipper.



Send now for the new Wessex catalogue.

WESSEX FARM MACHINERY

SALES CO.

Trading Estate, Oakhanger Road, Bordon, Hampshire, GU35 9HH Telephone (04203) 8111



AERATION & DRAINAGE SERVICES VERTI DRAIN HIRE

AERATION For all your Verti Drain requirements, greens, tees and fairways etc., all different tine sizes catered for, also hollow tines. Another superb machine now available for hire in the fight against compaction, is the Twose Turf Conditioner. A very efficient and economical way to aerate large areas such as fairways, etc.

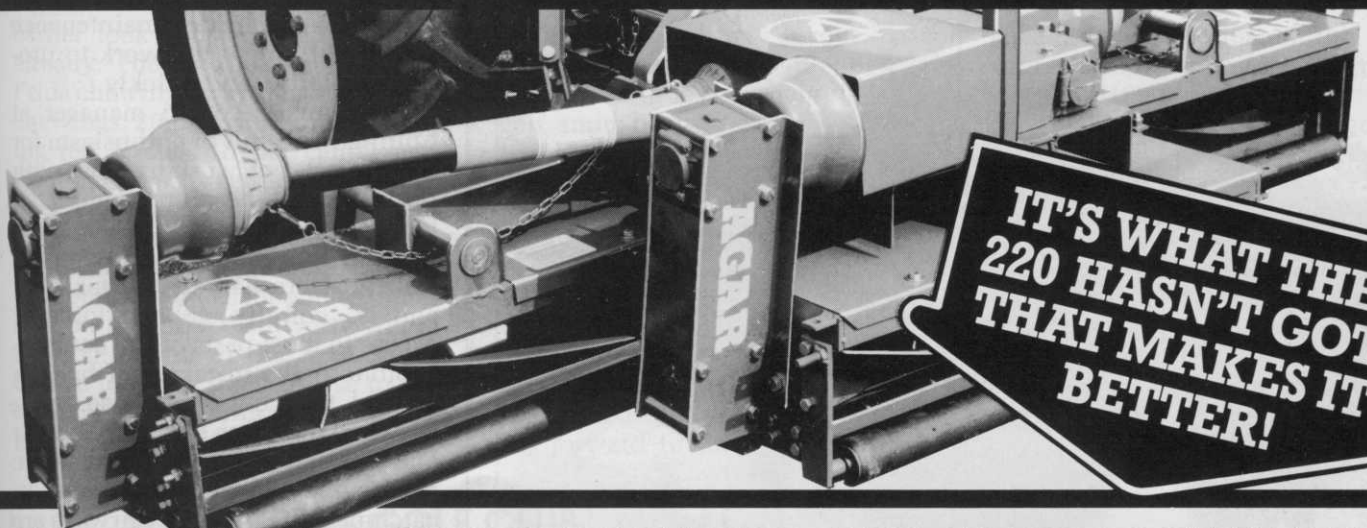
Verti Drain rates '89 equal £275 per day. £1100 per week (5 days)

DRAINAGE Wizz Wheel Trencher and Backfill Hopper, this is to be available from Spring '89 on a weekly rate (minimum hire 3 days). Should you just require trenches excavated, to be backfilled by yourselves, or, quotations can be submitted for complete sand slitting/drainage programmes.

CONSTRUCTION/ALTERATION Should you find the workload too great for your own greenstaff regarding tee/bunker construction etc., we would be pleased to submit a quotation for such projects.

For more information and prices please contact:-

Paul Wright, Aeration and Drainage Services, 20 Westminster Close, Eastbourne, East Sussex, BN22 0LQ Tel: 0323 506725



IT'S WHAT THE 220 HASN'T GOT THAT MAKES IT BETTER!

NO BELTS • NO CHAINS • NO HYDRAULICS

SWEeper / COLLECTOR



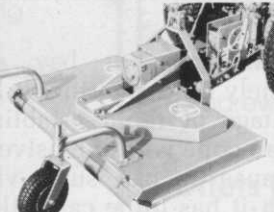
Incredibly efficient. 4, 5 and 6 ft models. 4 brush. (Scarifier attachment available).

MID-MOUNTED MOWER



Rear discharging. 4 and 5 ft widths. Independent hydraulic lift on 5' width.

ROTARY MOWER



3-point linkage. 48" 60" and 72" cut. Cutting heights 1/2" upwards.

Unique 3-Gang Mower for 15 BHP Tractors and Above

No more belt and chain adjustments! Time-consuming maintenance! Costly repairs! The 220 cuts all that out. Gives 84" cut. Cylinder removed in one minute. 3-point linkage. Quick attach/detach. Folding mainframe. (5-gang version now available).

AGAR
SIMPLY BETTER

Agar Equipment Ltd., Unit H 7/9, Blackpole Trading Estate, Worcester, Worcs WR3 8SG
Tel: 0905 - 52717 Telex: 312242 MIDTLXG

ON THE COURSE



Water is an attractive feature of the course at St Mellion.



Good use has been made of water at the 18th hole of the Johnny Miller course at Collingtree Golf & Country Club.

green.

Penncross was used on the tees and the green where it has provided a smooth resilient surface for putting. I was also impressed by the colour and density of cover achieved. The remarkable vigour and strong stoloniferous habit of this bent grass seems to keep annual

meadow grass at bay and is extremely hard wearing. It has the advantage of rapid establishment and can cope with intensive play.

Because it has such vigorous growth it has to be carefully managed, frequent scarification or verticutting is needed to reduce thatch accumulation it also requires nitro-

gen at low rates every six weeks in the form of sulphate of ammonia. It will make excellent root growth on sand greens or those constructed on a soil peat and sand mixture. Penncross has been successfully used on as many as 50 golf courses in this country.

I have also seen the new Johnny Miller course at Collingtree Golf Village, Northampton owned by International Resort Holdings. Plans for the new complex include low density housing, 180 residences, private nursing clinic and retirement homes along the fringe of the playing areas.

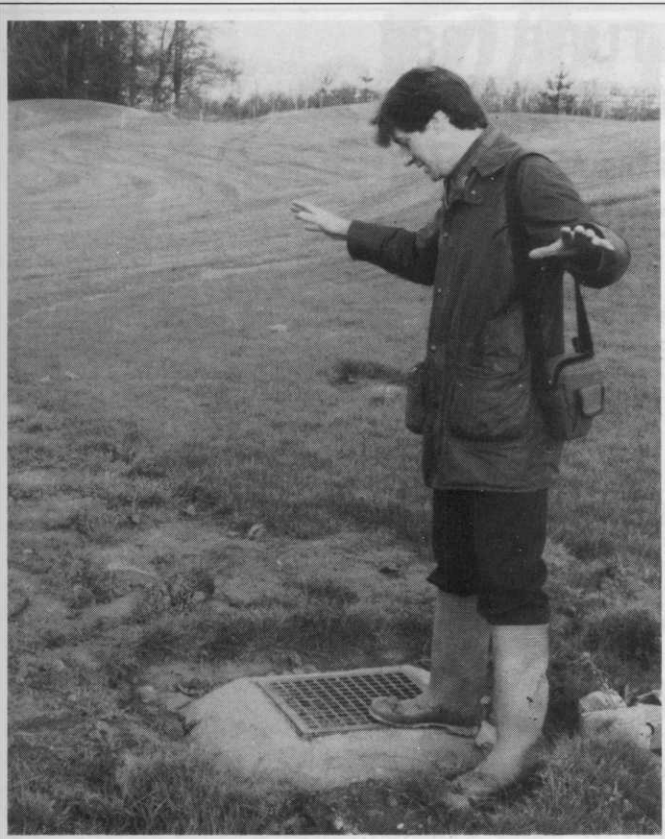
The original site for the course, a flat area of land has been skilfully transformed by earthmoving techniques to create a gently undulating landscape ideal for golf. Excavation work for lakes and swales has enabled thousands of cubic yards of soil to be moved around for the construction of mounds, greens, tees and bunkers that now look as though they had been there from time immemorial. The golf course architect has obviously considered ease and economy of course upkeep by thoughtfully providing gentle grades for machinery maintenance which will allow the work to proceed smoothly and quickly.

Peter Jones, course manager at Collingtree is full of enthusiasm for the project and working hard with his staff to get the course completed for the opening date in 1990. Their modern equipment building and staff quarters has all the facilities and is centrally situated for easy access to most parts of the course.

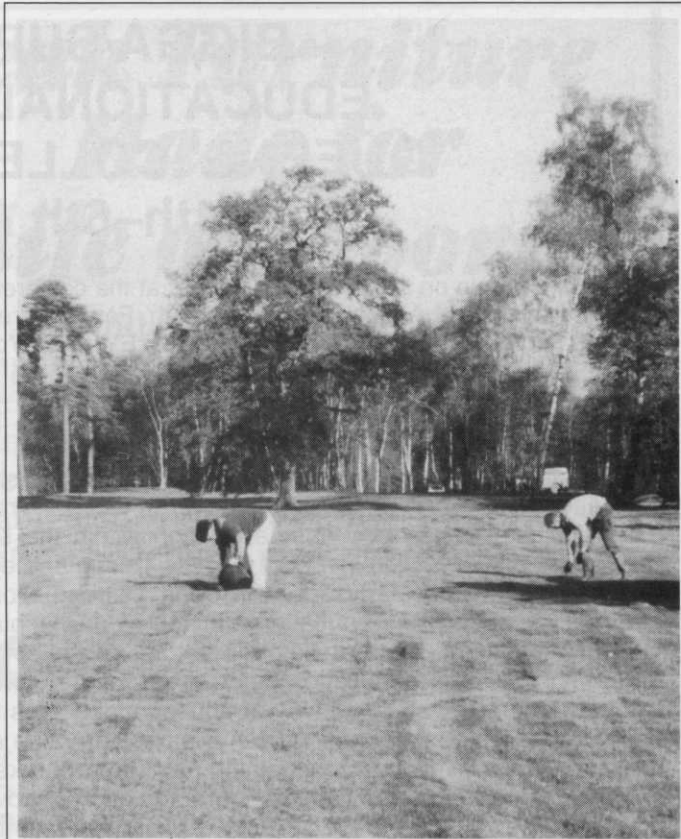
Stone paths to take golf buggies around the course are also being installed to absorb some of the wear and tear that results from this traffic movement. Storm water drains in catchment areas on the fairways are designed to discharge high volumes of water through a network of large bore pipes to adjacent lakes on the course which will also be used for irrigation.

British Seed Houses supplied all the grass seed for the 27 hole golf complex. The Penncross Bent chosen for the greens and tees has rapidly established within a short period and Peter Jones was pleased with the progress of these important surfaces. The fairway seed has also germinated satisfactorily at this stage and some fairways sown

ON THE COURSE



Peter Jones, Course Manager at Collingtree Golf & Country Club explains how the storm water drains in the catchment areas are designed to work.



Stone picking on one of the fairways on the new South Course at Wentworth.

earlier look good enough for play already. The mixture - 20 per cent Frida chewings, 25 per cent Checker chewings, 20 per cent Boreal creeping red fescue, 10 per cent Logro slender creeping red fescue, 10 per cent Highland bent and 5 per cent Julia smooth stalked meadowgrass.

All the Surrey heathland courses are popular venues for golf enthusiasts, particularly Wentworth where the completion of the new South Course to add a third course to the complex is a significant landmark in the history of this famous Club.

This is no ordinary layout - par 72, 7,100 yards - it is planned to present a real test of championship golf amid heath, heather and tree lined surroundings - a golfer's dream. The construction work was undertaken by Golf Landscapes to a design specification by John Jacobs Associates. With the contractors work completed the important phase of grooming and getting the course ready for play is a priority for Michael Hunter, clerk of works and the greenkeeping staff who are looking forward to the task they have

ahead. It is anticipated the new course will be open for play in the spring of 1990.

The above average size greens have been laid with turf from Inturf Ltd on a sand base to a specification by the Sports Turf Research Institute. British Seed Houses A12 fairway mixture has been used on the fairways which along with the greens are already looking in good shape. The amount of growth and density of cover should provide an ideal playing surface to cope with all the wear and tear of play.

WYKE GREEN GOLF CLUB

require

2 ASSISTANT GREENKEEPERS

Applicants must have at least two years experience in all aspects of Greenkeeping and knowledge of course machinery.

Salary negotiable. No accommodation available.

Application with full C.V. to:-

The Secretary,
Wyke Green Golf Club,
Syon Lane, Osterley,
Isleworth, Middlesex. TW7 5PT

FOR SALE

E-Z-Go Attachments

Mete-R-Matic Top Dresser
Cyclone Spreader (Electric)
Dedoes Hydraulic Frame
Shallow Slitter

Andrews Billy Goat Self-Propelled Vacuum Sweeper
Auto Certes BSA Engine+parts

Offers to Gay Hill Golf Club, Alcester Road
Hollywood, Birmingham B47 5PP
Telephone: 021 430 8544

EDUCATION

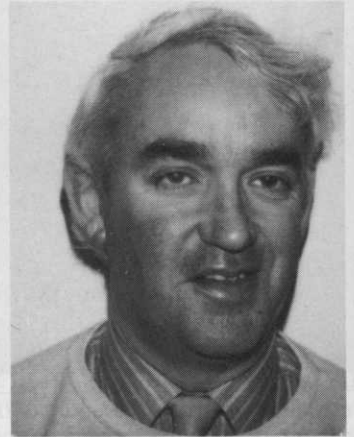
BIGGA/SUPATURF 1989 EDUCATIONAL CONFERENCE QUEENS' COLLEGE, CAMBRIDGE, 4th-6th April, 1989

In this third profile on speakers to be heard at the conference, *THE GOLF COURSE* this month features Tony Gentil of the Cheshire College of Agriculture, Reaseheath. For Conference details, please contact Neil Thomas, Executive Director, BIGGA, Sports Turf Research Institute, BINGLEY, West Yorkshire, BD16 1AU. Tel: 0274-560556

TONY GENTIL

Tony Gentil is Deputy Head of Horticulture at the Cheshire College of Agriculture, Reaseheath - one of the approved Greenkeeper Training Colleges. Tony has extensive experience of further education within the sphere of horticulture and management. He is also involved with the writing and editing of educational texts and has been particularly active in open learning. Tony will be elaborating on different aspects of the educational minefield and explaining the complexities of current educational opportunities. His lecture will explain the changes in philosophy and attitude towards education being developed in conjunction with the industry rather than in the traditional way of educational bodies telling the industry what it should need, and his lecture will be of particular value as the Association moves forward with its education and training plans for greenkeepers.

Tony promises to offer some encouraging and controversial insights and delegates should thereafter have a much better understanding of terms like BTEC, NCVQ, CPVE, TVEI, 'Open Learning', and Distance Learning! Conference attendees can look forward to an informative lecture.



NATIONAL TOURNAMENT 1989

Members should note that this will be held at The Lyme Regis Golf Club, Lyme Regis, Dorset from 14th-16th August 1989.

For full details, please contact

Gordon Child, Regional
Administrator, Archways, Churston
Road, CHURSTON FERRERS, Nr
Brixham, South Devon, TQ5 0HU.
Tel: 0803-844056.

G.C.S.A.A. CONFERENCE AND SHOW, ANAHEIM, CALIFORNIA 6th-13th FEBRUARY, 1989

A BIGGA party of thirty persons attended the recent G.C.S.A.A. Conference and Show. A full report with photographs on this major greenkeeping event will appear in the next issue.

Gloster

Fine Teak Furniture Made for life outdoors



Parks and gardens are the perfect setting for our traditional, craftsmen-made range of tough, solid teak seats.

Inscription service available. Rapid delivery all year round. For more information and a copy of our Public Authority Furniture brochure, please contact:-

Gloster

Gloster Leisure Furniture Ltd.,
Universal House, Pennywell
Road, Bristol BS5 0TJ.
Telephone: Bristol (0272) 540349



NOTHING ELSE COMES CLOSE.

Any weather, any terrain.
When it comes to sheer hard work,
unfailing reliability and mowing
excellence, nothing comes close to
Beaver.



TECHNOLOGY HAS ITS REWARDS

BEAVER

Beaver Equipment Ltd.
U.K. Sales: Spellbrook, Herts. CM23 4BU. Telephone: Bishop's Stortford (0279) 723444
Export Sales: Artex Ave., Rustington, W. Sussex. BN16 3LN, England. Telephone: (0903) 783155 Telex: 87683

AROUND THE GREEN

BRITISH AND INTERNATIONAL GOLF GREENKEEPERS ASSOCIATION

MIDLAND AND NORTH WALES SECTION

Mid Anglia Section

The first meeting of 1989 was held at Beadlow Manor Hotel, Golf and Country Club on Monday, 23rd January with a look back over 50 years in Greenkeeping through the eyes of Bob Plain.

Bob's early days at Gullane were spent mowing greens with a 16" Certes push mower, top dressing fairways with dune sand, controlling weeds by digging them out with hand forks.

Soon after World War II, Bob moved to the beautiful Beaconsfield Course in Bucks where he was to spend well over half his working life. He recalled the using of Morrow Meal as a worm killer, which needed hundreds of gallons of water to wash into the turf and then the sweeping up of barrows-full of worms as they surfaced. In later years, arsenate of lead, an evil but very effective worm-killer was introduced only to be replaced in the '60's by Chlordane. The introduction of Ransomes Overgreen was a major innovation in the late '40's but things really took off in the '60's with the first pop-up irrigation system installed at Handsworth in 1964 and in the early '70's with Triplex Ride on mowers.

Bob has also derived much pleasure from his impressive playing record, winning the Greenkeepers Annual Tournament at Sudbury Golf Club in 1947 and tie-ing for the News of the World Scratch Cup at Little Aston in 1967, only to lose the 18 Hole play-off.

Bob's talk was both interesting and colourful and was followed by a brief look further back to 1923 with a short film of a Professional Golf Tournament at Verulam Golf Club, sponsored by Mr Samuel Ryder and his brother, who a few years later donated the Ryder Cup. Each Professional was paid £5.00 to cover his expenses for the day, and the 36 hole Tournament was won by Arthur Havers, the Open Champion, whose Second Round 67 was 10 under par (bogey) and the original Course Record was bettered no less than 21 times during the day.

The film was in remarkably good condition and the holes shown have not changed in 65 years. We thank Mr Len Ryder, grandson of the sponsors, for the loan of the film and to Bob Plain for what was indeed a fascinating glimpse into the history of our great game.

Out thanks also to Mr J Minashi, managing director and members at Beadlow for the use of the club house.

We return to Beadlow Manor on Wednesday, 26th April for the Spring Tournament over 27 holes. The entry fee is £17.50 for coffee, lunch and evening dinner. This should be sent to:- Ken Bunting (0442-843359) by 19th April.

Other dates for this year's diary include:- Monday 10th July, Summer Tournament at Berkhamsted Golf Club, 36 holes. Tuesday 26th September Autumn Tournament at Buckingham Golf Club 27 holes. Thursday 7th December Christmas Scramble at South Beds Golf Club, 18 holes.

R J GOODWIN

Midland Section

Our Christmas Tournament in December attracted a record number of players and guests, over the Whittington Barracks Golf Club. Our thanks to Trevor Morris and his staff for producing the course in wonderful condition on such a still and sunny day after early frost. Two starting points proved its worth with all of us sitting down to our traditional Christmas meal by 5.30pm. Many thanks to the inside staff and also to the gentlemen who provided us with coffee and mince pies at the halfway point. First prize was won by E. King, with Ted Evans in second place. The AGM on the 13th December at Edgbaston Golf Club was conducted with 22 members present to elect the same officers and Committee as last year, plus one new Committee member Dean Cleaver.

Our 1989 Golfing Competitions are booked, the first one will be on Tuesday 25th April at Bridgnorth Golf Club, fee £12.00 per person, closing date for entry, 5th April. You will all receive an entry form for all the tournaments sometime in March. Remember you MUST always book your entry through Peter Richmond, including your entry remittance. NO-ENTRY on the day.

On the 9th January Mr David Jenkins (Charterhouse Turf Machinery) gave a very interesting talk on that age-old problem of "Compaction". He gave some very useful advice on the setting-up of a Verti-Drain machine, for different depths pattern and lift. Many thanks to David Jenkins and the 20 or so members for attending.

March 29th Moor Hall Golf Club. Your chance to hear and put your questions to Neil Thomas! Hope to see you there.

I R TOON

East Midlands Section

For the first time we held a golf tournament prior to the AGM held at the Erewash Valley Golf Club, Ilkeston, Derby on 14th November. Fifteen members played on a very successful day with the main prize donated by Maxwell Hart Limited. Our thanks to Erewash Valley Golf Club for allowing us the courtesy of their course, to the inside staff for the hospitality and the excellent meal, and to Graham Arnold and his staff for the very good condition of his course. Nick Danvers, our retiring Chairman, presented the winners with their prizes who were as follows:- Winner - G. Arnold, 2 up. Second - R Willars, 1 up OL9. Third - M Billings, 1 up. Fourth - D Leatherhead, 1 down. Fifth - G Mitchell 2 down.

The AGM at 6.30pm was attended by 18 members and the following officers were elected:- Chairman Nick Root, Vice-Chairman Richard Barker, Secretary Roger Willars, Committee Graham Arnold, Nick Danvers, Paddy McCarron and Gordon Mitchell, Section representatives Nick Danvers and Roger Willars. Another first time event was the Rigby Taylor Winter Stableford held at Birstall Golf Club on Wednesday 14th December. This event to be held annually was a bring and win competition with 21 members and guests attending. Our thanks to Birstall Golf Club for allowing us the courtesy of their course, to Doreen and Reg James for the excellent Christmas Dinner presentation and hospitality shown to us, and the outside staff were also thanked for the very good condition of their course. Steve Blakeman of Rigby Taylor presented the divisional winners with their Rigby Taylor Salvers, who were:- 0-14 R Willars, 40pts. 15-28M.Hopkins, 33 pts. As it was a bring and win competition, all competitors took something homewith them at the end of a successful day.

R W WILLARS

Berks, Bucks & Oxon Section

All members of the Section please note details for the forthcoming Spring Tournament:- To be held at Badgemoor Park Golf Club 24th April, 1989. The entry fee