

Power Force



All SISIS machines are designed, patented and manufactured in Great Britain.



SISIS now offer a range of p.t.o. driven implements for use with suitable compact tractors. The range includes top-dressers, Rotorake, sweeper, aerator, sprayer and spreader. Full details from your SISIS Area Representative or by contacting us at the addresses below.

Ask for a Demonstration!

- *12 Month Warranty*
- *Choice of Finance Arrangements*
- *National Spares & Service Network*

sisis

SISIS EQUIPMENT (Macclesfield) LTD., Hulley Road, Macclesfield, Cheshire. SK10 2LZ Tel: (0625) 26363 Fax: 27426 Telex: 669795
SISIS Centre In Scotland, The Roundel, Middlefield Industrial Estate, Falkirk. FK2 9HG Tel: (0324) 29635

Serving Groundsmen and Greenkeepers for nearly 60 Years

the Golf Course

Publisher
Michael Coffey

Managing Editor
Stanley Ellison

Executive Editor
John Lelean

Contributing Editors
John Campbell
Ian Greenfield
Jim Arthur

Machinery Editor
Michael Williams

Advertisement Manager
Beverley Redman

Classified Sales
Chris Slaughter

Advertising Production
Linda Baker

The Golf Course, incorporating Golf Greenkeeping is published monthly by Park View Publications Ltd. It is the official magazine of the International Greenkeepers Association.

Chairman
Michael Coffey

Managing Director
Stanley Ellison

Editorial, executive and advertising offices:
201-205 Kingston Road,
Leatherhead, Surrey. KT22 7PB
Tel: 0372 370177 Fax: 0372 362091

Circulation, subscription and advertising production offices: 29 Station Road, Dovercourt, Harwich, Essex.
Tel: 0255 507526 Fax: 0255 508483

© Copyright 1989
The Golf Course

Typesetting and artwork by
Fore Golf Publications Ltd.,
Dovercourt, Essex.
Printed by J.B. Offset,
Marks Tey, Colchester, Essex.

CONTENTS

the Golf Course



The new Eden Course at St Andrews under construction by Brian Pierson

JUNE 1989

16

Never use water to make greens soft

Jim Arthur discusses the use of irrigation systems and pop-up sprinklers

18

Geotextiles in Golf Course Construction

How filler membranes are being used in ground engineering on golf courses

20

Keeping Royal Portrush in top condition

Sid Arrowsmith, head greenkeeper talks about his management of this leading Irish golf course

24

Enville has long term improvement plans

John Lelean visits this staffordshire course and meets John Palmer who has worked on the course since 1972

28

Scots aim for better practical training

Elmwood hopes to start one-year full time courses

30

Floral centre pieces for the Ryder Cup

Nearly 30,000 blooms will be planted at The Belfry

Departments

8

Clippings by the Mower

9

Out and About

A round-up of news and new products

32, 33

Appointments

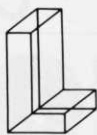
34

Buyers Guide

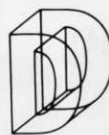
A product and service information to suppliers



CONCEPT



LEISURE

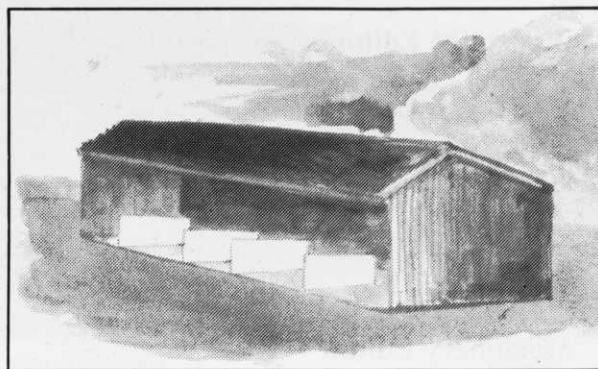
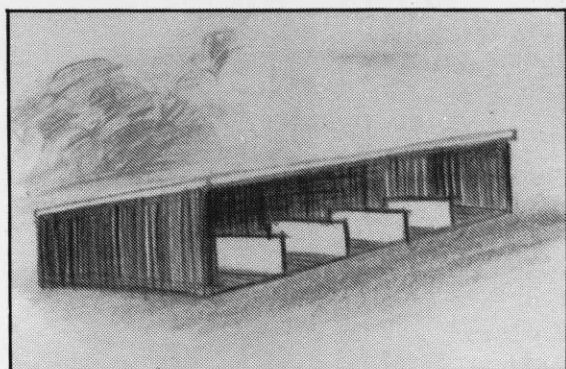


DESIGN



**Unit 6
Horsehay Works
Telford
Shropshire TF4 3PY**

Telephone: 0952 505771
Messages: 0952 503344
Fax: 0952 502152



The ideal 20th hole for your golf course

**— Just look at the benefits of covered
practice facilities**

- ★ **All weather availability**
- ★ **The facility for floodlit play**
- ★ **Vending machines installed**
- ★ **Minimum maintenance**
- ★ **No supervision**
- ★ **Maximisation of profits**
- ★ **Minimisation of tee damage**

**— in fact don't you owe it to your members to offer them all weather, anytime
practice facilities!**

From as little as

£800

(per bay — per tee)

Why not give Leisure Concept Design a ring and discuss your requirements.
We will meet your design and environmental requirements offering a wide
choice of materials.

We are the leaders in this field and list many satisfied clubs amongst our
satisfied clients.

ISEKI

economy!



The Iseki TA Range means much more than just power with economy, it's one of the most adaptable ranges around.

True four wheel drive, from 33 to 50 horsepower with Iseki engineering excellence built in as standard, 2 Speed Power take off and a choice of front, mid or rear mounting to suit your operations. Shuttle gears too, with 16 forward, 16 reverse fully synchromesh to get you working at exactly the right speed.

A choice of attachments to suit — built to take advantage of the power and economy the Iseki TA Tractors offer you — whatever the operation.

Iseki TA, just a part of the driving force from Iseki now available with COMPREHENSIVE FINANCE SCHEMES to suit your budget through participating dealers.

Get the facts on the TA now by ringing Iseki Freephone 0800 378 939 or post the coupon today.

To: Iseki UK Ltd., The UK Compact Tractor Centre, The Broadway, Bourn, Cambridge CB3 7TL. GC
Please send me the facts on the Iseki TA Range.

Name _____

Company _____

Address _____

Postcode _____

ISEKI
The driving force

TRACTORS · MOWERS · POWER EQUIPMENT · ATTACHMENTS

RÉSUMÉ



FRENCH

Des systèmes d'irrigation qui surgissent automatiquement existent maintenant sur tous les terrains de golf modernes. Cependant, les greens peuvent s'engorger d'eau et se couvrir de chaume à la suite d'une mauvaise utilisation de ces systèmes. Jim Arthur, célèbre agronome et expert-conseil en matière de terrain de golf discute les méthodes d'irrigation et donne des conseils généraux sur la bonne utilisation de l'eau sur les terrains de golf. Page 16. Sa réponse au problème de l'irrigation est la suivante: peu et souvent, environ 800-1000 litres d'eau pour 500 mètres carrés de green.

A la Page 18, Alan Cudmore discute la manière dont l'utilisation des membranes géotextiles dans la construction peut permettre d'améliorer les terrains de golf. La fonction de filtration des géotextiles est soulignée dans l'article ainsi que son utilisation dans la construction des bunkers et des lacs.

Le problème des prés d'herbe annuels (poa annua) sur le terrain de golf de Royal Portrush est désormais contrôlé par les méthodes adoptées par le responsable en chef Sid Arrowsmith sur ce parcours de golf irlandais de haut niveau. Une interview Page 20 de ce grand expert en matière de gestion de terrain de golf révèle la façon dont les pulvérisations foliaires organiques de produits tels que le "Maxicrop" sont utilisées pour améliorer l'épaississement des fétuques et des agrostides sur les greens et les tees. D'autres problèmes auxquels Sid Arrowsmith au Royal Portrush doit faire face sont les brûlures causées par le vent et les rafales givrantes qui se produisent en hiver.

Notre rubrique régulière "Sur le Terrain" Page 24 décrit ce mois-ci la visite de Enville Golf Club dans le Staffordshire où John Lelean parle à John Palmer qui travaille sur ce parcours pendant 17 ans. Il est prévu de remplacer tous les appareils à moteur à essence par le diesel. John Palmer parle du drainage et du chaume. Les greens de Enville sont percés de trous à des centres de 2.5 cm régulièrement. Un drain Verti a été utilisé l'année dernière pour

percer une couche compacte dure et la croissance des racines atteint désormais 23 cm l'aération des fairways est pratiquée régulièrement, ce qui favorise le drainage.



SPANISH

En la actualidad, los sistemas automáticos de irrigación son muy comunes en todo campo moderno de golf. Sin embargo, el uso incorrecto ha tenido como resultado la inundación del campo de golf y el que sufra de pajilla. Jim Arthur, un agrónomo bien conocido y asesor en campos de golf, analiza los métodos de irrigación y aconseja acerca del uso correcto de agua en los campos de golf. Página 16.

Su respuesta al problema de irrigación es: poca y con frecuencia, aproximadamente 1000-1200 litros por 500 metros cuadrados de campo de golf. Alan Cudmore, página 18, considera cómo el uso de membranas geotextiles en la construcción puede ayudar a mantener mejores campos de golf. La función de filtración de los geotextiles se subraya en el artículo, además de su empleo en la construcción de hoyas de arena y en la construcción de lagos.

El problema de los pastos anuales de pradera (no anuales) en el campo de golf Royal Portrush se ha controlado en la actualidad mediante los métodos adoptados por el cuidador en jefe de este importante campo de golf irlandés, Sid Arrowsmith. En una entrevista, en la página 20, este experto líder en la administración de campos de golf revela la forma en que los pulverizadores foliares orgánicos, como por ejemplo Maxicrop, ayudan a fortalecer canuelas y agrostidas en los campos de golf y tees. Otros problemas a los que se enfrenta Sid Arrowsmith en el Royal Portrush son las quemaduras causadas por el viento y las heladas por viento que ocurren en el invierno.

Nuestro artículo regular, On the Course, página 24, presenta este mes una visita al Campo de Golf Enville en Staffordshire en donde John Lelean platica con John Palmer, quien ha trabajado en este campo de golf durante 17 años.

Se tienen planes para reemplazar todos los equipos que funcionan con gasolina por otros que funcionan con diesel. John Palmer platica acerca del drenaje y la pajiza. Los campos en Enville se tratan con puas haciendo orificios a distancias de 2.5cm de manera regular. El año pasado se empleó un drenaje Verti para romper una capa compacta dura y el crecimiento de las raíces es en la actualidad de 23 cm. Se está empleando regularmente aereación. Fairway y ésta ayuda con el drenaje.



GERMAN

Automatische 'pop-up'-Bewässerungssysteme werden heutzutage auf jedem modernen Golfplatz eingesetzt. Falscher Einsatz dieser Systeme hat jedoch zu Staunässe im Grün geführt, das dann zusätzlich auch strohig wird. Der bekannte Agronom und Golfplatzberater Jim Arthur erörtert die verschiedenen Methoden der Bewässerung und gibt allgemeine Hinweise zum korrekten Einsatz von Wasser auf Golfplätzen. Seite 16. Seine Lösung zum Bewässerungsproblem heisst 'wenig, dafür aber oft' und er empfiehlt ca. 1000-1200 liter pro 500 Quadratmeter Puttergrün.

Alan Cudmore erklärt auf Seite 18, wie die Verwendung von Geotextilmembran bei der Konstruktion zu besseren Golfplätzen führt. Die Filtriereigenschaft von Geotextilmaterial sowie sein Einsatz bei der Konstruktion von Bunkern und Seen wird in diesem Artikel hervorgehoben.

Das Problem des jährlich auftretenden Wiesengrasses (poa annua) auf dem Royal Portrush Golfplatz wird nun durch die Methoden von Sid Arrowsmith, dem Hauptbetreuer der Grüns dieses berühmten irischen Golfplatzes unter Kontrolle gehalten. In einem Interview auf Seite 20 verriet uns dieser führende Experte der Golfplatzverwaltung, wie die Verwendung von organischen Laubsprays, wie z.B. Maxicrop, bei der Verdichtung des Fesques-Grasses und der Beschungen auf Grüns und Abschlageplätzen hilft. Zu weiteren Problemen, die Sid Arrowsmith auf dem Royal Portrush antrifft, gehören Verbrennung durch Wind und vom Wind herangetrager Frost, im Winter.

'Auf dem Golfplatz', unser regelmässiger Artikel auf Seite 24, besucht diesen Monat den Enville Golf-Club in Staffordshire, wo John Lelean sich mit John Palmer, seit 17 Jahren Betreuer des Platzes unterhält. Es bestehen Pläne, alle benzinangetriebenen Geräte durch Diesel zu ersetzen. John Palmer spricht auch über Entwässerung und Strohbildung. Die Grüns auf dem Enville-Platz werden regelmässig durch Hohlbohrung bei einem Abstand von 2.5 cm. entwässert. Letztes Jahr wurde ein Verti-Abfluss zum Durchbruch der festen Erdlage eingesetzt und die Wurzeln wachsen nun 23 cm. in den Boden. Die Golfbahn wird regelmässig belüftet und dies hilft ebenfalls bei der Entwässerung.



The Professional's Choice

Wherever top sporting events are held, Toro automatic irrigation is invariably used as part of the all important turf management programme. We would say that of course - but don't just take our word for it, read what the leading professionals have to say on the subject...



"Toro single head control allows me total freedom to work on the golf course as and when I decide. Top dressing, fertilisers, silting and watering - the Toro 650 automatic watering system helps at every stage of my daily maintenance programme - I don't bother watching weather forecasts any more!"

**Bob Moreton - Head Greenkeeper
The Berkshire Golf Club**



"All the remedial work we carry out at Wimbledon is totally reliant on the automatic watering system. The Toro 650 system gives me complete control of my own environment - especially when I need to cut just nine days after seeding!"

**Jim Thorne - Head Groundsman
All England Lawn Tennis & Croquet Club**



"It's marvellous, the Toro system - a mixture of 650 and 690 sprinklers really is an invaluable aid to our day-to-day maintenance programme. Installed sixteen years ago, I cannot remember experiencing any serious problems with the watering system. . . Maintenance? We do most of it ourselves!"

**Gordon Hiscock - Head Groundsman
Ascot Racecourse**



"Water when I need it is essential to help maintain the Wembley pitch which requires constant overseeding. The Toro 690 automatic system is an important preparation tool which allows my staff to work on the pitch between watering - imagine it, it used to take 8 hours to put water on using mechanical sprinklers!"

**Steve Tingley - Head Groundsman
Wembley Stadium Limited**



"The best bowling surfaces are undoubtedly those which are firm, consistent in terms of speed - and as level as one can possibly make them. Ideally, a mixture of 20% soil to 80% sand helps promote excellent quality turf - this plus an automatic watering system such as the Toro 650 design really puts the groundsman in control. . ."

**David Bryant - World Singles Champion
Willie Wood - World Singles Finalist**

The bottom line: It costs no more to enjoy the same high level of automated excellence which the top professionals rely on! Hundreds of Toro users will vouch for that - but prove it yourself, ask Toro to bring you and your club up to date with the facts.

Telephone or write today.



Excellence in Irrigation

TORO IRRIGATION LIMITED
Unit 7, Millstream Trading Estate
Ringwood, Hampshire BH24 3SD
Telephone 0425-476261



MEMBER
BRITISH TURF
IRRIGATION
ASSOCIATION

CLIPPINGS

By The Mower

Greenkeepers golf tournament in Switzerland

We hear from ex-pat. Ian Tomlinson that he is organising a Greenkeepers Golf Tournament in Switzerland and inviting eight of the clubs on the French side of Lake Geneva to take part. Ian, who moved out to the Lausanne Golf Club as course manager some four years ago has to complete his course alterations at the same time as maintaining his greens through the playing season. Come november, everything is buried under several feet of snow, so it is on with the skis until the thaw reveals the chaos to be cleared before the golfers arrive. He is hoping that this first Swiss Greenkeepers Championship will attract a sizable entry. We hope the Brits will give a good account of themselves with the little white ball.

Open day at the STRI

The Sports Turf Research Institute at Bingley are throwing open their doors for two days on the 28th and 29th June to celebrate the 60th anniversary of the Institute. Great strides in the work of this self financing body have been made under the directorship of Dr Peter Hayes and although golf course work has always been a principle market, other sports, particularly football and racing have made an increasing call on the services offered by the STRI.

Visitors to the trial grounds will be able to see how turfgrass cultivators are tested, various methods of construction, with particular emphasis on sand green research.

It promises to be an educational couple of days. We wonder just how many laymen members of golf green committees will take advantage of an opportunity to improve their knowledge?

Hawtree & Son to design new Harrogate course

Harrogate will have yet another golf course to add to those at Oakdale, Starbeck and Pannal in the near future.

It will be sited inside 140 acres of Rudding Park, where the magnificent Rudding House has already been converted into a luxury hotel.

The owners have been looking at suitable land for an 18 hole golf course for some time and there were intentions to use adjacent farm land and disused railway line, but they have now decided to put the course inside the park.

The design of the £1m plus scheme has been contracted to Hawtree & Son.

Technical hitch on Nomix Panther Lance

The revolutionary hand held Nomix Panter Compact Lance, designed to spray chemicals with pin point accuracy with minimal drift, has met with a manufacturing technical hitch according to Marketing Manager Mark D'eath from Chipmans.

The lance was due on the market this month but it is likely to be delayed until sometime early in June.

It appears the American end of the project have put in such a large order it has caused problems with the launch in the UK.

The Nomix lance is a completely self contained unit with its chemical pack loaded into the handle in a similar way to the arming of a hand held machine gun. The pack contains just 750mls of chemical, weighs under 2kgs, and using a total droplet control system can cover three miles of fencing with a 15 centimetre band.

Message from East Anglia

Message from Mick Lathrope, secretary of East Anglian Section BIGGA wishes the Golf Course well as an independent magazine. Mick says he still thinks the magazine is the best greenkeepers.

No Ryder Cup tickets for BIGGA members

Neil Thomas, BIGGA's administrator, has failed in his attempt to negotiate with the PGA over complimentary tickets for members of the association. The PGA have given a real snub to members of BIGGA over their request and have suggested if any greenkeeper who is in BIGGA wants to see the Ryder Cup they apply for tickets as a member of the general public.

OUT AND ABOUT



Smiles all round! Peter Roberts (left) general manager Toro Irrigation, David Golding education officer BIGGA and right Graham Dale sales manager Toro mower division of Lely Import Limited, reveal the Young Greenkeeper's award plaque.

"Young Greenkeeper of Year" Scholarship includes US trip

Following a series of recent discussions, David Golding, BIGGA's Educational Officer, has now confirmed the creation of a new scholarship award for British student greenkeepers. Known as the "Toro Young Greenkeeper of the Year Award" the scheme is open to Phase II City & Guilds and Scotvec students studying at, and nominated by, any of the ten "Turf Colleges" recognised by the Greenkeepers Training Committee. The scholarship features an eight week visit to the USA. Sponsorship for this excitingly new development is provided by the Toro Company through its UK distributors, Ringwood based Toro Irrigation Ltd and the Toro Mower Distribution Division of Lely Import Ltd, St. Neots.

"We are delighted that Toro have contributed in such a positive and practical manner" says BIGGA's David Golding. "As for the scholarship, it is a wonderful opportunity for a young greenkeepers to visit our cousins across the water and learn from the best of their golf course management techniques."

During the scholarship time spent in America, the award winner will join the

"Winter School for Turf-grass Managers" course at the University of Massachusetts. The course, which is run by the University's Department of Plant & Soil Sciences, will last for six weeks and cover subjects ranging from soil fertilisation, grass diseases, golf course irrigation, work planning and management to servicing an internal combustion engine!

In addition, the winning student will also spend time at the Toro Corporate headquarters and Mower Division in Minneapolis and at the Toro Irrigation manufacturing complex, Riverside, California.

"Both Graham Dale and myself are keen to promote added interest to the effort many young greenkeepers are putting into their studies" says Peter Roberts, general manager, Toro Irrigation Limited. "As their knowledge and experience grows, they will be looking for even more sophisticated equipment to help them during their working careers - so why not help them now!"

Turfmaster Manager

As part of moves to strengthen manufacturing and quality control, David Cheshire has been appointed manufacturing manager, of Turfmaster Machinery.

Mr Cheshire is a product engineer with a

design and project engineering background. He joins Turfmaster with extensive experience in a number of light engineering companies, particularly Electrolux and Millpledge Systems.



David Cheshire

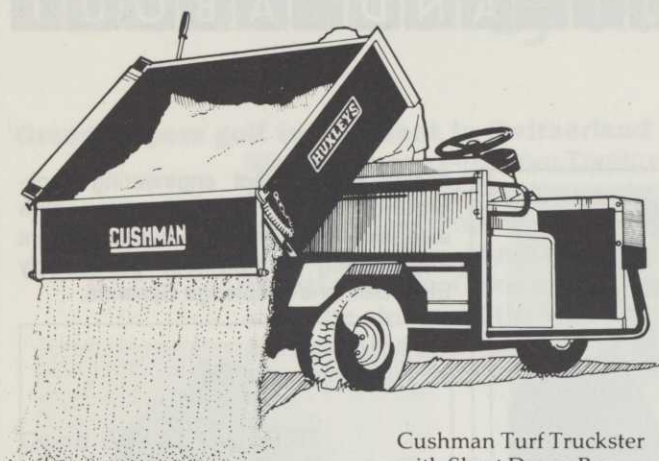
Cotswold open day for Toro

The Cotswold Hill golf club wanted 700 members to have exactly the right insight into how the club was maintained, according to Head Greenkeeper Tony Williams. "It is very important that all members, get some understanding of the work done through the winter and summer months and see the equipment required to maintain a first class course."

An Open Day was held whereby all members were welcome to the club to find out for themselves how much time and effort is spent maintaining the course (designed by Course Director Maurice Little) to the exceptionally high standard enjoyed today.

Tony, who has four ground staff working for him, described what is entailed in achieving the perfect playing conditions. The members day coincided with the delivery of four new Toro turf machines, two Greenmaster 3000's and two Reelmaster 216 2-wheel drive mowers supplied by County Mowers, of Whitney, Oxford. Tony, who started work at Effingham Golf Course with his father admitted that he will only use Toro Greenmasters on his greens. He has had demonstrations of other greensmowers but always comes back to the Toro. After liaising with Maurice Little and Brian Berry, chairman of the greens, they agreed that the lightness of the Toro Petrol Greensmower was

Lighten your load with The Cushman System.



Cushman Turf Truckster
with Short Dump Box.

Cushman and Huxleys bring you the very best
for load movement, transportation and turf care
in one dedicated machinery system –
The Cushman Turf Care System.

Please call us for fully-descriptive literature today.

HUXLEYS GRASS MACHINERY
THE DEAN, NEW ALRESFORD,
HAMPSHIRE SO24 9BL
Tel: 0962 733222 Fax: 0962 734702
Telex: 894426



THE BRITISH MASTERS.

Lindum are Masters of
growing fine turf for golf
greens and tees.

"I am absolutely delighted with the quality of the Lindum turf
supplied for the greens of our new south course." Michael Hunter, Estate
Manager, Wentworth Golf Club.

Need we say more? If so, ask for a copy of our
new brochure.

LINDUM Seeded
Turf
FOR LANDSCAPE AND LEISURE

For more information, telephone Stephen Fell, 065 261 329, Lindum Seeded Turf,
Church House, Horkstow, Barton on Humber, South Humberside DN18 6BG.

THE MASTERS OF FINE TURF PRODUCTION

JACK McMILLAN HAS A WORLD OF EXPERIENCE OF FUNGICIDES



Eminent Head Greenkeeper with a leading
role in the British and International Golf
Greenkeepers Association, Jack McMillan
rightly takes pride in the condition and
presentation of his professionally managed
turf.

Rhône-Poulenc, previously known as May
and Baker, is pleased to have been a major
supplier of fungicides, pesticides and weed
killers to Jack McMillan for over 30 years.

Jack finds it reassuring that Rhône-Poulenc
is a major multi-national chemical company
employing over 100,000 people in 140
countries world wide. And that we have an
international tradition of research and
development second to none.

So, for product information and advice on
your turf and grass care problems contact us
now — and welcome to the world of
Rhône-Poulenc.



RP RHÔNE-POULENC

Environmental Products

Regent House Hubert Road Brentwood Essex CM14 4TZ
Tel: Brentwood (0277) 261414

QUINTOZENE W.P. CONTAINS QUINTOZENE
ROVRAL CONTAINS IPRADIONE
MILDOTHANE CONTAINS THIOPHANATE-METHYL

READ THE LABEL BEFORE YOU BUY: USE PESTICIDES SAFELY