

# OUR EQUIPMENT COPE WITH NATURE'S TREADMILL...

Nature never relents. Maintaining the condition and appearance of parks, golf courses or sports grounds is rather like trying to travel up a 'down' escalator . . . it demands constant effort just to stay abreast and its hard not to lose ground. Bob Andrews' equipment ensures that any project stays manageable . . . a comprehensive range of high performance machines that are easy to operate, built to last and designed to handle the toughest tasks, swiftly and effectively. Mowing, spreading, scarifying, leaf collecting . . . whatever the job, whatever the conditions, Bob Andrews Ltd. can provide the equipment to keep any situation well under control.

## TRUE TEMPER CYCLONE SPREADER

The pedestrian "Cyclone" is as impressive as its name implies. A durable and well-designed unit that spreads any free-running material with an efficiency that's outstanding. No heavy concentrations to damage the turf, no breaks in the pattern leaving sections untreated, no underlap, no overlap . . . just a smooth and uniform delivery at a rate between 1/2 - 8 oz per sq. yd. and a spread width of 9 ft.



## BLUEBIRD TURF IMPROVER

It's a slitter, it's a scarifier, it's a vertical mower . . . the choice is yours . . . and it collects all of the resultant debris. Simply a matter of fitting the appropriate work reel, and letting the Bluebird fly through the job. The name may be picturesque, but the qualities are wholly practical and the unit is virtually unbreakable.



NEW  
COLLECTOR  
MODEL

See us on stand L3 - 10

PONTIACWORKS, FERNBANK ROAD, ASCOT, BERKS. TEL: 0344 885575.



## BOB ANDREWS PICK-UP MOWERS

A range of sturdy and versatile tractor drawn pick-up mowers that give high performance for a low outlay. Easy to operate, simply to manoeuvre and quick to unload, they mow and collect long or short grass with equal efficiency. They are ideal for scarifying mown areas and collecting rubbish, twigs, thatch and fallen leaves. With a Bob Andrews Pick-Up Mower on your team you have the power to make short work of time-consuming tasks.

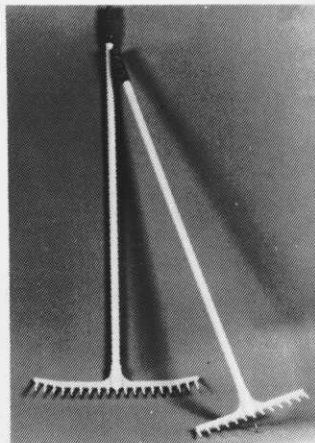
## AMAZONE TRACTOR-MOUNTED SPREADERS

These are the broadcast spreaders by which all others are judged . . . and found wanting! Over 800,000 sold so far, Amazone spreads all fertilizers and dry dressings accurately and speedily. 6cwt. per load . . . spreading width 4 - 33 ft.



## GOLFER'S RAKES

Light enough to use with one hand, yet almost indestructible, Bob Andrews' Golf Bunker Rakes have flexible shafts and heads, and an in-built durability. Every good bunker deserves one . . . two if its a big bunker . . . and the price is a pleasant surprise.



Write or phone for full details and name of your nearest stockist.

**BOB ANDREWS LTD**  
MORE POWER TO THE PROFESSIONALS

# the Golf Course

SEPTEMBER 1987

Front cover: David Crawley in action in Corfu

|   |             |
|---|-------------|
| FACE TO FACE with Peter Wilson              | 6           |
| IOG REVIEW                                  | 12          |
| RESEARCH UPDATE by Neil Baldwin of the STRI | 22          |
| BOOKS ON BOTANY by Eddie Park               | 24          |
| ABROAD ON THE GOLF COURSE - CORFU           | 28          |
| TREES PART 3 by Tony Gentil                 | 30          |
| NOTEBOOK                                    | 33          |
| APPOINTMENTS                                | 34,42,43,46 |
| BUYERS GUIDE                                | 47          |

**Publisher:** Fore Golf Publications Ltd  
**Managing Director:** Michael Coffey

All advertising matter, editorial copy and correspondence should be sent to: The Golf Course, 121-123 High Street, Dovercourt, Harwich, Essex. CO12 3AP Tel: 0255 507526

Subscription rates:  
UK - £18 USA - \$45 Continent - £30 Eire - IR£23

The Golf Course is published ten times a year.  
Printed in England by  
J.B.Offset, Marks Tey, Colchester, Essex.  
Copyright: Fore Golf Publications Ltd 1987

# BIGGA UPDATE

THE office base at the Sports Turf Research Institute in Bingley is now operational and all correspondence in connection with the Association's affairs should be forwarded to me there. The first few weeks have been an exceptionally busy period and priority has been given to processing the membership applications, whilst not neglecting to attend to other matters of urgent concern to the Association.

The membership response has been encouraging, with over 1500 membership applications already received. A number of members have requested membership cards and naturally these are of priority concern. However it is essential both for the Association and the magazine's purpose that an accurate membership list is compiled. It has become clear that the membership lists of the three merging Associations, on which circulation of the magazine is based, were substantially inaccurate in terms of members' correct address. It is therefore a considerable task to make the necessary amendments and of great importance that this is accomplished before membership cards are sent out - otherwise many members will not receive their cards. I would ask for patience therefore, but if any member is experiencing particular difficulties through the lack of a card, he should contact me personally and I will let him have a confirmatory letter to membership. Please ensure that all future changes of address are notified to me.

Members will be interested to know that the Board of Management has now established a sub-committee structure to process the Association's affairs. There will be three sub-committees:-

(1) **General Purposes.** This sub-committee will have a wide ambit and, as well as dealing with finance and staffing matters, will consider such matters as membership categories, subscription levels, uniform and Association logo.

(2) **Magazine.** This sub-committee is charged with planning the magazine's future development and the production of a high quality Journal.

(3) **Regions.** This sub-committee will be particularly important in the initial period of the Association. It will be responsible for establishing a strong, effective regional/branch structure and taking account of members' views. A map indicating the present situation is included in the magazine and the sub-committee will be reviewing the current position and making recommendations to the Board.

The magazine sub-committee has already met whilst the other two sub-committees are meeting in early September.

I am currently looking at benefits for members of the Association and you will find details elsewhere in the magazine of a Legal Advisory Service available to paid-up members as at 30th September and funded from the current year's subscriptions. This is the first step in the provision of a comprehensive benefits package which I will be working on in the next few months.

continued on page 26



**HORTICULTURAL  
EQUIPMENT LTD**

Chapel Works, Waldringfield, Woodbridge, Suffolk.

**FOR ALL YOUR RECONDITIONED  
MACHINERY REQUIREMENTS**

**PHONE  
ALAN CLARKE**

**ON**

**0473 - 36 - 791**

**A member of the CDC Group PLC**

**Spread the word!**  
 "Supaturf have launched a new range of fertilisers"

**NOW** a commercial spreader built to last

# EVEN-SPRED SPREADERS

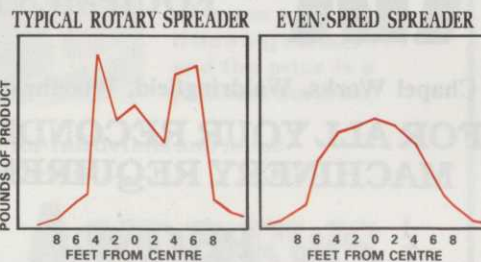
- Permanently lubricated 5" gears are enclosed to seal out damaging dirt and grit that leads to premature gear wear-out and failure
- Self-cleaning design with stainless steel agitator
- Stainless steel axle mounted in 4 large serviceable ball bearings
- Rustproof hoppers resist cracking and deformation
- Heavy duty 1" tubular frame in Stainless steel/Aluminium
- Positive locking on/off flow control handle
- Swath width of 7 to 13 feet, depending upon product density
- Durable 11" non-marking pneumatic tyres

**5 year RUST PROOF GUARANTEE**

The **EVEN · SPRED** built by professionals for professionals • Designed to withstand the rigours of tough commercial turf care applications using the most modern materials and up to the minute technology • **EVEN · SPRED's** broadcast system is totally self cleaning and rustproof to ensure years of dependable service • **EVEN · SPRED's** huge 5" enclosed gears seal out damaging dirt and grit to help eliminate premature gear wear • All **EVEN · SPRED** models are manufactured with rust-proof heavy duty tubular frames and large capacity hoppers. The **EVEN · SPRED** is light and perfectly balanced to give a smooth efficient operation and a perfect feathered edge for even broadcast every time.

***Performance unmatched by the competition***

Compare the spread pattern of a typical rotary spreader to the spread pattern of the new Supaturf **EVEN · SPRED** spreader. Note the smoothly feathered edges of the **EVEN · SPRED** broadcast pattern, which helps to minimize streaking and eliminates 'burning' from overlap.



For any further information contact one of the following branches.

# Supaturf

Head Office Oxney Road, Peterborough Cambridgeshire PE1 5YZ Tel: (0733) 68384

Branches


**North**  
 Unit 2  
 Ripley Close  
 Normanton  
 Wakefield  
 West Yorkshire  
 WF6 1TB  
 Tel: (0924) 891000

**South**  
 Dromenagh Farm  
 Seven Hills Road  
 Iver Heath  
 Buckinghamshire  
 Tel: (0895) 832626/834198

**South West**  
 D.O. Hunt Limited  
 14 Fairfax Road  
 Heathfield  
 Newton Abbot  
 Devon  
 TQ12 6UD  
 Tel: (0626) 834499

**Midland & South Wales**  
 Unit 104B  
 Hartlebury Trading Estate  
 Kidderminster  
 Worcestershire  
 Tel: (0299) 250087

# JACOBSEN®



*Full details of the  
range from the  
company's UK  
division at Unit 12,  
N. Lynn Industrial  
Estate, Bergen  
Way, King's Lynn,  
Norfolk PE30 2JG.  
Tel: 0553 763333.*

**Greens King Team...The Best in the Business**

ONE hot day in July, I travelled up to Bingley to see Peter Wilson, who has been elected to the position of Chairman of the Board of Management of the STRI.

Changes have been coming thick and fast at Bingley since Dr Peter Hayes took over almost five years ago as Director. With an hour to spare before my appointment, I took the opportunity to walk round the entire establishment and note the changes.

The most striking feature is the new building which has a certain modern charm about it. Thinking back to the cramped and dusty premises which were rented for over fifty years in the main building of the St Ives estate, there can be no nostalgic feelings of regret for the old days. Instead there is the quiet hum of computers, spacious laboratories and even a pleasant library with a handy collection of books and periodicals from across the world.

Outside, in the blistering heat, at first sight the trial plots still have the distinctive pattern of replicated experiments which would have been familiar to Norman Hackett, ten years before his Bingley brainchild could be brought into being.

Today's actual experiments, however, seem to be changing with increasing rapidity. Just time to feel a moment's regret at the sight of the museum of grass species and weeds near the entrance being moved to another location after so many years, and then the realisation that workable space here is at a premium.

Next, a walk down to the newest terrace at the lower end of the plots, where two young men in shorts were carrying out controlled fertiliser experiments on the sand based plots which form part of the work being financed by the R & A.

Two thoughts flitted through my mind - firstly, that it isn't just policeman who look younger - so do some agronomists and research scientists! Secondly, and not with any great surprise, that a pure sand green sown to a mixture of fescue

and bent begins to look remarkably like a traditional British seaside links. The inherent difficulties in managing a pure sand green are being faced and analysed and it seems likely that increases in nitrogen may be causing increasing dominance of the bents. I don't think we really knew that before!

My hour had passed and I must hurry back for my talk with Peter Wilson, a member of the delightful Formby club near Southport and still a very useful golfer, though getting little practice these days. To use his own words: *"My game is so variable I can take as many as 55 strokes for the first nine and return in as few as 35"*.

He is a man with a legal training (and it shows) and many years in practice as a solicitor, but also some years of rearing beef cattle and an interest in the French grassland ecologist Andre Voisin. Voisin wrote a number of books in the Fifties and Sixties which were published worldwide and was a pioneer in raising interest in grasses.

# FACE TO FACE

**Eddie Park  
talks to  
Peter Wilson,  
Chairman  
of the Sports Turf  
Research Institute**



The trial grounds at Bingley, showing in the foreground, museum plots used for grass and weed identification.

Peter Wilson's commitment and enthusiasm for the administrative side of the golf game is impressive and is targetted at what he believes are the main concerns of the club golfer - the golf course and the handicapping system. Would that all golf administrators shared his priorities! We had no time to discuss handicapping, but it is of interest that he is a member of the USGA handicap research team.

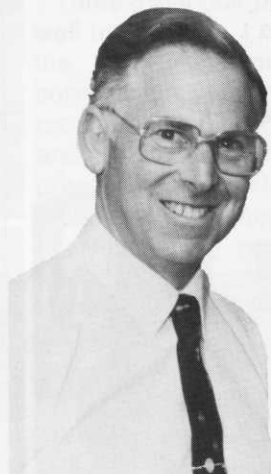
On the greenkeeping side he was originally proposed by Frank Fawcett, now a Vice-President of the STRI, to serve on the Greenkeepers' training committee which was going through a difficult period some years ago, and he is in his second spell as chairman. Meanwhile he had been nominated to the STRI Board to represent the EGU and became Vice-Chairman. His name came especially to the notice of greenkeepers when he chaired the steering committee set up to try to form a joint Association and he is a trustee of BIGGA. Just for good measure he is a member of the greenkeeping panel set up by the R & A.

So it is a man with a formidable appetite for committee work who now chairs the Board of Management at Bingley. He is quick to pay tribute to his predecessor John Tanner for the progress we are now seeing. Mr Tanner held office for ten years and without his judgement and ability to mobilise financial aid from the world of football, it is doubtful if the STRI would have survived.

As Peter Wilson points out, the increasing emphasis on golf turf actually has valuable spin-offs benefits for other sports as golf consistently demands only the highest quality turf.

In the course of a discussion on financing, I learned some interesting facts. As opposed to some other research institutes, the STRI has to earn practically every penny it spends. No government handouts to maintain the infrastructure.

There is some government cash channelled through the Sports



**"The first thing is to let the greenkeepers see that they can trust our advisers..."**

**PETER WILSON**

Council (£71,500, which equates to 13% of turnover) the greater part of which is likely to continue because it represents payments for services rendered - for instance vetting grant applications, education, etc. Research work there actually saves money for the Government purse, for example by undertaking research into new varieties of grass which require less cutting, and also research into low maintenance inputs for Local Authority grass maintenance.

Total annual turnover is now about £600,000, a figure which has almost doubled over the past five years. Apart from a small number of ex-gratia donations, this is all earned in one of two forms, either as payment for advisory services or as funding for research contracts.

I soon discovered that Peter Wilson shared my belief that the potential market for golf advisory services may turn out to be much larger than has been hitherto to apparent. How then could that potential be realised?

*"The first thing is to let the greenkeepers see that they can trust our advisers and then I hope that they, and not always the clubs, will be keen to take the initiative in calling for advice in the early stages of a problem."*

Following this, a desire that members of a unified Greenkeepers' Association will get into the habit, around the country, of meeting in small local groups to share their expertise and discuss their problems and jointly realise

the benefits of professional advice.

Another positive though was that more instruction might be aimed at the head greenkeepers in particular, *"...as that will influence larger numbers more quickly"*. Not with standing *"It must be right that 90% of greenkeeper training should continue to take place in the workplace"*.

We found ourselves in complete agreement that many greenkeepers were living in a "pressure-cooker" atmosphere because of the problems of interference with sensible long-term plans by members and club committees. The Board would take a sympathetic look at the need, not just to give agronomic advice to clubs, but to take a hand in the task of persuading them to implement it in full. Help from the golf unions in the education of golfers in general would be advantageous. Said

*Continued on page 9*

# FACE TO FACE

**the Golf  
Course**



If you're looking for the best value it can only be **TORO** ... we may not be the lowest price but in the long run **TORO** are by far the finest economical and efficient **TURF MANAGEMENT EQUIPMENT**.

To prove the point why not have a demonstration working under your own conditions ... you'll soon see what we mean particularly if you have other equipment to compare.



# Quality Performance Reliability

most manufacturers say it  
**we mean it!**



Please send details as ticked box/s

Literature  Nearest Dealer   
 Trial/Demo

Name .....

Address .....

.....

.....

Telephone .....

WINDSOR SHOW  
 Stands F 1-6 and 25-31  
 ...and there's sure to be  
 something NEW!

G/9/87

Continued from page 7

Peter, "The Board accepts and is investigating the possibilities of increasing business by offering improved advisory services". But there have been substantial improvements already, such as the much more "personalised" reports to each club (indeed a far cry from the old brief and rather generalised reports) and also by the formation of a specialised 'golf unit' with four or five agronomists dealing only with golf courses.

The STRI recognises that fuller initial surveys, plus management plans, plus follow-up visits, should be available for those who need them. A last word on golf advisory work - it has risen by 23% this year and construction consultancy work by no less than 50% ( This latter category includes the recent announcement that the STRI will act as the main consultants for the new South Course at Wentworth).

The positive goodwill shown by Jim Arthur in suggesting to many of his former client clubs that they now use the STRI is acknowledged, and there is satisfaction that the institute is now the joint agronomist to the R & A with responsibility for the qualifying courses for the Open Championship.

So, to the research side of things, which represents 30% of turnover, and first a bleak statement that golf has had little or no research done in the past, simply because it hasn't paid for any. In the context of a research establishment setting out to fulfil contracts that really does mean "nowt for nowt". It is clear that the initial decision by the R & A to use some of it's profits from the Open to finance golf course research has been a great step forward.

There is now enthusiasm for golf and increasingly the Annual Journal reflects that in it's content. Incidentally this year's edition has been totally edited by STRI staff (led by Mike Canaway, the senior research officer) to the point that only a small computer disc had to be sent to the printers - a feat of which the Chairman is justly proud.

Three initial golf projects are now well under way. I have mentioned the large experiment on the construction, maintenance and requirements of pure sand greens, and they are already showing practical results. Neil Baldwin, the pathologist, is deeply involved in the Fairy Ring problem and has added to his brief the question of Dry Patch. (see pages 22/23).

The thing about that project that will appeal to many people is the fact that much of the work is being done on the fairways and greens at golf clubs in nearby Yorkshire and Lancashire. In the Thirties, Bingley maintained what they termed "outstations" at a number of clubs, such as Muirfield and Western Gales, where they could rely on the head greenkeeper to oversee experiments on normally managed courses. A return to that tradition will do much to reassure those who doubt if all the academic experiments on a Yorkshire hillside will produce results that will assist the practical man.

The most dramatic studies are those by Steve Haake on ball impact on golf green turf under the joint supervision of Dr Alastair Cochrane of Aston University, who supplies much of the expertise for the balls and implements committee of the R & A. This basic research has also been assisted by a contribution towards equipment from Acushnet. Steve is already visiting clubs with his fascinating battery devices, developed for firing golf balls on to turf with known velocity and backspin and recording the impacts using stroboscope photography. A computer model of the process of impact has also been developed.

There are tremendous implications in this research for greenkeeping. Are we right to go to the enormous expense that would be required if receptive greens at all times are demanded? And can they be viable in the long term?

The R & A now has machinery to ensure that funds generated by the Open Championship are wisely

# FACE TO FACE

spent for the benefit of the fame of golf. A number of papers have been submitted by the STRI, detailing a strategy for possible research and some projects dealing especially with irrigation, ecological surveys and the specific requirements of bents and fescues. These are at present being considered, but there is every indication that golfing research, so long neglected, is now viewed with enthusiasm by the authorities.

The advantages of having a research capability under the same roof as an advisory service are now more obvious than ever. There are so many current problems on golf courses to which the honest answer has to be that we do not really understand what is happening. For too long American research and methods were followed and have proved to be inappropriate in our climate.

Peter Wilson, as Chairman of the Board of Management of the STRI was keen to promote all these present achievements of the staff and to involve us all in their future. He comes over as a man with a lawyer's habit of precision and of insisting on hearing both sides of the case, probably no bad thing in a job with such responsibilities.

We must all wish both he and the Institute well; nobody, least of all myself, would pretend that the task facing them is an easy one. It will require a great deal of imagination and creativity to produce the advice and research that is so badly needed.



# are you concerned with root development

Slow hard growth, a thick sward, drought resistance, soil conditioning, grass seed germination, tree planting, fine turf, land reclamation, indoor landscaping, a balanced management system, destructured soils, deep green colour, improving your soil ...

... then Farmura Environmental Products can help your management programme.



Ask for details of the Farmura range of products or write for colour brochure to:  
Farmura Environmental Products, Stone Hill, Egerton, Ashford, Kent. TN27 9DU.  
Tel: Egerton (023376) 241

# farmura

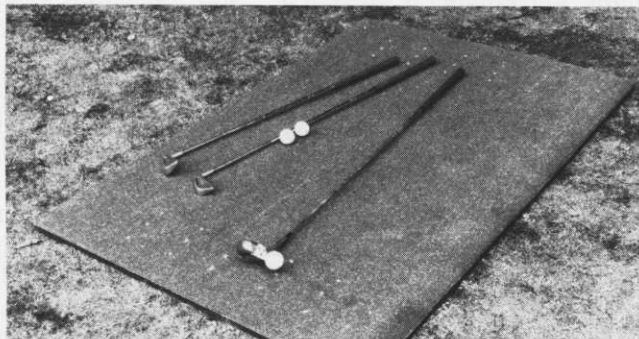
## ENVIRONMENTAL PRODUCTS

Caring for the  
environment  
naturally!

# CARPETITION LTD.

THE 'TUFTURF' TEE MAT —  
Like a piece of firm, well sprung fairway

FOR TEE SHOTS



AND FAIRWAY SHOTS



"A British made porous hardwearing all weather tee 1.5m x 1m and 2m x 1m. Synthetic grass, bonded to reconstituted rubber underlay shock pad with 60 tee inserts, combine to give a superb playing surface. Its use is highly beneficial as a WINTER TEE, or when re-turfing tees in the playing season. Also ideal for DRIVING RANGES and PRACTICE GROUNDS both indoor and outdoor."  
Further details from:-

CARPETITION LTD.,  
6 KAFFIR ROAD, EDGERTON,  
HUDDERSFIELD HD2 2AN.  
Tel: 0484-28777