

OUT AND ABOUT

Welcome news from Rhône-Poulenc

Rhône-Poulenc Environmental Products has re-introduced the popular fungicide Quintozene and announced big price reductions on Spasor - their glyphosate based total herbicide.

Quintozene, a contact fungicide previously marketed under the Bras-Sicol, was originally withdrawn due to problems of supply of the active ingredient. Happily, due to the demand for an alternative fungicide from greenkeepers throughout the UK, Rhône-Poulenc is now able to announce its re-introduction.

Sold in new 5kg plastic packs, Quintozene wettable powder will give reliable control of Fusarium Patch, Red Thread and Dollar Spot and provides a further valuable product for use in the fight against turf disease.

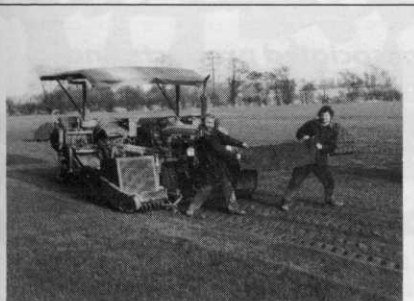
Spasor - Rhône-Poulenc's specialist non-residual herbicide has its price reduced. Containing 36 per cent Glyphosate, Spasor is a foliar-applied translocated herbicide for the total control of annual and perennial weeds, both broad-leaved and grass.

Packed in 1 litre easy measure and 5 litre Tip 'n Pour containers, Spasor now offers an even more economical way to effectively control a wide variety of weeds including aquatic species.

From seed to harvest in 18 weeks

One can hardly accuse David Davies of West Midland Turf of allowing the grass to grow beneath his feet! This is partly because he incorporates a synthetic netting into his newly established seedlings to improve the handling qualities of the young turf.

This new A22 mixture comprises the shortest growing Perennial Ryegrass and Slender Creeping Red Fescue available



A22 turf seeds from BSH gives a strong root system.

on the UK seed market. Lorina Perennial Ryegrass and Logro Slender Creeping Red Fescue, mixed 60% and 35% respectively, plus 5% Highland Browntop Bent, from BSH Ltd.

"The main priorities are quick establishment, a good fibrous root system and a presentable, even textured turf with dark green colour.

The turf must be capable of withstanding the every day use received in public amenity areas and domestic lawns" said Mr Davies.

"We have found that turf grown from the A22 Low Maintenance seeds mixture requires approximately one-third less mowing throughout the growing season in comparison with other dwarf Ryegrass crops. This saves considerable time and money for our company".

"The advantages of the mixture, sown in late June 88, are strong visual colour, a compact, fine-leaved appearance and underneath, an excellent root system. In fact, such is the attractive appearance of the A22 sward, it resembles a fine fescue mixture. Despite the fine leaf, it seems to offer good wear tolerance, having the distinct genetic ability to produce adequate, but very compact leaf growth".

Mulch to insure against drought

After the warmest winter for more than 100 years a dry summer could spell disaster for newly planted shrubs and trees.

One of the more economical options among the many that industry suppliers



will be eager to promote is an early surface mulch to increase and retain moisture content, stabilize ground temperatures, and lengthen the growing season.

"If we get a dry summer, then a surface mulch could turn out to be the cheapest insurance landscapers have ever had", commented Melcourt Industries MD,

John Latter, whose company recently launched Forest Biomulch, a dendromulch now being actively promoted for this purpose for large scale plantings.

"Many of our customers are planning ahead and laying mulches on both new and established sites in an effort to minimize the danger of drought stress and subsequent plant losses", continued Mr Latter, "with the added bonus that with this insurance, one year's premium provides several years of protection".

A wholly organic mix of pine chips, chipped branches, bark, needles, leaves and twigs (see picture), Forest Biomulch is first processed through a mulcher and then matured to eliminate pathogens and toxins. The product's particle sizes range from 1 to 45 m in length, allowing rain water to drain freely yet limiting evaporation because of the protective layer which is formed between the soil and the atmosphere.

With time, the high percentage of organic debris will breakdown into the soil, creating ideal conditions for earthworm activity - and thus improving root aeration and drainage still further.

Since the winter has proved even drier than that of 1975/6, a hot summer really would present serious problems for the professional landscaper. To date, the South of England has been hardest hit, where rainfall levels in counties like Kent and Hampshire were running at less than half the normal rate for the season.

Wetting agent for turf

A major break-through in turf wetting is claimed by the manufacturers of a new product to be launched next month for fine turf management.

Known as Turfex, the new product was tested independently by the Sports Turf Research Institute during 1988 for the alleviation of dry patch. In laboratory tests it increased the rate of infiltration into dry patch affected turf by up to five times that of other wetting agents.

Excellent results were also shown in a field trial at a golf course in the north of England with a severe dry patch problem. The rate of water uptake was almost doubled following repeated applications of Turfex. In the same trial, results with Turfex were way ahead of those with other wetting agents.

Turfex is expected to be particularly effective in fine turf management on golf courses, bowling greens etc. since it provides a cost-effective solution to the problem of dry patch, by enabling water to