

OUT AND ABOUT

TWO NEW RYAN ROLLERS FROM VICTA

Victa (UK) Ltd distributors for the Ryan range of turf care equipment, are to market two new rollers.

Over 20 years of experience has gone into the design and development of the Ryan Rollaire and the Riding Rollaire. Fine turf protection and elimination of ridges have been the main concept behind the rounded design of the new water filled drums. Power is provided by a 5hp Honda engine coupled to hydrostatic drive system.

The unique steering system and clutchless transmission of the 24" Riding Rollaire make the machine extremely manoeuvrable with the minimum amount of operator fatigue. Roller weight is 495 lbs (224 kg) empty, and 1,107 lbs (502 kg) loaded.

The 30" pedestrian operated machine priced at £2,700 plus VAT. Empty roller weight is 425 lbs (193 kg), and 840 lbs (381 kgs) loaded.

Both machines are ideal for freshly seeded areas and newly laid turf.



MODUS 'T' - EXPAND PRODUCT RANGE

In the past three years Modus 'T' have introduced no less than 18 different products. These include the 'attachments' such as Spikers, Scarifiers, Skip Buckets, Corers, Brushes, Rollers, Combi-Tools, all of which fit in the 'one mainframe assembly'.

With the additional ability to apply an infinitely controlled hydraulic pressure, this system offers the ultimate in cost saving, and versatility.

Sweepers, Top Dressers, Level Conditioners, Mole Ploughs, Shredders, Corers: all are available as individual mounted units and plans are now well advanced for a move to NEW premises.

Another, all British designed product is planned to come onto the market this year, a MAJOR new addition to a very extensive range.

TURFOIL DRIFTPROOF SPRAY APPLICATORS

A Canadian company have developed a drift proof spray applicator which makes chemical application safer and more manageable.

The TURFOIL, which is based on the patented WINDFOIL technology, gives three main advantages.

Firstly, wind and drift are no longer a problem - this allows you to apply chemical when you plan to and when it is most effective.

Secondly, because drift is controlled, spray application is safer - chemical goes and stays where you want it and does not get on the operator or adjacent areas.

Thirdly, more efficient application allows you to use less water and in some cases less chemical this reduces costs and environmental concerns.

The TURFOIL is available in 30", 48" and 60" widths.

Innovative Equipment Inc., 240 - 103rd Street, Saskatoon, Saskatchewan, Canada S7N 1X7, Telephone (306) 477-2000 Fax (306) 477-1913.



ULTRA SAFE CHEMICAL LOCK-UPS

With the 1986 Control of Pesticides Regulations now being enforced by the Health & Safety Executive, Ultra Fabrications Limited, of Huddersfield, have introduced UltraSafe, a range of chemical stores based on their already successful steel security units.

Ultra offer a wide choice of sizes within three main design types, Chem-Vault, Chem-Chest and the Mini Chem-Chest. All are made of 2.5mm fully welded steel plate finished in a synthetic enamel in any B.S. colour. Security is inherent in their pedigree but additional features have been added to each model to ensure maximum safety and compliance with the regulations.

The walk-in Chem-Vault has 10" sills at the base of the doorway to form a tank capable of containing even a major spillage. Two rows of lipped heavy duty steel shelves are fitted to the walls and supported also at the front. Electric lights and a thermostatically controlled heater are protected by PVC conduits and an E.L.C.B. Internal ventilation is provided by high and low level, vermin and weather proof vents. The heavy, Chubb-locked doors can be opened a full 270 degrees and held open by chains. Chem-Vaults are 6' wide by 7' high with four standard lengths from 8 to 16' but larger 8' wide units are available up to 24' long. Even the

smallest has a tank capacity of 250 gallons.

More suitable for the groundsman with less storage need, the Chem-Chests are 4' high, 2' deep and 3, 4 or 5' wide. The padlocked lid lifts on gas struts revealing two shelves and ample space in the base which is seam welded to form a containment tank. High level vents ensure good air circulation. The Mini Chem-Chest has the same base dimensions but is only 2' high and opens like a chest freezer. Both are raised on skids to facilitate access for a fork lift truck.

All Ultra products are available through a network of agents in the UK including Northern Ireland. For further information on products and agents contact.

Brian Wallis, Managing Director, Ultra Fabrication Ltd., Uttley House Prospect Street, HUDDERSFIELD, HD1 2NU Telephone (0484) 540236



OUT AND ABOUT

MASSIVE NEW INVESTMENT IN GRASS SEED CLEANING AT JOHNSONS

A massive new grass seed cleaning plant, the only one of its type in the country, has been installed by Johnsons Seeds at their Boston headquarters.

Costing over £150,000, the new plant was designed, supplied and installed by a Danish manufacturer primarily for cleaning fescue seed but is equally capable of handling any other variety of grass seed.

Uncleaned seed is taken straight from bulk bins or sacks by a belt feed intake on the ground floor and conveyed to the top floor into a bulk holding bin. From there it passes into the pre-cleaner and on into a large screen cleaner and indented cylinders, with a special brushing machine incorporated in the flow line.

The seed then passes into the 'cleaned seed' hopper where it undergoes automatic sampling. Finally the seed moves in to the 'weighing off' machine and is then bagged, labelled and stitched as it passes along the slatted conveyor to be palletised.

Michael Goodliffe, Johnsons production director, said "The new plant is several times more efficient than previous equipment and has a greater capacity. This one will break down the 'doubles' and re-clean the 'overs.'"

NEW NATIONAL 84" PTO GANG MOWER FROM ALLEN

Built for users of compact tractors is the new National PTO driven triple mower: by Allen Power Equipment.

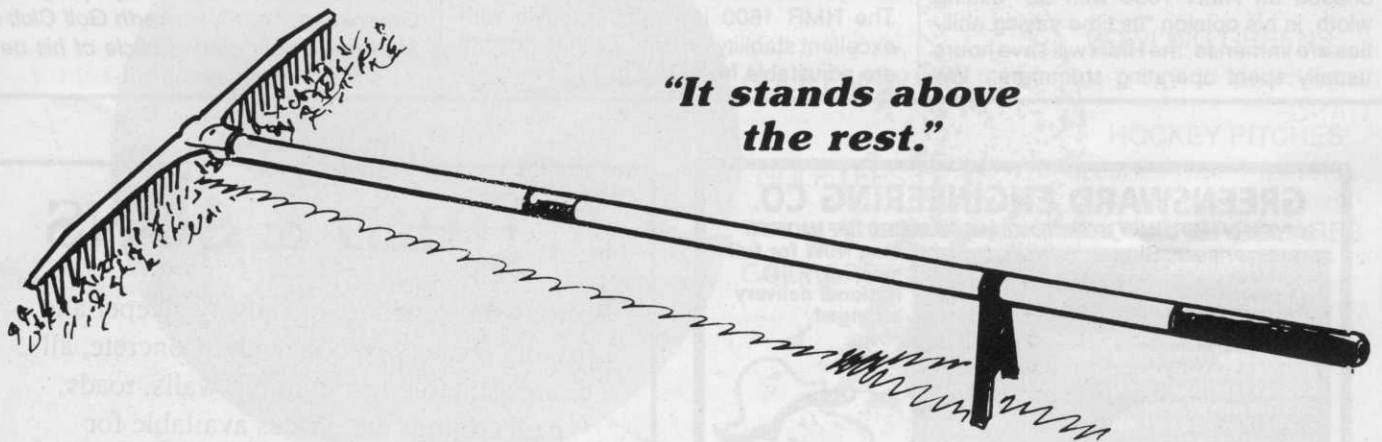
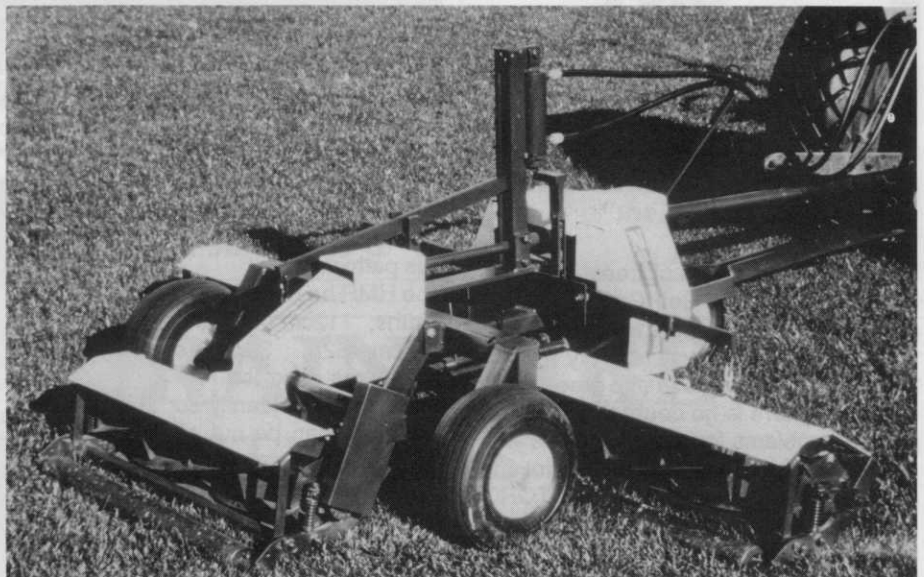
All that is needed is a minimum 15 PTO hp tractor unit hooked up to this high performance cutter and you are ready to mow an 84" swath at a rate of up to 3 acres per hour.

Equipped with a high efficiency drive system, heavy-duty right angle gear boxes and final belt drive engage/disengage the mowers via the PTO clutch.

Because the cylinders are belt driven there are no wheels to lock and scuff the turf, if a foreign object becomes jammed in the reel. With no outrigger wheels, cutting units reach out over kerbs and sand traps to minimise additional trimming.

This new addition to the Allen range has hydraulic raising and lowering of cylinders, six bladed 8" diameter cylinders running on adjustable Timken bearings and joins the highly successful National 68" and 84" triple mowers already established in the U.K. market place.

The price of the Allen National PTO Gang Mower is £3995.00 + VAT.



"It stands above the rest."

Make your course more attractive with the new "Players" Bunker Rake from TACIT. A bracket attached to the vandal proof shaft keeps the handle above the wet sand or grass. Selected for use at St. Pierre and The Belfry.

"TACIT"
MANUFACTURERS
RUGBY, ENGLAND
TEL: (0788) 832166

OUT AND ABOUT

ROYAL DUTIES FOR A HUXLEY THREESOME

The Royal Parks Division of the Department of the Environment has bought three items of professional turf equipment from Huxleys Grass Machinery to help look after formal grass areas within the Royal Parks and gardens.

The Huxley 358 Greensmower, has been supplied to maintain Royal Lawns' together with a three wheel Cushman Turf Truckster vehicle fitted with a tipping Long Box with detachable sides and tailgate.

Supplied and equipped with a rear-mounted Huxley H44 Fine Turf Scarifier, the combination is used for regular aeration of Lawns, removing thatch and other material to encourage healthy grass growth



Edward Huxley (left) with area sales manager, Ron Rose, checking the new machines prior to delivery to London's Royal Parks.

ROUGH CUT ROTARY SAVES STRIMMING TIME

Trees, trees hundreds of trees! Just the thing to enhance a Golf Course. Many golfers would argue there is no finer sight than a tree lined fairway, all very well for the player but what about the greenkeeping staff. There is no doubt that trees do present problems for greens staff as well as the occasional wayward drive. Not any more though, the new HMR from TORO has the ability to leave uncut circles as small as 8" diameter.

Don Major, Head Greenkeeper of Bletchworth Park Private Golf Club has purchased an HMR 1600 with 52" cutting width, in his opinion "Its time saving abilities are immense, the HMR will save hours usually spent operating strimmers. We

can use the machine around 200 or so trees on our course and on numerous pathways."

The HMR has two cutting widths; 112cm (44") and 132cm (52:). Separate gearboxes drive the rear wheels independently so that drive can be cut off from the inside rear wheel when turning sharply. This prevents scuffing or marking the turf and because speed is automatically reduced on sharp corners the operator can cut to edges more easily. The HMR 1600 is highly versatile with excellent stability on hills. Cutting heights are adjustable from 37.5 to 112.5mm.



Picture above shows Don Major (left) Head Greenkeeper of Bletchworth Golf Club is shown the tight cutting circle of his new Toro HMR 1600.

GREENSWARD ENGINEERING CO.

SUPPLIERS OF HIGH QUALITY RECONDITIONED AND GUARANTEED TURF MACHINERY

MASSEY FERGUSON 20E tractor Q cab very clean	£3,950
LLOYDS Leda gang mowers	£1,850
RANSOMES Motor Triple	£2,950
RANSOMES 3 sportscutter trailed gang mowers	£1,850
RANSOMES 3 Magna trailed gang mowers	£1,850
RANSOMES 3 Hydraulic gang mowers	£2,250
RANSOMES 180 70chrs. c/w lift kit	£2,795
SISIS Contravator pto seeder	£1,850
KUBOTA L225 c/w cab & turf tyres	£2,450
B8200 4wd 1125 hrs	£3,950
BRANTLEY back hoe for compact tractor	£950
BUCHER flail mower for steep banks	£1,495
TORO GM 300 greens triple new engine	£5,950

Ring NOW for full machinery list. National delivery arranged.



LEEDS (0532) 751627
Harold Terrace, Headingley,
Leeds LS6 1PG

F. HIRD & SONS

Nationwide suppliers of railway sleeper and crossing timbers. Wooden and Concrete, all grades suitable for retaining walls, roads, path edgings etc. Prices available for delivery or collection from all areas.

For further information phone

BARBARA
Doncaster (0302) 831339

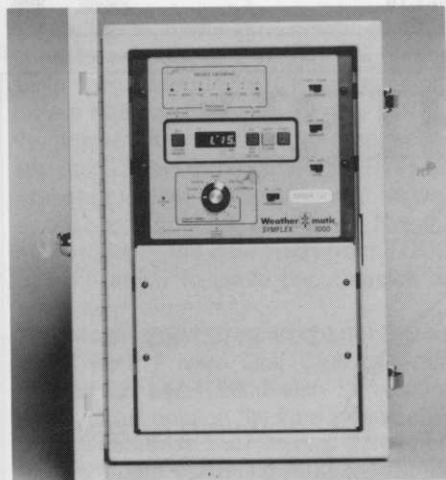
OUT AND ABOUT

WEATHER MATIC LAUNCH NEW WATER CONTROL SYSTEM

Weather-matic has introduced an affordable and versatile irrigation water management system designed specifically for golf courses.

The new Command Satellite system features MK12C Command units and MK12S Satellite units. The communications link requires only 24 V.A.C. with 2 wires common from each Command to all associated Satellites.

The Symflex System also features a pump interrupter circuit which provides remote sensing of mainline pressure and flow to assist in pump protection; a system shut-down alert circuit to prevent pressure surge damage caused by rapid valve closure; and a remote sensor circuit to monitor special water management conditions such as wind, rain, soil moisture and temperature.



KUBOTA ENGINE FOR MALLARD TRUCK

A new Kubota air-cooled diesel engine has been chosen to power a new British built all-terrain light truck.

The engine has a remarkably low fuel consumption, using some 40 per cent less per hour than an air-cooled petrol engine of the same power, and is much quieter. Until now all Mallard designs have had front-mounted engines located between the seats for the driver and his mate, but truck designer David Brown was searching for an engine which would be compact enough to fit under the load body of his new Mallard Mark V so as to give less noise for crew and bystanders alike.

David Brown said, "Our Mallard Trucks are produced as true multi-purpose vehicles and can have 3 point hydraulic linkages fitted at front and rear to carry a wide range of equipment - so the engine has to be able to drive an hydraulic services pump as well as deliver sufficient power to the rear wheels. The OC 60 does this comfortably, it just 'sets its teeth' into the load and keeps going".

GOLF COURSE EUROPE 1989:

On 4, 5 and 6 October 1989 a new trade exhibition will take place in the Rhein/Main Halls in Wiesbaden, West Germany: Golf Course Europe '89, also known as G.C.E. Golf Course Europe is the only European Exhibition and conference to specialise on the viability research, the design, construction and maintenance of golf courses and on golf club management.

GCE will be the central marketplace for anyone involved in the rapidly expanding market of golf courses in Europe. In the next decade between a 1000 and 2000 new golf courses will be added to the existing 4,500, while the number of golfers is expected to triple.

Because of the mid 70's recession many golf projects ran into serious financial difficulties. The main causes of failure were mismanagement and inadequate research into a project's economic viability.

The range of expertise required in a large golf estate project is formidable. Many disciplines are involved in building a golf course. This is why at the GCE '89 conference a large number of topics will be addressed by more than 25 speakers from various countries.

The exhibition will be visited by exhibitors from all over the world. There will be between a 100 - 150 exhibitors, mainly from Europe and the USA. They will exhibit all products and services needed to plan, design, construct and maintain a golf course. The visitors of GCE '89 will find the latest developments in irrigation techniques, drainage systems turf care, mowers, equipment and many other products. The exhibition is only for visitors who professionally deal with golf courses.

TERRA-TIRES

As sole UK distributor for Goodyear Terra-Tires, Undergear carry the complete range of sizes and types, including built-up tyre and wheel units for LGP conversions.

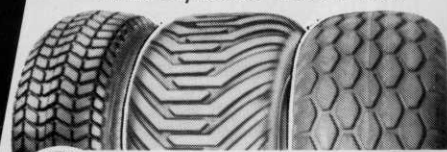
SEE YOU AT THE I.O.G. SHOW ON STAND I 19 & 20

Telephone: 021-553 1606
Telex: 336584 Fax: 021-553 1307

**THE ONLY BIG
IMPRESSION WE
WANT TO MAKE
IS ON YOU!**

GOLF TYRES

Exclusive golf-pattern tyres available to fit any tractor front or rear.

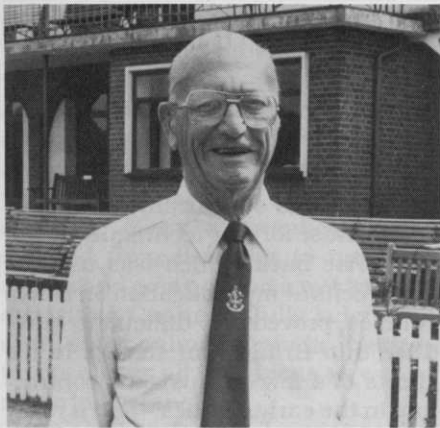


UNDERGEAR UNDERGEAR

BLACK LAKE WORKS, WEST BROMWICH, WEST MIDLANDS B70 0PD.

OBITUARY

MR WILLIAM H, BOWLES, BEM, FOUNDER AND PRESIDENT OF THE INSTITUTE OF GROUNDSMANSHIP



William 'Bill' Bowles, Founder and President of the Institute of Groundsmanship, died at Wexham Park Hospital, Slough, after a short illness, on Wednesday, 19th July 1989, at the age of 89.

Bill Bowles founded the National Association of Groundsmen in 1934 whilst working as Head Groundsman to Westminster Bank in Norbury. In 1916 Bill moved to Eton College on his appointment as Head Groundsman and retired in 1985, after having served 72 years as a turf care expert of great repute. In 1947 Bill was invited to serve on the National Playing Fields Association's prestigious Ground and Layout Committee. He has given talks and practical demonstrations at the request of the MCC, with the aim of improving the standard of wickets generally and in all his working life never declared a pitch out-of-play due to inclement weather. An acknowledged expert in turf culture, Bill's expertise is known throughout the world and is best summed up in an extract from an article in the Eton College Chronicle, printed when Bill retired in 1985 aged 85 "Despite his eminence in the profession, he always put Eton first - no man in the history of Eton College can have given longer or more devoted service than Bill Bowles. We may be sure that if he ever dies... that W. G. Grace himself will at once appoint him Head Groundsman of the Elysian Fields."

This sentiment is carried through in the work Bill has tirelessly carried out for the Institute of Groundsmanship. His aims to bring groundsmen together, give opportunities for training, hold examinations and courses, raise standards of sportsground

**FIRST GOLF COURSE FOR POLAND
(A Golf Course - Exclusive)**

An 18 hole golf course with a driving range is to be built in the grounds of luxury hotel, converted from an Old Bishop's Castle at Pultask, a medieval town some 60km north east of Warsaw.

The project has reached the design stage to plans drawn up by the Swedish architect, Jan Sederholm who has been responsible for a number of golf courses in Scandanavia.

It is understood that the finance is to be provided by a group from Sweden with Polish connections backed by a Polish Government Agency, to cultivate links with those of Polish origins, but living abroad. The hotel with a recreational complex opened last month, the course will follow, constructed by a local civil engineering firm under the management of Richard Gacke, a Pole who has worked in Nigeria for 15 years, where he acquired his golfing interest as a member of the Ikoyi Club in Lagos.

Richard confesses to be a "lousy" golfer, but says that he is keen and does at least know something about the game!

Once the course is finished, there is an

option to build a further 9 holes.

It seems there is an immediate demand for at least 20 golf courses in Poland just to cater for the tourists who take their clubs to West Berlin and Vienna and then move on into Poland to continue their holiday. That takes no account of the local population, who are at present unable to take up the game.

Estimates point to over 40,000 people waiting to join a club in Stockholm, many quite prepared to join the new club at Pultusk and fly in to stay at the hotel.

In fact the Swedish partner has already reserved a number of membership cards and when ready, the course will also be available to hotel guests.

Once constructed, Richard Gacke will take over as Course Manager and will then be faced with the task of training a greenkeeping crew. Purchasing the right equipment for course maintenance is likely to be a major problem as there is nothing of suitable manufacture in Poland.

However as one of the current subscribers to 'the Golf Course', he is sure to pick up a great deal of the information he requires.

maintenance and to improve the status of groundsmen and the profession have all been achieved and the Institute will carry on his good work. The sell-out of this year's annual IOG Sports & Leisure World Trade Exhibition to be held at Windsor Racecourse in September with 450 exhibitors is fitting tribute to his memory.

Bill Bowles was an extremely popular, highly respected and much loved figure. His contribution at local, regional, national and international level, his vast experience and wonderful personality will be sadly missed by the entire turf care and leisure industry.

Deepest sympathy and condolences are conveyed to all of Bill's family.

4 WHEEL DRIVE FOR JACOBSEN FAIRWAY MOWER

The Jacobsen LF-100 5 gang fairway mower is now available with four wheel drive. This option allows the LF-100 to climb hills without damage to the turf caused by wheel spin and slippage.

At the touch of a knob, the operator can go from two wheel drive to four wheel drive and back, without stopping.

The 100-inch cut and mowing speeds of more than five mph mean high productivity. The up-front placement of the outside reels allows the operator to see the trimming edge without looking behind, for a cleaner mowing line.

The LF-100's five 22-inch reels deliver a tournament-quality cut. Pedal-operated reel lift helps the operator cross-cut fairways effectively. A tight turning radius and power steering provide extra manoeuvrability and comfort.

ICI DONATION TO AQUATIC WEEDS RESEARCH UNIT

HRH The Duke of Gloucester has received a cheque on behalf of the Aquatic Weeds Research Unit for (1318) from ICI Professional Products.

The cheque, presented by Patrick Goldsworthy was a donation based on the sales of the ICI publication 'Aquatic Plants - A Guide to Recognition' by David Spencer-Jones and Max Wade.

The book is still available at a cost of £7.50 inc p&p from Borcombe Printers Ltd., Publications Department, Unit 6, Budds Lane, Romsey, Hampshire, SO51 OHA.