

NOTEBOOK...

TIP-TOP CONDITION COURTESY OF BROUWER

TO keep any golf course in tip-top condition can be very time-consuming and it is therefore extremely important to have the correct tool for the job.

Turfland Professional Equipment of Warrington, Cheshire are UK distributors for an excellent range of turf-care machinery, including mowers, verti-cuts, sod cutters and vacs, all manufactured by Brouwer.

Brouwer mowers are available in five and seven gang configurations, with manual or hydraulic lift. The raising and lowering of cutting reels is a simple operation with finger tip controls. Season after season, in rain or shine, they deliver a fine precision cut.

The positive mechanical drive, which is more efficient than other drive systems, makes it possible for smaller, lighter tractors to be used, resulting in lower fuel consumption and reduced compaction.

The mower frame is fabricated from lightweight high-strength structural steel for extra durability and longer life. Front rollers and skid shoes help eliminate scalping and the roller bearings are pre-loaded to produce a self-cleaning action. The unique design allows mowing across slopes without sideslip, and transportation from one location to another is easy.

TRANSPORTABLE

For small mowing areas Turfland can supply the Brouwer Super-3 Mower, an extremely transportable unit which can be pulled by Land Rovers, ATV's or any suitable small tractor. Should existing turf need lifting for any reason, for repair, renovation or to lay drainage pipes below ground for instance, then Turfland have the answer yet again in the Brouwer Sod



The Brouwer Vac

Cutter Mark 2. Optional blade attachments make easy work of stripping and shredding in poor or damaged areas before installing new turf, or for fast easy edging. Light, compact and easy to handle, the Brouwer Sod Cutter features adjustable handles to suit any operator, and has kickstand and folding handles for ready transportation and compact storage. Thatch problems are easily solved with the Brouwer Verti-Cut, a five-gang hydraulic lift vertical

mower. Set to cut small grooves into the soil to aerate the turf, it ensures a more efficient and economical use of fertiliser, chemicals, water and seed. For cleaning up, perhaps after a major tournament, Turfland can supply the Brouwer Vac, which has the largest capacity of any vac of its type on the market today. Grass clippings, leaves, twigs, pine needles and thatch present no problem to the Vac, and rubbish and litter vanish in a trice.

OBITUARY

ARTHUR HINDMARCH, one of the longest serving members of the Scottish Golf Greenkeeper's Association, passed away recently, having reached the grand age of 90.

Arthur joined Airdrie Golf Club, Lanarkshire, after serving in the First World War, and stayed with the club until he retired at the age of 74. Not only was he head greenkeeper, but ran the shop selling golf requisites, and for 14 years his wife Nan and himself were Club Master and Mistress - literally three jobs in one.

Arthur must have been one of the few surviving greenkeepers to have cut fairways with a horse, and even in his sixties he would

cut his six greens with a 16" push Certes. Unlike today's modern greenkeepers he and his counterparts did not suffer from breakdowns; all they had were push mowers, scythe, huck (sickle to our English readers), pick and shovel, barrow and sowing sheet.

On retiring, Arthur became an honorary member of the club and until recently he could be found playing 18 holes as often as three times a week, scorning the old men's practice of playing the six holes near the clubhouse twice, as he considered it bad for the course.

Arthur will be sadly missed by his family and all who had the privilege of knowing him.

NOTEBOOK...

NEW HORIZONS IN TURFCARE

FOUR famous names in turfcare have combined to hold "New Horizons in Turfcare", a concentrated, three and a half hour seminar.

Geoff Taylor, technical officer at Johnsons, fine turf cultivars, will speak on the selection of grass seed cultivars to match landscape and leisure requirements, area preparation, sowing and maintenance.

Keith McKee, turfcare adviser at Fisons Horticulture, will be speaking about the use and abuse of fertilisers and pesticides on fine and outfield turf.

Gordon Bennington, UK operations manager at Camerons, will provide information on the selection, design, installation, operation and benefits of the company's range of irrigation

systems. Richard Bishop, UK sales manager at Ransomes, Europe's leading manufacturer of grass cutting machinery, will give details of the latest advances in turf maintenance products.

The seminar will be held at various venues throughout the country in November. For full details write to Johnsons Seeds, London Road, Boston, PE21 6BR.

THE SUN ALWAYS SHINES ON PARKERS

THE weather, as always, was a great help and again featured as a highlight of the day at the annual Parker Golf Secretaries Tournament at which 80 golf clubs were represented and a splendid 18 holes of golf was enjoyed by the competitors. The competition was won by Liam O'Grady of Gillingham Golf Club with 41 points.

MASSEY-FERGUSON'S 'TURF TIME 88'

A TWO hour tour of working demonstrations of some 40 machines from a dozen manufacturers was one of the highlights of Massey-Ferguson's 'Turf Time 88'. Held over three days at the company's head quarters at Stoneleigh, near Coventry, the event gave representatives of local authorities and other turf equipment users an opportunity to study the performance of Massey-Ferguson's comprehensive range of ground care and maintenance tractors in many aspects of landscape operations. M-F, which is Britain's largest manufacturer of tractors, was joined in the demonstrations by Ransomes, Huxley, Beaver, Agar, Undergear, Gannon, Wessex, Bomford, Lewis, Sisis, Charterhouse, Modus T and Terra-vac.

WESSEX

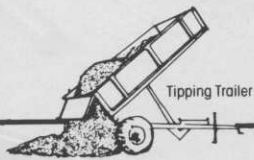
**Compact
Tractor
Attachments
Reliable
Add-On
Versatility...**



GM 122
Rotary Mower



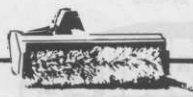
Sweeper Collector



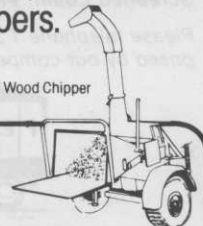
Tipping Trailer



TPU1084 Flail Mower



Front Brush



LGU Wood Chipper

Wessex have designed a range of machinery enabling you to maximise returns on your investment in compact tractors by keeping them at work all through the day, all year round. Rotary and flail mowers, pick-up mowers, leaf sweepers, trailers, spreaders, front blades and brushes, cultivation machinery, even wood chippers.

Send now for full details of the Wessex range.

Name Job Title.....

Company/Authority.....

Address.....

Phone.....

WESSEX FARM MACHINERY SALES CO.

Trading Estate, Oakhanger Road,
Bordon, Hampshire, GU35 9HH
Telephone (04203) 8111

WESSEX

NOTEBOOK...

FIRST HUXLEY GREENS MOWER FOR HAMPSHIRE

HUXLEYS Grass Machinery have supplied the first of their all-new golf greens mowers in Hampshire to the long-established Barton-on-Sea Golf Club.

Totally designed, developed and built at the company's sales, service and manufacturing centre at The Dean, New Alresford, the Huxley 358 greens mower (three cutting units; 58in mowing width) is the latest British entrant to the highly sophisticated golf course maintenance market. Incorporating a number of features as a direct result of comments and suggestions made by golf greenkeepers during initial prototype testing, the Huxley 358 mower features a diesel engine, automatic transmission and full power steering, all ensuring superb economy and ease of operation for the user.

Fuel economy was one specific feature with attracted Barton-on-Sea's head greenkeeper, Bob Parsons, to the Huxley mower. Compared with the club's previous petrol powered machine, the Huxley 358 has been found to consume less than half the quantity of fuel to give an overall cost saving, when the difference in price between petrol and diesel is taken into account, of more than 80 per cent.

In addition, the club's 18 greens are taking about an hour less to mow, thanks to the machine's excellent manoeuvrability and speed of movement around the course.

Founded in 1898, Barton-on-Sea Golf Club is laid out on 85 acres of well-drained land midway between Christchurch and Lymington. The club's 700



Bob Parsons Barton-on-Sea's head greenkeeper on the 358

members enjoy superb views of the adjacent coastline and the Isle of Wight from all parts of the par 67 course.

THE SS100 . . . FIRST ON THE GREEN

IT GRADES . . . IT SHREDS . . . IT BLENDS . . .

Now, from GRADEALL comes a new concept in greenkeeping. A unique combination of blending, shredding and grading in a single unit that gives you:

*MAXIMUM MOBILITY

*HIGH PERFORMANCE
RELIABILITY

*MAXIMUM TONNAGE OF
QUALITY TOP DRESSING

*MINIMUM EFFORT

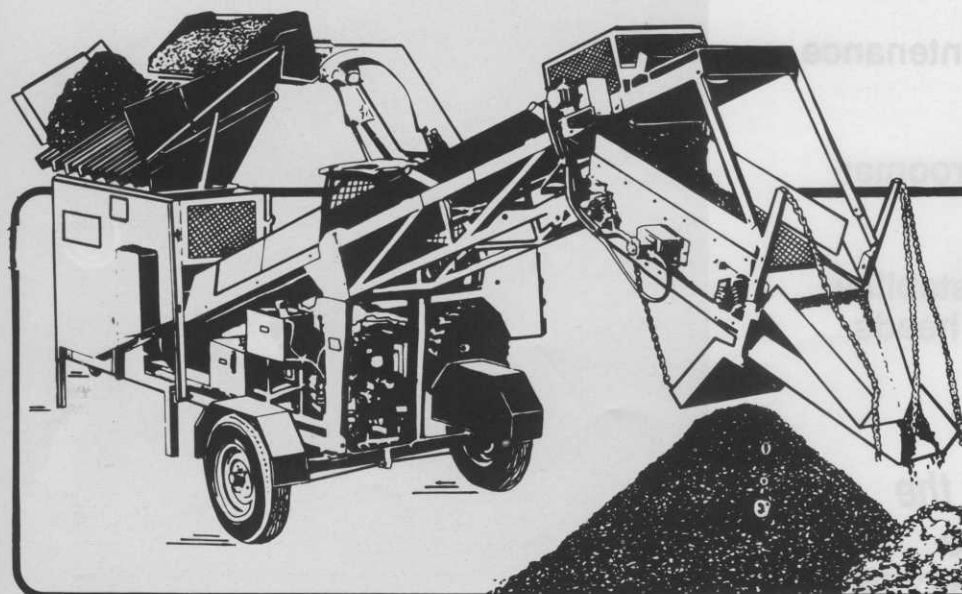
The SS100 performs aggressively on even the poorest quality damp

soil with stones, shrubs and sods producing high quality loose and manageable soil. In fact, the SS100 turns tough, lumpy organic humus into pure, workable compost.

From cricket tables, to bowling greens, to golf greens and fairways . . . indeed any turf area . . . you'll benefit from the SS100's unique capabilities. For Hire. For Sale. For Service.

CALL US ...

if you want to make the GRADE!



GRADEALL
INTERNATIONAL

G.B. Office
GradeAll International Ltd.,
3 Yew Tree Mews, Bailey Lane,
Ringway, Manchester. Tel. (061) 4990446

N.I. Office
GradeAll International Ltd.,
9 Furlough Road, Dungannon,
Co. Tyrone, Northern Ireland.
Tel. (08687) 40484.
Telex: 265871 MONREF G
Quoting 72: MAG 32854

NOTEBOOK...

RYDER CUP HOSPITALITY

THE 1989 Johnnie Walker Ryder Cup could well have the largest hospitality village ever seen at a golf event.

In response to the vast number of enquiries for hospitality facilities at the match (September 22 - 24 1989), the PGA has acquired fields around The Belfry to supplement the on-course facilities.

The Ryder Cup Committee has also announced that Keith Prowse Hospitality has been appointed the official hospitality agency for the 1989 Ryder Cup match.

John Lindsey, Executive Director of the PGA said: "We are delighted to continue the association with the Keith Prowse group which has been so beneficial in the past. The only way to obtain hospitality approved by the PGA for the 1989

Johnnie Walker Ryder Cup will be through Keith Prowse or by direct contact with the PGA.

"It has come to our attention that there is a company trading as Ryder Cup Hospitality Limited. This organisation has no links with the PGA and has not sought or received approval or endorsement from us."

Full details of all hospitality packages are available from Keith Prowse. For further information please contact: John Lindsey, 0675 70333 or Keith Brain, 0606 74033.

NEW ADDITION FOR TURFMASTER

LATEST addition to the Turfmaster range of triple cylinder specialist grass mowers is a new fully hydraulic self-propelled model which will be available for delivery in the UK next spring.

Built at the company's factory at Gainsborough, Lincolnshire, the hydrostatically-driven three-wheeled T370 is the result of a £1/4 million research and development programme updating Turfmaster's well established belt driven T360.

After three years of development and substantial investment the company is now in a position to take orders for the new model and deliveries will start in April. Painted in Turfmaster's familiar white and orange colours, the T370 has a cutting width of 70in, incorporates the manoeuvrability associated with triple mowers and gives mown grass the outstanding, well groomed appearance that is the hallmark of cylinder machines.

Powered by a Perkins engine, the T370 has a 30-litre tank holding sufficient diesel to complete a minimum of at least one day's operation without refuelling. Retail price of the Turfmaster T370 is from £7,500.



FOUR-SEASON VERSATILITY

John Deere's long line of grounds care equipment brings you the quality and choice you'd expect from the world's largest manufacturer.

Mowers for every grass care job; plus the quality-build, the power and the attachments to handle big grounds care tasks throughout the year.

Please write your name and address below and send off to learn more about John Deere four-season versatility.

RELIABILITY IS OUR STRENGTH



BY APPOINTMENT TO HER MAJESTY THE QUEEN SUPPLIERS OF AGRICULTURAL EQUIPMENT. JOHN DEERE LIMITED, NOTTINGHAM.



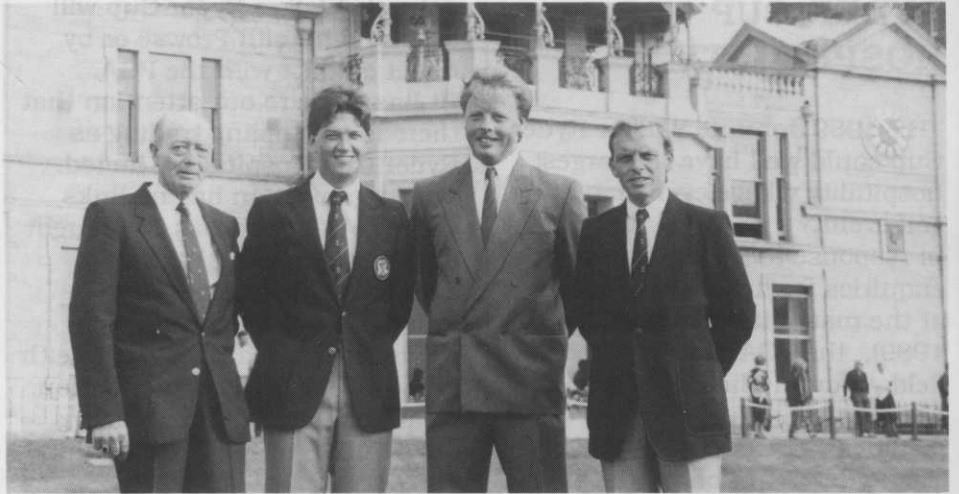
JOHN DEERE Ltd., Harby Road,
Langar, Nottingham NG13 9HT
Tel. (0949) 60491

ALGH 1922 E

NOTEBOOK...

NEW MEN AT ST ANDREWS

ST. ANDREWS Links Management Committee has appointed head greenkeepers to each of the four 18-hole courses on St. Andrews Links. David Dewar is now in total charge of the Old Course, Mark Brunton, David Wilson and Allan Purdie are appointed head greenkeepers at the New, Jubilee and Eden courses respectively and each has full authority and responsibility for all greenkeeping matters relating to their courses. After advertising extensively, and interviewing many applicants, only one of the new appointments was not made from existing personnel - Allan Purdie having previously been head greenkeeper at the Boomieknowe Golf Club located outside Edinburgh. The committee decided to implement these changes to allow creation of a greenkeeping management structure more in keeping with present-day control requirements, and to allow development of staff with full experience of exercising authority and responsibility over every facet of greenkeeping maintenance to championship standards. Plans to improve existing courses, construct new



David Dewar with Mark Brunton, David Wilson and Allan Purdie

courses and add extensive practice facilities effectively made the previous structure obsolete. The new head greenkeepers report to Links Supervisor,

W. Woods, whose future role will increasingly be one of forward planning and co-ordinating rather than day to day involvement in greenkeeping.

EXCLUSIVE RIGHTS FOR ROLAWN

BRITISH Seed Houses Ltd have announced the signing of a contract to give Rolawn the exclusive rights to produce turf from two new fescue and bent cultivars which will produce turf completely free of all weed grasses. The varieties Countess Chewings Fescue and Duchess Agrostis Tenuis, bred by Queens University Belfast from a research programme sponsored by British Seed Houses, have a chemical resistance which will

enable Rolawn to spray the turf produced from these varieties to remove all other grass and weed species. In making the announcement Neville Bark of BSH said "Rolawn were selected to bring this major development to the turf market because of their proven ability to produce high quality turf. Also, their regional production and distribution centres will make this new unique high quality turf rapidly available to the end user."

Hole Cups



Superior Design made from engineering grade plastic. More rigid than nylon for a truer putting hole.

£2.99 each
available in cartons of 10.

The Best

Tee Markers



High visibility, 6" dia. 3" high. Half Golf Ball design, cast in heavy aluminium, ribbed for added strength. Designed for maximum abuse.

£8.95 each

Traffic Control Stakes



Aluminium shaft 5/8" dia., 2' 6" high, black or white top complete with hook. A multi-purpose stake when used with chain or rope make instant fencing. As no ground sockets are required they are easily removed and replaced to other areas of G.U.R. etc.

£2.99 each

available in packs of 10
10% discount on 5 packs or more

Information & Etiquette Signs



Ground Under Repair
Please Replace Divots
Please Repair Pitchmarks
Please Keep Off the Grass



Next Tee (l. or r.)
Trolleys this Way (l. or r.)
150 yds. to centre of Green
New Tree Plantation.



Drop out into Semi-rough.
New Green under construction.
Drop out to nearest relief.
No Penalty.

Exclusive design in heavy duty cast aluminium, so strong they can be driven over by a tractor without breaking.

£8.95 each

Swivel Flagpoles



Municipal
8' x 1/2" White fibreglass

£3.50 each*



Links
6' x 1/2" Yellow fibreglass

£6.99 each*



Slimflex
7'3" x 1/2" Yellow fibreglass

£7.99 each*

All poles complete with bung and Tacit's unique swivel action at no extra cost. Will accept any type of tie-on flag. Quality nylon flags £1.25 each. P & P carriage at cost.

*Available in packs of 10.

Available ONLY from TACIT.

TACIT

Unit 3, 3 Millers Lane, Monks Kirby,
Rugby CV23 0RJ. Tel: (0788) 832166

For Less